

STATE OF NORTH CAROLINA  
DIVISION OF HIGHWAYS

STATE PROJECT REFERENCE NO.	SHEET NO.
B-3881	TCP-1

**PLAN FOR PROPOSED  
TRAFFIC CONTROL, MARKING & DELINEATION  
NEW HANOVER COUNTY**

B-3881

**ROADWAY STANDARD DRAWINGS**

THE FOLLOWING ROADWAY STANDARDS AS APPEAR IN "ROADWAY STANDARD DRAWINGS"-ROADWAY DESIGN UNIT-N.C. DEPARTMENT OF TRANSPORTATION-RALEIGH, N.C., DATED JULY 2006 ARE APPLICABLE TO THIS PROJECT AND BY REFERENCE HEREBY ARE CONSIDERED A PART OF THESE PLANS:

STD. NO.	TITLE
1101.02	TEMPORARY LANE CLOSURES
1101.04	TEMPORARY SHOULDER CLOSURES
1101.05	WORK ZONE VEHICLE ACCESS
1101.11	TRAFFIC CONTROL DESIGN TABLES
1110.01	STATIONARY WORK ZONE SIGNS
1110.02	PORTABLE WORK ZONE SIGNS
1130.01	DRUM
1135.01	CONES
1145.01	BARRICADES
1150.01	FLAGGING DEVICES
1205.01	PAVEMENT MARKINGS - LINE TYPES & OFFSETS
1205.02	PAVEMENT MARKINGS - 2 LANE & MULTILANE ROADWAYS
1205.04	PAVEMENT MARKINGS - INTERSECTIONS
1205.12	PAVEMENT MARKINGS - BRIDGES
1250.01	PAVEMENT MARKER SPACING
1251.01	RAISED PAVEMENT MARKERS
1261.01	GUARDRAIL & BARRIER DELINEATOR SPACING
1261.02	GUARDRAIL & BARRIER DELINEATOR TYPES
1262.01	GUARDRAIL END DELINEATION

**INDEX OF SHEETS**

SHEET NO.	TITLE
TCP-1	LIST OF APPLICABLE ROADWAY STANDARD DRAWINGS, LEGEND, INDEX OF SHEETS, AND FINAL PAVEMENT MARKING SCHEDULE
TCP-2	PROJECT NOTES
TCP-3	PHASING AND TEMPORARY PAVEMENT MARKING SCHEDULE
TCP-4	DETAIL 1
TCP-5	DETAIL 2
TCP-6	DETAIL DRAWING FOR TWO-WAY UNDIVIDED WORK ZONE WARNING SIGNS

**LEGEND**

- GENERAL**
- DIRECTION OF TRAFFIC FLOW
  - NORTH ARROW
  - PROPOSED PVMT. EXIST. PVMT.
  - WORK AREA
  - REMOVAL OF EXISTING PAVEMENT
- TRAFFIC CONTROL DEVICES**
- TYPE I BARRICADE
  - TYPE II BARRICADE
  - TYPE III BARRICADE
  - CONE
  - DRUM SKINNY-DRUM
  - FLASHING ARROW PANEL (TYPE C)
  - TYPE 'B' WARNING LIGHT
  - STATIONARY SIGN
  - PORTABLE SIGN
  - STATIONARY OR PORTABLE SIGN
  - WARNING FLAGS
  - CRASH CUSHION
  - CHANGEABLE MESSAGE SIGN
  - TRUCK MOUNTED IMPACT ATTENUATOR (TMIA)
  - POLICE
  - FLAGGER

**FINAL PAVEMENT MARKING SCHEDULE**

SYMBOL	DESCRIPTION	PAY ITEM QUANTITY BREAKDOWN		TOTAL QUANTITY
FINAL PAVEMENT MARKINGS				
P4	WHITE STOPBAR (2X)	PAINT(24")		80 LF
		80	LF	
		TOTAL		
PA	WHITE EDGELINE (2X)	PAINT(4")		8280 LF
		8280	LF	
		TOTAL		
PI	YELLOW DOUBLE CENTER (2X)	PAINT(4")		8280 LF
		8280	LF	
		TOTAL		
MARKERS PERMANENT RAISED PAVEMENT MARKERS				
MD	YELLOW	MARKERS		25 EA
		25	EA	
		TOTAL		

NOTE: FOR EACH PAINT PAVEMENT MARKING ITEM, 1X IMPLIES A SINGLE APPLICATION, 2X IMPLIES TWO APPLICATIONS, AND 3X IMPLIES THREE APPLICATIONS.

- PAVEMENT MARKINGS**
- CRYSTAL/CRYSTAL PAVEMENT MARKER
  - YELLOW/YELLOW PAVEMENT MARKER
  - CRYSTAL/RED PAVEMENT MARKER
  - PAVEMENT MARKING SYMBOLS

APPROVED: _____ DATE: _____	PLAN PREPARED BY: N.C.D.O.T. WORK ZONE TRAFFIC CONTROL UNIT
	J. S. BOURNE, PE <b>TRAFFIC CONTROL ENGINEER</b>
	J. ISHAK, PE <b>TRAFFIC CONTROL PROJECT ENGINEER</b>
	J.L. PORTANOVA, PE <b>TRAFFIC CONTROL PROJECT DESIGN ENGINEER</b>
	J.L. FUTRELL <b>TRAFFIC CONTROL DESIGN ENGINEER</b>

02-JUN-2008 12:20 \\dot\dfsroot\0\Nsrproj\Tipp\projects-b\3881\Traffic\TrafficControl\Tep-b-3881\_Tep\_1.dgn  
IFUTR-el AT WZTC224166

TIP PROJECT:

# PROJECT NOTES

CHANGES MAY BE REQUIRED WHEN PHYSICAL DIMENSIONS IN THE DETAIL DRAWINGS, STANDARD DETAILS AND ROADWAY DETAILS ARE NOT ATTAINABLE TO MEET FIELD CONDITIONS, OR RESULT IN DUPLICATE, OR UNDESIRE OVERLAPPING OF DEVICES. MODIFICATION MAY INCLUDE: MOVING, SUPPLEMENTING, COVERING OR REMOVAL OF DEVICES, AS DIRECTED BY THE ENGINEER.

THE FOLLOWING GENERAL NOTES APPLY AT ALL TIMES FOR THE DURATION OF THE CONSTRUCTION PROJECT, EXCEPT WHEN OTHERWISE NOTED IN THE PLAN, OR DIRECTED BY THE ENGINEER.

### TIME RESTRICTIONS

A) DO NOT CLOSE OR NARROW TRAVEL LANES AS FOLLOWS:

FOR CHRISTMAS TREE LIGHTING OCCURRING AT CORNELIUS HARNETT STREET 2 HOURS BEFORE THE START AND 2 HOURS AFTER THE END OF THE CHRISTMAS TREE LIGHTING.

B) DO NOT CONDUCT ANY HAULING OPERATIONS AGAINST THE FLOW OF TRAFFIC OF AN OPEN TRAVELWAY UNLESS THE HAULING OPERATION IS PROTECTED BY BARRIER OR GUARDRAIL OR AS DIRECTED BY THE ENGINEER.

### LANE AND SHOULDER CLOSURE REQUIREMENTS

C) REMOVE LANE CLOSURE DEVICES FROM THE LANE WHEN WORK IS NOT BEING PERFORMED BEHIND THE LANE CLOSURE OR WHEN A LANE CLOSURE IS NO LONGER NEEDED, OR AS DIRECTED BY THE ENGINEER.

D) WHEN PERSONNEL AND/OR EQUIPMENT ARE WORKING WITHIN 15 FT OF AN OPEN TRAVEL LANE, CLOSE THE NEAREST OPEN SHOULDER USING ROADWAY STANDARD DRAWING NO. 1101.04 UNLESS THE WORK AREA IS PROTECTED BY BARRIER OR GUARDRAIL OR A LANE CLOSURE IS INSTALLED.

E) WHEN PERSONNEL AND/OR EQUIPMENT ARE WORKING ON THE SHOULDER ADJACENT TO AN UNDIVIDED FACILITY AND WITHIN 5 FT OF AN OPEN TRAVEL LANE, CLOSE THE NEAREST OPEN TRAVEL LANE USING ROADWAY STANDARD DRAWING NO. 1101.02 UNLESS THE WORK AREA IS PROTECTED BY BARRIER OR GUARDRAIL.

F) WHEN PERSONNEL AND/OR EQUIPMENT ARE WORKING WITHIN A LANE OF TRAVEL OF AN UNDIVIDED OR DIVIDED FACILITY, CLOSE THE LANE ACCORDING TO THE TRAFFIC CONTROL PLANS, ROADWAY STANDARD DRAWINGS OR AS DIRECTED BY THE ENGINEER. CONDUCT THE WORK SO THAT ALL PERSONNEL AND/OR EQUIPMENT REMAIN WITHIN THE CLOSED TRAVEL LANE.

G) DO NOT WORK SIMULTANEOUSLY WITHIN 15 FT ON BOTH SIDES OF AN OPEN TRAVELWAY, RAMP OR LOOP WITHIN THE SAME LOCATION UNLESS PROTECTED WITH GUARDRAIL OR BARRIER.

H) PROVIDE TRAFFIC CONTROL FOR APPROPRIATE LANE CLOSURES FOR SURVEYING DONE BY THE DEPARTMENT.

### PAVEMENT EDGE DROP OFF REQUIREMENTS

I) BACKFILL AT A 6:1 SLOPE UP TO THE EDGE AND ELEVATION OF EXISTING PAVEMENT IN AREAS ADJACENT TO AN OPENED TRAVEL LANE THAT HAS AN EDGE OF PAVEMENT DROP-OFF AS FOLLOWS:

BACKFILL DROP-OFFS THAT EXCEED 2 INCHES ON ROADWAYS WITH POSTED SPEED LIMITS OF 45 MPH OR GREATER.

BACKFILL DROP-OFFS THAT EXCEED 3 INCHES ON ROADWAYS WITH POSTED SPEED LIMITS LESS THAN 45 MPH.

BACKFILL WITH SUITABLE COMPACTED MATERIAL, AS APPROVED BY THE ENGINEER, AT NO EXPENSE TO THE DEPARTMENT.

J) DO NOT EXCEED A DIFFERENCE OF 2 INCHES IN ELEVATION BETWEEN OPEN LANES OF TRAFFIC FOR NOMINAL LIFTS OF 1.5 INCHES. INSTALL ADVANCE WARNING "UNEVEN LANES" SIGNS (W8-11) (200 FT) IN ADVANCE AND A MINIMUM OF ONCE EVERY HALF MILE THROUGHOUT THE UNEVEN AREA.

### TRAFFIC PATTERN ALTERATIONS

K) NOTIFY THE ENGINEER TWENTY ONE (21) CALENDAR DAYS PRIOR TO ANY TRAFFIC PATTERN ALTERATION.

### SIGNING

L) INSTALL ADVANCE WORK ZONE WARNING SIGNS WHEN WORK IS WITHIN 40 FT FROM THE EDGE OF TRAVEL LANE AND NO MORE THAN THREE (3) DAYS PRIOR TO THE BEGINNING OF CONSTRUCTION.

M) ENSURE ALL NECESSARY SIGNING IS IN PLACE PRIOR TO ALTERING ANY TRAFFIC PATTERN.

N) INSTALL BLACK ON ORANGE "DIP" SIGNS (W8-2) AND/OR "BUMP" SIGNS (W8-1) 100 FT IN ADVANCE OF THE UNEVEN AREA, OR AS DIRECTED BY THE ENGINEER.

### TRAFFIC CONTROL DEVICES

O) SPACE CHANNELIZING DEVICES IN WORK AREAS NO GREATER THAN TWICE THE POSTED SPEED LIMIT (MPH), EXCEPT 10 FT ON-CENTER IN RADII, AND 3 FT OFF THE EDGE OF AN OPEN TRAVELWAY, WHEN LANE CLOSURES ARE NOT IN EFFECT. WHEN SKINNY DRUMS ARE ALLOWED, REFER TO SECTION 1180 OF STANDARD SPECIFICATIONS FOR ROADS AND STRUCTURES OR AS SHOWN IN THE PLANS.

P) PLACE TYPE III BARRICADES, WITH "ROAD CLOSED" SIGN R11-2 ATTACHED, OF SUFFICIENT LENGTH TO CLOSE ENTIRE ROADWAY.

Q) PLACE ADDITIONAL SETS OF THREE CHANNELIZING DEVICES (DRUMS, CONES OR SKINNY DRUMS) PERPENDICULAR TO THE EDGE OF TRAVELWAY ON (500 FT) CENTERS WHEN UNOPENED LANES ARE CLOSED TO TRAFFIC.

### PAVEMENT MARKINGS AND MARKERS

R) INSTALL PAVEMENT MARKINGS AND PAVEMENT MARKERS ON THE FINAL SURFACE AS FOLLOWS:

ROAD NAME	MARKING	MARKER
1) CORNELIUS HARNETT ST.	PAINT	PERMANENT RAISED
2) 6 TH STREET	PAINT	N/A

S) INSTALL TEMPORARY PAVEMENT MARKINGS AND TEMPORARY PAVEMENT MARKERS ON INTERIM LAYERS OF PAVEMENT AS FOLLOWS:

ROAD NAME	MARKING	MARKER
1) CORNELIUS HARNETT ST.	PAINT	TEMPORARY RAISED
2) 6 TH STREET	PAINT	N/A

T) PLACE TWO APPLICATIONS OF PAINT PAVEMENT MARKINGS ON THE FINAL WEARING SURFACE. PLACE THE SECOND APPLICATION OF PAINT UPON SUFFICIENT DRYING TIME OF THE FIRST.

U) PLACE ONE APPLICATION OF PAINT FOR TEMPORARY TRAFFIC PATTERNS. PLACE A SECOND APPLICATION OF PAINT SIX (6) MONTHS AFTER THE INITIAL APPLICATION AND EVERY SIX MONTHS AS DIRECTED BY THE ENGINEER.

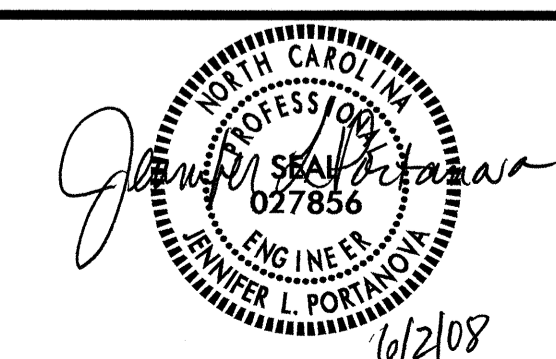

V) TIE PROPOSED PAVEMENT MARKING LINES TO EXISTING PAVEMENT MARKING LINES.

W) REMOVE/REPLACE ANY CONFLICTING/DAMAGED PAVEMENT MARKINGS AND MARKERS BY THE END OF EACH DAY'S OPERATION.

### MISCELLANEOUS

X) COORDINATE WITH "CSX TRANSPORTATION" PRIOR TO REMOVING/INSTALLING BRIDGE GIRDERS ON EXISTING/PROPOSED STRUCTURE.

02-JUN-2008 12:21  
\\dot\dfs\cor10\psproj\trafficcontrol\top\B-3881\top\_2.dgn  
JLJ AT WZTC224166

APPROVED: _____ DATE: _____	<b>PROJECT NOTES</b>		
	SCALE: NONE		
	DATE: 05/08		REVISIONS
	DWG. BY: JLF		
	DESIGN BY: JLF		
REVIEWED BY: JLP			

## PHASING

NOTES: RETURN TRAFFIC TO THE EXISTING TWO-LANE TWO-WAY TRAFFIC PATTERN AT THE END OF EACH WORK DAY ON ALL ROADS UNLESS OTHERWISE NOTED IN THE PHASING OR DIRECTED BY THE ENGINEER.

- STEP 1: - USING RSD 1101.02, SHEET 1 OF 9 AND TCP-6, INSTALL ADVANCED WORK ZONE SIGNS ON ALL ROADS.
- STEP 2: - USING RSD 1101.02, SHEET 1 OF 9, AS NEEDED, PERFORM THE FOLLOWING. SEE TCP-4 AND ROADWAY PLANS:

- CONSTRUCT PROPOSED STRUCTURE AND PROPOSED -L- (CORNELIUS HARNETT ST.) UP TO BUT NOT INCLUDING THE FINAL LAYER OF SURFACE COURSE FROM -L- STA. 22+10 +/- TO -L- STA. 36+23+/-.

- CONSTRUCT PROPOSED -Y1- (6 TH STREET) UP TO BUT NOT INCLUDING THE FINAL LAYER OF SURFACE COURSE FROM -Y1- STA. 12+50 +/- TO -Y1- STA. 12+82 +/-.

COMPLETE THE WORK REQUIRED IN STEP 3 IN ONE WEEKEND FROM 6:00 P.M. FRIDAY TO 7:00 A.M. THE FOLLOWING MONDAY. SEE ICT FOR LIQUIDATED DAMAGES.

- STEP 3: - USING RSD 1101.02, SHEET 1 OF 9, PERFORM THE FOLLOWING IN A CONTINUOUS MANNER: SEE TCP-5 AND ROADWAY PLANS.

AT THE END OF THE WEEKEND, SHIFT TRAFFIC TO THE TWO LANE, TWO WAY FINAL TRAFFIC PATTERN ON THE PROPOSED ALIGNMENT.

- 1) PLACE TRAFFIC IN THE EXISTING WESTBOUND LANE IN A ONE-LANE, TWO-WAY TRAFFIC PATTERN AND CONSTRUCT THE PROPOSED EASTBOUND TIE IN WORK UP TO BUT NOT INCLUDING THE FINAL SURFACE COURSE FROM:

-L- STA. 20+00 +/- TO -L- STA. 22+10 +/- AND  
 -L- STA. 36+23 +/- TO -L- STA. 38+00 +/- AND  
 -Y1- STA. 12+40 +/- TO -Y1- STA. 12+50 +/-.

- PLACE TEMPORARY PAVEMENT MARKING (PAINT) ON PROPOSED EASTBOUND LANE FROM:

-L- STA. 20+00 +/- TO -L- STA. 38+00 +/-.

- 2) SHIFT TRAFFIC TO PROPOSED EASTBOUND LANE IN A ONE-LANE, TWO-WAY TRAFFIC PATTERN TO CONSTRUCT THE PROPOSED WESTBOUND TIE IN WORK UP TO BUT NOT INCLUDING THE FINAL SURFACE COURSE FROM:

-L- STA. 20+00 +/- TO -L- STA. 22+10 +/- AND  
 -L- STA. 36+23 +/- TO -L- STA. 38+00 +/-, AND  
 -Y1- STA. 11+82 +/- TO -Y1- STA. 12+50 +/-.

- PLACE TEMPORARY PAVEMENT MARKING (PAINT) ON PROPOSED WESTBOUND LANE FROM:

-L- STA. 20+00 +/- TO -L- STA. 38+00 +/- AND  
 -Y1- STA. 11+82 +/- TO -Y1- STA. 12+50 +/- (BOTH LANES).

- RELOCATE EXISTING STOP SIGN AT THE INTERSECTION OF -L- (CORNELIUS HARNETT ST.) AND -Y1- (6 TH STREET).

- OPEN PROPOSED -L- AND -Y- TO THE TWO-LANE, TWO-WAY FINAL TRAFFIC PATTERN.

- STEP 4: AWAY FROM TRAFFIC, REMOVE EXISTING STRUCTURE AND APPROACHES. SEE TCP-5 AND ROADWAY PLANS.

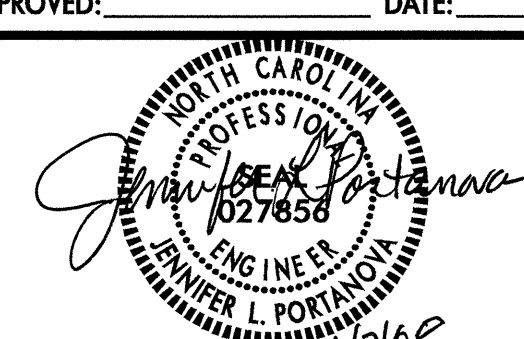
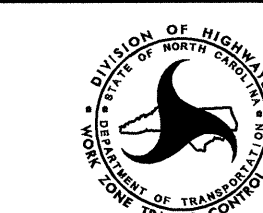
- STEP 5: USING RSD 1101.02, SHEET 1 OF 9 AND TCP-5, PLACE FINAL LAYER OF SURFACE COURSE ON ALL ROADS. PLACE FINAL PAVEMENT MARKING (PAINT) AND MARKERS (PERMANENT RAISED) ON -L- (CORNELIUS HARNETT ST.) AND PLACE FINAL PAVEMENT MARKINGS (PAINT) ON -Y1- (6 TH STREET).

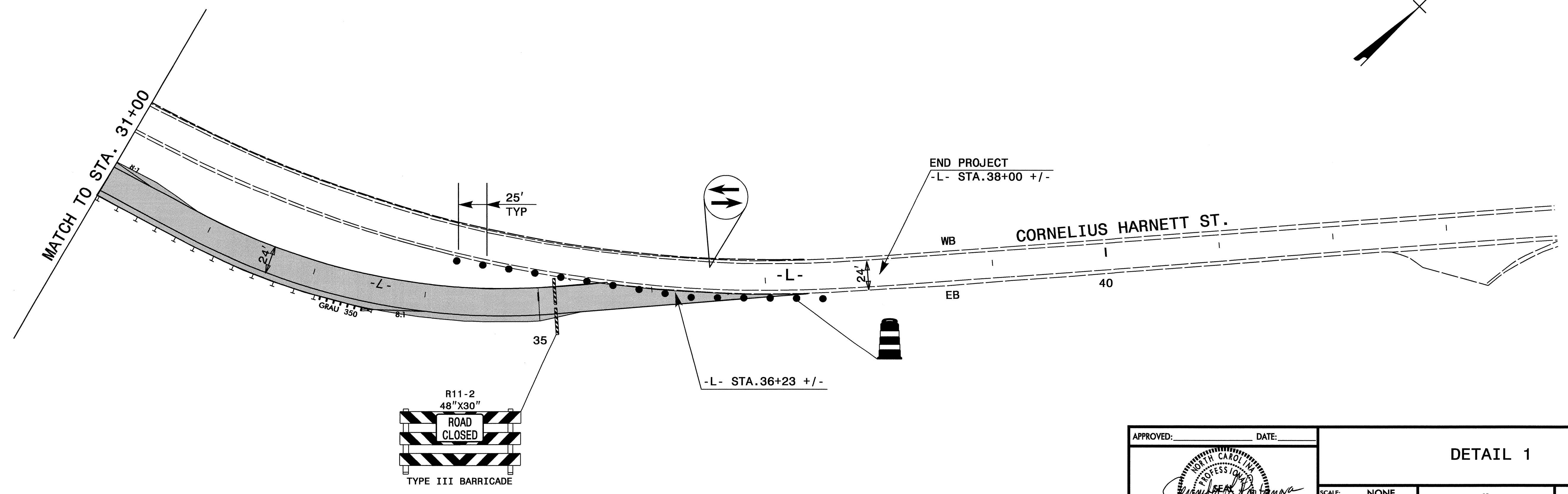
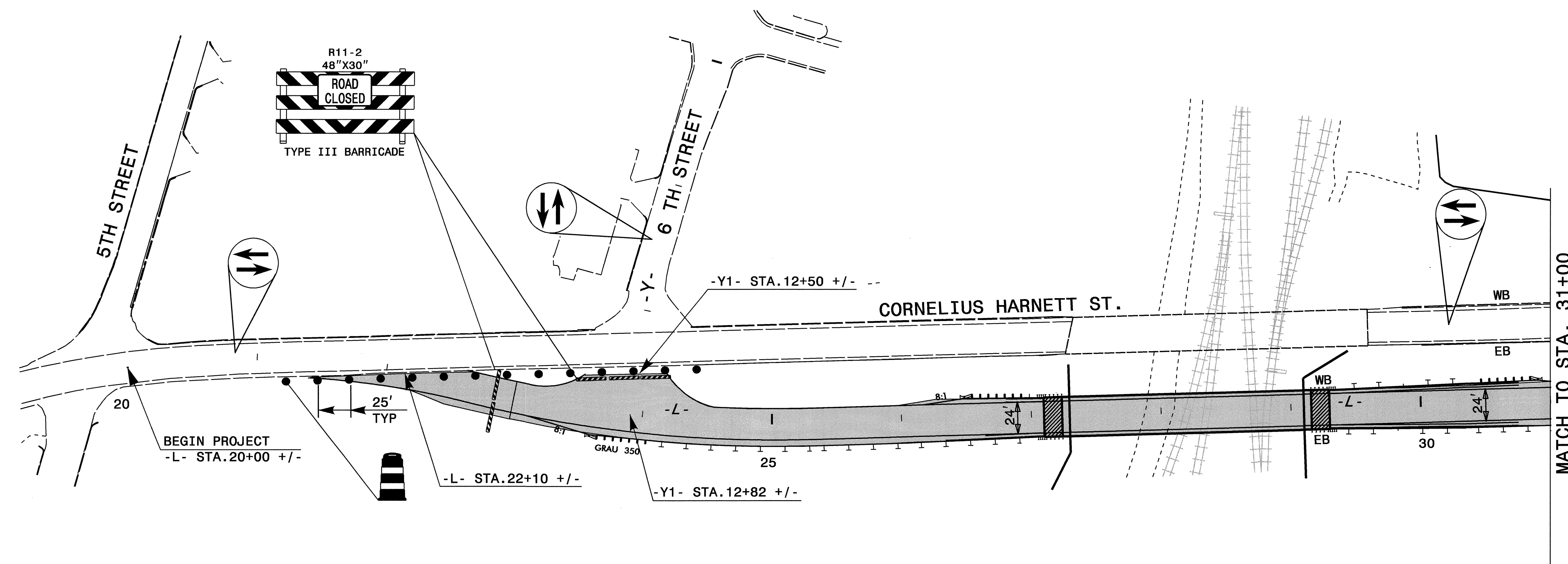
- STEP 6: REMOVE ALL WORK ZONE TRAFFIC CONTROL DEVICES.

## TEMPORARY PAVEMENT MARKING SCHEDULE

SYMBOL	DESCRIPTION	PAVEMENT MARKING	PAY ITEM QUANTITY BREAKDOWN		TOTAL QUANTITY
P4	WHITE STOPBAR (2X)	PAINT(24")	80	LF	80 LF
			TOTAL		
PA	WHITE EDGELINE (2X)	PAINT(4")	8280	LF	16560 LF
			TOTAL		
PI	YELLOW DOUBLE CENTER (2X)		8280	LF	16560 LF
			TOTAL		
MARKERS TEMPORARY RAISED PAVEMENT MARKERS					
MK	YELLOW		25	EA	25 EA
			TOTAL		
NOTE: FOR EACH PAINT PAVEMENT MARKING ITEM, 1X IMPLIES A SINGLE APPLICATION, 2X IMPLIES TWO APPLICATIONS AND 3X IMPLIES THREE APPLICATIONS.					

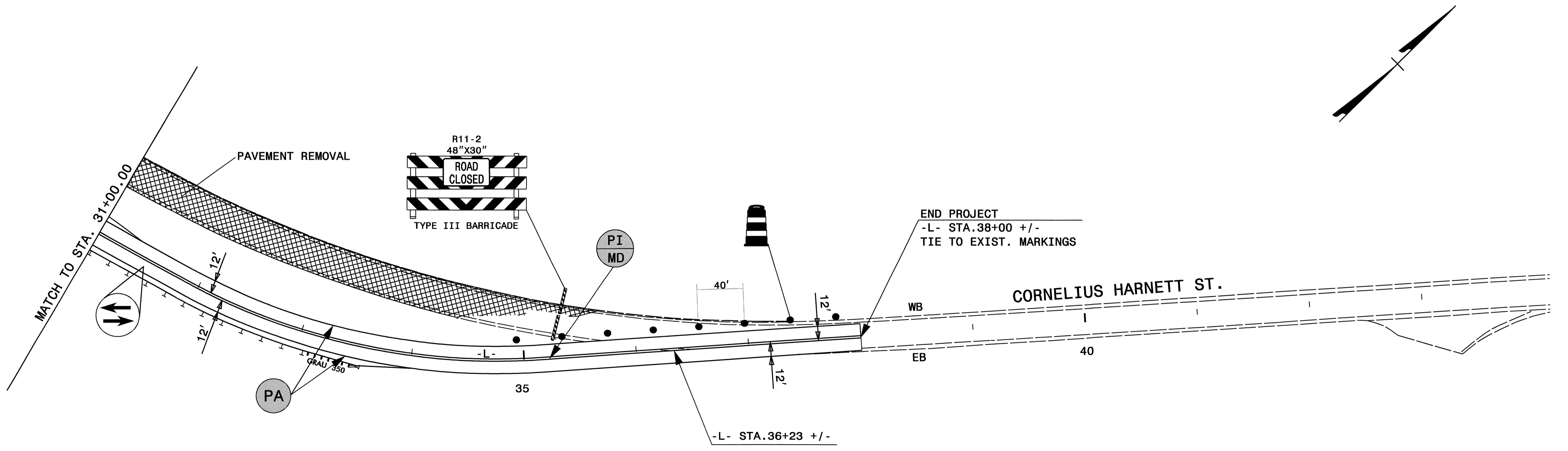
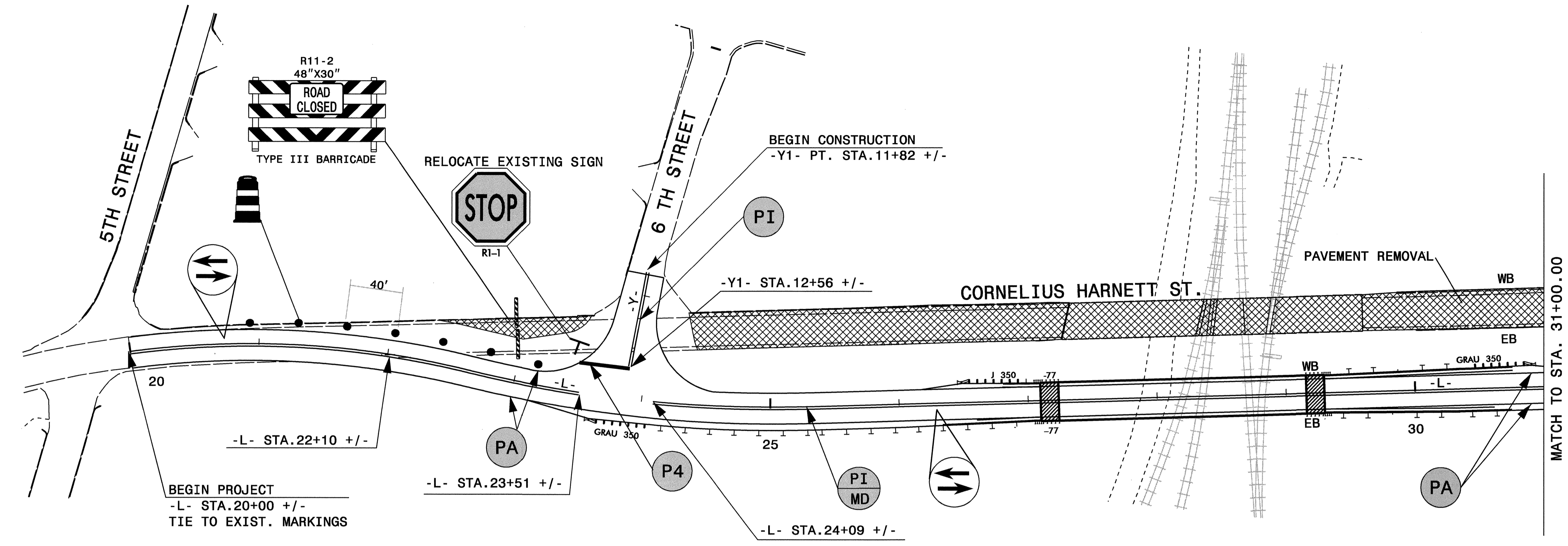
02-JUN-2008 12:23  
 \\dot\dfs\00210\ansproj\1\ipproj\02\tr\office\tr\officecontrol\top\b-3881\_top\_3.dgn  
 JFL\tr\cell AT WZTC22466

APPROVED: _____	DATE: _____	<b>PHASING AND TEMPORARY PAVEMENT MARKING SCHEDULE</b>	
	SCALE: NONE		REVISIONS
	DATE: 05/08		
	DWG. BY: JLF		
	DESIGN BY: JLF		
REVIEWED BY: JLP			



02-JUN-2008 12:35  
 \\dot\dfs\opt10\nsproj\trf\projects-b\3881\trf\trafficcontrol\tcp\3881\_top\_4.dgn  
 JLF\trf\at\WZTC224166

APPROVED: _____ DATE: _____	<b>DETAIL 1</b>	
SCALE: NONE		REVISIONS
DATE: 05/08		
DESIGN BY: JLF		
REVIEWED BY: JLP		



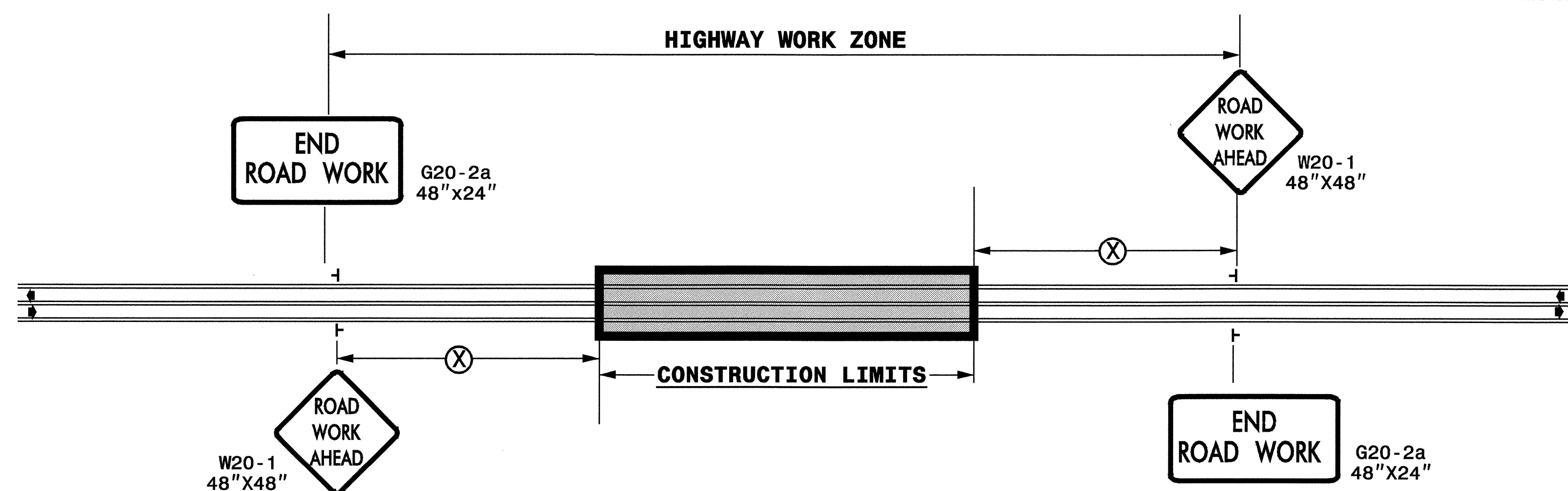
02-JUN-2008 12:24  
 C:\Users\jlf\Documents\Projects\B-3881\Traffic\Traffic\Traffic\top\b-3881\_top.5.dgn  
 1411181 AT 1210224166

APPROVED: \_\_\_\_\_ DATE: \_\_\_\_\_

6/2/08

<b>DETAIL 2</b>									
SCALE: NONE									
DATE: 05/08									
DWG. BY: JLF									
REVIEWED BY: JLP									
<table border="1"> <thead> <tr> <th colspan="2">REVISIONS</th> </tr> </thead> <tbody> <tr> <td> </td> <td> </td> </tr> <tr> <td> </td> <td> </td> </tr> <tr> <td> </td> <td> </td> </tr> </tbody> </table>		REVISIONS							
REVISIONS									

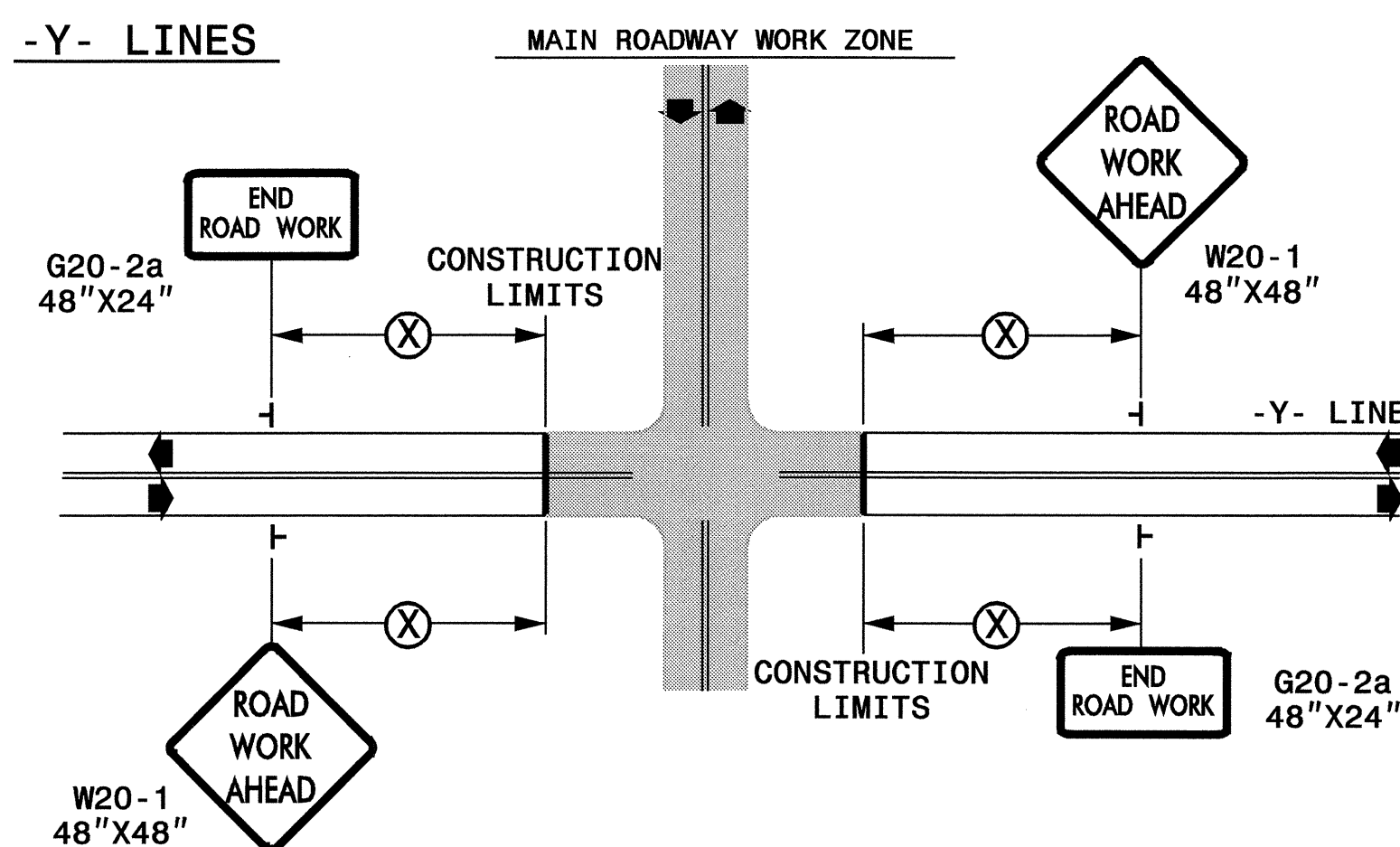
**TWO-WAY UNDIVIDED \*\* (L-LINES)**



POSTED SPEED LIMIT (M.P.H.)	RECOMMENDED MINIMUM SIGN SPACING
≤ 50	500'
≥ 55	1000'

STATE OF NORTH CAROLINA  
DEPT. OF TRANSPORTATION  
DIVISION OF HIGHWAYS  
RALEIGH, N.C.

**ROADWAYS INTERSECTING ALONG 2 WAY UNDIVIDED WORK ZONE (Y-LINES)**



**GENERAL NOTES**

- USE FLUORESCENT ORANGE SHEETING (TYPE VII OR HIGHER) ON ALL ADVANCED WORK ZONE SIGNS.
- DO NOT INSTALL ADVANCE WARNING SIGNS MORE THAN 3 DAYS PRIOR TO BEGINNING OF WORK.
- SIGNS SHOWN ARE REQUIRED FOR WORK ZONES THAT WILL REMAIN IN EFFECT OVERNIGHT. FOR SHORT-TERM DAILY MAINTENANCE TYPE OPERATIONS, THIS SIGNING APPLICATION IS OPTIONAL; MAY USE ONLY APPLICABLE ROADWAY STANDARD DRAWINGS INSTEAD. HOWEVER, IF THIS SIGNING APPLICATION IS USED, SIGNS MAY BE PORTABLE MOUNTED.
- ALL SIGN SPACING DIMENSIONS ARE APPROXIMATE, FIELD ADJUST AS NECESSARY OR AS DIRECTED.
- USE 3LB STEEL U-CHANNEL POST OR 4" X 4" WOOD POST FOR ALL WORK ZONE SIGNS. 3LB STEEL U-CHANNEL POSTS MUST MEET THE REQUIREMENTS OF STANDARD SPECIFICATION SECTION 1094-1(B), MAY BE GALVANIZED STEEL, OR MAY BE PAINTED GREEN BY THE POST MANUFACTURER. SQUARE STEEL TUBING POSTS HAVING EQUIVALENT STRENGTH OF THE 3 LB STEEL U-CHANNEL POST ARE ALSO ACCEPTABLE FOR USE. ERECT SIGNS PER ROADWAY STANDARD DRAWING 1110.01. PAYMENT FOR WOOD POSTS, 3LB STEEL U-CHANNEL AND SQUARE STEEL TUBING POSTS WITH SIGNS WILL BE MADE ACCORDING TO STANDARD SPECIFICATION "WORK ZONE SIGNS" SECTION 1110.
- WHEN NECESSARY, USE SPLICING IN ACCORDANCE WITH ROADWAY STANDARD DRAWING NO. 1110.01. REMOVE ENTIRE POST WHEN REMOVING SIGNS WITH SPLICED POSTS.
- DO NOT BACK BRACE SIGN SUPPORTS.
- \*\* TWO-WAY UNDIVIDED ADVANCE WARNING SIGN CONFIGURATION MAY BE USED ON URBAN MULTI-LANE FACILITIES WHERE CONDITIONS LIMIT THE USE OF DUAL MOUNTED SIGNS AS DETERMINED BY THE ENGINEER.

**LEGEND**

- ┆ STATIONARY SIGN
- ◀ DIRECTION OF TRAFFIC FLOW

DETAIL DRAWING FOR  
TWO-WAY UNDIVIDED  
WORK ZONE WARNING SIGNS

SHEET 1 OF 1

APPROVED: _____ DATE: _____	DETAIL DRAWING FOR TWO-WAY UNDIVIDED AND URBAN FREEWAYS ADVANCED WORK ZONE WARNING SIGNS		
	SCALE: NONE		
	DATE: 05/08		REVISIONS
	DESIGN BY: _____		7-98 10/01
	REVIEWED BY: JLP		10-98 03/04 01/01 11/04