

TIP PROJECT: B-4195

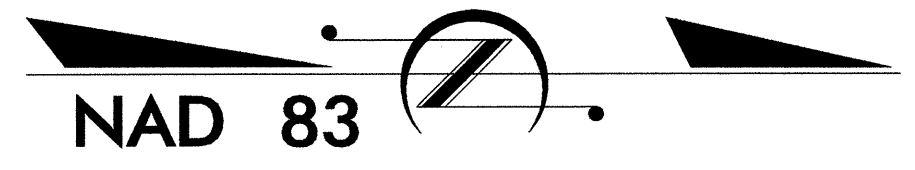
STATE OF NORTH CAROLINA
DIVISION OF HIGHWAYS

PLAN FOR PROPOSED
HIGHWAY EROSION CONTROL

McDOWELL COUNTY

LOCATION: BRIDGE #42 OVER THE SECOND BROAD RIVER ON SR 1163

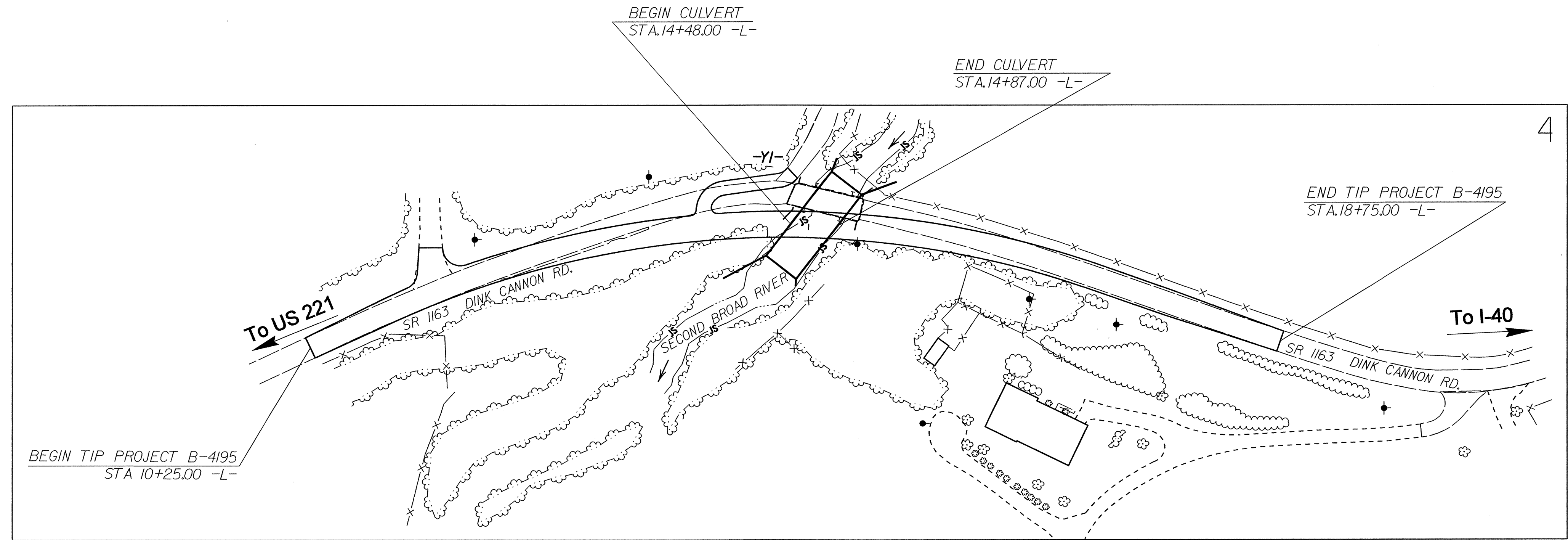
TYPE OF WORK: GRADING, PAVING, DRAINAGE, CULVERT



STATE	STATE PROJECT REFERENCE NO.	SHEET NO.	TOTAL SHEETS
N.C.	B-4195	EC-1	
STATE PROJ. NO.	F.A. PROJ. NO.	DESCRIPTION	

EROSION AND SEDIMENT CONTROL MEASURES

Std. #	Description	Symbol
1630.03	Temporary Silt Ditch	TD
1630.05	Temporary Diversion	TD
1605.01	Temporary Silt Fence	TSF
1606.01	Special Sediment Control Fence	SSCF
1622.01	Temporary Berms and Slope Drains	TBSD
1630.01	Riser Basin	RB
	Silt Basin Type B	SB
1633.01	Temporary Rock Silt Check Type-A	TRSCA
	Temporary Rock Silt Check Type-B	TRSCB
	Wattle	W
1634.01	Temporary Rock Sediment Dam Type-A	TRSDA
1634.02	Temporary Rock Sediment Dam Type-B	TRSDB
1635.01	Rock Pipe Inlet Sediment Trap Type-A	RPISTA
1635.02	Rock Pipe Inlet Sediment Trap Type-B	RPISTB
1630.04	Stilling Basin	SB
1630.06	Special Stilling Basin	SSB
	Rock Inlet Sediment Trap:	
1632.01	Type A	A
1632.02	Type B	B
1632.03	Type C	C
	Skimmer Basin	SKB
	Tiered Skimmer Basin	TSKB
	Infiltration Basin	IB

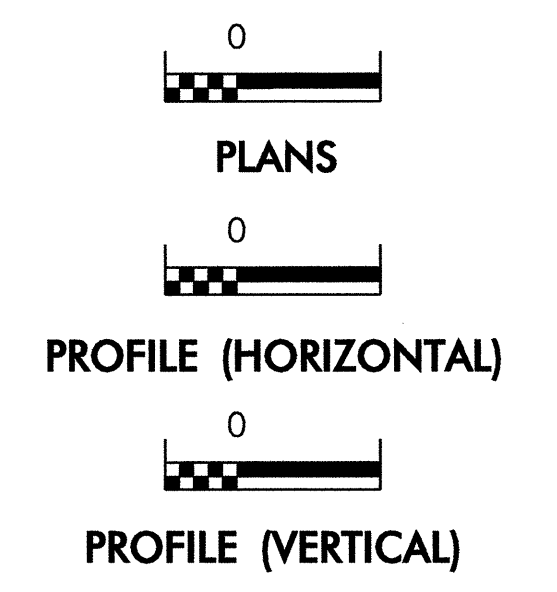


THIS PROJECT CONTAINS EROSION CONTROL PLANS FOR CLEARING AND GRUBBING PHASE OF CONSTRUCTION.

THIS PROJECT HAS BEEN DESIGNED TO SENSITIVE WATERSHED STANDARDS.

ENVIRONMENTALLY SENSITIVE AREA(S) EXIST ON THIS PROJECT
Refer To E. C. Special Provisions for Special Considerations.

GRAPHIC SCALE



ROADSIDE ENVIRONMENTAL UNIT
DIVISION OF HIGHWAYS
STATE OF NORTH CAROLINA

Prepared In the Office of:
ROADSIDE ENVIRONMENTAL UNIT
1 South Wilmington St.
Raleigh, NC 27611
2006 STANDARD SPECIFICATIONS

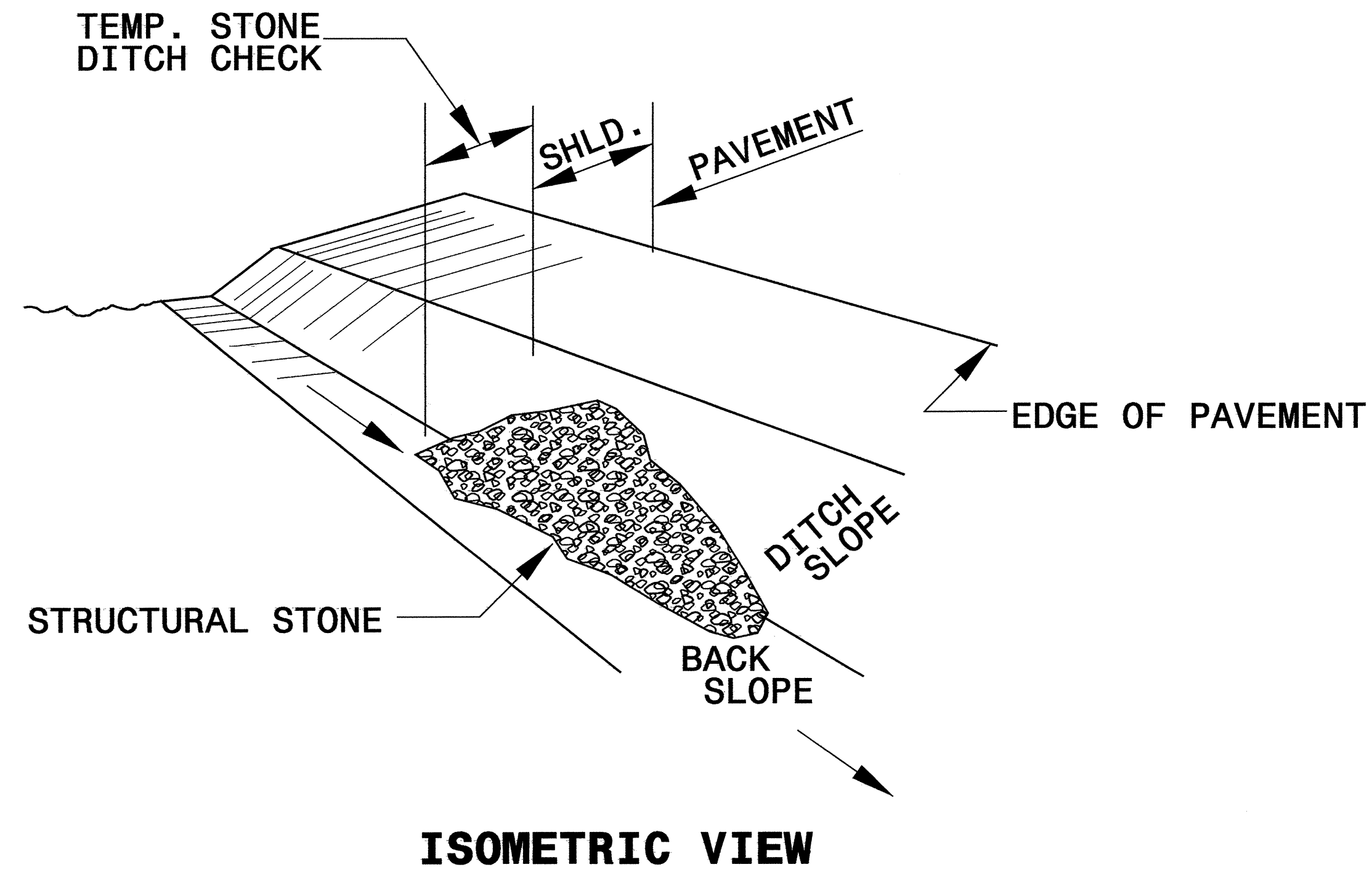
Roadway Standard Drawings
The following roadway english standards as appear in "Roadway Standard Drawings"- Roadway Design Unit - N. C. Department of Transportation - Raleigh, N. C., dated July 18, 2006 and the latest revision thereto are applicable to this project and by reference hereby are considered a part of these plans.

1605.01 Temporary Silt Fence	1630.06 Special Stilling Basin
1607.01 Gravel Construction Entrance	1632.03 Rock Inlet Sediment Trap Type C
1622.01 Temporary Berms and Slope Drains	1633.01 Temporary Rock Silt Check Type A
	1634.02 Temporary Rock Sediment Dam Type B

01-Jul-2008 10:10 AM C:\Users\jshd\Documents\2008\11\11\env\2568\env\1\details\4195_rdy_rsh.dgn

PROJECT REFERENCE NO. B-4195	SHEET NO. EC-2
RW SHEET NO.	
ROADWAY DESIGN ENGINEER	HYDRAULICS ENGINEER

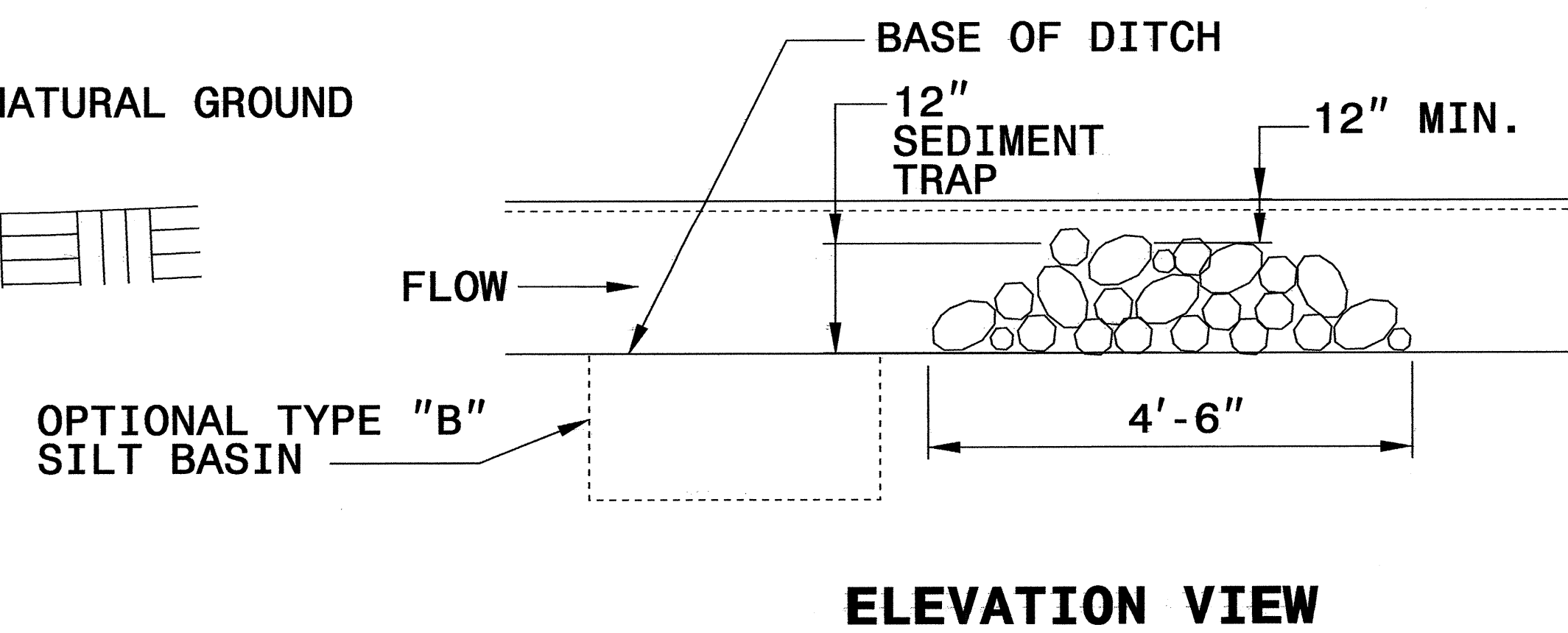
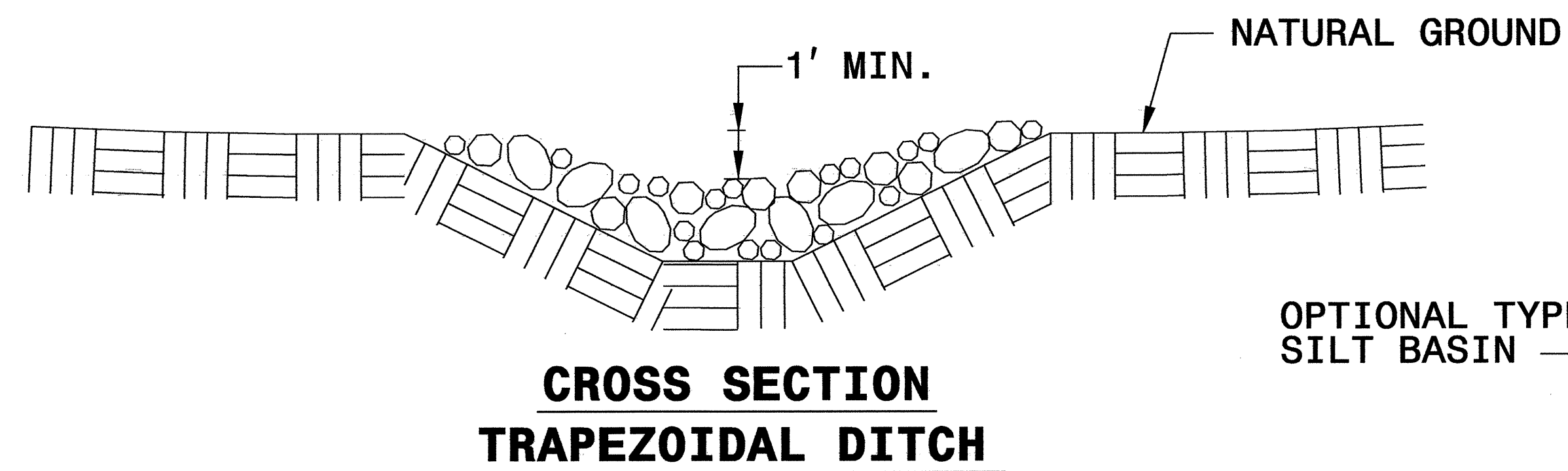
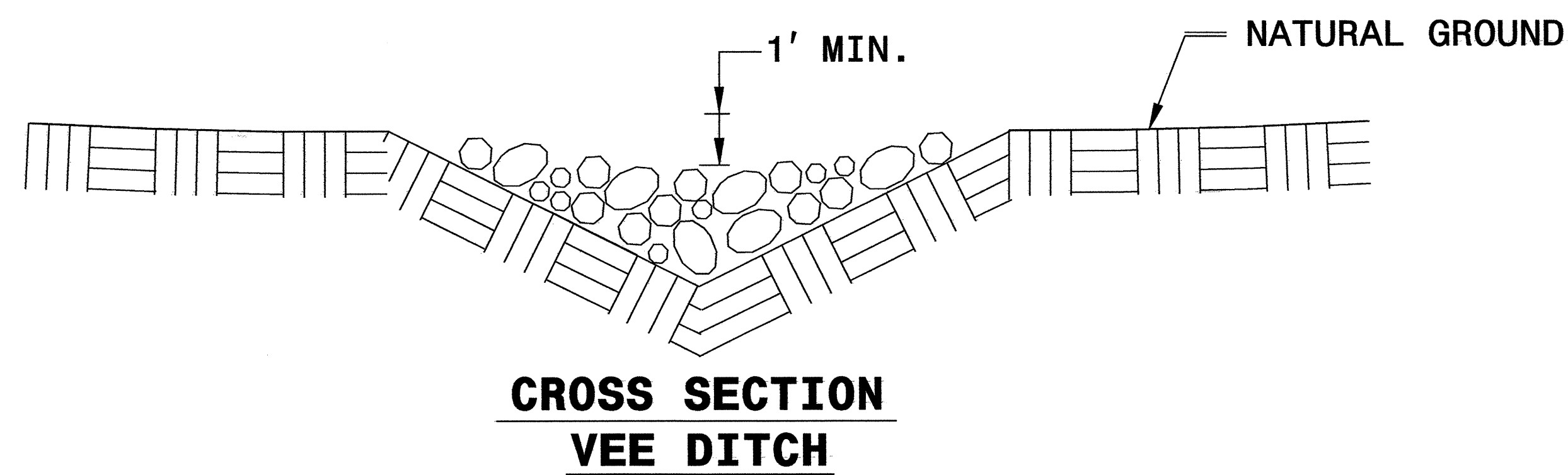
TEMPORARY ROCK SILT CHECK TYPE 'B' DETAIL



NOTES:

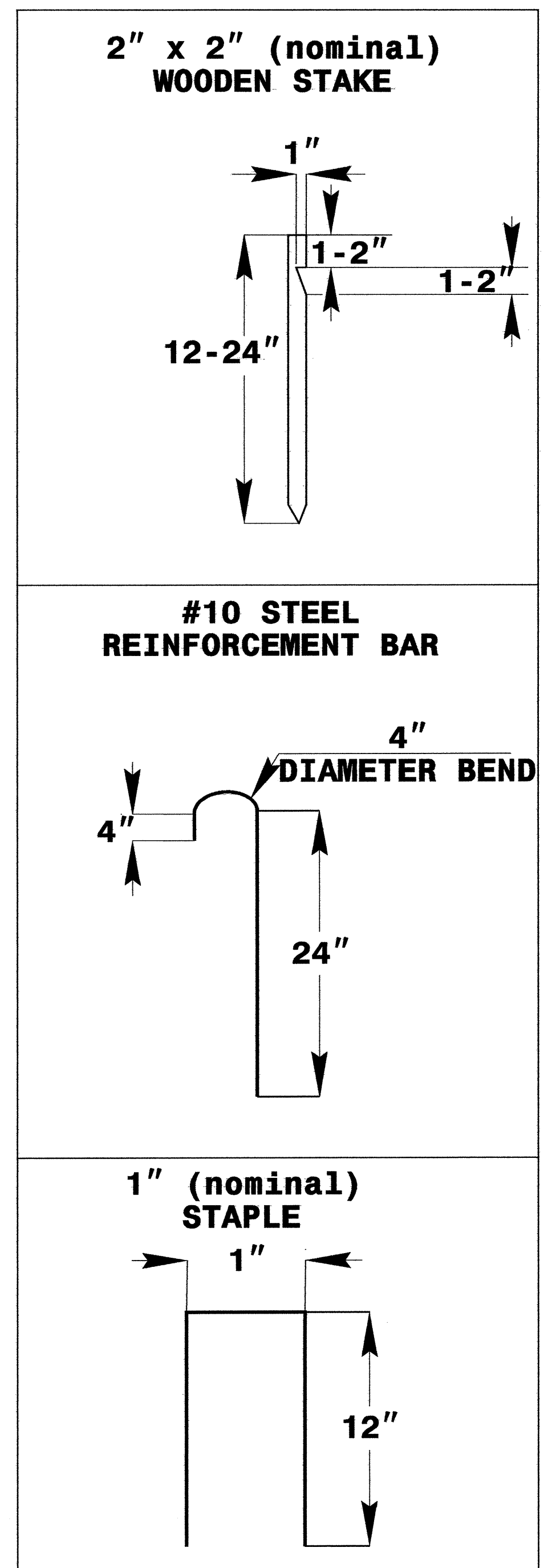
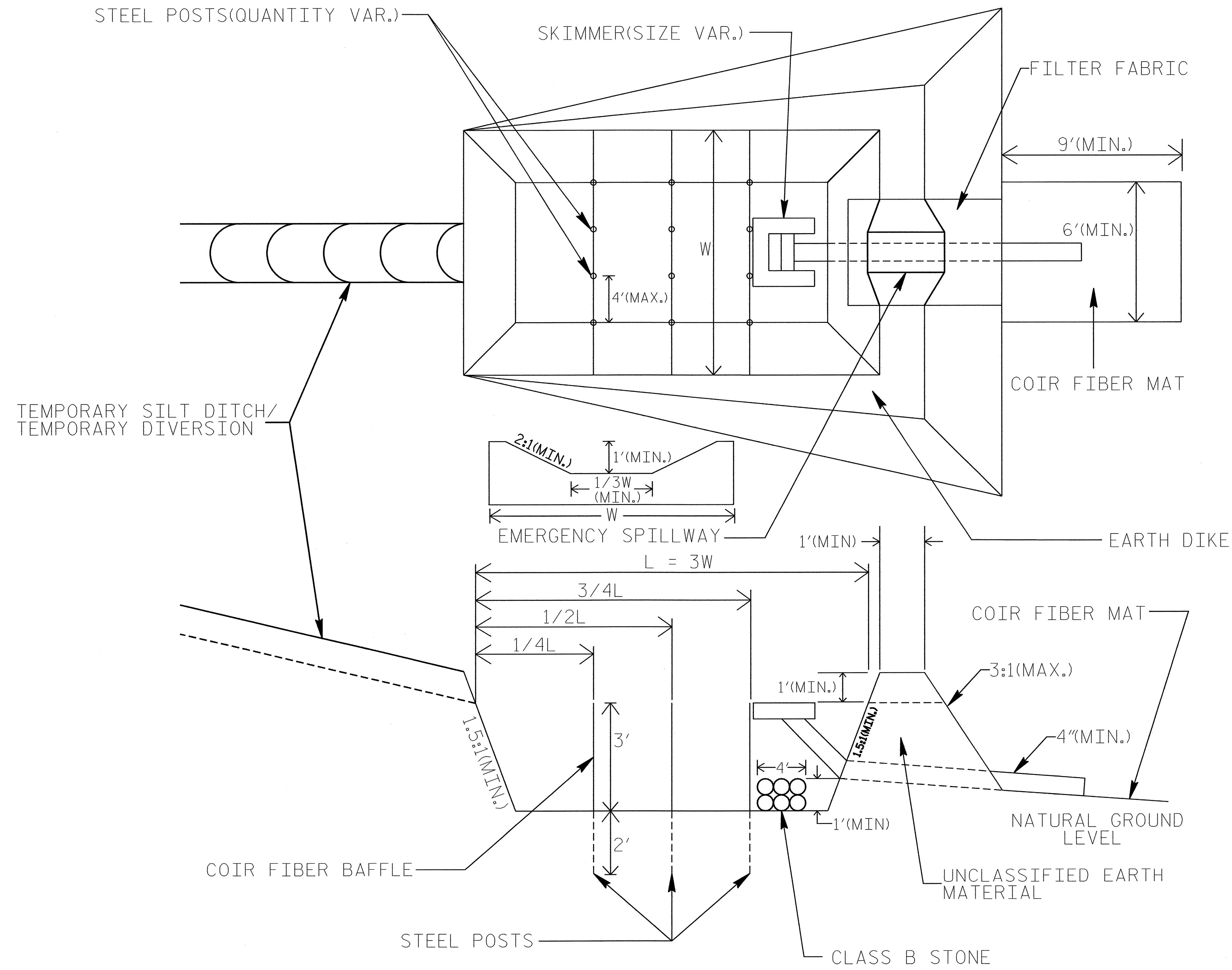
USE CLASS 'B' EROSION CONTROL STONE FOR STRUCTURAL STONE.

THE ENGINEER MAY DIRECT THE OPTION OF CLASS "A" STONE FOR SITES HAVING LESS THAN ONE (1) ACRE DRAINAGE AREA AND A DITCH GRADE LESS THAN 3%.



SKIMMER BASIN WITH BAFFLES DETAIL

PROJECT REFERENCE NO. B-4195	SHEET NO. EC-2B
RW SHEET NO.	
ROADWAY DESIGN ENGINEER	HYDRAULICS ENGINEER

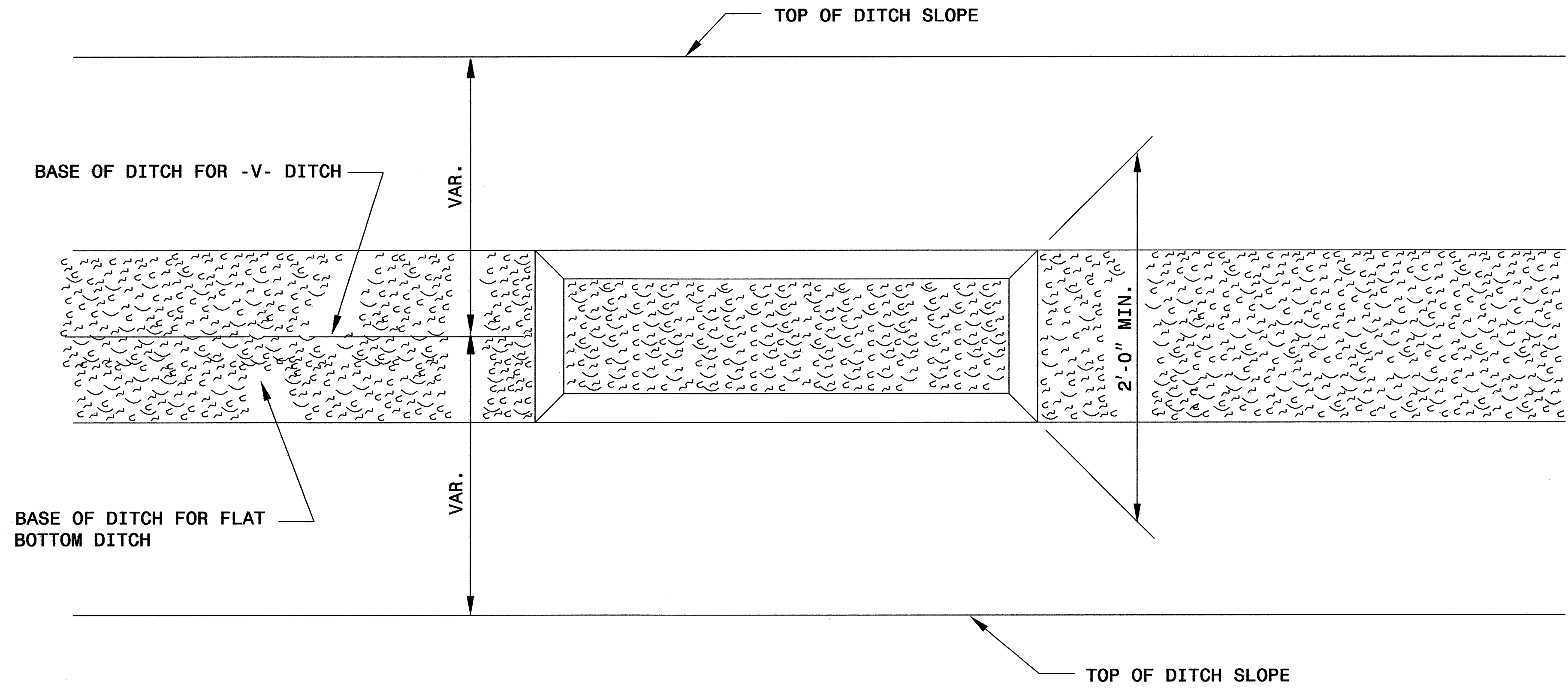


COIR FIBER MAT ANCHOR OPTIONS

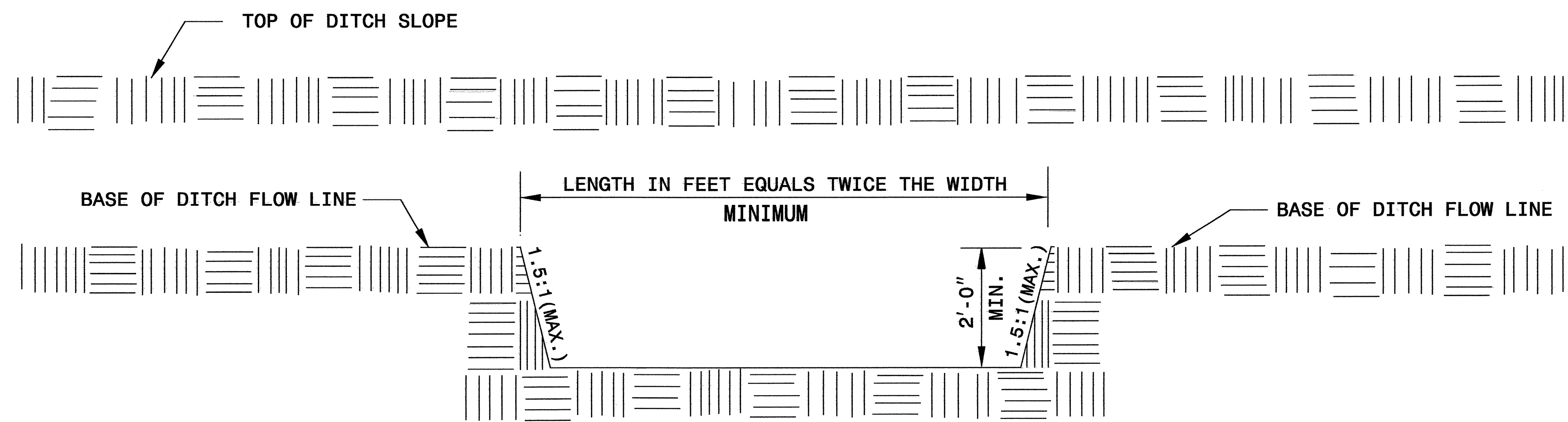
- NOTES:**
1. SEED AND PLACE MATTING FOR EROSION CONTROL ON SIDESLOPES.
 2. LIMIT EARTH DIKE HEIGHT TO 5 FT.

PROJECT REFERENCE NO. B-4195	SHEET NO. EC-2C
RW SHEET NO.	
ROADWAY DESIGN ENGINEER	HYDRAULICS ENGINEER

SILT BASIN 'B' DETAIL



PLAN

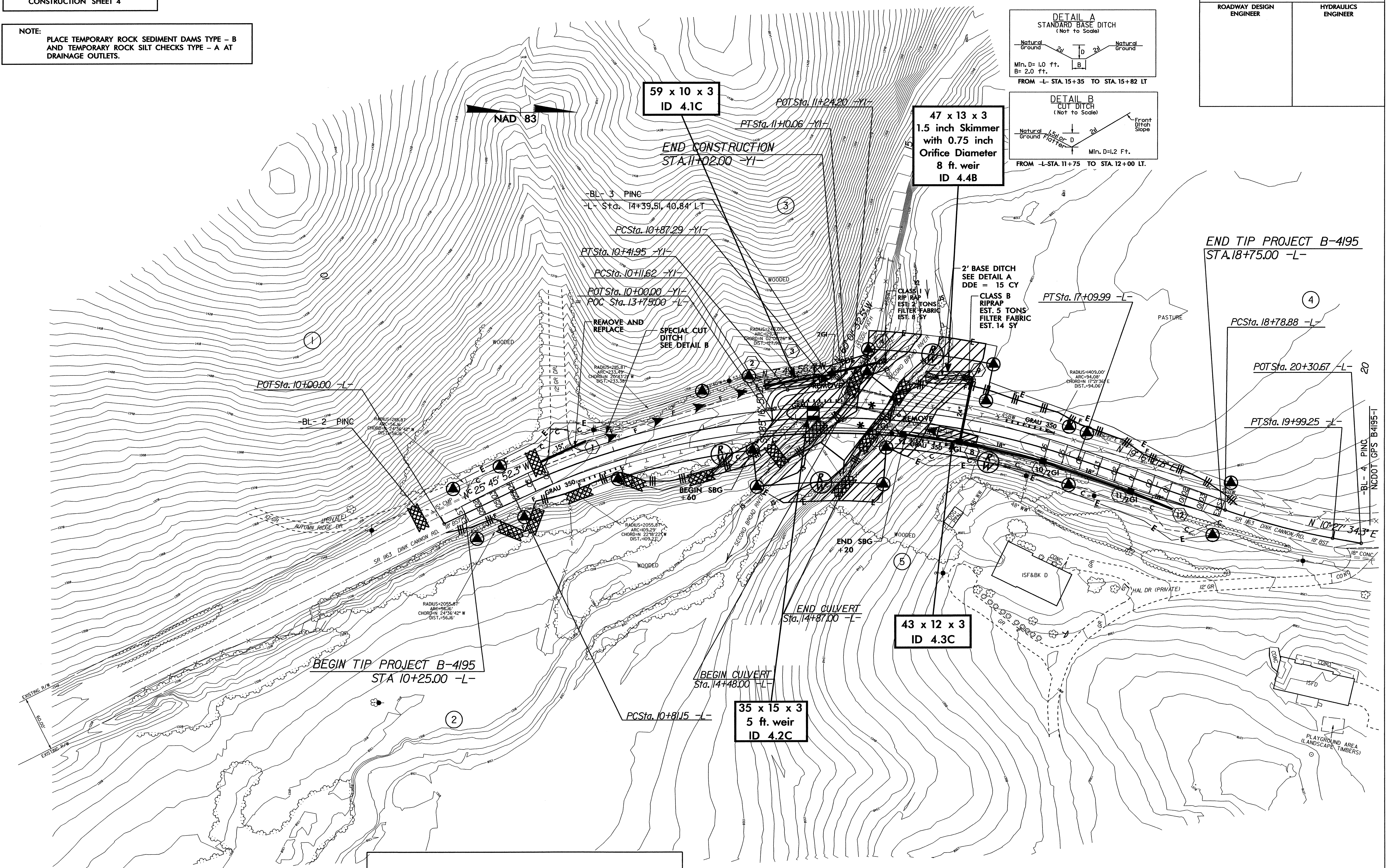
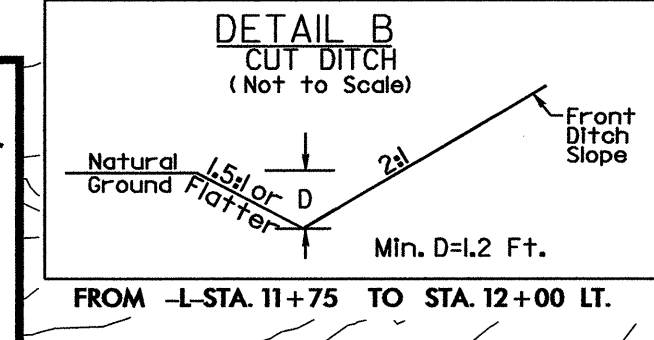
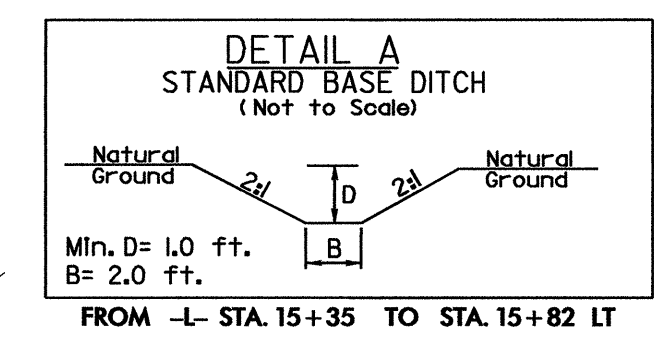


ELEVATION

PROJECT REFERENCE NO.	SHEET NO.
B-4195	EC-4/CONST.4
RW SHEET NO.	
ROADWAY DESIGN ENGINEER	HYDRAULICS ENGINEER

CLEARING AND GRUBBING
EROSION CONTROL FOR
CONSTRUCTION SHEET 4

NOTE:
PLACE TEMPORARY ROCK SEDIMENT DAMS TYPE - B
AND TEMPORARY ROCK SILT CHECKS TYPE - A AT
DRAINAGE OUTLETS.



 ENVIRONMENTALLY SENSITIVE AREA
SEE PROJECT SPECIAL PROVISIONS

* SEE Std.862.01, SHEET 9 of 11, FOR GUARDRAIL PLACEMENT OVER CULVERT

DESIGN EXCEPTION REQUIRED FOR HORIZONTAL STOPPING SIGHT DISTANCE.

SEE SHEET 5 FOR -L- & -YI- PROFILE.
SEE SHEETS C-1 THRU C-3 FOR CULVERT PLANS.

5/14/99
0:\jll\2008 10410
objects-b-4195-ec-4-const-4
design-b-4195-ec-4-const-4
ec-4-const-4.dgn

PROJECT REFERENCE NO.	SHEET NO.
B-4195	EC-5/CONST.4
RW SHEET NO.	
ROADWAY DESIGN ENGINEER	HYDRAULICS ENGINEER

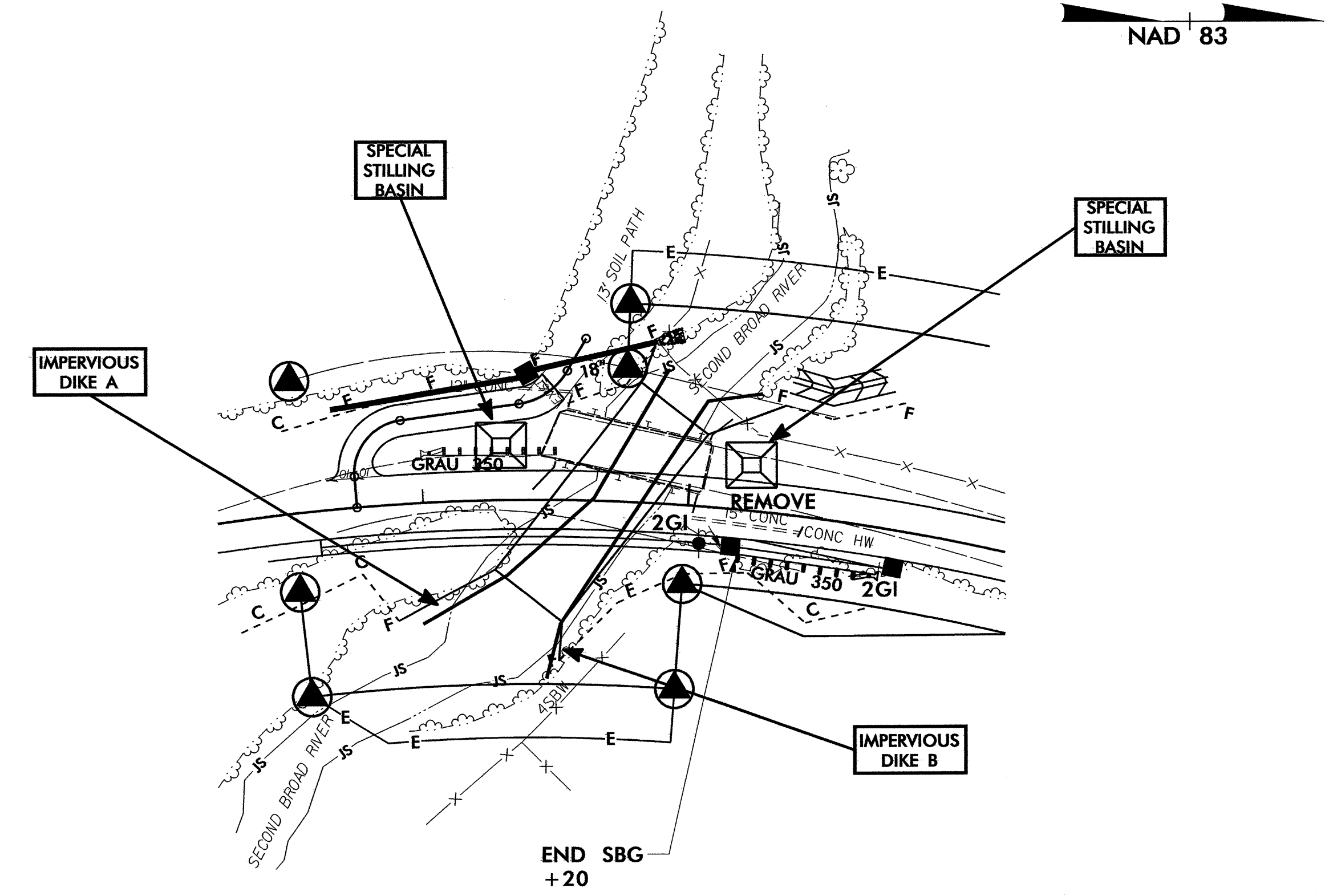
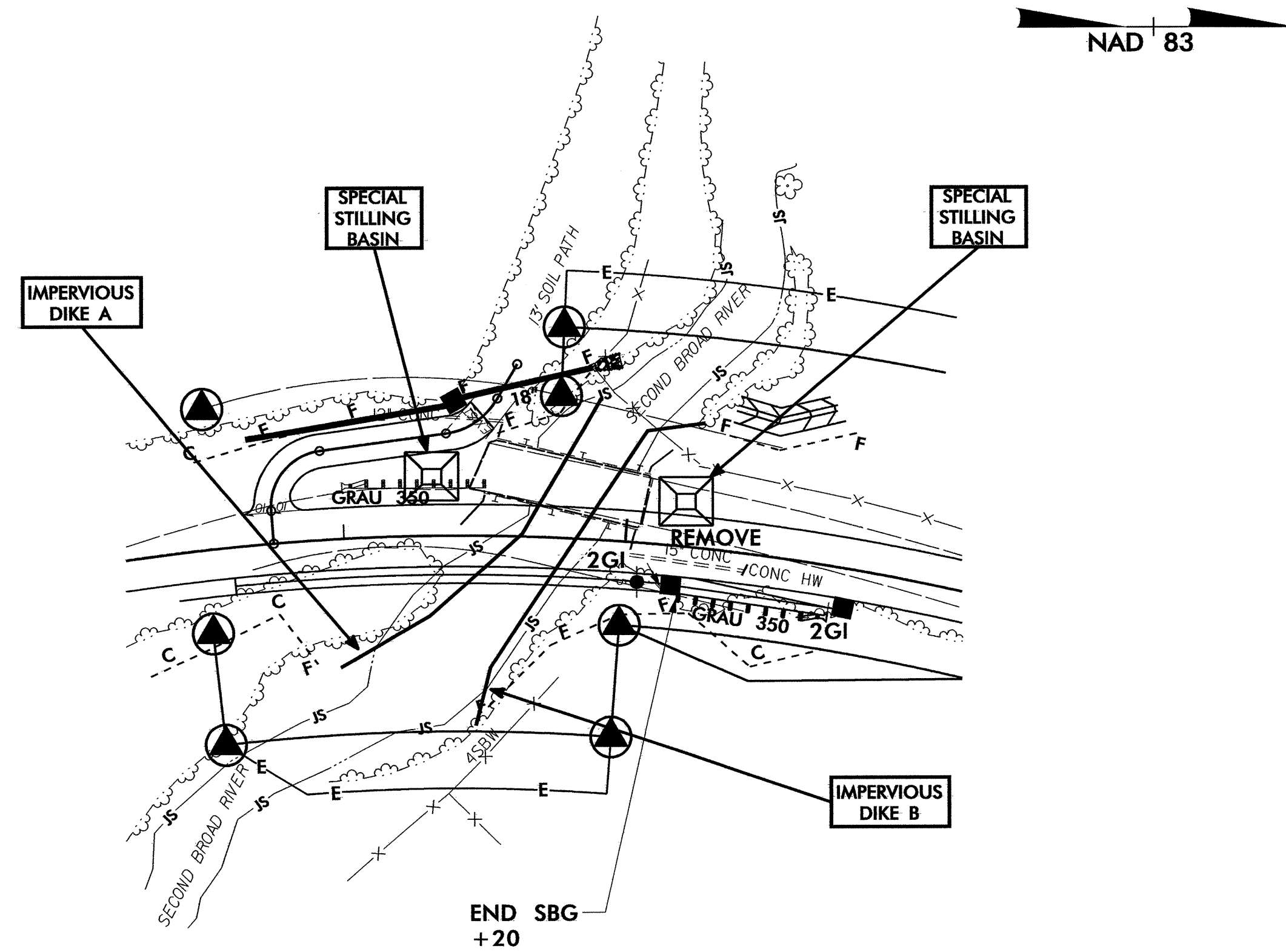
CULVERT CONSTRUCTION SEQUENCE STA. 14+48 -L-

PHASE I

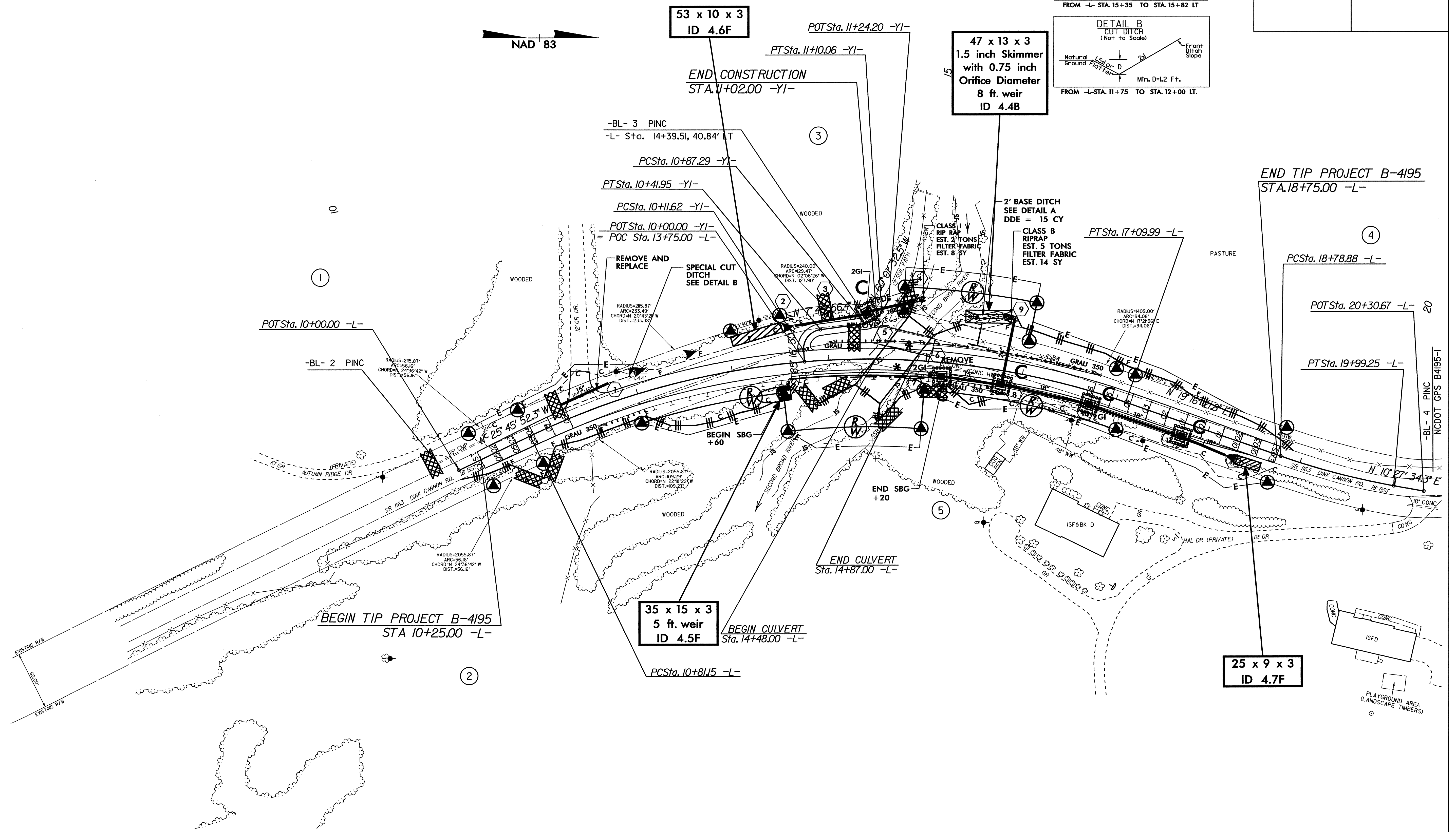
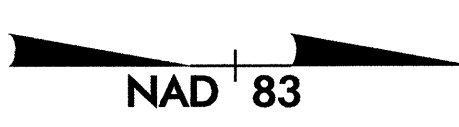
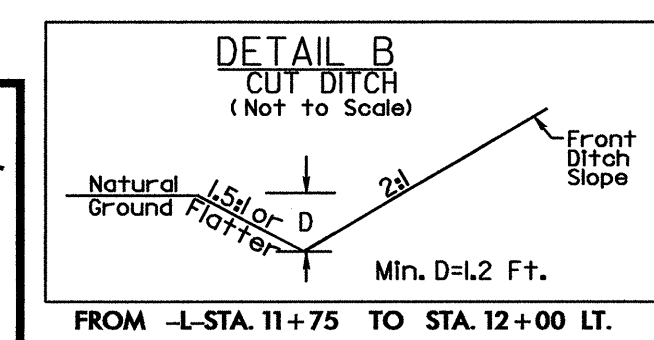
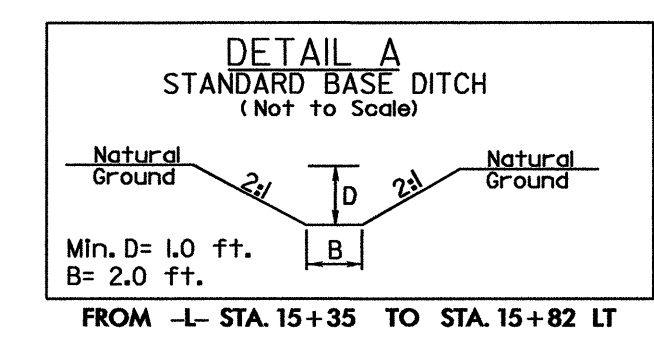
1. UTILIZE SPECIAL STILLING BASIN(S) AS NEEDED THROUGHOUT CULVERT INSTALLATION TO MAINTAIN DRY WORK AREA.
2. CONSTRUCT IMPERVIOUS DIKE A AND B.
3. DIVERT FLOW BETWEEN IMPERVIOUS DIKE A AND B.

PHASE II

4. CONSTRUCT FOOTINGS AND CULVERT.
5. REMOVE ALL IMPERVIOUS DIKES AND SPECIAL STILLING BASIN(S).
6. COMPLETE ROADWAY CONSTRUCTION.



PROJECT REFERENCE NO.	SHEET NO.
B-4195	EC-6/CONST.4
RW SHEET NO.	
ROADWAY DESIGN ENGINEER	HYDRAULICS ENGINEER



* SEE Std.862.01, SHEET 9 of 11, FOR GUARDRAIL PLACEMENT OVER CULVERT

DESIGN EXCEPTION REQUIRED FOR HORIZONTAL STOPPING SIGHT DISTANCE.

SEE SHEET 5 FOR -L- & -YI- PROFILE.
SEE SHEETS C-1 THRU C-3 FOR CULVERT PLANS.

5/14/09
0:\jll\2008 10\10\0\mental\design\ba4195.rdy.psh.04.dgn
PROJECT: B-4195
SHEET: EC-6/CONST.4