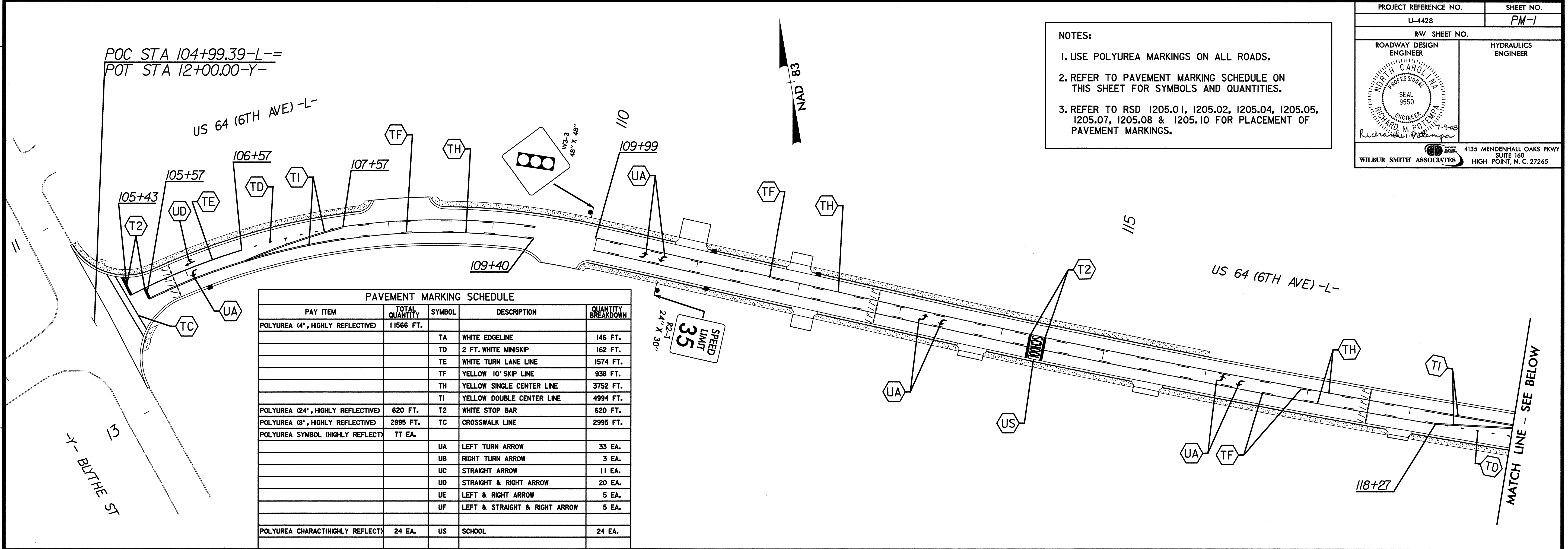
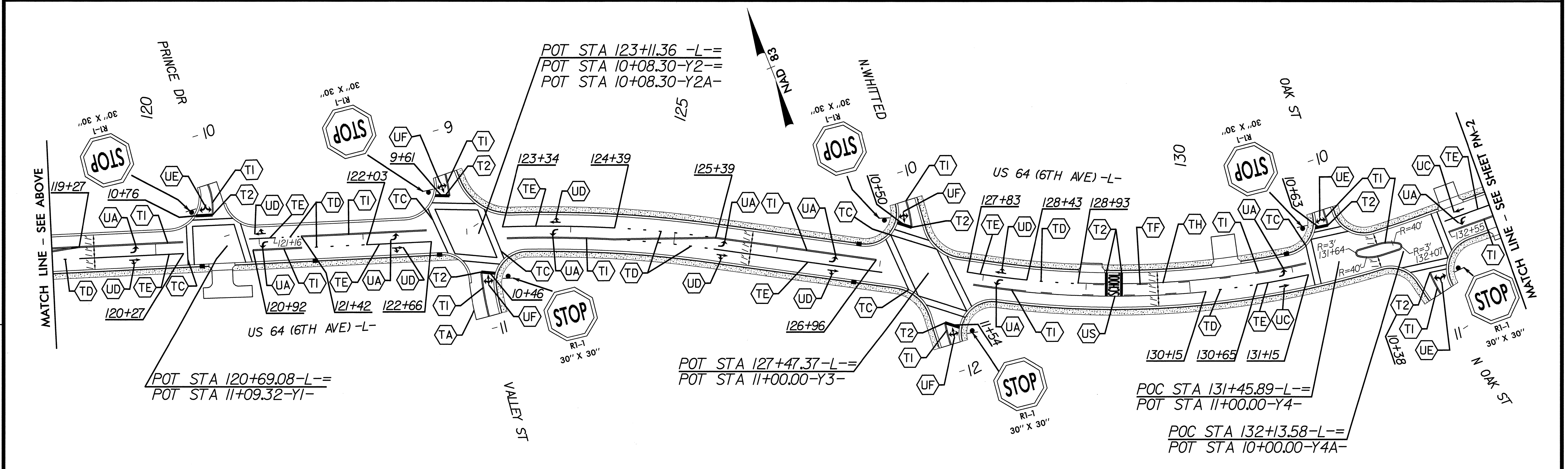


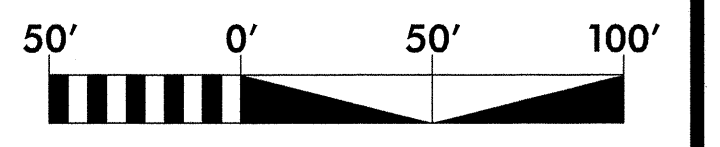
NOTES:  
 1. USE POLYUREA MARKINGS ON ALL ROADS.  
 2. REFER TO PAVEMENT MARKING SCHEDULE ON THIS SHEET FOR SYMBOLS AND QUANTITIES.  
 3. REFER TO RSD 1205.01, 1205.02, 1205.04, 1205.05, 1205.07, 1205.08 & 1205.10 FOR PLACEMENT OF PAVEMENT MARKINGS.



PAVEMENT MARKING SCHEDULE				
PAY ITEM	TOTAL QUANTITY	SYMBOL	DESCRIPTION	QUANTITY BREAKDOWN
POLYUREA (4", HIGHLY REFLECTIVE)	11566 FT.	TA	WHITE EDGELINE	146 FT.
		TD	2 FT. WHITE MINISKIP	162 FT.
		TE	WHITE TURN LANE LINE	1574 FT.
		TF	YELLOW 10' SKIP LINE	938 FT.
		TH	YELLOW SINGLE CENTER LINE	3752 FT.
		TI	YELLOW DOUBLE CENTER LINE	4994 FT.
POLYUREA (24", HIGHLY REFLECTIVE)	620 FT.	T2	WHITE STOP BAR	620 FT.
POLYUREA (8", HIGHLY REFLECTIVE)	2995 FT.	TC	CROSSWALK LINE	2995 FT.
POLYUREA SYMBOL (HIGHLY REFLECT)	77 EA.			
		UA	LEFT TURN ARROW	33 EA.
		UB	RIGHT TURN ARROW	3 EA.
		UC	STRAIGHT ARROW	11 EA.
		UD	STRAIGHT & RIGHT ARROW	20 EA.
		UE	LEFT & RIGHT ARROW	5 EA.
		UF	LEFT & STRAIGHT & RIGHT ARROW	5 EA.
POLYUREA CHARACT(HIGHLY REFLECT)	24 EA.	US	SCHOOL	24 EA.



**PAVEMENT MARKING & SIGNING PLAN**



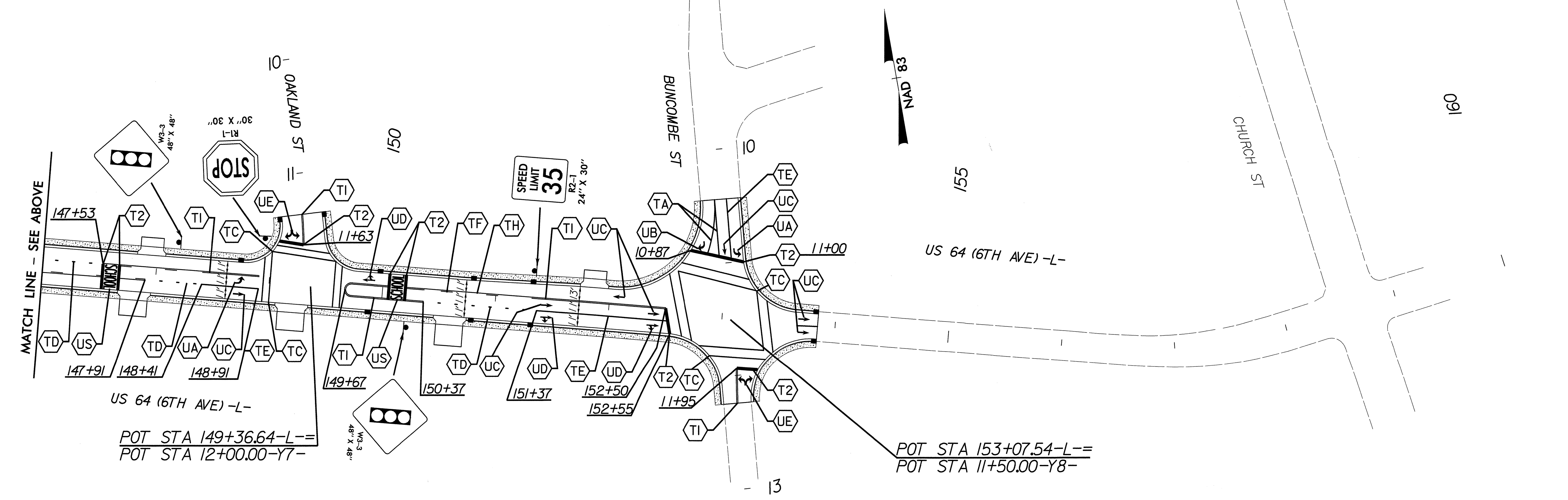
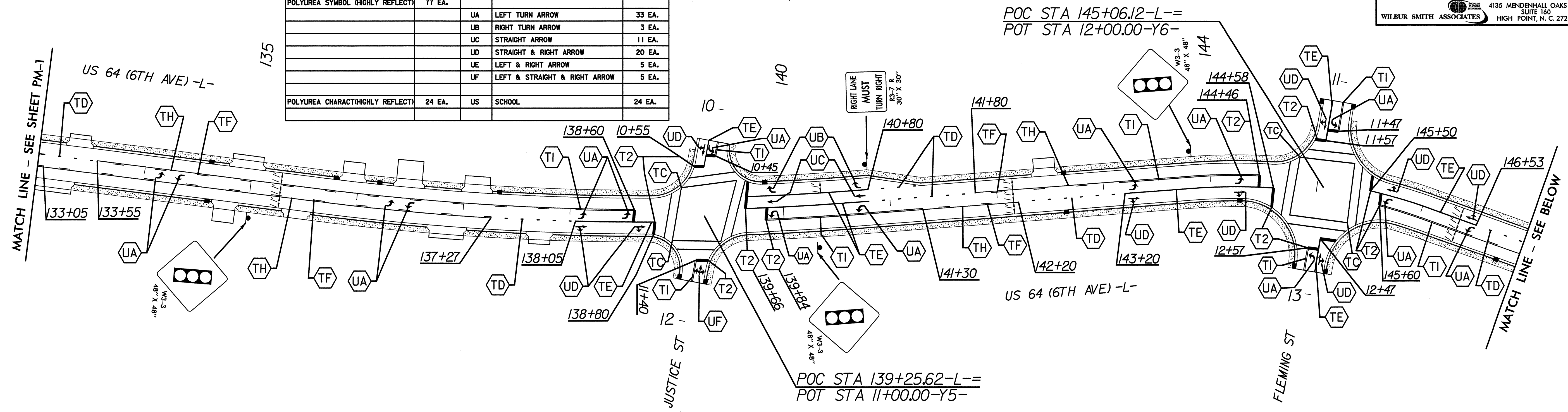
REVISIONS

FILE: R:\NCDOT\14428\Roadway\Func\New\_Alt\_PSE\14428\_rdy\_pml.dgn  
 DATE: 08/20/08 12:38:20 PM

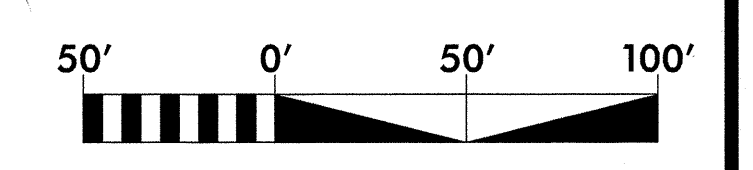
PAVEMENT MARKING SCHEDULE				
PAY ITEM	TOTAL QUANTITY	SYMBOL	DESCRIPTION	QUANTITY BREAKDOWN
POLYUREA (4", HIGHLY REFLECTIVE)	11566 FT.			
		TA	WHITE EDGELINE	146 FT.
		TD	2 FT. WHITE MINISKIP	162 FT.
		TE	WHITE TURN LANE LINE	1574 FT.
		TF	YELLOW 10' SKIP LINE	938 FT.
		TH	YELLOW SINGLE CENTER LINE	3752 FT.
		TI	YELLOW DOUBLE CENTER LINE	4994 FT.
POLYUREA (24", HIGHLY REFLECTIVE)	620 FT.	T2	WHITE STOP BAR	620 FT.
POLYUREA (8", HIGHLY REFLECTIVE)	2995 FT.	TC	CROSSWALK LINE	2995 FT.
POLYUREA SYMBOL (HIGHLY REFLECT)	T7 EA.			
		UA	LEFT TURN ARROW	33 EA.
		UB	RIGHT TURN ARROW	3 EA.
		UC	STRAIGHT ARROW	11 EA.
		UD	STRAIGHT & RIGHT ARROW	20 EA.
		UE	LEFT & RIGHT ARROW	5 EA.
		UF	LEFT & STRAIGHT & RIGHT ARROW	5 EA.
POLYUREA CHARACT(HIGHLY REFLECT)	24 EA.	US	SCHOOL	24 EA.

NOTES:  
 1. USE POLYUREA MARKINGS ON ALL ROADS.  
 2. REFER TO PAVEMENT MARKING SCHEDULE ON THIS SHEET FOR SYMBOLS AND QUANTITIES.  
 3. REFER TO RSD 1205.01, 1205.02, 1205.04, 1205.05, 1205.07, 1205.08 & 1205.10 FOR PLACEMENT OF PAVEMENT MARKINGS.

PROJECT REFERENCE NO. U-4428	SHEET NO. PM-2
ROADWAY DESIGN ENGINEER RICHARD M. POLETTA SEAL 9550 REGISTERED PROFESSIONAL ENGINEER EXPIRES 12-31-08	HYDRAULICS ENGINEER
WILBUR SMITH ASSOCIATES 4135 MENDENHALL OAKS PKWY SUITE 160 HIGH POINT, N. C. 27265	



PAVEMENT MARKING & SIGNING PLAN



REVISIONS

FILE: R:\INC001\4428\Roadway\Plan\New\_Alt\_PSE\U4428\_Pbv\_pmt.dgn  
 DATE: 02/20/08 12:38:22 PM