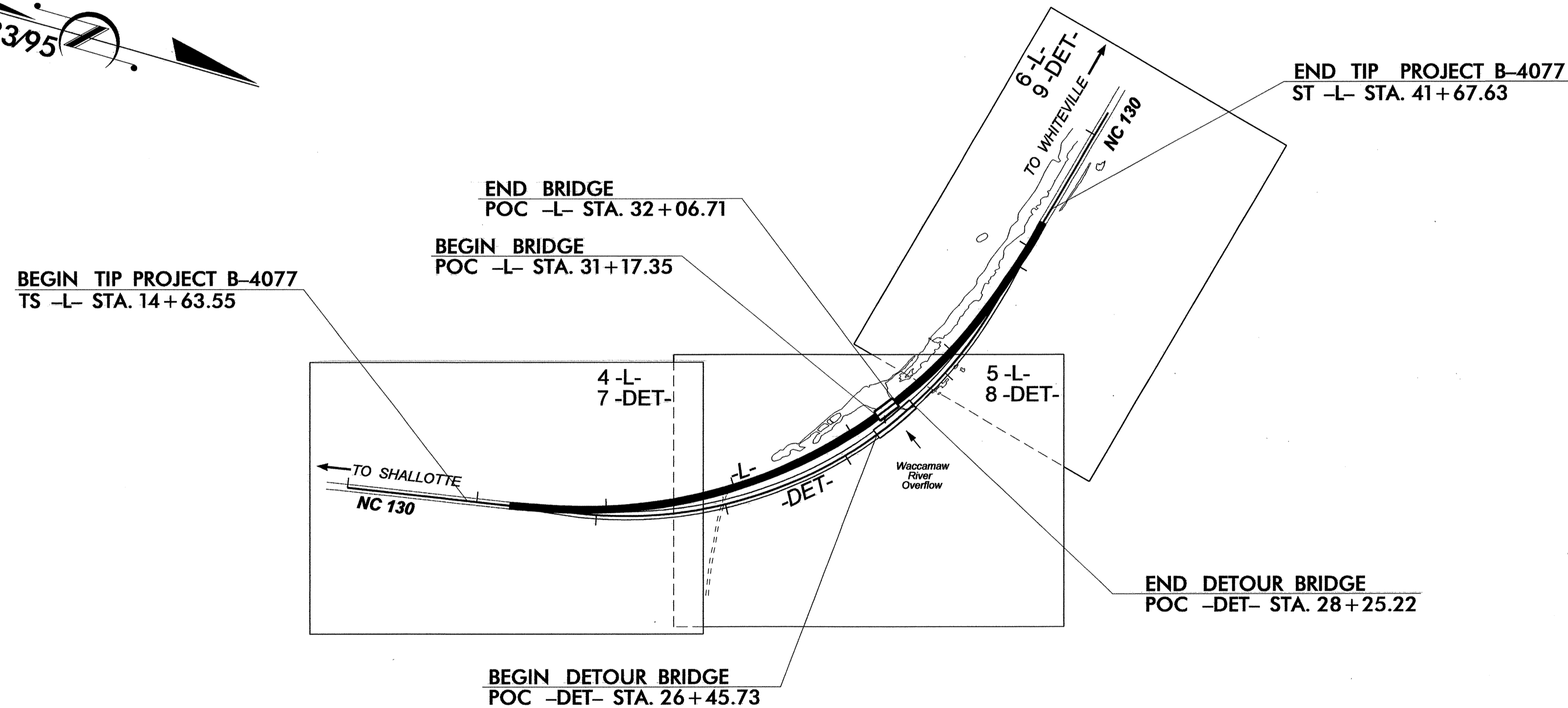
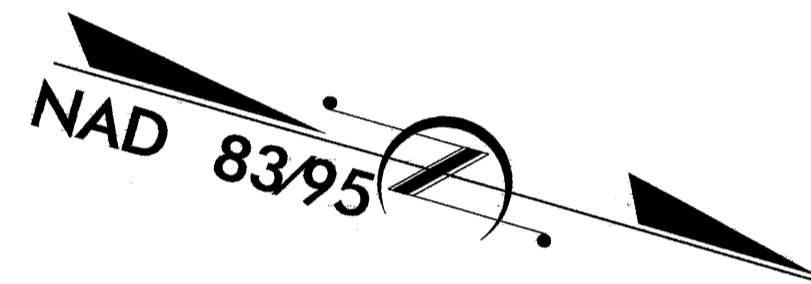


TIP PROJECT: B-4077

STATE OF NORTH CAROLINA
 DIVISION OF HIGHWAYS
 PLAN FOR PROPOSED
 HIGHWAY EROSION CONTROL
COLUMBUS COUNTY

LOCATION: BRIDGE NO. 25 ON NC 130 OVER WACCAMAW RIVER OVERFLOW

TYPE OF WORK: GRADING, DRAINAGE, PAVING, GUARDRAIL, THERMOPLASTIC PAVEMENT MARKINGS, SNOW PLOWABLE PAVEMENT MARKERS & STRUCTURE



STATE	STATE PROJECT REFERENCE NO.	SHEET NO.	TOTAL SHEETS
N.C.	B-4077	EC-1	
STATE PROJ. NO.	F.A. PROJ. NO.	DESCRIPTION	

EROSION AND SEDIMENT CONTROL MEASURES

Std. #	Description	Symbol
1630.03	Temporary Silt Ditch	TD
1630.05	Temporary Diversion	TD
1605.01	Temporary Silt Fence	III III III
1606.01	Special Sediment Control Fence	ZZZZZZZZZZ
1622.01	Temporary Berms and Slope Drains	—
1630.01	Riser Basin	⊙
	Silt Basin Type B	▨
1633.01	Temporary Rock Silt Check Type-A	▨
	Temporary Rock Silt Check Type-B	▨
	Wattle	—
1634.01	Temporary Rock Sediment Dam Type-A	▨
1634.02	Temporary Rock Sediment Dam Type-B	▨
1635.01	Rock Pipe Inlet Sediment Trap Type-A	⊙
1635.02	Rock Pipe Inlet Sediment Trap Type-B	⊙
1630.04	Stilling Basin	▭
1630.06	Special Stilling Basin	▭
	Rock Inlet Sediment Trap:	
1632.01	Type A	A
1632.02	Type B	B
1632.03	Type C	C
	Skimmer Basin	▭
	Tiered Skimmer Basin	▭
	Infiltration Basin	▭

THIS PROJECT CONTAINS EROSION CONTROL PLANS FOR CLEARING AND GRUBBING PHASE OF CONSTRUCTION.

THIS PROJECT HAS BEEN DESIGNED TO SENSITIVE WATERSHED STANDARDS.

ENVIRONMENTALLY SENSITIVE AREA(S) EXIST ON THIS PROJECT
 Refer To E. C. Special Provisions for Special Considerations.

GRAPHIC SCALE

0

PLANS

0

PROFILE (HORIZONTAL)

0

PROFILE (VERTICAL)

ROADSIDE ENVIRONMENTAL UNIT
 DIVISION OF HIGHWAYS
 STATE OF NORTH CAROLINA

Prepared In the Office of:
ROADSIDE ENVIRONMENTAL UNIT
 1 South Wilmington St.
 Raleigh, NC 27611
2006 STANDARD SPECIFICATIONS

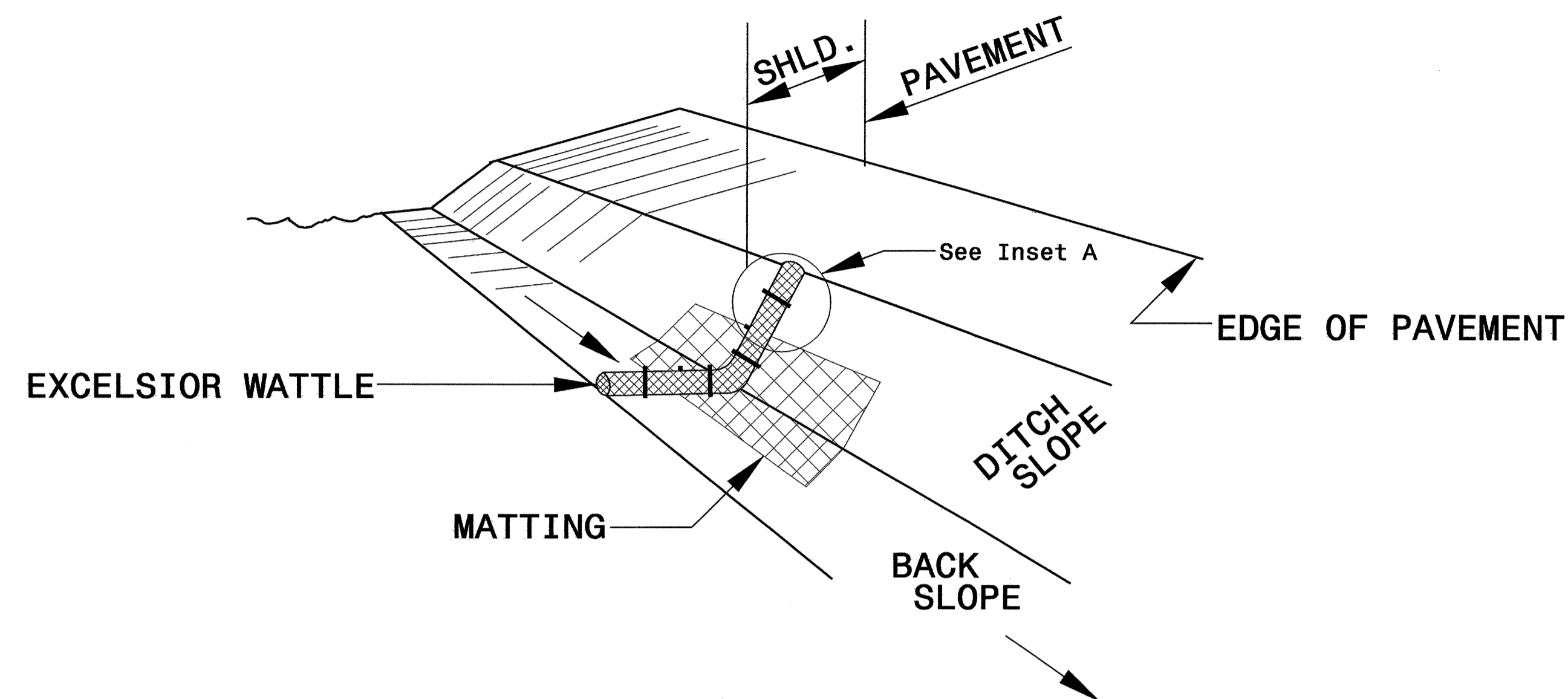
Roadway Standard Drawings

The following roadway english standards as appear in "Roadway Standard Drawings"- Roadway Design Unit - N. C. Department of Transportation - Raleigh, N. C., dated July 18, 2006 and the latest revision thereto are applicable to this project and by reference hereby are considered a part of these plans.

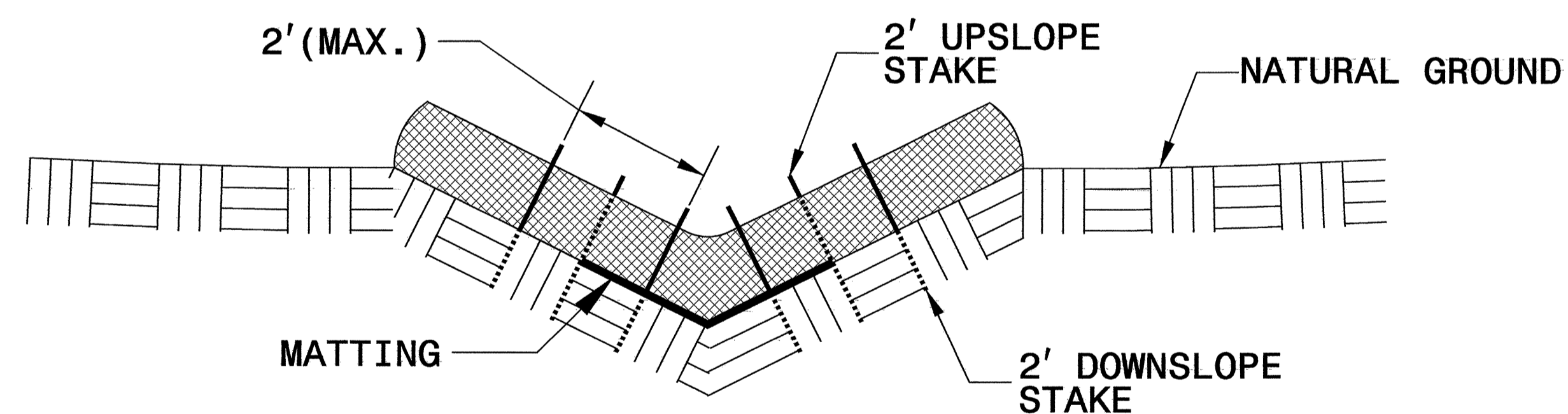
1605.01 Temporary Silt Fence
 1606.01 Special Sediment Control Fence
 1607.01 Gravel Construction Entrance
 1622.01 Temporary Berms and Slope Drains
 1630.06 Special Stilling Basin
 1632.03 Rock Inlet Sediment Trap Type C
 1633.01 Temporary Rock Silt Check Type A
 1635.02 Rock Pipe Inlet Sediment Trap Type B

PROJECT REFERENCE NO. B-4077	SHEET NO. EC-2
RW SHEET NO.	
ROADWAY DESIGN ENGINEER	HYDRAULICS ENGINEER

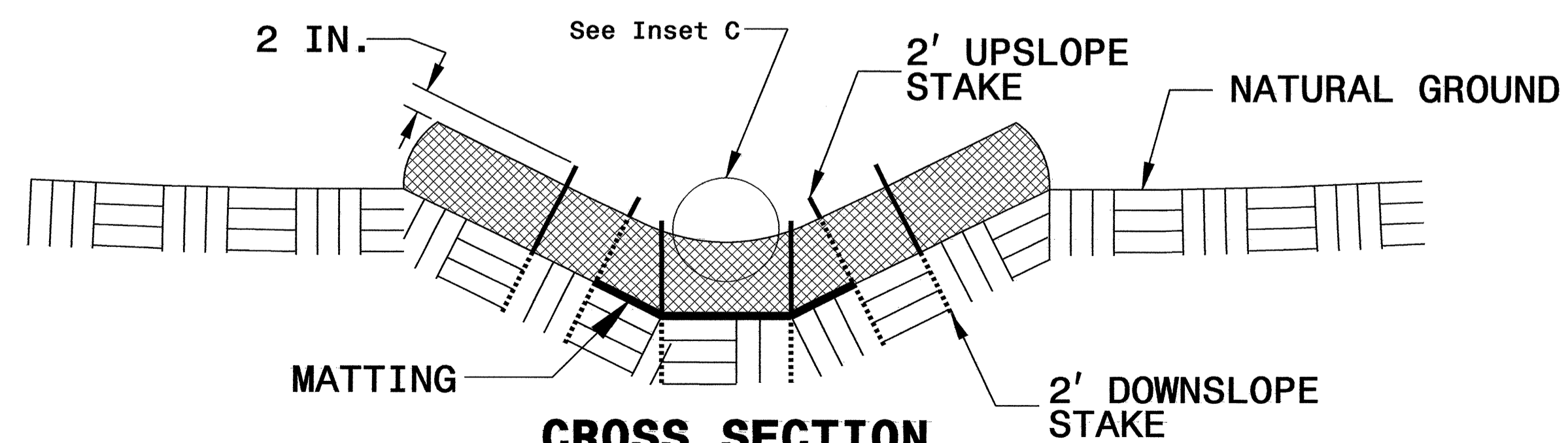
WATTLE WITH POLYACRYLAMIDE DETAIL



ISOMETRIC VIEW



**CROSS SECTION
VEE DITCH**



**CROSS SECTION
TRAPEZOIDAL DITCH**

NOTES:

USE MINIMUM 12 IN. DIAMETER EXCELSIOR WATTLE.

USE 2 FT. WOODEN STAKES WITH A 2 IN. BY 2 IN. CROSS SECTION.

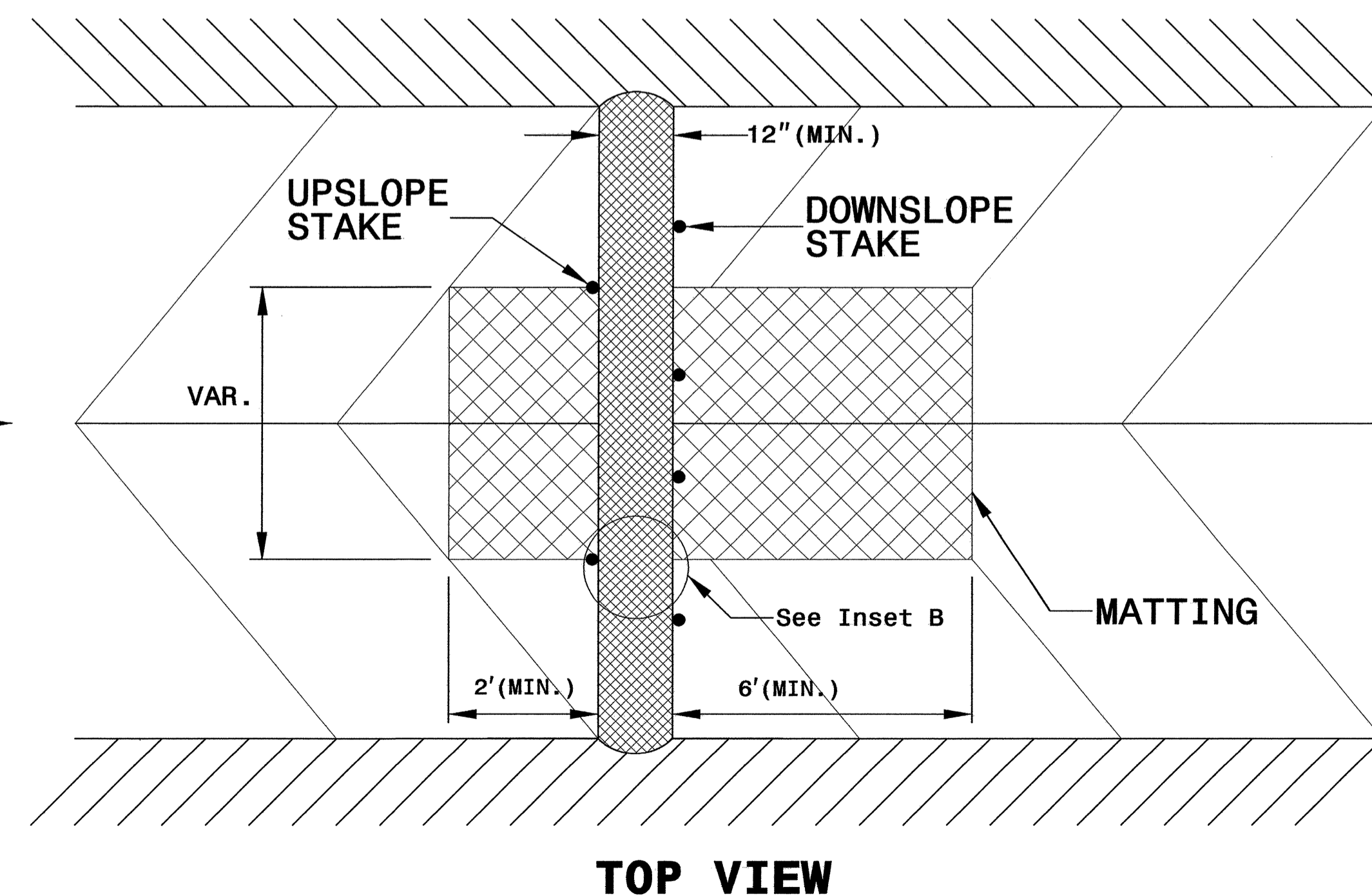
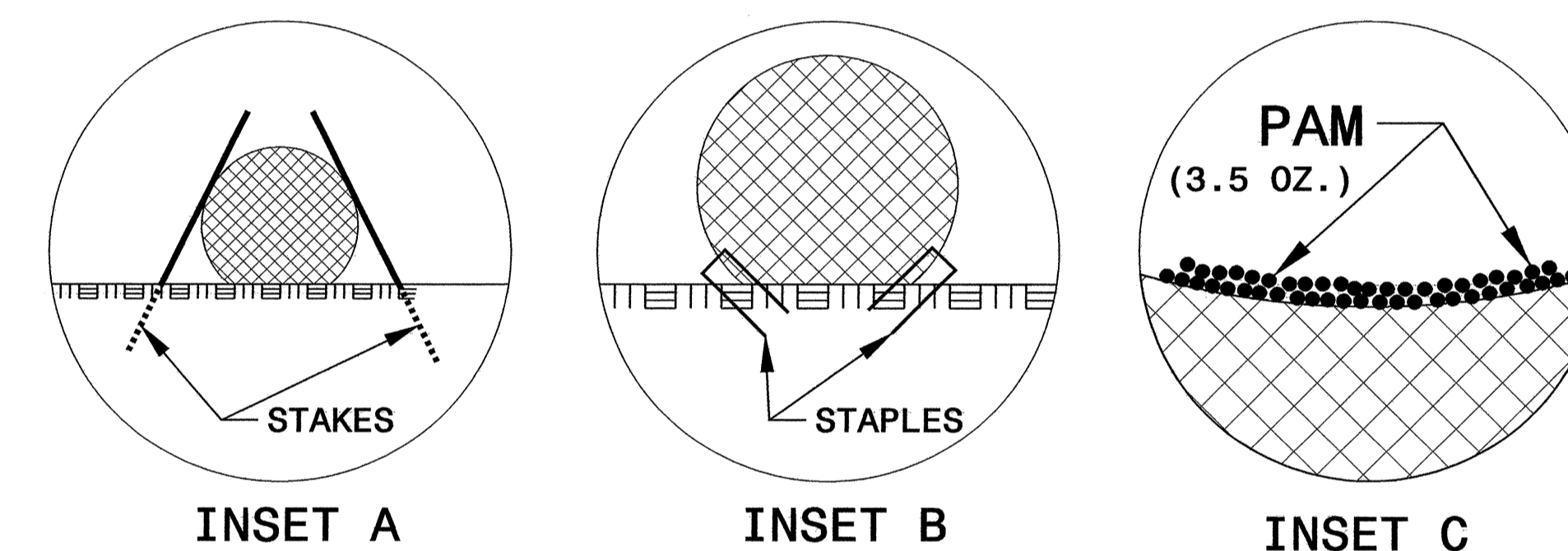
INSTALL A MINIMUM OF 2 UPSLOPE STAKES AND 4 DOWNSLOPE STAKES AT AN ANGLE TO WEDGE WATTLE TO BOTTOM OF DITCH.

PROVIDE STAPLES MADE OF 0.125 IN. DIAMETER STEEL WIRE FORMED INTO A U SHAPE NOT LESS THAN 12" IN LENGTH.

INSTALL STAPLES APPROXIMATELY EVERY 1 LINEAR FOOT ON BOTH SIDES OF WATTLE AND AT EACH END TO SECURE IT TO THE SOIL.

INSTALL MATTING IN ACCORDANCE WITH SECTION 1631 OF THE STANDARD SPECIFICATIONS.

INITIALLY APPLY 3.5 OUNCES OF ANIONIC OR NEUTRALLY CHARGED POLYACRYLAMIDE (PAM) OVER WATTLE WHERE WATER WILL FLOW AND AFTER EVERY RAINFALL EVENT THAT IS EQUAL TO OR EXCEEDS 0.25 IN.



TOP VIEW

8/17/99

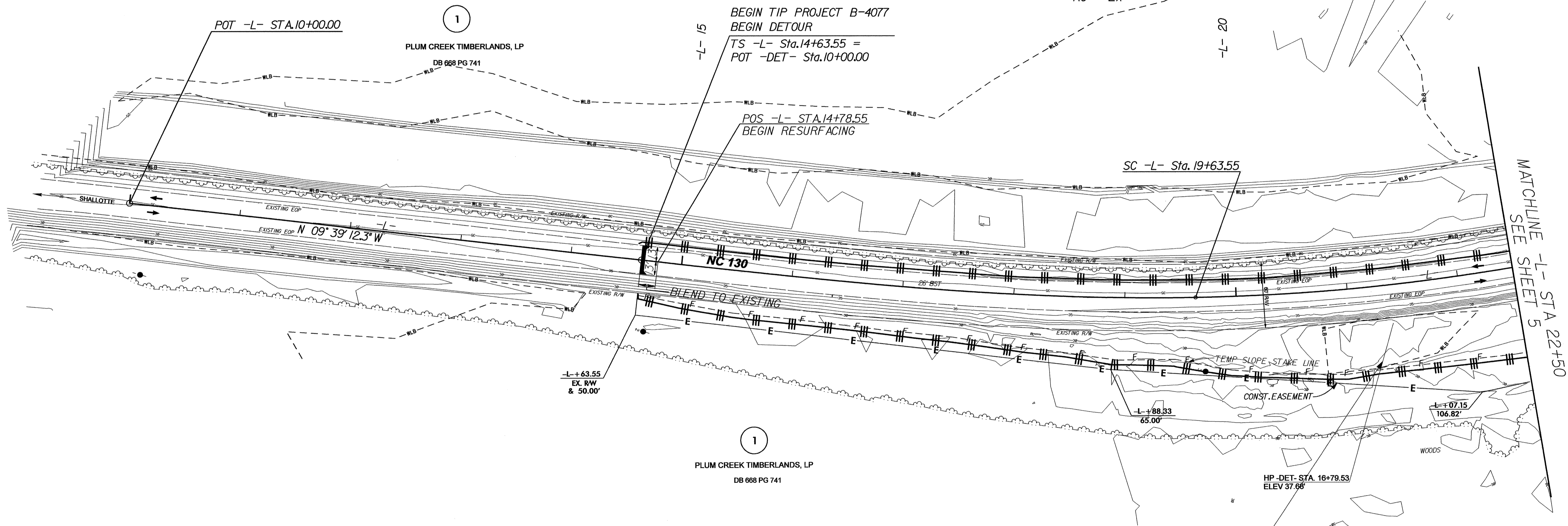
NOTE: PLACE TEMPORARY ROCK SEDIMENT DAMS TYPE - B AND TEMPORARY ROCK SILT CHECKS TYPE - A AT DRAINAGE OUTLETS.

CLEARING AND GRUBBING EROSION CONTROL FOR CONSTRUCTION SHEET 04

PROJECT REFERENCE NO. B-4077	SHEET NO. EC-04/CONST.04
RW SHEET NO.	
ROADWAY DESIGN ENGINEER	HYDRAULICS ENGINEER



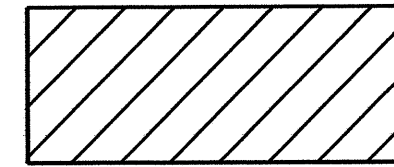
-L- SPIRAL DATA
 Pts Sta. 17+97.18
 $\theta_s = 7^\circ 27' 37.4''$
 Ls = 500.00'
 Rc = 1,920.00'
 LT = 333.63'
 ST = 166.94'
 SE = EX
 RO = EX



NOTE: PLACE FABRIC FOR SOIL STABILIZATION ON THE EXISTING GROUND IN THE AREAS OF THE WETLANDS LOCATED OUTSIDE THE LIMITS OF THE PERMANENT EMBANKMENT, BENEATH THE DETOUR FILL MATERIAL, OR AT THE DISCRETION OF THE ENGINEER.
 SEW FABRIC FOR SOIL STABILIZATION, IN ACCORDANCE WITH THE FABRIC MANUFACTURER'S RECOMMENDATIONS, ALONG THE EDGES OF THE FABRIC SUCH THAT DURING THE REMOVAL OF THE TEMPORARY DETOUR FILL MATERIAL AND FABRIC, NO FILL MATERIAL WILL REMAIN IN THE WETLANDS.

8/17/99

NOTE: UTILIZE SPECIAL STILLING BASIN AS STILLING BASIN WHERE APPLICABLE.



ENVIRONMENTALLY SENSITIVE AREA
SEE PROJECT SPECIAL PROVISIONS

NOTE: PLACE TEMPORARY ROCK SEDIMENT DAMS TYPE - B AND TEMPORARY ROCK SILT CHECKS TYPE - A AT DRAINAGE OUTLETS.

CLEARING AND GRUBBING
EROSION CONTROL FOR
CONSTRUCTION SHEET 05

PROJECT REFERENCE NO.	SHEET NO.
B-4077	EC-05/CONST.05
RW SHEET NO.	
ROADWAY DESIGN ENGINEER	HYDRAULICS ENGINEER

NAD 8395

POC -L- STA. 34+50.00
END FULL DEPTH
BEGIN WIDENING &
RESURFACING

HP -L- STA. 32+57.24
ELEV 36.12

POC -L- Sta. 32+31.71
END APPROACH SLAB

-L+ 50.00
EX. RW
& 50.00'

POC -L- Sta. 32+06.71
END BRIDGE

POC -L- Sta. 31+17.35
BEGIN BRIDGE

POC -L- Sta. 30+92.35
BEGIN APPROACH SLAB

CL "B" RIPRAP
EST. 1 TON
F.F. EST. 5 SY

LP -L- STA. 30+89.44
ELEV 35.75

15" CSP W2 ELBOWS

SHOULDER BERM GUTTER
-L- STA. 30+29.85 TO
-L- STA. 30+92.35 (LT.)

-L+ 00.00
EX. RW
& 50.00'

POC -L- STA. 28+78.47
END RESURFACING
BEGIN WIDENING &
RESURFACING

-L+ 100.00
EX. RW
& 50.00'

1
PLUM CREEK TIMBERLANDS, LP
DB 668 PG 741

-L- 25
TEMP SPECIAL DITCH
SEE DETOUR DETAIL A

WACCAMAW
RIVER
OVERFLOW

POC -L- STA. 30+70.00
END WIDENING &
RESURFACING
BEGIN FULL DEPTH

PROF GUARDRAIL
TYPICAL

HP -L- STA. 25+07.42
ELEV 38.23

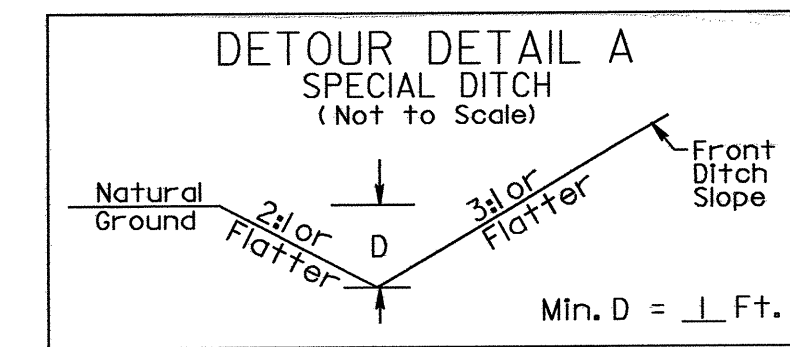
MATCHLINE -L- STA 22+50
SEE SHEET 4

NC 130

-L+ 12.75
120.00'
PLUM CREEK TIMBERLANDS, LP
DB 668 PG 741

LP -DET- STA. 20+36.16
ELEV 36.16'

EXISTING WETLAND TO BE RESTORED



-DET- STA. 19+99.19 TO 25+66.04 LT

NOTE: PLACE FABRIC FOR SOIL STABILIZATION ON THE EXISTING GROUND IN THE AREAS OF THE WETLANDS LOCATED OUTSIDE THE LIMITS OF THE PERMANENT EMBANKMENT, BENEATH THE DETOUR FILL MATERIAL, OR AT THE DISCRETION OF THE ENGINEER.
SEW FABRIC FOR SOIL STABILIZATION IN ACCORDANCE WITH THE FABRIC MANUFACTURER'S RECOMMENDATIONS, ALONG THE EDGES OF THE FABRIC SUCH THAT DURING THE REMOVAL OF THE TEMPORARY DETOUR FILL MATERIAL AND FABRIC, NO FILL MATERIAL WILL REMAIN IN THE WETLANDS.

REVISIONS

8/17/99

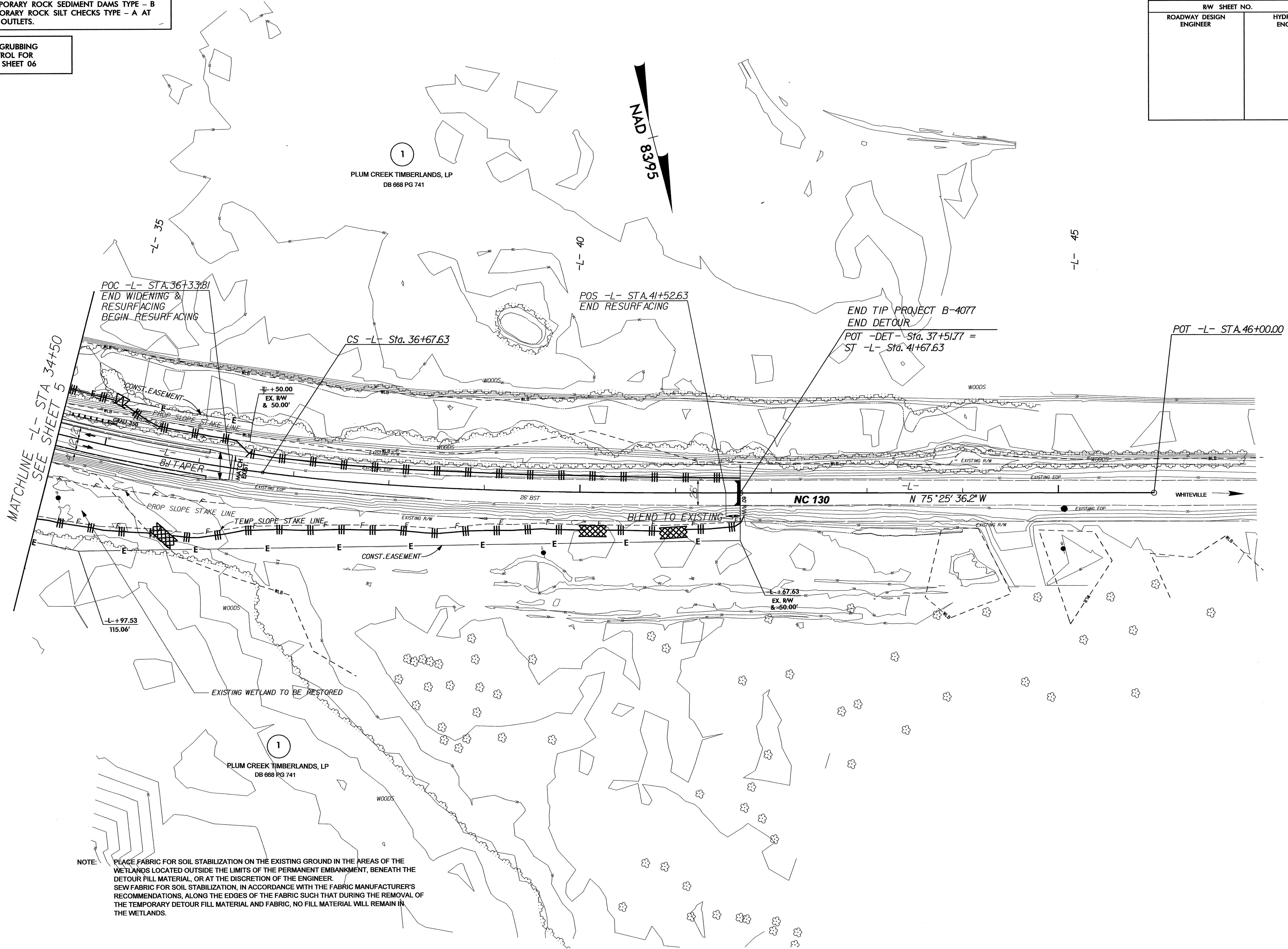
NOTE: PLACE TEMPORARY ROCK SEDIMENT DAMS TYPE - B AND TEMPORARY ROCK SILT CHECKS TYPE - A AT DRAINAGE OUTLETS.

CLEARING AND GRUBBING EROSION CONTROL FOR CONSTRUCTION SHEET 06

PROJECT REFERENCE NO. B-4077		SHEET NO. EC-06/CONST.06	
RW SHEET NO.			
ROADWAY DESIGN ENGINEER		HYDRAULICS ENGINEER	

REVISIONS

MATCHLINE -L- STA 34+50
SEE SHEET 5



NOTE: PLACE FABRIC FOR SOIL STABILIZATION ON THE EXISTING GROUND IN THE AREAS OF THE WETLANDS LOCATED OUTSIDE THE LIMITS OF THE PERMANENT EMBANKMENT, BENEATH THE DETOUR FILL MATERIAL, OR AT THE DISCRETION OF THE ENGINEER. SEW FABRIC FOR SOIL STABILIZATION, IN ACCORDANCE WITH THE FABRIC MANUFACTURER'S RECOMMENDATIONS, ALONG THE EDGES OF THE FABRIC SUCH THAT DURING THE REMOVAL OF THE TEMPORARY DETOUR FILL MATERIAL AND FABRIC, NO FILL MATERIAL WILL REMAIN IN THE WETLANDS.

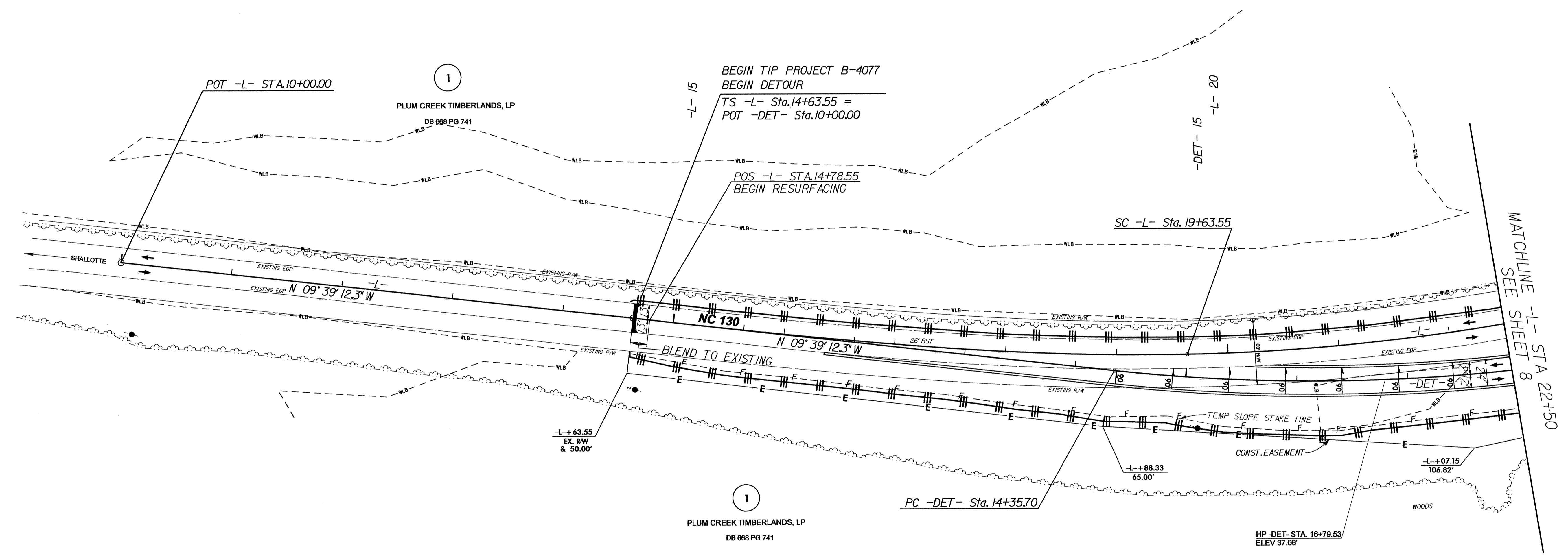
8/17/99

PROJECT REFERENCE NO.		SHEET NO.	
B-4077		EC-07/CONST.04	
RW SHEET NO.			
ROADWAY DESIGN ENGINEER		HYDRAULICS ENGINEER	

DETOUR



REVISIONS



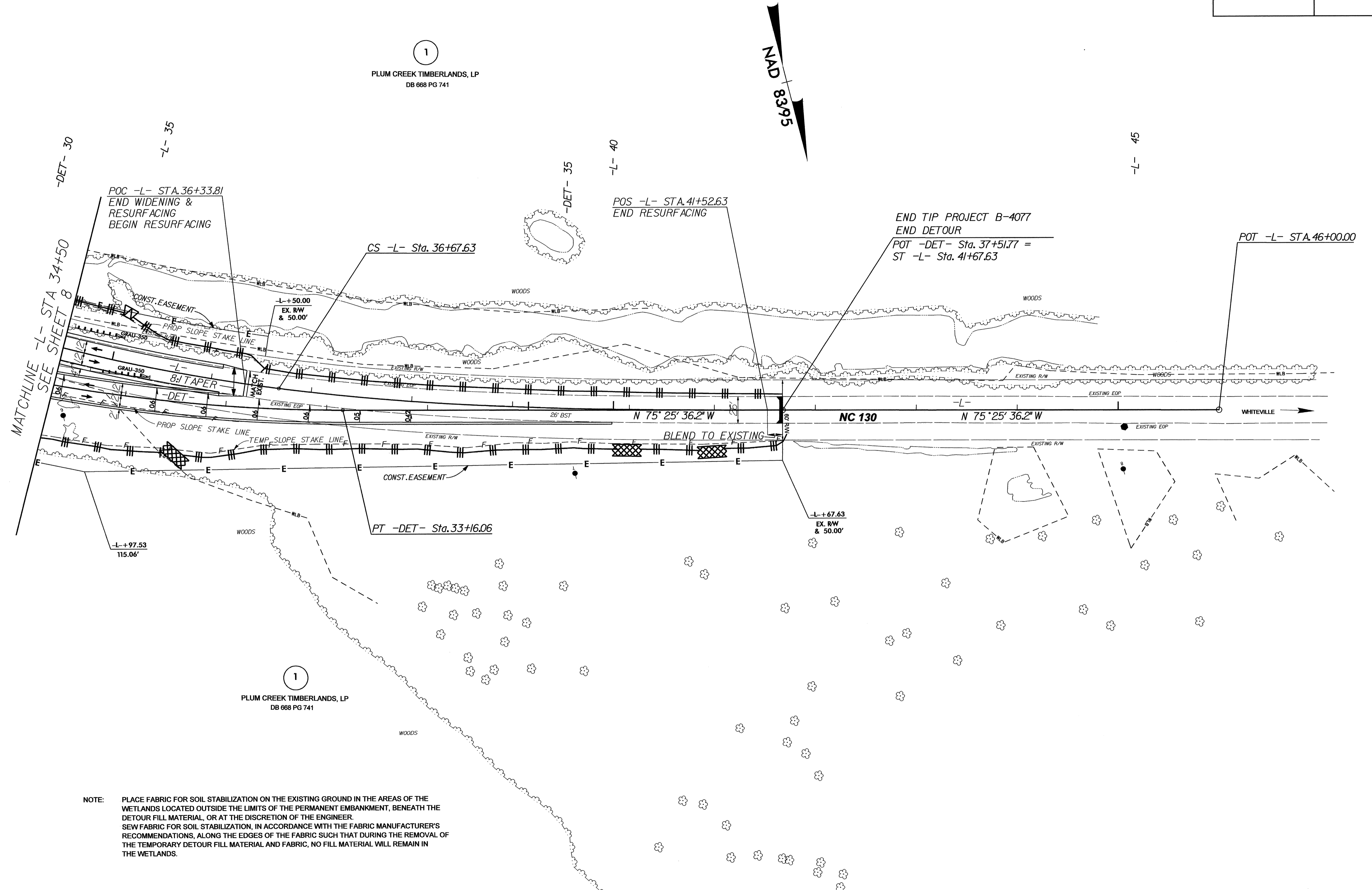
NOTE: PLACE FABRIC FOR SOIL STABILIZATION ON THE EXISTING GROUND IN THE AREAS OF THE WETLANDS LOCATED OUTSIDE THE LIMITS OF THE PERMANENT EMBANKMENT, BENEATH THE DETOUR FILL MATERIAL, OR AT THE DISCRETION OF THE ENGINEER.
SEW FABRIC FOR SOIL STABILIZATION, IN ACCORDANCE WITH THE FABRIC MANUFACTURER'S RECOMMENDATIONS, ALONG THE EDGES OF THE FABRIC SUCH THAT DURING THE REMOVAL OF THE TEMPORARY DETOUR FILL MATERIAL AND FABRIC, NO FILL MATERIAL WILL REMAIN IN THE WETLANDS.

8/17/99

DETOUR

PROJECT REFERENCE NO. B-4077	SHEET NO. EC-09/CONST.06
RW SHEET NO.	
ROADWAY DESIGN ENGINEER	HYDRAULICS ENGINEER

REVISIONS



1
PLUM CREEK TIMBERLANDS, LP
DB 668 PG 741

1
PLUM CREEK TIMBERLANDS, LP
DB 668 PG 741

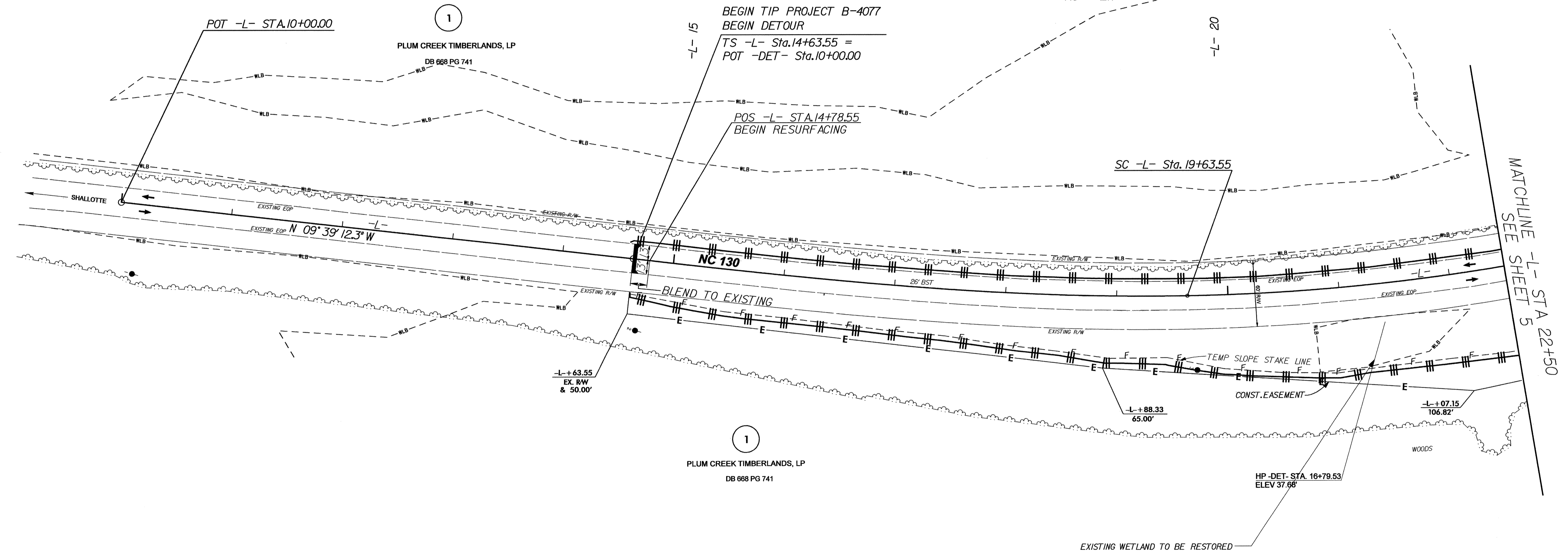
NOTE: PLACE FABRIC FOR SOIL STABILIZATION ON THE EXISTING GROUND IN THE AREAS OF THE WETLANDS LOCATED OUTSIDE THE LIMITS OF THE PERMANENT EMBANKMENT, BENEATH THE DETOUR FILL MATERIAL, OR AT THE DISCRETION OF THE ENGINEER.
SEW FABRIC FOR SOIL STABILIZATION, IN ACCORDANCE WITH THE FABRIC MANUFACTURER'S RECOMMENDATIONS, ALONG THE EDGES OF THE FABRIC SUCH THAT DURING THE REMOVAL OF THE TEMPORARY DETOUR FILL MATERIAL AND FABRIC, NO FILL MATERIAL WILL REMAIN IN THE WETLANDS.

8/17/99

PROJECT REFERENCE NO. B-4077	SHEET NO. EC-10/CONST.04
RW SHEET NO.	
ROADWAY DESIGN ENGINEER	HYDRAULICS ENGINEER



-L- SPIRAL DATA
 Pls Sta. 17+97.18
 $\theta_s = 7^\circ 27' 37.4''$
 $L_s = 500.00'$
 $R_c = 1,920.00'$
 $LT = 333.63'$
 $ST = 166.94'$
 $SE = EX$
 $RO = EX$

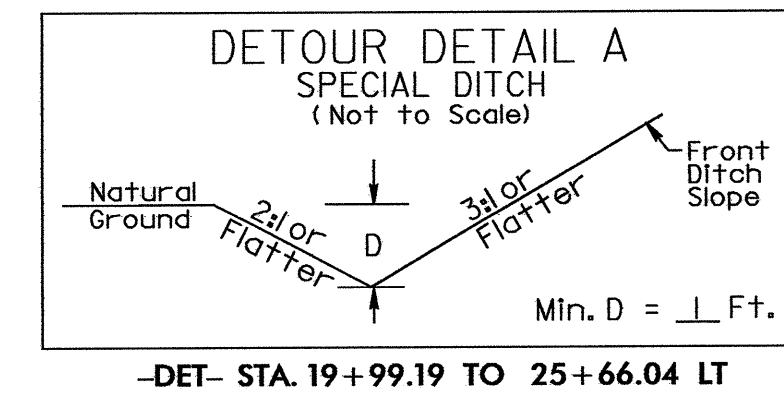
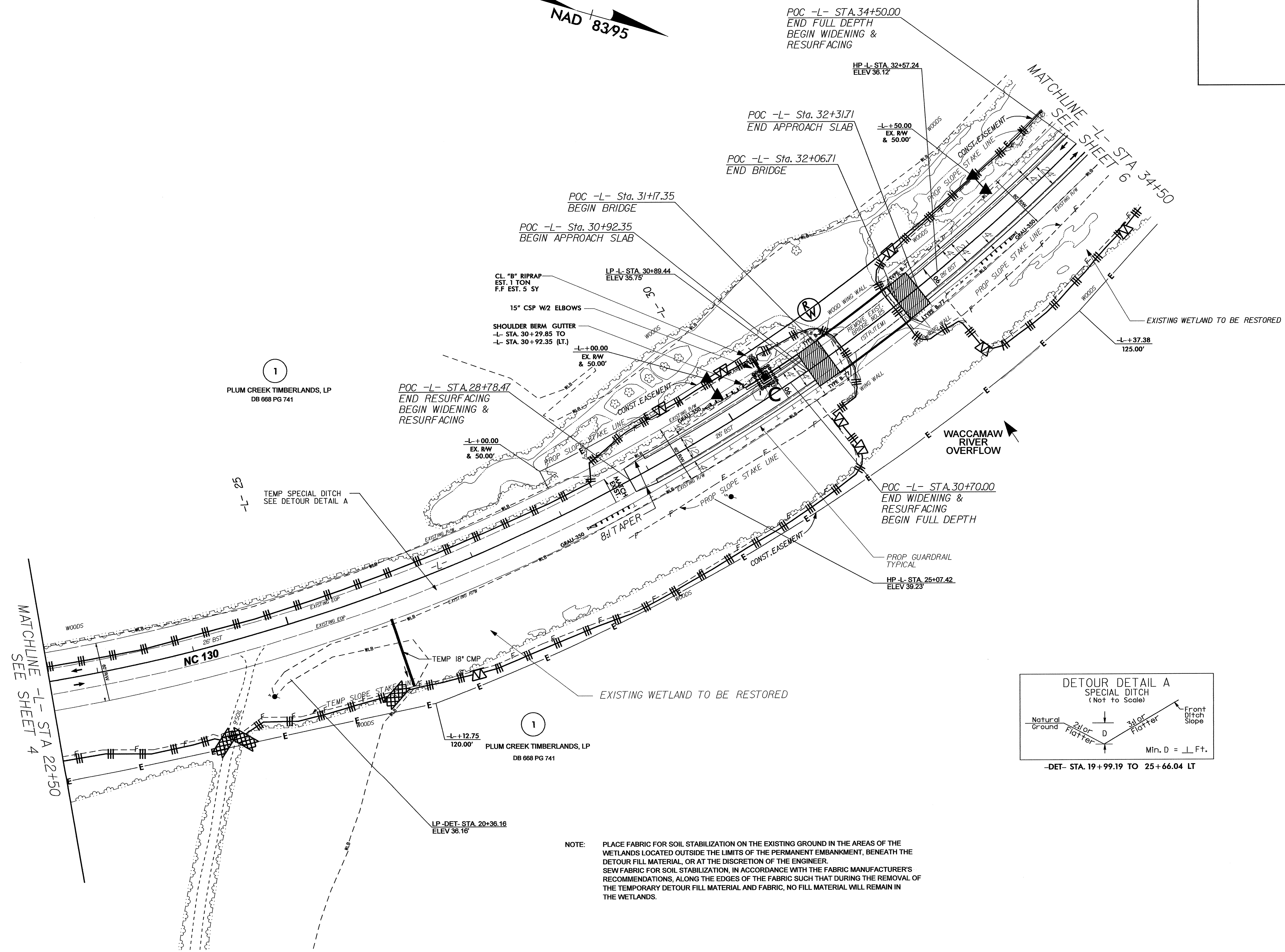


REVISIONS

NOTE: PLACE FABRIC FOR SOIL STABILIZATION ON THE EXISTING GROUND IN THE AREAS OF THE WETLANDS LOCATED OUTSIDE THE LIMITS OF THE PERMANENT EMBANKMENT, BENEATH THE DETOUR FILL MATERIAL, OR AT THE DISCRETION OF THE ENGINEER. SEW FABRIC FOR SOIL STABILIZATION, IN ACCORDANCE WITH THE FABRIC MANUFACTURER'S RECOMMENDATIONS, ALONG THE EDGES OF THE FABRIC SUCH THAT DURING THE REMOVAL OF THE TEMPORARY DETOUR FILL MATERIAL AND FABRIC, NO FILL MATERIAL WILL REMAIN IN THE WETLANDS.

PROJECT REFERENCE NO.		SHEET NO.	
B-4077		EC-II/CONST.05	
RW SHEET NO.			
ROADWAY DESIGN ENGINEER		HYDRAULICS ENGINEER	

NOTE: UTILIZE SPECIAL STILLING BASIN AS STILLING BASIN WHERE APPLICABLE.



NOTE: PLACE FABRIC FOR SOIL STABILIZATION ON THE EXISTING GROUND IN THE AREAS OF THE WETLANDS LOCATED OUTSIDE THE LIMITS OF THE PERMANENT EMBANKMENT, BENEATH THE DETOUR FILL MATERIAL, OR AT THE DISCRETION OF THE ENGINEER. SEW FABRIC FOR SOIL STABILIZATION, IN ACCORDANCE WITH THE FABRIC MANUFACTURER'S RECOMMENDATIONS, ALONG THE EDGES OF THE FABRIC SUCH THAT DURING THE REMOVAL OF THE TEMPORARY DETOUR FILL MATERIAL AND FABRIC, NO FILL MATERIAL WILL REMAIN IN THE WETLANDS.

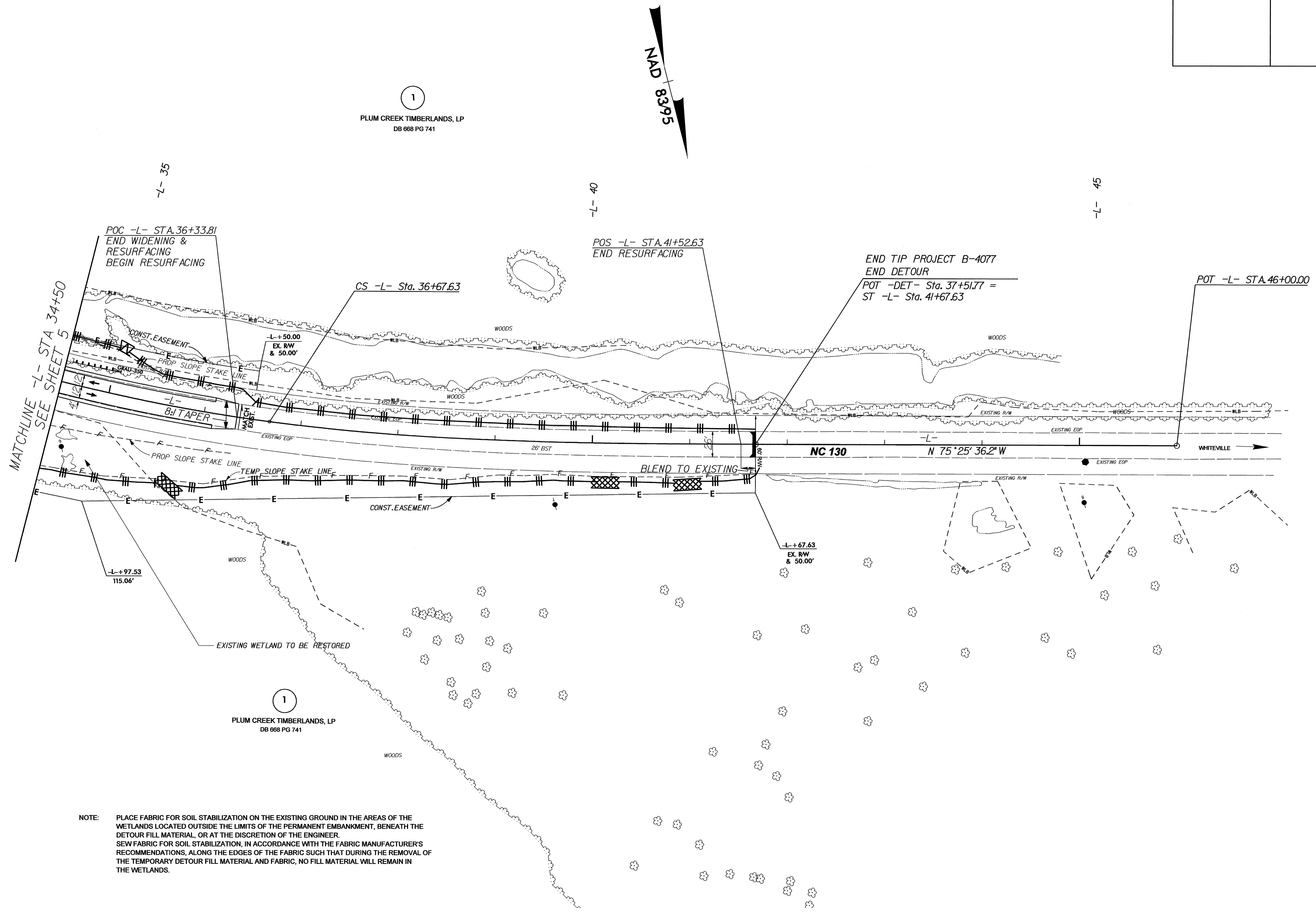
REVISIONS

8/17/99

PROJECT REFERENCE NO. B-4077	SHEET NO. EC-12/CONST.06
RW SHEET NO.	
ROADWAY DESIGN ENGINEER	HYDRAULICS ENGINEER

8/17/99

REVISIONS



NOTE: PLACE FABRIC FOR SOIL STABILIZATION ON THE EXISTING GROUND IN THE AREAS OF THE WETLANDS LOCATED OUTSIDE THE LIMITS OF THE PERMANENT EMBANKMENT, BENEATH THE DETOUR FILL MATERIAL, OR AT THE DISCRETION OF THE ENGINEER.
SEW FABRIC FOR SOIL STABILIZATION, IN ACCORDANCE WITH THE FABRIC MANUFACTURER'S RECOMMENDATIONS, ALONG THE EDGES OF THE FABRIC SUCH THAT DURING THE REMOVAL OF THE TEMPORARY DETOUR FILL MATERIAL AND FABRIC, NO FILL MATERIAL WILL REMAIN IN THE WETLANDS.