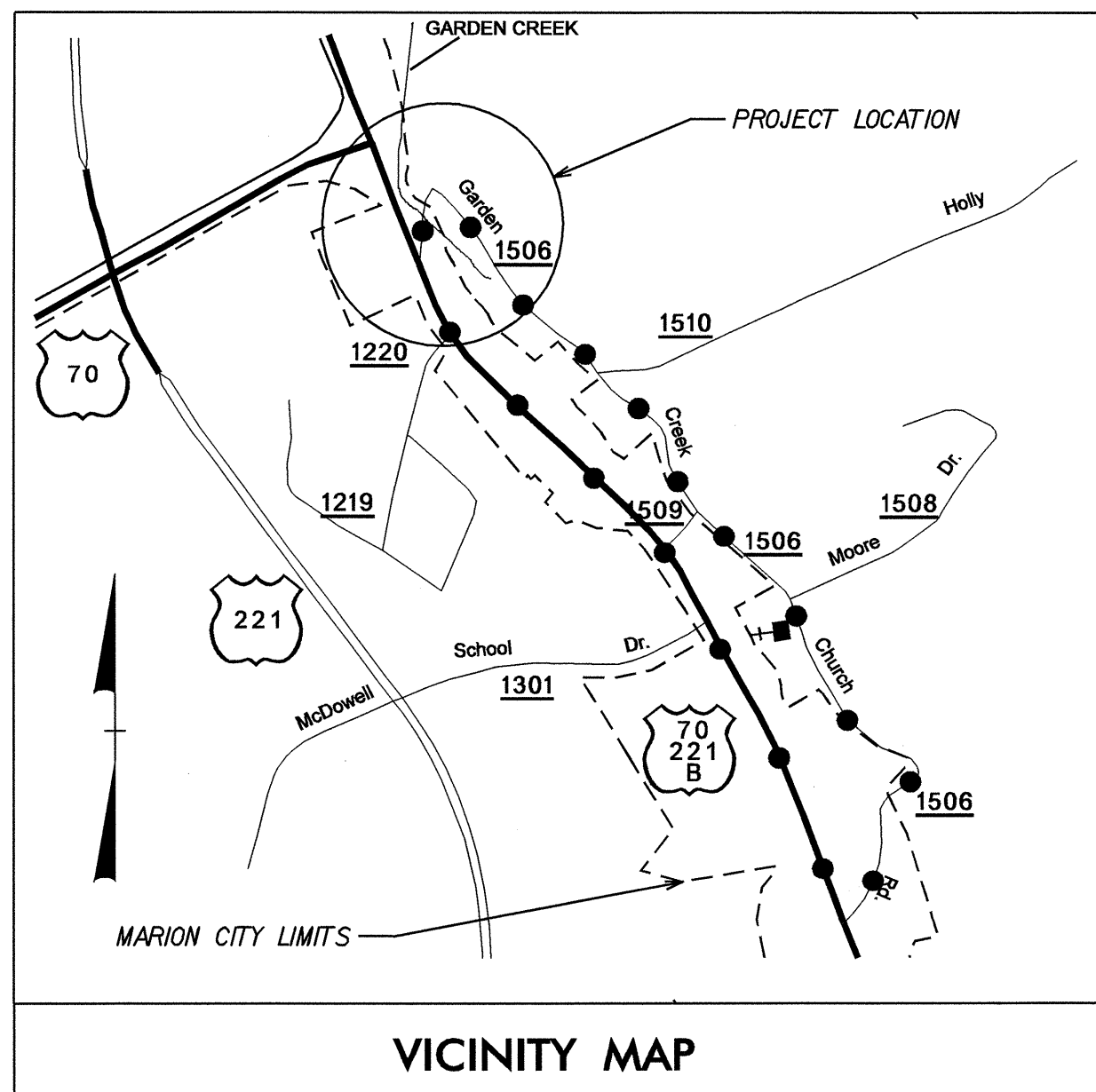


09/08/99

See Sheet 1-A For Index of Sheets

T.I.P. NO.	SHEET NO.
B-4196	UO-1

TIP PROJECT: B-4196



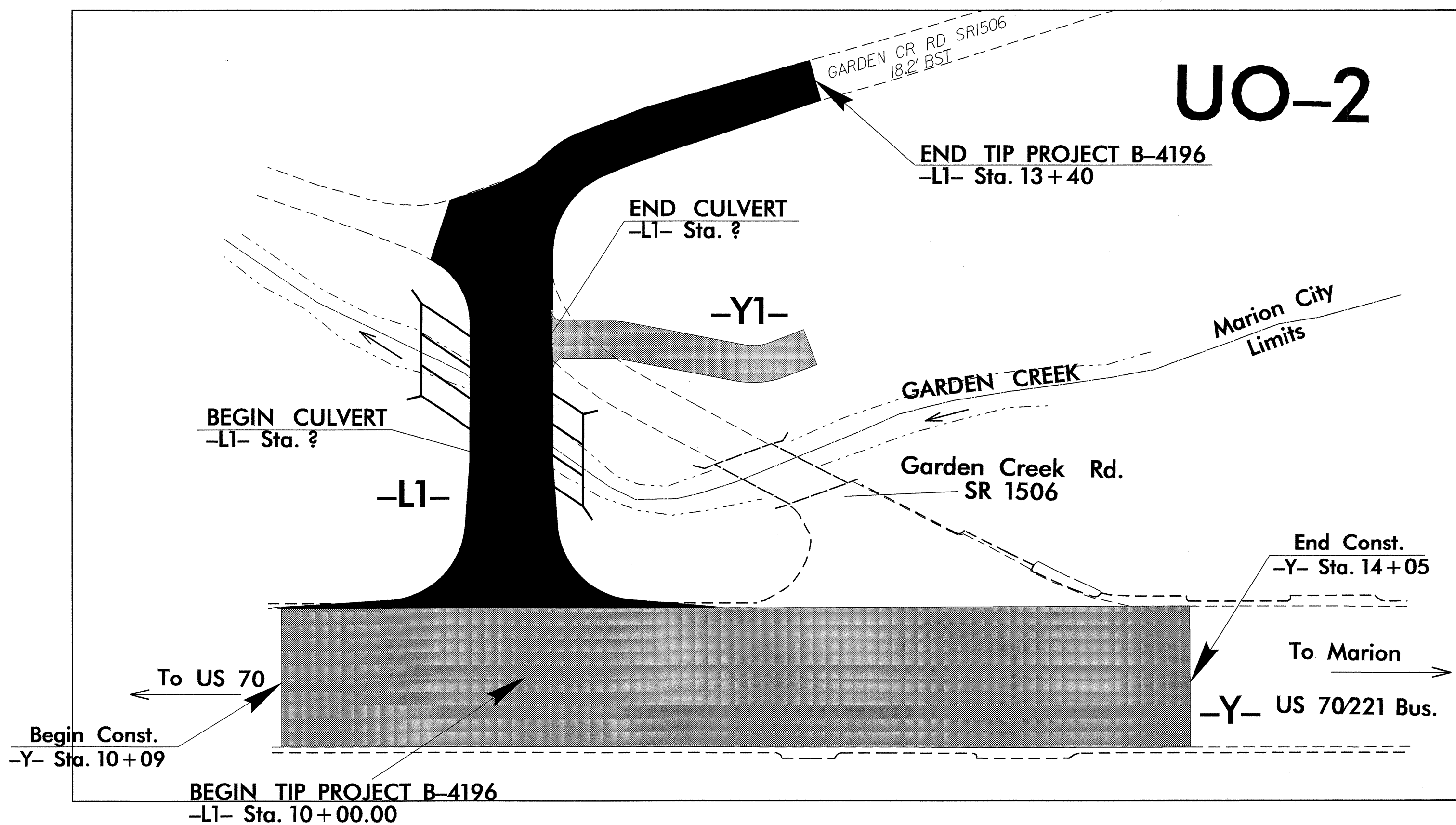
OFF SITE DETOUR ROUTE

STATE OF NORTH CAROLINA
DIVISION OF HIGHWAYS

UTILITY BY OTHERS PLANS
McDOWELL COUNTY

LOCATION: BRIDGE No. 238 OVER GARDEN CREEK ON SR 1506
GARDEN CREEK ROAD IN MARION

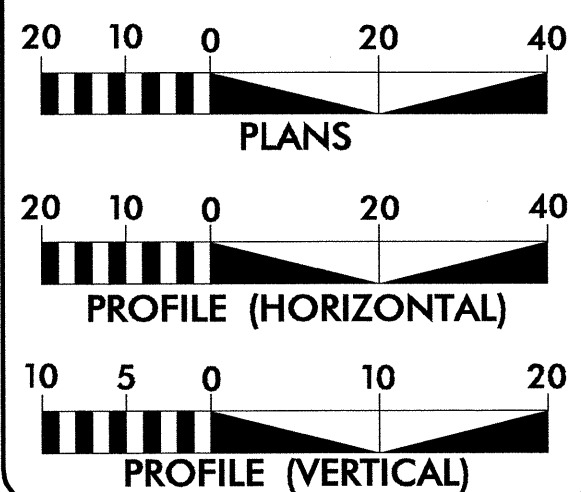
TYPE OF WORK: UTILITY BY OTHERS



2006 STANDARD SPECIFICATIONS

Project is partially within the city limits of Marion

GRAPHIC SCALES



SHEET NO.

UO-1

UO-2

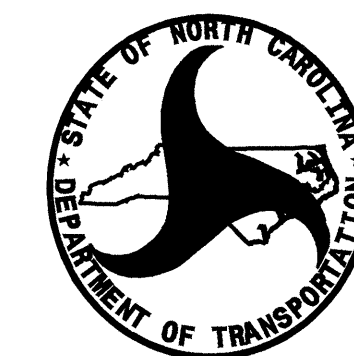
INDEX OF SHEETS

DESCRIPTION

TITLE SHEET
UTILITY BY OTHERS PLAN SHEET

UTILITY OWNERS ON PROJECT

- (1) POWER DISTRIBUTION - DUKE POWER
- (2) FIBER OPTIC - A T & T OF NORTH CAROLINA
- (3) TELEPHONE - VERIZON



PREPARED IN THE OFFICE OF:
DIVISION OF HIGHWAYS
PROJECT SERVICES
UTILITY SECTION

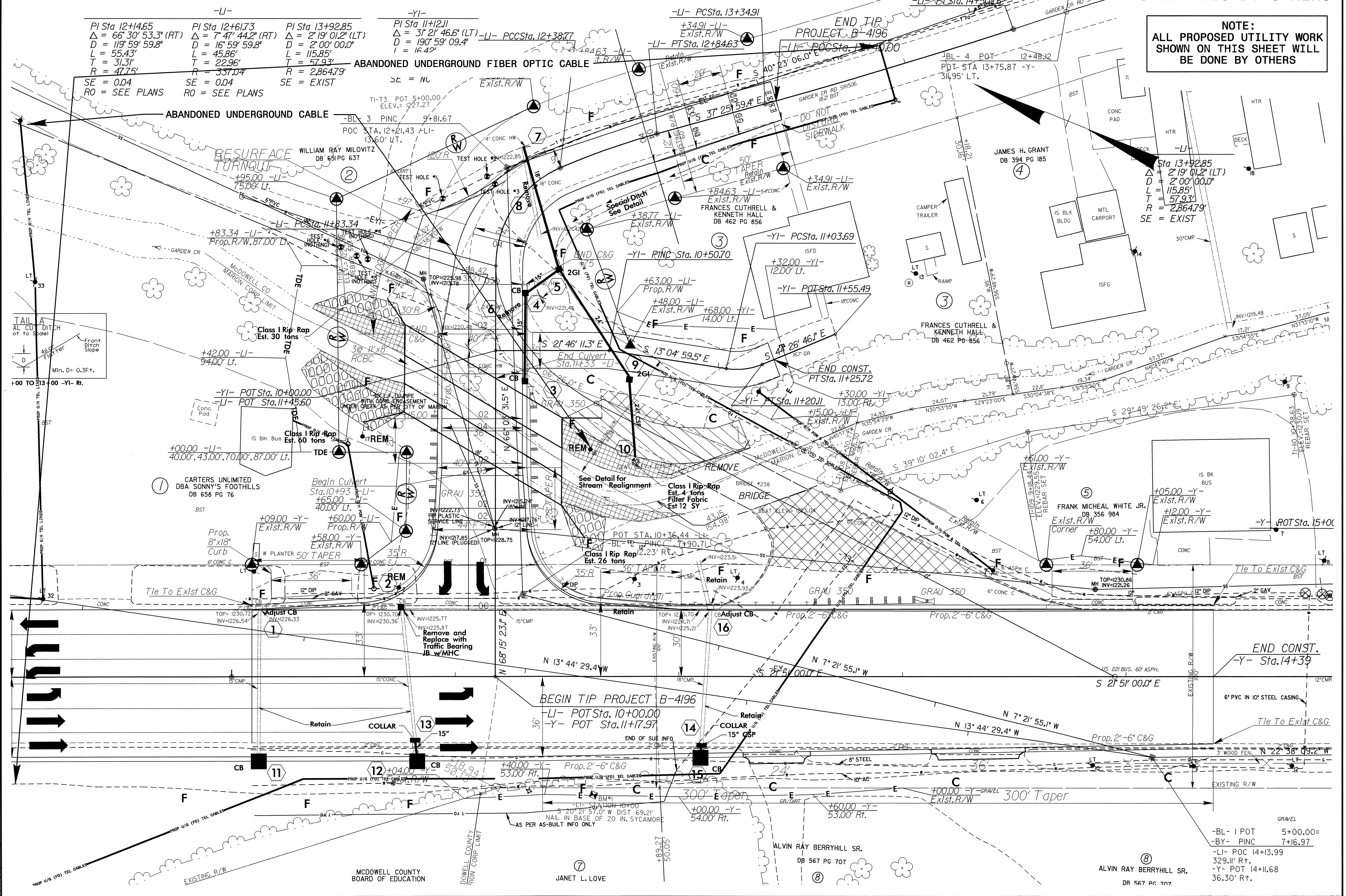
1591 MAIL SERVICES CENTER
RALEIGH NC 27699-1591
PHONE (919) 250-4128
FAX (919) 250-4119

Roger Worthington, P.E. UTILITIES SECTION ENGINEER
R. B. Wilkins, P.E. UTILITIES SQUAD LEADER PROJECT ENGINEER
John A. Nigro, P.E. UTILITIES PROJECT DESIGNER

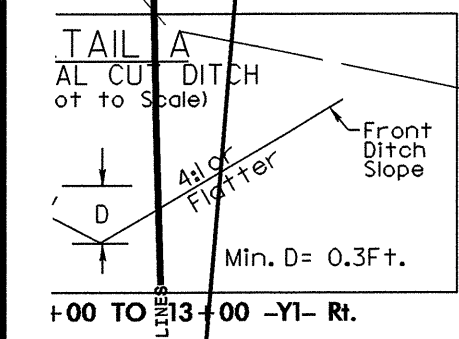
28-APR-2008 14:58
C:\utilities\rdy\ut\proj\b4196_ut_title.uol_psh.dgn
\$\$\$\$\$USERNAME\$\$\$\$\$

UTILITIES BY OTHERS

NOTE:
ALL PROPOSED UTILITY WORK
SHOWN ON THIS SHEET WILL
BE DONE BY OTHERS



-LI-	-YI-	-LI-	-YI-
PI Sta 12+14.65	PI Sta 12+61.73	PI Sta 13+92.85	PI Sta 11+12.11
$\Delta = 66^\circ 30' 53.3" (RT)$	$\Delta = 7^\circ 47' 44.2" (RT)$	$\Delta = 2^\circ 19' 01.2" (LT)$	$\Delta = 3^\circ 21' 46.6" (LT)$
$D = 119^\circ 59' 59.8"$	$D = 16^\circ 59' 59.8"$	$D = 2^\circ 00' 00.0"$	$D = 190^\circ 59' 09.4"$
$L = 55.43'$	$L = 45.86'$	$L = 115.85'$	$L = 16.42'$
$T = 31.31'$	$T = 22.96'$	$T = 57.93'$	$T = 16.42'$
$R = 47.75'$	$R = 537.04'$	$R = 2,864.79'$	$R = 16.42'$
SE = 0.04	SE = 0.04	SE = EXIST	SE = NC
RO = SEE PLANS	RO = SEE PLANS		

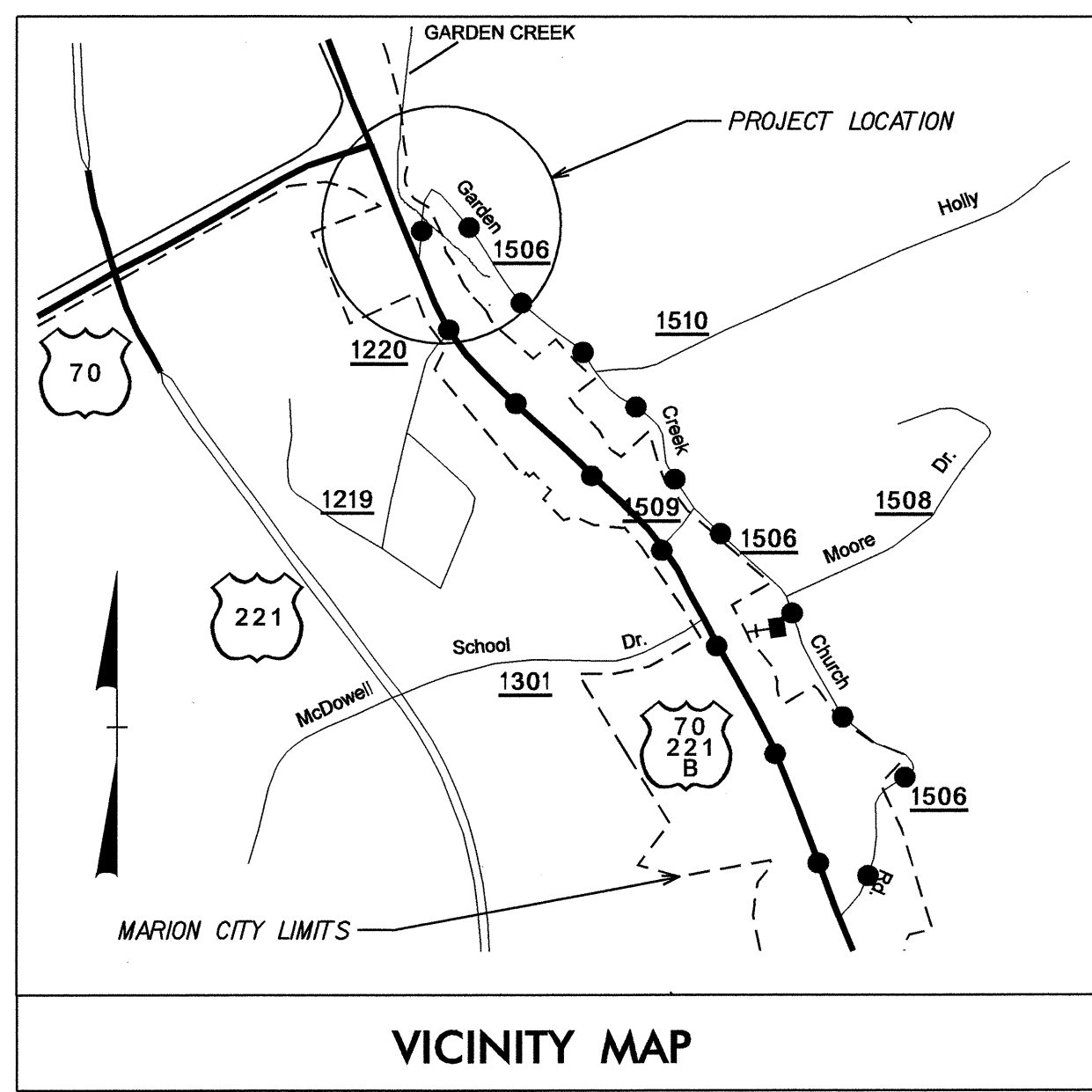


28-APR-2008 14:57
r:\utilities\cdu\proj\4196\ut-4-u02-psd.dgn
3/13/08 10:58:53 AM

-BL- I POT	5+00.00=
-BY- PINC	7+16.97
-LI- POC 14+13.99	329.11' Rt.
-Y- POT 14+11.68	36.30' Rt.

T.I.P. NO.	SHEET NO.
B-4196	UC-1

See Sheet 1-A For Index of Sheets



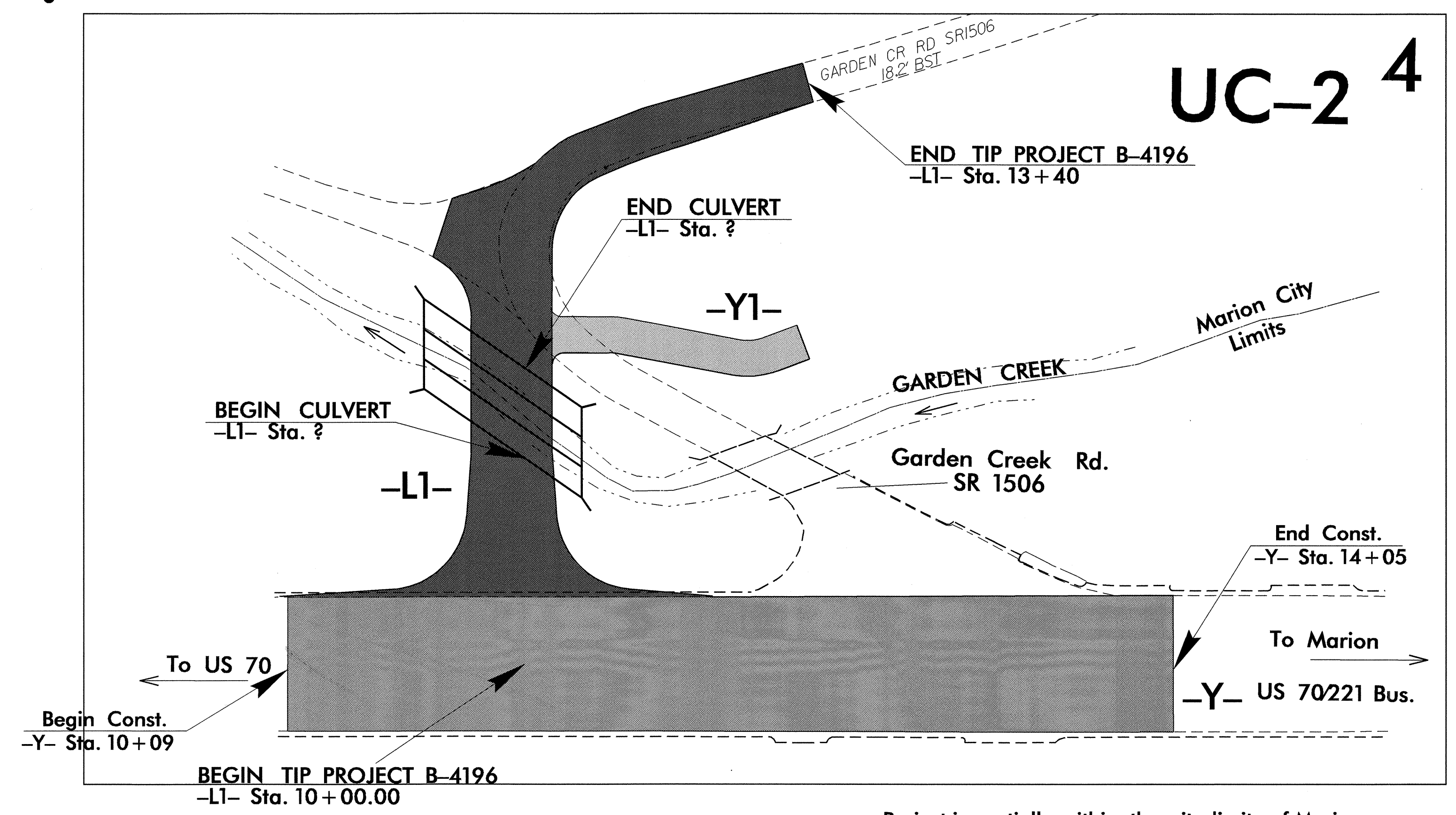
OFF SITE DETOUR ROUTE

STATE OF NORTH CAROLINA
DIVISION OF HIGHWAYS

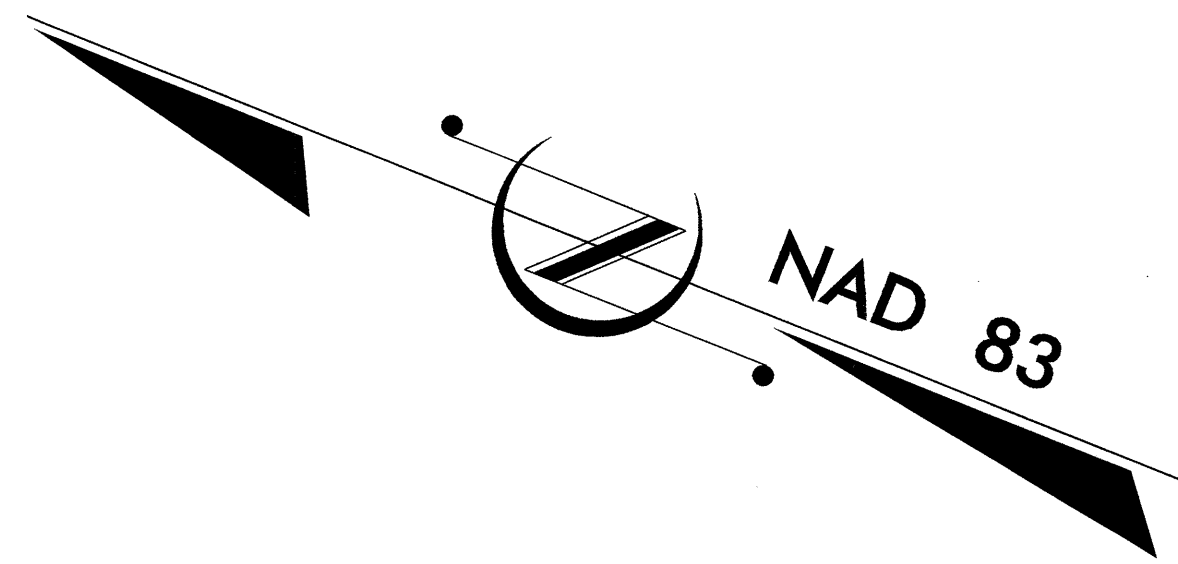
UTILITY CONSTRUCTION PLANS
McDOWELL COUNTY

LOCATION: BRIDGE No. 238 OVER GARDEN CREEK ON SR 1506
GARDEN CREEK ROAD IN MARION

TYPE OF WORK: SANITARY SEWER



UC-2 4

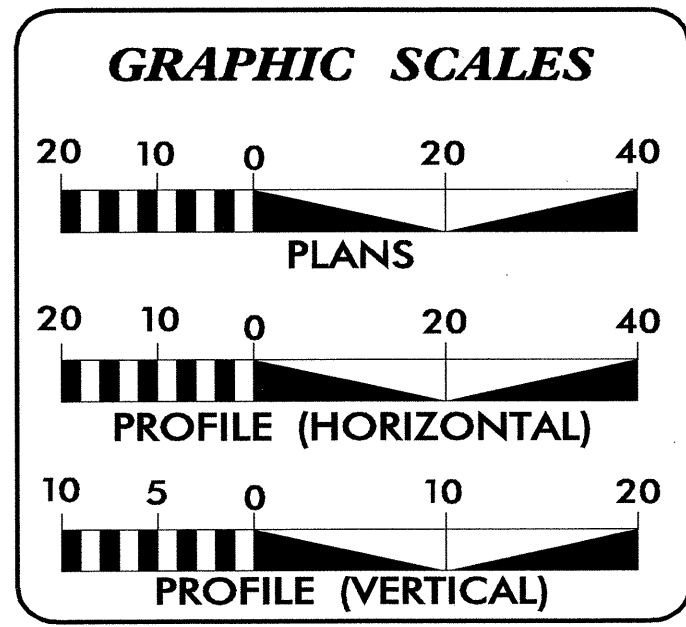


2006 STANDARD SPECIFICATIONS

Project is partially within the city limits of Marion

TIP PROJECT: B-4196

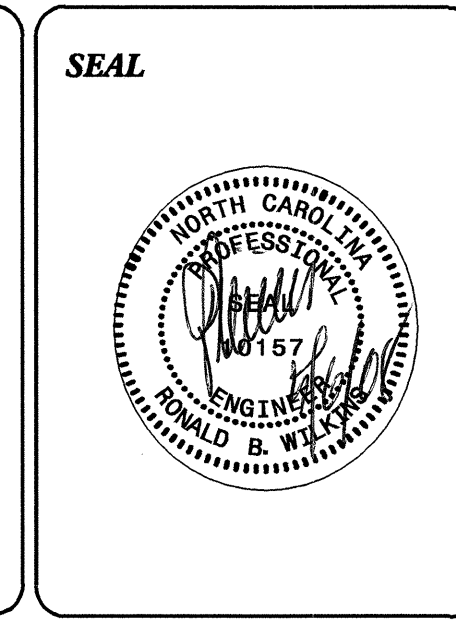
CONTRACT: C201895



SHEET NO.	DESCRIPTION
UC-1	TITLE SHEET
UC-2	UTILITY CONSTRUCTION PLAN SHEET
UC-3	PROFILE AND DETAIL SHEET

WATER AND SEWER OWNER ON PROJECT

(1) WATER CITY OF MARION
(2) SANITARY SEWER CITY OF MARION

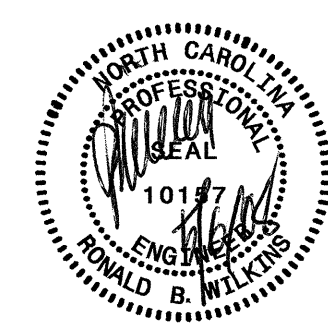


PREPARED IN THE OFFICE OF:
DIVISION OF HIGHWAYS
PROJECT SERVICES
UTILITY SECTION

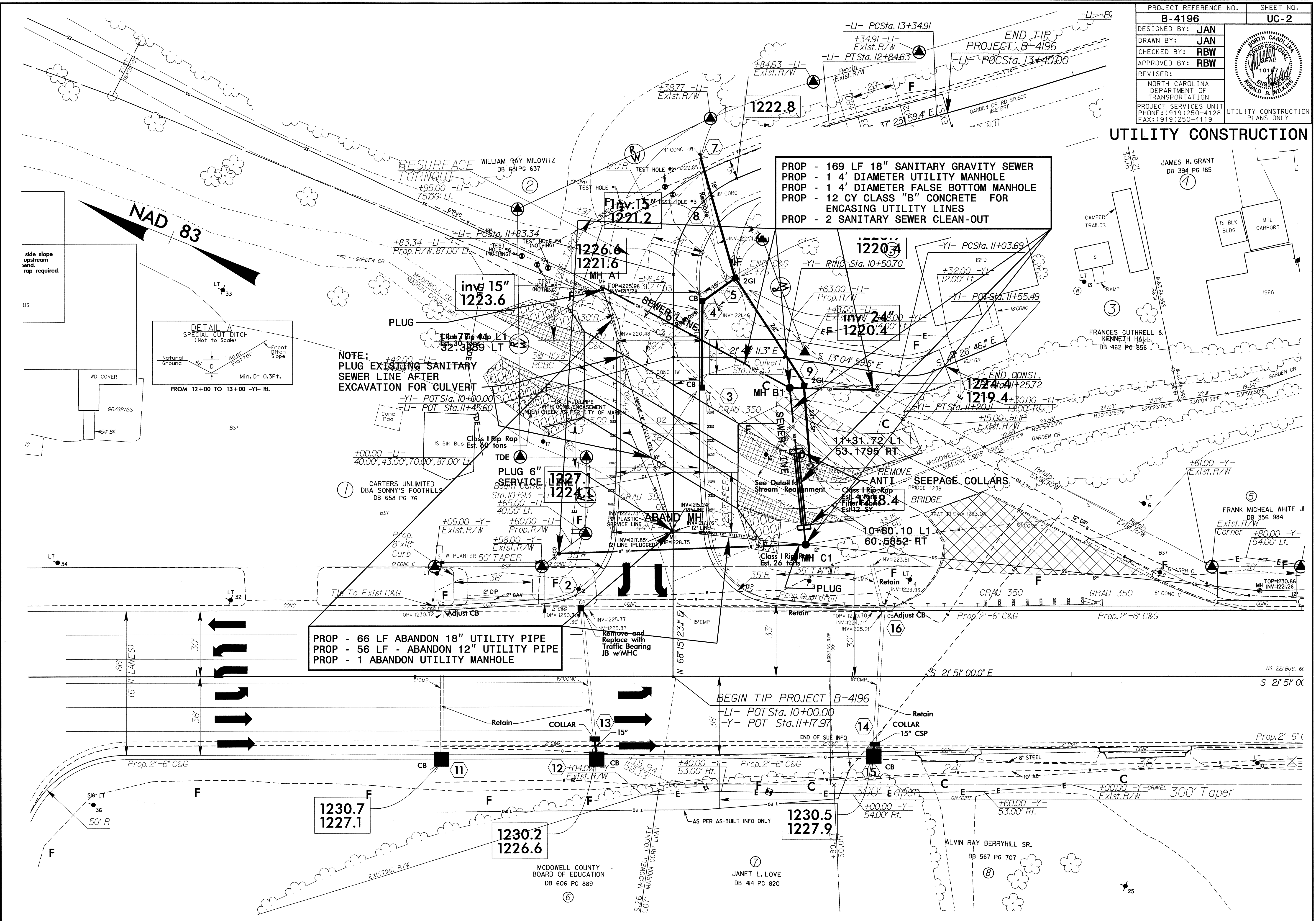
1591 MAIL SERVICES CENTER
RALEIGH, NC 27699-1591
PHONE (919) 250-4128
FAX (919) 250-4119

Roger Worthington, P.E. UTILITIES SECTION ENGINEER
R. B. Wilkins, P.E. UTILITIES SQUAD LEADER PROJECT ENGINEER
John A. Nigro, P.E. UTILITIES PROJECT DESIGNER

28-APR-2008 13:09 F:\Utilities\Yrdy\ut\prj\B4196\ut_title_uc1psh.dgn \$\$\$USERNAME\$\$\$

PROJECT REFERENCE NO.	SHEET NO.
B-4196	UC-2
DESIGNED BY: JAN	
DRAWN BY: JAN	
CHECKED BY: RBW	
APPROVED BY: RBW	
REVISID:	
NORTH CAROLINA DEPARTMENT OF TRANSPORTATION	
PROJECT SERVICES UNIT PHONE: (919)250-4128 FAX: (919)250-4119	
UTILITY CONSTRUCTION PLANS ONLY	

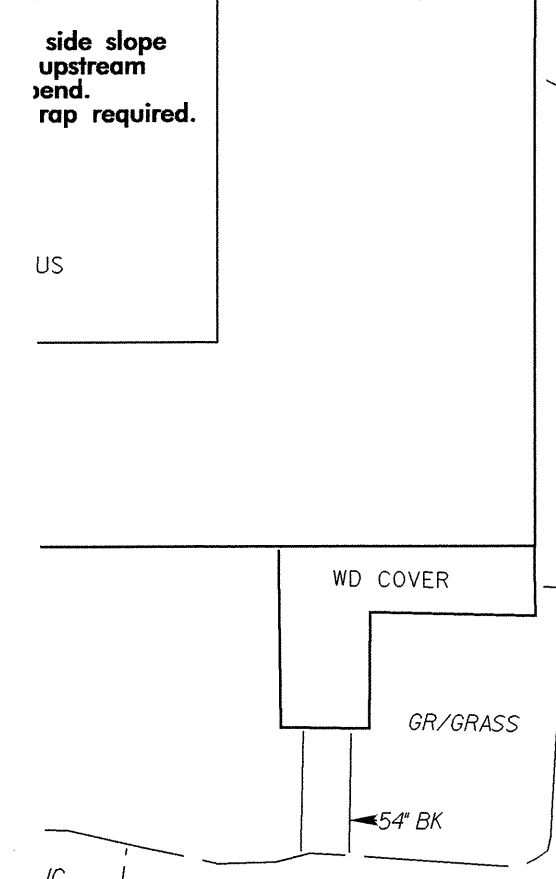
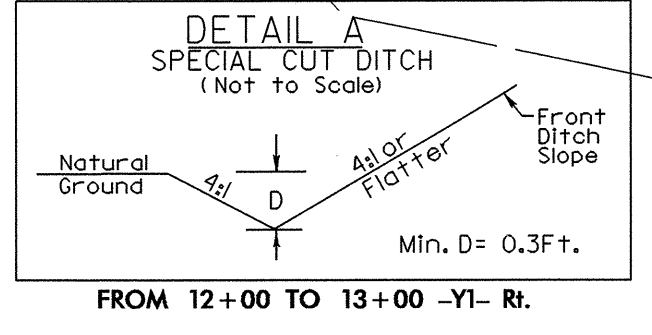
UTILITY CONSTRUCTION



PROP - 169 LF 18" SANITARY GRAVITY SEWER
 PROP - 1 4' DIAMETER UTILITY MANHOLE
 PROP - 1 4' DIAMETER FALSE BOTTOM MANHOLE
 PROP - 12 CY CLASS "B" CONCRETE FOR ENCASING UTILITY LINES
 PROP - 2 SANITARY SEWER CLEAN-OUT

NOTE:
 PLUG EXISTING SANITARY SEWER LINE AFTER EXCAVATION FOR CULVERT

PROP - 66 LF ABANDON 18" UTILITY PIPE
 PROP - 56 LF - ABANDON 12" UTILITY PIPE
 PROP - 1 ABANDON UTILITY MANHOLE

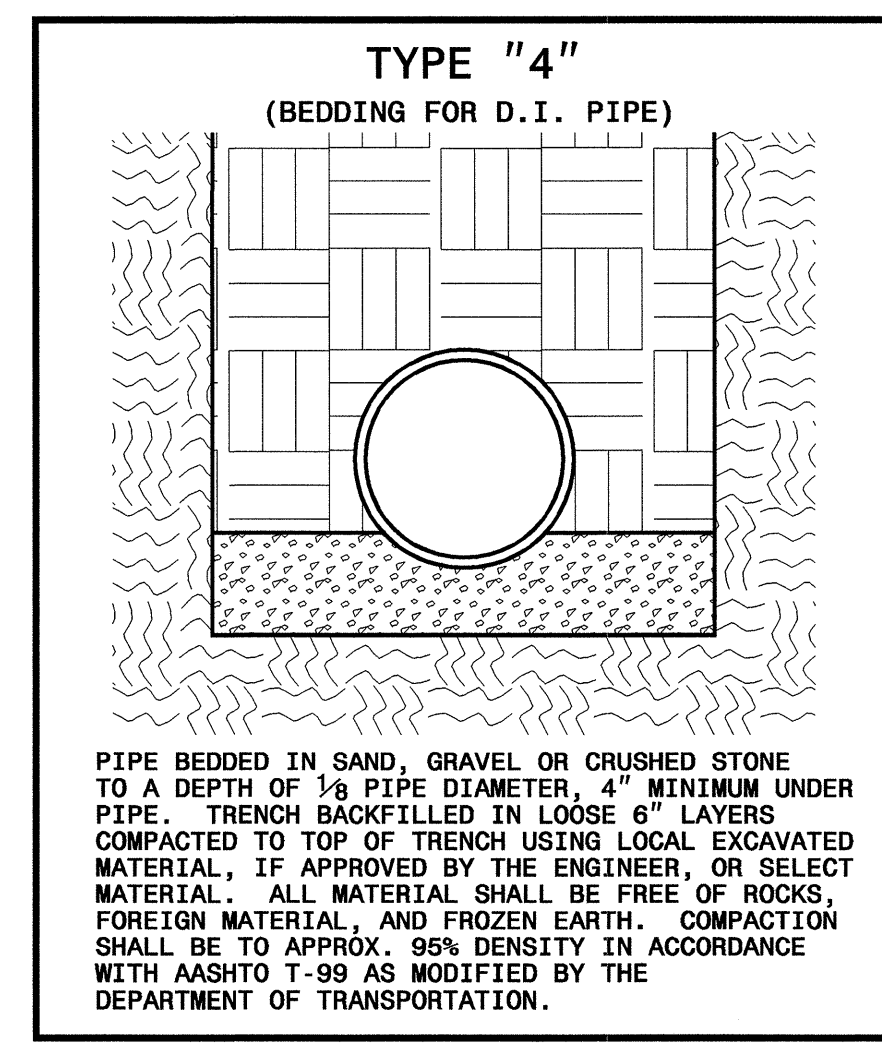
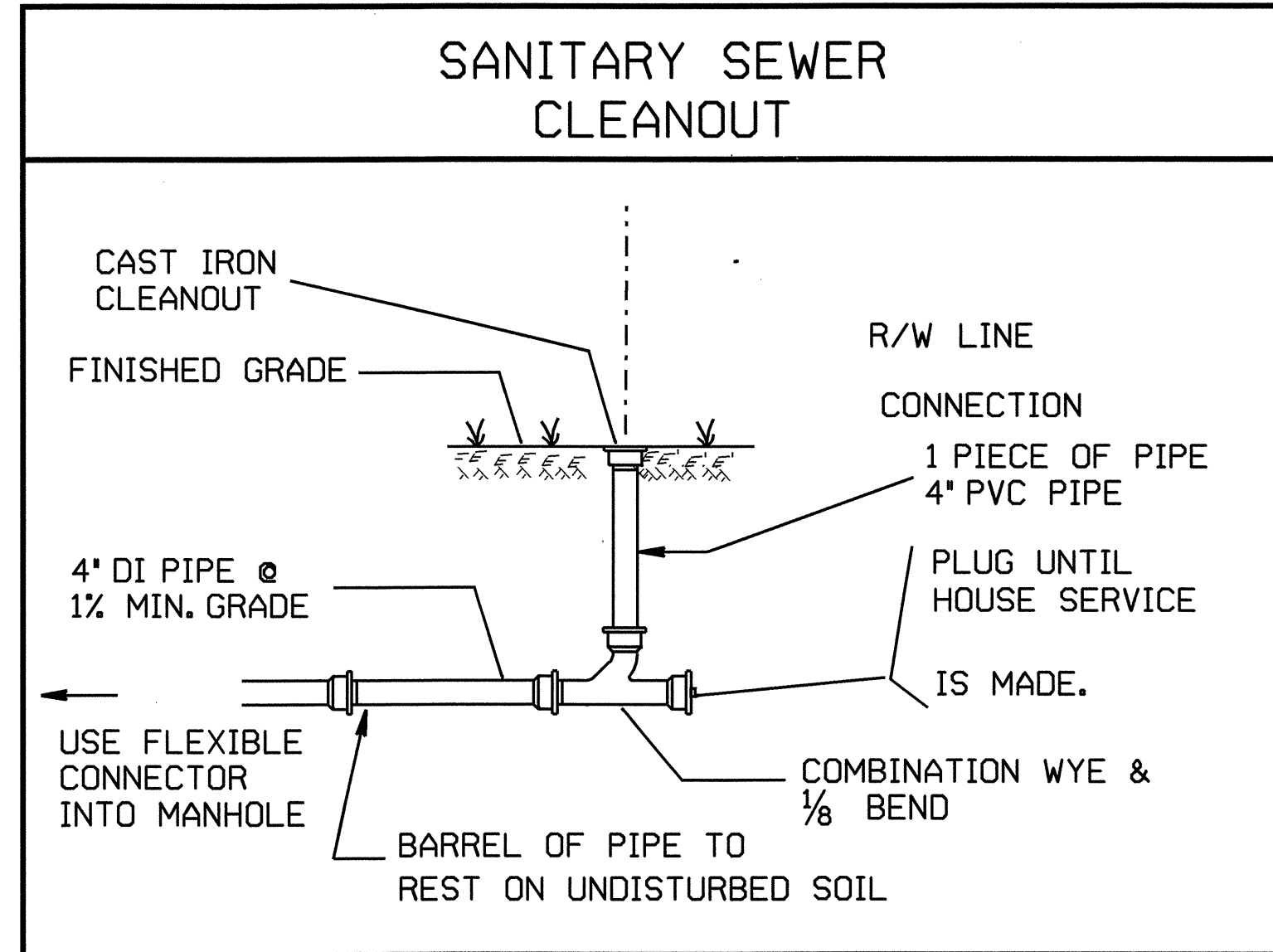
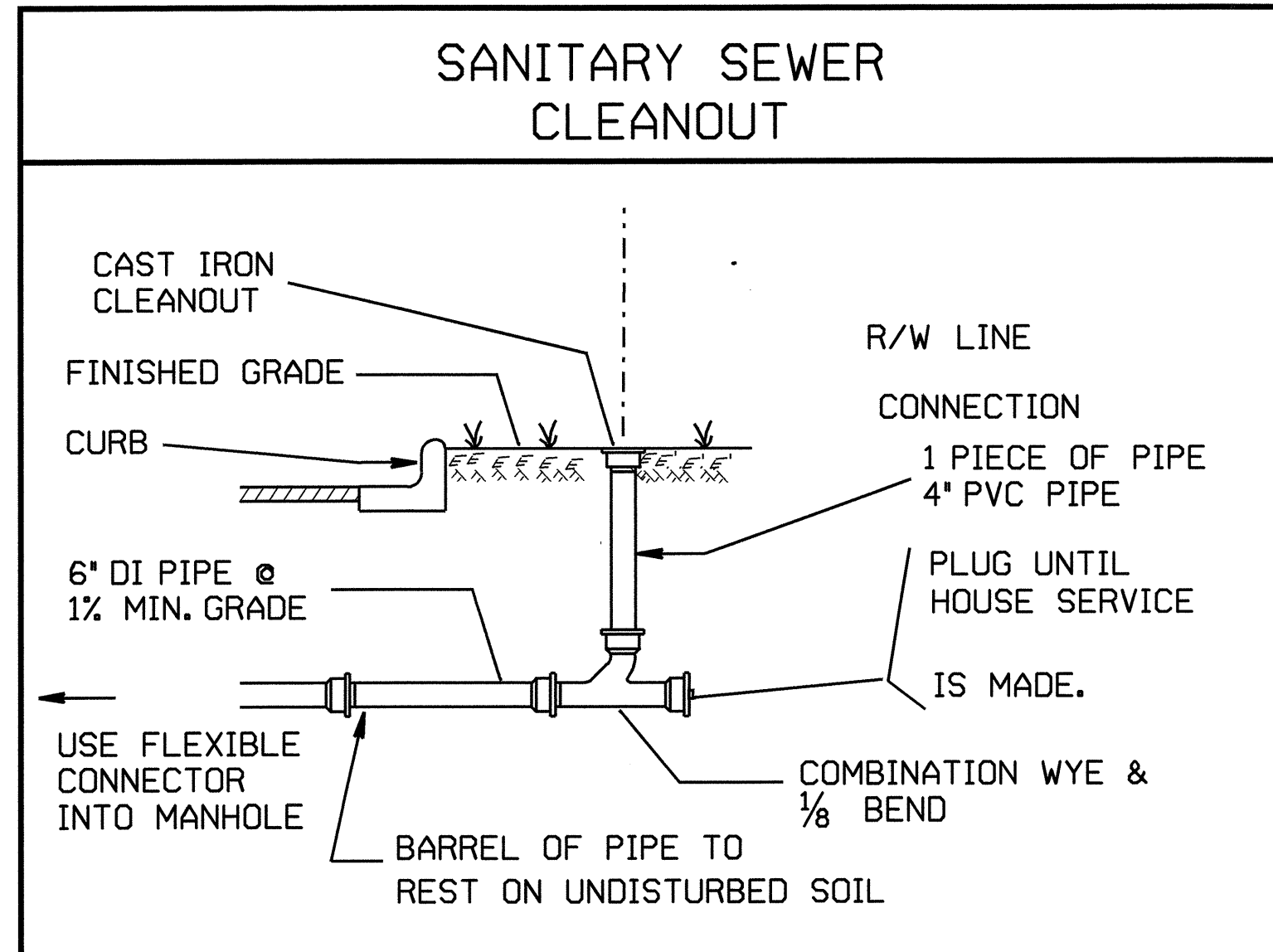


NAD 83

5/14/99
 28-APR-2008 13:46
 utilities\cdh\ut\proj\b4196-ut-4_uc2_psh.dgn
 \$\$\$\$USERNAME\$\$\$\$



UTILITY CONSTRUCTION



MAXIMUM TRENCH WIDTH AT TOP OF PIPE

NOMINAL PIPE SIZE (INCHES)	TRENCH WIDTH (INCHES)	NOMINAL PIPE SIZE (INCHES)	TRENCH WIDTH (INCHES)
4	28	20	44
6	30	24	48
8	32	30	54
10	34	36	60
12	36	42	66
14	38	48	72
16	40	54	78
18	42		

