

PROJECT NOTES

CHANGES MAY BE REQUIRED WHEN PHYSICAL DIMENSIONS IN THE DETAIL DRAWINGS, STANDARD DETAILS AND ROADWAY DETAILS ARE NOT ATTAINABLE TO MEET FIELD CONDITIONS, OR RESULT IN DUPLICATE, OR UNDESIRABLE OVERLAPPING OF DEVICES. MODIFICATION MAY INCLUDE: MOVING, SUPPLEMENTING, COVERING OR REMOVAL OF DEVICES, AS DIRECTED BY THE ENGINEER.

THE FOLLOWING GENERAL NOTES APPLY AT ALL TIMES FOR THE DURATION OF THE CONSTRUCTION PROJECT, EXCEPT WHEN OTHERWISE NOTED IN THE PLAN, OR DIRECTED BY THE ENGINEER.

TIME RESTRICTIONS

A) DO NOT CLOSE OR NARROW TRAVEL LANES AS FOLLOWS:

ROAD NAME	DAY AND TIME RESTRICTIONS
POOLE ROAD (SR 1007)	MONDAY THROUGH FRIDAY 7:00 A.M. TO 9:00 A.M. AND 4:00 P.M. TO 6:00 P.M.

B) DO NOT CLOSE OR NARROW TRAVEL LANES DURING HOLIDAYS AND SPECIAL EVENTS AS FOLLOWS:

ROAD NAME	DAY AND TIME RESTRICTIONS
POOLE ROAD (SR 1007)	MONDAY THROUGH FRIDAY 7:00 A.M. TO 9:00 A.M. AND 4:00 P.M. TO 6:00 P.M.

HOLIDAY

- FOR ANY UNEXPECTED OCCURRENCE THAT CREATES UNUSUALLY HIGH TRAFFIC VOLUMES, AS DIRECTED BY THE ENGINEER.
- FOR NEW YEAR'S DAY, BETWEEN THE HOURS OF 6:00 P.M. DECEMBER 31st TO 7:00 A.M. JANUARY 2ND.

IF NEW YEAR'S DAY IS ON A FRIDAY, SATURDAY, SUNDAY, OR MONDAY, THEN BETWEEN 6:00 P.M. ON THE THURSDAY BEFORE NEW YEAR'S DAY UNTIL 7:00 A.M. THE FOLLOWING TUESDAY.
- FOR EASTER, BETWEEN THE HOURS OF 6:00 P.M. THURSDAY AND 7:00 A.M. MONDAY.
- FOR MEMORIAL DAY, BETWEEN THE HOURS OF 6:00 P.M. FRIDAY TO 7:00 A.M. TUESDAY.
- FOR INDEPENDENCE DAY, BETWEEN THE HOURS OF 6:00 P.M. THE DAY BEFORE INDEPENDENCE DAY AND 7:00 A.M. THE DAY AFTER INDEPENDENCE DAY.

IF INDEPENDENCE DAY IS ON A FRIDAY, SATURDAY, SUNDAY OR MONDAY THEN BETWEEN THE HOURS OF 6:00 P.M. THE THURSDAY BEFORE INDEPENDENCE DAY AND 7:00 A.M. THE TUESDAY AFTER INDEPENDENCE DAY.
- FOR LABOR DAY, BETWEEN THE HOURS OF 6:00 P.M. FRIDAY AND 7:00 A.M. TUESDAY.
- FOR THANKSGIVING DAY, BETWEEN THE HOURS OF 6:00 P.M. TUESDAY TO 7:00 A.M. MONDAY.
- FOR CHRISTMAS, BETWEEN THE HOURS OF 6:00 P.M. THE FRIDAY BEFORE THE WEEK OF CHRISTMAS DAY AND 7:00 A.M. THE FOLLOWING TUESDAY AFTER THE WEEK OF CHRISTMAS.

LANE AND SHOULDER CLOSURE REQUIREMENTS

- REMOVE LANE CLOSURE DEVICES FROM THE LANE WHEN WORK IS NOT BEING PERFORMED BEHIND THE LANE CLOSURE OR WHEN A LANE CLOSURE IS NO LONGER NEEDED, OR AS DIRECTED BY THE ENGINEER.
- WHEN PERSONNEL AND/OR EQUIPMENT ARE WORKING WITHIN 15 FT OF AN OPEN TRAVEL LANE, CLOSE THE NEAREST OPEN SHOULDER USING ROADWAY STANDARD DRAWING NO. 1101.04 UNLESS THE WORK AREA IS PROTECTED BY BARRIER OR GUARDRAIL OR A LANE CLOSURE IS INSTALLED.
- WHEN PERSONNEL AND/OR EQUIPMENT ARE WORKING ON THE SHOULDER ADJACENT TO AN UNDIVIDED FACILITY AND WITHIN 5 FT OF AN OPEN TRAVEL LANE, CLOSE THE NEAREST OPEN TRAVEL LANE USING ROADWAY STANDARD DRAWING NO. 1101.02 UNLESS THE WORK AREA IS PROTECTED BY BARRIER OR GUARDRAIL.
- WHEN PERSONNEL AND/OR EQUIPMENT ARE WORKING WITHIN A LANE OF TRAVEL OF AN UNDIVIDED OR DIVIDED FACILITY, CLOSE THE LANE ACCORDING TO THE TRAFFIC CONTROL PLANS, ROADWAY STANDARD DRAWINGS OR AS DIRECTED BY THE ENGINEER. CONDUCT THE WORK SO THAT ALL PERSONNEL AND/OR EQUIPMENT REMAIN WITHIN THE CLOSED TRAVEL LANE.
- DO NOT WORK SIMULTANEOUSLY WITHIN 15 FT ON BOTH SIDES OF AN OPEN TRAVELWAY, RAMP OR LOOP WITHIN THE SAME LOCATION UNLESS PROTECTED WITH GUARDRAIL OR BARRIER.
- PROVIDE TRAFFIC CONTROL FOR APPROPRIATE LANE CLOSURES FOR SURVEYING DONE BY THE DEPARTMENT.

PAVEMENT EDGE DROP OFF REQUIREMENTS

- BACKFILL AT A 6:1 SLOPE UP TO THE EDGE AND ELEVATION OF EXISTING PAVEMENT IN AREAS ADJACENT TO AN OPENED TRAVEL LANE THAT HAS AN EDGE OF PAVEMENT DROP-OFF AS FOLLOWS:

BACKFILL DROP-OFFS THAT EXCEED 2 INCHES ON ROADWAYS WITH POSTED SPEED LIMITS OF 45 MPH OR GREATER.

BACKFILL DROP-OFFS THAT EXCEED 3 INCHES ON ROADWAYS WITH POSTED SPEED LIMITS LESS THAN 45 MPH.

BACKFILL WITH SUITABLE COMPACTED MATERIAL, AS APPROVED BY THE ENGINEER, AT NO EXPENSE TO THE DEPARTMENT.
- DO NOT EXCEED A DIFFERENCE OF 2 INCHES IN ELEVATION BETWEEN OPEN LANES OF TRAFFIC FOR NOMINAL LIFTS OF 1.5 INCHES. INSTALL ADVANCE WARNING "UNEVEN LANES" SIGNS (W8-11) 500 FT. IN ADVANCE AND A MINIMUM OF EVERY HALF MILE THROUGHOUT THE UNEVEN AREA.

TRAFFIC PATTERN ALTERATIONS

- NOTIFY THE ENGINEER TWENTY ONE (21) CALENDAR DAYS PRIOR TO ANY TRAFFIC PATTERN ALTERATION.

SIGNING

- INSTALL ADVANCE WORK ZONE WARNING SIGNS WHEN WORK IS WITHIN 40 FT FROM THE EDGE OF TRAVEL LANE AND NO MORE THAN THREE (3) DAYS PRIOR TO THE BEGINNING OF CONSTRUCTION.
- PROVIDE PERMANENT SIGNING.
- PROVIDE DETOUR SIGNING WITHIN AND OFF THE PROJECT LIMITS.
- COVER OR REMOVE ALL DETOUR SIGNS WITHIN AND OFF THE PROJECT LIMITS WHEN A DETOUR IS NOT IN OPERATION.
- ENSURE ALL NECESSARY SIGNING IS IN PLACE PRIOR TO ALTERING ANY TRAFFIC PATTERN.
- INSTALL BLACK ON ORANGE "DIP" SIGNS (W8-2) AND/OR "BUMP" SIGNS (W8-1) 350 FT IN ADVANCE OF THE UNEVEN AREA, OR AS DIRECTED BY THE ENGINEER.

TRAFFIC CONTROL DEVICES

- SPACE CHANNELIZING DEVICES IN WORK AREAS NO GREATER THAN TWICE THE POSTED SPEED LIMIT (MPH), EXCEPT 10 FT ON-CENTER IN RADII, AND 3 FT OFF THE EDGE OF AN OPEN TRAVELWAY, WHEN LANE CLOSURES ARE NOT IN EFFECT. WHEN SKINNY DRUMS ARE ALLOWED, REFER TO SECTION 1180 OF STANDARD SPECIFICATIONS FOR ROADS AND STRUCTURES OR AS SHOWN IN THE PLANS.
- PLACE TYPE III BARRICADES, WITH "ROAD CLOSED" SIGN R11-2 ATTACHED, OF SUFFICIENT LENGTH TO CLOSE ENTIRE ROADWAY.

PAVEMENT MARKINGS AND MARKERS



- INSTALL PAVEMENT MARKINGS AND PAVEMENT MARKERS ON THE FINAL SURFACE AS FOLLOWS:

ROAD NAME	MARKING	MARKER
SR 1007 (POOLE RD.)	THERMOPLASTIC	PERMANENT RAISED
BRIDGE NO. 229	TYPE 3 (COLD APPLIED PLASTIC)	PERMANENT RAISED

- INSTALL TEMPORARY PAVEMENT MARKINGS AND TEMPORARY PAVEMENT MARKERS ON INTERIM LAYERS OF PAVEMENT AS FOLLOWS:

ROAD NAME	MARKING	MARKER
DETOUR	PAINT	TEMPORARY RAISED
SR 1007 (POOLE RD.)	PAINT	TEMPORARY RAISED

- PLACE TWO APPLICATIONS OF PAINT PAVEMENT MARKINGS ON THE FINAL WEARING SURFACE. PLACE THE SECOND APPLICATION OF PAINT UPON SUFFICIENT DRYING TIME OF THE FIRST.
- PLACE ONE APPLICATION OF PAINT FOR TEMPORARY TRAFFIC PATTERNS. PLACE A SECOND APPLICATION OF PAINT SIX (6) MONTHS AFTER THE INITIAL APPLICATION AND EVERY SIX MONTHS AS DIRECTED BY THE ENGINEER.
- TIE PROPOSED PAVEMENT MARKING LINES TO EXISTING PAVEMENT MARKING LINES.
- REMOVE/REPLACE ANY CONFLICTING/DAMAGED PAVEMENT MARKINGS AND MARKERS BY THE END OF EACH DAY'S OPERATION.

APPROVED: _____ DATE: _____	PROJECT NOTES	
		
SCALE: NONE		REVISIONS
DATE: 01/08		
DWG. BY: EKG		
DESIGN BY: EKG		
REVIEWED BY: JLP		CADD FILE

PHASE I

PHASING

PHASE II

NOTES: MAINTAIN ACCESS TO ALL DRIVEWAYS AT ALL TIMES DURING CONSTRUCTION.

STEP 1: USING RSD 1101.02, SHEET 1 OF 9 AND TCP-7, INSTALL ADVANCED WORK ZONE WARNING SIGNS ON ALL ROADS AS REQUIRED IN THE PROJECT NOTES.

STEP 2: USING RSD 1101.02, SHEET 1 OF 9, INSTALL TEMPORARY GUARDRAIL ALONG THE EXISTING EASTBOUND LANE OF SR 1007 (POOLE RD.) SEE TCP-4 AND ROADWAY PLANS.

STEP 3: AWAY FROM TRAFFIC CONSTRUCT THE TEMPORARY DETOUR FROM -L- STA. 17+68 +/- TO -L- STA. 25+00 +/- INCLUDING TEMPORARY DRAINAGE, STRUCTURES AND TEMPORARY GUARDRAIL. SEE TCP-4 AND ROADWAY PLANS.

STEP 4: USING RSD 1101.02, SHEET 1 OF 9, AND WORKING IN A CONTINUOUS MANNER PERFORM THE FOLLOWING: SEE TCP-4 & TCP-5 AND ROADWAY PLANS.

AT THE END OF THE WORKDAY, SHIFT TRAFFIC FROM EXISTING TWO-LANE, TWO-WAY TRAFFIC PATTERN ONTO THE DETOUR IN A TEMPORARY TWO-LANE, TWO-WAY TRAFFIC PATTERN.

1) PLACE TRAFFIC IN A ONE-LANE, TWO-WAY TEMPORARY TRAFFIC PATTERN ON THE EXISTING WESTBOUND LANE OF SR 1007 (POOLE RD.) AND CONSTRUCT THE DETOUR EASTBOUND TIE IN WORK FROM:
-L- STA. 14+82 +/- TO -L- STA. 17+68 +/- AND
-L- STA. 25+00 +/- TO -L- STA. 27+46 +/-.

- PLACE TEMPORARY PAVEMENT MARKING (PAINT) AND MARKERS (TEMPORARY RAISED) FROM -L- STA. 14+82 +/- TO -L- STA. 27+46 +/-.

2) SHIFT TRAFFIC TO DETOUR EASTBOUND LANE IN A ONE-LANE, TWO-WAY TEMPORARY TRAFFIC PATTERN TO CONSTRUCT THE DETOUR WESTBOUND TIE IN WORK FROM:
-L- STA. 14+82 +/- TO -L- STA. 17+68 +/- AND
-L- STA. 25+00 +/- TO -L- STA. 27+46 +/-.

- PLACE TEMPORARY PAVEMENT MARKING (PAINT) FROM -L- STA. 14+82 +/- TO -L- STA. 27+46 +/-.

3) PLACE TRAFFIC IN A TWO-LANE, TWO-WAY TEMPORARY TRAFFIC PATTERN ON THE DETOUR AND PLACE TYPE III BARRICADES TO CLOSE EXISTING SR 1007 (POOLE RD.) TO TRAFFIC.

STEP 1: AWAY FROM TRAFFIC PERFORM THE FOLLOWING: SEE TCP-5 AND ROADWAY PLANS.

1) REMOVE THE TEMPORARY GUARDRAIL THAT WAS INSTALLED IN PHASE I, STEP 2 ALONG THE EXISTING EASTBOUND LANE OF SR 1007 (POOLE RD.)

2) CONSTRUCT DRAINAGE AND PROPOSED FROM -L- STA. 16+00 +/- TO -L- STA. 26+00 +/- UP TO EDGE AND ELEVATION OF EXISTING INCLUDING PROPOSED STRUCTURE FROM -L- STA. 21+18 +/- TO -L- STA. 22+08 +/-.

3) INSTALL PROPOSED GUARDRAIL. WHERE THE PROPOSED GUARDRAIL CONFLICTS WITH THE DETOUR, INSTALL THE GRAU-350 IN A TEMPORARY LOCATION THAT CONFORMS TO THE ROADSIDE DESIGN GUIDE.

STEP 2: USING RSD 1101.02, SHEET 1 OF 9, AND WORKING IN A CONTINUOUS MANNER PERFORM THE FOLLOWING: SEE TCP-5 AND TCP-6.

AT THE END OF THE WORKDAY, SHIFT TRAFFIC FROM THE DETOUR TWO-LANE, TWO-WAY TRAFFIC PATTERN ONTO THE PROPOSED -L- IN THE FINAL TWO-LANE, TWO-WAY TRAFFIC PATTERN.

1) PLACE TRAFFIC IN A ONE-LANE, TWO-WAY TRAFFIC PATTERN ON THE DETOUR EASTBOUND LANE. CONSTRUCT THE PROPOSED WESTBOUND TIE IN WORK UP TO BUT NOT INCLUDING THE FINAL SURFACE COURSE FROM:
-L- STA. 16+00 +/- TO -L- STA. 17+68 +/- AND
-L- STA. 25+00 +/- TO -L- STA. 26+00 +/-.

- PLACE TEMPORARY PAVEMENT MARKING (PAINT) AND MARKERS (TEMPORARY RAISED) FROM -L- STA. 16+00 +/- TO -L- STA. 26+00 +/-.

2) SHIFT TRAFFIC TO PROPOSED WESTBOUND LANE IN A ONE-LANE, TWO-WAY TRAFFIC PATTERN TO CONSTRUCT THE PROPOSED EASTBOUND TIE IN WORK UP TO BUT NOT INCLUDING THE FINAL SURFACE COURSE FROM:
-L- STA. 16+00 +/- TO -L- STA. 17+68 +/- AND
-L- STA. 25+00 +/- TO -L- STA. 26+00 +/-.

- RESET THE GRAU-350 AND COMPLETE THE INSTALLATION OF THE PROPOSED GUARDRAIL THAT CONFLICTED WITH THE DETOUR. SEE TCP-6 AND ROADWAY PLANS.

- PLACE TEMPORARY PAVEMENT MARKING (PAINT) FROM -L- STA. 16+00 +/- TO -L- STA. 26+00 +/-.

3) PLACE TRAFFIC ON PROPOSED -L- IN A TWO-LANE, TWO-WAY FINAL TRAFFIC PATTERN AND PLACE TYPE III BARRICADES TO CLOSE DETOUR TO TRAFFIC.

STEP 3: - AWAY FROM TRAFFIC REMOVE DETOUR AND STRUCTURE: SEE TCP-6 AND ROADWAY PLANS.

- USING RSD 1101.02, SHEET 1 OF 9, PERFORM THE FOLLOWING: SEE TCP-6.

1) PLACE FINAL PAVEMENT SURFACE COURSE FROM -L- STA. 16+00 +/- TO -L- STA. 26+00 +/-.

2) PLACE FINAL PAVEMENT MARKINGS (THERMOPLASTIC) AND MARKERS (PERMANENT RAISED) ON -L- FROM -L- STA. 14+82 +/- TO -L- STA. 27+46 +/- INCLUDING COLD APPLIED PLASTIC TYPE 3 ON CONCRETE BRIDGE DECK FROM -L- STA. 21+18 +/- TO -L- STA. 22+18 +/-.

3) REMOVE ALL TRAFFIC CONTROL DEVICES.

TEMPORARY PAVEMENT MARKING SCHEDULE (-L- AND DETOUR)

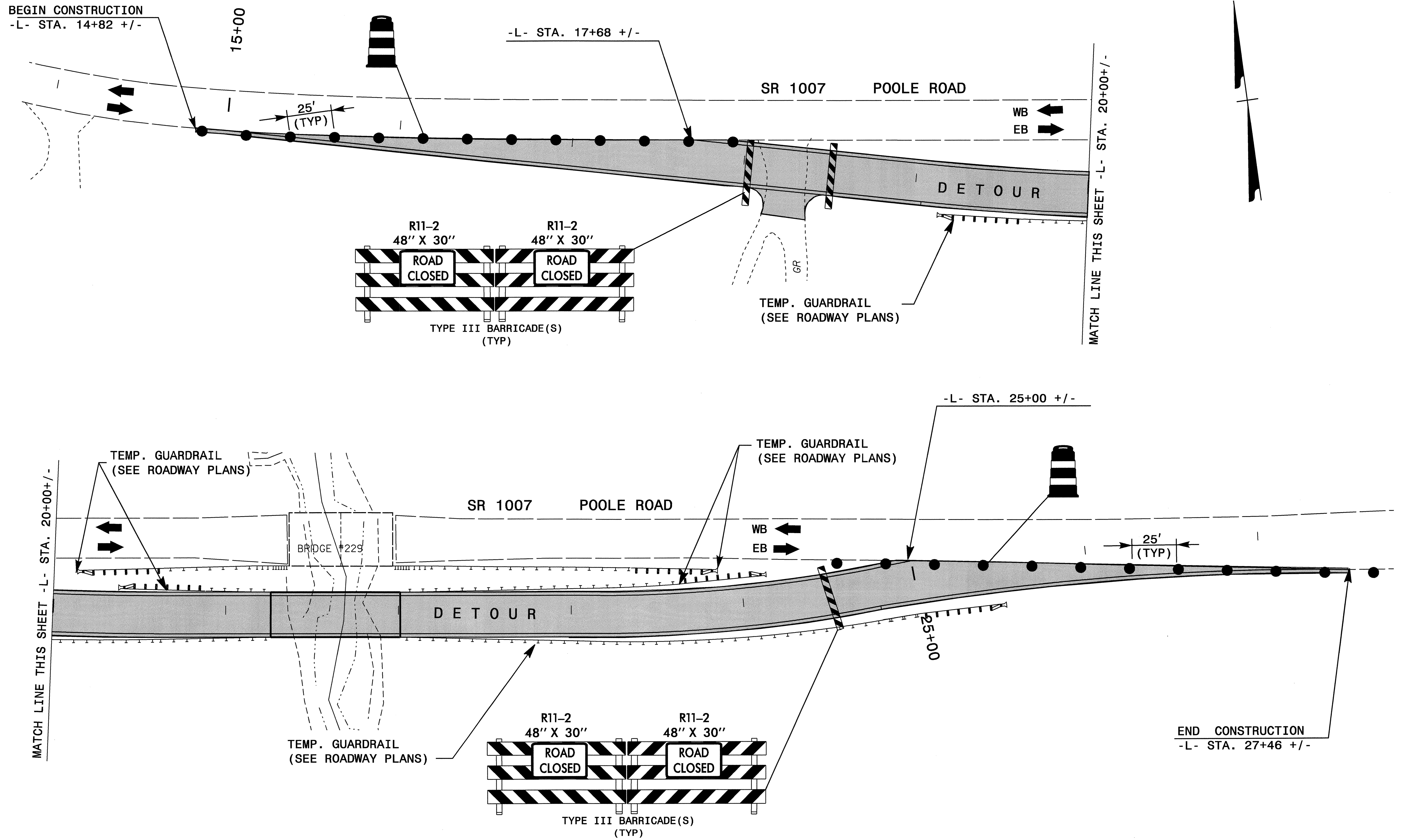
SYMBOL	DESCRIPTION	PAY ITEM QUANTITY BREAKDOWN		TOTAL QUANTITY	
TEMPORARY PAVEMENT MARKINGS					
PAINT (4")					
PA	WHITE EDGELINE (2X)	11200	LF	TOTAL	22400 LF
PI	YELLOW DOUBLE CENTER (2X)	11200	LF		
MARKERS					
TEMPORARY RAISED PAVEMENT MARKERS					
MH	YELLOW & YELLOW	40	EA	TOTAL	40 EA

AS DIRECTED BY THE ENGINEER, TEMPORARY PAVEMENT MARKING (PAINT) MAY BE USED TO STRIPE THE FINAL TRAFFIC PATTERN ON -L-. THIS SCHEDULE INCLUDES QUANTITIES FOR PLACING TWO APPLICATIONS OF PAINT ON THE FINAL SURFACE OF NEW ASPHALT WITH PERMANENT TRAFFIC PATTERNS WHICH WILL REMAIN IN PLACE UNTIL THE PROPOSED FINAL PAVEMENT MARKING (THERMOPLASTIC) MAY BE APPLIED.


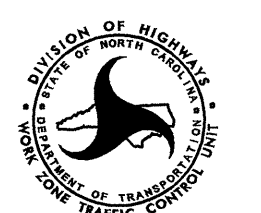
FOR EACH PAINT PAVEMENT MARKING ITEM, 1X IMPLIES A SINGLE APPLICATION, 2X IMPLIES TWO APPLICATIONS AND 3X IMPLIES THREE APPLICATIONS.

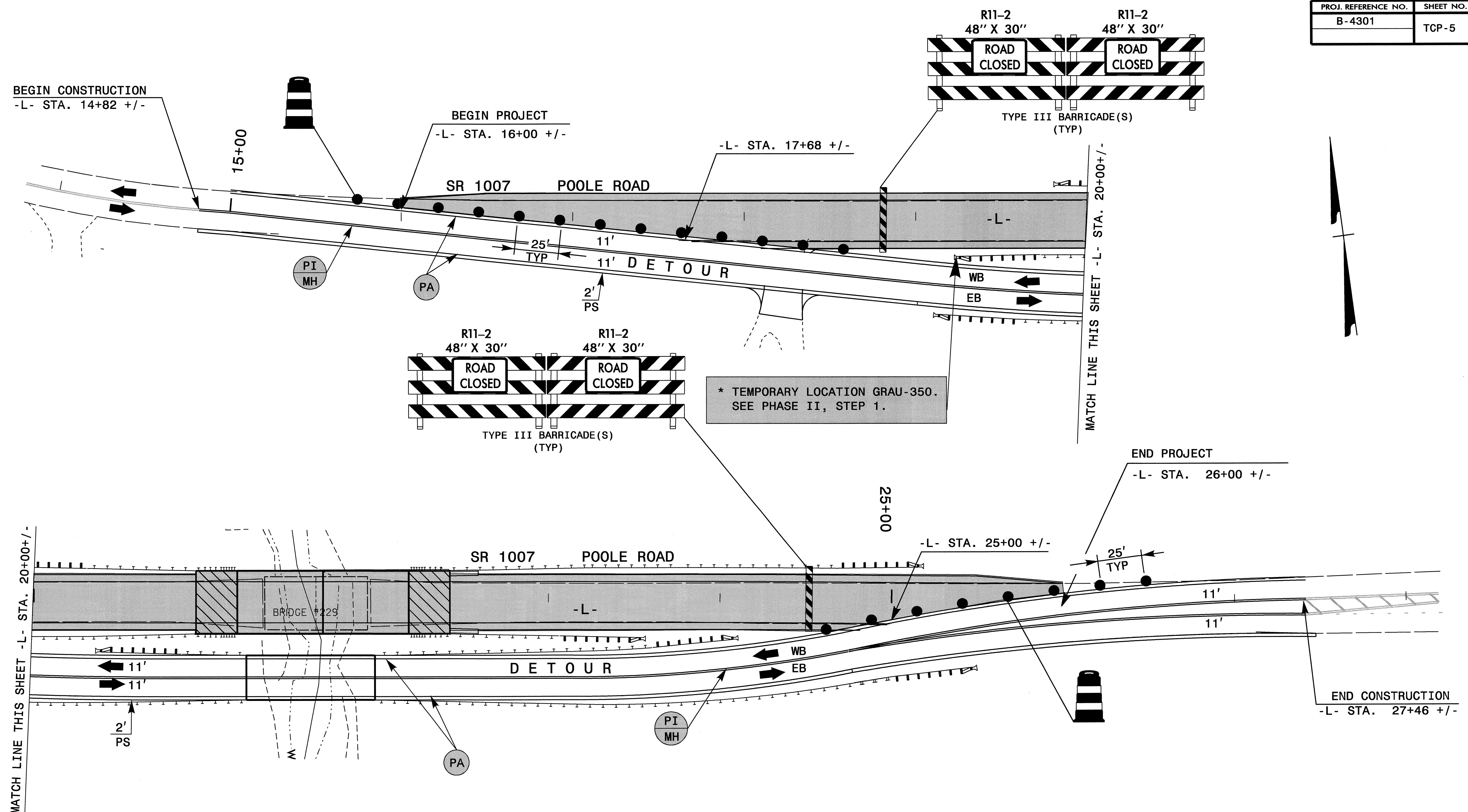
APPROVED: _____ DATE: _____	PHASING AND TEMPORARY PAVEMENT MARKING SCHEDULE		
	SCALE: NONE		
	DATE: 01/08		REVISIONS
	DWG. BY: EKG		
	DESIGN BY: EKG		
REVIEWED BY: JLP			

22-JAN-2008 09:01
 \\dot\dfsroot\01\Proj\TIP\Projects-B\B4301\TrafficControl\TCP\B4301.TCP-3.dgn
 At WZTC224164
 ekgroundwater



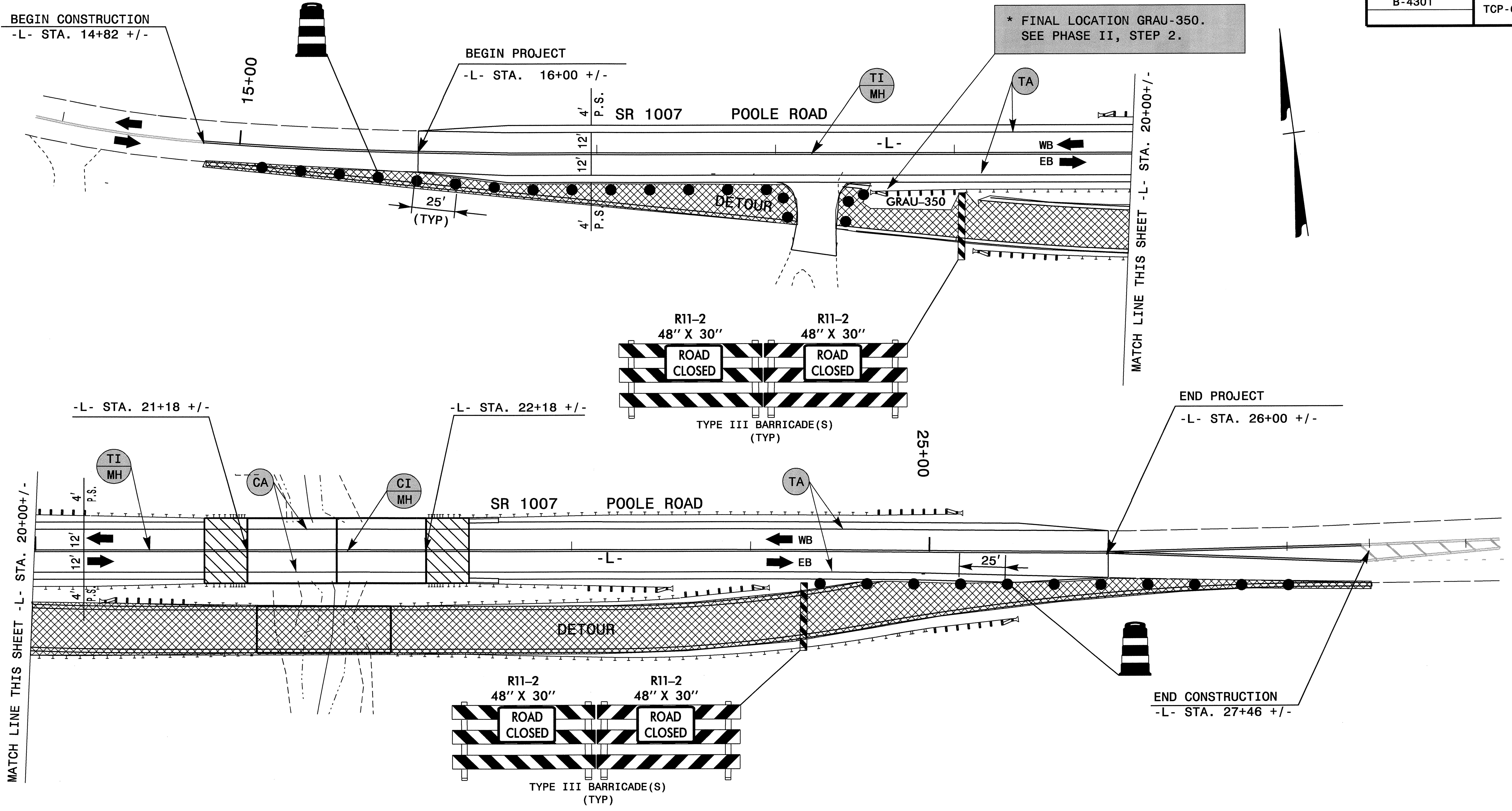
22-JAN-2008 09:01
 \\dot\dfsroot\01\Proj\TIP\Projects-B\B4301\TrafficControl\TCP\B4301.TCP-4.dgn
 AT WZTC22464
 ekgroundwater

APPROVED: _____ DATE: _____	DETAIL I	
		
SCALE: NONE		REVISIONS
DATE: 01/08		
DWG. BY: EKG		
DESIGN BY: EKG		
REVIEWED BY: JLP		CADD FILE

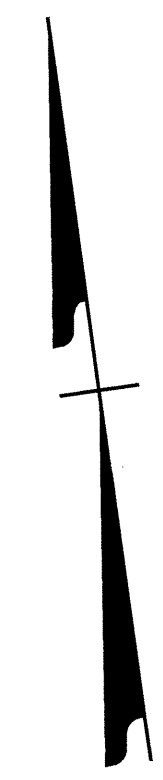


22-JAN-2008 09:01
 \\dot\dfsroot\01\Proj\TIP\Projects-B\B4301\Tran\Tran\Control\TCP\B4301_TCP-5.dgn
 ekggroundwater AT WZTC22464

APPROVED: _____ DATE: _____	DETAIL 2										
	SCALE: NONE										
	DATE: 01/08										
	DESIGN BY: EKG										
	REVIEWED BY: JLP										
<table border="1"> <thead> <tr> <th colspan="2">REVISIONS</th> </tr> </thead> <tbody> <tr> <td> </td> <td> </td> </tr> <tr> <td> </td> <td> </td> </tr> <tr> <td> </td> <td> </td> </tr> </tbody> </table>		REVISIONS								<table border="1"> <tr> <td>CADD FILE</td> </tr> </table>	CADD FILE
REVISIONS											
CADD FILE											



* FINAL LOCATION GRAU-350.
SEE PHASE II, STEP 2.



22-JAN-2008 09:01
 \\dot\dfsroot\01\Proj\TIP\Projects-B\B4301\Traffic\TrafficControl\TCP\B430L_TCP-6.dgn
 AT: WZTC224164
 ekgroundwater

APPROVED: _____ DATE: _____	DETAIL 3 & FINAL PAVEMENT MARKING PLAN	
SCALE: NONE		REVISIONS
DATE: 01/08		
DWG. BY: EKG		
DESIGN BY: EKG		
REVIEWED BY: JLP		CAD FILE <input type="checkbox"/>

STATE OF NORTH CAROLINA
DIVISION OF HIGHWAYS

STATE PROJECT REFERENCE NO.	SHEET NO.
B-4301	TCP-1

**PLAN FOR PROPOSED
TRAFFIC CONTROL, MARKING & DELINEATION
WAKE COUNTY**

B-4301

ROADWAY STANDARD DRAWINGS

THE FOLLOWING ROADWAY STANDARDS AS APPEAR IN "ROADWAY STANDARD DRAWINGS"- PROJECT SERVICES UNIT-N.C. DEPARTMENT OF TRANSPORTATION-RALEIGH, N.C., DATED JULY 2006 ARE APPLICABLE TO THIS PROJECT AND BY REFERENCE HEREBY ARE CONSIDERED A PART OF THESE PLANS:

STD. NO.	TITLE
1101.02	TEMPORARY LANE CLOSURES
1101.03	TEMPORARY ROAD CLOSURES
1101.04	TEMPORARY SHOULDER CLOSURES
1101.11	TRAFFIC CONTROL DESIGN TABLES
1110.01	STATIONARY WORK ZONE SIGNS
1110.02	PORTABLE WORK ZONE SIGNS
1130.01	DRUM
1135.01	CONES
1145.01	BARRICADES
1150.01	FLAGGING DEVICES
1180.01	SKINNY-DRUM
1205.01	PAVEMENT MARKINGS - LINE TYPES & OFFSETS
1205.02	PAVEMENT MARKINGS - 2 LANE & MULTILANE ROADWAYS
1205.12	PAVEMENT MARKINGS - BRIDGES
1250.01	PAVEMENT MARKER SPACING
1251.01	RAISED PAVEMENT MARKERS (TEMPORARY & PERMANENT)
1261.01	GUARDRAIL & BARRIER DELINEATOR SPACING
1261.02	GUARDRAIL & BARRIER DELINEATOR TYPES
1262.01	GUARDRAIL END DELINEATION

INDEX OF SHEETS

SHEET NO.	TITLE
TCP-1	LIST OF APPLICABLE ROADWAY STANDARD DRAWINGS, LEGEND, INDEX OF SHEETS AND FINAL PAVEMENT MARKING SCHEDULE
TCP-2	PROJECT NOTES
TCP-3	PHASING AND TEMPORARY PAVEMENT MARKING SCHEDULE
TCP-4	DETAIL 1
TCP-5	DETAIL 2
TCP-6	DETAIL 3 & FINAL PAVEMENT MARKING PLAN
TCP-7	DETAIL FOR TWO-WAY UNDIVIDED WORK ZONE WARNING SIGNS

LEGEND

- GENERAL**
- DIRECTION OF TRAFFIC FLOW
 - NORTH ARROW
 - PROPOSED PVMT. EXIST. PVMT.
 - WORK AREA
 - REMOVAL OF EXISTING PAVEMENT

TRAFFIC CONTROL DEVICES

- TYPE I BARRICADE
- TYPE II BARRICADE
- TYPE III BARRICADE
- CONE
- DRUM SKINNY DRUM
- FLASHING ARROW PANEL (TYPE C)
- STATIONARY SIGN
- PORTABLE SIGN
- STATIONARY OR PORTABLE SIGN
- WARNING FLAGS
- CRASH CUSHION
- CHANGEABLE MESSAGE SIGN
- TRUCK MOUNTED IMPACT ATTENUATOR (TMIA)
- POLICE
- FLAGGER

PAVEMENT MARKINGS

- CRYSTAL/CRYSTAL PAVEMENT MARKER
- YELLOW/YELLOW PAVEMENT MARKER
- CRYSTAL/RED PAVEMENT MARKER
- PAVEMENT MARKING SYMBOLS

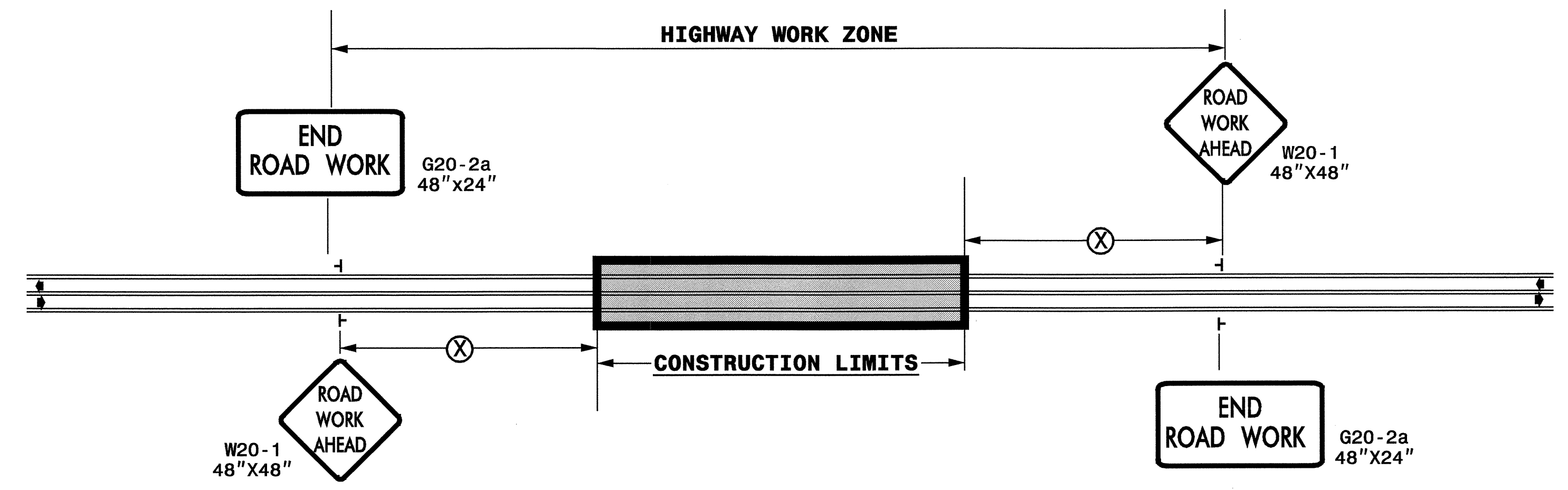
FINAL PAVEMENT MARKING SCHEDULE

SYMBOL	DESCRIPTION	PAY ITEM QUANTITY BREAKDOWN		TOTAL QUANTITY
FINAL PAVEMENT MARKINGS				
CA	WHITE EDGELINE	COLD APPLIED PLASTIC (4") Type 3 - Permanent Wet Reflective		
		220	LF	
CI	YELLOW DOUBLE CENTER	220	LF	
			TOTAL	440 LF
TI	YELLOW DOUBLE CENTER	THERMOPLASTIC(4", 120 MILS)		
		2600	LF	
			TOTAL	2600 LF
TA	WHITE EDGELINE	THERMOPLASTIC(4", 90 MILS)		
		2600	LF	
			TOTAL	2600 LF
MARKERS				
MA	YELLOW & YELLOW	PERMANENT RAISED PAVEMENT MARKERS		
		20	EA	
			TOTAL	20 EA

APPROVED: _____ DATE: _____	PLAN PREPARED BY: N.C.D.O.T. WORK ZONE TRAFFIC CONTROL UNIT
	J. S. BOURNE, PE <i>TRAFFIC CONTROL ENGINEER</i>
	J. ISHAK, PE <i>TRAFFIC CONTROL PROJECT ENGINEER</i>
	J.L. PORTANOVA, PE <i>TRAFFIC CONTROL PROJECT DESIGN ENGINEER</i>
	E. K. GROUNDWATER <i>TRAFFIC CONTROL DESIGN ENGINEER / TECHNICIAN</i>

TIP PROJECT:

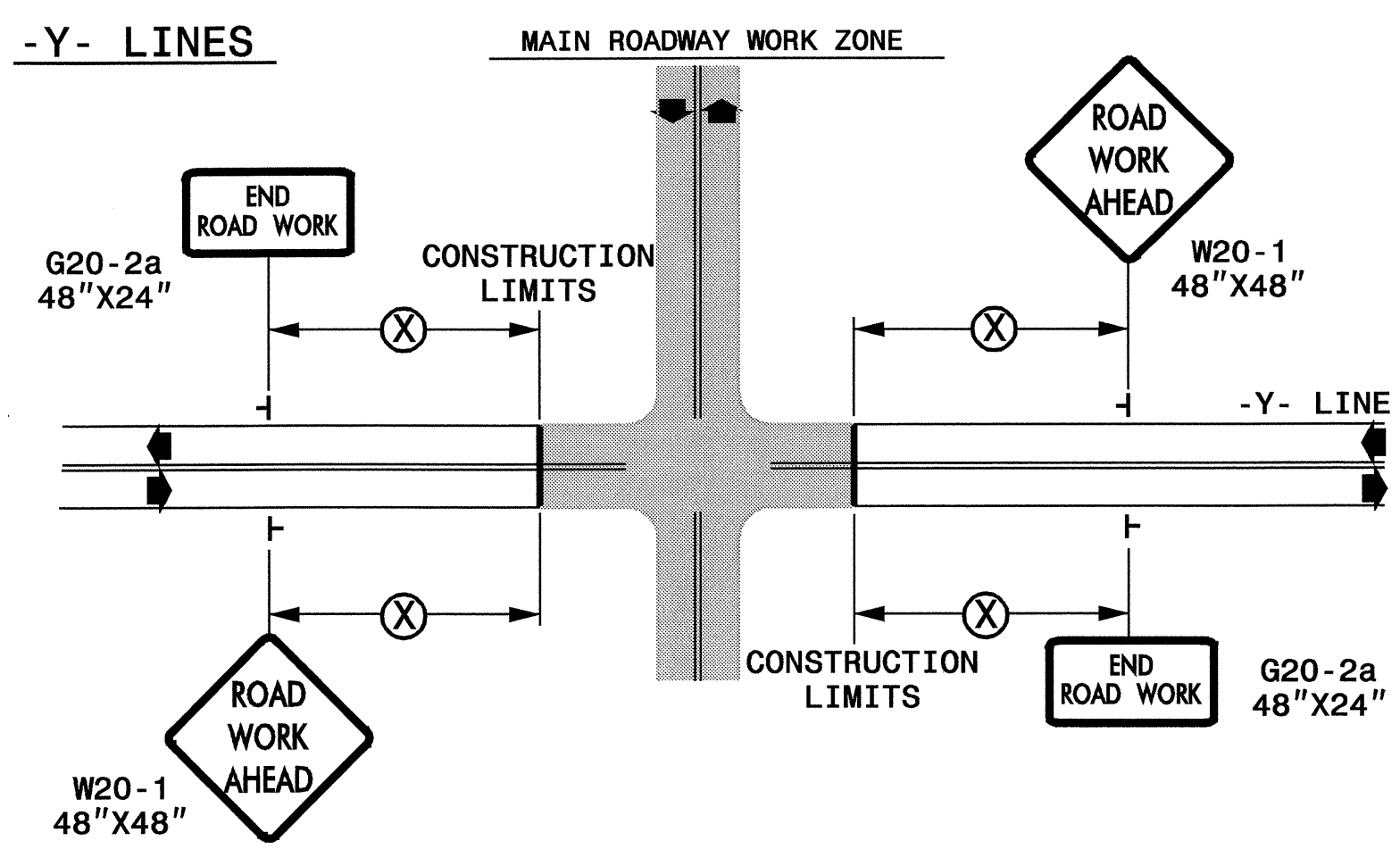
TWO-WAY UNDIVIDED ** (L-LINES)



POSTED SPEED LIMIT (M.P.H.)	RECOMMENDED MINIMUM SIGN SPACING
≤ 50	500'
≥ 55	1000'

STATE OF NORTH CAROLINA
DEPT. OF TRANSPORTATION
DIVISION OF HIGHWAYS
RALEIGH, N.C.

ROADWAYS INTERSECTING ALONG 2 WAY UNDIVIDED WORK ZONE (Y-LINES)



GENERAL NOTES

- USE FLUORESCENT ORANGE SHEETING (TYPE VII OR HIGHER) ON ALL ADVANCED WORK ZONE SIGNS.
- DO NOT INSTALL ADVANCE WARNING SIGNS MORE THAN 3 DAYS PRIOR TO BEGINNING OF WORK.
- SIGNS SHOWN ARE REQUIRED FOR WORK ZONES THAT WILL REMAIN IN EFFECT OVERNIGHT. FOR SHORT-TERM DAILY MAINTENANCE TYPE OPERATIONS, THIS SIGNING APPLICATION IS OPTIONAL; MAY USE ONLY APPLICABLE ROADWAY STANDARD DRAWINGS INSTEAD. HOWEVER, IF THIS SIGNING APPLICATION IS USED, SIGNS MAY BE PORTABLE MOUNTED.
- ALL SIGN SPACING DIMENSIONS ARE APPROXIMATE, FIELD ADJUST AS NECESSARY OR AS DIRECTED.
- USE 3LB STEEL U-CHANNEL POST OR 4" X 4" WOOD POST FOR ALL WORK ZONE SIGNS. 3LB STEEL U-CHANNEL POSTS MUST MEET THE REQUIREMENTS OF STANDARD SPECIFICATION SECTION 1094-1(B), MAY BE GALVANIZED STEEL, OR MAY BE PAINTED GREEN BY THE POST MANUFACTURER. SQUARE STEEL TUBING POSTS HAVING EQUIVALENT STRENGTH OF THE 3 LB STEEL U-CHANNEL POST ARE ALSO ACCEPTABLE FOR USE. ERECT SIGNS PER ROADWAY STANDARD DRAWING 1110.01. PAYMENT FOR WOOD POSTS, 3LB STEEL U-CHANNEL AND SQUARE STEEL TUBING POSTS WITH SIGNS WILL BE MADE ACCORDING TO STANDARD SPECIFICATION "WORK ZONE SIGNS" SECTION 1110.
- WHEN NECESSARY, USE SPLICING IN ACCORDANCE WITH ROADWAY STANDARD DRAWING NO. 1110.01. REMOVE ENTIRE POST WHEN REMOVING SIGNS WITH SPLICED POSTS.
- DO NOT BACK BRACE SIGN SUPPORTS.
- ** TWO-WAY UNDIVIDED ADVANCE WARNING SIGN CONFIGURATION MAY BE USED ON URBAN MULTI-LANE FACILITIES WHERE CONDITIONS LIMIT THE USE OF DUAL MOUNTED SIGNS AS DETERMINED BY THE ENGINEER.

LEGEND

┆ STATIONARY SIGN

◀ DIRECTION OF TRAFFIC FLOW

DETAIL DRAWING FOR
TWO-WAY UNDIVIDED
WORK ZONE WARNING SIGNS

SHEET 1 OF 1

APPROVED: _____ DATE: _____	DETAIL DRAWING FOR TWO-WAY UNDIVIDED AND URBAN FREEWAYS ADVANCED WORK ZONE WARNING SIGNS	
	SCALE: NONE	REVISIONS
	DATE: 01/08	7-98 10/01
	DWG. BY: NCDOT	10-98 03/04
	DESIGN BY: NCDOT	01/01 11/04
REVIEWED BY: JLP	CADD FILE	

22-JAN-2008 09:01
 \\dot\dfsroot\01\Projects\B4301\TrafficControl\TCP\B4301.TCP-7.dgn
 AT WZTC2464