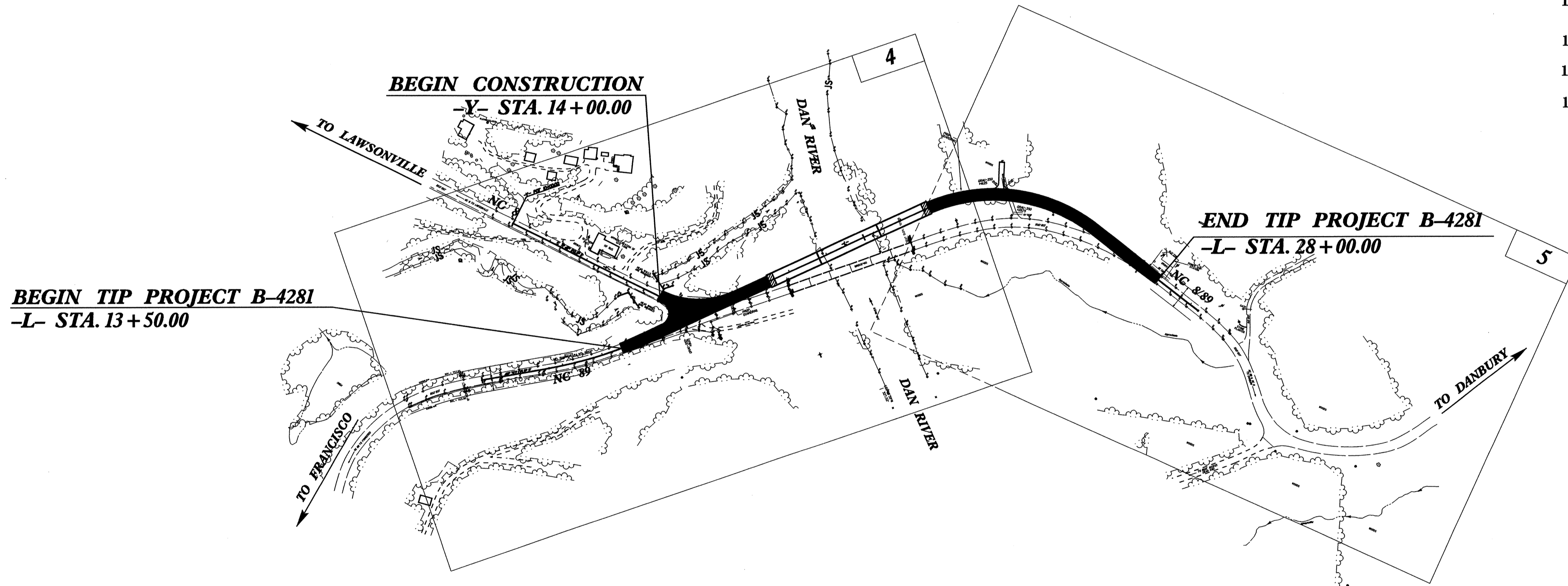
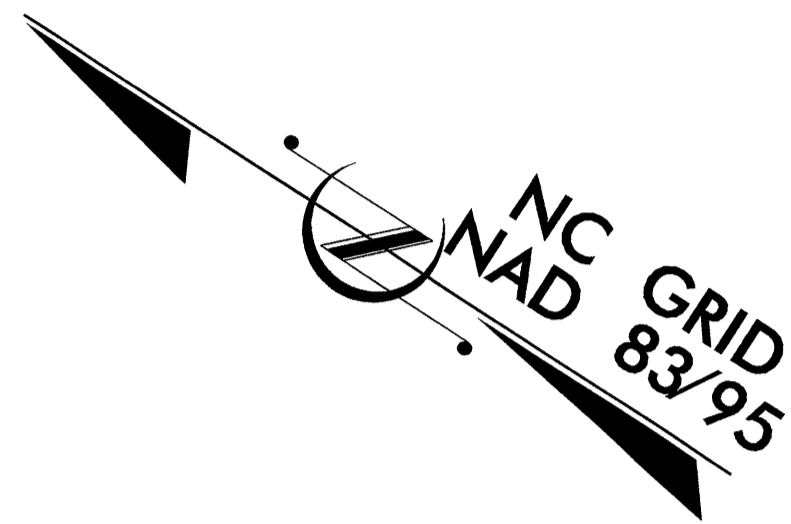


**TIP PROJECT: B-4281**

STATE OF NORTH CAROLINA  
 DIVISION OF HIGHWAYS  
 PLAN FOR PROPOSED  
 HIGHWAY EROSION CONTROL  
**STOKES COUNTY**

**LOCATION: BRIDGE NO. 60 OVER DAN RIVER ON  
 NC 8/89**

**TYPE OF WORK: GRADING, DRAINAGE, PAVING &  
 STRUCTURE**



STATE	STATE PROJECT REFERENCE NO.	SHEET NO.	TOTAL SHEETS
N.C.	B-4281	EC-1	
STATE PROJ. NO.	F.A. PROJ. NO.	DESCRIPTION	

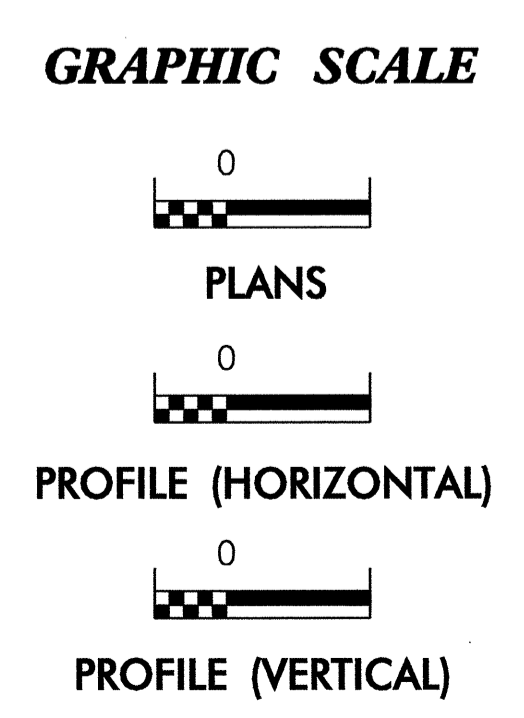
**EROSION AND SEDIMENT CONTROL MEASURES**

Std. #	Description	Symbol
	Streambank Reformation	
1630.03	Temporary Silt Ditch	
1630.05	Temporary Diversion	
1605.01	Temporary Silt Fence	
1606.01	Special Sediment Control Fence	
1622.01	Temporary Berms and Slope Drains	
1630.01	Riser Basin	
1630.02	Silt Basin Type B	
1633.01	Temporary Rock Silt Check Type-A	
	Temporary Rock Silt Check Type-B	
1634.01	Temporary Rock Sediment Dam Type-A	
1634.02	Temporary Rock Sediment Dam Type-B	
1635.01	Rock Pipe Inlet Sediment Trap Type-A	
1635.02	Rock Pipe Inlet Sediment Trap Type-B	
1630.04	Stilling Basin	
	Rock Inlet Sediment Trap:	
1632.01	Type A	
1632.02	Type B	
1632.03	Type C	
	Skimmer Basin	
	Tiered Skimmer Basin	
	Infiltration Basin	

**THIS PROJECT CONTAINS  
 EROSION CONTROL PLANS  
 FOR CLEARING AND  
 GRUBBING PHASE OF  
 CONSTRUCTION.**

**THIS PROJECT HAS  
 BEEN DESIGNED TO  
 SENSITIVE WATERSHED  
 STANDARDS.**

**ENVIRONMENTALLY  
 SENSITIVE AREA(S) EXIST  
 ON THIS PROJECT**  
*Refer To E. C. Special Provisions  
 for Special Considerations.*



ROADSIDE ENVIRONMENTAL UNIT  
 DIVISION OF HIGHWAYS  
 STATE OF NORTH CAROLINA

Prepared In the Office of:  
**ROADSIDE ENVIRONMENTAL UNIT**  
 1 South Wilmington St.  
 Raleigh, NC 27611  
**2006 STANDARD SPECIFICATIONS**

Roadway Standard Drawings

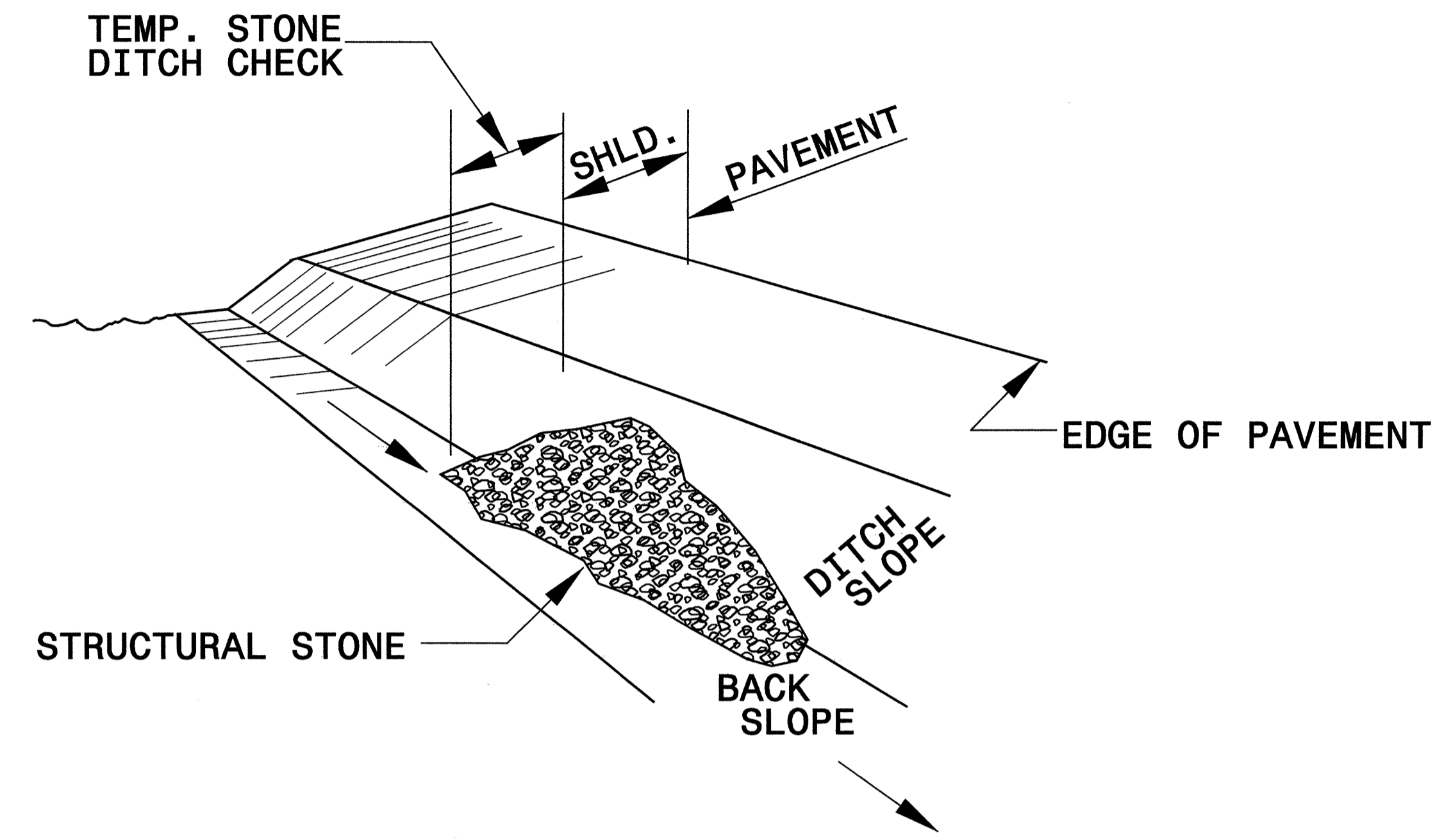
The following roadway english standards as appear in "Roadway Standard Drawings"- Roadway Design Unit - N. C. Department of Transportation - Raleigh, N. C., dated July 18, 2006 and the latest revision thereto are applicable to this project and by reference hereby are considered a part of these plans.

1605.01 Temporary Silt Fence	1630.05 Temporary Diversion
1606.01 Special Sediment Control Fence	1630.06 Special Stilling Basin
1607.01 Gravel Construction Entrance	1632.03 Rock Inlet Sediment Trap Type C
1622.01 Temporary Berms and Slope Drains	1633.01 Temporary Rock Silt Check Type A
1630.03 Temporary Silt Ditch	1635.02 Rock Pipe Inlet Sediment Trap Type B

02/14/2008 10:52:22 AM \\snp\project\2007\RENW221502\AT\RENW221502.dwg

PROJECT REFERENCE NO. <i>B-4281</i>	SHEET NO. <i>EC-2</i>
RW SHEET NO.	
ROADWAY DESIGN ENGINEER	HYDRAULICS ENGINEER

# TEMPORARY ROCK SILT CHECK TYPE 'B' DETAIL

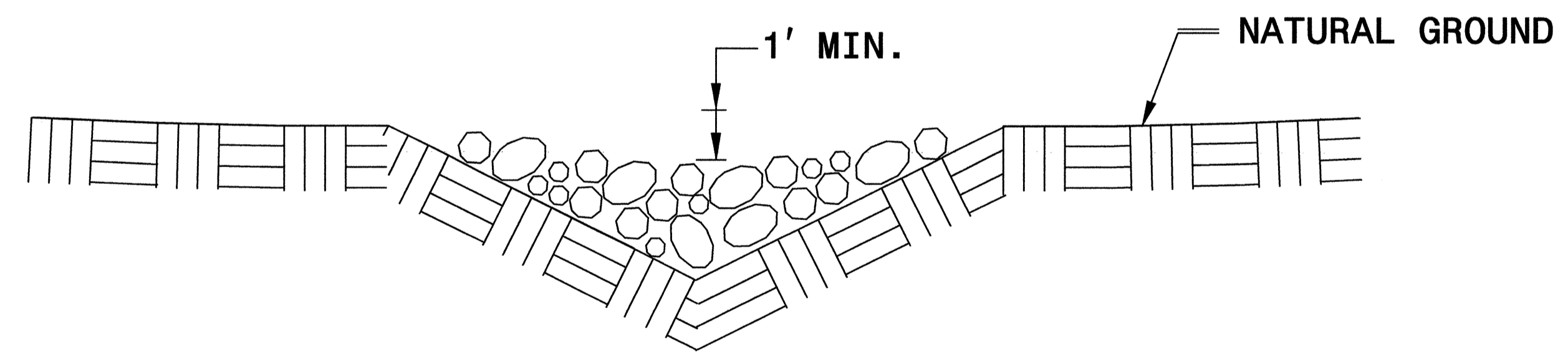


**ISOMETRIC VIEW**

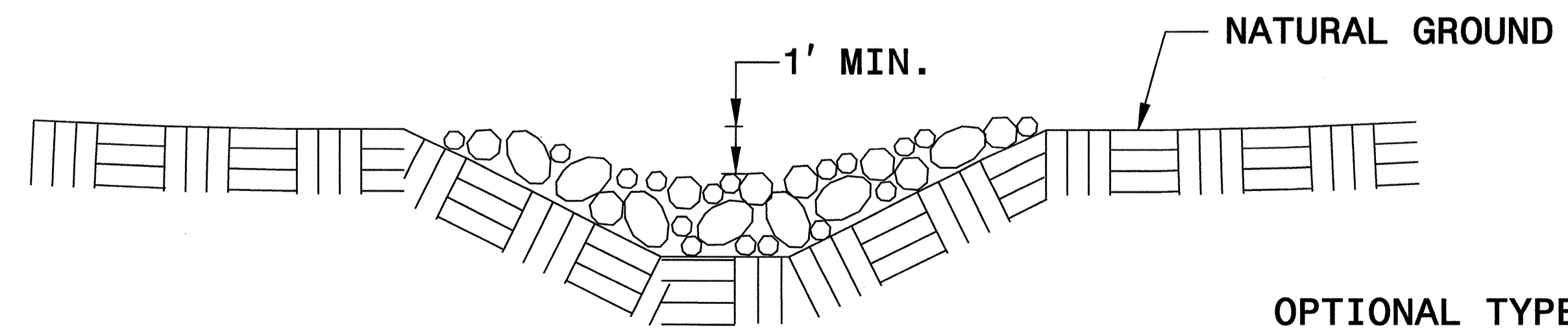
**NOTES:**

USE CLASS 'B' EROSION CONTROL STONE FOR STRUCTURAL STONE.

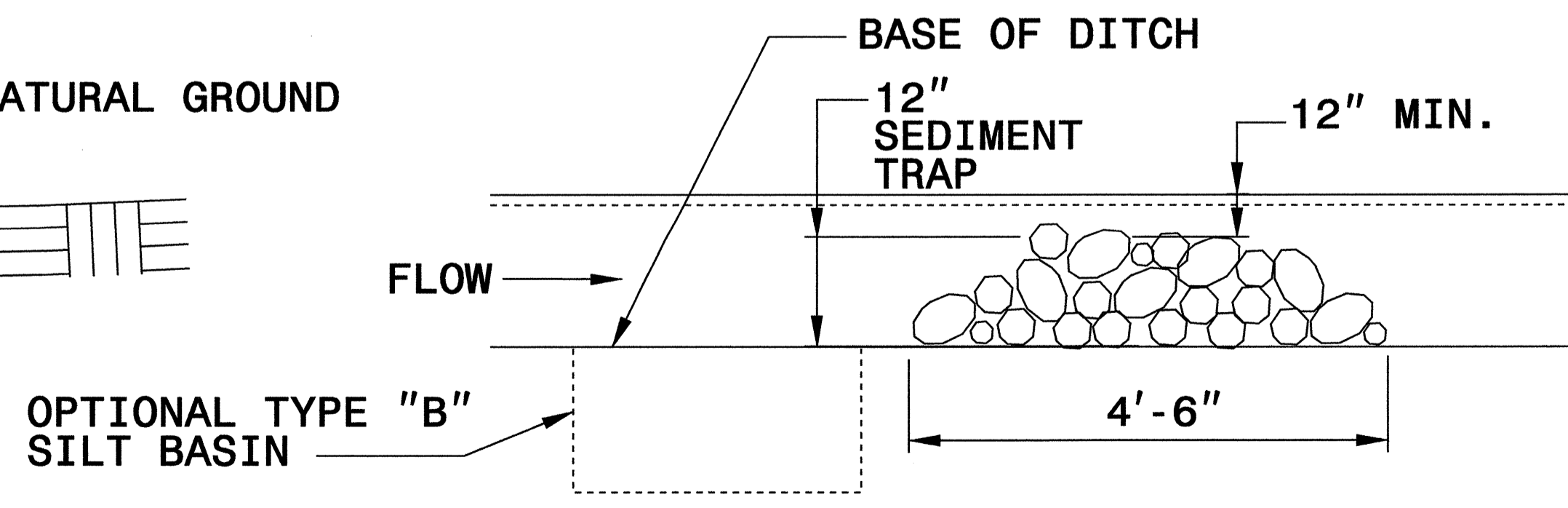
THE ENGINEER MAY DIRECT THE OPTION OF CLASS "A" STONE FOR SITES HAVING LESS THAN ONE (1) ACRE DRAINAGE AREA AND A DITCH GRADE LESS THAN 3%.



**CROSS SECTION VEE DITCH**



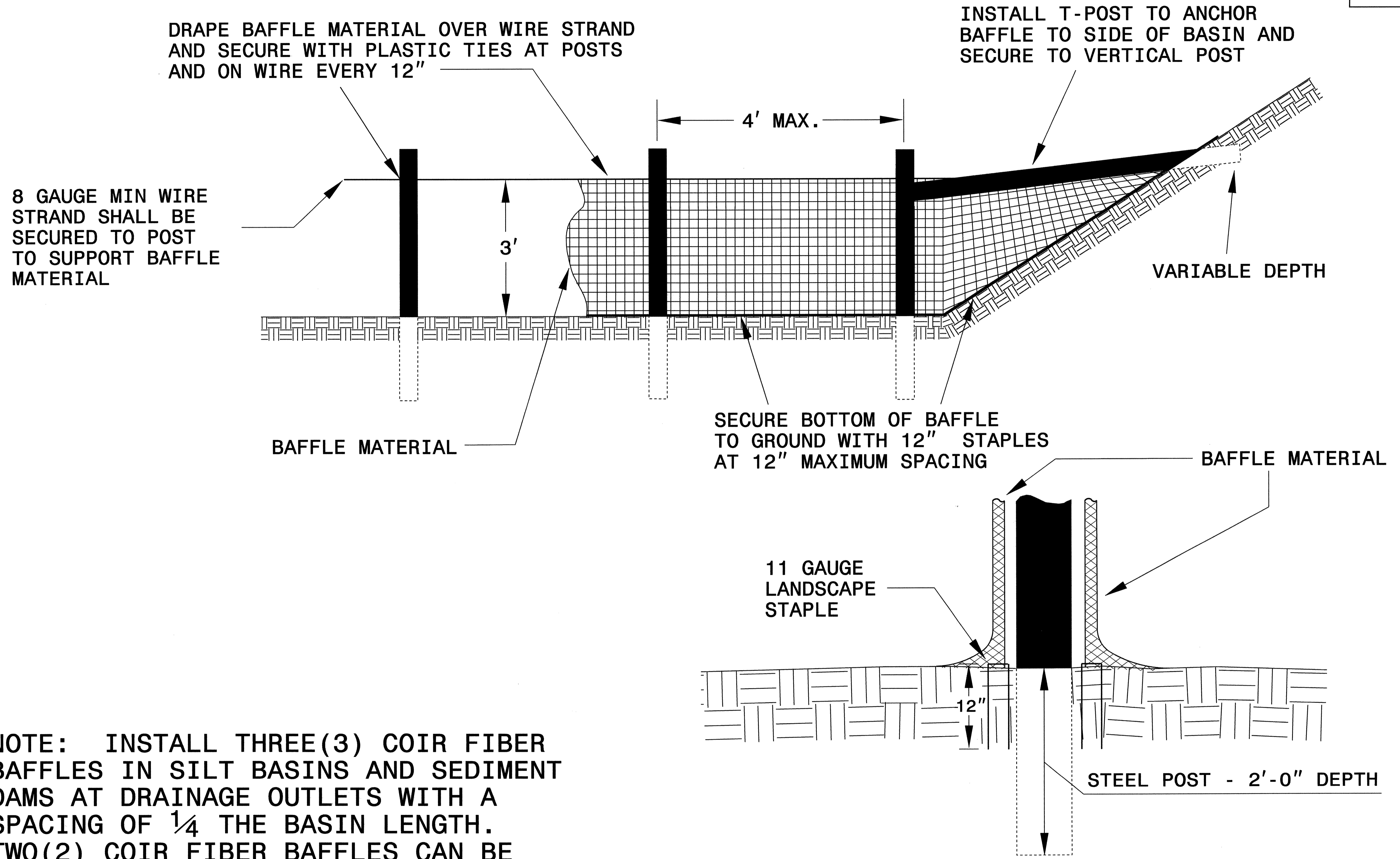
**CROSS SECTION TRAPEZOIDAL DITCH**



**ELEVATION VIEW**

PROJECT REFERENCE NO. B-4281	SHEET NO. EC-2A
RW SHEET NO.	
ROADWAY DESIGN ENGINEER	HYDRAULICS ENGINEER

# COIR FIBER BAFFLE DETAIL



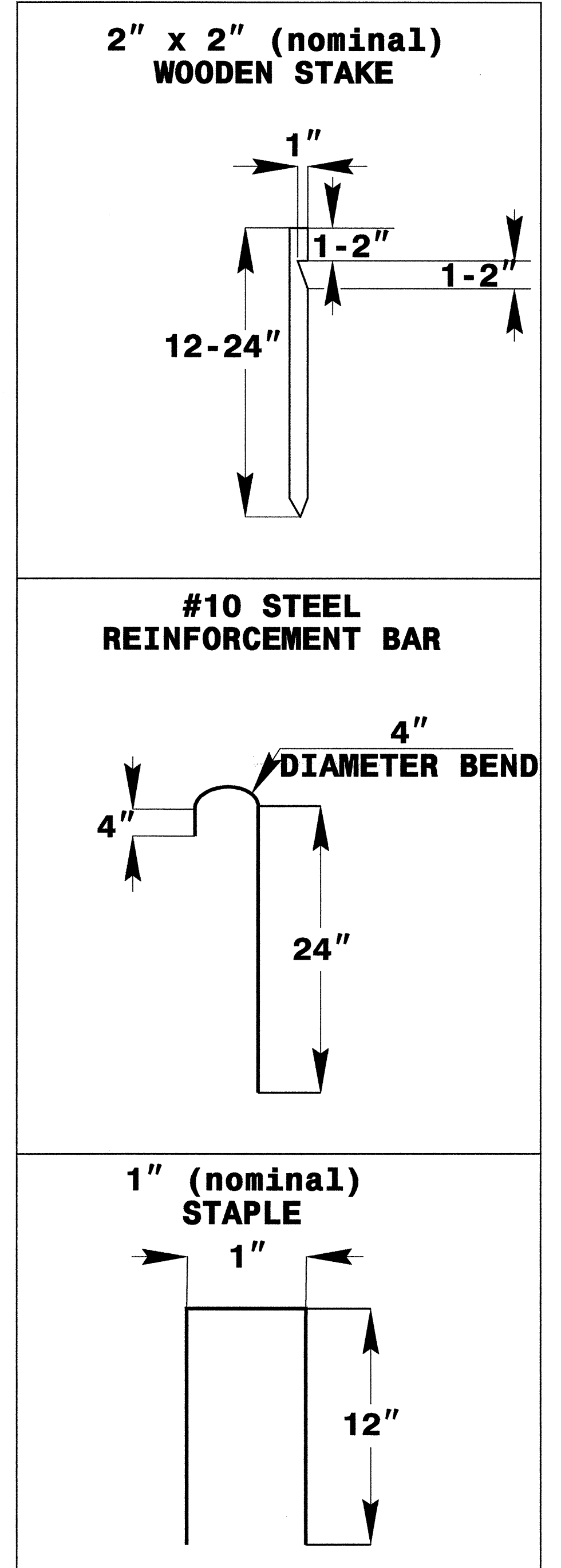
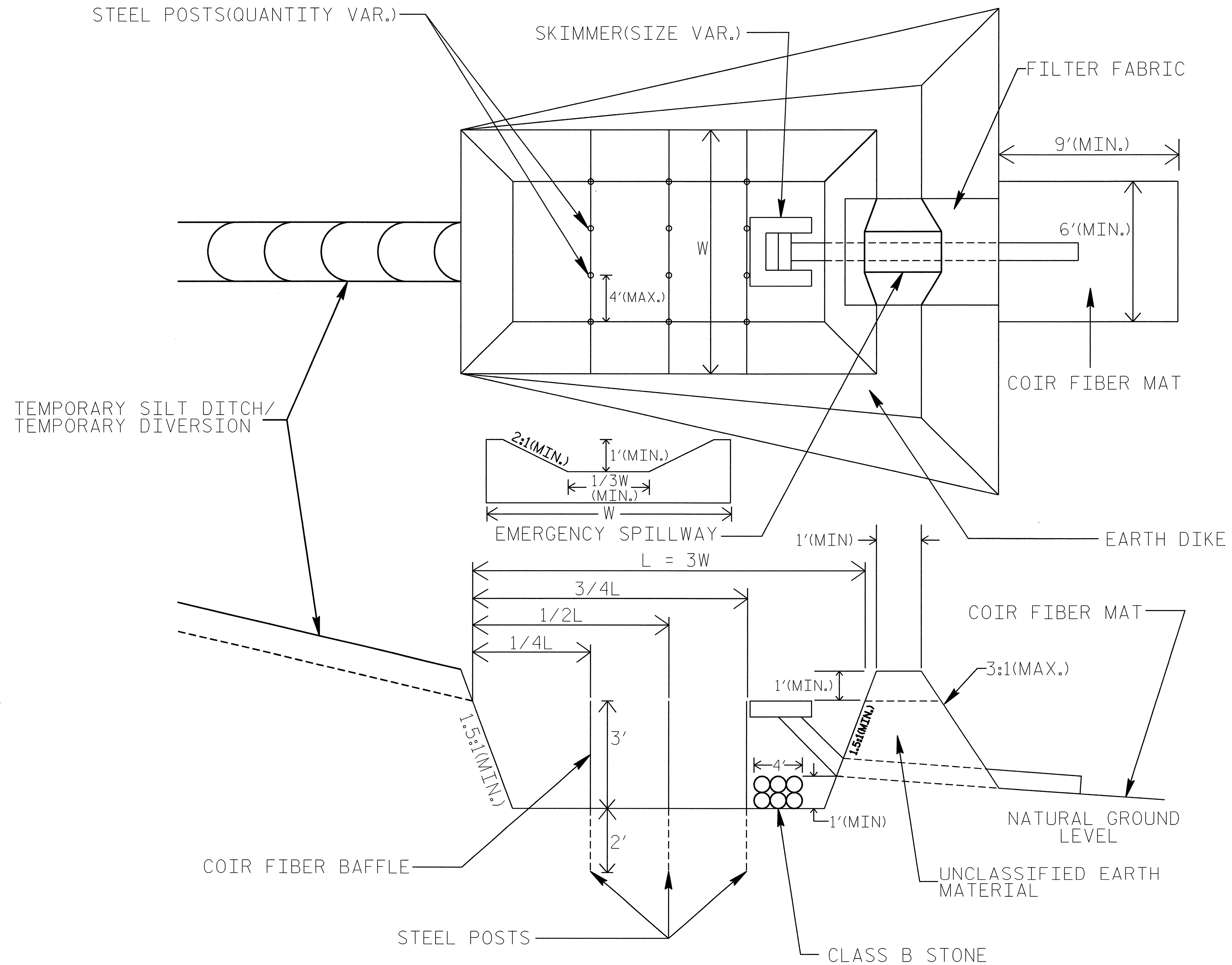
NOTE: INSTALL THREE(3) COIR FIBER BAFFLES IN SILT BASINS AND SEDIMENT DAMS AT DRAINAGE OUTLETS WITH A SPACING OF  $\frac{1}{4}$  THE BASIN LENGTH. TWO(2) COIR FIBER BAFFLES CAN BE INSTALLED IN SILT BASINS AND DAMS LESS THAN 20 FT. IN LENGTH WITH A SPACING OF  $\frac{1}{3}$  THE BASIN LENGTH.

BAFFLE MATERIAL SHALL BE SECURED TO THE BOTTOM AND SIDES OF BASIN USING 12" LANDSCAPE STAPLES



# SKIMMER BASIN WITH BAFFLES DETAIL

PROJECT REFERENCE NO. B-4281	SHEET NO. EC-2B
RW SHEET NO.	
ROADWAY DESIGN ENGINEER	HYDRAULICS ENGINEER



**COIR FIBER MAT ANCHOR OPTIONS**

- NOTES:**
1. SEED AND PLACE MATTING FOR EROSION CONTROL ON SIDESLOPES.
  2. LIMIT EARTH DIKE HEIGHT TO 5 FT.

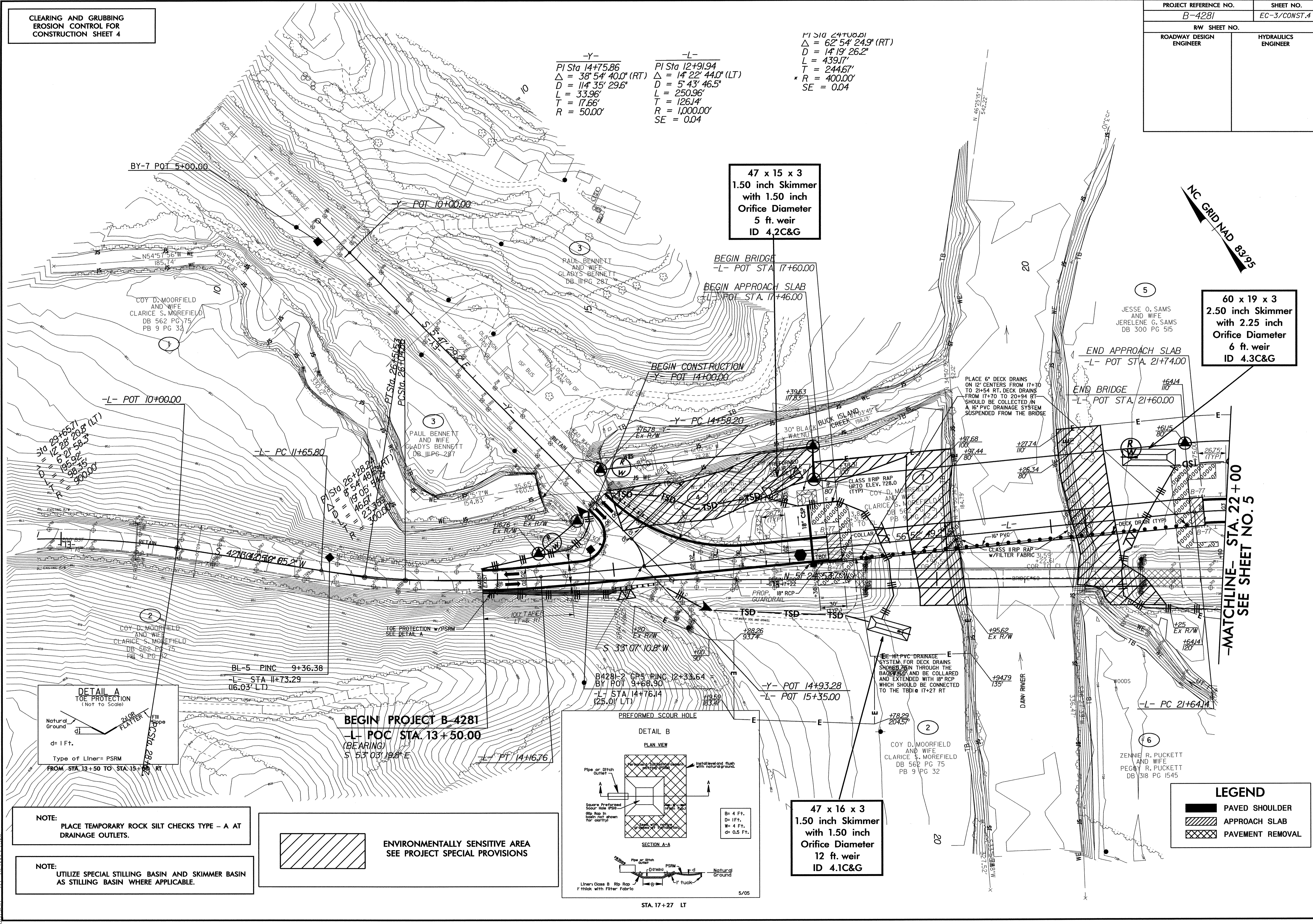


PROJECT REFERENCE NO. B-4281	SHEET NO. EC-3/CONST.4
RW SHEET NO.	
ROADWAY DESIGN ENGINEER	HYDRAULICS ENGINEER

$\Delta = 62^{\circ}54'24.9''$  (RT)  
 $D = 14'19'26.2''$   
 $L = 439.17'$   
 $T = 244.67'$   
 $R = 400.00'$   
 $SE = 0.04$

$\Delta = 38^{\circ}54'40.0''$  (RT)  
 $D = 114'35'29.6''$   
 $L = 33.96'$   
 $T = 17.66'$   
 $R = 50.00'$

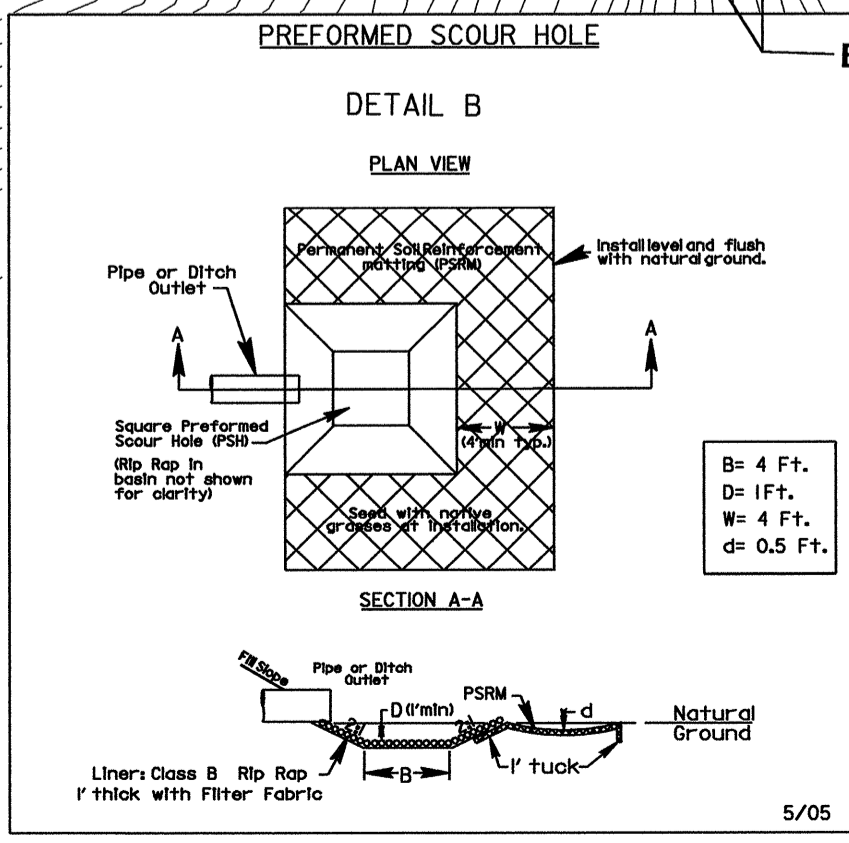
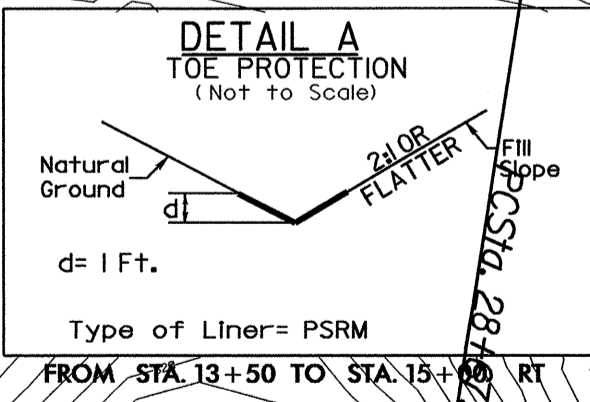
$\Delta = 14^{\circ}22'44.0''$  (LT)  
 $D = 5'43'46.5''$   
 $L = 250.96'$   
 $T = 126.14'$   
 $R = 1,000.00'$   
 $SE = 0.04$



47 x 15 x 3  
1.50 inch Skimmer  
with 1.50 inch  
Orifice Diameter  
5 ft. weir  
ID 4.2C&G

60 x 19 x 3  
2.50 inch Skimmer  
with 2.25 inch  
Orifice Diameter  
6 ft. weir  
ID 4.3C&G

47 x 16 x 3  
1.50 inch Skimmer  
with 1.50 inch  
Orifice Diameter  
12 ft. weir  
ID 4.1C&G



NOTE:  
PLACE TEMPORARY ROCK SILT CHECKS TYPE - A AT  
DRAINAGE OUTLETS.

NOTE:  
UTILIZE SPECIAL STILLING BASIN AND SKIMMER BASIN  
AS STILLING BASIN WHERE APPLICABLE.

ENVIRONMENTALLY SENSITIVE AREA  
SEE PROJECT SPECIAL PROVISIONS

LEGEND

	PAVED SHOULDER
	APPROACH SLAB
	PAVEMENT REMOVAL

5/14/99  
 02-JAN-2008 10:46  
 c:\projects\B-4281\env\environmental\design\b4281-rdy-psh\_04.dgn  
 m.laimesch



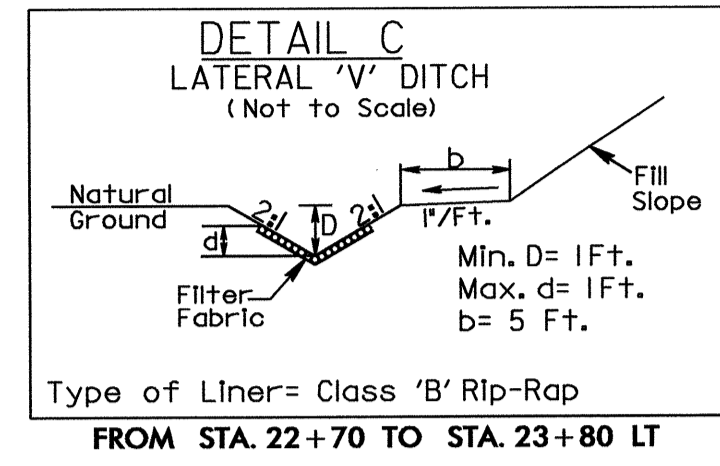




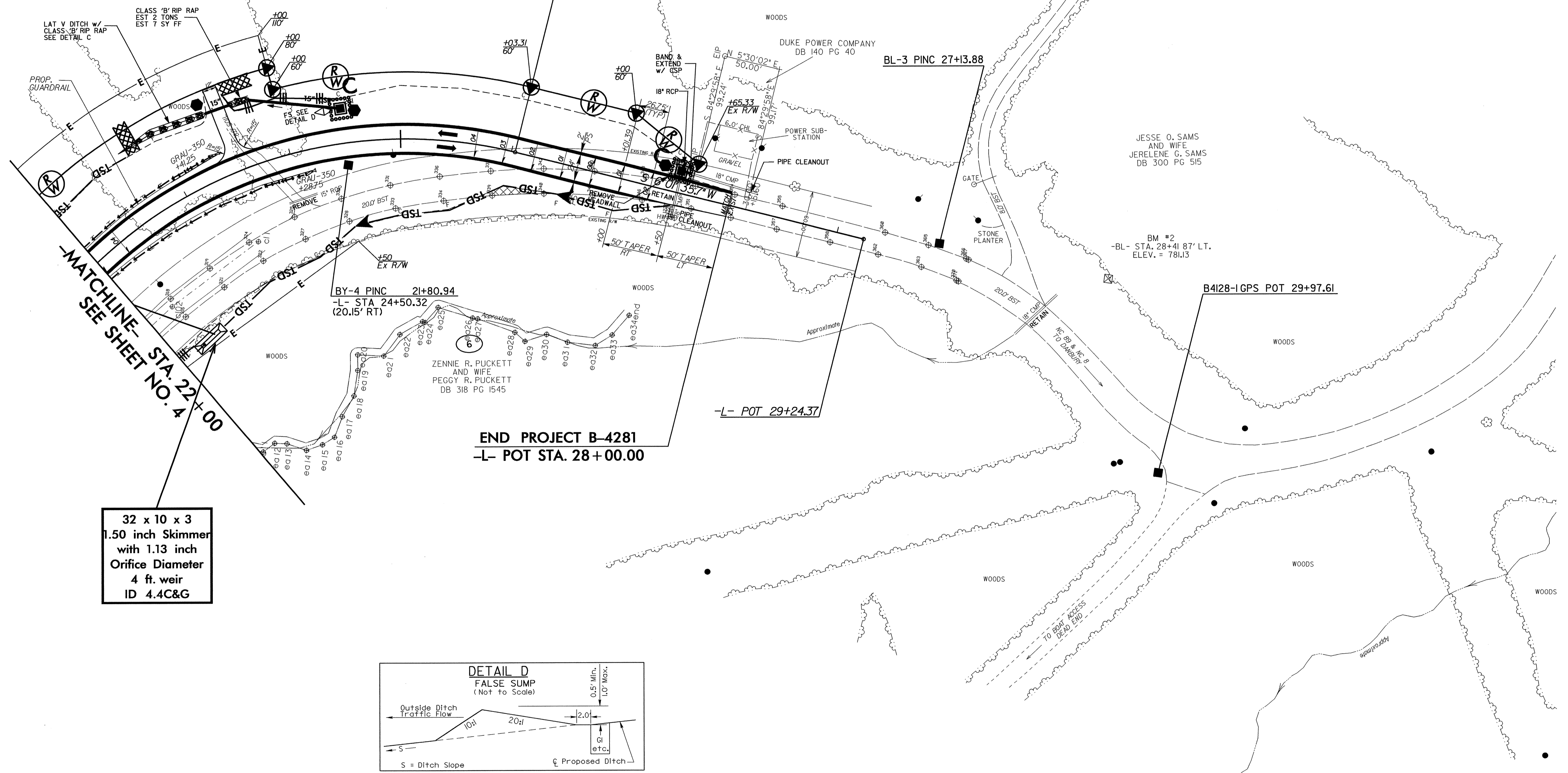


PROJECT REFERENCE NO.	SHEET NO.
B-4281	EC-6/CONST.5
RW SHEET NO.	
ROADWAY DESIGN ENGINEER	HYDRAULICS ENGINEER

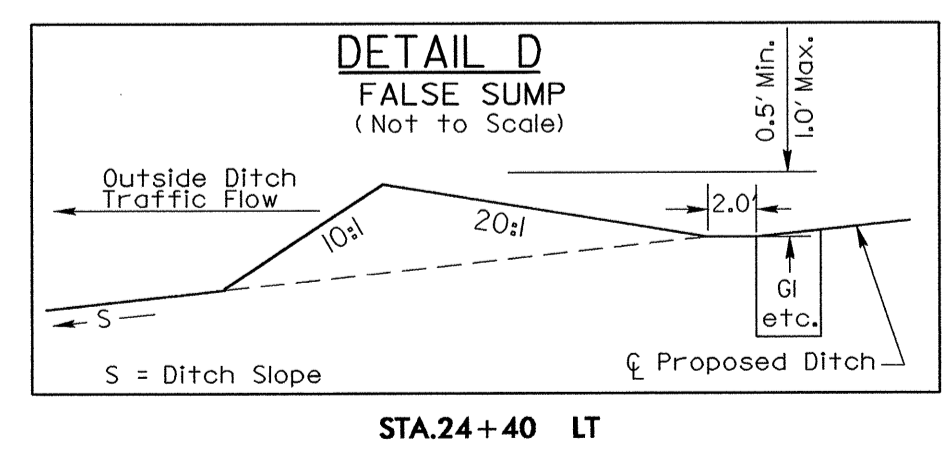
NC GRID NAD 83/95



-L-  
 PI Sta 24+08.81  
 $\Delta = 62^\circ 54' 24.9''$  (RT)  
 $D = 1419' 26.2''$   
 $L = 439.17'$   
 $T = 244.67'$   
 $R = 400.00'$   
 $SE = 0.04$



32 x 10 x 3  
 1.50 inch Skimmer  
 with 1.13 inch  
 Orifice Diameter  
 4 ft. weir  
 ID 4.4C&G



**LEGEND**

	PAVED SHOULDER
	PAVEMENT REMOVAL

5/14/99  
 02-JAN-2008 10:50  
 p:\state-02-jan-2008\design\64281.rdy-psh\_05.dgn