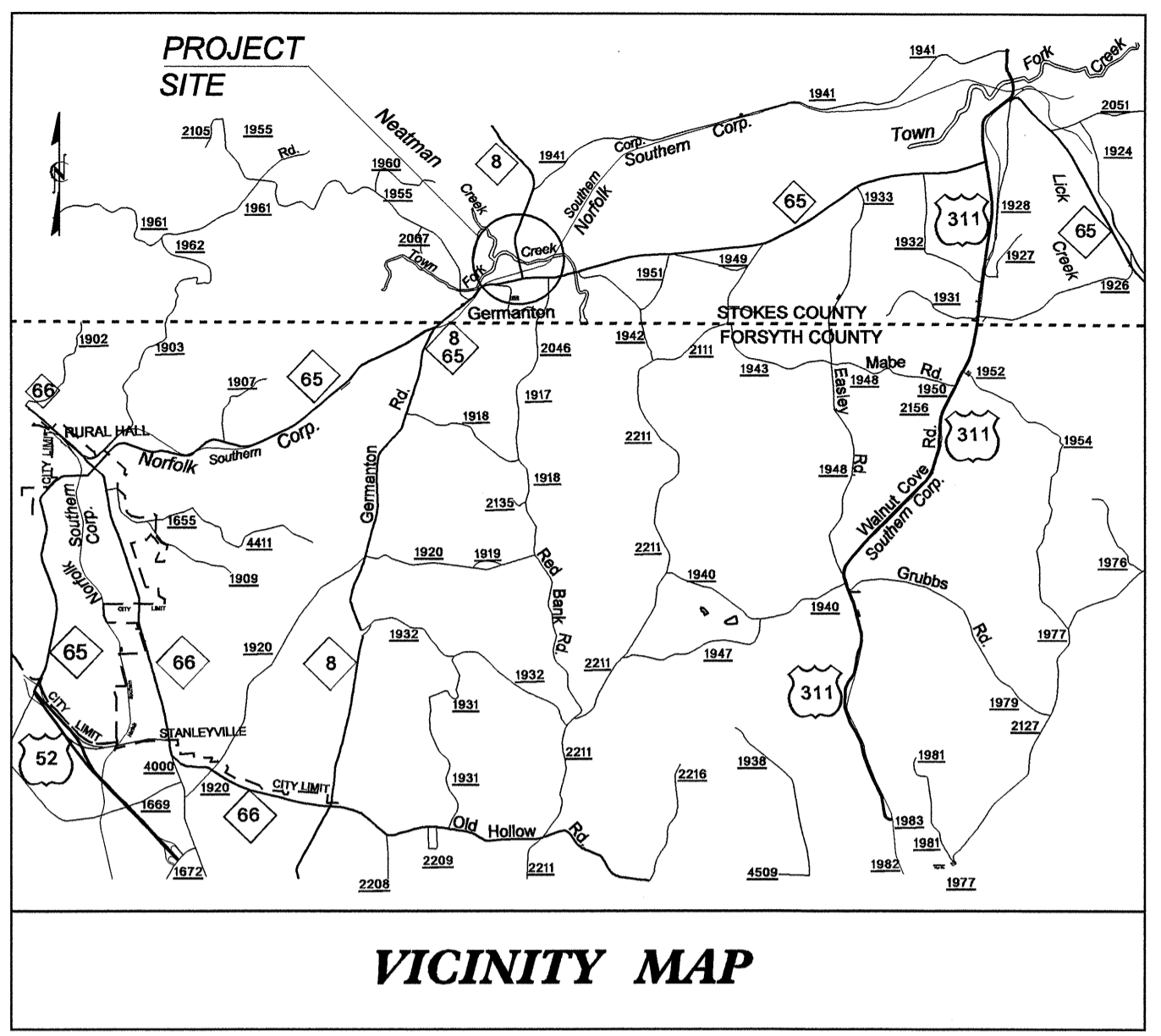
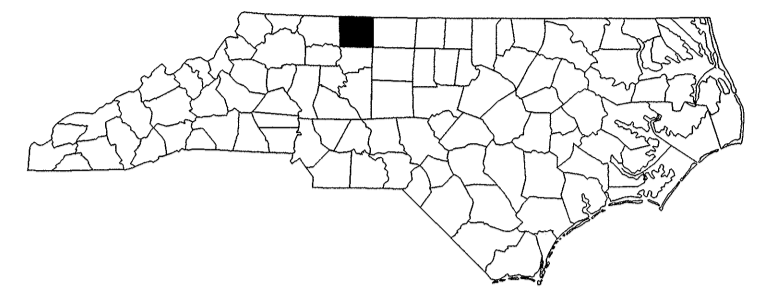


09/08/99

T.I.P. NO.	SHEET NO.
B-4280	UC-1



STATE OF NORTH CAROLINA
DIVISION OF HIGHWAYS

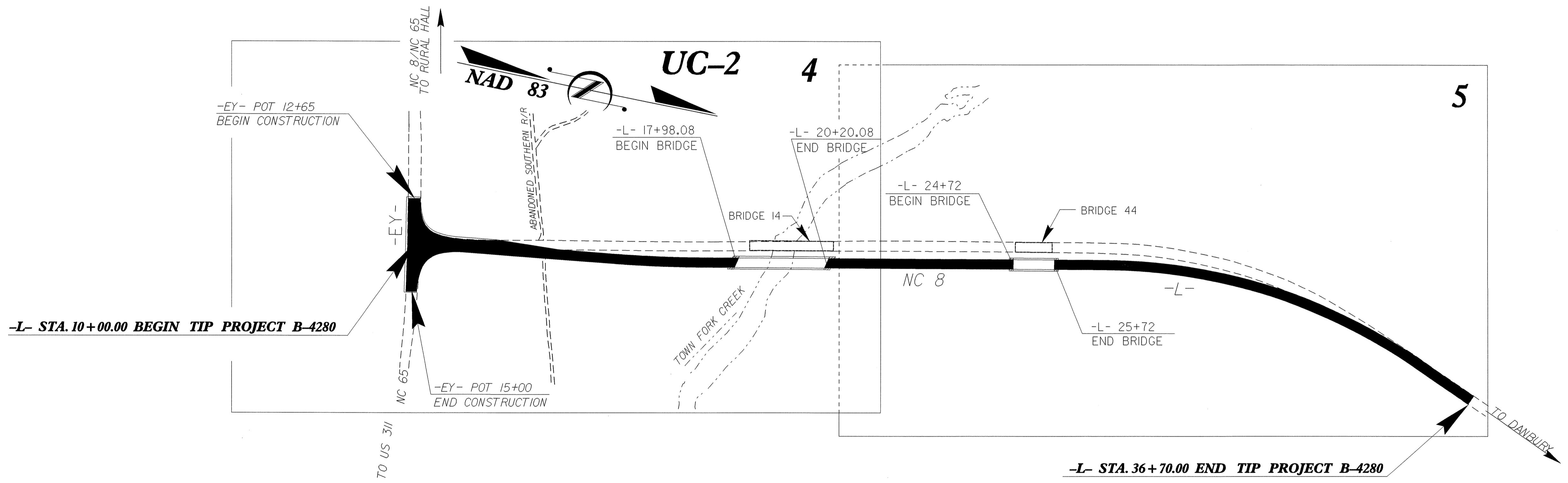
UTILITY CONSTRUCTION PLANS
STOKES COUNTY

LOCATION: BRIDGE 14 AND BRIDGE 44 ON NC 8 OVER TOWN FORK CREEK AND TOWN FORK CREEK OVERFLOW

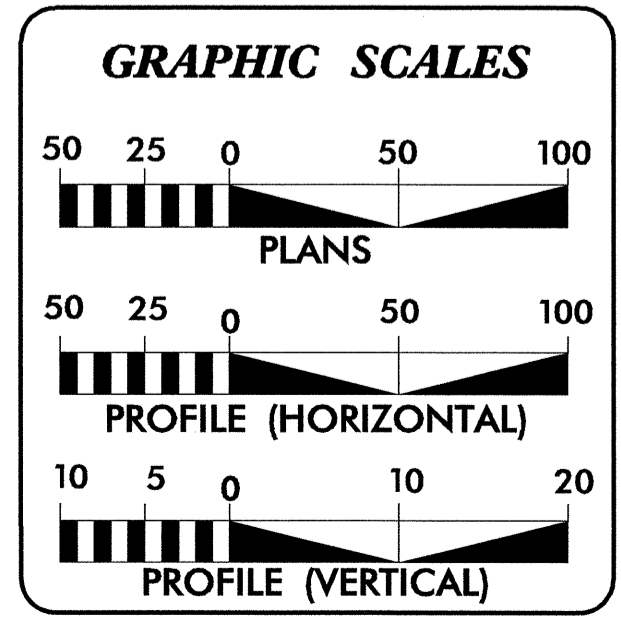
TYPE OF WORK: UTILITY CONSTRUCTION

TIP PROJECT: B-4280

CONTRACT: C201500



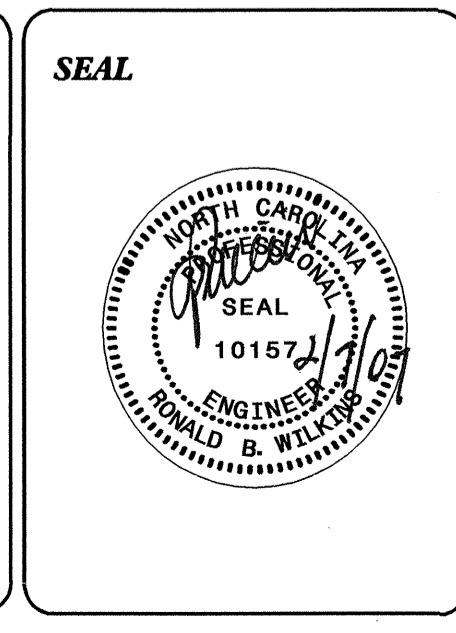
2006 STANDARD SPECIFICATIONS



SHEET NO.	DESCRIPTION
UC-1	TITLE SHEET
UC-2	UTILITY CONSTRUCTION PLAN SHEET

WATER AND SEWER OWNERS ON PROJECT

(1) WATER STOKES COUNTY



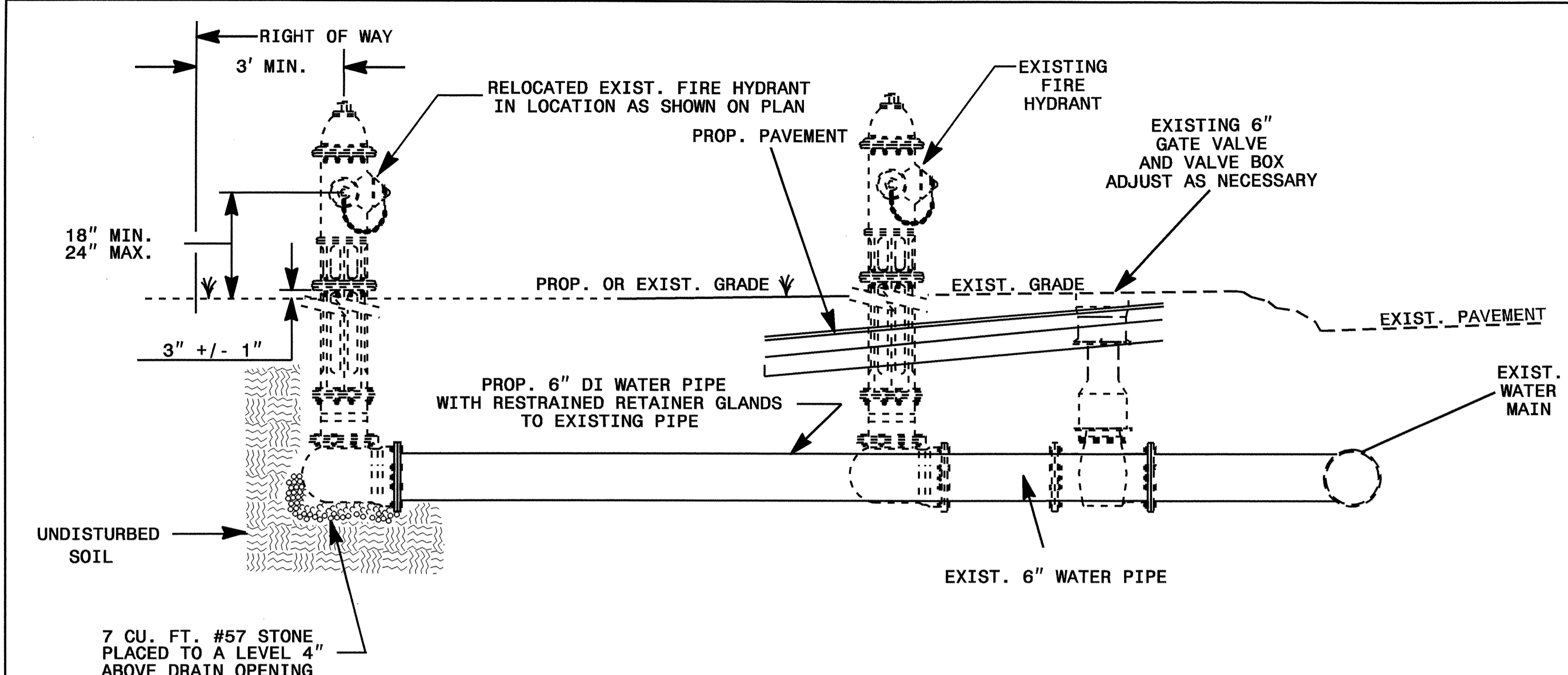
PREPARED IN THE OFFICE OF:
DIVISION OF HIGHWAYS
PROJECT SERVICES
UTILITY SECTION

1591 MAIL SERVICES CENTER
RALEIGH NC 27699-1591
PHONE (919) 250-4128
FAX (919) 250-4119

Roger Worthington, P.E. UTILITIES SECTION ENGINEER
R. B. Wilkins, P.E. UTILITIES SQUAD LEADER PROJECT ENGINEER
John A. Nigro, P.E. UTILITIES PROJECT DESIGNER

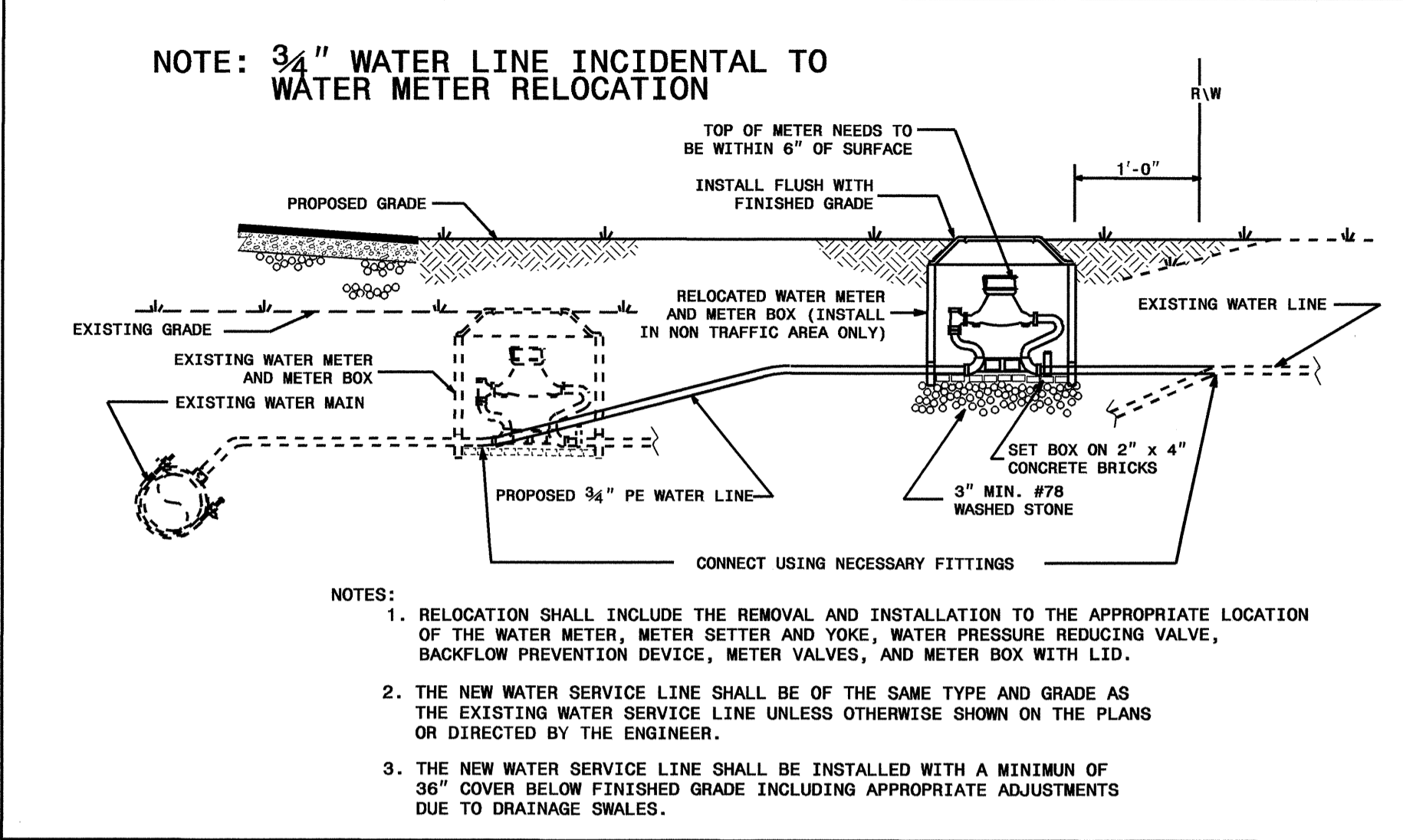
06-FEB-2007 13:49
P:\Utilities\vdg\ut\proj\b4280-ut-title-uc1.psh.dgn
\$\$\$\$\$USERNAME\$\$\$\$\$

UTILITY CONSTRUCTION

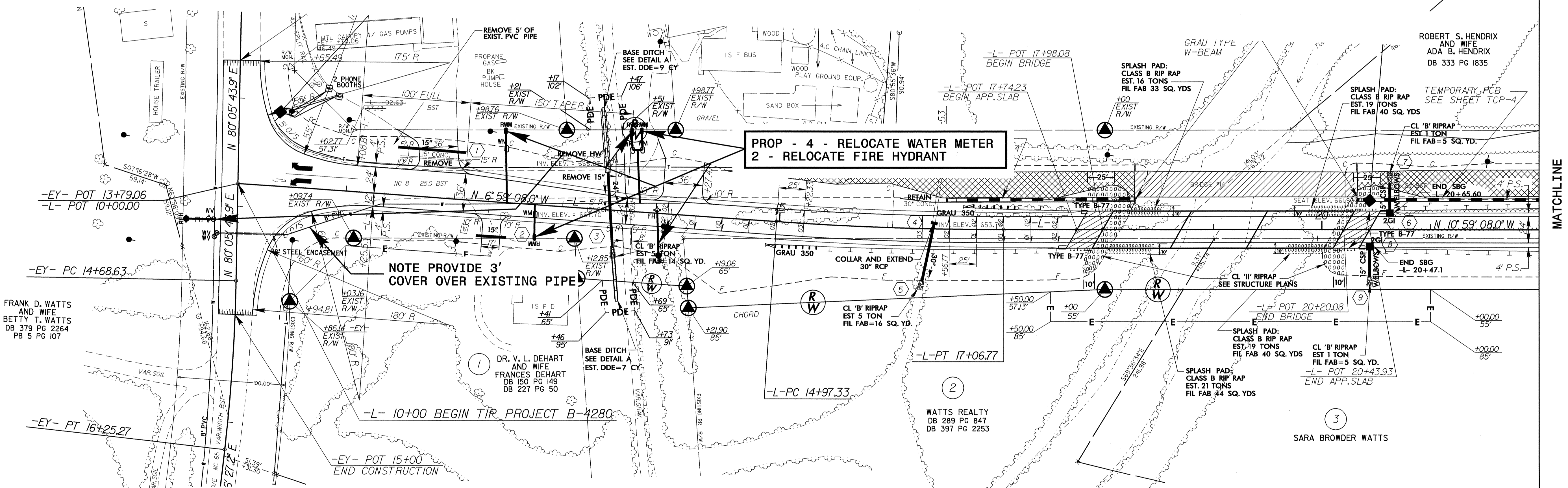


NOTE: 6" DI PIPE AND RESTRAINT INCIDENTAL TO FIRE HYDRANT RELOCATION

FIRE HYDRANT RELOCATION DETAIL



RELOCATE EXISTING WATER METER DETAIL



MATCHLINE

FRANK D. WATTS AND WIFE
BETTY T. WATTS
DB 379 PG 2264
PB 5 PG 107

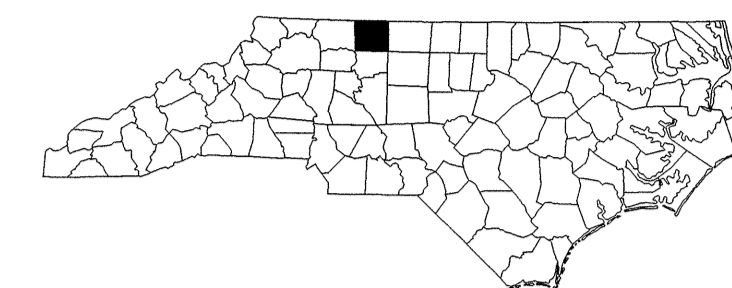
DR. V. L. DEHART AND WIFE
FRANCES DEHART
DB 150 PG 149
DB 227 PG 50

WATTS REALTY
DB 289 PG 847
DB 397 PG 2253

SARA BROWDER WATTS

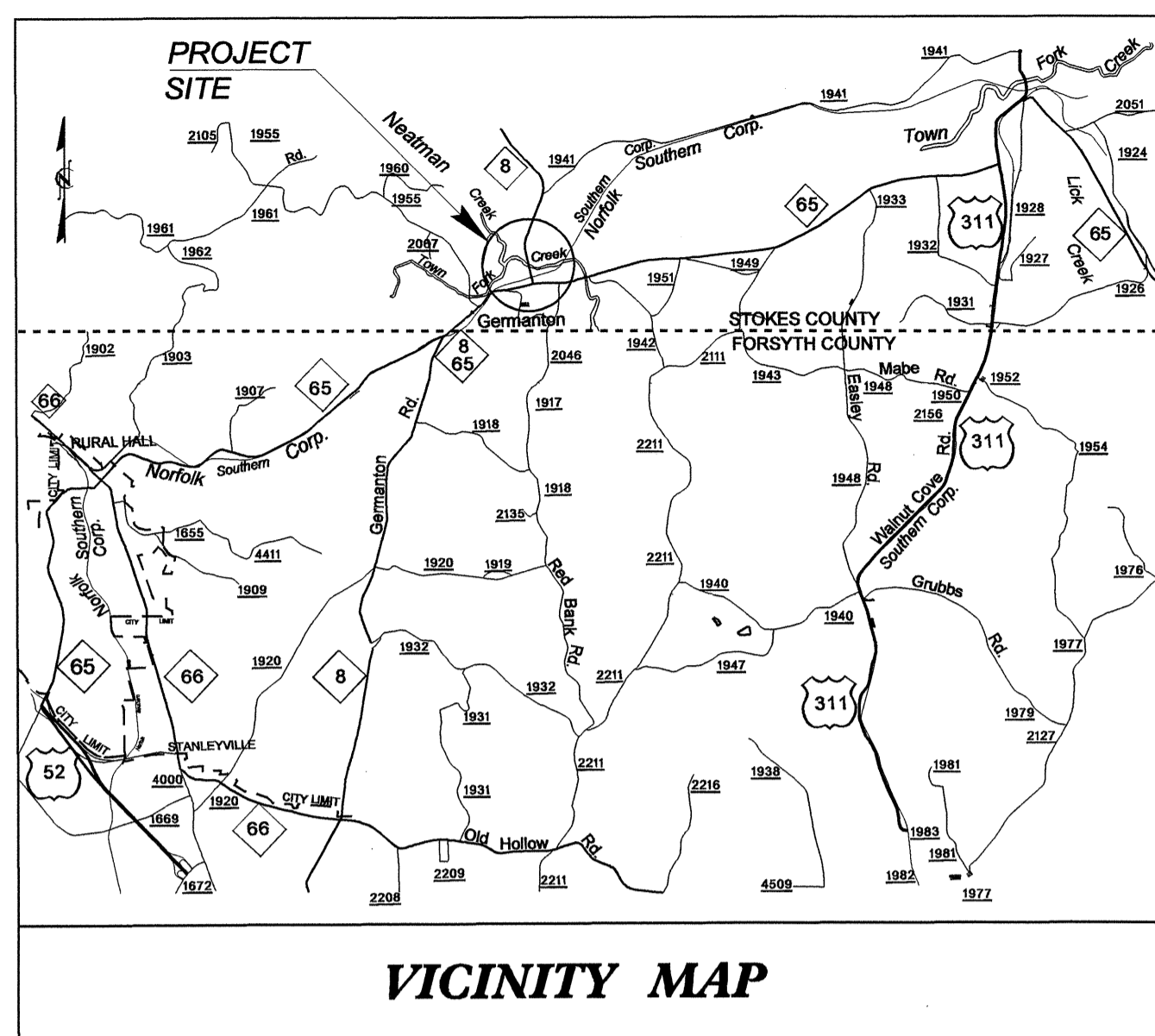
ROBERT S. HENDRIX AND WIFE
ADA B. HENDRIX
DB 333 PG 1835

TEMPORARY PCB
SEE SHEET TCP-4



TIP PROJECT: B-4280

CONTRACT: C201500

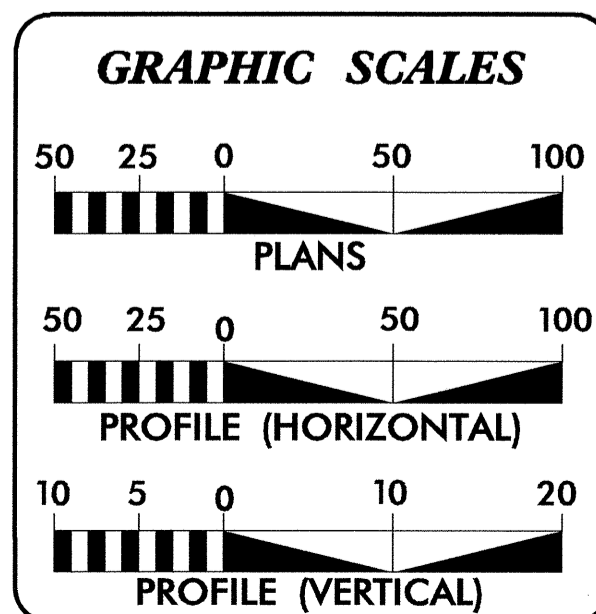
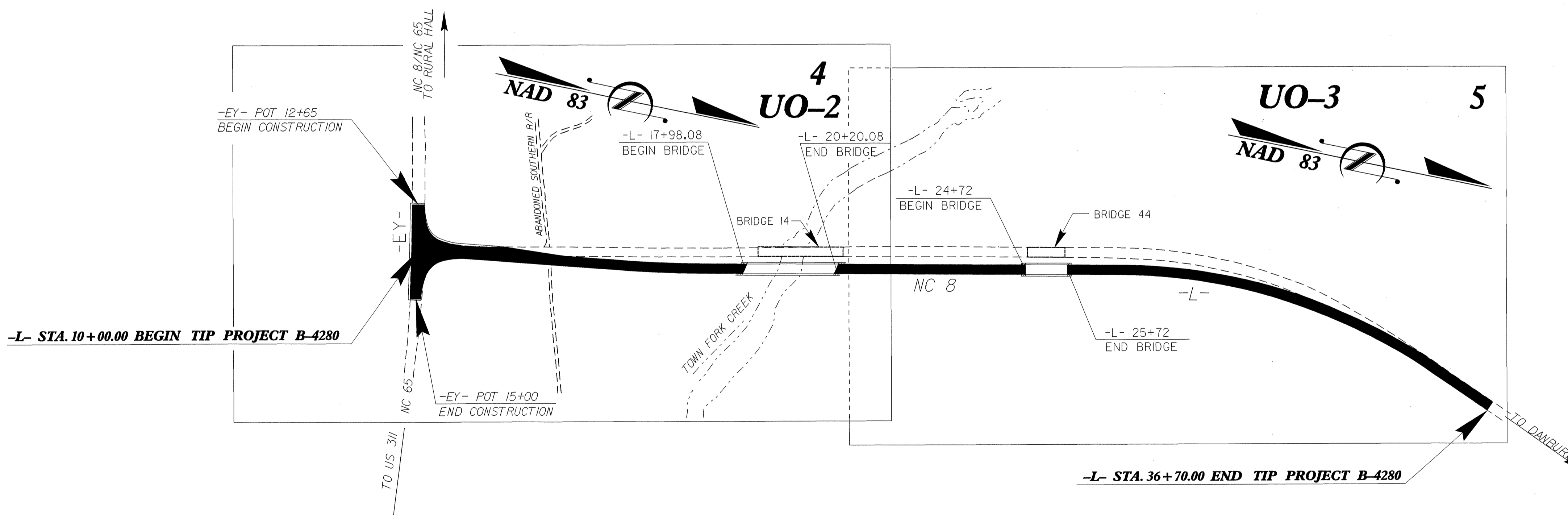


STATE OF NORTH CAROLINA
DIVISION OF HIGHWAYS

UTILITY BY OTHERS PLANS STOKES COUNTY

**LOCATION: BRIDGE 14 AND BRIDGE 44 ON NC 8
OVER TOWN FORK CREEK AND TOWN
FORK CREEK OVERFLOW**

TYPE OF WORK: UTILITES BY OTHERS



INDEX OF SHEETS

SHEET NO.	DESCRIPTION
UO-1	TITLE SHEET
UO-2 THRU UO-3	UTILITY BY OTHERS PLAN SHEETS

- UTILITY OWNERS ON PROJECT**
- (1) SPRINT-TELEPHONE
 - (2) DUKE ENERGY CORP.- POWER (DISTRIBUTION)
 - (3) TIME WARNER CABLE- CABLE TV

PREPARED IN THE OFFICE OF:
**DIVISION OF HIGHWAYS
PROJECT SERVICES
UTILITY SECTION**

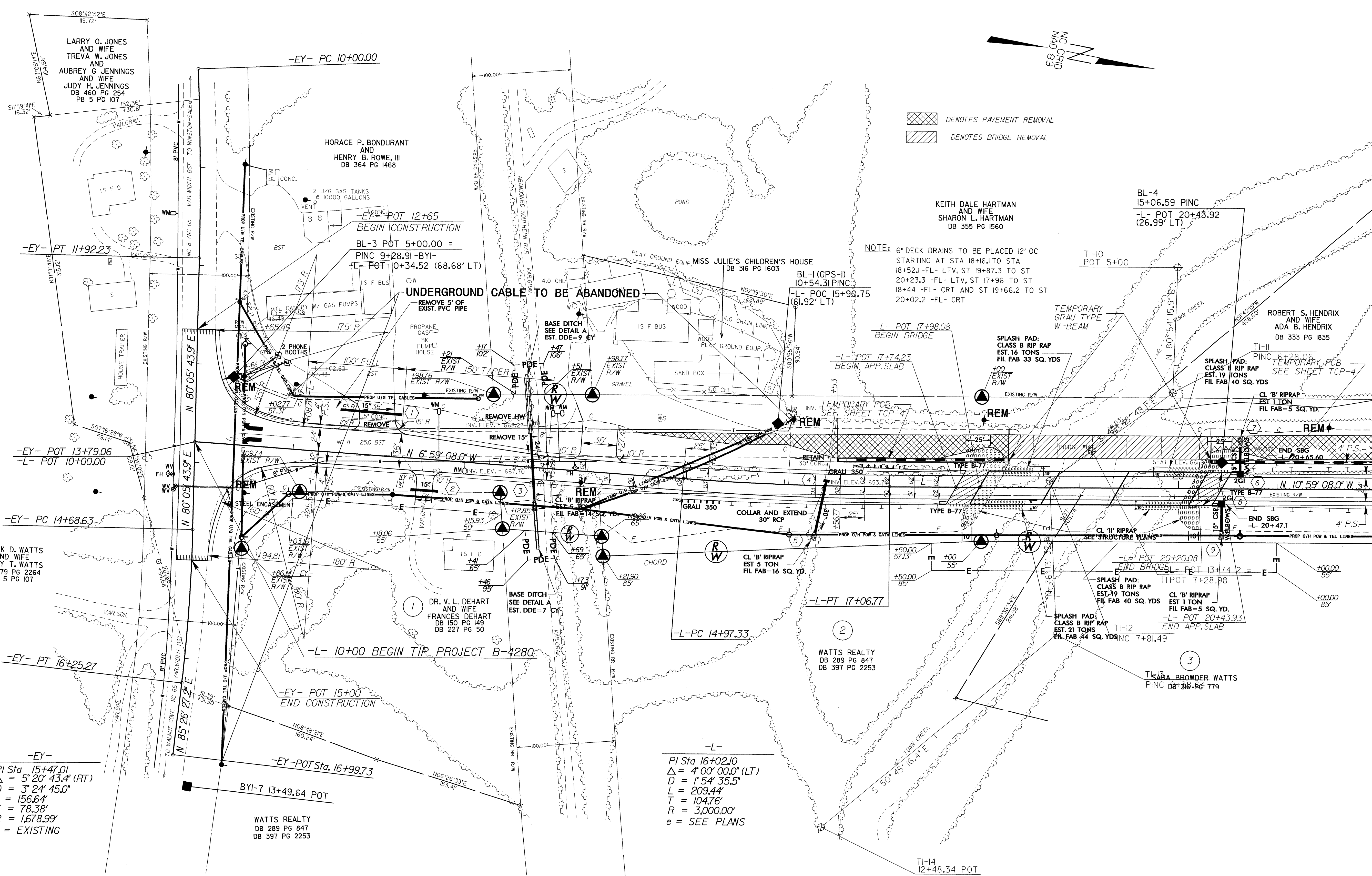
1591 MAIL SERVICES CENTER
RALEIGH NC 27699-1591
PHONE (919) 250-4128
FAX (919) 250-4119

Roger Worthington, P.E. UTILITIES SECTION ENGINEER
R. B. Wilkins, P.E. UTILITIES SQUAD LEADER PROJECT ENGINEER
John A. Nigro, P.E. UTILITIES PROJECT DESIGNER

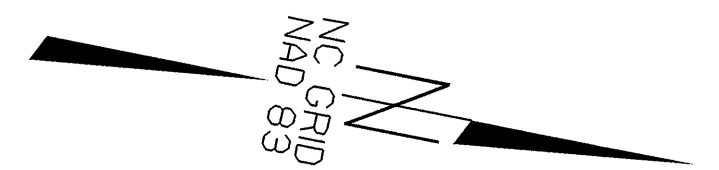
UTILITIES BY OTHERS

NOTE:
ALL PROPOSED UTILITY WORK
SHOWN ON THIS SHEET WILL
BE DONE BY OTHERS

-EY-
PI Sta 10+96.14
Δ = 3° 17' 34.5" (RT)
D = 142' 47.0"
L = 192.23'
T = 96.14'
R = 3,344.66'
e = EXISTING



▨ DENOTES PAVEMENT REMOVAL
▧ DENOTES BRIDGE REMOVAL



NOTE: 6" DECK DRAINS TO BE PLACED 12' OC STARTING AT STA 18+61.1 TO STA 18+52.1 -FL- LTV, ST 19+87.3 TO ST 20+23.3 -FL- LTV, ST 17+96 TO ST 18+44 -FL- CRT AND ST 19+66.2 TO ST 20+02.2 -FL- CRT

-EY-
PI Sta 15+47.01
Δ = 5° 20' 43.4" (RT)
D = 3° 24' 45.0"
L = 156.64'
T = 78.38'
R = 1,678.99'
e = EXISTING

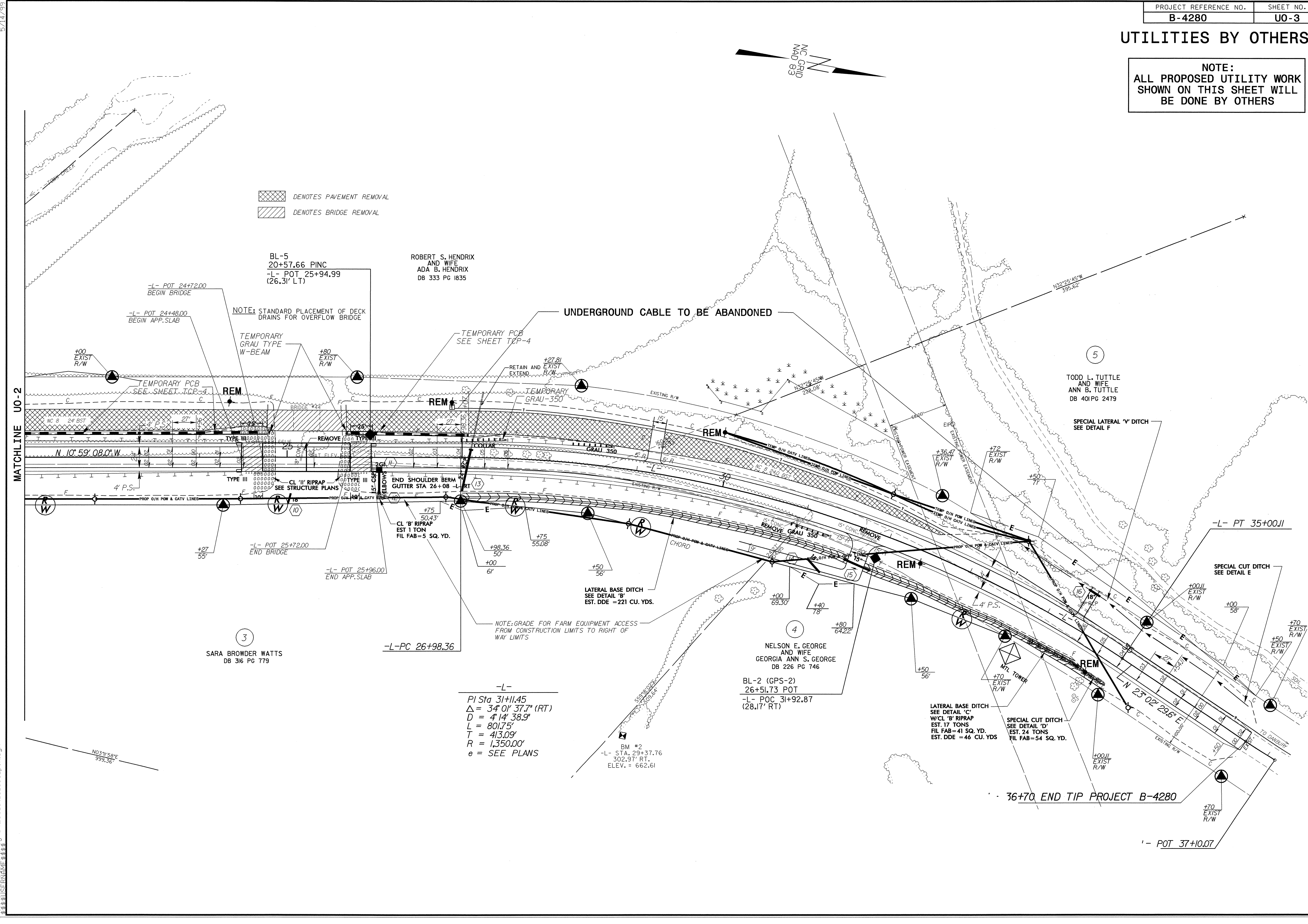
-L-
PI Sta 16+02.10
Δ = 4° 00' 00.0" (LT)
D = 1° 54' 35.5"
L = 209.44'
T = 104.76'
R = 3,000.00'
e = SEE PLANS

5/14/99
06-FEB-2007 10:46
r:\v\4\4\06-FEB-2007 10:46
B-4280-ut-4-uc2-pshdgn

MATCHLINE UO-3

UTILITIES BY OTHERS

NOTE:
ALL PROPOSED UTILITY WORK
SHOWN ON THIS SHEET WILL
BE DONE BY OTHERS



DENOTES PAVEMENT REMOVAL
 DENOTES BRIDGE REMOVAL

BL-5
20+57.66 PINC
-L- POT 25+94.99
(26.31' LT)

ROBERT S. HENDRIX
AND WIFE
ADA B. HENDRIX
DB 333 PG 1835

UNDERGROUND CABLE TO BE ABANDONED

5
TODD L. TUTTLE
AND WIFE
ANN B. TUTTLE
DB 40 PG 2479

3
SARA BROWDER WATTS
DB 316 PG 779

-L-PC 26+98.36

4
NELSON E. GEORGE
AND WIFE
GEORGIA ANN S. GEORGE
DB 226 PG 746

BL-2 (GPS-2)
26+51.73 POT
-L- POC 31+92.87
(28.17' RT)

LATERAL BASE DITCH
SEE DETAIL 'C'
W/CL 'B' RIPRAP
EST. 17 TONS
FIL FAB=41 SQ. YD.
EST. DDE=46 CU. YDS

SPECIAL CUT DITCH
SEE DETAIL 'D'
EST. 24 TONS
FIL FAB=54 SQ. YD.

-L-
PI Sta 31+11.45
 $\Delta = 34' 01" 37.7" (RT)$
 $D = 4' 14" 38.9"$
 $L = 801.75'$
 $T = 413.09'$
 $R = 1,350.00'$
 $e = \text{SEE PLANS}$

BM #2
-L- STA. 29+37.76
302.97' RT.
ELEV. = 662.61

36+70 END TIP PROJECT B-4280

-L- POT 37+10.07

5/14/99
 06-FEB-2007 10:48
 N:\ut\105\B-4280\ut.5_uo3_psh.dgn