



NC DEPARTMENT OF TRANSPORTATION
DIVISION OF HIGHWAYS
BRIDGE MAINTENANCE UNIT

ATTENTION

BRIDGE INSPECTION REPORT

INSPECTION TYPE: Routine Inspection

COUNTY CUMBERLAND BRIDGE NUMBER 250155 INSPECTION CYCLE 2 YRS
ROUTE SR1813 ACROSS 195 M.P. 0

LOCATION 0.8 MI.E.JCT.US 301

SUPERSTRUCTURE REINFORCED CONCRETE DECK ON I-BEAMS.

SUBSTRUCTURE E.BTS&INT.BTS:RC CAPS ON RC PILES

SPANS 2@68'6;2@71'6

LONGITUDE 78° 41' 51.5"

LATITUDE 35° 10' 35.8"

PRESENT CONDITION FAIR

INVENTORY RATING HS-20

INSPECTION DATE 03/15/2007

OPERATING RATING HS-33

PRESENT POSTING Not Posted

PROPOSED POSTING N.P.

COMPUTER UPDATE 6-28-07

ANALYSIS DATE 5-24-07

POSTING LETTER DATE _____

SUFFICIENCY RATING _____

OTHER SIGNS PRESENT 4 LOW CLEARANCE, 6 DELINEATORS



LOOKING EAST

SIGN NOTICE
ISSUED FOR

NUMBERED
REQUIRED

<u>No</u>	WEIGHT LIMIT	_____
<u>No</u>	DELINEATORS	_____
<u>No</u>	NARROW BRIDGE	_____
<u>No</u>	ONE LANE BRIDGE	_____
<u>No</u>	LOW CLEARANCE	_____

NATIONAL BRIDGE INVENTORY-----STRUCTURE INVENTORY AND APPRAISAL

IDENTIFICATION				CLASSIFICATION		CODE
(1) STATE NAME -NORTH CAROLINA	BRIDGE	250155		SUFFICIENCY RATING =		88
(8) STRUCTURE NUMBER(FEDERAL)		00000000510155		STATUS =	Not Deficient	
INVENTORY ROUTE (ON/UNDER) - ON		131018130				
(2) STATE HIGHWAY DEPARTMENT DISTRICT		6				
(3) COUNTY CODE	51	(4) PLACE CODE		(112)NBIS BRIDGE SYSTEM -		YES
(6) FEATURE INTERSECTED -	195			(104)HIGHWAY SYSTEM	NON NHS Route	0
(7) FACILITY CARRIED	SR1813			(26) FUNCTIONAL CLASS -	Local	09
(9) LOCATION	0.8 MI.E.JCT.US 301			(100)STRAHNET HIGHWAY -	Not a STRAHNET Route	0
(11)MILEPOINT		0		(101)PARALLEL STRUCTURE -	No Parallel Structure	N
(16)LAT	35° 10' 35.8"	(17)LONG	78° 41' 51.5"	(102)DIRECTION OF TRAFFIC -	2-way Traffic	2
(98)BORDER BRIDGE STATE CODE		PCT SHARE		(103)TEMPORARY STRUCTURE -	Not Temporary	
(99)BORDER BRIDGE STRUCTURE NO				(110)DESIGNATED NATIONAL NETWORK -	Not Part of	0
				(20) TOLL	On Free Road	3
				(31) MAINTAIN -	State Highway Agency	01
				(22) OWNER -	State Highway Agency	01
				(37) HISTORICAL SIGNIFICANCE -	Not Eligible	5
STRUCTURE TYPE AND MATERIAL				CONDITION		CODE
(43) STRUCTURE TYPE MAIN:	Steel			(58) DECK		6
TYPE -	Stringer Multibeam or Girder	CODE	302	(59) SUPERSTRUCTURE		8
(44) STRUCTURE TYPE APPR :				(60) SUBSTRUCTURE		6
TYPE -		CODE		(61) CHANNEL & CHANNEL PROTECTION		N
(45) NUMBER OF SPANS IN MAIN UNIT			4	(62) CULVERTS		N
(46) NUMBER OF APPROACH SPANS			0			
(107)DECK STRUCTURE TYPE -	Concrete cast-in-place	CODE	1	LOAD RATING AND POSTING		CODE
(108)WEARING SURFACE / PROTECTIVE SYSTEM :				(31) DESIGN LOAD	H 15	2
(A) TYPE OF WEARING SURFACE -	Concrete	CODE	1	(64) OPERATING RATING -	HS-33	160
(B) TYPE OF MEMBRANE	None	CODE	0	(66) INVENTORY RATING -	HS-20	136
(C) TYPE OF DECK PROTECTION -	None	CODE	0	(70) BRIDGE POSTING -	Posting Required	5
				(41) STRUCTURE OPEN, POSTED ,OR CLOSED		A
				DESCRIPTION -	Open, No Restriction	
AGE AND SERVICE				APPRAISAL		CODE
(27) YEAR BUILT			1957	(67) STRUCTURAL EVALUATION		6
(106)YEAR RECONSTRUCTED			0	(68) DECK GEOMETRY		5
(42) TYPE OF SERVICE : ON -	Highway			(69) UNDERCLEARANCES,VERTI & HORIZ		2
UNDER - Highway		CODE	11	(71) WATERWAY ADEQUACY		N
(28) LANES: ON STRUCTURE	2 UNDER STRUCTURE		4	(72) APPROACH ROADWAY ALIGNMENT		8
(29) AVERAGE DAILY TRAFFIC			130	(36) TRAFFIC SAFETY FEATURES		0010
(30) YEAR OF ADT	2004	(109) TRUCK ADT PCT	6 %	(11)SCOUR CRITICAL BRIDGES		N
(19) BYPASS OR DETOUR LENGTH			3 MI	PROPOSED IMPROVEMENTS		CODE
				(75) TYPE OF WORK -		311
GEOMETRIC DATA				(76) LENGTH OF STRUCTURE IMPROVEMENT		282 FT
(48) LENGTH OF MAXIMUM SPAN			72 FT	(94) BRIDGE IMPROVEMENT COST		\$603,000
(49) STRUCTURE LENGTH			282 FT	(95) ROADWAY IMPROVEMENT COST		\$151,000
(50)CURB OR SIDEWALK: LEFT	1.1 FT RIGHT		1.1 FT	(96) TOTAL PROJECT COST		\$905,000
(51) BRIDGE ROADWAY WIDTH CURB TO CURB			24.0 FT	(97) YEAR OF IMPROVEMENT COST ESTIMATE		207
(52) DECK WIDTH OUT TO OUT			26.5 FT	(114)FUTURE ADT	260	(115) YEAR FUTURE ADT
(32) APPROACH ROADWAY WIDTH (W/SHOULDERS)			18.0 FT			2025
(33) BRIDGE MEDIAN -	No Median	CODE	0	INSPECTIONS		
(34) SKEW	42° (35) STRUCTURE FLARED		NO	(90) INSPECTION DATE		03/15/2007
(10) INVENTORY ROUTE MIN VERT CLEAR			99 FT 99 IN	(92) CRITICAL FEATURE INSPECTION :		(93) CFI DATE
(47) INVENTORY ROUTE TOTAL HORIZ CLEAR			24.0 FT	A) FRACTURE CRIT DETAIL -	NO	A)
(53) MIN VERT CLEAR OVER BRIDGE RDWY			99 FT 99 IN	B) UNDERWATER INSP -	NO	B)
(54) MIN VERT UNDERCLEAR REF	Highway		14 FT 10 IN	C) OTHER SPECIAL INSP	NO	C)
(55) MIN LAT UNDERCLEAR RT REF	Highway		9.5 FT	SCOUR		
(56) MIN LAT UNDERCLEAR LT REF -			17.2 FT			
NAVIGATION DATA						
(38) NAVIGATION CONTROL -	Not Applicable	CODE	N			
(111)PIER PROTECTION -	Not Applicable	CODE				
(39) NAVIGATION VERTICAL CLEARANCE			0			
(116)VERT - LIFT BRIDGE NAV MIN VERT CLEAR						
(40) NAVIGATION HORIZONTAL CLEARANCE			0			

NATIONAL BRIDGE INVENTORY----- STRUCTURE INVENTORY AND APPRAISAL

IDENTIFICATION				CLASSIFICATION		CODE
(1) STATE NAME -NORTH CAROLINA	BRIDGE	250155		SUFFICIENCY RATING =		88
(8) STRUCTURE NUMBER(FEDERAL)		00000000510155		STATUS =	Not Deficient	
INVENTORY ROUTE (ON/UNDER) - UNDER		211000950				
(2) STATE HIGHWAY DEPARTMENT DISTRICT		6				
(3) COUNTY CODE	51	(4) PLACE CODE		(112)NBIS BRIDGE SYSTEM -		YES
(6) FEATURE INTERSECTED -	I95			(104)HIGHWAY SYSTEM	NHS Route	1
(7) FACILITY CARRIED	SR1813			(26) FUNCTIONAL CLASS -	Arterial - Interstate	01
(9) LOCATION	0.8 MI.E.JCT.US 301			(100)STRAHNET HIGHWAY -	Interstate STRAHNET Route	1
(11)MILEPOINT			0	(101)PARALLEL STRUCTURE -	No Parallel Structure	N
(16)LAT	35° 10' 35.8"	(17)LONG	78° 41' 51.5"	(102)DIRECTION OF TRAFFIC -	2-way Traffic	2
(98)BORDER BRIDGE STATE CODE		PCT SHARE		(103)TEMPORARY STRUCTURE -	Not Temporary	
(99)BORDER BRIDGE STRUCTURE NO				(110)DESIGNATED NATIONAL NETWORK -	Is Part of	
				(20) TOLL	On Free Road	3
				(31) MAINTAIN -	State Highway Agency	01
				(22) OWNER -	State Highway Agency	01
				(37) HISTORICAL SIGNIFICANCE -	Not Eligible	5
STRUCTURE TYPE AND MATERIAL				CONDITION		CODE
(43) STRUCTURE TYPE MAIN:	Steel			(58) DECK		6
TYPE -	Stringer Multibeam or Girder	CODE	302	(59) SUPERSTRUCTURE		8
(44) STRUCTURE TYPE APPR :				(60) SUBSTRUCTURE		6
TYPE -		CODE		(61) CHANNEL & CHANNEL PROTECTION		N
(45) NUMBER OF SPANS IN MAIN UNIT			4	(62) CULVERTS		N
(46) NUMBER OF APPROACH SPANS			0			
(107)DECK STRUCTURE TYPE -	Concrete cast-in-place	CODE	1	LOAD RATING AND POSTING		CODE
(108)WEARING SURFACE / PROTECTIVE SYSTEM :				(31) DESIGN LOAD	H 15	2
(A) TYPE OF WEARING SURFACE -	Concrete	CODE	1	(64) OPERATING RATING -	HS-33	160
(B) TYPE OF MEMBRANE	None	CODE	0	(66) INVENTORY RATING -	HS-20	136
(C) TYPE OF DECK PROTECTION -	None	CODE	0	(70) BRIDGE POSTING -	Posting Required	5
				(41) STRUCTURE OPEN, POSTED ,OR CLOSED		A
				DESCRIPTION -	Open, No Restriction	
AGE AND SERVICE				APPRAISAL		CODE
(27) YEAR BUILT			1957	(67) STRUCTURAL EVALUATION		6
(106)YEAR RECONSTRUCTED			0	(68) DECK GEOMETRY		5
(42) TYPE OF SERVICE : ON -	Highway			(69) UNDERCLEARANCES,VERTI & HORIZ		2
UNDER -	Highway	CODE	11	(71) WATERWAY ADEQUACY		N
(28) LANES: ON STRUCTURE	2 UNDER STRUCTURE		4	(72) APPROACH ROADWAY ALIGNMENT		8
(29) AVERAGE DAILY TRAFFIC			44000	(36) TRAFFIC SAFETY FEATURES		0010
(30) YEAR OF ADT	2004	(109) TRUCK ADT PCT	6 %	(11)SCOUR CRITICAL BRIDGES		N
(19) BYPASS OR DETOUR LENGTH			3 MI	PROPOSED IMPROVEMENTS		CODE
GEOMETRIC DATA				(75) TYPE OF WORK -		311
(48) LENGTH OF MAXIMUM SPAN			72 FT	(76) LENGTH OF STRUCTURE IMPROVEMENT		282 FT
(49) STRUCTURE LENGTH			282 FT	(94) BRIDGE IMPROVEMENT COST		\$603,000
(50)CURB OR SIDEWALK: LEFT	1.1 FT RIGHT		1.1 FT	(95) ROADWAY IMPROVEMENT COST		\$151,000
(51) BRIDGE ROADWAY WIDTH CURB TO CURB			24.0 FT	(96) TOTAL PROJECT COST		\$905,000
(52) DECK WIDTH OUT TO OUT			26.5 FT	(97) YEAR OF IMPROVEMENT COST ESTIMATE		207
(32) APPROACH ROADWAY WIDTH (W/SHOULDERS)			18.0 FT	(114)FUTURE ADT	260	(115) YEAR FUTURE ADT
(33) BRIDGE MEDIAN -	No Median	CODE	0			2025
(34) SKEW	42° (35) STRUCTURE FLARED		NO	INSPECTIONS		CODE
(10) INVENTORY ROUTE MIN VERT CLEAR			15 FT 02 IN	(90) INSPECTION DATE		03/15/2007
(47) INVENTORY ROUTE TOTAL HORIZ CLEAR			44.7 FT	(92) CRITICAL FEATURE INSPECTION :		(93) CFI DATE
(53) MIN VERT CLEAR OVER BRIDGE RDWY			99 FT 99 IN	A) FRACTURE CRIT DETAIL -	NO	A)
(54) MIN VERT UNDERCLEAR REF	Highway		14 FT 10 IN	B) UNDERWATER INSP -	NO	B)
(55) MIN LAT UNDERCLEAR RT REF	Highway		9.5 FT	C) OTHER SPECIAL INSP	NO	C)
(56) MIN LAT UNDERCLEAR LT REF -			17.2 FT	SCOUR		
NAVIGATION DATA						
(38) NAVIGATION CONTROL -	Not Applicable	CODE	N			
(111)PIER PROTECTION -	Not Applicable	CODE				
(39) NAVIGATION VERTICAL CLEARANCE			0			
(116)VERT - LIFT BRIDGE NAV MIN VERT CLEAR						
(40) NAVIGATION HORIZONTAL CLEARANCE			0			

BRIDGE INSPECTION RECORD AND SUMMARY

INSPECTION TYPE Routine Inspection
 BRIDGE NO. 250155 COUNTY CUMBERLAND ROUTE SR1813 OVER I95
 STRUCTURE TYPE REINFORCED CONCRETE DECK ON I-BEAMS.
 ROUTE ORIENTATION W - E SPANS 2@68'6;2@71'6

EVALUATION CODE: 0-2 CRITICAL, 3 & 4 POOR, 5 & 6 FAIR, 7-9 GOOD

INSPECTION ITEM			ITEM 61		
DECK ITEMS		GRADES			
1. WEARING SURFACE			45. CHANNEL & CHANNEL PROT.	a. WATERWAY	
2. DECK NO. OF EA TYPE				b. ALIGNMENT	
SPN GRADE				c. SCOUR	
RATES SI & A ITEM 58				d. SLOPE PROT., RIP-RAP, DIKES, ETC.	
3. RAILING			50. APPROACH ROADWAY CONDITION		
a. CONCRETE			51. APPROACH SLABS		
b. TIMBER			52. PAINT SYSTEM		
c. ALUMINUM			CODE		
d. STEEL			L		
4. CURBS, WHEELGUARDS, PARAPETS, MEDIANS			53. UTILITIES		
5. WALKWAYS (ON OR ATTACHED TO STRUCTURE)			54. RESPONSE TO LIVE LOAD		
6. DECK EXP JTS. OR DEVICES. NO. OF EACH			55. ESTIMATED REMAINING LIFE		
a. STEEL PL OR FINGER			60. REGULATORY SIGN NOTICE ISSUED		
b. MISC PREFAB			61. PROMPT-ACTION NOTICE ISSUED		
c. COMPRESSION SEAL			62. PRESENTLY POSTED		
d. STANDARD JOINTS			63. TOT. FIELD INSP TIME (INCLUDE WRITE UP)(MAN HR)		
e. OPEN JOINTS			64. TOTAL SNOOPER INSP. TIME (HRS)		
7. DECK DEBRIS (INCLUDES EXCESS SAND/GRAVEL)			65. TOTAL TRAFFIC CONTROL TIME (MAN HRS)		
8. SUPER STR. (FM. 1 (90)B TRUSS) ITEM 59			70. SI&A GENERAL CONDITION RATINGS		
10. LONGITUDINAL BEAMS OR GIRDERS			a. DECK		
11. LONGITUDINAL JOIST OR STRINGERS			ITEM 58		
12. INT. DIAP'S, X-FRAMES, BRACING & CONN'S			b. SUPERSTRUCTURE		
13. END DIAP'S, CURTAIN WALLS, & CONN'S			ITEM 59		
14. FLOOR BEAMS AND CONNECTIONS			c. SUBSTRUCTURE		
15. BEARING ASSEMBLIES (INCLUDING MISALIGN)			ITEM 60		
16. DRAINAGE SYSTEM (ON STRUCTURE)			d. CHANNEL & CHANNEL PROT.		
17. MOVABLE SPAN MACHINERY			ITEM 61		
18. SUB STR. ITEMS. ITEM 60 (INCLUDE SCOUR)			71. SI&A FIELD APPRAISAL RATINGS		
35. TIM SUB STR.			a. WATERWAY ADAQUACY		
a. ABUT. & INT. BENT CAPS & RISERS			b. APPR. RDWY. ALIGNMENT		
b. PILES, POST, SILLS, & BRACING			72. FIELD SCOUR EVALUATION		
c. BULKHEADS, WING'S, & TIE BACKS			USE OF INSP. ACCESSIBILITY EQUIPMENT		
36. CONC SUB STR.			SNOOPER (CODE S, 4, OR N)		
a. ABUT. & INT. BENT CAPS			HRS		
b. ABUT. & BENT COL'S BREASTWALLS			No		
c. ABUT. & INT. BENT PILES			LADDER		
d. BACKWALLS, WING'S, RETAIN. WALLS			No		
e. ABUT. & BENT FOOTINGS & SILLS			BUCKET TRUCK		
37. STEEL SUB STR.			Boat		
a. ABUT. & INT. BENT CAPS & RISERS			Other		
b. PILES, BRACING, AND BULKHEADS			No		
38. FOUNDATION PILES TYPE MATERIAL			SPECIAL INSPECTION REQUESTED FOR		
39. SLOPE PROT., RIP-RAP (INCLUDE DRAINAGE)			NOTE		
40. FENDER SYSTEMS			80. INSPECTED BY:		
41. DRIFT			81. REVIEWED BY:		

James E. Mendel

Bridge I&A Form 1(82)H		FIELD INSPECTION REPORT <u>Bridge Inspection & Analysis</u>	
State of North Carolina Dept. of Transportation Division of Highways			
Team Leader JAMES E. MONDOLFI			
Assisted By CLS			
Item No.	Grade		
2a	6	<p>TRANSVERSE HAIRLINE CRACK IN TOP OF DECK, SPAN 2, SIMILAR CRACKS THROUGHOUT (SEE PHOTO).</p> <p>ROUGH AND WORN SURFACE WITH EXPOSED AGGREGATE IN TOP OF DECK, SPAN 1 SHOWN, SIMILAR CONDITION THROUGHOUT (SEE PHOTO).</p> <p>HAIRLINE TO 1/16 IN CRACK IN TOP OF DECK, EXTENDING 6 FT FROM DECK EXPANSION JOINT AT BENT 1, SIMILAR CRACKS AT ALL DECK EXPANSION JOINTS (SEE PHOTO).</p> <p>TRANSVERSE HAIRLINE CRACK WITH EFFLORESCENCE IN BOTTOM OF DECK, SPAN 4, SIMILAR CRACKS THROUGHOUT (SEE PHOTO).</p> <p>TRANSVERSE HAIRLINE CRACK WITH EFFLORESCENCE IN BOTTOM OF DECK OVERHANG, BOTH SIDES AT VARIOUS LOCATIONS (SEE PHOTO).</p>	
3a	7	WEATHERING AND SCALING OF BRIDGE RAIL WITH EXPOSED AGGREGATE (SEE PHOTO).	
4	6	WEATHERING AND SCALING OF CURB WITH EXPOSED AGGREGATE (SEE PHOTO). HAIRLINE MAP CRACKING WITH EFFLORESCENCE IN FACE OF CURB AT VARIOUS LOCATIONS THROUGHOUT (SEE PHOTO).	
6d	6	DRIED AND MISSING JOINT SEALER ALONG DECK EXPANSION JOINT AT BENT 1	
7	7	DIRT AND DEBRIS WITH VEGETATION GROWING IN SHOULDER AREA OF DECK EXPANSION JOINT AT BENT 3, SIMILAR CONDITION AT ALL DECK EXPANSION JOINTS (SEE PHOTO).	
13	6	<p>HORIZONTAL HAIRLINE CRACK IN END BENT 2 CURTAINWALL IN BAY 2, SIMILAR CRACKS IN BAYS 1 AND 3 (SEE PHOTO).</p> <p>6 IN X 10 IN X 2 IN DEEP SPALL WITH EXPOSED REBAR IN BOTTOM OF END DIAPHRAGM AT BENT 3, SPAN 4 SIDE, BAY 2 (SEE PHOTO).</p>	
36a	6	<p>VERTICAL HAIRLINE CRACK IN FACE OF END BENT 2 CAP AT STEP, SIMILAR CRACKS AT STEPS AT END BENTS 1 AND 2 (SEE PHOTO).</p> <p>LONGITUDINAL HAIRLINE CRACK IN BOTTOM OF BENT 3 CAP AT PILE 2, SIMILAR CRACK AT BENT 1, PILE 1 (SEE PHOTO).</p> <p>DIAGONAL HAIRLINE CRACK IN FACE OF BENT 1 CAP AT BEAM 2, SPAN 2 SIDE (SEE PHOTO).</p>	
39	8	5 FT LONG X 1/8 IN HORIZONTAL CRACK IN SLOPE PROTECTION AT END BENT 2 (SEE PHOTO).	
50	5	<p>TRANSVERSE CRACKS IN ASPHALT WEARING SURFACE AT WEST APPROACH (SEE PHOTO).</p> <p>AREAS OF 1/2 IN DEEP SCARED PAVEMENT AT WEST APPROACH (SEE PHOTO).</p> <p>TRANSVERSE CRACK IN ASPHALT WEARING SURFACE ALONG END BENT 1 FILL FACE WITH 1/2 IN OF SETTLEMENT (SEE PHOTO).</p> <p>TRANSVERSE CRACK IN ASPHALT WEARING SURFACE ALONG END BENT 2 FILL</p>	

Bridge I&A Form 1(82)H

State of North Carolina
Dept. of Transportation
Division of Highways

FIELD INSPECTION REPORT

Bridge Inspection & Analysis

Team Leader **JAMES E. MONDOLFI**

Assisted By **CLS**

Item No.	Grade	
		FACE WITH 1/2 IN OF SETTLEMENT (SEE PHOTO). TRANSVERSE CRACKS IN ASPHALT WEARING SURFACE AT EAST APPROACH (SEE PHOTO).

BRIDGE INSPECTOR'S RECOMMENDATION FOR MAINTENANCE REPAIRS

Bridge: 250155

County CUMBERLAND

Date: 03/15/2007

These Repairs Should Be Made Within Twelve Months From Date Of This Inspection

Function Code	Description of Function	Unit	Quantity	Remarks	Est. Cost
556	Bridge approaches, surfacing or pavement replacement or repair	Man-Hours	40	SEAL CRACKS AND LEVEL ASPHALT WEARING SURFACE.	
578	General Maintenance of superstructure	Man-Hours	12	PATCH SPALL IN END DIAPHRAGM AT BENT 3.	
602	Sweep or Washing	Man-Hours	8	REMOVE DIRT, DEBRIS AND VEGETATION ALONG CURBS AND IN DECK EXPANSION JOINTS.	



TRANSVERSE CRACKS IN ASPHALT WEARING SURFACE AT WEST APPROACH



AREAS OF 1/2 IN DEEP SCARED PAVEMENT AT WEST APPROACH



TRANSVERSE CRACK IN ASPHALT WEARING SURFACE ALONG END BENT 1 FILL FACE WITH 1/2 IN OF SETTLEMENT



WEATHERING AND SCALING OF CURB WITH EXPOSED AGGREGATE



WEATHERING AND SCALING OF BRIDGE RAIL WITH EXPOSED AGGREGATE



HAIRLINE MAP CRACKING WITH EFFLORESCENCE IN FACE OF CURB AT VARIOUS LOCATIONS THROUGHOUT



DIRT AND DEBRIS WITH VEGETATION GROWING IN SHOULDER AREA OF DECK EXPANSION JOINT AT BENT 3, SIMILAR CONDITION AT ALL DECK EXPANSION JOINTS



TRANSVERSE HAIRLINE CRACK IN TOP OF DECK, SPAN 2, SIMILAR CRACKS THROUGHOUT



ROUGH AND WORN SURFACE WITH EXPOSED AGGREGATE IN TOP OF DECK, SPAN 1 SHOWN, SIMILAR CONDITION THROUGHOUT



DRIED AND MISSING JOINT SEALER ALONG DECK EXPANSION JOINT AT BENT 1



HAIRLINE TO 1/16 IN CRACK IN TOP OF DECK, EXTENDING 6 FT FROM DECK EXPANSION JOINT AT BENT 1,
SIMILAR CRACKS AT ALL DECK EXPANSION JOINTS



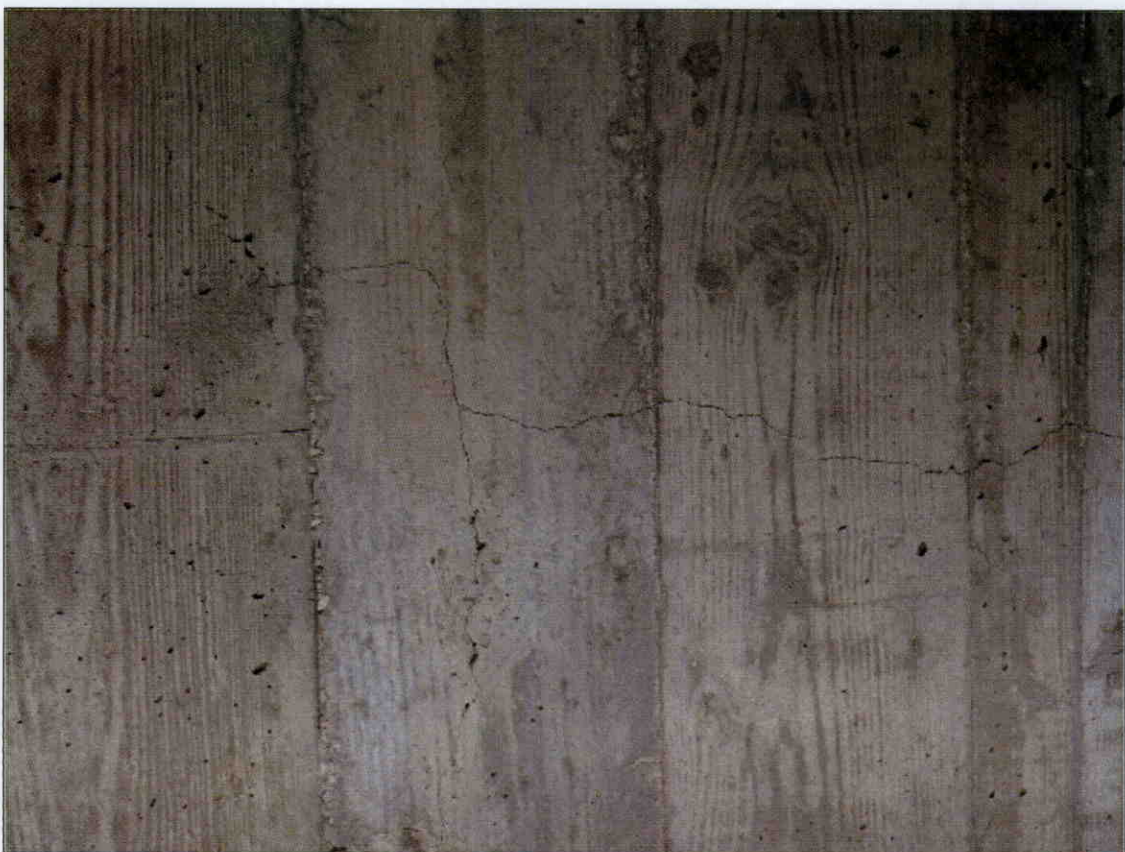
TRANSVERSE CRACK IN ASPHALT WEARING SURFACE ALONG END BENT 2 FILL FACE WITH 1/2 IN OF SETTLEMENT



TRANSVERSE CRACKS IN ASPHALT WEARING SURFACE AT EAST APPROACH



VERTICAL HAIRLINE CRACK IN FACE OF END BENT 2 CAP AT STEP, SIMILAR CRACKS AT STEPS AT END BENTS 1 AND 2.



HORIZONTAL HAIRLINE CRACK IN END BENT 2 CURTAINWALL IN BAY 2, SIMILAR CRACKS IN BAYS 1 AND 3



5 FT LONG X 1/8 IN HORIZONTAL CRACK IN SLOPE PROTECTION AT END BENT 2



6 IN X 10 IN X 2 IN SPALL WITH EXPOSED REBAR IN BOTTOM OF END DIAPHRAGM AT BENT 3, SPAN 4 SIDE, BAY 2



TRANSVERSE HAIRLINE CRACK WITH EFFLORESCENCE IN BOTTOM OF DECK, SPAN 4, SIMILAR CRACKS THROUGHOUT



LONGITUDINAL HAIRLINE CRACK IN BOTTOM OF BENT 3 CAP AT PILE 2, SIMILAR CRACK AT BENT 1, PILE 1



TRANSVERSE HAIRLINE CRACK WITH EFFLORESCENCE IN BOTTOM OF DECK OVERHANG BOTH SIDES AT VARIOUS LOCATIONS



DIAGONAL HAIRLINE CRACK IN FACE OF BENT 1 CAP AT BEAM 2, SPAN 2 SIDE

BRIDGE MAINTENANCE UNIT
DATA ON EXISTING STRUCTURE

RUN DATE 06/21/2007

COUNTY :	CUMBERLAND	DIV :	6	DIST :	2	STRUCTURE NUMBER :	250155	LENGTH :	282 FEET	
ROUTE CARRIED :	SR1813	FEATURE INTERSECTED :	I95							
LOCATED :	0.8 MI.E.JCT.US 301		BRIDGE NAME :							
FUNC. CLASS :	09	SYST.ON :	NFA	SYST.UNDER :	FA	ADT & YR :	130 2004	RAIL TYPE :		
								LT 141	RT 141	
BUILT :	1957	BY :	SHPWC	PROJ :	3437	FED.AID PROJ :	I-703(6)	DESIGN LOAD :		
								H 15		
REHAB :	0	BY :		PROJ :		ALIGNMENT :	TAN.	SKEW :	48	
								LANES :	ON 2 UNDER 4	
NAVIGATION :	VC 0	FT	HC 0	HT. CRN. TO BED :	0	FT	WATER DEPTH :	0	FT	
SUPERSTRUCTURE :	REINFORCED CONCRETE DECK ON I-BEAMS.									
SUBSTRUCTURE :	E.BTS&INT.BTS:RC CAPS ON RC PILES									
SPANS :	2@68'6;2@71'6									
BEAMS OR GIRDERS :	4 LINES 36 I-BMS@7' CTS.									
FLOOR :	7 RC/NO AWS		ENCROACHMENT :	DECK (OUT TO OUT) :					26.5 FT	
CLEAR ROADWAY :	24.0 FT		BETWEEN RAILS :	26.3 FT		SIDEWALK OR CURB :				
						LT	1.1 FT	RT	1.1 FT	
VERT.CL.OVER :	99 FT 99 IN		VERT.CL.UNDER :	14 FT 10 IN		HOR.CL.UNDER :				
						44.7 FT				
INV.RTG. :	HS-20	OPE.RTG. :	HS-33	CONTR.MEMBER :	BEAM INT.	POSTED :	SV 0	TTST 0	DATE 01/01/0001	
SYSTEM :	Primary S.R. Route				GREEN LINE ROUTE :					
						N				
2ND OPENING :	15 FT 01 IN NBL I-95		3RD OPENING :	4TH OPENING :		5TH OPENING :				
REMARKS :										

Structure Data Worksheet

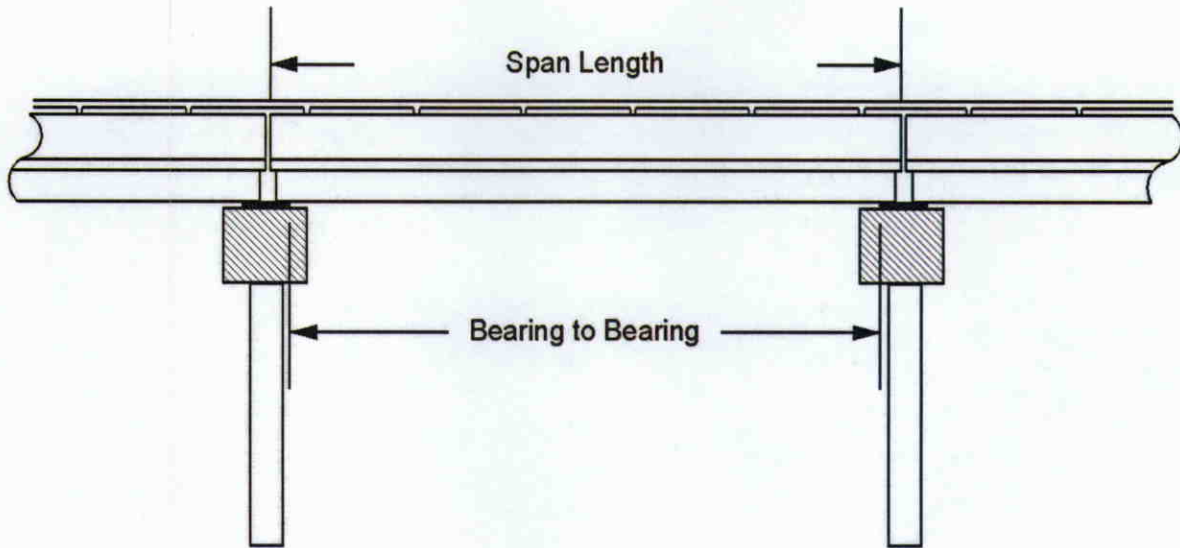
Spans

County: CUMBERLAND

Structure No: 250155

Date: 00/15/2007

Inspected By: JEM



Span No	Span Length	Bearing to Bearing	Comments
1	68.5		
2	68.5		
3	71.5		
4	71.5		

Bridge Inspection Field Sketch



Roadway	18ft Wide	2 Paved Lanes	Looking East
Left Shoulder	4ft Wide		4ft Unpaved
Right Shoulder	4ft Wide		4ft Unpaved
Left Guardrail			
Right Guardrail			

Title

Approach

Description

Approach Roadway

Bridge No: 250155

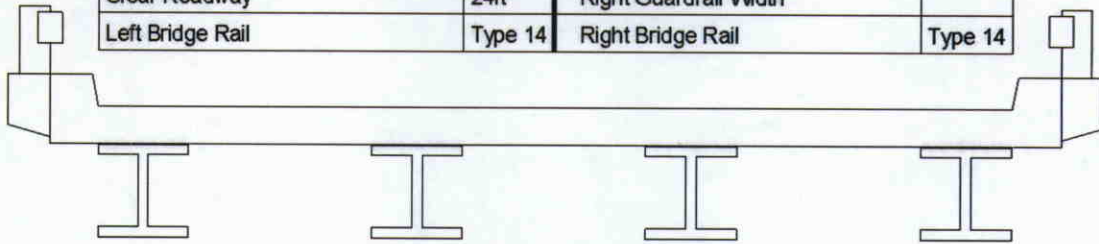
Drawn By: dlp

Date: 06/15/2005

File Name: S0098000163

Bridge Inspection Field Sketch

Deck Width/Out to Out	26.5ft	Wearing Surface	
Between Rails	26.25ft	Median Width	
Curb Height	0.833ft	Median Height	
Top Rail to Deck/Wearing Surface	2.583ft	Left Guardrail Width	
Clear Roadway	24ft	Right Guardrail Width	
Left Bridge Rail	Type 14	Right Bridge Rail	Type 14



Measurements for Span #	1		
Deck Thickness	0.583	Left Overhang	2.75
Top of Rail to Bottom of Beam	6.167	Right Overhang	2.75

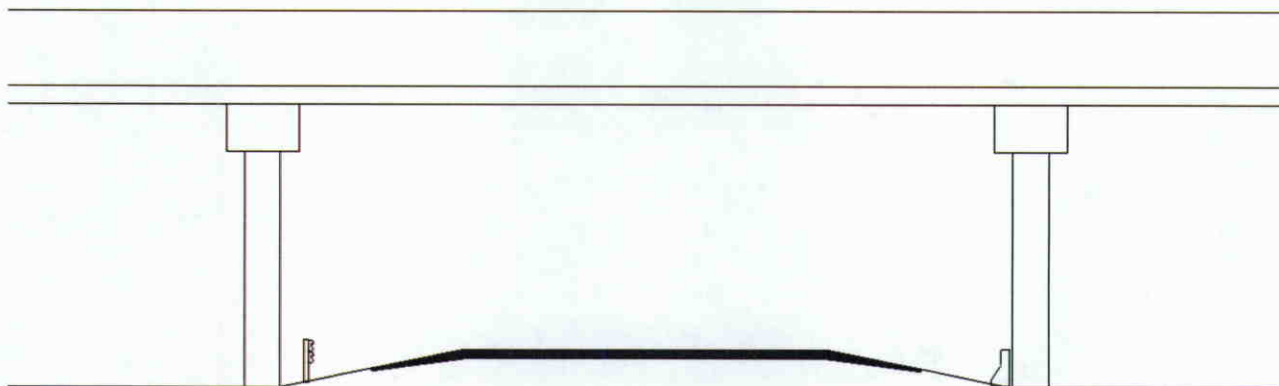
Beam No	Beam Type	Spacing	Comments
1	Steel I Beam	7 ft.	
2	Steel I Beam	7 ft.	
3	Steel I Beam	7 ft.	
4	Steel I Beam		

Typ. I - Beam - 1 ft. wide x 3 ft. high, .063 ft. flange, W36 x 150

Spans 1 thru 4 have same dimensions.

Title Superstructure		Description Span 1	
Bridge No: 250155	Drawn By:	Date: 06/15/2005	File Name: S0098000164

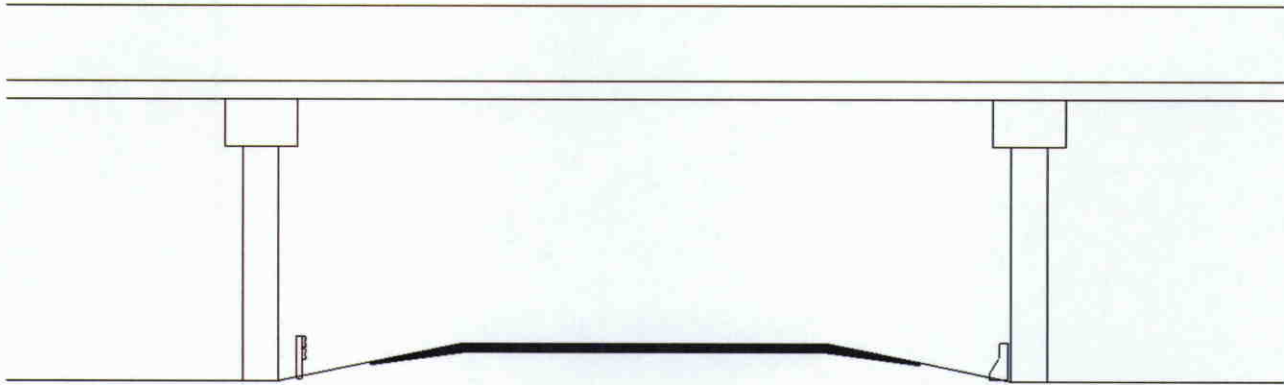
Bridge Inspection Field Sketch



Roadway	24ft Wide	2 Paved Lanes	All Lanes NorthBound
Left Shoulder	11ft Wide		Guardrail: 11ft from road
Right Shoulder	9.5ft Wide		Guardrail: 9.5ft from road
Left Turn Lane(s)			
Right Turn Lane(s)			
Distance to Left Bent	17.167ft		
Distance to Left Toe of Slope			
Distance to Right Bent	10.917ft		
Distance to Right Toe of Slope			
Max. Min. Vertical Clearance	15.167ft	10ft from Right edge of road	at beam # 1
Minimum Vertical Clearance	15.083ft	0ft from Center of road	at beam # 1

Title		Description	
Underclearance # 2		Span 3	
Bridge No: 250155	Drawn By: dlp	Date: 06/15/2005	File Name: S0098000166

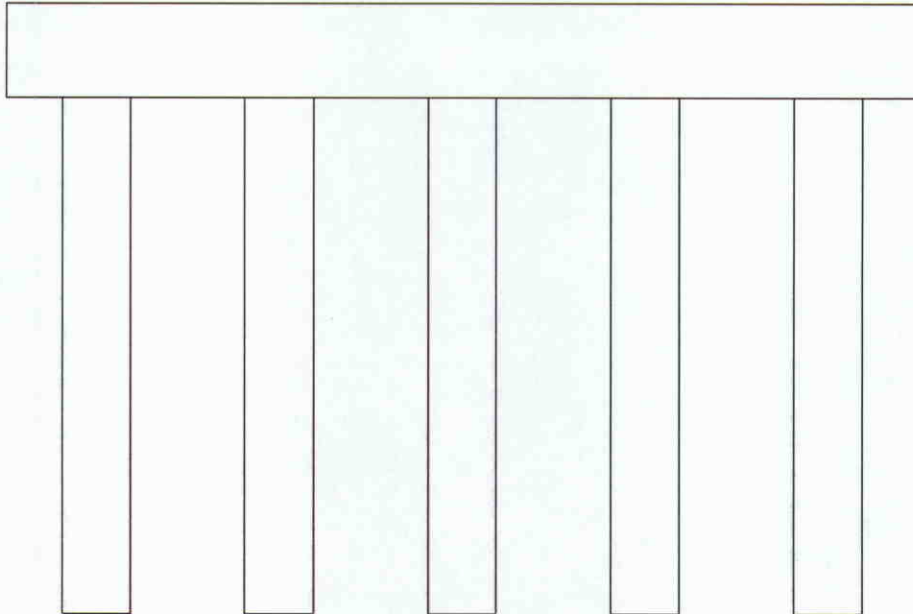
Bridge Inspection Field Sketch



Roadway	24ft Wide	2 Paved Lanes	All Lanes SouthBound
Left Shoulder	11ft Wide		Guardrail: 11ft from road
Right Shoulder	9.667ft Wide		Guardrail: 9.667ft from road
Left Turn Lane(s)			
Right Turn Lane(s)			
Distance to Left Bent	17.167ft		
Distance to Left Toe of Slope			
Distance to Right Bent	11.083ft		
Distance to Right Toe of Slope			
Max. Min. Vertical Clearance	14.833ft	0ft from Center of road	at beam # 1
Minimum Vertical Clearance	14.833ft	0ft from Center of road	at beam # 1

Title		Description	
Underclearance		Span 2	
Bridge No: 250155	Drawn By: dlp	Date: 06/15/2005	File Name: S0098000167

Bridge Inspection Field Sketch



Bent #	1		
Cap - Pre-Cast			
Cap Size	30.667ft Long	2.667ft Wide	2.667ft High
Left Overhang	1.833ft	Lt Cap/Beam Overhang	4.5ft
Right Overhang	1.833ft	Rt Cap/Beam Overhang	4.5ft

Pile #	Material	Pile Type	Spacing	Length	Width/Diam.	Height	Orientation
1	Prestressed Concrete	Pile Bent	7		20 in		Vertical
2	Prestressed Concrete	Pile Bent	7		20 in		Vertical
3	Prestressed Concrete	Pile Bent	7		20 in		Vertical
4	Prestressed Concrete	Pile Bent	7		20 in		Vertical
5	Prestressed Concrete	Pile Bent			20 in		Vertical

Title Pile Diagram		Description 5 Prestressed Concrete Piles	
Bridge No: 250155	Drawn By: CLS	Date: 03/12/2007	File Name: S0234001111



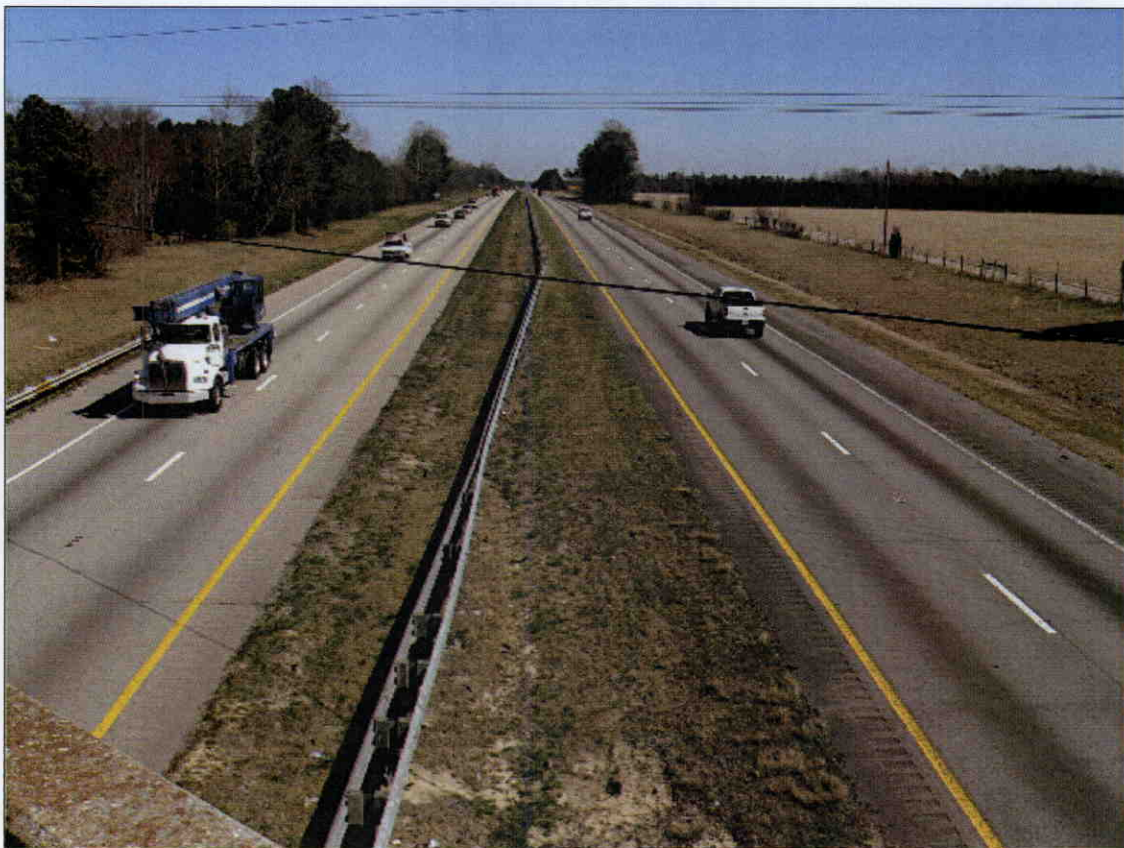
LOOKING EAST



TYPICAL BRIDGE RAIL, SOUTH SIDE SHOWN



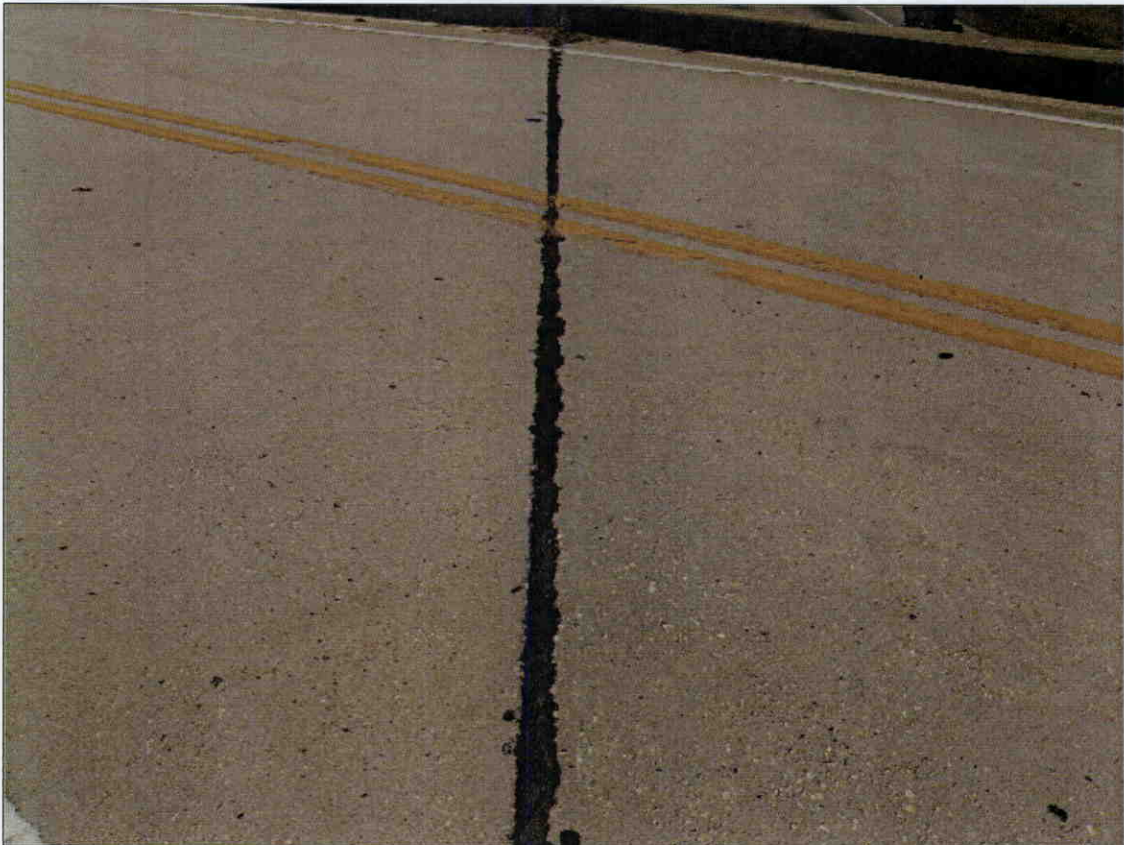
END OF GUARDRAIL AT BRIDGE RAIL



LOOKING NORTH



LOOKING SOUTH



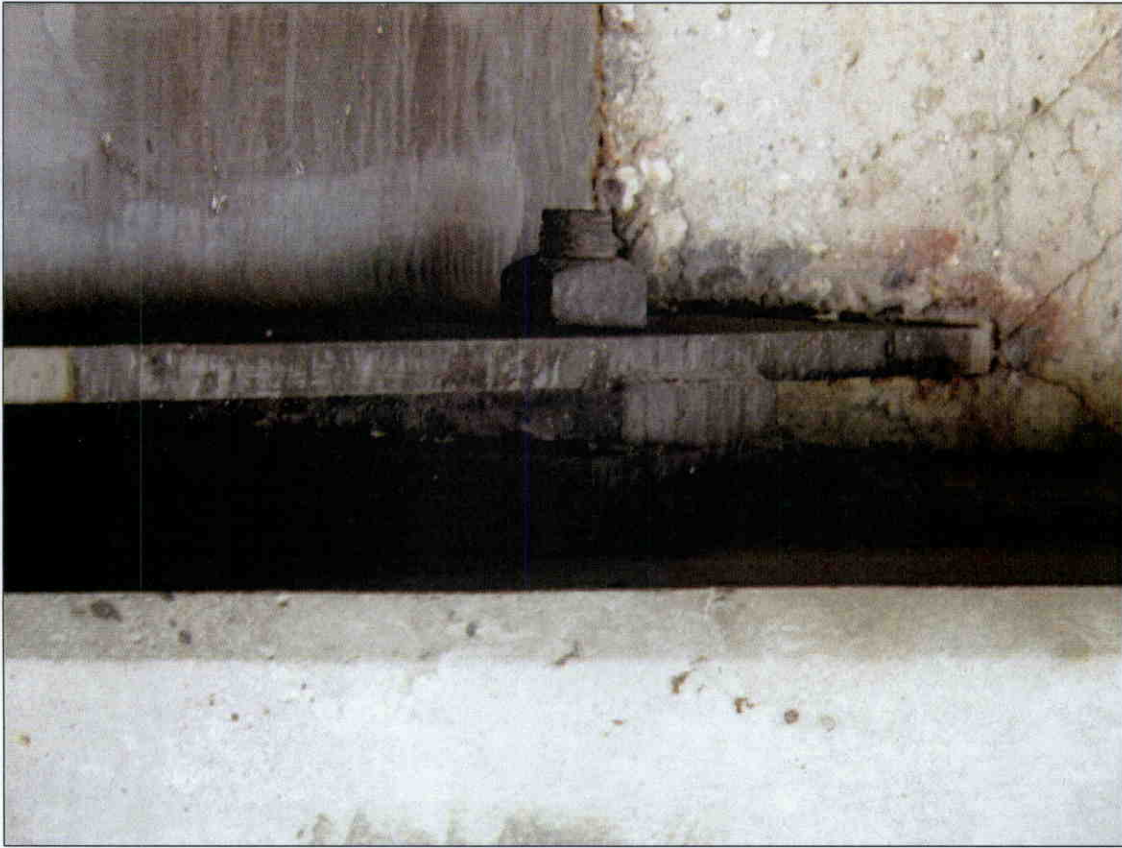
DECK EXPANSION JOINT AT BENT 2, SIMILAR DECK EXPANSION JOINTS AT BENTS 1 AND 3



LOOKING WEST



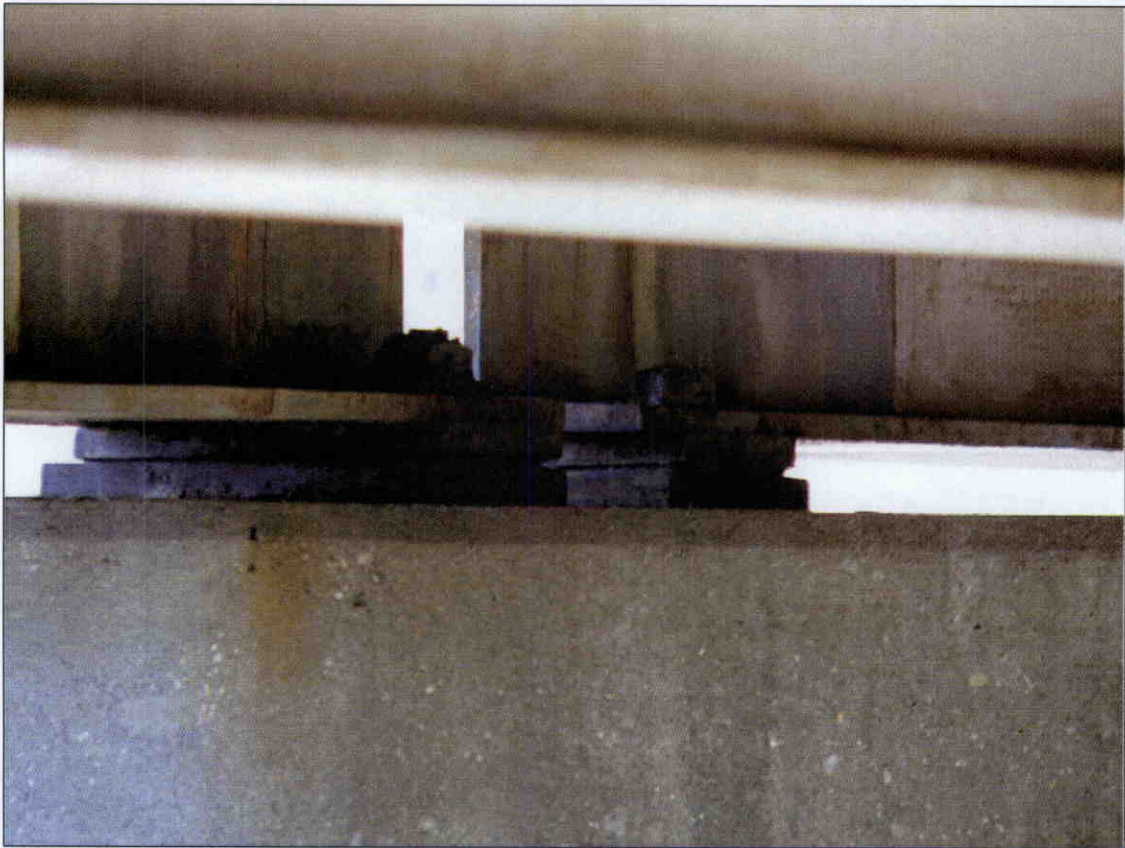
TYPICAL GUARDRAIL END TREATMENT, NORTHEAST SHOWN



TYPICAL BEARING AT END BENT, END BENT 2, BEAM 3 SHOWN



TYPICAL END BENT, END BENT 2 SHOWN



TYPICAL BEARING AT BENT, BENT 3, BEAM 4 SHOWN



TYPICAL SLOPE PROTECTION, END BENT 2 SHOWN



TYPICAL BENT, BENT 3 SHOWN



TYPICAL UNDERDECK, SPAN 3 SHOWN



SOUTH PROFILE LOOKING NORTH



NORTH PROFILE LOOKING SOUTH



DELINEATORS AT BENTS



CLEARANCE SIGN