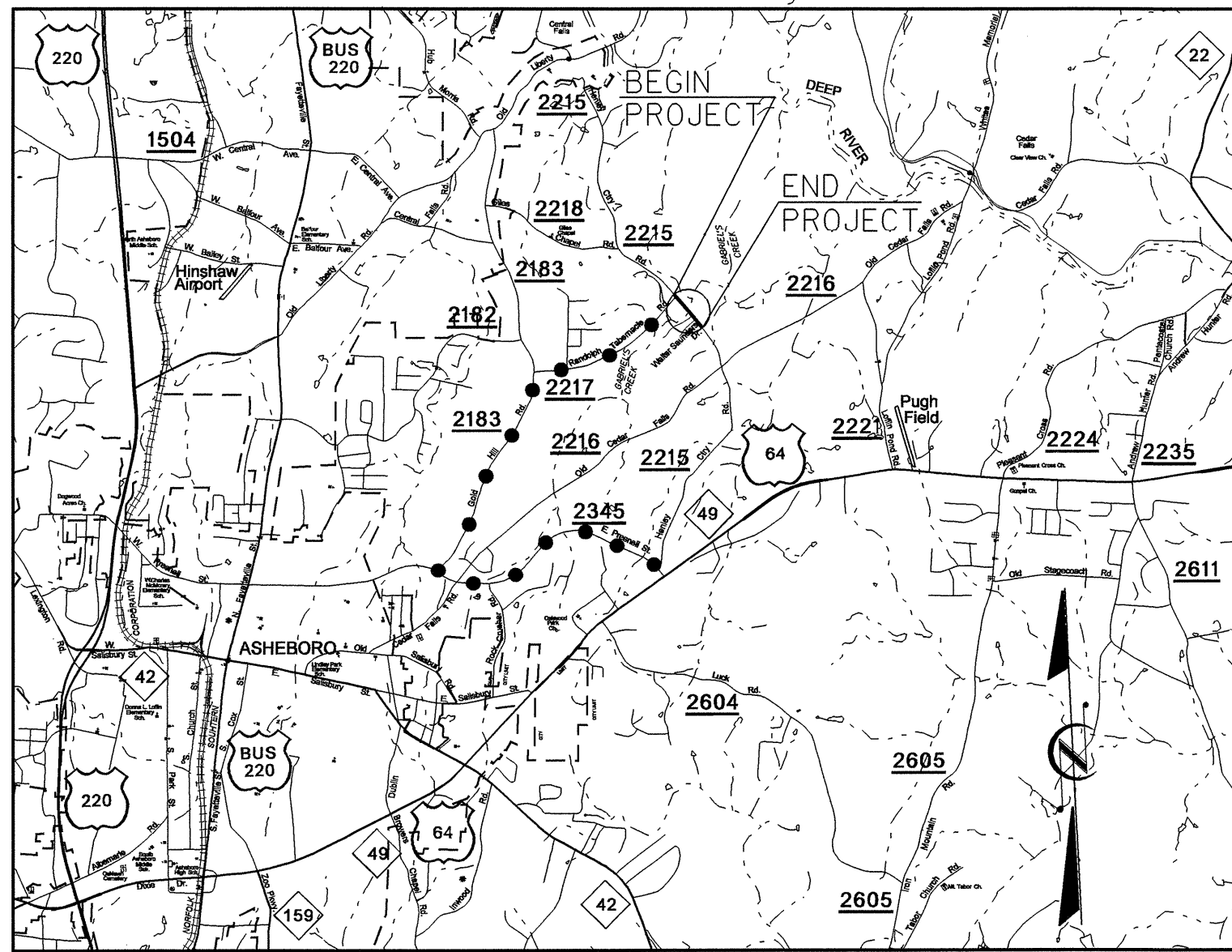


09/08/99
09/08/99

TIP PROJECT: B-4244

See Sheet 1-A For Index of Sheets
See Sheet 1-B For Conventional Symbols



VICINITY MAP

••••• DENOTES OFF-SITE DETOUR

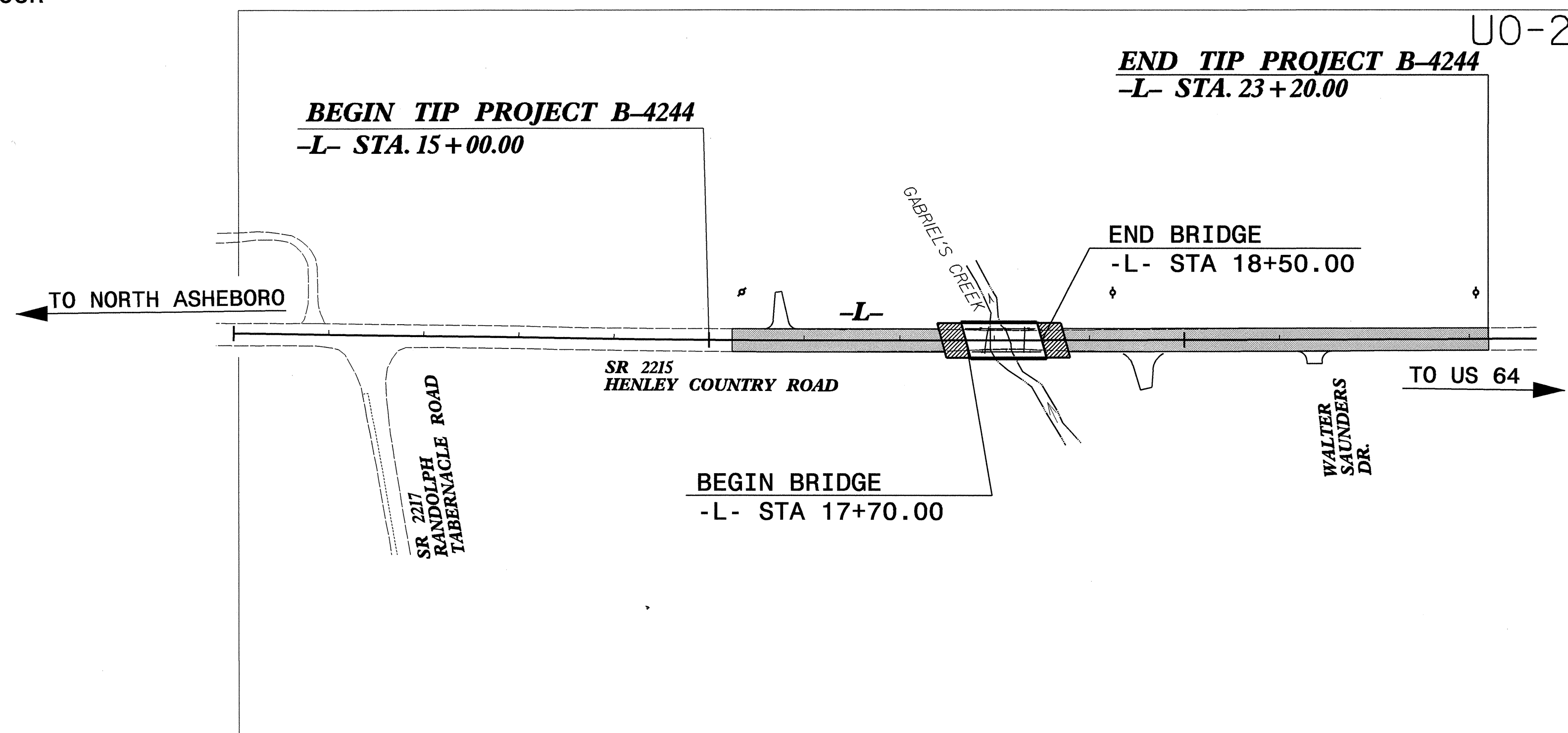
STATE OF NORTH CAROLINA
DIVISION OF HIGHWAYS

**UTILITY BY OTHERS PLANS
RANDOLPH COUNTY**

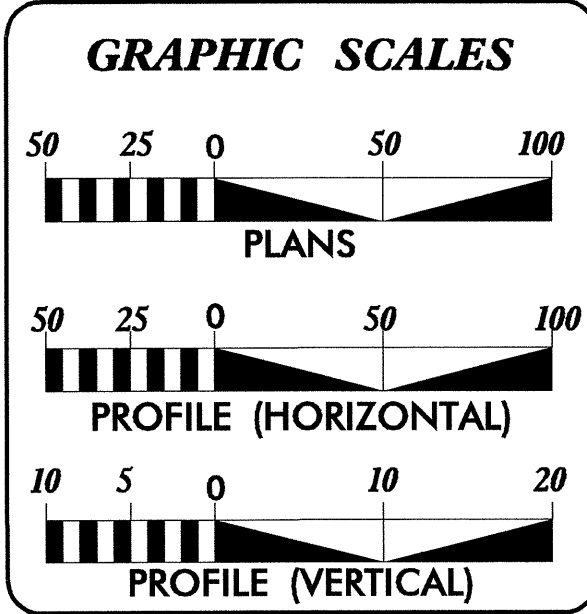
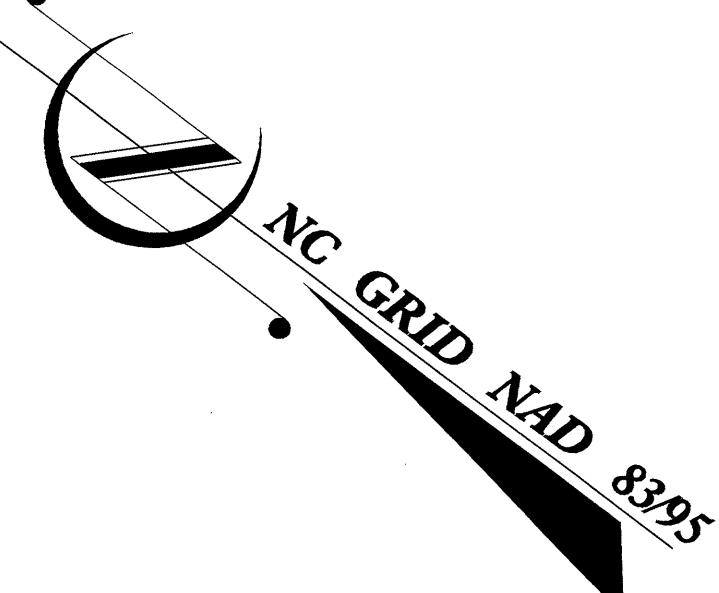
LOCATION: BRIDGE NO. 140 OVER GABRIEL'S CREEK ON SR 2215

TYPE OF WORK: UTILITY RELOCATION

W 1/4 B CELL



U0-2

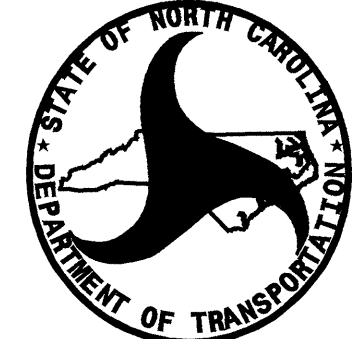


INDEX OF SHEETS

SHEET NO.	DESCRIPTION
UO-1	TITLE SHEET
UO-2	UTILITY BY OTHERS PLAN SHEETS

UTILITY OWNERS ON PROJECT

- (1) PROGRESS ENERGY
- (2) EMBARQ
- (3) PIEDMONT NATURAL GAS



PREPARED IN THE OFFICE OF:
**DIVISION OF HIGHWAYS
DESIGN SERVICES
UTILITY SECTION**

1591 MAIL SERVICES CENTER
RALEIGH NC 27699-1591
PHONE (919) 250-4128
FAX (919) 250-4119

Roger Worthington, P.E. UTILITIES SECTION ENGINEER
Carl Barclay, P.E. UTILITIES SQUAD LEADER PROJECT ENGINEER
Ali Kouchehi, P.E. UTILITIES PROJECT DESIGNER

02-APR-2008 13:56
\\atkins\es\c\proj\B4244_rdy_tsh.dgn
USER:ERNAME

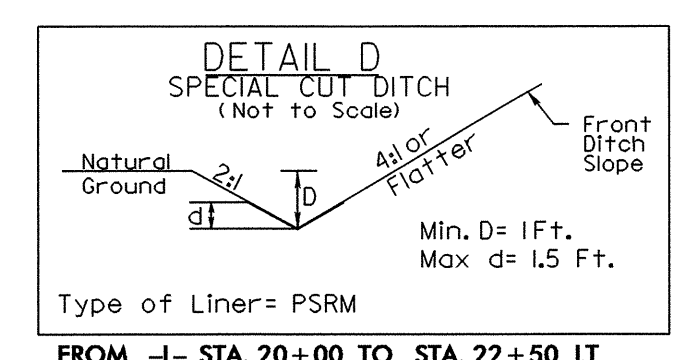
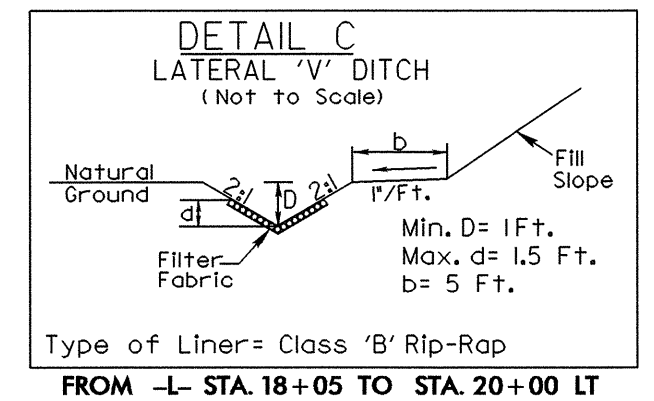
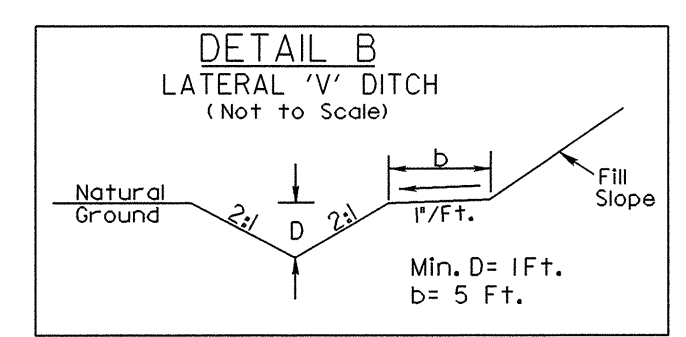
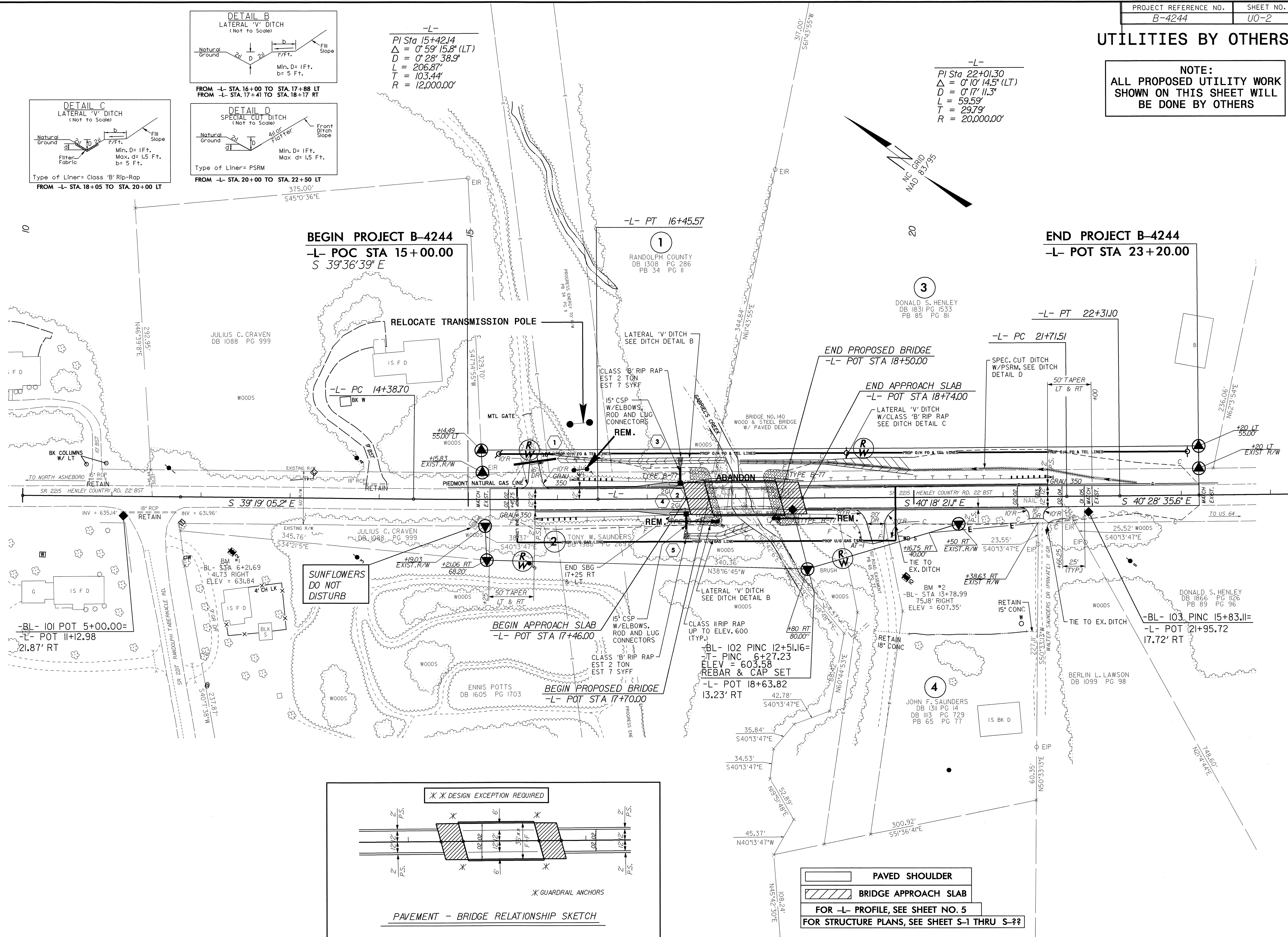
UTILITIES BY OTHERS

NOTE:
ALL PROPOSED UTILITY WORK SHOWN ON THIS SHEET WILL BE DONE BY OTHERS

REVISIONS

- 1. 10-23-06 REVISED BEGINNING OF PROJECT TO AVOID SUNFLOWERS.
- 2. 11-13-06 PROPERTY OWNER CHANGE ON PARCEL 2.
- 3. 3-19-07 LENGTHENED END OF PROJECT PER DIVISION REQUEST TO REMOVE ROCK CUT.

002-AFFR-200808 098222
 D:\projects\080808\098222\080808.dwg
 08/13/99

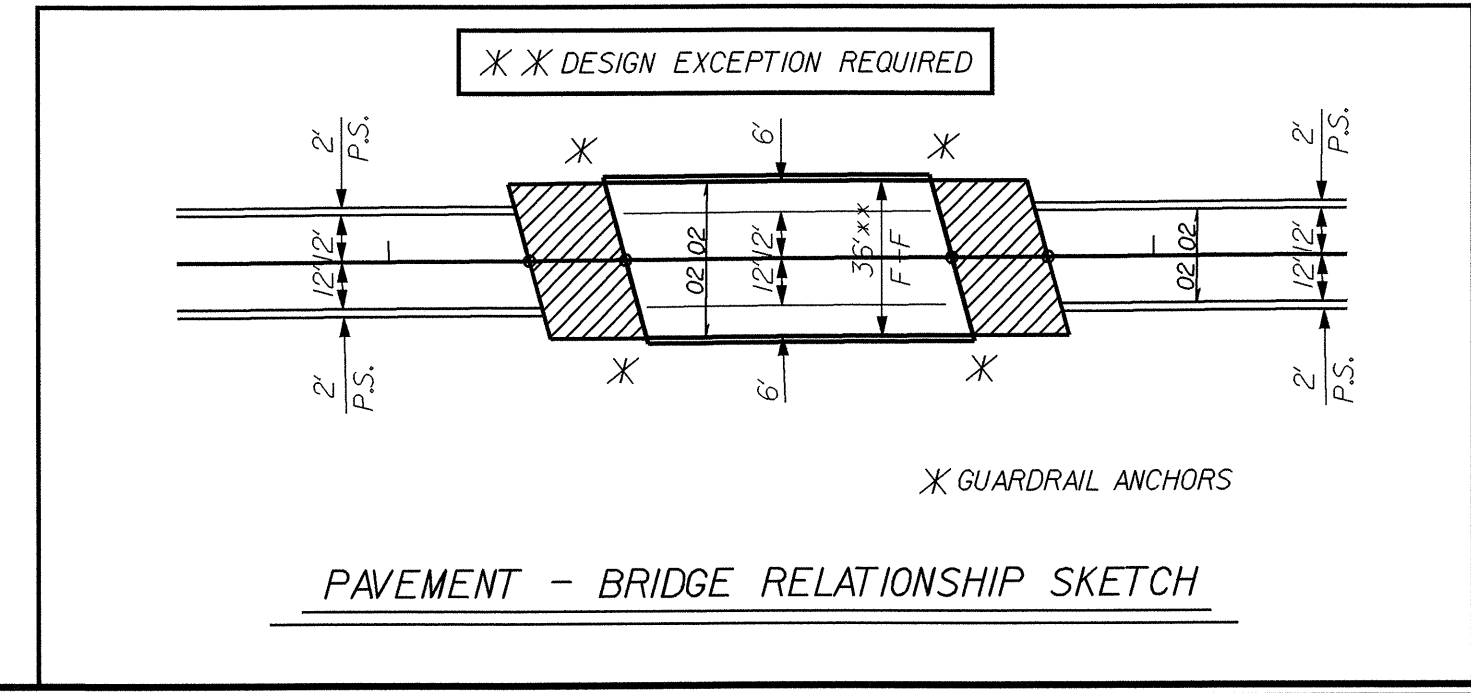


-L-
 PI Sta 15+42.14
 $\Delta = 0^\circ 59' 15.8''$ (LT)
 $D = 0^\circ 28' 38.9''$
 $L = 206.87'$
 $T = 103.44'$
 $R = 12,000.00'$

-L-
 PI Sta 22+01.30
 $\Delta = 0^\circ 10' 14.5''$ (LT)
 $D = 0^\circ 17' 11.3''$
 $L = 59.59'$
 $T = 29.79'$
 $R = 20,000.00'$

BEGIN PROJECT B-4244
-L- POC STA 15+00.00
 $S 39^\circ 36' 39'' E$

END PROJECT B-4244
-L- POT STA 23+20.00



- [Symbol] PAVED SHOULDER
- [Symbol] BRIDGE APPROACH SLAB
- FOR -L- PROFILE, SEE SHEET NO. 5
- FOR STRUCTURE PLANS, SEE SHEET S-1 THRU S-??