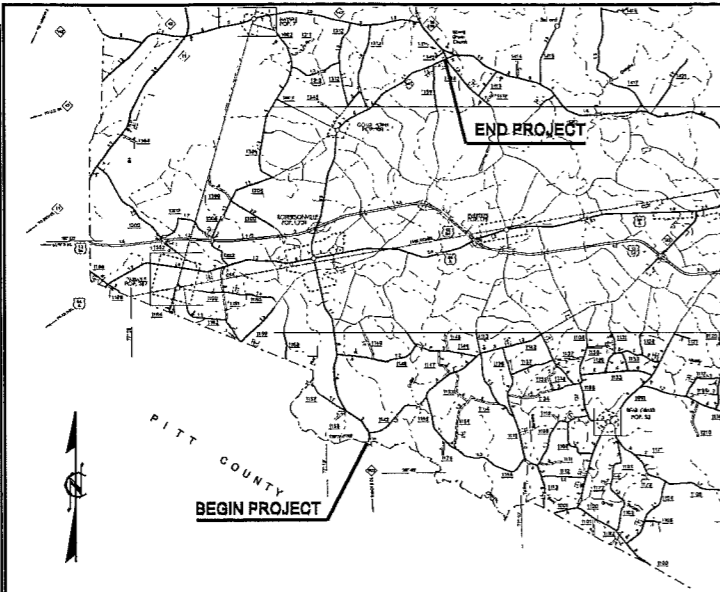


09/08/99

NCMA PROJECT: MA01061R

WBS# : 39421

21-MAY-2008 14:34
s:\contracts\resurfacing projects\division\39421martin\nc_903_martin_co\title.dgn
\$\$\$\$\$USERNAME\$\$\$\$\$



VICINITY MAP

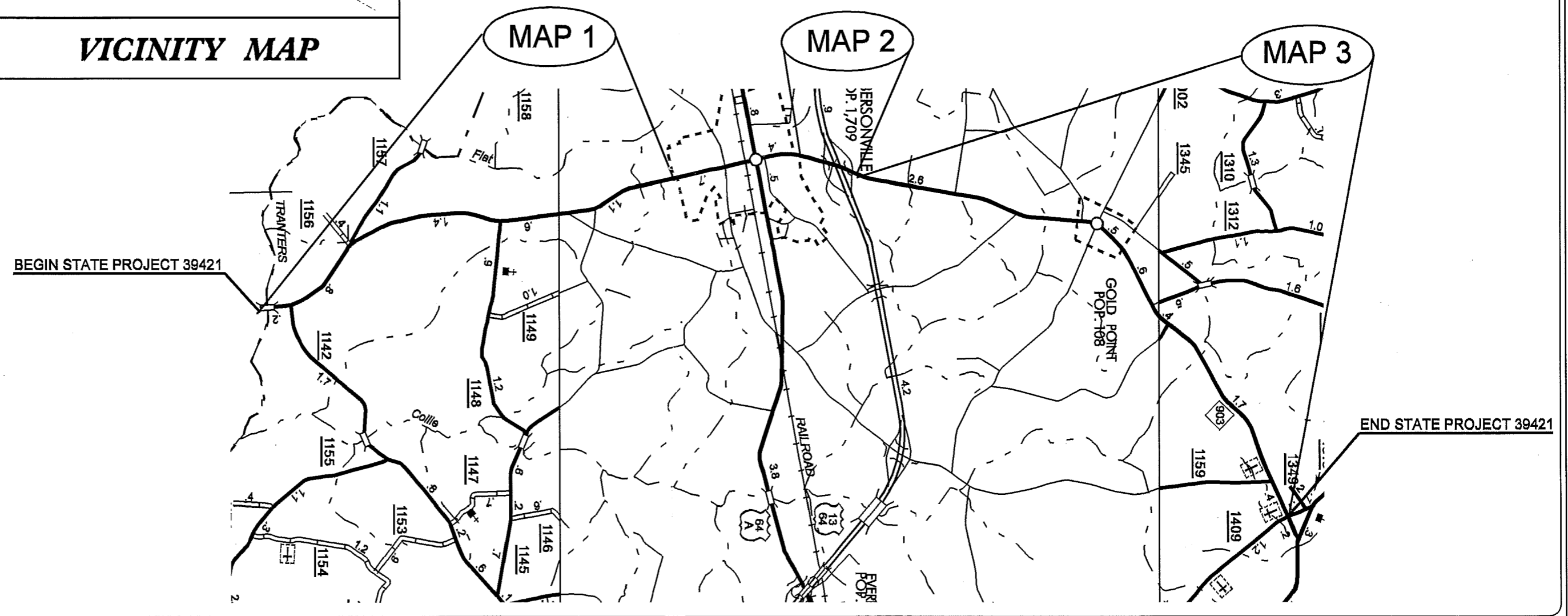
STATE OF NORTH CAROLINA
DIVISION OF HIGHWAYS

MARTIN COUNTY

LOCATION: NC 903 FROM PITT COUNTY LINE TO THE ROBERSONVILLE CITY LIMIT SOUTH OF US 64A AND FROM THE ROBERSONVILLE CITY LIMIT NORTH OF US 64A TO NC 125

TYPE OF WORK: RESURFACING, DRAINAGE AND GUARDRAIL

STATE	STATE PROJECT REFERENCE NO.	SHEET NO.	TOTAL SHEETS
N.C.	39421	1	6
STATE PROJ. NO.	NCMA PROJ. NO.	DESCRIPTION	
39421	MA01061R		



GRAPHIC SCALES

N. T. S.

PROJECT LENGTH

- LENGTH OF ROADWAY MAP 1 = 4 MILES
- LENGTH OF ROADWAY MAP 2 = 0.35 MILES
- LENGTH OF ROADWAY MAP 3 = 5.85 MILES

TOTAL LENGTH STATE PROJECT WBS# 39421 = 10.2 MILES

Prepared in the Office of:
DIVISION OF HIGHWAYS
113 Airport Dr., Suite 100, Edenton, NC 27909

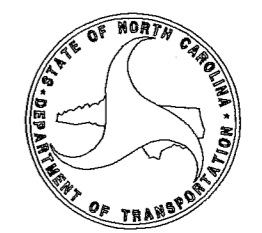
2006 STANDARD SPECIFICATIONS

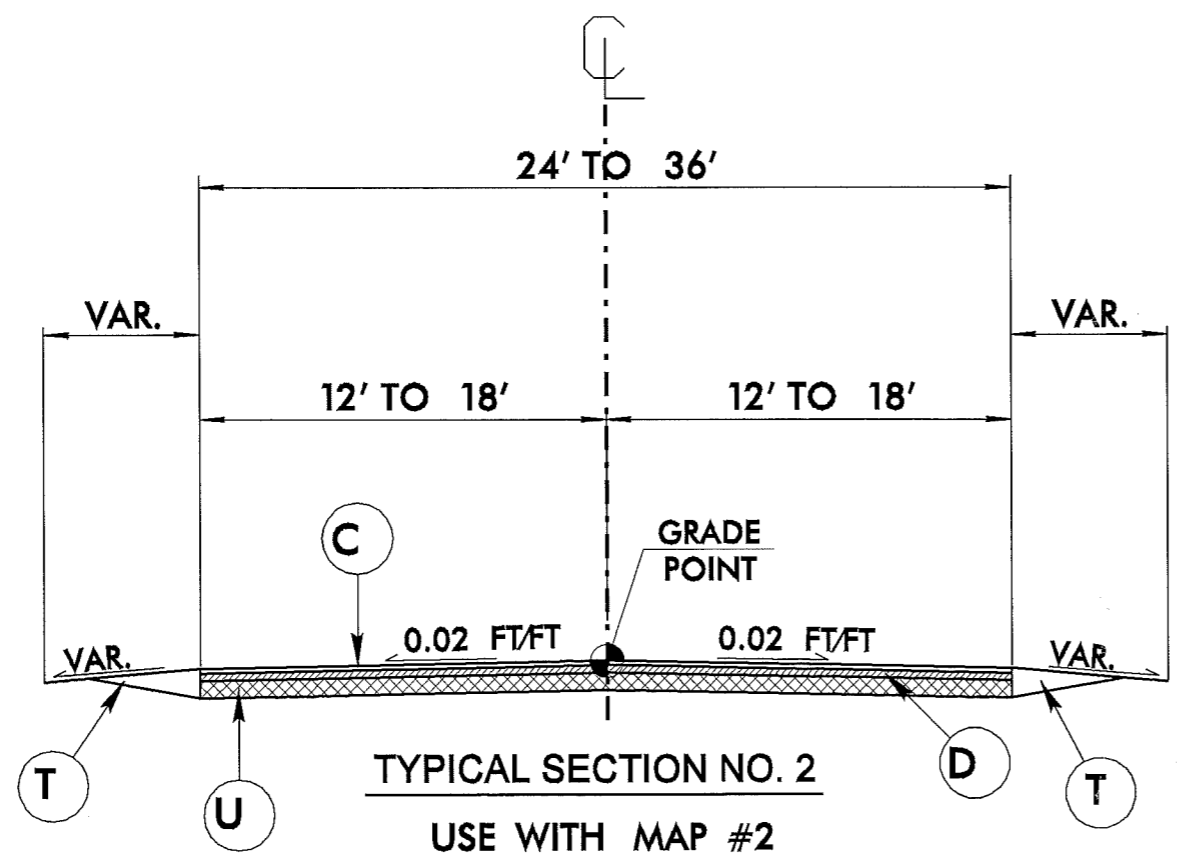
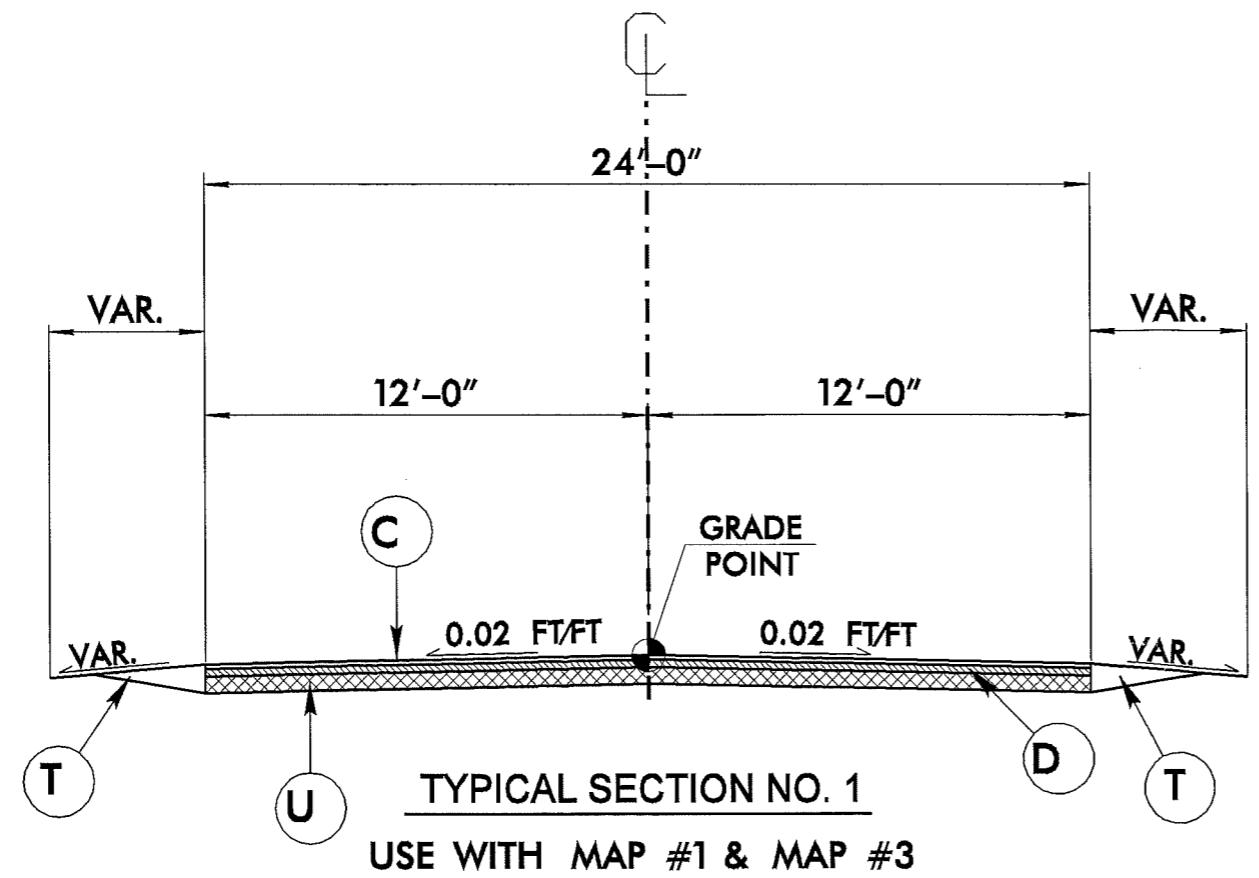
LETTING DATE:
JULY 15, 2008

S. P. Fenwick, PLS
DIVISION DESIGN /CONST. ENGINEER

C.E. Slachta
DIVISION STAFF ENGINEER

DIVISION OF HIGHWAYS
STATE OF NORTH CAROLINA





SHOULDER RECONSTRUCTION TO BE PERFORMED AS DIRECTED BY THE ENGINEER TO MATCH EXISTING SHOULDERS AS CLOSE AS POSSIBLE

PROPOSED CONSTRUCTION SEQUENCE:

- 1) PERFORM PIPE REPLACEMENTS.
- 2) PLACE I 19.0B ON FULL WIDTH AND APPLY TEMPORARY PAINT.
- 3) PLACE S9.5B ON FULL WIDTH AND APPLY TEMPORARY PAINT.
- 4) RECONSTRUCT SHOULDERS
- 5) APPLY THERMOPLASTIC AND RAISED PAVEMENT MARKERS.

C	PROP. APPROX. 1½" ASPHALT CONCRETE SURFACE COURSE, TYPE S9.5B, AT AN AVERAGE RATE OF 168 LBS. PER SQ. YD.
D	PROP. APPROX. 2½" ASPHALT CONCRETE INTERMEDIATE COURSE, TYPE I19.0B, AT AN AVERAGE RATE OF 285 LBS. PER SQ. YD.
T	EARTH MATERIAL.
U	EXISTING PAVEMENT.

NOTE: PAVEMENT EDGE SLOPES ARE 1:1 UNLESS SHOWN OTHERWISE.

22-MAY-2008 09:59
 I:\CONSTRUCTION\RESURFACING\PROJECTS\RESURFACING\DIVISION 1\39421\martin\nc 983.martin co\fig\psd\1.dgn
 33:56:20
 1:39:42\martin\nc 983.martin co\fig\psd\1.dgn

STATE OF NORTH CAROLINA
DEPT. OF TRANSPORTATION
DIVISION OF HIGHWAYS
RALEIGH, N.C.

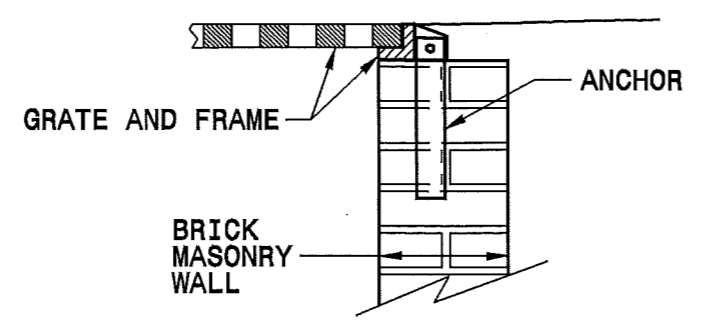
ENGLISH DETAIL DRAWING FOR
ANCHORAGE FOR FRAMES
BRICK/CONCRETE/PRECAST CONCRETE

SHEET 1 OF 1
840D25

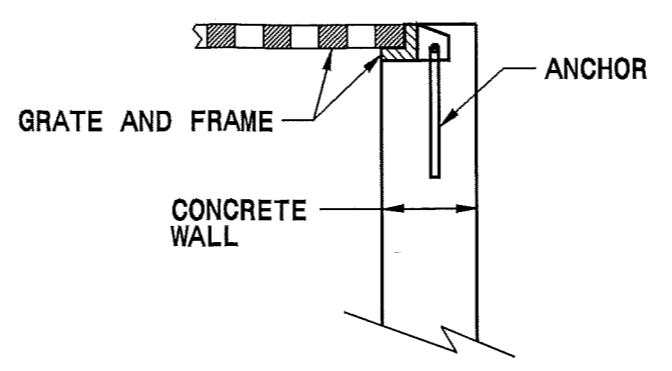
STATE OF NORTH CAROLINA
DEPT. OF TRANSPORTATION
DIVISION OF HIGHWAYS
RALEIGH, N.C.

ENGLISH DETAIL DRAWING FOR
ANCHORAGE FOR FRAMES
BRICK/CONCRETE/PRECAST CONCRETE

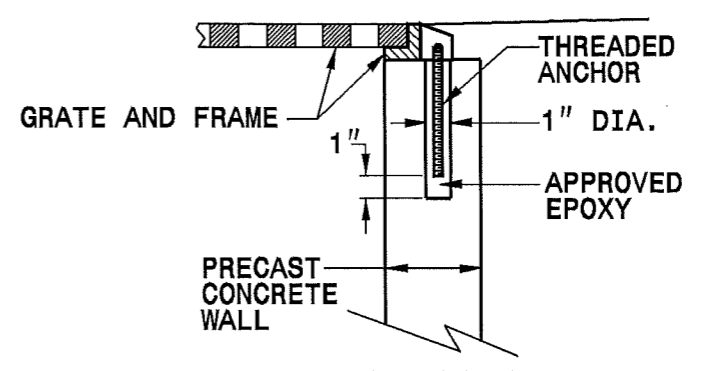
SHEET 1 OF 1
840D25



BRICK MASONRY CONSTRUCTION



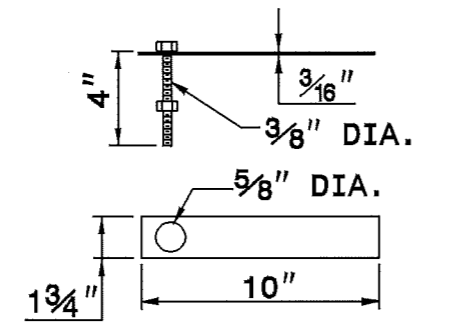
CONCRETE CONSTRUCTION



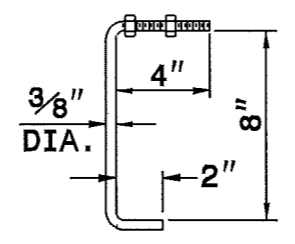
PRECAST CONCRETE CONSTRUCTION

DETAIL SHOWING ANCHORAGE OF FRAME FOR GRATED DROP INLET

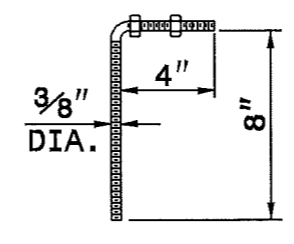
NOTE:
CONSTRUCT GRATED DROP INLET TO COINCIDE WITH NORMAL OR SUPERELEVATED SHOULDER OR PAVEMENT SLOPE.



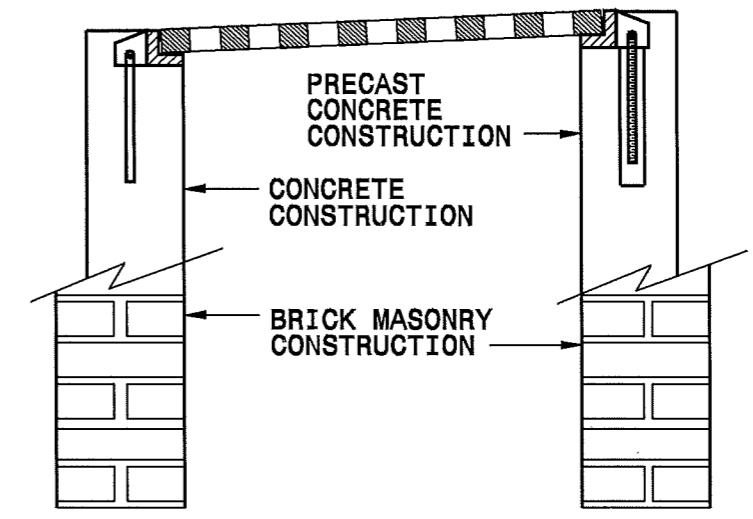
MASONRY ANCHOR
3/8" DIA. BOLT WITH PLATE



CONCRETE ANCHOR
3/8" DIA. BENT BAR



PRECAST CONCRETE ANCHOR
3/8" DIA. BENT BAR



FRAME AND GRATE INSTALLATION FOR NORMAL CROWN AND SUPERELEVATED SECTIONS

PROJECT SERVICES UNIT
STANDARDS AND SPECIAL DESIGN
Office 919-250-4128 FAX 919-250-4119

SEE PLATE FOR TITLE

ORIGINAL BY: 2006 STD 840.25 DATE: 07/18/08
MODIFIED BY: E.E. WARD DATE: 9/25/08
CHECKED BY: DATE:
FILE SPEC.:

SECTION 05100 - CURBS AND GUTTERS
PART 1 - SUMMARY
A. Section Includes
1. Concrete/Brick/Pre-Cast Concrete Anchorage for Frames

DIVISION OF HIGHWAYS
STATE OF NORTH CAROLINA
GUARDRAIL SUMMARY

NC1484

"N" = DISTANCE FROM EDGE OF LANE TO FACE OF GUARDRAIL
TOTAL SHOULDER WIDTH = DISTANCE FROM EDGE OF TRAVEL LANE TO SHOULDER BREAK POINT.
FLARE LENGTH = DISTANCE FROM LAST SECTION OF PARALLEL GUARDRAIL TO END OF GUARDRAIL
W = TOTAL WIDTH OF FLARE FROM BEGIN

G = GATING IMPACT ATTENUATOR TYPE 350
NG = NON-GATING IMPACT ATTENUATOR TYPE 350

SURVEY LINE (MILE)	BEG. STA.	END STA.	LOCATION	LENGTH			WARRANT POINT		"N" DIST. FROM E.O.L.	TOTAL SHOULDER WIDTH	FLARE LENGTH		W		ANCHORS								IMPACT ATTENUATOR TYPE 350		SINGLE FACED CONCRETE BARRIER	REMOVE EXISTING GUARDRAIL	REMOVE & STOCKPILE EXISTING GUARDRAIL	REMARKS					
				STRAIGHT	SHOP CURVED	DOUBLE FACED	APPROACH END	TRAILING END			APPROACH END	TRAILING END	APPROACH END	TRAILING END	XI MOD	XI	GRAU 350	M-350	XIII	CAT-1	VI MOD	BIC	TIE TO W	G					NG				
9.6			BOX CULVERT	175					4																							Existing Posts Attached to Box Culvert Are To Remain And All Other Post Shall Be Replaced - Left Side	
9.6			BOX CULVERT	175					4																						Existing Posts Attached to Box Culvert Are To Remain And All Other Post Shall Be Replaced - Right Side		
TOTAL				350																													
LESS ANCHOR DEDUCTIONS																																	
GRAU-350	4	at 50.0'		200																													
M-350	0	at 37.5'		0																													
CAT-1	0	at 6.25'		0																													
AT-1	0	at 6.25'		0																													
TYPE III	0	at 18.75'		0																													
TIE TO W	0	at 25.0'		0																													
TOTAL DEDUCTIONS				200																													
TOTAL LENGTH				150 feet																													

*NOTE: THE REMOVAL OF EXISTING GUARDRAIL IS INCIDENTAL TO THE INSTALLATION OF THE PROPOSED STEEL BEAM GUARDRAIL (SEE STEEL BEAM GUARDRAIL SPECIAL PROVISION).

PROJECT NO.	SHEET NO.	TOTAL NO.
39421	6	6

SUMMARY OF QUANTITIES

PROJECT NO	COUNTY	MAP NO	ROUTE	DESCRIPTION	TYP	LENGTH MI	WIDTH FT	STEEL BEAM GUARDRAIL LF	BORROW CY	FOUNDATION CONDITIONING MATERIAL TON	INCIDENTAL STONE BASE TONS	SHOULDER RECONSTRUCTION SMI	INTERMEDIATE COURSE, 119.0B TONS	SURFACE COURSE, S9.6B TONS	PG 64-22 PLANT MIX TONS	PATCHING EXISTING PAVEMENT TONS	MASONRY DRAINAGE STRUCTURE TRAFFIC BEARING EA	FRAME W/TWO GRATES STD. 840.29 EA	5" MONOLITHIC CONCRETE ISLAND (KEYED-IN) SQ.YD.	GRAU, TYPE 350 EA	STONE FOR EROSION CONTROL, CLASS B TON	SEDIMENT CONTROL STONE TON	1/4" HARDWARE CLOTH LF	SEED & MULCHING AC	PIPE REMOVAL LF	18" CAA PIPE CULV, 0.060" THICK LF	TEMPORARY SILT FENCE LF	
39421	Martin	1	NC 903	FROM PITT CO. LINE TO ROBERSONVILLE CITY LIMITS	1	4	24				411	8	8,997	5,231	737													
39421	Martin	2	NC 903	3 LANE SECTION UNDER US 64	2	0.35	38					0.7	1,238	723	102													
39421	Martin	3	NC 903	ROBERSONVILLE CITY LIMITS TO NC 125	1	5.85	24	150	70	13	546	11.7	13,158	7,650	1,077	235	3	3	650	4	40	5	60	5.6	36	128	500	
TOTAL FOR PROJ NO. 39421						10.2		150	70	13	957	20.4	23,393	13,604	1,916	235	3	3	650	4	40	5	60	10	36	128	500	
GRAND TOTAL						10.2		150	70	13	957	20.4	23,393	13,604	1,916	235	3	3	650	4	40	5	60	10	36	128	500	

THERMOPLASTIC AND PAINT QUANTITIES

PROJECT NO	COUNTY	MAP NO	ROUTE	DESCRIPTION	TYP	LENGTH MI	WIDTH FT	4" X 90 M WHITE THERMO LF	4" X 120 M YELLOW THERMO LF	4" X 120 M WHITE THERMO LF	8" X 120 M YELLOW THERMO LF	24" X 120 M WHITE THERMO LF	THERMO MSG SCHOOL 120 M EA	THERMO LT ARROW 90 M EA	4" WHITE PAINT LF	4" YELLOW PAINT LF	8" YELLOW PAINT LF	24" WHITE PAINT LF	PAINT MSG SCHOOL EA	PAINT LT ARROW EA	YELLOW & YELLOW MARKERS EA	CRYSTAL & RED MARKERS EA
39421	Martin	1	NC 903	FROM PITT CO. LINE TO ROBERSONVILLE CITY LIMITS	1	4	24	43,040	26,400						43,040	26,400					264	
39421		2	NC 903	3 LANE SECTION UNDER US 64	2	0.35	38	4,840	6,120	540	560			6	5,480	6,120	560			6	47	14
39421		3	NC 903	ROBERSONVILLE CITY LIMITS TO NC 125	1	5.85	24	62,946	38,610			100	12		62,946	38,610		100	12		386	
TOTAL FOR PROJ NO. 39421						10.2		110,926	71,130	540	560	100	12	6	111,466	71,130	560	100	12	6	697	14
GRAND TOTAL						10.2		110,926	71,130	540	560	100	12	6	111,466	71,130	560	100	12	6	697	14

TWO LANE, TWO WAY WORK ZONE (L-LINES)


POSTED SPEED LIMIT (M.P.H.)	RECOMMENDED MINIMUM SIGN SPACING
P.S.L. ≤ 50	350'
P.S.L. ≥ 55	500'

*** ROAD WORK NEXT XX MILES G20-1A 60"x24"**

THIS SIGN TO BE USED ON PROJECTS LONGER THAN 2 MILES. THE NUMBER DISPLAYED ON THE SIGN IS TO BE A WHOLE NUMBER ROUNDED UP TO THE NEXT MILE. IT'S TO BE LOCATED 1,500 FEET INSIDE OF THE CONSTRUCTION LIMITS.

STATE OF NORTH CAROLINA
DEPT. OF TRANSPORTATION
DIVISION OF HIGHWAYS
RALEIGH, N.C.

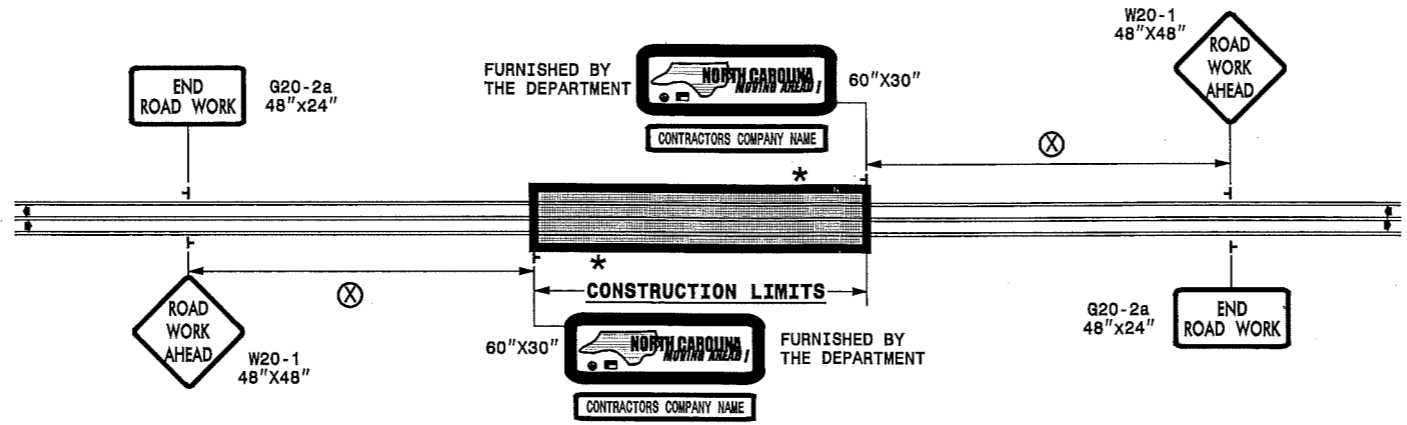
FURNISHED BY THE DEPARTMENT



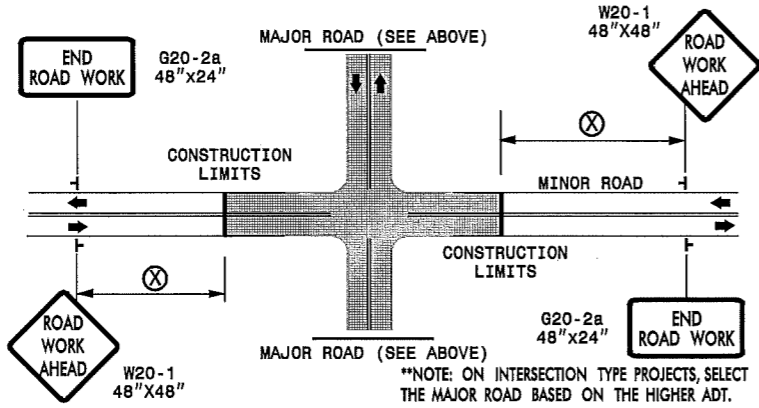
60"x30"

CONTRACTORS COMPANY NAME

60" Max. X 12"



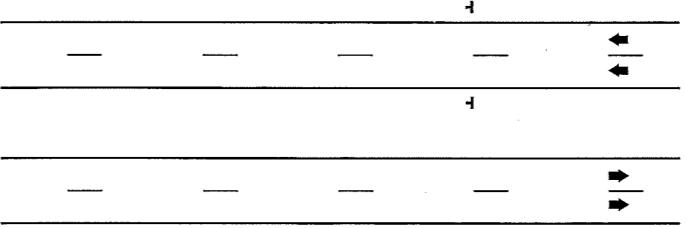
INTERSECTIONS (-Y- LINES)



FREEWAYS/INTERSTATES

DUAL MOUNT "ROAD WORK AHEAD" SIGNS 1,000' IN ADVANCE OF PROJECT LIMITS

DUAL MOUNT "MOVING AHEAD" SIGNS 500' IN ADVANCE OF PROJECT LIMITS



GENERAL NOTES

- USE FLUORESCENT ORANGE SHEETING (TYPE VII OR HIGHER) ON ALL ADVANCE WORK ZONE SIGNS.
- DO NOT INSTALL ADVANCE WARNING SIGNS MORE THAN 3 DAYS PRIOR TO BEGINNING OF WORK.
- SIGNS SHOWN ARE REQUIRED FOR WORK ZONES THAT WILL REMAIN IN EFFECT OVERNIGHT. FOR SHORT-TERM DAILY MAINTENANCE TYPE OPERATIONS, THIS SIGNING APPLICATION IS OPTIONAL; MAY USE ONLY APPLICABLE ROADWAY STANDARD DRAWINGS INSTEAD. HOWEVER, IF THIS SIGNING APPLICATION IS USED, SIGNS MAY BE PORTABLE MOUNTED. USE PORTABLE WORK ZONE SIGNS ONLY WITH PORTABLE WORK ZONE SIGN STANDS SPECIFICALLY DESIGNED FOR ONE ANOTHER. PORTABLE WORK ZONE SIGNS MAY BE ROLL UP OR APPROVED COMPOSITE.
- ALL SIGN SPACING DIMENSIONS ARE APPROXIMATE, FIELD ADJUST AS NECESSARY OR AS DIRECTED.
- USE 3LB STEEL U-CHANNEL POST OR 4" X 4" WOOD POST FOR ALL WORK ZONE SIGNS. 3LB STEEL U-CHANNEL POSTS MUST MEET THE REQUIREMENTS OF STANDARD SPECIFICATION SECTION 1094-1(B), MAY BE GALVANIZED STEEL, OR MAY BE PAINTED GREEN BY THE POST MANUFACTURER. SQUARE STEEL TUBING POSTS HAVING EQUIVALENT STRENGTH OF THE 3 LB STEEL U-CHANNEL POST ARE ALSO ACCEPTABLE FOR USE. ERECT SIGNS PER ROADWAY STANDARD DRAWING 1110.01. PAYMENT FOR WOOD POSTS, 3LB STEEL U-CHANNEL AND SQUARE STEEL TUBING POSTS WITH SIGNS WILL BE MADE ACCORDING TO STANDARD SPECIFICATION "WORK ZONE SIGNS" SECTION 1110.
- WHEN NECESSARY, USE SPLICING IN ACCORDANCE WITH ROADWAY STANDARD DRAWING NO. 1110.01. REMOVE ENTIRE POST WHEN REMOVING SIGNS WITH SPLICED POSTS.
- DO NOT BACK BRACE SIGN SUPPORTS.

LEGEND

┆ STATIONARY SIGN

◀ DIRECTION OF TRAFFIC FLOW

DETAIL DRAWING FOR ADVANCE
WARNING WORK ZONE SIGNS

APPROVED: _____ DATE: _____	ADVANCE WARNING WORK ZONE SIGNS FOR "MOVING AHEAD"	
SEAL	SCALE: NONE	REVISIONS
	DATE: 07/03	11/04
	DWG. BY: JSK	12/04
	DESIGN BY: JSK	02/08
REVIEWED BY: SK	CADD FILE	