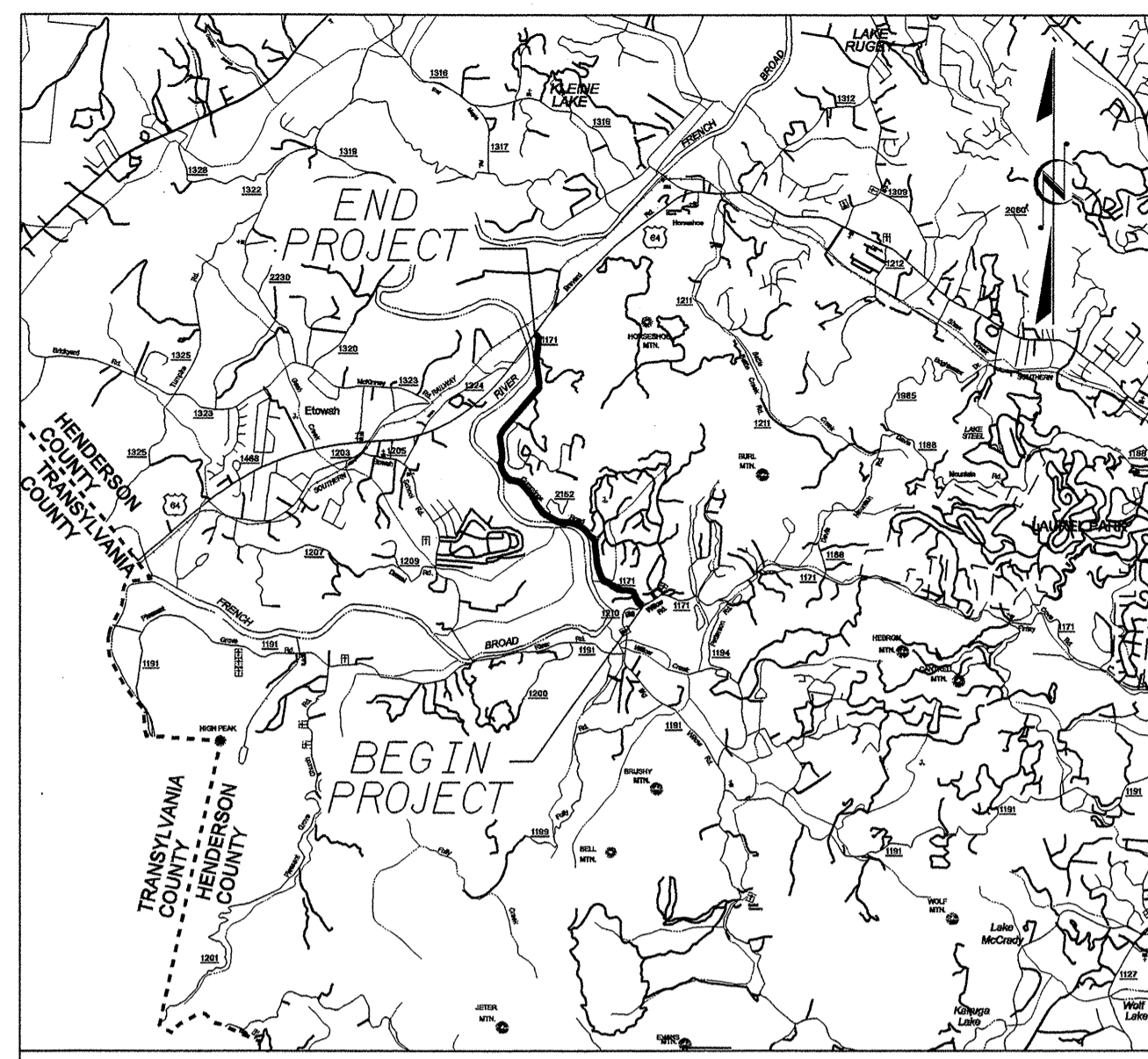


09-JUN-2008 09:19 s:\specdes\utilities\rbw\jes\14c.045116\14c.045116_ut_title_uol_psh.dgn \$\$\$USERNAME\$\$\$

PROJECT: 14C.045116

CONTRACT: C202060

See Sheet 1-A For Index of Sheets



VICINITY MAP

STATE OF NORTH CAROLINA
DIVISION OF HIGHWAYS

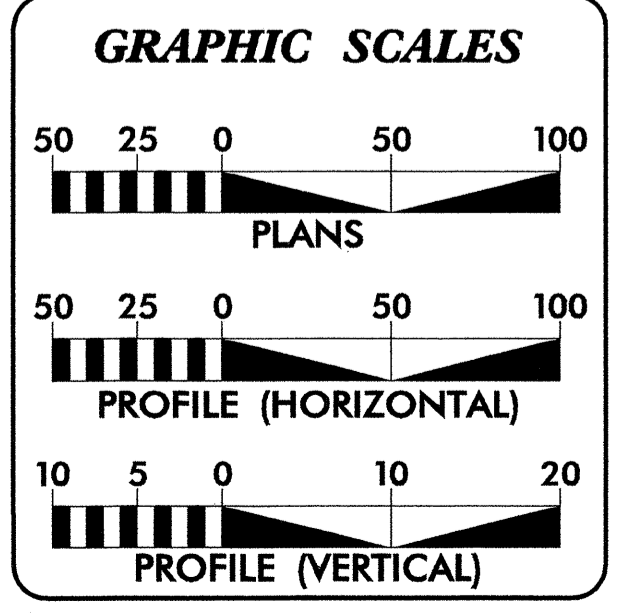
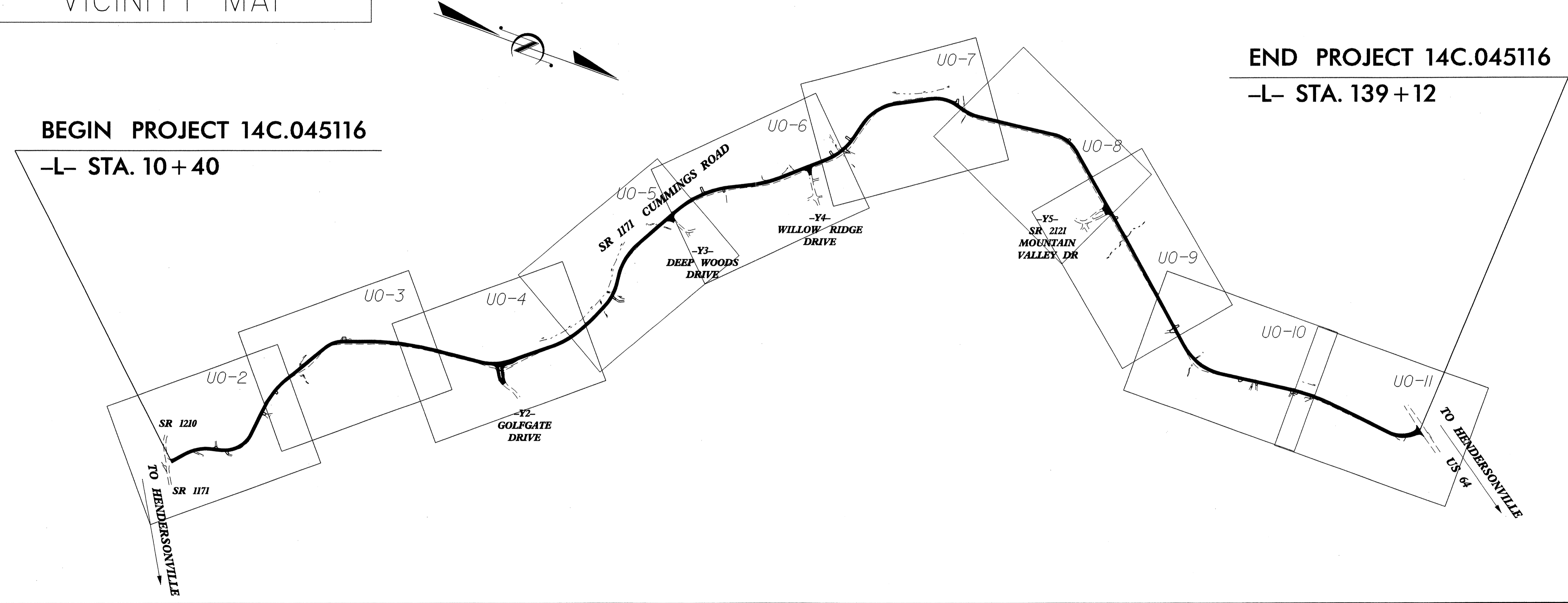
**UTILITY BY OTHERS PLANS
HENDERSON COUNTY**

**LOCATION: SR 1171 (CUMMINGS ROAD) FROM
SR 1210 (BIG WILLOW ROAD) TO
US 64 (BREVARD ROAD)**
TYPE OF WORK: UTILITIES BY OTHERS

PROJECT	SHEET NO.
14C.045116	UO-1

BEGIN PROJECT 14C.045116
-L- STA. 10+40

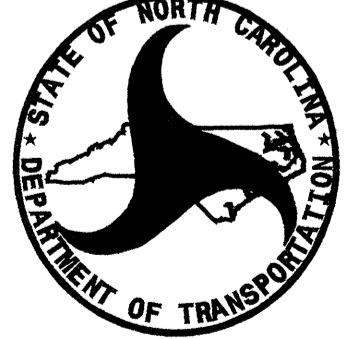
END PROJECT 14C.045116
-L- STA. 139+12



INDEX OF SHEETS

SHEET NO.	DESCRIPTION
UO-1	TITLE SHEET
UO-2 THRU UO-11	UTILITY BY OTHERS PLAN SHEETS

- UTILITY OWNERS ON PROJECT**
- (1) TELEPHONE: AT&T
 - (2) POWER DISTRIBUTION: DUKE ENERGY
 - (3) GAS: PUBLIC SERVICE OF NORTH CAROLINA
 - (4) CABLEVISION: MEDIACOM COMMUNICATIONS SOUTHEAST
 - (5) WATER: CITY OF HENDERSONVILLE



PREPARED IN THE OFFICE OF:
**DIVISION OF HIGHWAYS
PROJECT SERVICES
UTILITY SECTION**

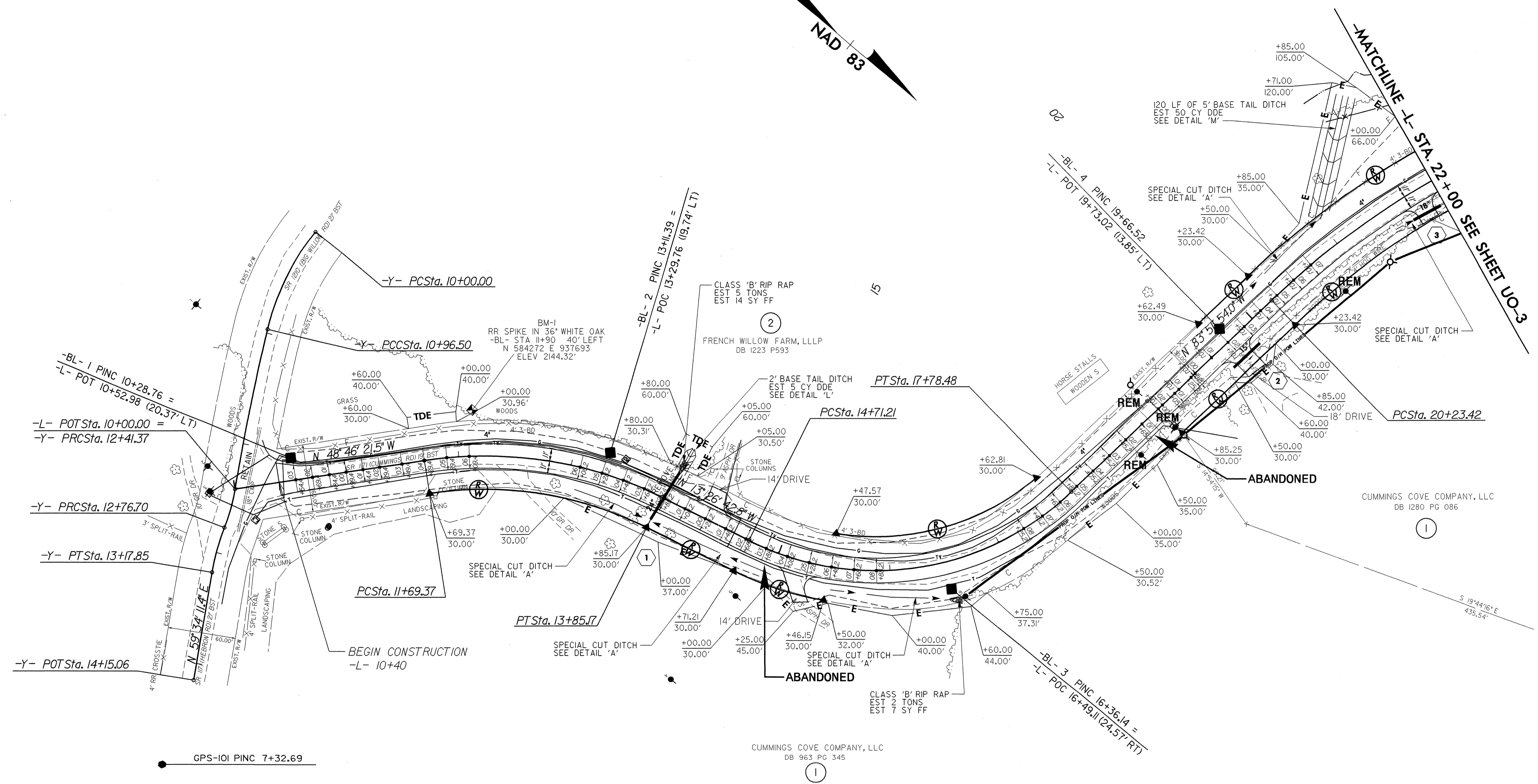
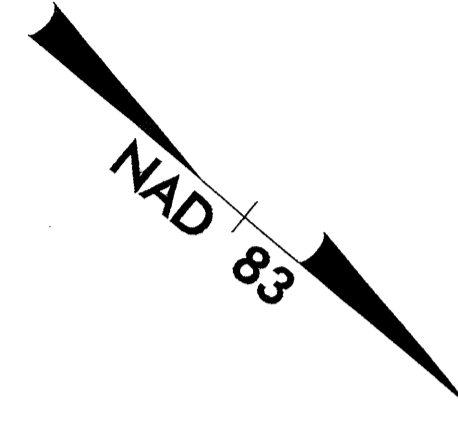
1591 MAIL SERVICES CENTER
RALEIGH, NC 27699-1591
PHONE (919) 250-4128
FAX (919) 250-4119

Roger Worthington, P.E. UTILITIES SECTION ENGINEER
R.B. Wilkins, P.E. UTILITIES SQUAD LEADER PROJECT ENGINEER
James E. Swinson UTILITIES PROJECT DESIGNER

UTILITIES BY OTHERS

NOTE:
ALL PROPOSED UTILITY WORK
SHOWN ON THIS SHEET WILL
BE DONE BY OTHERS

5/14/99



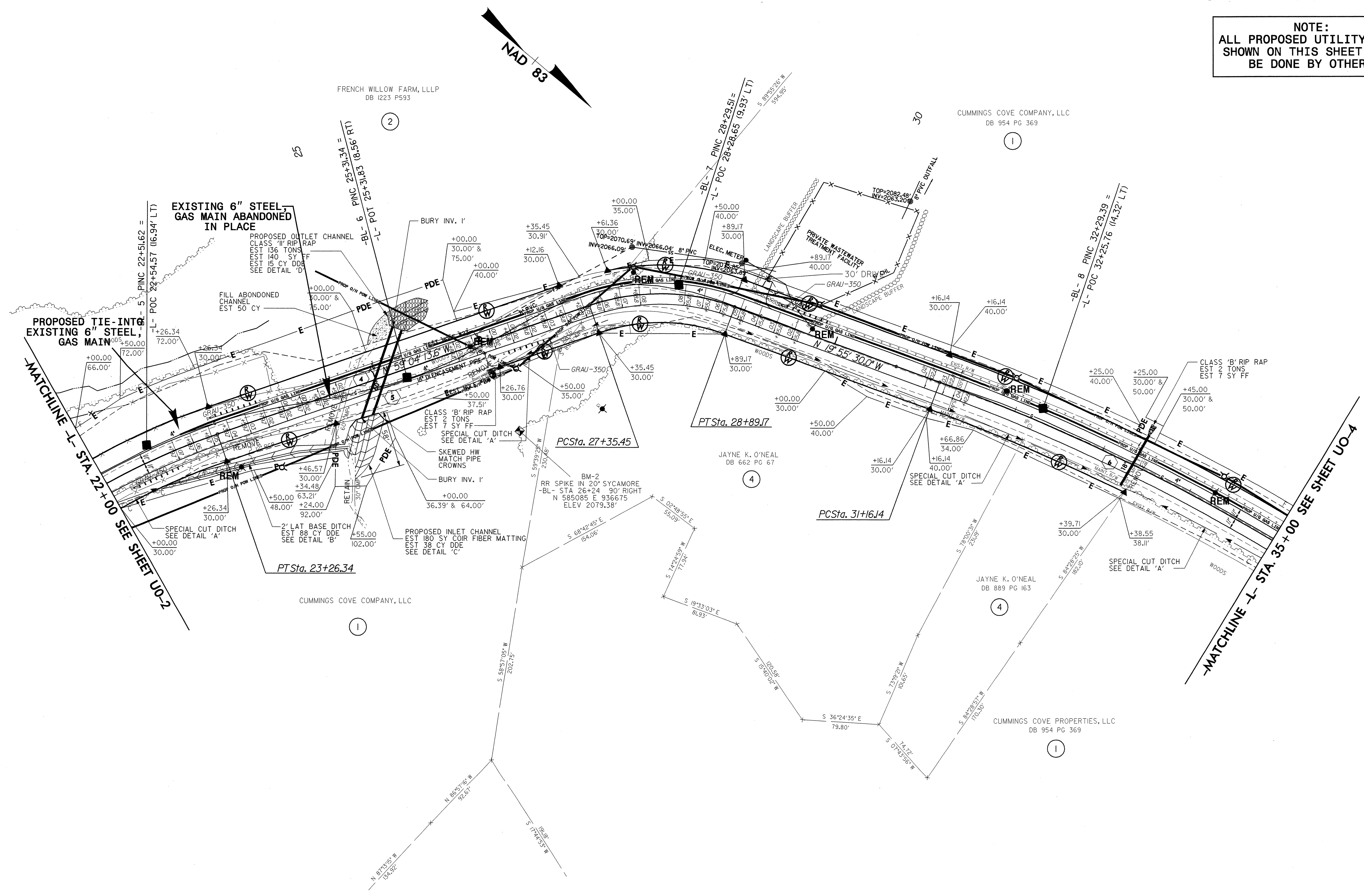
09-JUN-2008 08:46 045116.14C.045116.Ut.-4.U02.psh.dgn

UTILITIES BY OTHERS

NOTE:
ALL PROPOSED UTILITY WORK
SHOWN ON THIS SHEET WILL
BE DONE BY OTHERS

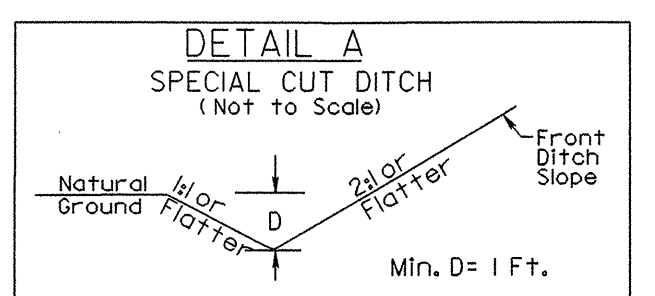
5/14/99

09-JUN-2008 14:57
S:\A11\14C\045116\14C_045116_Lit_5_U03_psh.dgn
*****FRANCO*****

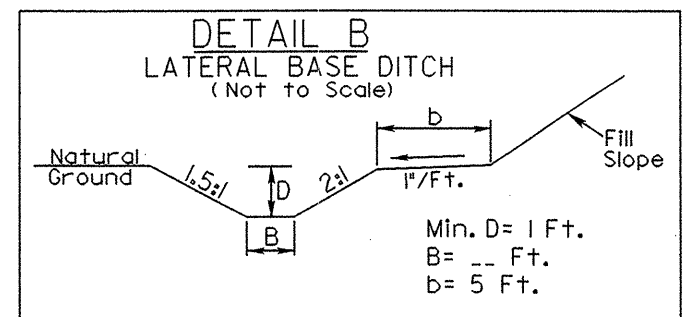


UTILITIES BY OTHERS

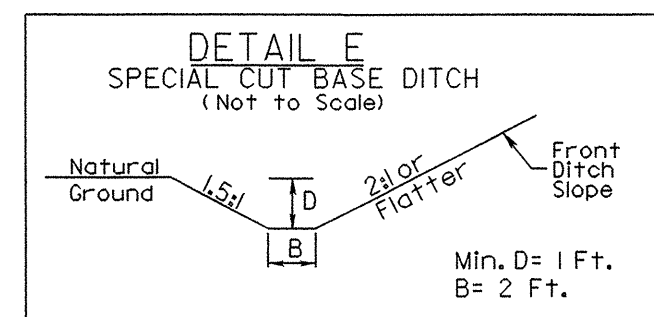
NOTE:
ALL PROPOSED UTILITY WORK
SHOWN ON THIS SHEET WILL
BE DONE BY OTHERS



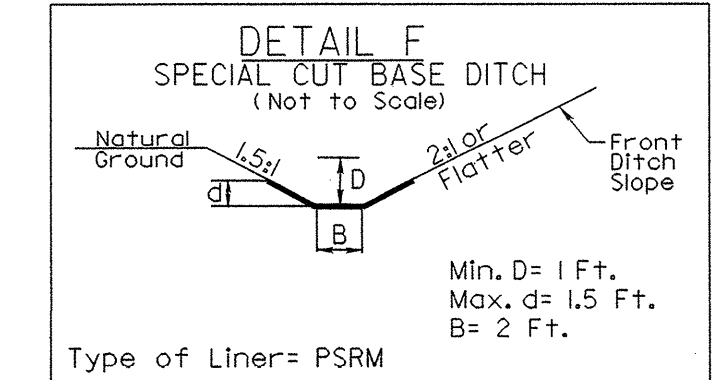
STATION TO STATION	SIDE
35+00 - 35+50	RT
35+50 - 36+60	RT
36+60 - 38+00	RT
45+50 - 47+00	RT



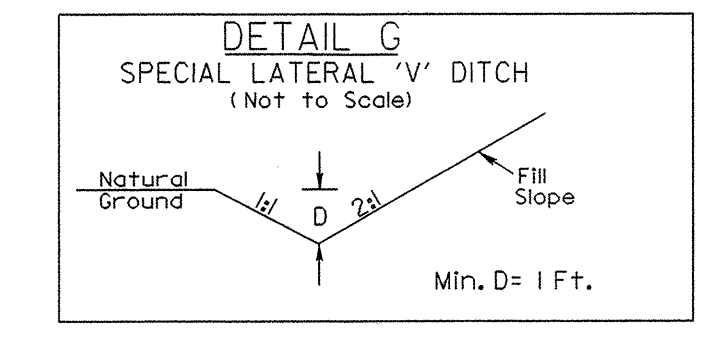
STATION TO STATION	SIDE	BASE
47+75 - 48+50	RT	2'



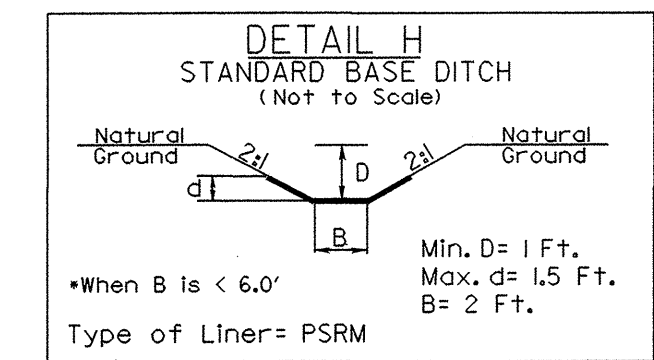
STATION TO STATION	SIDE
47+00 - 47+50	RT



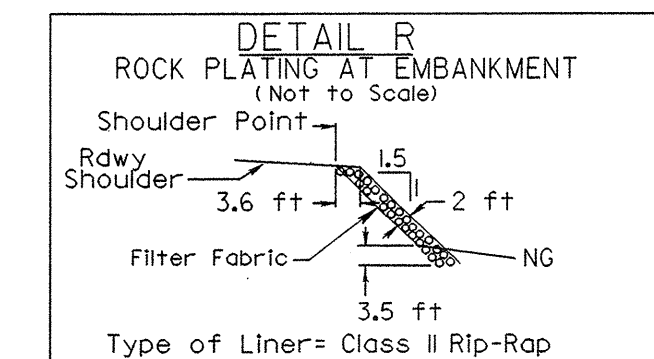
STATION TO STATION	SIDE
47+50 - 47+75	RT



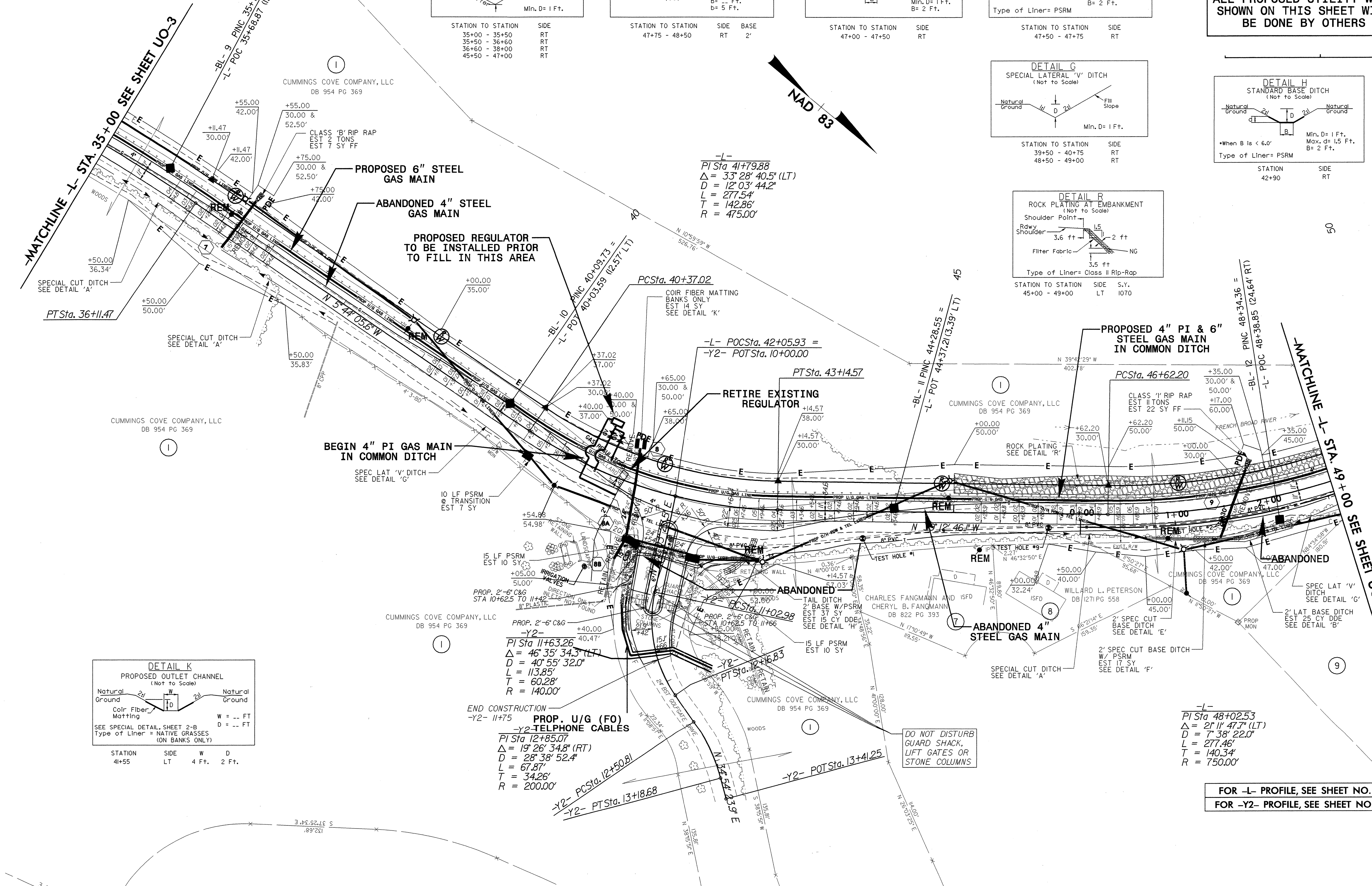
STATION TO STATION	SIDE
39+50 - 40+75	RT
48+50 - 49+00	RT



STATION	SIDE
42+90	RT



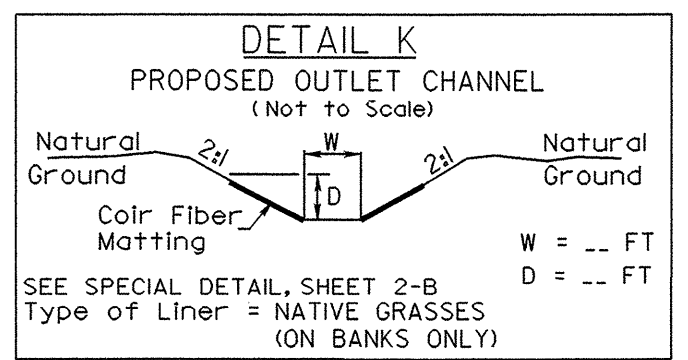
STATION TO STATION	SIDE	S.Y.
45+00 - 49+00	LT	1070



-L-
PI Sta 41+79.88
Δ = 33° 28' 40.5" (LT)
D = 12' 03" 44.2"
L = 277.54'
T = 142.86'
R = 475.00'

-Y2-
PI Sta 11+63.26
Δ = 46° 35' 34.3" (LT)
D = 40' 55" 32.0"
L = 113.85'
T = 60.28'
R = 140.00'

-L-
PI Sta 48+02.53
Δ = 2° 11' 47.7" (LT)
D = 7' 38" 22.0"
L = 277.46'
T = 140.34'
R = 750.00'



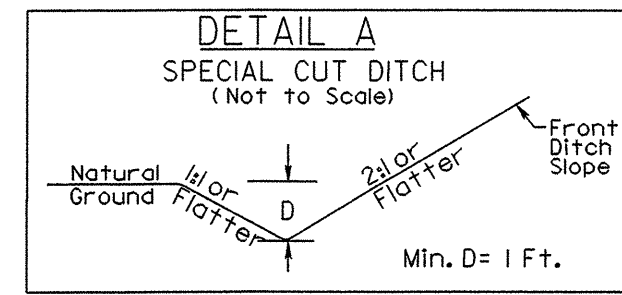
STATION	SIDE	W	D
41+55	LT	4 Ft.	2 Ft.

FOR -L- PROFILE, SEE SHEET NO. 15
FOR -Y2- PROFILE, SEE SHEET NO. 19

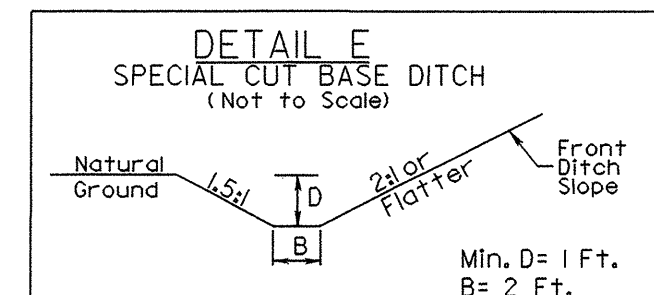
5/14/99
09-JUN-2008 14:56
045116\14C.045116.Ut_7.U05.psh.dgn

UTILITIES BY OTHERS

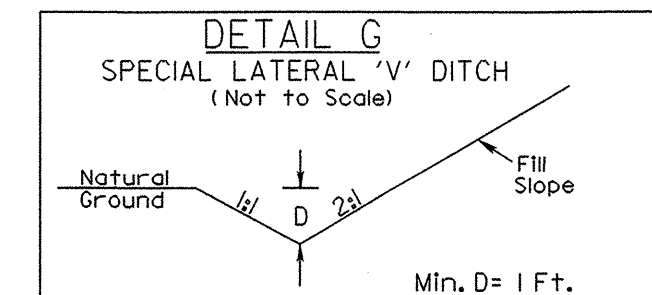
NOTE:
ALL PROPOSED UTILITY WORK
SHOWN ON THIS SHEET WILL
BE DONE BY OTHERS



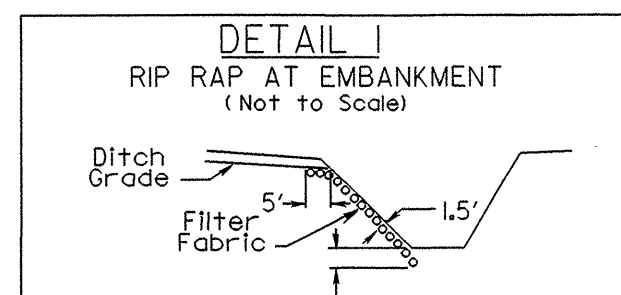
STATION TO STATION	SIDE
52+00 - 53+00	RT
53+75 - 56+00	RT
58+00 - 60+50	RT
61+00 - 63+00	RT



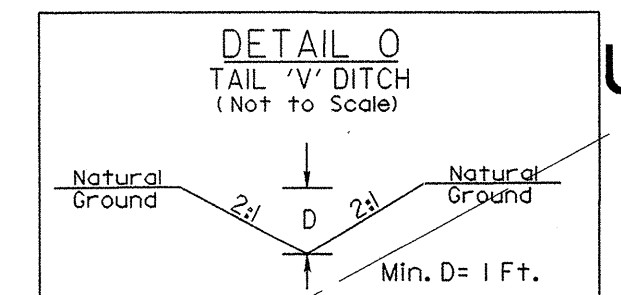
STATION TO STATION	SIDE
60+60 - 61+00	RT



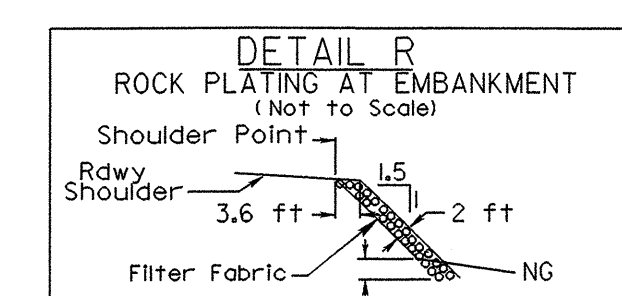
STATION TO STATION	SIDE
49+00 - 51+00	RT



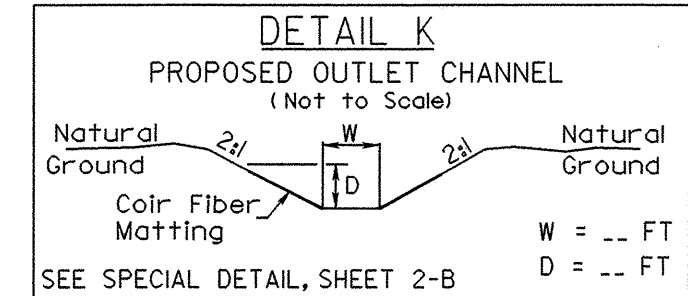
STATION	SIDE
51+85	RT
60+50	RT



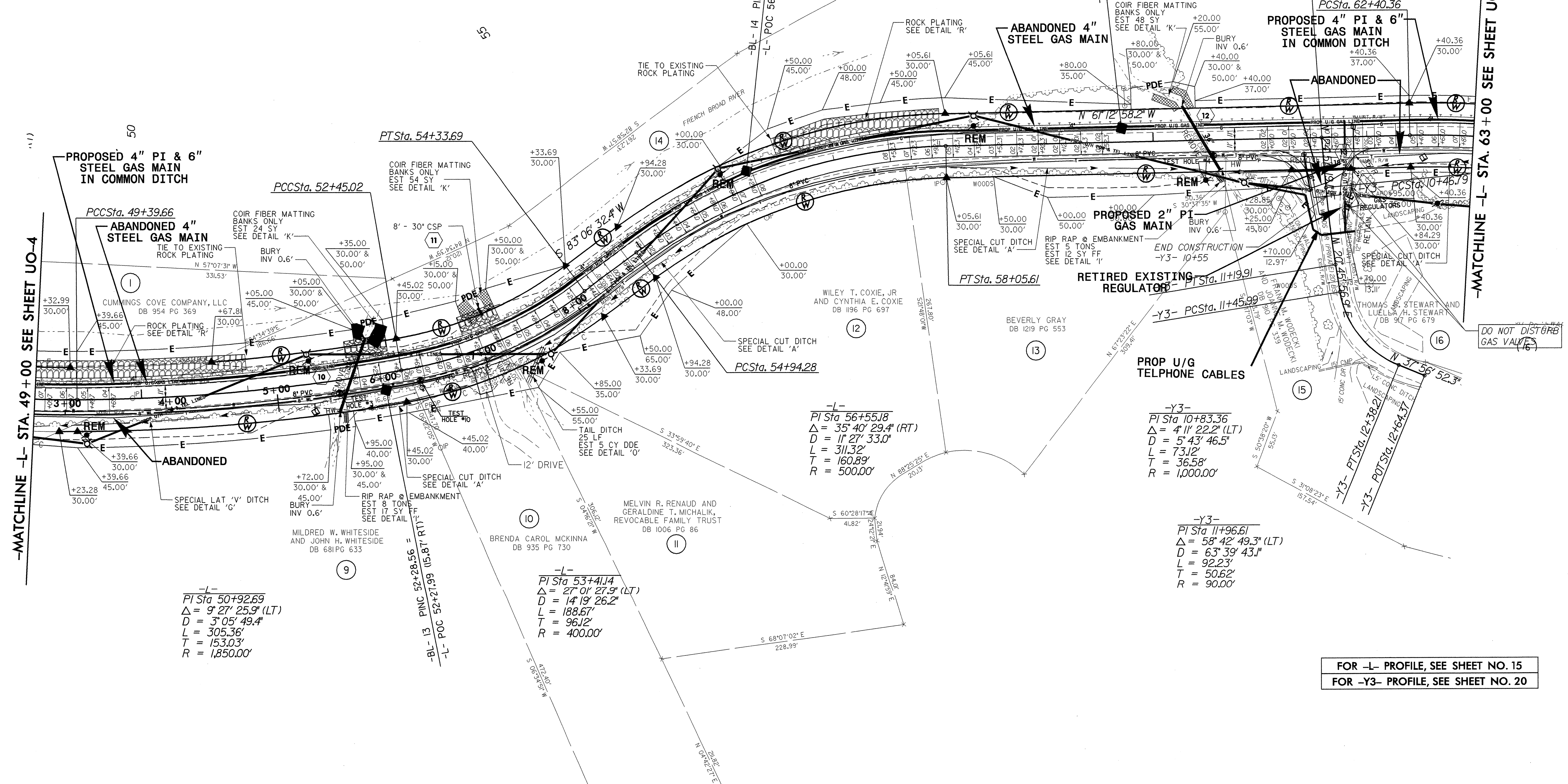
STATION	SIDE
54+75	RT



STATION TO STATION	SIDE	S.Y.
49+00 - 51+00	LT	670
51+95 - 52+35	LT	110
53+10 - 53+50	LT	120
56+50 - 58+00	LT	415



STATION	SIDE	W	D
52+15	LT	2 Ft.	3 Ft.
53+30	LT	2 Ft.	6 Ft.
60+25	LT	3 Ft.	3 Ft.



-MATCHLINE -L- STA. 49 + 00 SEE SHEET UO-4

-MATCHLINE -L- STA. 63 + 00 SEE SHEET UO-6

-L-
PI Sta 50+92.69
 $\Delta = 9^{\circ} 27' 25.9''$ (LT)
D = 3' 05' 49.4"
L = 305.36'
T = 153.03'
R = 1,850.00'

-L-
PI Sta 53+41.14
 $\Delta = 27^{\circ} 01' 27.9''$ (LT)
D = 14' 19' 26.2"
L = 188.67'
T = 96.12'
R = 400.00'

-L-
PI Sta 56+55.8
 $\Delta = 35^{\circ} 40' 29.4''$ (RT)
D = 11' 27' 33.0"
L = 311.32'
T = 160.89'
R = 500.00'

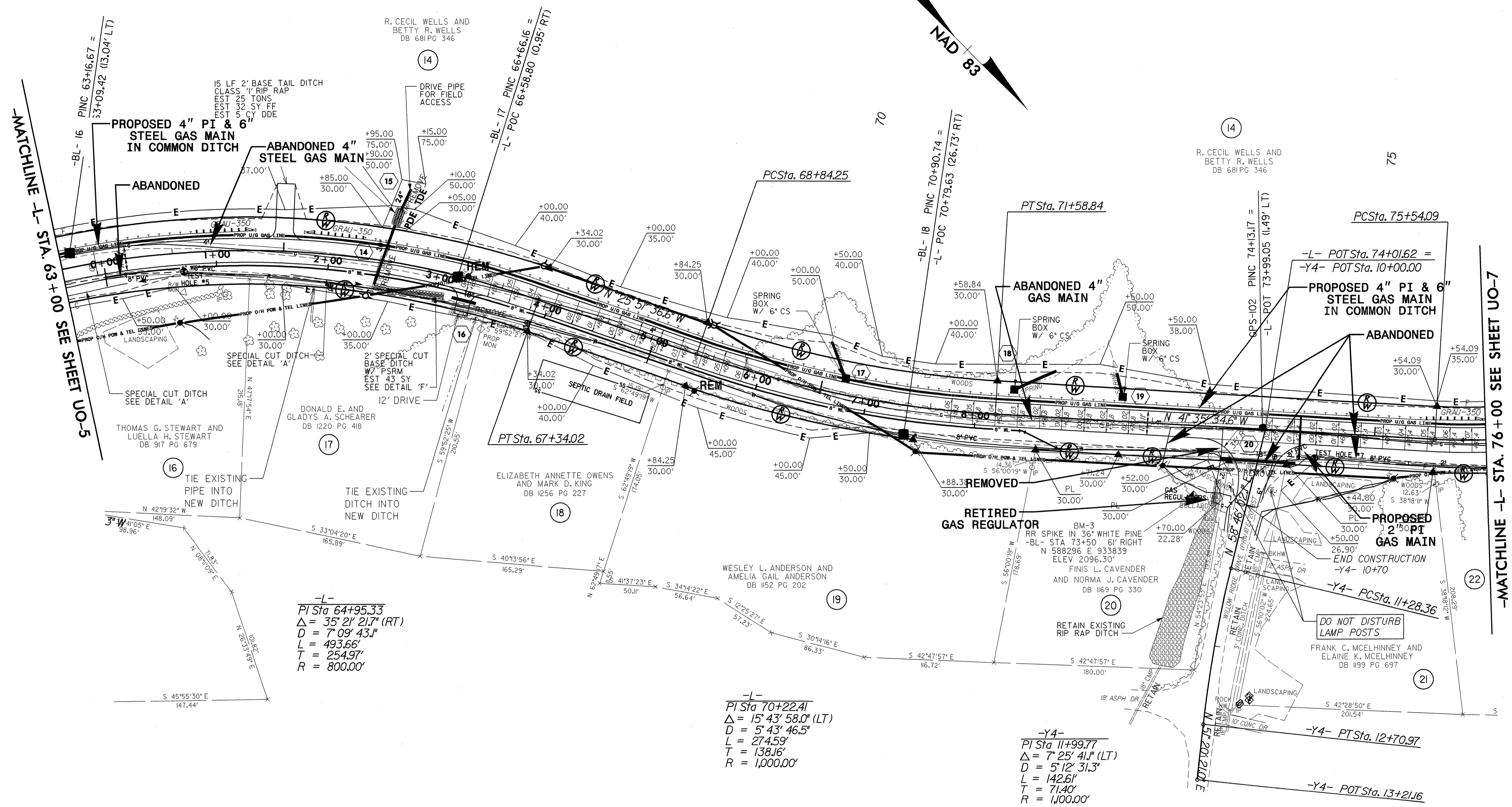
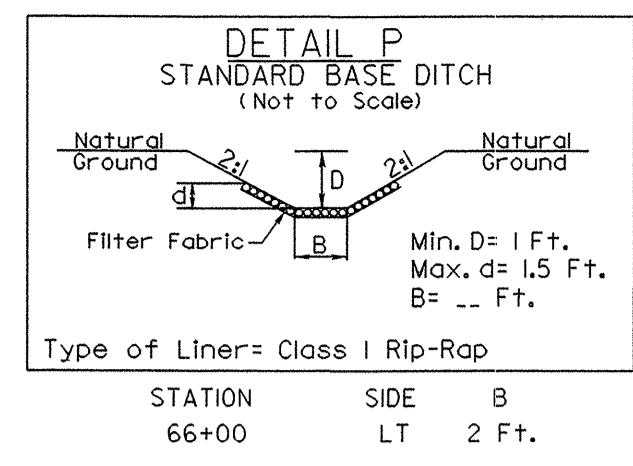
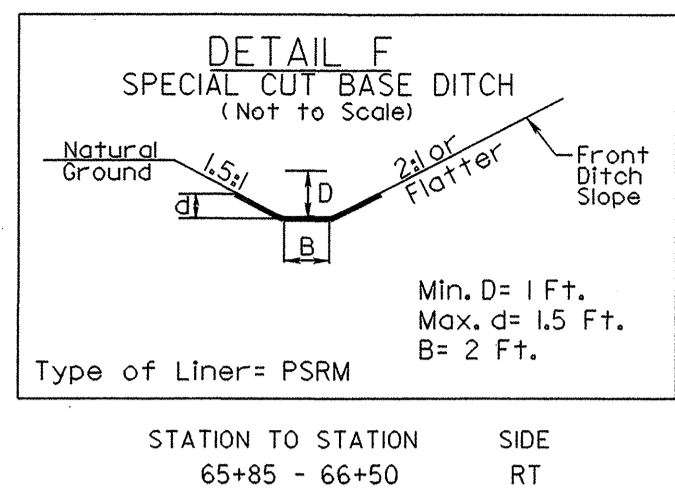
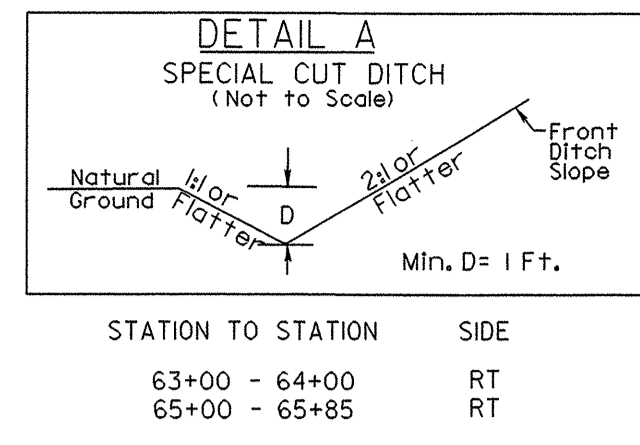
-Y3-
PI Sta 10+83.36
 $\Delta = 4^{\circ} 11' 22.2''$ (LT)
D = 5' 43' 46.5"
L = 73.12'
T = 36.58'
R = 1,000.00'

-Y3-
PI Sta 11+96.61
 $\Delta = 58^{\circ} 42' 49.3''$ (LT)
D = 63' 39' 43.1"
L = 92.23'
T = 50.62'
R = 90.00'

FOR -L- PROFILE, SEE SHEET NO. 15
FOR -Y3- PROFILE, SEE SHEET NO. 20

UTILITIES BY OTHERS

NOTE:
ALL PROPOSED UTILITY WORK
SHOWN ON THIS SHEET WILL
BE DONE BY OTHERS



-L-
PI Sta 64+95.33
Δ = 35° 21' 21.7" (RT)
D = 7' 09' 43.1"
L = 493.66'
T = 254.97'
R = 800.00'

-L-
PI Sta 70+22.41
Δ = 15° 43' 58.0" (LT)
D = 5' 43' 46.5"
L = 274.59'
T = 138.16'
R = 1,000.00'

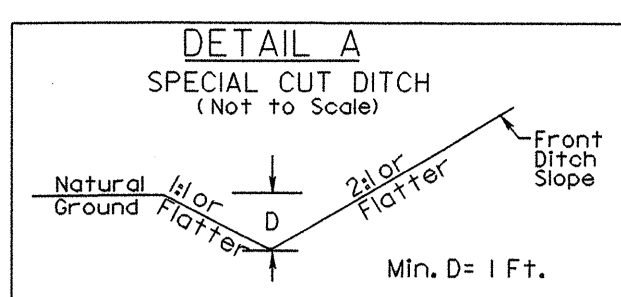
-Y4-
PI Sta 11+99.77
Δ = 7° 25' 41.1" (LT)
D = 5' 12' 31.3"
L = 142.61'
T = 71.40'
R = 1,000.00'

FOR -L- PROFILE, SEE SHEET NO. 16
FOR -Y4- PROFILE, SEE SHEET NO. 20

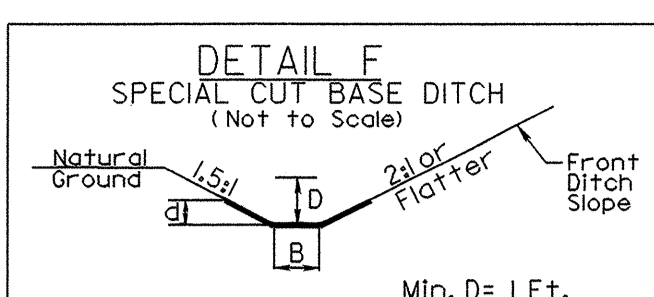
09-JUN-2008 14:55 045116\14C.045116_Ut_B.U06_psh.dgn

UTILITIES BY OTHERS

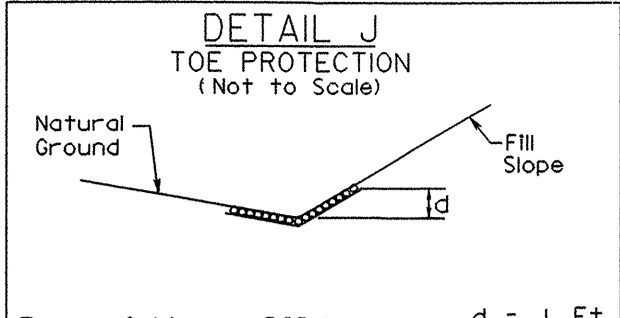
NOTE:
ALL PROPOSED UTILITY WORK
SHOWN ON THIS SHEET WILL
BE DONE BY OTHERS



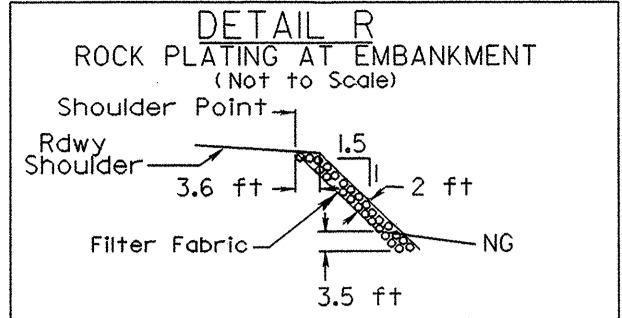
STATION TO STATION SIDE
83+00 - 84+50 RT
84+50 - 85+00 RT
89+50 - 90+00 RT



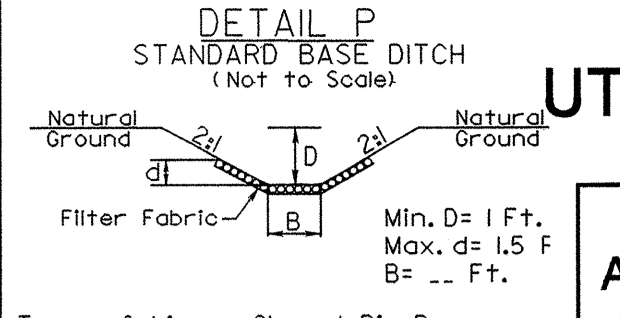
STATION TO STATION SIDE
89+00 - 89+50 RT



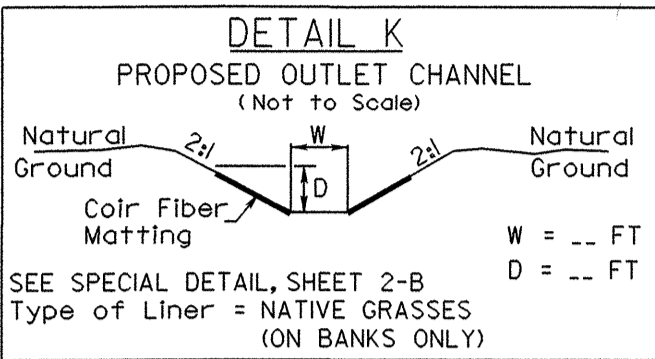
STATION TO STATION SIDE
77+00 - 77+25 RT



STATION TO STATION SIDE S.Y.
81+50 - 84+70 LT 1100



STATION TO STATION SIDE
88+90 LT 4 Ft.

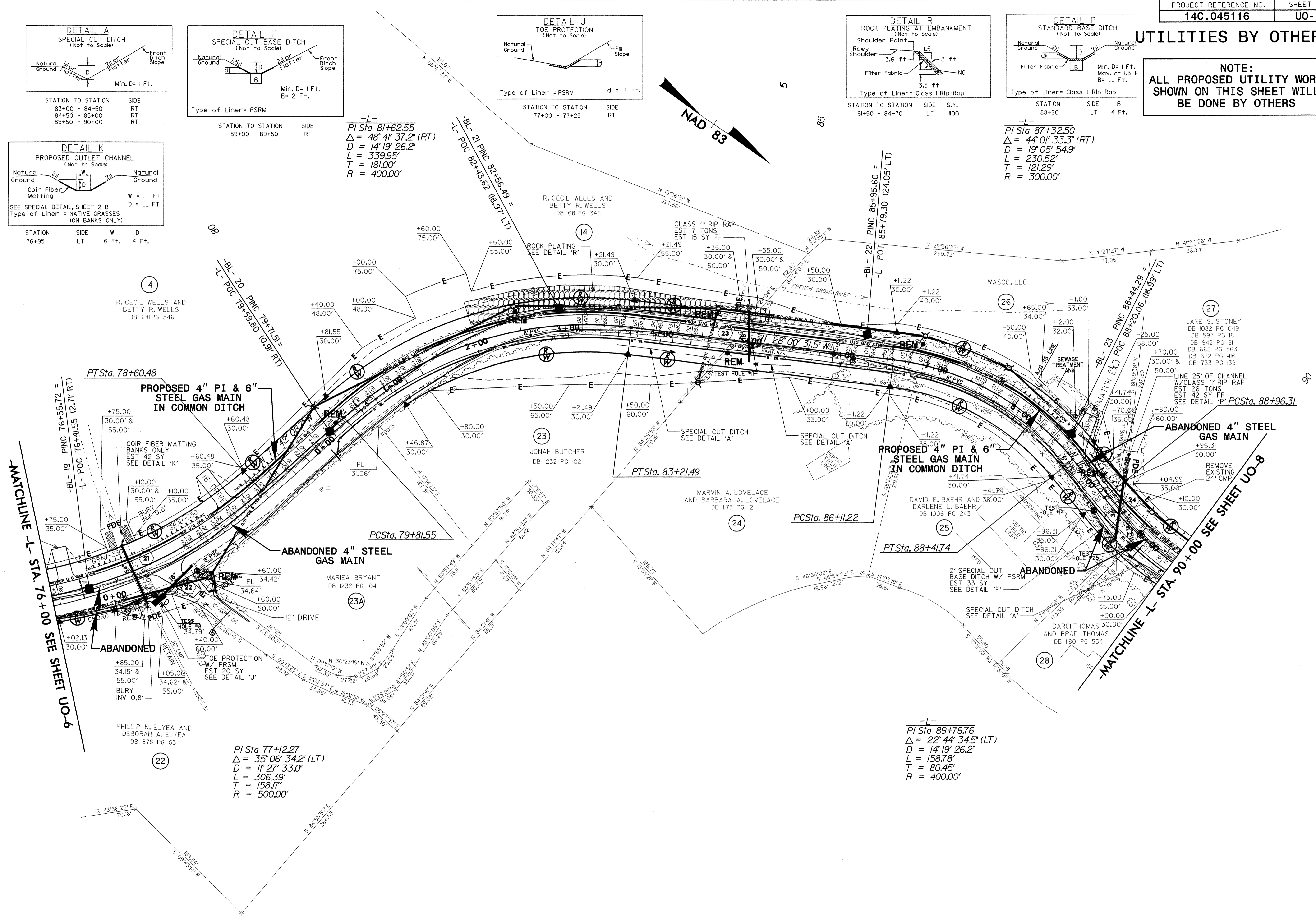


STATION TO STATION SIDE
76+95 LT 6 Ft. 4 Ft.

PI Sta 81+62.55
Δ = 48° 41' 37.2" (RT)
D = 14' 19" 26.2"
L = 339.95'
T = 181.00'
R = 400.00'

PI Sta 87+32.50
Δ = 44° 01' 33.3" (RT)
D = 19° 05' 54.9"
L = 230.52'
T = 121.29'
R = 300.00'

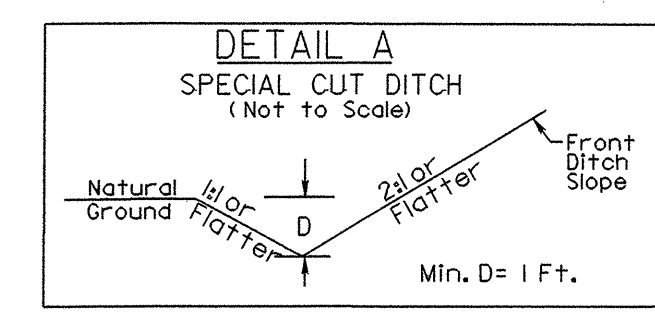
PI Sta 89+76.76
Δ = 22° 44' 34.5" (LT)
D = 14' 19" 26.2"
L = 158.78'
T = 80.45'
R = 400.00'



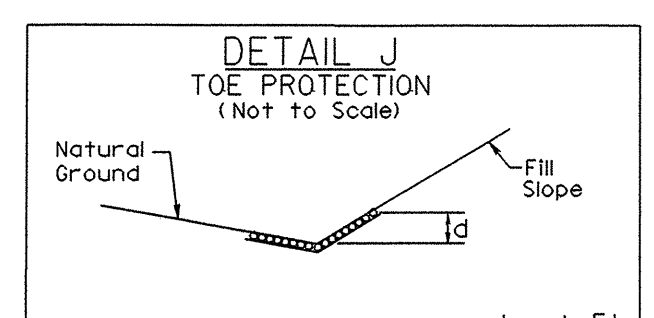
5/14/09 09-JUN-2008 15:38 14C.045116.U0-7.U07.psh.dgn

UTILITIES BY OTHERS

NOTE:
ALL PROPOSED UTILITY WORK SHOWN ON THIS SHEET WILL BE DONE BY OTHERS

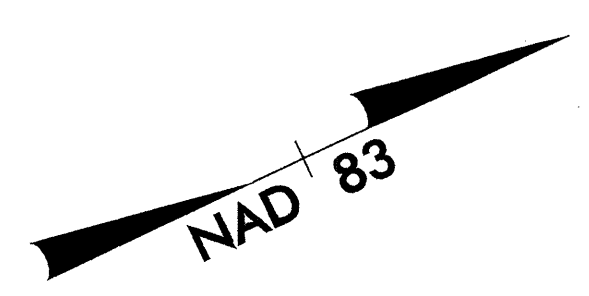


STATION TO STATION	SIDE
90+00 - 91+00	RT
94+00 - 95+95	RT
95+95 - 97+50	RT

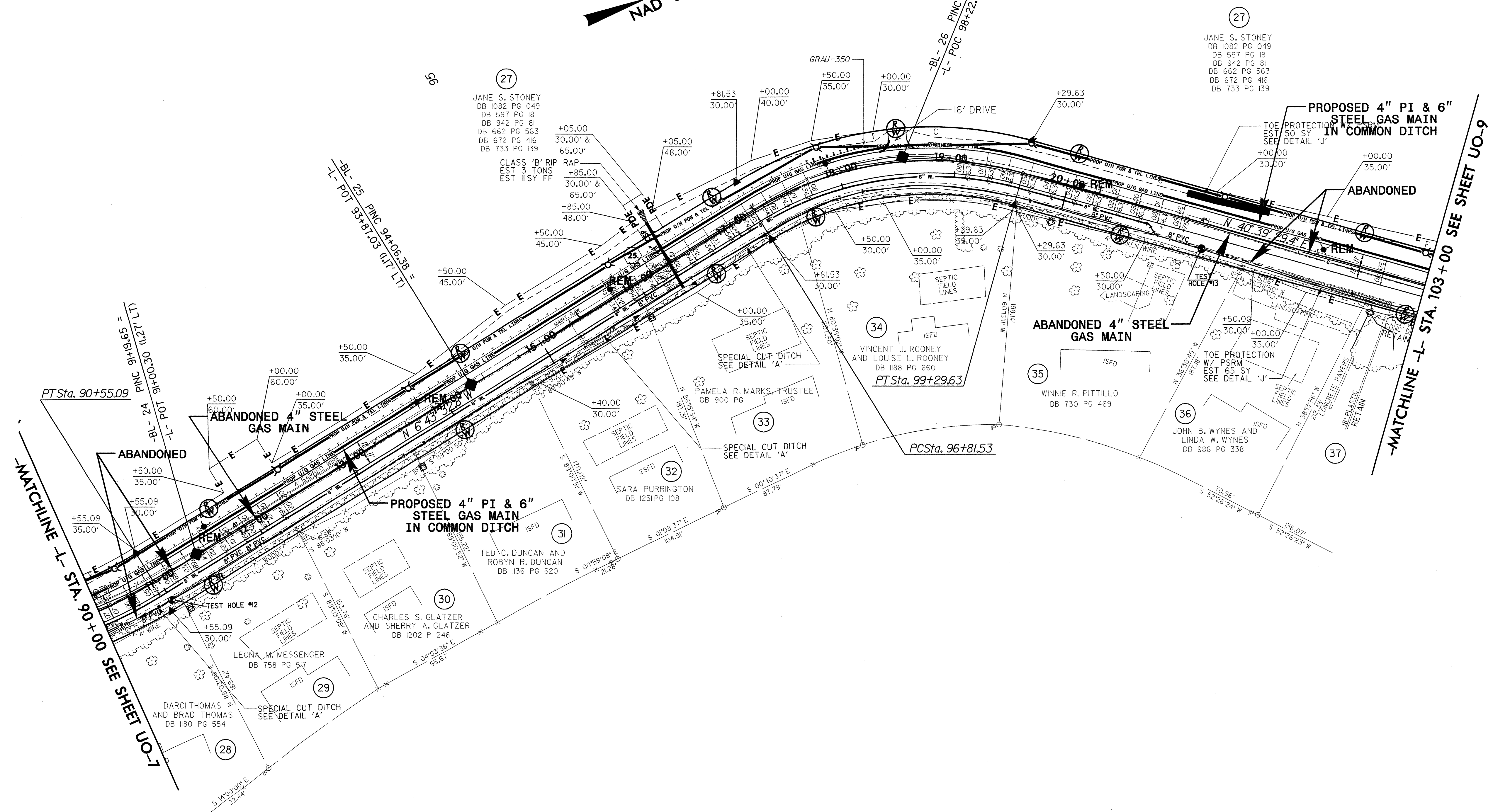


Type of Liner = PSRM d = 1 Ft.

STATION TO STATION	SIDE
100+75 - 101+50	LT
101+50 - 102+75	RT



-L-
PI Sta 98+13.7
 $\Delta = 47^{\circ} 23' 02.2''$ (RT)
 $D = 19^{\circ} 05' 54.9''$
 $L = 248.10'$
 $T = 131.64'$
 $R = 300.00'$

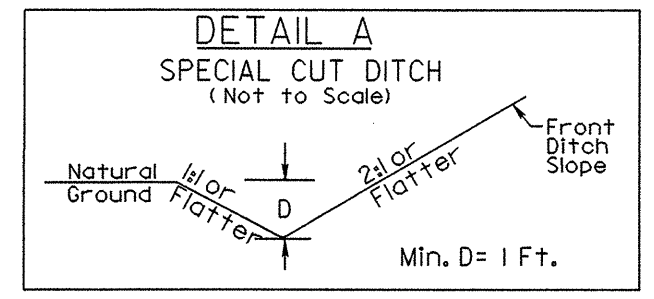


NOTE:
THE EXISTING CUT SLOPE ON PARCELS 28 THRU 31 SHALL NOT BE DISTURBED.

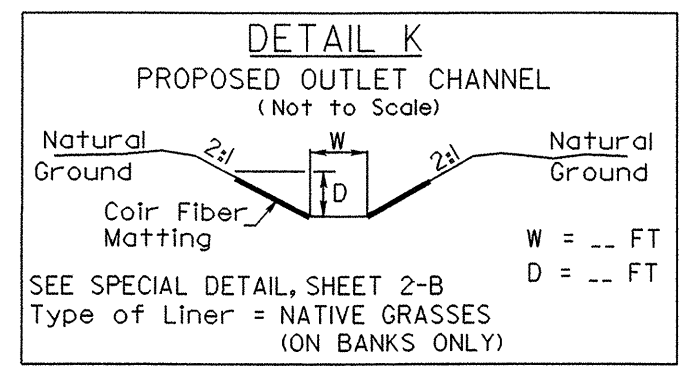
NOTE:
ON PARCELS 32 THRU 37 ALL FLAGGED TREES OR WITHIN THE ORANGE FENCE SHALL NOT BE CUT. THE BRUSH WITHIN THESE TREES CAN STAY.

UTILITIES BY OTHERS

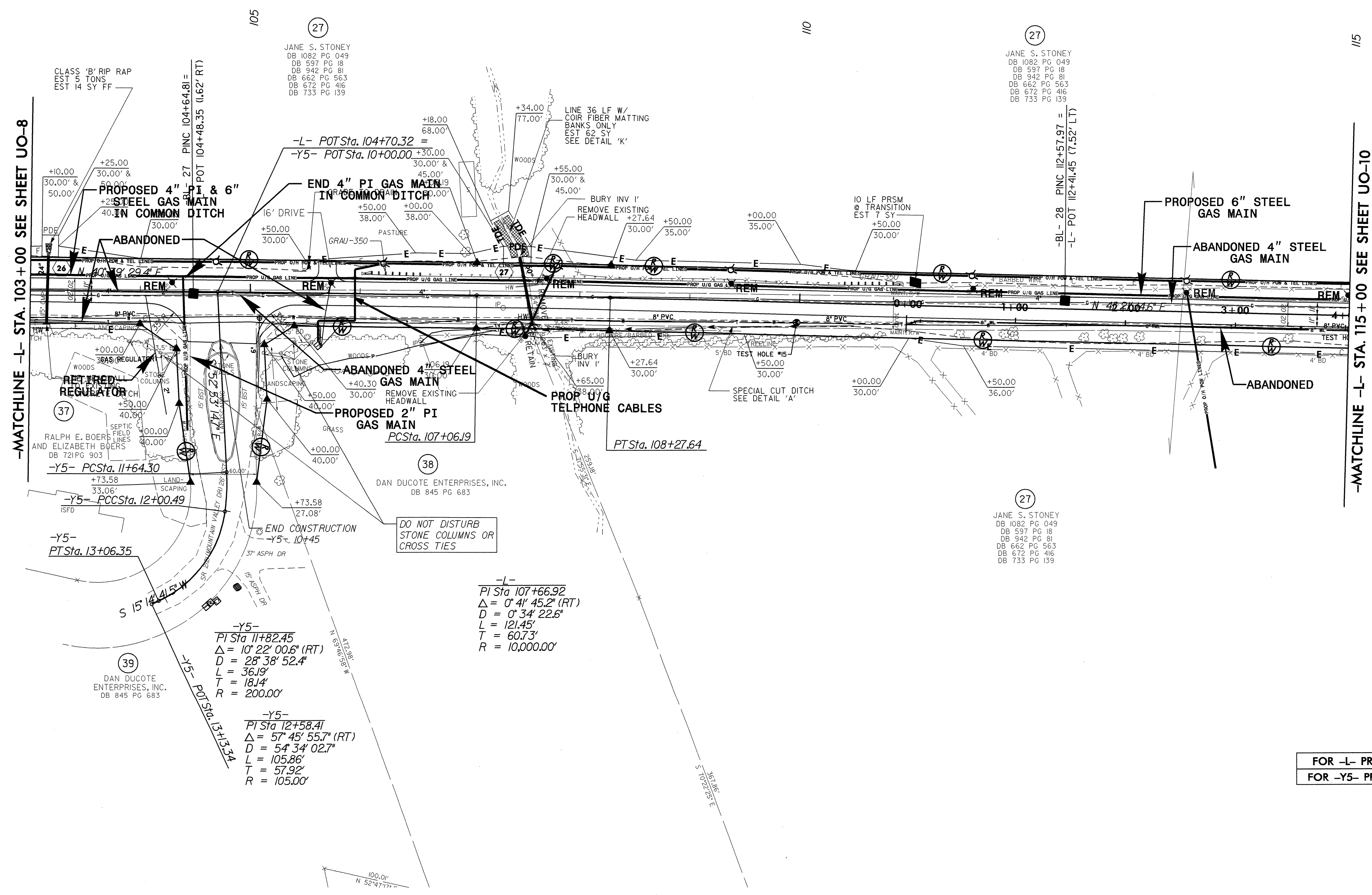
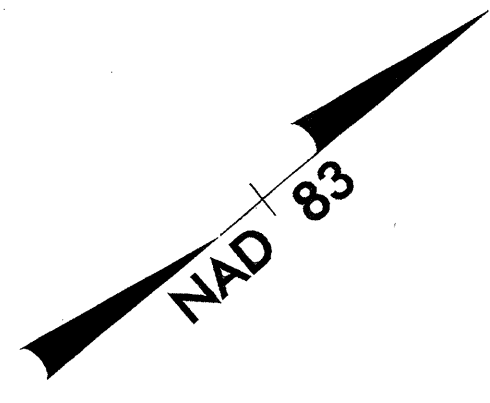
NOTE:
ALL PROPOSED UTILITY WORK
SHOWN ON THIS SHEET WILL
BE DONE BY OTHERS



STATION TO STATION SIDE
107+60 - 110+50 RT



STATION SIDE W D
107+45 LT 4 Ft. 3 Ft.



-MATCHLINE -L- STA. 103 + 00 SEE SHEET UO-8

-MATCHLINE -L- STA. 115 + 00 SEE SHEET UO-10

CLASS 'B' RIP RAP
EST 6 TONS
EST 14 SY FF

PROPOSED 4" PI & 6" STEEL GAS MAIN IN COMMON DITCH

27
JANE S. STONEY
DB 1082 PG 049
DB 597 PG 18
DB 942 PG 81
DB 662 PG 563
DB 672 PG 416
DB 733 PG 139

27
JANE S. STONEY
DB 1082 PG 049
DB 597 PG 18
DB 942 PG 81
DB 662 PG 563
DB 672 PG 416
DB 733 PG 139

37
RATED REGULATOR

ABANDONED 4" STEEL GAS MAIN
REMOVE EXISTING HEADWALL

PROPOSED 2" PI GAS MAIN
PCSta. 107+06.19

PROP U/G TELEPHONE CABLES
PTSta. 108+27.64

38
DAN DUCOTE ENTERPRISES, INC.
DB 845 PG 683

DO NOT DISTURB
STONE COLUMNS OR
CROSS TIES

27
JANE S. STONEY
DB 1082 PG 049
DB 597 PG 18
DB 942 PG 81
DB 662 PG 563
DB 672 PG 416
DB 733 PG 139

-Y5- PCSta. 11+64.30

-Y5- PCCSta. 12+00.49

-Y5- PTSta. 13+06.35

-Y5-
PI Sta 11+82.45
Δ = 10° 22' 00.6" (RT)
D = 28' 38" 52.4"
L = 36.19'
T = 18.1'
R = 200.00'

-Y5-
PI Sta 12+58.41
Δ = 57° 45' 55.7" (RT)
D = 54' 34" 02.7"
L = 105.86'
T = 57.92'
R = 105.00'

-L-
PI Sta 107+66.92
Δ = 0° 41' 45.2" (RT)
D = 0' 34" 22.6"
L = 121.45'
T = 60.73'
R = 10,000.00'

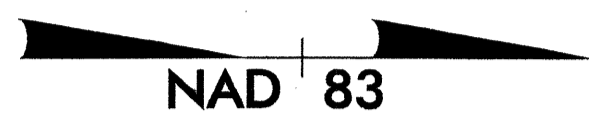
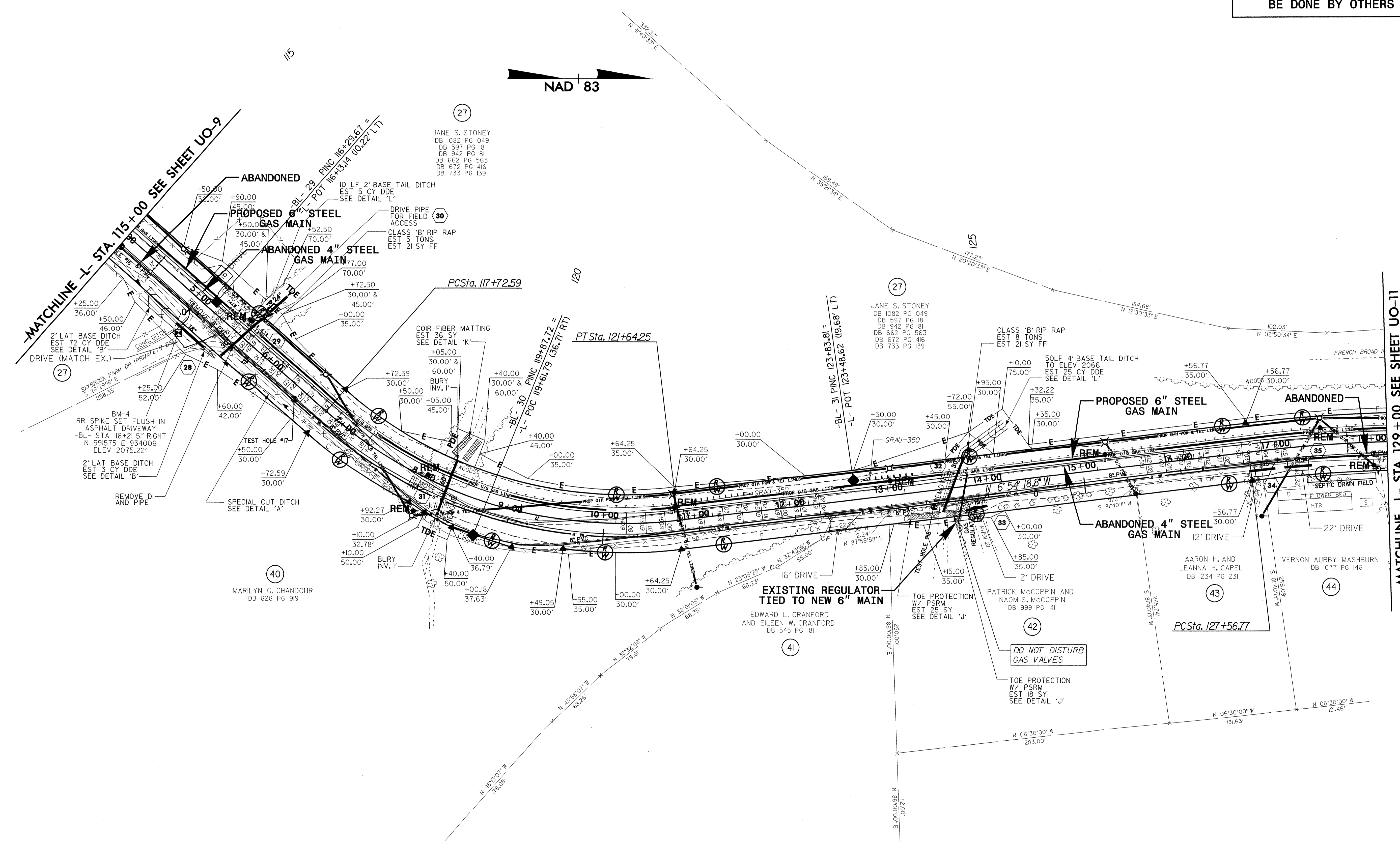
FOR -L- PROFILE, SEE SHEET NO. 17
FOR -Y5- PROFILE, SEE SHEET NO. 20

UTILITIES BY OTHERS

NOTE:
ALL PROPOSED UTILITY WORK
SHOWN ON THIS SHEET WILL
BE DONE BY OTHERS

5/14/99

10-JUN-2008 11:39 045116\14C.045116-U0-10\U010.psh.dgn



(27)
JANE S. STONEY
DB 1082 PG 049
DB 597 PG 18
DB 942 PG 81
DB 662 PG 563
DB 672 PG 416
DB 733 PG 139

(27)
JANE S. STONEY
DB 1082 PG 049
DB 597 PG 18
DB 942 PG 81
DB 662 PG 563
DB 672 PG 416
DB 733 PG 139

(41)
EDWARD L. CRANFORD
AND EILEEN W. CRANFORD
DB 545 PG 181

(40)
MARILYN G. CHANDOUR
DB 626 PG 919

(43)
AARON H. AND
LEANNA H. CAPEL
DB 1234 PG 231

(44)
VERNON AURBY MASHBURN
DB 1077 PG 146

(42)
PATRICK MCCOPPIN AND
NAOMI S. MCCOPPIN
DB 999 PG 141

MATCHLINE -L- STA. 115+00 SEE SHEET UO-9
ABANDONED
PROPOSED 6" STEEL GAS MAIN
ABANDONED 4" STEEL GAS MAIN
10 LF 2" BASE TAIL DITCH
EST 5 CY DDE
SEE DETAIL 'L'
DRIVE PIPE FOR FIELD ACCESS
CLASS 'B' RIP RAP
EST 5 TONS
EST 21 SY FF

PROPOSED 6" STEEL GAS MAIN
SOLF 4" BASE TAIL DITCH
TO ELEV 2066
EST 25 CY DDE
SEE DETAIL 'L'

ABANDONED 4" STEEL GAS MAIN
12' DRIVE

DO NOT DISTURB GAS VALVES

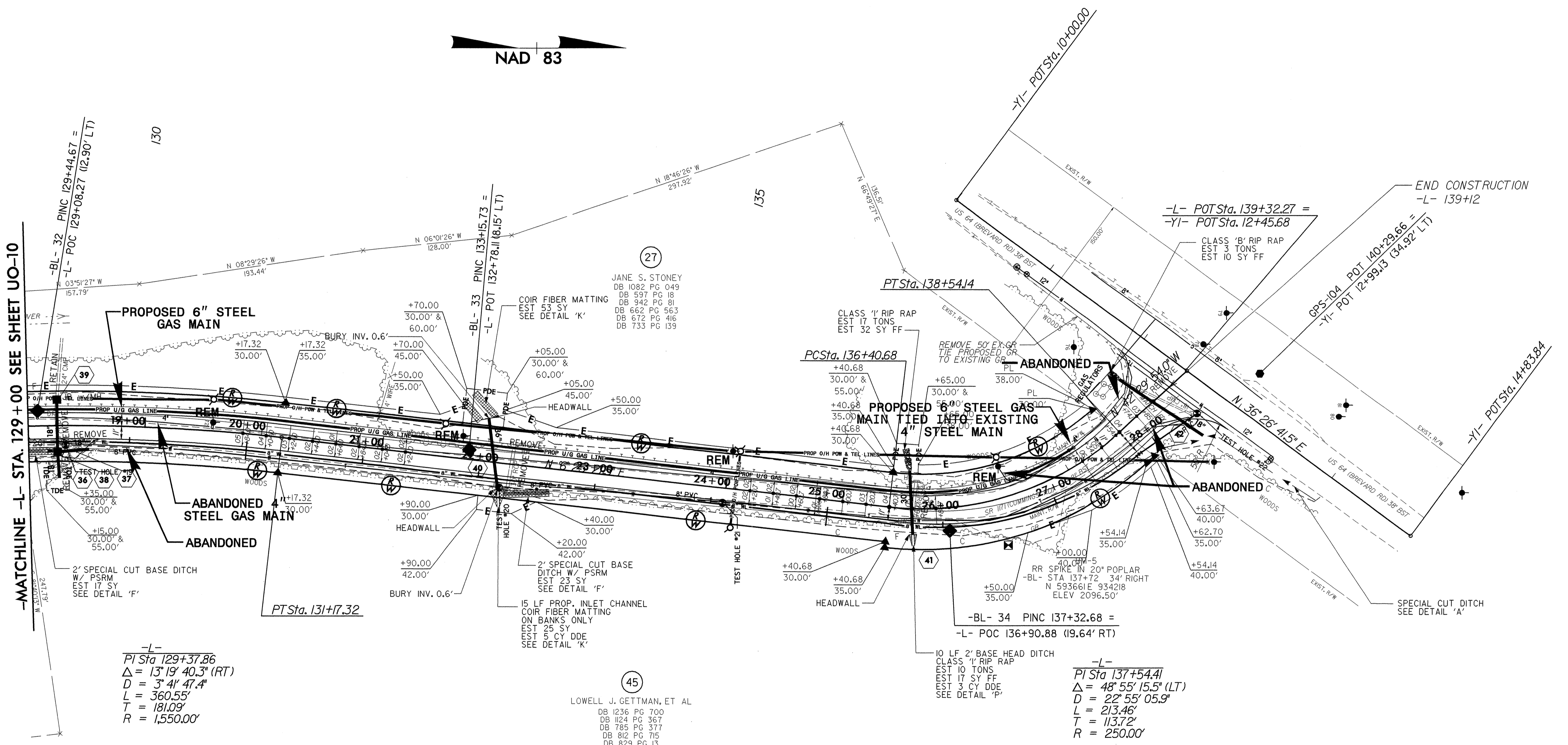
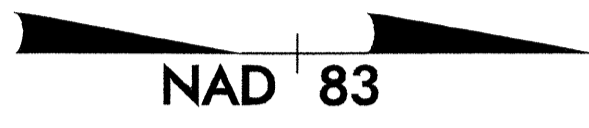
TOE PROTECTION W/ PSRM
EST 18 SY
SEE DETAIL 'J'

TOE PROTECTION W/ PSRM
EST 25 SY
SEE DETAIL 'J'

MATCHLINE -L- STA. 129+00 SEE SHEET UO-11

UTILITIES BY OTHERS

NOTE:
 ALL PROPOSED UTILITY WORK
 SHOWN ON THIS SHEET WILL
 BE DONE BY OTHERS



(45)
 LOWELL J. GETTMAN, ET AL
 DB 1236 PG 700
 DB 1124 PG 367
 DB 785 PG 377
 DB 812 PG 715
 DB 829 PG 13
 DB 850 PG 209
 DB 316 PG 263
 DB 588 PG 449

-L-
 PI Sta 129+37.86
 Δ = 13' 19" 40.3" (RT)
 D = 3' 4" 47.4"
 L = 360.55'
 T = 181.09'
 R = 1,550.00'

-L-
 PI Sta 137+54.41
 Δ = 48' 55" 15.5" (LT)
 D = 22' 55" 05.9"
 L = 213.46'
 T = 113.72'
 R = 250.00'