

**TIP PROJECT: B-4037**

STATE OF NORTH CAROLINA  
DIVISION OF HIGHWAYS

---

PLAN FOR PROPOSED  
HIGHWAY EROSION CONTROL

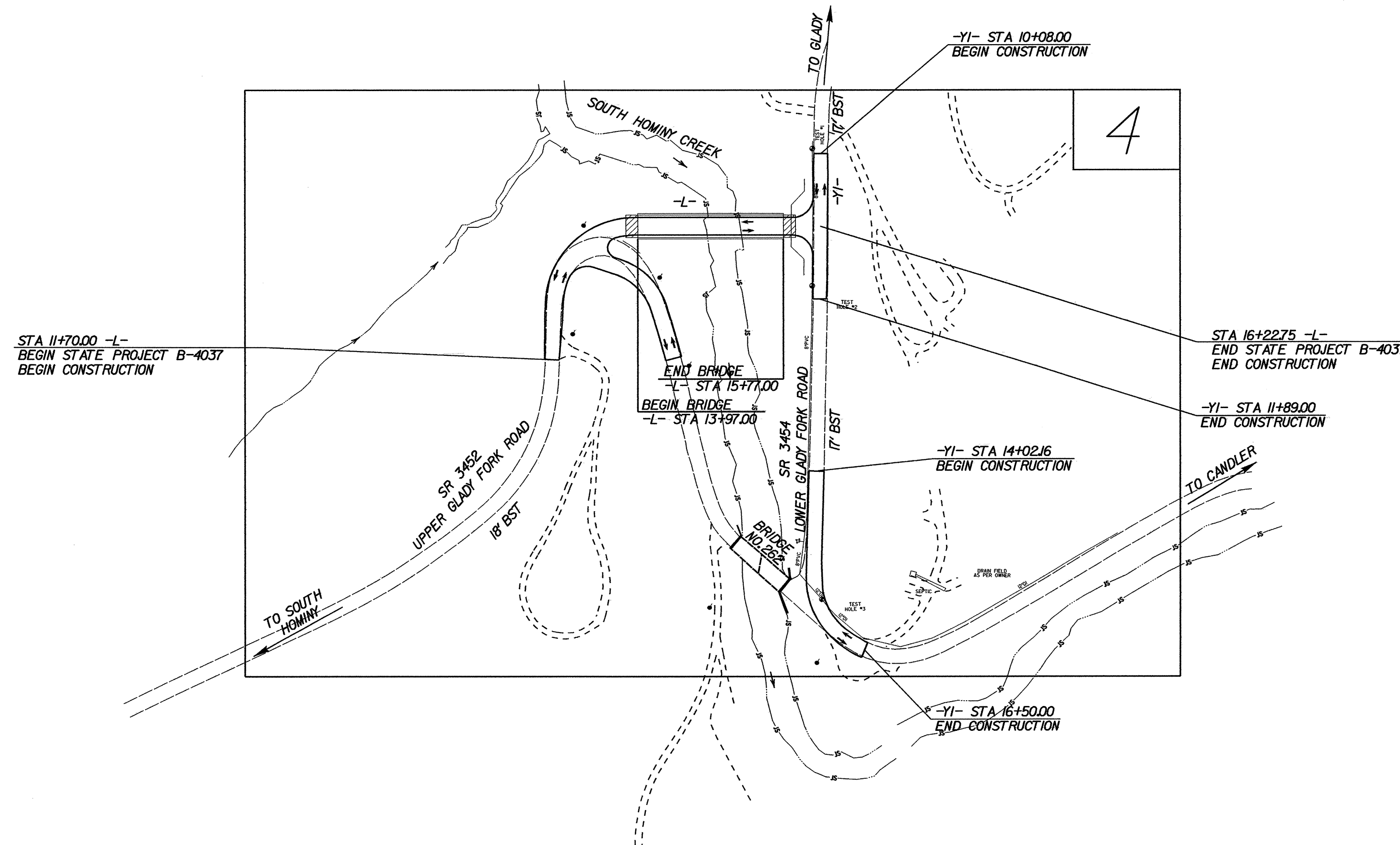
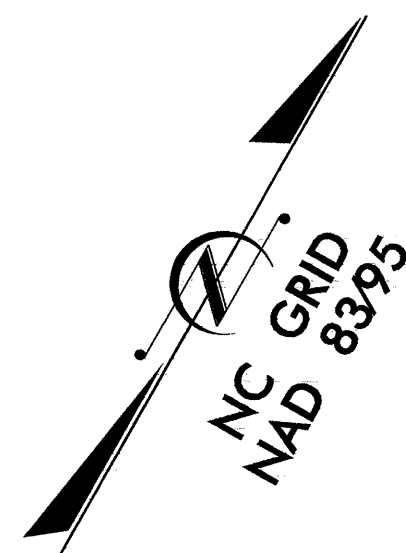
---

**BUNCOMBE COUNTY**

---

**LOCATION: BRIDGE NO. 262 ON SR 3452 OVER SOUTH HOMINY CREEK**

**TYPE OF WORK: GRADING, PAVING, DRAINAGE, AND STRUCTURE**



STATE	STATE PROJECT REFERENCE NO.	SHEET NO.	TOTAL SHEETS
N.C.	B-4037	EC-1	
STATE PROJ. NO.	F.A. PROJ. NO.	DESCRIPTION	

**EROSION AND SEDIMENT CONTROL MEASURES**

Std. #	Description	Symbol
1630.03	Temporary Silt Ditch	TSO
1650.05	Temporary Diversion	TD
1605.01	Temporary Silt Fence	III III III
1606.01	Special Sediment Control Fence	△△△△△△△△
1622.01	Temporary Berms and Slope Drains	TBD
1630.01	Riser Basin	⊙
1635.01	Silt Basin Type B	▨
1635.01	Temporary Rock Silt Check Type-A	⊗
1635.01	Temporary Rock Silt Check Type-B	▶
1635.01	Wattle	⌒
1634.01	Temporary Rock Sediment Dam Type-A	⊞
1634.02	Temporary Rock Sediment Dam Type-B	⊞
1635.01	Rock Pipe Inlet Sediment Trap Type-A	⊞
1635.02	Rock Pipe Inlet Sediment Trap Type-B	⊞
1630.04	Stilling Basin	▭
1632.01	Rock Inlet Sediment Trap Type A	A
1632.02	Type B	B
1632.03	Type C	C
1630.04	Skimmer Basin	▭
1630.04	Tiered Skimmer Basin	▭
1630.04	Infiltration Basin	▭

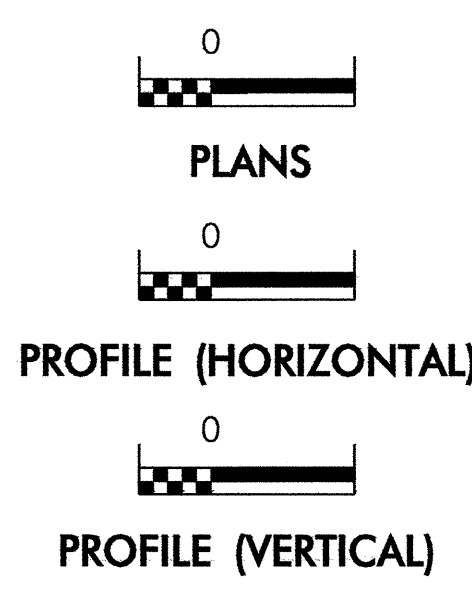
**THIS PROJECT CONTAINS  
EROSION CONTROL PLANS  
FOR CLEARING AND  
GRUBBING PHASE OF  
CONSTRUCTION.**

**THIS PROJECT HAS  
BEEN DESIGNED TO  
SENSITIVE WATERSHED  
STANDARDS.**

**ENVIRONMENTALLY  
SENSITIVE AREA(S) EXIST  
ON THIS PROJECT**

*Refer To E. C. Special Provisions  
for Special Considerations.*

**GRAPHIC SCALE**



ROADSIDE ENVIRONMENTAL UNIT  
DIVISION OF HIGHWAYS  
STATE OF NORTH CAROLINA

Prepared In the Office of:  
**ROADSIDE ENVIRONMENTAL UNIT**  
1 South Wilmington St.  
Raleigh, NC 27611  
**2006 STANDARD SPECIFICATIONS**

Roadway Standard Drawings

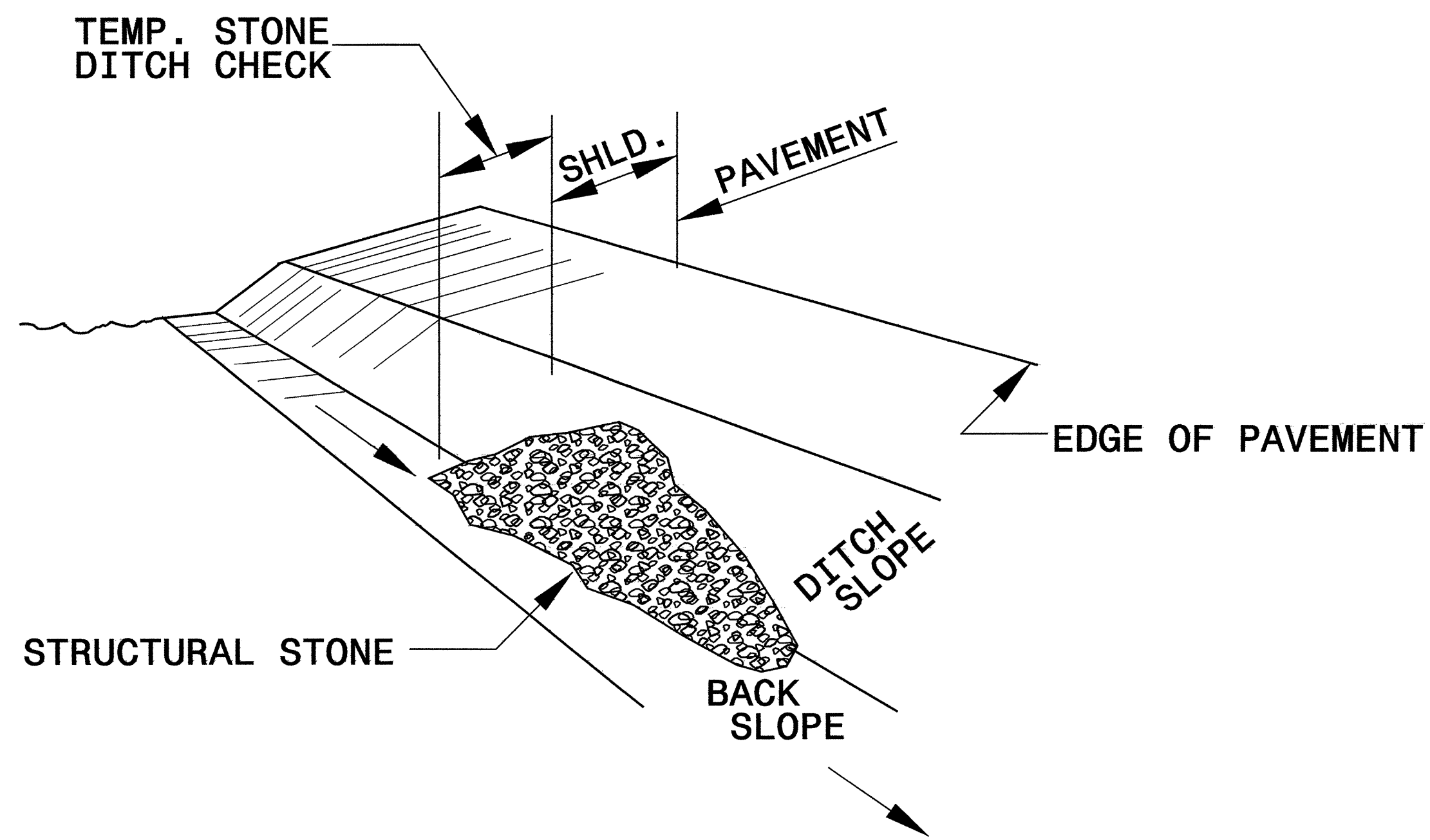
The following roadway english standards as appear in "Roadway Standard Drawings"- Roadway Design Unit - N. C. Department of Transportation - Raleigh, N. C., dated July 18, 2006 and the latest revision thereto are applicable to this project and by reference hereby are considered a part of these plans.

1605.01 Temporary Silt Fence	1632.03 Rock Inlet Sediment Trap Type C
1607.01 Gravel Construction Entrance	1633.01 Temporary Rock Silt Check Type A
1622.01 Temporary Berms and Slope Drains	1634.02 Temporary Rock Sediment Dam Type B
	1635.02 Rock Pipe Inlet Sediment Trap Type B

Project: D:\4037\2006\1122\_roadside\environmental\details\B-4037.ec.dwg, tsh.dgn  
Date: 11/22/06  
Author: RENN  
Checked: RENN

PROJECT REFERENCE NO. B-4037	SHEET NO. EC-2
RW SHEET NO.	
ROADWAY DESIGN ENGINEER	HYDRAULICS ENGINEER

# TEMPORARY ROCK SILT CHECK TYPE 'B' DETAIL

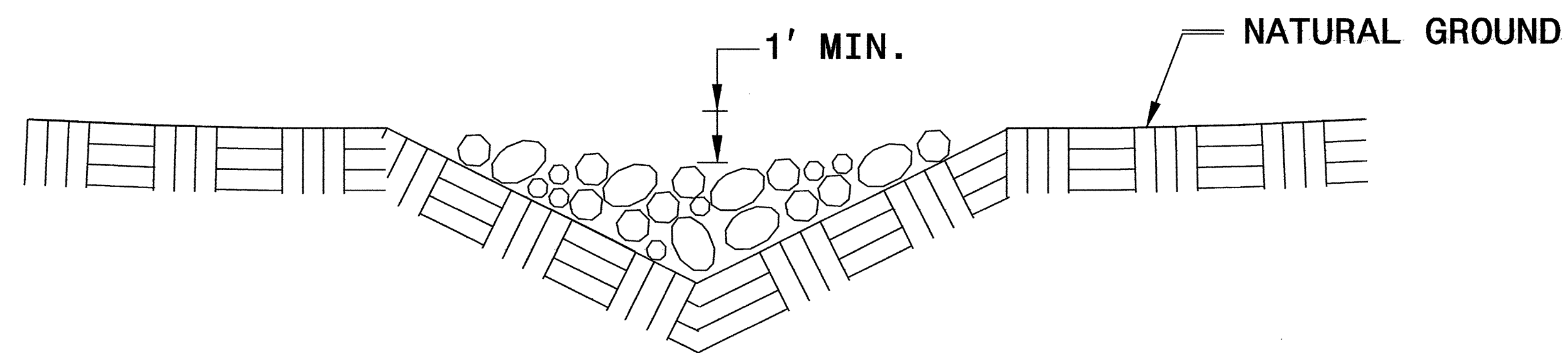


**ISOMETRIC VIEW**

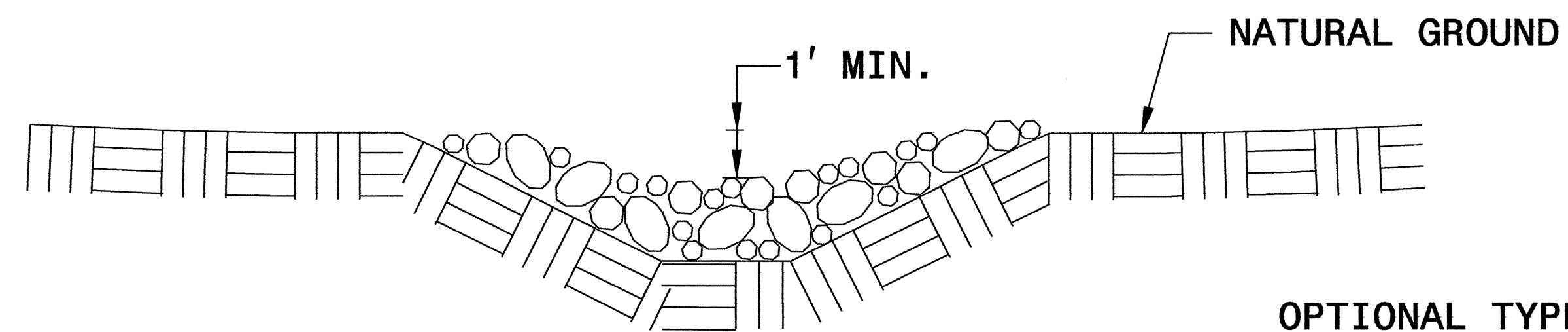
**NOTES:**

USE CLASS 'B' EROSION CONTROL STONE FOR STRUCTURAL STONE.

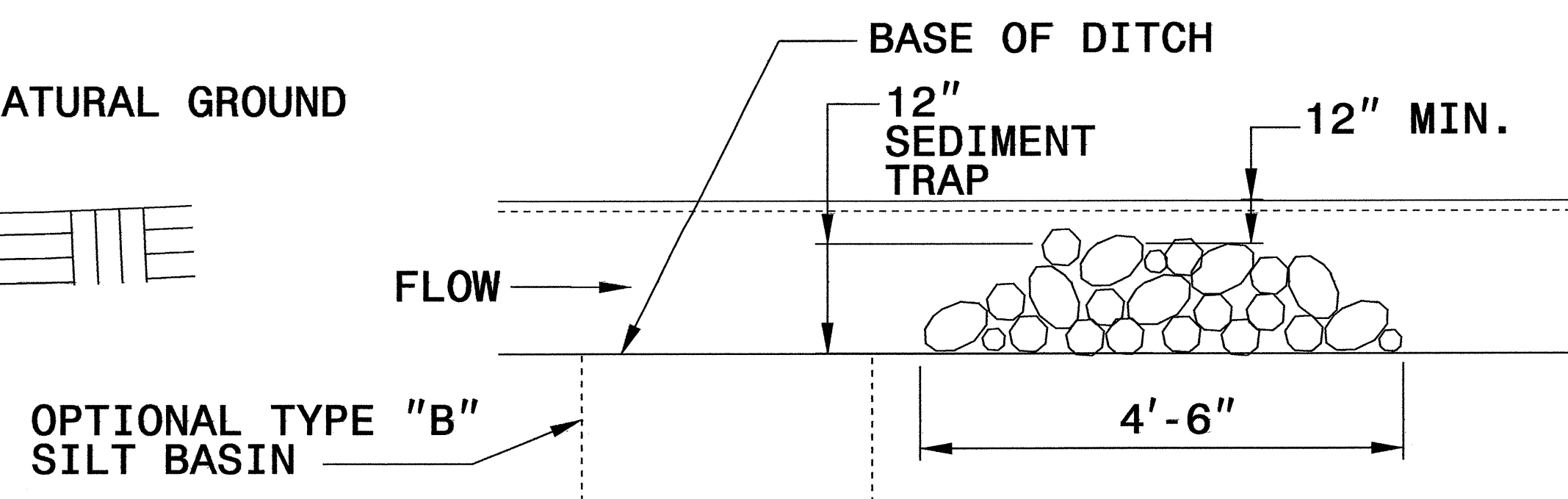
THE ENGINEER MAY DIRECT THE OPTION OF CLASS "A" STONE FOR SITES HAVING LESS THAN ONE (1) ACRE DRAINAGE AREA AND A DITCH GRADE LESS THAN 3%.



**CROSS SECTION VEE DITCH**



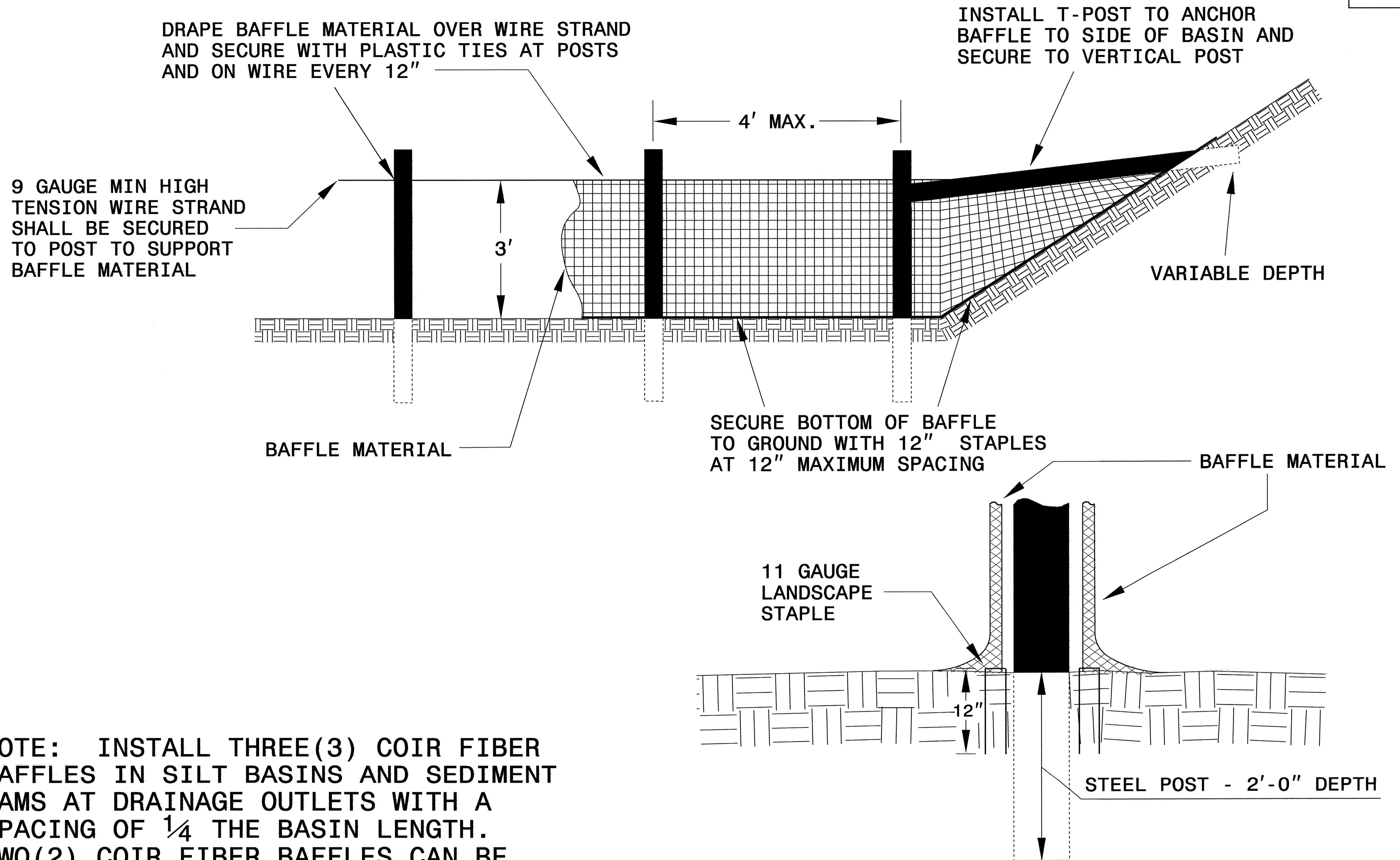
**CROSS SECTION TRAPEZOIDAL DITCH**



**ELEVATION VIEW**

PROJECT REFERENCE NO. B-4037	SHEET NO. EC-2A
RW SHEET NO.	
ROADWAY DESIGN ENGINEER	HYDRAULICS ENGINEER

# COIR FIBER BAFFLE DETAIL

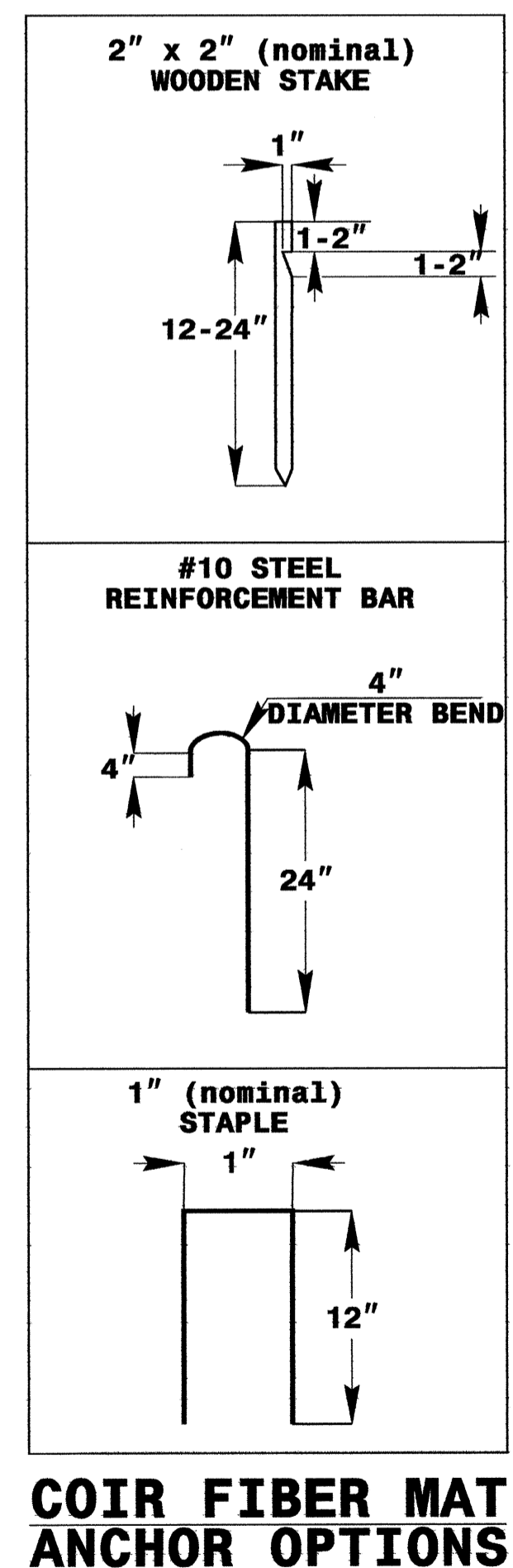
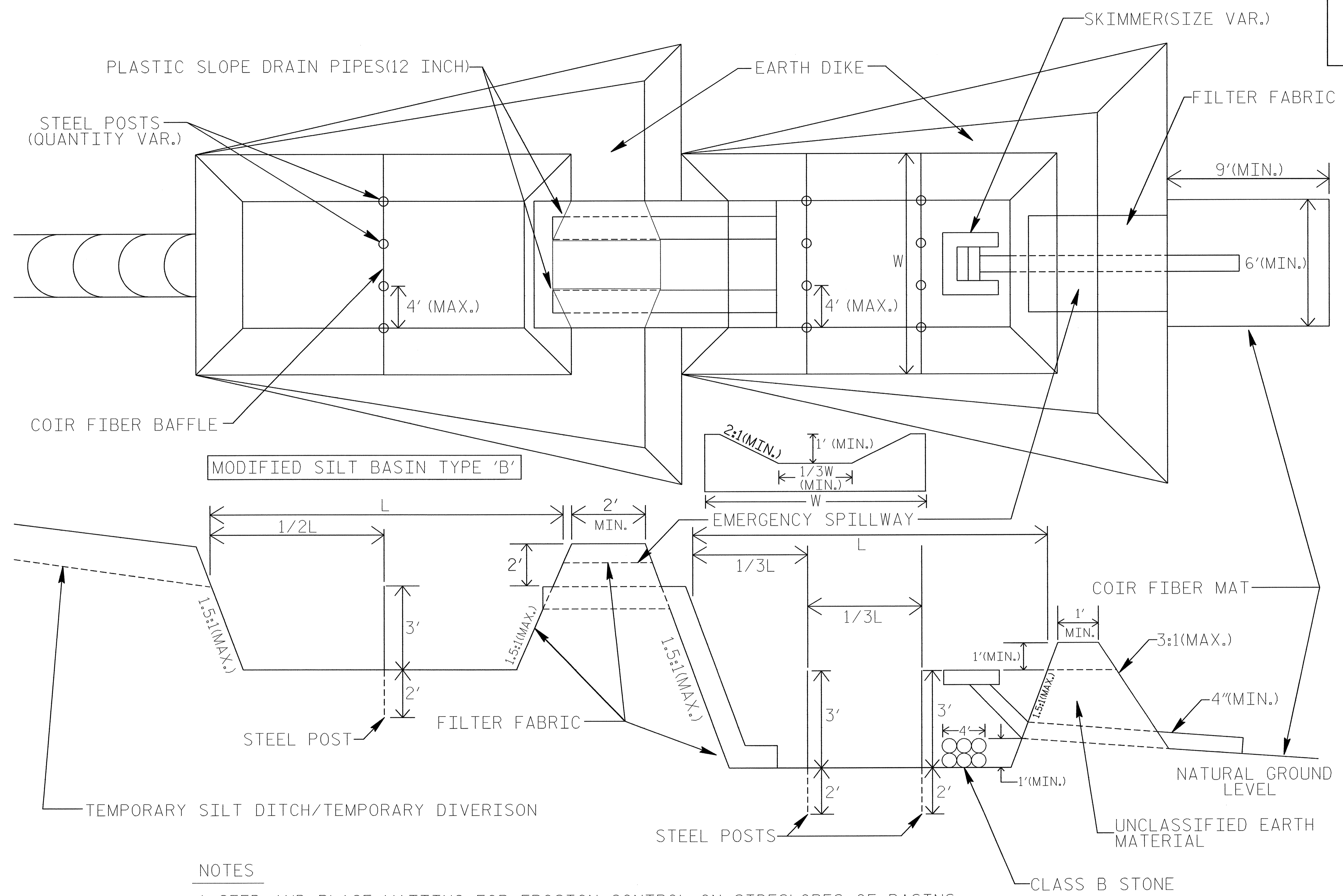


NOTE: INSTALL THREE(3) COIR FIBER BAFFLES IN SILT BASINS AND SEDIMENT DAMS AT DRAINAGE OUTLETS WITH A SPACING OF  $\frac{1}{4}$  THE BASIN LENGTH. TWO(2) COIR FIBER BAFFLES CAN BE INSTALLED IN SILT BASINS AND DAMS LESS THAN 20 FT. IN LENGTH WITH A SPACING OF  $\frac{1}{3}$  THE BASIN LENGTH.

BAFFLE MATERIAL SHALL BE SECURED TO THE BOTTOM AND SIDES OF BASIN USING 12" LANDSCAPE STAPLES

# TIERED SKIMMER BASIN DETAIL

PROJECT REFERENCE NO. B-4037	SHEET NO. EC-2B
RW SHEET NO.	
ROADWAY DESIGN ENGINEER	HYDRAULICS ENGINEER

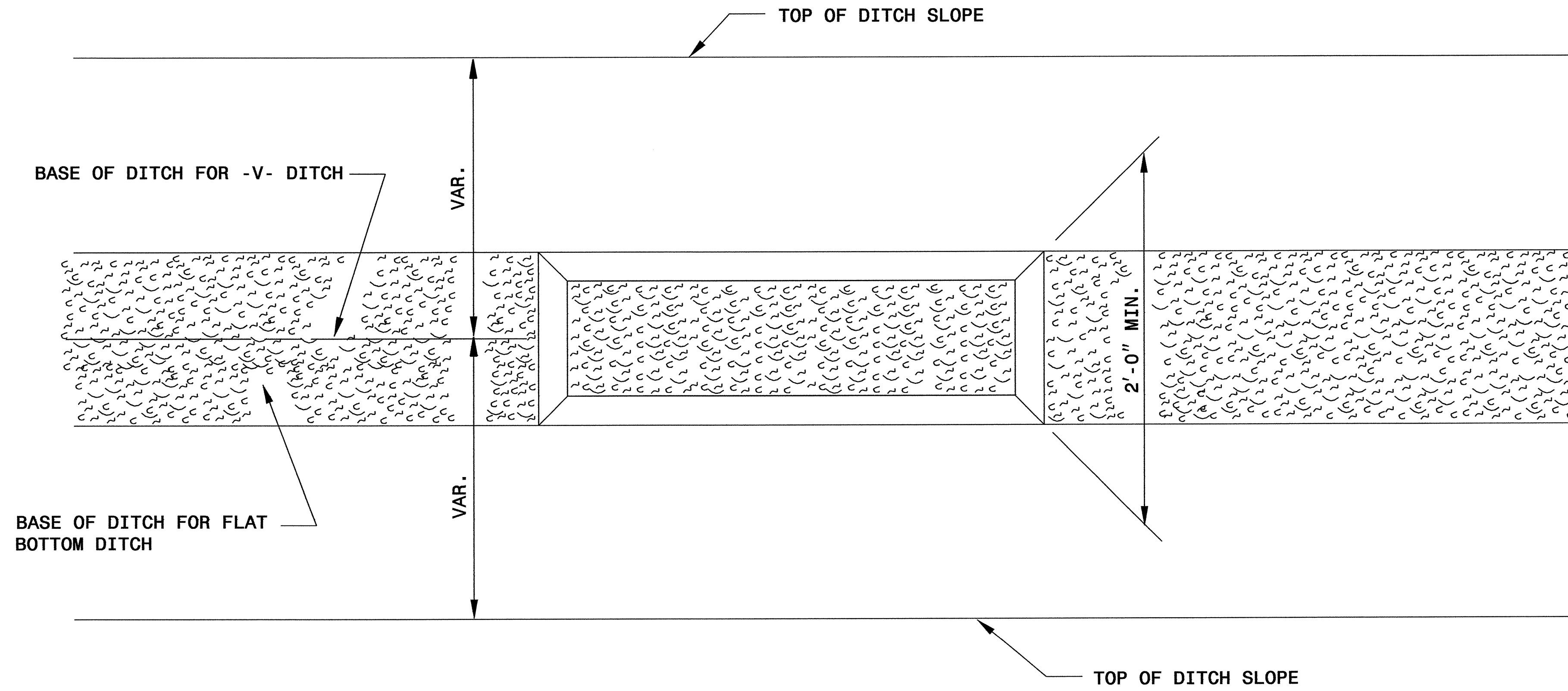


**NOTES**

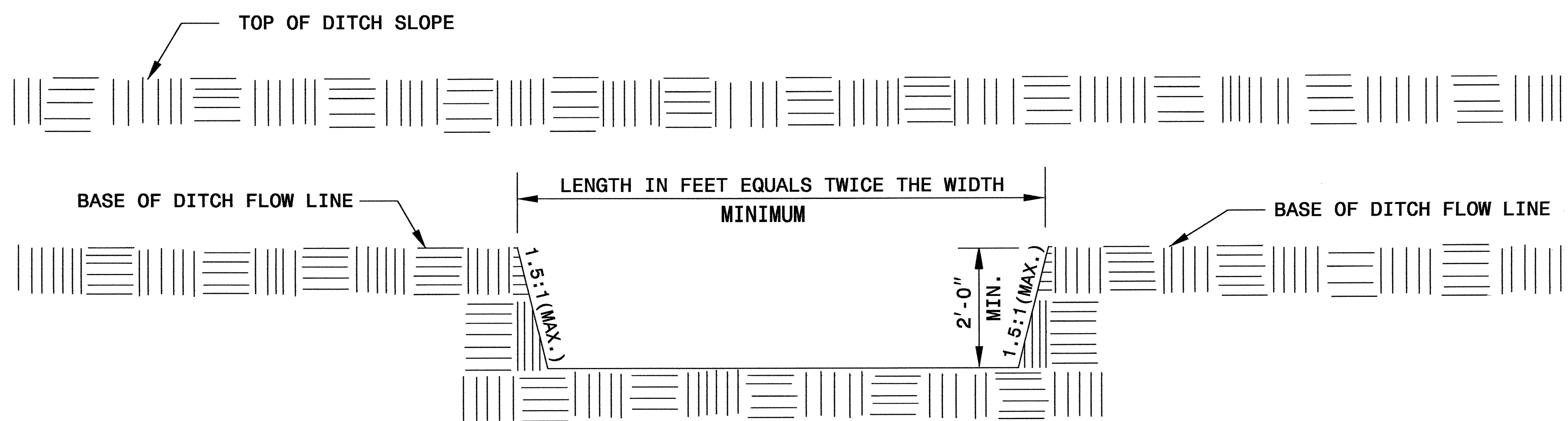
1. SEED AND PLACE MATTING FOR EROSION CONTROL ON SIDESLOPES OF BASINS.
2. LIMIT HEIGHT OF EARTH DIKES TO 5 FT.
3. ADDITIONAL MODIFIED SILT BASINS TYPE 'B' MAY BE NEEDED DEPENDING ON SLOPE.

PROJECT REFERENCE NO.	SHEET NO.
B-4037	EC-2C
RW SHEET NO.	
ROADWAY DESIGN ENGINEER	HYDRAULICS ENGINEER

# SILT BASIN 'B' DETAIL



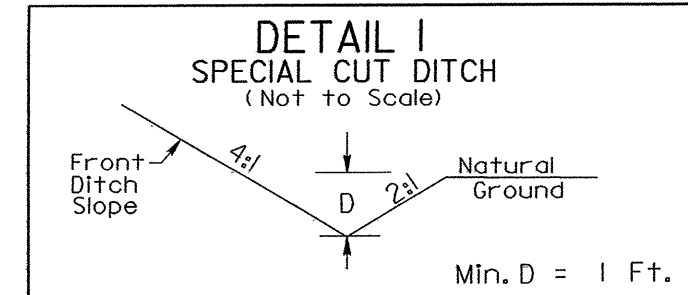
PLAN



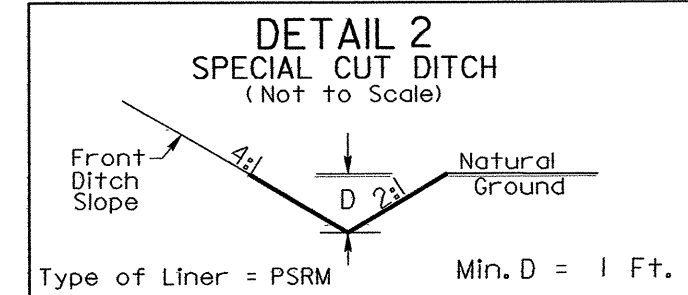
ELEVATION



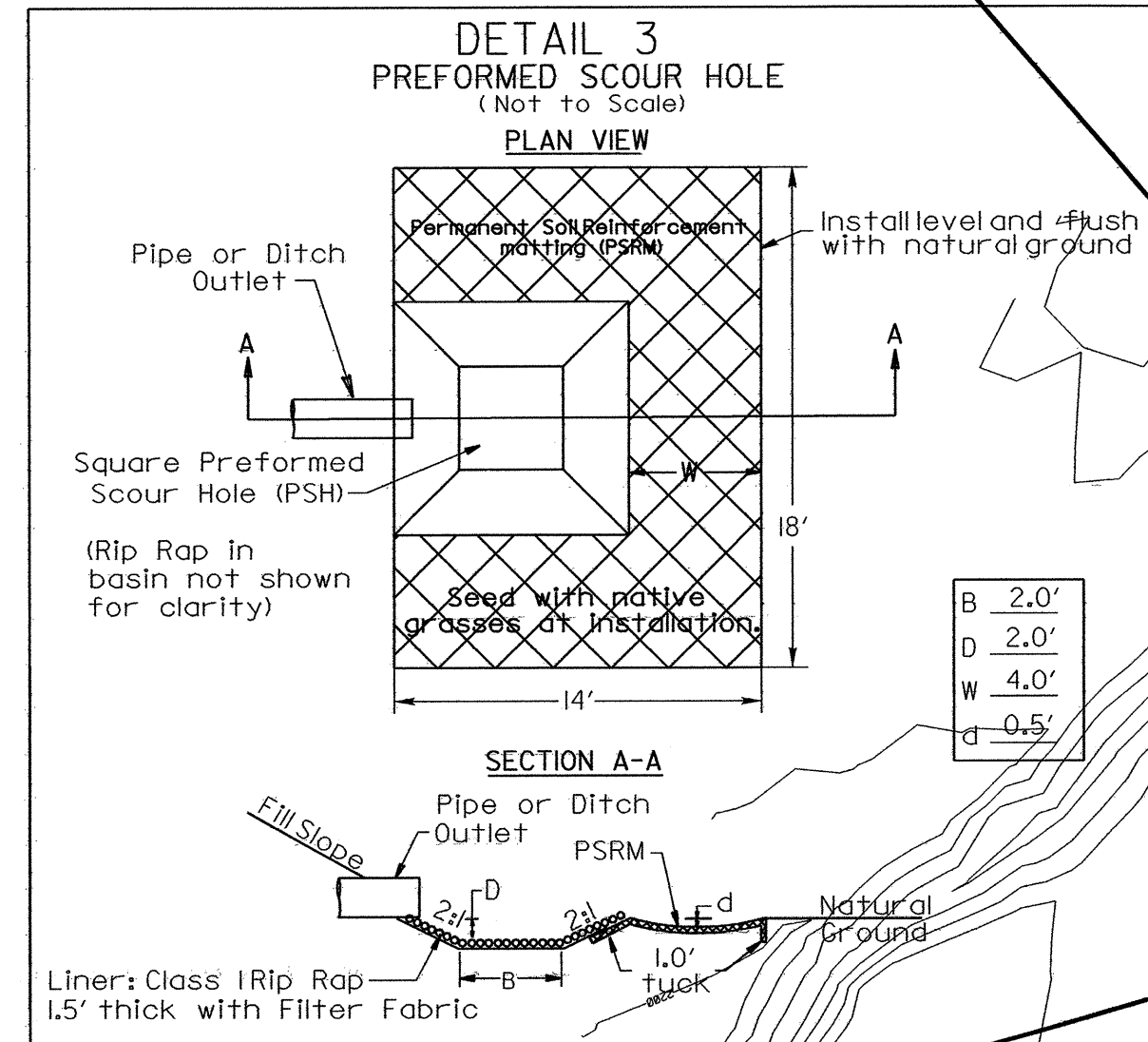
PROJECT REFERENCE NO.	SHEET NO.
B-4037	EC-4/CONST.4
ROADWAY DESIGN ENGINEER	HYDRAULICS ENGINEER



-L- STA 12+00 TO 13+00 (RT)  
 -YI- STA 15+00 TO 15+58 (LT)  
 -YI- STA 15+58 TO 16+50 (LT)



-L- STA 13+00 TO 13+50 (RT)  
 -YI- STA 14+68 TO 15+00 (LT)



-YI- STA 15+69 (RT)

19 x 8 x 3  
 4 ft. weir  
 ID 4.2B

30 x 13 x 3  
 4 ft. weir  
 ID 4.1B

19 x 8 x 3  
 4 ft. weir  
 ID 4.3B

15 x 7 x 3  
 4 ft. weir  
 ID 4.5B

17 x 8 x 3  
 4 ft. weir  
 ID 4.4B

16 x 8 x 3  
 4 ft. weir  
 ID 4.6B

16 x 8 x 3  
 1.5 inch Skimmer  
 with 0.75 inch  
 Orifice Diameter  
 6 ft. weir  
 (See Tiered Skimmer  
 Basin Detail)  
 ID 4.7B

Modified Silt Basin  
 Type 'B'  
 16 x 8 x 3  
 (See Tiered Skimmer  
 Basin Detail)  
 ID 4.7B

34 x 17 x 3  
 ID 4.8B

33 x 16 x 3  
 ID 4.9B

NOTE:  
 UTILIZE TEMPORARY ROCK SEDIMENT DAM TYPE - B  
 AND TIERED SKIMMER BASIN  
 AS STILLING BASIN WHERE APPLICABLE.

CLEARING AND GRUBBING  
 EROSION CONTROL FOR  
 CONSTRUCTION SHEET 4

NOTE:  
 PLACE TEMPORARY ROCK SEDIMENT DAMS TYPE - B  
 AND TEMPORARY ROCK SILT CHECKS TYPE - A AT  
 DRAINAGE OUTLETS.

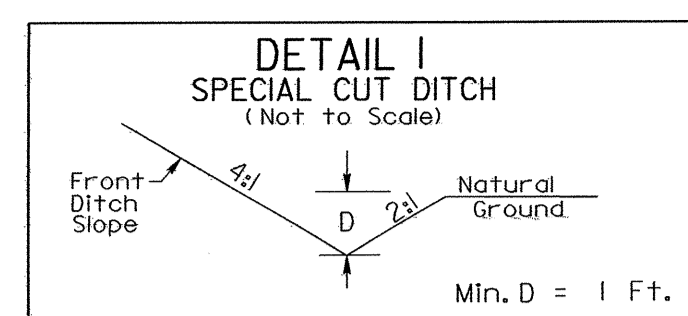
ENVIRONMENTALLY SENSITIVE AREA  
 SEE PROJECT SPECIAL PROVISIONS

REMOVE AND OBLITERATE  
 EXISTING ASPHALT PAVEMENT  
 \*HORIZONTAL CURVE DESIGN EXCEPTION  
 SEE SHEET NO.5 FOR -L- PROFILE  
 SEE SHEET NO.5 FOR -YI- PROFILE

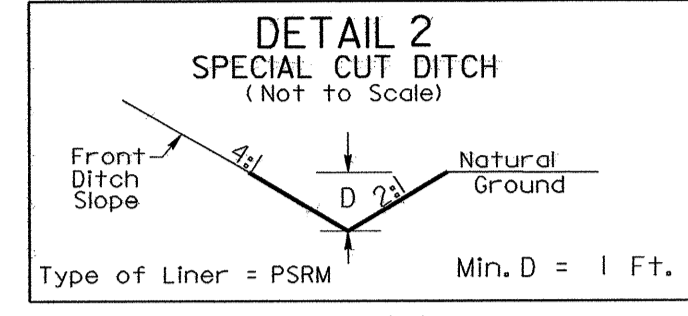
\$DATE\$

\$FILEL\$

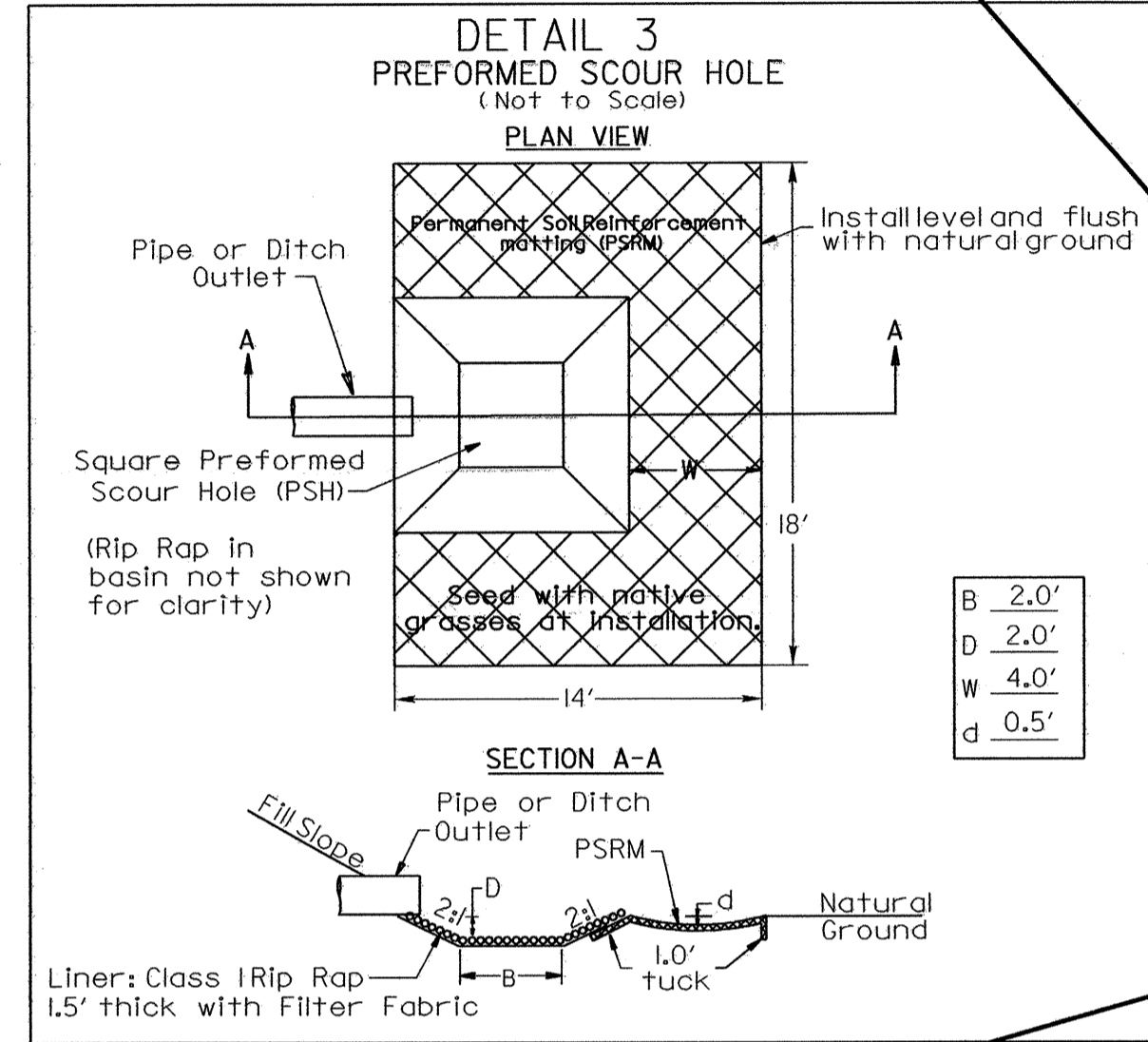
PROJECT REFERENCE NO.	SHEET NO.
B-4037	EC-5/CONST.4
ROADWAY DESIGN ENGINEER	HYDRAULICS ENGINEER



-L- STA 12+00 TO 13+00 (RT)  
 -YI- STA 15+00 TO 15+58 (LT)  
 -YI- STA 15+58 TO 16+50 (LT)



-L- STA 13+00 TO 13+50 (RT)  
 -YI- STA 14+68 TO 15+00 (LT)



-YI- STA 15+69 (RT)

19 x 8 x 3  
 4 ft. weir  
 ID 4.2B

19 x 8 x 3  
 4 ft. weir  
 ID 4.3B

15 x 7 x 3  
 4 ft. weir  
 ID 4.5B

17 x 8 x 3  
 4 ft. weir  
 ID 4.4B

16 x 8 x 3  
 4 ft. weir  
 ID 4.6B

16 x 8 x 3  
 1.5 inch Skimmer  
 with 0.75 inch  
 Orifice Diameter  
 6 ft. weir  
 (See Tiered Skimmer  
 Basin Detail)  
 ID 4.7B

Modified Silt Basin  
 Type 'B'  
 16 x 8 x 3  
 (See Tiered Skimmer  
 Basin Detail)  
 ID 4.7B

34 x 17 x 3  
 ID 4.8B

33 x 16 x 3  
 ID 4.9B

NOTE:  
 UTILIZE TEMPORARY ROCK SEDIMENT DAM TYPE - B  
 AND TIERED SKIMMER BASIN  
 AS STILLING BASIN WHERE APPLICABLE.

REMOVE AND OBLITERATE  
 EXISTING ASPHALT PAVEMENT  
 \*HORIZONTAL CURVE DESIGN EXCEPTION  
 SEE SHEET NO.5 FOR -L- PROFILE  
 SEE SHEET NO.5 FOR -YI- PROFILE

\$DATE\$ \$FILEL\$