

WBS ELEMENTS 2CR. 10521.7, 2CR. 10741.6 AND 2CR. 10541.1

MAP #4

MAP #2

MAP #3

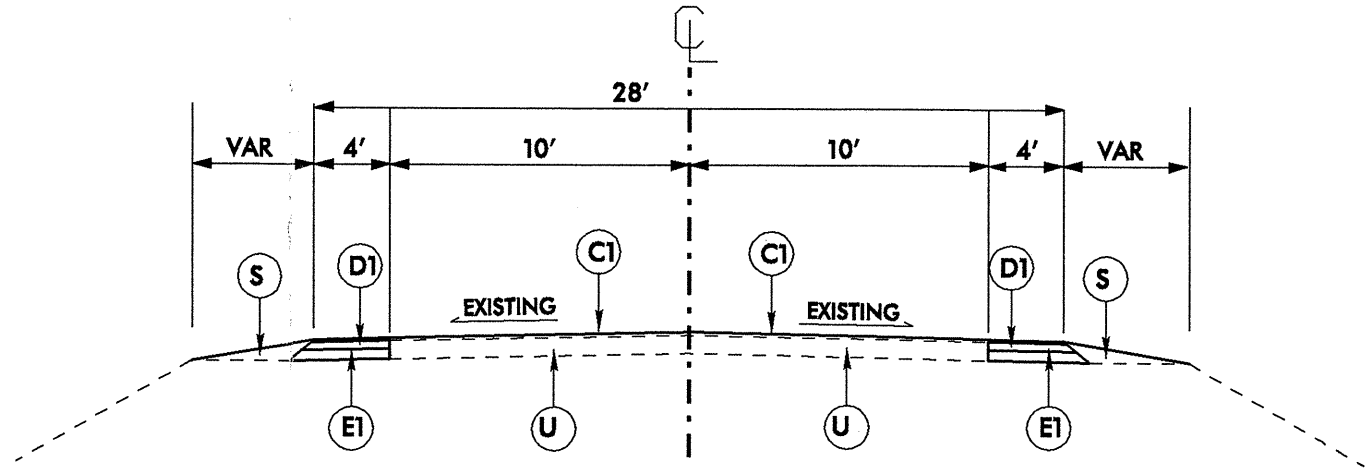
MAP #1

WIDEN AND RESURFACE NC 118 FROM NC 43 IN CRAVEN COUNTY TO NC 11 IN LENOIR COUNTY

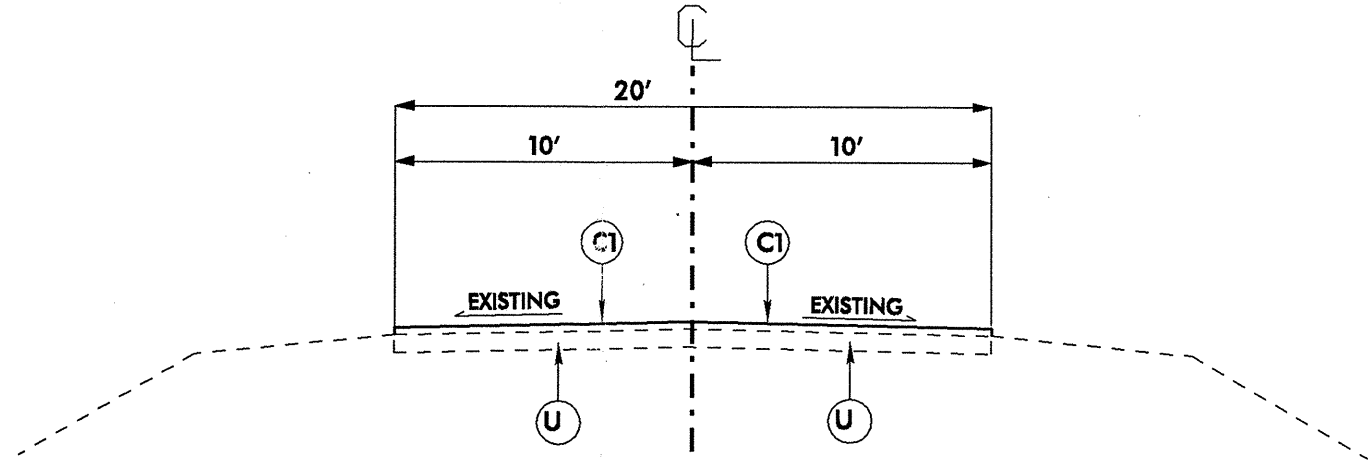
PROJECT REFERENCE NO. 2CRJ05217	SHEET NO. 2
2CRJ07416	2CRJ0541J
ROADWAY DESIGN ENGINEER	PAVEMENT DESIGN ENGINEER

PAVEMENT SCHEDULE

C1	PROP. APPROX. 1½" ASPHALT CONC. SURFACE COURSE, TYPE S9.5B, AT AN AVERAGE RATE OF 168 LBS. PER SQ. YD.
D1	PROP. APPROX. 3" ASPHALT CONC. INTERMEDIATE COURSE, TYPE I19.0B, AT AN AVERAGE RATE OF 342 LB. PER SQ.YD.
E1	PROP. APPROX. 6½" ASPHALT CONC. BASE COURSE, TYPE B25.0B, AT AN AVERAGE RATE OF 827 LB. PER SQ.YD.
S	SHOULDER RECONSTRUCTION
U	EXISTING PAVEMENT



USE TYPICAL SECTION #1
MAP #S 1 AND 2



USE TYPICAL SECTION #2
MAP #S 3 AND 4

PROJECT NO.	SHEET NO.	TOTAL NO.
2CR.10521.7, 2CR.10741.6 2CR.10541.1,	3	

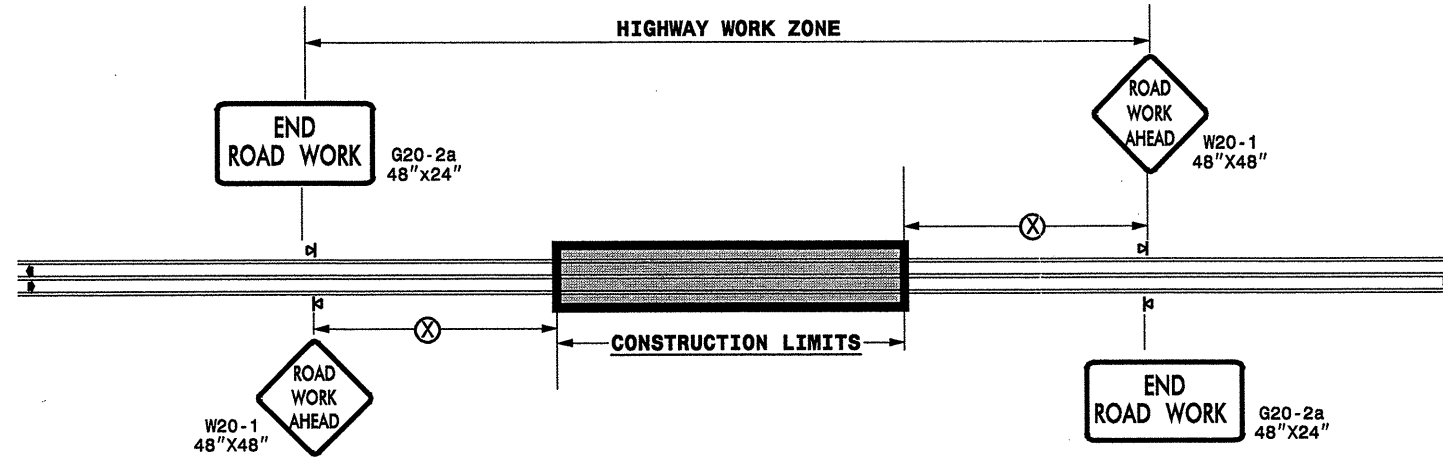
SUMMARY OF QUANTITIES

PROJECT NO	COUNTY	MAP NO	ROUTE	DESCRIPTION	TYP NO	LENGTH MI	WIDTH FT	SHOULDER RECONSTRUCTION SMI	BASE COURSE, B25.0B TONS	INTERMEDIATE COURSE, I19.0B TONS	SURFACE COURSE, S9.5B TONS	PG 64-22 PLANT MIX TONS	ADJ. OF MANHOLES EA	ADJ. OF METER OR VALVE BOX EA	SEED & MULCHING AC
2CR.10521.7	Craven	1	NC 118	FROM NC 43 TO PITT CO	1	11	28	22	18823	10014	16,771	2,286	1	1	27.00
TOTAL FOR PROJ NO. 2CR.10521.7						11		22	18823	10014	16,771	2,286	1	1	27.00
2CR.10741.6	Pitt	2	NC 118	FROM CRAVEN CO TO CHURCH ST	1	6.4	28	12.8	10952	5827	9,757	1,330	1	1	15.00
		3	NC 118	FROM PAVING JOINT ON N HIGHLAND TO LENOIR CO	2	0.3	20				327	20	1	1	
TOTAL FOR PROJ NO. 2CR.10741.6						6.7		12.8	10952	5827	10,084	1,350	2	2	15.00
2CR.10541.1	Lenoir	4	NC 118	FROM BRIDGE AT CO LINE TO NC 11	2	0.6	20				655	39	1	1	
TOTAL FOR PROJ NO. 2CR.10541.1						0.6		0	0	0	655	39	1	1	
GRAND TOTAL						18.3		34.8	29775	15841	27,510	3,675	4	4	42.00

THERMOPLASTIC AND PAINT QUANTITIES

PROJECT NO	COUNTY	MAP NO	ROUTE	DESCRIPTION	4685000000-E	4686000000-E	4697000000-E	4710000000-E	4721000000-E
					4" X 90 M WHITE THERMO LF	4" X 120 M YELLOW THERMO LF	8" X 120 M WHITE THERMO LF	24" X 120 M WHITE THERMO LF	THERMO MSG SCHOOL 120 M EA
2CR.10521.7	Craven	1	NC 118	FROM NC 43 TO PITT CO	118,360	72,600		200	
TOTAL FOR PROJ NO. 2CR.10521.7					118,360	72,600		200	
2CR.10741.6	Pitt	2	NC 118	FROM CRAVEN CO TO CHURCH ST	68,864	42,240	100	300	12
		3	NC 118	FROM PAVING JOINT ON N HIGHLAND TO LENOIR CO	3,228	1,980			
TOTAL FOR PROJ NO. 2CR.10741.6					72,092	44,220	100	300	12
2CR.10541.1	Lenoir	4	NC 118	FROM BRIDGE AT CO LINE TO NC 11	6,456	3,960		200	
TOTAL FOR PROJ NO. 2CR.10541.1					6,456	3,960		200	
GRAND TOTAL					196,908	120,780	100	700	12

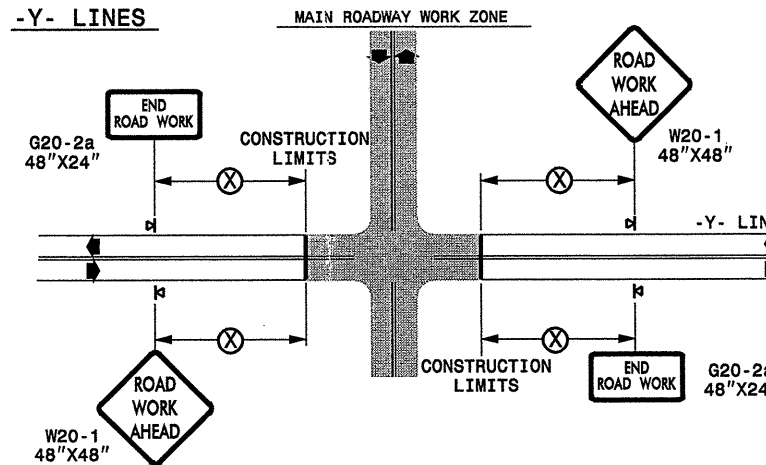
TWO-WAY UNDIVIDED ** (L-LINES)



POSTED SPEED LIMIT (M.P.H.)	RECOMMENDED MINIMUM SIGN SPACING
≤ 50	500'
≥ 55	1000'

STATE OF NORTH CAROLINA
DEPT. OF TRANSPORTATION
DIVISION OF HIGHWAYS
RALEIGH, N.C.

ROADWAYS INTERSECTING ALONG 2 WAY UNDIVIDED WORK ZONE (Y-LINES)



DETAIL DRAWING
FOR TWO-WAY UNDIVIDED
WORK ZONE WARNING SIGNS

GENERAL NOTES

- USE FLUORESCENT ORANGE SHEETING (TYPE VII OR HIGHER) ON ALL ADVANCE WORK ZONE SIGNS.
- DO NOT INSTALL ADVANCE WARNING SIGNS MORE THAN 3 DAYS PRIOR TO BEGINNING OF WORK.
- ALL SIGN SPACING DIMENSIONS ARE APPROXIMATE, FIELD ADJUST AS NECESSARY OR AS DIRECTED.
- USE PORTABLE WORK ZONE SIGNS ONLY WITH PORTABLE WORK ZONE SIGN STANDS SPECIFICALLY DESIGNED FOR ONE ANOTHER. PORTABLE WORK ZONE SIGNS MAY BE ROLL UP OR APPROVED COMPOSITE.
- PROVIDE PORTABLE WORK ZONE SIGN STANDS, PORTABLE SIGNS AND SIGN SHEETING WHICH ARE LISTED ON THE NORTH CAROLINA DEPARTMENT OF TRANSPORTATION'S APPROVED PRODUCT LIST OR ACCEPTED AS TRAFFIC QUALIFIED BY THE TRAFFIC CONTROL UNIT.
- ** TWO-WAY UNDIVIDED ADVANCE WARNING SIGN CONFIGURATION MAY BE USED ON URBAN MULTI-LANE FACILITIES WHERE CONDITIONS LIMIT THE USE OF DUAL MOUNTED SIGNS AS DETERMINED BY THE ENGINEER.

LEGEND	
	PORTABLE SIGN
	DIRECTION OF TRAFFIC FLOW

SHEET 1 OF 1

APPROVED: _____ DATE: _____	DETAIL DRAWING FOR TWO-WAY UNDIVIDED ADVANCED WORK ZONE WARNING SIGNS		REVISIONS	
SEAL			SCALE: NONE	7-98
			10-98	03/04
			01/01	11/04
			CADD FILE	

09-APR-2008 16:58
 \\DOT\DF-SR00101\GROUPS-WZTCCC\design\group\resurfacing\resurfacing2007\div02\c202082.2cr105217etc.crv\openpittinoir.nc18\c202082.2cr105217etc..2wayundivurbtrf-wysjuly2006.dgn
 pseyvmore AT WZTCCC