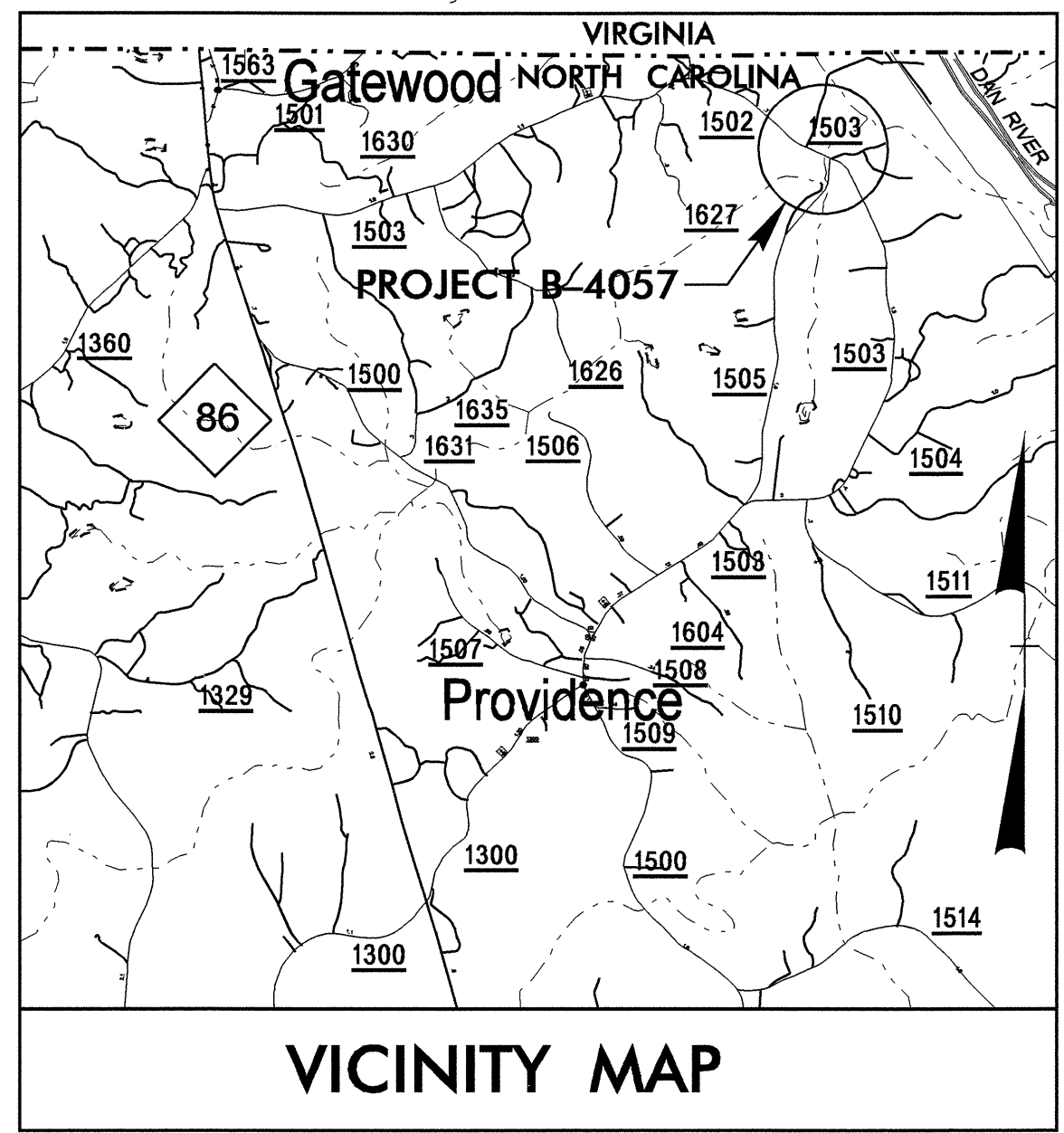


09/08/99

See Sheet 1-A For Index of Sheets  
See Sheet 1-B For Conventional symbols  
See Sheet 1-C For Survey Control Sheet

T.I.P. NO.	SHEET NO.
B-4057	UO-1

**TIP PROJECT: B-4057**

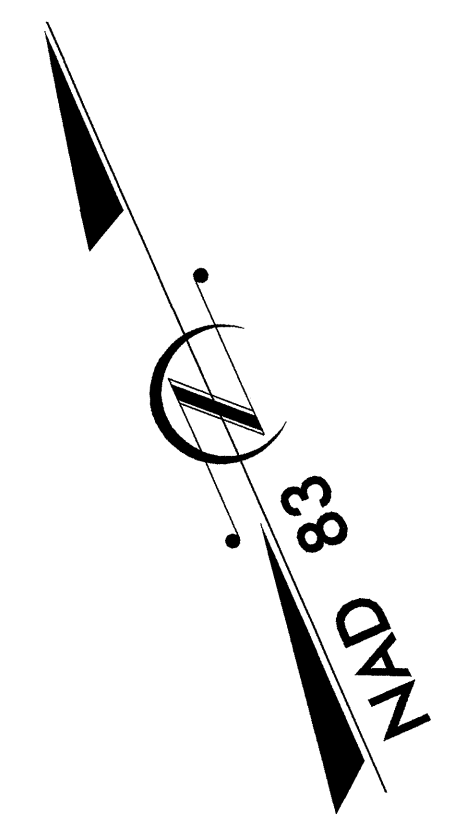


STATE OF NORTH CAROLINA  
DIVISION OF HIGHWAYS

**UTILITY BY OTHERS PLANS  
CASWELL COUNTY**

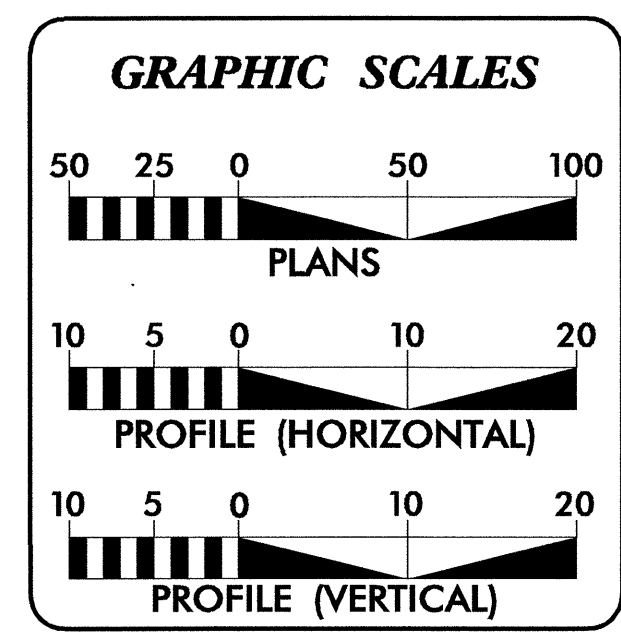
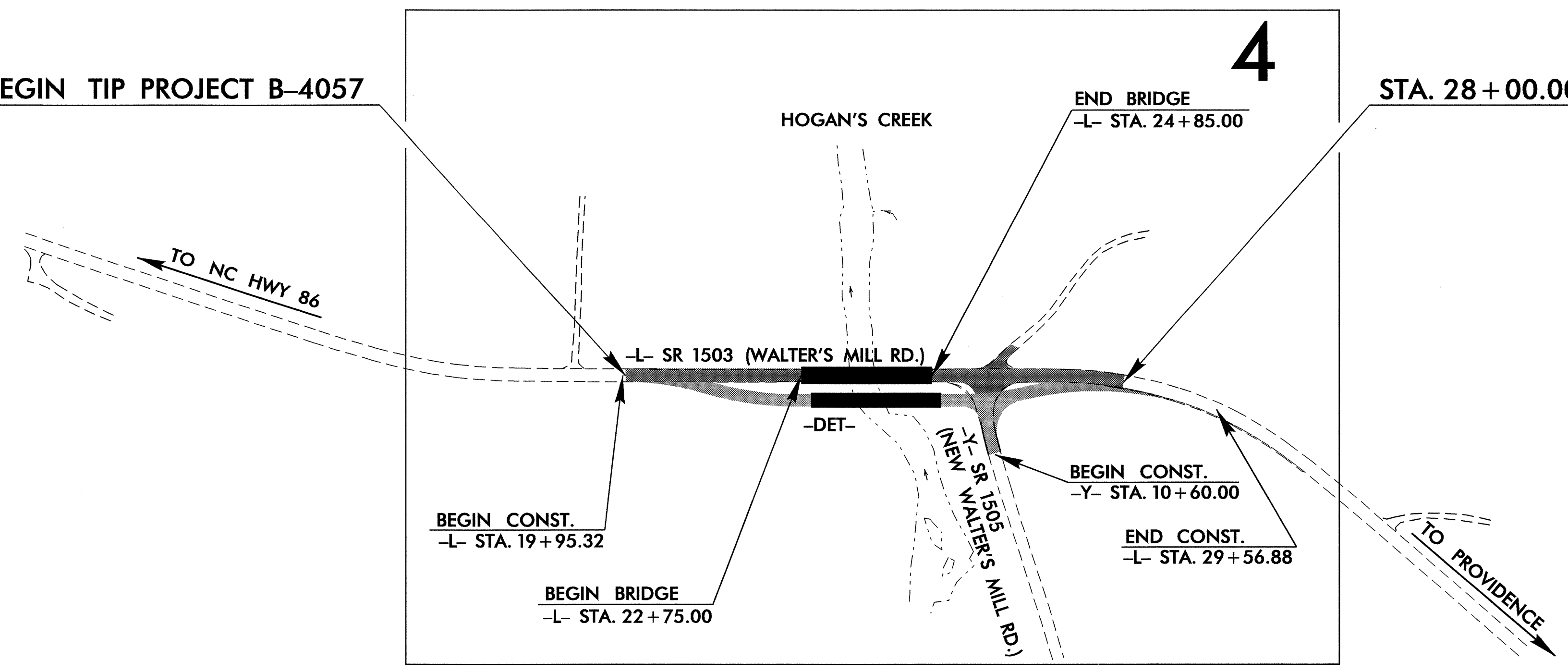
**LOCATION: BRIDGE NO. 39 OVER HOGAN'S CREEK  
ON SR 1503 (WALTER'S MILL ROAD)**

**TYPE OF WORK: RELOCATION OF UTILITIES**



STA. 20+00.00 -L- BEGIN TIP PROJECT B-4057

STA. 28+00.00 -L- END TIP PROJECT B-4057



**INDEX OF SHEETS**

SHEET NO.	DESCRIPTION
UO-1	TITLE SHEET
UO-2	UTILITY BY OTHERS PLAN SHEETS

**UTILITY OWNERS ON PROJECT**

(1) MEBTEL

PREPARED IN THE OFFICE OF:  
**DIVISION OF HIGHWAYS  
DESIGN SERVICES  
UTILITY SECTION**

1591 MAIL SERVICES CENTER  
RALEIGH NC 27699-1591  
PHONE (919) 250-4128  
FAX (919) 250-4119

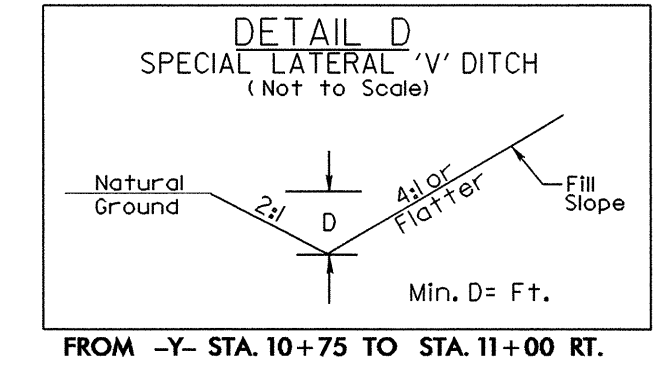
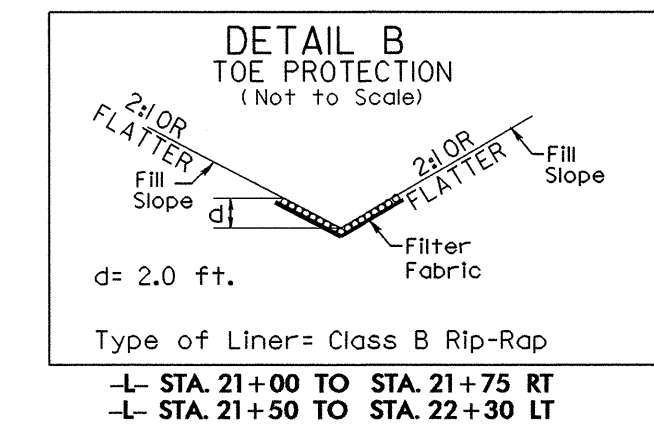
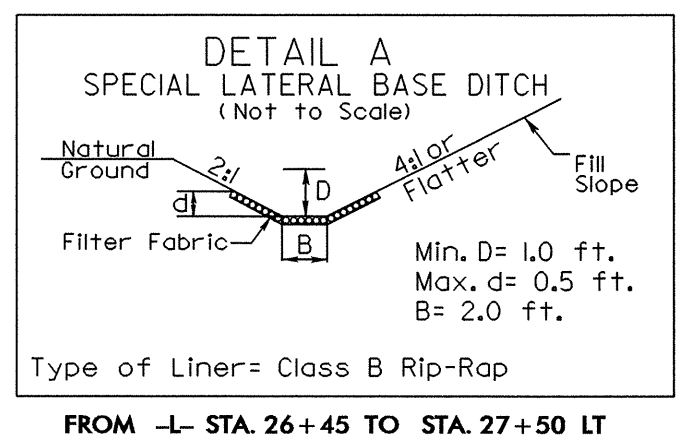
Roger Worthington, P.E. UTILITIES SECTION ENGINEER  
Corey Bousquet, P.E. UTILITIES SQUAD LEADER PROJECT ENGINEER  
Britt McCurry UTILITIES PROJECT DESIGNER

03-MAR-2008 10:41  
P:\UH\it\tes\Nrdy\_UH\Proj\B4057\_UT\_UO\_1.sh.dgn  
\$\$\$\$\$USERNAME\$\$\$\$\$

UTILITIES BY OTHERS

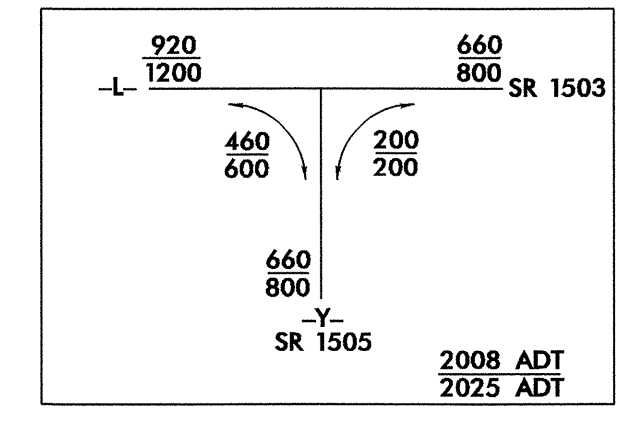
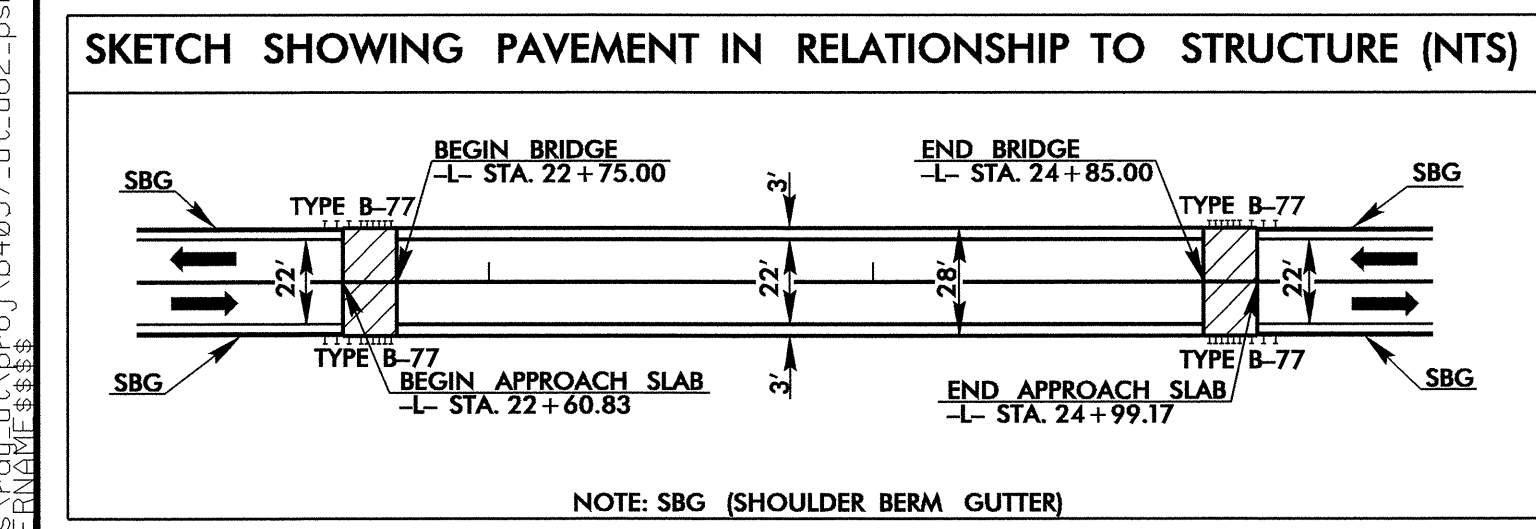
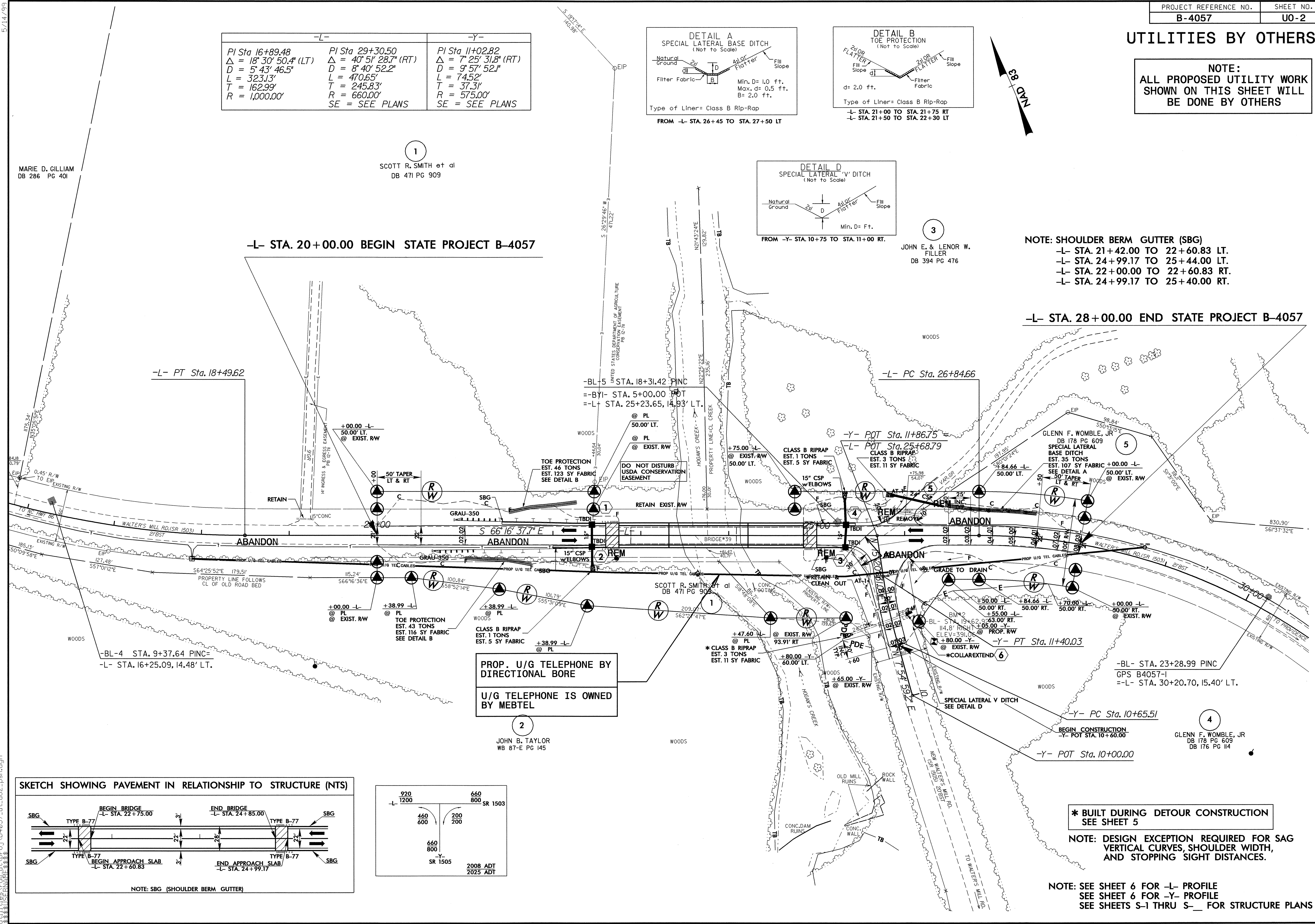
NOTE:  
ALL PROPOSED UTILITY WORK SHOWN ON THIS SHEET WILL BE DONE BY OTHERS

-L-	-Y-	-Y-
PI Sta 16+89.48	PI Sta 29+30.50	PI Sta 11+02.82
$\Delta = 18^{\circ} 30' 50.4" (LT)$	$\Delta = 40^{\circ} 51' 28.7" (RT)$	$\Delta = 7^{\circ} 25' 31.8" (RT)$
$D = 5^{\circ} 43' 46.5"$	$D = 8^{\circ} 40' 52.2"$	$D = 9^{\circ} 57' 52.1"$
$L = 323.13'$	$L = 470.65'$	$L = 74.52'$
$T = 162.99'$	$T = 245.83'$	$T = 37.31'$
$R = 1,000.00'$	$R = 660.00'$	$R = 575.00'$
	SE = SEE PLANS	SE = SEE PLANS



NOTE: SHOULDER BERM GUTTER (SBG)  
-L- STA. 21+42.00 TO 22+60.83 LT.  
-L- STA. 24+99.17 TO 25+44.00 LT.  
-L- STA. 22+00.00 TO 22+60.83 RT.  
-L- STA. 24+99.17 TO 25+40.00 RT.

-L- STA. 28+00.00 END STATE PROJECT B-4057



\* BUILT DURING DETOUR CONSTRUCTION  
SEE SHEET 5

NOTE: DESIGN EXCEPTION REQUIRED FOR SAG VERTICAL CURVES, SHOULDER WIDTH, AND STOPPING SIGHT DISTANCES.

NOTE: SEE SHEET 6 FOR -L- PROFILE  
SEE SHEET 6 FOR -Y- PROFILE  
SEE SHEETS S-1 THRU S-\_\_ FOR STRUCTURE PLANS

5/14/99  
03-MAR-2008 07:34  
r:\utilities\tr\du\proj\4057\_ut.uo2\_psh.dgn