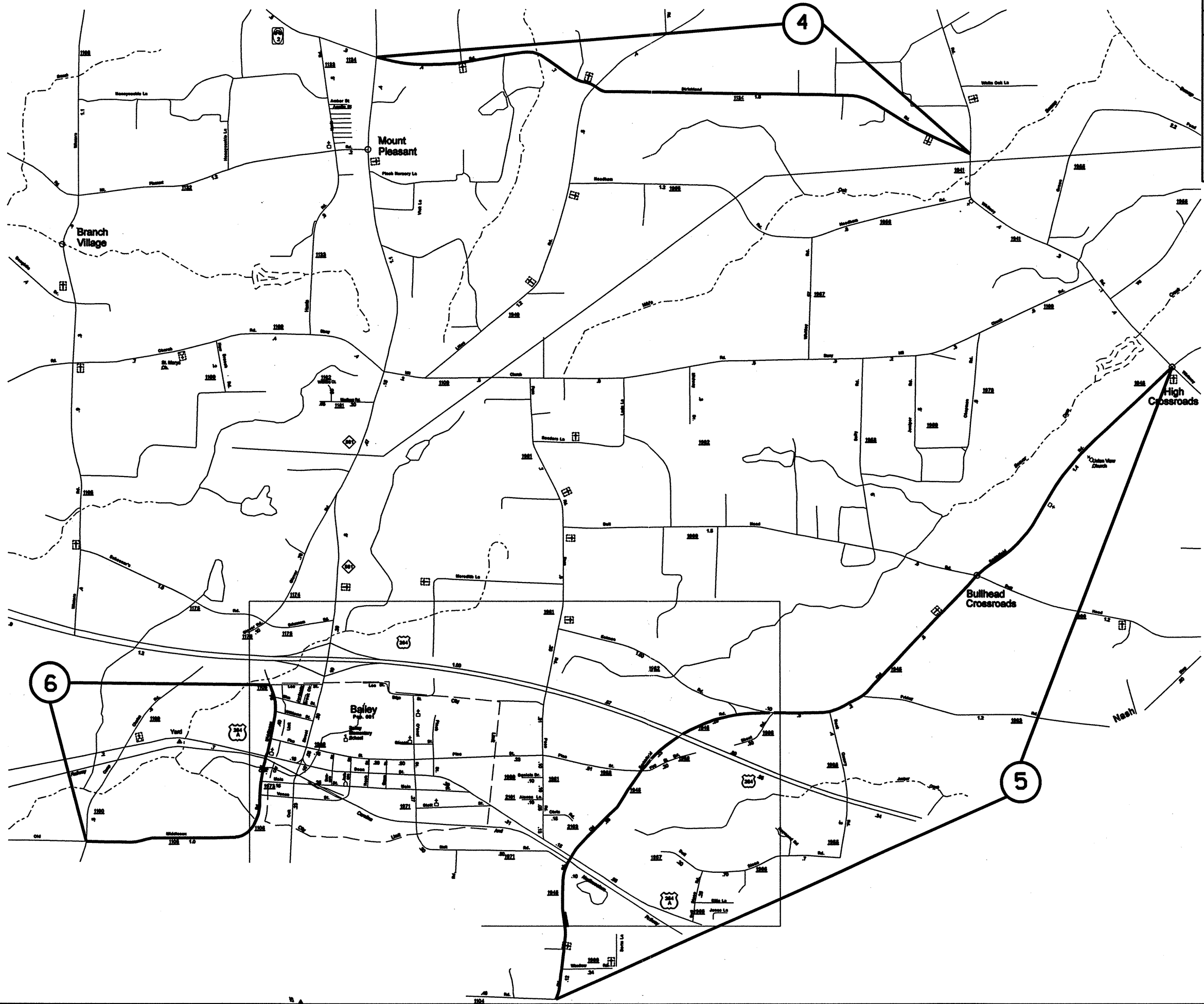
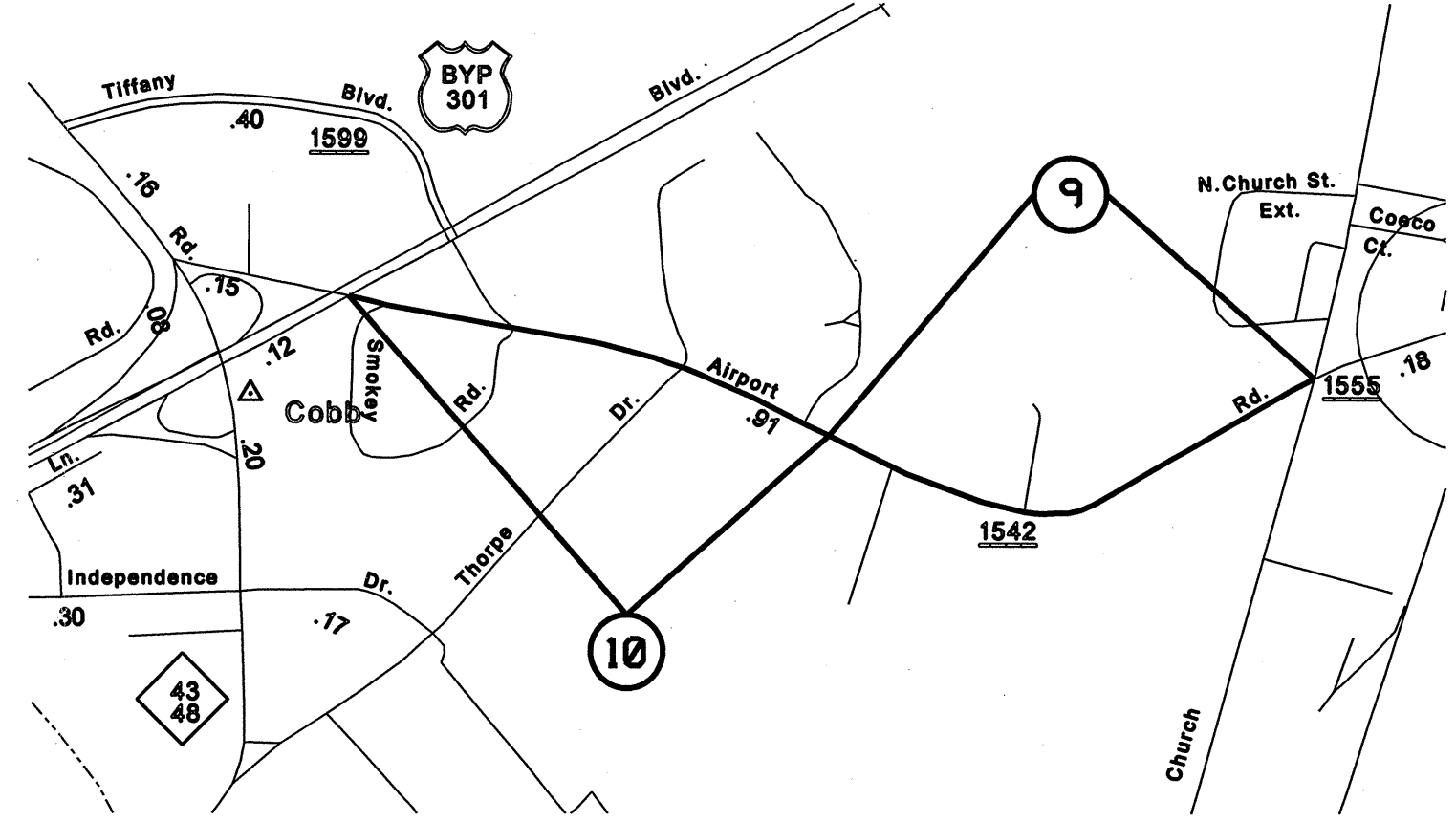
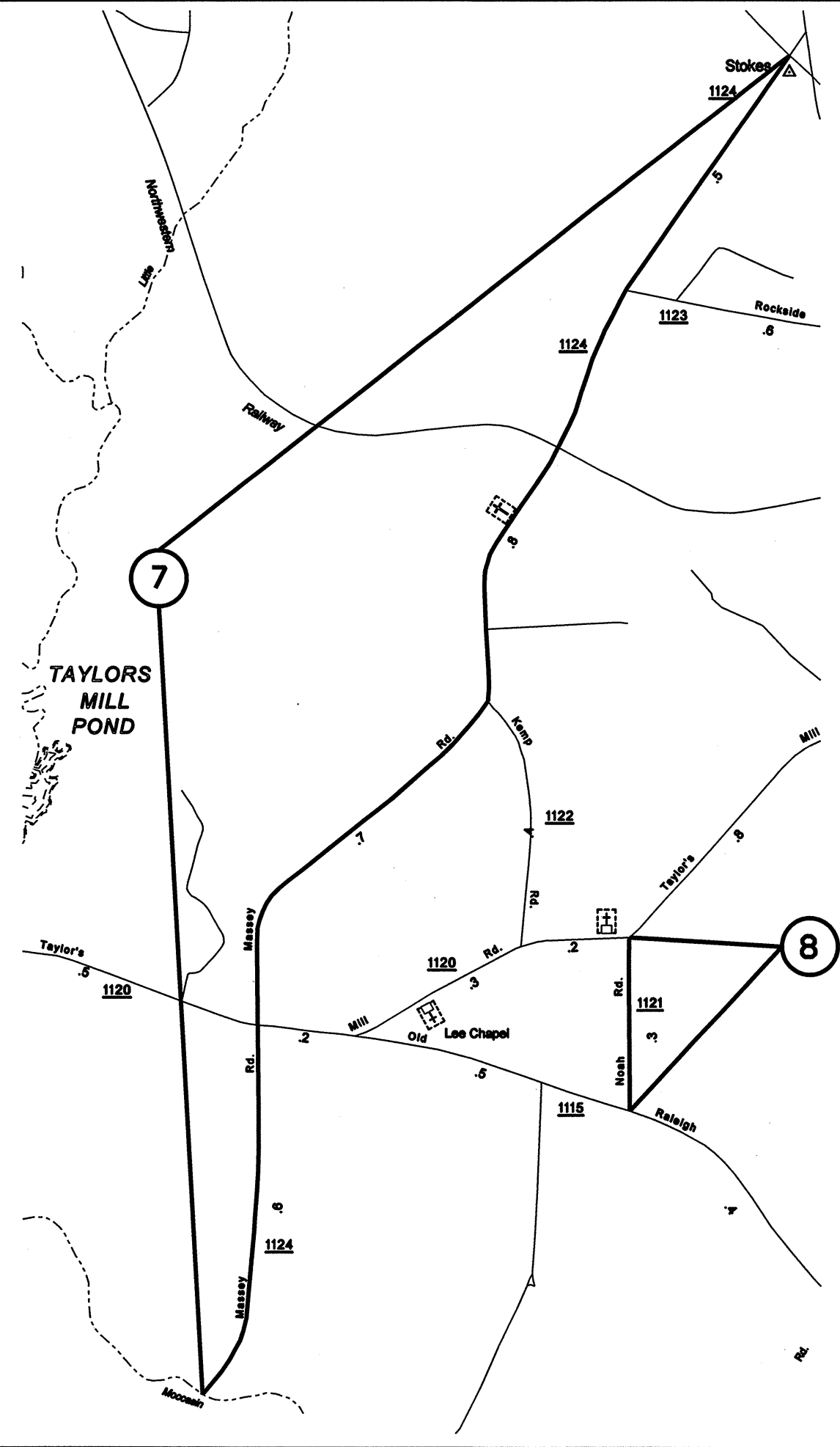
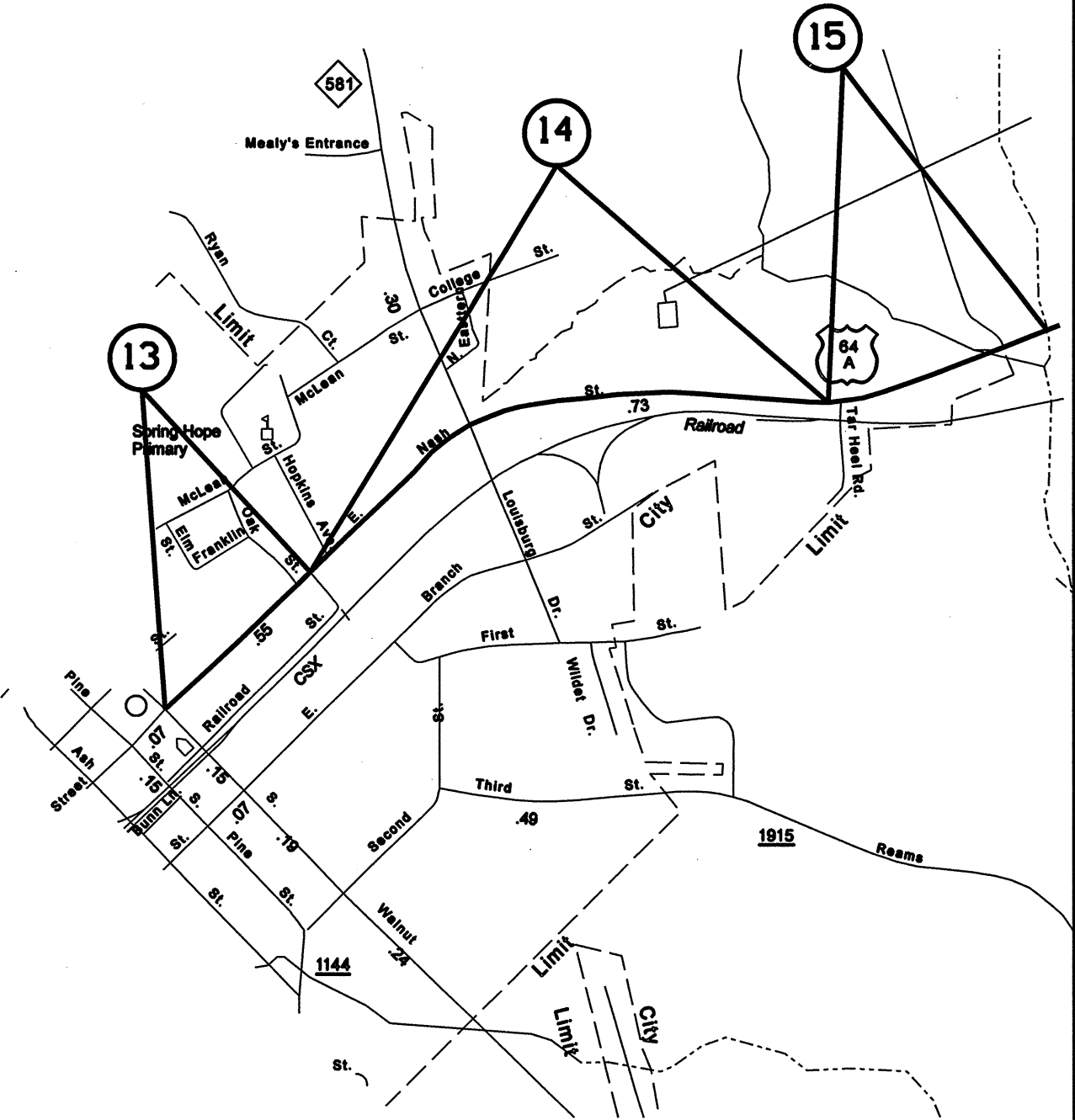
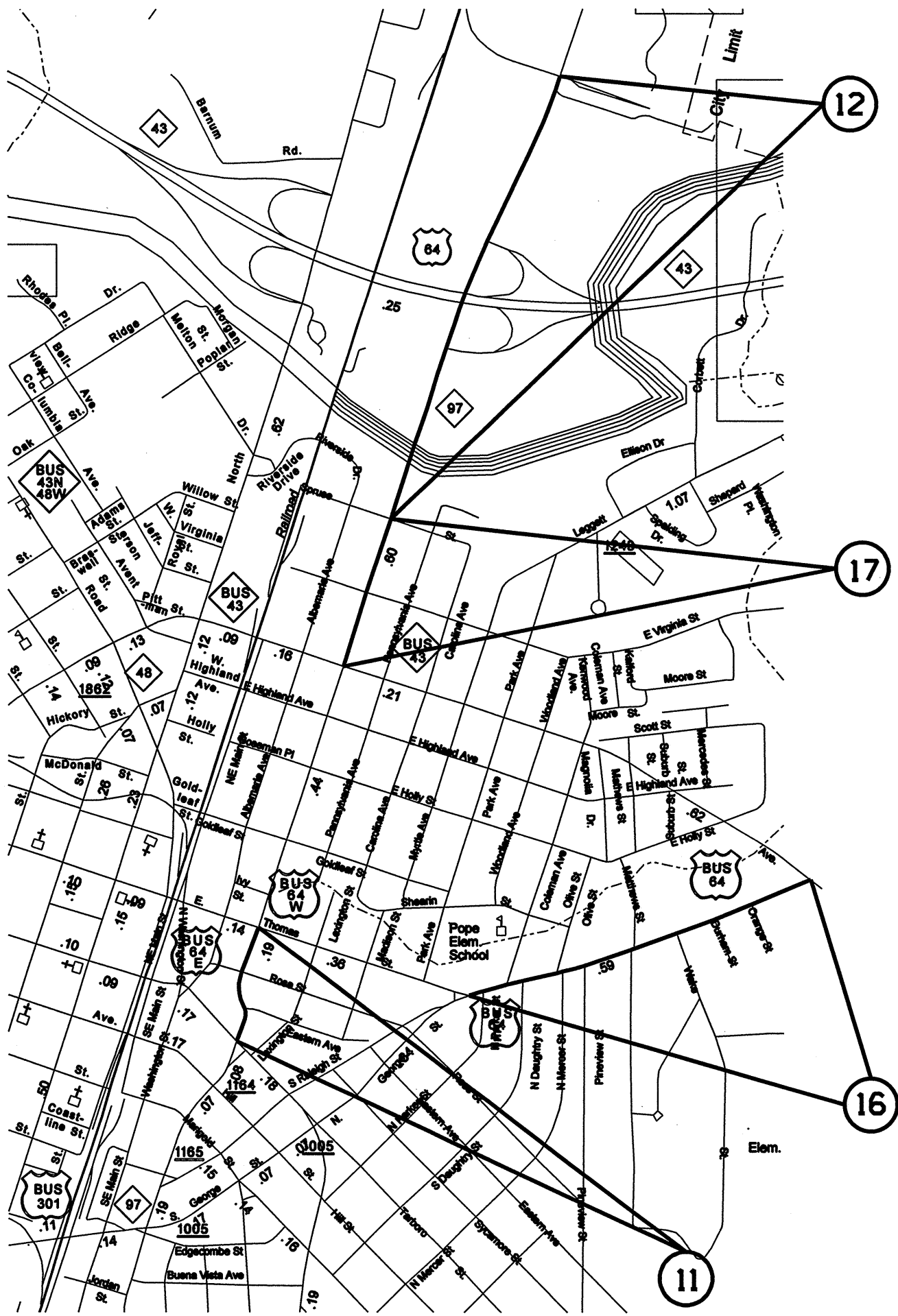


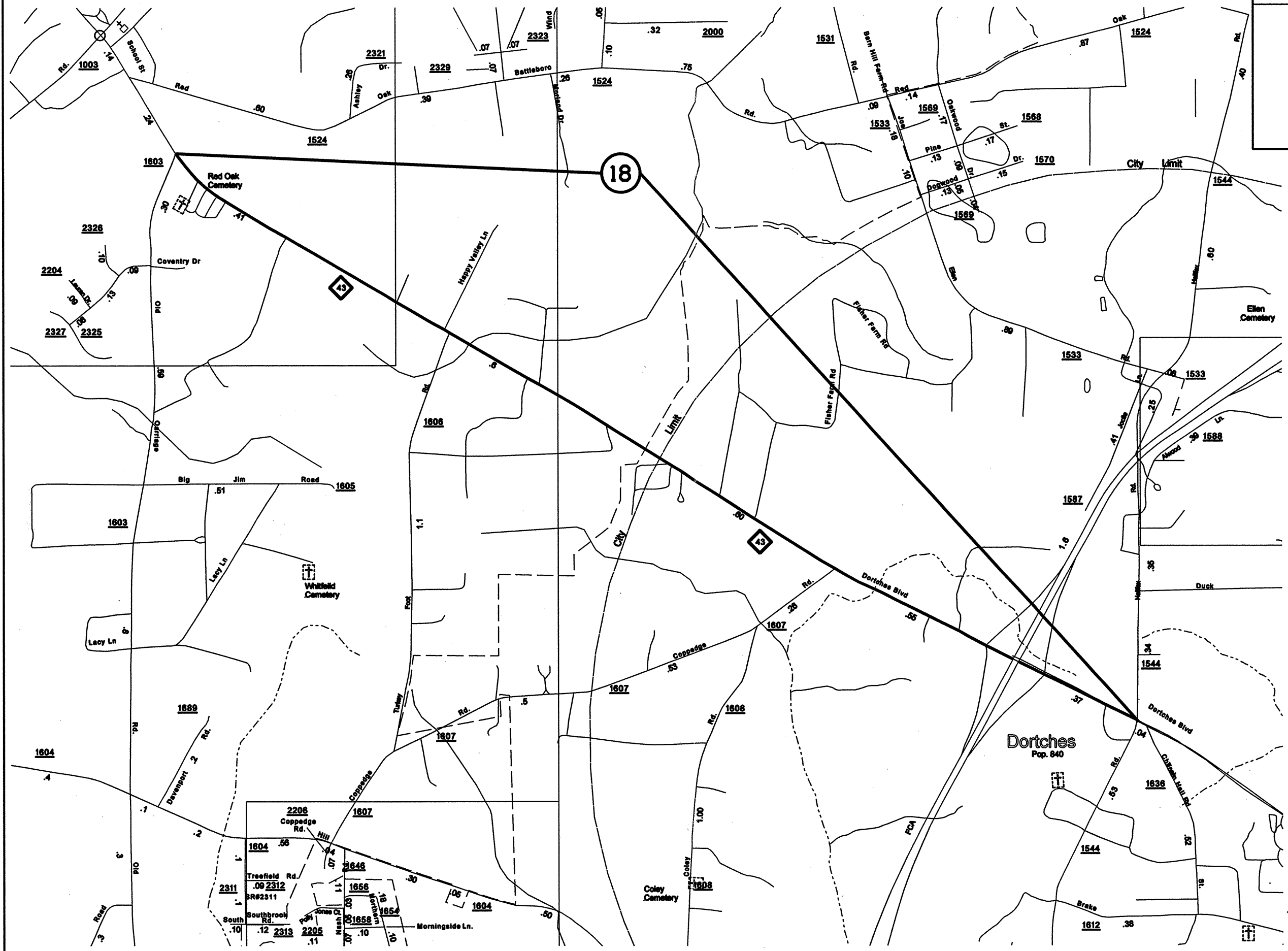
NASH COUNTY
RESURFACING MAPS





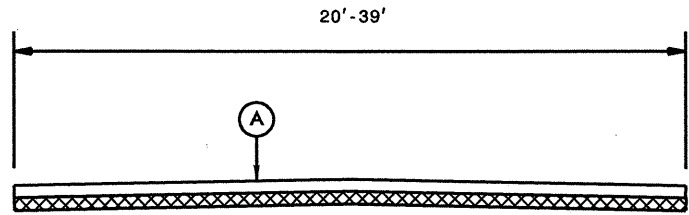
DATE: 11/11/10
 DRAWN BY: [unclear]
 CHECKED BY: [unclear]



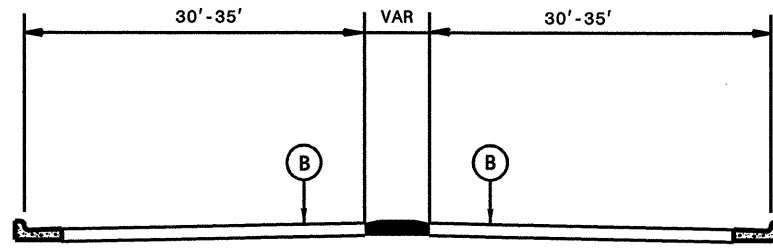


dgn
 prt
 DATE

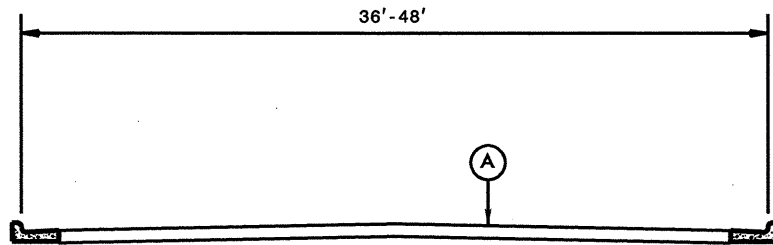
PAVEMENT SCHEDULE	
A	PROP. APPROX. 1.25" ASPHALT CONCRETE SURFACE COURSE, TYPE 89.5A, AT AN AVERAGE RATE OF 138 LBS. PER SQ. YD.
B	PROP. APPROX. 1.5" ASPHALT CONCRETE SURFACE COURSE, TYPE 89.5B, AT AN AVERAGE RATE OF 168 LBS. PER SQ. YD.
M	PROP. APPROX. 0"-1.5" ASPHALT MILLING.



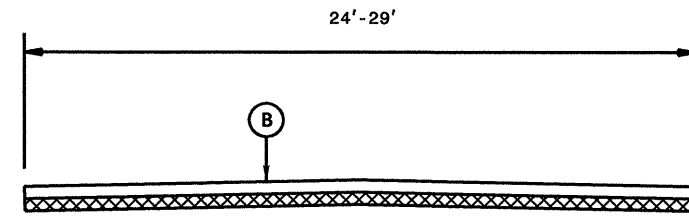
TYPICAL SECTION NO. 1



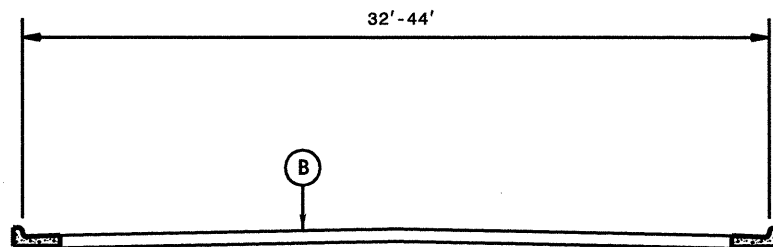
TYPICAL SECTION NO. 4



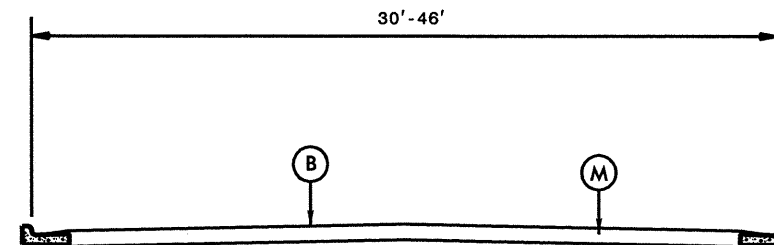
TYPICAL SECTION NO. 2



TYPICAL SECTION NO. 5



TYPICAL SECTION NO. 3



TYPICAL SECTION NO. 6

PROJECT NO.	SHEET NO.	TOTAL NO.
4CR.20641.10 & 4CR.10641.6	7	

SUMMARY OF QUANTITIES

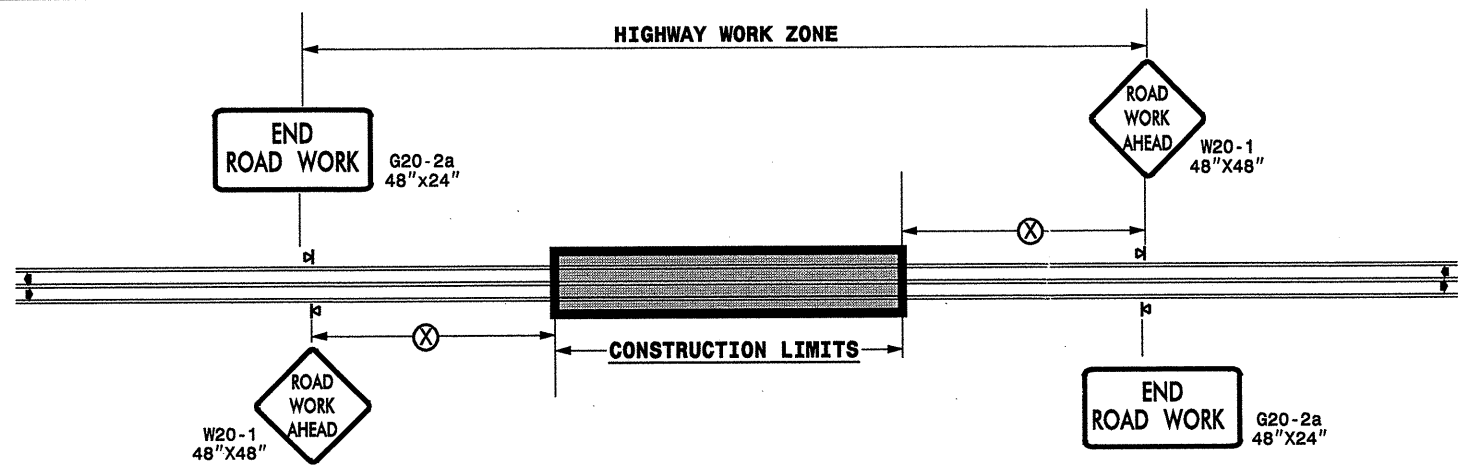
PROJECT NO	COUNTY	MAP NO	ROUTE	DESCRIPTION	TYP NO	LENGTH MI	WIDTH FT	0" TO 1.5" MILLING SY	SURFACE COURSE, SF9.5A TONS	SURFACE COURSE, S9.5B TONS	PG 64-22 PLANT MIX TONS	ADJ. OF CATCH BASIN EA	ADJ. OF MANHOLES EA	ADJ. OF METER OR VALVE BOX EA
4CR.20641.10	Nash	1	SR 1733	FROM SR 1544 TO ROBBINS AVE.	1	2.07	24		2,234		145			
		2	SR 1733	FROM ROBBINS AVE. TO BEGIN TAPER	2	0.18	48		436		28	2	3	8
		3	SR 1733	FROM TAPER TO US 301	2	0.09	36		153		10	4		7
		4	SR1134	START AT NC581 TO SR1941	1	2.9	20		2,394		156			
		5	SR1945	START AT SR1941 TO WILSON COUNTY LINE	1	4.6	20		3,958		257			
		6	SR1105	START AT SR1100 TO DEAD END	1	1.7	20		1,434		93			
		7	SR 1124	FROM US 264A TO JOHNSTON CTY LINE	1	2.5	20		2,064		134			
		8	SR 1121	FROM SR 1115 TO SR 1120	1	0.3	20		248		16			
		9	SR 1542	FROM 301 BUSINESS TO TURN LANE	1	0.49	25		605		40			
		10	SR 1542	FROM TURN LANE TO 301 BYPASS	1	0.33	39		650		42			
TOTAL FOR PROJ NO. 4CR.20641.10						15.16			14,176		921	6	3	15
4CR.10641.6	Edge-combe	11	NC 97	FROM US 64 BUS WEST TO US 64 BUS EAST	3	0.21	44			607	36	2	8	4
		12	NC 97	FROM JOINT AT CREEK BRIDGE TO SPRUCE ST.	4	0.77	64			2,433	146	8	1	
	Nash	13	US 64 ALT	FROM NC 581 TO TAPER	3	0.18	32			285	17	10		
		14	US 64 ALT	BEGINNING OF TAPER TO END OF C&G	6	0.51	30	8973		897	54	8	5	1
		15	US 64 ALT	FROM END OF C&G TO SPRING HOPE CL	5	0.5	29			818	49			
	Edge-combe	16	US 64 BUS	FROM THOMAS ST TO NC 43 BUS	6	0.6	46	16192		1,641	98	9	7	7
		17	NC 97	FROM SPRUCE ST TO EAST GRAND AVE	6	0.25	37	9768		457	27	5	4	1
	Nash	18	NC 43	FROM SR 1603 TO SR 1544	5	2.8	24			3,929	236			
TOTAL FOR PROJ NO. 4CR.10641.6						5.82		34933		11,067	663	42	25	13
GRAND TOTAL						20.98		34933	14,176	11,067	1,584	48	28	28

PROJECT NO.	SHEET NO.	TOTAL NO.
4CR.20641.10 & 4CR.10641.6	8	

THERMOPLASTIC AND PAINT QUANTITIES

PROJECT NO	COUNTY	MAP NO	ROUTE	DESCRIPTION	4685000000-E	4686000000-E		4810000000-E	
					4" X 90 M WHITE THERMO LF	4" X 120 M YELLOW THERMO LF	4" X 120 M WHITE THERMO LF	4" WHITE PAINT LF	4" YELLOW PAINT LF
4CR.20641.10	Nash	1	SR 1733	FROM SR 1544 TO ROBBINS AVE.				44,546	27,324
		2	SR 1733	FROM ROBBINS AVE. TO BEGIN TAPER					2,376
		3	SR 1733	FROM TAPER TO US 301					1,188
		4	SR1134	START AT NC581 TO SR1941				62,408	38,280
		5	SR1945	START AT SR1941 TO WILSON COUNTY LINE				98,992	60,720
		6	SR1105	START AT SR1100 TO DEAD END				36,584	22,440
		7	SR 1124	FROM US 264A TO JOHNSTON CTY LINE				53,800	33,000
		8	SR 1121	FROM SR 1115 TO SR 1120				6,456	3,960
		9	SR 1542	FROM 301 BUSINESS TO TURN LANE				10,545	6,468
		10	SR 1542	FROM TURN LANE TO 301 BYPASS				7,102	4,356
TOTAL FOR PROJ NO. 4CR.20641.10								320,433	200,112
								520,545	
4CR.10641.6	Edge-combe	11	NC 97	FROM US 64 BUS WEST TO US 64 BUS EAST		1,386			
		12	NC 97	FROM JOINT AT CREEK BRIDGE TO SPRUCE ST.	308		2,033		
	Nash	13	US 64 ALT	FROM NC 581 TO TAPER		1,188			
		14	US 64 ALT	BEGINNING OF TAPER TO END OF C&G		3,366			
		15	US 64 ALT	FROM END OF C&G TO SPRING HOPE CL	5,380	3,300			
	Edge-combe	16	US 64 BUS	FROM THOMAS ST TO NC 43 BUS		3,960			
		17	NC 97	FROM SPRUCE ST TO EAST GRAND AVE		1,650			
	Nash	18	NC 43	FROM SR 1603 TO SR 1544	30,128	18,480			
TOTAL FOR PROJ NO. 4CR.10641.6					35,816	33,330	2,033		
						35,363			
GRAND TOTAL					35,816	33,330	2,033	320,433	200,112
						35,363		520,545	

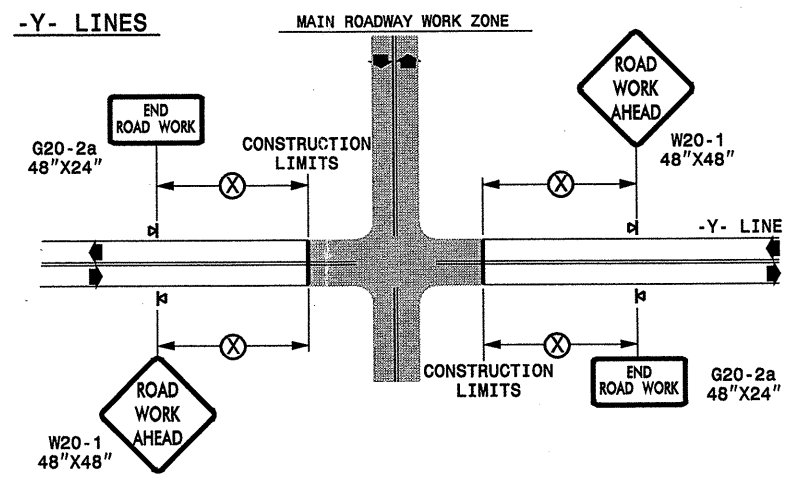
TWO-WAY UNDIVIDED ** (L-LINES)



POSTED SPEED LIMIT (M.P.H.)	RECOMMENDED MINIMUM SIGN SPACING
≤ 50	500'
≥ 55	1000'

STATE OF NORTH CAROLINA
DEPT. OF TRANSPORTATION
DIVISION OF HIGHWAYS
RALEIGH, N.C.

ROADWAYS INTERSECTING ALONG 2 WAY UNDIVIDED WORK ZONE (Y-LINES)



GENERAL NOTES

- USE FLUORESCENT ORANGE SHEETING (TYPE VII OR HIGHER) ON ALL ADVANCE WORK ZONE SIGNS.
- DO NOT INSTALL ADVANCE WARNING SIGNS MORE THAN 3 DAYS PRIOR TO BEGINNING OF WORK.
- ALL SIGN SPACING DIMENSIONS ARE APPROXIMATE, FIELD ADJUST AS NECESSARY OR AS DIRECTED.
- USE PORTABLE WORK ZONE SIGNS ONLY WITH PORTABLE WORK ZONE SIGN STANDS SPECIFICALLY DESIGNED FOR ONE ANOTHER. PORTABLE WORK ZONE SIGNS MAY BE ROLL UP OR APPROVED COMPOSITE.
- PROVIDE PORTABLE WORK ZONE SIGN STANDS, PORTABLE SIGNS AND SIGN SHEETING WHICH ARE LISTED ON THE NORTH CAROLINA DEPARTMENT OF TRANSPORTATION'S APPROVED PRODUCT LIST OR ACCEPTED AS TRAFFIC QUALIFIED BY THE TRAFFIC CONTROL UNIT.
- ** TWO-WAY UNDIVIDED ADVANCE WARNING SIGN CONFIGURATION MAY BE USED ON URBAN MULTI-LANE FACILITIES WHERE CONDITIONS LIMIT THE USE OF DUAL MOUNTED SIGNS AS DETERMINED BY THE ENGINEER.

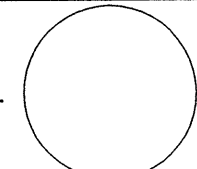
LEGEND

◀ PORTABLE SIGN

➡ DIRECTION OF TRAFFIC FLOW

DETAIL DRAWING
FOR TWO-WAY UNDIVIDED
WORK ZONE WARNING SIGNS

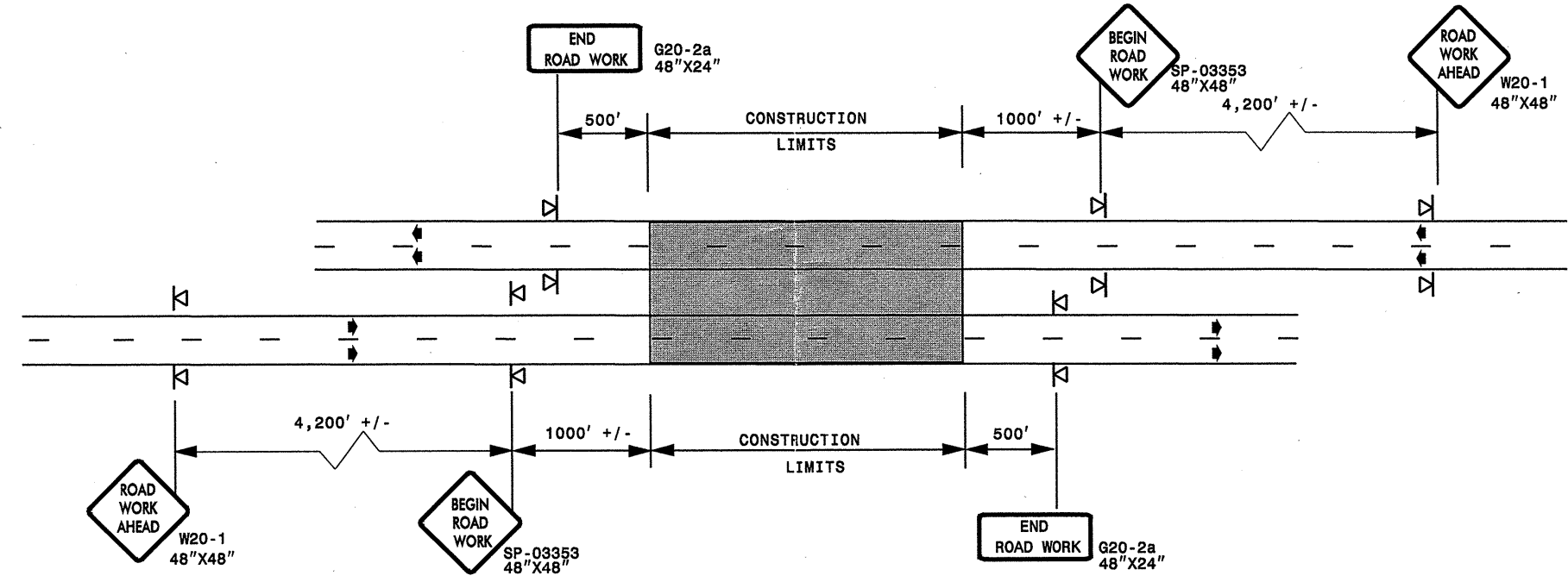
SHEET 1 OF 1

APPROVED: _____	DATE: _____	DETAIL DRAWING FOR TWO-WAY UNDIVIDED ADVANCED WORK ZONE WARNING SIGNS	
			
		DESIGN BY: _____	10-98
REVIEWED BY: _____	01/01	03/04	
		11/04	

31-MAR-2008 19:20 \\DOT\DFSROOT\TOI\GROUPS-WZTCCC\design\group4\resurfacing\resurfacing2007\div04\c202061_4cr106416etc_nash.nc97etc\c202061_4cr106416etc_2wayundivurbfrwysjuly2006.dgn
 pseymore AT WZTCCC231502

ADVANCE WORK ZONE WARNING SIGNING FOR FREEWAYS (4 LANES OR GREATER)

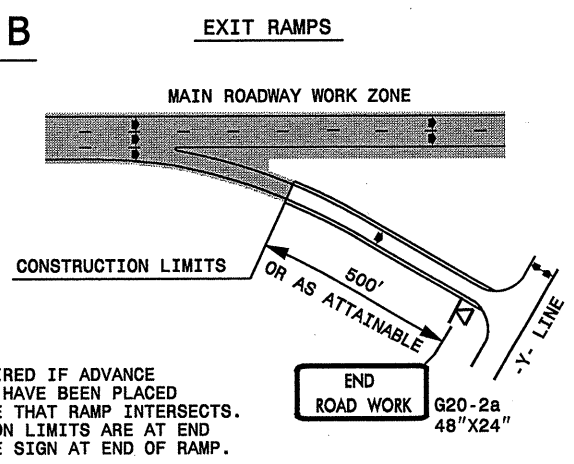
DETAIL A



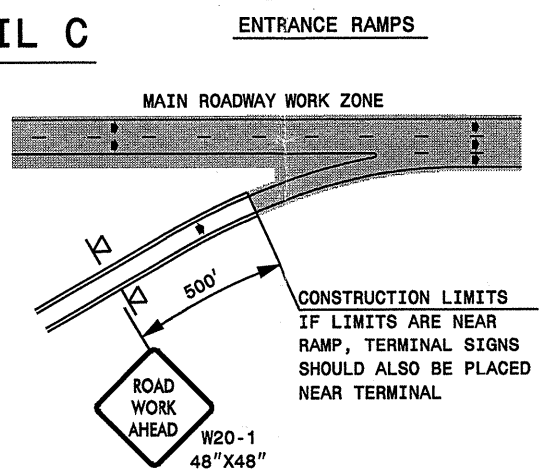
STATE OF NORTH CAROLINA
DEPT. OF TRANSPORTATION
DIVISION OF HIGHWAYS
RALEIGH, N.C.

ROADWAYS INTERSECTING ALONG FREEWAY WORK ZONE (Y-LINES)

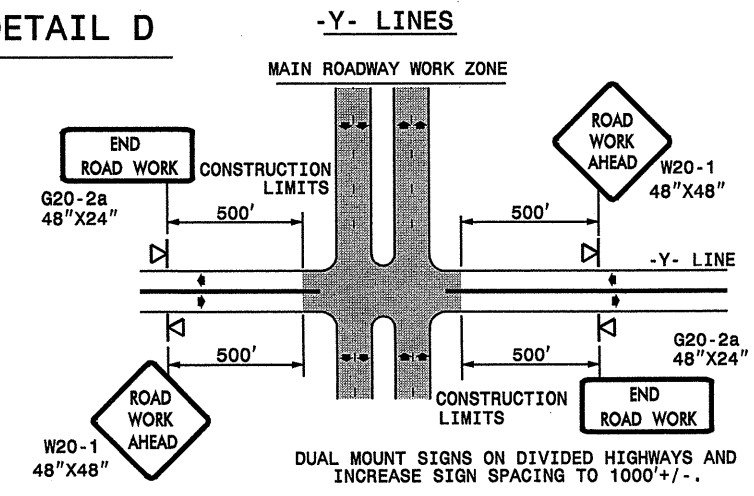
DETAIL B



DETAIL C



DETAIL D



NOTE:
SIGN NOT REQUIRED IF ADVANCE WARNING SIGNS HAVE BEEN PLACED ALONG -Y- LINE THAT RAMP INTERSECTS. IF CONSTRUCTION LIMITS ARE AT END OF RAMP, PLACE SIGN AT END OF RAMP.

GENERAL NOTES

- USE FLUORESCENT ORANGE SHEETING (TYPE VII OR HIGHER) ON ALL ADVANCE WORK ZONE SIGNS.
- DO NOT INSTALL ADVANCE WARNING SIGNS MORE THAN 3 DAYS PRIOR TO BEGINNING OF WORK.
- ALL SIGN SPACING DIMENSIONS ARE APPROXIMATE, FIELD ADJUST AS NECESSARY OR AS DIRECTED.
- USE PORTABLE WORK ZONE SIGNS ONLY WITH PORTABLE WORK ZONE SIGN STANDS SPECIFICALLY DESIGNED FOR ONE ANOTHER. PORTABLE WORK ZONE SIGNS MAY BE ROLL UP OR APPROVED COMPOSITE.
- PROVIDE PORTABLE WORK ZONE SIGN STANDS, PORTABLE SIGNS AND SIGN SHEETING WHICH ARE LISTED ON THE NORTH CAROLINA DEPARTMENT OF TRANSPORTATION'S APPROVED PRODUCT LIST OR ACCEPTED AS TRAFFIC QUALIFIED BY THE TRAFFIC CONTROL UNIT.
- ** TWO-WAY UNDIVIDED ADVANCE WARNING SIGN CONFIGURATION MAY BE USED ON MULTI-LANE FACILITIES WHERE CONDITIONS LIMIT THE USE OF DUAL MOUNTED SIGNS AS DETERMINED BY THE ENGINEER.

LEGEND

◀ PORTABLE SIGN

➡ DIRECTION OF TRAFFIC FLOW

**DETAIL DRAWING
FOR FREEWAYS
WORK ZONE WARNING SIGNS
(SHORT-DURATION LANE CLOSURES)**

APPROVED: _____	DATE: _____		DETAIL DRAWING FOR FREEWAYS WORK ZONE WARNING SIGNS									
			SCALE: NONE	<table border="1"> <tr> <th colspan="2">REVISIONS</th> </tr> <tr> <td>7-98</td> <td>10/01</td> </tr> <tr> <td>10-98</td> <td>03/04</td> </tr> <tr> <td>01/01</td> <td>11/04</td> </tr> </table>		REVISIONS		7-98	10/01	10-98	03/04	01/01
REVISIONS												
7-98	10/01											
10-98	03/04											
01/01	11/04											
DWG. BY: _____ DESIGN BY: _____ REVIEWED BY: _____		DATE: _____ DWG. BY: _____ DESIGN BY: _____ REVIEWED BY: _____	DATE: _____ DWG. BY: _____ DESIGN BY: _____ REVIEWED BY: _____	DATE: _____ DWG. BY: _____ DESIGN BY: _____ REVIEWED BY: _____								

31-MAR-2008 19:21
 \\DOT\DFSROOT\GROUPS-WZTCCC\design\resurfacing\resurfacing2007\div04\c202061_4cr106416etc_nash.nc97etc\c202061_4cr106416etc_fr ee4lanesgreat.july2006.dgn
 AT WZTCC237502
 pseymore