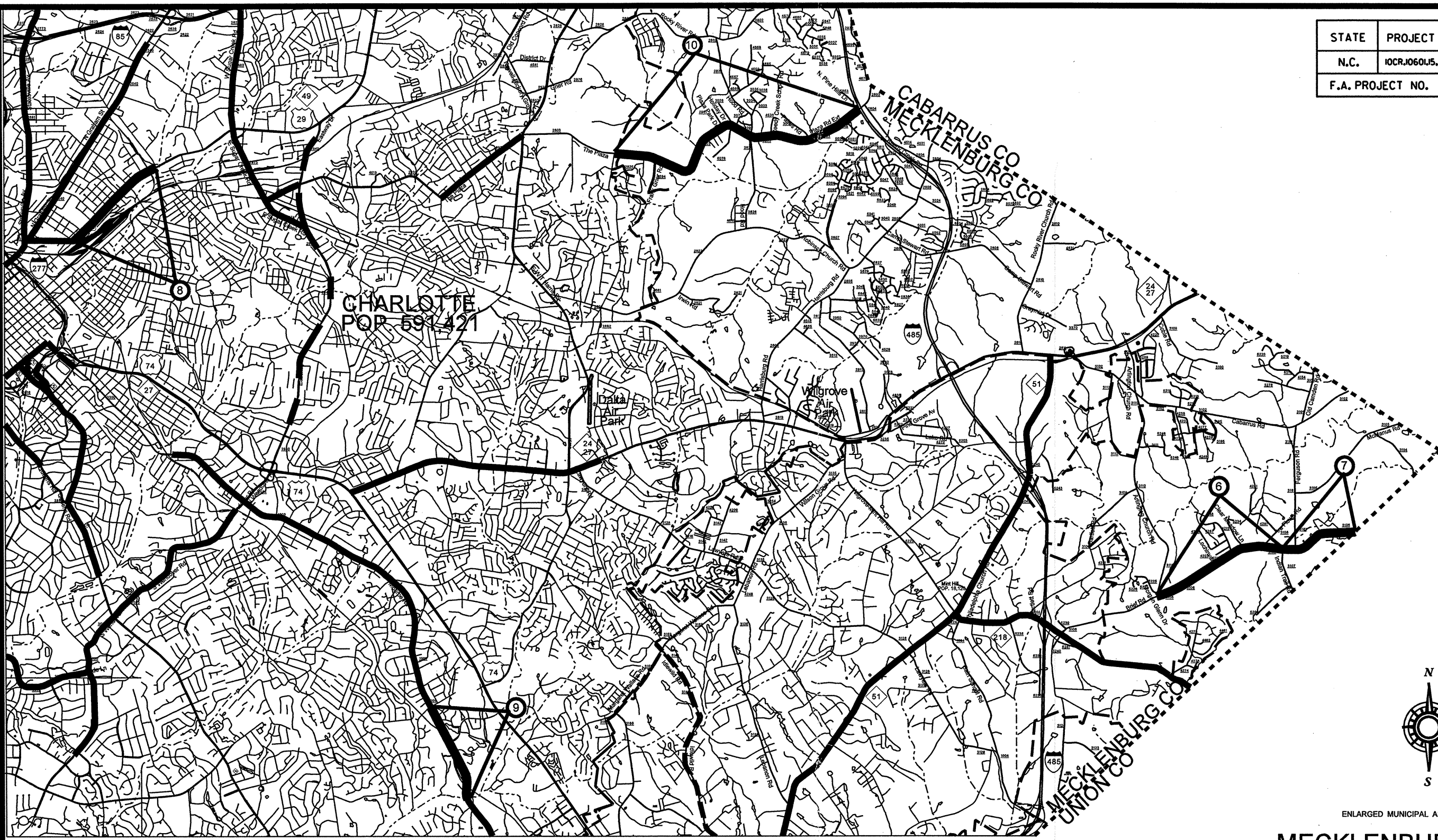


STATE	PROJECT NO.	SHEET NO.	TOTAL SHEETS
N.C.	10CRJ0601,5, ETC.	1	
F.A. PROJECT NO.			

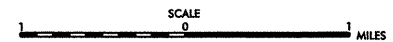


ENLARGED MUNICIPAL AND SUBURBAN AREAS

MECKLENBURG COUNTY

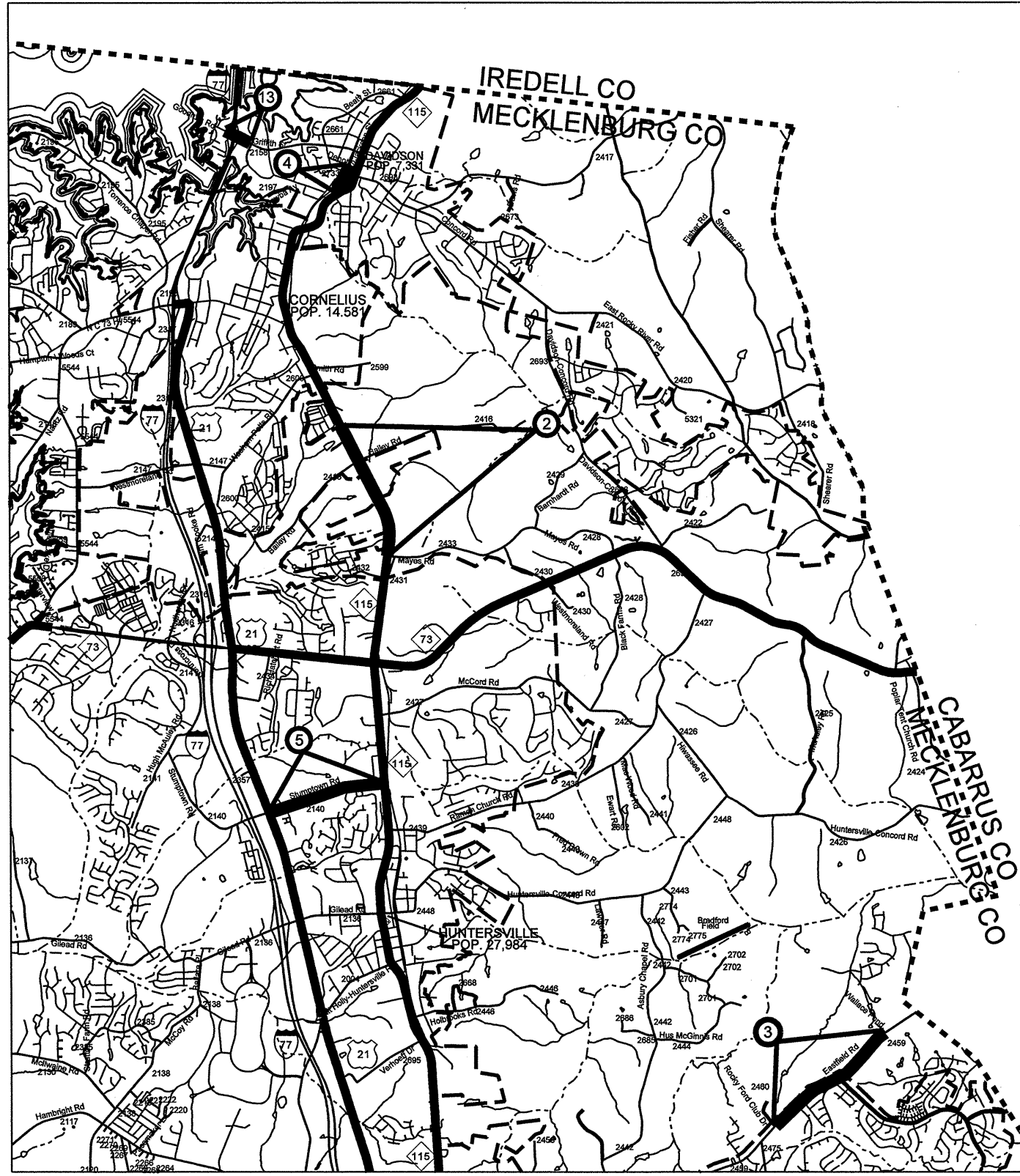
NORTH CAROLINA

PREPARED BY THE
 NORTH CAROLINA DEPARTMENT OF TRANSPORTATION
 DIVISION OF HIGHWAYS - GIS UNIT
 IN COOPERATION WITH THE
 U.S. DEPARTMENT OF TRANSPORTATION
 FEDERAL HIGHWAY ADMINISTRATION

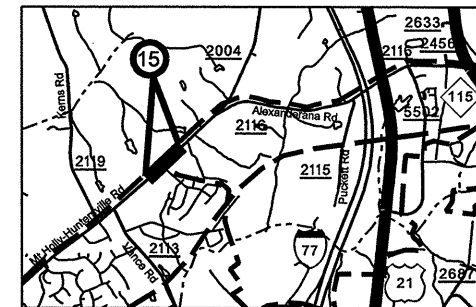


MAP #	ROUTE	DESCRIPTION	MAP #	ROUTE	DESCRIPTION
1	US 74 (WILKINSON BLVD)	FROM PVT JOINT @ I-485 TO SR 1641 (LITTLE ROCK RD)	8	US 29	FROM DALTON AVE TO ATANDO AVE
2	NC 115	FROM CORNELIUS CL TO SR 2433 (MAYES RD)	9	SR 1009 (MONROE RD)	FROM MCALPINE CREEK TO THERMAL RD
3	SR 2459 (EASTFIELD RD)	FROM SR 2460 (ROCKY FORD CLUB RD) TO WALLACE POND RD	10	SR 2803 (PLAZA RD EXT)	FROM PVT JOINT @ I-485 TO PLOTT RD.
4	SR 2733 (JACKSON ST)	FROM DEPOT ST TO NC 115	11	SR 2025 (OAKDALE RD)	FROM WOODLAND CIRCLE TO THE PVT JOINT @ I-485
5	SR 2140 (STUMPTOWN RD)	FROM NC 115 TO US 21	12	SR 2008 (PLEASANT GROVE RD)	FROM NC 16 TO THE PVT JOINT @ SR 2025 (OAKDALE RD)
6	SR 3106 (BRIEF RD)	FROM SR 3110 (ARLINGTON CH RD) TO SR 3107 (INDIANTRAIL RD)	13	SR 2158 (GRIFFITH ST)	FROM APPROX 330' WEST OF I-77 BRIDGE TO APPROX 400' EAST OF I-77 BRIDGE
7	SR 3106 (BRIEF RD)	FROM UNION CO LINE TO SR 3107 (INDIANTRAIL RD)	14	SR 1156 (YORKMONT RD)	FROM LOCHLAINE DR TO THE PVT JOINT 0.4 MILES EAST OF TYVOLA RD
			15	SR 2004 (MT. HOLLY-HUNTERSVILLE RD)	FROM THE PVT JOINT 1400' EAST OF VANCE RD. TO 1400' WEST OF ALEXANDERANA RD

STATE	PROJECT NO.	SHEET NO.	TOTAL SHEETS
N.C.	10CR106015, ETC.	2	
F.A. PROJECT NO.			



MAP #	ROUTE	DESCRIPTION
1	US 74 (WILKINSON BLVD)	FROM PVT JOINT @ I-485 TO SR 1641 (LITTLE ROCK RD)
2	NC 115	FROM CORNELIUS CL TO SR 2433 (MAYES RD)
3	SR 2459 (EASTFIELD RD)	FROM SR 2460 (ROCKY FORD CLUB RD) TO WALLACE POND RD
4	SR 2733 (JACKSON ST)	FROM DEPOT ST TO NC 115
5	SR 2140 (STUMPTOWN RD)	FROM NC 115 TO US 21
6	SR 3106 (BRIEF RD)	FROM SR 3110 (ARLINGTON CH RD) TO SR 3107 (INDIANTRAIL RD)
7	SR 3106 (BRIEF RD)	FROM UNION CO LINE TO SR 3107 (INDIANTRAIL RD)
8	US 29	FROM DALTON AVE TO ATANDO AVE
9	SR 1009 (MONROE RD)	FROM MCALPINE CREEK TO THERMAL RD
10	SR 2803 (PLAZA RD EXT)	FROM PVT JOINT @ I-485 TO PLOTT RD.
11	SR 2025 (OAKDALE RD)	FROM WOODLAND CIRCLE TO THE PVT JOINT @ I-485
12	SR 2008 (PLEASANT GROVE RD)	FROM NC 16 TO THE PVT JOINT @ SR 2025 (OAKDALE RD)
13	SR 2158 (GRIFFITH ST)	FROM APPROX 330' WEST OF I-77 BRIDGE TO APPROX 400' EAST OF I-77 BRIDGE
14	SR 1156 (YORKMONT RD)	FROM LOCHLAINE DR TO THE PVT JOINT 0.4 MILES EAST OF TYVOLA RD
15	SR 2004 (MT. HOLLY-HUNTERSVILLE RD)	FROM THE PVT JOINT 1400' EAST OF VANCE RD. TO 1400' WEST OF ALEXANDERANA RD



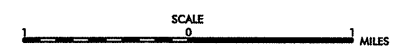
ENLARGED MUNICIPAL AND SUBURBAN AREAS

MECKLENBURG COUNTY

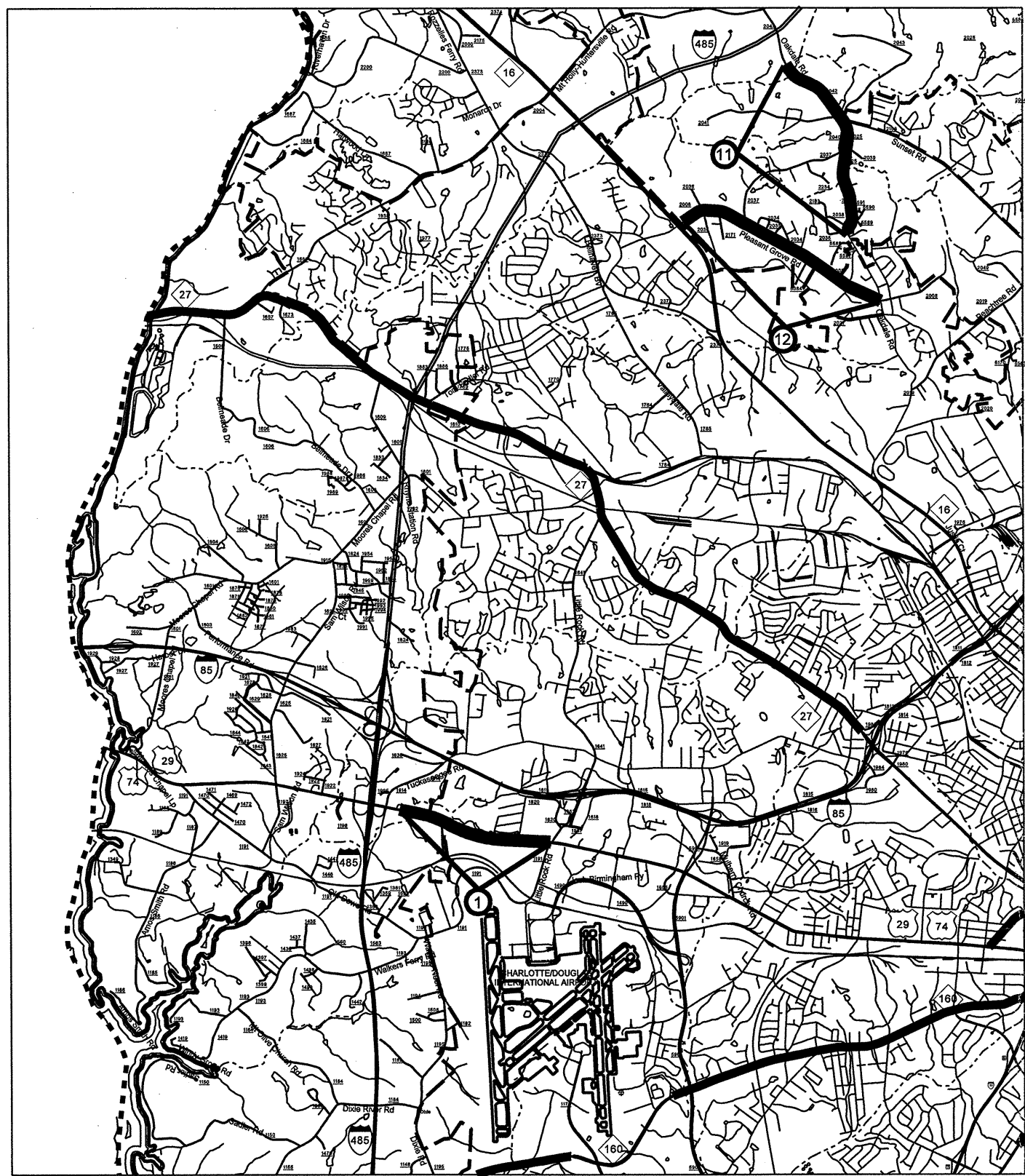
NORTH CAROLINA

PREPARED BY THE
 NORTH CAROLINA DEPARTMENT OF TRANSPORTATION
 DIVISION OF HIGHWAYS - GIS UNIT

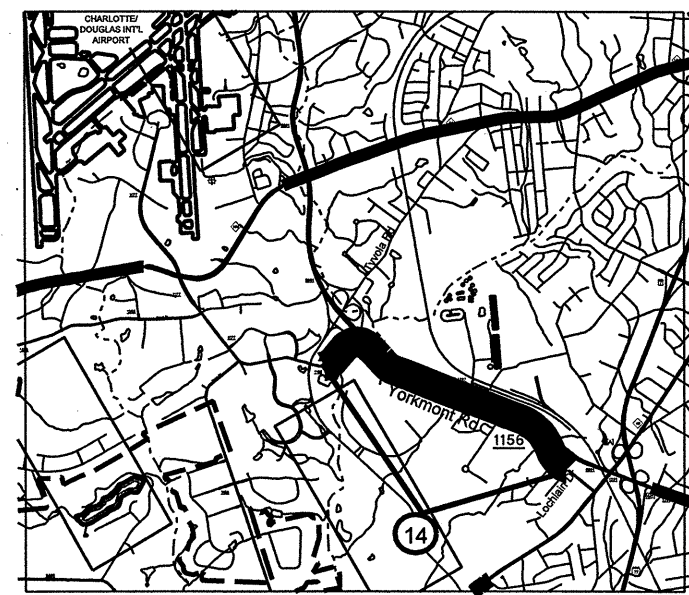
IN COOPERATION WITH THE
 U.S. DEPARTMENT OF TRANSPORTATION
 FEDERAL HIGHWAY ADMINISTRATION



STATE	PROJECT NO.	SHEET NO.	TOTAL SHEETS
N.C.	10CR10601.5, ETC.	3	
F.A. PROJECT NO.			



MAP #	ROUTE	DESCRIPTION
1	US 74 (WILKINSON BLVD)	FROM PVT JOINT @ I-485 TO SR 1641 (LITTLE ROCK RD)
2	NC 115	FROM CORNELIUS CL TO SR 2433 (MAYES RD)
3	SR 2459 (EASTFIELD RD)	FROM SR 2460 (ROCKY FORD CLUB RD) TO WALLACE POND RD
4	SR 2733 (JACKSON ST)	FROM DEPOT ST TO NC 115
5	SR 2140 (STUMPTOWN RD)	FROM NC 115 TO US 21
6	SR 3106 (BRIEF RD)	FROM SR 3110 (ARLINGTON CH RD) TO SR 3107 (INDIANTRAIL RD)
7	SR 3106 (BRIEF RD)	FROM UNION CO LINE TO SR 3107 (INDIANTRAIL RD)
8	US 29	FROM DALTON AVE TO ATANDO AVE
9	SR 1009 (MONROE RD)	FROM MCALPINE CREEK TO THERMAL RD
10	SR 2803 (PLAZA RD EXT)	FROM PVT JOINT @ I-485 TO PLOTT RD.
11	SR 2025 (OAKDALE RD)	FROM WOODLAND CIRCLE TO THE PVT JOINT @ I-485
12	SR 2008 (PLEASANT GROVE RD)	FROM NC 16 TO THE PVT JOINT @ SR 2025 (OAKDALE RD)
13	SR 2158 (GRIFFITH ST)	FROM APPROX 330' WEST OF I-77 BRIDGE TO APPROX 400' EAST OF I-77 BRIDGE
14	SR 1156 (YORKMONT RD)	FROM LOCHLAINE DR TO THE PVT JOINT 0.4 MILES EAST OF TVVOLA RD
15	SR 2004 (MT. HOLLY-HUNTERSVILLE RD)	FROM THE PVT JOINT 1400' EAST OF VANCE RD. TO 1400' WEST OF ALEXANDERANA RD



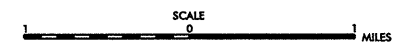
ENLARGED MUNICIPAL AND SUBURBAN AREAS

MECKLENBURG COUNTY

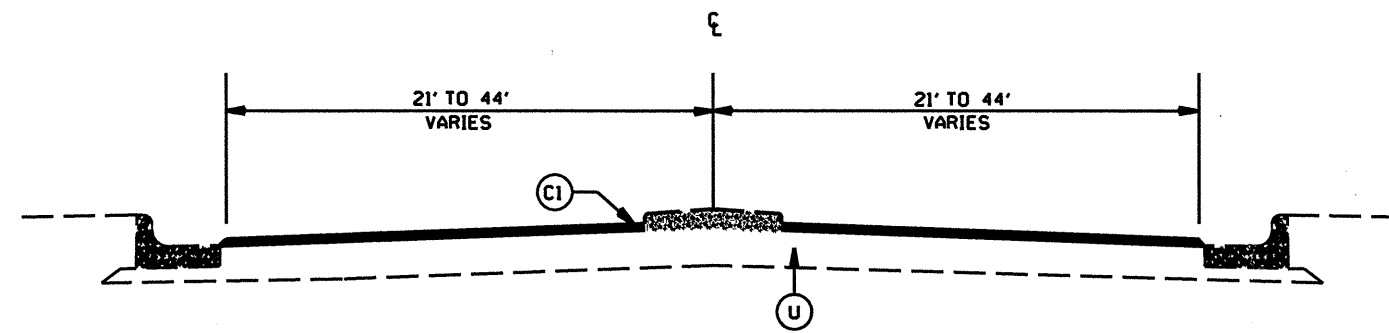
NORTH CAROLINA

PREPARED BY THE
NORTH CAROLINA DEPARTMENT OF TRANSPORTATION
DIVISION OF HIGHWAYS - GIS UNIT

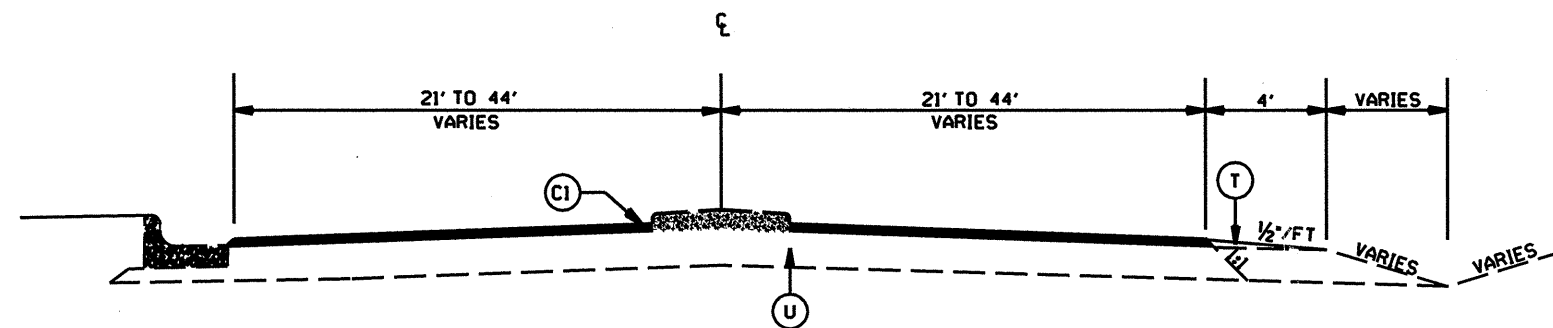
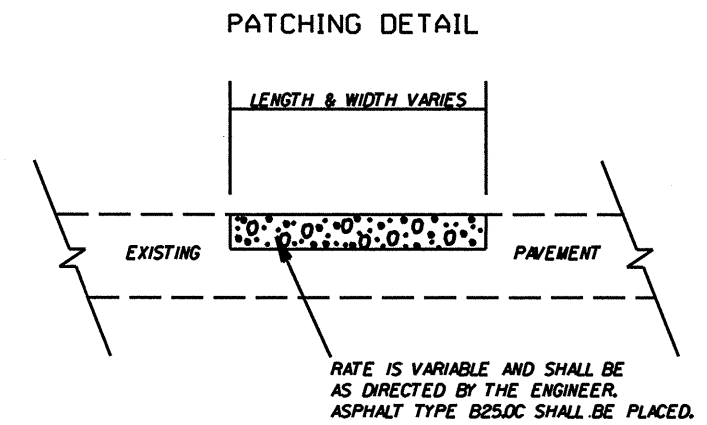
IN COOPERATION WITH THE
U.S. DEPARTMENT OF TRANSPORTATION
FEDERAL HIGHWAY ADMINISTRATION



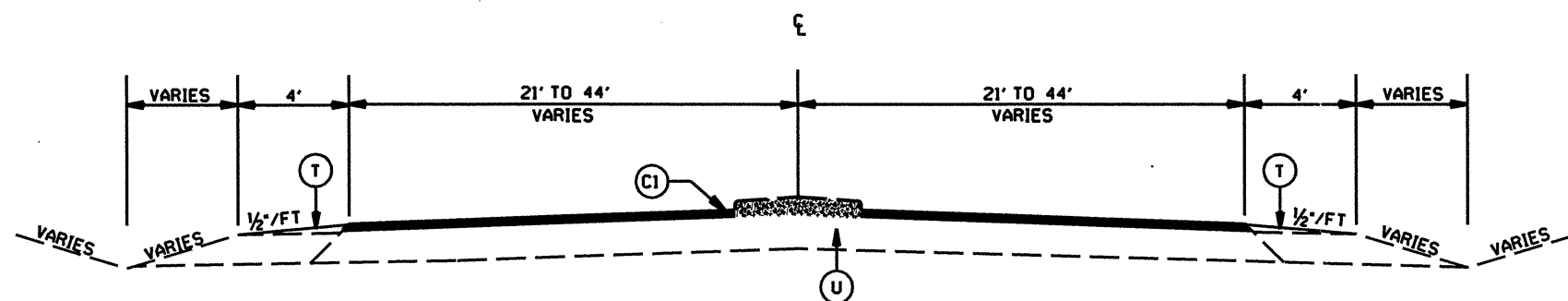
STATE	PROJECT NO.	SHEET NO.	TOTAL SHEETS
N.C.	10CR.1060L5, ETC.	4	
F.A. PROJECT NO.			



TYPICAL SECTION NO. 3



TYPICAL SECTION NO. 2



TYPICAL SECTION NO. 1

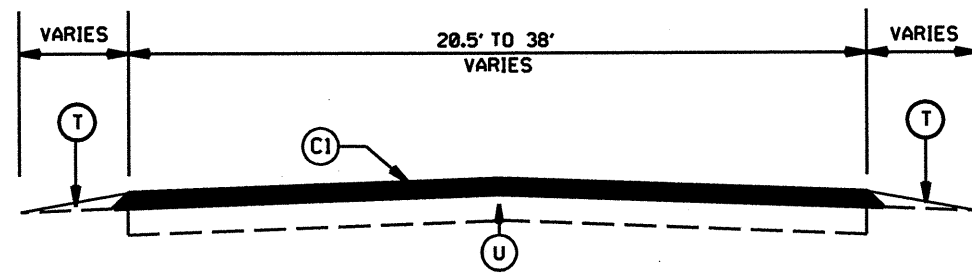
PAVEMENT SCHEDULE

(C1)	PROP. APPROX. 1.5" ASPHALT CONC. SURFACE COURSE, TYPE S9.5C, AT AN AVERAGE RATE OF 168 LBS. PER SQ. YD.
(T)	SHOULDER RECONSTRUCTION
(U)	EXISTING PAVEMENT
(V1)	MILLING 1.5" DEPTH
(V2)	MILLING 0" TO 1.5" DEPTH

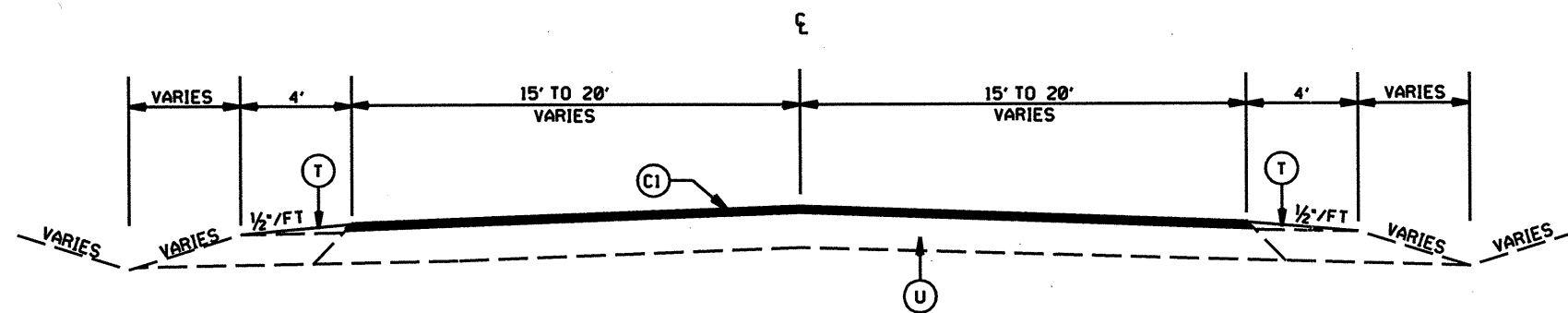
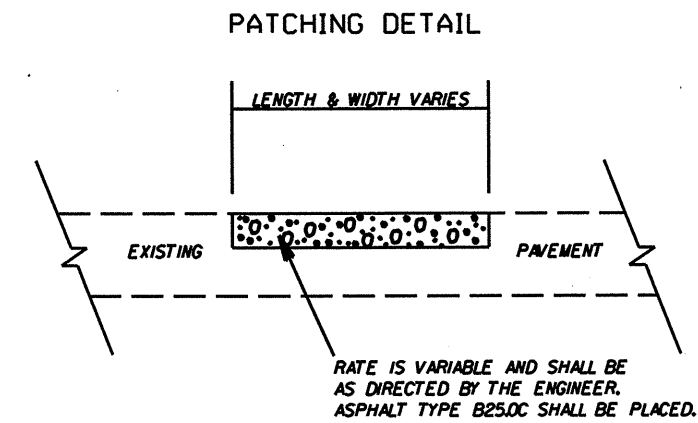
2008 MECKLENBURG COUNTY RESURFACING

SCALE	-NA-		REVISIONS
DATE	2-04-08		
DWG. BY	TWB		
DESIGN BY	TWB		
APPROVED	LW		

STATE	PROJECT NO.	SHEET NO.	TOTAL SHEETS
N.C.	10CR.1060L5, ETC.	5	
F.A. PROJECT NO.			



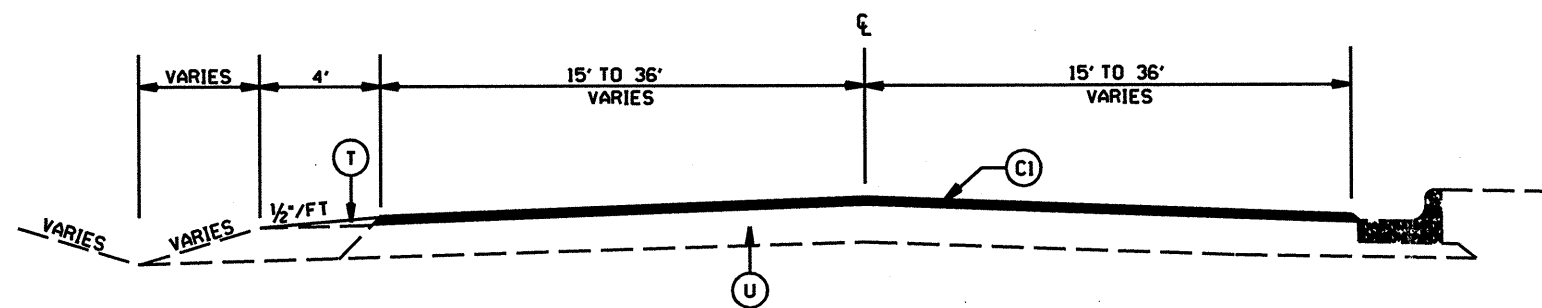
TYPICAL SECTION NO. 6



TYPICAL SECTION NO. 5


PAVEMENT SCHEDULE

(C1)	PROP. APPROX. 1.5" ASPHALT CONC. SURFACE COURSE, TYPE S9.5C, AT AN AVERAGE RATE OF 168 LBS. PER SQ. YD.
(T)	SHOULDER RECONSTRUCTION
(U)	EXISTING PAVEMENT
(V1)	MILLING 1.5" DEPTH
(V2)	MILLING 0" TO 1.5" DEPTH

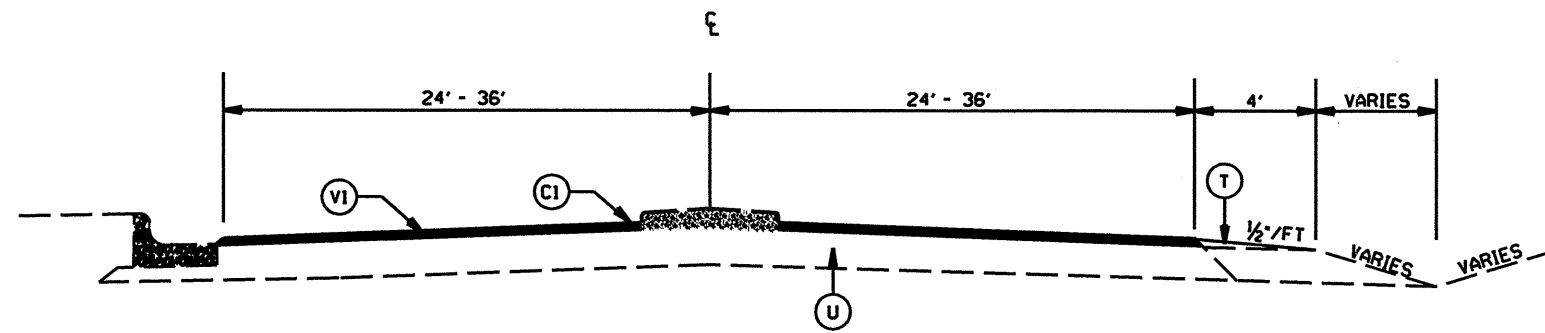


TYPICAL SECTION NO. 4

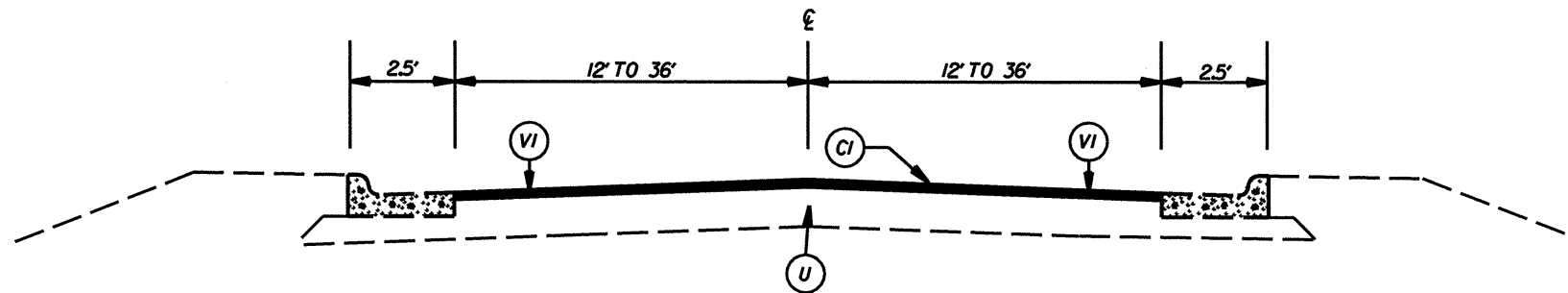
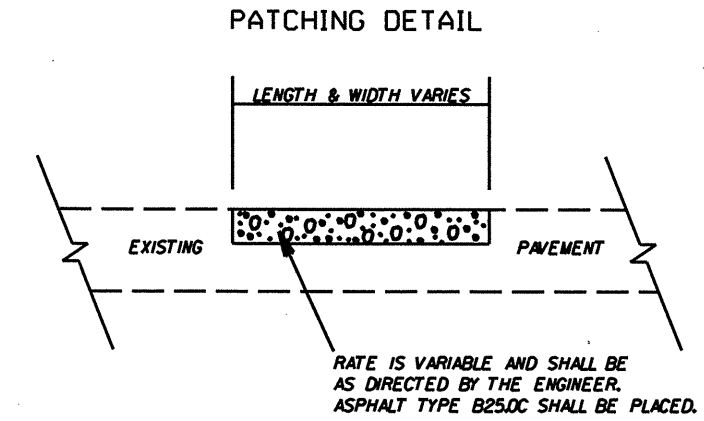
2008 MECKLENBURG COUNTY RESURFACING

SCALE	1"=50'		REVISIONS
DATE	6-20-06		
DWG. BY	RWB		
DESIGN BY	RWB		
APPROVED	KC		

STATE	PROJECT NO.	SHEET NO.	TOTAL SHEETS
N.C.	10CR.1060145, ETC.	6	
F.A. PROJECT NO.			



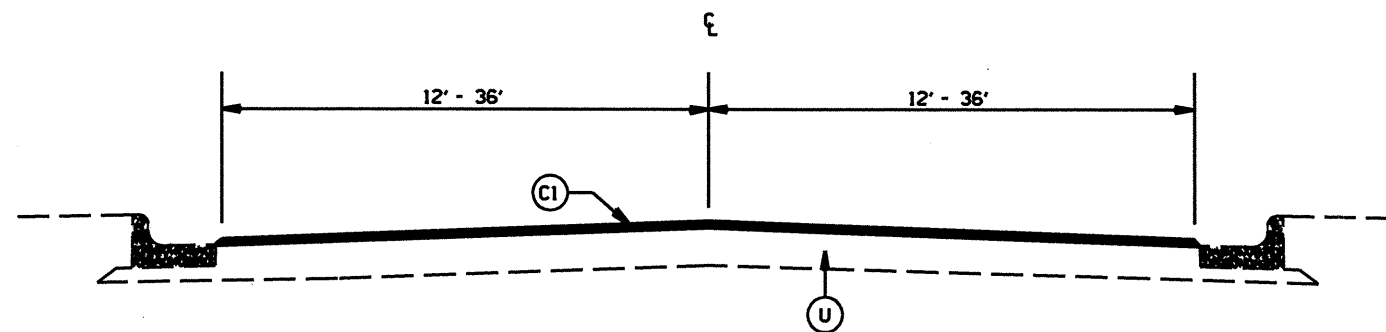
TYPICAL SECTION NO. 9



TYPICAL SECTION NO. 8

PAVEMENT SCHEDULE

(C1)	PROP. APPROX. 1.5" ASPHALT CONC. SURFACE COURSE, TYPE S9.5C, AT AN AVERAGE RATE OF 168 LBS. PER SQ. YD.
(T)	SHOULDER RECONSTRUCTION
(U)	EXISTING PAVEMENT
(V1)	MILLING 1.5" DEPTH
(V2)	MILLING 0" TO 1.5" DEPTH

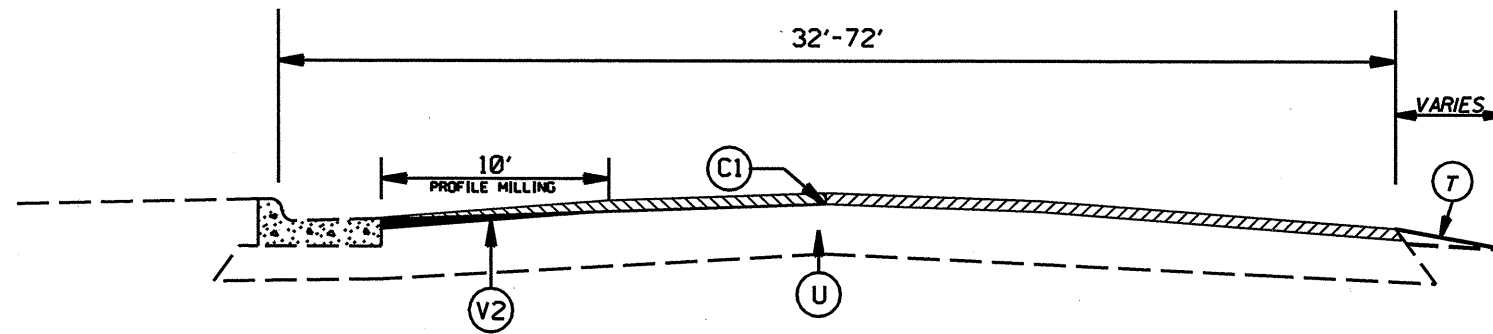


TYPICAL SECTION NO. 7

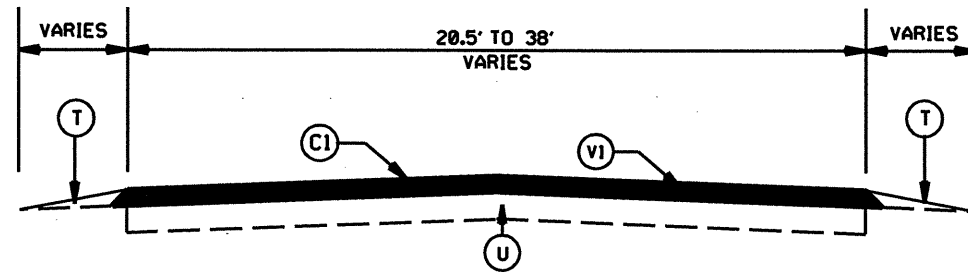
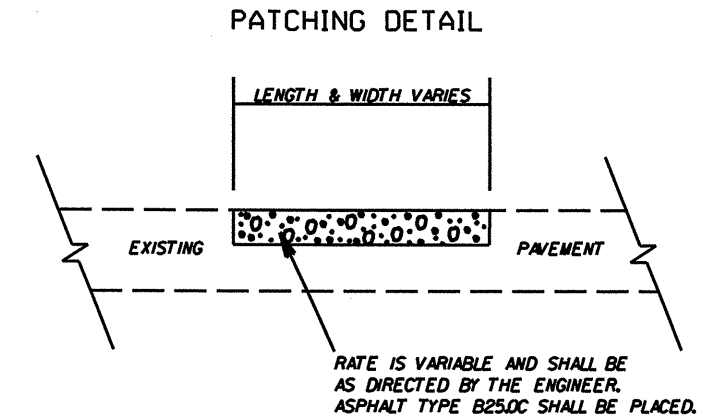
2008 MECKLENBURG COUNTY RESURFACING

SCALE	-NA-		REVISIONS
DATE	2-04-08		
DWG. BY	TWB		
DESIGN BY	TWB		
APPROVED	LM		

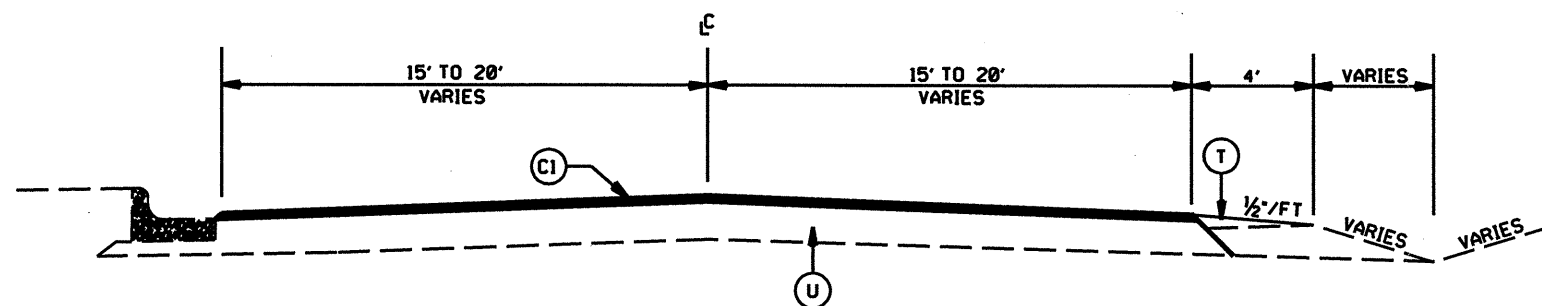
STATE	PROJECT NO.	SHEET NO.	TOTAL SHEETS
N.C.	10CR.10601J5, ETC.	7	
F.A. PROJECT NO.			



TYPICAL SECTION NO. 12
FOR C&G SECTIONS AS DIRECTED
BY THE ENGINEER.



TYPICAL SECTION NO. 11



TYPICAL SECTION NO. 10

PAVEMENT SCHEDULE

(C1)	PROP. APPROX. 1.5" ASPHALT CONC. SURFACE COURSE, TYPE S9.5C, AT AN AVERAGE RATE OF 168 LBS. PER SQ. YD.
(T)	SHOULDER RECONSTRUCTION
(U)	EXISTING PAVEMENT
(V1)	MILLING 1.5" DEPTH
(V2)	MILLING 0" TO 1.5" DEPTH

2008 MECKLENBURG COUNTY RESURFACING

SCALE -NA-
DATE 2-04-08
DWG. BY TWB
DESIGN BY TWB
APPROVED LM

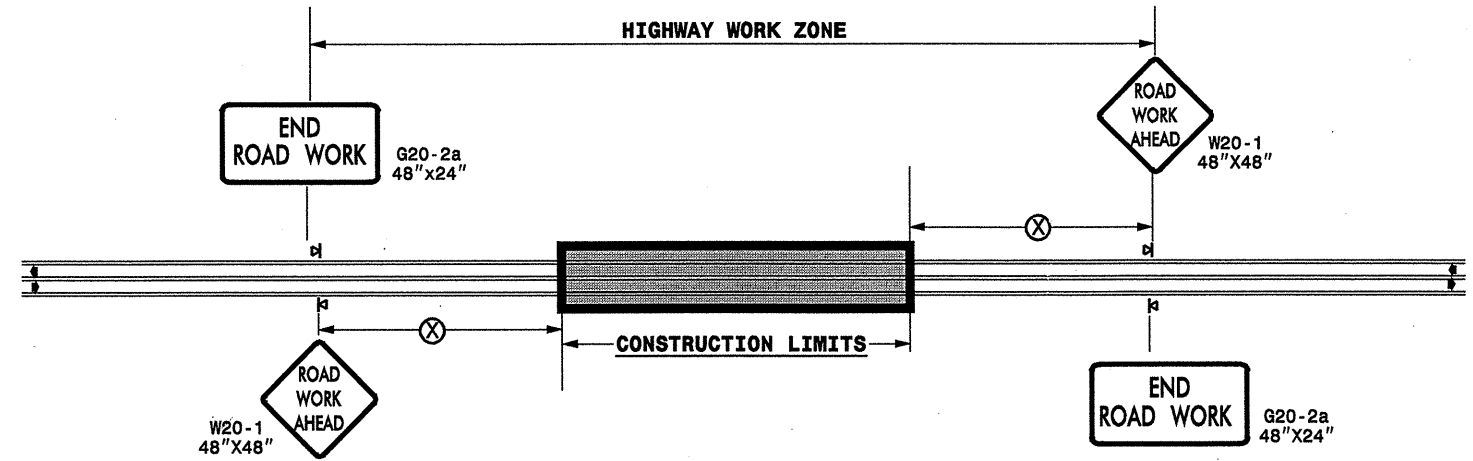


REVISIONS	

SUMMARY OF QUANTITIES

																		PROJECT NO.	SHEET NO.	TOTAL NO.		
																		10CR.10601.15, ETC	8			
PROJECT NO	COUNTY	MAP NO	ROUTE	DESCRIPTION	TYP	LENGTH MI	WIDTH FT	INCIDENTAL STONE BASE TONS	SHOULDER RECONSTRUCTION SMI	1 1/2" MILLING SY	0" TO 1.5" MILLING SY	INCIDENTAL MILLING SY	SURFACE COURSE, S9.5C TONS	LEVELING COURSE, S9.5C TONS	PG 70-22 PLANT MIX TONS	PATCHING EXISTING PAVEMENT TONS	ADJ. OF MANHOLES EA	ADJ. OF METER OR VALVE BOX EA	PORTABLE LIGHTING LS	TEMPORARY SILT FENCE LF	SEED & MULCHING AC	
10CR.10601.15	Mecklenburg	2	NC 115	FROM CORNELIUS CL TO MAYES RD. (SR 2433)	4, 5	1.18	30	41	2.3			340	1927	420	143	420	4	8		200	1.4	
TOTAL FOR PROJ NO. 10CR.10601.15						1.18		41	2.3			340	1927	420	143	420	4	8		200	1.4	
10CR.20601.43	Mecklenburg	3	SR 2459 (EASTFIELD RD)	FROM SR 2460 (ROCKY FORD CLUB RD) TO WALLACE POND	6	0.9	24	10	1.8			135	1123	325	89	325		1		200	0.7	
TOTAL FOR PROJ NO. 10CR.20601.43						0.9		10	1.8			135	1123	325	89	325		1		200	0.7	
10CR.20601.44	Mecklenburg	4	SR 2733 (JACKSON ST)	FROM DEPOT ST TO NC 115	8	0.24	24			3520			314		19	90						
TOTAL FOR PROJ NO. 10CR.20601.44						0.24		0	0	3520		0	314	0	19	90						
10CR.20601.45	Mecklenburg	5	SR 2140 (STUMPTOWN RD)	FROM NC 115 TO US 21	6	1	20.5	35	1.9			120	1067	350	87	350				300	0.8	
TOTAL FOR PROJ NO. 10CR.20601.45						1		35	1.9	0		120	1067	350	87	350				300	0.8	
10CR.20601.46	Mecklenburg	6	SR 3106 (BRIEF RD)	FROM SR 3110 (ARLINGTON CH RD) TO SR 3107 (INDIANTRAIL RD)	6	1.62	21.5	55	3.1			130	1726	570	141	570				300	1.2	
TOTAL FOR PROJ NO. 10CR.20601.46						1.62		55	3.1	0		130	1726	570	141	570				300	1.2	
10CR.20601.47	Mecklenburg	7	SR 3106 (BRIEF RD)	FROM UNION CO LINE TO SR 3107 (INDIANTRAIL RD)	6	0.91	21.5	30	1.8			65	1018	315	82	315				200	0.7	
TOTAL FOR PROJ NO. 10CR.20601.47						0.91		30	1.8	0		65	1018	315	82	315				200	0.7	
10CR.10601.16	Mecklenburg	8	US 29	FROM DALTON AVE TO ATANDO AVE	8, 9	1.26	60			35550			3733		224	200			*			
TOTAL FOR PROJ NO. 10CR.10601.16						1.26		0	0	35550		0	3733	0	224	200				*		
10CR.20601.48	Mecklenburg	9	SR 1009 (MONROE RD)	FROM MCALPINE CREEK TO THERMAL RD	8	1.13	60			39640			3516		211	200			*			
TOTAL FOR PROJ NO. 10CR.20601.48						1.13		0	0	39640		0	3516	0	211	200				*		
10CR.20601.49	Mecklenburg	10	SR 2803 (PLAZA RD EXT)	FROM PVT JOINT @ I-485 TO PLOTT RD	5, 6	3.29	24	110	6.6			300	4303	1150	333	1150			1	650	3.8	
TOTAL FOR PROJ NO. 10CR.20601.49						3.29		110	6.6	0		300	4303	1150	333	1150			1	650	3.8	
10CR.20601.50	Mecklenburg	11	SR 2025 (OAKDALE RD)	FROM WOODLAND CIRCLE TO THE PVT JOINT @ I-485	6	1.73	24	60	3.5			270	2057	605	163	605			1	500	1.3	
TOTAL FOR PROJ NO. 10CR.20601.50						1.73		60	3.5	0		270	2057	605	163	605			1	500	1.3	
10CR.20601.51	Mecklenburg	12	SR 2008 (PLEASANT GROVE RD)	FROM NC 16 TO THE PVT JOINT @ SR 2025 (OAKDALE RD)	6	1.74	21	60	3.5			135	1811	605	148	605				400	1.3	
TOTAL FOR PROJ NO. 10CR.20601.51						1.74		60	3.5	0		135	1811	605	148	605				400	1.3	
10CR.20601.52	Mecklenburg	13	SR 2158 (GRIFFITH ST)	FROM APPROX 330' WEST OF I-77 BRIDGE TO APPROX 400' EAST OF I-77 BRIDGE	11	0.2	32		0.4	1900			332		20	70			*		0.2	
TOTAL FOR PROJ NO. 10CR.20601.52						0.2		0	0.4	1900		0	332	0	20	70				*		0.2
10CR.20601.53	Mecklenburg	14	SR 1156 (YORKMONT RD)	FROM LOCHLAIN DR TO THE PVT JOINT 0.4 MILES EAST OF TYVOLA RD.	6, 10, 12	1.5	32		2.4		5325	300	2375	525	177	550	2	1		600	2.1	
TOTAL FOR PROJ NO. 10CR.20601.53						1.5		0	2.4	0	5325	300	2375	525	177	550	2	1		600	2.1	
10CR.10601.17	Mecklenburg	1	US 74 (WILKINSON BLVD)	FROM PVT JOINT @ I-485 TO SR 1641 (LITTLE ROCK RD)	1, 2, 3, 4, 7, 9, 12	1.2	72	20	1.8		4300	400	4478	250	285	450	3	1	*	400	1.5	
TOTAL FOR PROJ NO. 10CR.10601.17						1.2		20	1.8	0	4300	400	4478	250	285	450	3	1		400	1.5	
10CR.20601.54	Mecklenburg	15	SR 2004 (MT. HOLLY-HUNTERSVILLE RD)	FROM PVT. JT. 1400' E OF VANCE RD TO 1400' W OF ALEXANDERANA RD	6	0.25	30		0.13			120	390	90	29	100				100	0.3	
TOTAL FOR PROJ NO. 10CR.20601.54						0.25		0	0.13	0	0	120	390	90	29	100				100	0.3	
GRAND TOTAL						18.15		421	29.23	80610	9625	2315	30170	5205	2151	6000	9	13	1	3,850	15.3	

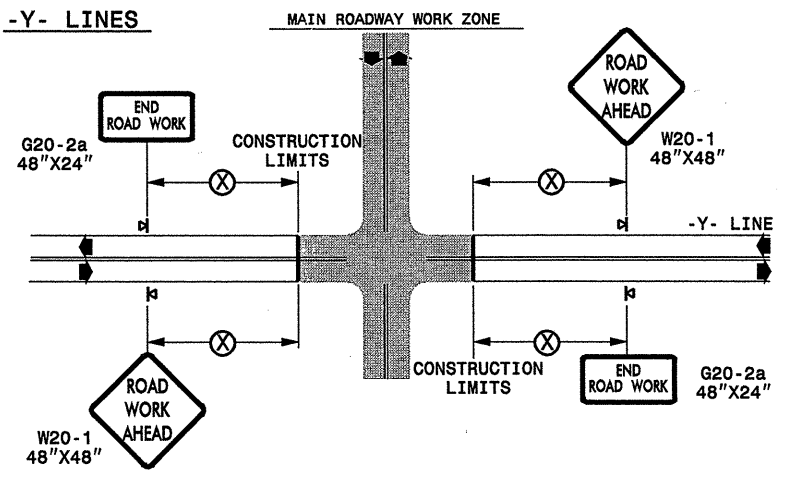
TWO-WAY UNDIVIDED ** (L-LINES)



POSTED SPEED LIMIT (M.P.H.)	RECOMMENDED MINIMUM SIGN SPACING
≤ 50	500'
≥ 55	1000'

STATE OF NORTH CAROLINA
DEPT. OF TRANSPORTATION
DIVISION OF HIGHWAYS
RALEIGH, N.C.

ROADWAYS INTERSECTING ALONG 2 WAY UNDIVIDED WORK ZONE (Y-LINES)



GENERAL NOTES

- USE FLUORESCENT ORANGE SHEETING (TYPE VII OR HIGHER) ON ALL ADVANCE WORK ZONE SIGNS.
- DO NOT INSTALL ADVANCE WARNING SIGNS MORE THAN 3 DAYS PRIOR TO BEGINNING OF WORK.
- ALL SIGN SPACING DIMENSIONS ARE APPROXIMATE, FIELD ADJUST AS NECESSARY OR AS DIRECTED.
- USE PORTABLE WORK ZONE SIGNS ONLY WITH PORTABLE WORK ZONE SIGN STANDS SPECIFICALLY DESIGNED FOR ONE ANOTHER. PORTABLE WORK ZONE SIGNS MAY BE ROLL UP OR APPROVED COMPOSITE.
- PROVIDE PORTABLE WORK ZONE SIGN STANDS, PORTABLE SIGNS AND SIGN SHEETING WHICH ARE LISTED ON THE NORTH CAROLINA DEPARTMENT OF TRANSPORTATION'S APPROVED PRODUCT LIST OR ACCEPTED AS TRAFFIC QUALIFIED BY THE TRAFFIC CONTROL UNIT.
- ** TWO-WAY UNDIVIDED ADVANCE WARNING SIGN CONFIGURATION MAY BE USED ON URBAN MULTI-LANE FACILITIES WHERE CONDITIONS LIMIT THE USE OF DUAL MOUNTED SIGNS AS DETERMINED BY THE ENGINEER.

LEGEND

◀ PORTABLE SIGN

➡ DIRECTION OF TRAFFIC FLOW

DETAIL DRAWING
FOR TWO-WAY UNDIVIDED
WORK ZONE WARNING SIGNS

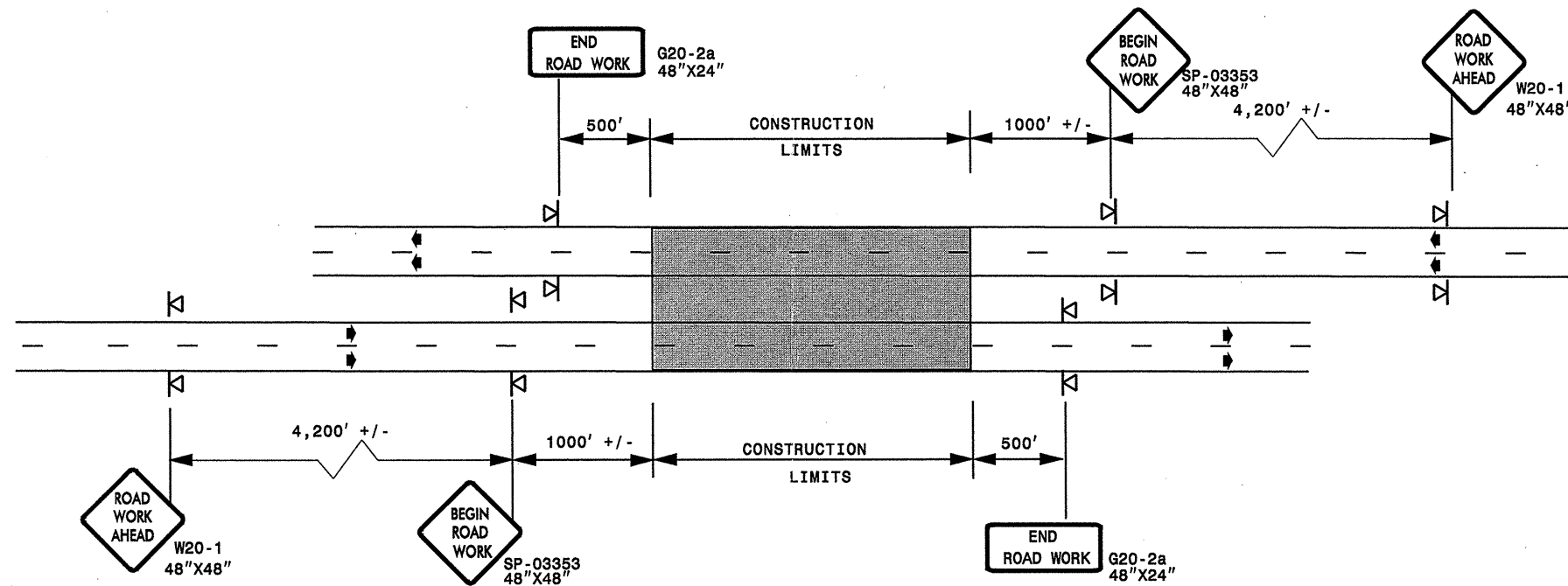
SHEET 1 OF 1

APPROVED: _____ DATE: _____	DETAIL DRAWING FOR TWO-WAY UNDIVIDED ADVANCED WORK ZONE WARNING SIGNS	SCALE: NONE DATE: _____ DWG. BY: _____ DESIGN BY: _____ REVIEWED BY: _____		REVISIONS 7-98 10/01 10-98 03/04 01/01 11/04
SEAL				CAD FILE

20-MAR-2008 10:49
 \\DOT\DESIGN\GROUPS-WZ\TCCC\design\group4\resurfacing\resurfacing2007\div0\c202057_10cr10601.5etc_mecklenburg.usl15etc\c202057_10cr10601.5etc_2wayundivurbfrwysjuly2006.dgn
 pseyemore AT WZTCC

ADVANCE WORK ZONE WARNING SIGNING FOR FREEWAYS (4 LANES OR GREATER)

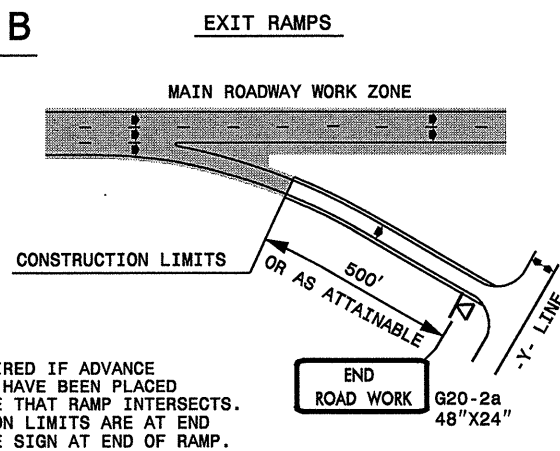
DETAIL A



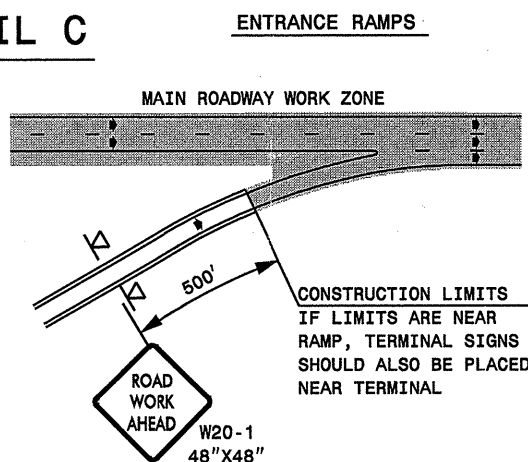
STATE OF NORTH CAROLINA
DEPT. OF TRANSPORTATION
DIVISION OF HIGHWAYS
RALEIGH, N.C.

ROADWAYS INTERSECTING ALONG FREEWAY WORK ZONE (Y-LINES)

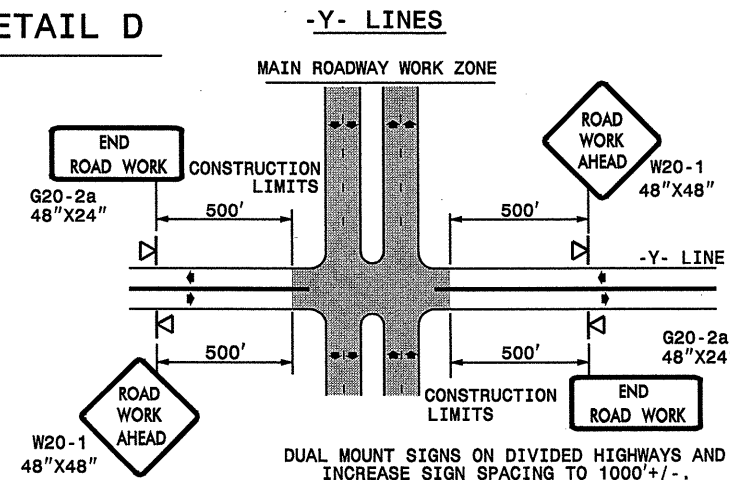
DETAIL B



DETAIL C



DETAIL D



DETAIL DRAWING
FOR FREEWAYS
WORK ZONE WARNING SIGNS
(SHORT-DURATION LANE CLOSURES)

GENERAL NOTES

- USE FLUORESCENT ORANGE SHEETING (TYPE VII OR HIGHER) ON ALL ADVANCE WORK ZONE SIGNS.
- DO NOT INSTALL ADVANCE WARNING SIGNS MORE THAN 3 DAYS PRIOR TO BEGINNING OF WORK.
- ALL SIGN SPACING DIMENSIONS ARE APPROXIMATE, FIELD ADJUST AS NECESSARY OR AS DIRECTED.
- USE PORTABLE WORK ZONE SIGNS ONLY WITH PORTABLE WORK ZONE SIGN STANDS SPECIFICALLY DESIGNED FOR ONE ANOTHER. PORTABLE WORK ZONE SIGNS MAY BE ROLL UP OR APPROVED COMPOSITE.
- PROVIDE PORTABLE WORK ZONE SIGN STANDS, PORTABLE SIGNS AND SIGN SHEETING WHICH ARE LISTED ON THE NORTH CAROLINA DEPARTMENT OF TRANSPORTATION'S APPROVED PRODUCT LIST OR ACCEPTED AS TRAFFIC QUALIFIED BY THE TRAFFIC CONTROL UNIT.
- ** TWO-WAY UNDIVIDED ADVANCE WARNING SIGN CONFIGURATION MAY BE USED ON MULTI-LANE FACILITIES WHERE CONDITIONS LIMIT THE USE OF DUAL MOUNTED SIGNS AS DETERMINED BY THE ENGINEER.

LEGEND

- ◁ PORTABLE SIGN
- ← DIRECTION OF TRAFFIC FLOW

SHEET 1 OF 1

APPROVED: _____ DATE: _____

SEAL

DETAIL DRAWING FOR FREEWAYS WORK ZONE WARNING SIGNS		REVISIONS	
SCALE: NONE		7-98	10/01
DATE:		10-98	03/04
DWG. BY:		01/01	11/04
DESIGN BY:			
REVIEWED BY:			

20-MAR-2008 10:51 \\DOT\DFS\ROOT\GROUPS\WZTCCC\design\resurfacing\resurfacing2007\div10\c202057\icr10601\5etc\mecklenburg_usl15etc\C202057\icr10601\5etc\free4lanesgreatJuly2006.dgn pseymore AT WZTC237502