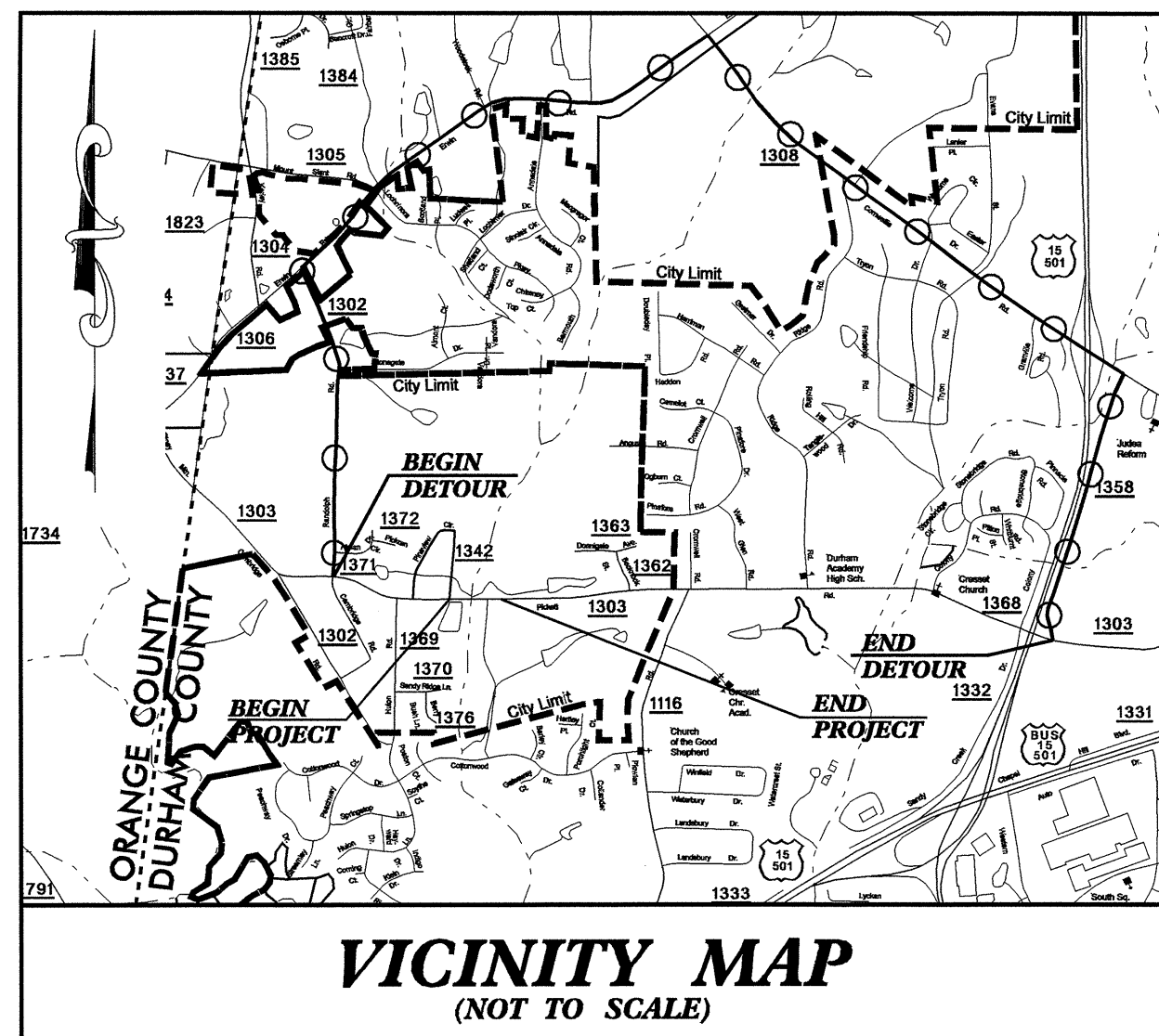


09/08/95

**TIP PROJECT: B-4109**

T.I.P. NO.	SHEET NO.
<b>B-4109</b>	<b>UC-1</b>



**VICINITY MAP**  
(NOT TO SCALE)

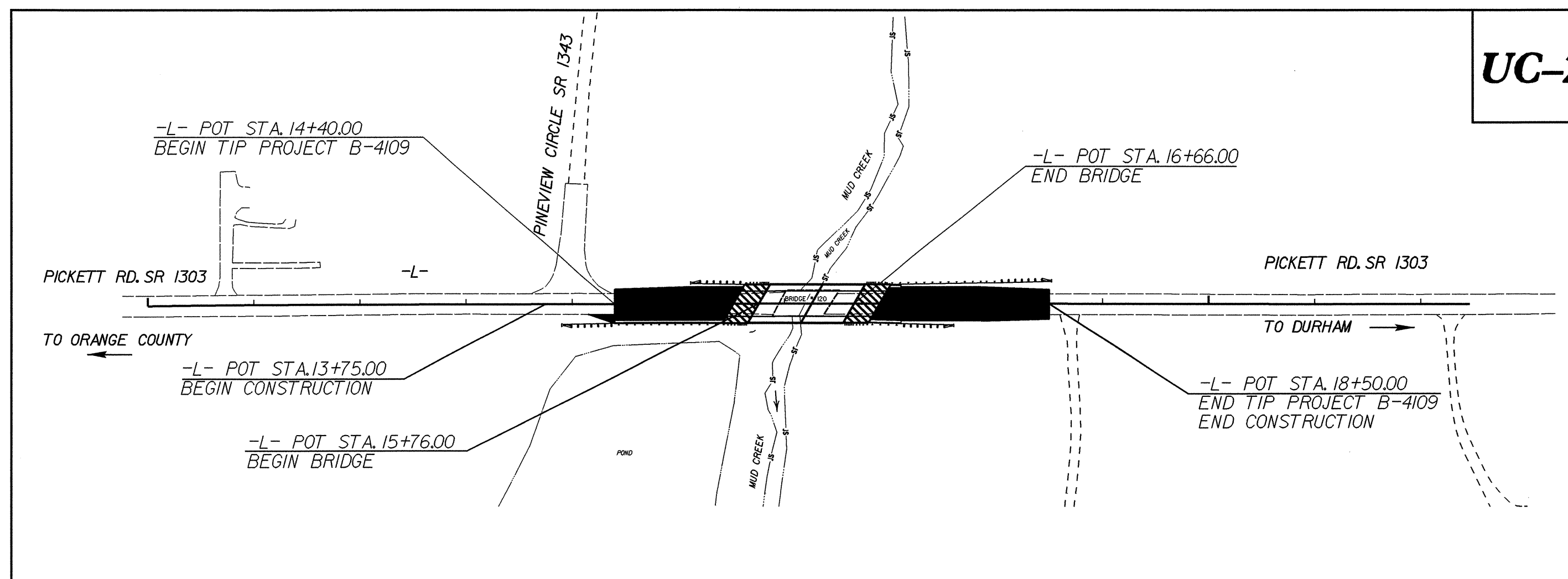
STATE OF NORTH CAROLINA  
DIVISION OF HIGHWAYS

# UTILITY CONSTRUCTION PLANS

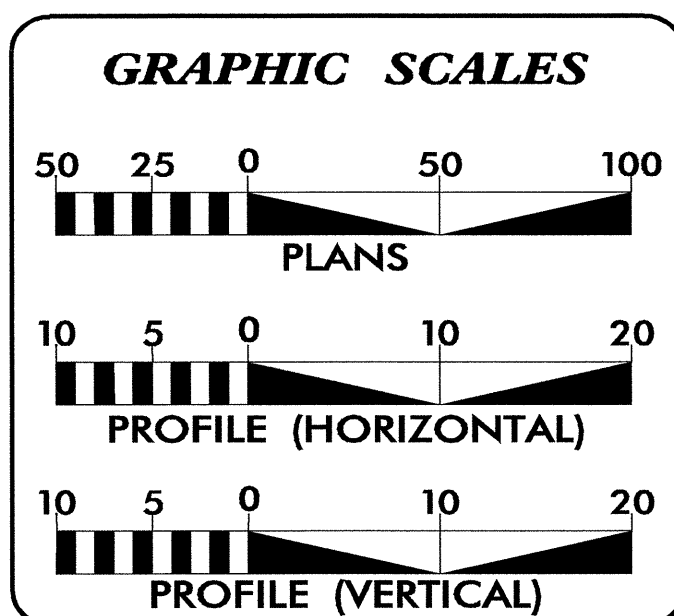
## DURHAM COUNTY

**LOCATION: BRIDGE NO. 120 OVER MUD CREEK AND APPROACHES  
ON SR 1303 (PICKETT ROAD)**

**TYPE OF WORK: WATER AND SEWER RELOCATION**



**UC-2**



**INDEX OF SHEETS**

SHEET NO.	DESCRIPTION
UC-1	TITLE SHEET
UC-2	UTILITY CONSTRUCTION PLAN SHEET
UC-3 TO UC-7	PROFILE SHEET(S)
UC-8 TO UC-9	DETAIL SHEET(S)

**WATER AND SEWER OWNERS ON PROJECT**

(1) CITY OF DURHAM



PREPARED IN THE OFFICE OF:  
**DIVISION OF HIGHWAYS**  
PROJECT SERVICES  
UTILITY SECTION

1591 MAIL SERVICES CENTER  
RALEIGH NC 27699-1591  
PHONE (919) 250-4128  
FAX (919) 250-4119

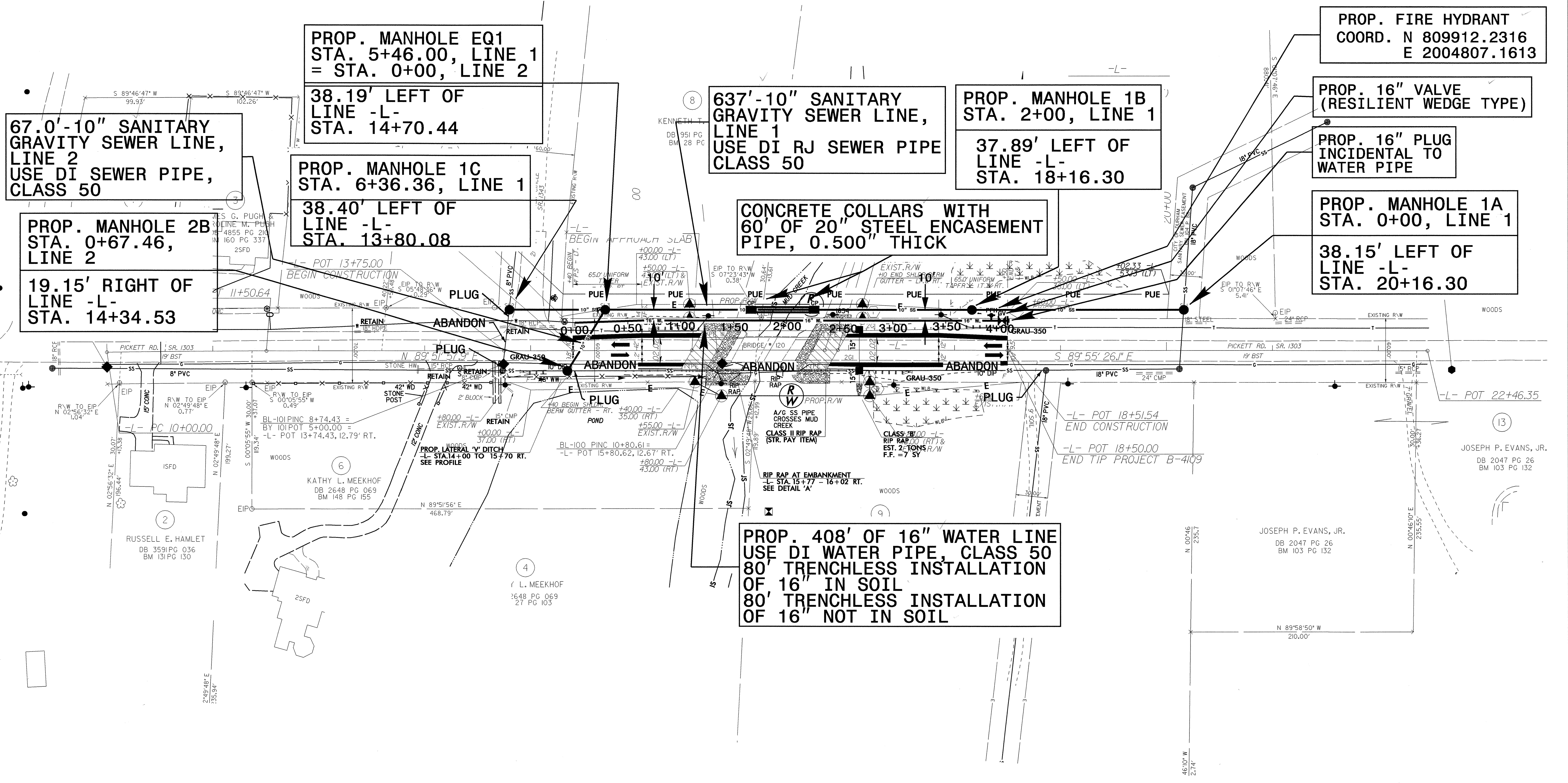
**Roger Worthington, P.E.** UTILITIES SECTION ENGINEER  
**Corey Bousquet, P.E.** UTILITIES SQUAD LEADER PROJECT ENGINEER  
**Stephanie Athey** UTILITIES PROJECT DESIGNER

5/14/99

PROJECT REFERENCE NO.	SHEET NO.
B-4109	UC-2
DESIGNED BY: CDB	
DRAWN BY: CDB	
CHECKED BY: CDB	
APPROVED BY: CDB	
REVISED:	
NORTH CAROLINA DEPARTMENT OF TRANSPORTATION	
PROJECT SERVICES UNIT PHONE: (919) 250-4128 FAX: (919) 250-4119	
UTILITY CONSTRUCTION PLANS ONLY	

### UTILITY CONSTRUCTION

ALL WATER AND SEWER LINES ARE OWNED BY THE CITY OF DURHAM



67.0'-10" SANITARY GRAVITY SEWER LINE, LINE 2  
USE DI SEWER PIPE, CLASS 50

PROP. MANHOLE EQ1  
STA. 5+46.00, LINE 1  
= STA. 0+00, LINE 2

38.19' LEFT OF LINE -L-  
STA. 14+70.44

PROP. MANHOLE 1C  
STA. 6+36.36, LINE 1

38.40' LEFT OF LINE -L-  
STA. 13+80.08

PROP. MANHOLE 2B  
STA. 0+67.46, LINE 2

19.15' RIGHT OF LINE -L-  
STA. 14+34.53

637'-10" SANITARY GRAVITY SEWER LINE, LINE 1  
USE DI RJ SEWER PIPE CLASS 50

PROP. MANHOLE 1B  
STA. 2+00, LINE 1

37.89' LEFT OF LINE -L-  
STA. 18+16.30

CONCRETE COLLARS WITH 60' OF 20" STEEL ENCASEMENT PIPE, 0.500" THICK

PROP. FIRE HYDRANT  
COORD. N 809912.2316  
E 2004807.1613

PROP. 16" VALVE (RESILIENT WEDGE TYPE)

PROP. 16" PLUG INCIDENTAL TO WATER PIPE

PROP. MANHOLE 1A  
STA. 0+00, LINE 1

38.15' LEFT OF LINE -L-  
STA. 20+16.30

PROP. 408' OF 16" WATER LINE  
USE DI WATER PIPE, CLASS 50  
80' TRENCHLESS INSTALLATION OF 16" IN SOIL  
80' TRENCHLESS INSTALLATION OF 16" NOT IN SOIL

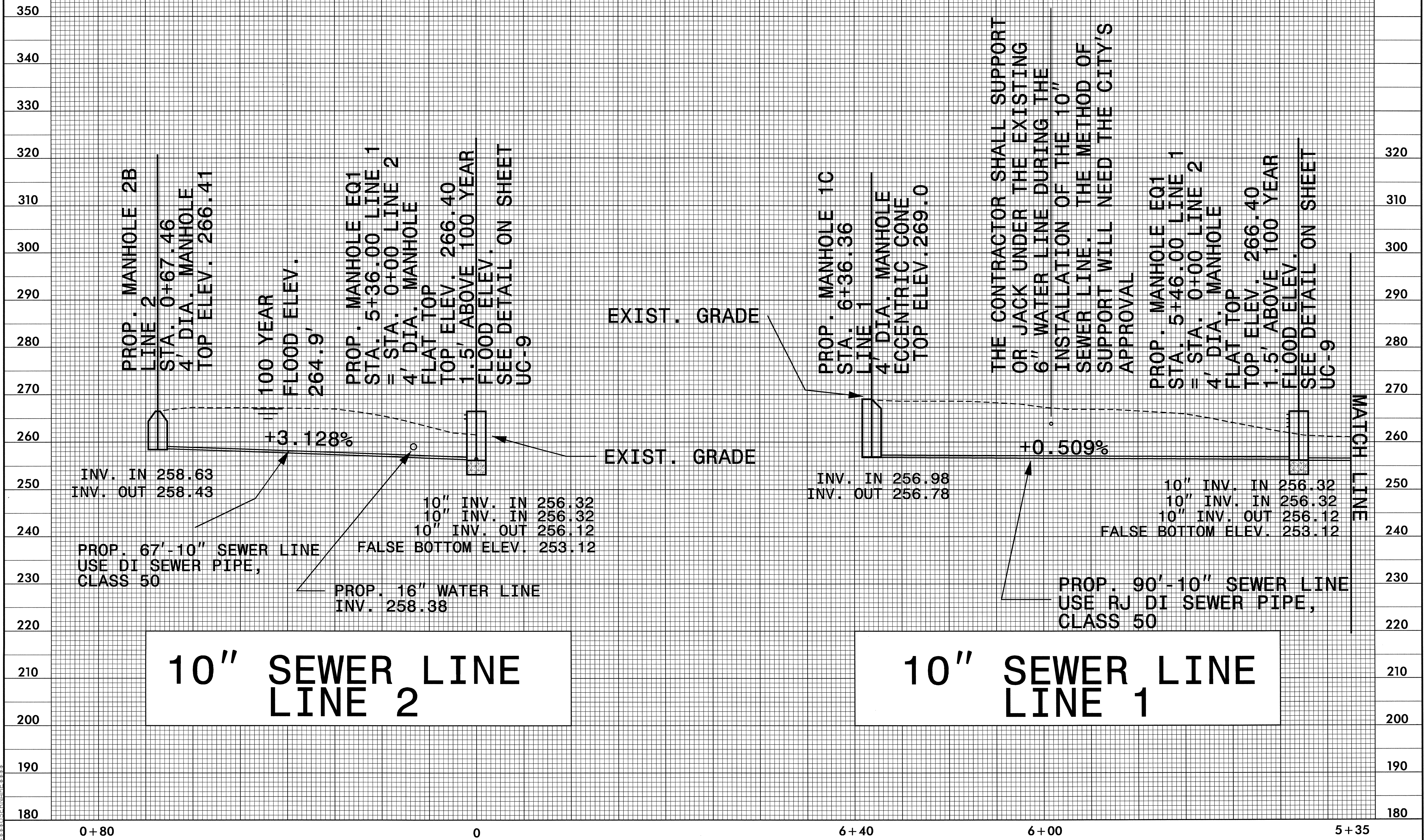
12-FIB-2008\_07:36 pro-n\4109\_ut-uc2.dgn



5/14/99

PROJECT REFERENCE NO.	SHEET NO.
B-4109	UC-3
DESIGNED BY: SBA	
DRAWN BY: SBA	
CHECKED BY: CDB	
APPROVED BY: CDB	
REVISED:	
NORTH CAROLINA DEPARTMENT OF TRANSPORTATION	
PROJECT SERVICES UNIT PHONE: (919) 250-4128 FAX: (919) 250-4119	
UTILITY CONSTRUCTION PLANS ONLY	

UTILITY CONSTRUCTION



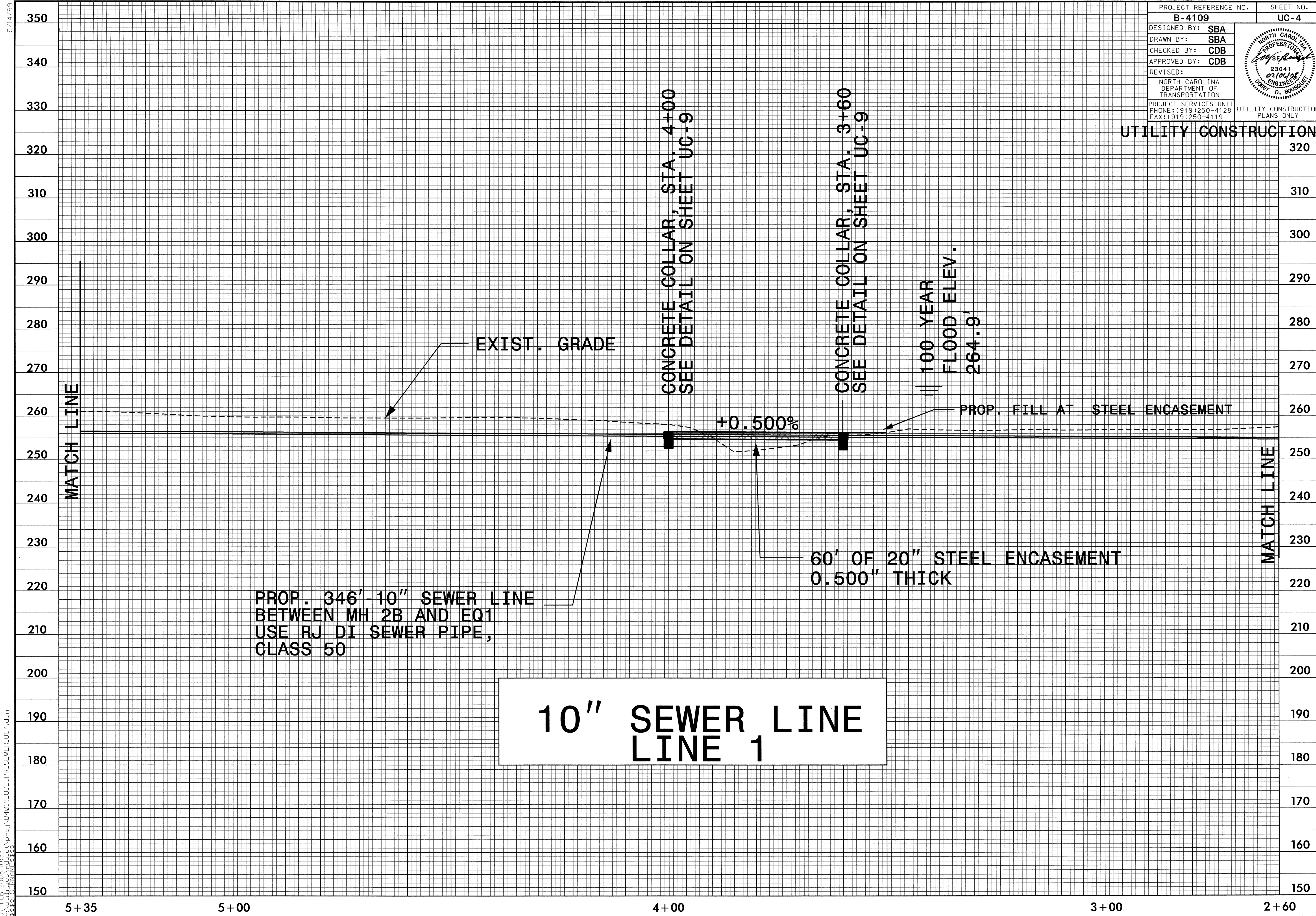
C:\FEB-2008 10:33 AM\proj\B4019\_UC\_UPR\_SEWER\_UC3.dgn



5/14/99

PROJECT REFERENCE NO. <b>B-4109</b>	SHEET NO. <b>UC-4</b>
DESIGNED BY: <b>SBA</b>	
DRAWN BY: <b>SBA</b>	
CHECKED BY: <b>CDB</b>	
APPROVED BY: <b>CDB</b>	
REVISED:	
NORTH CAROLINA DEPARTMENT OF TRANSPORTATION	
PROJECT SERVICES UNIT PHONE: (919) 250-4128 FAX: (919) 250-4119	

**UTILITY CONSTRUCTION**



EXIST. GRADE

CONCRETE COLLAR, STA. 4+00  
SEE DETAIL ON SHEET UC-9

CONCRETE COLLAR, STA. 3+60  
SEE DETAIL ON SHEET UC-9

100 YEAR  
FLOOD ELEV.  
264.9'

+0.500%

PROP. FILL AT STEEL ENCASEMENT

60' OF 20" STEEL ENCASEMENT  
0.500" THICK

PROP. 346'-10" SEWER LINE  
BETWEEN MH 2B AND EQ1  
USE RJ DI SEWER PIPE,  
CLASS 50

**10" SEWER LINE  
LINE 1**

5+35                      5+00    4+00    3+00    2+60

07-FEB-2008 10:33 AM \\proj\B4019\_UC\_UPR\_SEWER\_UC4.dgn











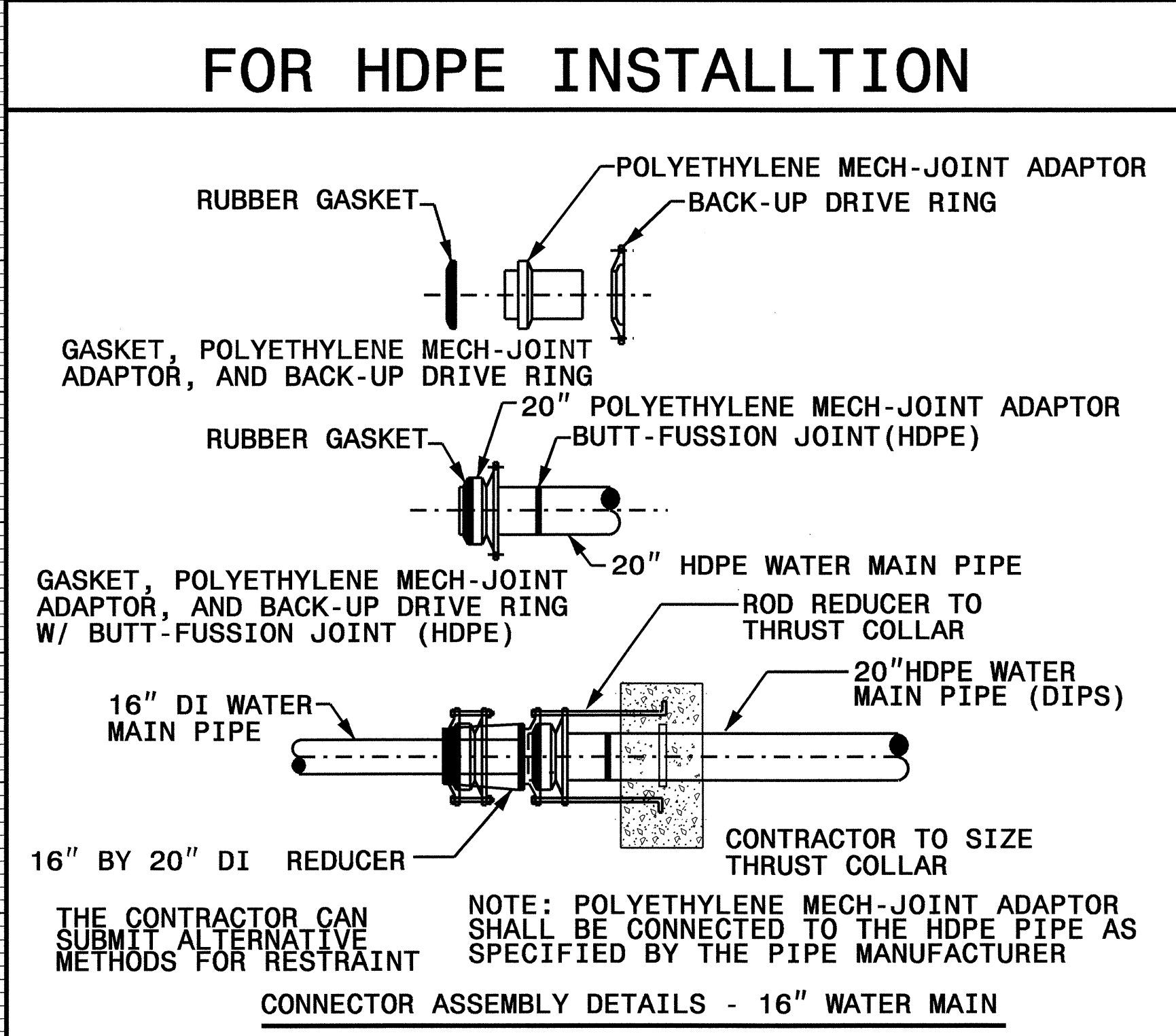
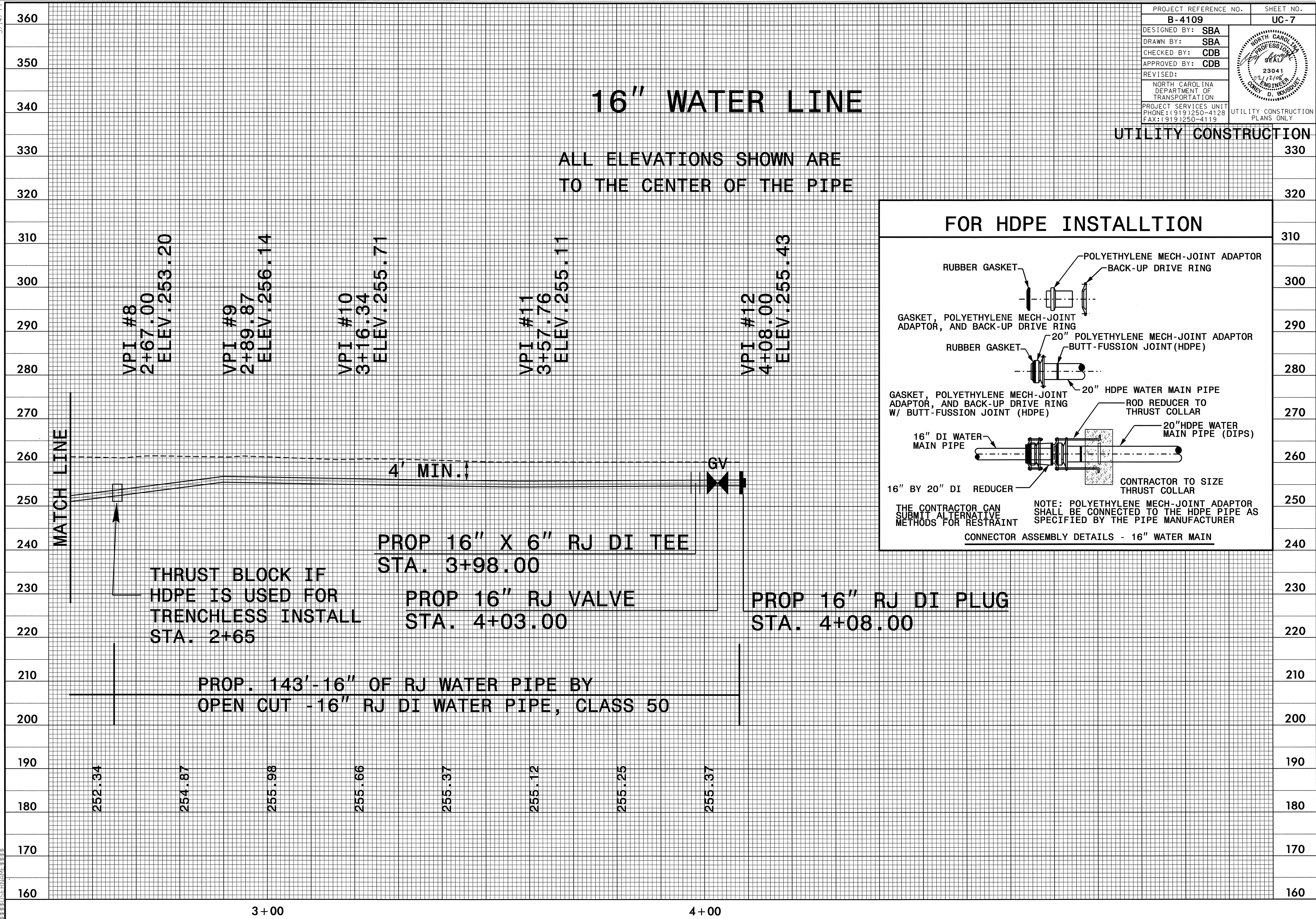
5/14/99  
 I2-FEB-2008 07:35  
 S:\PROJECTS\B4019\_UC\_LPR\_WATER-UC7.dgn

PROJECT REFERENCE NO.	SHEET NO.
B-4109	UC-7
DESIGNED BY: SBA	
DRAWN BY: SBA	
CHECKED BY: CDB	
APPROVED BY: CDB	
REVISED:	
NORTH CAROLINA DEPARTMENT OF TRANSPORTATION	
PROJECT SERVICES UNIT PHONE: (919) 250-4128 FAX: (919) 250-4119	
UTILITY CONSTRUCTION PLANS ONLY	

# 16" WATER LINE

ALL ELEVATIONS SHOWN ARE TO THE CENTER OF THE PIPE

UTILITY CONSTRUCTION



MATCH LINE

THRUST BLOCK IF HDPE IS USED FOR TRENCHLESS INSTALL STA. 2+65

PROP 16" X 6" RJ DI TEE STA. 3+98.00

PROP 16" RJ VALVE STA. 4+03.00

PROP 16" RJ DI PLUG STA. 4+08.00

PROP. 143'-16" OF RJ WATER PIPE BY OPEN CUT -16" RJ DI WATER PIPE, CLASS 50

4' MIN. ↓

GV

252.34

254.87

255.98

255.66

255.37

255.12

255.25

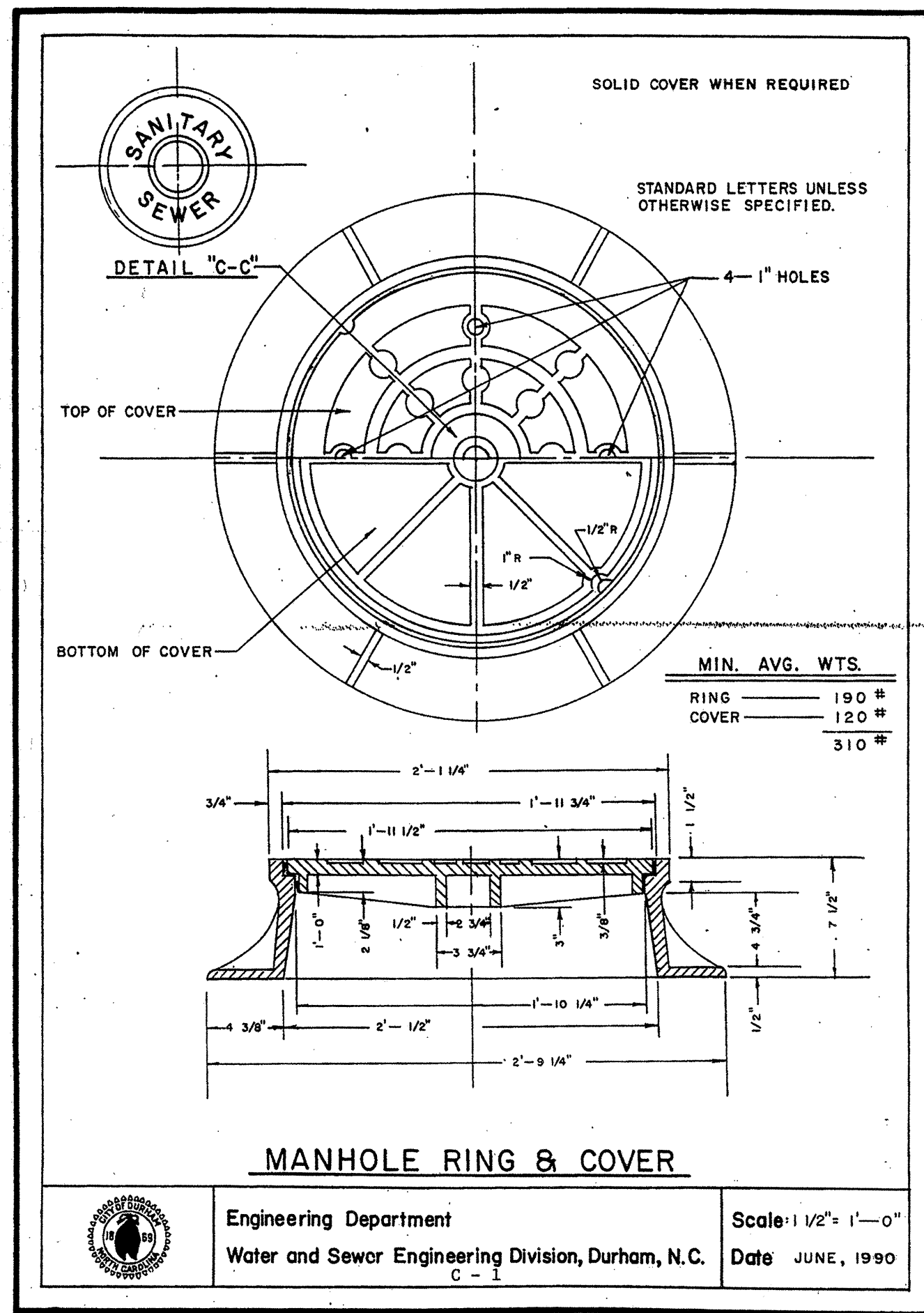
255.37

3+00

4+00

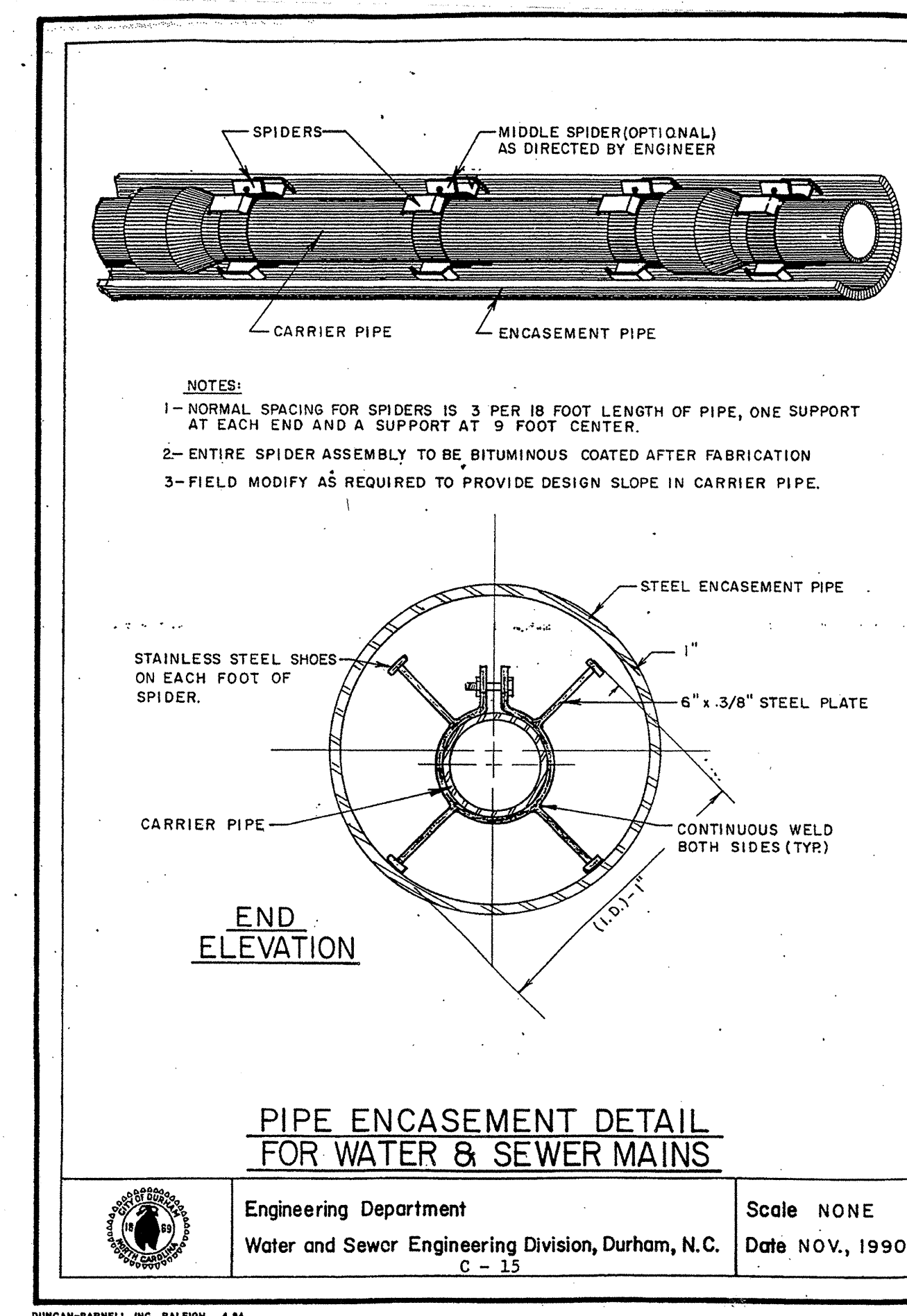
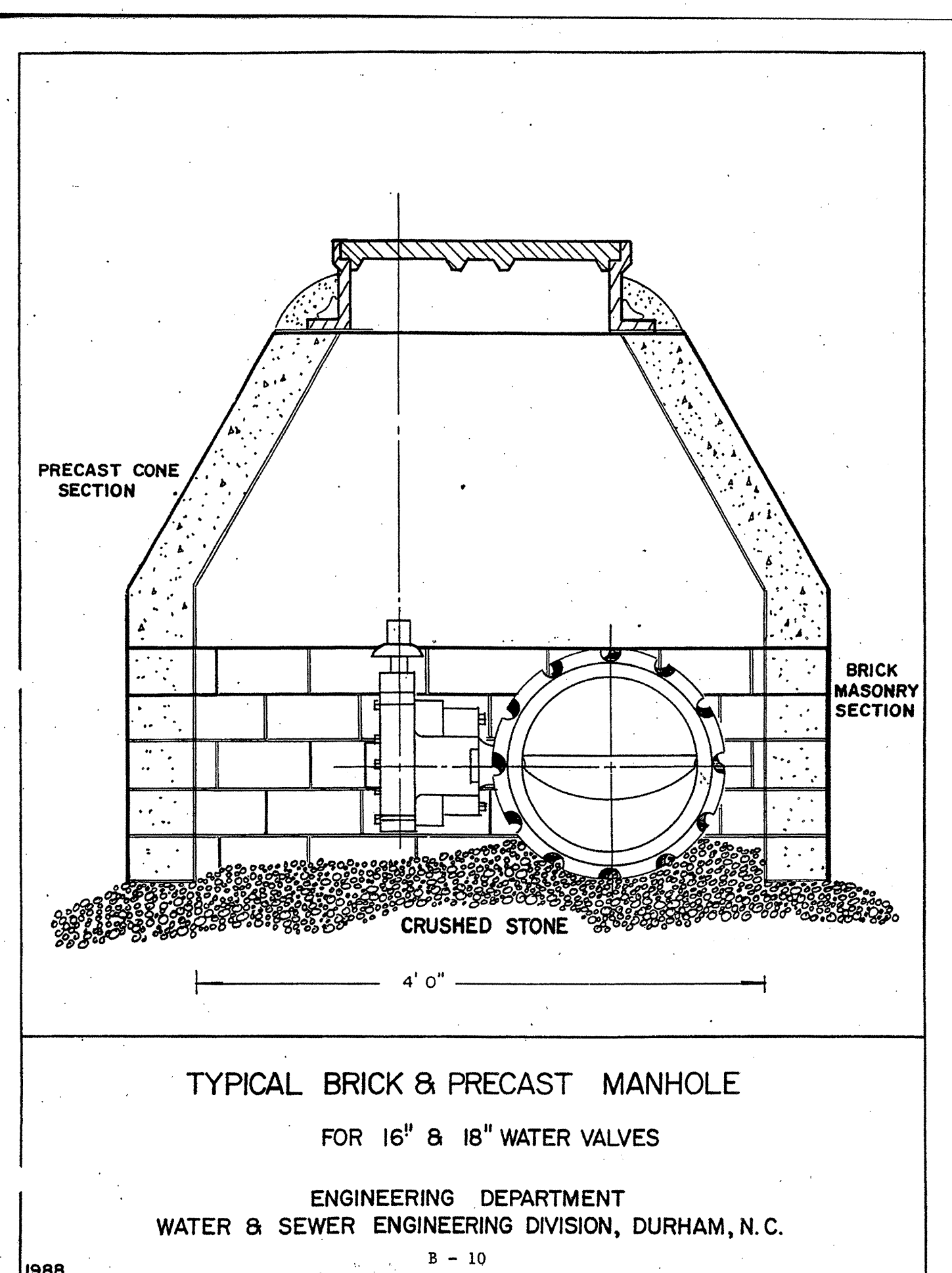
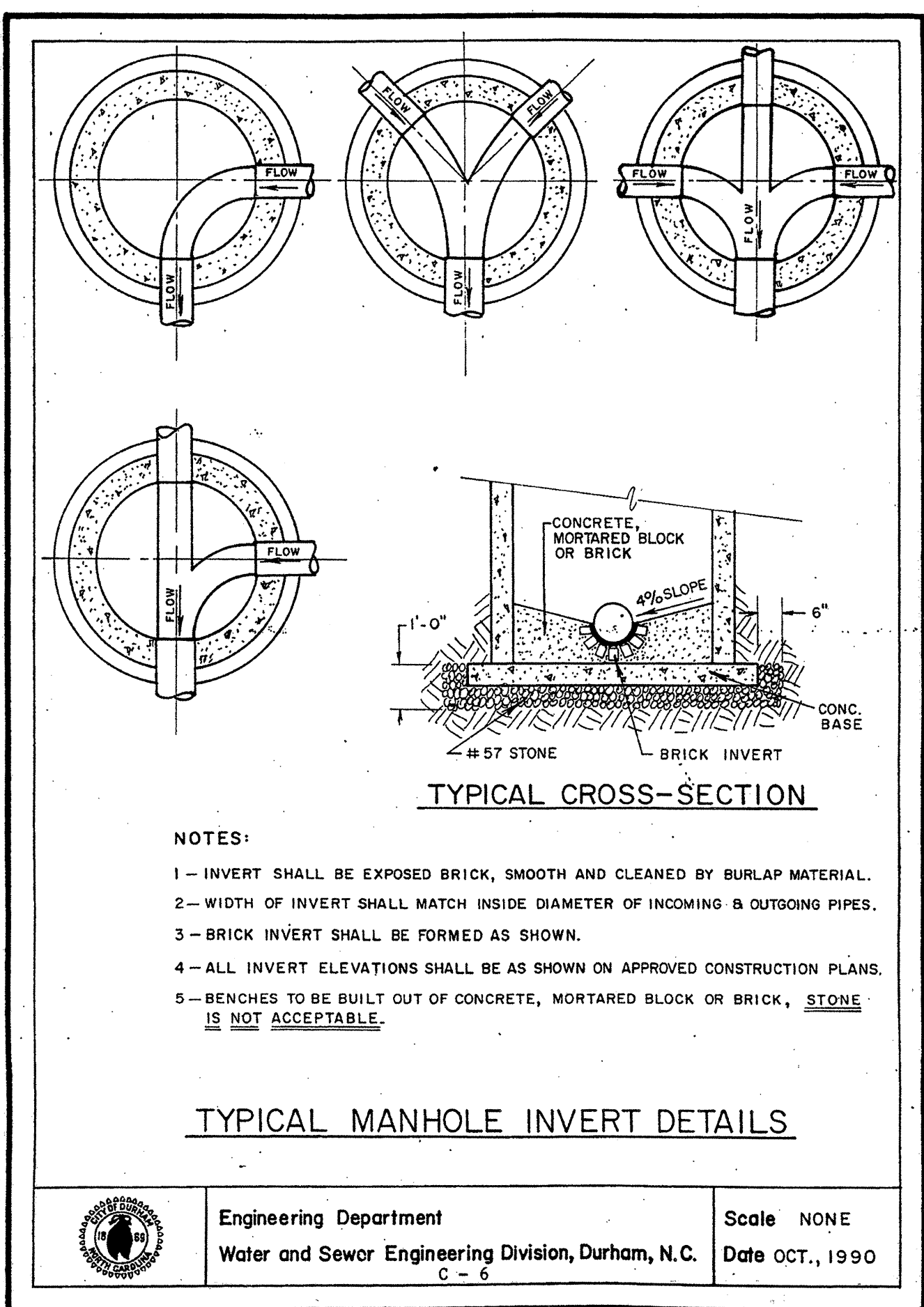
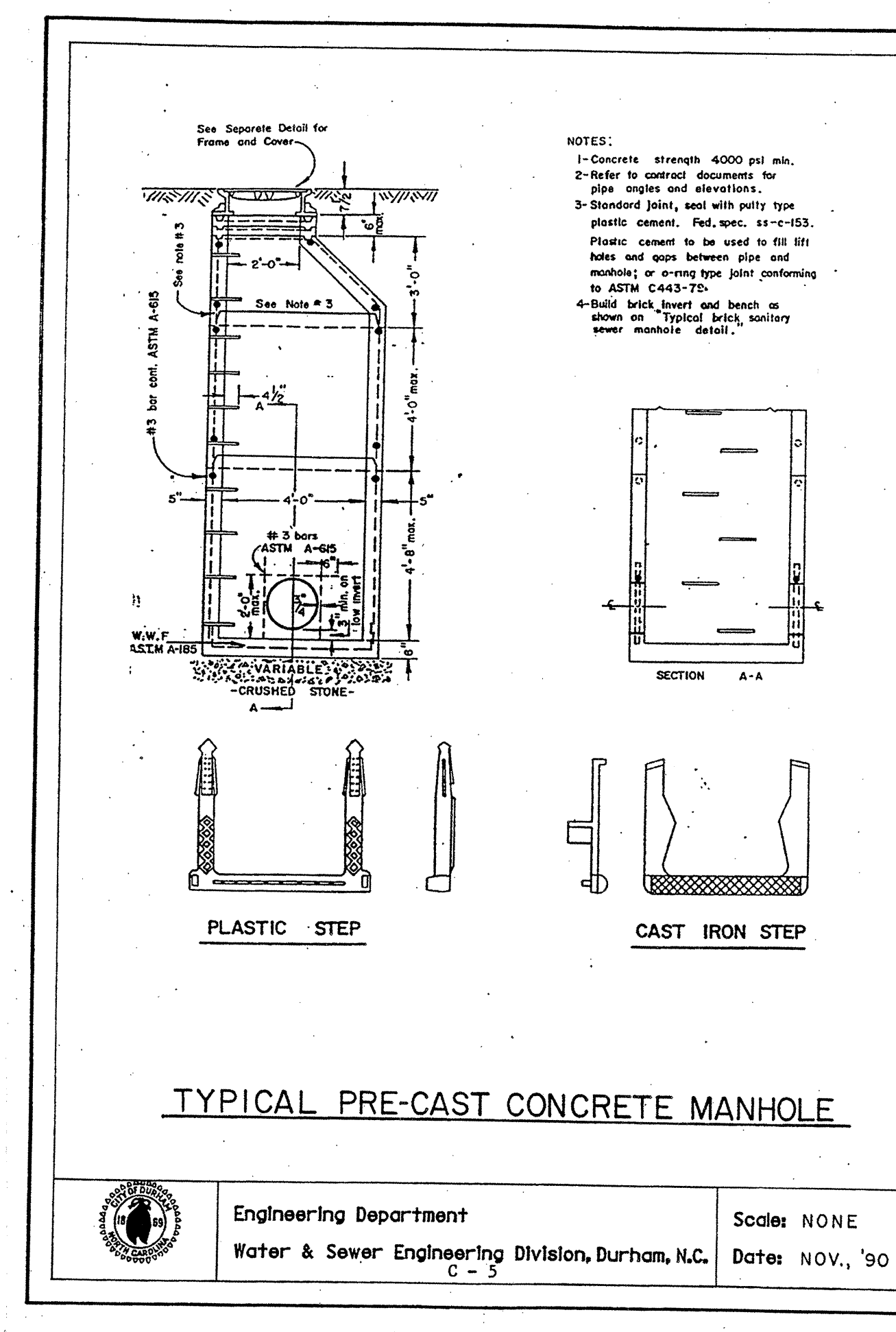
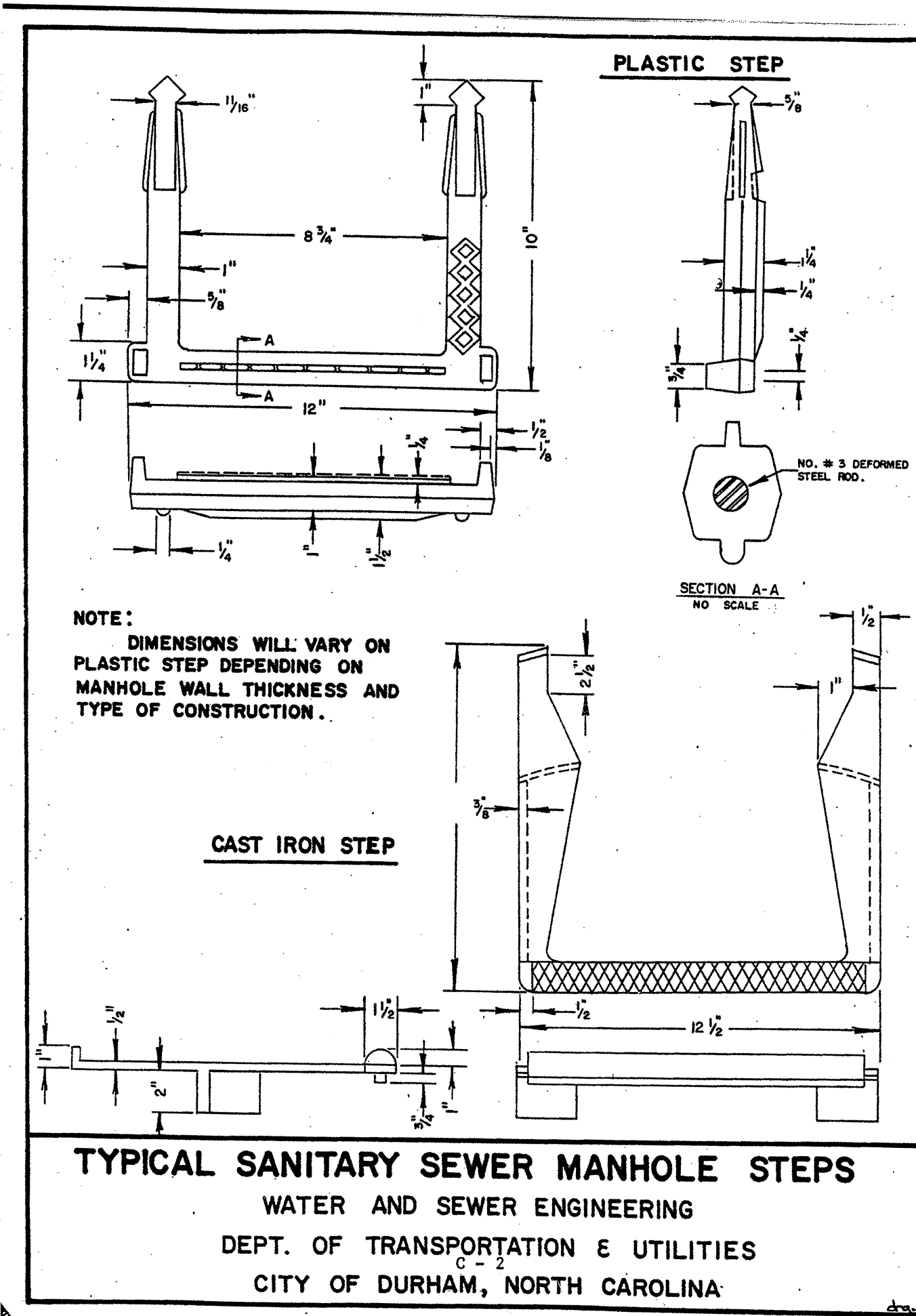


5/14/90



Engineering Department  
Water and Sewer Engineering Division, Durham, N.C.

Scale: 1/2" = 1'-0"  
Date: JUNE, 1990



PROJECT REFERENCE NO. **B-4109** SHEET NO. **UC-8**

DESIGNED BY: **CDB**  
DRAWN BY: **CDB**  
CHECKED BY: **CDB**  
APPROVED BY: **CDB**  
REVISED:

NORTH CAROLINA DEPARTMENT OF TRANSPORTATION  
PROJECT SERVICES UNIT  
PHONE: (919) 250-4128  
FAX: (919) 250-4119

UTILITY CONSTRUCTION PLANS ONLY

23041  
0-166108  
ENGINEER  
D. BOUSQUET

**UTILITY CONSTRUCTION**

04-FEB-2008 07:23  
F:\Utilities\Projects\4020.ut\4020.ut.dwg





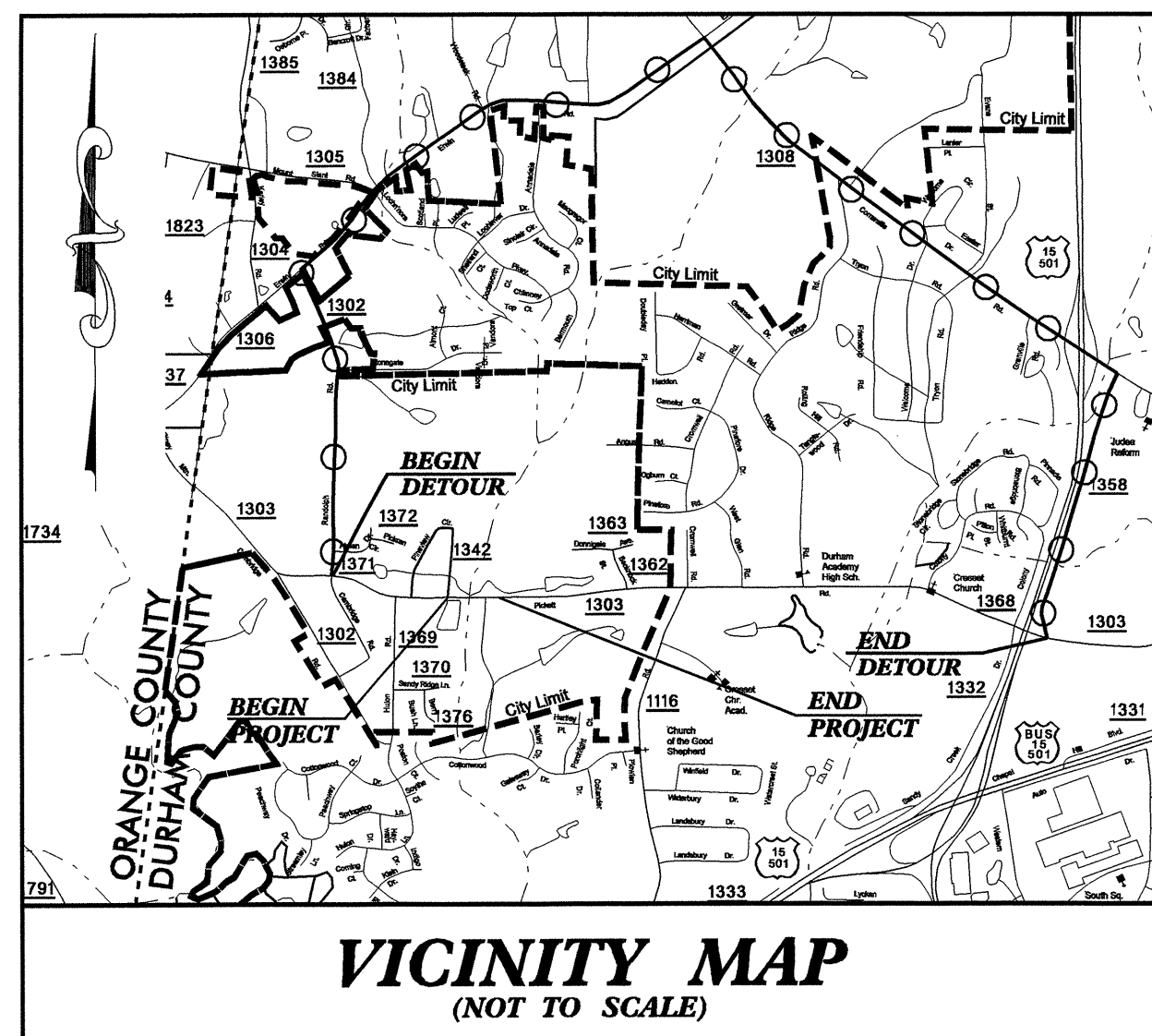


05/780/50

See Sheet 1-A For Index of Sheets  
See Sheet 1-B For Conventional Symbols

T.I.P. NO.	SHEET NO.
B-4109	UO-1

**TIP PROJECT: B-4109**

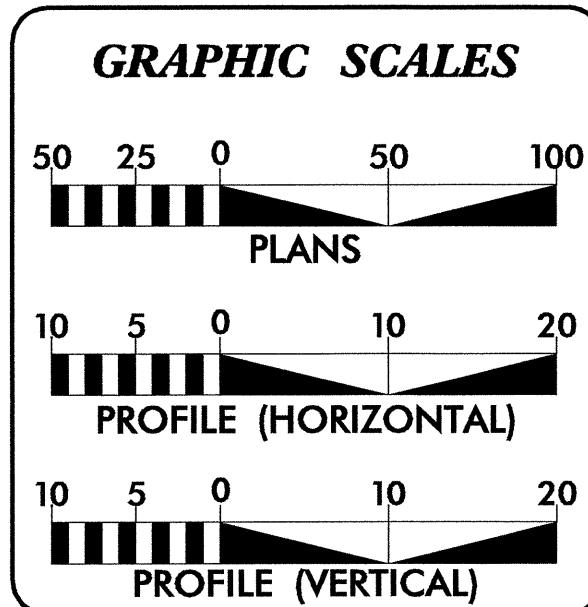
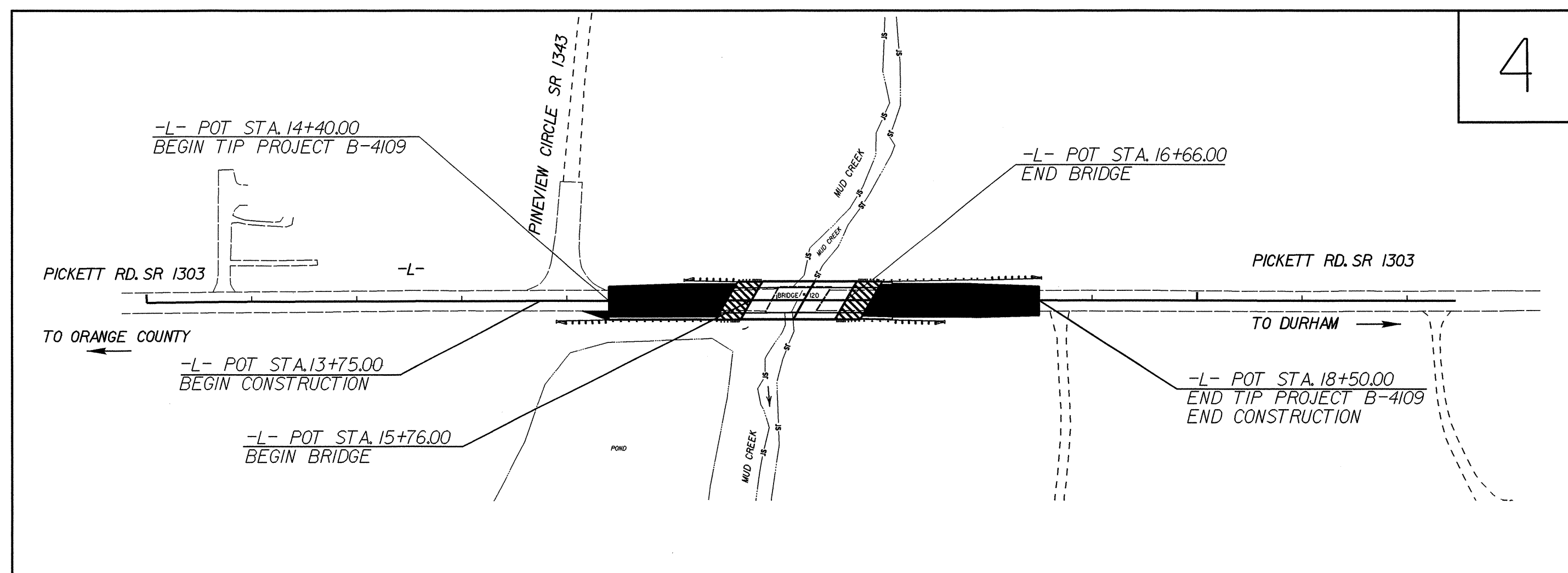


STATE OF NORTH CAROLINA  
DIVISION OF HIGHWAYS

**UTILITY BY OTHERS PLANS**  
**DURHAM COUNTY**

**LOCATION: BRIDGE NO. 103 OVER RUNYON CREEK**

**TYPE OF WORK: UTILITY RELOCATION**

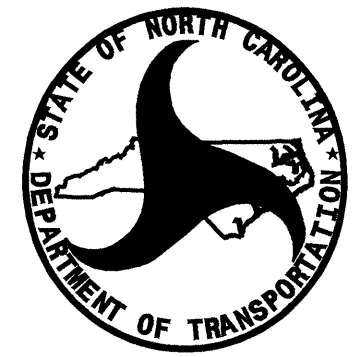


**INDEX OF SHEETS**

SHEET NO.	DESCRIPTION
UO-1	TITLE SHEET
UO-2	UTILITY BY OTHERS PLAN SHEETS

**UTILITY OWNERS ON PROJECT**

- DUKE ENERGY
- PSNC GAS
- TIME WARNER CABLE
- VERIZON



PREPARED IN THE OFFICE OF:  
**DIVISION OF HIGHWAYS**  
**DESIGN SERVICES**  
**UTILITY SECTION**

1591 MAIL SERVICES CENTER  
RALEIGH NC 27699-1591  
PHONE (919) 250-4128  
FAX (919) 250-4119

**Roger Worthington, P.E.** UTILITIES SECTION ENGINEER  
**Corey Bousquet, P.E.** UTILITIES SQUAD LEADER PROJECT ENGINEER  
**Stephanie Athey** UTILITIES PROJECT DESIGNER



