

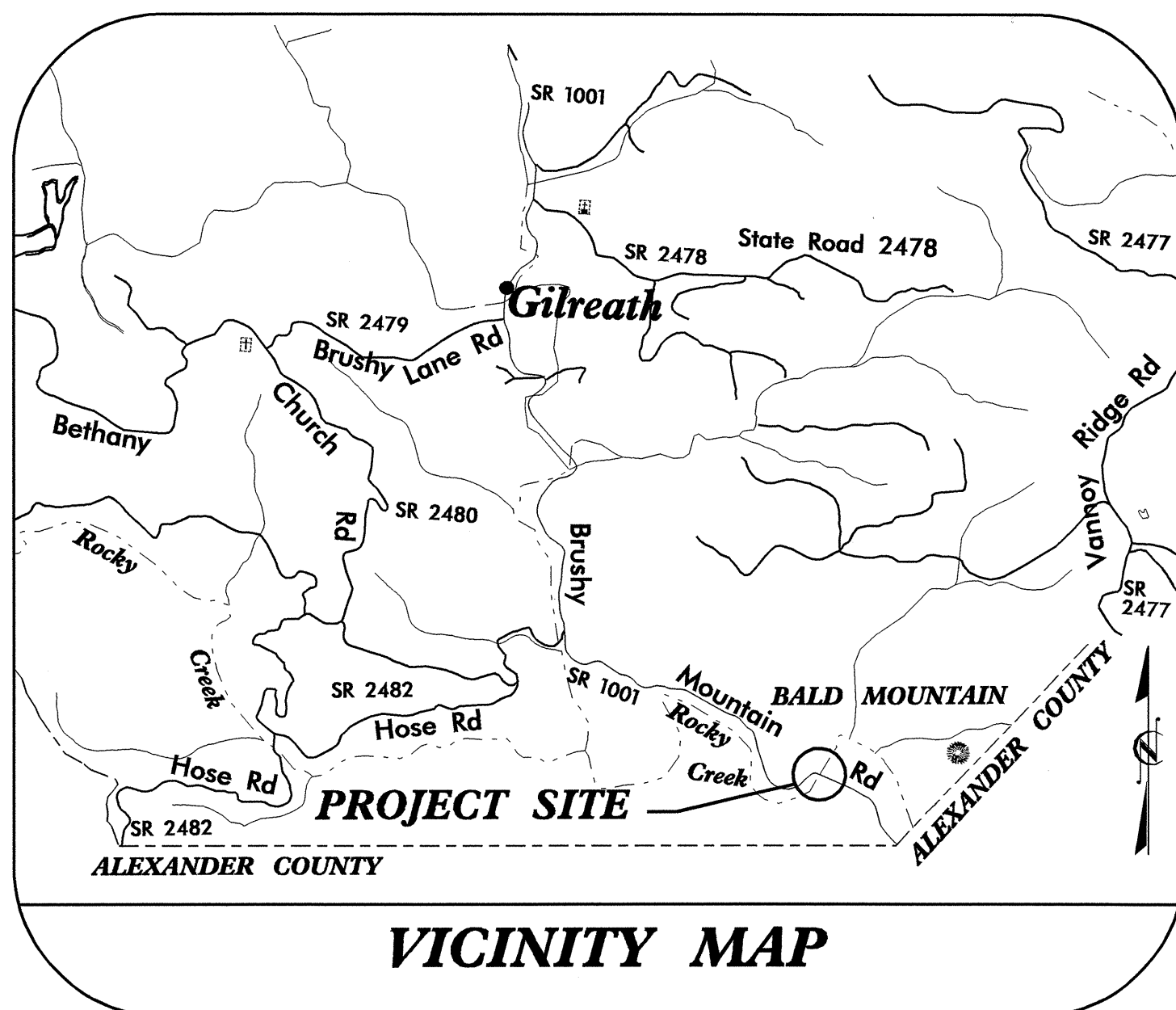
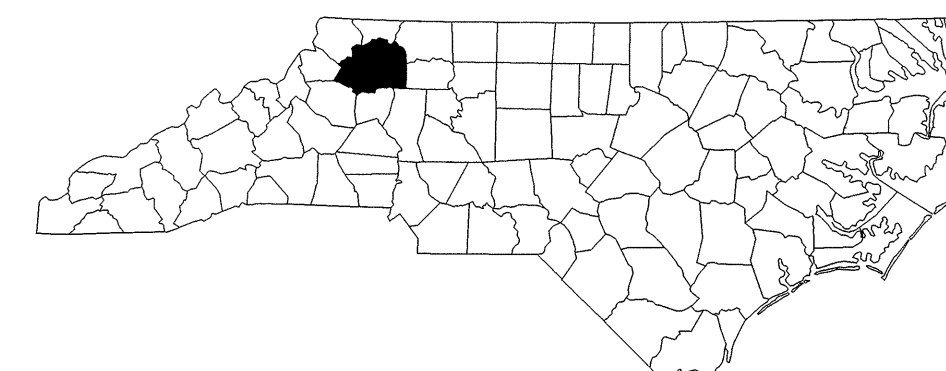
09/08/199

TIP PROJECT: B-4675

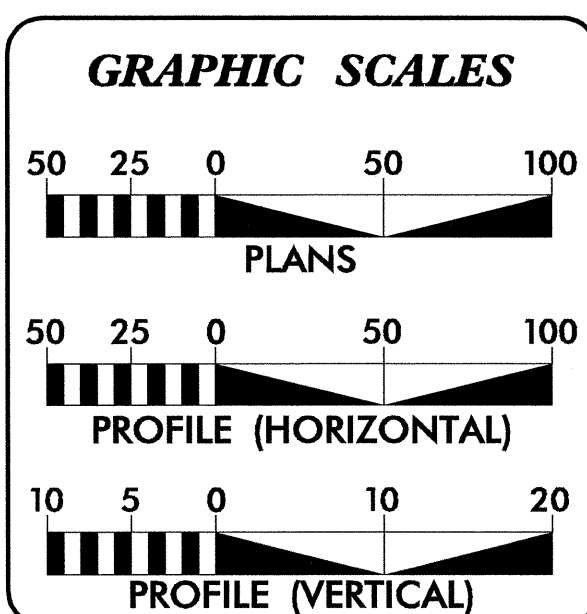
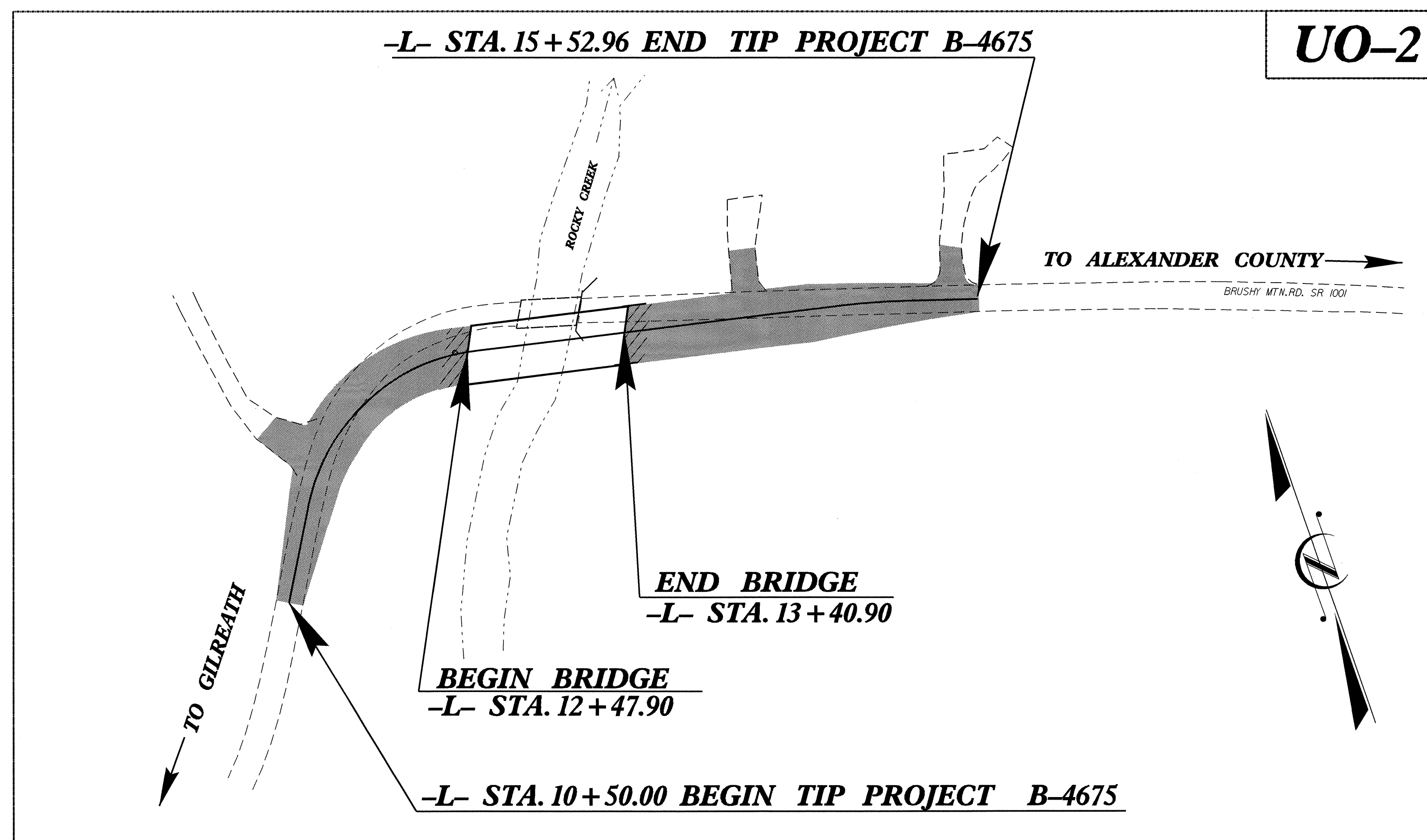
T.I.P. NO.	SHEET NO.
B-4675	UO-1

STATE OF NORTH CAROLINA
DIVISION OF HIGHWAYS

UTILITY BY OTHERS PLANS
WILKES COUNTY



LOCATION: BRIDGE NO. 34 OVER ROCKY CREEK AND APPROACHES ON SR 1001 (BRUSHY MOUNTAIN RD)
TYPE OF WORK: UTILITY RELOCATION



INDEX OF SHEETS	
SHEET NO.	DESCRIPTION
UO-1	TITLE SHEET
UO-2	UTILITY BY OTHERS PLAN SHEET

UTILITY OWNERS ON PROJECT
(1) Wilkes Telephone (Telephone)

PREPARED IN THE OFFICE OF:
**DIVISION OF HIGHWAYS
DESIGN SERVICES
UTILITY SECTION**

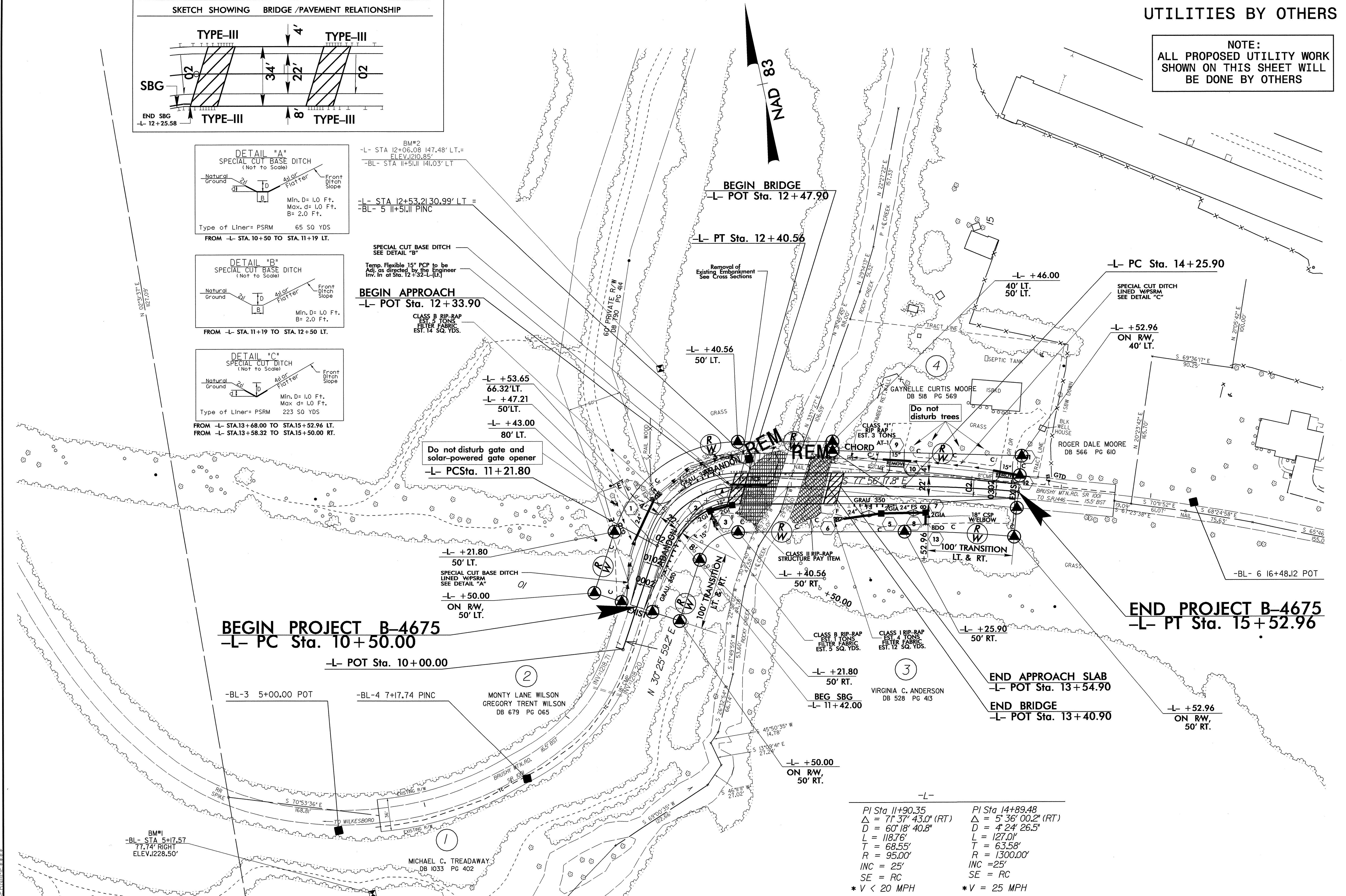
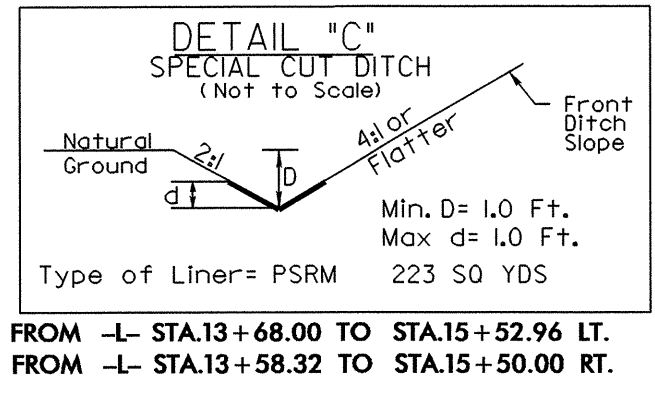
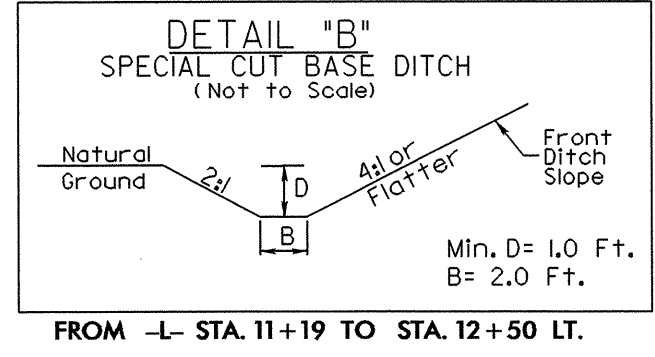
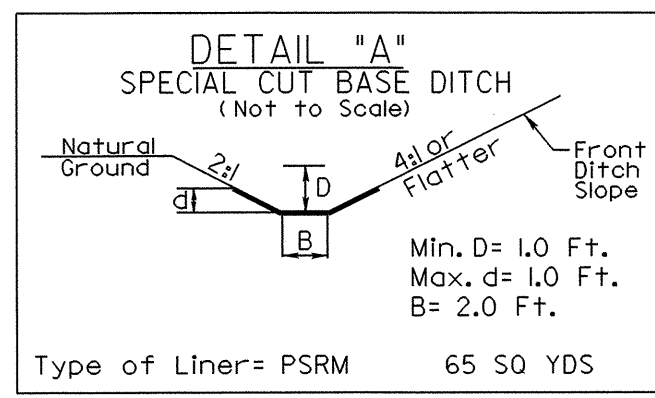
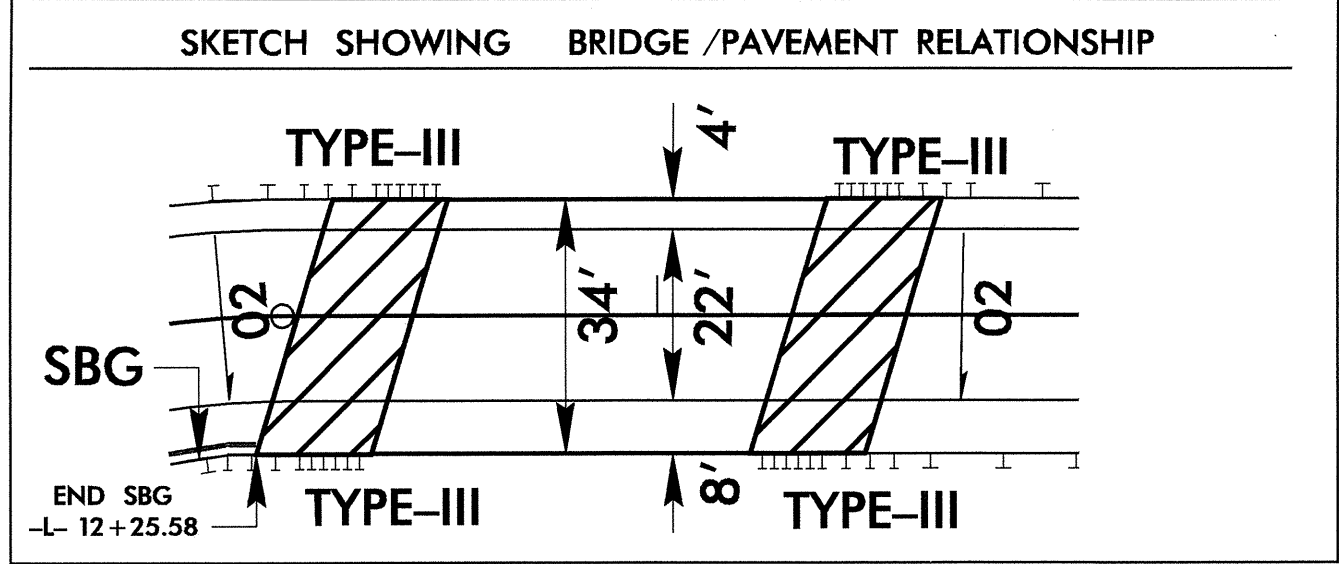
1591 MAIL SERVICES CENTER
RALEIGH NC 27699-1591
PHONE (919) 250-4128
FAX (919) 250-4119

Roger Worthington, P.E. UTILITIES SECTION ENGINEER
Corey Bousquet, P.E. UTILITIES SQUAD LEADER PROJECT ENGINEER
Nabil Hamdan UTILITIES PROJECT DESIGNER

18-DEC-2007 14:42
C:\UTILITIES\RDY\proj\b4675_rdy_tsh_u01.dgn
\$\$\$\$\$USERNAME\$\$\$\$\$

UTILITIES BY OTHERS

NOTE:
ALL PROPOSED UTILITY WORK
SHOWN ON THIS SHEET WILL
BE DONE BY OTHERS



BM#2
-L- STA 12+06.08 147.48' LT. =
ELEV. 1210.85'
-BL- STA 11+51.11 141.03' LT

-L- STA 12+53.21 30.99' LT. =
-BL- 5' 11+51.11 PINC

SPECIAL CUT BASE DITCH
SEE DETAIL "B"
Temp. Flexible 15" PCP to be
Adj. as directed by the Engineer
Inv. In at Sta. 12+32-L-11

CLASS B RIP-RAP
EST. 3 TONS
FILTER FABRIC
EST. 14 SQ. YDS.

-L- +53.65
66.32' LT.
-L- +47.21
50' LT.
-L- +43.00
80' LT.

Do not disturb gate and
solar-powered gate opener
-L- PCSta. 11+21.80

-L- +21.80
50' LT.
SPECIAL CUT BASE DITCH
LINED W/PSRM
SEE DETAIL "A"
-L- +50.00
ON RW,
50' LT.

BEGIN PROJECT B-4675
-L- PC Sta. 10+50.00
-L- POT Sta. 10+00.00

-BL-3 5+00.00 POT

-BL-4 7+17.74 PINC

MONTY LANE WILSON
GREGORY TRENT WILSON
DB 679 PG 065

MICHAEL C. TREADAWAY
DB 1033 PG 402

BM#1
-BL- STA 5+17.57
77.74' RIGHT
ELEV. 1228.50'

-L- +21.80
50' RT.
BEG SBG
-L- 11+42.00

-L- +50.00
ON RW,
50' RT.

CLASS B RIP-RAP
EST. 1 TONS
FILTER FABRIC
EST. 5 SQ. YDS.
CLASS I RIP-RAP
EST. 1 TONS
FILTER FABRIC
EST. 12 SQ. YDS.

VIRGINIA C. ANDERSON
DB 528 PG 413

END APPROACH SLAB
-L- POT Sta. 13+54.90

END BRIDGE
-L- POT Sta. 13+40.90

-L- +52.96
ON RW,
50' RT.

END PROJECT B-4675
-L- PT Sta. 15+52.96

-L-
PI Sta 11+90.35
Δ = 71° 37' 43.0" (RT)
D = 60' 18' 40.8"
L = 118.76'
T = 68.55'
R = 95.00'
INC = 25'
SE = RC
* V < 20 MPH

PI Sta 14+89.48
Δ = 5° 36' 00.2" (RT)
D = 4' 24' 26.5"
L = 127.01'
T = 63.58'
R = 1300.00'
INC = 25'
SE = RC
* V = 25 MPH

5/14/99
18-DEC-2007 14:52
J:\b4675\rdy_psh_u02.dgn