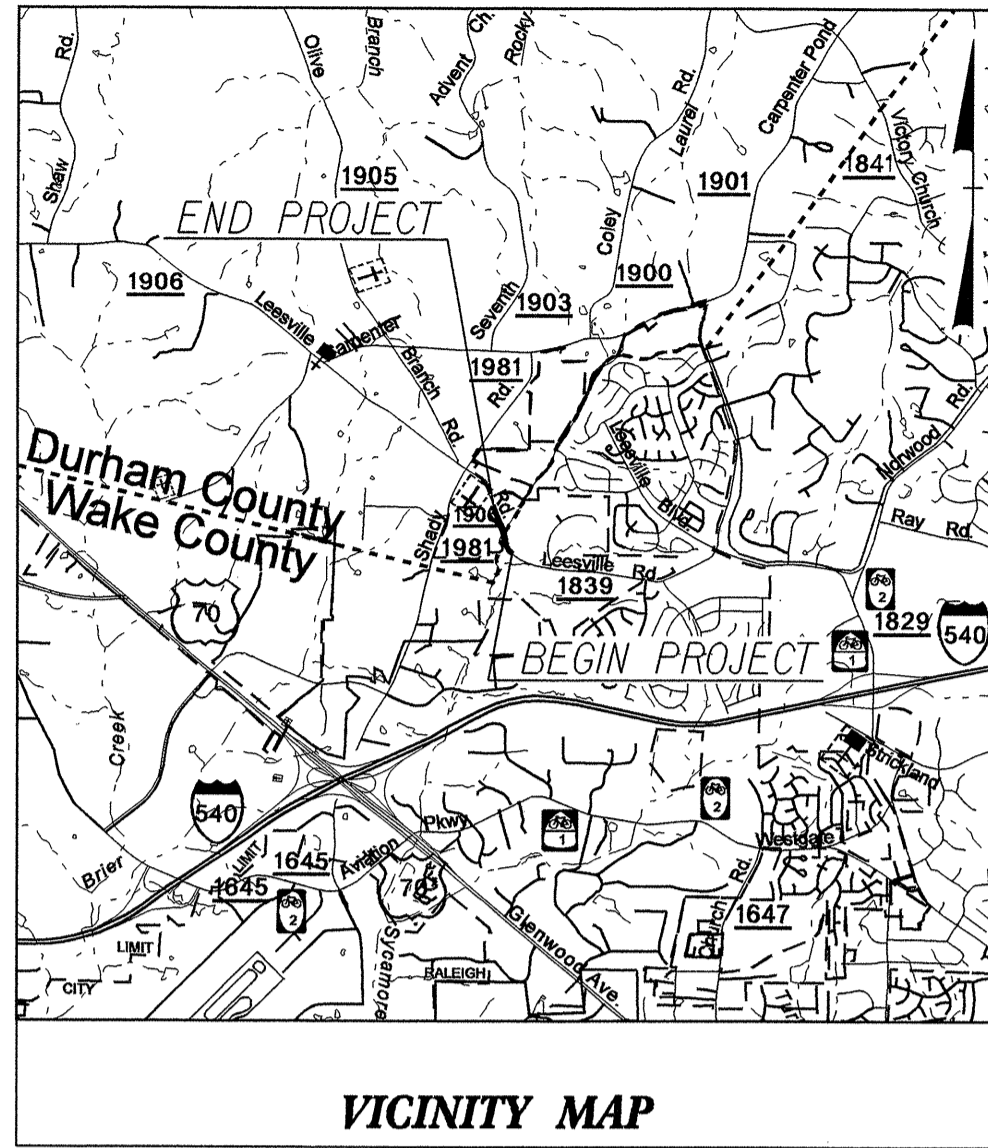


TIP PROJECT: B-3528

CONTRACT: C201783

THIS PROJECT IS WITHIN THE MUNICIPAL BOUNDARY OF RALEIGH



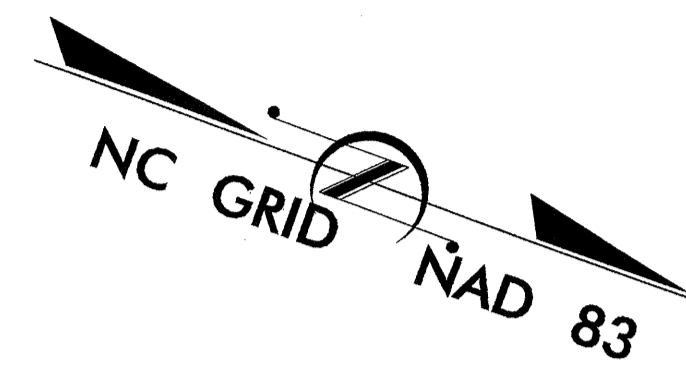
STATE OF NORTH CAROLINA
DIVISION OF HIGHWAYS

**UTILITY CONSTRUCTION PLANS
WAKE AND DURHAM COUNTIES**

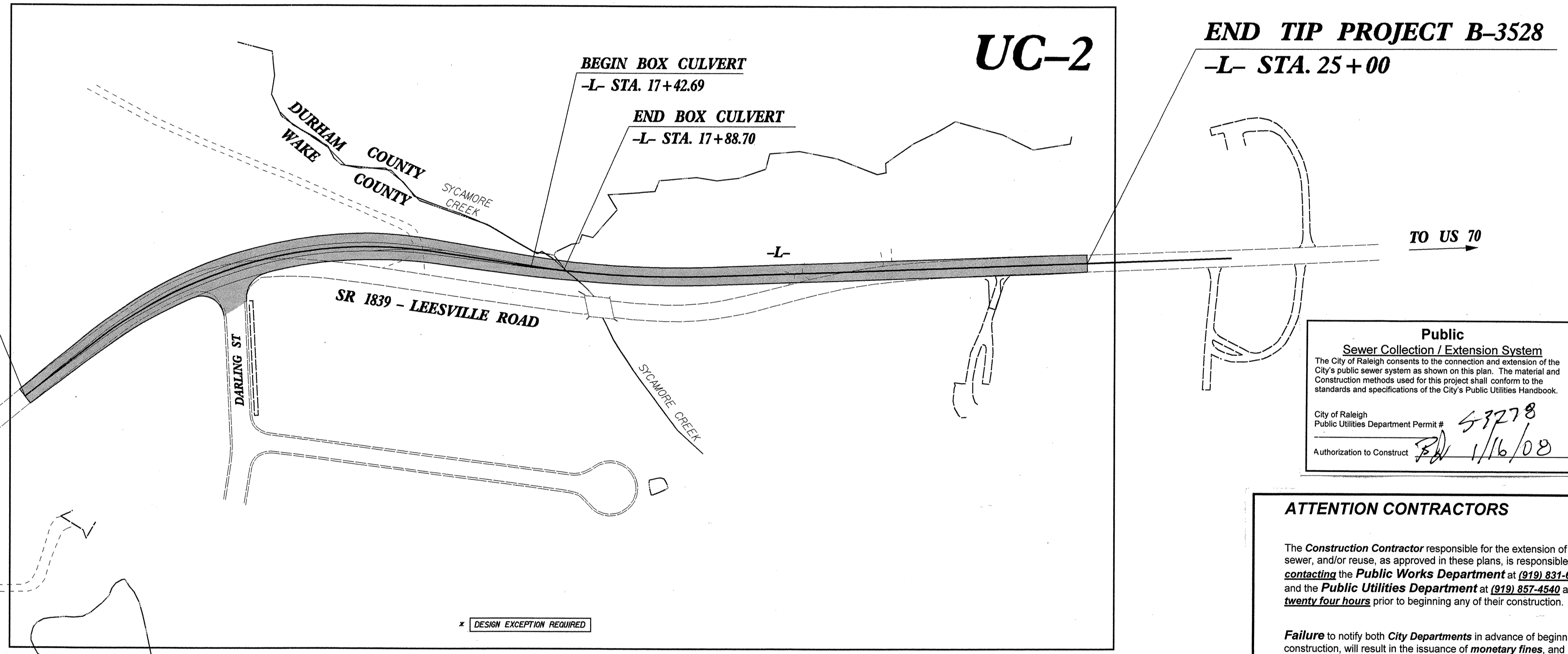
LOCATION: BRIDGE 429 OVER SYCAMORE CREEK ON S.R. 1839 AND APPROACHES

TYPE OF WORK: UTILITY CONSTRUCTION

T.I.P. NO.	SHEET NO.
B-3528	UC-1



BEGIN TIP PROJECT B-3528
-L- STA. 10+00



Public Sewer Collection / Extension System
The City of Raleigh consents to the connection and extension of the City's public sewer system as shown on this plan. The material and construction methods used for this project shall conform to the standards and specifications of the City's Public Utilities Handbook.
City of Raleigh
Public Utilities Department Permit # 53278
Authorization to Construct PD 1/16/08

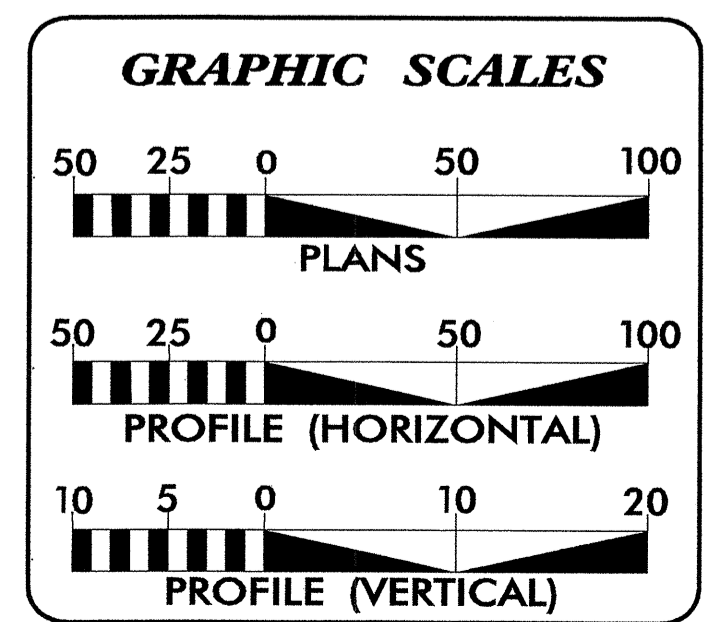
ATTENTION CONTRACTORS

The **Construction Contractor** responsible for the extension of water, sewer, and/or reuse, as approved in these plans, is responsible for **contacting** the **Public Works Department** at (919) 831-6810 and the **Public Utilities Department** at (919) 857-4540 at least **twenty four hours** prior to beginning any of their construction.

Failure to notify both **City Departments** in advance of beginning construction, will result in the issuance of **monetary fines**, and require reinstallation of any water or sewer facilities not inspected as a result of this notification failure.

Failure to call for **Inspection, Install a Downstream Plug**, have **Permitted Plans** on the **Jobsite**, or any other **Violation of City of Raleigh Standards** will result in a **Fine and Possible Exclusion** from future work in the **City of Raleigh**.

CLEARING ON THIS PROJECT SHALL BE PERFORMED TO THE LIMITS ESTABLISHED BY METHOD III.

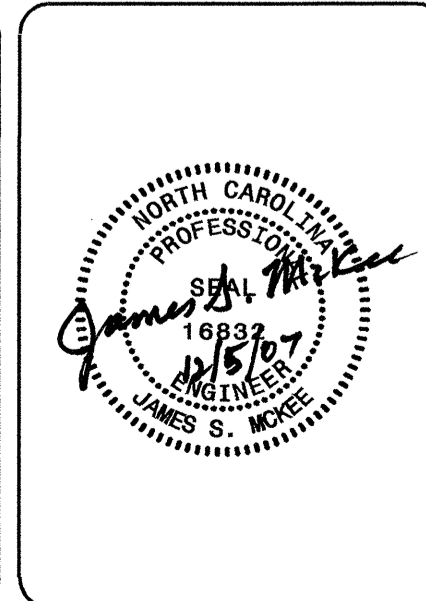


INDEX OF SHEETS

SHEET NO.	DESCRIPTION
UC-1	TITLE SHEET
UC-2	PLAN SHEET
UC-3	PROFILE SHEET
UC-4	DETAIL SHEET

WATER AND SEWER OWNERS ON PROJECT

(1) CITY OF RALEIGH - SANITARY SEWER



PREPARED IN THE OFFICE OF:
**DIVISION OF HIGHWAYS
PROJECT SERVICES
UTILITY SECTION**

1591 MAIL SERVICES CENTER
RALEIGH NC 27699-1591
PHONE (919) 250-4128
FAX (919) 250-4119

Roger Worthington, P.E. UTILITIES SECTION ENGINEER
Steve McKee, P.E. UTILITIES SQUAD LEADER PROJECT ENGINEER
Donald Proper UTILITIES PROJECT DESIGNER

8/17/99

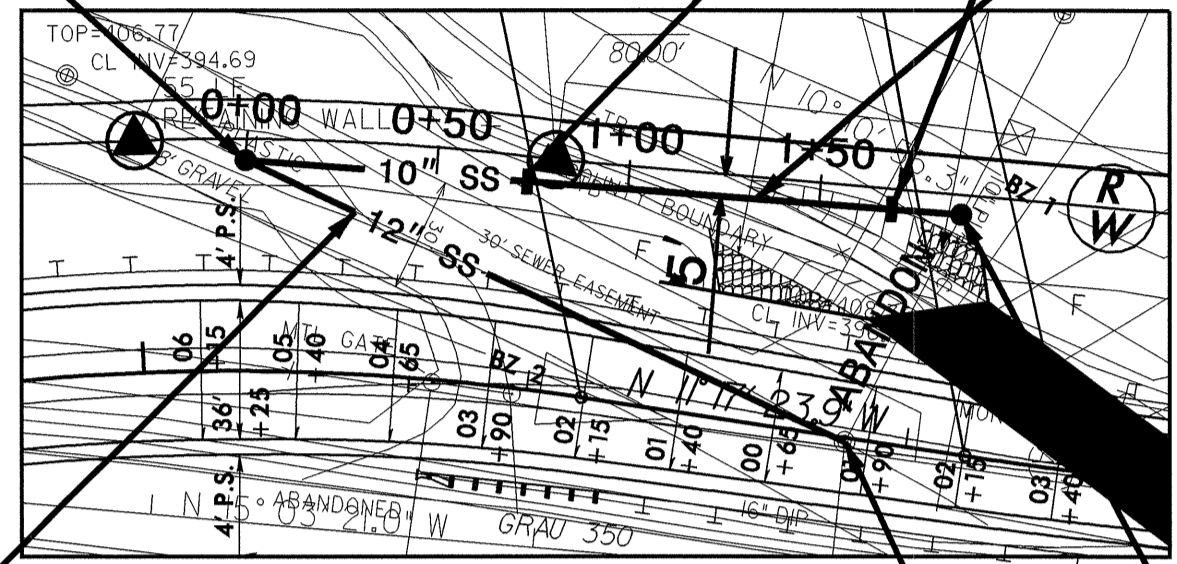
PROJECT REFERENCE NO.	SHEET NO.
B-3528	UC-3
DESIGNED BY: DWP	
DRAWN BY: DWP	
CHECKED BY: JSM	
APPROVED BY: JSM	
REVISD:	
NORTH CAROLINA DEPARTMENT OF TRANSPORTATION PROJECT SERVICES UNIT PHONE: (919) 250-4128 FAX: (919) 250-4119	
UTILITY CONSTRUCTION PLANS ONLY	

UTILITY CONSTRUCTION

PROP. M.H. STA. 0+00.00
 TOP ELEV. = 404.20
 INVERT IN (2) = 395.27
 INVERT OUT = 395.27

(2) PROP. CONCRETE
 THRUST COLLARS

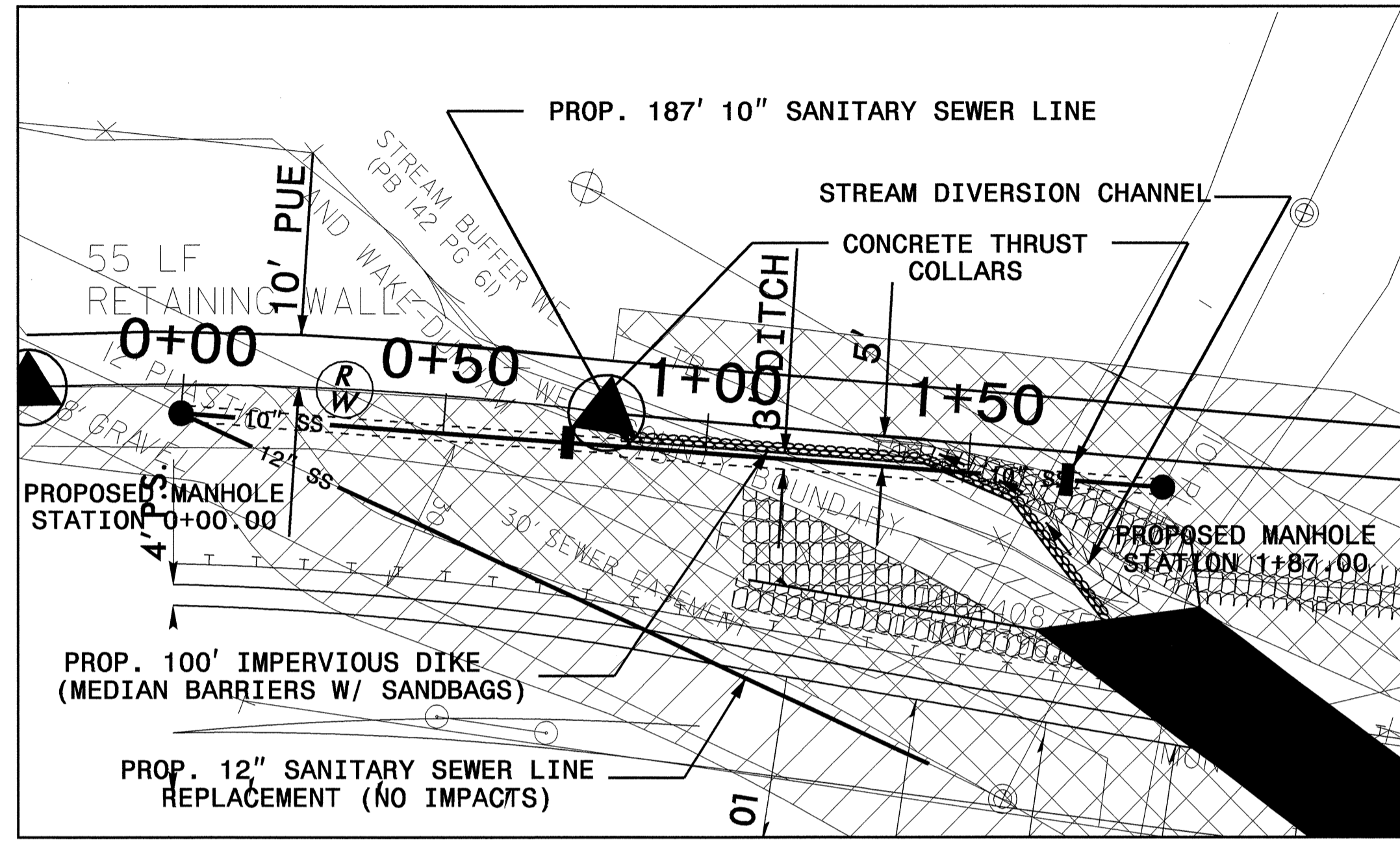
PROP. 187.00' 10" RESTRAINED
 JOINT DUCTILE IRON SEWER MAIN
 @ 0.28% GRADE



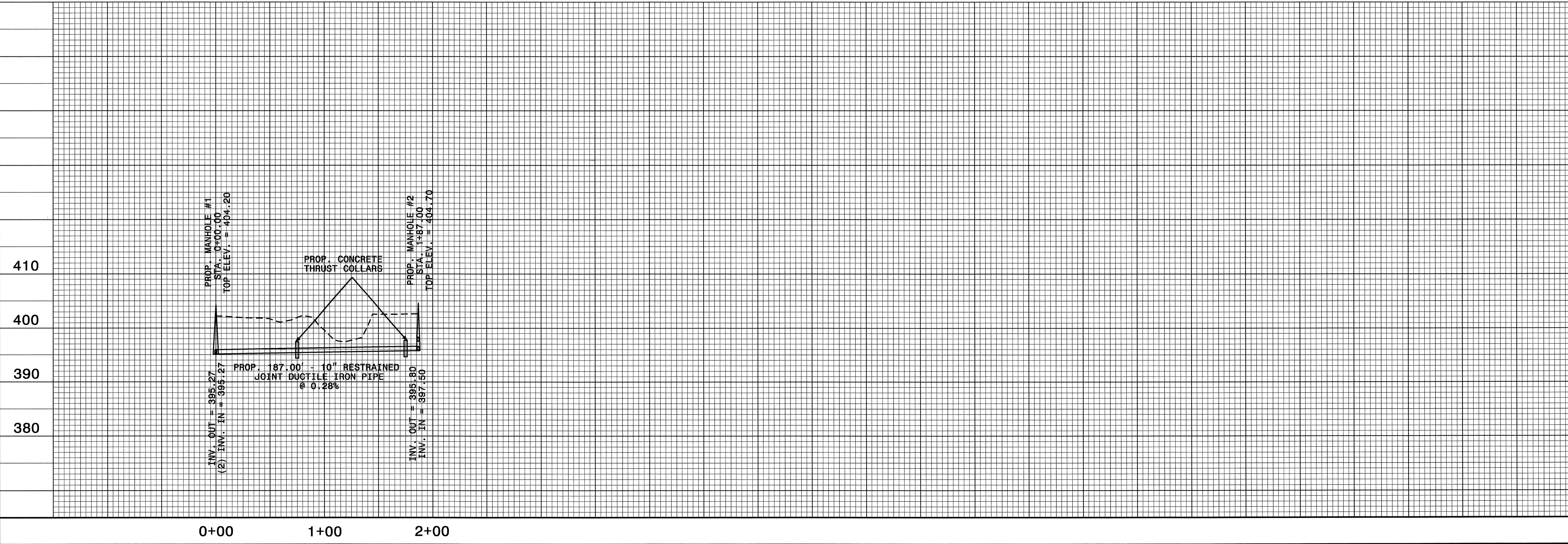
PROP. M.H. STA. 1+87.00
 TOP ELEV. = 404.70
 INVERT IN = 397.50
 INVERT OUT = 395.80

PROP. (1) ADJUSTMENT OF MANHOLES AND
 (2) MASONRY DRAINAGE STRUCTURE
 PLUG EXISTING 10" INVERT FROM WEST
 EX. INVERT = 396.80
 EX. TOP ELEV. = 408.75
 PROP. TOP ELEV. = 411.89

PROP. 172.38' 12" DUCTILE IRON
 SEWER MAIN - REPLACE EXISTING
 PVC LINE IN SAME LOCATION
 @ 0.94% GRADE

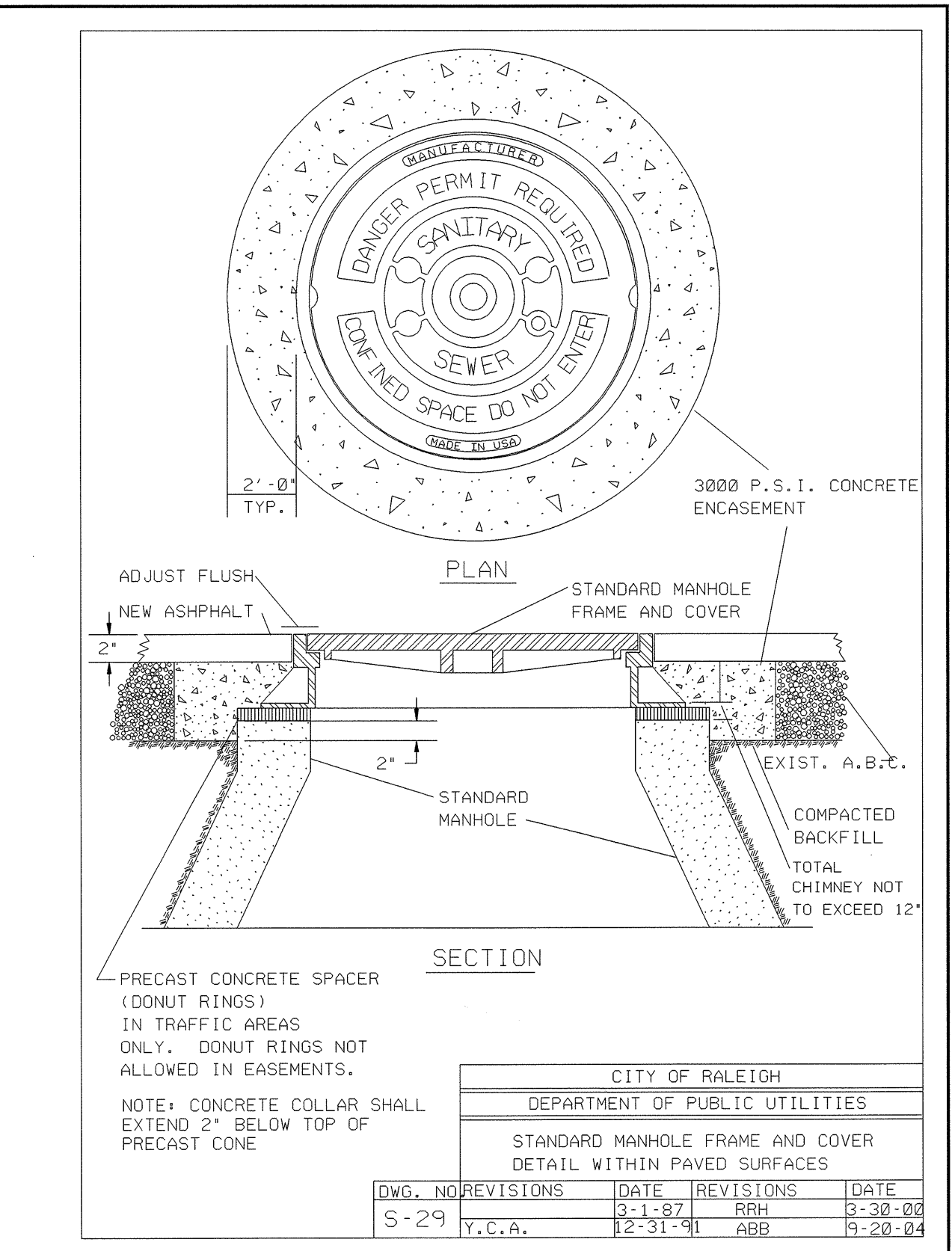
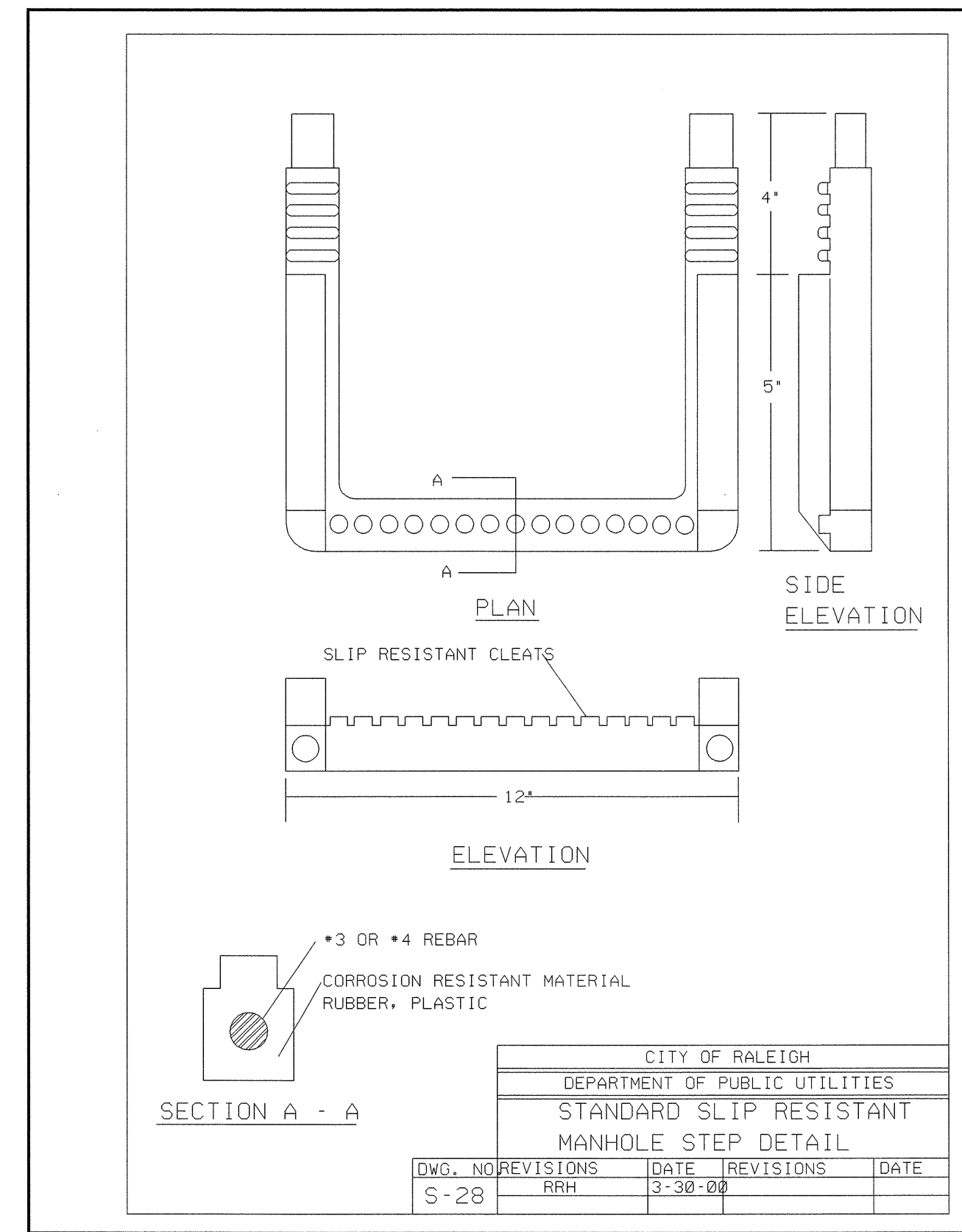
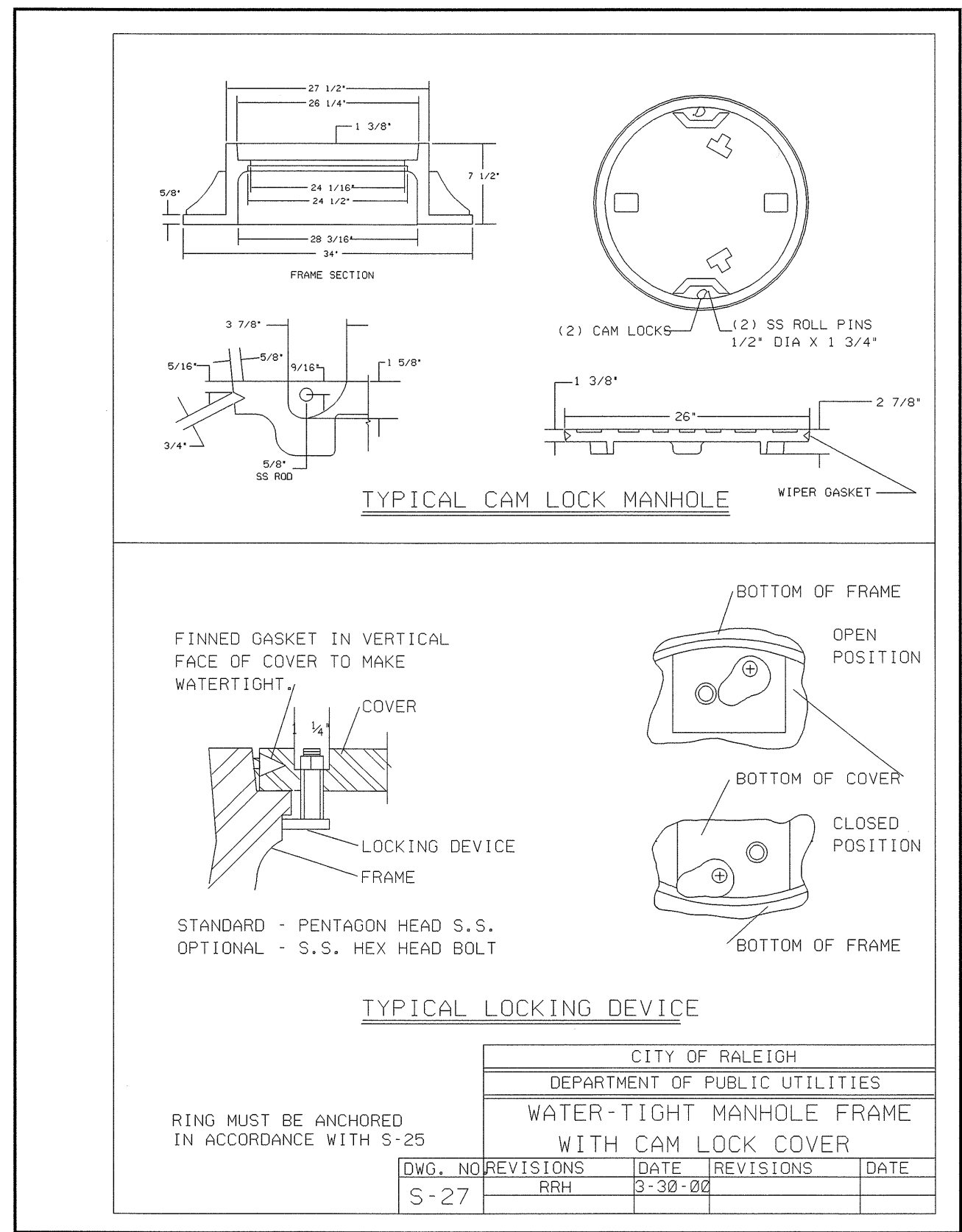
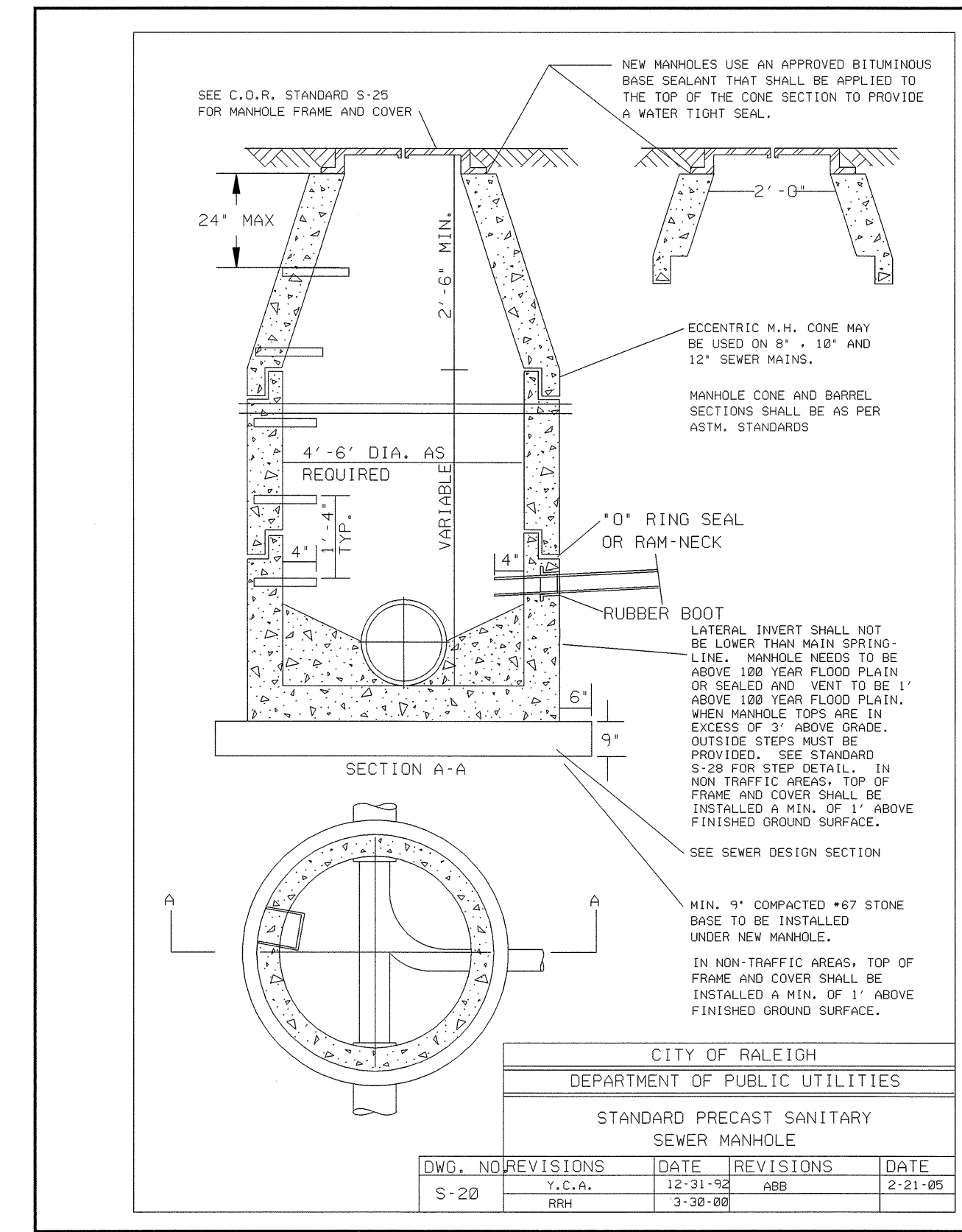
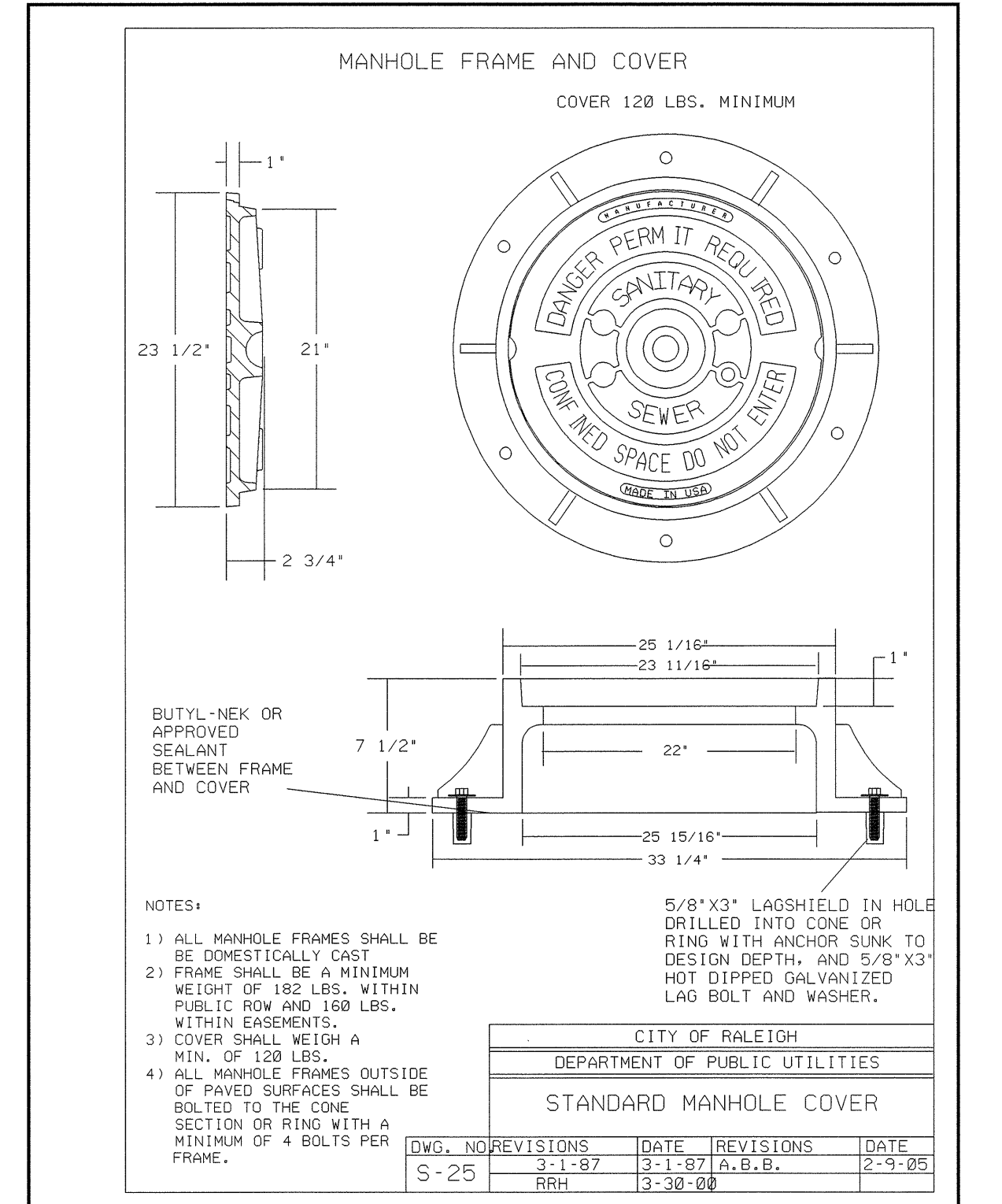
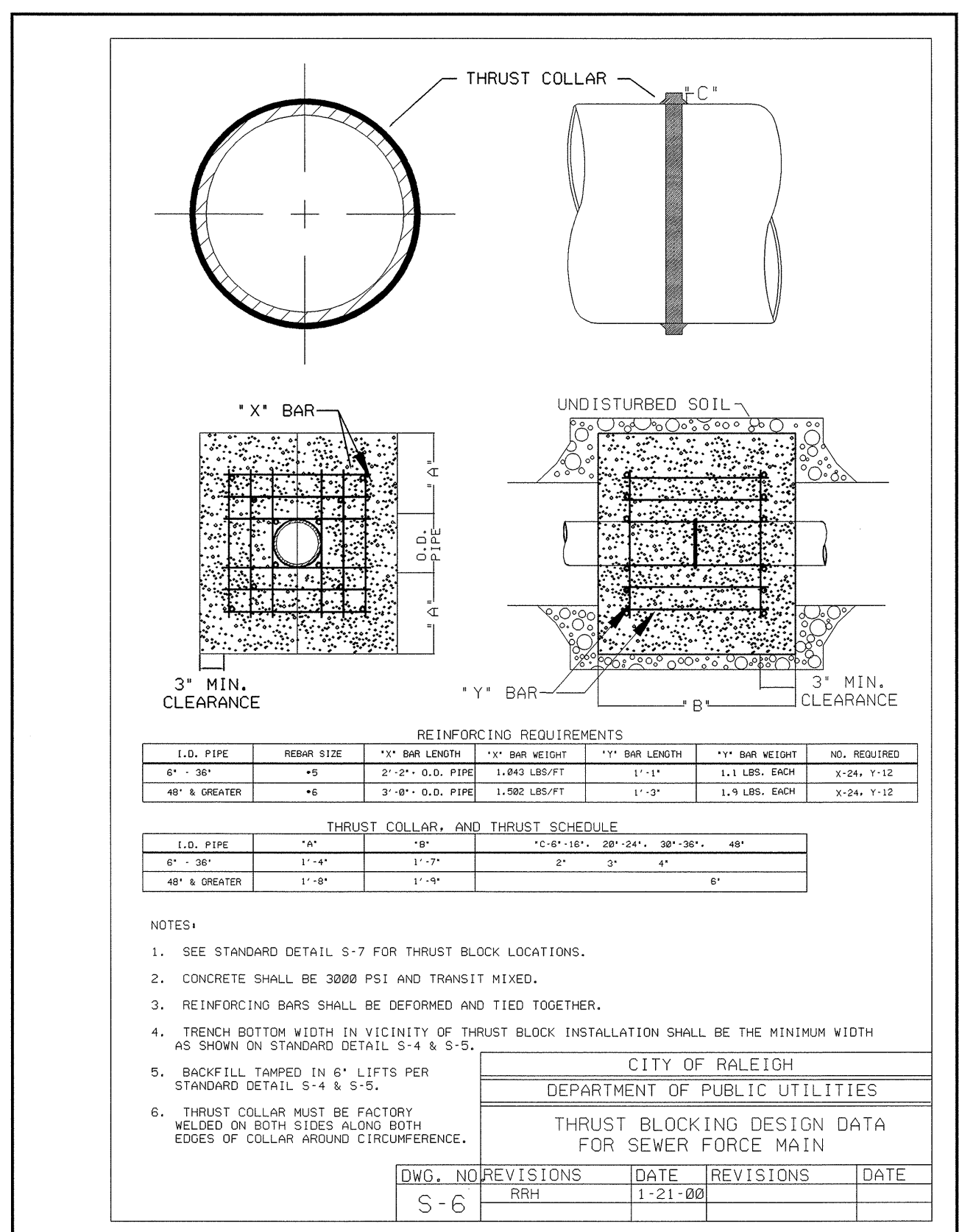
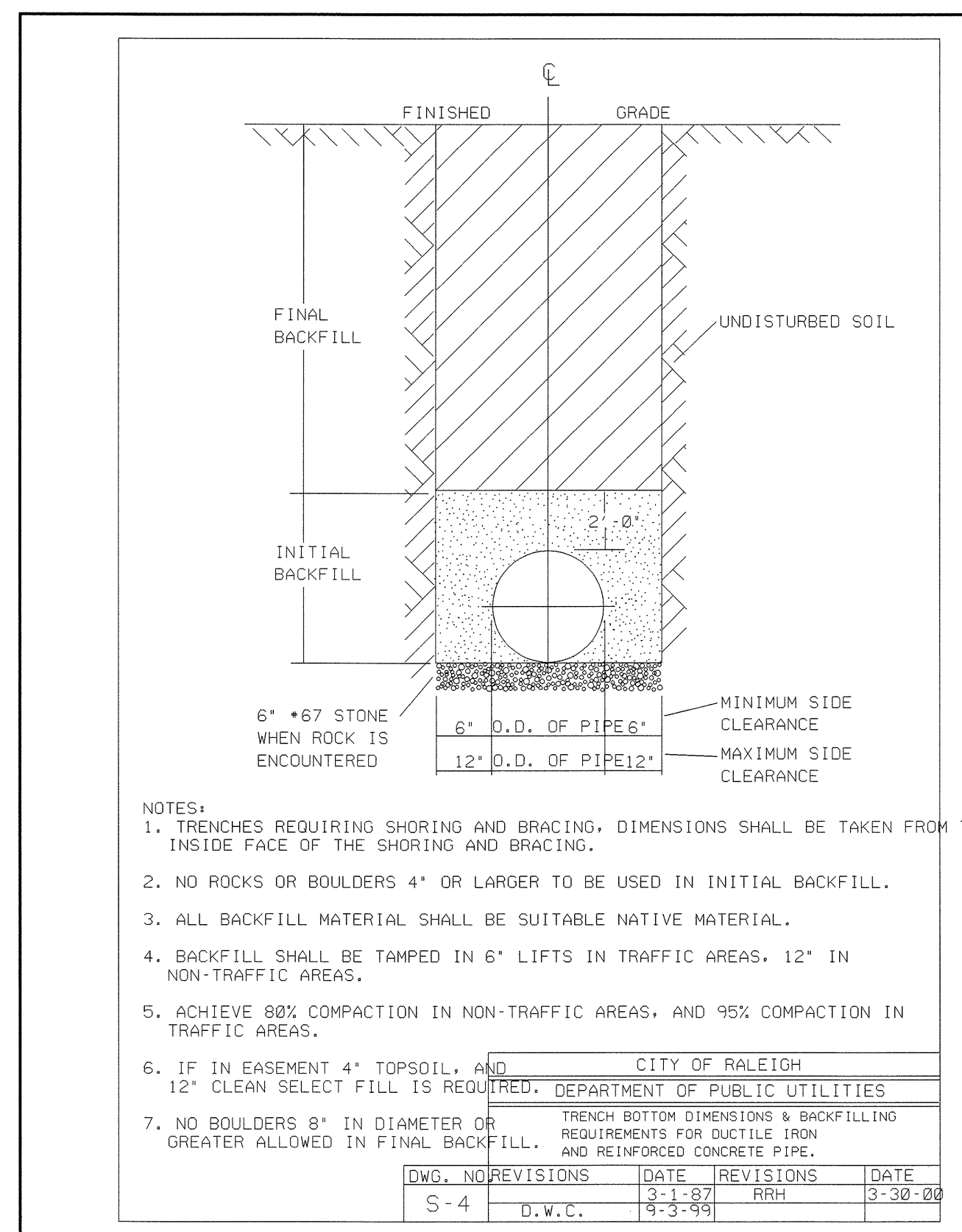
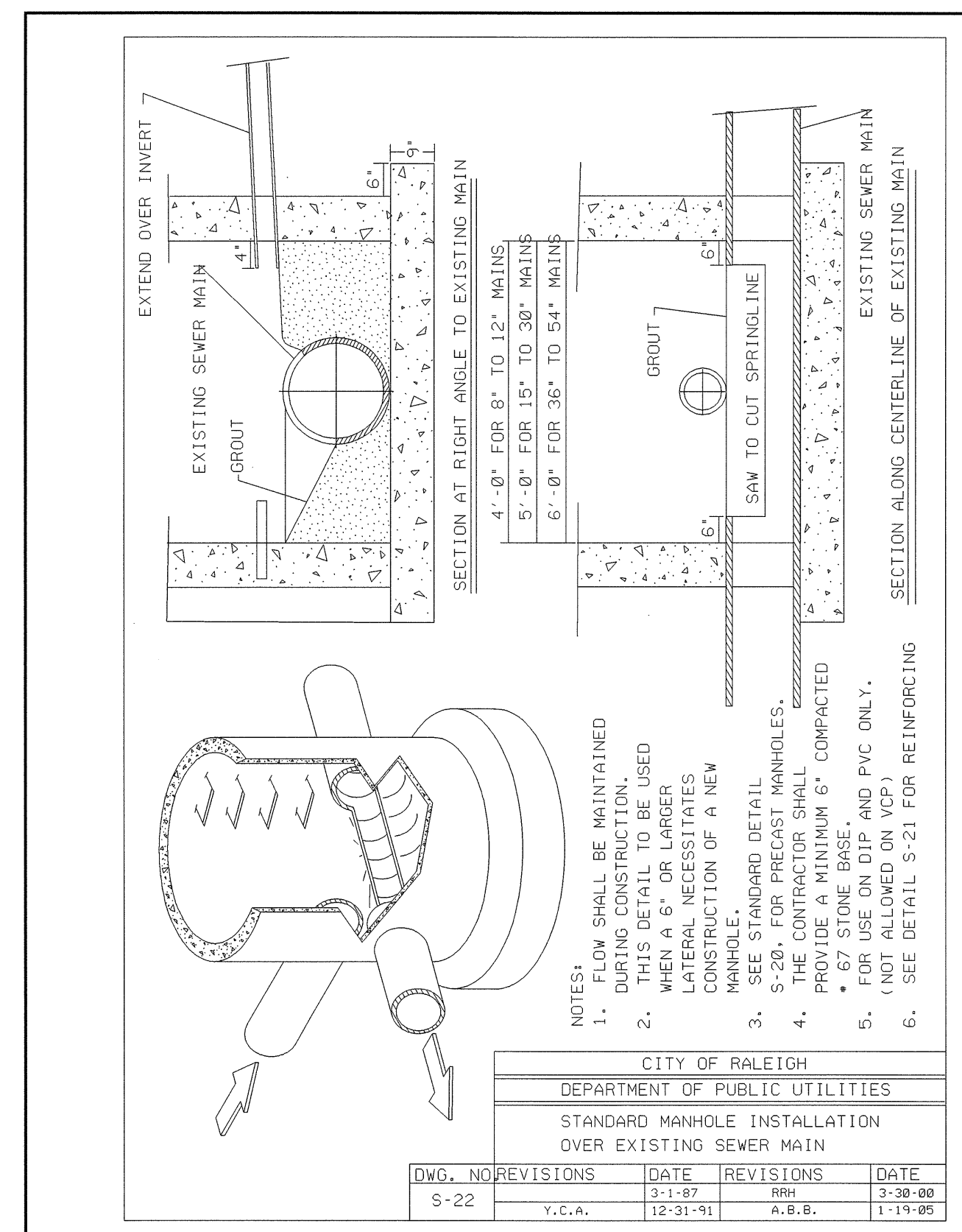


STREAM CROSSING DETAIL (NTS)



PROJECT REFERENCE NO.	SHEET NO.
B-3528	UC-4
DESIGNED BY: DWP	
DRAWN BY: DWP	
CHECKED BY: JSM	
APPROVED BY: JSM	
REVISED:	
NORTH CAROLINA DEPARTMENT OF TRANSPORTATION PROJECT SERVICES UNIT PHONE: (919) 250-4128 FAX: (919) 250-4119	
UTILITY CONSTRUCTION PLANS ONLY	

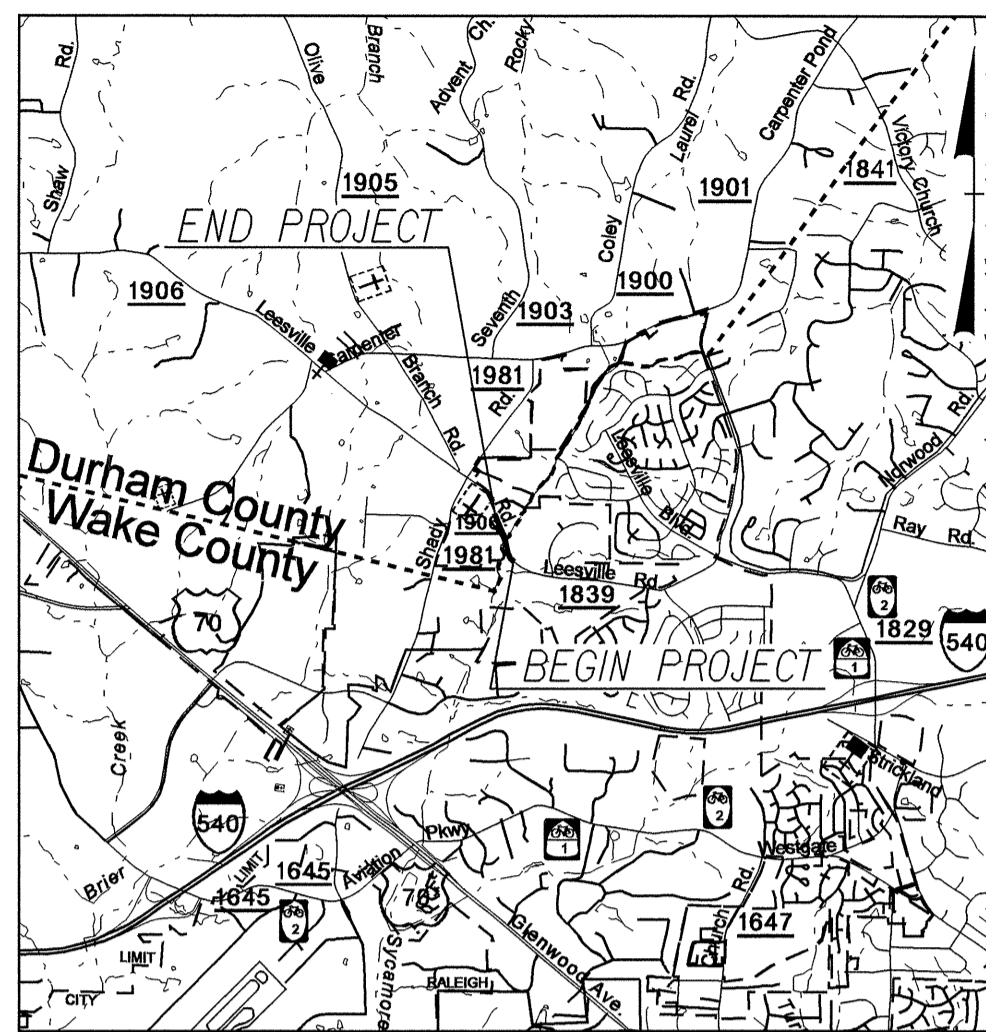
UTILITY CONSTRUCTION



TIP PROJECT: B-3528

CONTRACT: C201783

THIS PROJECT IS WITHIN THE MUNICIPAL BOUNDARY OF RALEIGH



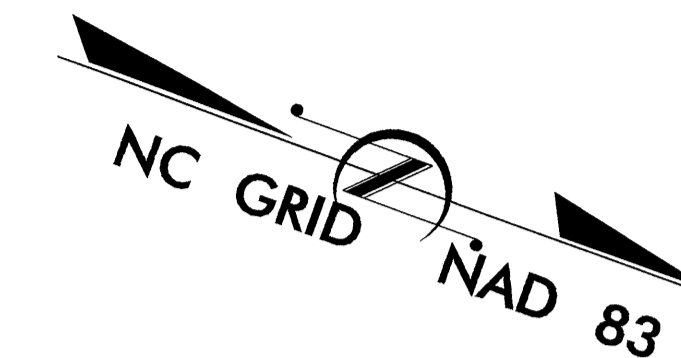
VICINITY MAP

STATE OF NORTH CAROLINA
DIVISION OF HIGHWAYS

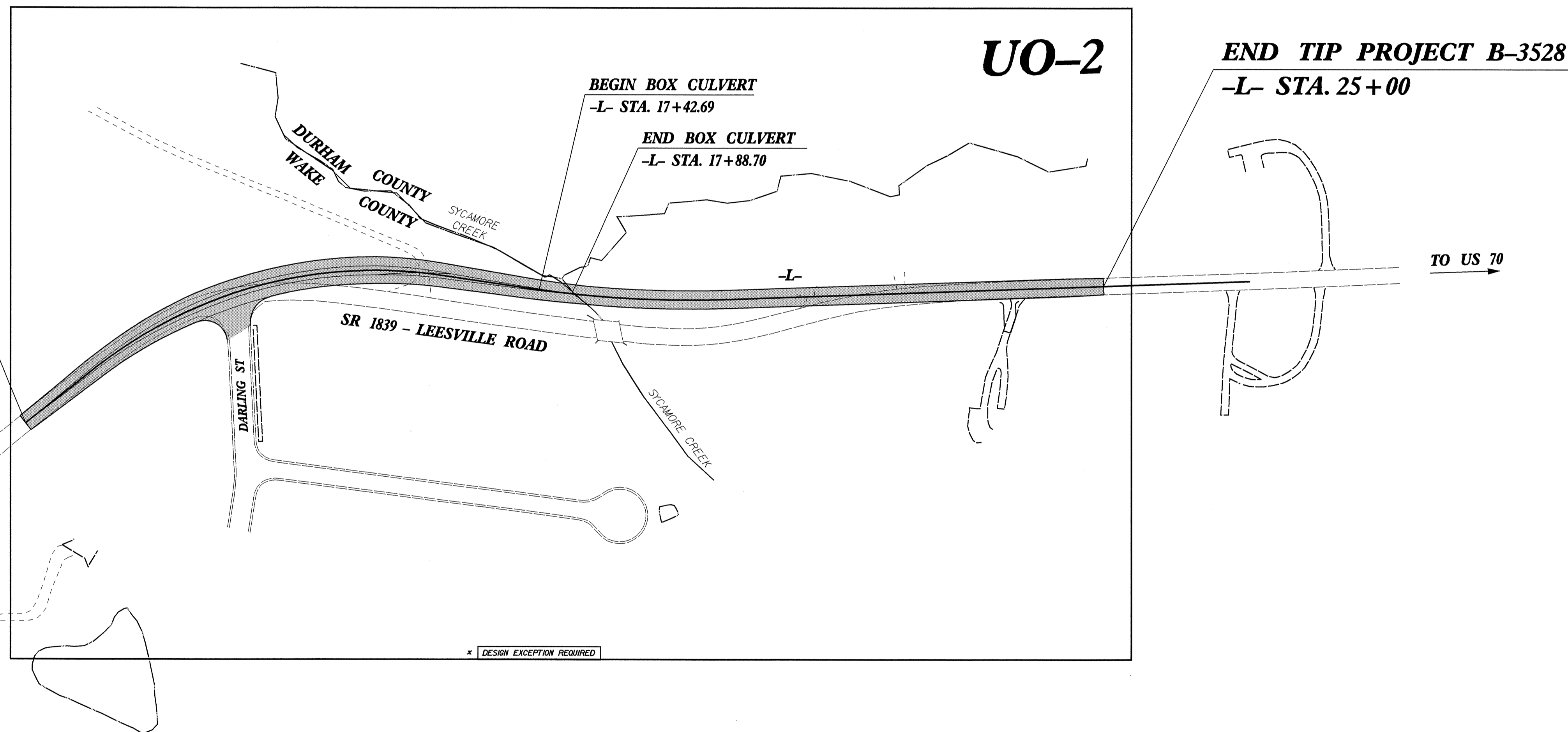
**UTILITIES BY OTHERS PLANS
WAKE AND DURHAM COUNTIES**

LOCATION: BRIDGE 429 OVER SYCAMORE CREEK ON S.R.1839 AND APPROACHES
TYPE OF WORK: UTILITIES BY OTHERS

T.I.P. NO.	SHEET NO.
B-3528	UO-1

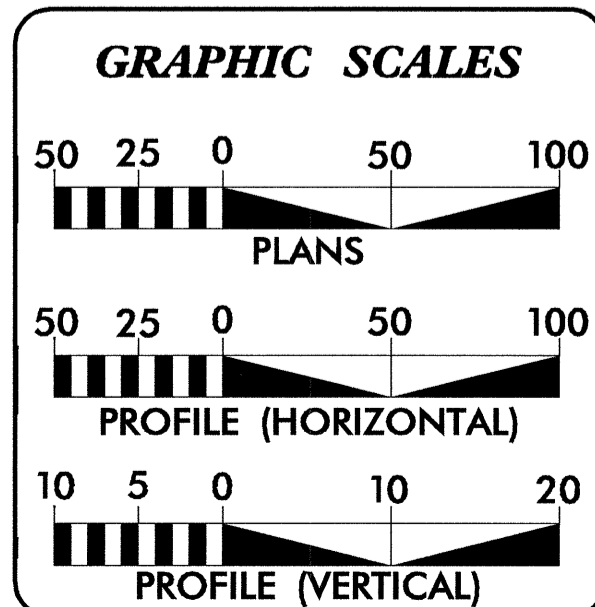


BEGIN TIP PROJECT B-3528
-L- STA. 10+00



END TIP PROJECT B-3528
-L- STA. 25+00

CLEARING ON THIS PROJECT SHALL BE PERFORMED TO THE LIMITS ESTABLISHED BY METHOD III.



INDEX OF SHEETS	
SHEET NO.	DESCRIPTION
UO-1	TITLE SHEET
UO-2	PLAN SHEET

UTILITY OWNERS ON PROJECT
(1) DUKE ENERGY - POWER
(2) TIME WARNER - CABLE TELEVISION
(3) VERIZON - TELEPHONE
(4) LEVEL 3 - TELEPHONE
(5) PSNC ENERGY - GAS

PREPARED IN THE OFFICE OF:
**DIVISION OF HIGHWAYS
 PROJECT SERVICES
 UTILITY SECTION**

1591 MAIL SERVICES CENTER
 RALEIGH, NC 27699-1591
 PHONE (919) 250-4128
 FAX (919) 250-4119

Roger Worthington, P.E. UTILITIES SECTION ENGINEER
Steve McKee, P.E. UTILITIES SQUAD LEADER PROJECT ENGINEER
Donald Proper UTILITIES PROJECT DESIGNER

UTILITIES BY OTHERS

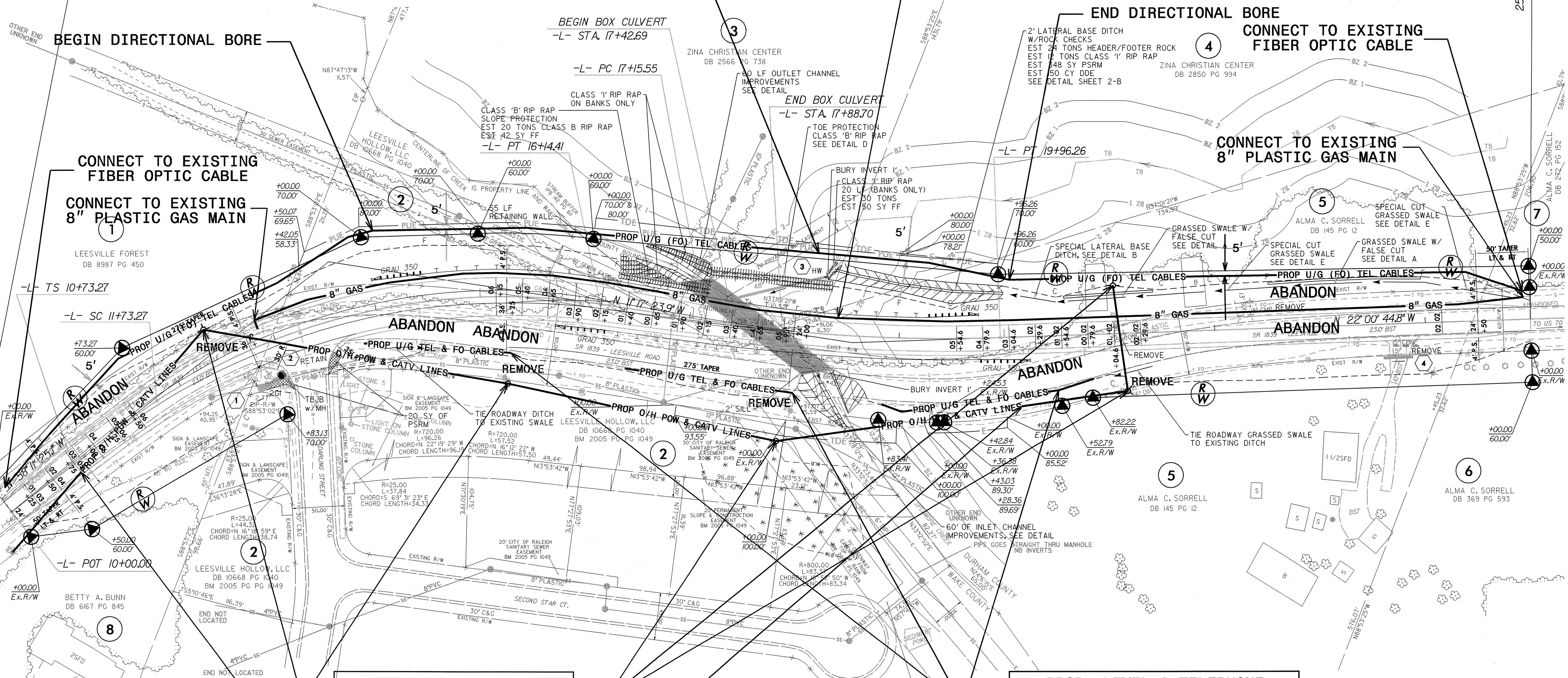
NOTE:
ALL PROPOSED UTILITY WORK SHOWN ON THIS SHEET WILL BE DONE BY OTHERS

PROP. VERIZON TELEPHONE UNDERGROUND FIBER OPTIC CABLE AND CONDUIT INSTALLED BY OPEN TRENCHING AND DIRECTIONAL BORE

PROP. PSNC ENERGY 8" PLASTIC GAS MAIN ALONG EDGE OF PAVEMENT

BEGIN PROJECT B-3528
-L- POC STA. 10+00

END PROJECT B-3528
-L- POT STA. 25+00



CONNECT TO EXISTING FIBER OPTIC CABLE
CONNECT TO EXISTING 8" PLASTIC GAS MAIN

CONNECT TO EXISTING FIBER OPTIC CABLE

CONNECT TO EXISTING 8" PLASTIC GAS MAIN

PROP. DUKE ENERGY UTILITY POLES

PROP. DUKE ENERGY POWER AND TIME WARNER CABLE TELEVISION LINES

PROP. LEVEL 3 TELEPHONE UNDERGROUND FIBER OPTIC CABLE EXPOSE AND LOWER ADJACENT TO EXISTING CABLE (3 LOCATIONS)