

STATE OF NORTH CAROLINA
DIVISION OF HIGHWAYS

STATE PROJECT REFERENCE NO.	SHEET NO.
B-4212	TCP-1

**PLAN FOR PROPOSED
TRAFFIC CONTROL, MARKING & DELINEATION
NORTHAMPTON COUNTY**

B-4212

ROADWAY STANDARD DRAWINGS

THE FOLLOWING ROADWAY STANDARDS AS APPEAR IN "ROADWAY STANDARD DRAWINGS" - PROJECT SERVICES UNIT-N.C. DEPARTMENT OF TRANSPORTATION-RALEIGH, N.C., DATED JULY 2006 ARE APPLICABLE TO THIS PROJECT AND BY REFERENCE HEREBY ARE CONSIDERED A PART OF THESE PLANS:

STD. NO.	TITLE
1101.02	TEMPORARY LANE CLOSURES
1101.03	TEMPORARY ROAD CLOSURES
1101.11	TRAFFIC CONTROL DESIGN TABLES
1110.01	STATIONARY WORK ZONE SIGNS
1110.02	PORTABLE WORK ZONE SIGNS
1115.01	FLASHING ARROW PANELS
1130.01	DRUM
1135.01	CONES
1145.01	BARRICADES
1150.01	FLAGGING DEVICES
1165.01	TRUCK MOUNTED IMPACT ATTENUATOR
1205.01	PAVEMENT MARKINGS - LINE TYPES & OFFSETS
1205.02	PAVEMENT MARKINGS - 2 LANE & MULTILANE ROADWAYS
1205.04	PAVEMENT MARKINGS - INTERSECTIONS
1205.05	PAVEMENT MARKINGS - TURN LANES
1205.06	PAVEMENT MARKINGS - THRU LANE DROPS
1205.08	PAVEMENT MARKINGS - SYMBOLS & WORD MESSAGES
1205.12	PAVEMENT MARKINGS - BRIDGES
1250.01	PAVEMENT MARKER SPACING
1251.01	RAISED PAVEMENT MARKERS (TEMPORARY & PERMANENT)
1261.01	GUARDRAIL & BARRIER DELINEATOR SPACING
1261.02	GUARDRAIL & BARRIER DELINEATOR TYPES
1262.01	GUARDRAIL END DELINEATION
1264.01	OBJECT MARKERS
1264.02	PLACEMENT OF OBJECT MARKERS

INDEX OF SHEETS

SHEET NO.	TITLE
TCP-1	LIST OF APPLICABLE ROADWAY STANDARD DRAWINGS, LEGEND AND INDEX OF SHEETS
TCP-2	PROJECT NOTES / PHASING
TCP-3	DETOUR SIGNING
TCP-4	DETOUR SIGNING DETAILS / DEVICES

LEGEND

- GENERAL**
- DIRECTION OF TRAFFIC FLOW
 - NORTH ARROW
 - PROPOSED PVMT. EXIST. PVMT.
 - WORK AREA
 - REMOVAL OF EXISTING PAVEMENT
- TRAFFIC CONTROL DEVICES**
- TYPE I BARRICADE
 - TYPE II BARRICADE
 - TYPE III BARRICADE
 - CONE
 - DRUM SKINNY DRUM
 - FLASHING ARROW PANEL (TYPE C)
 - STATIONARY SIGN
 - PORTABLE SIGN
 - STATIONARY OR PORTABLE SIGN
 - CRASH CUSHION
 - CHANGEABLE MESSAGE SIGN
 - TRUCK MOUNTED IMPACT ATTENUATOR (TMIA)
 - POLICE
 - FLAGGER

PAVEMENT MARKING SCHEDULE

SYMBOL	DESCRIPTION	FINAL	PAY ITEM QUANTITY BREAKDOWN		TOTAL QUANTITY
PAVEMENT MARKINGS					
		THERMOPLASTIC(4", 120 MILS)			
TI	YELLOW DOUBLE CENTER		87614	LF	
				TOTAL	87614 LF
		THERMOPLASTIC(4", 90 MILS)			
TA	WHITE EDGELINE		87614	LF	
				TOTAL	87614 LF
MARKERS					
		PERMANENT RAISED PAVEMENT MARKERS			
MA	YELLOW & YELLOW		548	EA	
				TOTAL	548 EA

- PAVEMENT MARKINGS**
- CRYSTAL/CRYSTAL PAVEMENT MARKER
 - YELLOW/YELLOW PAVEMENT MARKER
 - CRYSTAL/RED PAVEMENT MARKER
 - PAVEMENT MARKING SYMBOLS

APPROVED:	PLAN PREPARED BY: N.C.D.O.T. WORK ZONE TRAFFIC CONTROL UNIT
DATE: 12/4/07	
SEAL	J. S. BOURNE, P.E. TRAFFIC CONTROL ENGINEER
	J. S. KITE, P.E. TRAFFIC CONTROL PROJECT ENGINEER
	J. D. KUSE, P.E. TRAFFIC CONTROL PROJECT DESIGN ENGINEER
	R. M. GARRETT TRAFFIC CONTROL DESIGN ENGINEER / TECHNICIAN



TIP PROJECT:

GENERAL NOTES

CHANGES MAY BE REQUIRED WHEN PHYSICAL DIMENSIONS IN THE DETAIL DRAWINGS, STANDARD DETAILS AND ROADWAY DETAILS ARE NOT ATTAINABLE TO MEET FIELD CONDITIONS, OR RESULT IN DUPLICATE, OR UNDESIRED OVERLAPPING OF DEVICES. MODIFICATION MAY INCLUDE: MOVING, SUPPLEMENTING, COVERING OR REMOVAL OF DEVICES, AS DIRECTED BY THE ENGINEER.

THE FOLLOWING GENERAL NOTES APPLY AT ALL TIMES FOR THE DURATION OF THE CONSTRUCTION PROJECT, EXCEPT WHEN OTHERWISE NOTED IN THE PLAN, OR DIRECTED BY THE ENGINEER.

LANE AND SHOULDER CLOSURE REQUIREMENTS

- A) REMOVE LANE CLOSURE DEVICES FROM THE LANE WHEN WORK IS NOT BEING PERFORMED BEHIND THE LANE CLOSURE OR WHEN A LANE CLOSURE IS NO LONGER NEEDED, OR AS DIRECTED BY THE ENGINEER.
- B) WHEN PERSONNEL AND/OR EQUIPMENT ARE WORKING ON THE SHOULDER ADJACENT TO AN UNDIVIDED FACILITY AND WITHIN 5 FT OF AN OPEN TRAVEL LANE, CLOSE THE NEAREST OPEN TRAVEL LANE USING ROADWAY STANDARD DRAWING NO. 1101.02 UNLESS THE WORK AREA IS PROTECTED BY BARRIER OR GUARDRAIL.

WHEN PERSONNEL AND/OR EQUIPMENT ARE WORKING ON THE SHOULDER ADJACENT TO A DIVIDED FACILITY AND WITHIN 10 FT OF AN OPEN TRAVEL LANE, CLOSE THE NEAREST OPEN TRAVEL LANE USING ROADWAY STANDARD DRAWING NO. 1101.02 UNLESS THE WORK AREA IS PROTECTED BY BARRIER OR GUARDRAIL.

- C) WHEN PERSONNEL AND/OR EQUIPMENT ARE WORKING WITHIN A LANE OF TRAVEL OF AN UNDIVIDED OR DIVIDED FACILITY, CLOSE THE LANE ACCORDING TO THE TRAFFIC CONTROL PLANS, ROADWAY STANDARD DRAWINGS OR AS DIRECTED BY THE ENGINEER. CONDUCT THE WORK SO THAT ALL PERSONNEL AND/OR EQUIPMENT REMAIN WITHIN THE CLOSED TRAVEL LANE.

PAVEMENT EDGE DROP OFF REQUIREMENTS

- D) DO NOT EXCEED A DIFFERENCE OF 2 INCHES IN ELEVATION BETWEEN OPEN LANES OF TRAFFIC FOR NOMINAL LIFTS OF 1.5 INCHES. INSTALL ADVANCE WARNING "UNEVEN LANES" SIGNS (W8-11) 500 FT IN ADVANCE AND A MINIMUM OF EVERY HALF MILE THROUGHOUT THE UNEVEN AREA.

TRAFFIC PATTERN ALTERATIONS

- E) NOTIFY THE ENGINEER TWENTY ONE (21) CALENDAR DAYS PRIOR TO ANY TRAFFIC PATTERN ALTERATION.

SIGNING

- F) PROVIDE DETOUR SIGNING WITHIN THE PROJECT LIMITS.
- G) COVER OR REMOVE ALL DETOUR SIGNS WITHIN THE PROJECT LIMITS WHEN A DETOUR IS NOT IN OPERATION.
- H) STATE FORCES WILL BE RESPONSIBLE FOR DETOUR SIGNING OFF THE PROJECT LIMITS.
- I) STATE FORCES WILL COVER OR REMOVE ALL DETOUR SIGNS OFF THE PROJECT LIMITS WHEN A DETOUR IS NOT IN OPERATION.
- J) ENSURE ALL NECESSARY SIGNING IS IN PLACE PRIOR TO ALTERING ANY TRAFFIC PATTERN.

TRAFFIC CONTROL DEVICES

- I) PLACE TYPE III BARRICADES, WITH "ROAD CLOSED" SIGN R11-2 ATTACHED, OF SUFFICIENT LENGTH TO CLOSE ENTIRE ROADWAY.

PAVEMENT MARKINGS AND MARKERS

- J) INSTALL PAVEMENT MARKINGS AND PAVEMENT MARKERS ON THE FINAL SURFACE AS FOLLOWS:

ROAD NAME	MARKING	MARKER
NC 35	THERMOPLASTIC	PERMANENT RAISED PAVEMENT MARKERS
SR 1300	"	"
SR 1301	"	"
SR 1351	"	"

- K) TIE PROPOSED PAVEMENT MARKING LINES TO EXISTING PAVEMENT MARKING LINES.

- L) REMOVE/REPLACE ANY CONFLICTING/DAMAGED PAVEMENT MARKINGS AND MARKERS BY THE END OF EACH DAY'S OPERATION.

MISCELLANEOUS

- M) POLICE MAY BE USED TO MAINTAIN TRAFFIC THROUGH THE WORK AREA AND/OR INTERSECTIONS, AS DIRECTED BY THE ENGINEER.

LOCAL NOTES

- 1) A CMS QUANTITY IS INCLUDED IN THE CONSTRUCTION ESTIMATE TO PROVIDE ADDITIONAL ADVANCE WARNING DURING VARIOUS STAGES OF CONSTRUCTION AS DIRECTED BY THE ENGINEER. CONTACT THE WORK ZONE TRAFFIC CONTROL UNIT FOR CMS MESSAGING.

PHASING

NOTES: ENSURE PROPOSED ROAD CLOSURE AND DETOUR ROUTE IS COORDINATED THROUGH DIVISION OFFICE WITH THE NORTHAMPTON COUNTY SCHOOLS AND NORTHAMPTON COUNTY EMERGENCY MANAGEMENT SERVICES PRIOR TO NC 35 CLOSURE AND DETOUR OPERATION.

THE CONTRACTOR IS TO FURNISH, INSTALL, MAINTAIN, RELOCATE AND REMOVE CHANGEABLE MESSAGE SIGNS DURING VARIOUS STAGES OF CONSTRUCTION AT THE DESCRETION OF THE ENGINEER TO ADEQUATELY INFORM MOTORIST OF CHANGING WORK ZONE CONDITIONS. (SEE LOCAL NOTE 1)

STEP 1 - USING ROADWAY STANDARD DRAWING NO. 1101.02, SHEET 1 OF 9, (AS NEEDED) MAKE IMPROVEMENTS TO ROADWAYS SR 1300 (WISE STORE RD.), SR 1301 (VAUGHN MILL RD.) AND SR 1351 (VAUGHN CREEK RD.) AND REPLACE MARKINGS AND MARKERS OBLITERATED ALONG THE TEMPORARY OFF-SITE DETOUR ROUTE AS DIRECTED BY THE ENGINEER. (SEE SHEET TCP-3)

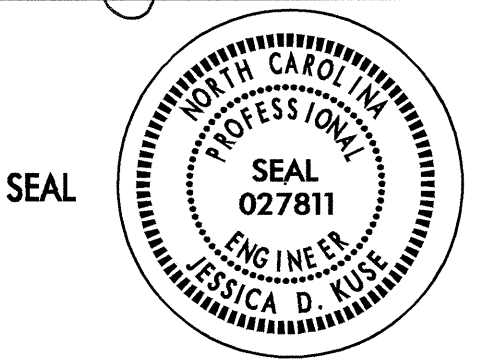

STEP 2 - USING ROADWAY STANDARD DRAWING NO. 1101.03, SHEET 1 OF 9, (AS NEEDED) AND SHEETS TCP-3 AND TCP-4 INSTALL ALL SIGNS AND DEVICES FOR THE CLOSURE OF -L- NC 35. ENSURE ALL OFF-SITE DETOUR SIGNS AND DEVICES ARE IN PLACE BY STATE FORCES AND CLOSE -L- PLACING TRAFFIC ALONG THE DETOUR ROUTE.

STEP 3 - REMOVE EXISTING STRUCTURE AND PAVEMENT, AND CONSTRUCT PROPOSED ROADWAY AND STRUCTURE UP TO AND INCLUDING THE FINAL SURFACE COURSE FROM STA. -L- STA. 21+25+/- TO STA. 30+75+/- . (SEE ROADWAY AND STRUCTURE PLANS)

- PLACE PROPOSED PAVEMENT MARKINGS AND MARKERS ON NC 35.

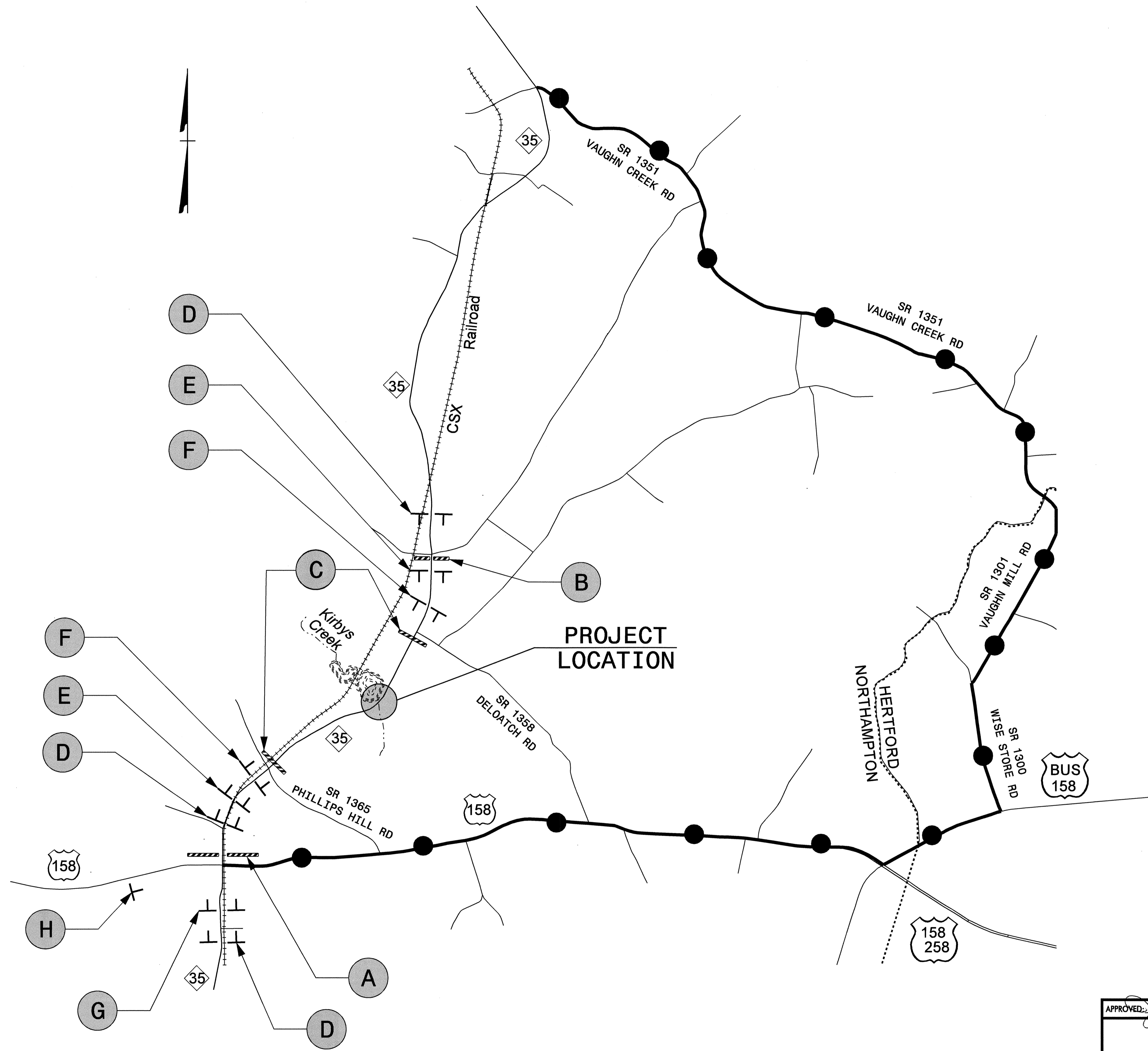
STEP 4 - REMOVE ALL TRAFFIC CONTROL DEVICES AND RE-OPEN NC 35 TO A 2-LANE, 2WAY TRAFFIC PATTERN.

04-DEC-2007 14:07 \\dot\dfsroot\0\proj\1\p\projects-b\4212\traffic\trafficcontrol\top\B-4212.TC.TCP-02.dgn
rmgarrrett AT WZ1222291

APPROVED: <i>Josica Kuse</i> DATE: 12/4/07		GENERAL NOTES / PHASING	
	SCALE: NONE		REVISIONS
	DATE: 08/07		
	DWG. BY: RMG		
	DESIGN BY: RMG		
	REVIEWED BY: JDK		

NOTES:

- 1) ALL SIGN LOCATIONS WILL BE VERIFIED BY THE ENGINEER PRIOR TO INSTALLATION.
- 2) REFER TO RSD 1101.03, SHEET 1 OF 9 FOR ADDITIONAL INFORMATION REGARDING SIGN PLACEMENT AND SPACING.
- 3) STATE FORCES WILL BE RESPONSIBLE FOR DETOUR SIGNING OFF THE PROJECT LIMITS.



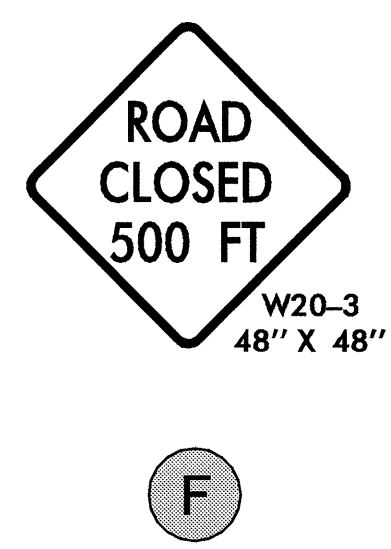
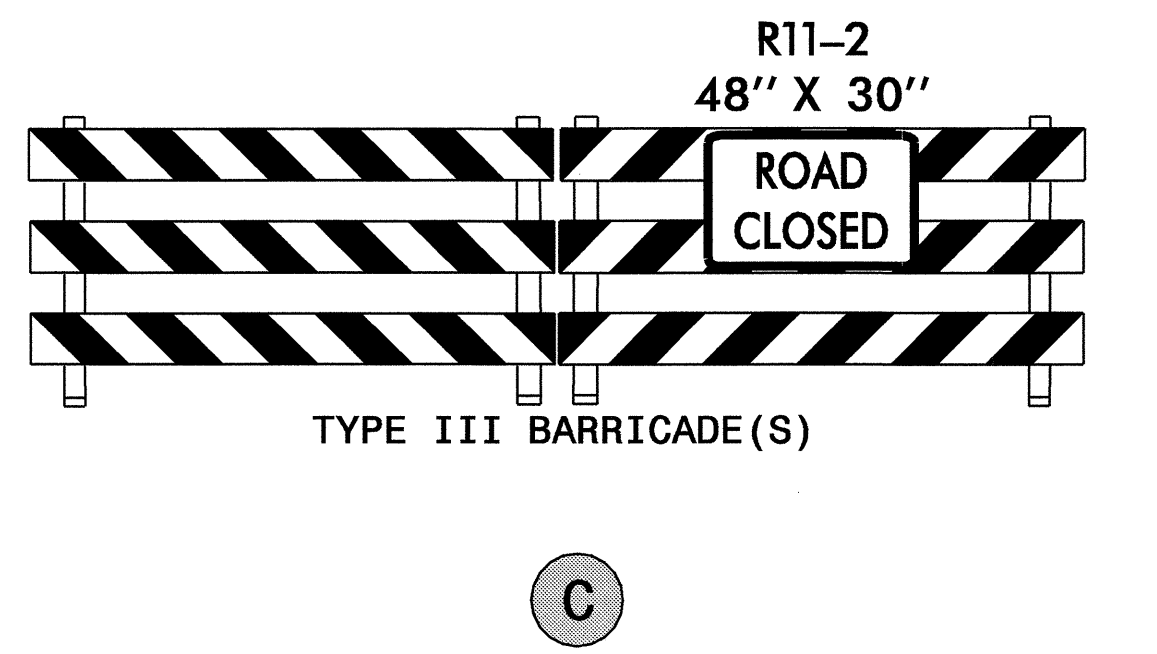
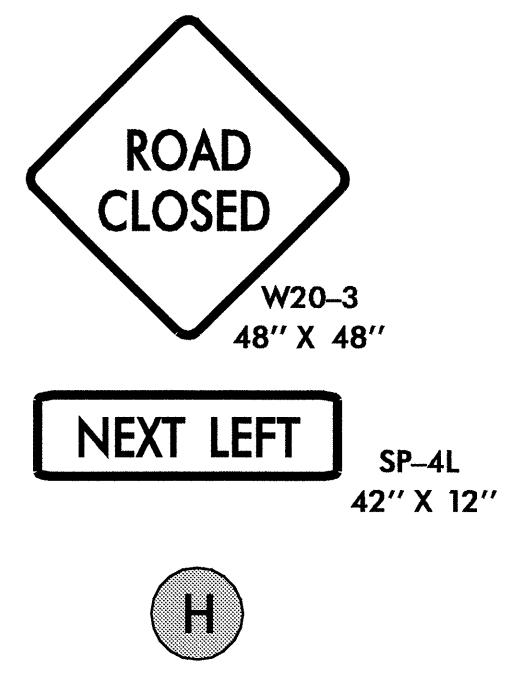
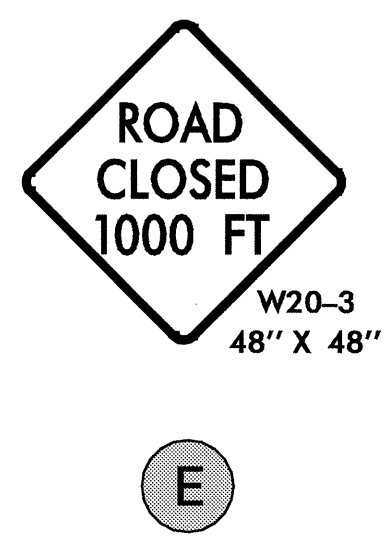
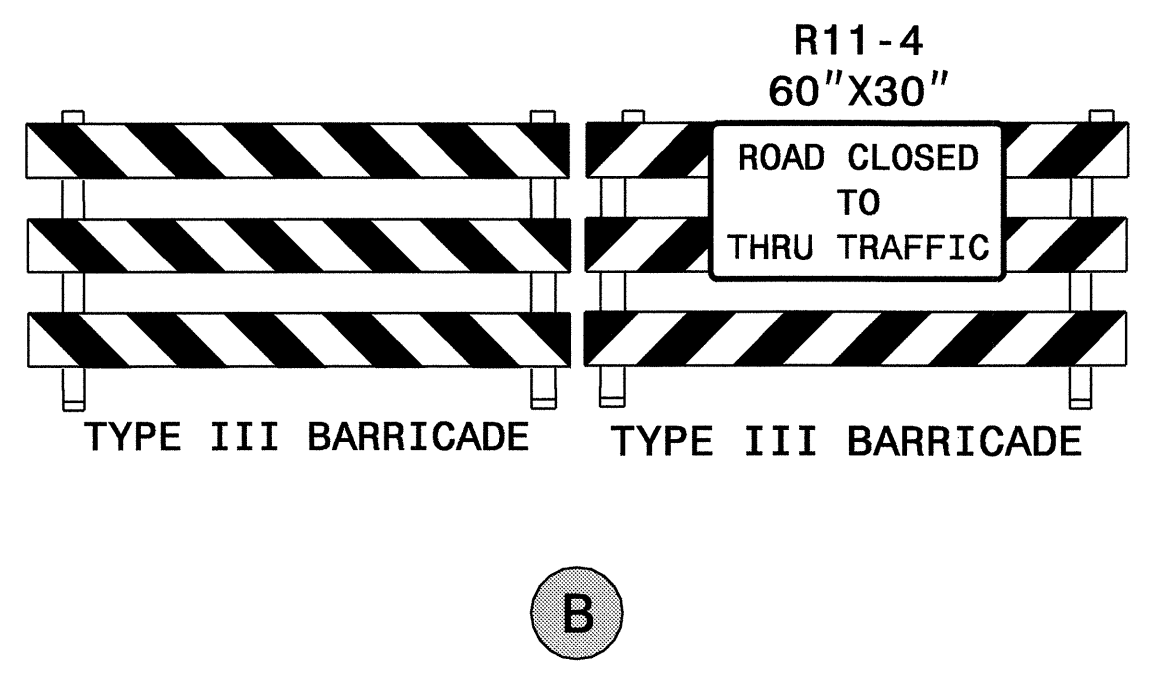
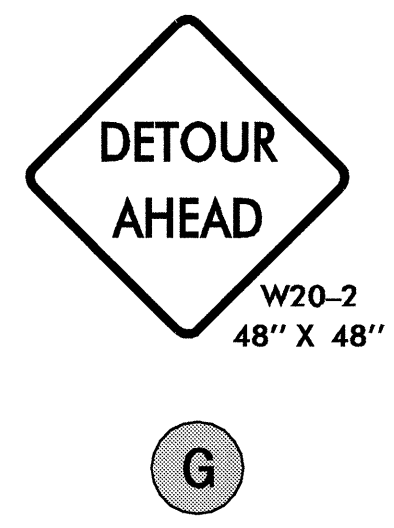
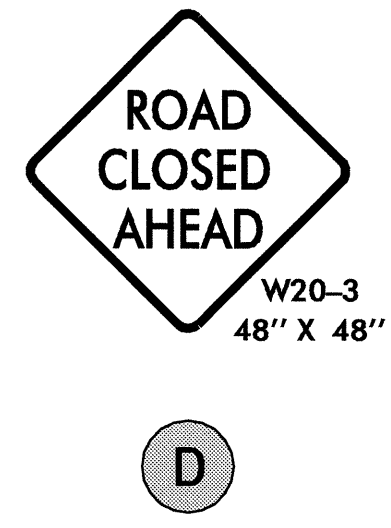
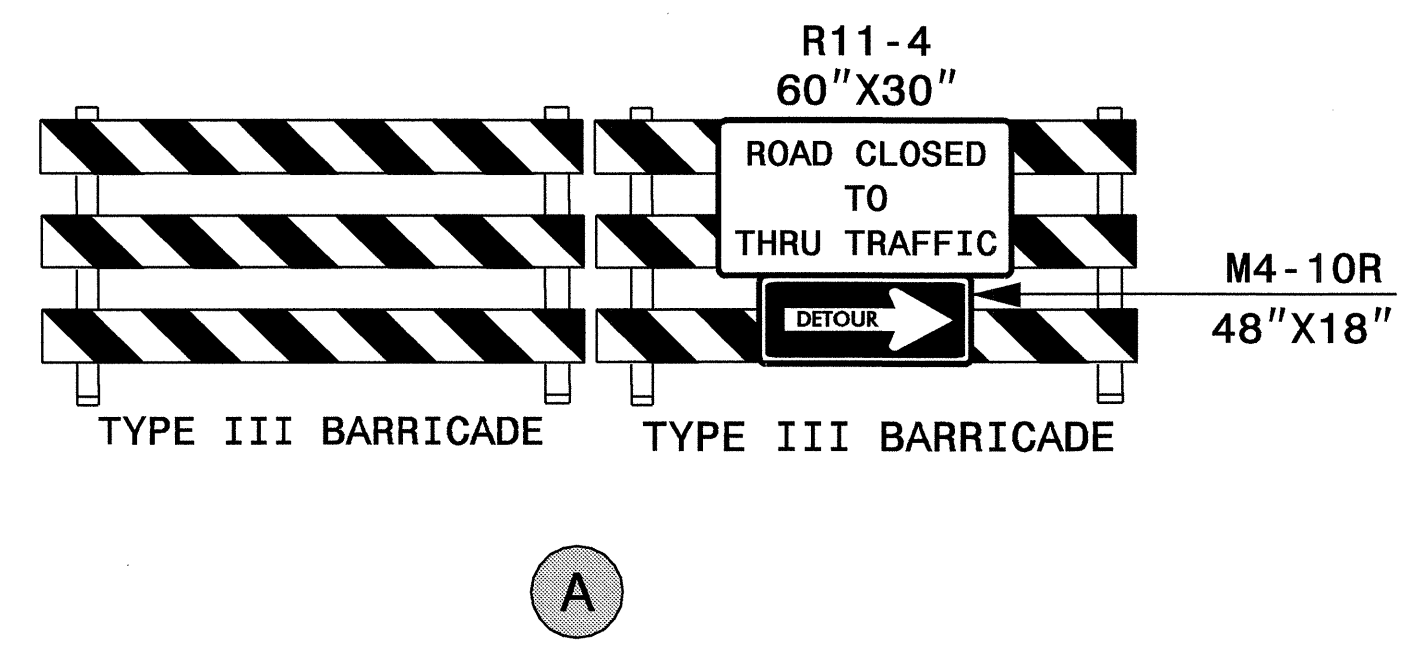
X SEE SHEET TCP-4 FOR SIGN DETAILS

LEGEND

●—●—●—● DETOUR ROUTE

APPROVED: <i>J. Kuse</i> DATE: 12/9/07		DETOUR SIGNING	
	SCALE: NONE		REVISIONS
	DATE: 08/07		
	DWG. BY: RMG		
	DESIGN BY: RMG		
REVIEWED BY: JDK			

04-DEC-2007 14:06
 \\dot\dfsroot\p\p\projects-b\4212\traffic\trafficcontrol\top\b-4212.fc_top_03.dgn
 rmgarrett AT WZTC222291



04-DEC-2007 11:10
 \\dot\dfsroot\proj\nc\trafficcontrol\top\B-4212.TC.TCP_04.dgn
 rmgarrett AT WZ1C22291

APPROVED: <i>Jessica Kuse</i> DATE: 07/10/07		DETOUR SIGNS / DEVICES DETAILS	
	SCALE: NONE		REVISIONS
	DATE: 08/07		
	DWG. BY: RMG		
	DESIGN BY: RMG		
REVIEWED BY: JDK			