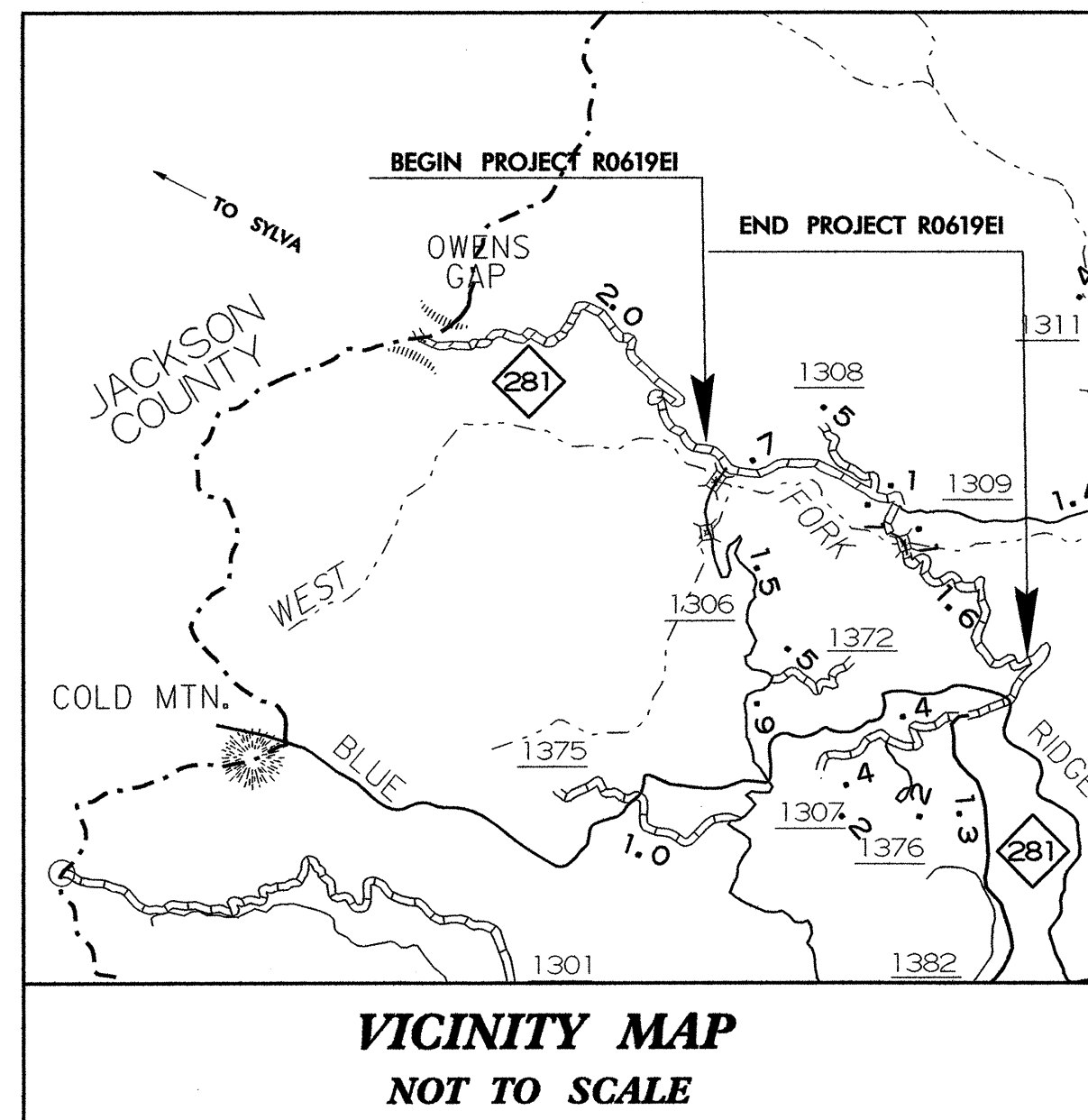


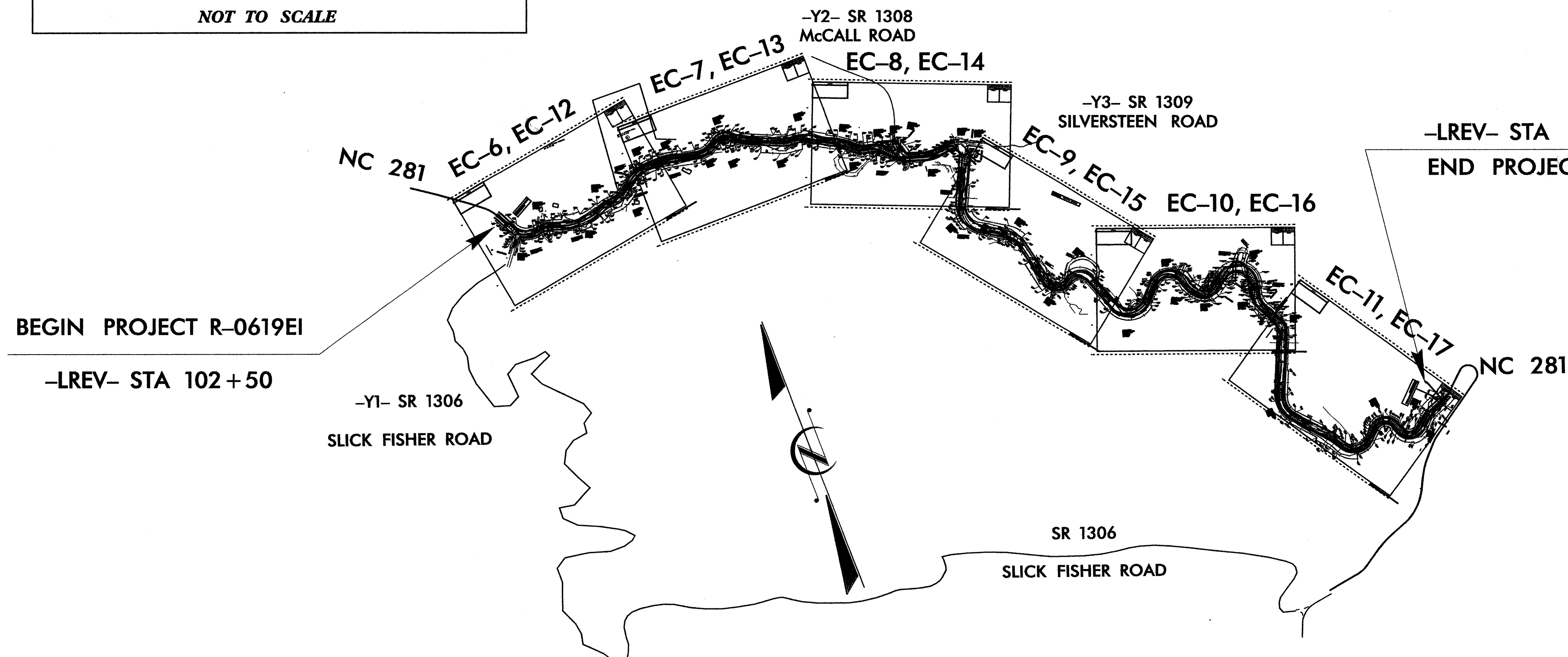
TIP PROJECT: R-0619EI

STATE OF NORTH CAROLINA
 DIVISION OF HIGHWAYS
 PLAN FOR PROPOSED
 HIGHWAY EROSION CONTROL
 TRANSYLVANIA COUNTY

STATE	STATE PROJECT REFERENCE NO.	SHEET NO.	TOTAL SHEETS
N.C.	R-0619EI	EC-1	
STATE PROJ. NO.	F.A. PROJ. NO.	DESCRIPTION	



LOCATION: STATION 102+50 TO STATION 215+00
 NC 281 FROM NEAR SLICK FISHER ROAD TO .56 MILE BEFORE EXISTING PAVEMENT



EROSION CONTROL MATTING IS TO BE PERFORMED ON ALL SLOPES OF 2:1 OR GREATER. CONTRACTOR SHALL MAINTAIN EROSION CONTROL DEVICES REMAINING WITHIN PROJECT BOUNDARIES FROM PREVIOUS CONTRACT.

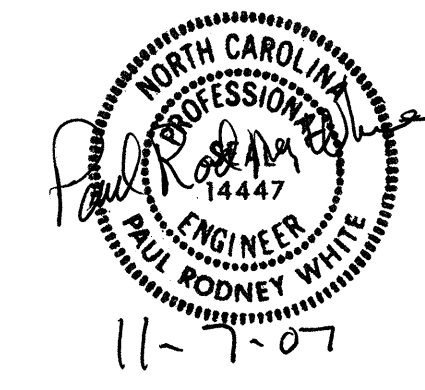
EROSION AND SEDIMENT CONTROL MEASURES

Std. #	Description	Symbol
	Streambank Reforestation.....	
1630.03	Temporary Silt Ditch.....	
1630.05	Temporary Diversion.....	
1605.01	Temporary Silt Fence.....	
1606.01	Special Sediment Control Fence.....	
1622.01	Temporary Berms and Slope Drains.....	
1630.01	Riser Basin.....	
1630.02	Silt Basin Type B.....	
1633.01	Temporary Rock Silt Check Type-A.....	
	Temporary Rock Silt Check Type-B.....	
1634.01	Temporary Rock Sediment Dam Type-A.....	
1634.02	Temporary Rock Sediment Dam Type-B.....	
1635.01	Rock Pipe Inlet Sediment Trap Type-A.....	
1635.02	Rock Pipe Inlet Sediment Trap Type-B.....	
1630.04	Stilling Basin.....	
	Rock Inlet Sediment Trap:	
1632.01	Type A.....	
1632.02	Type B.....	
1632.03	Type C.....	
	Skimmer Basin.....	
	Tiered Skimmer Basin.....	

THIS PROJECT CONTAINS EROSION CONTROL PLANS FOR CLEARING AND GRUBBING PHASE OF CONSTRUCTION.

THIS PROJECT HAS BEEN DESIGNED TO SENSITIVE WATERSHED STANDARDS.

ENVIRONMENTALLY SENSITIVE AREA(S) EXIST ON THIS PROJECT
 Refer To E. C. Special Provisions for Special Considerations.



GRAPHIC SCALE

0

PLANS

0

PROFILE (HORIZONTAL)

0

PROFILE (VERTICAL)

DIVISION 14
 DIVISION DESIGN CONSTRUCT
 DIVISION OF HIGHWAYS
 STATE OF NORTH CAROLINA

Prepared in the Office of:
DIVISION 14 DESIGN CONSTRUCT UNIT
 253 Webster Road
 Sylva, NC 28779

2006 STANDARD SPECIFICATIONS

Roadway Standard Drawings

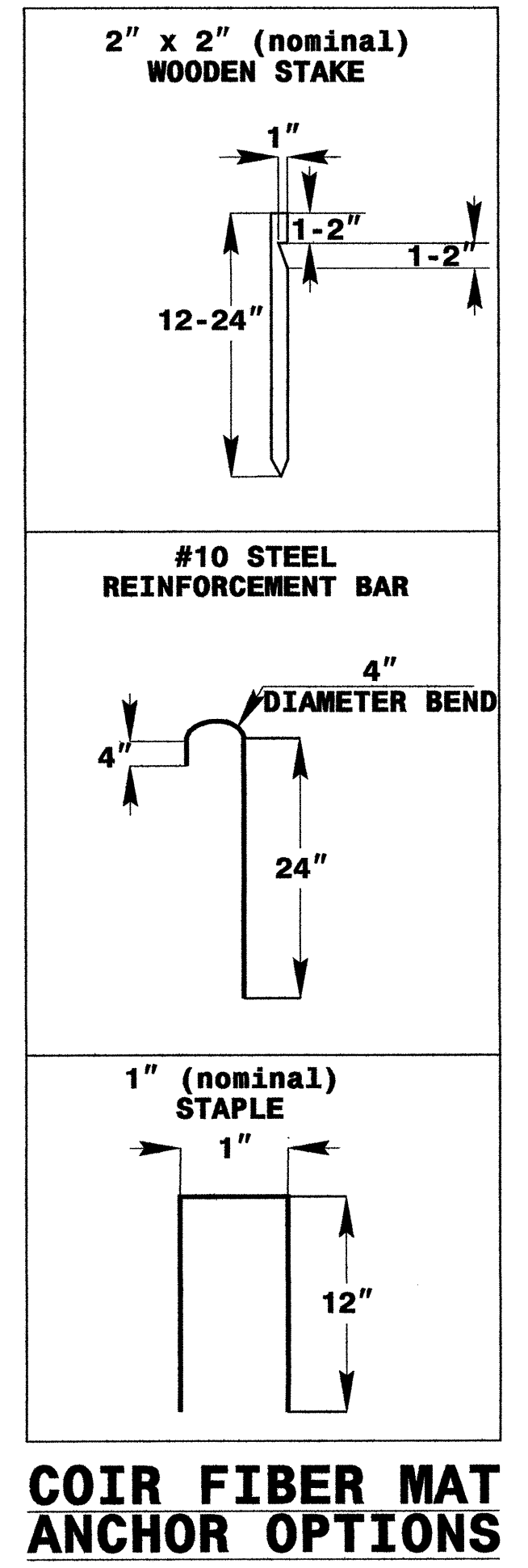
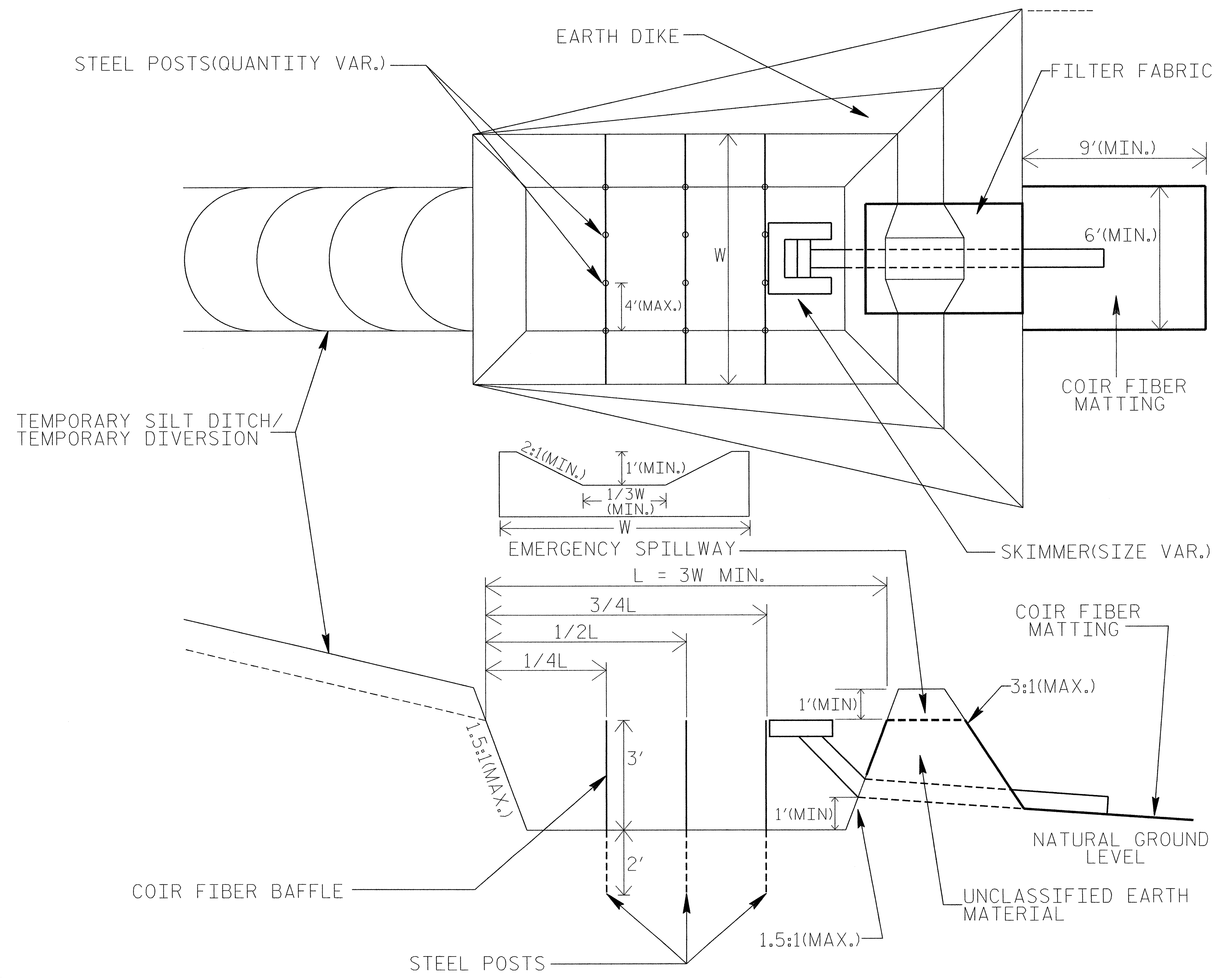
The following roadway english standards as appear in "Roadway Standard Drawings"- Roadway Design Unit - N. C. Department of Transportation - Raleigh, N. C., dated July 18, 2006 and the latest revision thereto are applicable to this project and by reference hereby are considered a part of these plans.

- 1605.01 Temporary Silt Fence
- 1606.01 Special Sediment Control Fence
- 1622.01 Temporary Berms and Slope Drains
- 1630.02 Silt Basin Type B
- 1630.03 Temporary Silt Ditch
- 1630.05 Temporary Diversion
- 1633.01 Temporary Rock Silt Check Type A
- 1633.02 Temporary Rock Silt Check Type B
- 1635.02 Rock Pipe Inlet Sediment Trap Type B

11-7-07
 0619-25-OCT-2007 08:20
 P:\0619\0619-25\0619-25-001\0619-25-001.dgn

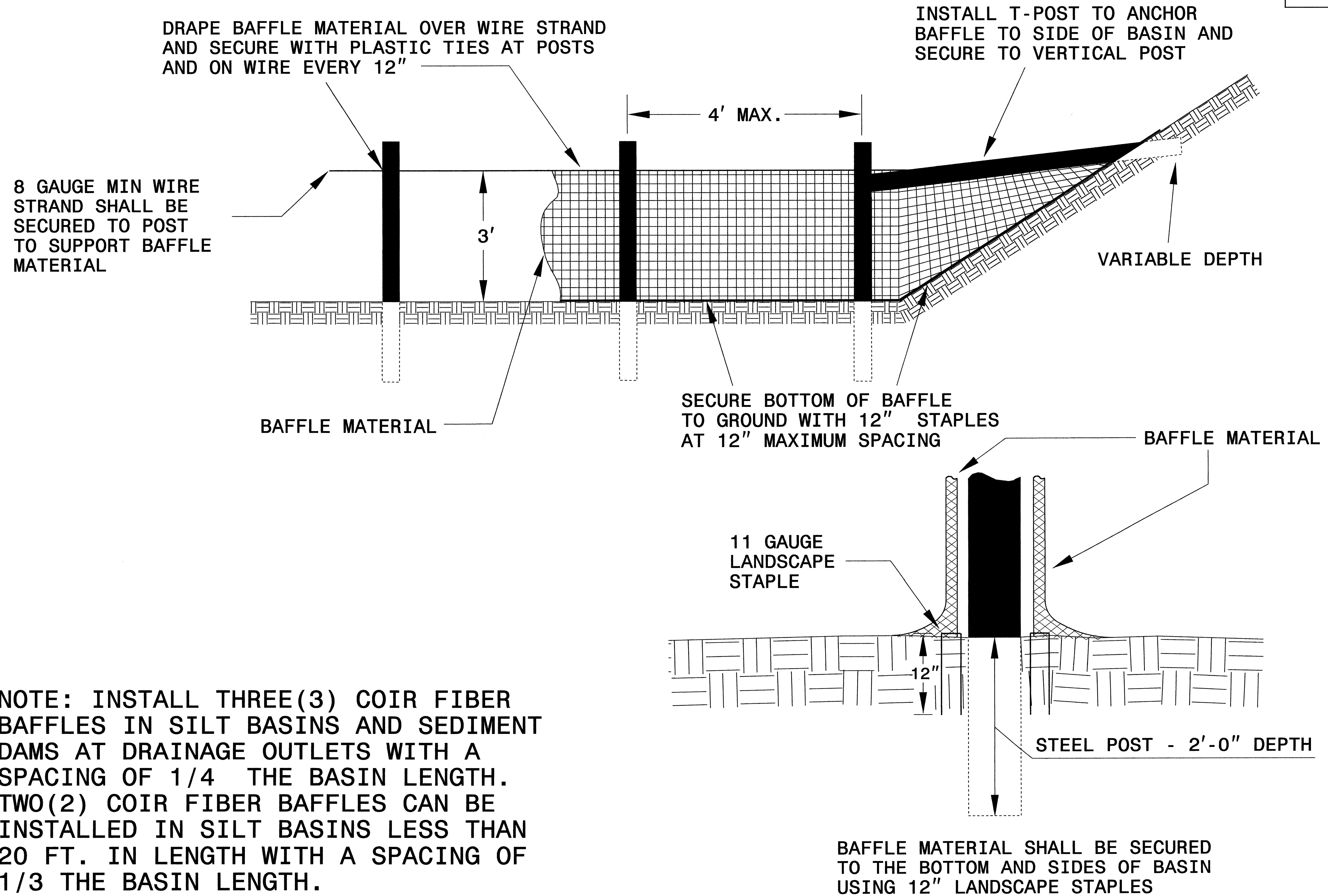
SKIMMER BASIN WITH BAFFLES DETAIL

PROJECT REFERENCE NO. R-0619E1	SHEET NO. EC-2
ROADWAY DESIGN ENGINEER	HYDRAULICS ENGINEER



PROJECT REFERENCE NO. R-06/9E1	SHEET NO. EC-2-A
R/W SHEET NO.	
ROADWAY DESIGN ENGINEER	HYDRAULICS ENGINEER

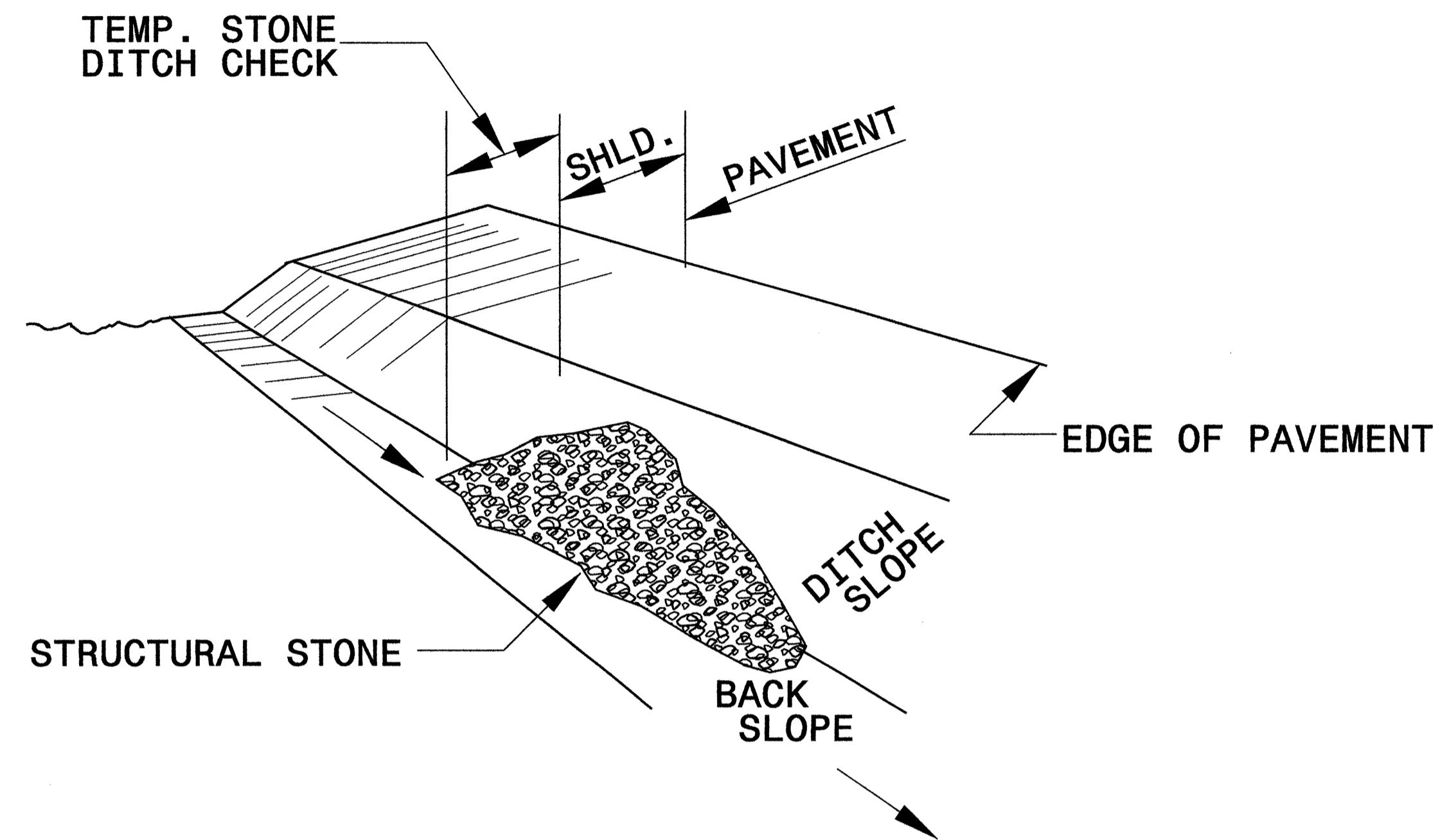
COIR FIBER BAFFLE DETAIL



NOTE: INSTALL THREE (3) COIR FIBER BAFFLES IN SILT BASINS AND SEDIMENT DAMS AT DRAINAGE OUTLETS WITH A SPACING OF 1/4 THE BASIN LENGTH. TWO (2) COIR FIBER BAFFLES CAN BE INSTALLED IN SILT BASINS LESS THAN 20 FT. IN LENGTH WITH A SPACING OF 1/3 THE BASIN LENGTH.

PROJECT REFERENCE NO. R-0619E1	SHEET NO. EC-2B
RW SHEET NO.	
ROADWAY DESIGN ENGINEER	HYDRAULICS ENGINEER

TEMPORARY ROCK SILT CHECK TYPE 'B' DETAIL

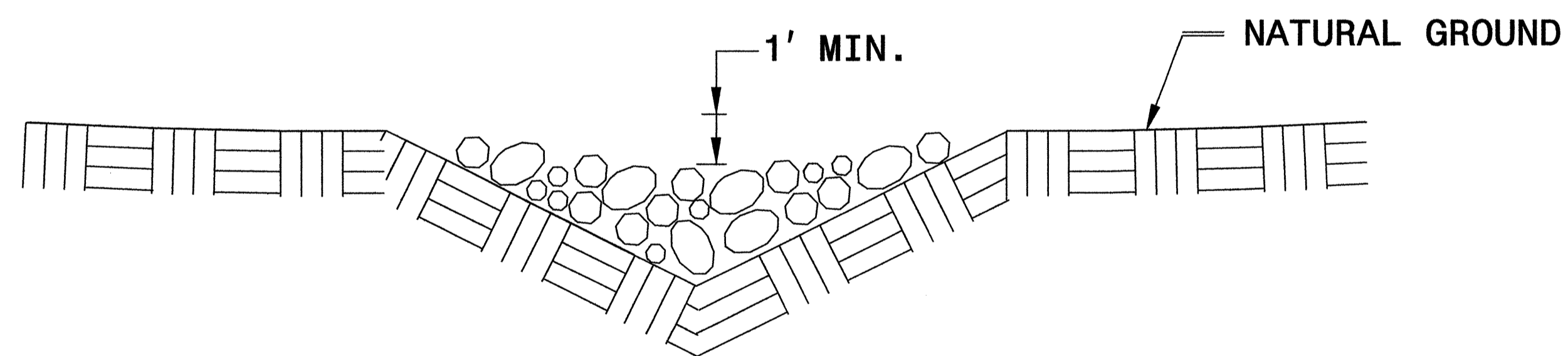


ISOMETRIC VIEW

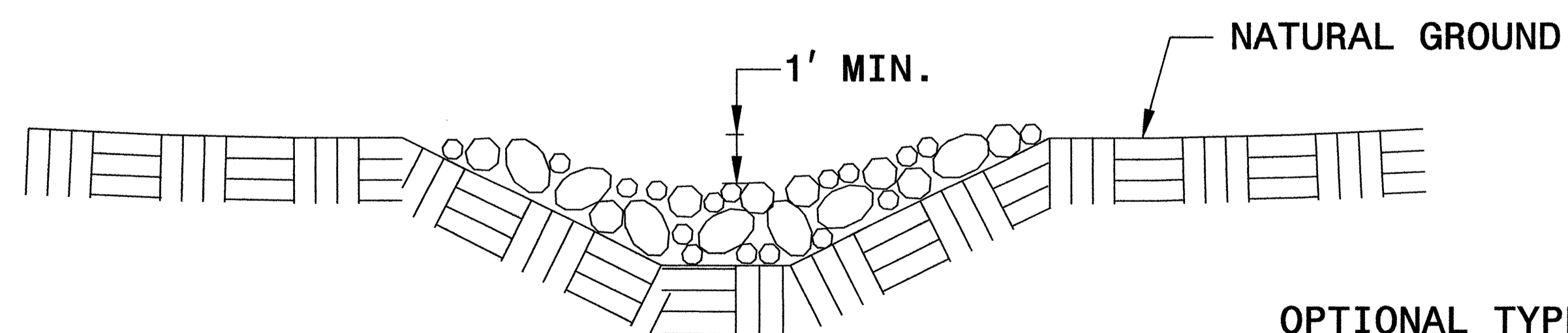
NOTES:

USE CLASS 'B' EROSION CONTROL STONE FOR STRUCTURAL STONE.

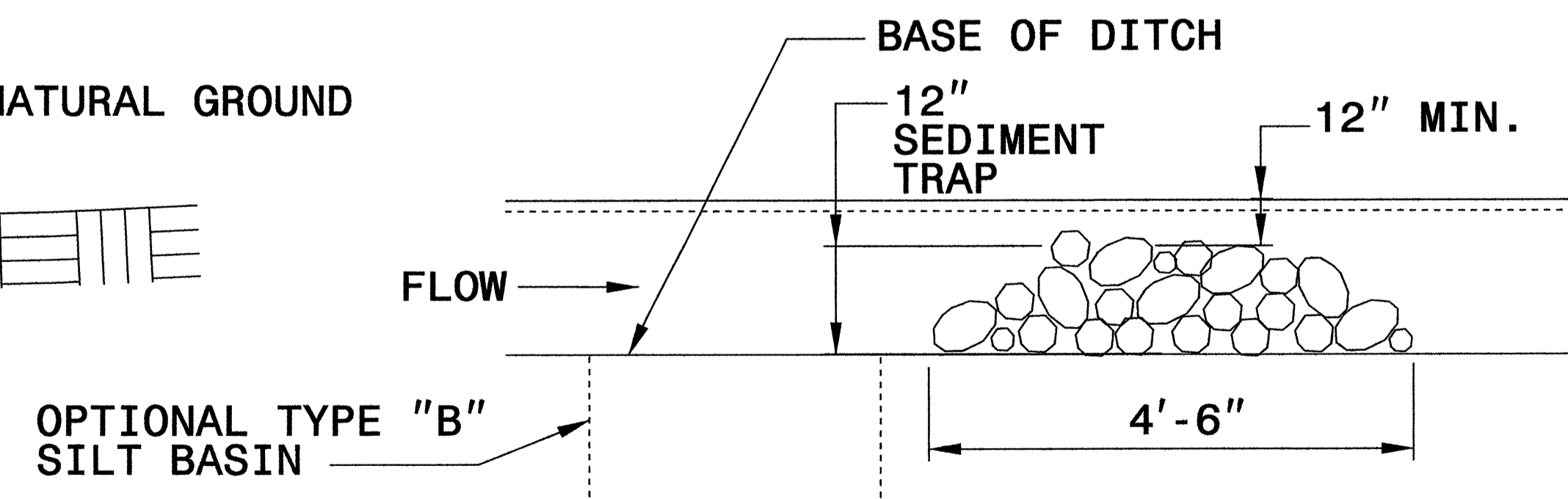
THE ENGINEER MAY DIRECT THE OPTION OF CLASS "A" STONE FOR SITES HAVING LESS THAN ONE (1) ACRE DRAINAGE AREA AND A DITCH GRADE LESS THAN 3%.



**CROSS SECTION
VEE DITCH**




**CROSS SECTION
TRAPEZOIDAL DITCH**



ELEVATION VIEW

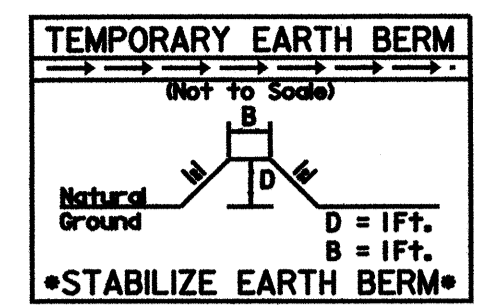
050197

REVISIONS

 ENVIRONMENTALLY SENSITIVE AREA
SEE PROJECT SPECIAL PROVISIONS

CLEARING AND GRUBBING
EROSION CONTROL FOR
CONSTRUCTION SHEET 4

NOTE:
PLACE TEMPORARY ROCK SEDIMENT DAMS TYPE - B
AND TEMPORARY ROCK SILT CHECKS TYPE - A AT
DRAINAGE OUTLETS.



PROJECT REFERENCE NO. R-0619E1	SHEET NO. EC-4 (C&G)
RW SHEET NO.	
ROADWAY DESIGN PAUL RODNEY WHITE 14447	HYDRAULICS PAUL RODNEY WHITE 14447
12-27-07	12-27-07

CLASS "A" STONE LINED DITCHES AND FILTER FABRIC

LINE	FROM STATION	TO STATION	LOCATION	CLASS A STONE TONS	FILTER FABRIC SY
LREV	115+60	116+02	L	8	28
LREV	115+90	116+33	R	9	29
LREV	116+23	116+54	L	6	21
LREV	116+70	117+11	R	8	28
LREV	116+88	117+15	L	5	18

20' x 7' x 3'
2.0 inch Skimmer
with .625 inch
Orifice Diameter
4.0 ft. weir
116+00 LT

PI Sta 116+31.77
 $\Delta = 40' 39' 35.2''$ (RT)
 $D = 16' 22' 06.7''$
 $L = 248.40'$
 $T = 129.69'$
 $R = 350.04'$

PROPOSED 1.5' BASE DITCH
STATIONS 114+75 LEFT TO 115+65 LEFT
SEE TYPICAL SECTIONS FOR DETAILS

REMOVE FENCE FROM STA. 113+75 TO STA. 116+90.
CONSTRUCT WOODEN POSTS AND 2 STRAND BARBED
WIRE FENCE WITH WOODEN POSTS TEMPORARILY
ON THE DRAINAGE DITCH. REMOVE AND RESET FENCE
AFTER CONSTRUCTION. REMOVE AND RESET FENCE
1' INSIDE OF R/W FROM STA. 113+75 TO STA. 116+90.

18' x 4' x 3'
2.0 inch Skimmer
with 0.5 inch
Orifice Diameter
4.0 ft. weir
103+50 LT

30 x 10 x 3
2.0 inch Skimmer
with 1.0 inch
Orifice Diameter
6.0 ft. weir
106+50 LT

24 x 8 x 3
2.0 inch Skimmer
with .75 inch
Orifice Diameter
4.0 ft. weir
106+60 LT

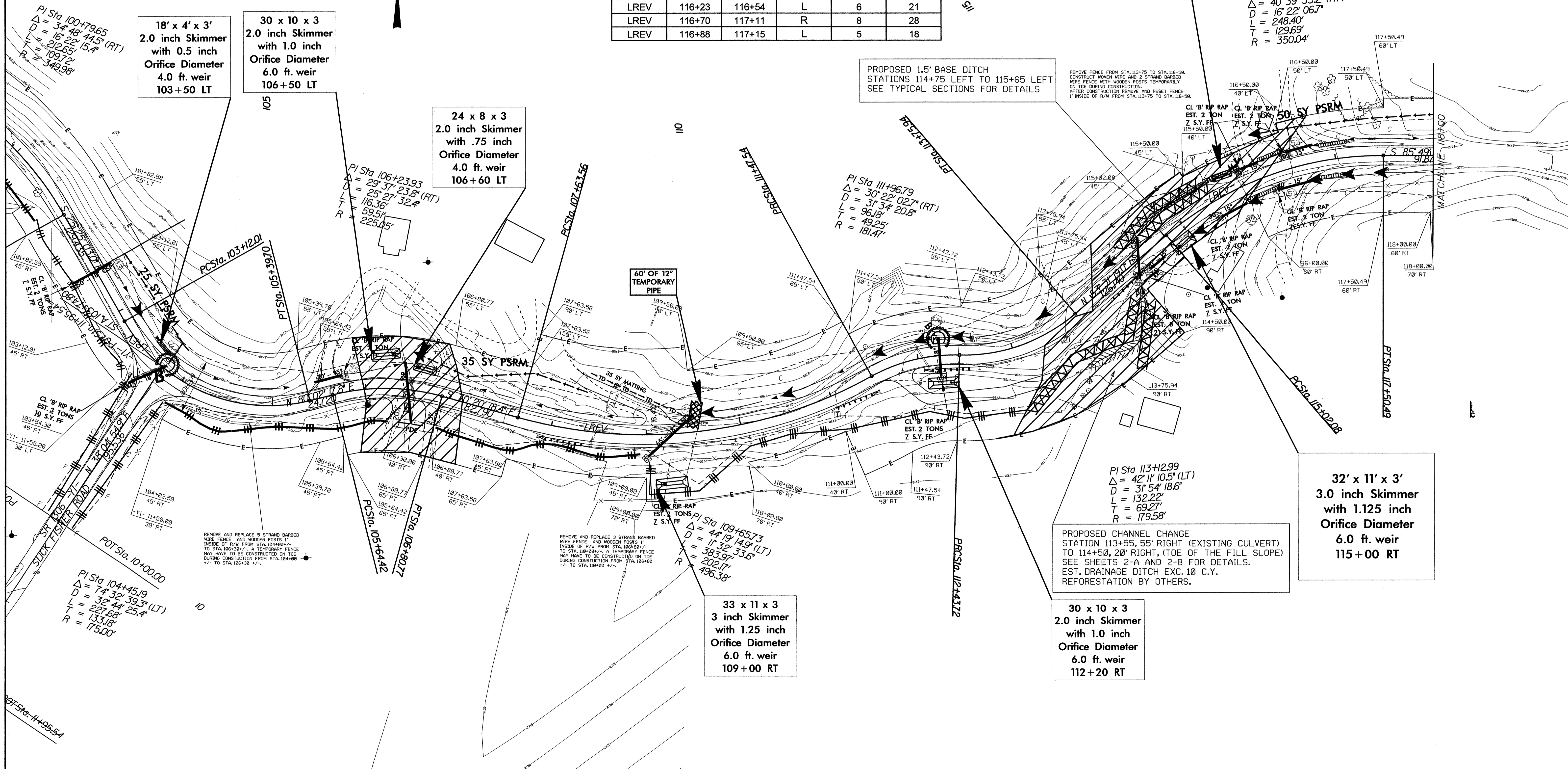
60' OF 12"
TEMPORARY
PIPE

32' x 11' x 3'
3.0 inch Skimmer
with 1.125 inch
Orifice Diameter
6.0 ft. weir
115+00 RT

PROPOSED CHANNEL CHANGE
STATION 113+55, 55' RIGHT (EXISTING CULVERT)
TO 114+50, 20' RIGHT, (TOE OF THE FILL SLOPE)
SEE SHEETS 2-A AND 2-B FOR DETAILS.
EST. DRAINAGE DITCH EXC. 10 C.Y.
REFORESTATION BY OTHERS.

33 x 11 x 3
3 inch Skimmer
with 1.25 inch
Orifice Diameter
6.0 ft. weir
109+00 RT

30 x 10 x 3
2.0 inch Skimmer
with 1.0 inch
Orifice Diameter
6.0 ft. weir
112+20 RT



CLEARING AND GRUBBING EROSION CONTROL FOR CONSTRUCTION SHEET 6

NOTE: PLACE TEMPORARY ROCK SEDIMENT DAMS TYPE - B AND TEMPORARY ROCK SILT CHECKS TYPE - A AT DRAINAGE OUTLETS.



14' x 5' x 3'
2.0 inch Skimmer
with 0.5 inch
Orifice Diameter
4 ft. weir
144+80 LT

24' x 8' x 3'
2.0 inch Skimmer
with .75 inch
Orifice Diameter
4.0 ft. weir
144+50 LT

30' x 10' x 3'
2.0 inch Skimmer
with 1.0 inch
Orifice Diameter
4.0 ft. weir
137+50 LT

21' x 7' x 3'
2.0 inch Skimmer
with .75 inch
Orifice Diameter
4.0 ft. weir
137+70 LT

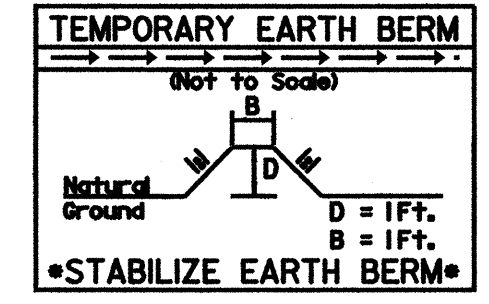
30' x 6' x 3'
2.0 inch Skimmer
with .75 inch
Orifice Diameter
4.0 ft. weir
147+80 LT

29' x 6' x 3'
2.0 inch Skimmer
with .75 inch
Orifice Diameter
4.0 ft. weir
150+80 LT

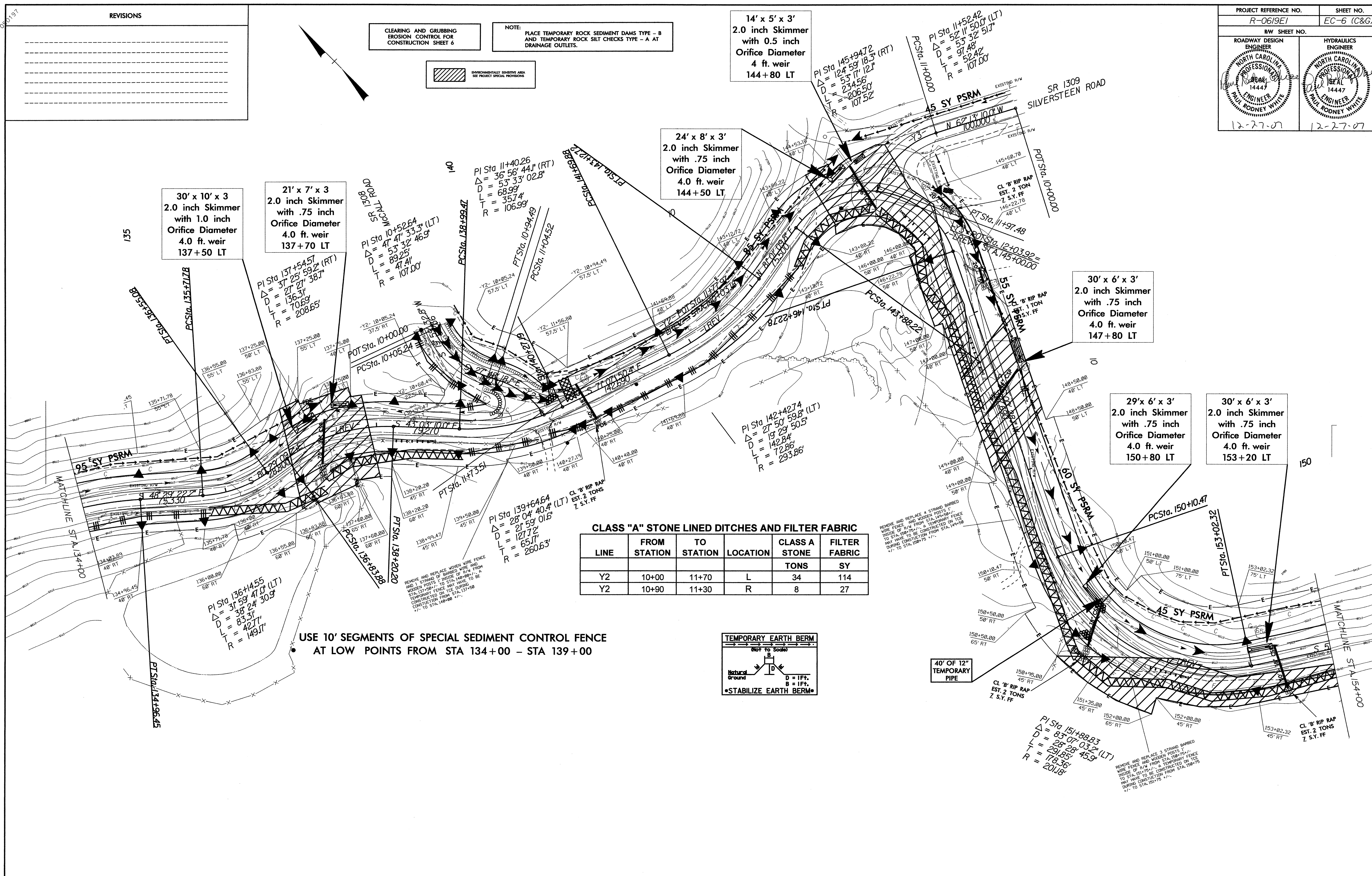
30' x 6' x 3'
2.0 inch Skimmer
with .75 inch
Orifice Diameter
4.0 ft. weir
153+20 LT

CLASS "A" STONE LINED DITCHES AND FILTER FABRIC

LINE	FROM STATION	TO STATION	LOCATION	CLASS A STONE	FILTER FABRIC
Y2	10+00	11+70	L	34	114
Y2	10+90	11+30	R	8	27



USE 10' SEGMENTS OF SPECIAL SEDIMENT CONTROL FENCE AT LOW POINTS FROM STA 134+00 - STA 139+00



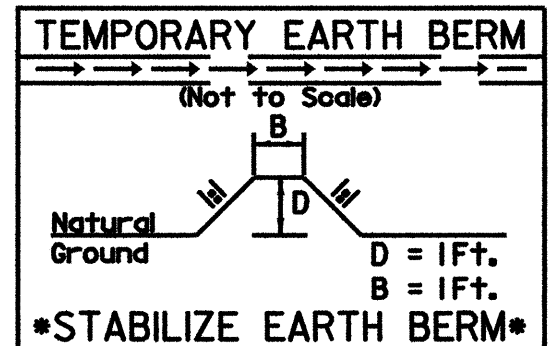
00197

REVISIONS

CLEARING AND GRUBBING
EROSION CONTROL FOR
CONSTRUCTION SHEET 9

NOTE: PLACE TEMPORARY ROCK SEDIMENT DAMS TYPE - B
AND TEMPORARY ROCK SILT CHECKS TYPE - A AT
DRAINAGE OUTLETS.

ENVIRONMENTALLY SENSITIVE AREA
SEE PROJECT SPECIAL PROVISIONS



SEE STD.DRWG.876.02,876.03,AND 876.04 FOR PIPE OUTLET PROTECTION ON FILL SLOPES

END PROJECT R-0619E1
STATION 215+00

PROJECT REFERENCE NO. R-0619E1	SHEET NO. EC-9 C&G
RW SHEET NO.	
ROADWAY DESIGN ENGINEER NORTH CAROLINA PROFESSIONAL 14447 PAUL RODNEY WHITE	HYDRAULICS ENGINEER NORTH CAROLINA PROFESSIONAL 14447 PAUL RODNEY WHITE
12-27-07	12-27-07

CLASS "A" STONE LINED DITCHES AND FILTER FABRIC

LINE	FROM STATION	TO STATION	LOCATION	CLASS A STONE TONS	FILTER FABRIC SY
LREV	193+00	199+88	L	138	459
LREV	196+14	202+56	R	129	428
LREV	204+26	204+87	R	12	41
LREV	207+03	209+20	R	44	145
LREV	210+59	211+66	R	22	72
LREV	211+00	211+88	L	18	59
LREV	213+66	215+00	R	27	90

27' x 6' x 3'
2.0 inch Skimmer
with .75 inch
Orifice Diameter
4.0 ft. weir
213+50 RT

21' x 7' x 3'
2.0 inch Skimmer
with .75 inch
Orifice Diameter
4.0 ft. weir
213+50 LT

19' x 6' x 3'
2.0 inch Skimmer
with .75 inch
Orifice Diameter
4.0 ft. weir
211+00 LT

22' x 5' x 3'
2.0 inch Skimmer
with .75 inch
Orifice Diameter
4.0 ft. weir
193+20 LT

32' x 6' x 3'
2.0 inch Skimmer
with .75 inch
Orifice Diameter
4.0 ft. weir
207+10 RT

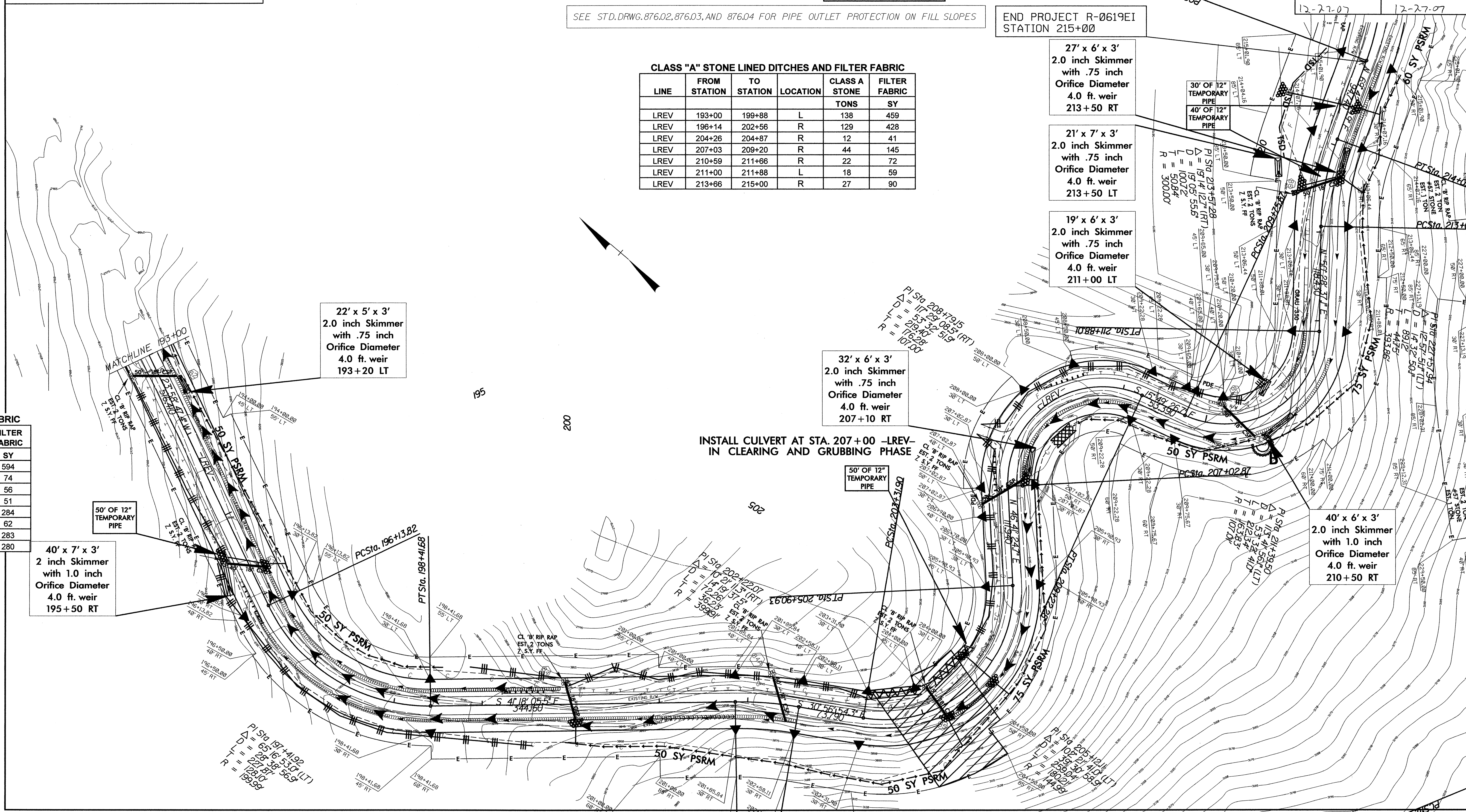
40' x 6' x 3'
2.0 inch Skimmer
with 1.0 inch
Orifice Diameter
4.0 ft. weir
210+50 RT

40' x 7' x 3'
2 inch Skimmer
with 1.0 inch
Orifice Diameter
4.0 ft. weir
195+50 RT

INSTALL CULVERT AT STA. 207+00 -LREV-
IN CLEARING AND GRUBBING PHASE

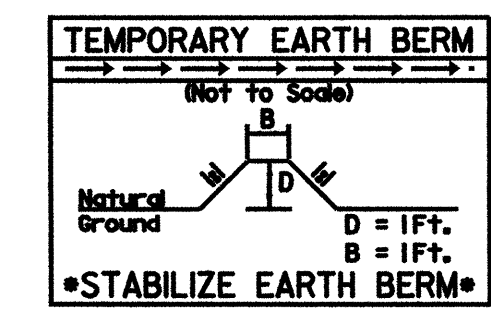
FILTER FABRIC

FILTER FABRIC
SY
594
74
56
51
284
62
283
280



REVISIONS

SEE STD.DRWG.876.02,876.03,AND 876.04 FOR PIPE OUTLET PROTECTION ON FILL SLOPES



PROJECT REFERENCE NO. R-0619E1	SHEET NO. EC-10
RW SHEET NO.	
ROADWAY DESIGN NORTH CAROLINA PROFESSIONAL ENGINEER PAUL RODNEY WHITE 14447 12-27-07	HYDRAULICS NORTH CAROLINA PROFESSIONAL ENGINEER PAUL RODNEY WHITE 14447 12-27-07

CLASS "A" STONE LINED DITCHES AND FILTER FABRIC

LINE	FROM STATION	TO STATION	LOCATION	CLASS A STONE TONS	FILTER FABRIC SY
LREV	115+60	116+02	L	8	28
LREV	115+90	116+33	R	9	29
LREV	116+23	116+54	L	6	21
LREV	116+70	117+11	R	8	28
LREV	116+88	117+15	L	5	18

20' x 7' x 3'
 2.0 inch Skimmer
 with .625 inch
 Orifice Diameter
 4.0 ft. weir
 116+00 LT

PI Sta 116+31.77
 $\Delta = 40' 39' 35.2''$ (RT)
 $D = 16' 22' 06.7''$
 $L = 248.40'$
 $T = 129.69'$
 $R = 350.04'$

PROPOSED 1.5' BASE DITCH
 STATIONS 114+75 LEFT TO 115+65 LEFT
 SEE TYPICAL SECTIONS FOR DETAILS

18' x 4' x 3'
 2.0 inch Skimmer
 with 0.5 inch
 Orifice Diameter
 4.0 ft. weir
 103+50 LT

30 x 10 x 3
 2.0 inch Skimmer
 with 1.0 inch
 Orifice Diameter
 6.0 ft. weir
 106+50 LT

24 x 8 x 3
 2.0 inch Skimmer
 with .75 inch
 Orifice Diameter
 4.0 ft. weir
 106+60 LT

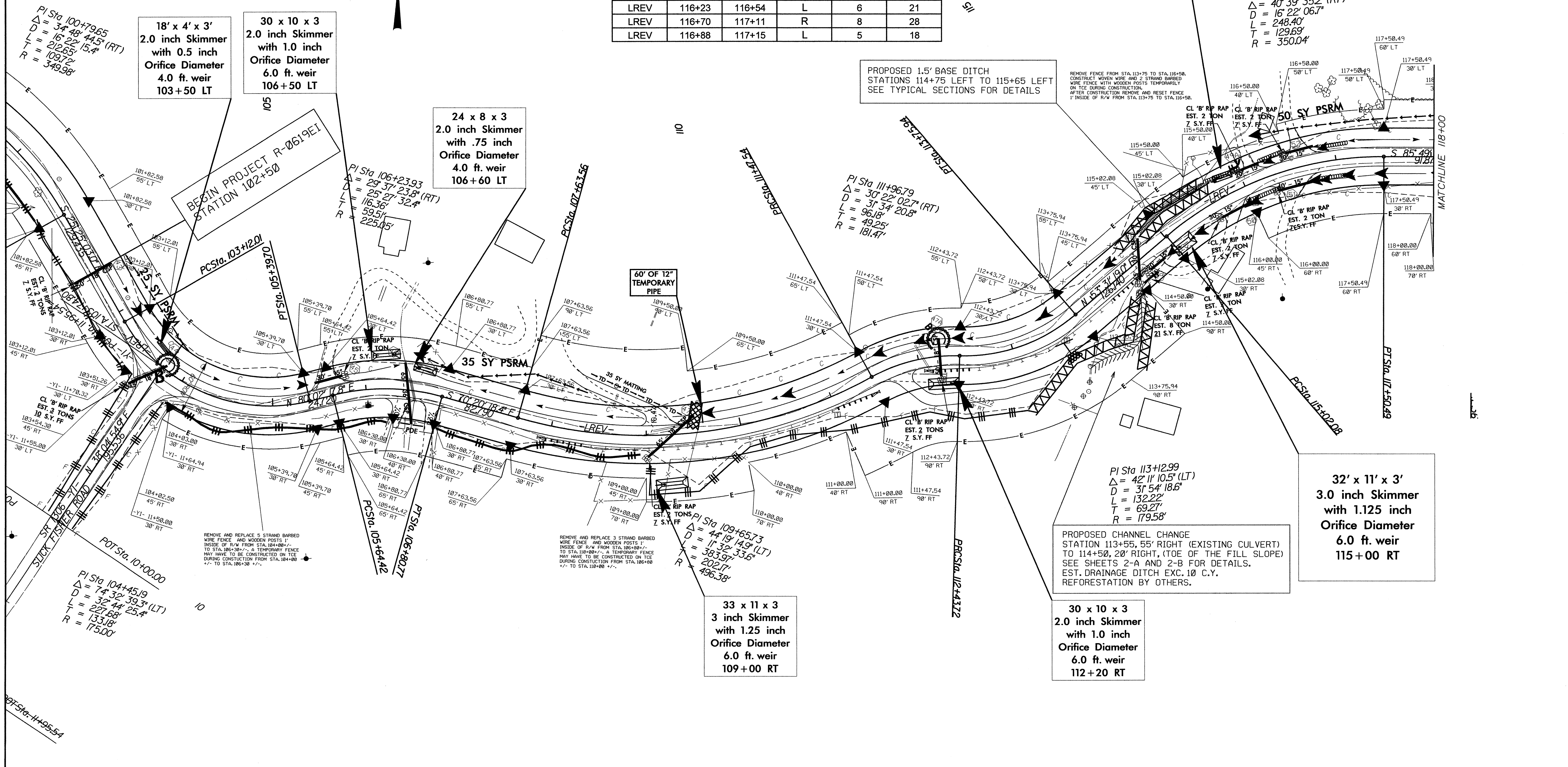
60' OF 12"
 TEMPORARY
 PIPE

PI Sta 113+12.99
 $\Delta = 42' 11' 10.5''$ (LT)
 $D = 31' 54' 18.6''$
 $L = 132.22'$
 $T = 69.27'$
 $R = 179.58'$

32' x 11' x 3'
 3.0 inch Skimmer
 with 1.125 inch
 Orifice Diameter
 6.0 ft. weir
 115+00 RT

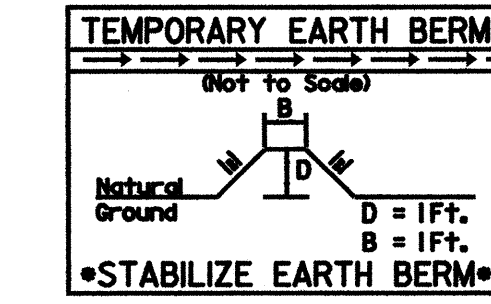
33 x 11 x 3
 3 inch Skimmer
 with 1.25 inch
 Orifice Diameter
 6.0 ft. weir
 109+00 RT

30 x 10 x 3
 2.0 inch Skimmer
 with 1.0 inch
 Orifice Diameter
 6.0 ft. weir
 112+20 RT



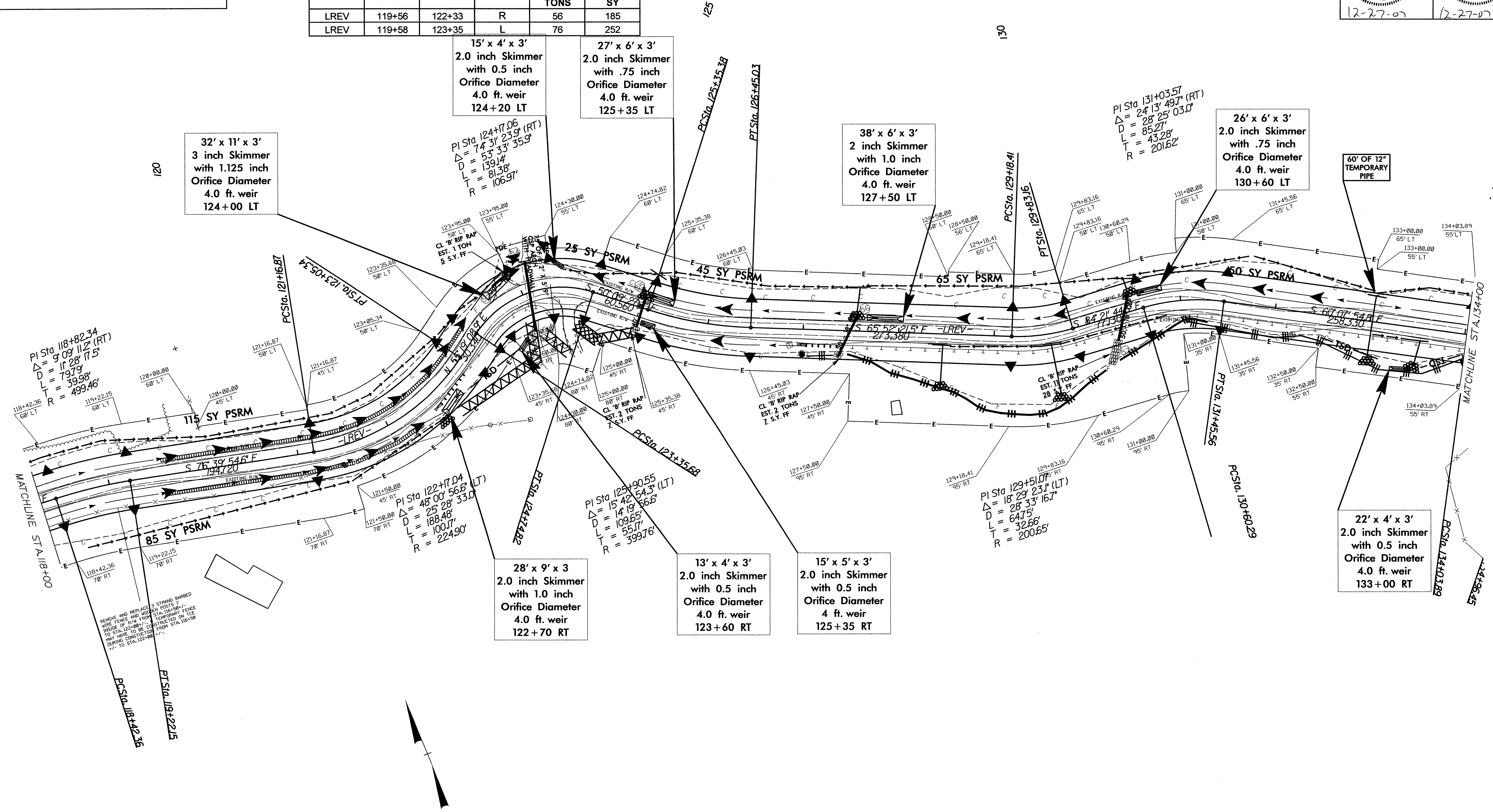
REVISIONS

PROJECT REFERENCE NO. R-0619E1	SHEET NO. EC-11
RW SHEET NO.	
ROADWAY DESIGN ENGINEER NORTH CAROLINA PROFESSIONAL ENGINEER PAUL RODNEY WHITE 14447 12-27-07	HYDRAULICS ENGINEER NORTH CAROLINA PROFESSIONAL ENGINEER PAUL RODNEY WHITE 14447 12-27-07



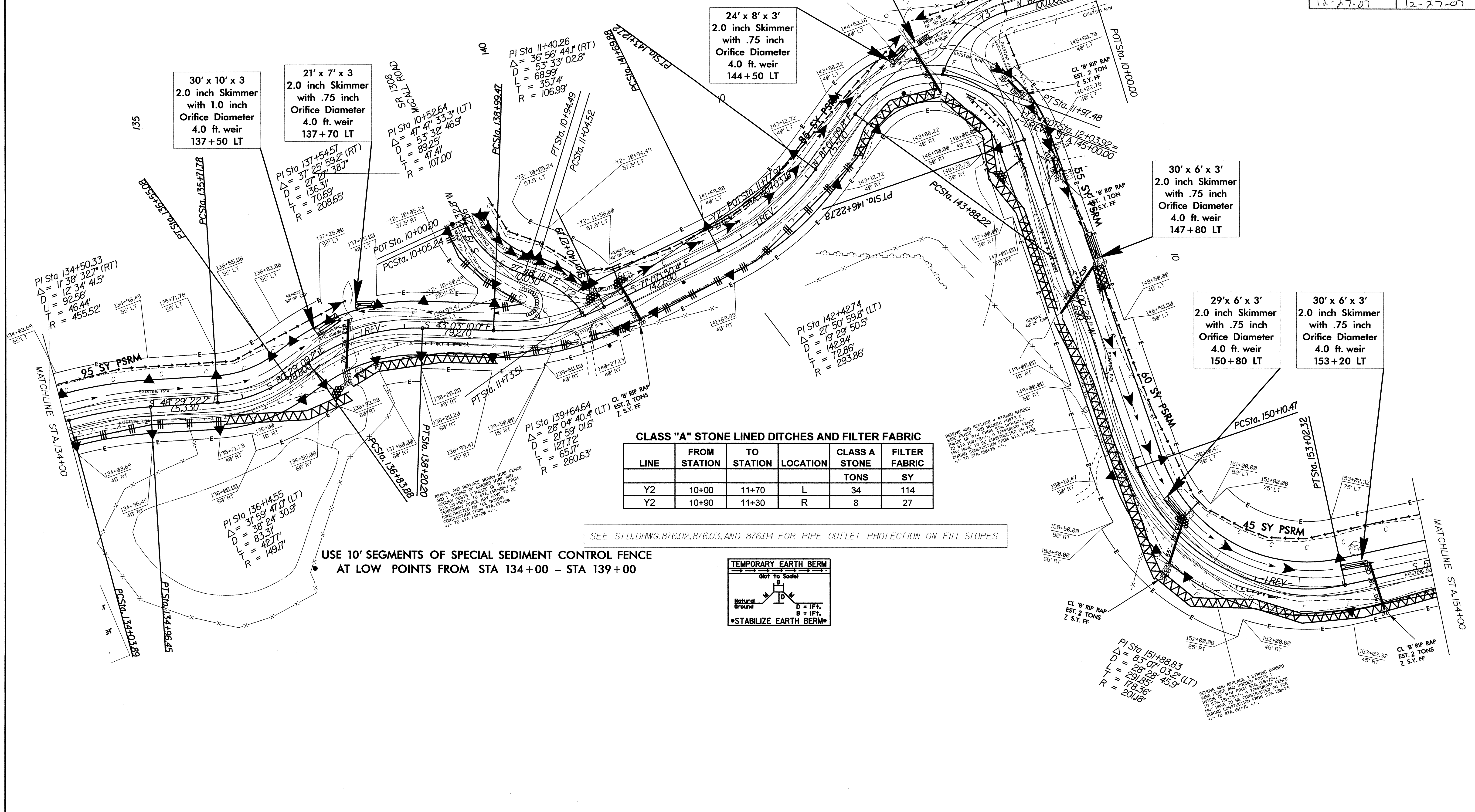
CLASS "A" STONE LINED DITCHES AND FILTER FABRIC

LINE	FROM STATION	TO STATION	LOCATION	CLASS A STONE TONS	FILTER FABRIC SY
LREV	119+56	122+33	R	56	185
LREV	119+58	123+35	L	76	252



REVISIONS

PROJECT REFERENCE NO. R-0619E1	SHEET NO. EC-12
RW SHEET NO.	
ROADWAY DESIGN ENGINEER PAUL RODNEY WHITE 12-27-07	HYDRAULICS ENGINEER PAUL RODNEY WHITE 12-27-07



30' x 10' x 3'
2.0 inch Skimmer
with 1.0 inch
Orifice Diameter
4.0 ft. weir
137+50 LT

21' x 7' x 3'
2.0 inch Skimmer
with .75 inch
Orifice Diameter
4.0 ft. weir
137+70 LT

24' x 8' x 3'
2.0 inch Skimmer
with .75 inch
Orifice Diameter
4.0 ft. weir
144+50 LT

30' x 6' x 3'
2.0 inch Skimmer
with .75 inch
Orifice Diameter
4.0 ft. weir
147+80 LT

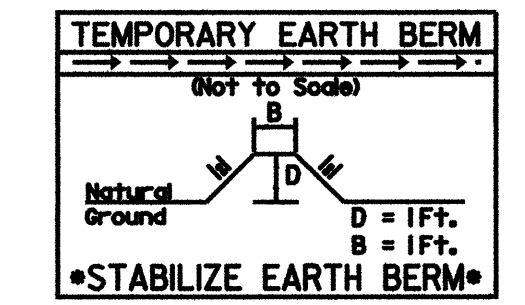
29' x 6' x 3'
2.0 inch Skimmer
with .75 inch
Orifice Diameter
4.0 ft. weir
150+80 LT

30' x 6' x 3'
2.0 inch Skimmer
with .75 inch
Orifice Diameter
4.0 ft. weir
153+20 LT

SEE STD.DRWG.876.02,876.03,AND 876.04 FOR PIPE OUTLET PROTECTION ON FILL SLOPES

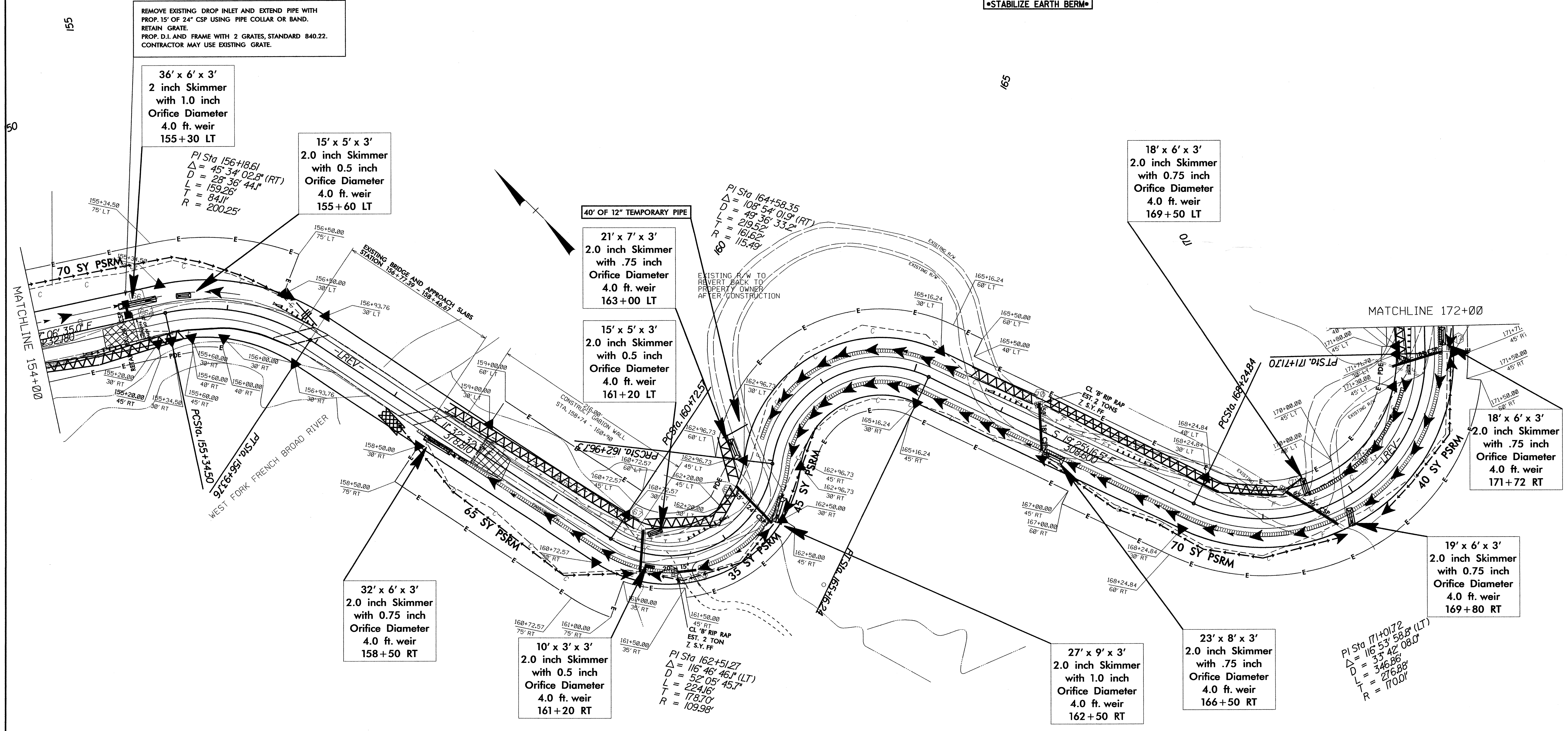
CLASS "A" STONE LINED DITCHES AND FILTER FABRIC

LINE	FROM STATION	TO STATION	LOCATION	CLASS A STONE TONS	FILTER FABRIC SY
LREV	158+41	161+49	R	62	206
LREV	161+60	172+00	R	209	694
LREV	163+21	165+53	L	47	155
LREV	169+48	171+27	L	36	120



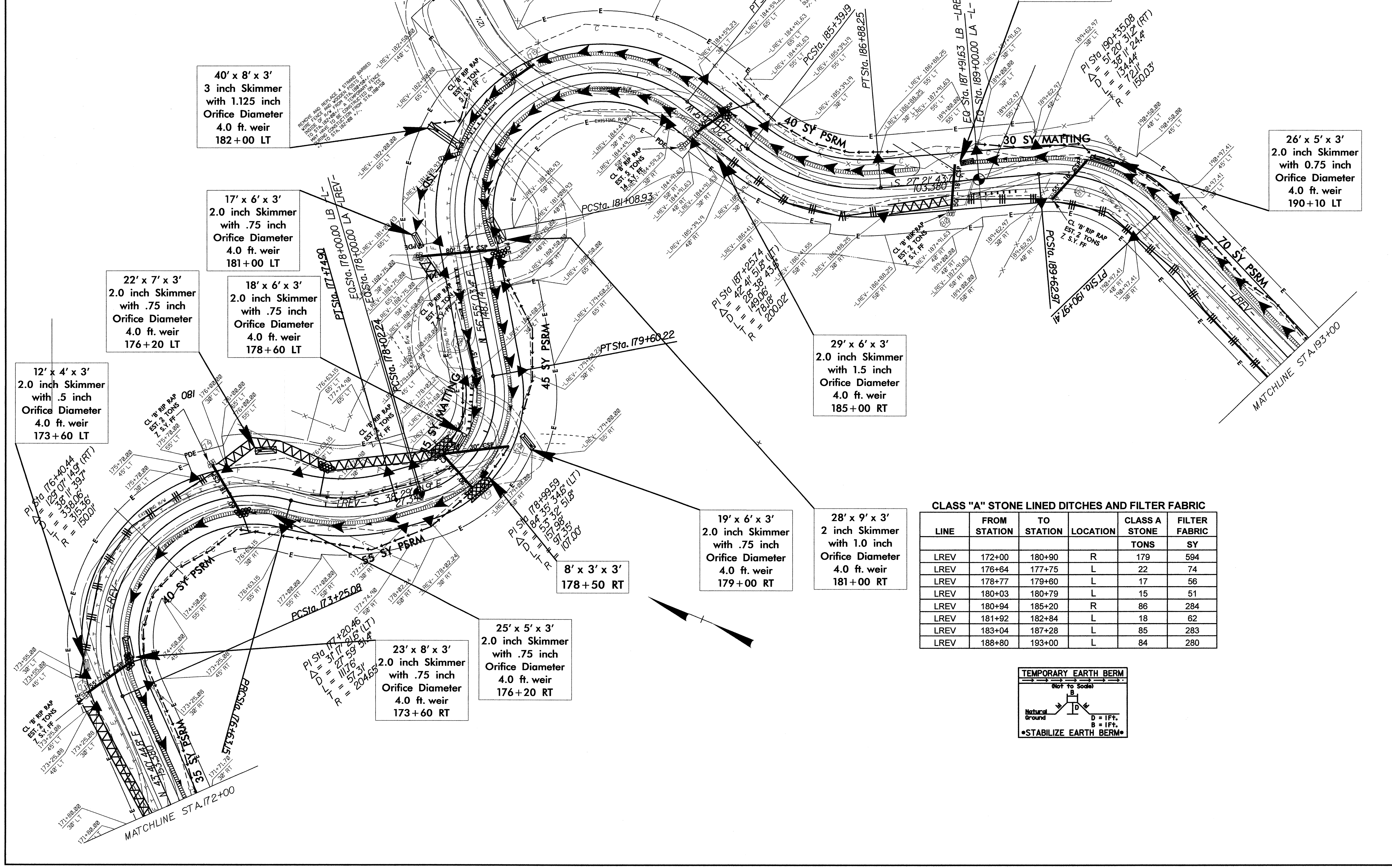
PAVEMENT REMOVAL

REVISIONS



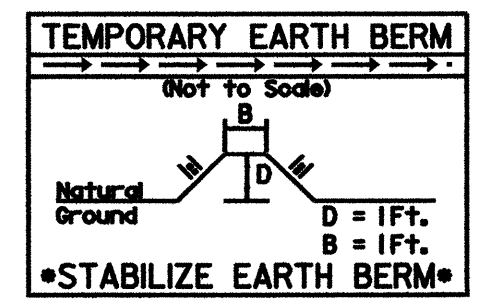
REVISIONS

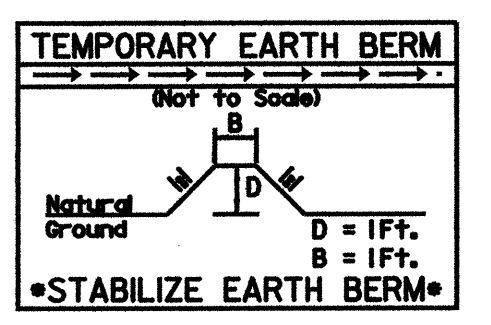
PROJECT REFERENCE NO. R-0619E1	SHEET NO. EC-14
RW SHEET NO.	
ROADWAY DESIGN ENGINEER NORTH CAROLINA PROFESSIONAL PAUL RODNEY WHITE 14447	HYDRAULICS ENGINEER NORTH CAROLINA PROFESSIONAL PAUL RODNEY WHITE 14447
1-7-08	1-7-08



CLASS "A" STONE LINED DITCHES AND FILTER FABRIC

LINE	FROM STATION	TO STATION	LOCATION	CLASS A STONE TONS	FILTER FABRIC SY
LREV	172+00	180+90	R	179	594
LREV	176+64	177+75	L	22	74
LREV	178+77	179+60	L	17	56
LREV	180+03	180+79	L	15	51
LREV	180+94	185+20	R	86	284
LREV	181+92	182+84	L	18	62
LREV	183+04	187+28	L	85	283
LREV	188+80	193+00	L	84	280





SEE STD.DRWG.876.02,876.03,AND 876.04 FOR PIPE OUTLET PROTECTION ON FILL SLOPES

CLASS "A" STONE LINED DITCHES AND FILTER FABRIC

LINE	FROM STATION	TO STATION	LOCATION	CLASS A STONE TONS	FILTER FABRIC SY
LREV	193+00	199+88	L	138	459
LREV	196+14	202+56	R	129	428
LREV	204+26	204+87	R	12	41
LREV	207+03	209+20	R	44	145
LREV	210+59	211+66	R	22	72
LREV	211+00	211+88	L	18	59
LREV	213+66	215+00	R	27	90

END PROJECT R-0619EI STATION 215+00

1
USFS TRACT #81A
DB XXX PG XXX

22' x 5' x 3'
2.0 inch Skimmer
with .75 inch
Orifice Diameter
4.0 ft. weir
193+20 LT

32' x 6' x 3'
2.0 inch Skimmer
with .75 inch
Orifice Diameter
4.0 ft. weir
207+10 RT

36' x 6' x 3'
2 inch Skimmer
with 1.0 inch
Orifice Diameter
4.0 ft. weir
200+00 RT

35' x 6' x 3'
2 inch Skimmer
with 1.0 inch
Orifice Diameter
4.0 ft. weir
202+50 RT

40' x 6' x 3'
2.0 inch Skimmer
with 1.0 inch
Orifice Diameter
4.0 ft. weir
210+50 RT

40' x 7' x 3'
2 inch Skimmer
with 1.0 inch
Orifice Diameter
4.0 ft. weir
195+50 RT

35' x 6' x 3'
2 inch Skimmer
with 1.0 inch
Orifice Diameter
4.0 ft. weir
196+10 RT

27' x 6' x 3'
2.0 inch Skimmer
with .75 inch
Orifice Diameter
4.0 ft. weir
204+20 RT

CLASS "A" FILTER FABRIC

FILTER FABRIC SY
594
74
56
51
284
62
283
280

REVISIONS

