

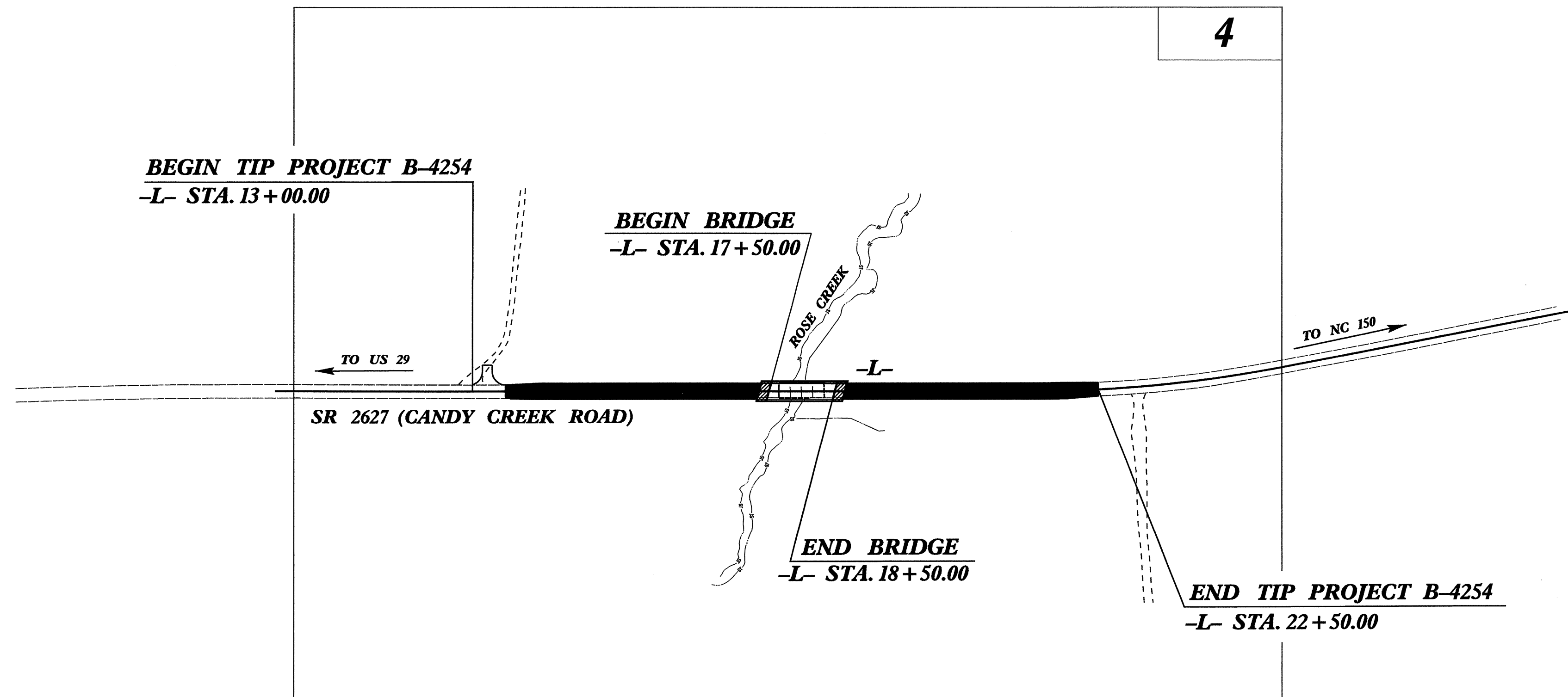
TIP PROJECT: B-4254

STATE OF NORTH CAROLINA
 DIVISION OF HIGHWAYS
 PLAN FOR PROPOSED
 HIGHWAY EROSION CONTROL

ROCKINGHAM COUNTY

**LOCATION: BRIDGE NO. 89 OVER ROSE CREEK ON
 SR 2627 (CANDY CREEK ROAD)**

**TYPE OF WORK: GRADING, DRAINAGE, PAVING &
 STRUCTURE**



STATE	STATE PROJECT REFERENCE NO.	SHEET NO.	TOTAL SHEETS
N.C.	B-4254	EC-1	
STATE PROJ. NO.	F.A. PROJ. NO.	DESCRIPTION	

EROSION AND SEDIMENT CONTROL MEASURES

Std. #	Description	Symbol
	Streambank Reforestation	
1630.03	Temporary Silt Ditch	
1630.05	Temporary Diversion	
1605.01	Temporary Silt Fence	
1606.01	Special Sediment Control Fence	
1622.01	Temporary Berms and Slope Drains	
1630.01	Riser Basin	
1630.02	Silt Basin Type B	
1633.01	Temporary Rock Silt Check Type-A	
	Temporary Rock Silt Check Type-B	
1634.01	Temporary Rock Sediment Dam Type-A	
1634.02	Temporary Rock Sediment Dam Type-B	
1635.01	Rock Pipe Inlet Sediment Trap Type-A	
1635.02	Rock Pipe Inlet Sediment Trap Type-B	
1630.04	Stilling Basin	
	Rock Inlet Sediment Trap:	
	Type A	
1632.01	Type B	
1632.02	Type C	
1632.03	Skimmer Basin	
	Tiered Skimmer Basin	
	Infiltration Basin	

**THIS PROJECT CONTAINS
 EROSION CONTROL PLANS
 FOR CLEARING AND
 GRUBBING PHASE OF
 CONSTRUCTION.**

GRAPHIC SCALE

0

PLANS

0

PROFILE (HORIZONTAL)

0

PROFILE (VERTICAL)

ROADSIDE ENVIRONMENTAL UNIT
 DIVISION OF HIGHWAYS
 STATE OF NORTH CAROLINA

Prepared In the Office of:
ROADSIDE ENVIRONMENTAL UNIT
 1 South Wilmington St.
 Raleigh, NC 27611
2006 STANDARD SPECIFICATIONS

Roadway Standard Drawings

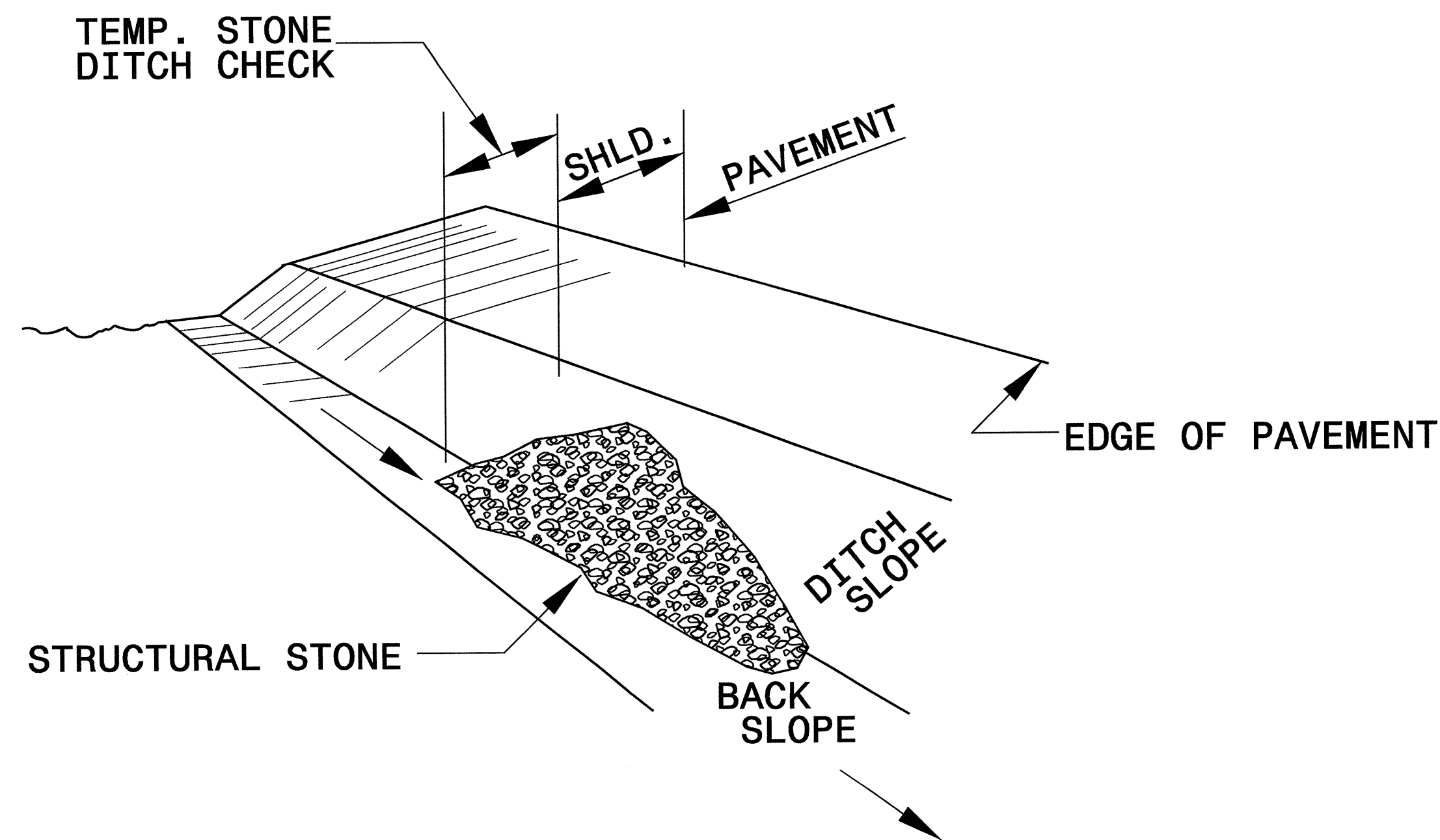
The following roadway english standards as appear in "Roadway Standard Drawings"- Roadway Design Unit - N. C. Department of Transportation - Raleigh, N. C., dated July 18, 2006 and the latest revision thereto are applicable to this project and by reference hereby are considered a part of these plans.

1605.01 Temporary Silt Fence	1632.03 Rock Inlet Sediment Trap Type C
1606.01 Special Sediment Control Fence	1633.01 Temporary Rock Silt Check Type A
1607.01 Gravel Construction Entrance	1634.02 Temporary Rock Sediment Dam Type B
1630.03 Temporary Silt Ditch	
1630.05 Temporary Diversion	

06-NOV-2007 10:50 AM C:\p06\msta\design\64254_r.dwg...tsh.dgn

PROJECT REFERENCE NO. B-4254	SHEET NO. EC-2
RW SHEET NO.	
ROADWAY DESIGN ENGINEER	HYDRAULICS ENGINEER

TEMPORARY ROCK SILT CHECK TYPE 'B' DETAIL

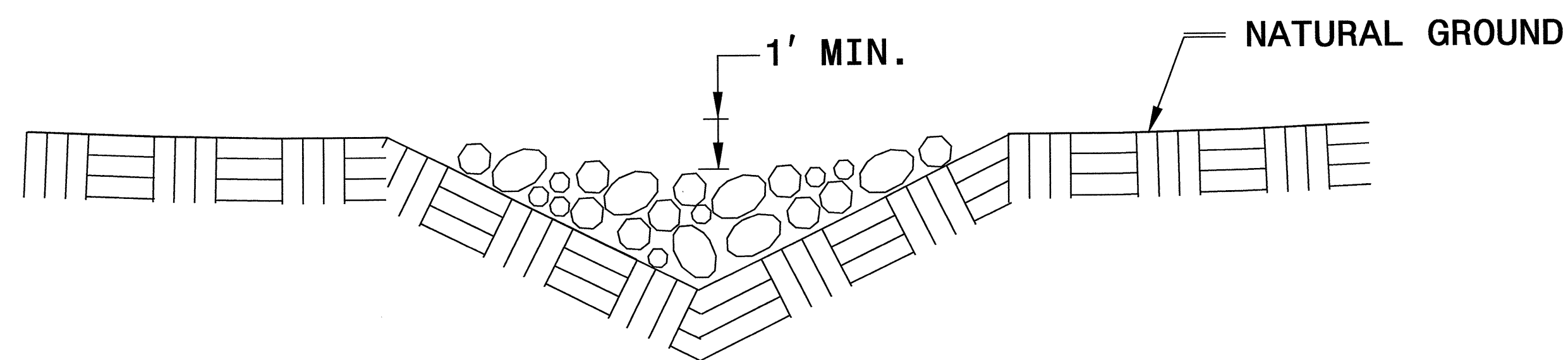


ISOMETRIC VIEW

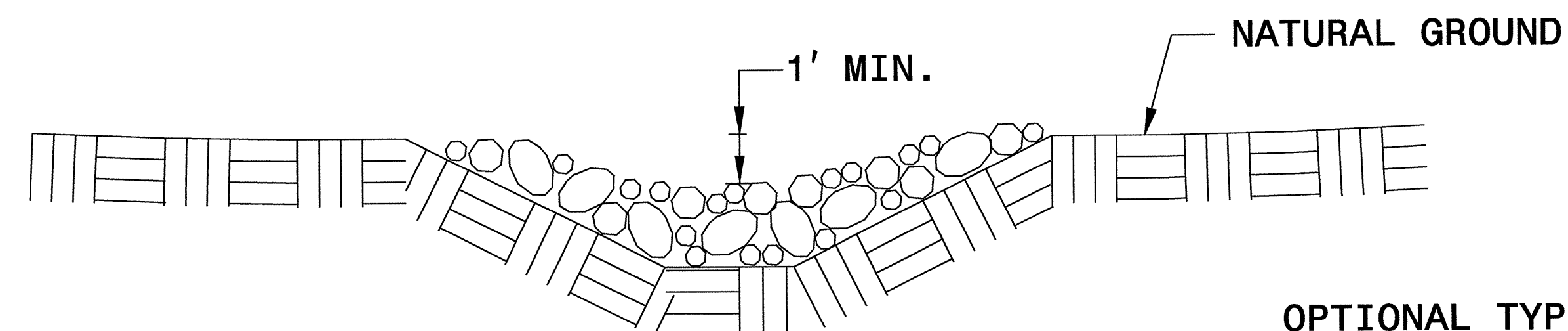
NOTES:

USE CLASS 'B' EROSION CONTROL STONE FOR STRUCTURAL STONE.

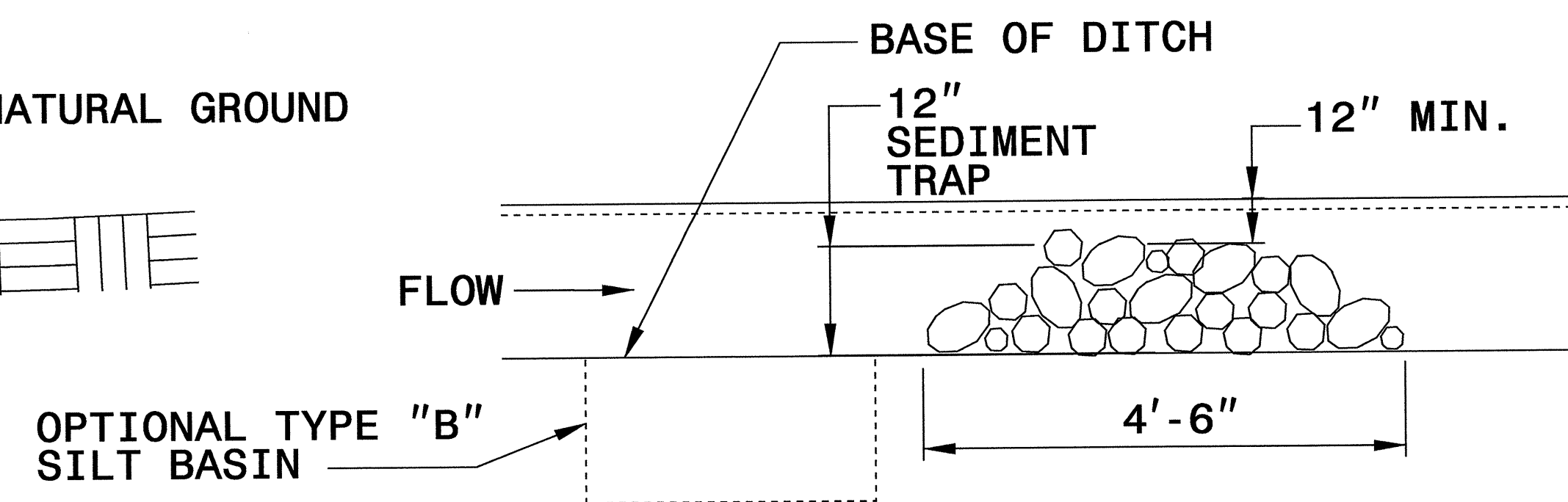
THE ENGINEER MAY DIRECT THE OPTION OF CLASS "A" STONE FOR SITES HAVING LESS THAN ONE (1) ACRE DRAINAGE AREA AND A DITCH GRADE LESS THAN 3%.



CROSS SECTION VEE DITCH



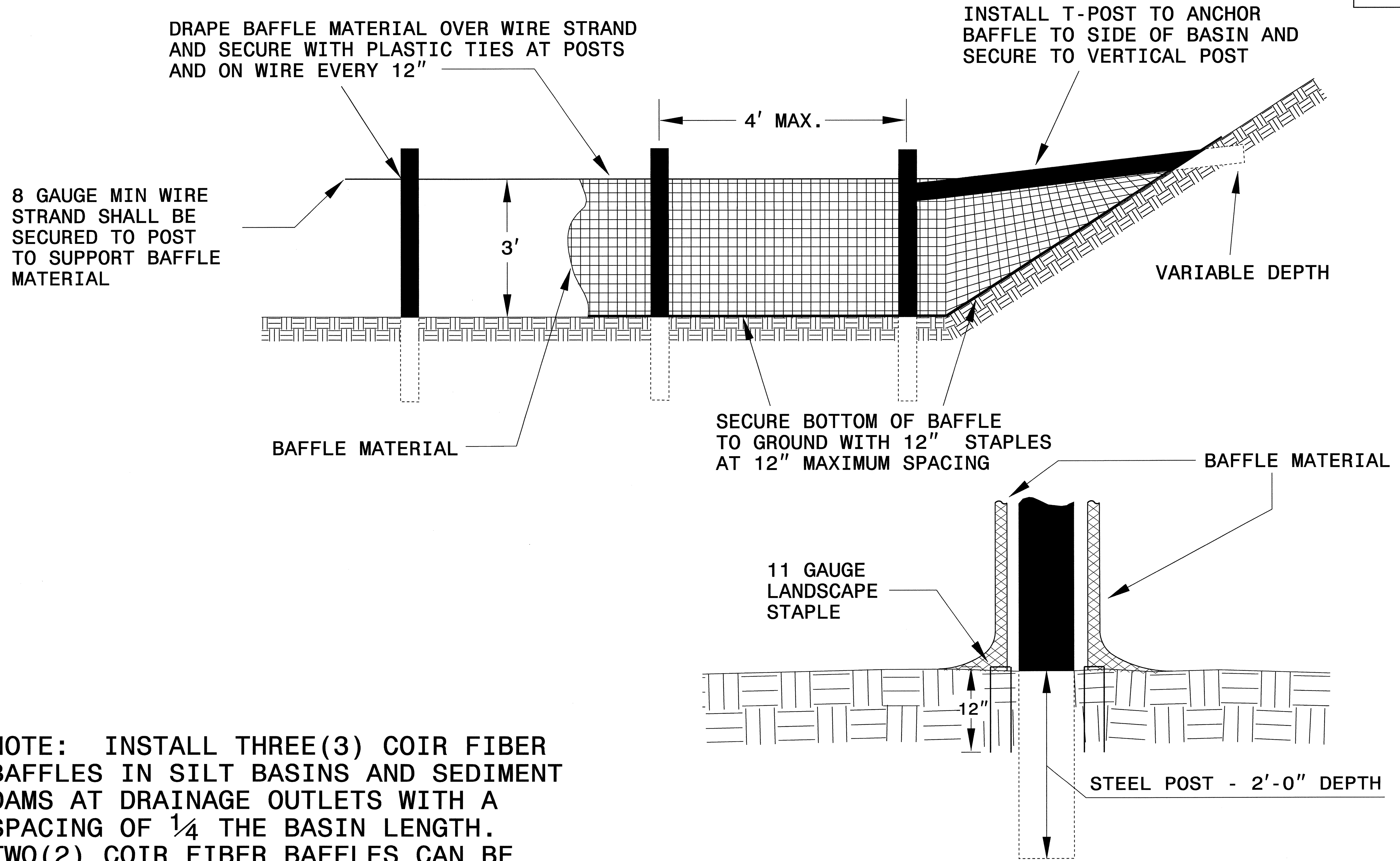
CROSS SECTION TRAPEZOIDAL DITCH



ELEVATION VIEW

PROJECT REFERENCE NO. B-4254	SHEET NO. EC-2A
RW SHEET NO.	
ROADWAY DESIGN ENGINEER	HYDRAULICS ENGINEER

COIR FIBER BAFFLE DETAIL

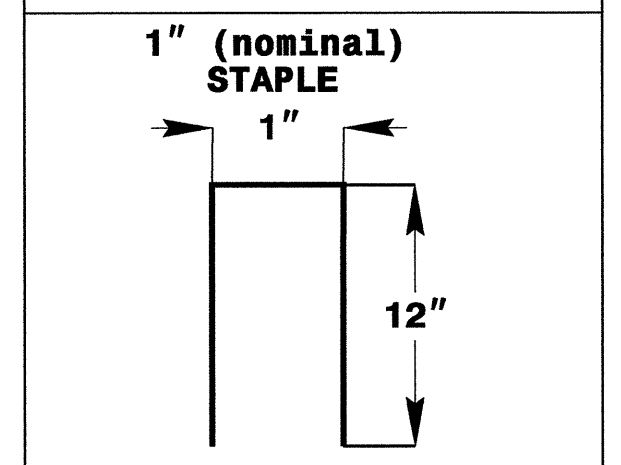
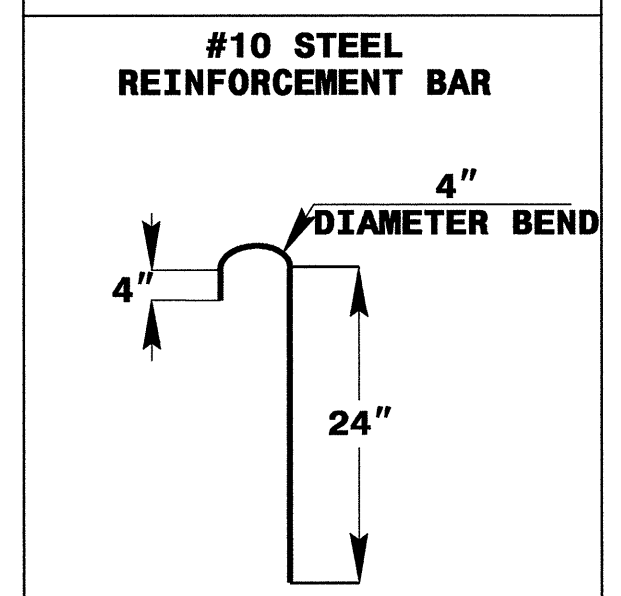
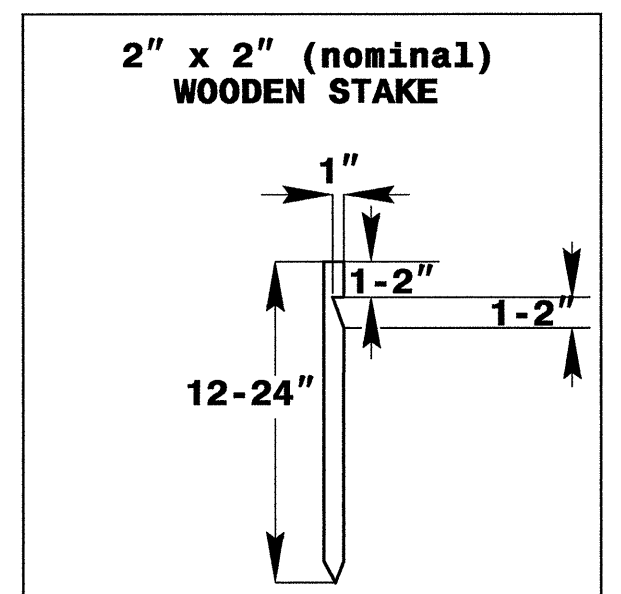
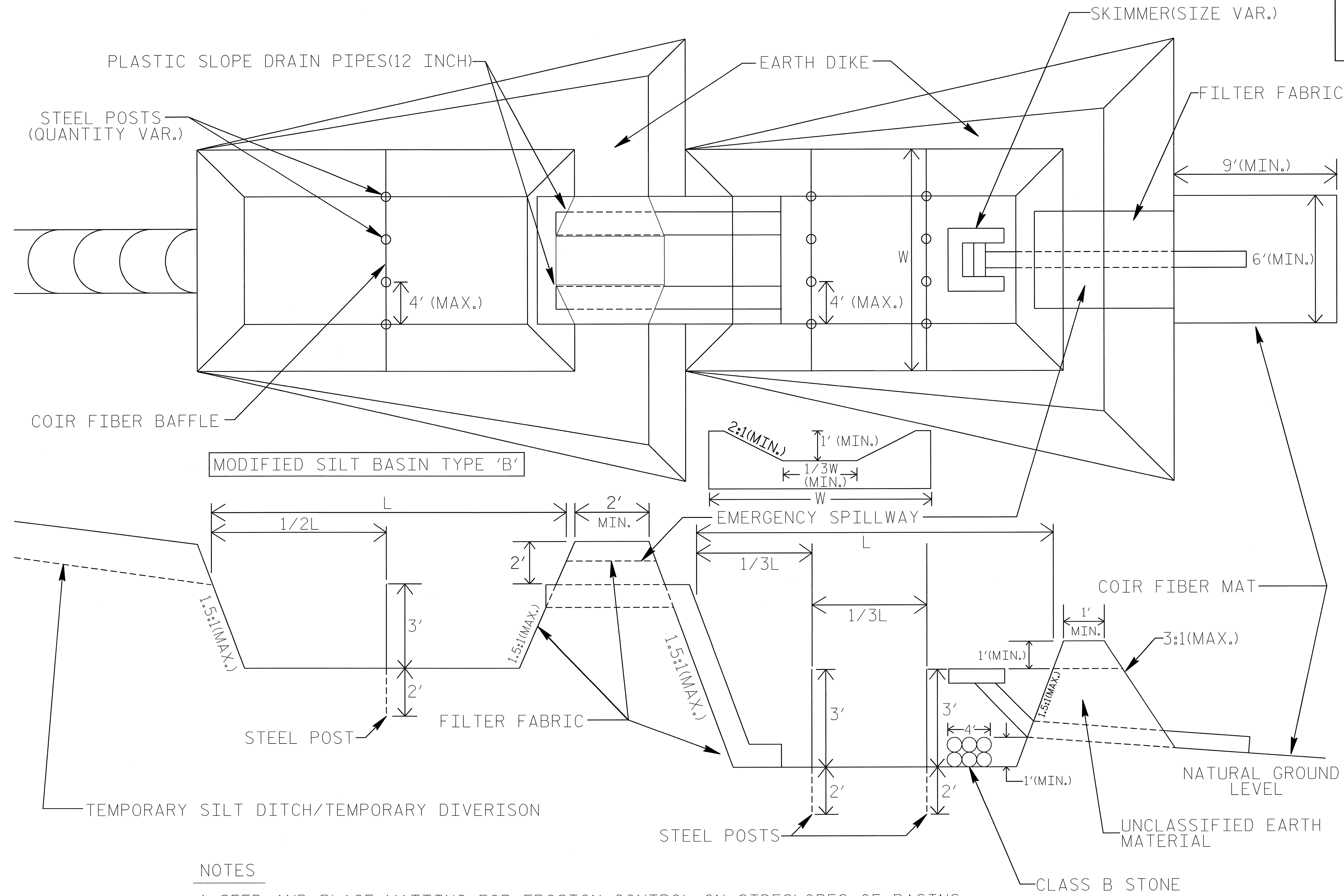


NOTE: INSTALL THREE(3) COIR FIBER BAFFLES IN SILT BASINS AND SEDIMENT DAMS AT DRAINAGE OUTLETS WITH A SPACING OF $\frac{1}{4}$ THE BASIN LENGTH. TWO(2) COIR FIBER BAFFLES CAN BE INSTALLED IN SILT BASINS AND DAMS LESS THAN 20 FT. IN LENGTH WITH A SPACING OF $\frac{1}{3}$ THE BASIN LENGTH.

BAFFLE MATERIAL SHALL BE SECURED TO THE BOTTOM AND SIDES OF BASIN USING 12" LANDSCAPE STAPLES

TIERED SKIMMER BASIN DETAIL

PROJECT REFERENCE NO. B-4254	SHEET NO. EC-2B
RW SHEET NO.	
ROADWAY DESIGN ENGINEER	HYDRAULICS ENGINEER

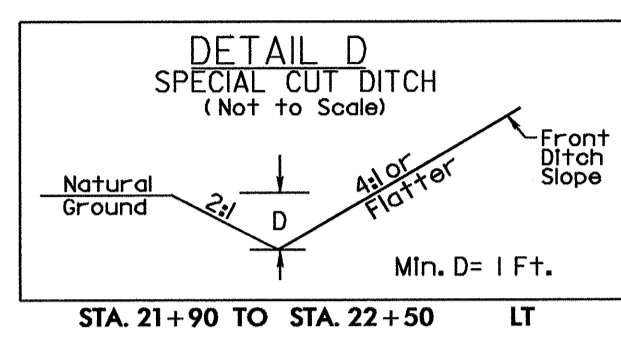
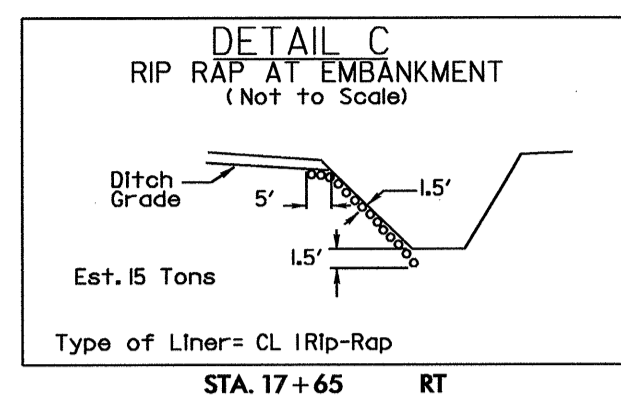
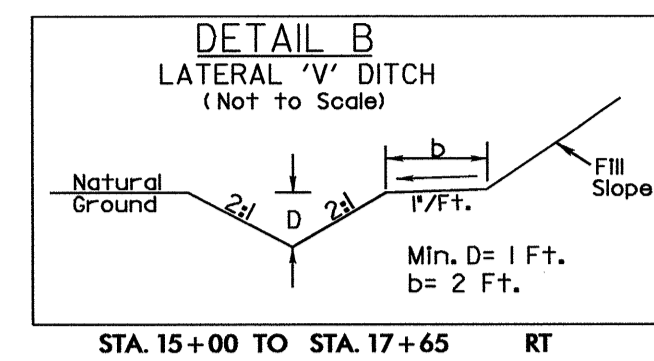
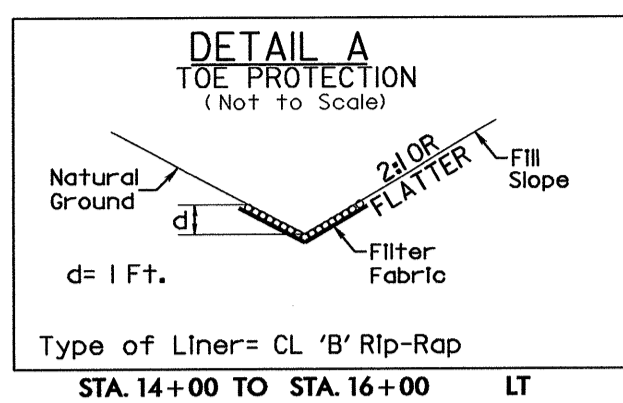


COIR FIBER MAT ANCHOR OPTIONS

NOTES

1. SEED AND PLACE MATTING FOR EROSION CONTROL ON SIDESLOPES OF BASINS.
2. LIMIT HEIGHT OF EARTH DIKES TO 5 FT.
3. ADDITIONAL MODIFIED SILT BASINS TYPE 'B' MAY BE NEEDED DEPENDING ON SLOPE.

PROJECT REFERENCE NO. B-4254	SHEET NO. EC-4/CONST.4
RW SHEET NO.	
ROADWAY DESIGN ENGINEER	HYDRAULICS ENGINEER



CLEARING AND GRUBBING
EROSION CONTROL FOR
CONSTRUCTION SHEET 4

NOTE:
PLACE TEMPORARY ROCK SEDIMENT DAMS TYPE - B
AND TEMPORARY ROCK SILT CHECKS TYPE - A AT
DRAINAGE OUTLETS.

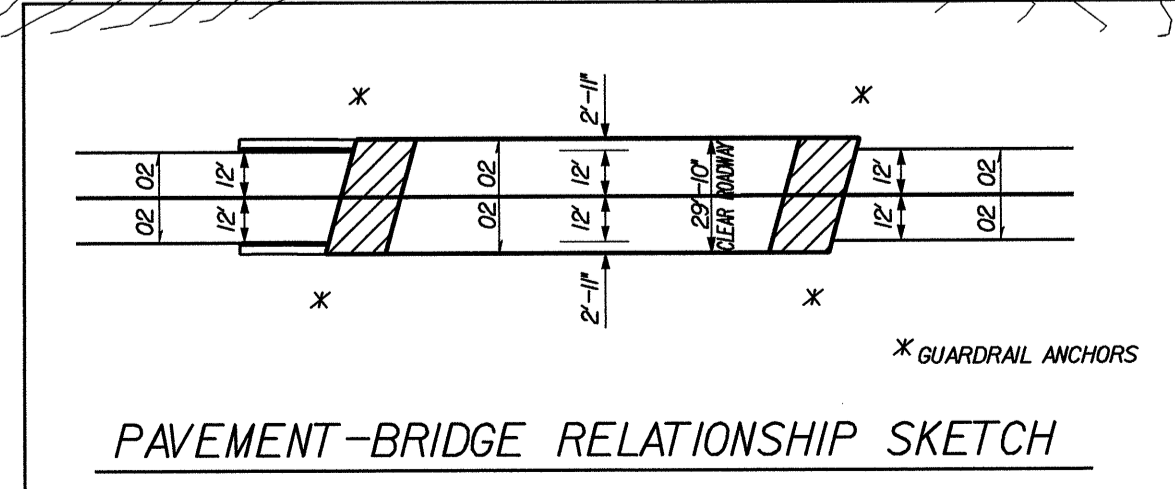
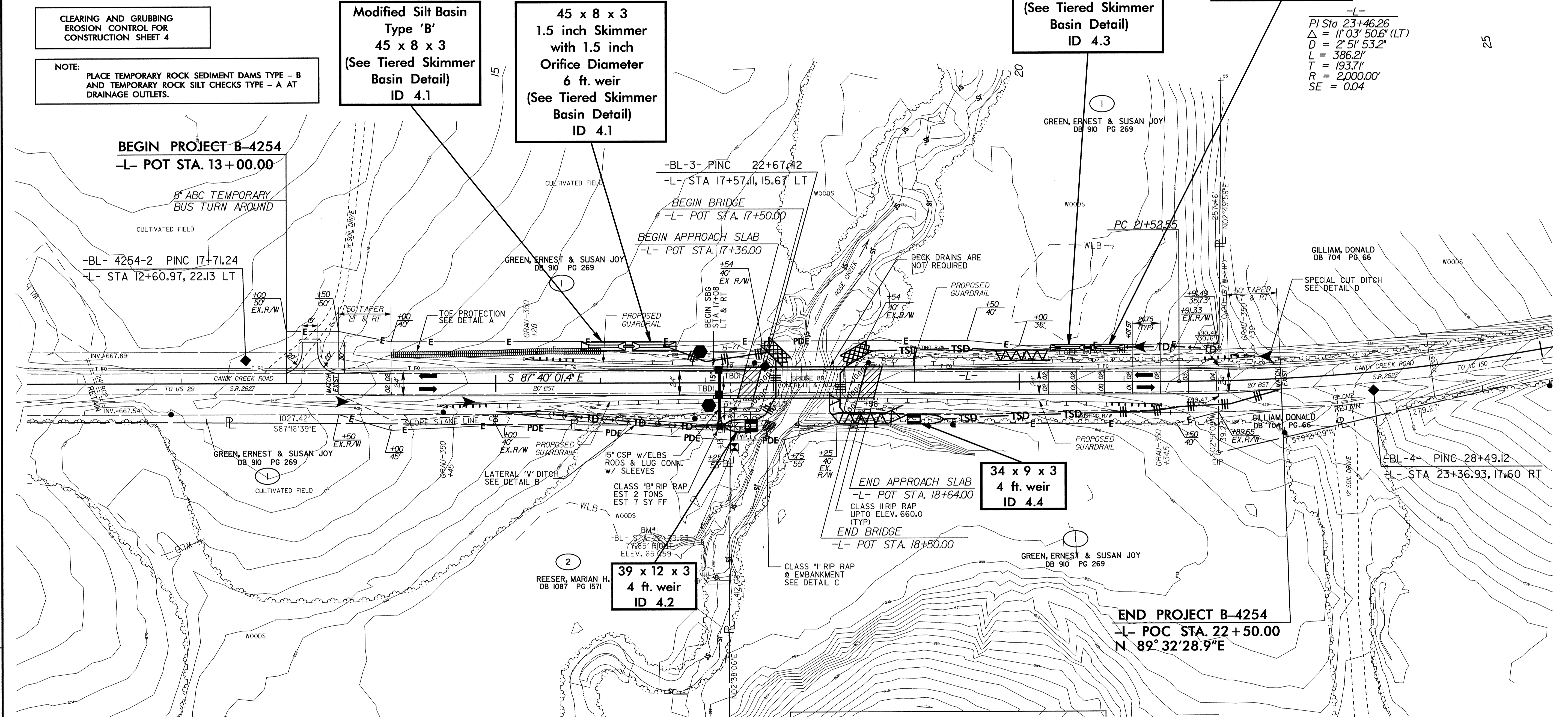
**Modified Silt Basin
Type 'B'
45 x 8 x 3
(See Tiered Skimmer
Basin Detail)
ID 4.1**

**45 x 8 x 3
1.5 inch Skimmer
with 1.5 inch
Orifice Diameter
6 ft. weir
(See Tiered Skimmer
Basin Detail)
ID 4.1**

**34 x 6 x 3
1.5 inch Skimmer
with 1.250 inch
Orifice Diameter
6 ft. weir
(See Tiered Skimmer
Basin Detail)
ID 4.3**

**Modified Silt Basin
Type 'B'
34 x 6 x 3
(See Tiered Skimmer
Basin Detail)
ID 4.3**

-L-
PI Sta 23+46.26
 $\Delta = 11' 03" 50.6" (LT)$
 $D = 2' 51" 53.2"$
 $L = 386.21'$
 $T = 193.71'$
 $R = 2,000.00'$
 $SE = 0.04$



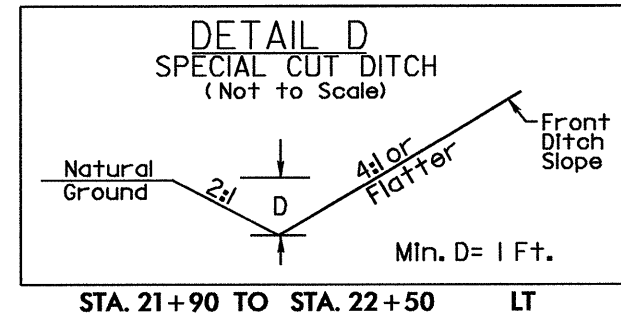
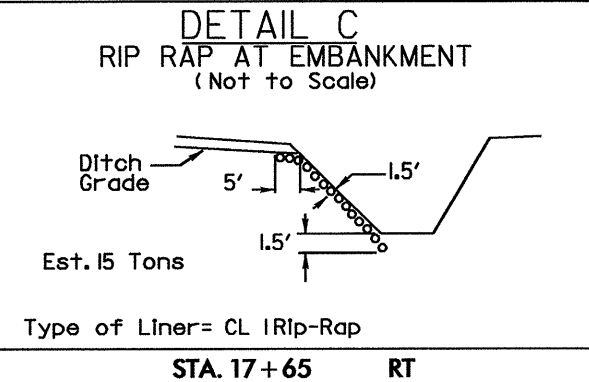
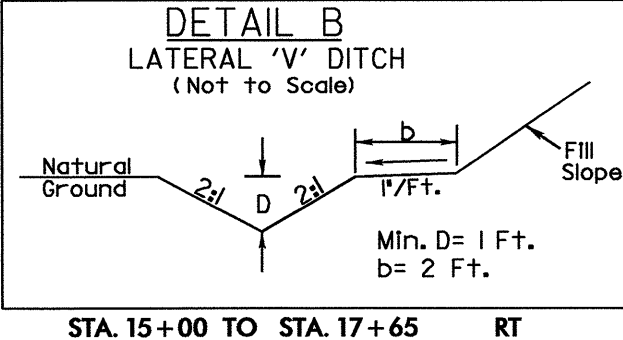
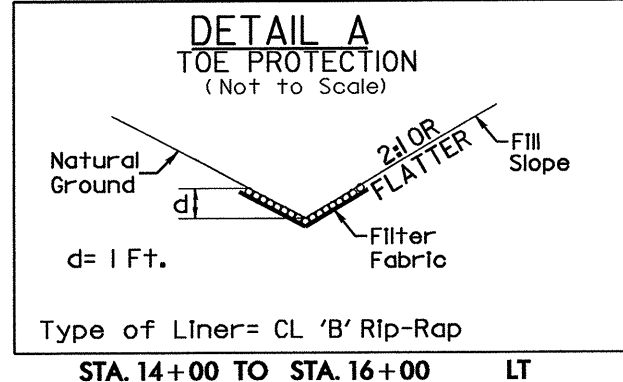
NOTE:
UTILIZE TEMPORARY ROCK SEDIMENT DAM TYPE - B
AS STILLING BASIN WHERE APPLICABLE.

REFERENCES:
FOR -L- PROFILE SEE SHEET NO.5

REVISIONS

8/17/99
05-NOV-2007 14:50
G:\TIP\Projects\B-4254-Environmental\Design\B-4254-EC.dsn.dgn
PLN 231813

PROJECT REFERENCE NO.	SHEET NO.
B-4254	EC-5/CONST.4
RW SHEET NO.	
ROADWAY DESIGN ENGINEER	HYDRAULICS ENGINEER



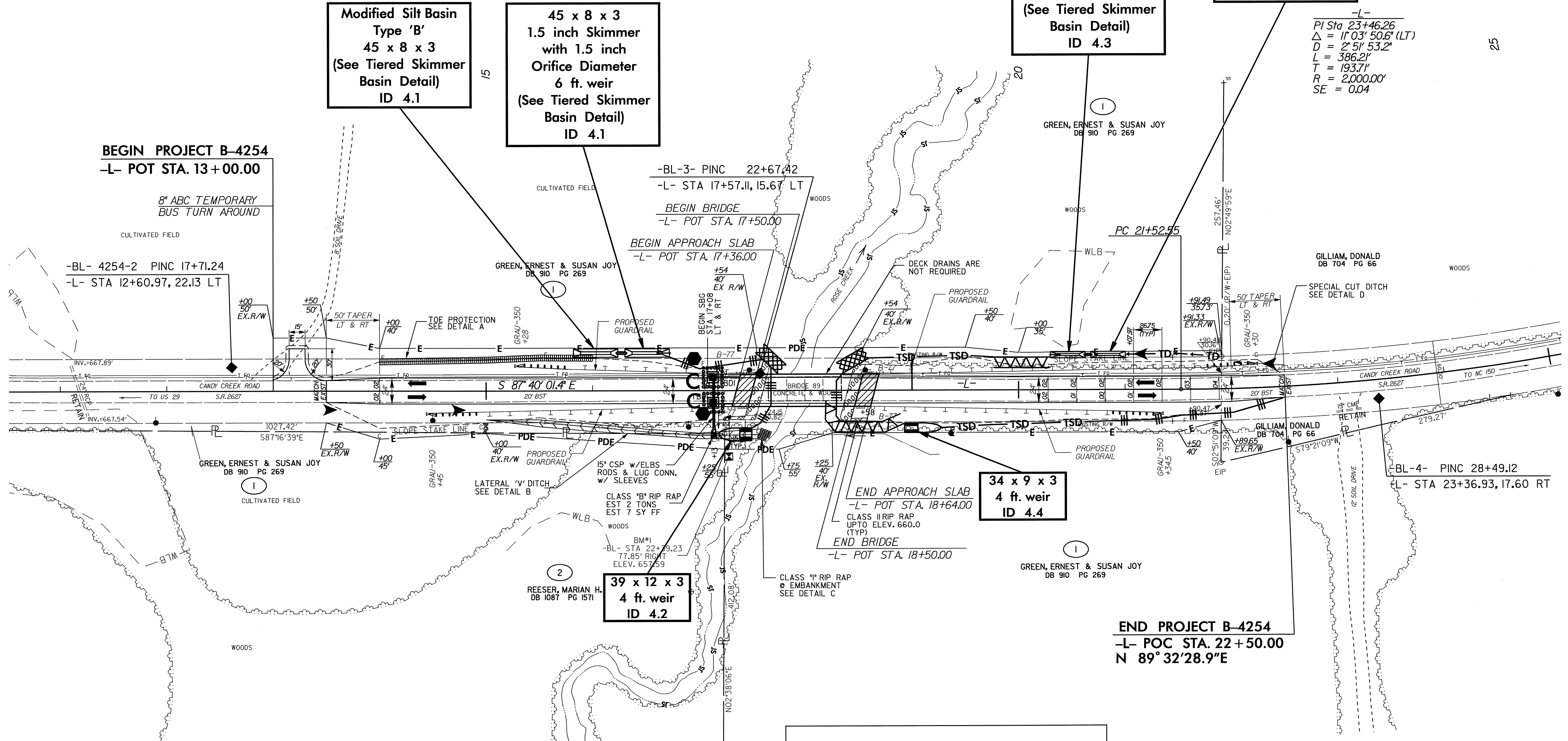
**Modified Silt Basin
Type 'B'
45 x 8 x 3
(See Tiered Skimmer
Basin Detail)
ID 4.1**

**45 x 8 x 3
1.5 inch Skimmer
with 1.5 inch
Orifice Diameter
6 ft. weir
(See Tiered Skimmer
Basin Detail)
ID 4.1**

**34 x 6 x 3
1.5 inch Skimmer
with 1.250 inch
Orifice Diameter
6 ft. weir
(See Tiered Skimmer
Basin Detail)
ID 4.3**

**Modified Silt Basin
Type 'B'
34 x 6 x 3
(See Tiered Skimmer
Basin Detail)
ID 4.3**

-L-
PI Sta 23+46.26
 $\Delta = 11^{\circ}03'50.6''$ (LT)
D = 2' 51" 53.2"
L = 386.21'
T = 193.71'
R = 2,000.00'
SE = 0.04



**BEGIN PROJECT B-4254
-L- POT STA. 13+00.00**

**8" ABC TEMPORARY
BUS TURN AROUND**

-BL- 4254-2 PINC 17+71.24
-L- STA 12+60.97, 22.13 LT

-BL-3- PINC 22+67.42
-L- STA 17+57.11, 15.67 LT

**BEGIN BRIDGE
-L- POT STA. 17+50.00**

**BEGIN APPROACH SLAB
-L- POT STA. 17+36.00**

**34 x 9 x 3
4 ft. weir
ID 4.4**

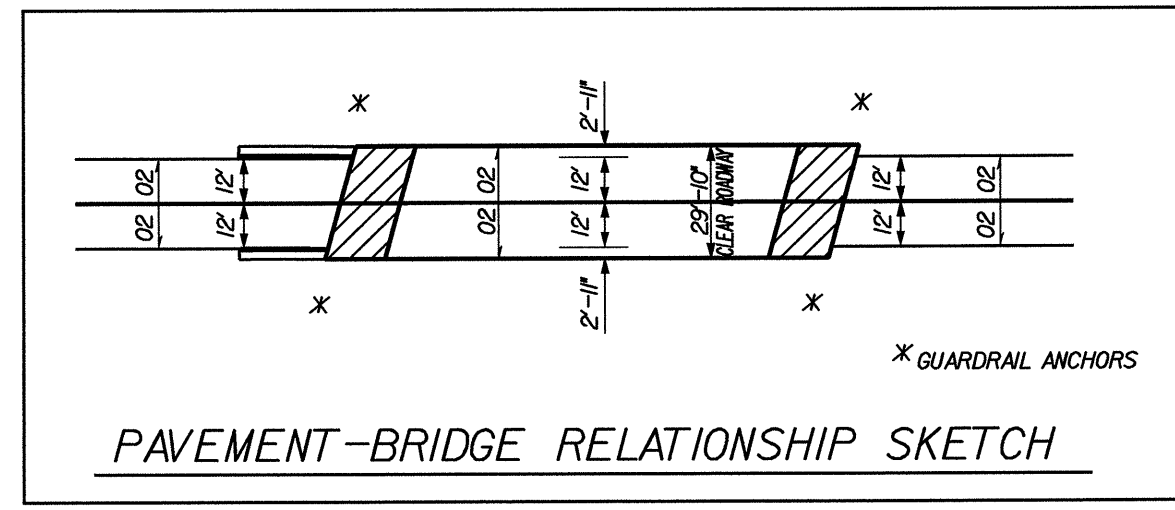
**END APPROACH SLAB
-L- POT STA. 18+64.00**

**END BRIDGE
-L- POT STA. 18+50.00**

**39 x 12 x 3
4 ft. weir
ID 4.2**

**END PROJECT B-4254
-L- POC STA. 22+50.00
N 89° 32' 28.9"E**

-BL-4- PINC 28+49.12
-L- STA 23+36.93, 17.60 RT



NOTE:
UTILIZE TEMPORARY ROCK SEDIMENT DAM TYPE - B
AS STILLING BASIN WHERE APPLICABLE.

REFERENCES:
FOR -L- PROFILE SEE SHEET NO.5

REVISIONS

8/17/99
05-NOV-2007 14:50
G:\TTP\Projects\B-4254\Environmental\Design\B-4254-EC.dsn.dgn
Project - 21-ENV-21813