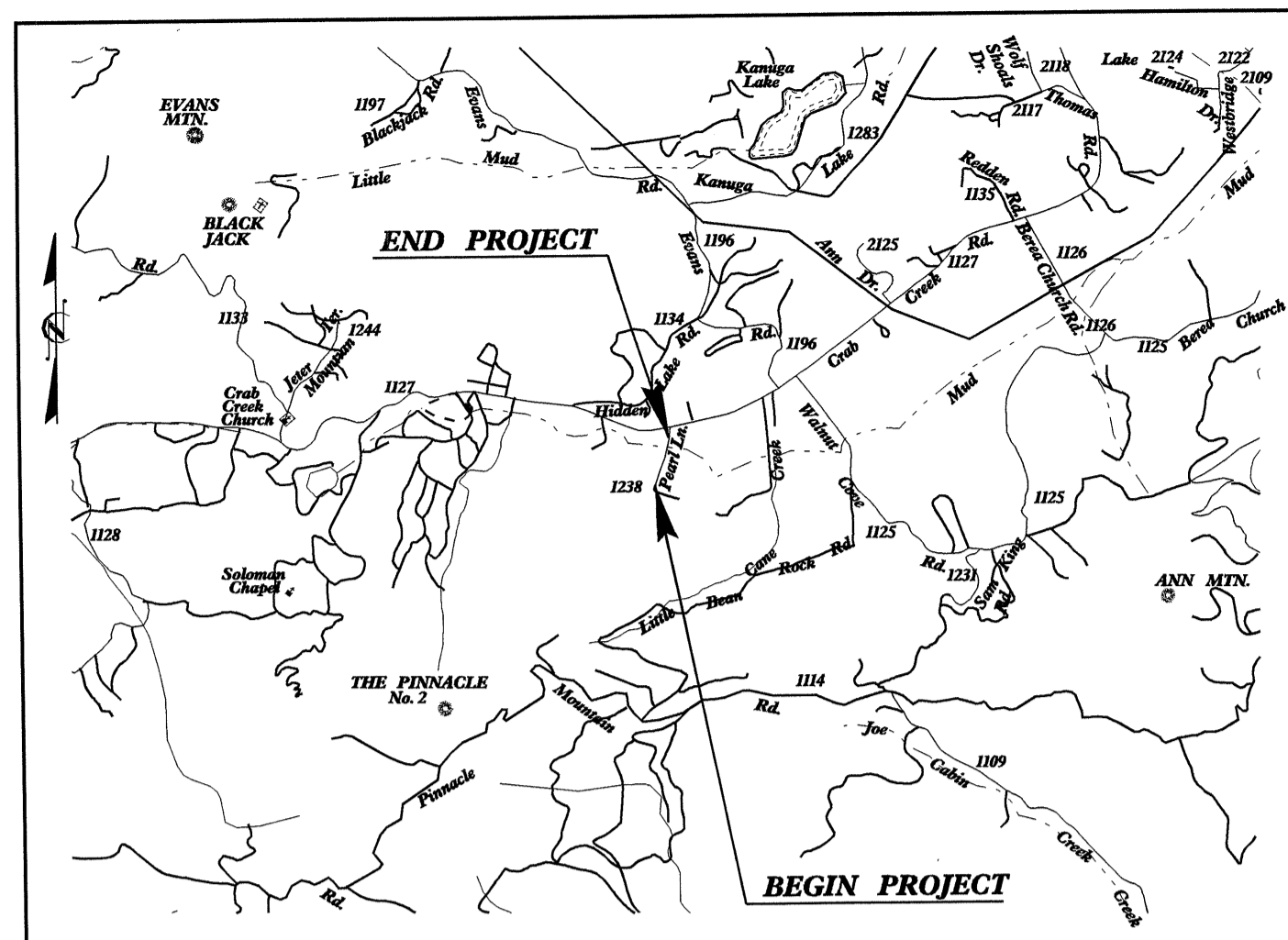


09/08/99

T.I.P. NO.	SHEET NO.
B-3856	UO-1

TIP PROJECT: B-3856

CONTRACT: C201618



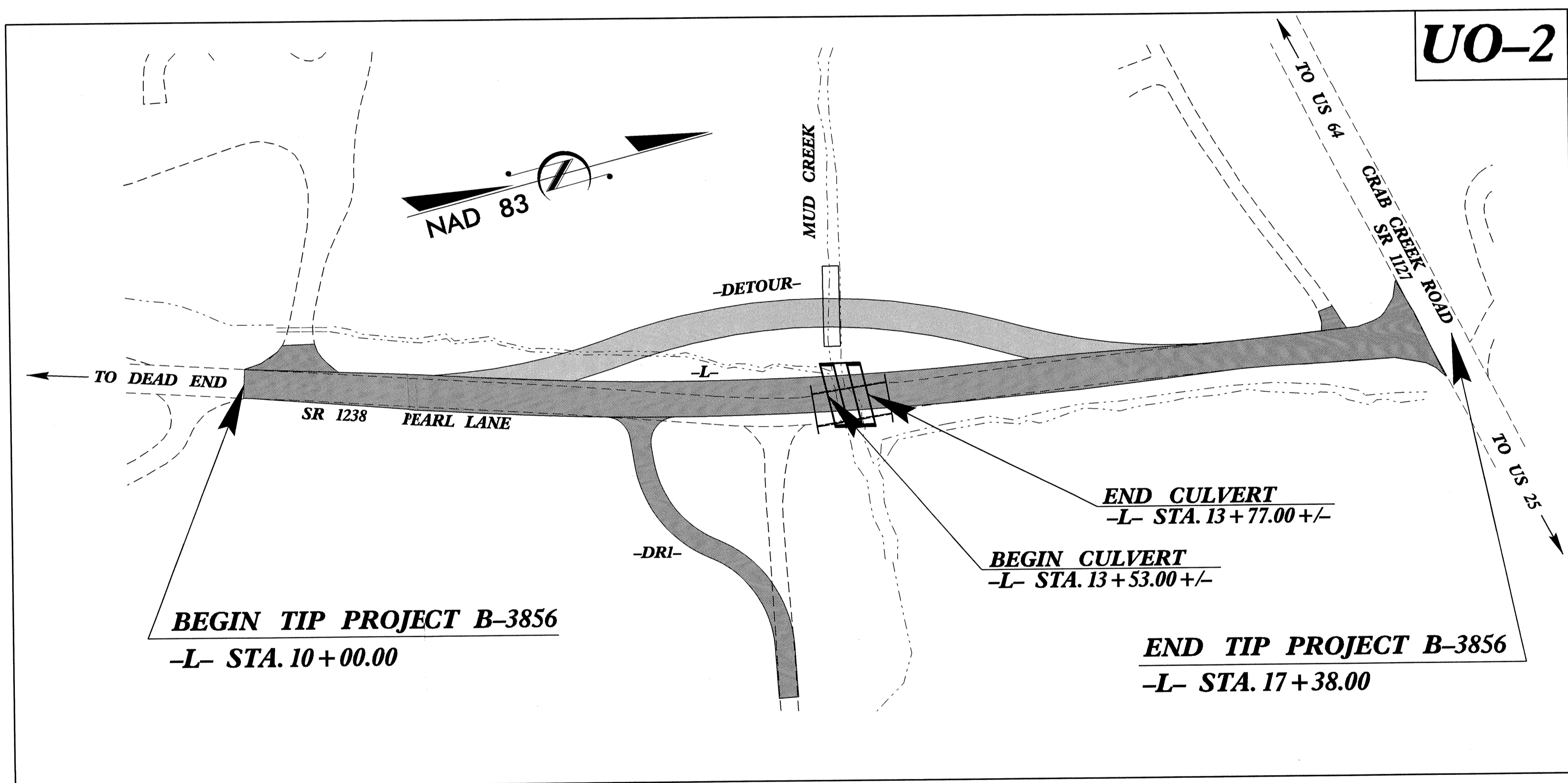
VICINITY MAP

STATE OF NORTH CAROLINA
DIVISION OF HIGHWAYS

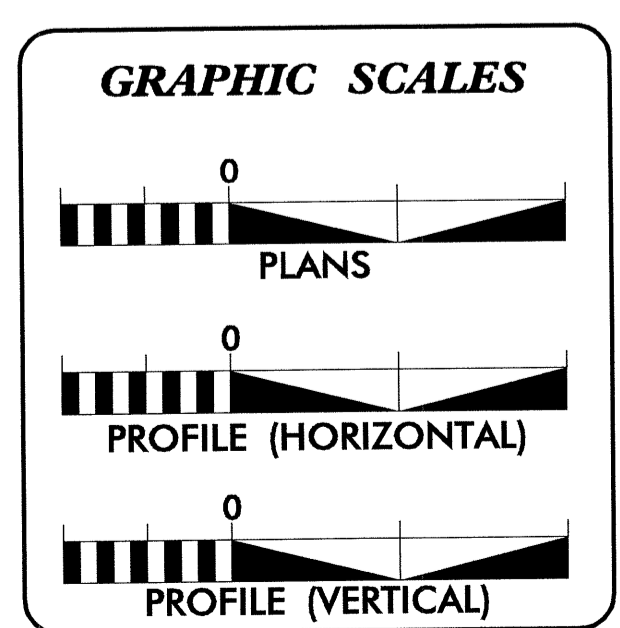
**UTILITY BY OTHERS PLANS
HENDERSON COUNTY**

LOCATION: BRIDGE 335 OVER MUD CREEK ON SR 1238 (PEARL LANE)

TYPE OF WORK: UTILITIES BY OTHERS

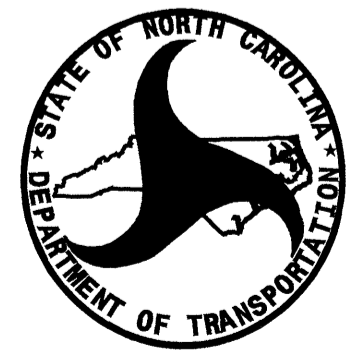


UO-2



SHEET NO.	DESCRIPTION
UO-1	TITLE SHEET
UO-2	UTILITY BY OTHERS PLAN SHEETS

UTILITY OWNERS ON PROJECT
(1) AT&T OF NORTH CAROLINA



PREPARED IN THE OFFICE OF:
DIVISION OF HIGHWAYS
DESIGN SERVICES
UTILITY SECTION
1591 MAIL SERVICES CENTER
RALEIGH, NC 27699-1591
PHONE (919) 250-4128
FAX (919) 250-4119

Roger Worthington, P.E. UTILITIES SECTION ENGINEER
R. B. WILKINS, P.E. UTILITIES SQUAD LEADER PROJECT ENGINEER
MICHAEL R. BRIGHT UTILITIES PROJECT DESIGNER

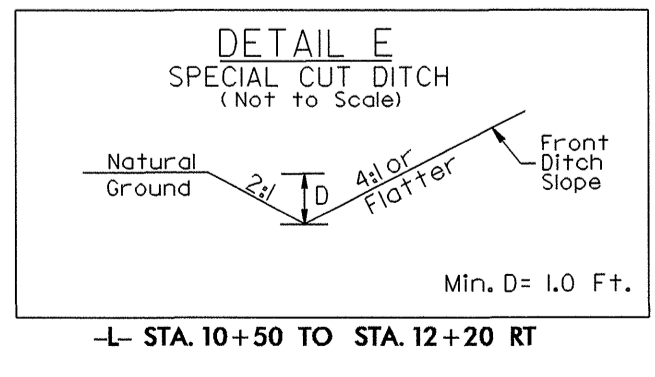
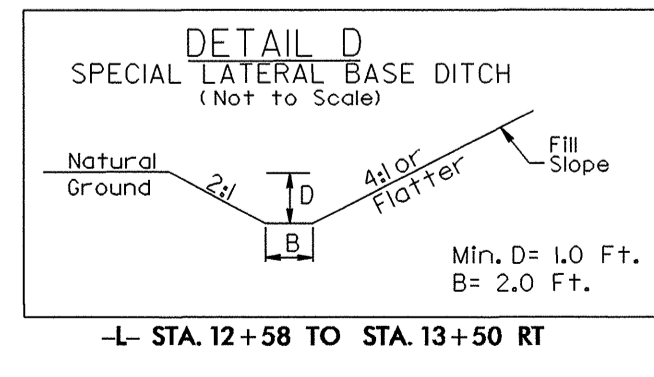
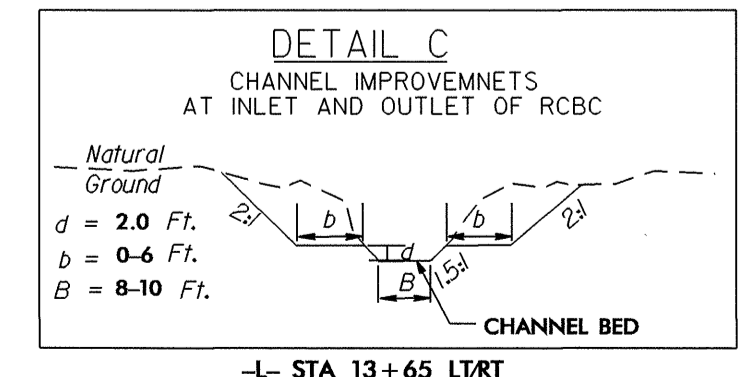
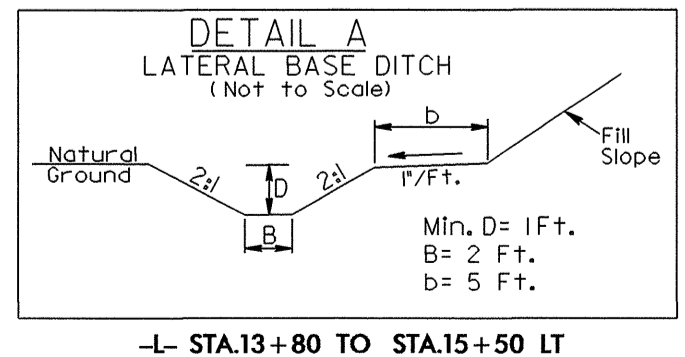
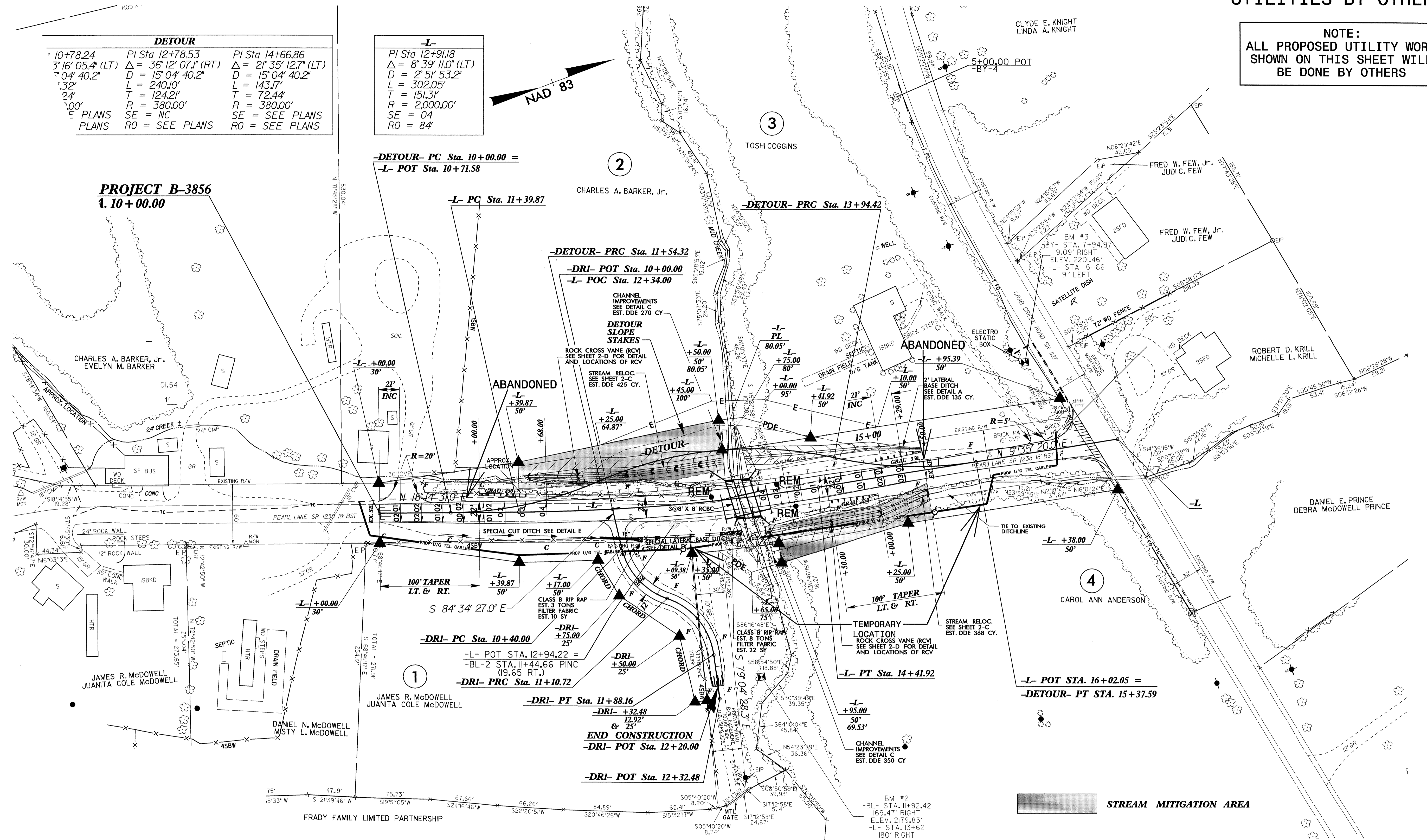
09-MAY-2007 15:17
C:\utilities\dy_ut\proj\B3856_UO-1\Title_UO1_psh.dgn
\$\$\$\$\$USERNAME\$\$\$\$\$

UTILITIES BY OTHERS

NOTE:
ALL PROPOSED UTILITY WORK SHOWN ON THIS SHEET WILL BE DONE BY OTHERS

DETOUR		
PI Sta 10+78.24	PI Sta 12+78.53	PI Sta 14+66.86
Δ = 36° 12' 07.1" (RT)	Δ = 36° 12' 07.1" (RT)	Δ = 21° 35' 12.7" (LT)
D = 15° 04' 40.2"	D = 15° 04' 40.2"	D = 15° 04' 40.2"
L = 240.10'	L = 143.17'	L = 143.17'
T = 124.21'	T = 72.44'	T = 72.44'
R = 380.00'	R = 380.00'	R = 380.00'
SE = NC	SE = NC	SE = SEE PLANS
RO = SEE PLANS	RO = SEE PLANS	RO = SEE PLANS

-L-	
PI Sta 12+91.8	PI Sta 14+66.86
Δ = 8° 39' 11.0" (LT)	Δ = 21° 35' 12.7" (LT)
D = 2° 51' 53.2"	D = 15° 04' 40.2"
L = 302.05'	L = 143.17'
T = 151.31'	T = 72.44'
R = 2,000.00'	R = 380.00'
SE = 04	SE = SEE PLANS
RO = 84'	RO = SEE PLANS



5/14/99
12-JUN-2007 10:59
C:\p1\proj\B-3856\ut_4_uo2_psh.dgn