


TIP PROJECT: U-3119A

STATE OF NORTH CAROLINA
 DIVISION OF HIGHWAYS
 PLAN FOR PROPOSED
 HIGHWAY EROSION CONTROL
FORSYTH COUNTY

LOCATION: WINSTON-SALEM SR 1103 (LEWISVILLE-CLEMMONS RD.) FROM SR 1891 (PEACE HAVEN RD.) TO SR 3580 (FOREST OAKS DR.)
TYPE OF WORK: GRADING, DRAINAGE, PAVING, CURB AND GUTTER AND SIDEWALK



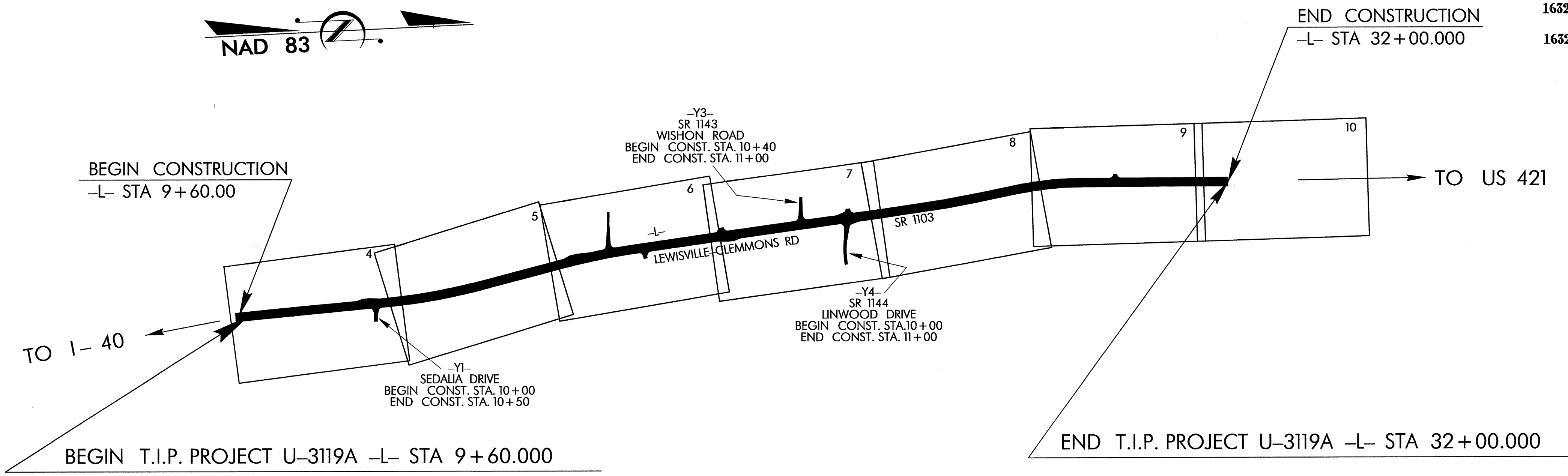
ALL DIMENSIONS IN THESE PLANS ARE IN METERS UNLESS OTHERWISE SHOWN

STATE	STATE PROJECT REFERENCE NO.	SHEET NO.	TOTAL SHEETS
N.C.	U-3119A	EC-1	
STATE PROJ. NO.	F.A. PROJ. NO.	DESCRIPTION	

EROSION AND SEDIMENT CONTROL MEASURES

Std. #	Description	Symbol
	Streambank Reforestation	
1630.03	Temporary Silt Ditch	
1630.05	Temporary Diversion	
1605.01	Temporary Silt Fence	
1606.01	Special Sediment Control Fence	
1622.01	Temporary Berms and Slope Drains	
1630.01	Riser Basin	
1630.02	Silt Basin Type B	
1633.01	Temporary Rock Silt Check Type-A	
1633.02	Temporary Rock Silt Check Type-B	
1634.01	Temporary Rock Sediment Dam Type-A	
1634.02	Temporary Rock Sediment Dam Type-B	
1635.01	Rock Pipe Inlet Sediment Trap Type-A	
1635.02	Rock Pipe Inlet Sediment Trap Type-B	
1630.04	Stilling Basin	
	Rock Inlet Sediment Trap:	
1632.01	Type A	
1632.02	Type B	
1632.03	Type C	
	Skimmer Basin	
	Tiered Skimmer Basin	

THIS PROJECT CONTAINS EROSION CONTROL PLANS FOR CLEARING AND GRUBBING PHASE OF CONSTRUCTION.



GRAPHIC SCALE

0

PLANS

0

PROFILE (HORIZONTAL)

0

PROFILE (VERTICAL)

ROADSIDE ENVIRONMENTAL UNIT
 DIVISION OF HIGHWAYS
 STATE OF NORTH CAROLINA

Prepared in the Office of:
ROADSIDE ENVIRONMENTAL UNIT
 1 South Wilmington St.
 Raleigh, NC 27611
2002 STANDARD SPECIFICATIONS

Roadway Standard Drawings

The following roadway metric standards as appear in "Roadway Standard Drawings"- Roadway Design Unit - N. C. Department of Transportation - Raleigh, N. C., dated January 20, 2002 and the latest revision thereto are applicable to this project and by reference hereby are considered a part of these plans.

1605.01 Temporary Silt Fence	1633.01 Temporary Rock Silt Check Type A
1606.01 Special Sediment Control Fence	1633.02 Temporary Rock Silt Check Type B
1630.03 Temporary Silt Ditch	1634.02 Temporary Rock Sediment Dam Type B
1632.02 Rock Inlet Sediment Trap Type B	1635.02 Rock Pipe Inlet Sediment Trap Type B
1632.03 Rock Inlet Sediment Trap Type C	

02-OCT-2007 14:40
 m:\projects\3119a\design\3119a.ec.atlshtr.dgn
 m:\projects\3119a\design\3119a.ec.atlshtr.dgn
 REVISIONS

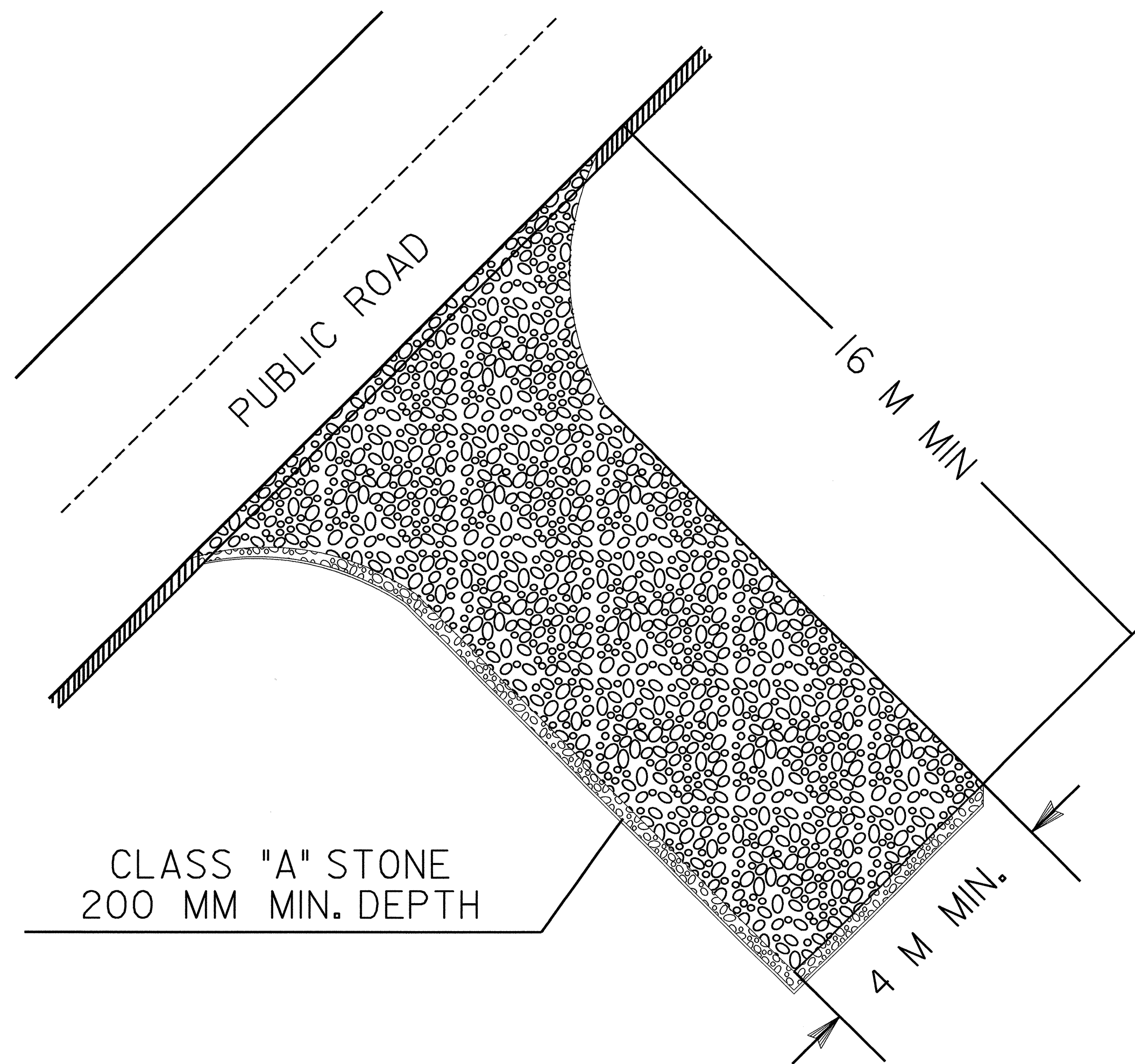


PROJECT REFERENCE NO. U-3119A	SHEET NO. EC-2
R/W SHEET NO.	
ROADWAY DESIGN ENGINEER	HYDRAULICS ENGINEER

TEMPORARY GRAVEL CONSTRUCTION ENTRANCE

NOTES:

1. TURNING RADIUS SUFFICIENT TO ACCOMODATE LARGE TRUCKS SHALL BE PROVIDED.
2. ENTRANCE(S) SHOULD BE LOCATED TO PROVIDE FOR UTILIZATION BY ALL CONSTRUCTION VEHICLES.
3. MUST BE MAINTAINED IN A CONDITION WHICH WILL PREVENT TRACKING OR DIRECT FLOW OF MUD ONTO STREETS. PERIODIC TOPDRESSING WITH STONE WILL BE NECESSARY.
4. ANY MATERIAL TRACKED ONTO THE ROADWAY MUST BE CLEANED UP IMMEDIATELY.
5. GRAVEL CONSTRUCTION ENTRANCE SHALL BE LOCATED AT ALL POINTS OF INGRESS AND EGRESS UNTIL SITE IS STABILIZED. FREQUENT CHECKS OF THE DEVICE AND TIMELY MAINTENANCE MUST BE PROVIDED.
6. NUMBER AND LOCATION OF CONSTRUCTION ENTRANCES TO BE DETERMINED BY THE ENGINEER

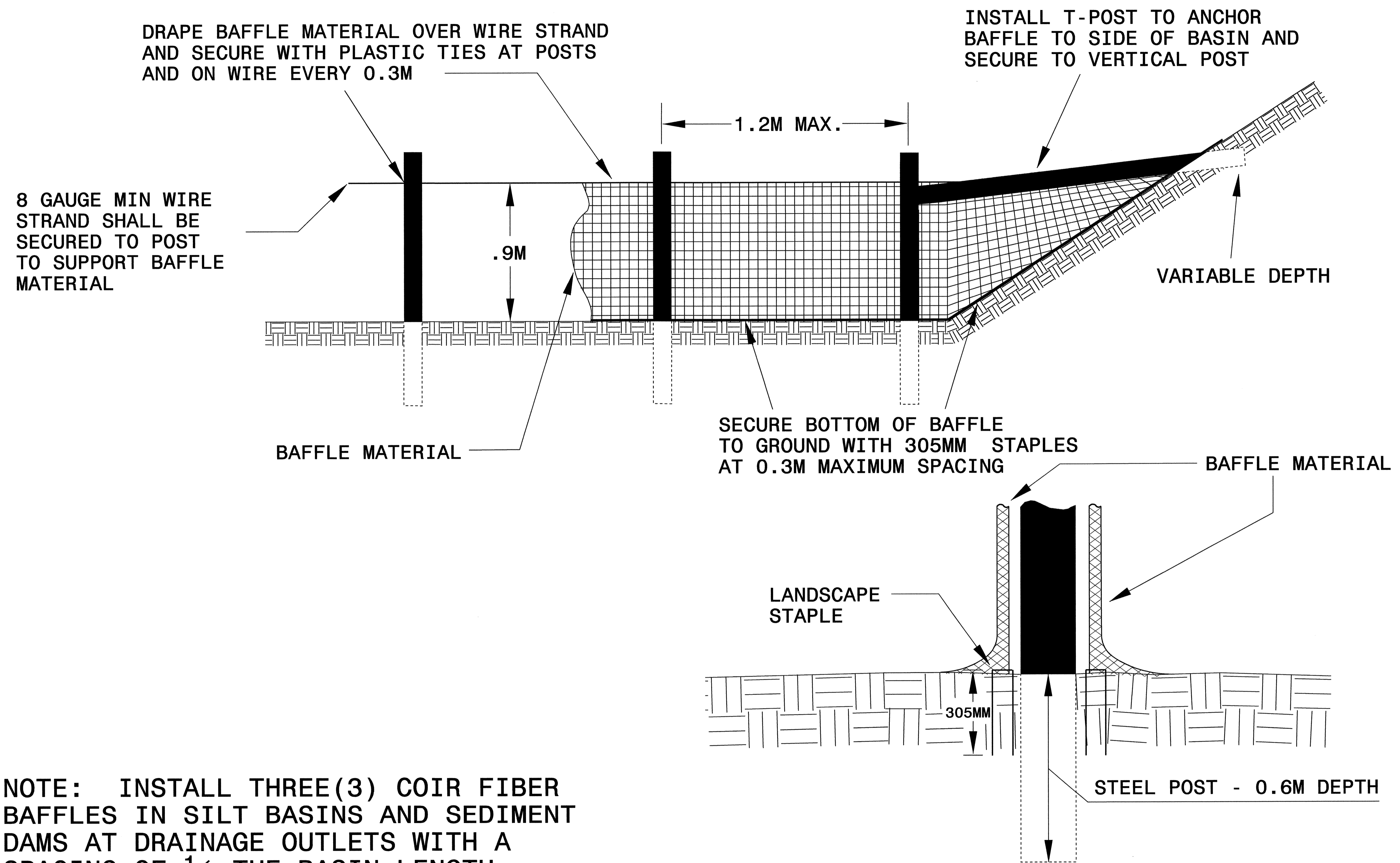


NOTE: FILTER FABRIC TO BE PLACED BENEATH STONE



PROJECT REFERENCE NO. U-3119A	SHEET NO. EC-2A
R/W SHEET NO.	
ROADWAY DESIGN ENGINEER	HYDRAULICS ENGINEER

COIR FIBER BAFFLE DETAIL



NOTE: INSTALL THREE(3) COIR FIBER BAFFLES IN SILT BASINS AND SEDIMENT DAMS AT DRAINAGE OUTLETS WITH A SPACING OF $\frac{1}{4}$ THE BASIN LENGTH. TWO(2) COIR FIBER BAFFLES CAN BE INSTALLED IN SILT BASINS AND DAMS LESS THAN 6 M IN LENGTH WITH A SPACING OF $\frac{1}{3}$ THE BASIN LENGTH.

BAFFLE MATERIAL SHALL BE SECURED TO THE BOTTOM AND SIDES OF BASIN USING 305MM LANDSCAPE STAPLES

CLEARING AND GRUBBING
EROSION CONTROL FOR
CONSTRUCTION SHEET 4

NOTE:
PLACE TEMPORARY ROCK SILT CHECKS TYPE-A AT
DRAINAGE OUTLETS.

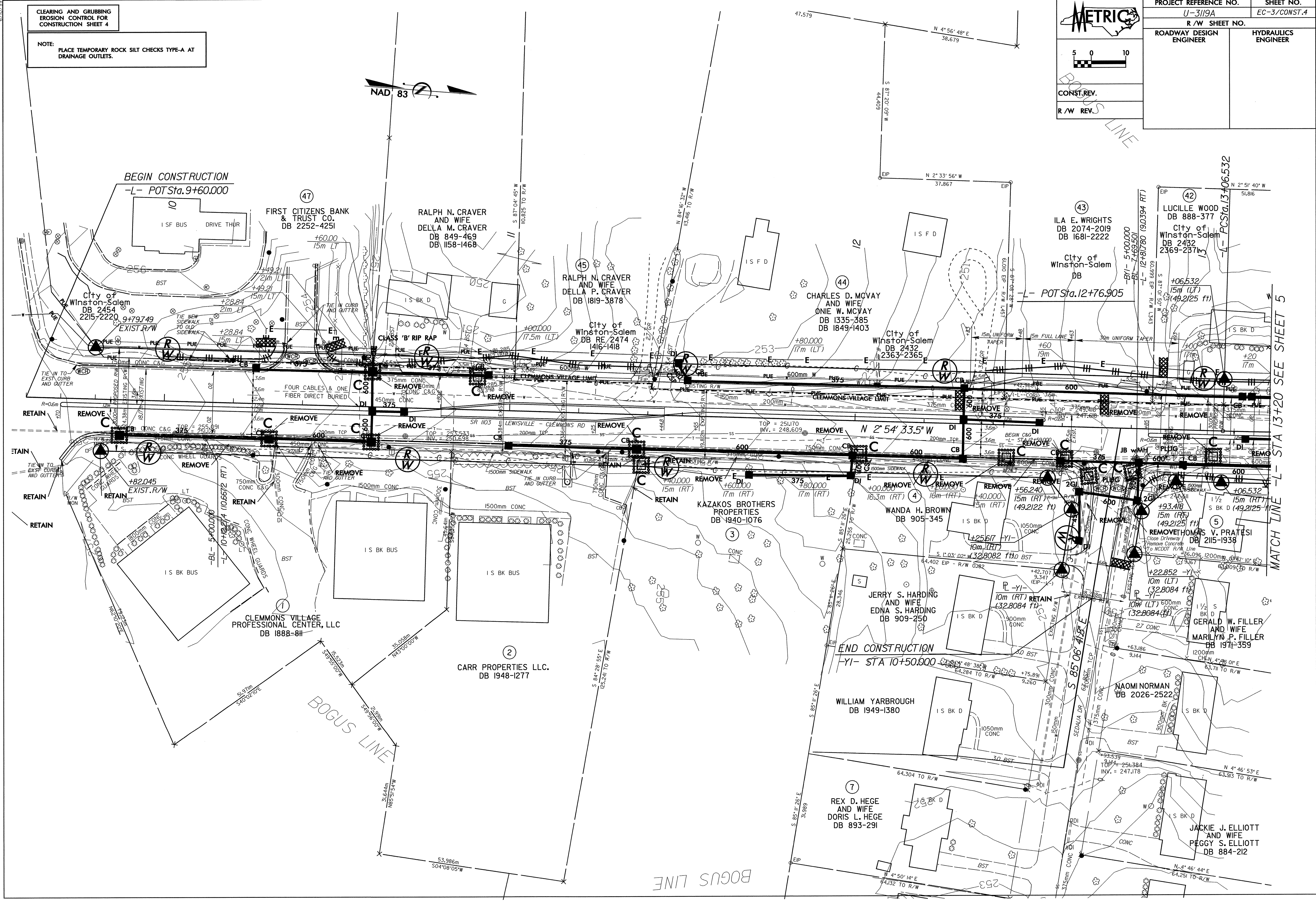
METRIC

5 0 10

CONST. REV.

R/W REV.

PROJECT REFERENCE NO. U-3119A	SHEET NO. EC-3/CONST.4
ROADWAY DESIGN ENGINEER	HYDRAULICS ENGINEER

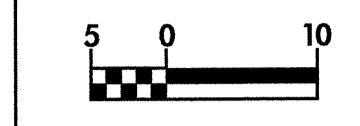


MATCH LINE - L- STA 13+20 SEE SHEET 5

CLEARING AND GRUBBING
EROSION CONTROL FOR
CONSTRUCTION SHEET 5

INSTALL FILTER FABRIC UNDER
TEMPORARY ROCK SILT CHECK(S)
TYPE A IN PERMITTED WETLANDS.

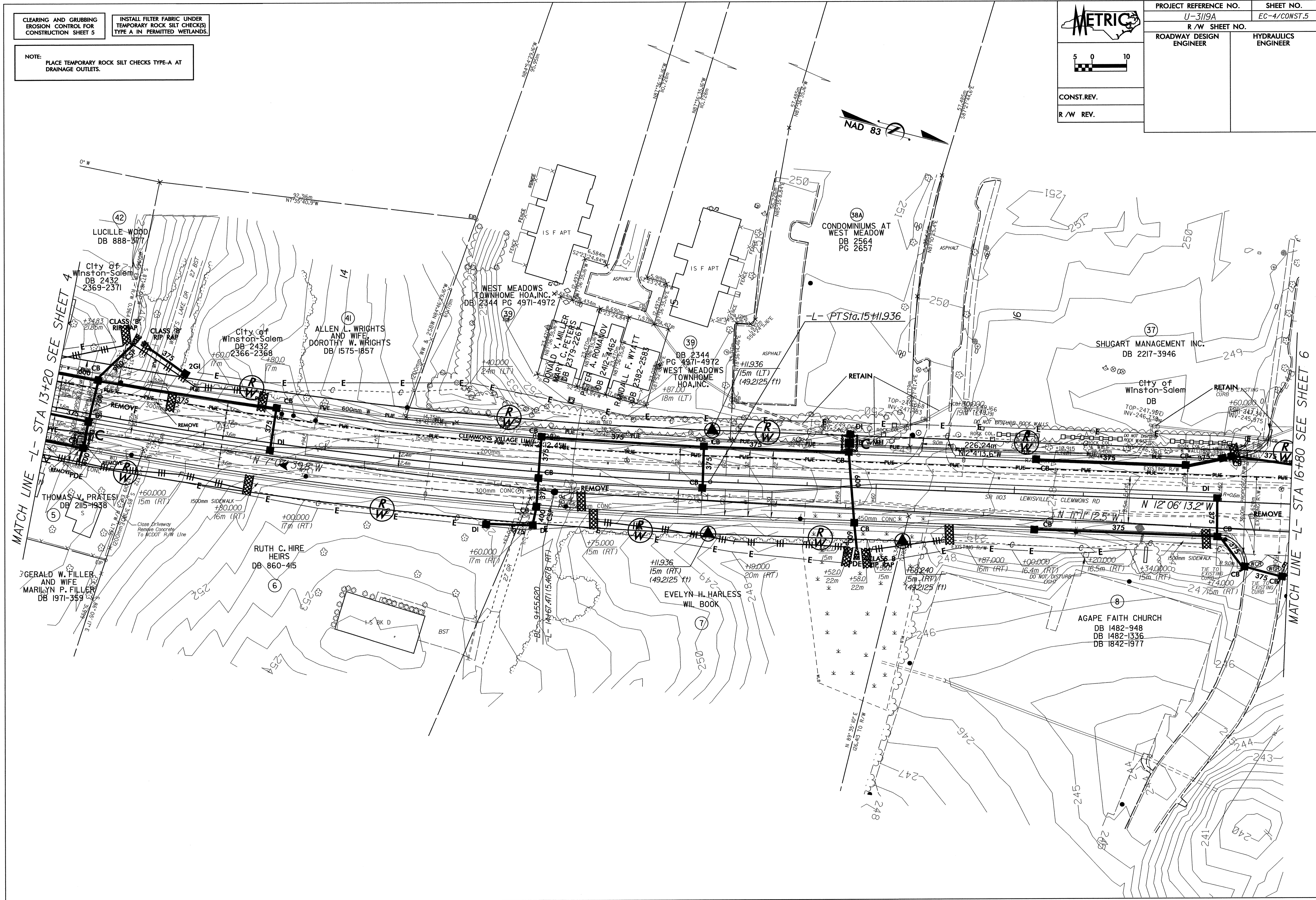
NOTE:
PLACE TEMPORARY ROCK SILT CHECKS TYPE-A AT
DRAINAGE OUTLETS.



CONST.REV.

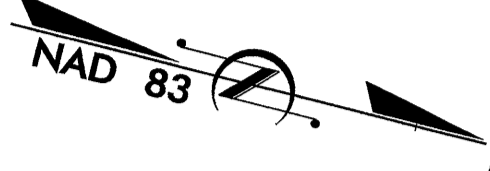
R/W REV.

PROJECT REFERENCE NO. U-3119A	SHEET NO. EC-4/CONST.5
R/W SHEET NO.	
ROADWAY DESIGN ENGINEER	HYDRAULICS ENGINEER



MATCH LINE -L- STA 13+20 SEE SHEET 4

MATCH LINE -L- STA 16+80 SEE SHEET 6



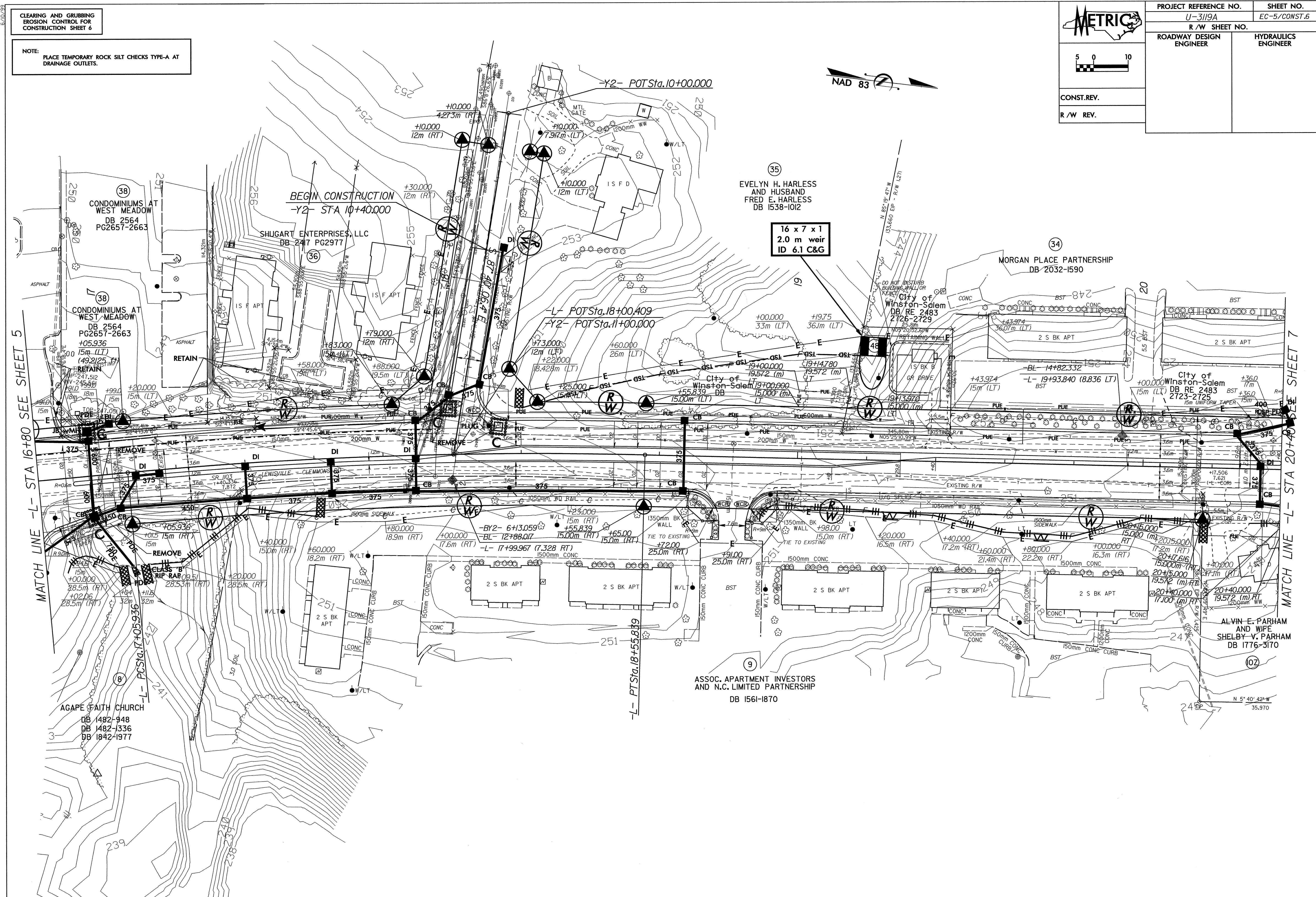
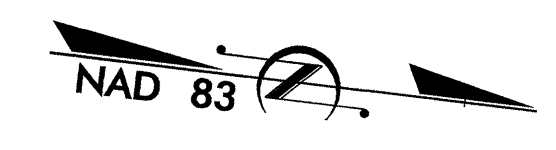
CLEARING AND GRUBBING
EROSION CONTROL FOR
CONSTRUCTION SHEET 6

NOTE:
PLACE TEMPORARY ROCK SILT CHECKS TYPE-A AT
DRAINAGE OUTLETS.

METRIC

CONST. REV.
R/W REV.

PROJECT REFERENCE NO. U-3119A	SHEET NO. EC-5/CONST.6
R/W SHEET NO.	
ROADWAY DESIGN ENGINEER	HYDRAULICS ENGINEER



MATCH LINE -L- STA 16+80 SEE SHEET 5

MATCH LINE -L- STA 20+00 SEE SHEET 7

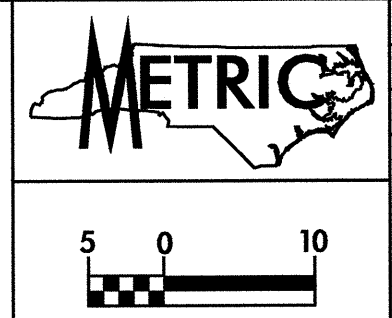
ASSOC. APARTMENT INVESTORS
AND N.C. LIMITED PARTNERSHIP
DB 1561-1870

AGAPE FAITH CHURCH
DB 1482-948
DB 1482-336
DB 1842-1977

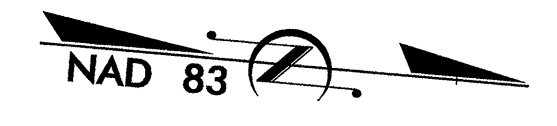
N 5° 40' 42" W
35.970

CLEARING AND GRUBBING
EROSION CONTROL FOR
CONSTRUCTION SHEET 7

NOTE:
PLACE TEMPORARY ROCK SILT CHECKS TYPE-A AT
DRAINAGE OUTLETS.

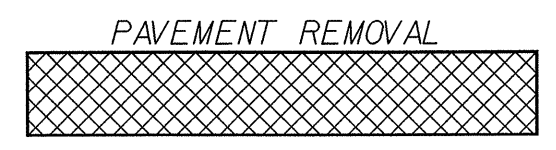
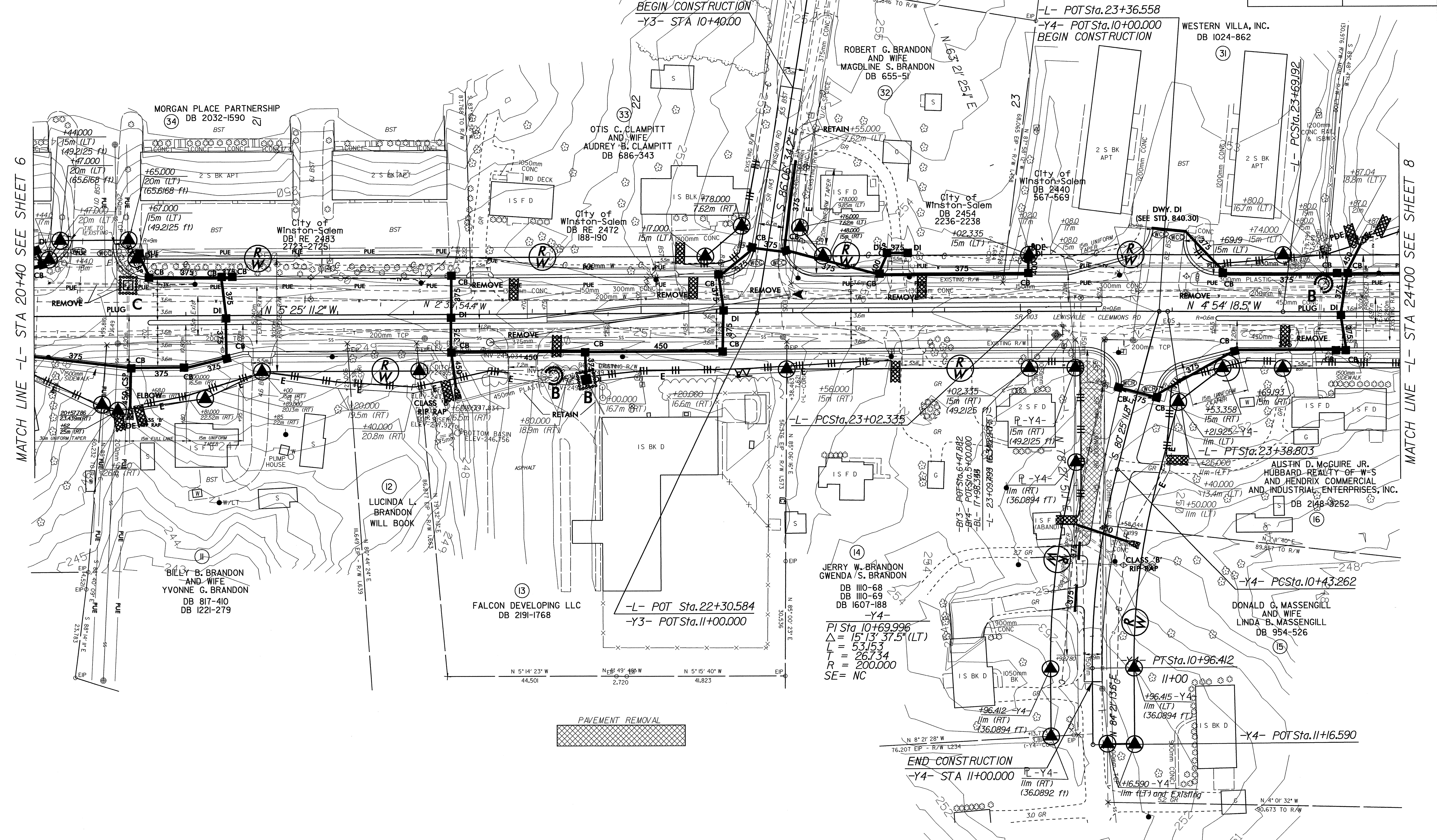


PROJECT REFERENCE NO. U-3119A	SHEET NO. EC-6/CONST.7
R/W SHEET NO.	
ROADWAY DESIGN ENGINEER	HYDRAULICS ENGINEER
CONST. REV.	
R/W REV.	



MATCH LINE -L- STA 20+40 SEE SHEET 6

MATCH LINE -L- STA 24+00 SEE SHEET 8



(14)
 JERRY W. BRANDON
 GWENDA S. BRANDON
 DB 110-68
 DB 110-69
 DB 1607-188
 -Y4-
 $PI\ Sta\ 10+69.996$
 $\Delta = 15' 13" 37.5" (LT)$
 $L = 53.153$
 $T = 26.734$
 $R = 200.000$
 $SE = NC$

END CONSTRUCTION
 -Y4- STA 11+00.00
 P-Y4-
 11m (RT)
 (36.0892 ft)

-Y4- POT Sta. 11+16.590

DONALD G. MASSENGILL
 AND WIFE
 LINDA B. MASSENGILL
 DB 954-526

AUSTIN D. MCGUIRE JR.
 HUBBARD REALTY OF W-S
 AND HENDRIX COMMERCIAL
 AND INDUSTRIAL ENTERPRISES, INC.
 DB 2148-3252

City of
 Winston-Salem
 DB 2440
 567-569

ROBERT G. BRANDON
 AND WIFE
 MAGBLINE S. BRANDON
 DB 655-51

OTIS C. CLAMPITT
 AND WIFE
 AUDREY B. CLAMPITT
 DB 686-343

City of
 Winston-Salem
 DB RE 2472
 188-190

MORGAN PLACE PARTNERSHIP
 (34)
 DB 2032-1590

BILLY B. BRANDON
 AND WIFE
 YVONNE G. BRANDON
 DB 817-410
 DB 1221-279

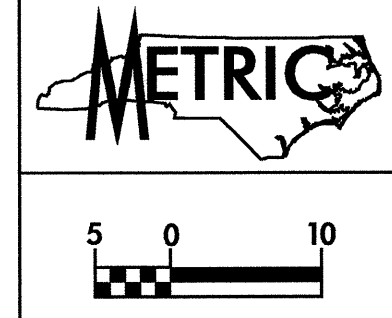
(12)
 LUCINDA L.
 BRANDON
 WILL BOOK

(13)
 FALCON DEVELOPING LLC
 DB 2191-1768

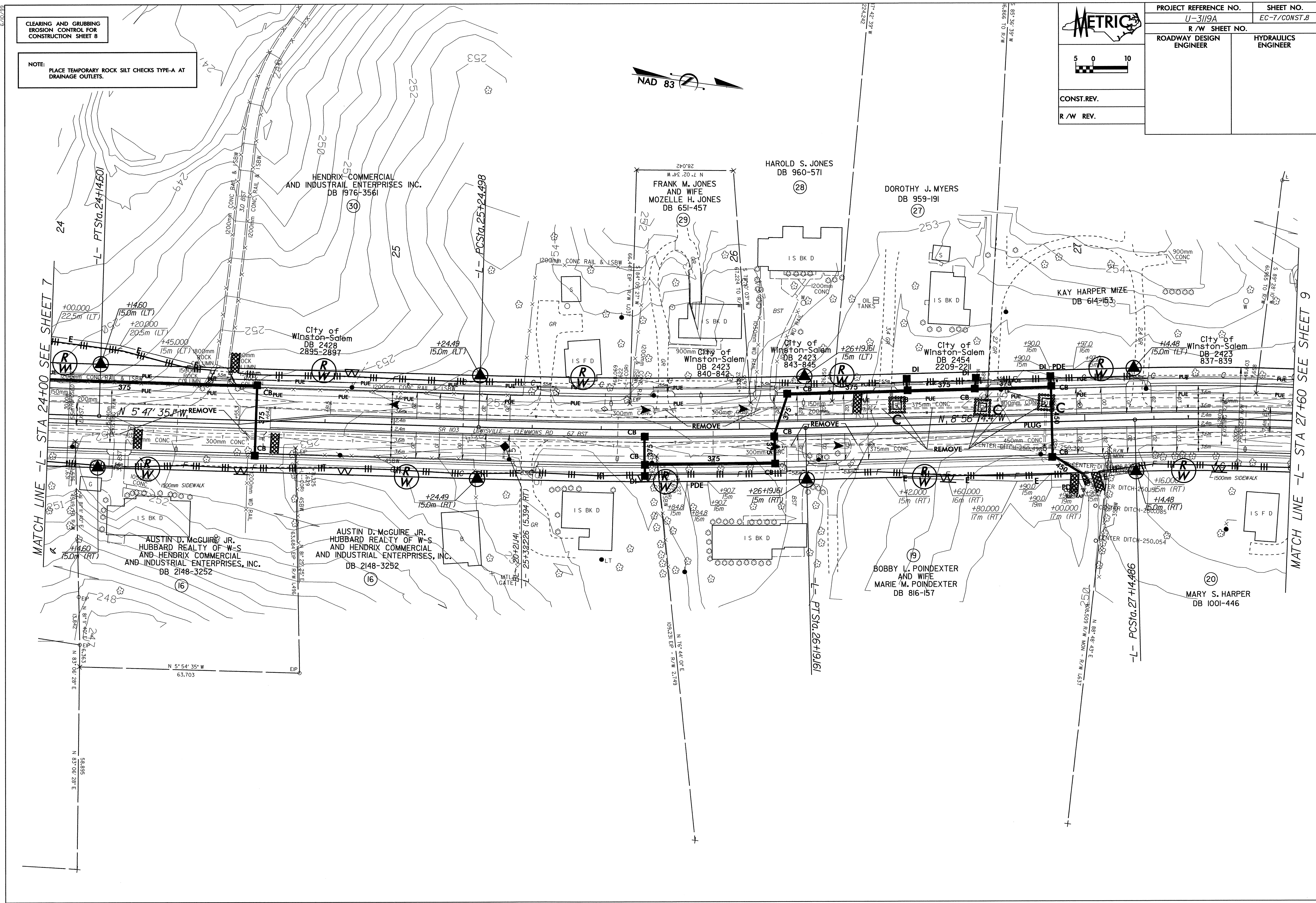
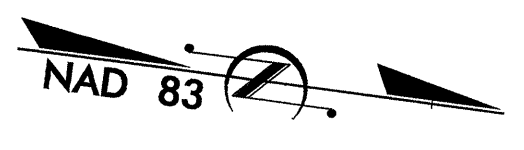
WESTERN VILLA, INC.
 DB 1024-862

CLEARING AND GRUBBING
EROSION CONTROL FOR
CONSTRUCTION SHEET 8

NOTE:
PLACE TEMPORARY ROCK SILT CHECKS TYPE-A AT
DRAINAGE OUTLETS.



PROJECT REFERENCE NO. U-3119A		SHEET NO. EC-7/CONST.8	
ROADWAY DESIGN ENGINEER		HYDRAULICS ENGINEER	
CONST.REV.		R/W REV.	

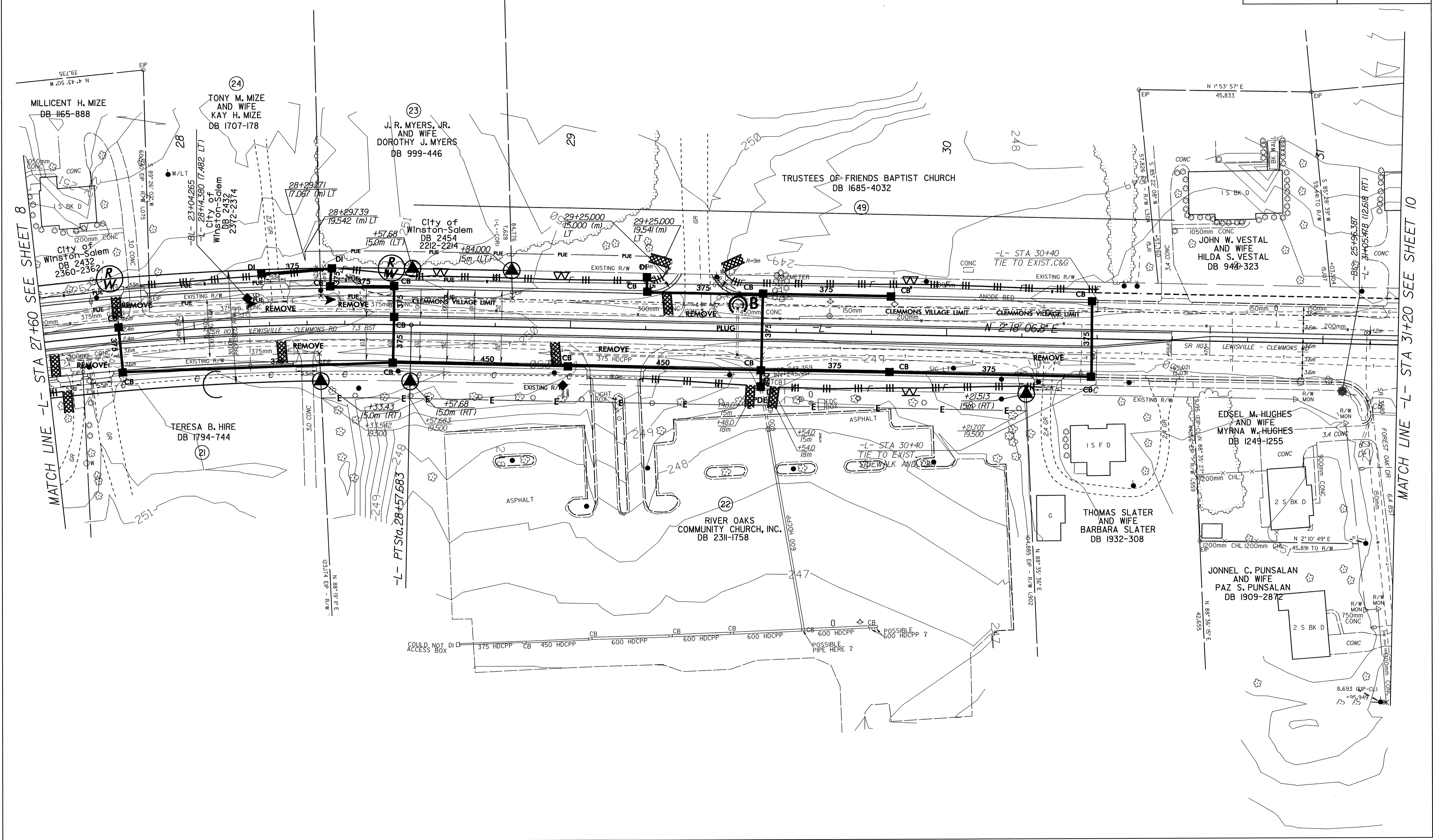



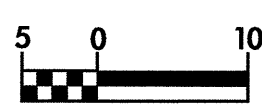
CLEARING AND GRUBBING
EROSION CONTROL FOR
CONSTRUCTION SHEET 9

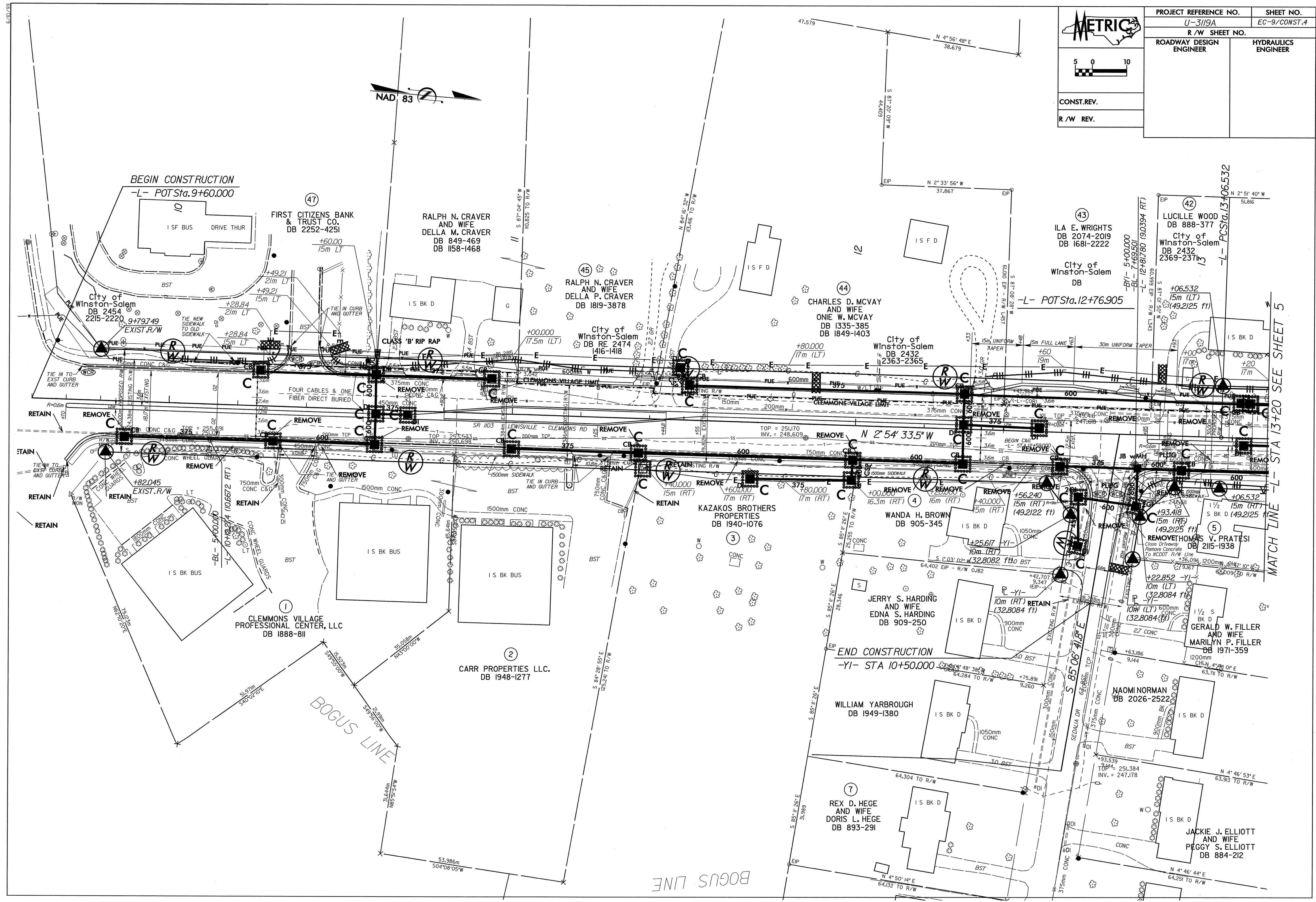
NOTE:
PLACE TEMPORARY ROCK SILT CHECKS TYPE-A AT
DRAINAGE OUTLETS.



PROJECT REFERENCE NO. U-3119A		SHEET NO. EC-8/CONST.9	
R/W SHEET NO.			
ROADWAY DESIGN ENGINEER		HYDRAULICS ENGINEER	
CONST. REV.			
R/W REV.			



	PROJECT REFERENCE NO.	SHEET NO.
	U-3119A	EC-9/CONST.4
	R/W SHEET NO.	
	ROADWAY DESIGN ENGINEER	HYDRAULICS ENGINEER
CONST.REV.		
R/W REV.		



MATCH LINE -L- STA 13+20 SEE SHEET 5

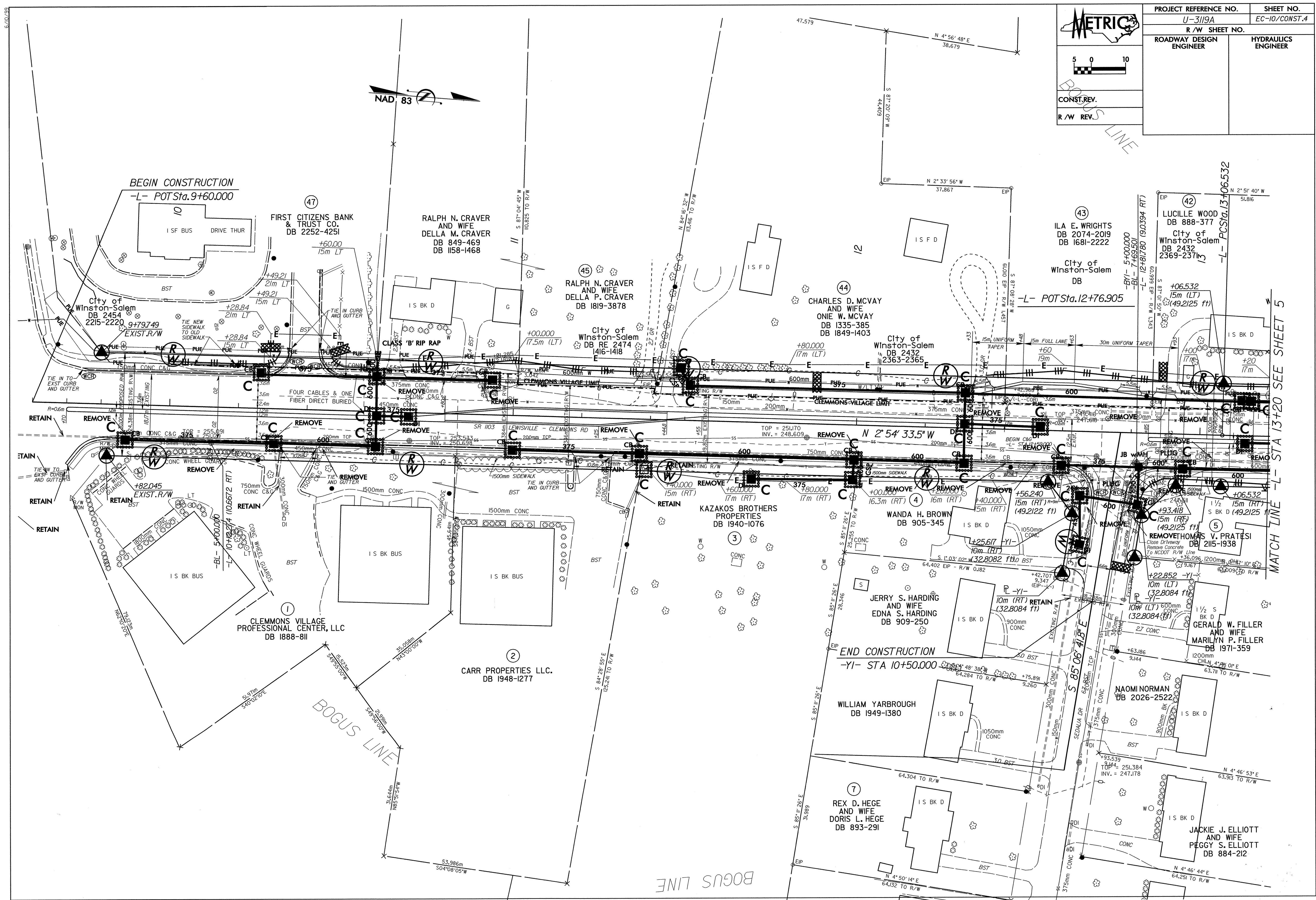
METRIC

5 0 10

CONST. REV.

R/W REV.

PROJECT REFERENCE NO. U-3119A	SHEET NO. EC-10/CONST.4
R/W SHEET NO.	
ROADWAY DESIGN ENGINEER	HYDRAULICS ENGINEER

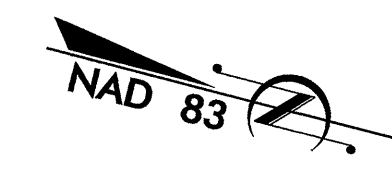
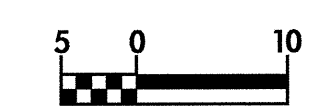


MATCH LINE - L- STA 13+20 SEE SHEET 5

INSTALL FILTER FABRIC UNDER
TEMPORARY ROCK SILT CHECK(S)
TYPE A IN PERMITTED WETLANDS.



PROJECT REFERENCE NO.		SHEET NO.	
U-3119A		EC-II/CONST.5	
R/W SHEET NO.			
ROADWAY DESIGN ENGINEER		HYDRAULICS ENGINEER	
CONST.REV.		R/W REV.	



MATCH LINE -L- STA 13+20 SEE SHEET 4

MATCH LINE -L- STA 16+80 SEE SHEET 6

42
LUCILLE WOOD
DB 888-377
City of Winston-Salem
DB 2432
2369-2371

City of Winston-Salem
DB 2432
2366-2368

41
ALLEN L. WRIGHTS
AND WIFE
DOROTHY W. WRIGHTS
DB 1575-1857

WEST MEADOWS
TOWNHOME HOA, INC.
DB 2344 PG 4971-4972

38A
CONDOMINIUMS AT
WEST MEADOW
DB 2564
PG 2657

37
SHUGART MANAGEMENT INC.
DB 2217-3946

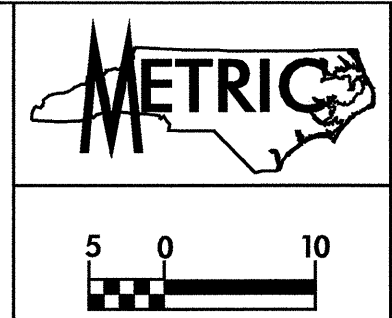
City of Winston-Salem
DB

5
THOMAS V. PRATESI
AND WIFE
MARILYN P. FILLER
DB 1971-359

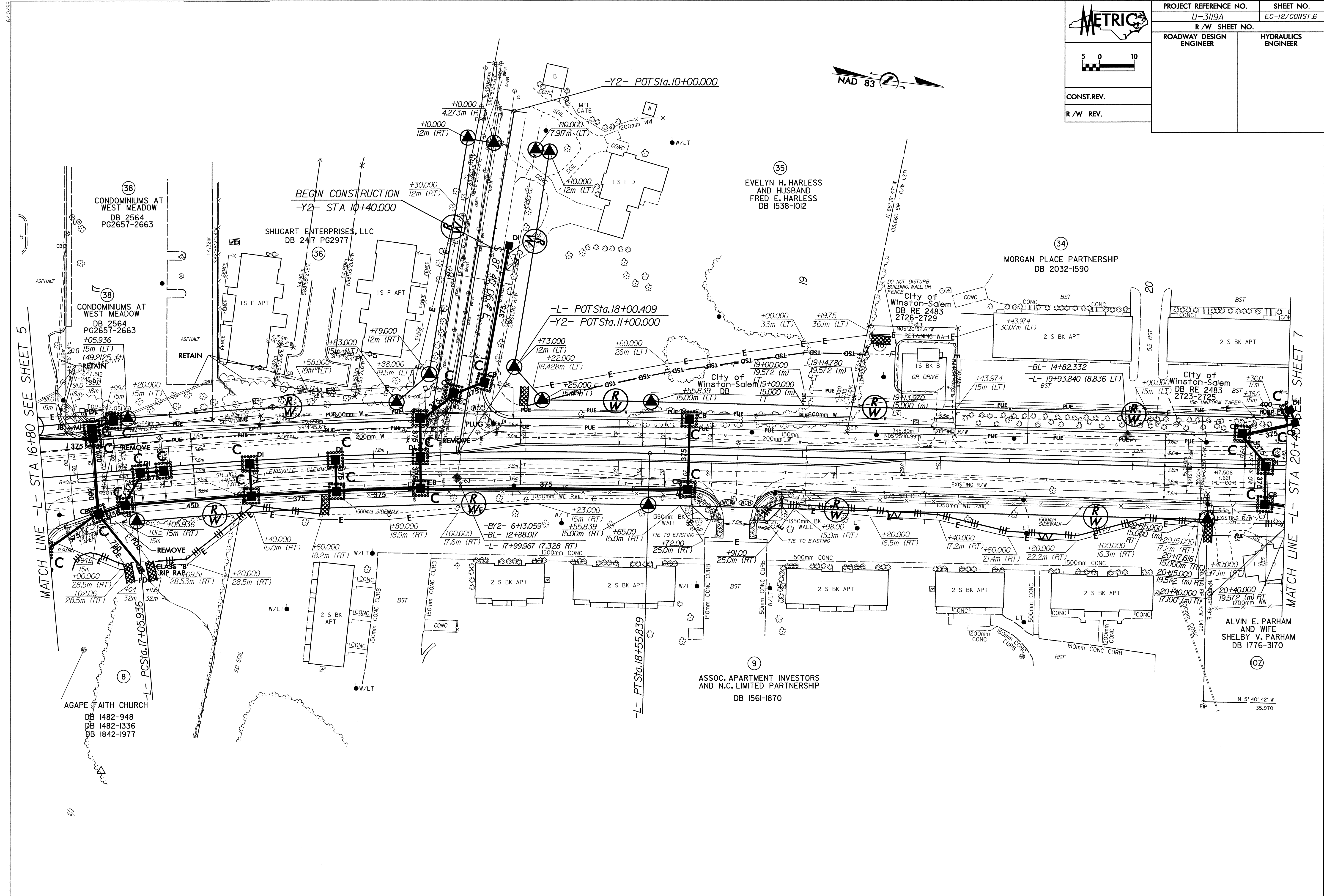
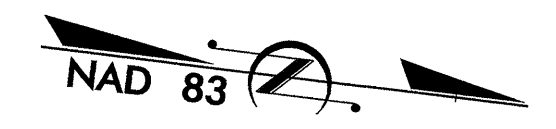
6
RUTH C. HIRE
HEIRS
DB 860-415

7
EVELYN H. HARLESS
WIL BOOK

8
ACAPE FAITH CHURCH
DB 1482-948
DB 1482-1336
DB 1842-1977



PROJECT REFERENCE NO.		SHEET NO.
U-3119A		EC-12/CONST.6
R/W SHEET NO.		
ROADWAY DESIGN ENGINEER	HYDRAULICS ENGINEER	
CONST.REV.		
R/W REV.		



5/10/99

MATCH LINE -L- STA 16+80 SEE SHEET 5

MATCH LINE -L- STA 20+40 SEE SHEET 7

38
CONDOMINIUMS AT WEST MEADOW
DB 2564
PG2657-2663

38
CONDOMINIUMS AT WEST MEADOW
DB 2564
PG2657-2663

SHUGART ENTERPRISES, LLC
DB 247 PG2977

35
EVELYN H. HARLESS
AND HUSBAND
FRED E. HARLESS
DB 1538-1012

34
MORGAN PLACE PARTNERSHIP
DB 2032-1590

City of
Winston-Salem
DB RE 2483
2726-2729

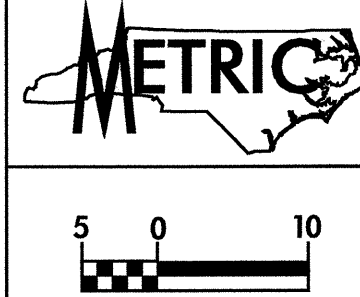
City of
Winston-Salem
DB RE 2483
2723-2725

8
AGAPE FAITH CHURCH
DB 1482-948
DB 1482-1336
DB 1842-1977

9
ASSOC. APARTMENT INVESTORS
AND N.C. LIMITED PARTNERSHIP
DB 1561-1870

102
ALVIN E. PARHAM
AND WIFE
SHELBY V. PARHAM
DB 1776-3170

N 5° 40' 42" W
35.970

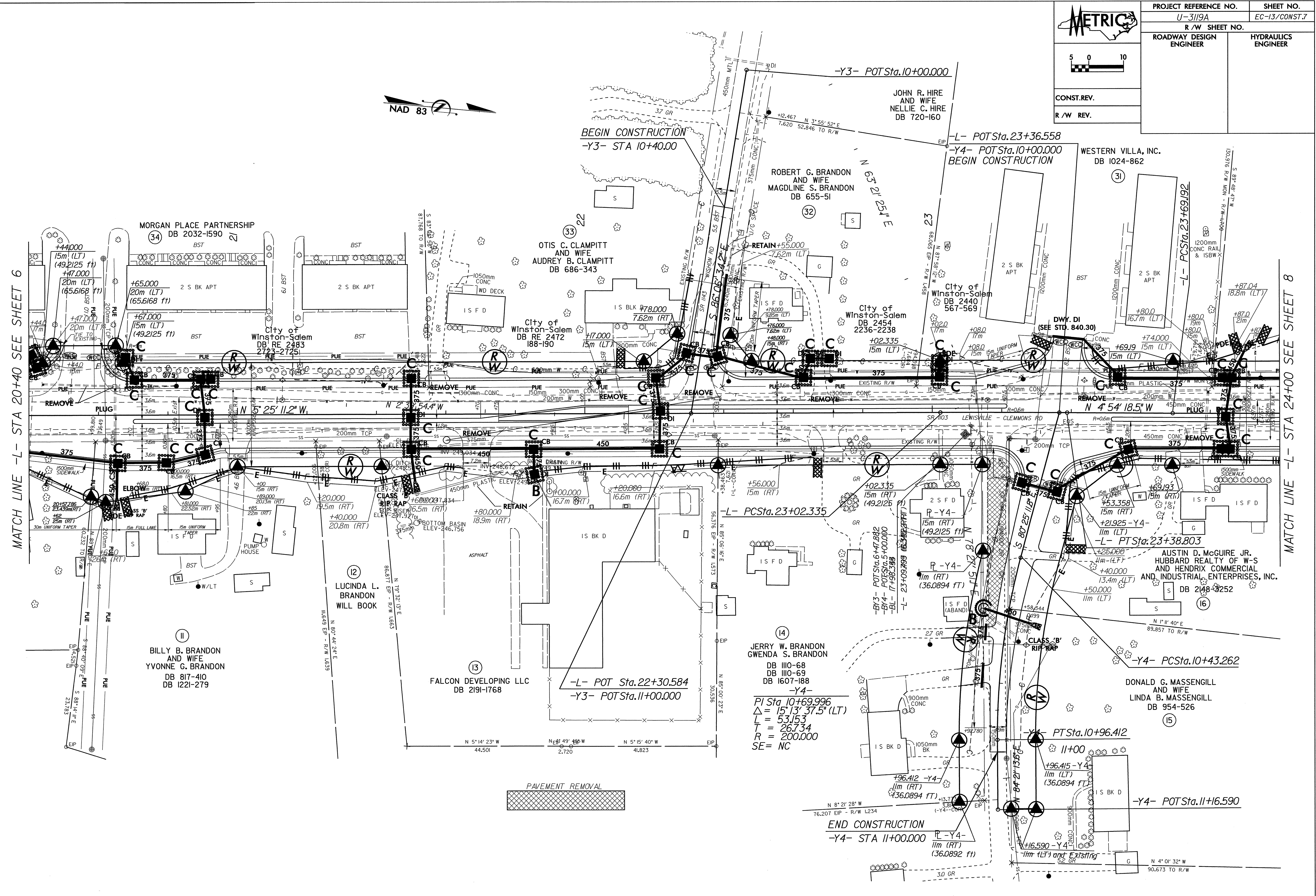


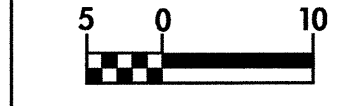
PROJECT REFERENCE NO.		SHEET NO.
U-3119A		EC-13/CONST.7
R/W SHEET NO.		
ROADWAY DESIGN ENGINEER	HYDRAULICS ENGINEER	
CONST. REV.		
R/W REV.		



MATCH LINE -L- STA 20+40 SEE SHEET 6

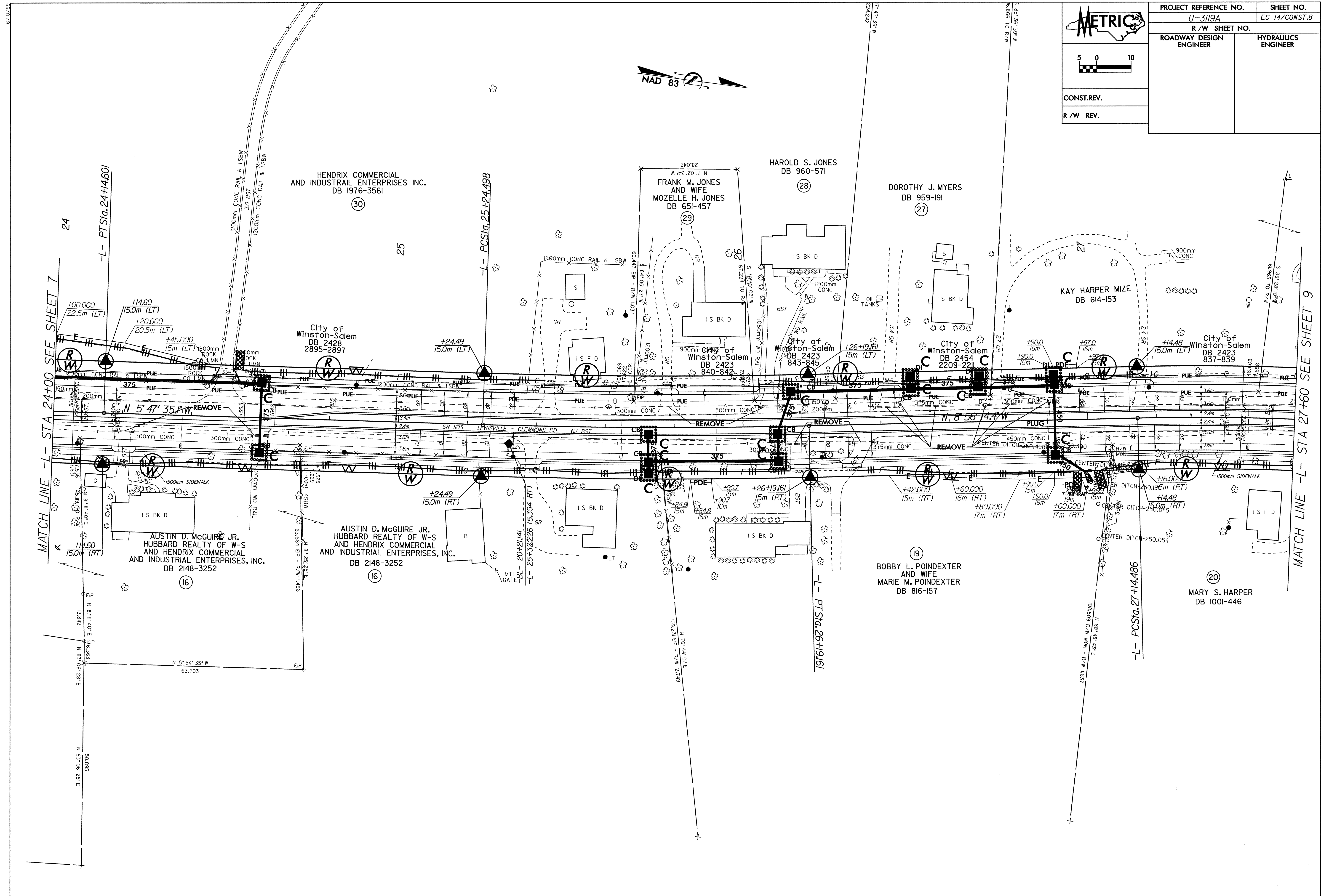
MATCH LINE -L- STA 24+00 SEE SHEET 8





CONST. REV.
R/W REV.

PROJECT REFERENCE NO. U-3119A		SHEET NO. EC-14/CONST.8	
R/W SHEET NO.			
ROADWAY DESIGN ENGINEER		HYDRAULICS ENGINEER	



MATCH LINE -L- STA 24+00 SEE SHEET 7

MATCH LINE -L- STA 27+60 SEE SHEET 9

-L- PTSta. 24+14.601

-L- PCSta. 25+24.498

-L- PTSta. 26+19.161

-L- PCSta. 27+14.486

+00.000
22.5m (LT)

+14.60
15.0m (LT)

+20.000
20.5m (LT)

+45.000
15m (LT)

+24.49
15.0m (LT)

+26+19.161
15m (LT)

+14.60
15.0m (RT)

+24.49
15.0m (RT)

+90.7
15m

+26+19.161
15m (RT)

+42.000
15m (RT)

+60.000
16m (RT)

+90.0
15m

+90.0
19m

+80.000
17m (RT)

+16.000
15m (RT)

+14.48
15.0m (RT)

N 81° 40' E
13.842

N 83° 06' 28" E
58.895

N 5° 54' 35" W
63.703

N 81° 25' 25" E
63.581

N 81° 40' E
13.842

N 83° 06' 28" E
58.895

N 5° 54' 35" W
63.703

N 81° 25' 25" E
63.581

N 81° 40' E
13.842

N 83° 06' 28" E
58.895

N 5° 54' 35" W
63.703

N 81° 25' 25" E
63.581

N 81° 40' E
13.842

N 83° 06' 28" E
58.895

N 5° 54' 35" W
63.703

N 81° 25' 25" E
63.581

N 81° 40' E
13.842

N 83° 06' 28" E
58.895

N 5° 54' 35" W
63.703

N 81° 25' 25" E
63.581

N 81° 40' E
13.842

N 83° 06' 28" E
58.895

N 5° 54' 35" W
63.703

N 81° 25' 25" E
63.581

N 81° 40' E
13.842

N 83° 06' 28" E
58.895

N 5° 54' 35" W
63.703

N 81° 25' 25" E
63.581

N 81° 40' E
13.842

N 83° 06' 28" E
58.895

N 5° 54' 35" W
63.703

N 81° 25' 25" E
63.581

N 81° 40' E
13.842

N 83° 06' 28" E
58.895

N 5° 54' 35" W
63.703

N 81° 25' 25" E
63.581

N 81° 40' E
13.842

N 83° 06' 28" E
58.895

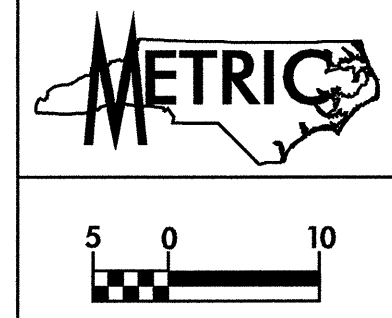
N 5° 54' 35" W
63.703

N 81° 25' 25" E
63.581

N 81° 40' E
13.842

N 83° 06' 28" E
58.895

N 5° 54' 35" W
63.703



PROJECT REFERENCE NO.		SHEET NO.	
U-3119A		EC-15/CONST.9	
R/W SHEET NO.			
ROADWAY DESIGN ENGINEER		HYDRAULICS ENGINEER	
CONST. REV.			
R/W REV.			

