

TIP PROJECT: B-3826

WBS NUMBER: 33278.1.1

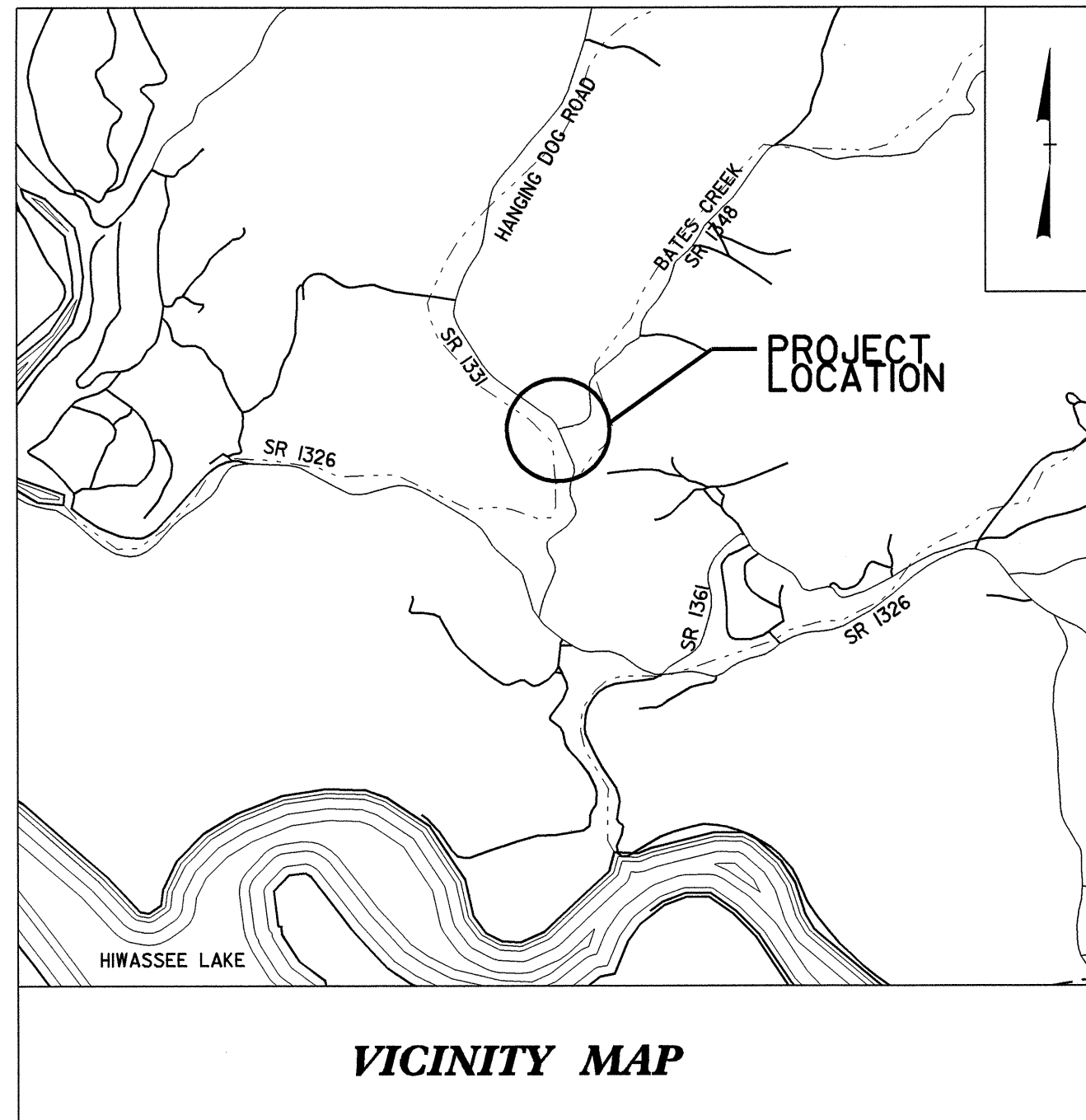
T.I.P. NO.	SHEET NO.
B-3826	UO-1

STATE OF NORTH CAROLINA
DIVISION OF HIGHWAYS

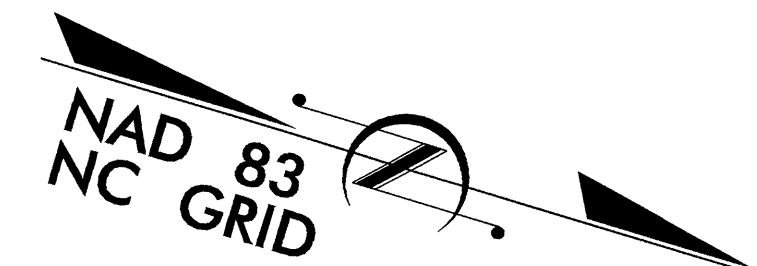
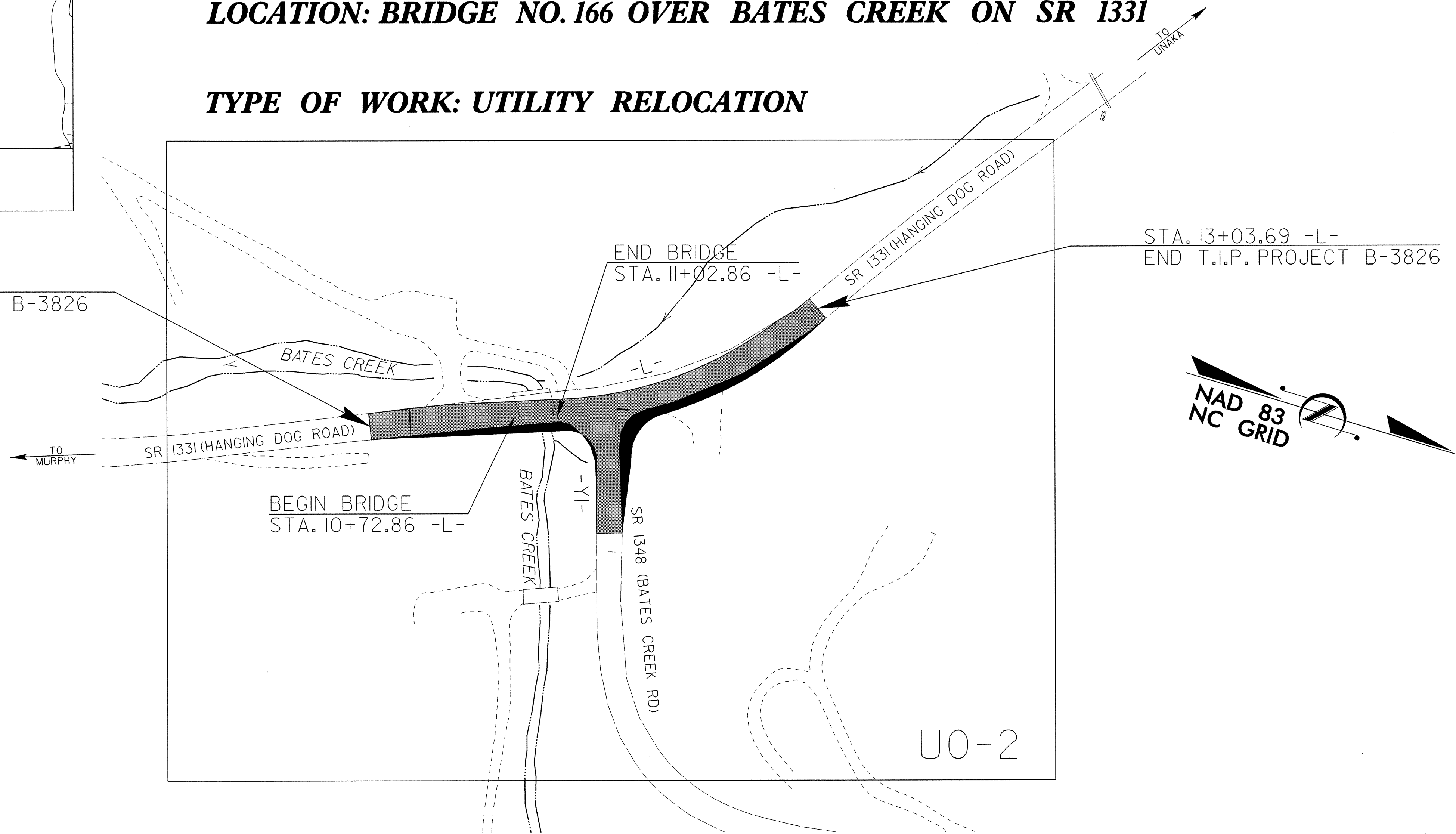
**UTILITIES BY OTHERS PLANS
CHEROKEE COUNTY**

LOCATION: BRIDGE NO. 166 OVER BATES CREEK ON SR 1331

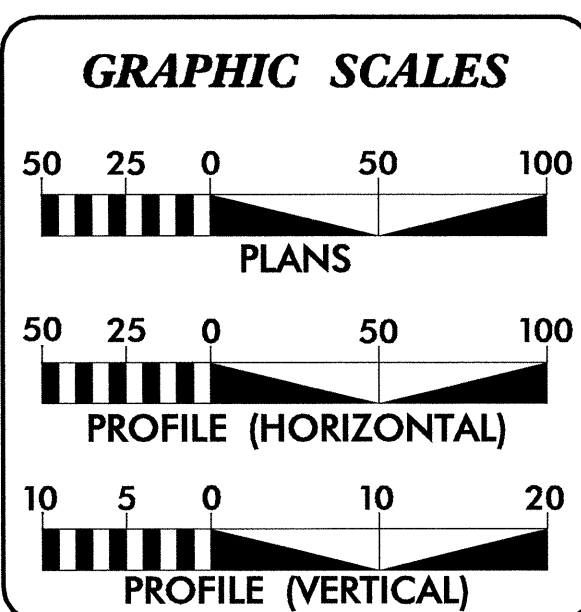
TYPE OF WORK: UTILITY RELOCATION



STA. 9+71.94 -L-
BEGIN T.I.P. PROJECT B-3826



CLEARING ON THIS PROJECT SHALL BE PERFORMED TO THE LIMITS ESTABLISHED BY METHOD II



INDEX OF SHEETS	
SHEET NO.	DESCRIPTION
UO-1	TITLE SHEET
UO-2	UTILITIES BY OTHERS PLAN SHEET

UTILITY OWNERS ON PROJECT
(1) BLUE RIDGE MOUNTAIN E.M.C. - ELECTRIC
(2) VERIZON - TELEPHONE

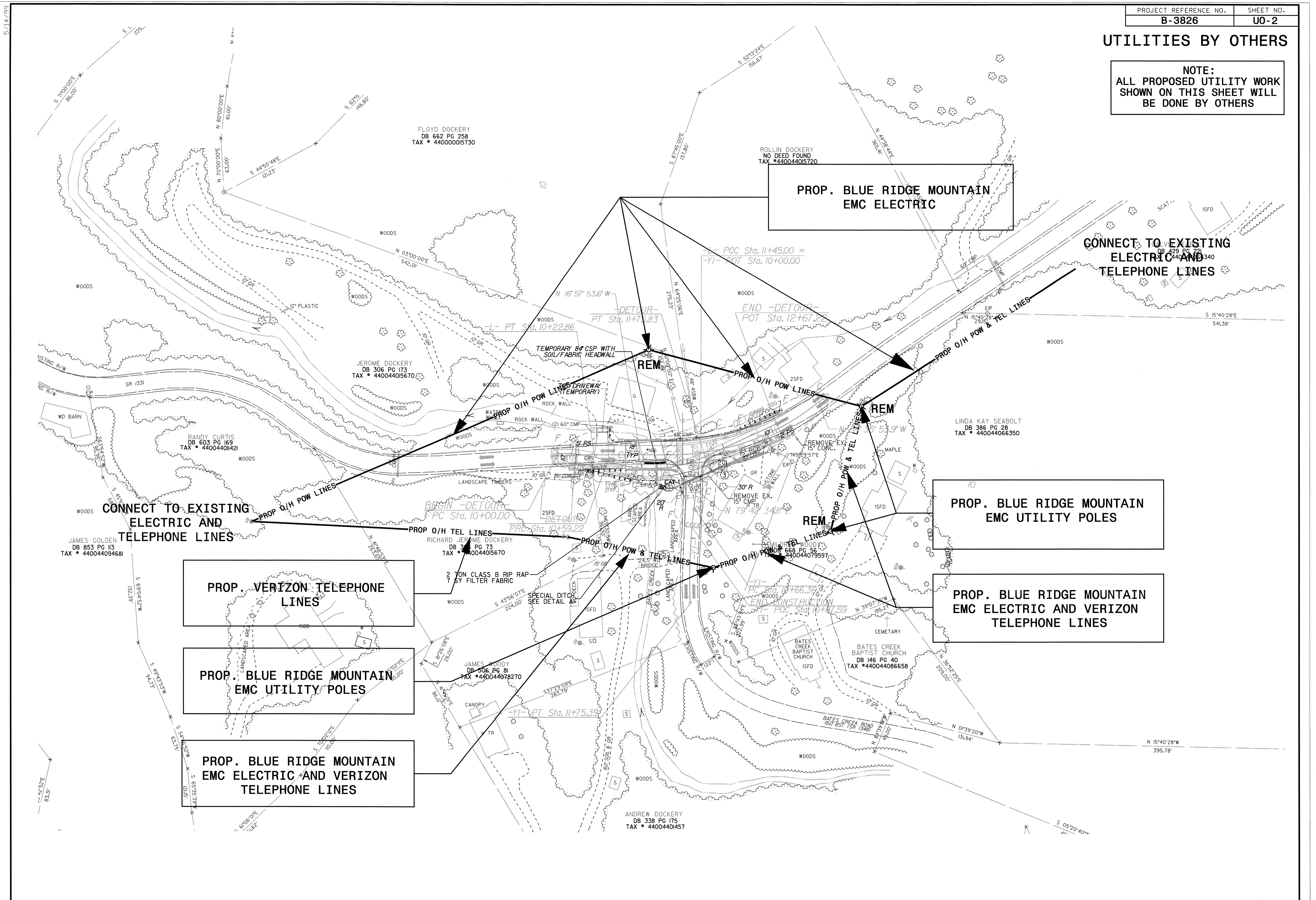
PREPARED IN THE OFFICE OF:
**DIVISION OF HIGHWAYS
PROJECT SERVICES
UTILITY SECTION**

1591 MAIL SERVICES CENTER
RALEIGH NC 27699-1591
PHONE (919) 250-4128
FAX (919) 250-4119

<u>Roger Worthington, P.E.</u>	UTILITIES SECTION ENGINEER
<u>Steve McKee, P.E.</u>	UTILITIES SQUAD LEADER PROJECT ENGINEER
<u>Donald Proper</u>	UTILITIES PROJECT DESIGNER

UTILITIES BY OTHERS

NOTE:
ALL PROPOSED UTILITY WORK
SHOWN ON THIS SHEET WILL
BE DONE BY OTHERS



**PROP. BLUE RIDGE MOUNTAIN
EMC ELECTRIC**

**CONNECT TO EXISTING
ELECTRIC AND
TELEPHONE LINES**

**PROP. BLUE RIDGE MOUNTAIN
EMC UTILITY POLES**

**PROP. BLUE RIDGE MOUNTAIN
EMC ELECTRIC AND VERIZON
TELEPHONE LINES**

**PROP. VERIZON TELEPHONE
LINES**

**PROP. BLUE RIDGE MOUNTAIN
EMC UTILITY POLES**

**PROP. BLUE RIDGE MOUNTAIN
EMC ELECTRIC AND VERIZON
TELEPHONE LINES**

FLOYD DOCKERY
DB 662 PG 258
TAX # 44000015730

ROLLIN DOCKERY
NO DEED FOUND
TAX # 440044015720

JEROME DOCKERY
DB 306 PG 173
TAX # 440044015670

RANDY CURTIS
DB 603 PG 169
TAX # 44004401421

LINDA KAY SEABOLT
DB 386 PG 28
TAX # 440044066350

JAMES GOLDEN
DB 853 PG 113
TAX # 440044094681

RICHARD JEROME DOCKERY
DB 306 PG 73
TAX # 440044015670

JAMES WOODY
DB 506 PG 81
TAX # 440044078270

ANDREW DOCKERY
DB 338 PG 175
TAX # 44004401457

BATES CREEK BAPTIST CHURCH
DB 146 PG 40
TAX # 440044086658

5/14/99