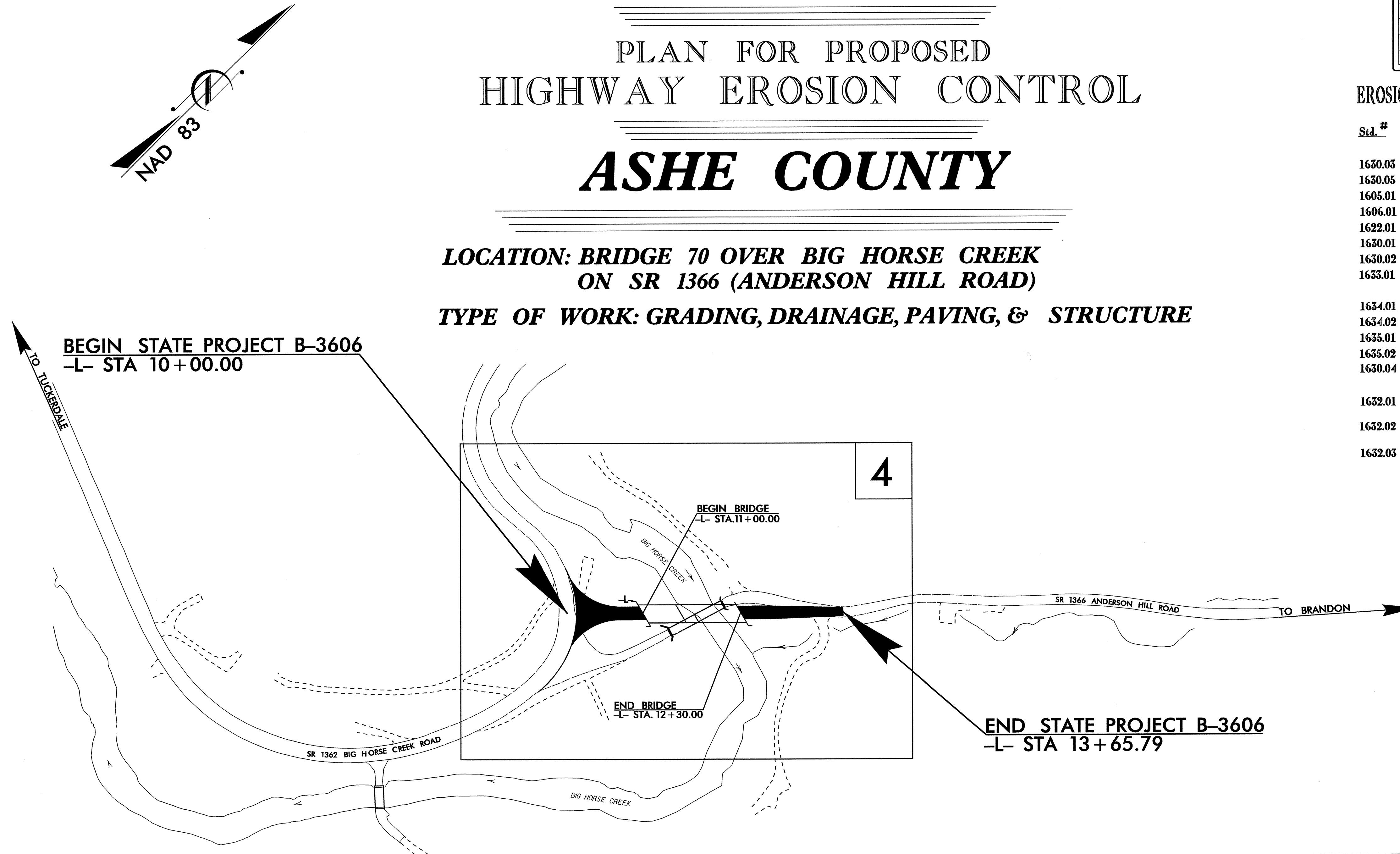


TIP PROJECT: B-3606

STATE OF NORTH CAROLINA
 DIVISION OF HIGHWAYS
 PLAN FOR PROPOSED
 HIGHWAY EROSION CONTROL
ASHE COUNTY

**LOCATION: BRIDGE 70 OVER BIG HORSE CREEK
 ON SR 1366 (ANDERSON HILL ROAD)**

TYPE OF WORK: GRADING, DRAINAGE, PAVING, & STRUCTURE



STATE	STATE PROJECT REFERENCE NO.	SHEET NO.	TOTAL SHEETS
N.C.	B-3606	EC-1	
STATE PROJ. NO.	F.A. PROJ. NO.	DESCRIPTION	

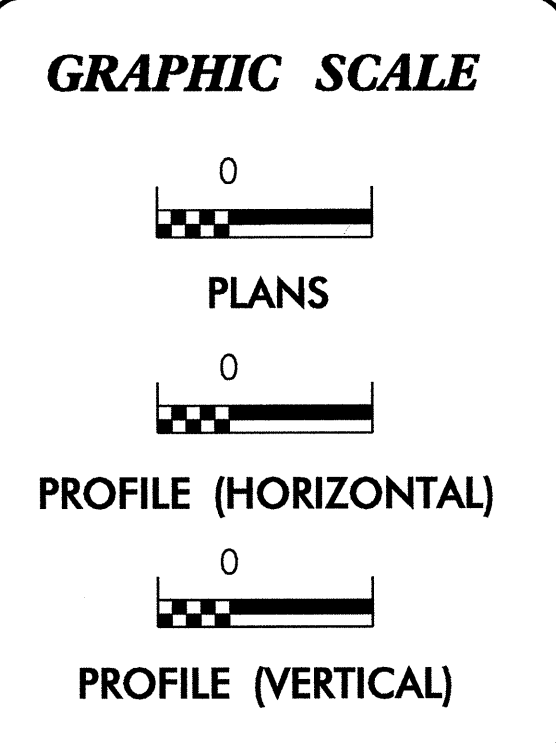
EROSION AND SEDIMENT CONTROL MEASURES

Std. #	Description	Symbol
	Streambank Reforestation.....	
1630.03	Temporary Silt Ditch.....	
1630.05	Temporary Diversion.....	
1605.01	Temporary Silt Fence.....	
1606.01	Special Sediment Control Fence.....	
1622.01	Temporary Berms and Slope Drains.....	
1630.01	Riser Basin.....	
1630.02	Silt Basin Type B.....	
1633.01	Temporary Rock Silt Check Type-A.....	
	Temporary Rock Silt Check Type-B.....	
1634.01	Temporary Rock Sediment Dam Type-A.....	
1634.02	Temporary Rock Sediment Dam Type-B.....	
1635.01	Rock Pipe Inlet Sediment Trap Type-A.....	
1635.02	Rock Pipe Inlet Sediment Trap Type-B.....	
1630.04	Stilling Basin.....	
	Rock Inlet Sediment Trap:	
1632.01	Type A.....	
1632.02	Type B.....	
1632.03	Type C.....	
	Skimmer Basin.....	
	Tiered Skimmer Basin.....	

THIS PROJECT CONTAINS EROSION CONTROL PLANS FOR CLEARING AND GRUBBING PHASE OF CONSTRUCTION.

ENVIRONMENTALLY SENSITIVE AREA(S) EXIST ON THIS PROJECT
Refer To E. C. Special Provisions for Special Considerations.

THIS PROJECT HAS BEEN DESIGNED TO SENSITIVE WATERSHED STANDARDS.



ROADSIDE ENVIRONMENTAL UNIT
 DIVISION OF HIGHWAYS
 STATE OF NORTH CAROLINA

Prepared In the Office of:
ROADSIDE ENVIRONMENTAL UNIT
 1 South Wilmington St.
 Raleigh, NC 27611
2006 STANDARD SPECIFICATIONS

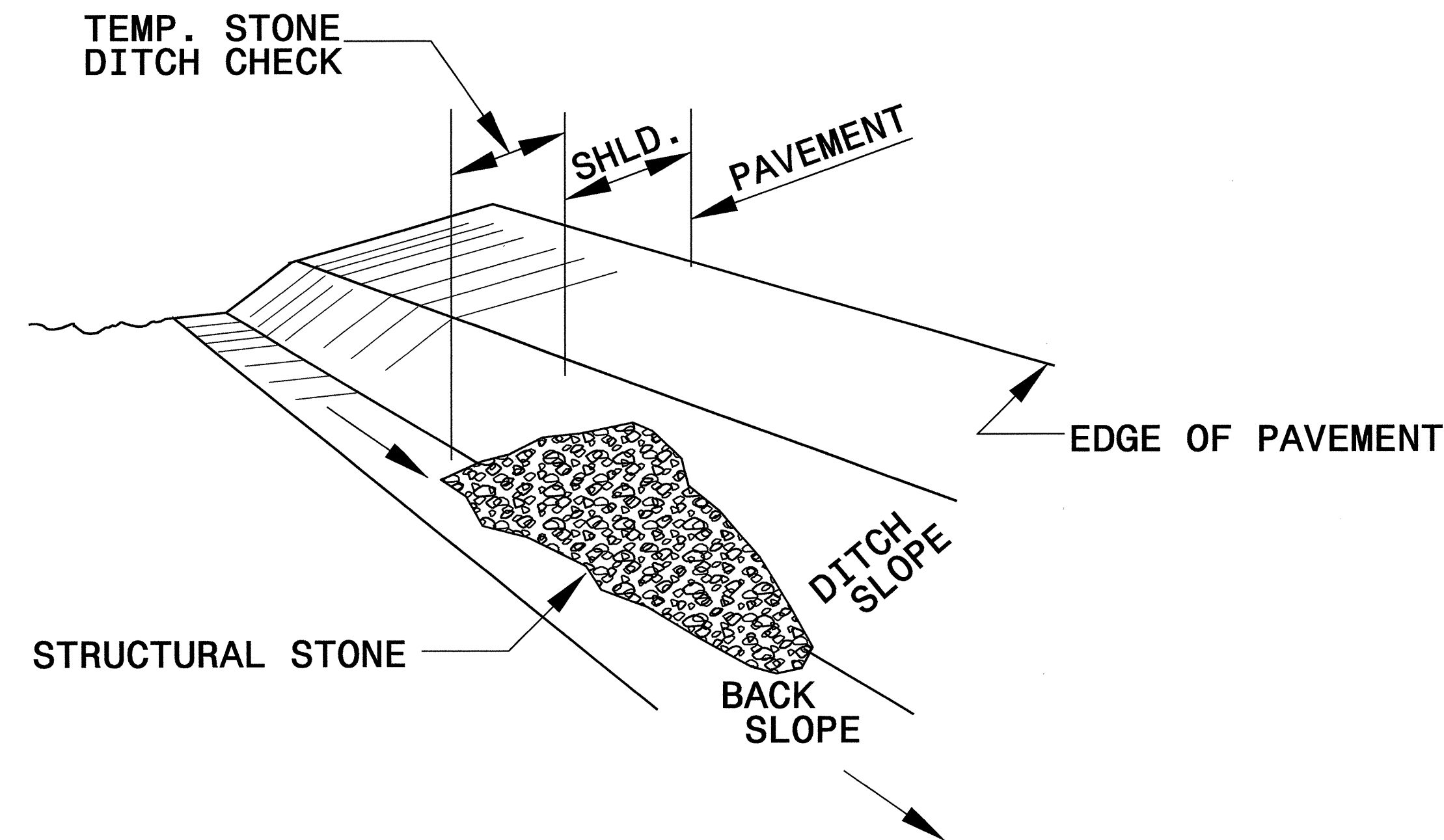
Roadway Standard Drawings

The following roadway english standards as appear in "Roadway Standard Drawings"- Roadway Design Unit - N. C. Department of Transportation - Raleigh, N. C., dated July 18, 2006 and the latest revision thereto are applicable to this project and by reference hereby are considered a part of these plans.

1605.01 Temporary Silt Fence	1630.06 Special Stilling Basin
1607.01 Gravel Construction Entrance	1632.03 Rock Inlet Sediment Trap Type C
1622.01 Temporary Berms and Slope Drains	1633.01 Temporary Rock Silt Check Type A
1630.02 Silt Basin Type B	1635.01 Rock Pipe Inlet Sediment Trap Type A
1630.03 Temporary Silt Ditch	
1630.05 Temporary Diversion	

PROJECT REFERENCE NO. B-3606	SHEET NO. EC-2
RW SHEET NO.	
ROADWAY DESIGN ENGINEER	HYDRAULICS ENGINEER

TEMPORARY ROCK SILT CHECK TYPE 'B' DETAIL

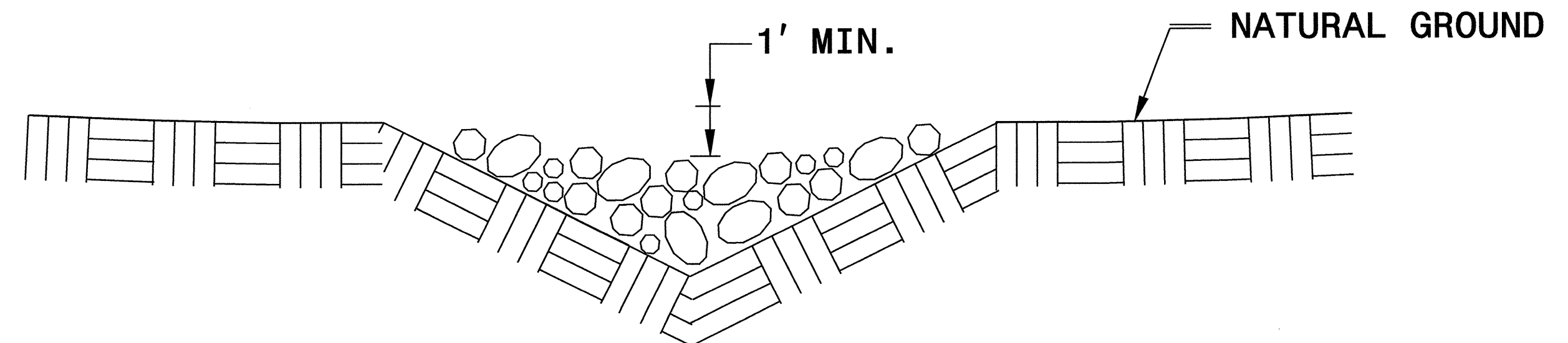


ISOMETRIC VIEW

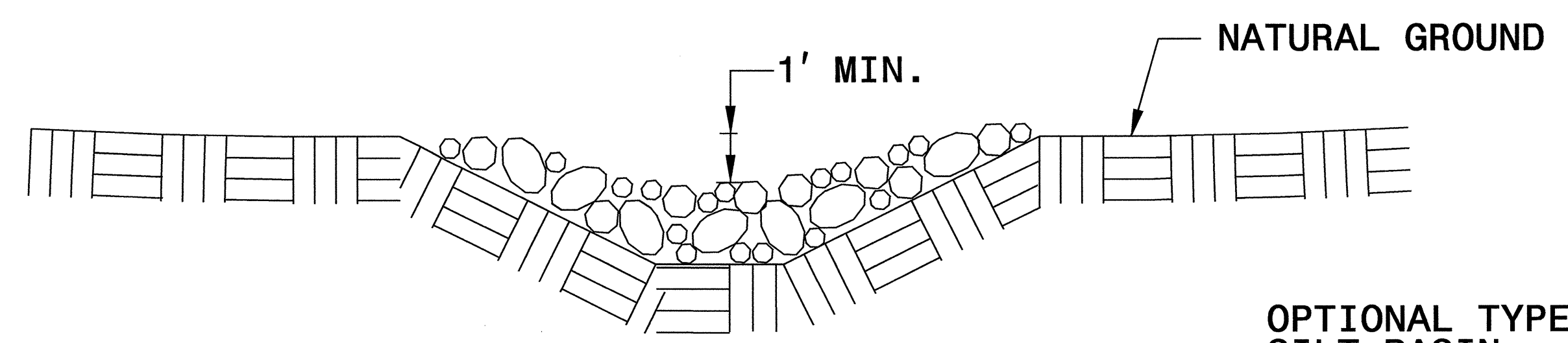
NOTES:

USE CLASS 'B' EROSION CONTROL STONE FOR STRUCTURAL STONE.

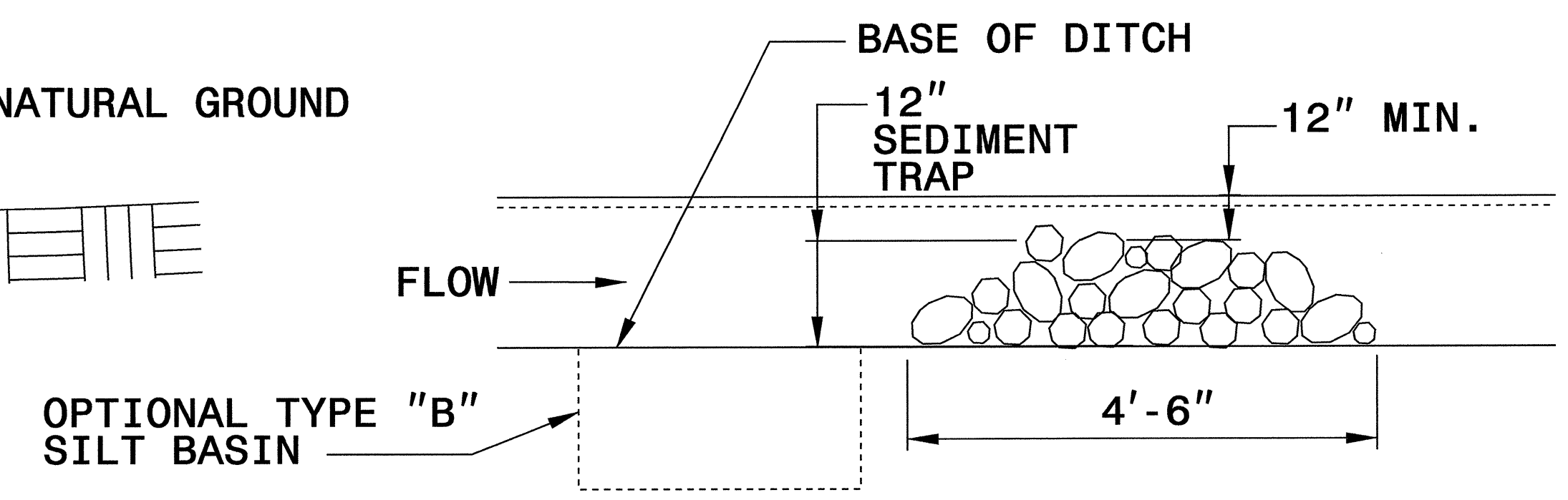
THE ENGINEER MAY DIRECT THE OPTION OF CLASS "A" STONE FOR SITES HAVING LESS THAN ONE (1) ACRE DRAINAGE AREA AND A DITCH GRADE LESS THAN 3%.



CROSS SECTION VEE DITCH



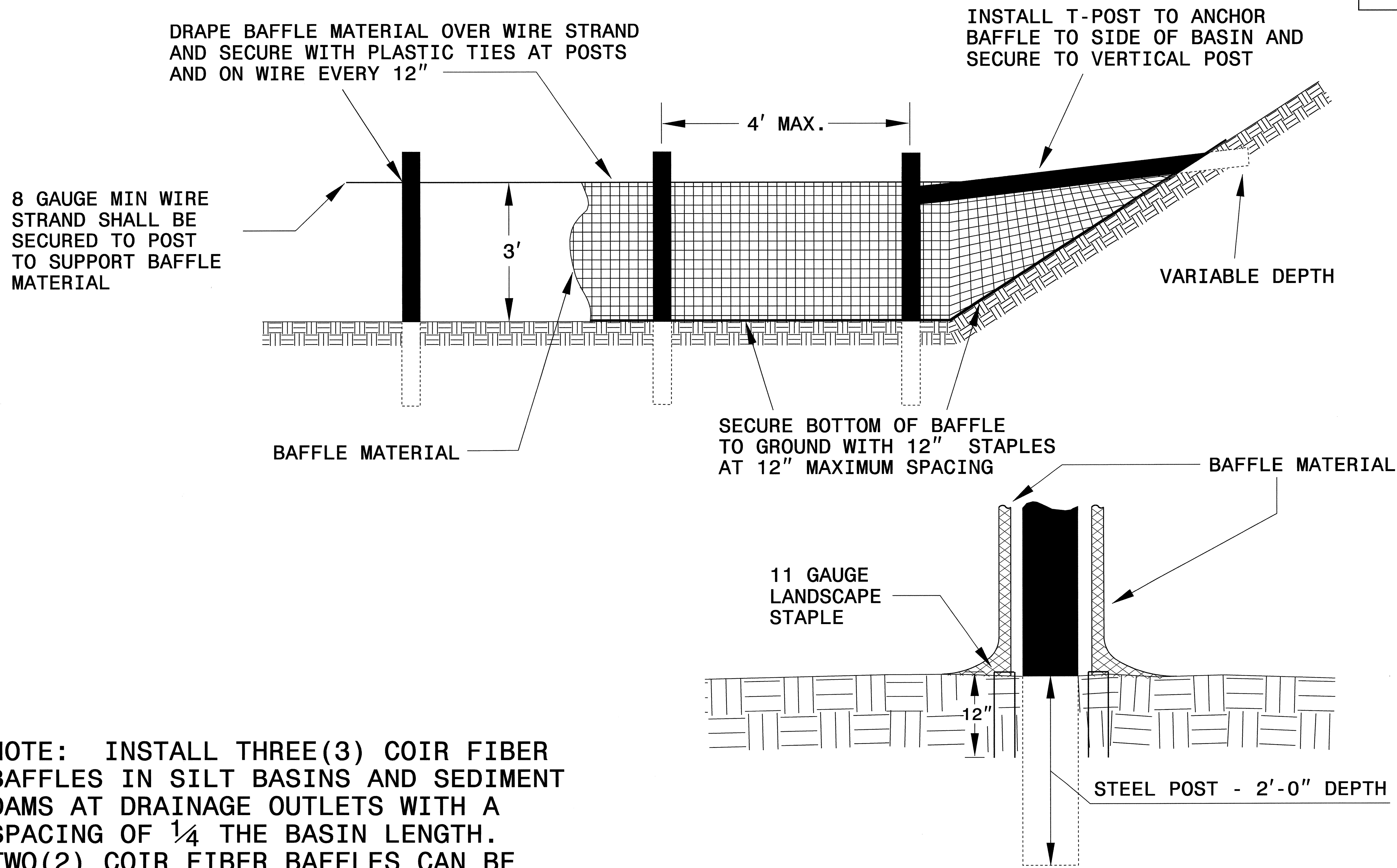
CROSS SECTION TRAPEZOIDAL DITCH



ELEVATION VIEW

PROJECT REFERENCE NO. B-3606	SHEET NO. EC-2A
RW SHEET NO.	
ROADWAY DESIGN ENGINEER	HYDRAULICS ENGINEER

COIR FIBER BAFFLE DETAIL

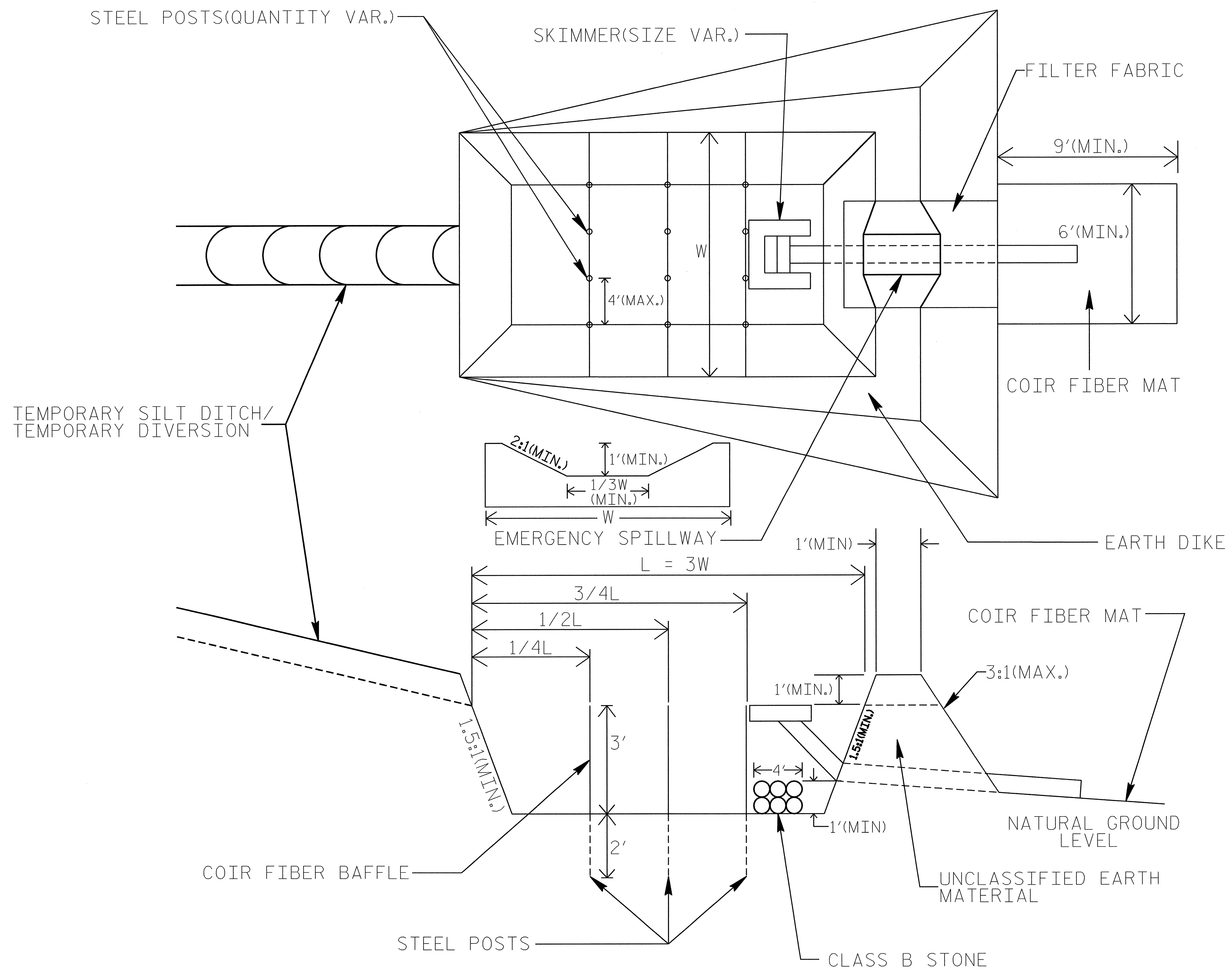


NOTE: INSTALL THREE (3) COIR FIBER BAFFLES IN SILT BASINS AND SEDIMENT DAMS AT DRAINAGE OUTLETS WITH A SPACING OF $\frac{1}{4}$ THE BASIN LENGTH. TWO (2) COIR FIBER BAFFLES CAN BE INSTALLED IN SILT BASINS AND DAMS LESS THAN 20 FT. IN LENGTH WITH A SPACING OF $\frac{1}{3}$ THE BASIN LENGTH.

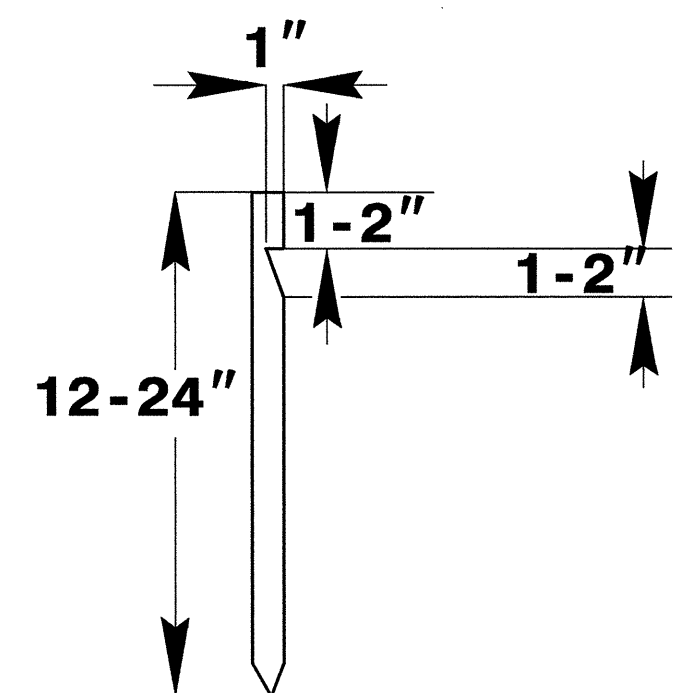
BAFFLE MATERIAL SHALL BE SECURED TO THE BOTTOM AND SIDES OF BASIN USING 12" LANDSCAPE STAPLES

SKIMMER BASIN WITH BAFFLES DETAIL

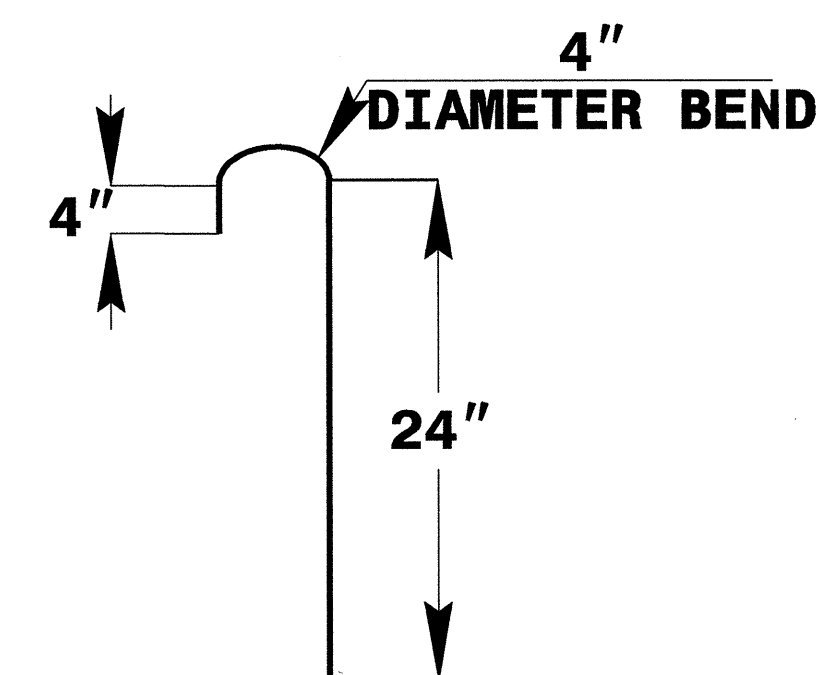
PROJECT REFERENCE NO. B-3606	SHEET NO. EC-2B
RW SHEET NO. ROADWAY DESIGN ENGINEER	HYDRAULICS ENGINEER



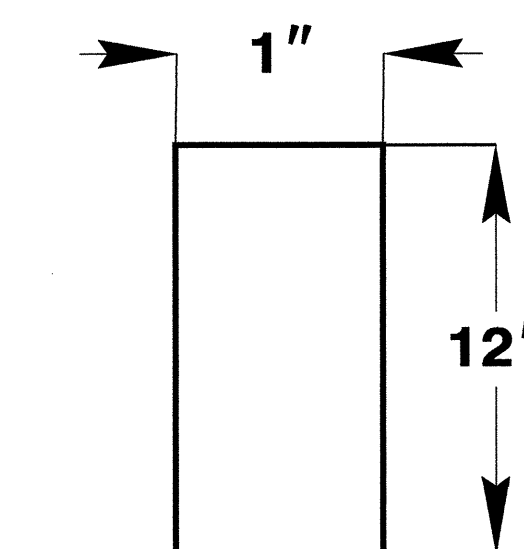
2" x 2" (nominal)
WOODEN STAKE



#10 STEEL
REINFORCEMENT BAR



1" (nominal)
STAPLE

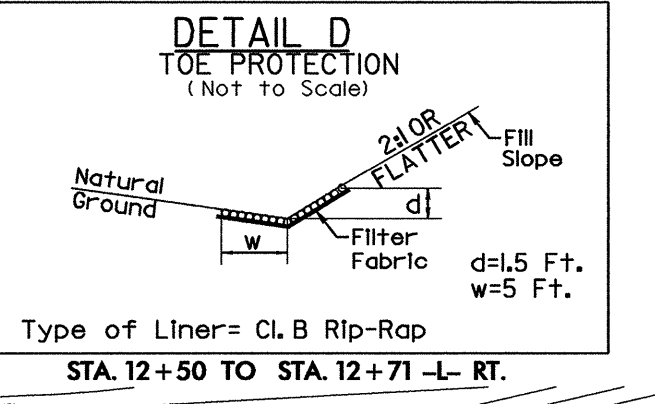
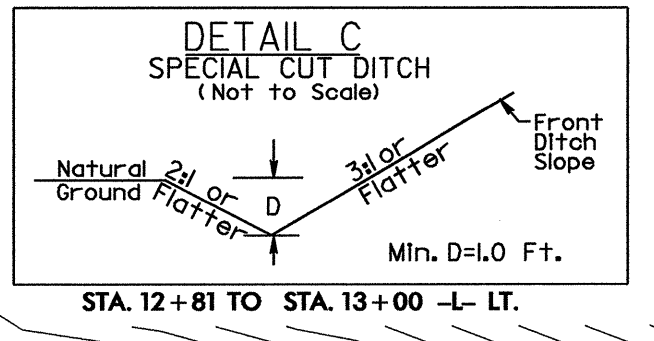
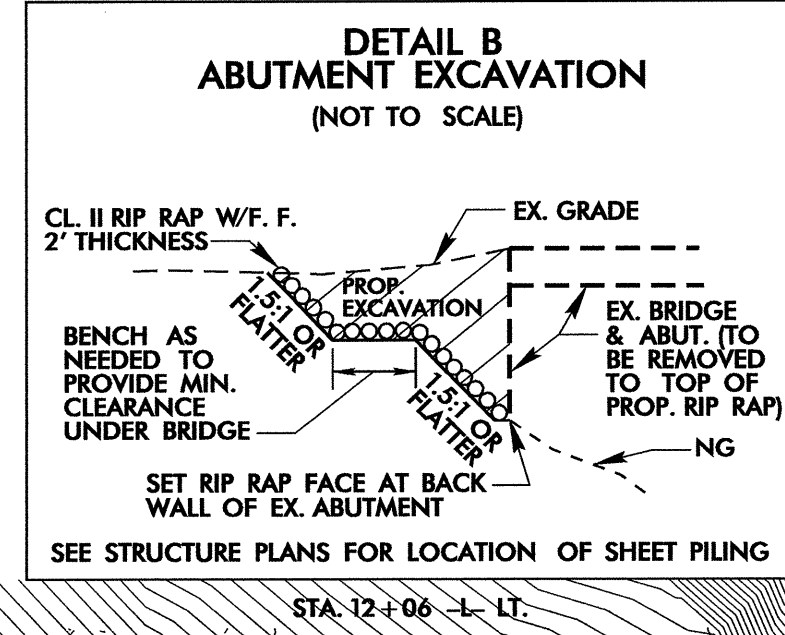
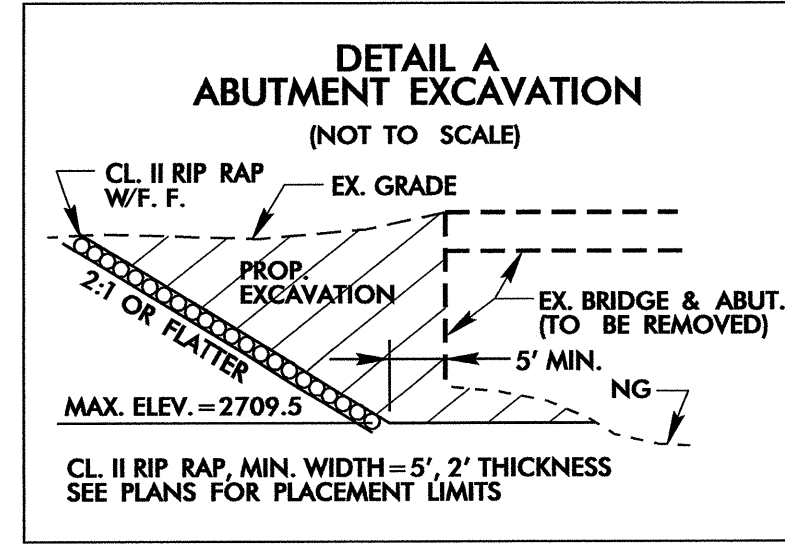


**COIR FIBER MAT
ANCHOR OPTIONS**

NOTES:

1. SEED AND PLACE MATTING FOR EROSION CONTROL ON SIDESLOPES.
2. LIMIT EARTH DIKE HEIGHT TO 5 FT.

PROJECT REFERENCE NO.	SHEET NO.
B-3606	EC-04/CONST.04
RAW SHEET NO.	
ROADWAY DESIGN ENGINEER	HYDRAULICS ENGINEER



NOTE: PLACE TEMPORARY ROCK SEDIMENT DAMS TYPE - B AND TEMPORARY ROCK SILT CHECKS TYPE - A AT DRAINAGE OUTLETS.

NOTE: UTILIZE SPECIAL STILLING BASIN OR SKIMMER BASIN AS STILLING BASIN WHERE APPLICABLE.

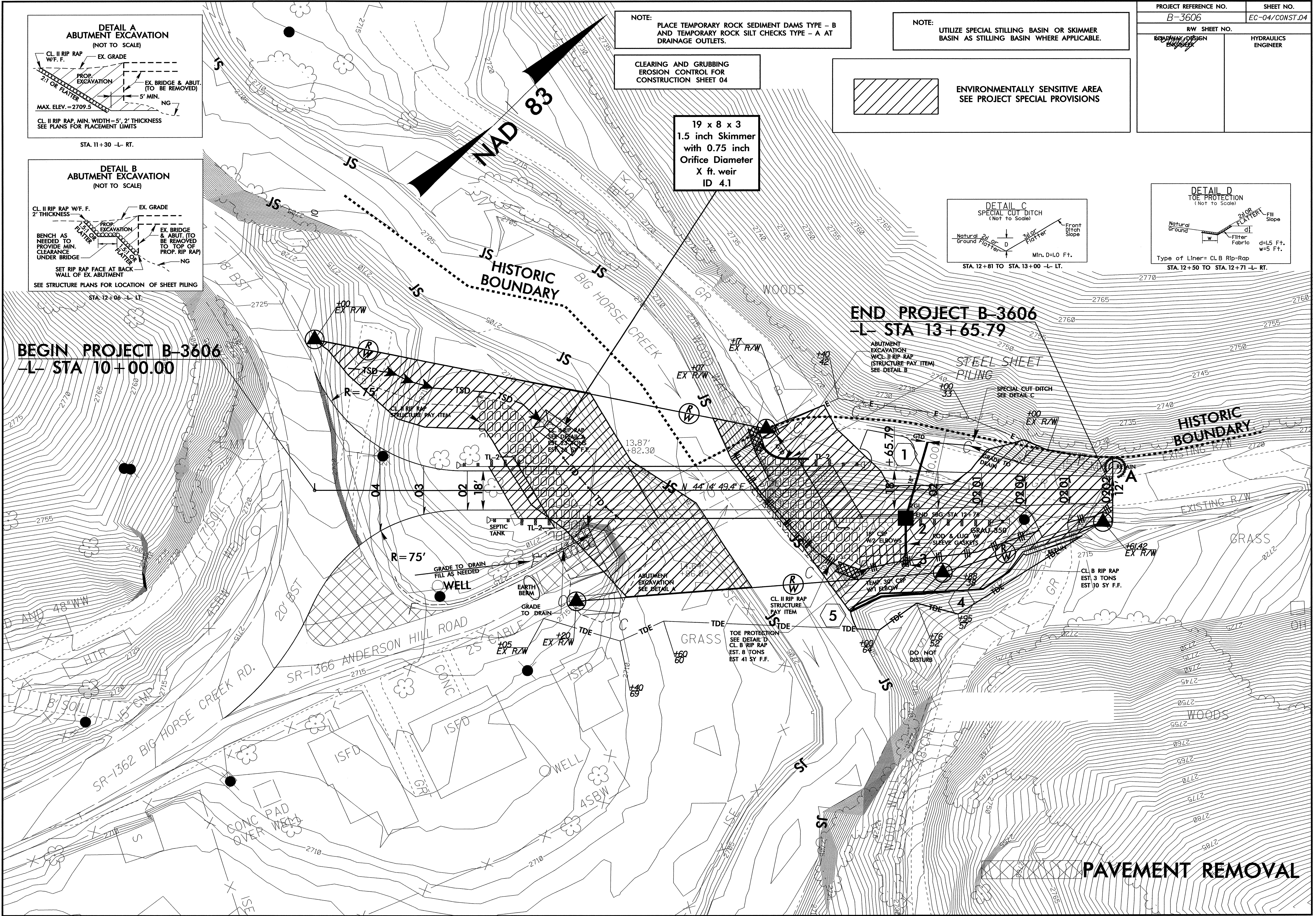
CLEARING AND GRUBBING EROSION CONTROL FOR CONSTRUCTION SHEET 04

ENVIRONMENTALLY SENSITIVE AREA
SEE PROJECT SPECIAL PROVISIONS

19 x 8 x 3
1.5 inch Skimmer
with 0.75 inch
Orifice Diameter
X ft. weir
ID 4.1

**BEGIN PROJECT B-3606
L- STA 10+00.00**

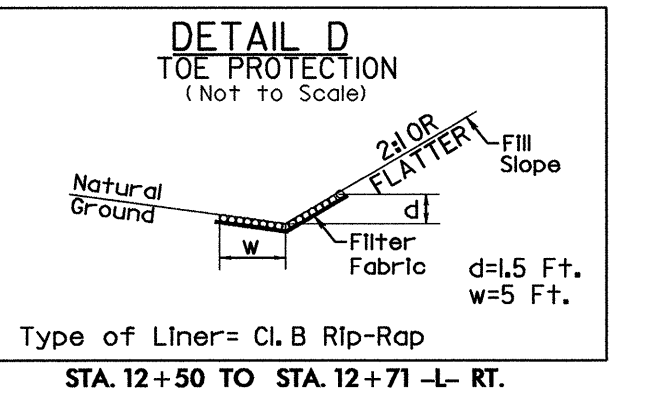
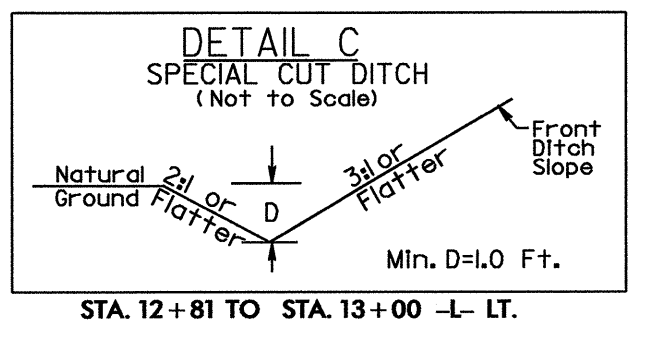
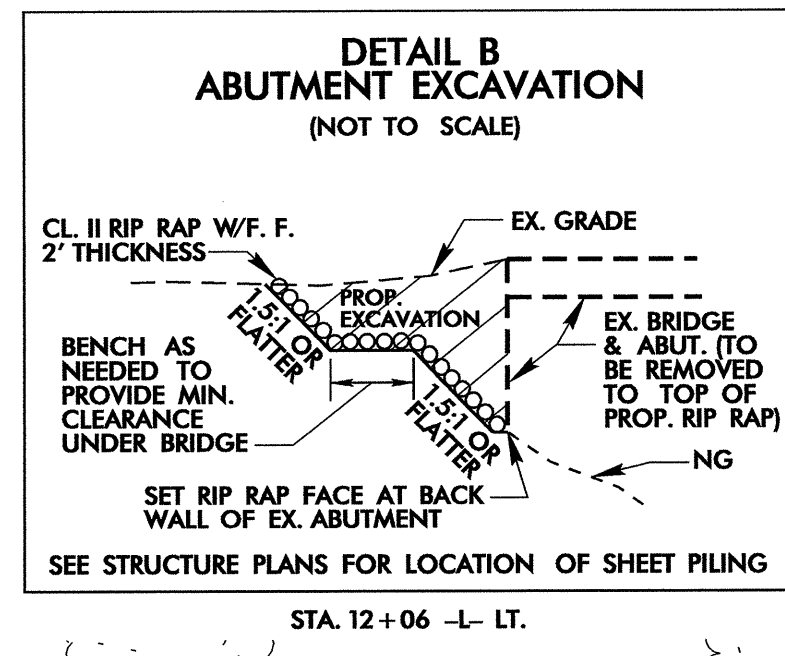
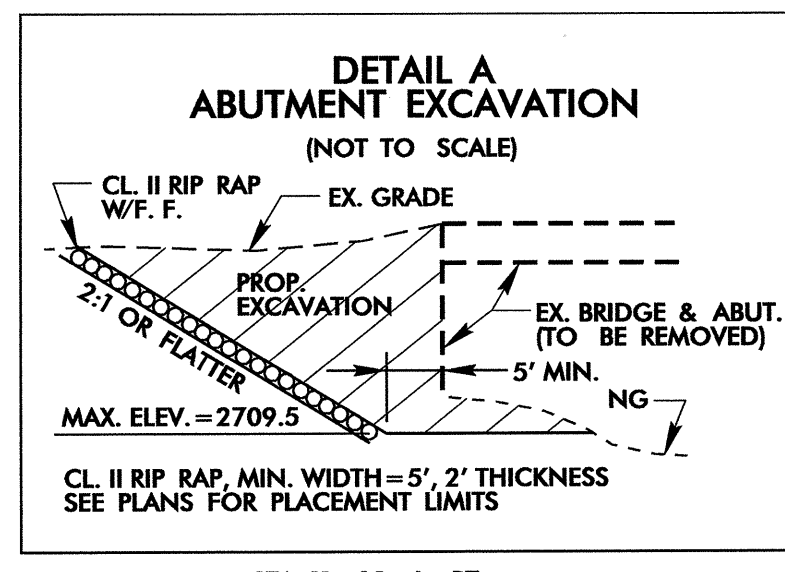
**END PROJECT B-3606
L- STA 13+65.79**



8/17/99

PROJECT REFERENCE NO. B-3606	SHEET NO. EC-05/CONST.04
RAW SHEET NO. ROADWAY DESIGN ENGINEER	HYDRAULICS ENGINEER

NOTE:
UTILIZE SPECIAL STILLING BASIN OR SKIMMER
BASIN AS STILLING BASIN WHERE APPLICABLE.



BEGIN PROJECT B-3606
-L- STA 10+00.00

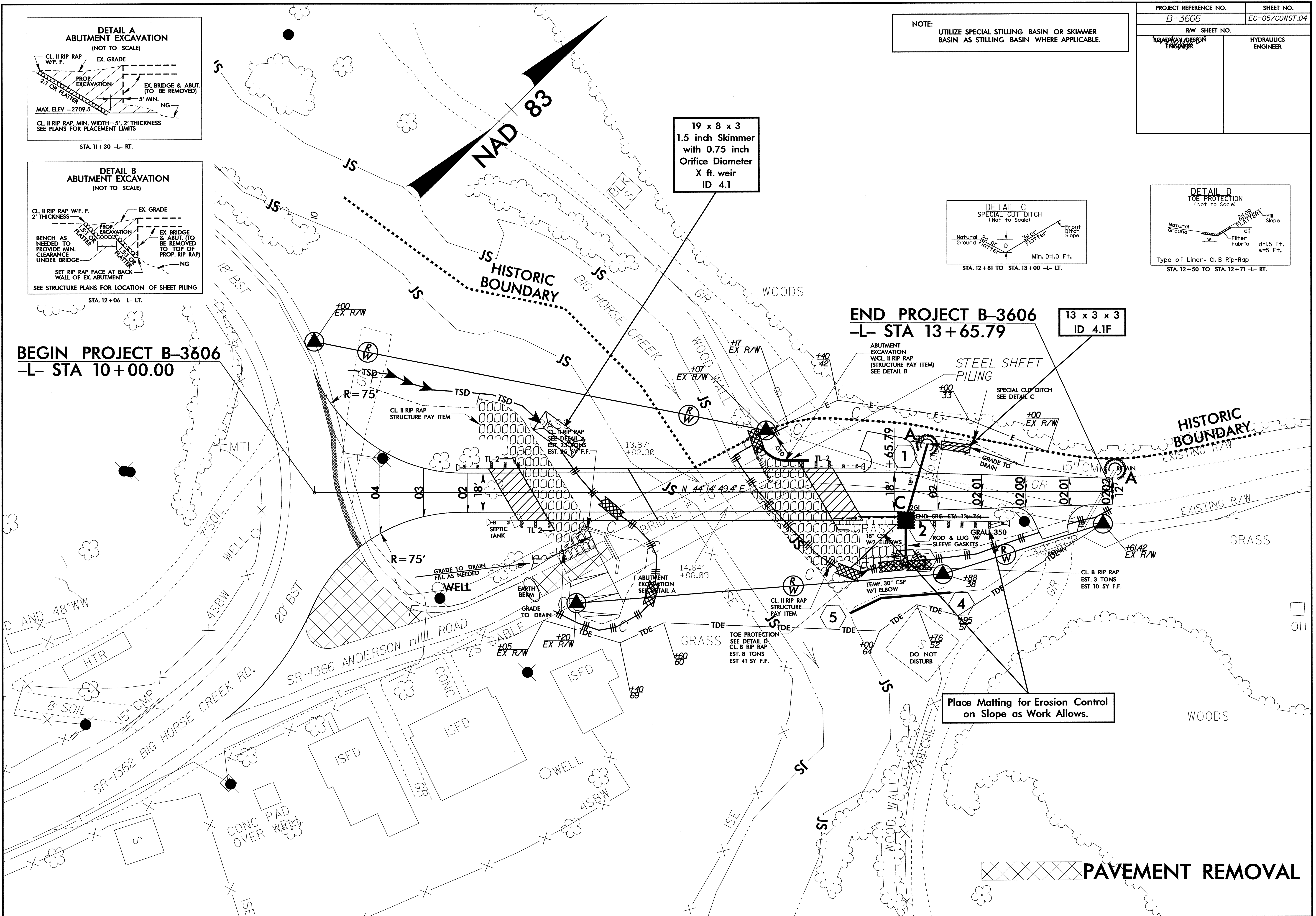
END PROJECT B-3606
-L- STA 13+65.79

19 x 8 x 3
1.5 inch Skimmer
with 0.75 inch
Orifice Diameter
X ft. weir
ID 4.1

13 x 3 x 3
ID 4.1F

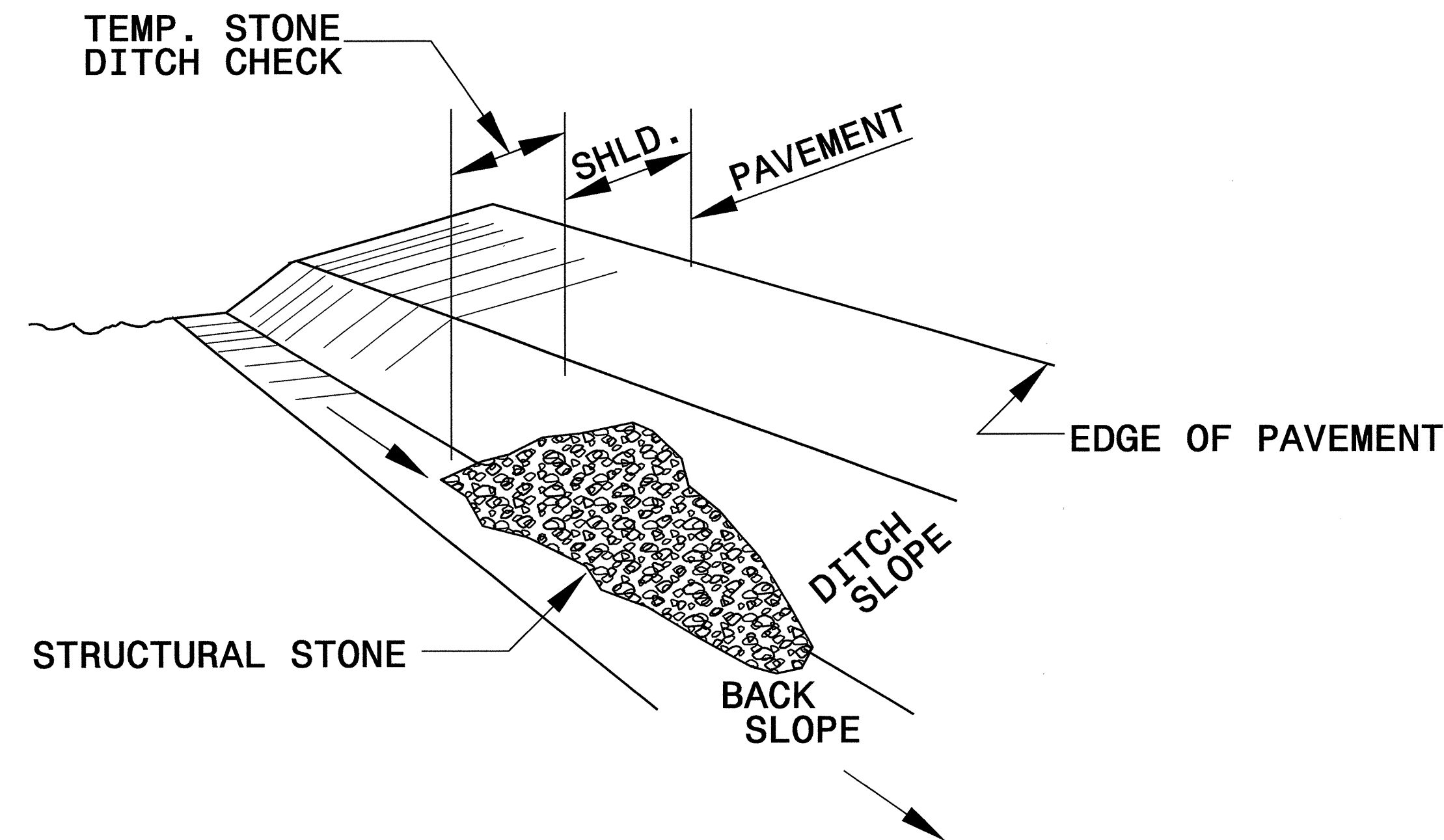
Place Matting for Erosion Control
on Slope as Work Allows.

PAVEMENT REMOVAL



PROJECT REFERENCE NO. B-3606	SHEET NO. EC-2
RW SHEET NO.	
ROADWAY DESIGN ENGINEER	HYDRAULICS ENGINEER

TEMPORARY ROCK SILT CHECK TYPE 'B' DETAIL

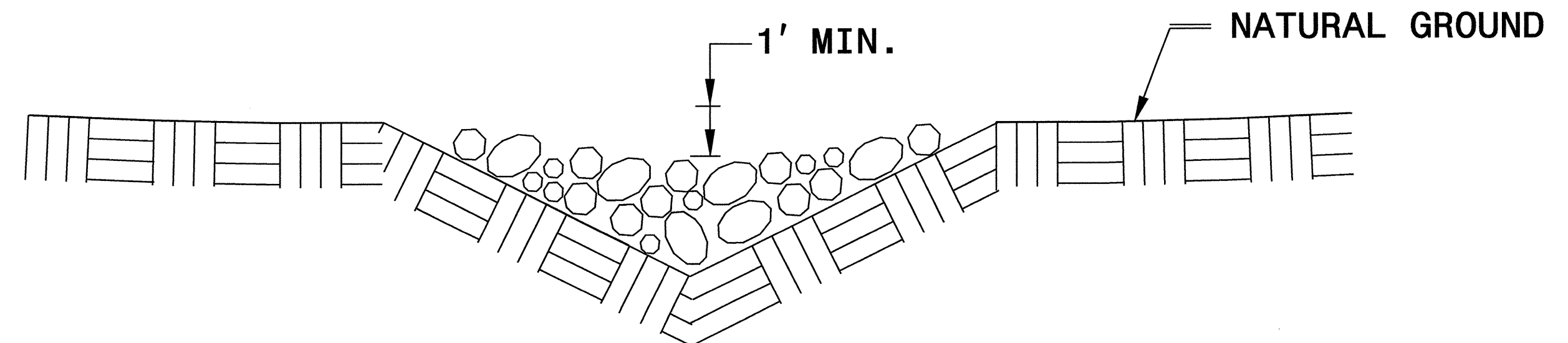


ISOMETRIC VIEW

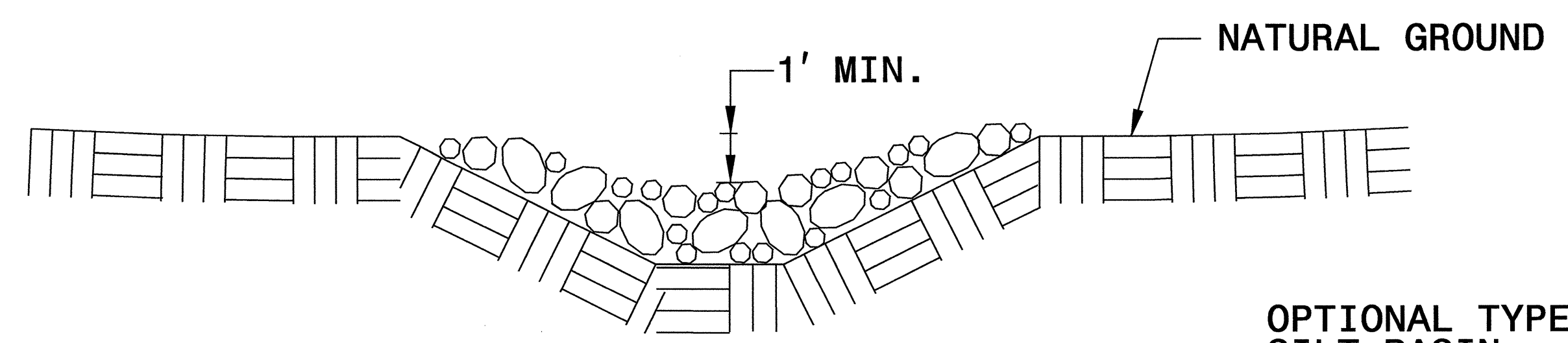
NOTES:

USE CLASS 'B' EROSION CONTROL STONE FOR STRUCTURAL STONE.

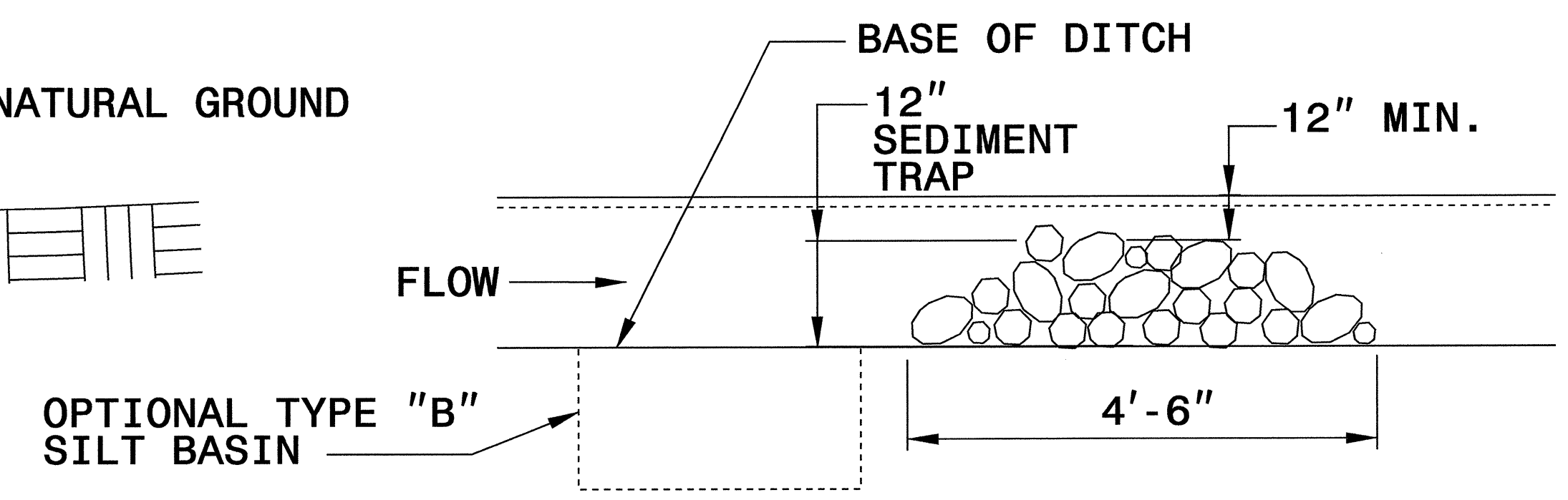
THE ENGINEER MAY DIRECT THE OPTION OF CLASS "A" STONE FOR SITES HAVING LESS THAN ONE (1) ACRE DRAINAGE AREA AND A DITCH GRADE LESS THAN 3%.



CROSS SECTION VEE DITCH



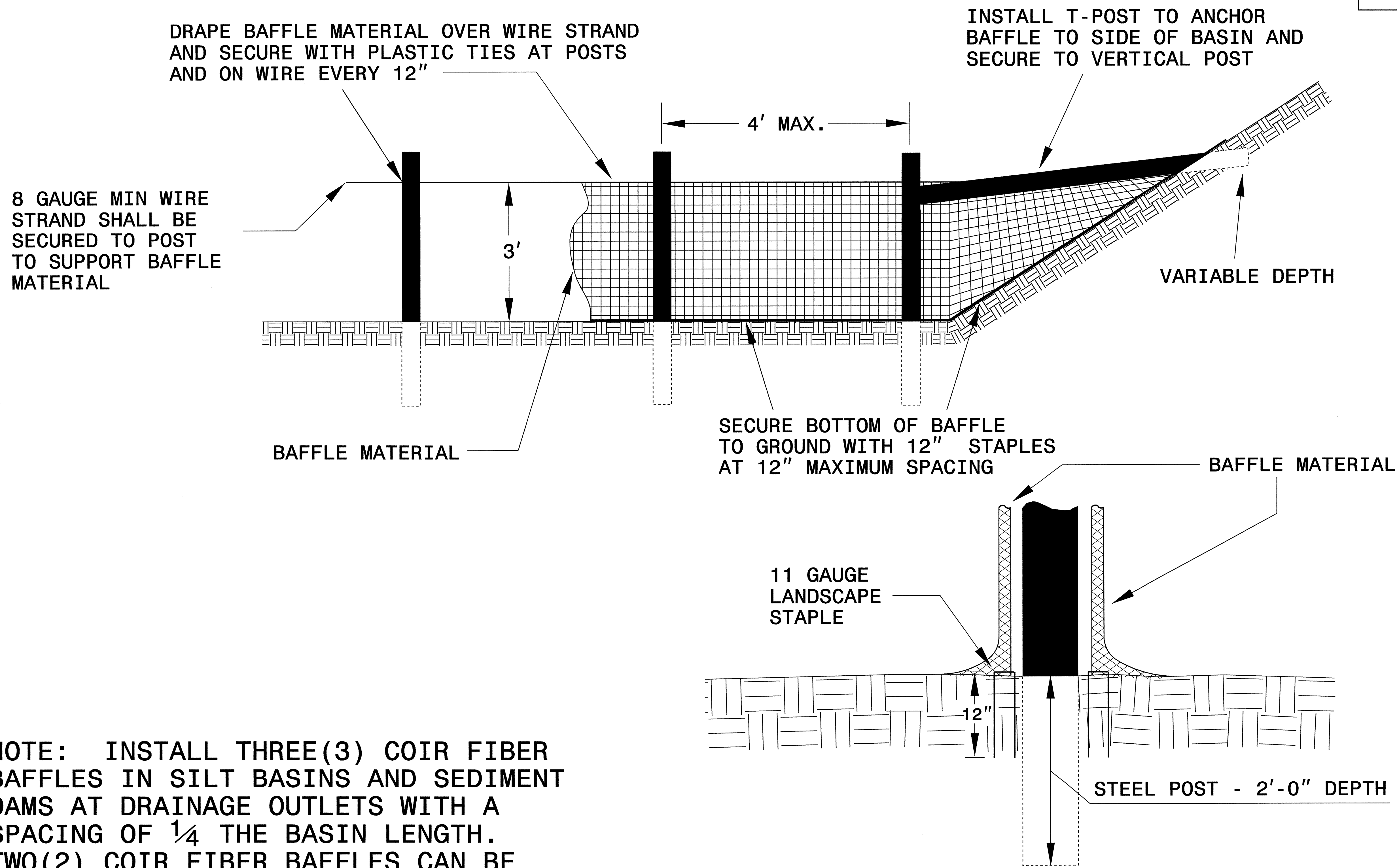
CROSS SECTION TRAPEZOIDAL DITCH



ELEVATION VIEW

PROJECT REFERENCE NO. B-3606	SHEET NO. EC-2A
R/W SHEET NO. ROADWAY DESIGN ENGINEER	HYDRAULICS ENGINEER

COIR FIBER BAFFLE DETAIL

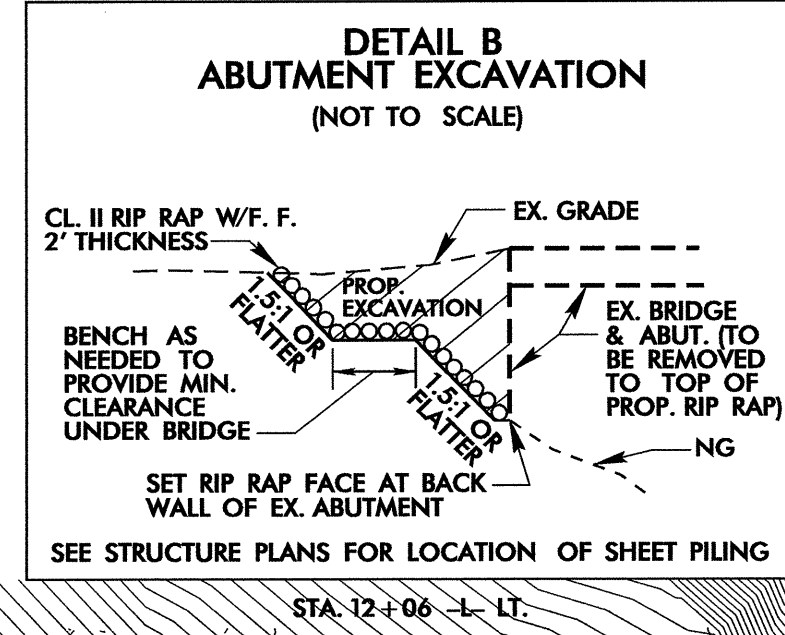
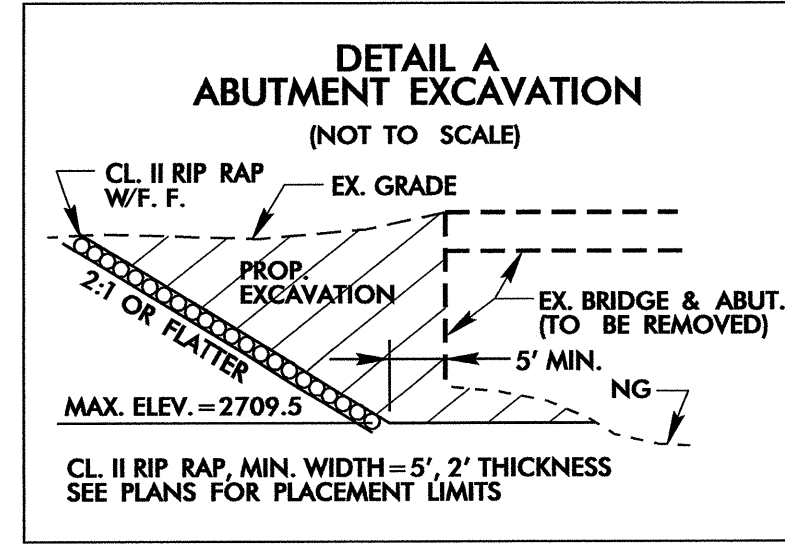


NOTE: INSTALL THREE (3) COIR FIBER BAFFLES IN SILT BASINS AND SEDIMENT DAMS AT DRAINAGE OUTLETS WITH A SPACING OF $\frac{1}{4}$ THE BASIN LENGTH. TWO (2) COIR FIBER BAFFLES CAN BE INSTALLED IN SILT BASINS AND DAMS LESS THAN 20 FT. IN LENGTH WITH A SPACING OF $\frac{1}{3}$ THE BASIN LENGTH.

BAFFLE MATERIAL SHALL BE SECURED TO THE BOTTOM AND SIDES OF BASIN USING 12" LANDSCAPE STAPLES

8/17/99

PROJECT REFERENCE NO.	SHEET NO.
B-3606	EC-04/CONST.04
RAW SHEET NO.	
ROADWAY DESIGN ENGINEER	HYDRAULICS ENGINEER



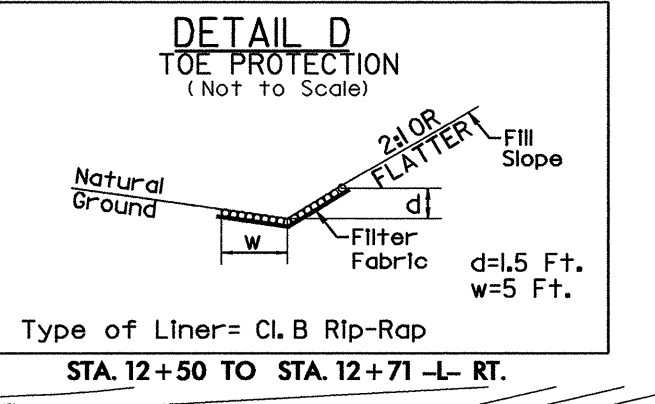
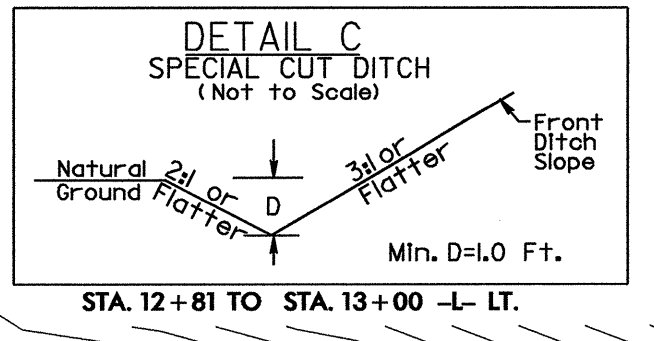
NOTE: PLACE TEMPORARY ROCK SEDIMENT DAMS TYPE - B AND TEMPORARY ROCK SILT CHECKS TYPE - A AT DRAINAGE OUTLETS.

NOTE: UTILIZE SPECIAL STILLING BASIN OR SKIMMER BASIN AS STILLING BASIN WHERE APPLICABLE.

CLEARING AND GRUBBING EROSION CONTROL FOR CONSTRUCTION SHEET 04

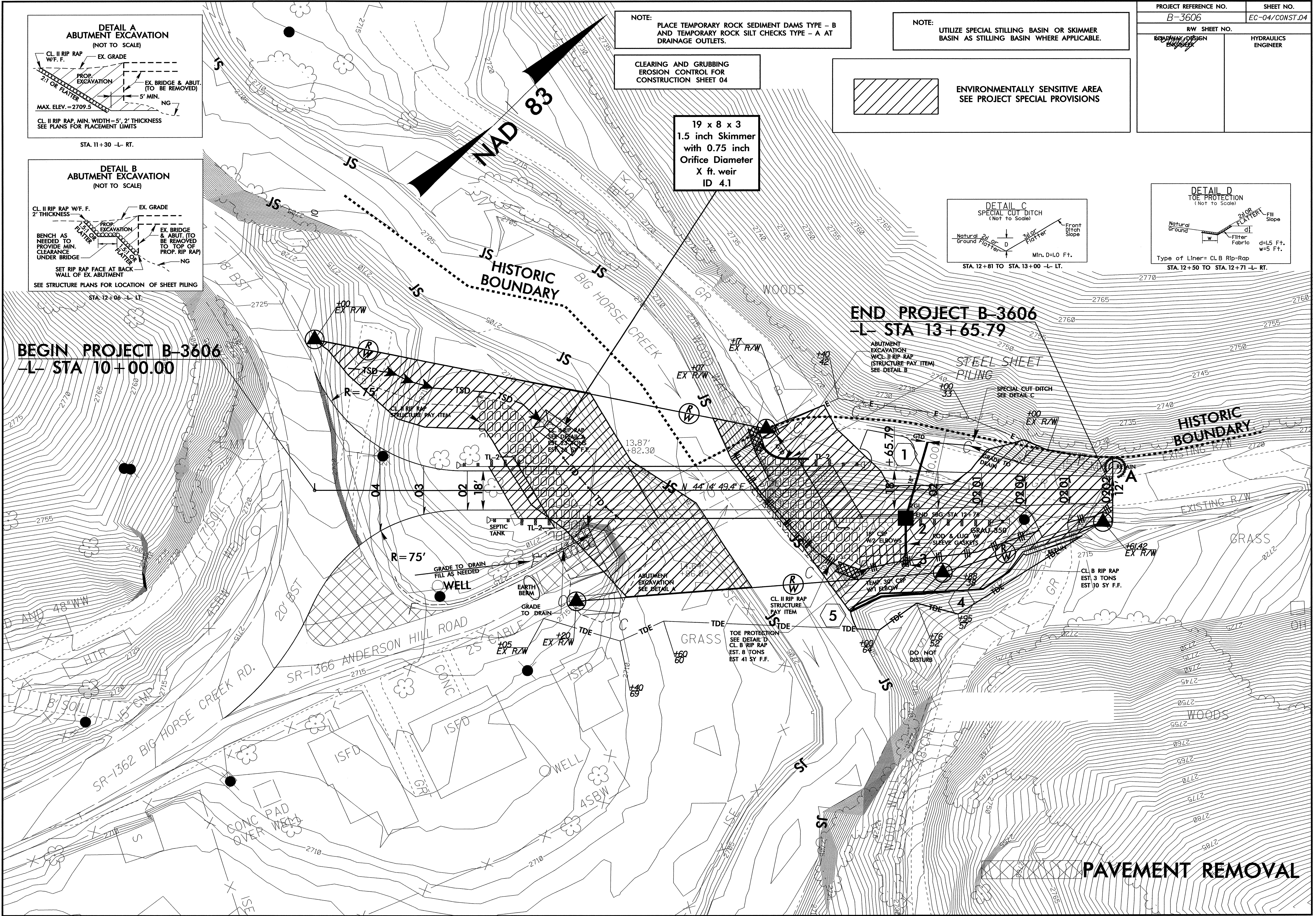


19 x 8 x 3
1.5 inch Skimmer
with 0.75 inch
Orifice Diameter
X ft. weir
ID 4.1



**BEGIN PROJECT B-3606
L- STA 10+00.00**

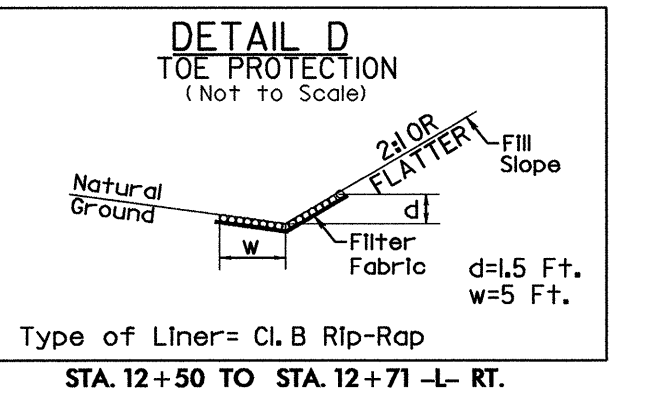
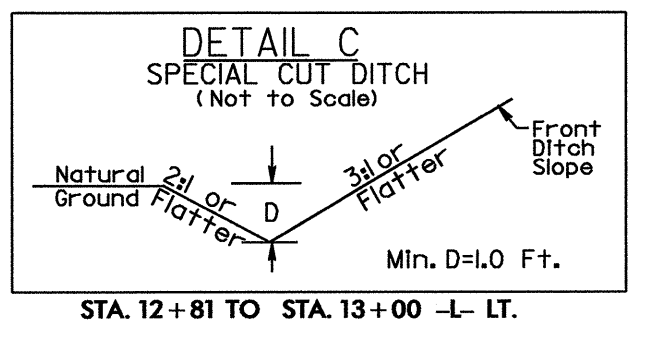
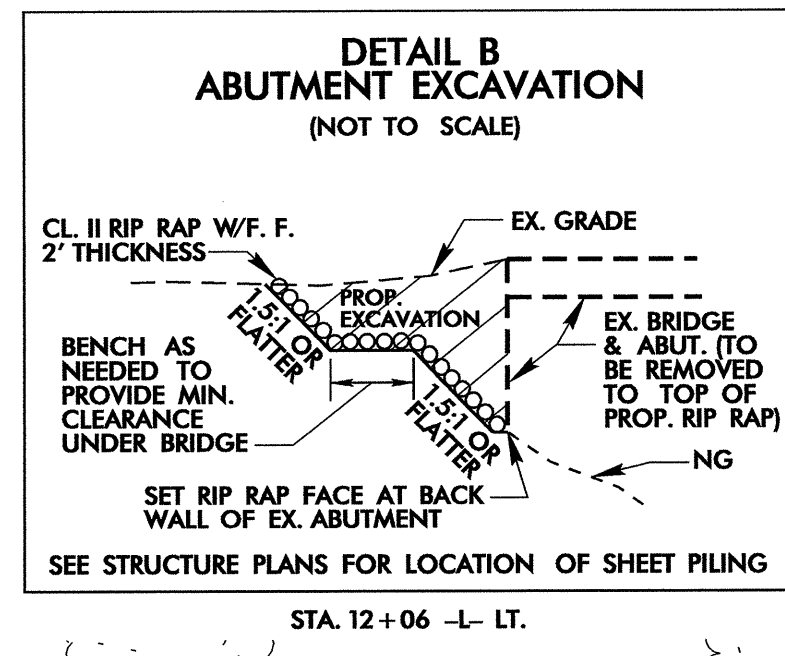
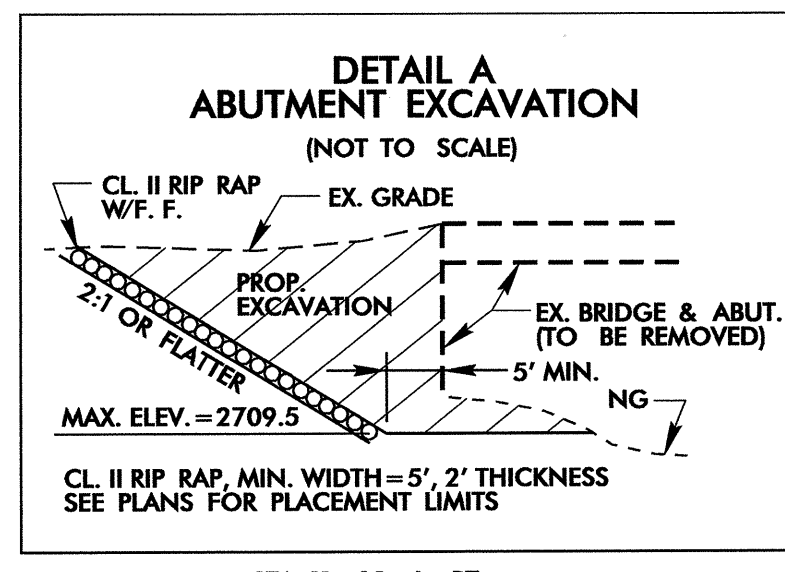
**END PROJECT B-3606
L- STA 13+65.79**



8/17/99

PROJECT REFERENCE NO. B-3606	SHEET NO. EC-05/CONST.04
RAW SHEET NO. ROADWAY DESIGN ENGINEER	HYDRAULICS ENGINEER

NOTE:
UTILIZE SPECIAL STILLING BASIN OR SKIMMER
BASIN AS STILLING BASIN WHERE APPLICABLE.



BEGIN PROJECT B-3606
-L- STA 10+00.00

END PROJECT B-3606
-L- STA 13+65.79

19 x 8 x 3
1.5 inch Skimmer
with 0.75 inch
Orifice Diameter
X ft. weir
ID 4.1

13 x 3 x 3
ID 4.1F

Place Matting for Erosion Control
on Slope as Work Allows.

PAVEMENT REMOVAL

