

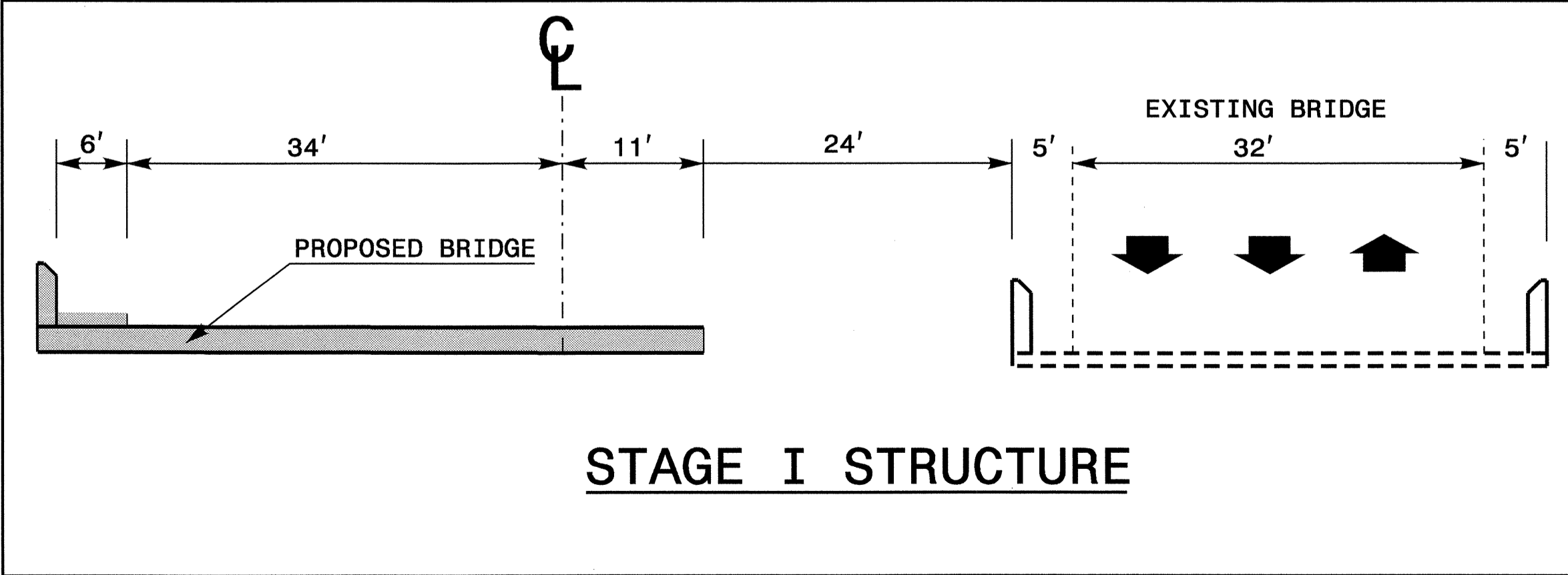
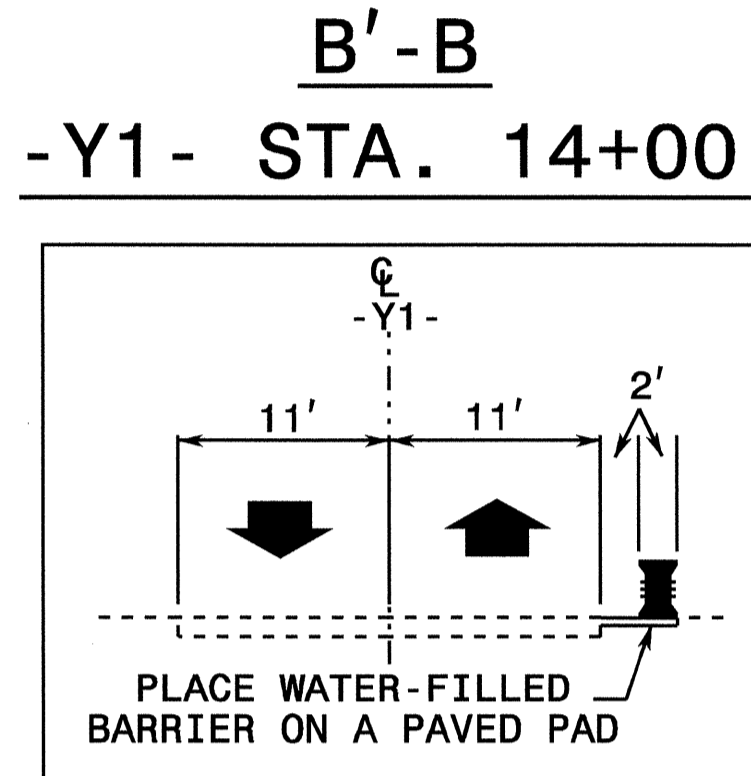
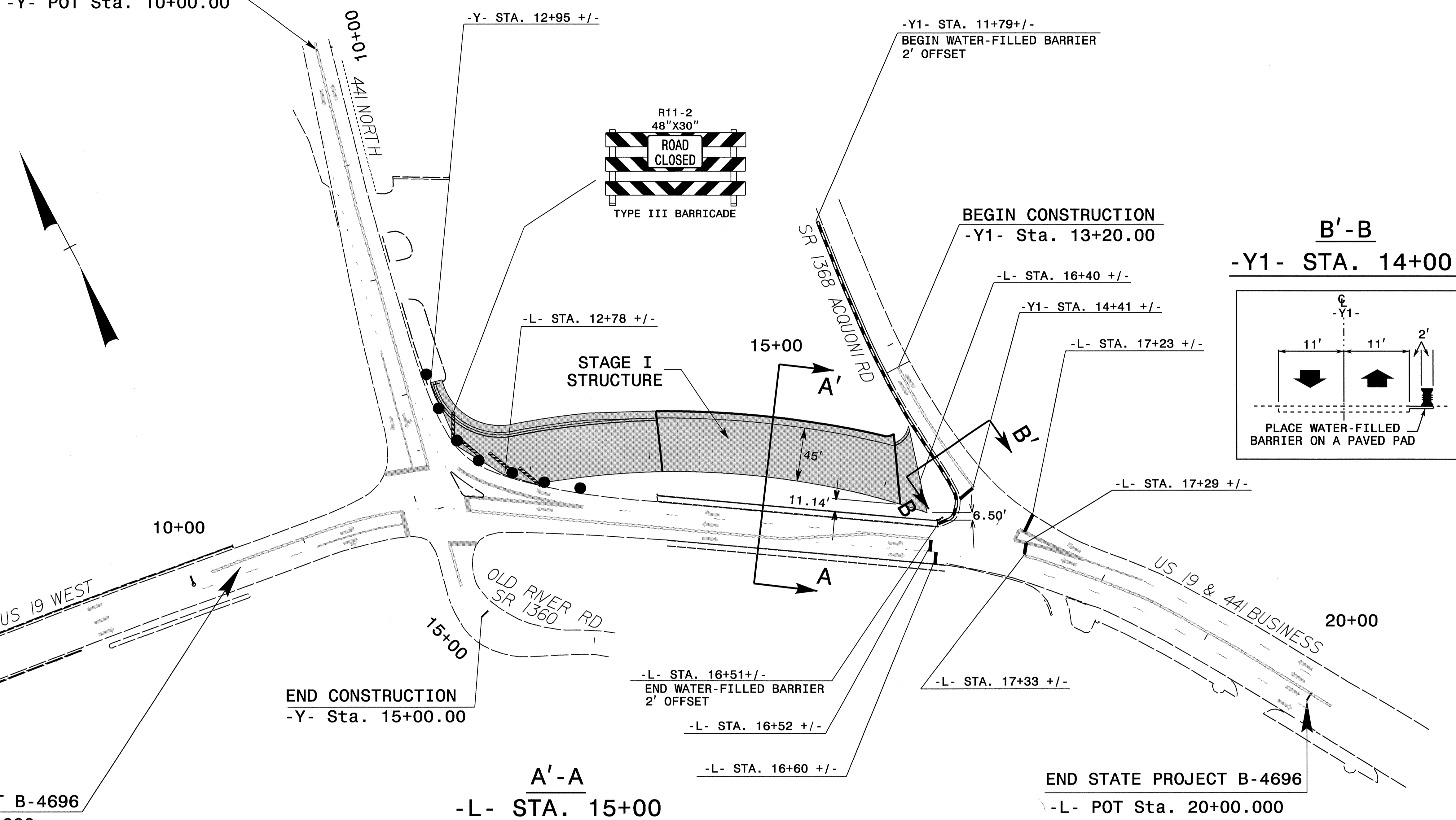






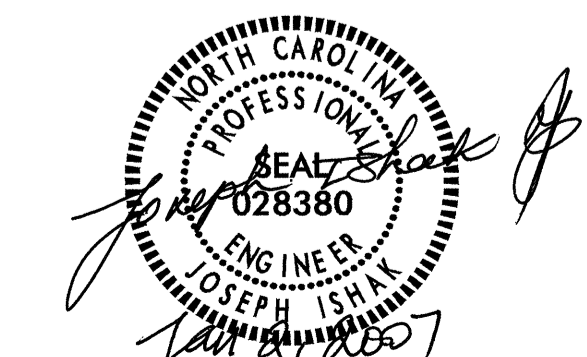


BEGIN CONSTRUCTION  
-Y- POT Sta. 10+00.00

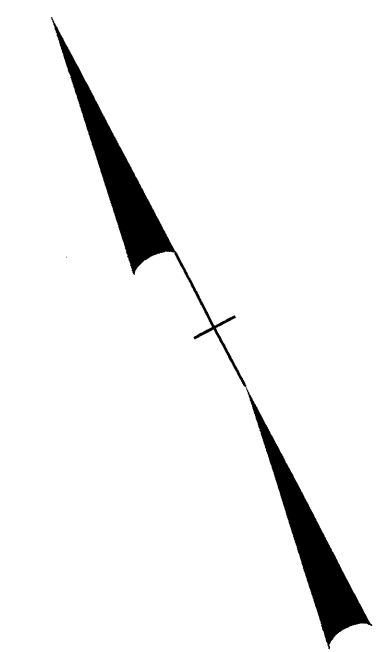
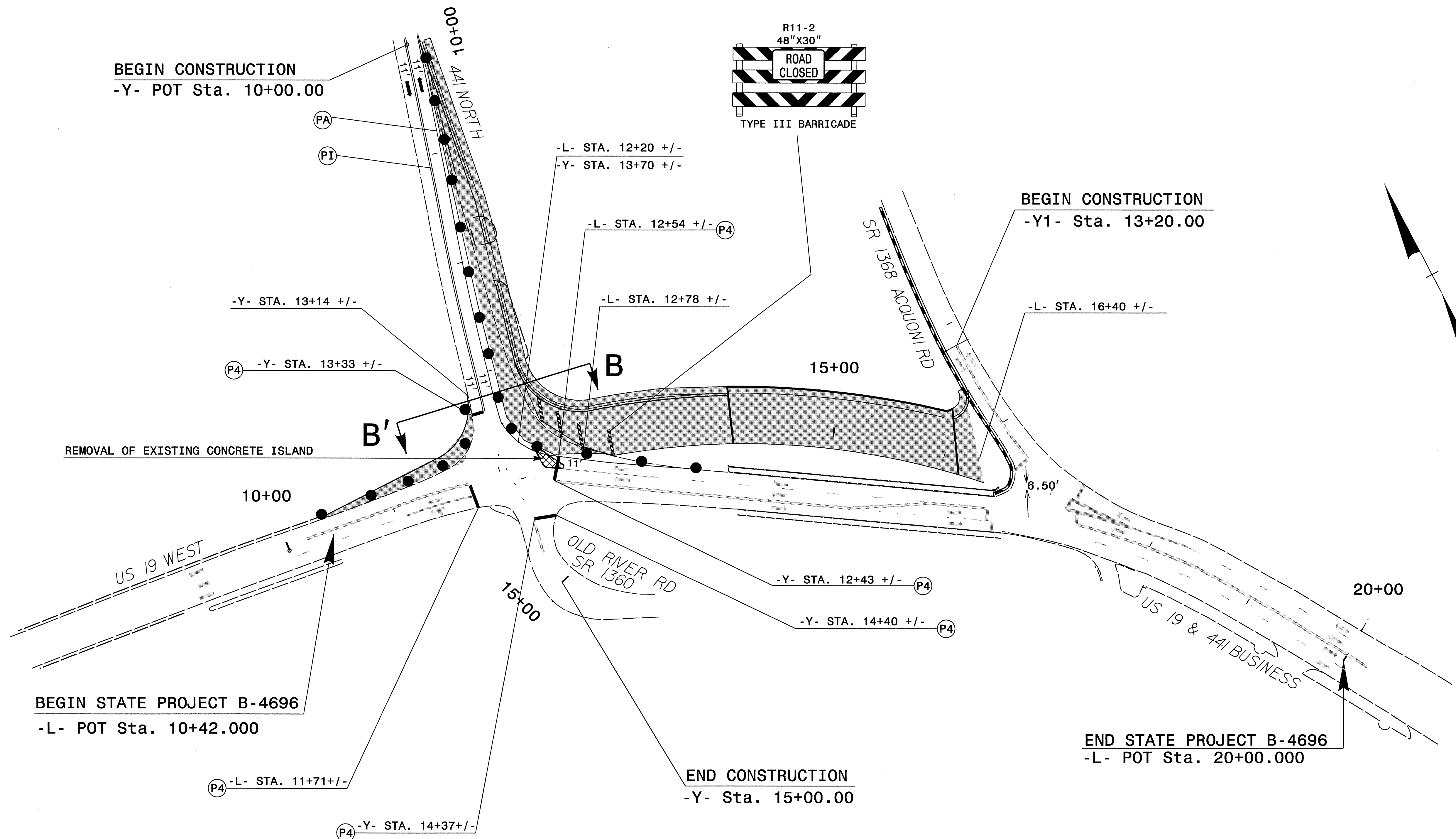


END STATE PROJECT B-4696  
-L- POT Sta. 20+00.000

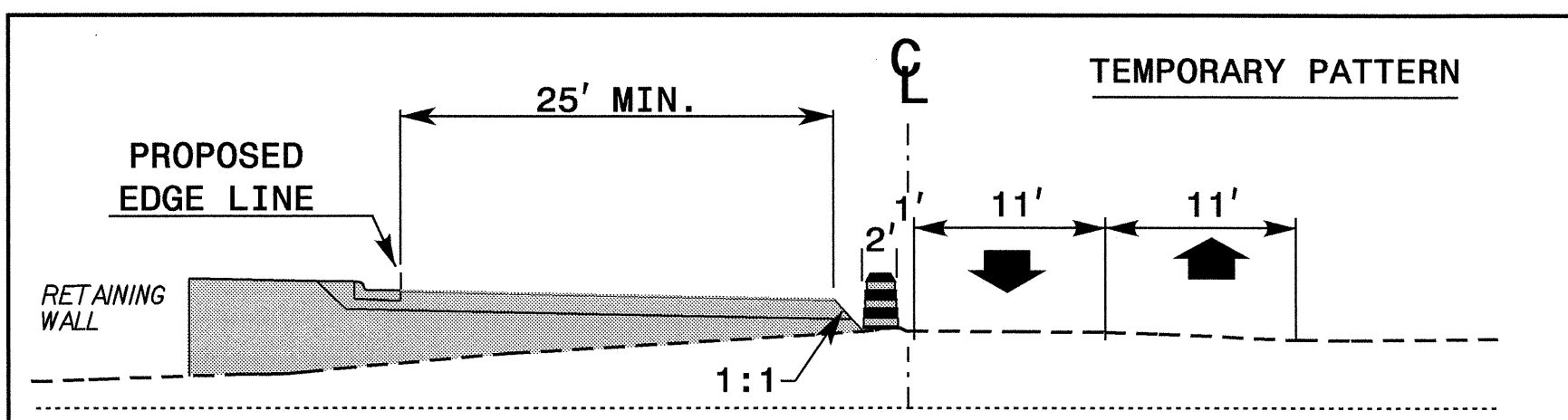
**LEGEND**

EXISTING PAVEMENT MARKING	
APPROVED: 	DATE: _____
<b>DETAIL I</b>	
SCALE: NONE	REVISIONS
DATE: Dec. 2006	9/2004
DWG. BY: MHS	
DESIGN BY: MHS	
REVIEWED BY: HAL	

02-JAN-2007 11:28  
 \\dot\dfsroot\projstore\naproj\piprojects-b\4696\traffic\trafficcontrol\top\top&pm\4696\_fc\_btop.dgn  
 halawandos AT WZTC24250



**B' - B**  
-Y- STA. 13+20.00



SEE SHEET TCP-3A FOR TEMPORARY PAVEMENT MARKING SCHEDULE

**LEGEND**

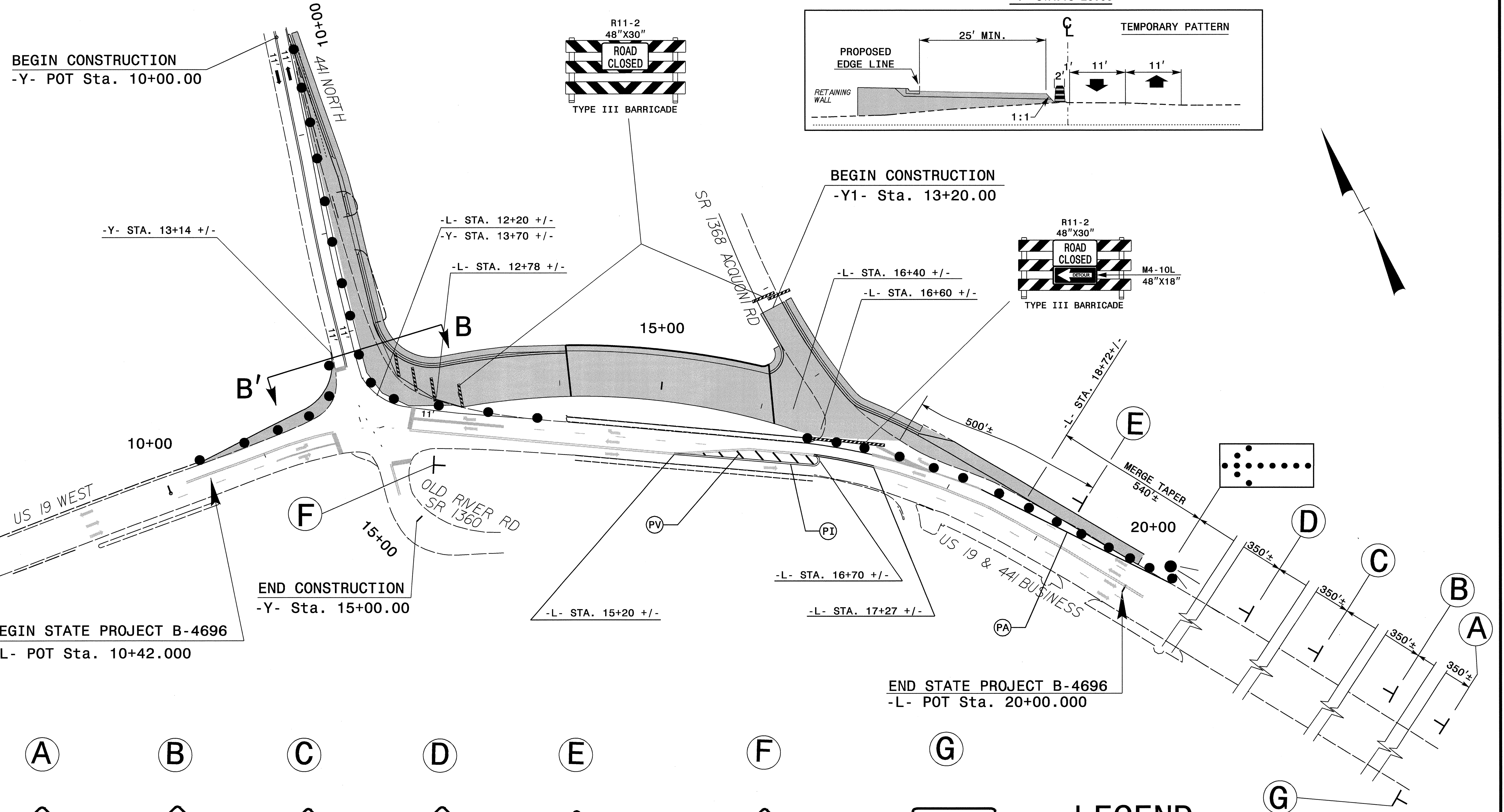
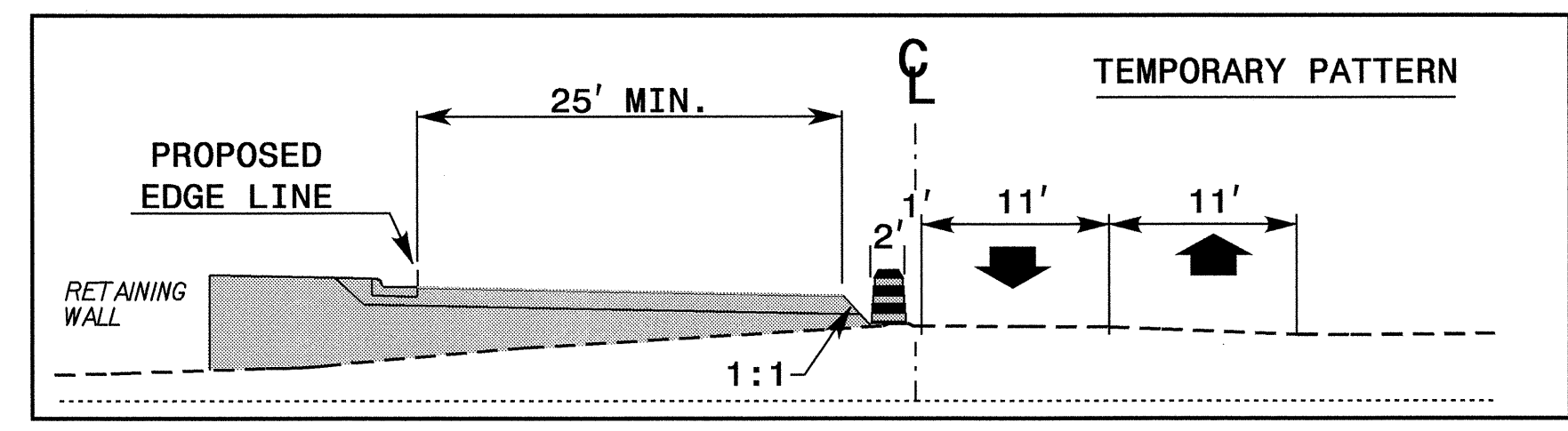
APPROVED: _____ DATE: _____		EXISTING PAVEMENT MARKING	
		<b>DETAIL II</b>	
		SCALE: NONE	REVISIONS
DATE: Dec. 2006	DWG. BY: MHS		
DESIGN BY: MHS	REVIEWED BY: HAL		

02-JAN-2007 11:28  
 \\dot\dfsroot\projstore\proj\projects-b\4696\traffic\trafficcontrol\tcp\top&pm\b4696\_fc\_btcp.dgn  
 halawandos AT WZ1C224250

# B' - B

-Y- STA. 13+20.00

**BEGIN CONSTRUCTION**  
-Y- POT Sta. 10+00.00



- |                    |                      |                    |                      |                                  |                                 |                     |
|--------------------|----------------------|--------------------|----------------------|----------------------------------|---------------------------------|---------------------|
| <b>A</b>           | <b>B</b>             | <b>C</b>           | <b>D</b>             | <b>E</b>                         | <b>F</b>                        | <b>G</b>            |
|                    |                      |                    |                      |                                  |                                 |                     |
| W20-1<br>48" X 48" | W20-5 R<br>48" X 48" | W4-2R<br>48" X 48" | W20-5 R<br>48" X 48" | W20-3<br>48" X 48"               | W20-3<br>48" X 48"              | G20-2a<br>48" X 24" |
|                    |                      |                    |                      | NEXT RIGHT<br>SP-4R<br>48" X 12" | NEXT LEFT<br>SP-4L<br>48" X 12" |                     |

## LEGEND

APPROVED: _____ DATE: _____		EXISTING PAVEMENT MARKING					
		<b>DETAIL IIA</b>					
		SCALE: NONE	REVISIONS				
DATE: Dec. 2006	DESIGN BY: MHS		<table border="1"> <tr> <td> </td> <td> </td> </tr> <tr> <td> </td> <td> </td> </tr> </table>				
DESIGNED BY: MHS	REVIEWED BY: HAL	CADD FILE					

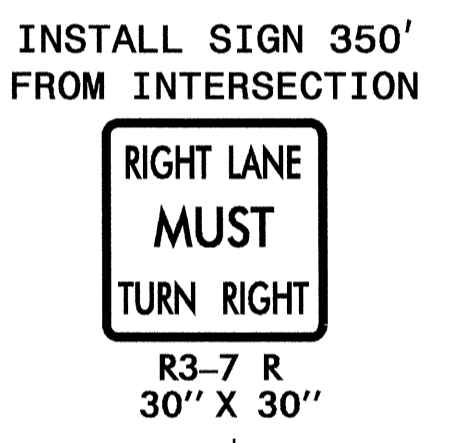
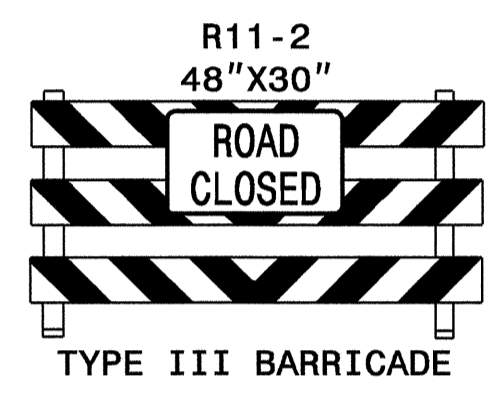
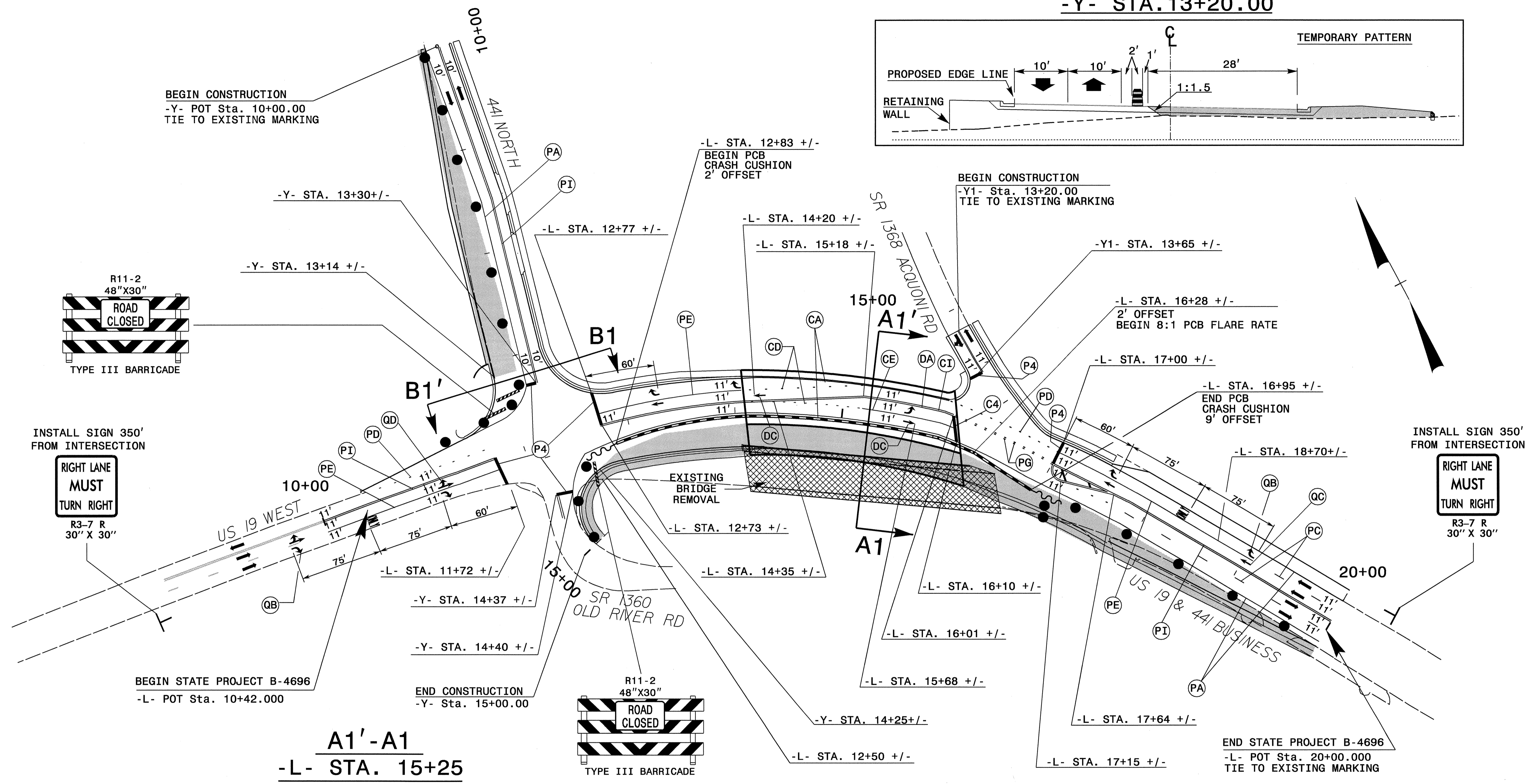
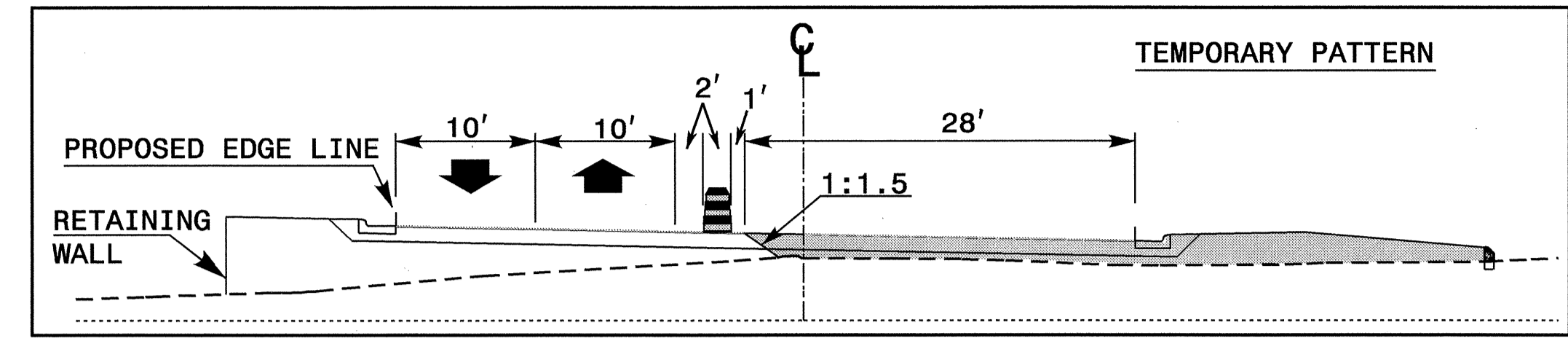
SEE SHEET TCP-3A FOR TEMPORARY PAVEMENT MARKING SCHEDULE

02-JAN-2007 11:27  
 \\dot\dfsroot\dot\projects\top\trafficcontrol\top\tcp&pm\b4696\_tc\_bt\top.dgn  
 mawand\os AI WZ1224230





**B1'-B1**  
-Y- STA. 13+20.00

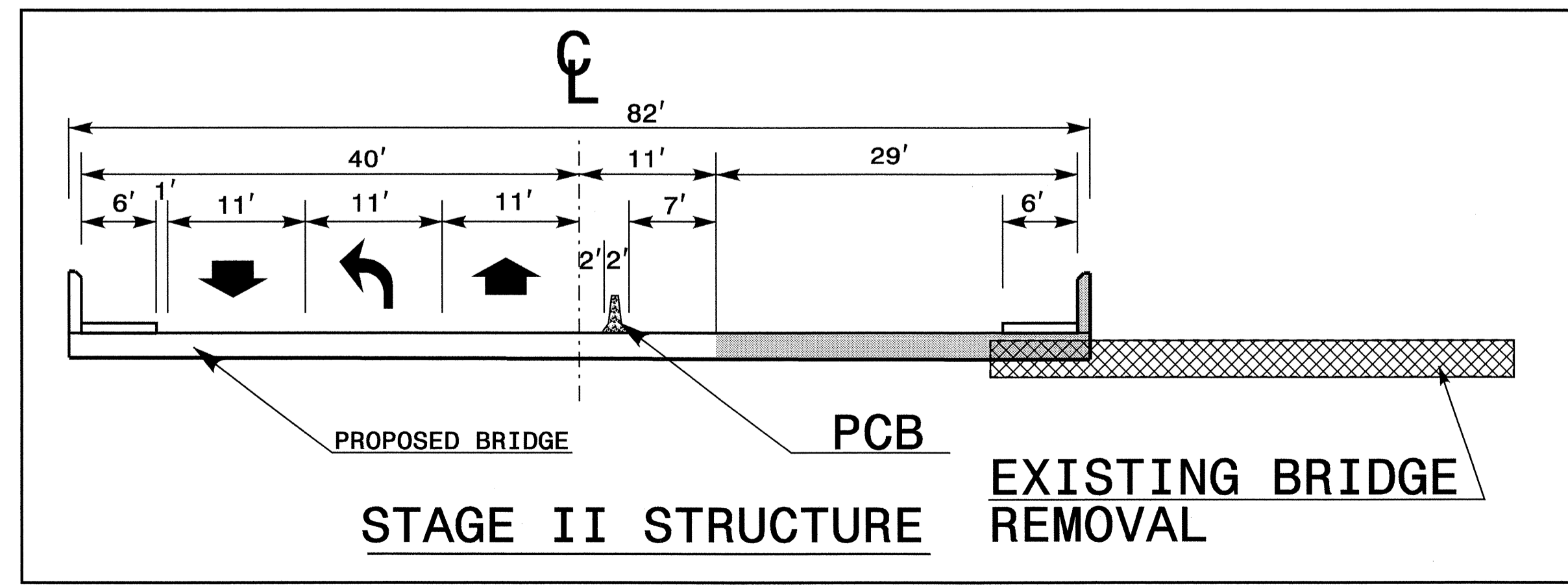
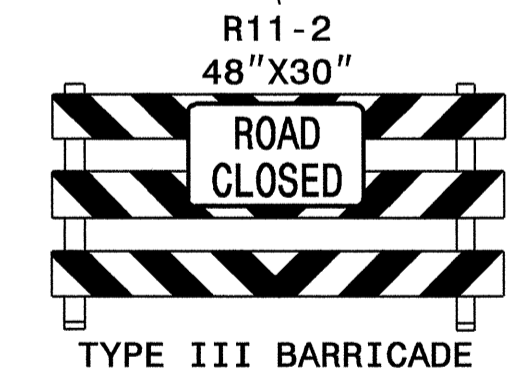


BEGIN STATE PROJECT B-4696  
-L- POT Sta. 10+42.000

END CONSTRUCTION  
-Y- Sta. 15+00.00

END STATE PROJECT B-4696  
-L- POT Sta. 20+00.000  
TIE TO EXISTING MARKING

**A1'-A1**  
-L- STA. 15+25



ALL TEMPORARY MARKINGS ON PROPOSED BRIDGE ARE COLD APPLIED PLASTIC (REMOVABLE TAPE). ALL OTHER TEMPORARY MARKINGS ON ROADWAY ARE PAINT.

SEE SHEET TCP-3A FOR TEMPORARY PAVEMENT MARKING SCHEDULE

APPROVED:	DATE:	<b>DETAIL III</b>	
SCALE: NONE	DATE: Dec. 2006		
DWG. BY: MHS	DESIGN BY: MHS		
REVIEWED BY: HAL			

02-JAN-2007 11:27  
\\g01vfrs007d\proj\stcr\p\proj\projects-b\4696\traffic\trafficcontrol\tcp\top&pm\4696\_tc\_bt\cp.dgn  
\\g01vfrs007d\proj\stcr\p\proj\projects-b\4696\traffic\trafficcontrol\tcp\top&pm\4696\_tc\_bt\cp.dgn

