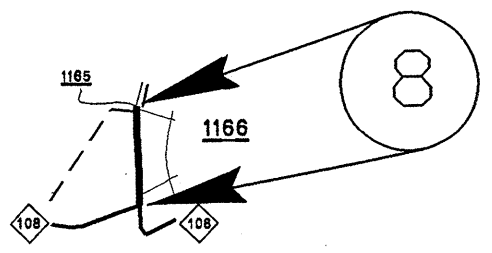
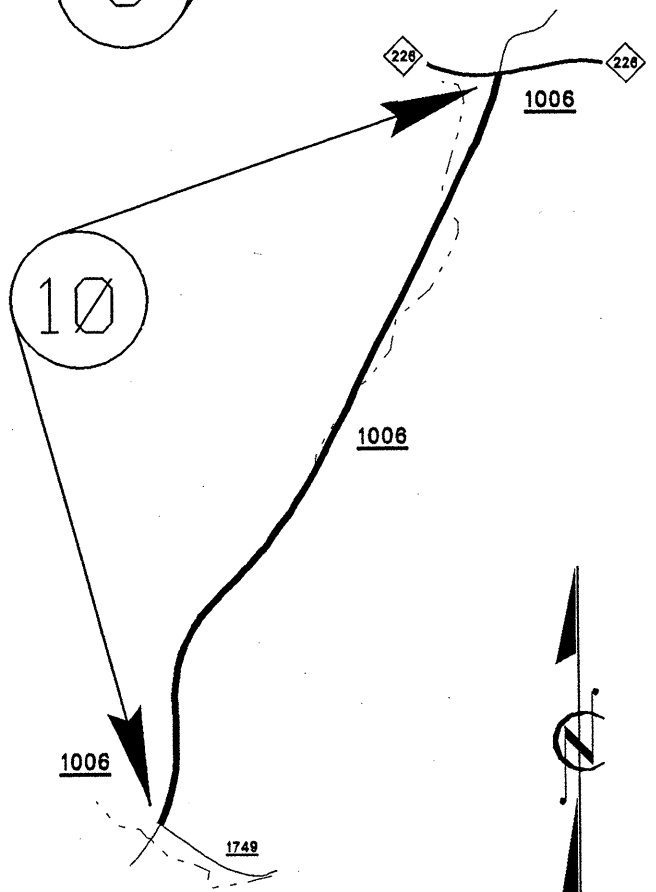
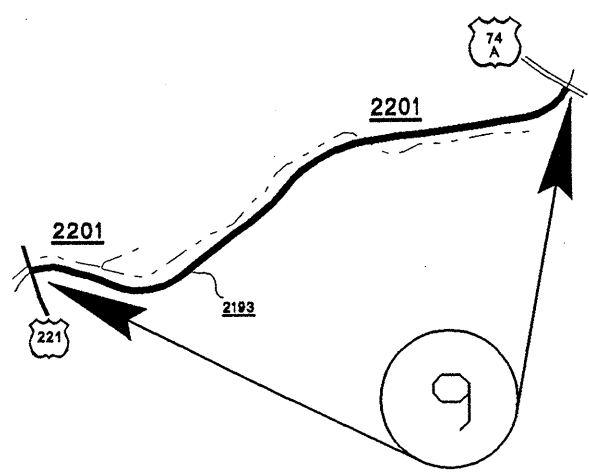
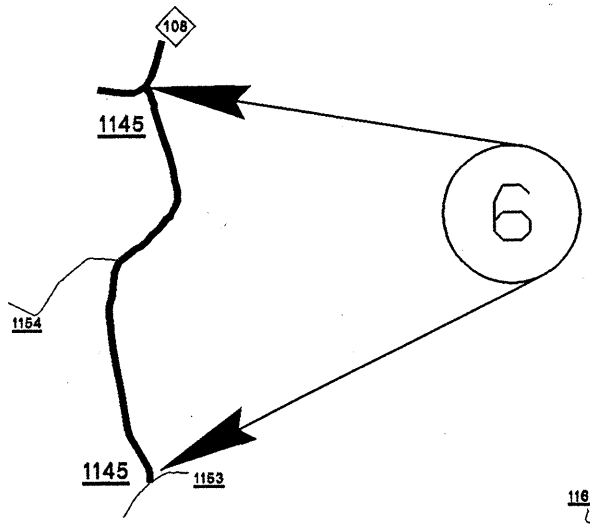
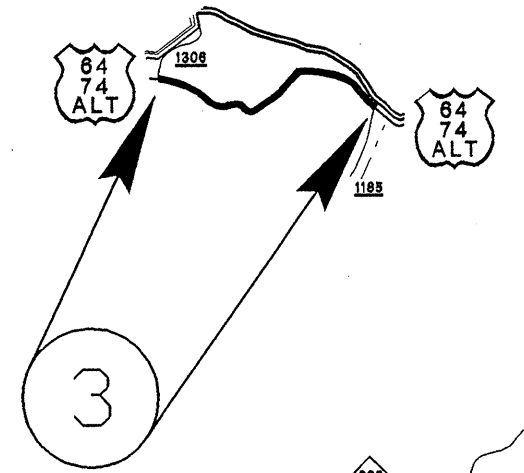
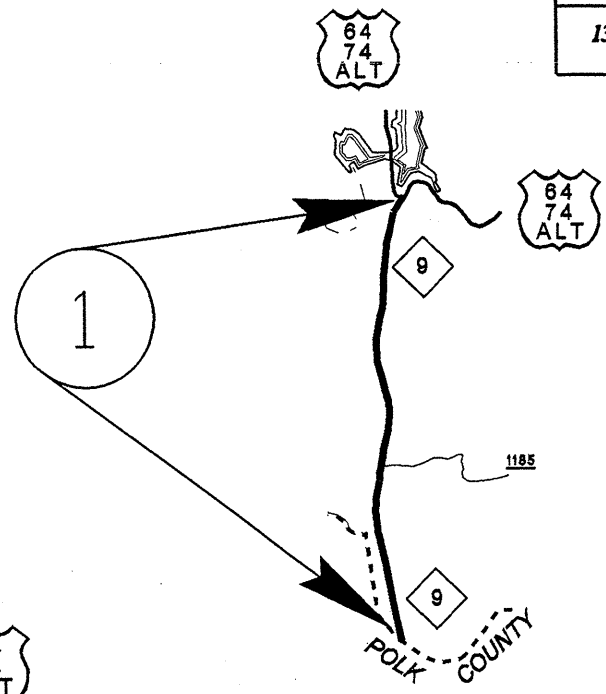
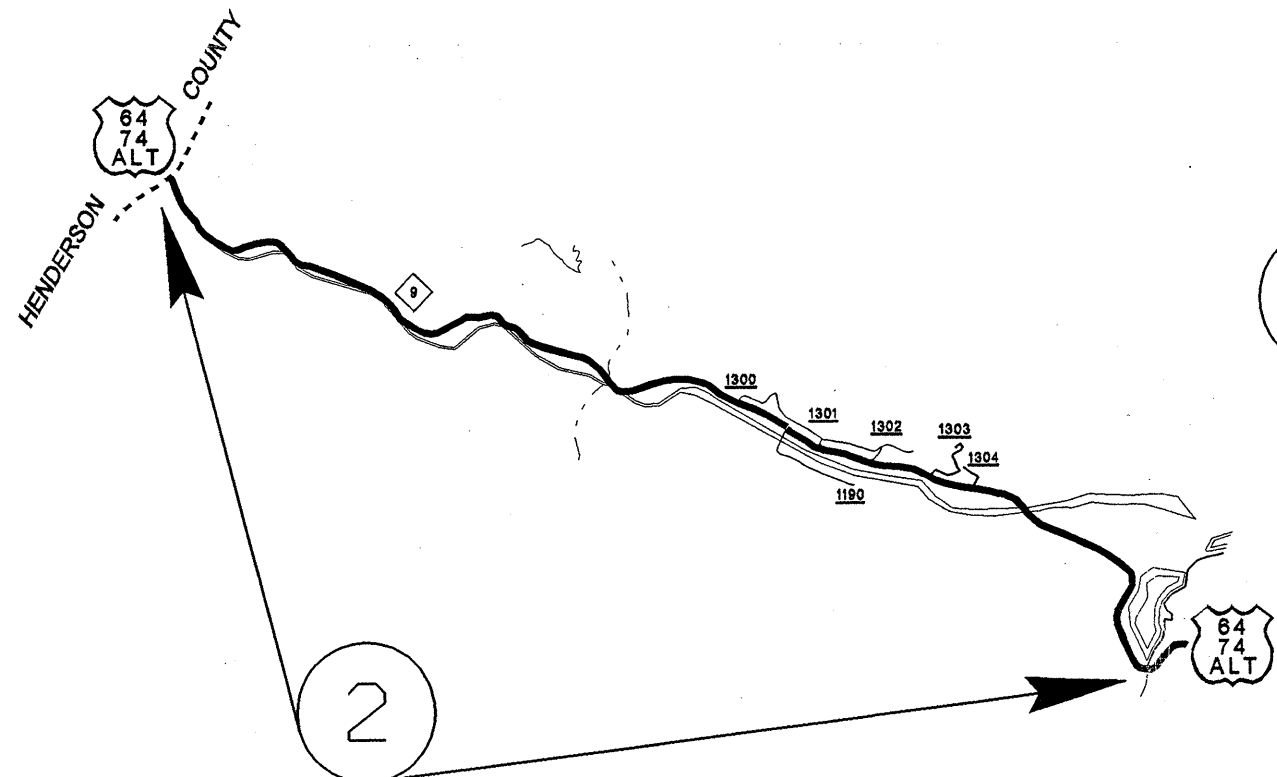


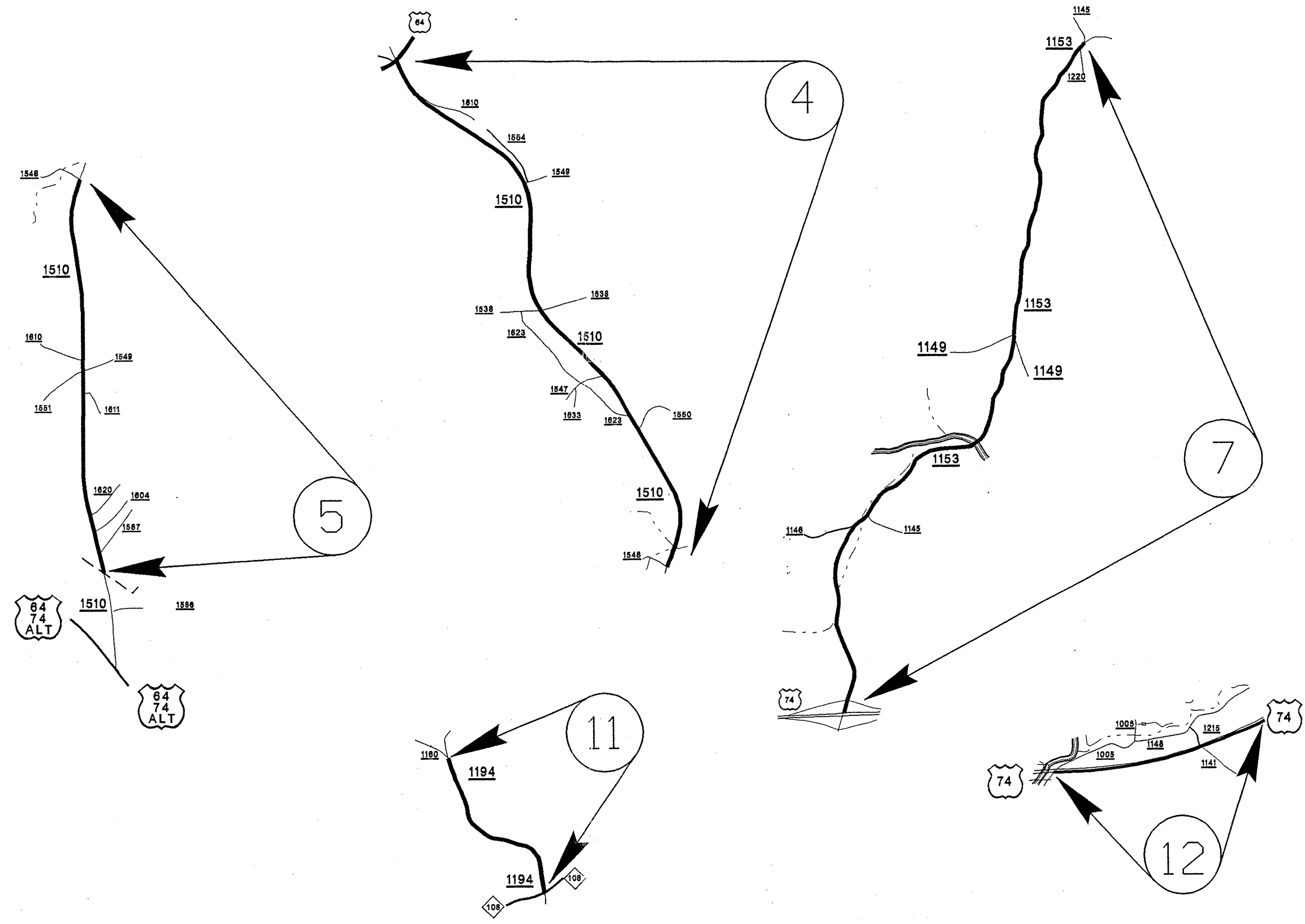
PROJECT NO.	SHEET NO.	TOTAL SHEETS
13CR.10811.5, 13CR.20811.5	1	

C201988



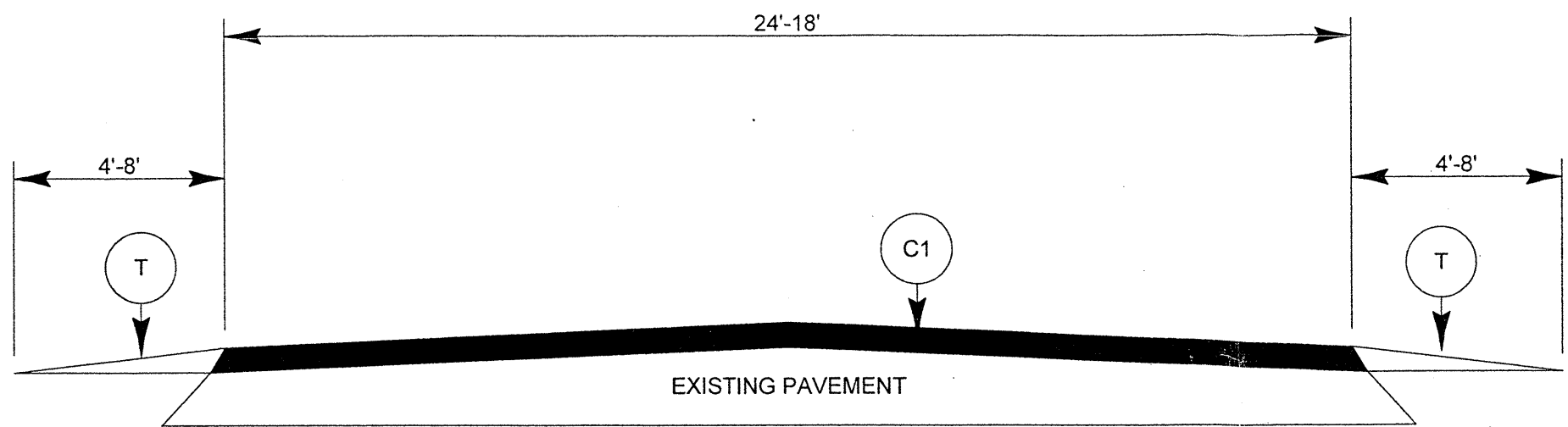
RUTHERFORD COUNTY

PROJECT NO.	SHEET NO.	TOTAL SHEETS
13CR.10811.5, 13CR.20811.5	2	

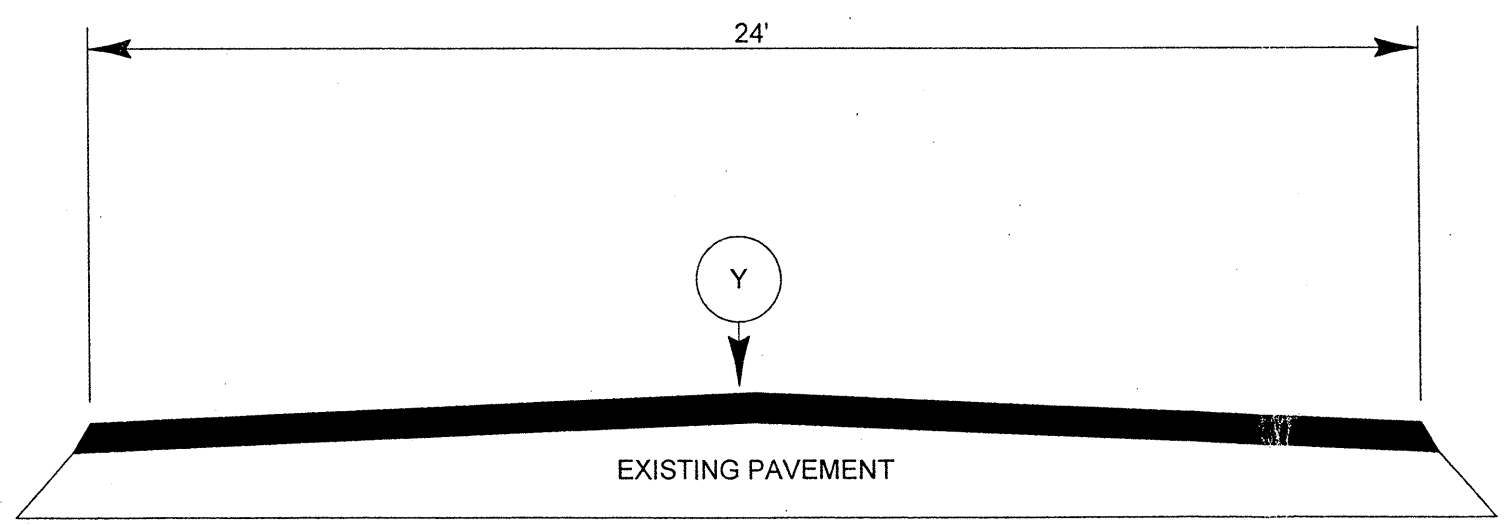


RUTHERFORD COUNTY

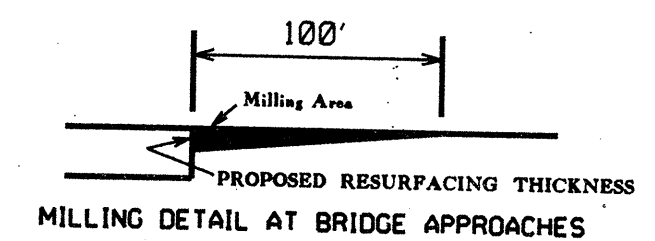
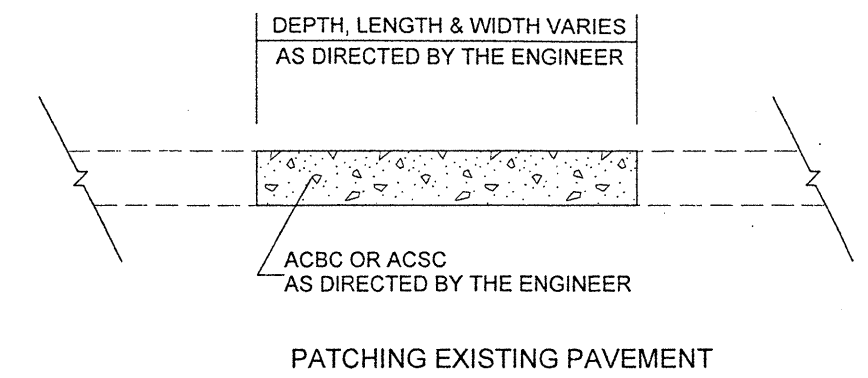
PROJECT NO.	SHEET NO.	TOTAL SHEETS
13CR.10811.5, 13CR.20811.5	3	



TYPICAL SECTION NO. 1

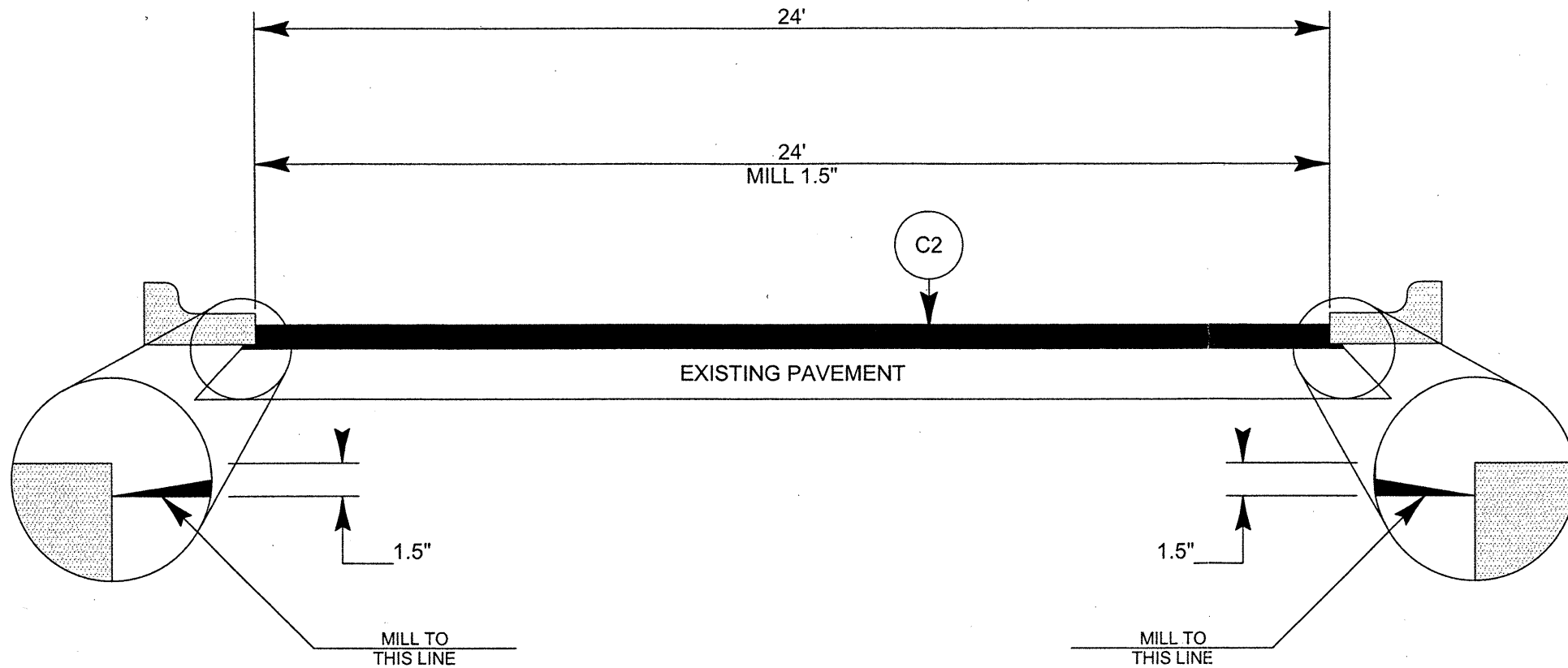


TYPICAL SECTION NO. 2

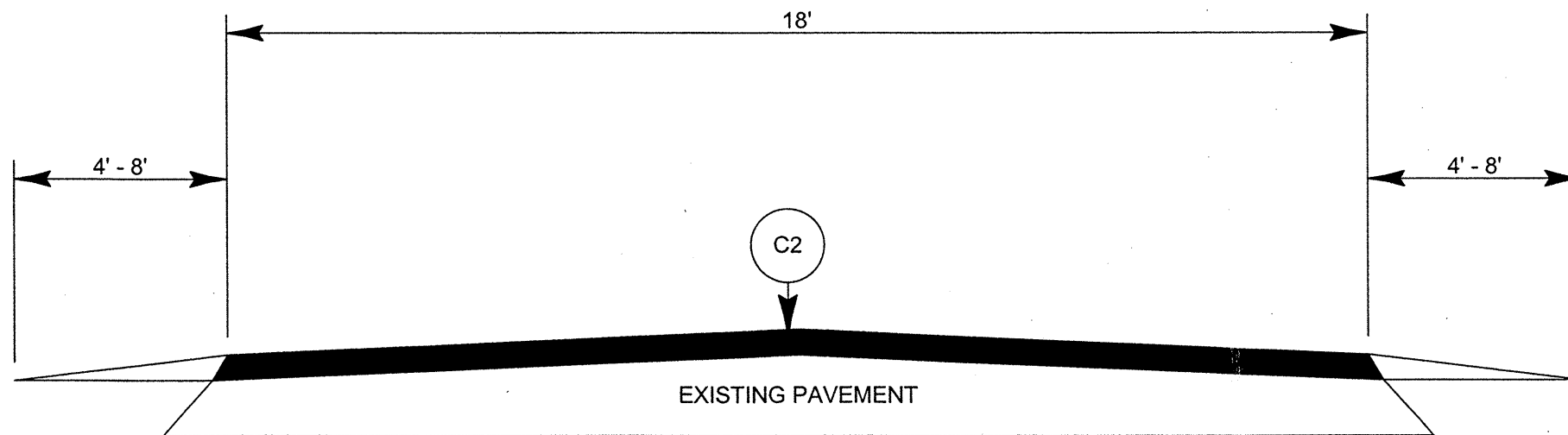


PAVEMENT SCHEDULE	
C1	PROP. APPROX. 1.5" ASPHALT CONCRETE SURFACE COURSE, TYPE S9.5B, AT AN AVERAGE RATE OF 168 LBS. PER SQ. YARD
C2	PROP. APPROX. 1.5" ASPHALT CONCRETE SURFACE COURSE, TYPE SF9.5A, AT AN AVERAGE RATE OF 165 LBS. PER SQ. YARD
T	SHOULDER RECONSTRUCTION
Y	PROP. APPROX. 5/8" ULTRATHIN HOT MIX ASPHALT, TYPE B, AT AN AVERAGE RATE OF 70 LBS. PER SQ. YARD

PROJECT NO.	SHEET NO.	TOTAL SHEETS
13CR.10811.5, 13CR.20811.5, 41712.3,	4	



TYPICAL SECTION NO. 3



TYPICAL SECTION NO. 4

NOTES

ALL UNPAVED ROADS TO BE RESURFACED 50' FROM EDGE OF PAVEMENT OF MAIN PROJECT.
 ALL PAVED S.R. ROADS TO BE RESURFACED TO THE ENDS OF THE RADII, OR AS DIRECTED BY THE ENGINEER.
 EDGES, PAVEMENT WIDENING, INTERSECTIONS AND BRIDGE FLARES ARE INCLUDED IN THE TABLE OF QUANTITIES.
 SHOULDERS AND DITCHES ARE TO BE CONSTRUCTED BY OTHERS UNLESS OTHERWISE INDICATED.
 BRIDGES ARE TO BE RESURFACED AT LOCATIONS AND TO DEPTH AS DIRECTED BY THE ENGINEER.

PROJECT NO.	SHEET NO.	TOTAL NO.
13CR.10811.5, 13CR.20811.5	5	
41712.3		

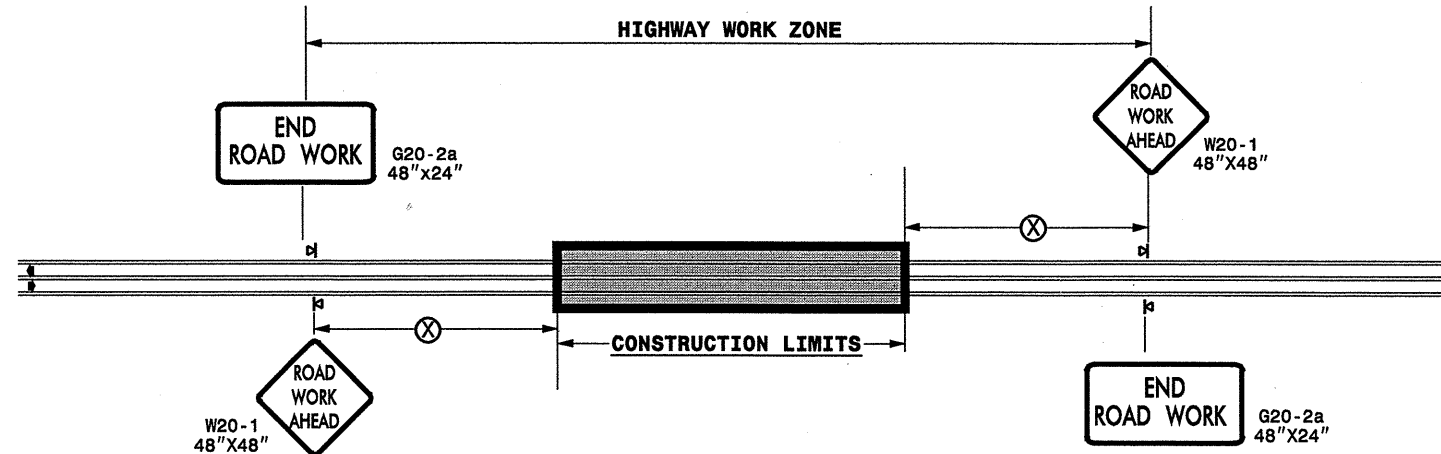
SUMMARY OF QUANTITIES

PROJECT NO	COUNTY	MAP NO	ROUTE	DESCRIPTION	TYP NO	LENGTH MI	WIDTH FT	INCIDENTAL STONE BASE TONS	SHOULDER RECONSTRUCTION SMI	1/2" MILLING SY	SURFACE COURSE, S9.5B TONS	SURFACE COURSE, SF9.5A TON	PG 64-22 PLANT MIX TONS	PATCHING EXISTING PAVEMENT TONS	ULTRATHIN HOT MIX ASPHALT, TYPE B TON	APPLICATION OF ULTRATHIN HOT MIX ASPHALT SY	PG 70-28 PLANT MIX TON	MANHOLES EA	METER OR VALVE BOX EA
13CR.10811.5	Rutherford	1	NC 9	POLK CO. LINE TO US 64/74A	1	0.92	20	46	1.84		1,059		64	13					
		2	US 64/74A	HEND CO LN TO POOL CR BR	2	3.4	24	170						150	1,763	47,872	92	1	
		3	US 64/74-A	FROM SR 1306 TO SR 1185	1	0.7	24	35	1.40		915		55	15					
TOTAL FOR PROJ NO. 13CR.10811.5						5.02		251	3.24		1,974		119	178	1,763	47,872	92	1	
13CR.20811.5	Rutherford	4	SR 1510	FROM US 64 TO SR 1548	1	3.01	20	151	6.02		3,284		197	100					
		5	SR 1510	FROM SR 1548 TO NCL FOREST CITY	1	1.95	20	98	3.90		2,127		128	55					
		6	SR 1145	FROM NC 108 TO SR 1153	1	1.2	18	60	2.40		1,179		71	50					
		7	SR 1153	FROM SR 1145 TO BEG. NEW PVT.	1	3.61	18	181	7.22		3,547		213	150					
		8	SR 1166	FROM NC 108 TO SR 1165	3	0.27	24			3,802.00		347	23	3				2	2
		9	SR 2201	FROM US 74-A TO US 221	1	1.67	20	84	3.34		1,822		109	100					
		10	SR 1006	FROM NC 226 TO SR 1749	1	2.33	20	117	4.66		2,542		153	55					
		11	SR 1194	FROM NC 108 TO SR 1160	4	0.8	18	40	1.60			772	50	26					
TOTAL FOR PROJ NO. 13CR.20811.5						14.84		731	29.14	3,802.00	14,501	1,119	944	539				2	2
41712.3	Rutherford	12	US 74 EB	BRIDGE OVER SR 1005 EASTERLY FOR 1 MILE	2	1	24								494	14,080	26		
TOTAL FOR PROJ NO. 41712.3						1									494	14,080	26		
GRAND TOTAL						20.86		982.00	32.38	3,802.00	16,475	1,119	1,063	717	2,257	61,952	118	3	2

THERMOPLASTIC AND PAINT QUANTITIES

PROJECT NO	COUNTY	MAP NO	ROUTE	DESCRIPTION	4685000000-E		4686000000-E		4697000000-E	4810000000-E	
					4" X 90 M WHITE THERMO LF	4" X 90 M YELLOW THERMO LF	4" X 120 M YELLOW THERMO LF	4" X 120 M WHITE THERMO LF	8" X 120 M WHITE THERMO LF	4" WHITE PAINT LF	4" YELLOW PAINT LF
13CR.10811.5	Rutherford	1	NC 9	POLK CO. LINE TO US 64/74A	9,715		9,715				
		2	US 64/74A	HEND CO LN TO POOL CR BR	35,904		35,904		288		
		3	US 64/74-A	FROM SR 1306 TO SR 1185	7,392		7,392				
TOTAL FOR PROJ NO. 13CR.10811.5					53,011		53,011		288		
13CR.20811.5	Rutherford	4	SR 1510	FROM US 64 TO SR 1548	31,786		31,786				
		5	SR 1510	FROM SR 1548 TO NCL FOREST CITY	20,592		20,592				
		6	SR 1145	FROM NC 108 TO SR 1153					25,344	25,344	
		7	SR 1153	FROM SR 1145 TO BEG. NEW PVT.					76,243	76,243	
		8	SR 1166	FROM NC 108 TO SR 1165			2,851				
		9	SR 2201	FROM US 74-A TO US 221					35,270	35,270	
		10	SR 1006	FROM NC 226 TO SR 1749					49,210	49,210	
		11	SR 1194	FROM NC 108 TO SR 1160					16,896	16,896	
TOTAL FOR PROJ NO. 13CR.20811.5					52,378		55,229		202,963	202,963	
TOTAL FOR PROJ NO. 13CR.20811.5					52,378		55,229		202,963	202,963	
41712.3	Rutherford	12	US 74 EB	BRIDGE OVER SR 1005 EASTERLY FOR 1 MILE	5,280	5,280		2,640			
TOTAL FOR PROJ NO. 41712.3					5,280	5,280		2,640			
TOTAL FOR PROJ NO. 41712.3					10,560		2,640				
GRAND TOTAL					110,669	5,280	108,240	2,640	288	202,963	202,963
GRAND TOTAL					115,949		110,880			405,926	

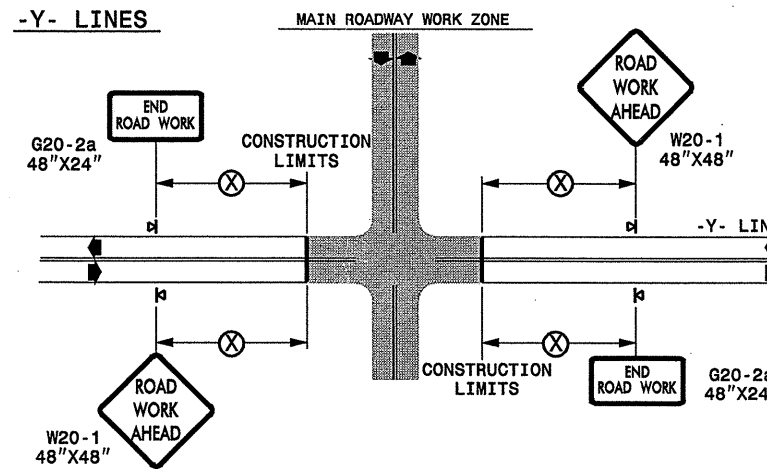
TWO-WAY UNDIVIDED ** (L-LINES)



POSTED SPEED LIMIT (M.P.H.)	RECOMMENDED MINIMUM SIGN SPACING
≤ 50	500'
≥ 55	1000'

STATE OF NORTH CAROLINA
DEPT. OF TRANSPORTATION
DIVISION OF HIGHWAYS
RALEIGH, N.C.

ROADWAYS INTERSECTING ALONG 2 WAY UNDIVIDED WORK ZONE (Y-LINES)



GENERAL NOTES

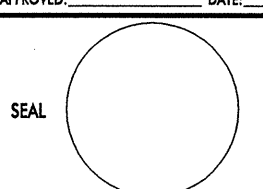

- USE FLUORESCENT ORANGE SHEETING (TYPE VII OR HIGHER) ON ALL ADVANCED WORK ZONE SIGNS.
- DO NOT INSTALL ADVANCE WARNING SIGNS MORE THAN 3 DAYS PRIOR TO BEGINNING OF WORK.
- ALL SIGN SPACING DIMENSIONS ARE APPROXIMATE, FIELD ADJUST AS NECESSARY OR AS DIRECTED.
- USE PORTABLE WORK ZONE SIGNS ONLY WITH PORTABLE WORK ZONE SIGN STANDS SPECIFICALLY DESIGNED FOR ONE ANOTHER. PORTABLE WORK ZONE SIGNS MAY BE ROLL UP OR APPROVED COMPOSITE.
- PROVIDE PORTABLE WORK ZONE SIGN STANDS, PORTABLE SIGNS AND SIGN SHEETING WHICH ARE LISTED ON THE NORTH CAROLINA DEPARTMENT OF TRANSPORTATION'S APPROVED PRODUCT LIST OR ACCEPTED AS TRAFFIC QUALIFIED BY THE TRAFFIC CONTROL UNIT.
- ** TWO-WAY UNDIVIDED ADVANCE WARNING SIGN CONFIGURATION MAY BE USED ON URBAN MULTI-LANE FACILITIES WHERE CONDITIONS LIMIT THE USE OF DUAL MOUNTED SIGNS AS DETERMINED BY THE ENGINEER.

LEGEND

- ◀ PORTABLE SIGN
- ➡ DIRECTION OF TRAFFIC FLOW

SHEET 1 OF 1

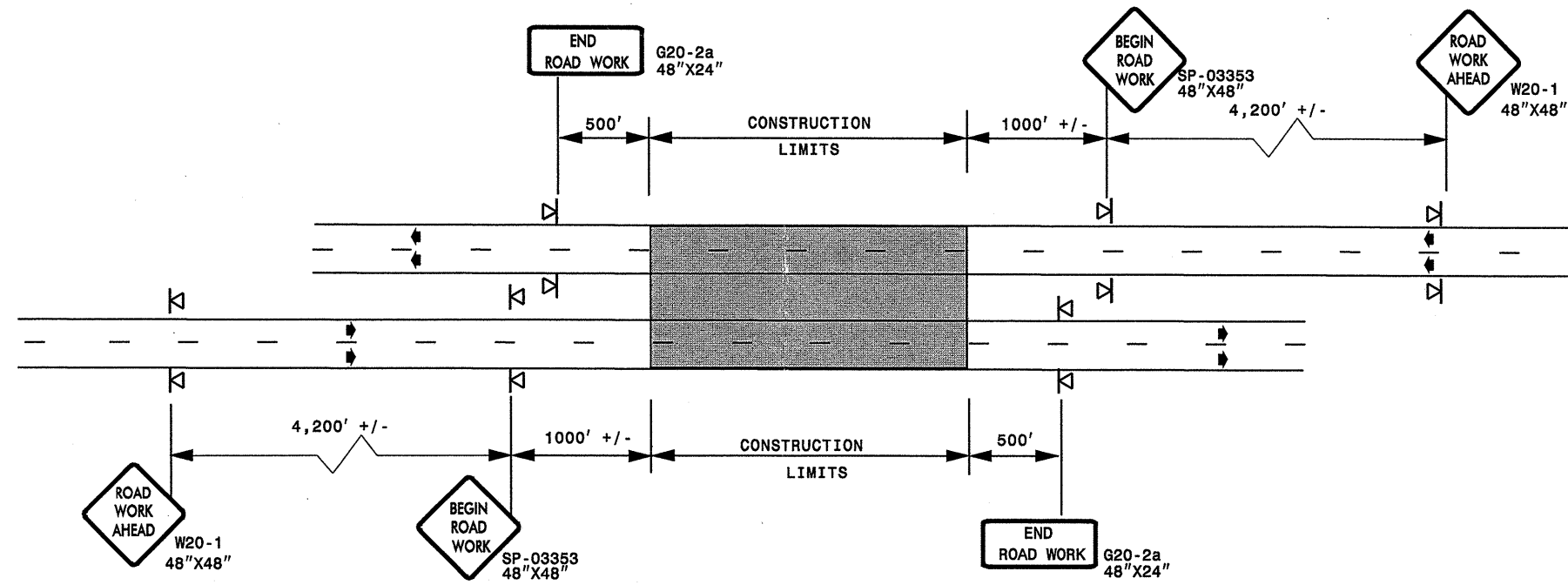
DETAIL DRAWING
FOR TWO-WAY UNDIVIDED
WORK ZONE WARNING SIGNS

APPROVED: _____	DATE: _____	DETAIL DRAWING FOR TWO-WAY UNDIVIDED ADVANCED WORK ZONE WARNING SIGNS	
			
SCALE: NONE		REVISIONS	
DATE: _____		7-98	10/01
DWG. BY: _____		10-98	03/04
DESIGN BY: _____		01/01	11/04
REVIEWED BY: _____	DATE: _____	SCALE: _____	FILE: _____

I0-DEC-2007 19:49
 \\DOT\DFSROOT\TOI\GROUPS\WZTCCC\design\group4\resurfacing\resurfacing2007\div13\ez201988_417123etc_r\utherford.nc9etc.c201988_417123etc_2wayundivurbfrwysjuly2006.dgn
 pseymore AT WZTCC237502

ADVANCE WORK ZONE WARNING SIGNING FOR FREEWAYS (4 LANES OR GREATER)

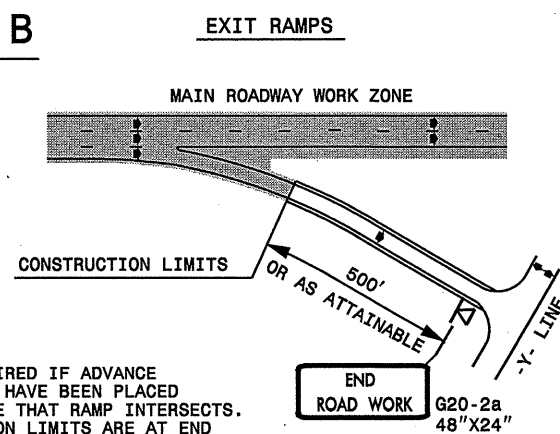
DETAIL A



STATE OF NORTH CAROLINA
DEPT. OF TRANSPORTATION
DIVISION OF HIGHWAYS
RALEIGH, N.C.

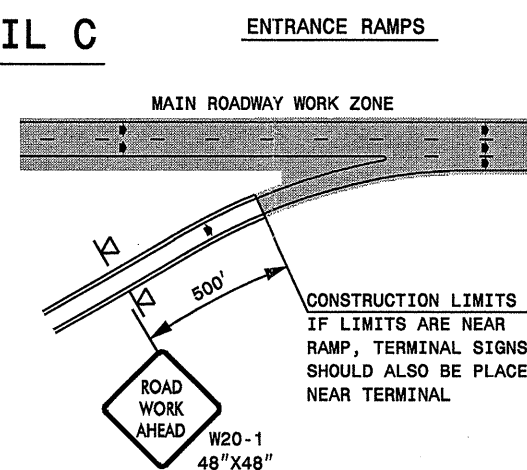
ROADWAYS INTERSECTING ALONG FREEWAY WORK ZONE (Y-LINES)

DETAIL B



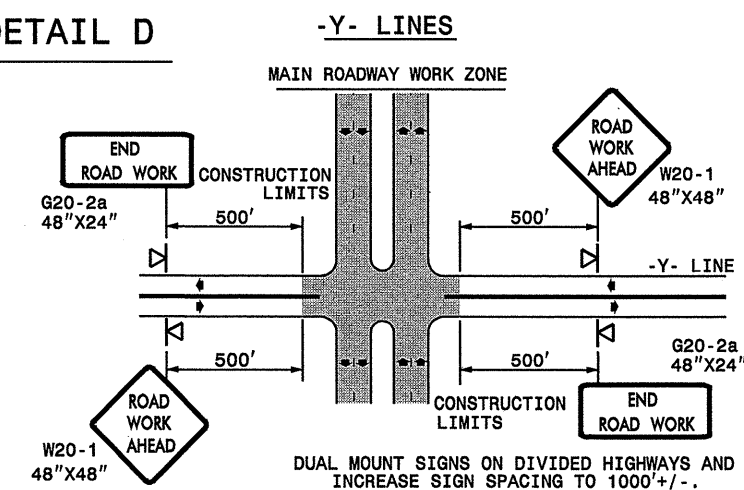
NOTE:
SIGN NOT REQUIRED IF ADVANCE WARNING SIGNS HAVE BEEN PLACED ALONG -Y- LINE THAT RAMP INTERSECTS. IF CONSTRUCTION LIMITS ARE AT END OF RAMP, PLACE SIGN AT END OF RAMP.

DETAIL C



CONSTRUCTION LIMITS IF LIMITS ARE NEAR RAMP, TERMINAL SIGNS SHOULD ALSO BE PLACED NEAR TERMINAL

DETAIL D



DETAIL DRAWING
FOR FREEWAYS
WORK ZONE WARNING SIGNS
(SHORT-DURATION LANE CLOSURES)

GENERAL NOTES

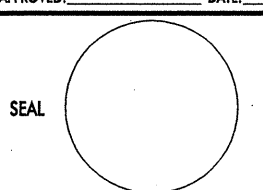

- USE FLUORESCENT ORANGE SHEETING (TYPE VII OR HIGHER) ON ALL ADVANCE WORK ZONE SIGNS.
- DO NOT INSTALL ADVANCE WARNING SIGNS MORE THAN 3 DAYS PRIOR TO BEGINNING OF WORK.
- ALL SIGN SPACING DIMENSIONS ARE APPROXIMATE, FIELD ADJUST AS NECESSARY OR AS DIRECTED.
- USE PORTABLE WORK ZONE SIGNS ONLY WITH PORTABLE WORK ZONE SIGN STANDS SPECIFICALLY DESIGNED FOR ONE ANOTHER. PORTABLE WORK ZONE SIGNS MAY BE ROLL UP OR APPROVED COMPOSITE.
- PROVIDE PORTABLE WORK ZONE SIGN STANDS, PORTABLE SIGNS AND SIGN SHEETING WHICH ARE LISTED ON THE NORTH CAROLINA DEPARTMENT OF TRANSPORTATION'S APPROVED PRODUCT LIST OR ACCEPTED AS TRAFFIC QUALIFIED BY THE TRAFFIC CONTROL UNIT.
- ** TWO-WAY UNDIVIDED ADVANCE WARNING SIGN CONFIGURATION MAY BE USED ON MULTI-LANE FACILITIES WHERE CONDITIONS LIMIT THE USE OF DUAL MOUNTED SIGNS AS DETERMINED BY THE ENGINEER.

LEGEND

▣ PORTABLE SIGN

➔ DIRECTION OF TRAFFIC FLOW

SHEET 1 OF 1

APPROVED: _____	DATE: _____	DETAIL DRAWING FOR FREEWAYS WORK ZONE WARNING SIGNS	
SEAL 			
SCALE: NONE		REVISIONS	
DATE: _____		7-98	10/01
DWG. BY: _____		10-98	03/04
DESIGN BY: _____		01/01	11/04
REVIEWED BY: _____	CADD FILE		

10-DEC-2007 19:50
 \\D01\DF\SR00101\groups-WZTCCC\designgroup\resurfacing\resurfacing2007\div13\c201988-417123etc_rutherford.nc9set\c201988-417123etc_freelanesgreatJuly2006.dgn
 psey@more AT WZTCCC

