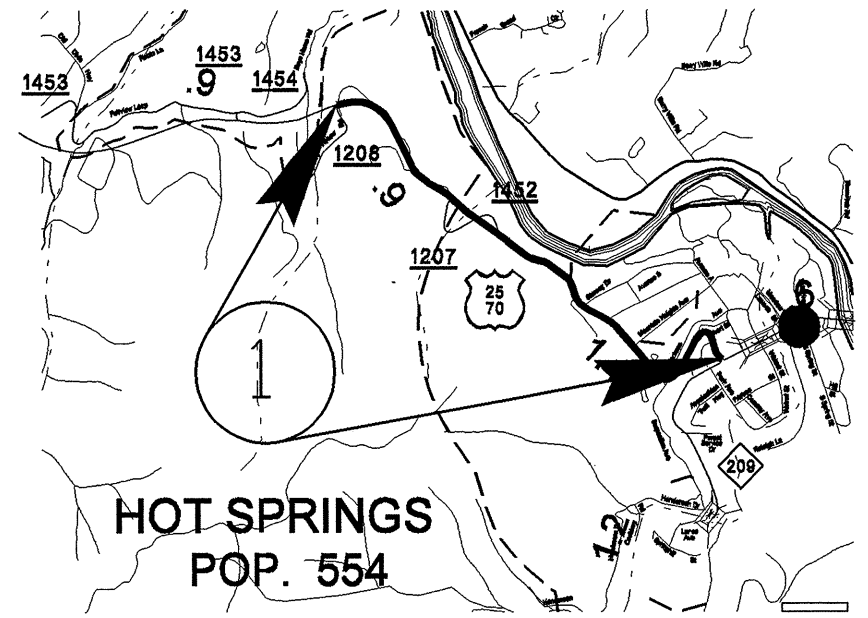
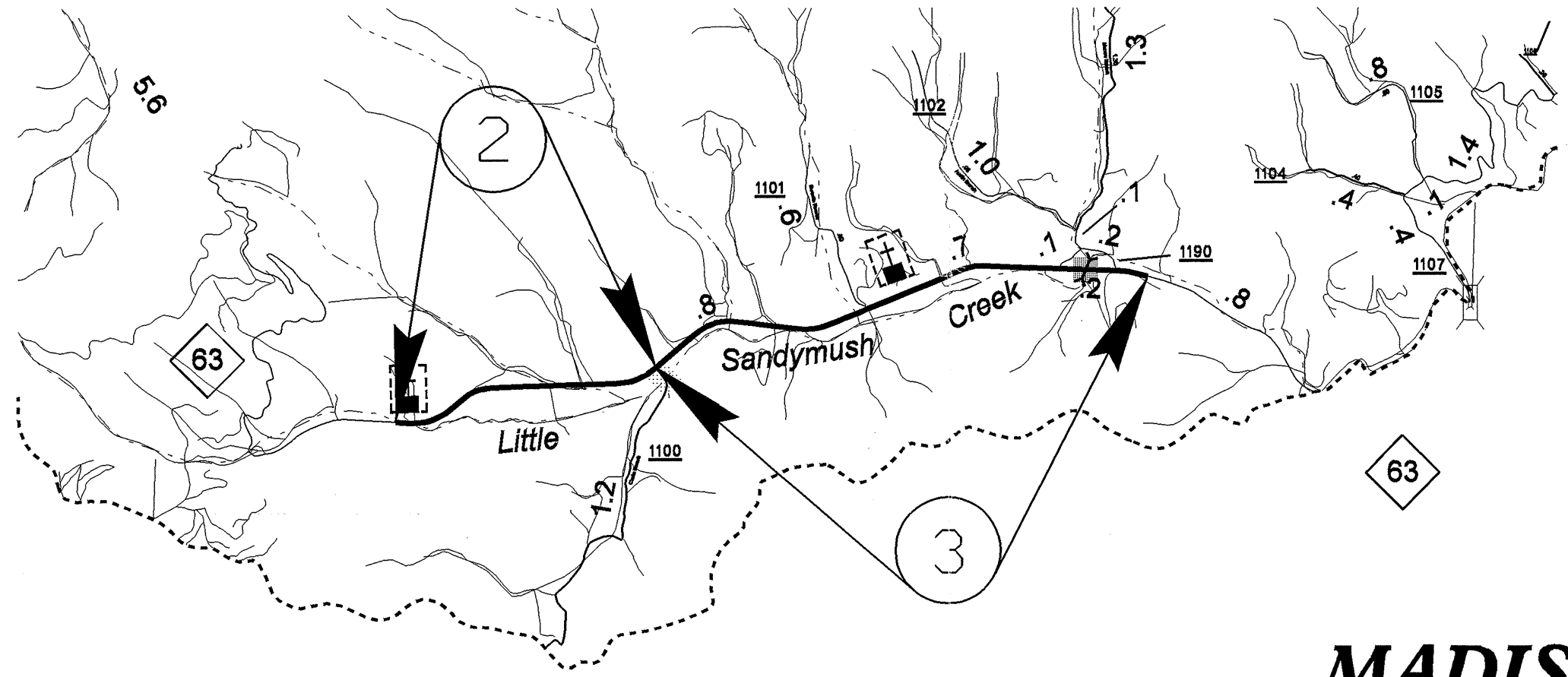
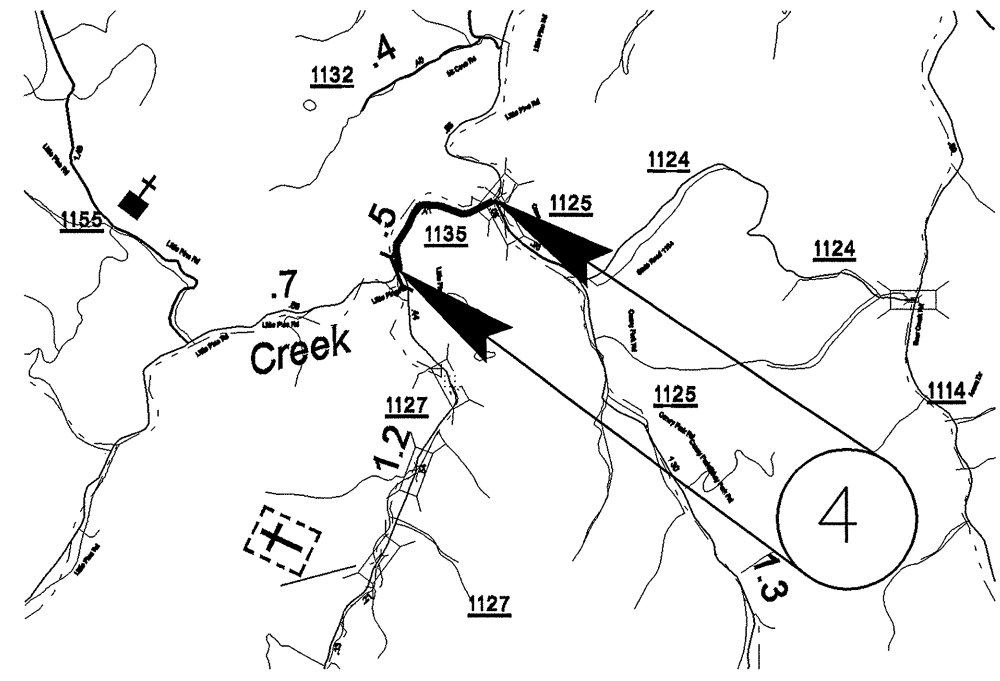


PROJECT NO.	SHEET NO.	TOTAL SHEETS
13CR.10571.5 , 13CR.20571.5	1	1

C201981

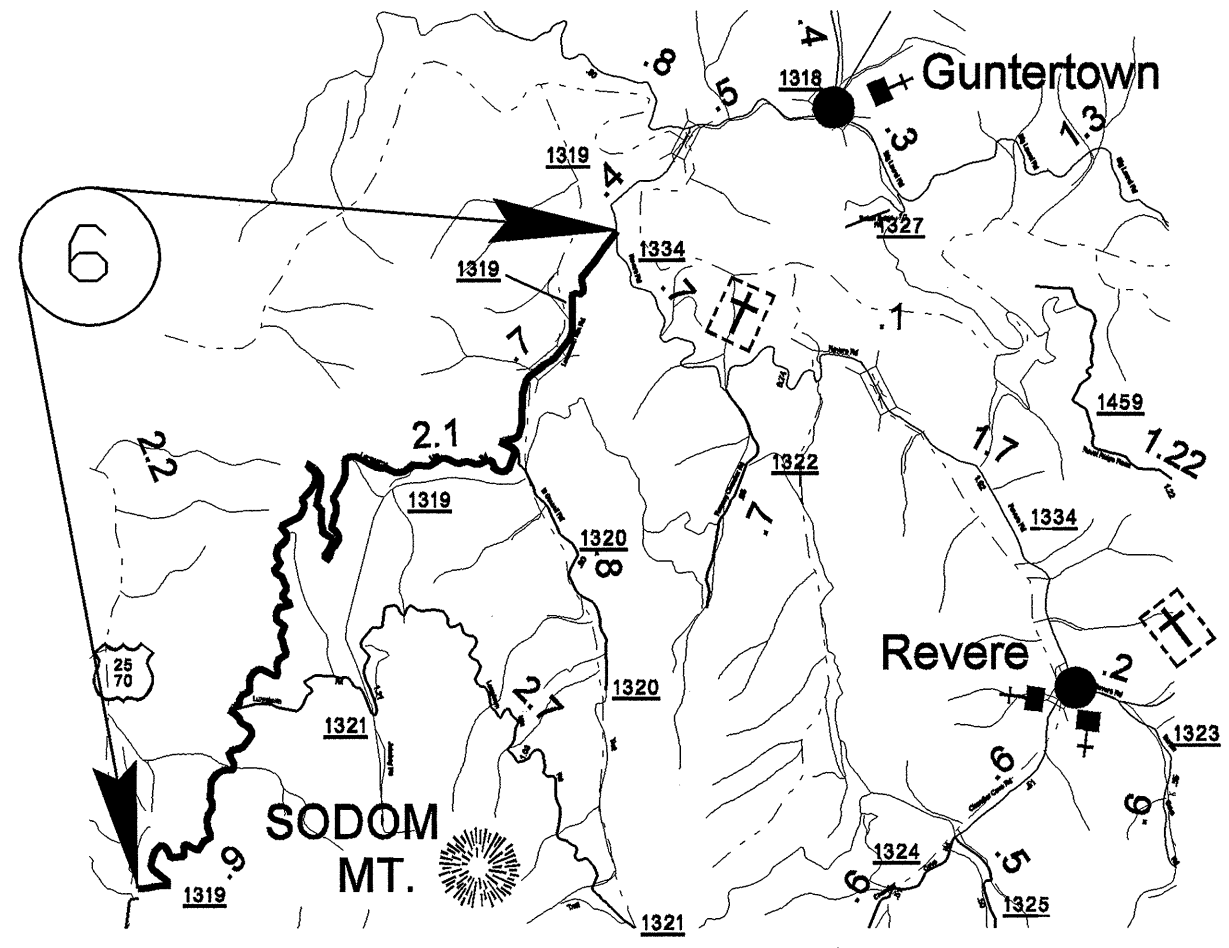
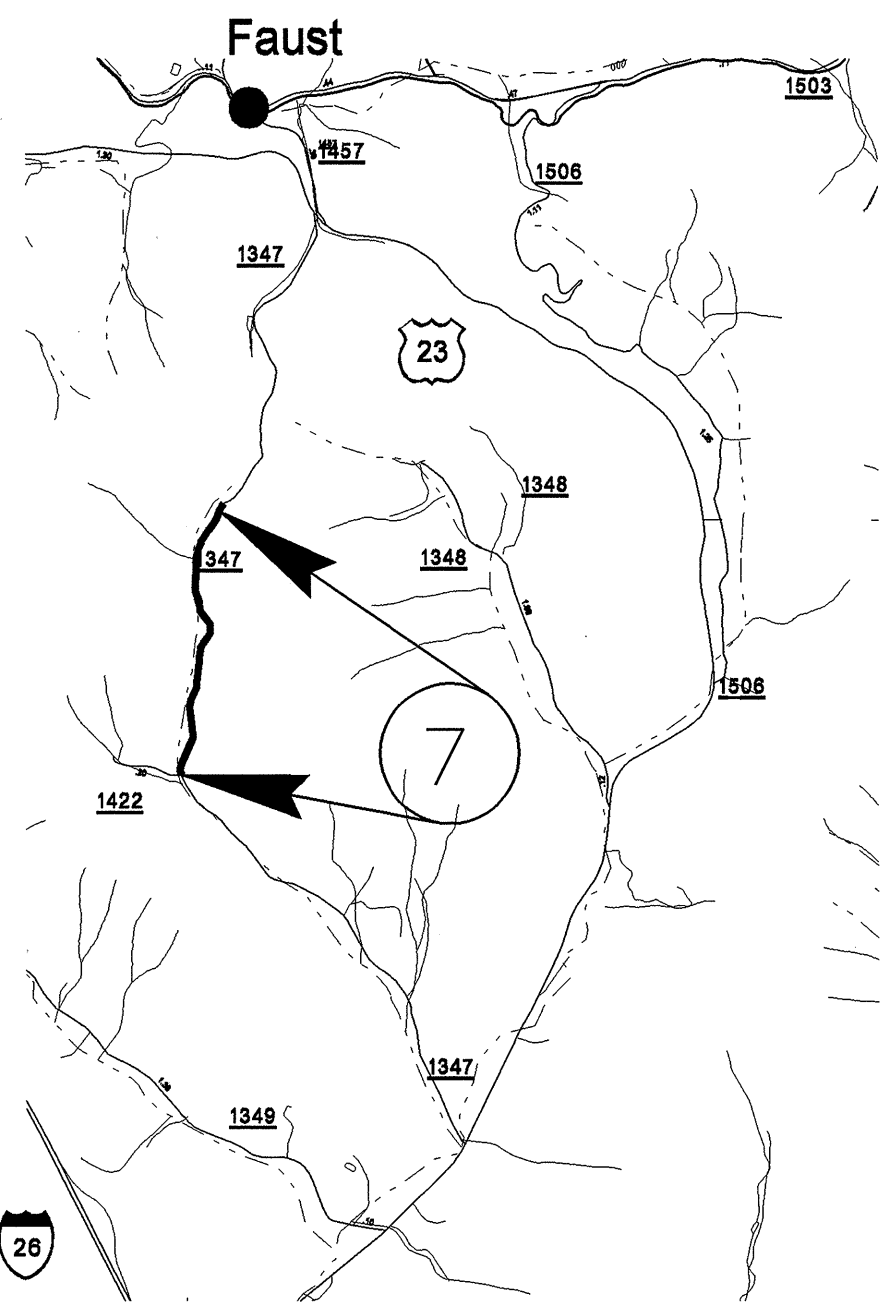
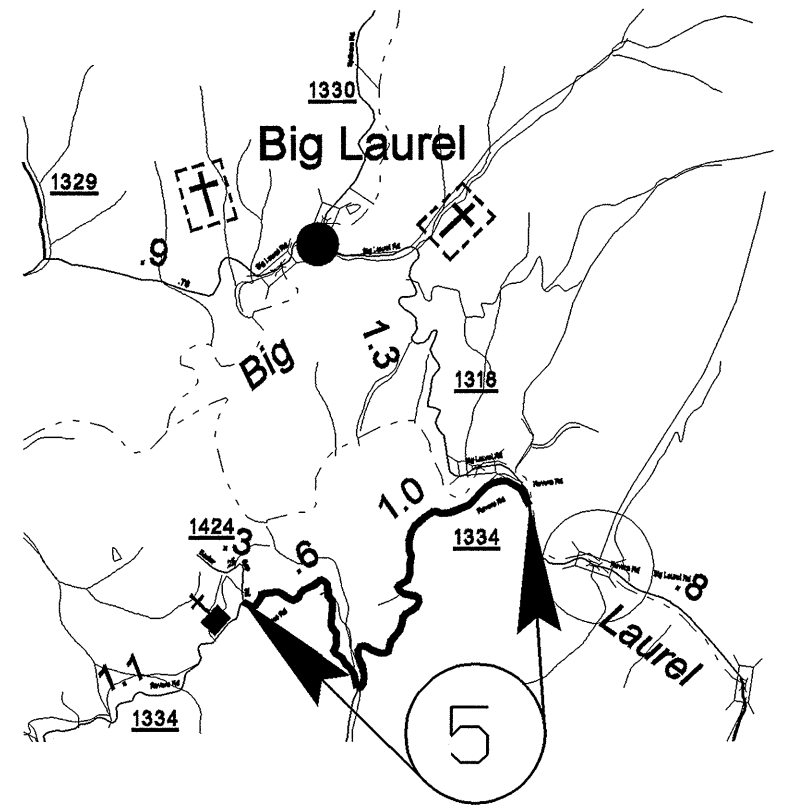


HOT SPRINGS
POP. 554



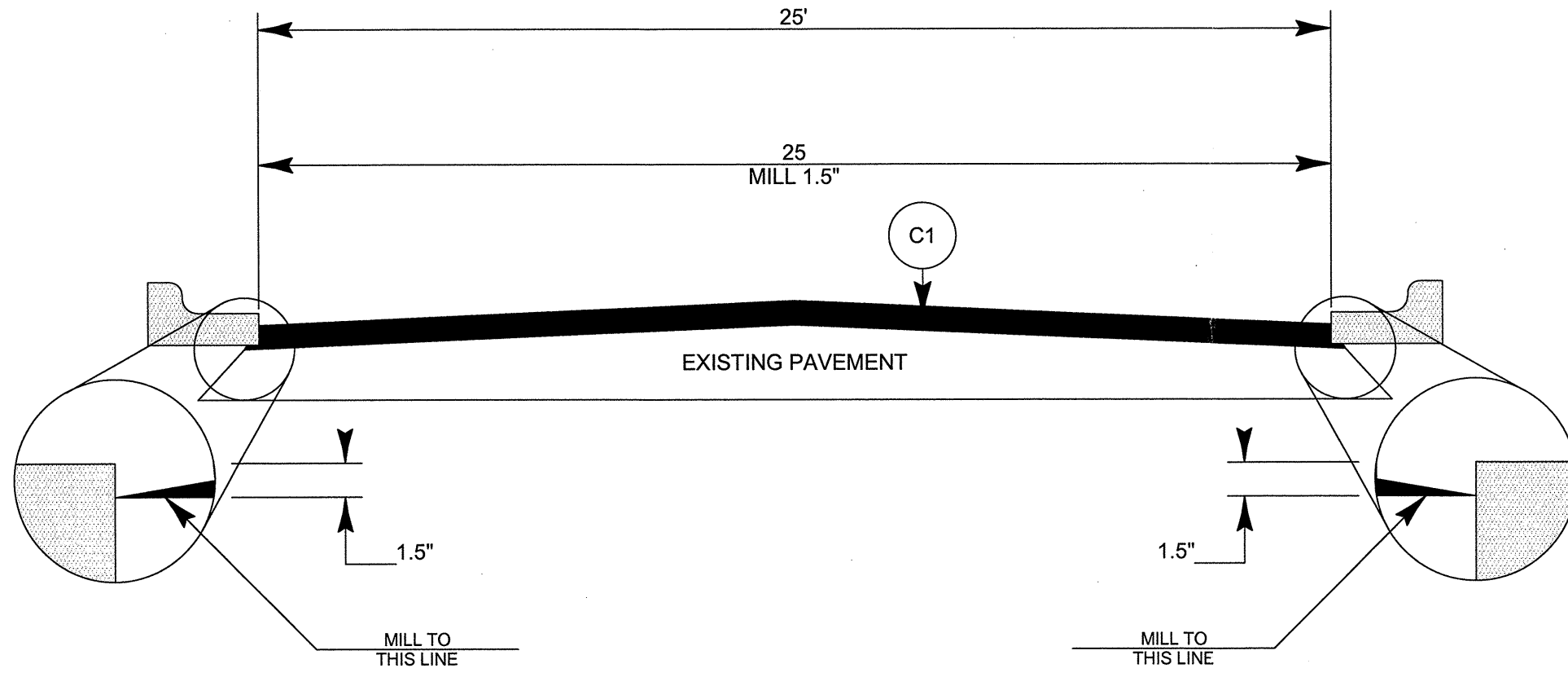
MADISON COUNTY

PROJECT NO.	SHEET NO.	TOTAL SHEETS
13CR.10571.5 , 13CR.20571.5	2	

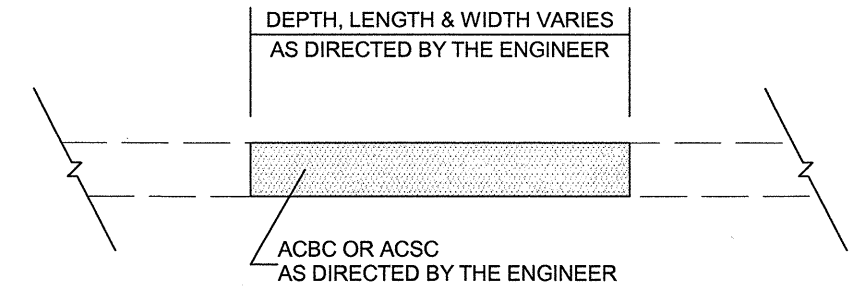


MADISON COUNTY

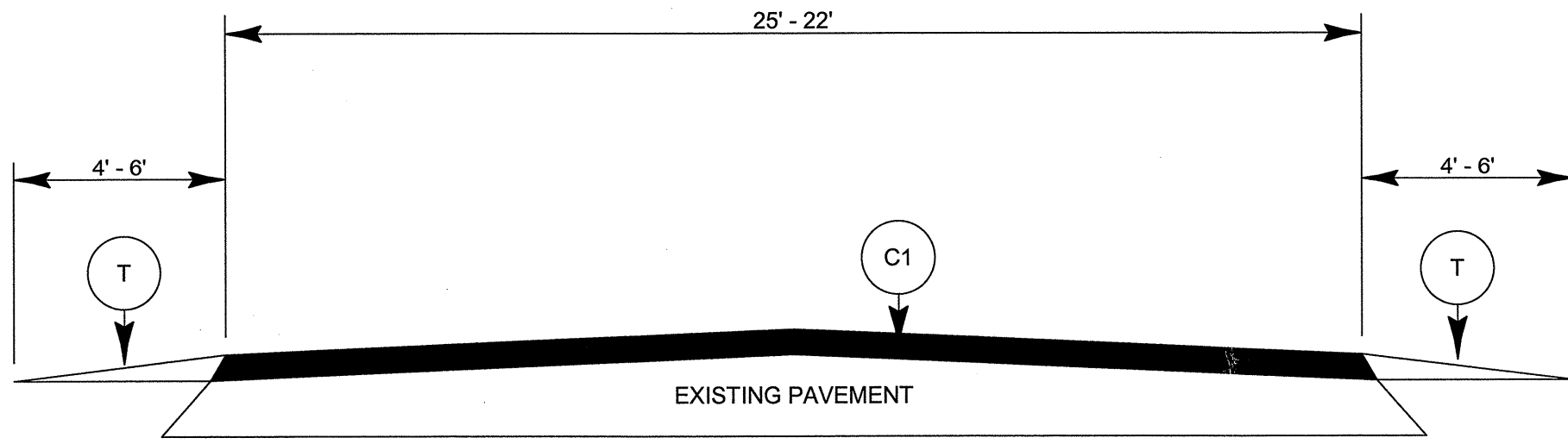
PROJECT NO.	SHEET NO.	TOTAL SHEETS
13CR.10571.5, 13CR.20571.5	3	



TYPICAL SECTION NO. 1



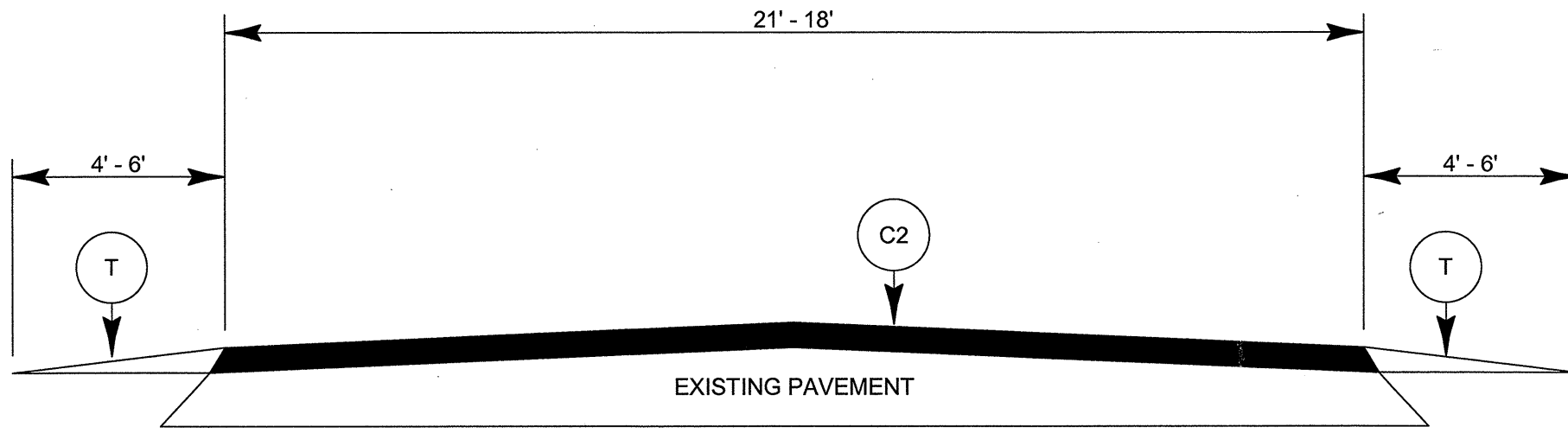
PATCHING EXISTING PAVEMENT



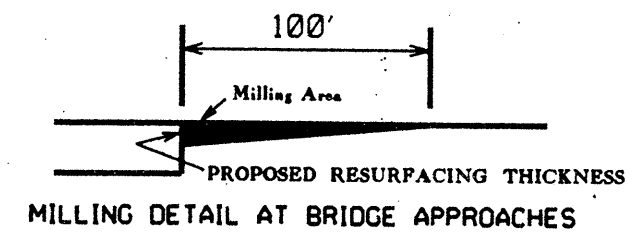
TYPICAL SECTION NO. 2

PAVEMENT SCHEDULE	
C1	PROP. APPROX. 1.5" ASPHALT CONCRETE SURFACE COURSE, TYPE S9.5B, AT AN AVERAGE RATE OF 168 LBS. PER SQ. YARD
C2	PROP. APPROX. 1.5" ASPHALT CONCRETE SURFACE COURSE, TYPE SF9.5A, AT AN AVERAGE RATE OF 165 LBS. PER SQ. YARD
T	SHOULDER RECONSTRUCTION

PROJECT NO.	SHEET NO.	TOTAL SHEETS
13CR.10571.5, 13CR.20571.5	4	



TYPICAL SECTION NO. 3



NOTES
 ALL UNPAVED ROADS TO BE RESURFACED 50' FROM EDGE OF PAVEMENT OF MAIN PROJECT.
 ALL PAVED S.R. ROADS TO BE RESURFACED TO THE ENDS OF THE RADII, OR AS DIRECTED BY THE ENGINEER.
 EDGES, PAVEMENT WIDENING, INTERSECTIONS AND BRIDGE FLARES ARE INCLUDED IN THE TABLE OF QUANTITIES.
 SHOULDERS AND DITCHES ARE TO BE CONSTRUCTED BY OTHERS UNLESS OTHERWISE INDICATED.
 BRIDGES ARE TO BE RESURFACED AT LOCATIONS AND TO DEPTH AS DIRECTED BY THE ENGINEER.

PROJECT NO.	SHEET NO.	TOTAL NO.
13CR.10571.5, 13CR.20571.5	5	

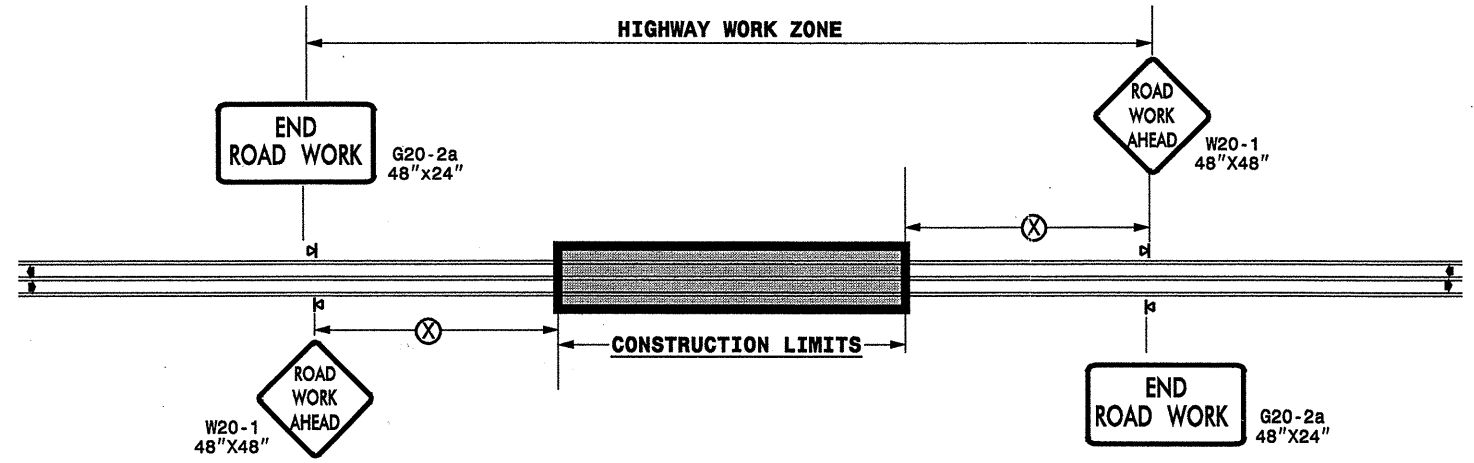
SUMMARY OF QUANTITIES

PROJECT NO	COUNTY	MAP NO	ROUTE	DESCRIPTION	TYP NO	LENGTH MI	WIDTH FT	INCIDENTAL STONE BASE TONS	SHOULDER RECONSTRUCTI ON SMI	1½" MILLING SY	SURFACE COURSE, S9.5B TONS	SURFACE COURSE, SF9.5A TON	PG 64-22 PLANT MIX TONS	PATCHING EXISTING PAVEMENT TONS	METER OR VALVE BOX EA
13CR.10571.5	Madison	1	US-25/70	SR-1208 TO NC-209	1,2	1.45	25	84	1.68	8,800	1,975		118	50	1
		2	NC-63	1 MILE NORTH OF SR-1100 TO SR-1100	2	1	22	50	2		1,199		72	50	
		3	NC-63	SR-1100 TO 0.3 MILES SOUTH OF SR-1190	2	2	22	100	4		2,399		144	40	
TOTAL FOR PROJ NO. 13CR.10571.5						4.45		234	7.68	8,800	5,573		334	140	1
13CR.20571.5	Madison	4	SR 1135	FROM SR 1125 TO SR 1127	3	0.5	21	25	1			628	41	75	
		5	SR 1334	FROM SR 1424 TO SR 1318	3	1.56	19	78	3.12			1,726	112	310	
		6	SR 1319	FROM US 25/70 TO SR 1334	3	3.7	18	185	7.4			3,977	259	55	
		7	SR 1347	FROM SR 1422 TO EOP	3	0.8	20	40	1.6			956	62	285	
TOTAL FOR PROJ NO. 13CR.20571.5						6.56		328	13.12			7,287	474	725	
GRAND TOTAL						11.01		562	20.8	8,800	5,573		808	865	1

THERMOPLASTIC AND PAINT QUANTITIES

PROJECT NO	COUNTY	MAP NO	ROUTE	DESCRIPTION	4685000000-E	4686000000-E	4697000000-E	4710000000-E	4721000000-E	4810000000-E	4810000000-E
					4" X 90 M WHITE THERMO LF	4" X 120 M YELLOW THERMO LF	8" X 120 M WHITE THERMO LF	24" X 120 M WHITE THERMO LF	THERMO MSG SCHOOL 120 M EA	4" WHITE PAINT LF	4" YELLOW PAINT LF
13CR.10571.5	Madison	1	US-25/70	SR-1208 TO NC-209	8,870	15,312	50	113	12		
		2	NC-63	1 MILE NORTH OF SR-1100 TO SR-1100	10,560	10,560					
		3	NC-63	SR-1100 TO 0.3 MILES SOUTH OF SR-1190	21,120	21,120					
TOTAL FOR PROJ NO. 13CR.10571.5					40,550	46,992	50	113	12		4,000
13CR.20571.5	Madison	4	SR 1135	FROM SR 1125 TO SR 1127						10,560	10,560
		5	SR 1334	FROM SR 1424 TO SR 1318						32,947	32,947
		6	SR 1319	FROM US 25/70 TO SR 1334						78,144	78,144
		7	SR 1347	FROM SR 1422 TO EOP						16,896	16,896
TOTAL FOR PROJ NO. 13CR.20571.5										138,547	138,547
GRAND TOTAL					40,550	46,992	50	113	12	138,547	142,547
281,094											

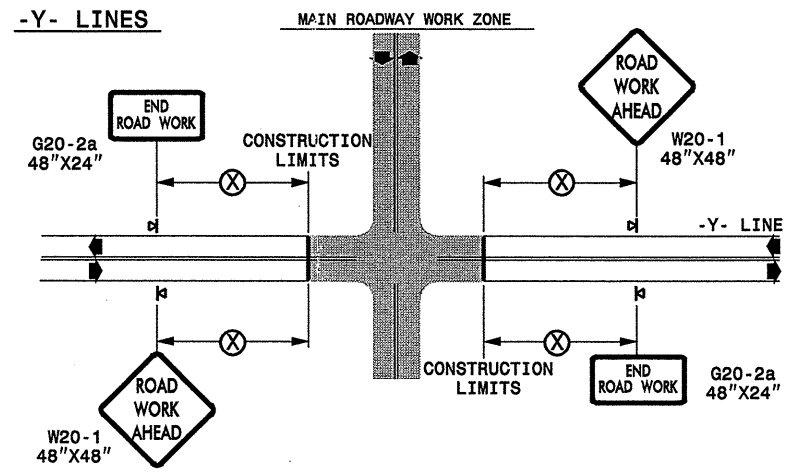
TWO-WAY UNDIVIDED ** (L-LINES)



POSTED SPEED LIMIT (M.P.H.)	RECOMMENDED MINIMUM SIGN SPACING
≤ 50	500'
≥ 55	1000'

STATE OF NORTH CAROLINA
DEPT. OF TRANSPORTATION
DIVISION OF HIGHWAYS
RALEIGH, N.C.

ROADWAYS INTERSECTING ALONG 2 WAY UNDIVIDED WORK ZONE (Y-LINES)



GENERAL NOTES

- USE FLUORESCENT ORANGE SHEETING (TYPE VII OR HIGHER) ON ALL ADVANCED WORK ZONE SIGNS.
- DO NOT INSTALL ADVANCE WARNING SIGNS MORE THAN 3 DAYS PRIOR TO BEGINNING OF WORK.
- ALL SIGN SPACING DIMENSIONS ARE APPROXIMATE, FIELD ADJUST AS NECESSARY OR AS DIRECTED.
- USE PORTABLE WORK ZONE SIGNS ONLY WITH PORTABLE WORK ZONE SIGN STANDS SPECIFICALLY DESIGNED FOR ONE ANOTHER. PORTABLE WORK ZONE SIGNS MAY BE ROLL UP OR APPROVED COMPOSITE.
- PROVIDE PORTABLE WORK ZONE SIGN STANDS, PORTABLE SIGNS AND SIGN SHEETING WHICH ARE LISTED ON THE NORTH CAROLINA DEPARTMENT OF TRANSPORTATION'S APPROVED PRODUCT LIST OR ACCEPTED, AS TRAFFIC QUALIFIED BY THE TRAFFIC CONTROL UNIT.
- ** TWO-WAY UNDIVIDED ADVANCE WARNING SIGN CONFIGURATION MAY BE USED ON URBAN MULTI-LANE FACILITIES WHERE CONDITIONS LIMIT THE USE OF DUAL MOUNTED SIGNS AS DETERMINED BY THE ENGINEER.

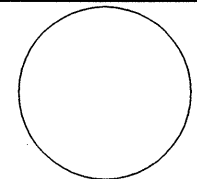

LEGEND

☒ PORTABLE SIGN

➔ DIRECTION OF TRAFFIC FLOW

DETAIL DRAWING
FOR TWO-WAY UNDIVIDED
WORK ZONE WARNING SIGNS

SHEET 1 OF 1

APPROVED: _____	DATE: _____	DETAIL DRAWING FOR TWO-WAY UNDIVIDED ADVANCED WORK ZONE WARNING SIGNS	
SEAL 			
SCALE: NONE		REVISIONS	
DATE: _____		7-98	10/01
DWG. BY: _____		10-98	03/04
DESIGN BY: _____		01/01	11/04
REVIEWED BY: _____			

20-NOV-2007 11:54
 \\DOT\DFSR00101\GROUPS-WZTCCC\designgroup4\resurfacing\resurfacing2007\div13\c20198l_i3cr105715etc_modison_us25etc\c20198l_i3cr105715etc_2wayundivurbfr-wysjuly2006.dgn
 pseymore AT WZTCCC