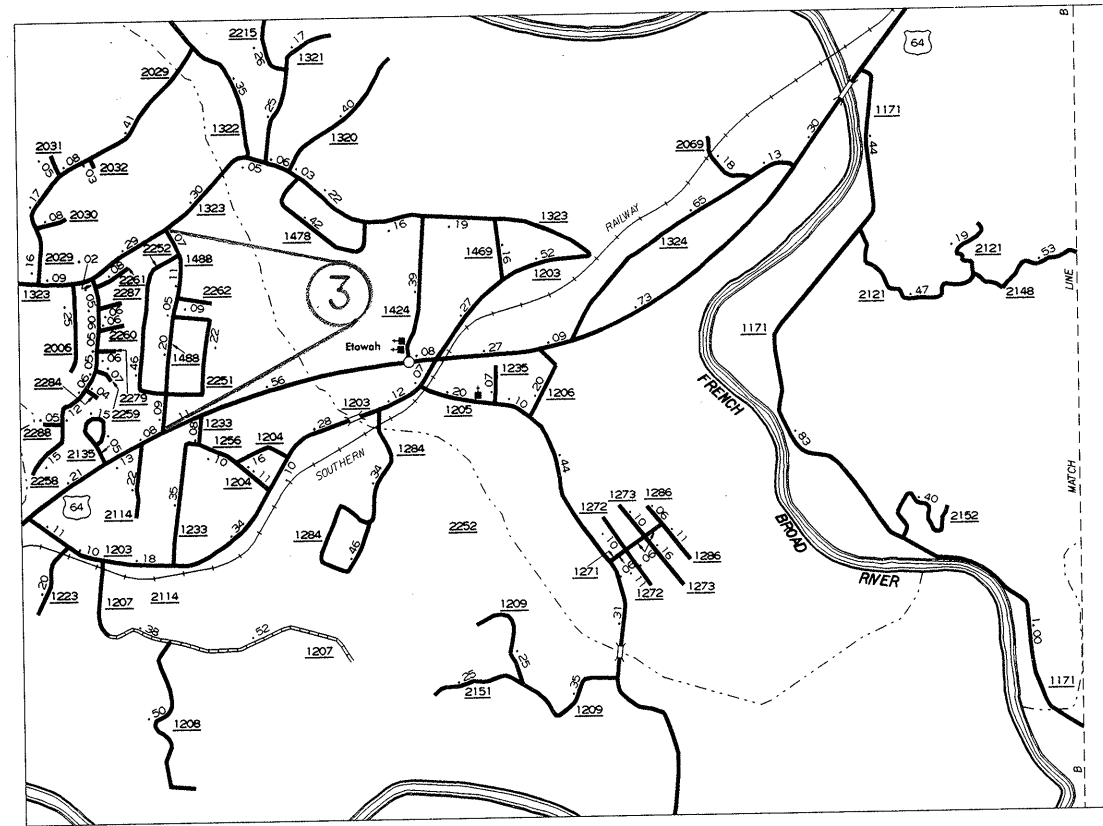


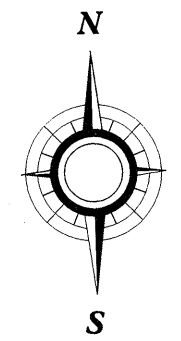
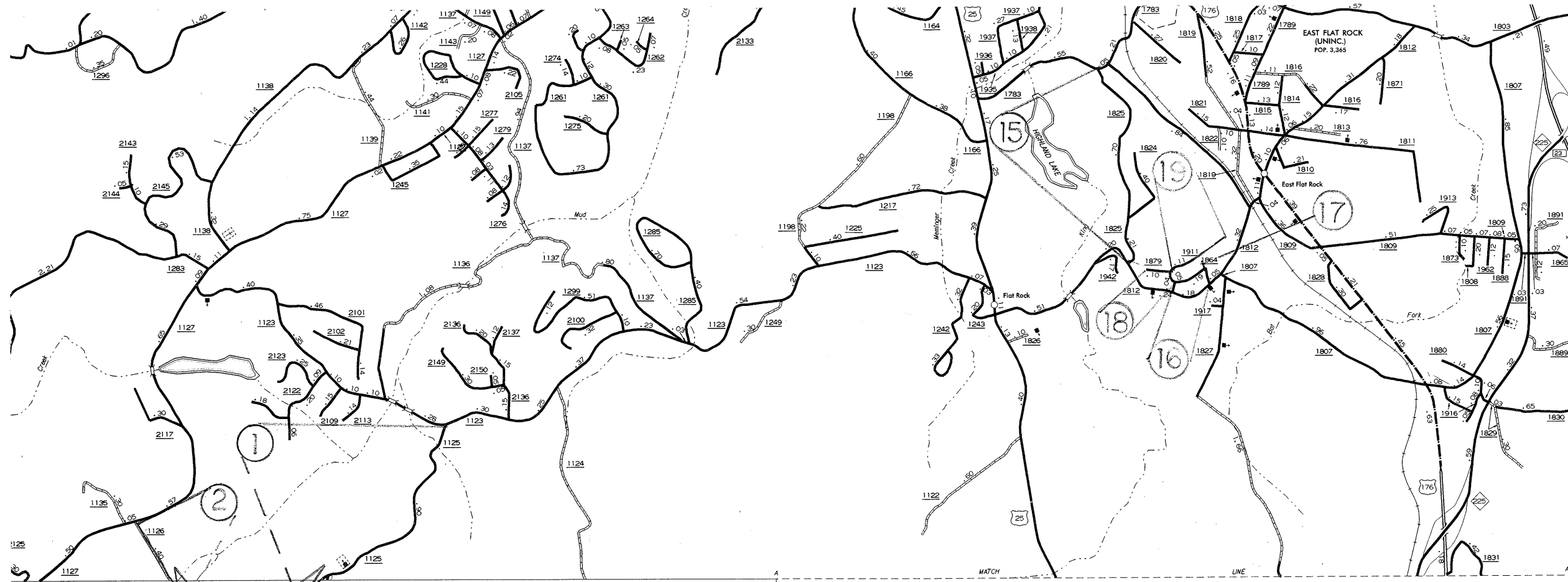
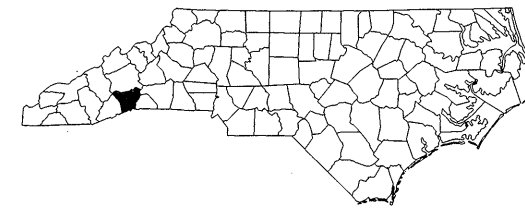
PROJECT REFERENCE NO.		SHEET NO.	
14CR.20451.7		1 of 7	
STATE PROJECT	F.A.PROJECT NO.	DESCRIPTION	
14CR.20451.7			

# HENDERSON COUNTY

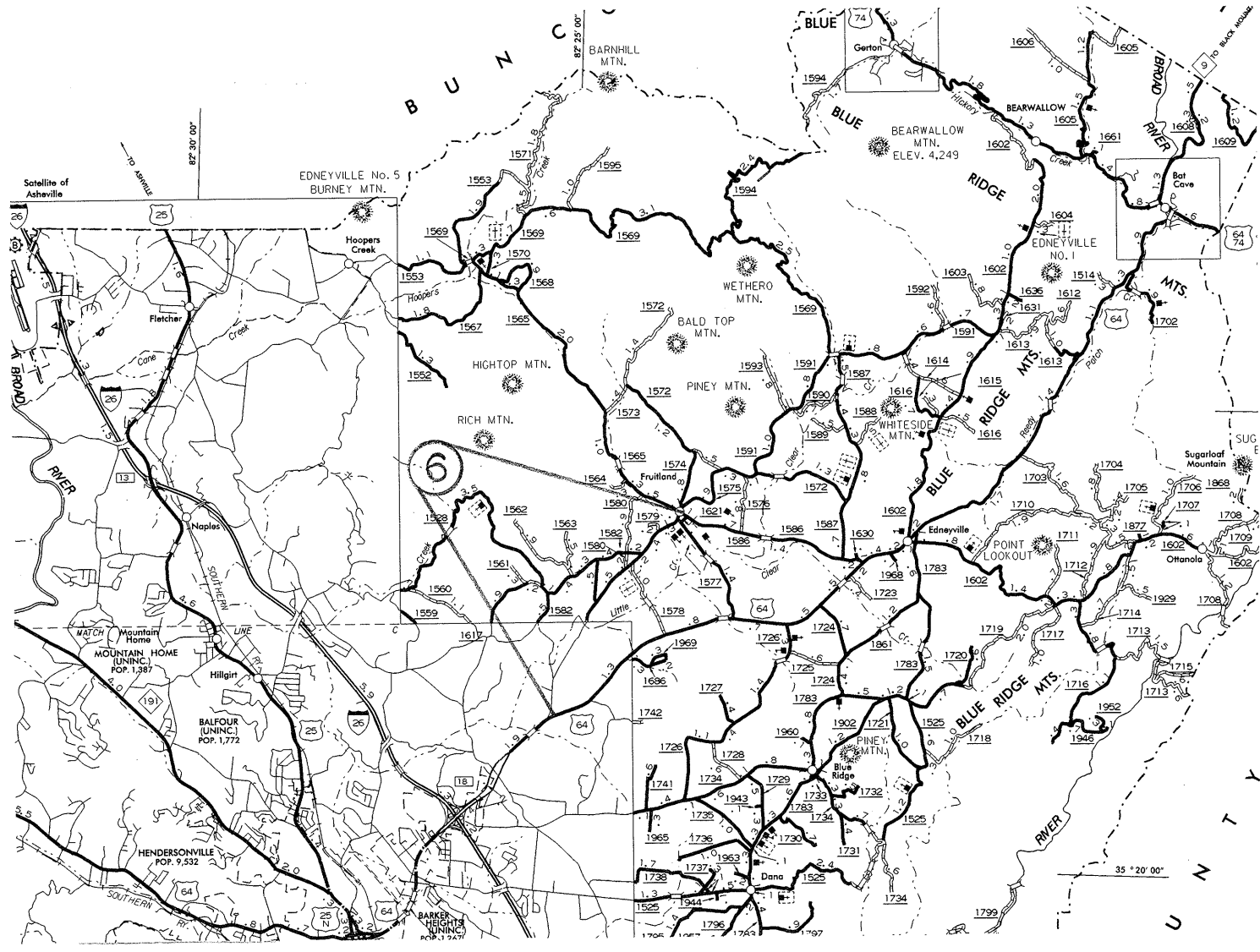
## NORTH CAROLINA



ETOWAH

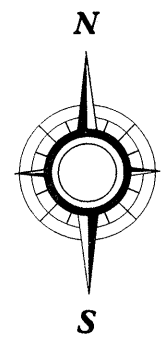
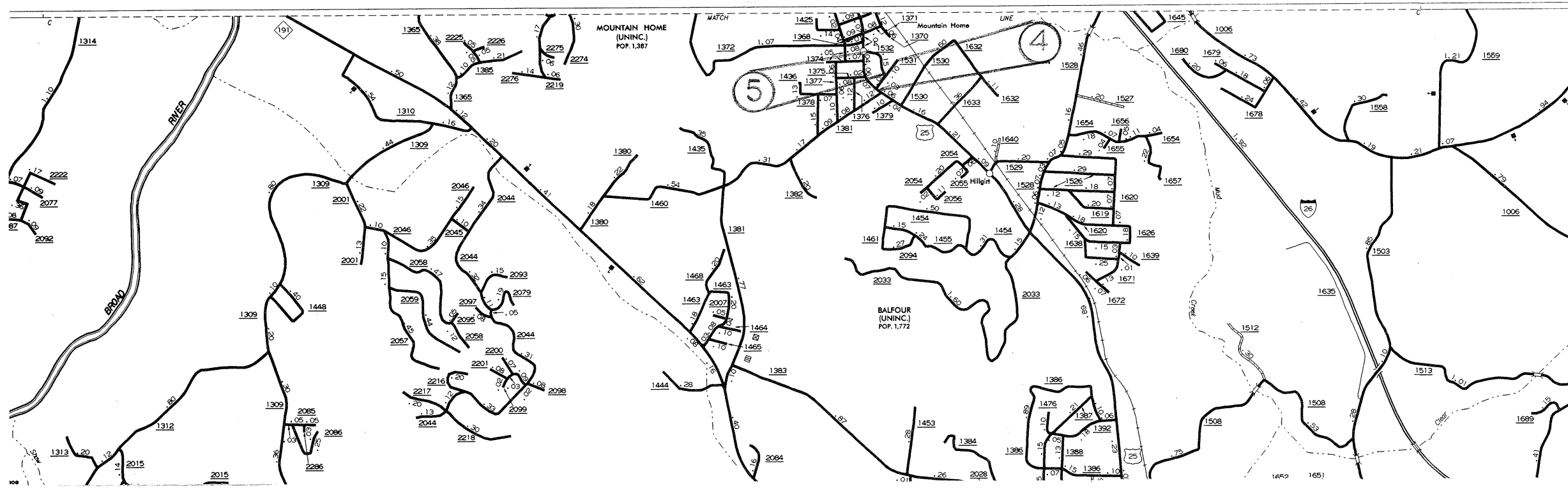


PROJECT REFERENCE NO.		SHEET NO.	
14CR.20451.7		2 of 7	
STATE PROJECT	F.A.PROJECT NO.	DESCRIPTION	
14CR.20451.7			



# HENDERSON COUNTY

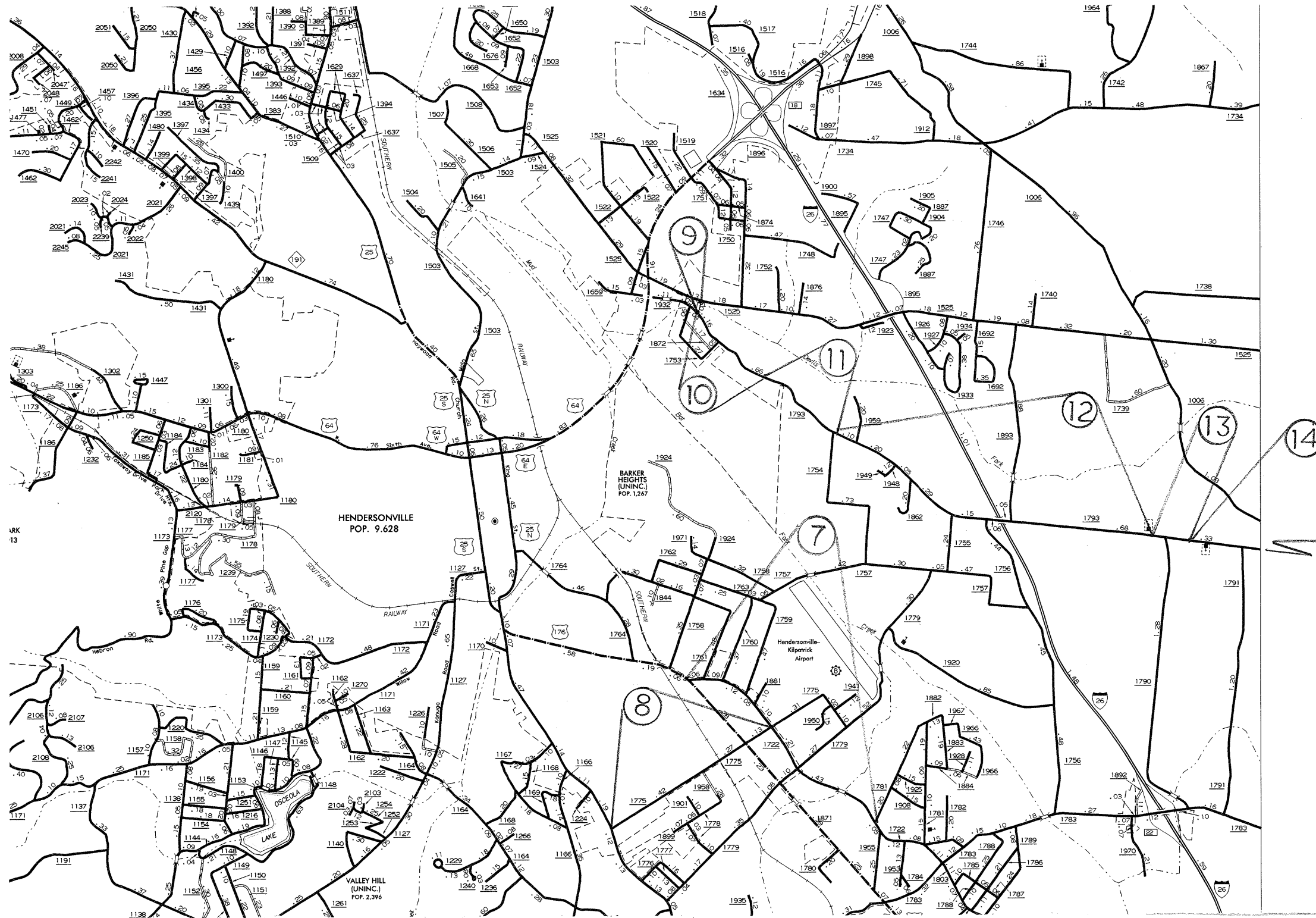
## NORTH CAROLINA



# HENDERSON COUNTY

## NORTH CAROLINA

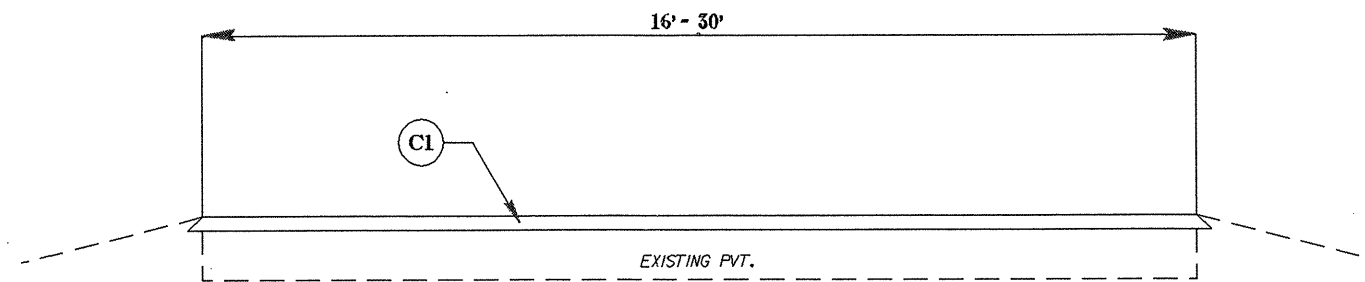
PROJECT REFERENCE NO.	SHEET NO.	
14CR.20451.7	3 of 7	
STATE PROJECT	F.A.PROJECT NO.	DESCRIPTION
14CR.20451.7		



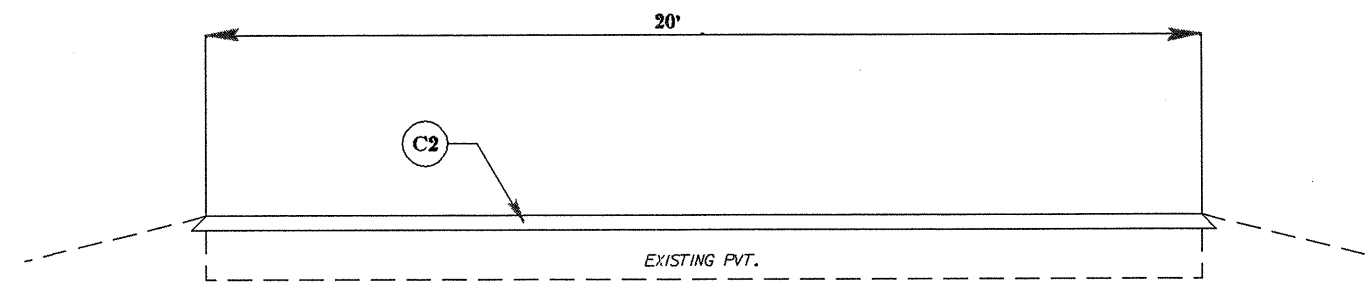
050197

PROJECT REFERENCE NO.	SHEET NO.
14CR.20451.7	4 OF 7

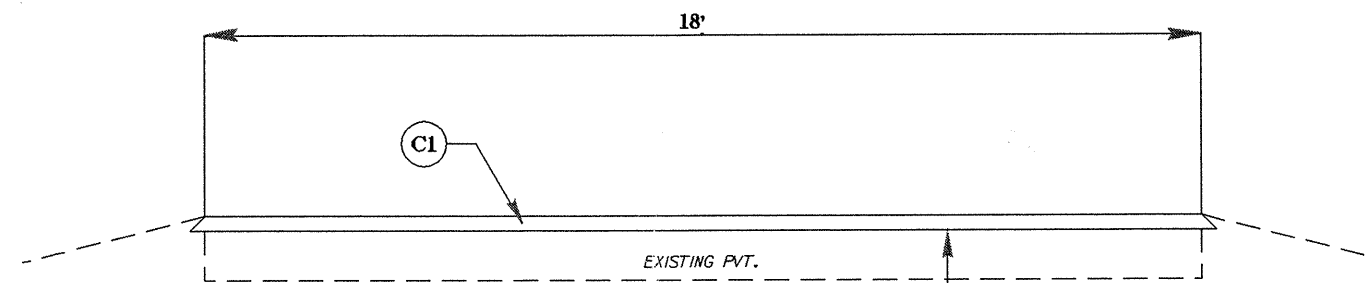
### TYPICAL 1



### TYPICAL 2



### TYPICAL 3



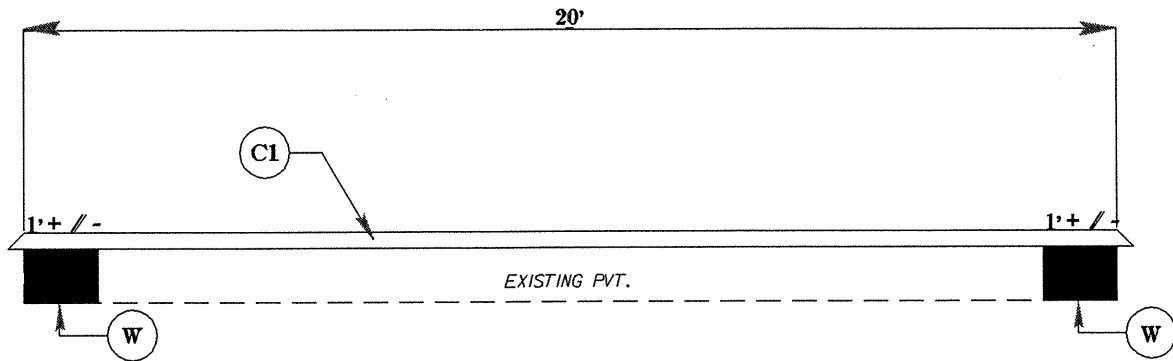
NOTE: WEDGING AT RXR CROSSING ONLY



050197

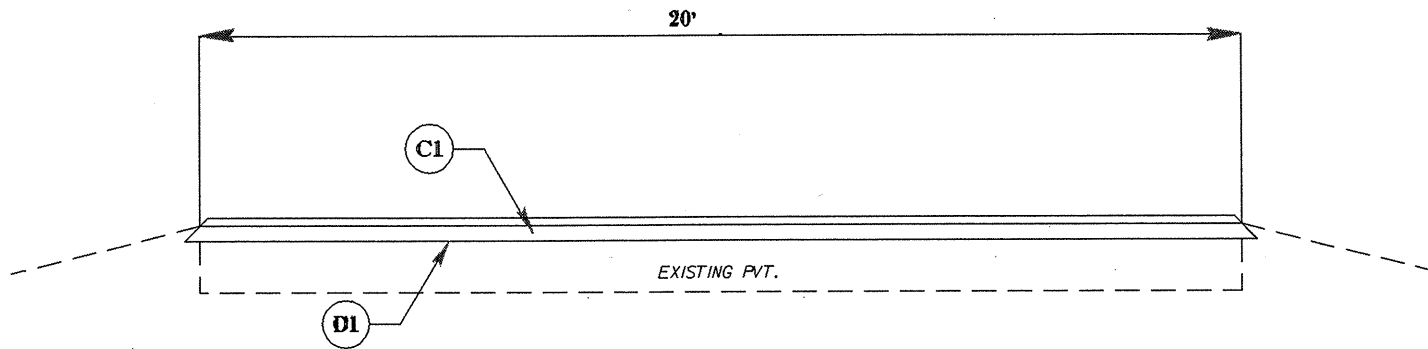
PROJECT REFERENCE NO.	SHEET NO.
14CR.20451.7	5 OF 7

# TYPICAL 4

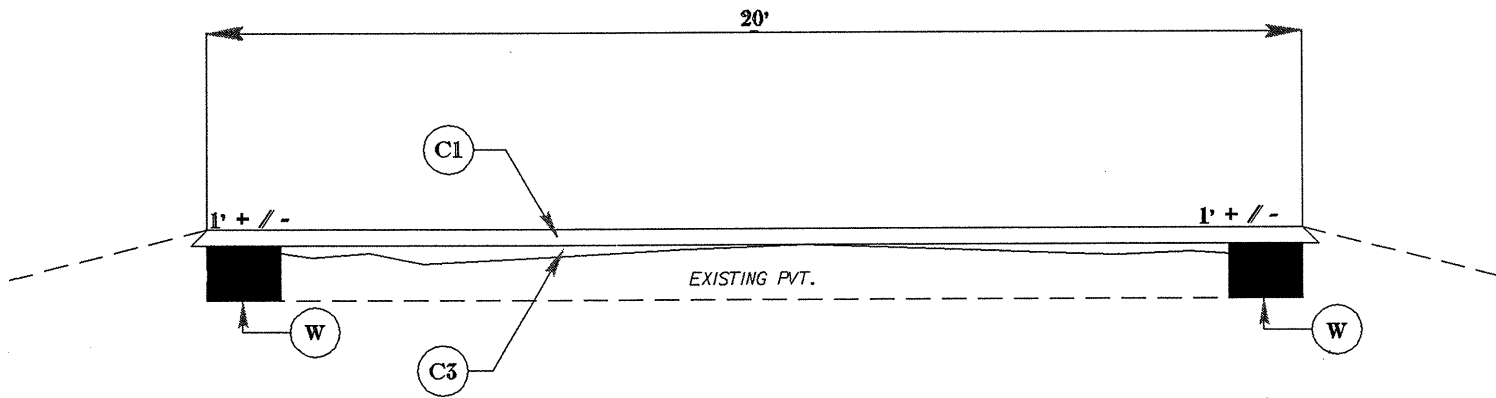


Note: See Special Provisions

# TYPICAL 5



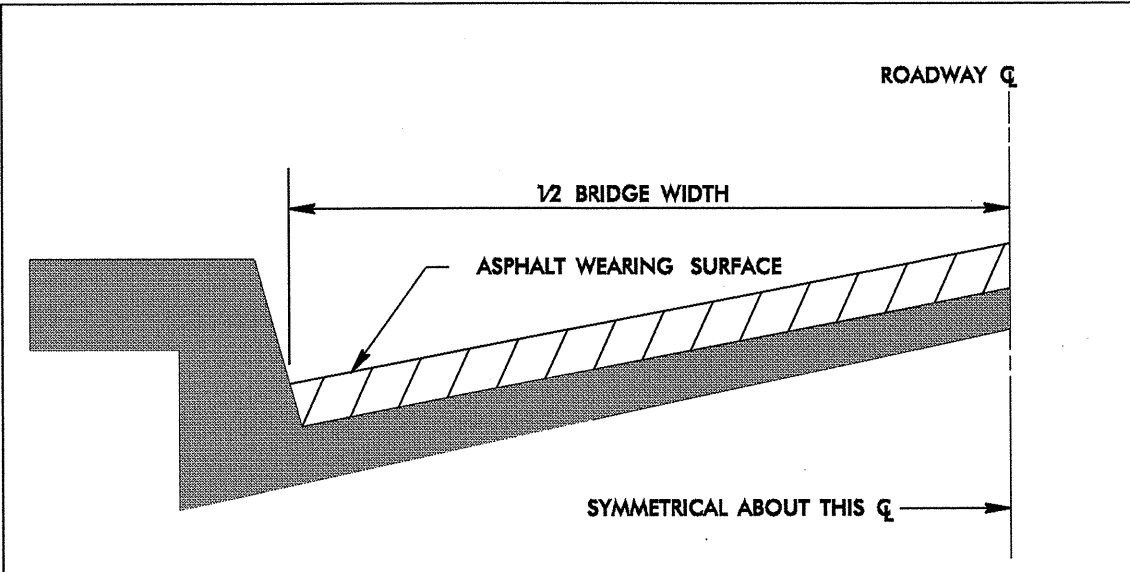
# TYPICAL 6



050197

**SURFACING SCHEDULE**

ITEM NO	DESCRIPTION
C1	ASPHALT CONCRETE SURFACE COURSE, TYPE S9.5B, AT AN AVERAGE RATE OF 168 LBS. PER SQ. YD. (1 1/2")
C2	ASPHALT CONCRETE SURFACE COURSE, TYPE S9.5B, AT AN AVERAGE RATE OF 224 LBS. PER SQ. YD. (2")
C3	PROPOSED VARIABLE DEPTH ASPHALT CONCRETE SURFACE COURSE, TYPE SF9.5A, AT AN AVERAGE RATE OF 70 LBS. PER SQ. YD. (LEVELING COURSE)
D1	ASPHALT CONCRETE INTERMEDIATE COURSE, TYPE I19.0B, AT AN AVERAGE RATE OF 285 LBS. PER SQ. YD. (2 1/2")
D2	PROPOSED VARIABLE DEPTH ASPHALT CONCRETE INTERMEDIATE COURSE, TYPE I19.0B (WEDGING) AT AN AVERAGE RATE OF 114 LBS. PER SQ. YD. PER 1" DEPTH. TO BE PLACED IN LAYERS NOT LESS THAN 2.5" IN DEPTH OR GREATER THAN 4" IN DEPTH.
W	ASPHALT CONCRETE BASE CSE., TYPE B25.0B, AT AN AVERAGE RATE OF 912 LBS. PER SQ. YD (8") (WIDENING - SEE SPECIAL PROVISIONS)



**BRIDGE HALF TYPICAL SECTION**

FOR BRIDGES WITH FLOOR DRAINS, CARE SHALL BE EXERCISED IN PLACING THE WEARING SURFACE AROUND FLOOR DRAINS SO AS NOT TO HINDER EFFECTIVE DRAINAGE. ALL DRAINS SHALL BE LEFT OPEN.

THE PROPOSED WEARING SURFACE SHALL VARY IN THICKNESS AS NECESSARY TO PROVIDE A SMOOTH RIDING SURFACE.

**NOTES**

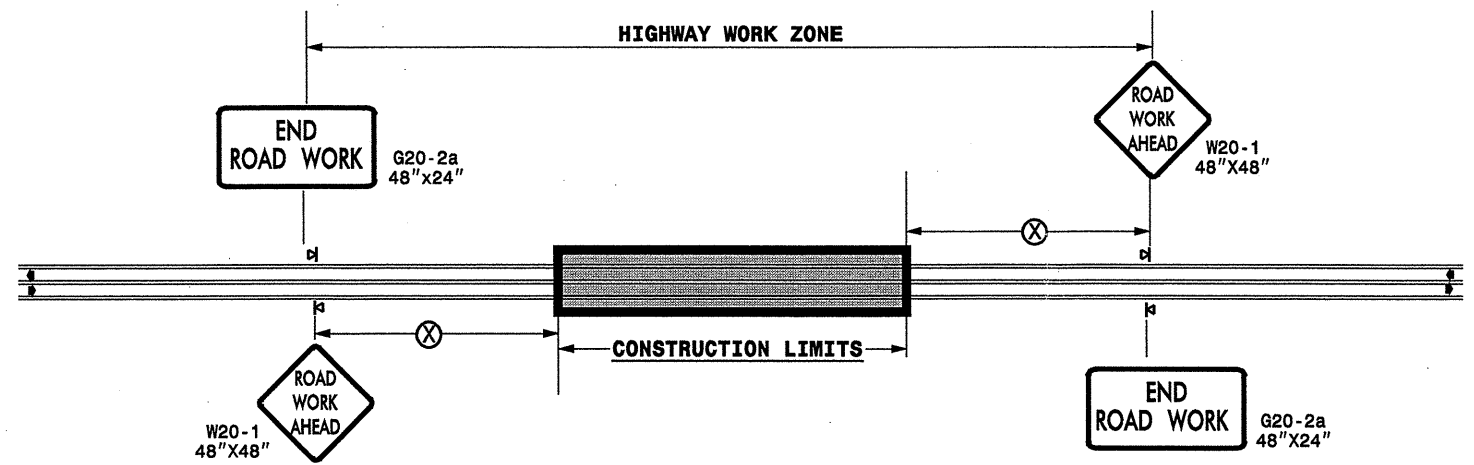
ALL UNPAVED S.R. ROADS TO BE RESURFACED 50' FROM EDGE OF PAVEMENT OF MAIN PROJECT.  
 ALL PAVED S.R. ROADS TO BE RESURFACED TO THE ENDS OF THE RADII, OR AS DIRECTED BY THE ENGINEER.  
 EDGES, PAVEMENT WIDENING, INTERSECTIONS AND BRIDGE FLARES ARE INCLUDED IN THE TABLE OF QUANTITIES.  
 SHOULDERS AND DITCHES ARE TO BE CONSTRUCTED BY OTHERS.  
 BRIDGES TO BE RESURFACED AT LOCATIONS AND TO DEPTH AS DIRECTED BY THE ENGINEER.

PROJECT NO.	SHEET NO.	TOTAL NO.
14CR.20451.7	7	7

## SUMMARY OF QUANTITIES

PROJECT NO	COUNTY	MAP NO	ROUTE	DESCRIPTION	TYP NO	LENGTH MI	WIDTH FT	BASE COURSE, B25.0B (Widening) TONS	INTERMEDIATE COURSE, I19.0B TONS	SURFACE COURSE, S9.5B TONS	SF9.5A LEVELING TON	PG 64-22 PLANT MIX TONS	ADJUST MANHOLES EA	ADJUST METER OR VALVE BOX EA
14CR.20451.7	Henderson	1	SR1125	FROM SR1123 TO SR1126	2	1.52	20			2,097		126		
		2	SR1126	FROM SR1125 TO SR1127	1	0.46	18			428		26		
		3	SR1488	FROM US64 TO SR1323	1	0.51	24			633		38		
		4	SR1531	FROM US25 TO DEAD END	1	0.11	16			91		5		1
		5	SR1532	FROM SR1531 TO US25	1	0.11	16			91		5		
		6	SR1574	FROM US64 TO SR1565	1	2.8	18			2,608		157		
		7	SR1722	FROM US176 TO SR1781	1	1.37	18			1,276		77	15	5
		8	SR1775	FROM US25 TO SR1722	3	0.81	18		76	754		49	12	5
		9	SR1793	FROM SR1525 TO MILE POST 0.04	1	0.04	30			62		4		
		10	SR1793	FROM MILE POST 0.04 TO MILE POST 0.61	6	0.57	20	320		590	246	65	2	
		11	SR1793	FROM MILE POST 0.61 TO MILE POST 0.88	5	0.27	20		474	279		39		
		12	SR1793	FROM MILE POST 0.88 TO MILE POST 2.38	4	1.5	20	843		1,552		129		
		13	SR1793	FROM MILE POST 2.38 TO MILE POST 2.52	5	0.14	20		246	145		20		
		14	SR1793	FROM MILE POST 2.52 TO MILE POST 3.07	4	0.55	20	309		569		47		
		15	SR1825	FROM SR1783 TO SR1812	1	0.91	20			942		57		
		16	SR1864	FROM SR1812 TO SR1812	1	0.25	26			336		20		
		17	SR1864	FROM SR1864 TO DEAD END	1	0.06	20			62		4		
		18	SR1879	FROM SR1864 TO DEAD END	1	0.16	26			215		13		1
		19	SR1911	FROM SR1879 TO DEAD END	1	0.21	26			283		17		1
<b>TOTAL FOR PROJ NO. 14CR.20451.7</b>						<b>12.35</b>		<b>1,472</b>	<b>796</b>	<b>13,013</b>	<b>246</b>	<b>898</b>	<b>29</b>	<b>13</b>
<b>GRAND TOTAL</b>						<b>12.35</b>		<b>1,472</b>	<b>796</b>	<b>13,013</b>	<b>246</b>	<b>898</b>	<b>29</b>	<b>13</b>

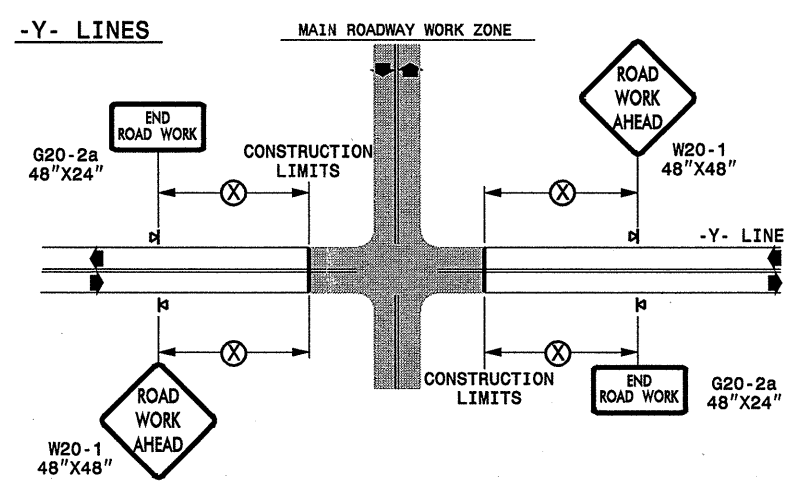
**TWO-WAY UNDIVIDED \*\* (L-LINES)**



POSTED SPEED LIMIT (M.P.H.)	RECOMMENDED MINIMUM SIGN SPACING
≤ 50	500'
≥ 55	1000'

STATE OF NORTH CAROLINA  
DEPT. OF TRANSPORTATION  
DIVISION OF HIGHWAYS  
RALEIGH, N.C.

**ROADWAYS INTERSECTING ALONG 2 WAY UNDIVIDED WORK ZONE (Y-LINES)**



**GENERAL NOTES**

- USE FLUORESCENT ORANGE SHEETING (TYPE VII OR HIGHER) ON ALL ADVANCED WORK ZONE SIGNS.
- DO NOT INSTALL ADVANCE WARNING SIGNS MORE THAN 3 DAYS PRIOR TO BEGINNING OF WORK.
- ALL SIGN SPACING DIMENSIONS ARE APPROXIMATE, FIELD ADJUST AS NECESSARY OR AS DIRECTED.
- USE PORTABLE WORK ZONE SIGNS ONLY WITH PORTABLE WORK ZONE SIGN STANDS SPECIFICALLY DESIGNED FOR ONE ANOTHER. PORTABLE WORK ZONE SIGNS MAY BE ROLL UP OR APPROVED COMPOSITE.
- PROVIDE PORTABLE WORK ZONE SIGN STANDS, PORTABLE SIGNS AND SIGN SHEETING WHICH ARE LISTED ON THE NORTH CAROLINA DEPARTMENT OF TRANSPORTATION'S APPROVED PRODUCT LIST OR ACCEPTED AS TRAFFIC QUALIFIED BY THE TRAFFIC CONTROL UNIT.
- \*\* TWO-WAY UNDIVIDED ADVANCE WARNING SIGN CONFIGURATION MAY BE USED ON URBAN MULTI-LANE FACILITIES WHERE CONDITIONS LIMIT THE USE OF DUAL MOUNTED SIGNS AS DETERMINED BY THE ENGINEER.

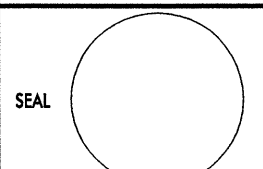

**LEGEND**

◀ PORTABLE SIGN

➡ DIRECTION OF TRAFFIC FLOW

DETAIL DRAWING  
FOR TWO-WAY UNDIVIDED  
WORK ZONE WARNING SIGNS

SHEET 1 OF 1

APPROVED: _____	DATE: _____	DETAIL DRAWING FOR TWO-WAY UNDIVIDED ADVANCED WORK ZONE WARNING SIGNS	
			
SCALE: NONE		REVISIONS	
DATE:		7-98	10/01
DWG. BY:		10-98	03/04
DESIGN BY:		01/01	11/04
REVIEWED BY:			

13-NOV-2007 15:40  
 \\DOT\DFSROOT\T\GROUPS\WZTCCC\designgroup4\resurfacing\resurfacing2007\div14\c201957\_14cr204517\_2wayundivurbfrwys\july2006.dgn  
 pseymore AT WZTCCC