

STATE OF NORTH CAROLINA
DIVISION OF HIGHWAYS

STATE PROJECT REFERENCE NO.	SHEET NO.
B - 4 1 0 4	TCP-1

**PLAN FOR PROPOSED
TRAFFIC CONTROL, MARKING & DELINEATION**

DAVIE COUNTY

B-4104

ROADWAY STANDARD DRAWINGS

THE FOLLOWING ROADWAY STANDARDS AS APPEAR IN "ROADWAY STANDARD DRAWINGS"-ROADWAY DESIGN UNIT-N.C. DEPARTMENT OF TRANSPORTATION-RALEIGH, N.C., DATED JULY 2006 ARE APPLICABLE TO THIS PROJECT AND BY REFERENCE HEREBY ARE CONSIDERED A PART OF THESE PLANS:

STD. NO.	TITLE
1101.02	TEMPORARY LANE CLOSURES
1101.03	TEMPORARY ROAD CLOSURES
1101.04	TEMPORARY SHOULDER CLOSURES
1101.05	WORK ZONE VEHICLE ACCESSES
1101.11	TRAFFIC CONTROL DESIGN TABLES
1110.01	STATIONARY WORK ZONE SIGNS
1110.02	PORTABLE WORK ZONE SIGNS
1130.01	DRUMS
1135.01	CONES
1145.01	BARRICADES
1150.01	FLAGGERS
1165.01	TRUCK MOUNTED IMPACT ATTENUATOR
1170.01	PORTABLE CONCRETE BARRIER
1130.01	SKINNY-DRUMS
1205.01	PAVEMENT MARKINGS - LINE TYPES & OFFSETS
1205.02	PAVEMENT MARKINGS - 2 LANE & MULTILANE ROADWAYS
1205.12	PAVEMENT MARKINGS - BRIDGES
1250.01	PAVEMENT MARKER SPACING
1251.01	RAISED PAVEMENT MARKERS (TEMPORARY & PERMANENT)
1261.01	GUARDRAIL & BARRIER DELINEATOR SPACING
1261.02	GUARDRAIL & BARRIER DELINEATOR TYPES
1262.01	GUARDRAIL END DELINEATION
1264.01	OBJECT MARKERS
1264.02	PLACEMENT OF OBJECT MARKERS

INDEX OF SHEETS

SHEET NO.	TITLE
TCP-1	LIST OF APPLICABLE ROADWAY STANDARD DRAWINGS, LEGEND, INDEX OF SHEETS AND TEMPORARY PAVEMENT MARKING SCHEDULE
TCP-2	PROJECT NOTES
TCP-3	PHASE I OVERVIEW AND PHASING
TCP-4 AND TCP-5	PHASE I DETAILS
TCP-6	PHASE II OVERVIEW AND PHASING
TCP-7	PHASE II DETAIL
TCP-8	DETAIL DRAWING FOR TWO-WAY UNDIVIDED AND URBAN FREEWAYS ADVANCE WORK ZONE WARNING SIGNS
PM-1	FINAL PAVEMENT MARKING SCHEDULE

LEGEND

- GENERAL**
- DIRECTION OF TRAFFIC FLOW
 - NORTH ARROW
 - PROPOSED PVMT. EXIST. PVMT.
 - PROPOSED CONSTRUCTION
 - REMOVAL OF EXISTING PAVEMENT AND BRIDGE

TRAFFIC CONTROL DEVICES

- TYPE I BARRICADE
- TYPE II BARRICADE
- TYPE III BARRICADE
- CONE
- DRUM
- FLASHING ARROW PANEL (TYPE C)
- TYPE 'B' WARNING LIGHT
- STATIONARY SIGN
- PORTABLE SIGN
- STATIONARY OR PORTABLE SIGN
- WARNING FLAGS
- CRASH CUSHION
- CHANGEABLE MESSAGE SIGN
- TRUCK MOUNTED IMPACT ATTENUATOR (TMIA)
- POLICE
- FLAGGER

PAVEMENT MARKINGS

- CRYSTAL/CRYSTAL PAVEMENT MARKER
- YELLOW/YELLOW PAVEMENT MARKER
- CRYSTAL/RED PAVEMENT MARKER
- PAVEMENT MARKING SYMBOLS

TEMP. PAV'T. MARKING SCHEDULE

SYMBOL	DESCRIPTION	QUANTITY BREAKDOWN	PAY ITEM	TOTAL QUANTITY
PAVEMENT MARKING LINES				
PA	WHITE EDGELINE 2X	8,100 LF	PAINT (4")	
PI	YELLOW DOUBLE CENTER LINE 2X	10,800 LF		
TOTAL				18,900 LF
PAVEMENT MARKERS				
MH	YELLOW & YELLOW	68 EA	TEMPORARY RAISED	
TOTAL				68 EA

NOTE: FOR EACH PAINT PAVEMENT MARKING ITEM, 1X IMPLIES A SINGLE APPLICATION, 2X IMPLIES TWO APPLICATIONS, AND 3X IMPLIES THREE APPLICATIONS.

TIP PROJECT:

9/17/2007 P:\TIP\Group45\B4104.ko\B4104_TrafficControl\TCP\002\B4104_TC_Tcp1_H1e.dgn KO & Associates, P.C.

PLAN REVIEWED BY: N.C.D.O.T. WORK ZONE TRAFFIC CONTROL UNIT J. S. BOURNE, P.E. WORK ZONE TRAFFIC CONTROL ENGINEER G. L. GETTIER, PE TRAFFIC CONTROL PROJECT ENGINEER J. W. WOOLARD, PE TRAFFIC CONTROL PROJ. DESIGN ENGINEER TRAFFIC CONTROL DESIGN ENGINEER TRAFFIC CONTROL DESIGN TECHNICIAN	APPROVED: <i>M. T. Rzepka</i> DATE: 9-19-07 SEAL 	PLAN PREPARED FOR N.C.D.O.T. BY: M. T. RZEPKA, P.E. PROJECT ENGINEER B. L. MARIOTTE DESIGN ENGINEER B. L. MARIOTTE DESIGN TECHNICIAN
---	--	---

PROJECT NOTES

GENERAL NOTES

CHANGES MAY BE REQUIRED WHEN PHYSICAL DIMENSIONS IN THE DETAIL DRAWINGS, STANDARD DETAILS AND ROADWAY DETAILS ARE NOT ATTAINABLE TO MEET FIELD CONDITIONS OR RESULT IN DUPLICATE, OR UNDESIRE OVERLAPPING OF DEVICES. MODIFICATION MAY INCLUDE: MOVING, SUPPLEMENTING, COVERING OR REMOVAL OF DEVICES, AS DIRECTED BY THE ENGINEER.

THE FOLLOWING GENERAL NOTES APPLY AT ALL TIMES FOR THE DURATION OF THE CONSTRUCTION PROJECT, EXCEPT WHEN OTHERWISE NOTED IN THE PLAN, OR DIRECTED BY THE ENGINEER.

LANE AND SHOULDER CLOSURE REQUIREMENTS

- A) REMOVE LANE CLOSURE DEVICES FROM THE LANE WHEN WORK IS NOT BEING PERFORMED BEHIND THE LANE CLOSURE OR WHEN A LANE CLOSURE IS NO LONGER NEEDED, OR AS DIRECTED BY THE ENGINEER.
- B) WHEN PERSONNEL AND/OR EQUIPMENT ARE WORKING WITHIN 15 FT OF AN OPEN TRAVEL LANE, CLOSE THE NEAREST OPEN SHOULDER USING ROADWAY STANDARD DRAWING NO. 1101.04 UNLESS THE WORK AREA IS PROTECTED BY BARRIER OR GUARDRAIL OR A LANE CLOSURE IS INSTALLED.
- C) WHEN PERSONNEL AND/OR EQUIPMENT ARE WORKING ON THE SHOULDER ADJACENT TO AN UNDIVIDED FACILITY AND WITHIN 5 FT OF AN OPEN TRAVEL LANE, CLOSE THE NEAREST OPEN TRAVEL LANE USING ROADWAY STANDARD DRAWING NO. 1101.02 UNLESS THE WORK AREA IS PROTECTED BY BARRIER OR GUARDRAIL.
- D) WHEN PERSONNEL AND/OR EQUIPMENT ARE WORKING WITHIN A LANE OF TRAVEL OF AN UNDIVIDED OR DIVIDED FACILITY, CLOSE THE LANE ACCORDING TO THE TRAFFIC CONTROL PLANS, ROADWAY STANDARD DRAWINGS OR AS DIRECTED BY THE ENGINEER. CONDUCT THE WORK SO THAT ALL PERSONNEL AND/OR EQUIPMENT REMAIN WITHIN THE CLOSED TRAVEL LANE.
- E) DO NOT WORK SIMULTANEOUSLY WITHIN 15 FT ON BOTH SIDES OF AN OPEN TRAVELWAY, RAMP OR LOOP WITHIN THE SAME LOCATION UNLESS PROTECTED WITH GUARDRAIL OR BARRIER.
- F) DO NOT INSTALL MORE THAN ONE LANE CLOSURE, IN ANY ONE DIRECTION, ON NC 801.

PAVEMENT EDGE DROP OFF REQUIREMENTS

- G) BACKFILL AT A 6:1 SLOPE UP TO THE EDGE AND ELEVATION OF EXISTING PAVEMENT IN AREAS ADJACENT TO AN OPENED TRAVEL LANE THAT HAS AN EDGE OF PAVEMENT DROP-OFF AS FOLLOWS:

 BACKFILL DROP-OFFS THAT EXCEED 2 INCHES ON ROADWAYS WITH POSTED SPEED LIMITS OF 45 MPH OR GREATER.

 BACKFILL WITH SUITABLE COMPACTED MATERIAL, AS APPROVED BY THE ENGINEER, AT NO EXPENSE TO THE DEPARTMENT.
- H) DO NOT EXCEED A DIFFERENCE OF 2 INCHES IN ELEVATION BETWEEN OPEN LANES OF TRAFFIC FOR NOMINAL LIFTS OF 1.5 INCHES. INSTALL ADVANCE WARNING "UNEVEN LANES" SIGNS (W8-11) 500 FT IN ADVANCE AND A MINIMUM OF EVERY HALF MILE THROUGHOUT THE UNEVEN AREA

TRAFFIC PATTERN ALTERATIONS

- I) NOTIFY THE ENGINEER TWENTY ONE (21) CALENDAR DAYS PRIOR TO ANY TRAFFIC PATTERN ALTERATION.

SIGNING

- J) INSTALL ADVANCE WORK ZONE WARNING SIGNS WHEN WORK IS WITHIN 40 FT FROM THE EDGE OF TRAVEL LANE AND NO MORE THAN THREE (3) DAYS PRIOR TO THE BEGINNING OF CONSTRUCTION.
- K) PROVIDE PERMANENT SIGNING.
- L) ENSURE ALL NECESSARY SIGNING IS IN PLACE PRIOR TO ALTERING ANY TRAFFIC PATTERN.

TRAFFIC BARRIER

- M) INSTALL TEMPORARY BARRIER ACCORDING TO THE TRAFFIC CONTROL PLANS A MAXIMUM OF TWO (2) WEEKS PRIOR TO BEGINNING WORK IN ANY LOCATION. ONCE TEMPORARY BARRIER IS INSTALLED AT ANY LOCATION, PROCEED IN A CONTINUOUS MANNER TO COMPLETE THE PROPOSED WORK IN THAT LOCATION UNLESS OTHERWISE STATED IN THE TRAFFIC CONTROL PLANS OR AS DIRECTED BY THE ENGINEER.

DO NOT PLACE BARRIER DIRECTLY ON ANY SURFACE OTHER THAN ASPHALT OR CONCRETE.

ONCE TEMPORARY BARRIER IS INSTALLED AT ANY LOCATION AND NO WORK IS PERFORMED BEHIND THE TEMPORARY BARRIER FOR A PERIOD LONGER THAN TWO (2) MONTHS, REMOVE/RESET TEMPORARY BARRIER AT NO COST TO THE DEPARTMENT UNLESS OTHERWISE STATED IN THE TRAFFIC CONTROL PLANS, TEMPORARY BARRIER IS PROTECTING A HAZARD, OR AS DIRECTED BY THE ENGINEER.

INSTALL TEMPORARY BARRIER WITH THE TRAFFIC FLOW, BEGINNING WITH THE UPSTREAM SIDE OF TRAFFIC. REMOVE TEMPORARY BARRIER AGAINST THE TRAFFIC FLOW, BEGINNING WITH THE DOWNSTREAM SIDE OF TRAFFIC.

INSTALL AND SPACE DRUMS NO GRATER THAN TWICE THE POSTED SPEED LIMIT (MPH) TO CLOSE OR KEEP THE SECTION OF THE ROADWAY CLOSED UNTIL THE TEMPORARY BARRIER CAN BE PLACED OR AFTER THE TEMPORARY BARRIER IS REMOVED.

- N) PROTECT THE APPROACH END OF MOVABLE/PORTABLE CONCRETE BARRIER AT ALL TIMES DURING THE INSTALLATION AND REMOVAL OF THE BARRIER BY EITHER A TRUCK MOUNTED IMPACT ATTENUATOR (MAXIMUM 72 HOURS) OR A TEMPORARY CRASH CUSHION.

PROTECT THE APPROACH END OF MOVABLE/PORTABLE CONCRETE BARRIER FROM ONCOMING TRAFFIC AT ALL TIMES BY A TEMPORARY CRASH CUSHION UNLESS THE APPROACH END OF MOVABLE/PORTABLE CONCRETE BARRIERS OFFSET FROM ONCOMING TRAFFIC AS FOLLOWS OR AS SHOWN IN THE PLANS:

POSTED SPEED LIMIT	MINIMUM OFFSET
40 OR LESS	15 FT
45 - 50 MPH	20 FT
55	25 FT
60 MPH OR HIGHER	30 FT

TRAFFIC CONTROL DEVICES

- O) SPACE CHANNELIZING DEVICES IN WORK AREAS NO GREATER THAN TWICE THE POSTED SPEED LIMIT (MPH), EXCEPT 10 FT ON-CENTER IN RADII, AND 3 FT OFF THE EDGE OF AN OPEN TRAVELWAY, WHEN LANE CLOSURES ARE NOT IN EFFECT. WHEN SKINNY DRUMS ARE ALLOWED, REFER TO SECTION 1180 OF STANDARD SPECIFICATIONS FOR ROADS AND STRUCTURES OR AS SHOWN IN THE PLANS.
- P) PLACE TYPE III BARRICADES, WITH "ROAD CLOSED" SIGN R11-2 ATTACHED, OF SUFFICIENT LENGTH TO CLOSE ENTIRE ROADWAY.
- Q) PLACE ADDITIONAL SETA OF THREE CHANNELIZING DEVICES PERPENDICULAR TO THE EDGE OF TRAVELWAY ON 500 FT CENTERS WHEN UNOPENED LANES ARE CLOSED TO TRAFFIC.

PAVEMENT MARKINGS AND MARKERS

- R) INSTALL PAVEMENT MARKINGS AND PAVEMENT MARKERS ON THE FINAL SURFACE AS FOLLOWS:

	ROAD NAME	MARKING	MARKER
1.	NC 801	POLYUREA	PERMANENT RAISED

- S) INSTALL TEMPORARY PAVEMENT MARKINGS AND TEMPORARY PAVEMENT MARKERS ON INTERIM LAYERS OF PAVEMENT AS FOLLOWS:

	ROAD NAME	MARKING	MARKER
1.	NC 801	PAINT	TEMPORARY RAISED

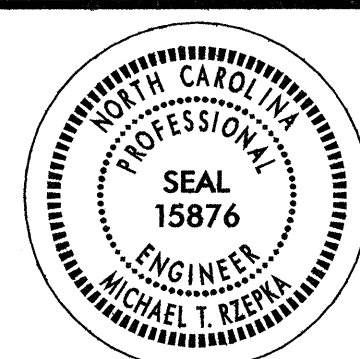

- T) PLACE ONE APPLICATION OF PAINT FOR TEMPORARY TRAFFIC PATTERNS. PLACE A SECOND APPLICATION OF PAINT SIX (6) MONTHS AFTER THE INITIAL APPLICATION AND EVER SIX MONTHS AS DIRECTED BY THE ENGINEER.

- U) TIE PROPOSED PAVEMENT MARKING LINES TO EXISTING PAVEMENT MARKING LINES.

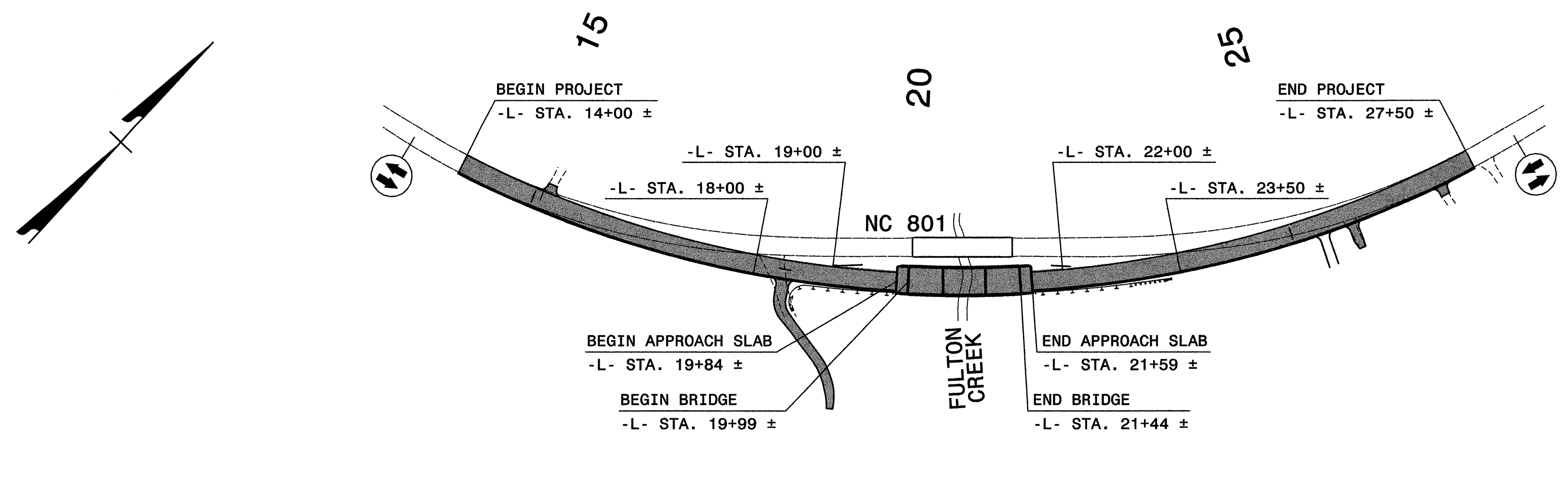
- V) REMOVE/REPLACE ANY CONFLICTING/DAMAGED PAVEMENT MARKINGS AND MARKERS BY THE END OF EACH DAY'S OPERATION.

MISCELLANEOUS

- W) MAINTAIN ACCESS TO DRIVEWAYS AT ALL TIMES.

APPROVED: <i>Michael T. Klep</i> DATE: 9-25-07		PROJECT NOTES	
SEAL 	SCALE: NONE		REVISIONS
	DATE: 9-07		
	DWG. BY: BLM		
	DESIGN BY: BLM		
REVIEWED BY: MTR			

9/25/2007
 P:\Traffic\Group45\B4104.ko\B4104\Traffic\TrafficControl\TCP\100%\B4104_TC_Tcp2_notes.dgn
 KO & Associates, P.C.



PHASE I

STEP 1: - INSTALL WORK ZONE WARNING SIGNS (SEE SHEET TCP-8).

STEP 2: - WITHOUT ENCRONCHING ON EXISTING NC 801 PAVEMENT, BEGIN CONSTRUCTION OF PROPOSED -L- FROM -L- STA. 14+00 ± TO -L- STA. 27+50 ± (REFER TO ROADWAY STANDARD DRAWING NUMBER 1101.02, SHEET 1 OF 9).

COMPLETE THE FOLLOWING WORK IN PHASE I STEPS 3 THRU 5 USING ROADWAY STANDARD DRAWING NUMBER 1101.02, SHEET 1 OF 9.

STEP 3: - WORKING IN A CONTINUOUS MANNER, REMOVE EXISTING EASTBOUND EDGELINE AND YELLOW DOUBLE CENTERLINE FROM -L- STA. 14+00 ± TO -L- STA. 27+50 ±. PLACE TEMPORARY PAVEMENT MARKINGS (PAINT) AND MARKERS (TEMPORARY RAISED) IN TEMPORARY PATTERN FROM -L- STA. 14+00 ± TO -L- STA. 27+50 ± AND PLACE TRAFFIC IN TEMPORARY TWO-LANE TWO-WAY PATTERN (SEE SHEET TCP-4 AND SECTION A-A).

STEP 4: - BEGIN CONSTRUCTION OF PROPOSED BRIDGE FROM -L- STA. 19+84 ± TO -L- STA. 21+59 ±, (SEE SHEET TCP-4 AND STRUCTURE PLANS).

- BEGIN CONSTRUCTION OF PROPOSED -L- UP TO BUT NOT INCLUDING THE FINAL LAYER OF SURFACE COURSE, EXCLUDING GUARDRAILS LEFT OF -L- AT THE FOLLOWING LOCATIONS (SEE SHEET TCP-4 AND ROADWAY PLANS):

-L- STA. 19+00 ± TO -L- STA. 19+84 ±
 -L- STA. 21+59 ± TO -L- STA. 22+00 ±

STEP 5: - BEGIN CONSTRUCTION OF PROPOSED -L- UP TO BUT NOT INCLUDING THE FINAL LAYER OF SURFACE COURSE, EXCLUDING PAVED SHOULDERS AND GUARDRAILS LEFT OF -L- AT THE FOLLOWING LOCATIONS (SEE SHEET TCP-4, SECTION A-A AND ROADWAY PLANS):

-L- STA. 18+00 ± TO -L- STA. 19+00 ±
 -L- STA. 22+00 ± TO -L- STA. 23+50 ±

- BEGIN CONSTRUCTION OF PROPOSED -L-, INCLUDING PROPOSED DRIVEWAYS, UP TO THE EXISTING EDGE AND ELEVATION ON NC 801, AT THE FOLLOWING LOCATIONS (SEE SHEET TCP-4 AND ROADWAY PLANS):

-L- STA. 14+00 ± TO -L- STA. 18+00 ±
 -L- STA. 23+50 ± TO -L- STA. 27+50 ±

COMPLETE THE FOLLOWING WORK IN PHASE I STEPS 8 AND 9 USING ROADWAY STANDARD DRAWING NUMBER 1101.04, SHEET 1 OF 1.

STEP 8: - COMPLETE CONSTRUCTION OF PROPOSED BRIDGE FROM -L- STA. 19+84 ± TO -L- STA. 21+59 ± (SEE SHEET TCP-4 AND STRUCTURE PLANS).

- COMPLETE CONSTRUCTION OF PROPOSED -L- UP TO BUT NOT INCLUDING THE FINAL LAYER OF SURFACE COURSE FROM -L- STA. 14+00 ± TO -L- STA. 27+50 ±, EXCLUDING SHOULDERS AND GUARDRAILS LEFT OF -L- AT THE FOLLOWING LOCATIONS (SEE SHEET TCP-4 AND ROADWAY PLANS):

-L- STA. 14+00 ± TO -L- STA. 18+00 ±
 -L- STA. 23+50 ± TO -L- STA. 27+50 ±

WORKING IN A CONTINUOUS MANNER, COMPLETE THE FOLLOWING WORK IN PHASE 1, STEPS 9 THRU 12 USING ROADWAY STANDARD DRAWING NUMBER 1101.02, SHEET 1 OF 9.

STEP 9: - PLACE PORTABLE CONCRETE BARRIER LEFT OF PROPOSED -L- FROM -L- STA. 18+75 ± TO -L- STA. 22+75 ± (SEE SHEET TCP-5 AND SECTION B-B). PROTECT BOTH ENDS OF PORTABLE CONCRETE BARRIER WITH TEMPORARY CRASH CUSHIONS.

STEP 10: - PLACE TRAFFIC IN A ONE-LANE TWO-WAY PATTERN IN THE EXISTING WESTBOUND LANE OF NC 801. PAVE / WEDGE THE PROPOSED EASTBOUND LANE OF PROPOSED -L- UP TO BUT NOT INCLUDING THE FINAL LAYER OF SURFACE COURSE, AT THE FOLLOWING LOCATIONS (SEE ROADWAY PLANS):

-L- STA. 14+00 ± TO -L- STA. 18+00 ±
 -L- STA. 23+50 ± TO -L- STA. 27+50 ±

- PLACE WHITE EDGELINE AND YELLOW DOUBLE CENTERLINE (PAINT) AND MARKERS (TEMPORARY RAISED) ON PROPOSED EASTBOUND LANE FROM -L- STA. 14+00 ± TO -L- STA. 27+50 ± (SEE SHEET TCP-5 AND SECTION B-B).

STEP 11: - PLACE TRAFFIC IN A ONE-LANE TWO-WAY PATTERN IN THE PROPOSED EASTBOUND LANE. PAVE / WEDGE THE PROPOSED WESTBOUND LANE UP TO BUT NOT INCLUDING THE FINAL LAYER OF SURFACE COURSE, AT THE FOLLOWING LOCATIONS (SEE ROADWAY PLANS):

-L- STA. 14+00 ± TO -L- STA. 18+00 ±
 -L- STA. 23+50 ± TO -L- STA. 27+50 ±

- PLACE WHITE EDGE LINE (PAINT) ON PROPOSED WESTBOUND LANE FROM -L- STA. 14+00 ± TO -L- STA. 27+50 ±.

STEP 12: - EXTEND PORTABLE CONCRETE BARRIER AT THE FOLLOWING LOCATIONS, KEEPING EXPOSED ENDS OF BARRIER PROTECTED BY TRUCK MOUNTED IMPACT ATTENUATORS (SEE SHEET TCP-5 AND SECTION B-B):

-L- STA. 17+00 ± TO -L- STA. 18+75 ±
 -L- STA. 22+75 ± TO -L- STA. 24+53 ±

- PLACE TRAFFIC IN TEMPORARY TWO-LANE TWO-WAY PATTERN (SEE SHEET TCP-5 AND SECTION B-B).

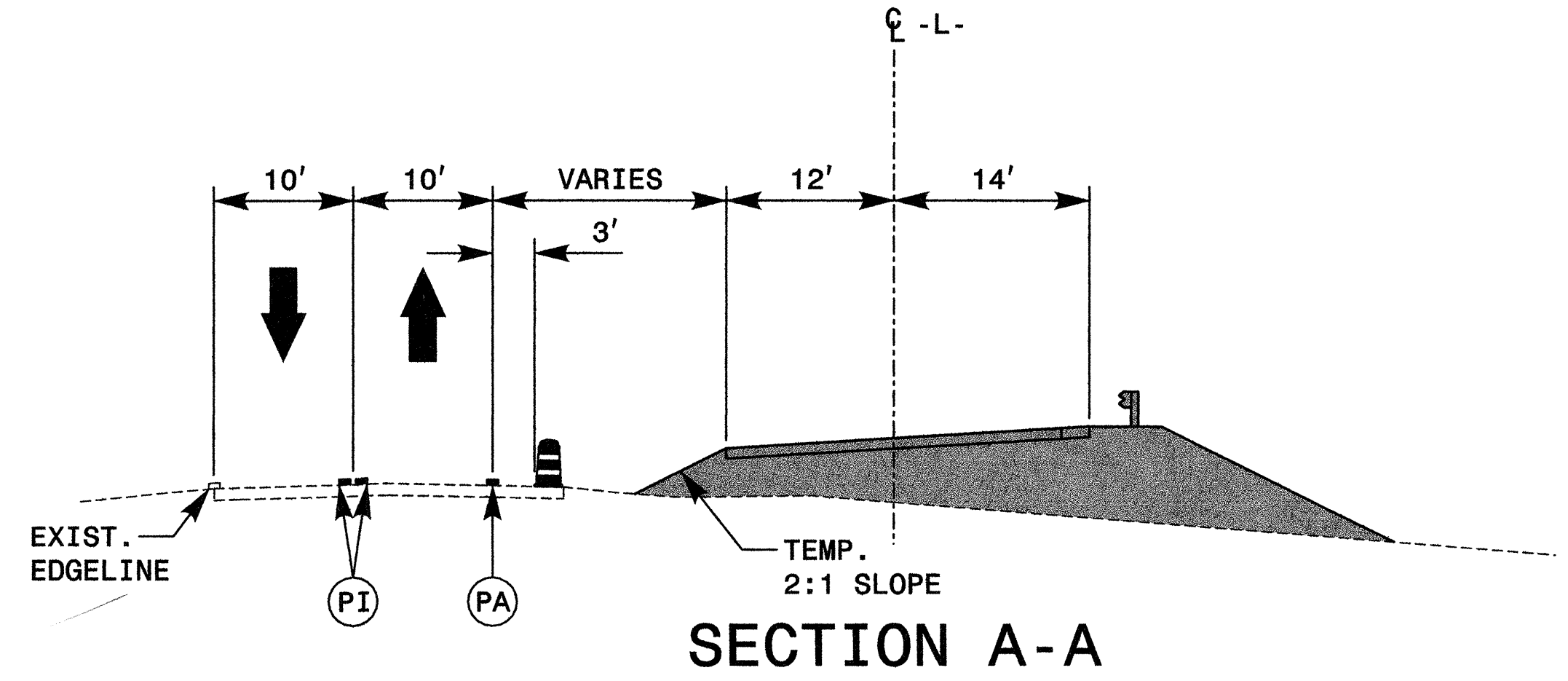
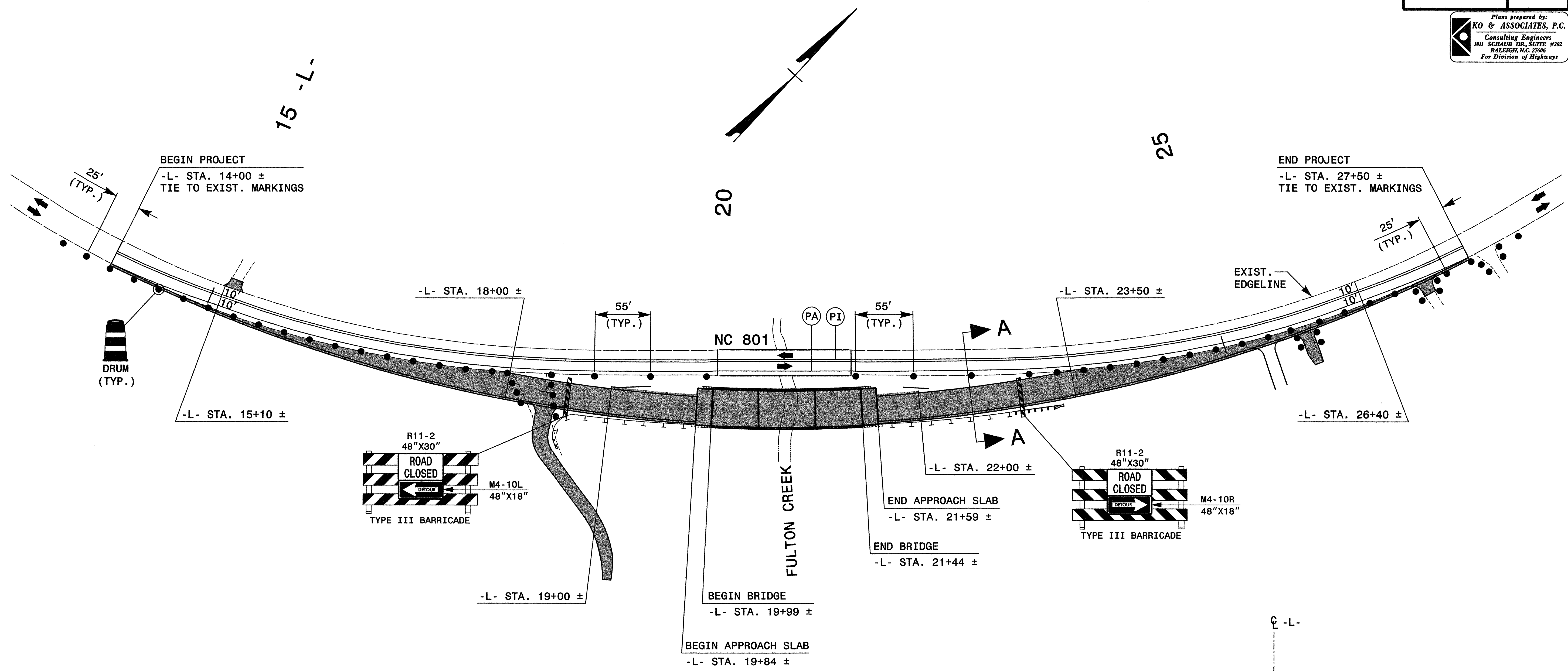
LEGEND

PROPOSED CONSTRUCTION

APPROVED: <i>M. K. ...</i> DATE: 9-19-07	PHASE I OVERVIEW AND PHASING	
SCALE: NONE		REVISIONS
DATE: 9-07		
DWG. BY: BLM		
DESIGN BY: BLM		
REVIEWED BY: MTR		CADD FILE

9/17/2007
 K:\TIP\Group45\B4104_Ko\B4104_Traffic\Traffic\Traffic\002\B4104_TC_Top3.phov.dgn
 KO & ASSOCIATES, P.C.

Plans prepared by:
KO & ASSOCIATES, P.C.
 Consulting Engineers
 101 SCHAUB DR., SUITE #202
 RALEIGH, N.C. 27606
 For Division of Highways



9/17/2007
 K:\p\Group45\B4104_ko\B4104_TrafficControl\TCP\004\B4104_TC_Top4_phidetis.dgn
 KO & Associates, P.C.

LEGEND

PROPOSED CONSTRUCTION

APPROVED: *mellor* DATE: 9-19-07

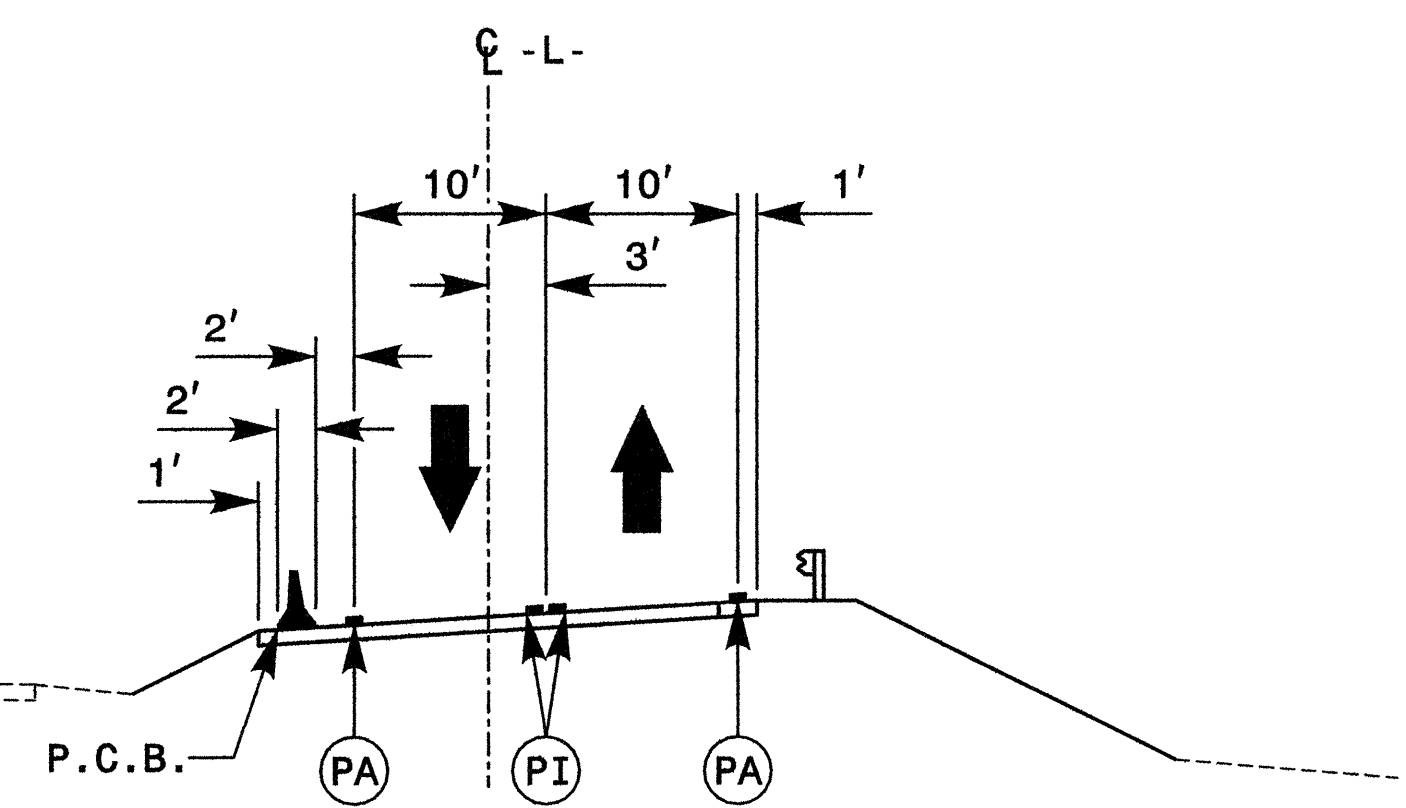
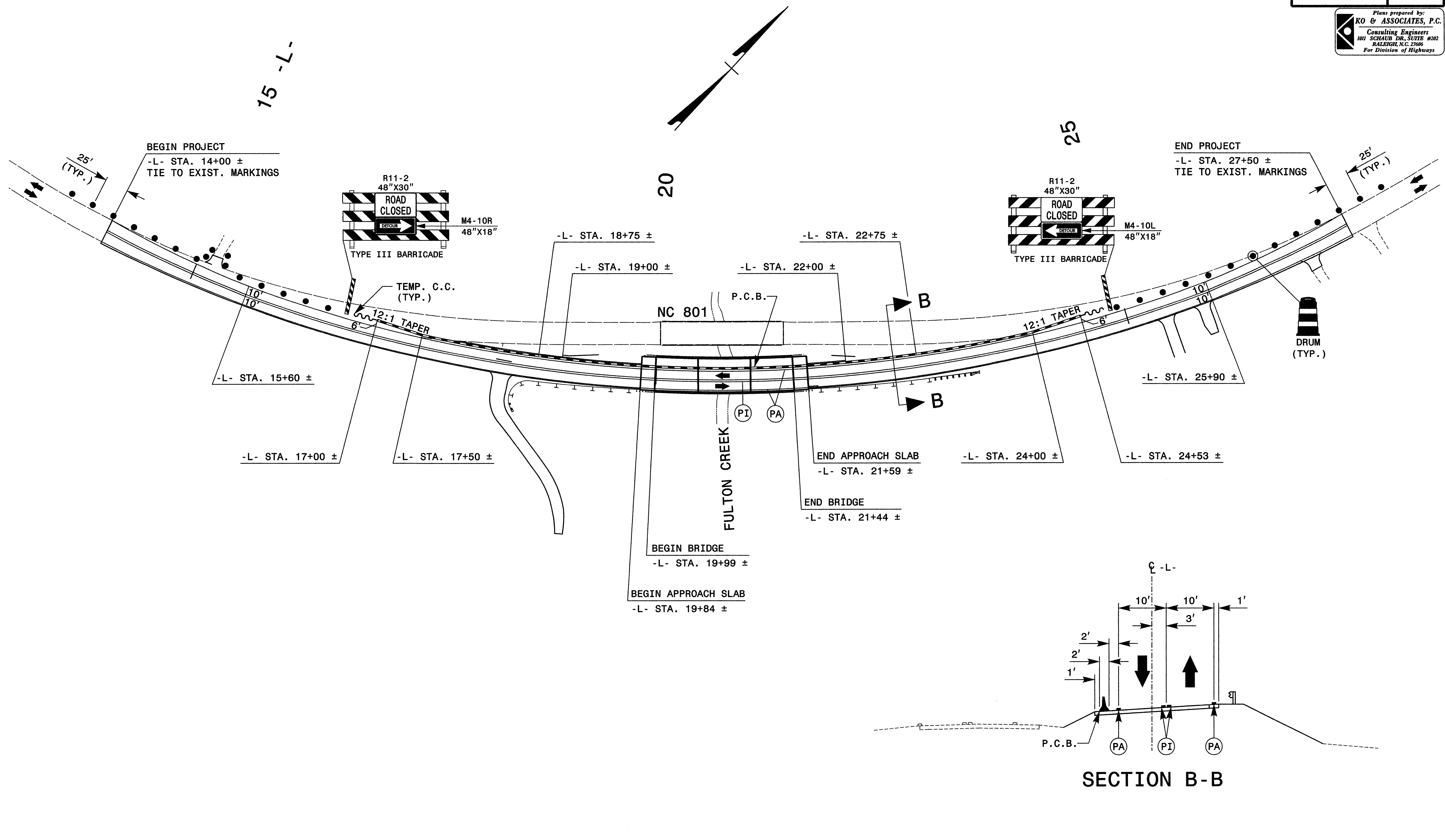
SEAL

PHASE I DETAILS

SCALE: NONE
 DATE: 9-07
 DWG. BY: BLM
 DESIGN BY: BLM
 REVIEWED BY: MTR

REVISIONS	

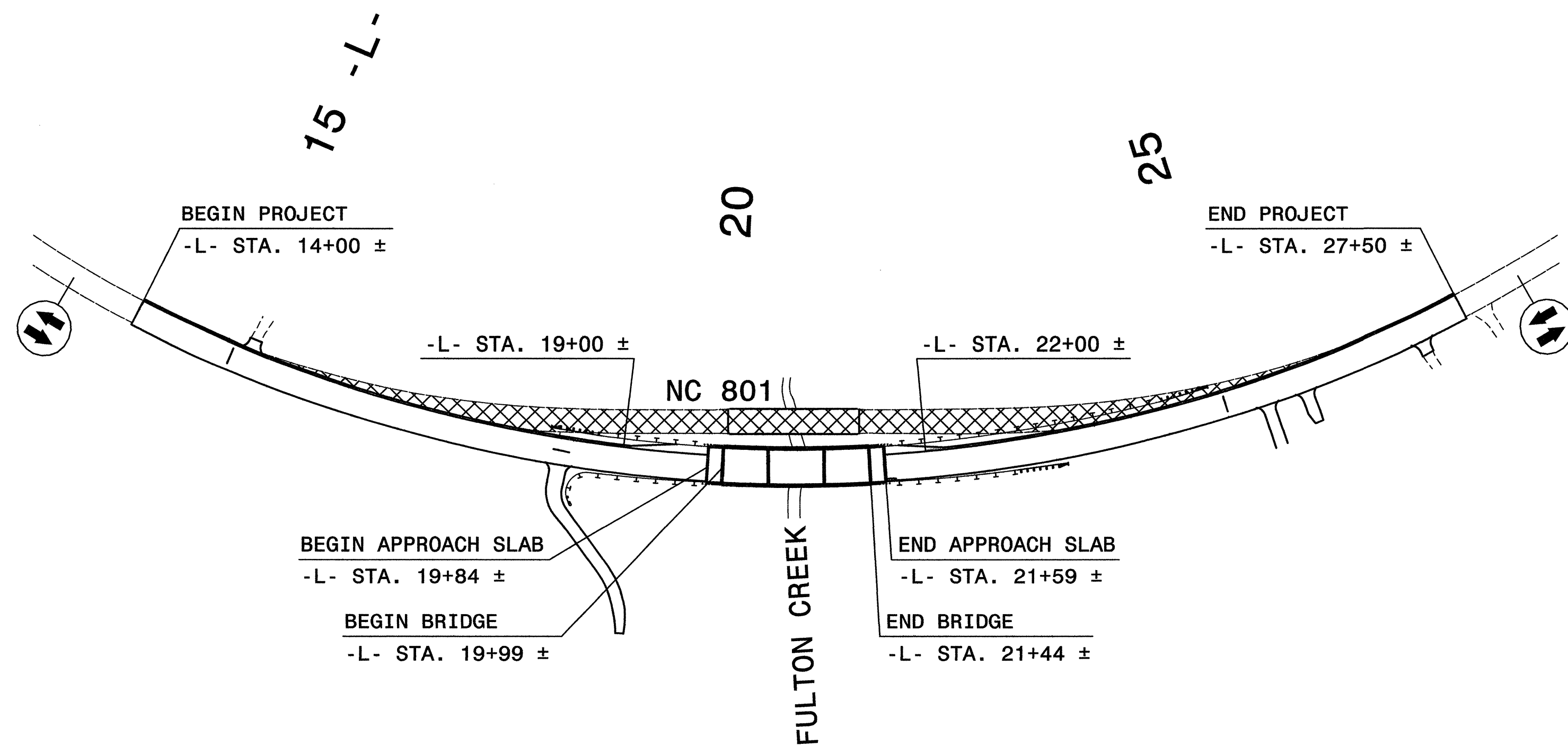
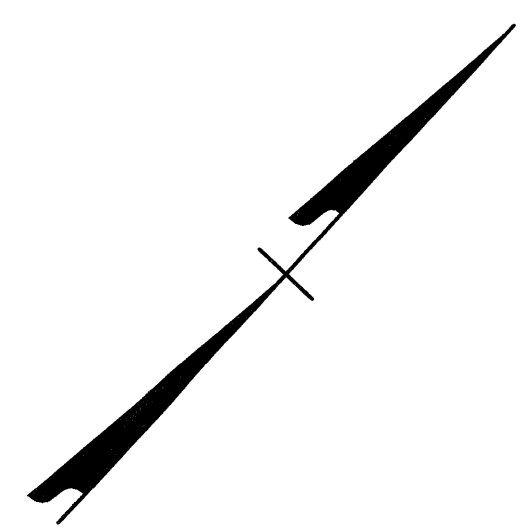
CADD FILE



SECTION B-B

9/17/2007
 S:\1\Group45\B4104_ko\B4104\Traffic\TrafficControl\TCP\002\B4104_TC_Top5.phidertls.dgn
 KO & Associates, P.C.

APPROVED: <i>Michael T. Repka</i> DATE: 9-19-07		PHASE I DETAILS									
SCALE:	NONE		REVISIONS <table border="1"> <tr><td> </td><td> </td></tr> <tr><td> </td><td> </td></tr> <tr><td> </td><td> </td></tr> <tr><td> </td><td> </td></tr> </table>								
DATE:	9-07										
DWG. BY:	BLM										
DESIGN BY:	BLM										
REVIEWED BY:	MTR	CAD FILE <input type="checkbox"/>									



PHASE II

COMPLETE THE FOLLOWING WORK IN PHASE II STEP 1 BEHIND PORTABLE CONCRETE BARRIER LEFT OF PROPOSED -L- FROM -L- STA. 17+00 ± TO -L- STA. 24+53 ± (SEE SHEET TCP-7, SECTION C-C AND ROADWAY PLANS).

- STEP 1: - BEGIN REMOVAL OF EXISTING NC 801 PAVEMENT AND EXISTING BRIDGE.
- COMPLETE AS MUCH PROPOSED FILL AND PAVED SHOULDER WORK UP TO BUT NOT INCLUDING THE FINAL LAYER OF SURFACE COURSE AS POSSIBLE.
 - CONSTRUCT PROPOSED GUARDRAIL.

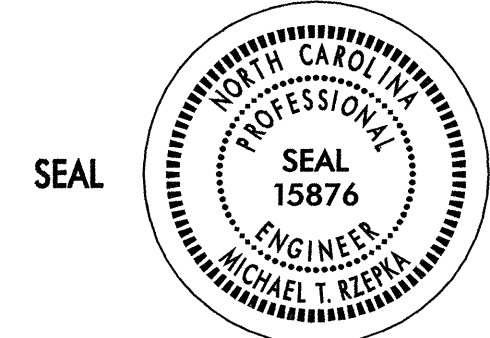
COMPLETE THE FOLLOWING WORK IN PHASE II STEPS 2 THRU 4 USING ROADWAY STANDARD DRAWING NUMBER 1101.02, SHEET 1 OF 9.

- STEP 2: - REMOVE EXISTING PORTABLE CONCRETE BARRIER (SEE SHEET TCP-7 AND SECTION C-C).
- STEP 3: - BEHIND PROPOSED GUARDRAIL COMPLETE REMOVAL OF EXISTING NC 801 PAVEMENT AND EXISTING BRIDGE FROM -L- STA. 14+00 ± TO -L- STA. 27+50 ± (REFER TO ROADWAY STANDARD DRAWING NUMBER 1101.02, SHEET 1 OF 9).
- STEP 4: - COMPLETE PROPOSED FILL AND PAVED SHOULDER WORK LEFT OF PROPOSED -L- UP TO BUT NOT INCLUDING THE FINAL LAYER OF SURFACE COURSE AT THE FOLLOWING LOCATIONS (SEE SHEET TCP-7 AND ROADWAY PLANS):
- L- STA. 14+00 ± TO -L- STA. 19+00 ±
 - L- STA. 22+00 ± TO -L- STA. 27+50 ±
- STEP 5: - USING ROADWAY STANDARD DRAWING NUMBER 1101.02, SHEET 1 OF 9, PLACE THE FINAL LAYER OF SURFACE COURSE, FINAL PAVEMENT MARKINGS AND MARKERS (PERMANENT RAISED) ON PROPOSED -L- FROM -L- STA. 14+00 ± TO -L- STA. 27+50 ±, PER STANDARDS OR AS DIRECTED BY THE ENGINEER. REPLACE ANY ORIGINAL MARKINGS AND MARKERS, OFF THE PROJECT LIMITS, THAT WERE ALTERED OR AS DIRECTED BY THE ENGINEER.
- STEP 6: - REMOVE ALL TRAFFIC CONTROL DEVICES.

LEGEND

- PROPOSED CONSTRUCTION
- REMOVAL OF EXISTING PAVEMENT AND BRIDGE

APPROVED: *Michael T. Kierka* DATE: 9-19-07

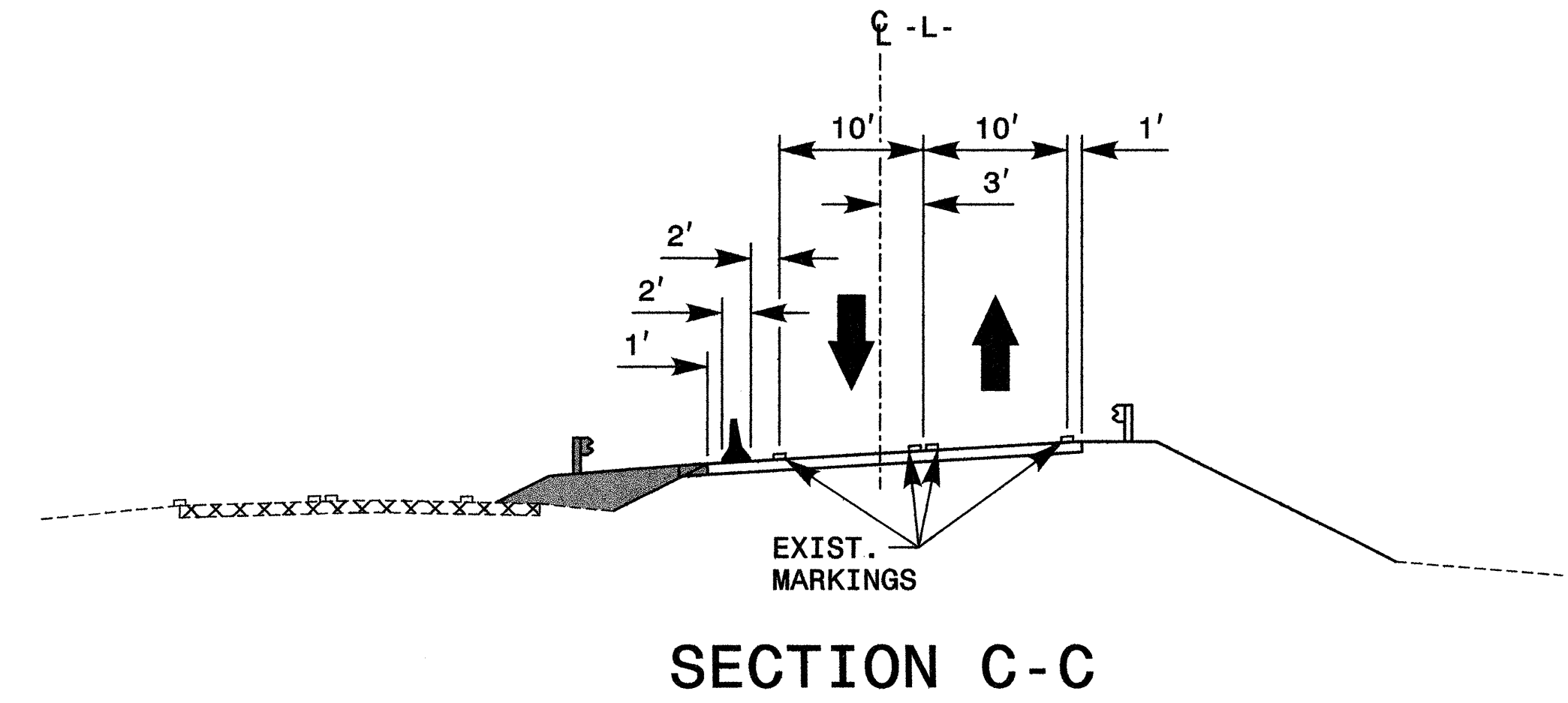
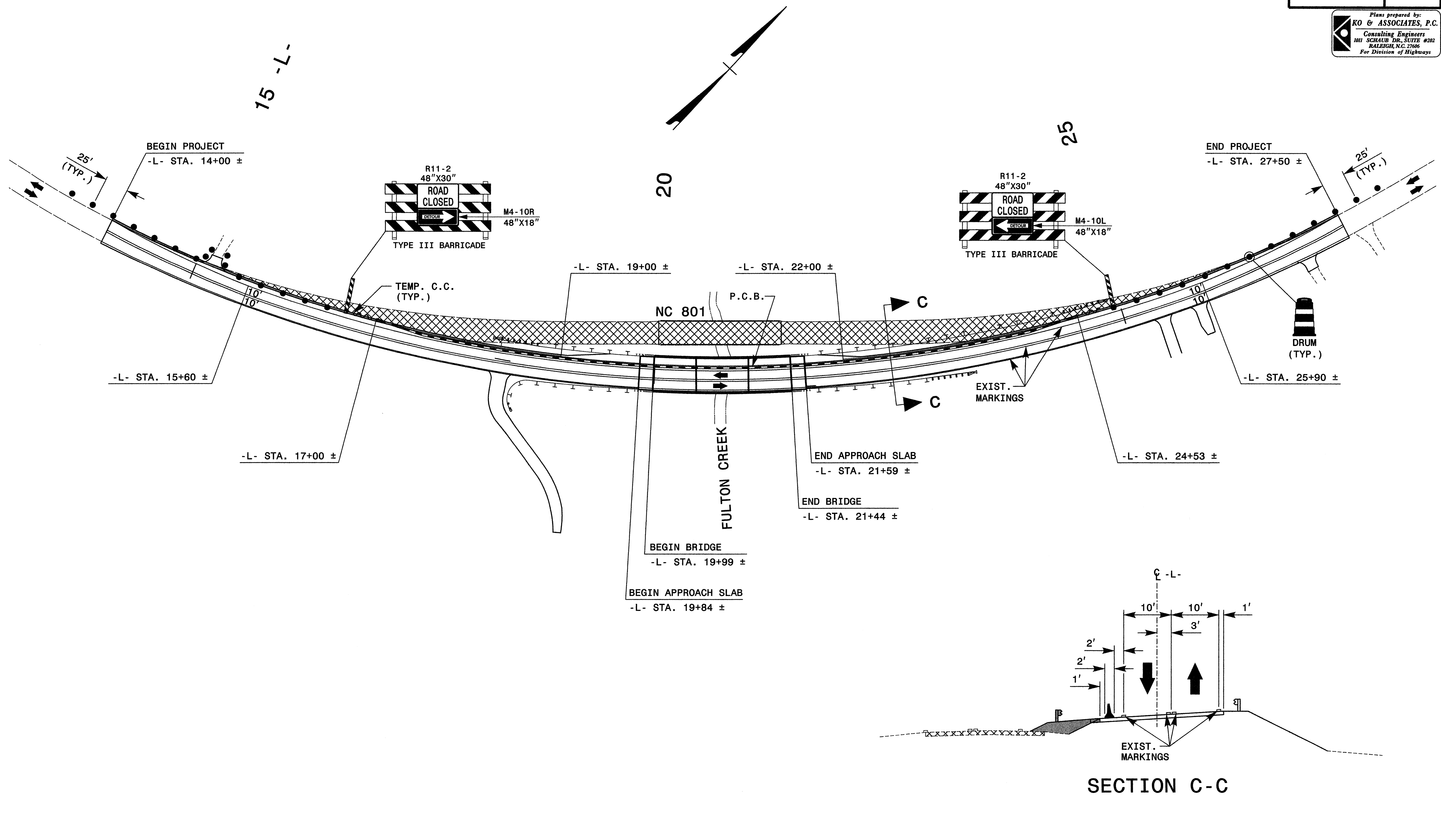


PHASE II OVERVIEW AND PHASING

SCALE:	NONE		REVISIONS
DATE:	9-07		
DWG. BY:	BLM		
DESIGN BY:	BLM		
REVIEWED BY:	MTR		

9/19/2007
 P:\TIP\Group45\B4104\ko\B4104\TrafficControl\TCP\000\B4104_TC_Tcp6_ph2ov.dgn
 KO & Associates, P.C.

Plans prepared by:
KO & ASSOCIATES, P.C.
 Consulting Engineers
 101 SCHAUB DR., SUITE #202
 RALEIGH, N.C. 27606
 For Division of Highways



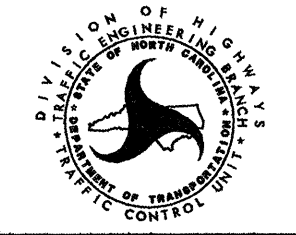
9/17/2007
 P:\17\2007\couj45\B4104\TrafficControl\TCP\002\B4104_TC_Tcp7_ph2detis.dgn
 KO & Associates, P.C.

LEGEND	
	PROPOSED CONSTRUCTION
	REMOVAL OF EXISTING PAVEMENT AND BRIDGE

APPROVED: *Michael R. Koppa* DATE: 9-19-07

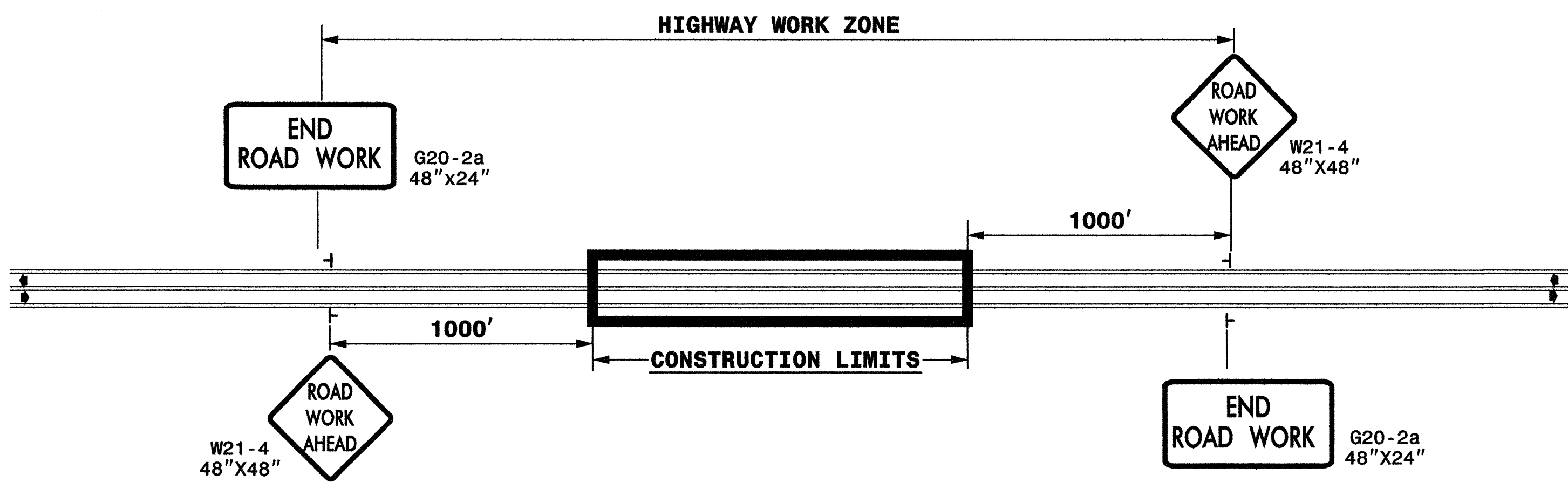
SEAL

PHASE II DETAIL		REVISIONS
SCALE:	NONE	
DATE:	9-07	
DWG. BY:	BLM	
DESIGN BY:	BLM	
REVIEWED BY:	MTR	



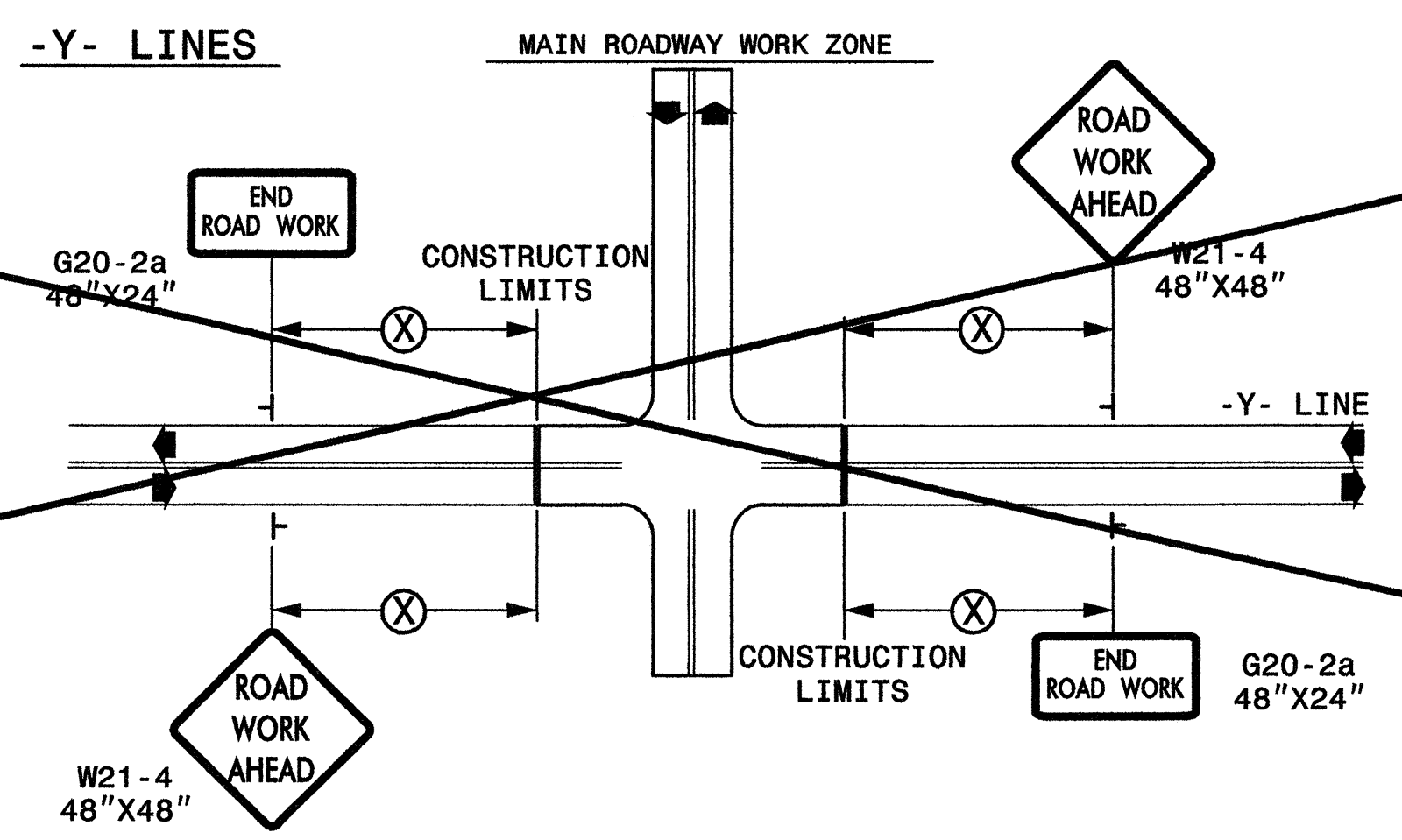
Plans prepared by:
KO & ASSOCIATES, P.C.
 Consulting Engineers
 101 SCHAUB DR., SUITE #202
 RALEIGH, N.C. 27606
 For Division of Highways

TWO-WAY UNDIVIDED ** (L-LINES)



STATE OF NORTH CAROLINA
 DEPT. OF TRANSPORTATION
 DIVISION OF HIGHWAYS
 RALEIGH, N.C.

ROADWAYS INTERSECTING ALONG 2 WAY UNDIVIDED WORK ZONE (Y-LINES)



**DETAIL DRAWING FOR
 TWO-WAY UNDIVIDED
 WORK ZONE WARNING SIGNS**

GENERAL NOTES

- USE FLUORESCENT ORANGE SHEETING (TYPE VII OR HIGHER) ON ALL ADVANCED WORK ZONE SIGNS.
- DO NOT INSTALL ADVANCE WARNING SIGNS MORE THAN 3 DAYS PRIOR TO BEGINNING OF WORK.
- SIGNS SHOWN ARE REQUIRED FOR WORK ZONES THAT WILL REMAIN IN EFFECT OVERNIGHT. FOR SHORT-TERM DAILY MAINTENANCE TYPE OPERATIONS, THIS SIGNING APPLICATION IS OPTIONAL; MAY USE ONLY APPLICABLE ROADWAY STANDARD DRAWINGS INSTEAD. HOWEVER, IF THIS SIGNING APPLICATION IS USED, SIGNS MAY BE PORTABLE MOUNTED.
- ALL SIGN SPACING DIMENSIONS ARE APPROXIMATE, FIELD ADJUST AS NECESSARY OR AS DIRECTED.
- USE 3LB STEEL U-CHANNEL POST OR 4" X 4" WOOD POST FOR ALL WORK ZONE SIGNS. 3LB STEEL U-CHANNEL POSTS MUST MEET THE REQUIREMENTS OF STANDARD SPECIFICATION SECTION 1094-1(B), MAY BE GALVANIZED STEEL, OR MAY BE PAINTED GREEN BY THE POST MANUFACTURER. SQUARE STEEL TUBING POSTS HAVING EQUIVALENT STRENGTH OF THE 3 LB STEEL U-CHANNEL POST ARE ALSO ACCEPTABLE FOR USE. ERECT SIGNS PER ROADWAY STANDARD DRAWING 1110.01. PAYMENT FOR WOOD POSTS, 3LB STEEL U-CHANNEL AND SQUARE STEEL TUBING POSTS WITH SIGNS WILL BE MADE ACCORDING TO STANDARD SPECIFICATION "WORK ZONE SIGNS" SECTION 1110.
- WHEN NECESSARY, USE SPLICING IN ACCORDANCE WITH ROADWAY STANDARD DRAWING NO. 1110.01. REMOVE ENTIRE POST WHEN REMOVING SIGNS WITH SPLICED POSTS.
- DO NOT BACK BRACE SIGN SUPPORTS.
- ** TWO-WAY UNDIVIDED ADVANCE WARNING SIGN CONFIGURATION MAY BE USED ON URBAN MULTI-LANE FACILITIES WHERE CONDITIONS LIMIT THE USE OF DUAL MOUNTED SIGNS AS DETERMINED BY THE ENGINEER.

LEGEND

┆ STATIONARY SIGN

◀ DIRECTION OF TRAFFIC FLOW

SHEET 1 OF 1

APPROVED: <i>Michael T. Kemp</i> DATE: 9-19-07	DETAIL DRAWING FOR TWO-WAY UNDIVIDED AND URBAN FREEWAYS ADVANCED WORK ZONE WARNING SIGNS	
	SCALE: NONE	
	DATE: 9-07	
	DWG. BY: BLM	
	DESIGN BY: BLM	
REVIEWED BY: MTR	REVISIONS	

9/17/2007
 P:\1\Group45\B4104.ko\B4104.Traffic\Traffic\Traffic\002\B4104_TC_Tcp8.wzws.dgn
 KO & ASSOCIATES, P.C.