

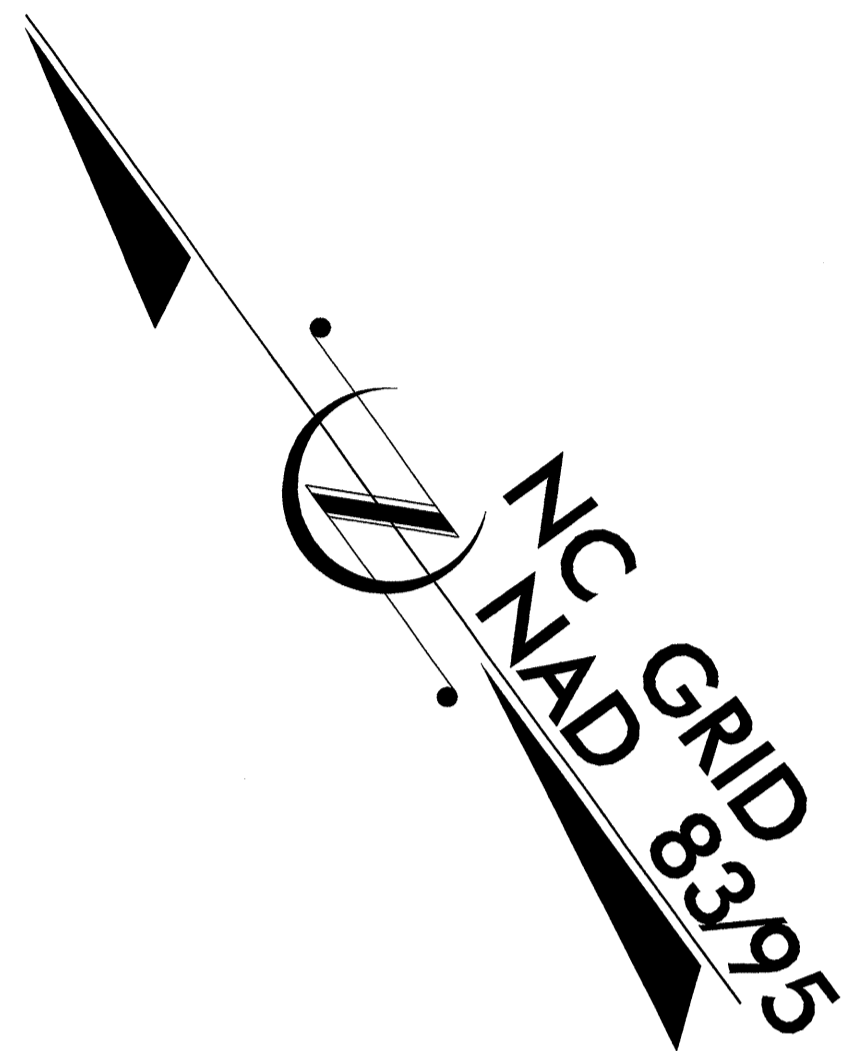
**TIP PROJECT: B-4101**

STATE OF NORTH CAROLINA  
DIVISION OF HIGHWAYS  
PLAN FOR PROPOSED  
HIGHWAY EROSION CONTROL

**DAVIDSON COUNTY**

**LOCATION: BRIDGE NO. 141 OVER SPURGEON CREEK ON SR 1741 (WALBURG-HIGH POINT RD.) IN THOMASVILLE**

**TYPE OF WORK: GRADING, DRAINAGE, PAVING & STRUCTURES**

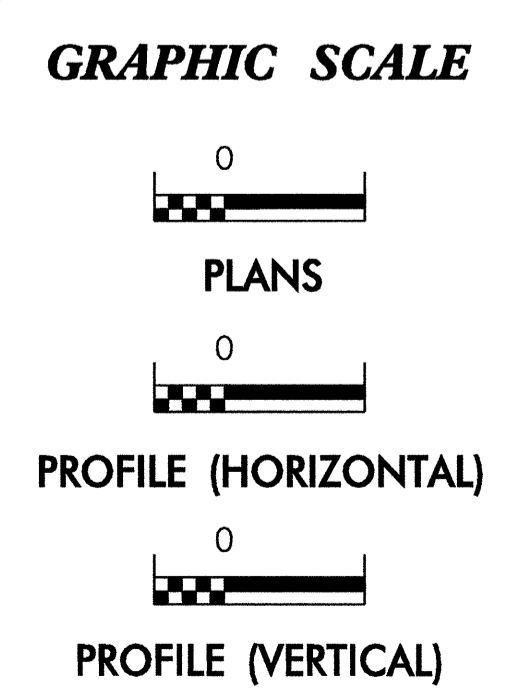
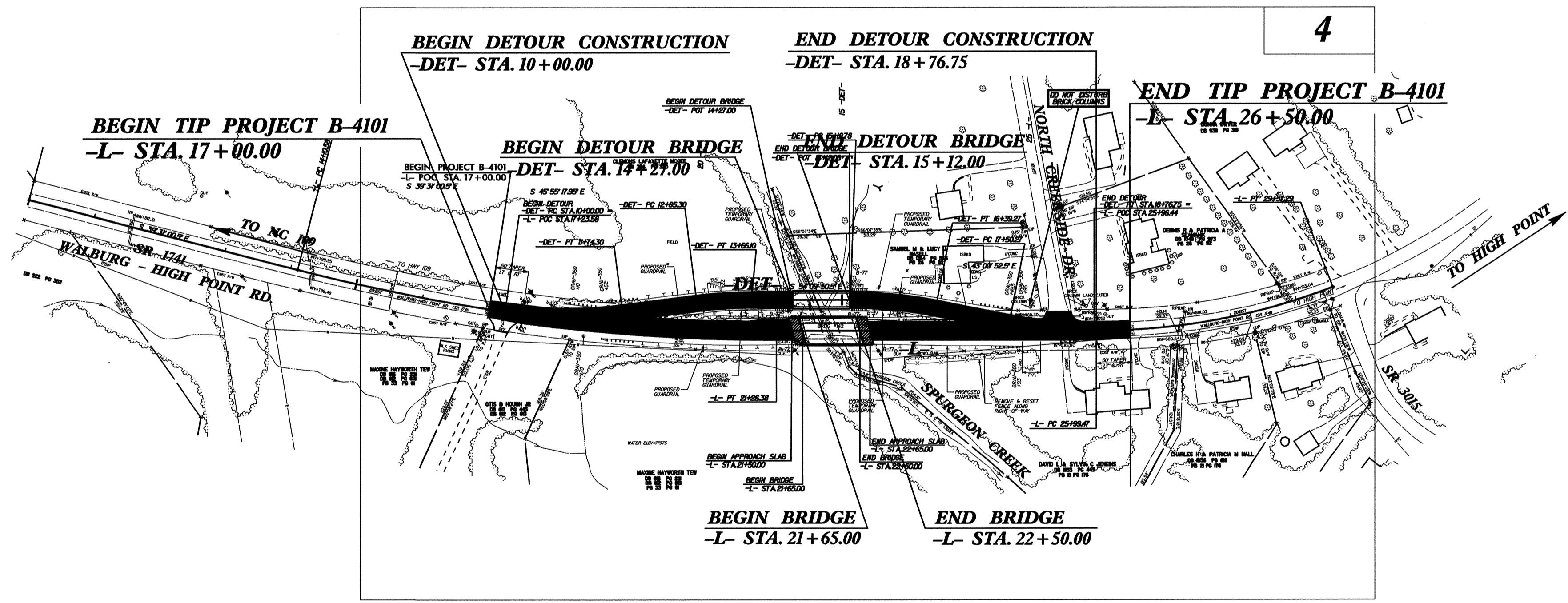


STATE	STATE PROJECT REFERENCE NO.	SHEET NO.	TOTAL SHEETS
N.C.	B-4101	EC-1	
STATE PROJ. NO.	F.A. PROJ. NO.	DESCRIPTION	

**EROSION AND SEDIMENT CONTROL MEASURES**

Std. #	Description	Symbol
1630.03	Streambank Reforestation.....	
1630.05	Temporary Silt Ditch.....	
1605.01	Temporary Diversion.....	
1606.01	Temporary Silt Fence.....	
1622.01	Special Sediment Control Fence.....	
1622.01	Temporary Berms and Slope Drains.....	
1630.01	Riser Basin.....	
1630.02	Silt Basin Type B.....	
1633.01	Temporary Rock Silt Check Type-A.....	
1633.01	Temporary Rock Silt Check Type-B.....	
1634.01	Temporary Rock Sediment Dam Type-A.....	
1634.02	Temporary Rock Sediment Dam Type-B.....	
1635.01	Rock Pipe Inlet Sediment Trap Type-A.....	
1635.02	Rock Pipe Inlet Sediment Trap Type-B.....	
1630.04	Stilling Basin.....	
1632.01	Rock Inlet Sediment Trap: Type A.....	
1632.02	Type B.....	
1632.03	Type C.....	
	Skimmer Basin.....	
	Tiered Skimmer Basin.....	

**THIS PROJECT CONTAINS  
EROSION CONTROL PLANS  
FOR CLEARING AND  
GRUBBING PHASE OF  
CONSTRUCTION.**



ROADSIDE ENVIRONMENTAL UNIT  
DIVISION OF HIGHWAYS  
STATE OF NORTH CAROLINA

Prepared In the Office of:  
**ROADSIDE ENVIRONMENTAL UNIT**  
1 South Wilmington St.  
Raleigh, NC 27611  
**2006 STANDARD SPECIFICATIONS**

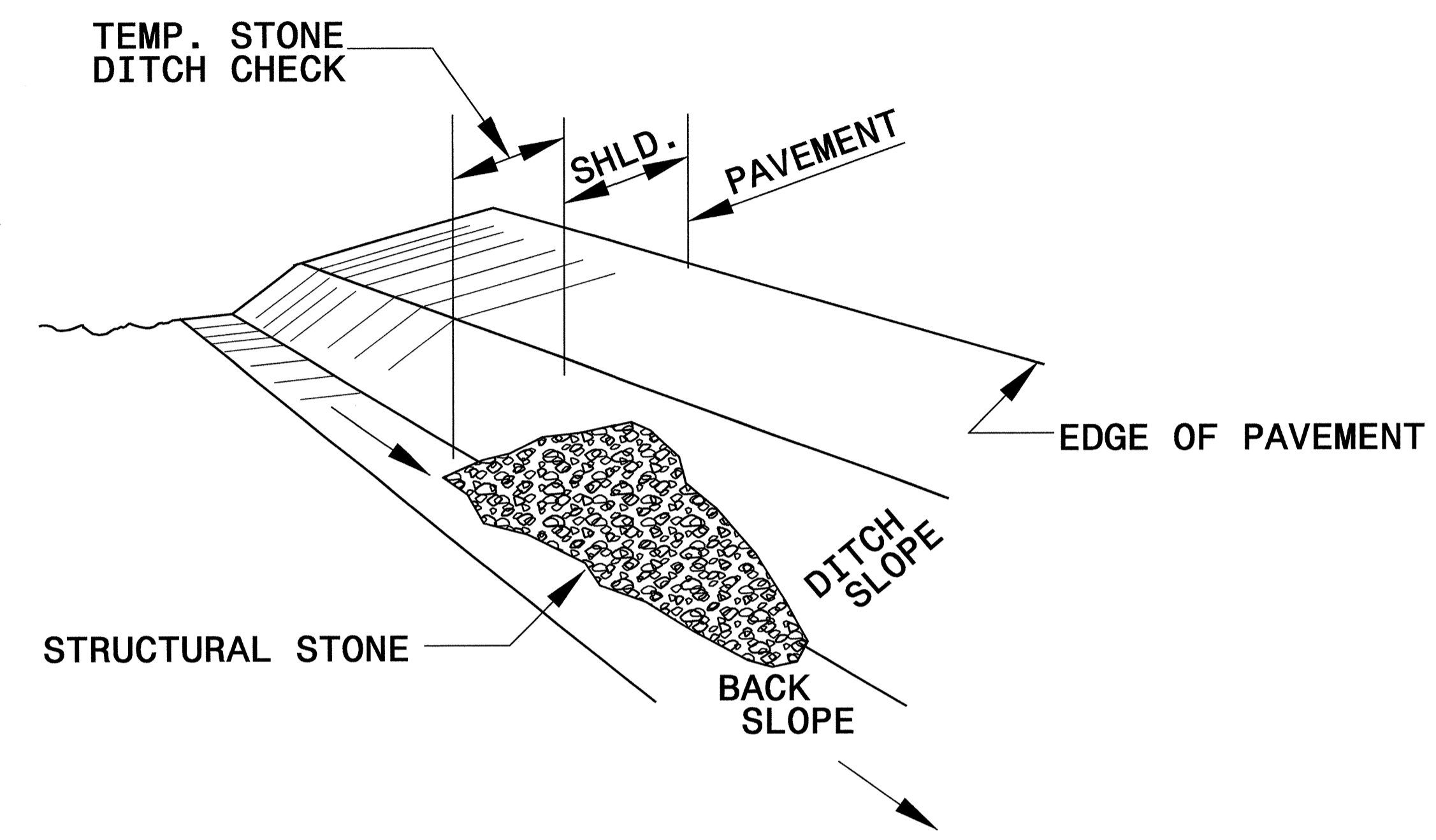
Roadway Standard Drawings

The following roadway english standards as appear in "Roadway Standard Drawings"- Roadway Design Unit - N. C. Department of Transportation - Raleigh, N. C., dated July 18, 2006 and the latest revision thereto are applicable to this project and by reference hereby are considered a part of these plans.

1605.01 Temporary Silt Fence	1632.03 Rock Inlet Sediment Trap Type C
1607.01 Gravel Construction Entrance	1633.01 Temporary Rock Silt Check Type A
1622.01 Temporary Berms and Slope Drains	
1630.03 Temporary Silt Ditch	

PROJECT REFERENCE NO. B-4101	SHEET NO. EC-2
RW SHEET NO.	
ROADWAY DESIGN ENGINEER	HYDRAULICS ENGINEER

# TEMPORARY ROCK SILT CHECK TYPE 'B' DETAIL

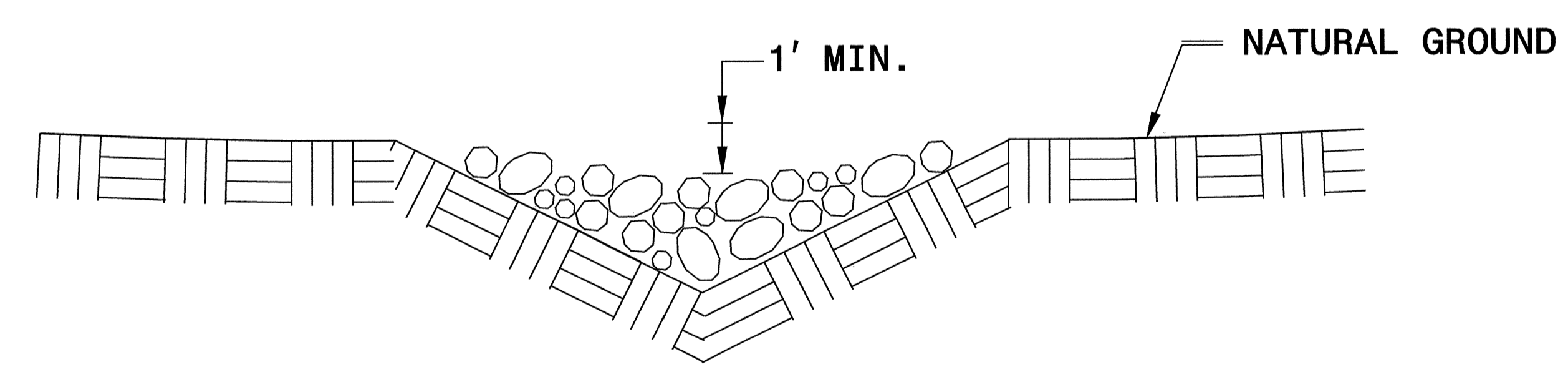


**ISOMETRIC VIEW**

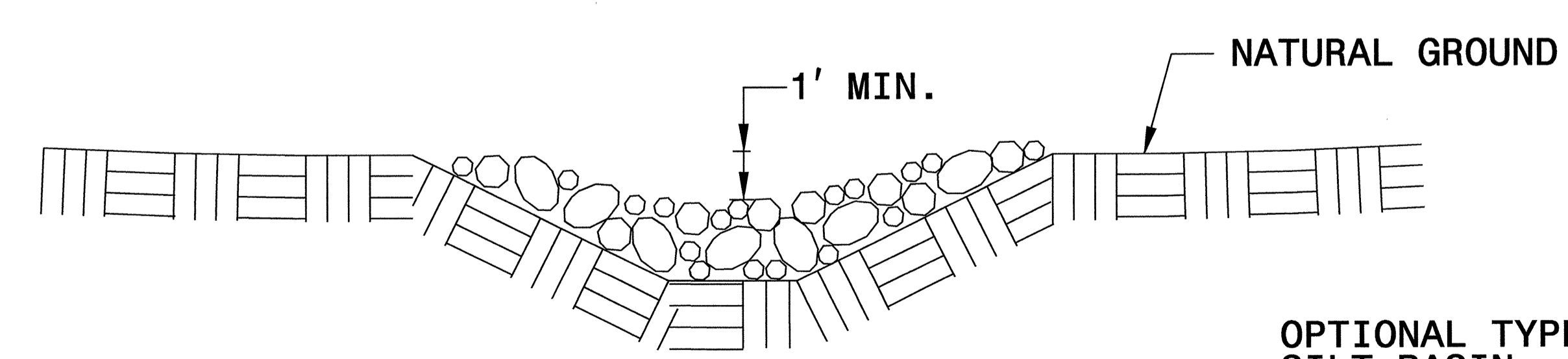
**NOTES:**

USE CLASS 'B' EROSION CONTROL STONE FOR STRUCTURAL STONE.

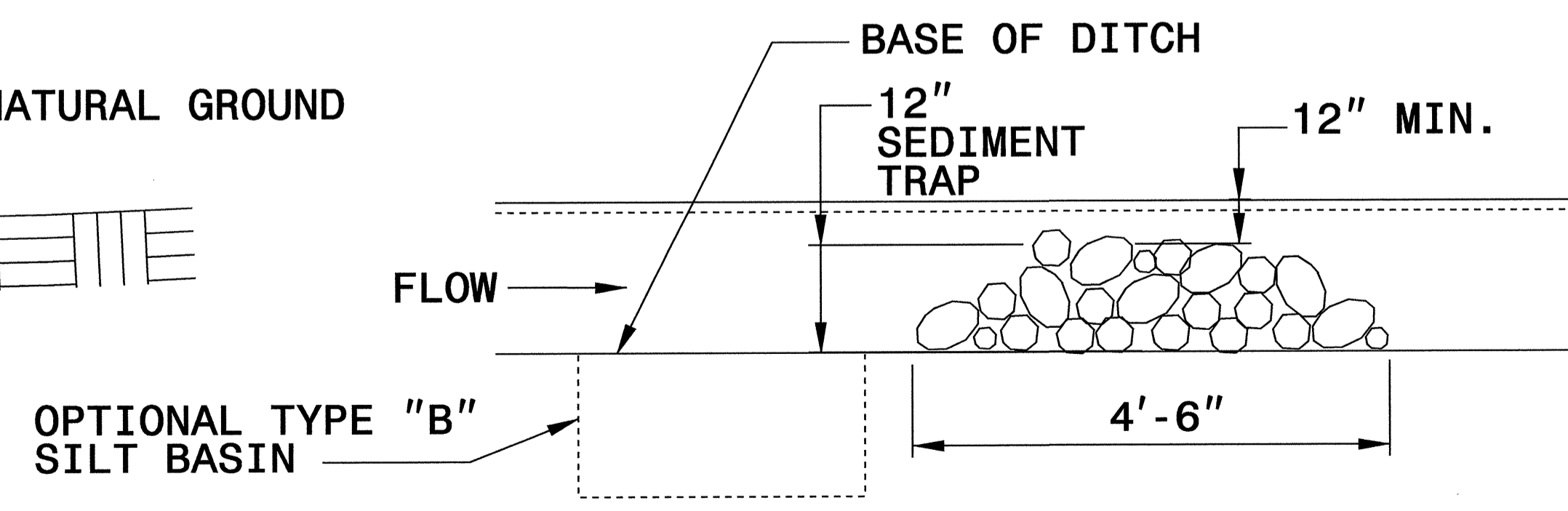
THE ENGINEER MAY DIRECT THE OPTION OF CLASS "A" STONE FOR SITES HAVING LESS THAN ONE (1) ACRE DRAINAGE AREA AND A DITCH GRADE LESS THAN 3%.



**CROSS SECTION VEE DITCH**



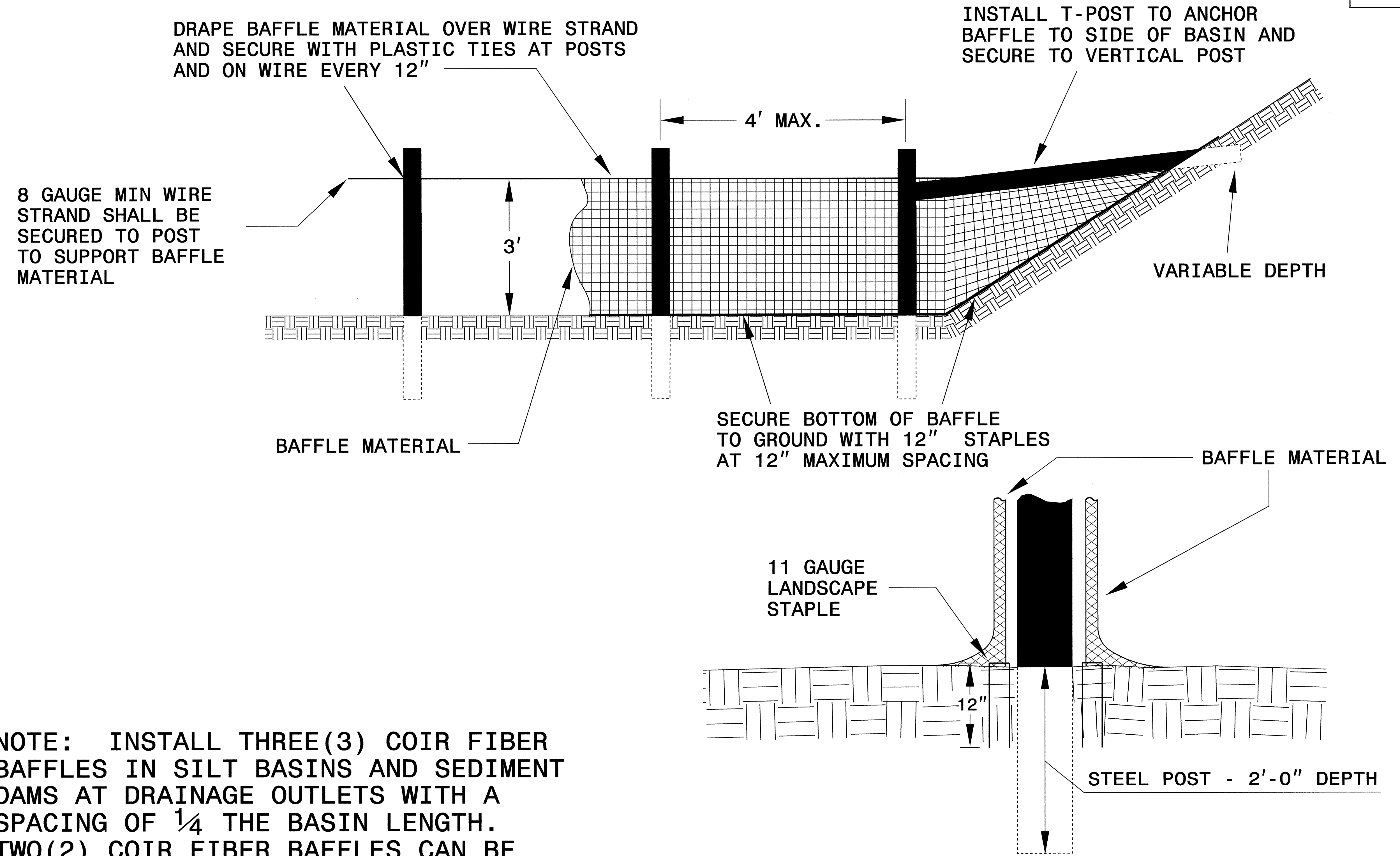
**CROSS SECTION TRAPEZOIDAL DITCH**



**ELEVATION VIEW**

PROJECT REFERENCE NO. B-4101	SHEET NO. EC-2A
RW SHEET NO.	
ROADWAY DESIGN ENGINEER	HYDRAULICS ENGINEER

# COIR FIBER BAFFLE DETAIL



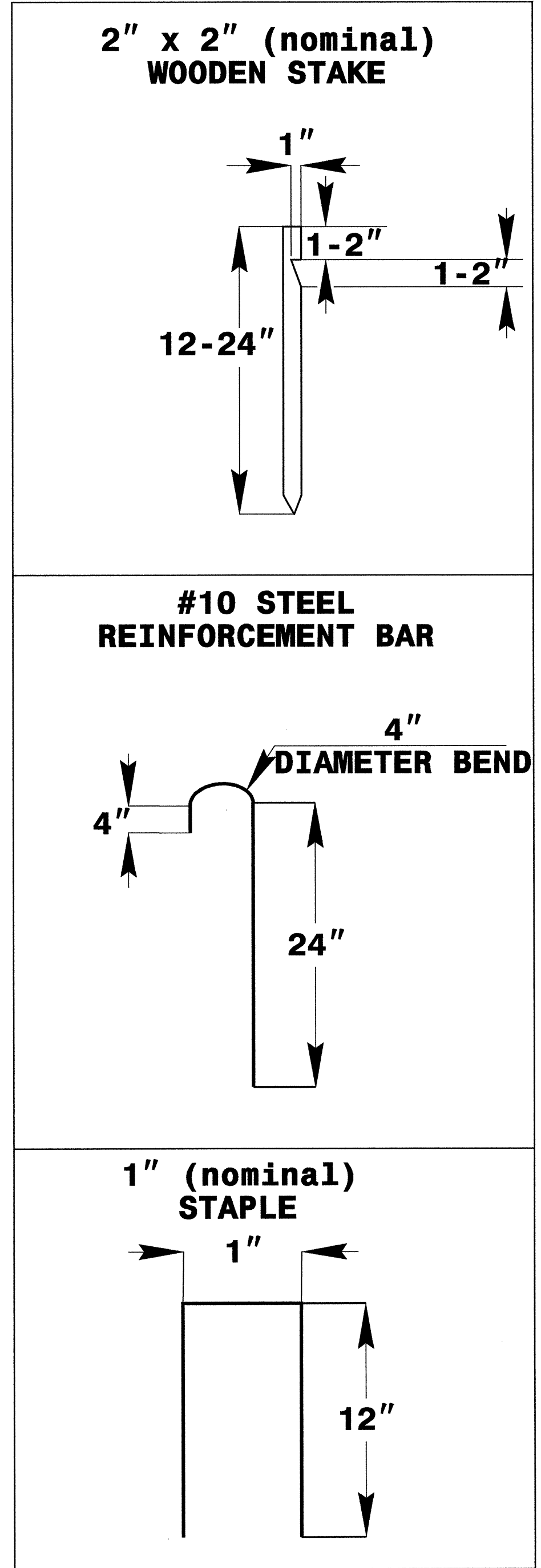
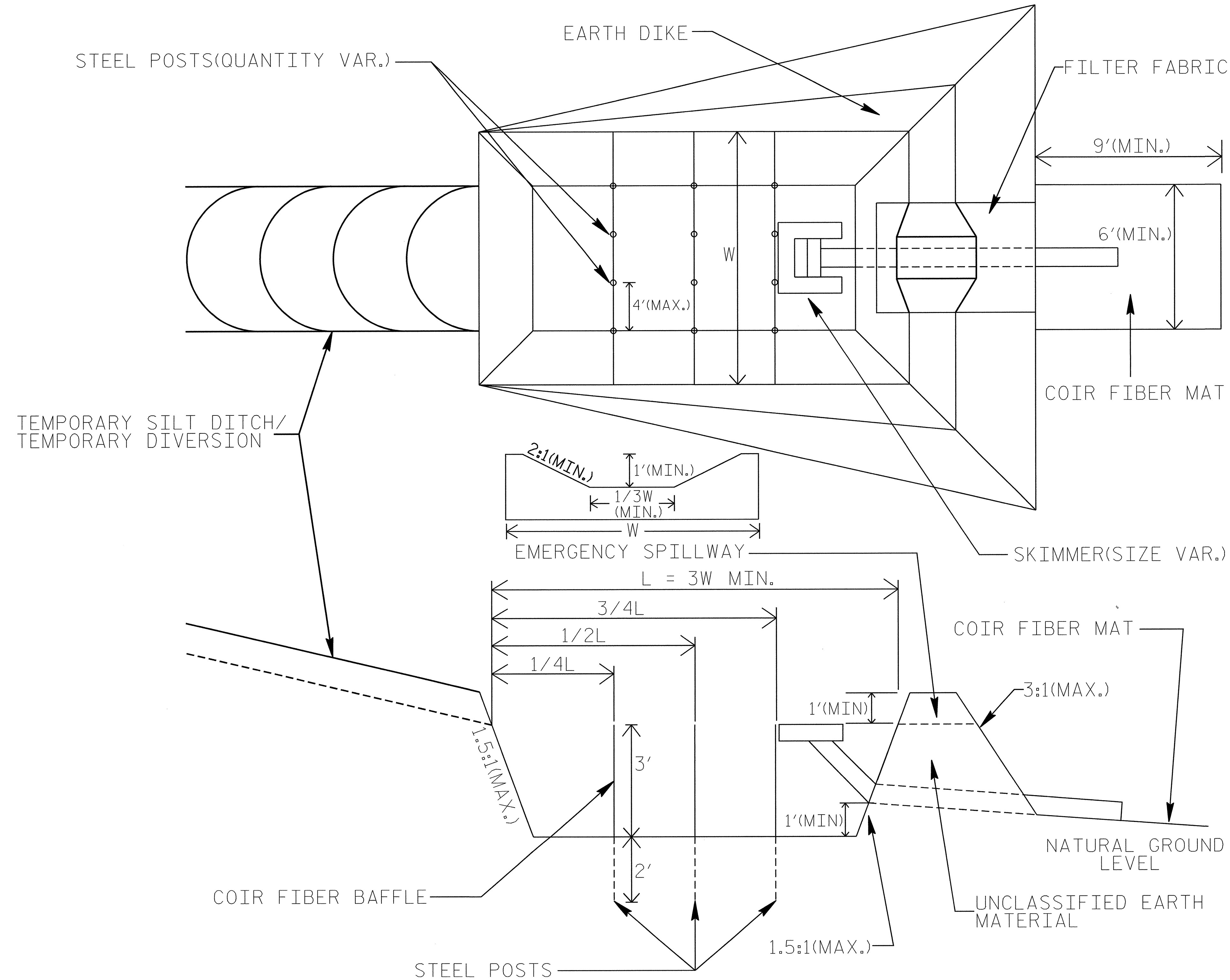
NOTE: INSTALL THREE (3) COIR FIBER BAFFLES IN SILT BASINS AND SEDIMENT DAMS AT DRAINAGE OUTLETS WITH A SPACING OF  $\frac{1}{4}$  THE BASIN LENGTH. TWO (2) COIR FIBER BAFFLES CAN BE INSTALLED IN SILT BASINS AND DAMS LESS THAN 20 FT. IN LENGTH WITH A SPACING OF  $\frac{1}{3}$  THE BASIN LENGTH.

BAFFLE MATERIAL SHALL BE SECURED TO THE BOTTOM AND SIDES OF BASIN USING 12" LANDSCAPE STAPLES



# SKIMMER BASIN WITH BAFFLES DETAIL

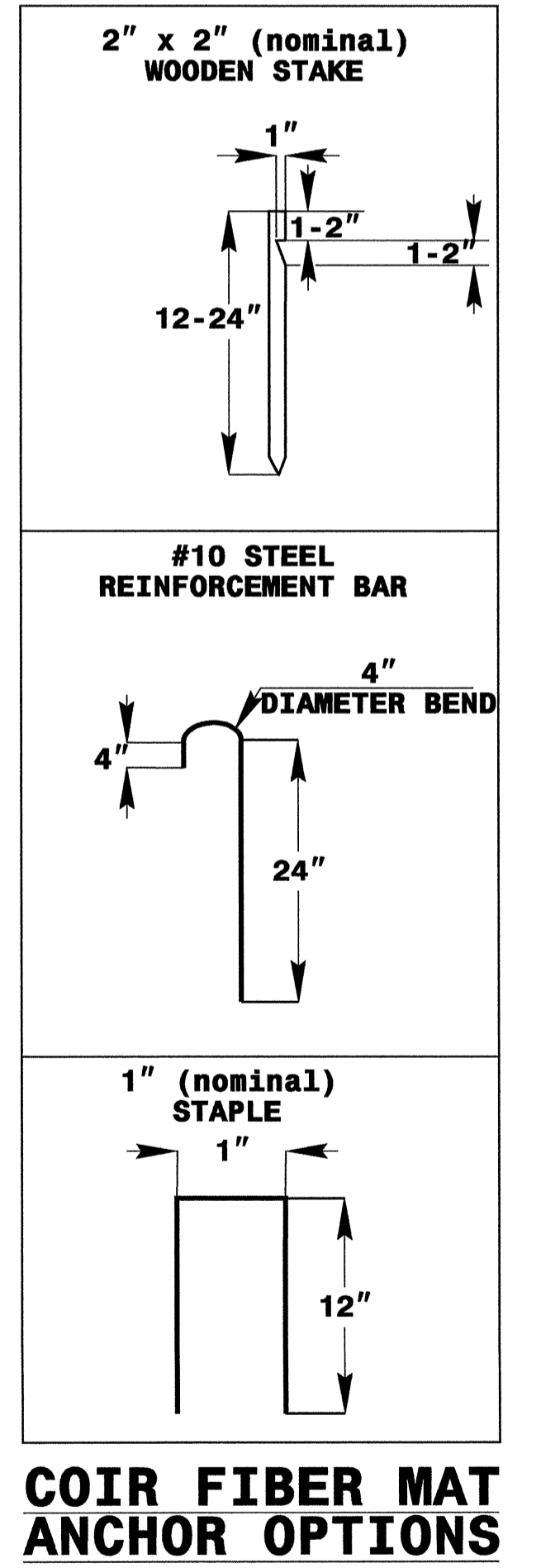
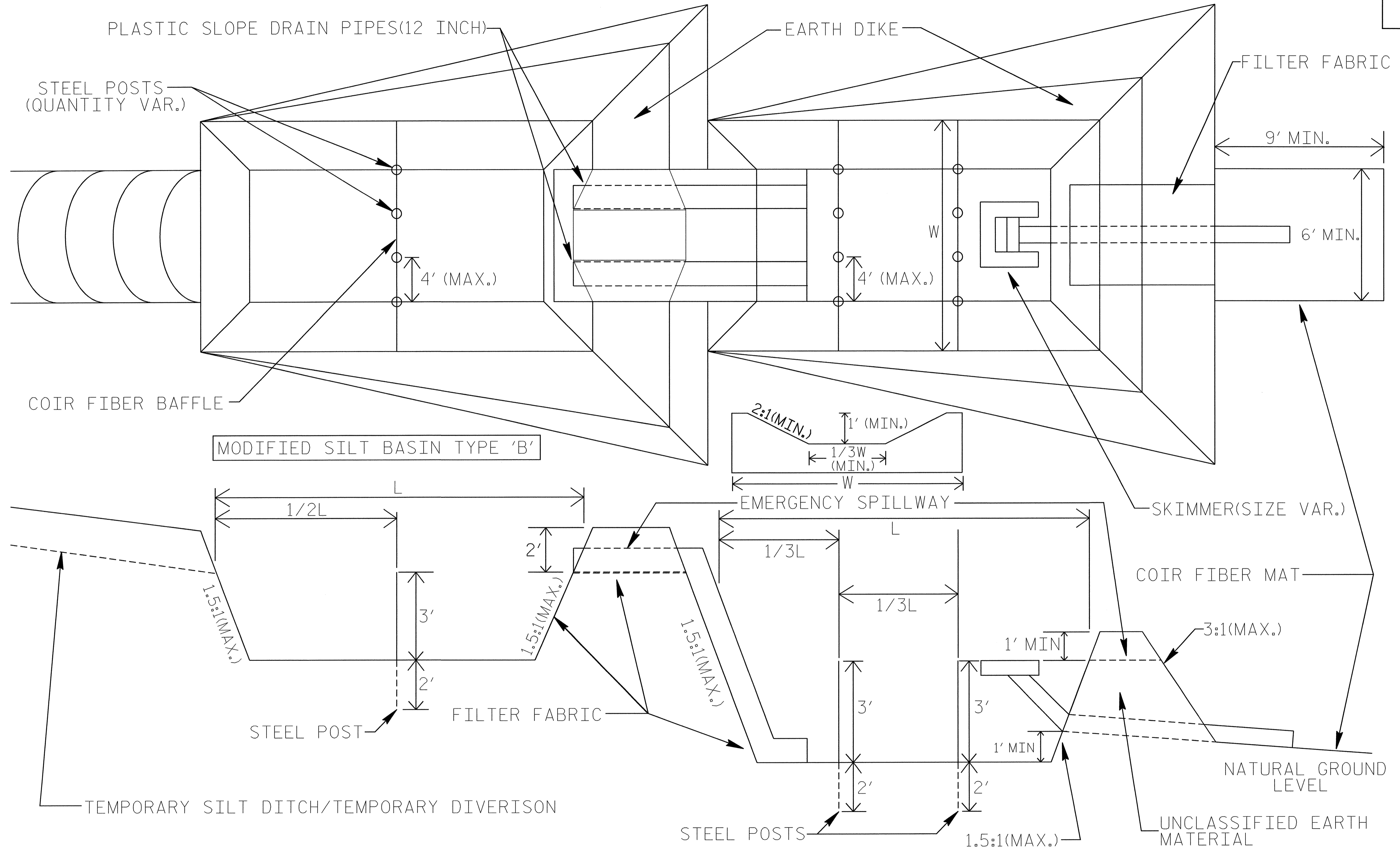
PROJECT REFERENCE NO. B-4101	SHEET NO. EC-2B
RW SHEET NO.	
ROADWAY DESIGN ENGINEER	HYDRAULICS ENGINEER



**COIR FIBER MAT ANCHOR OPTIONS**

# TIERED SKIMMER BASIN DETAIL

PROJECT REFERENCE NO. B-4101	SHEET NO. EC-2C
RW SHEET NO.	
ROADWAY DESIGN ENGINEER	HYDRAULICS ENGINEER

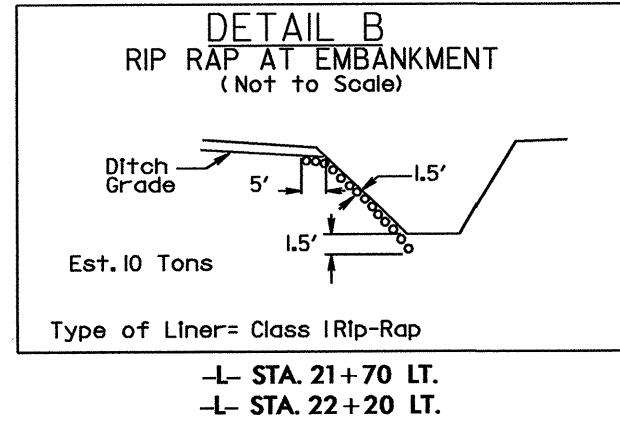
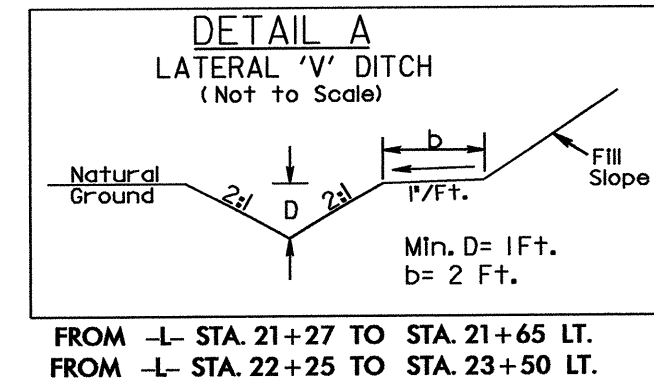


**NOTE**

ADDITIONAL MODIFIED SILT BASINS TYPE 'B' MAY BE NEEDED DEPENDING ON SLOPE.







NOTE: UTILIZE TEMPORARY ROCK SILT CHECK TYPE - A AND/OR SKIMMER BASIN AS STILLING BASIN WHERE APPLICABLE.

CLEARING AND GRUBBING EROSION CONTROL FOR CONSTRUCTION SHEET 4

NOTE: PLACE TEMPORARY ROCK SEDIMENT DAMS TYPE - B AND TEMPORARY ROCK SILT CHECKS TYPE - A AT DRAINAGE OUTLETS.

INSTALL FILTER FABRIC UNDER TEMPORARY ROCK SILT CHECK(S) TYPE A IN PERMITTED WETLANDS.

Modified Silt Basin Type 'B' 30 x 5 x 3 (See Tiered Skimmer Basin Detail) ID 4.1C

30 x 5 x 3 1.5 inch Skimmer with 1 inch Orifice Diameter 3 ft. weir (See Tiered Skimmer Basin Detail) ID 4.1C

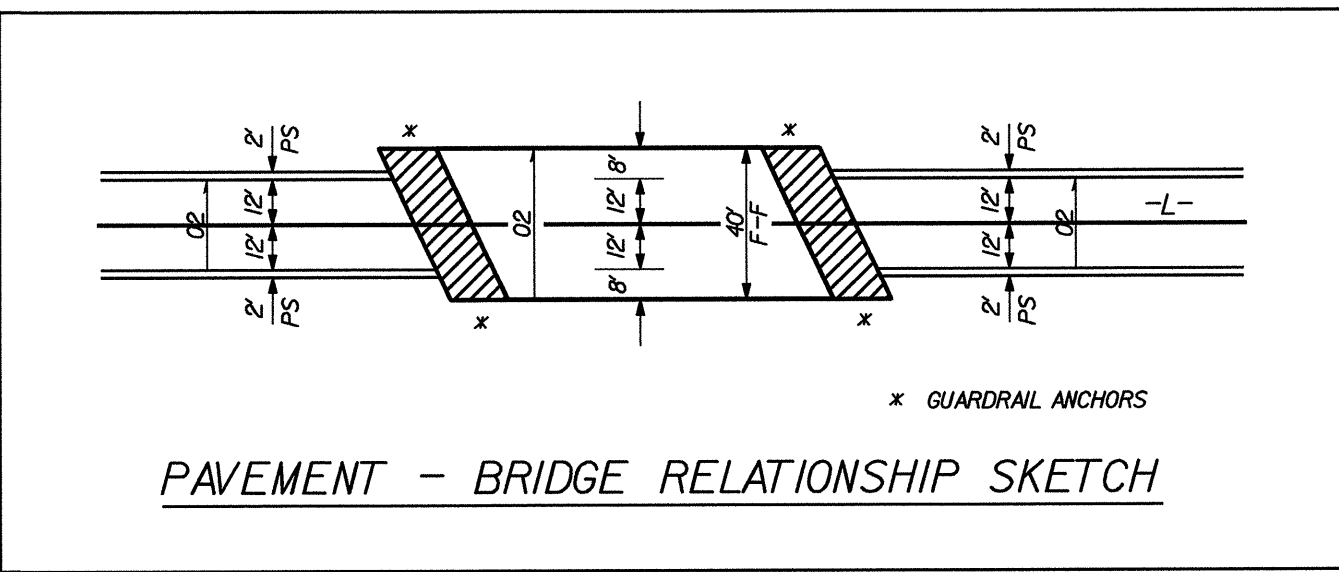
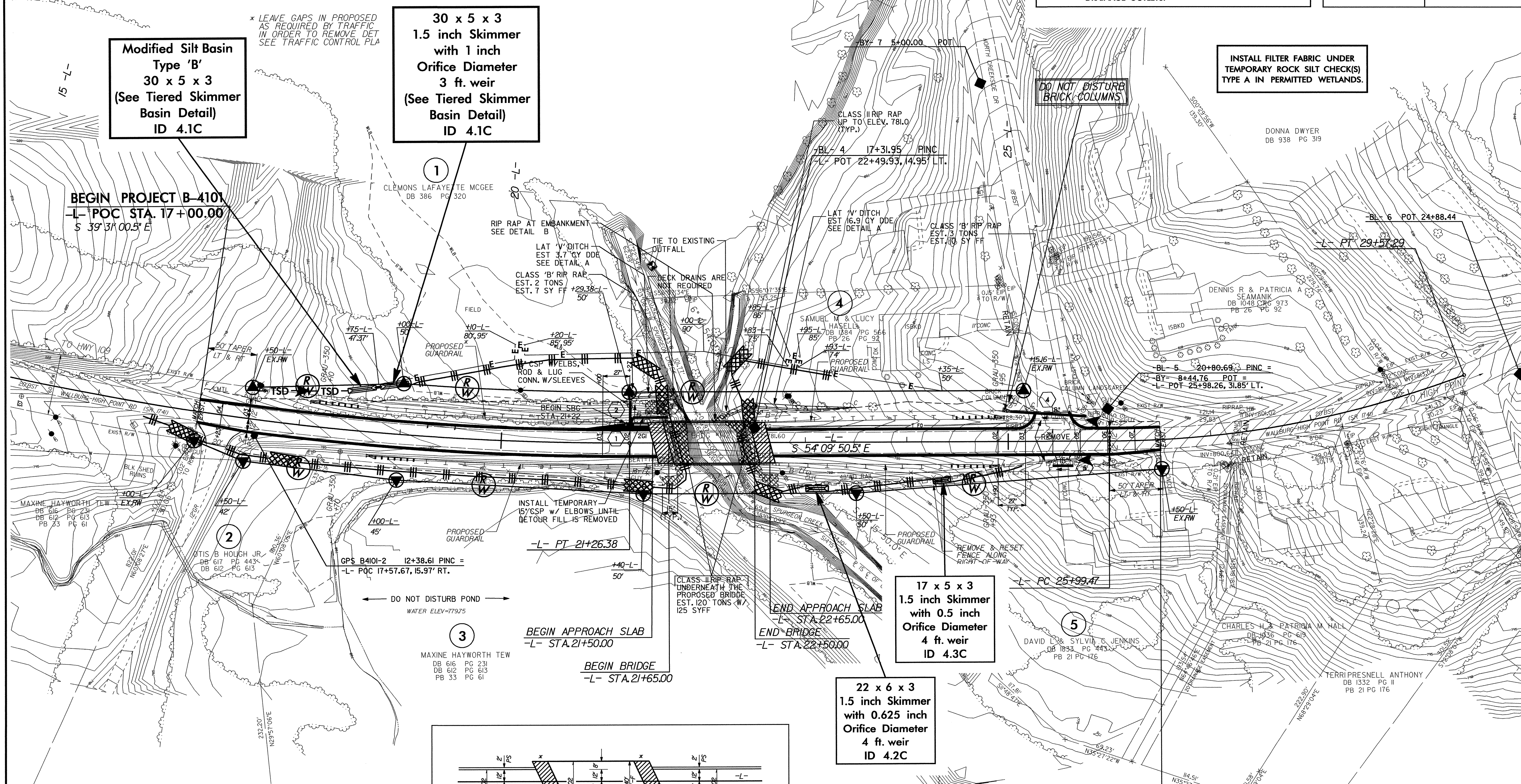
17 x 5 x 3 1.5 inch Skimmer with 0.5 inch Orifice Diameter 4 ft. weir ID 4.3C

22 x 6 x 3 1.5 inch Skimmer with 0.625 inch Orifice Diameter 4 ft. weir ID 4.2C

BEGIN PROJECT B-4101 -L- POC STA. 17+00.00 S 39°31'00.5" E

BEGIN BRIDGE -L- STA. 21+65.00

END PROJECT B-4101 -L- POC STA. 26+50.00



PI Sta 17+70.44	PI Sta 27+80.37
Δ = 14° 38' 50.1" (LT)	Δ = 20° 48' 50.3" (LT)
D = 2' 02" 46.6"	D = 5' 49" 00.6"
L = 715.80'	L = 357.82'
T = 359.86'	T = 180.91'
R = 2,800.00'	R = 985.00'
SE = 0.030	SE = EXIST
RO = 8'	

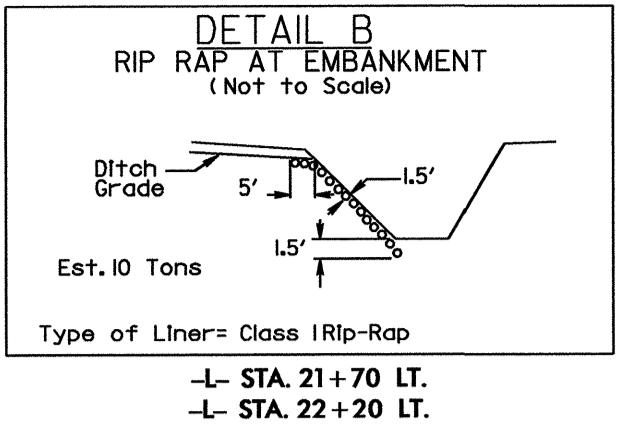
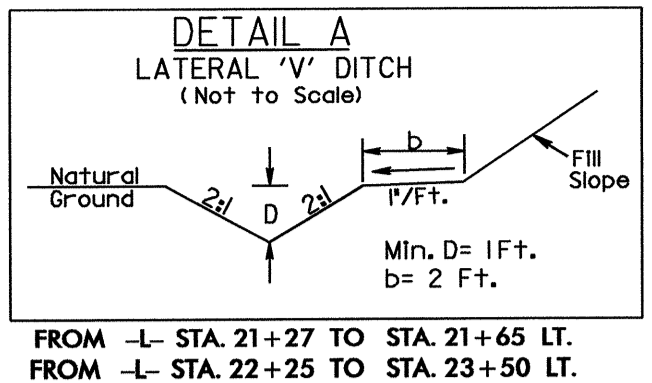
**LEGEND**  
 PAVED SHOULDER  
 APPROACH SLAB

FOR -L- PROFILE, SEE SHEET NO. 5  
 FOR DETOUR, SEE SHEET NO. 2-B



PROJECT REFERENCE NO.	SHEET NO.
B-4101	EC-5/CONST.2-B
RW SHEET NO.	
ROADWAY DESIGN ENGINEER	HYDRAULICS ENGINEER

# DETOUR

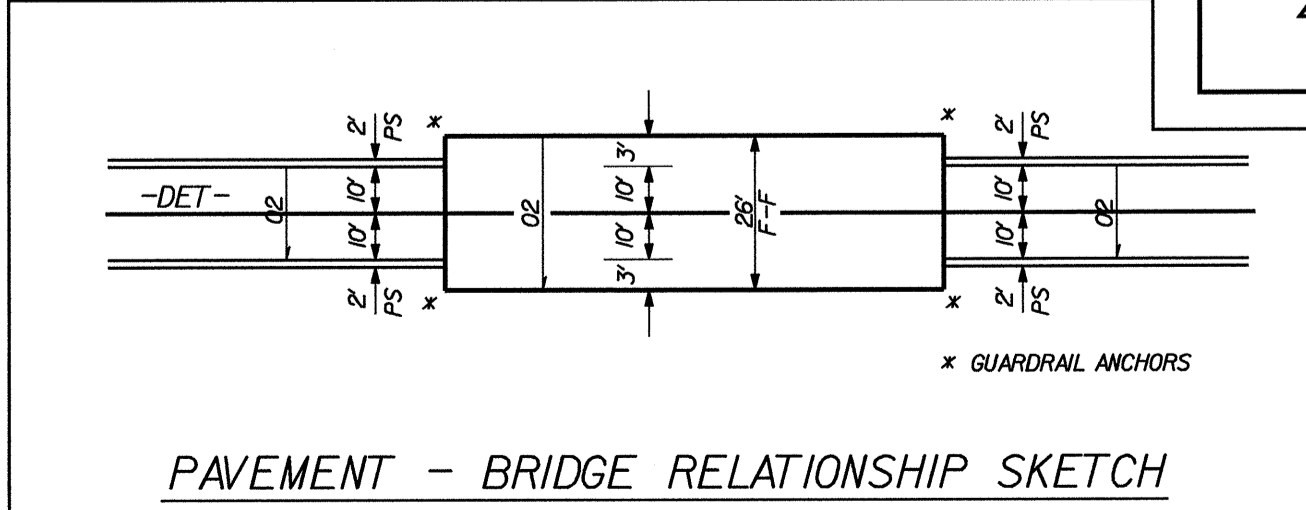
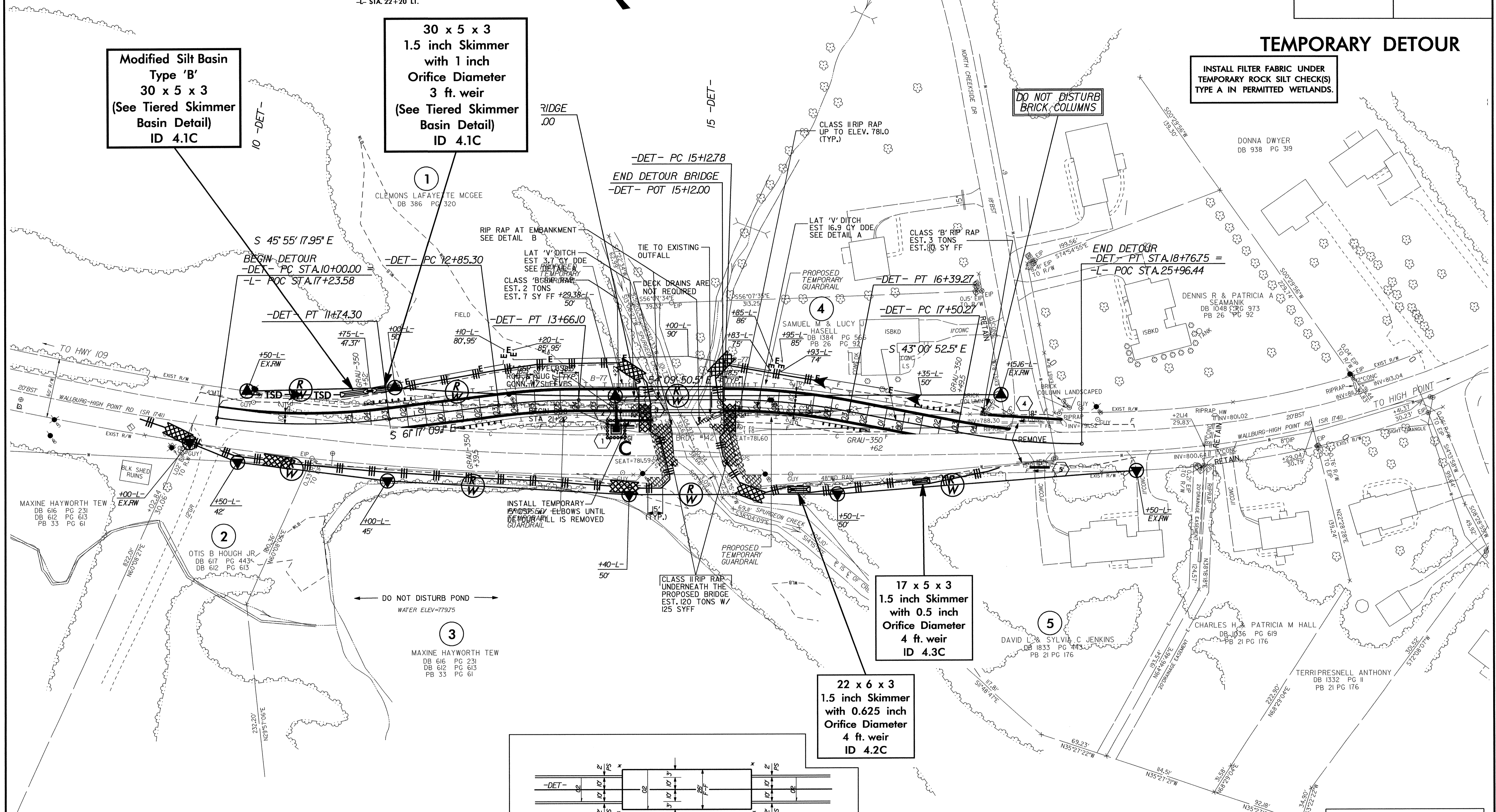


**Modified Silt Basin  
Type 'B'  
30 x 5 x 3  
(See Tiered Skimmer  
Basin Detail)  
ID 4.1C**

**30 x 5 x 3  
1.5 inch Skimmer  
with 1 inch  
Orifice Diameter  
3 ft. weir  
(See Tiered Skimmer  
Basin Detail)  
ID 4.1C**

**INSTALL FILTER FABRIC UNDER  
TEMPORARY ROCK SILT CHECK(S)  
TYPE A IN PERMITTED WETLANDS.**

## TEMPORARY DETOUR



**NOTE:**  
UTILIZE TEMPORARY ROCK SILT CHECK TYPE - A AND/OR  
SKIMMER BASIN AS STILLING BASIN WHERE APPLICABLE.

**17 x 5 x 3  
1.5 inch Skimmer  
with 0.5 inch  
Orifice Diameter  
4 ft. weir  
ID 4.3C**

**22 x 6 x 3  
1.5 inch Skimmer  
with 0.625 inch  
Orifice Diameter  
4 ft. weir  
ID 4.2C**

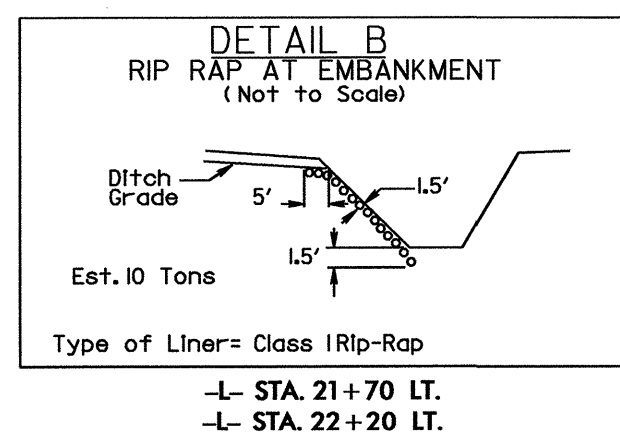
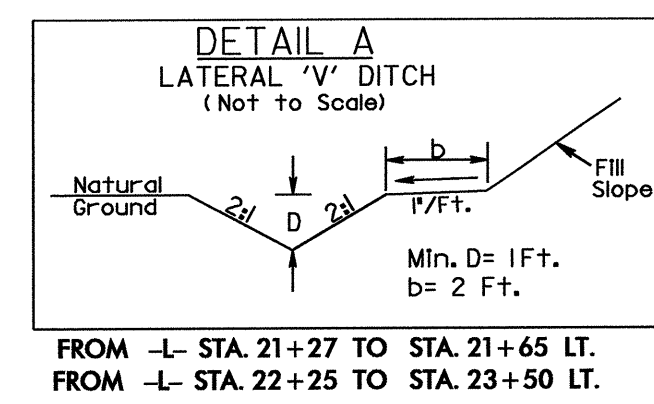
**LEGEND**  
PAVED SHOULDER

FOR -DET- PROFILE, SEE SHEET NO. 5  
FOR -L- PLAN, SEE SHEET NO. 4



PROJECT REFERENCE NO.	SHEET NO.
B-4101	EC-6/CONST.4
RW SHEET NO.	
ROADWAY DESIGN ENGINEER	HYDRAULICS ENGINEER

NOTE: UTILIZE TEMPORARY ROCK SILT CHECK TYPE - A AND/OR SKIMMER BASIN AS STILLING BASIN WHERE APPLICABLE.



**Modified Silt Basin**  
Type 'B'  
30 x 5 x 3  
(See Tiered Skimmer Basin Detail)  
ID 4.1C

**30 x 5 x 3**  
1.5 inch Skimmer  
with 1 inch  
Orifice Diameter  
3 ft. weir  
(See Tiered Skimmer Basin Detail)  
ID 4.1C

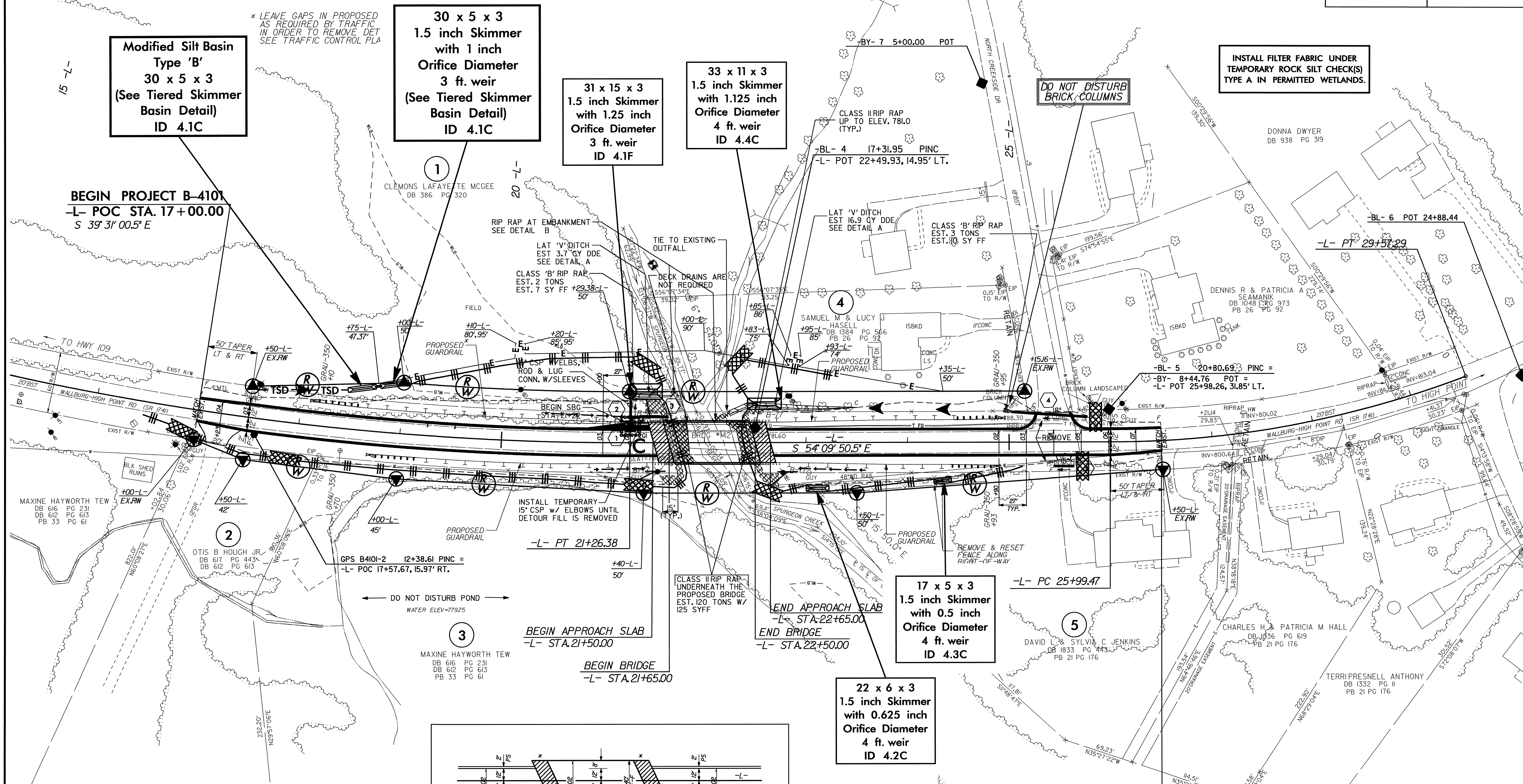
**31 x 15 x 3**  
1.5 inch Skimmer  
with 1.25 inch  
Orifice Diameter  
3 ft. weir  
ID 4.1F

**33 x 11 x 3**  
1.5 inch Skimmer  
with 1.125 inch  
Orifice Diameter  
4 ft. weir  
ID 4.4C

**17 x 5 x 3**  
1.5 inch Skimmer  
with 0.5 inch  
Orifice Diameter  
4 ft. weir  
ID 4.3C

**22 x 6 x 3**  
1.5 inch Skimmer  
with 0.625 inch  
Orifice Diameter  
4 ft. weir  
ID 4.2C

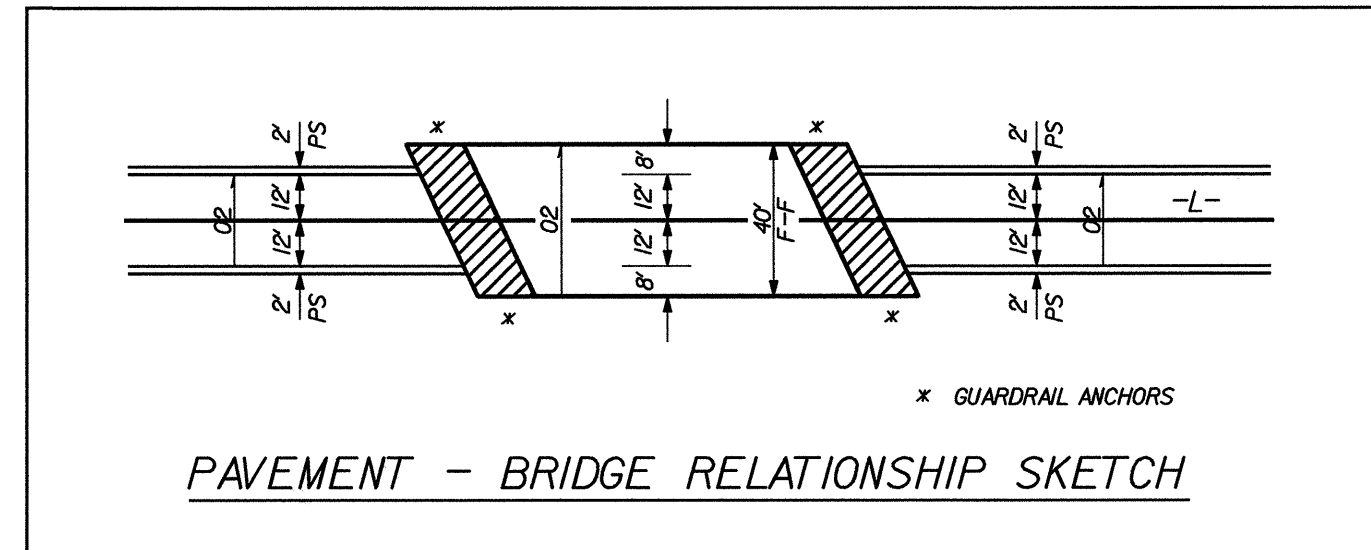
INSTALL FILTER FABRIC UNDER TEMPORARY ROCK SILT CHECK(S) TYPE A IN PERMITTED WETLANDS.



**BEGIN PROJECT B-4101**  
-L- POC STA. 17+00.00  
S 39° 31' 00.5" E

**END PROJECT B-4101**  
-L- POC STA. 26+50.00

PI Sta 17+70.44	PI Sta 27+80.37
Δ = 14° 38' 50.1" (LT)	Δ = 20° 48' 50.3" (LT)
D = 2° 02' 46.6"	D = 5° 49' 00.6"
L = 715.80'	L = 357.82'
T = 359.86'	T = 180.91'
R = 2,800.00'	R = 985.00'
SE = 0.030	SE = EXIST
RO = 8'	



**LEGEND**

	PAVED SHOULDER
	APPROACH SLAB

FOR -L- PROFILE, SEE SHEET NO. 5  
FOR DETOUR, SEE SHEET NO. 2-B