

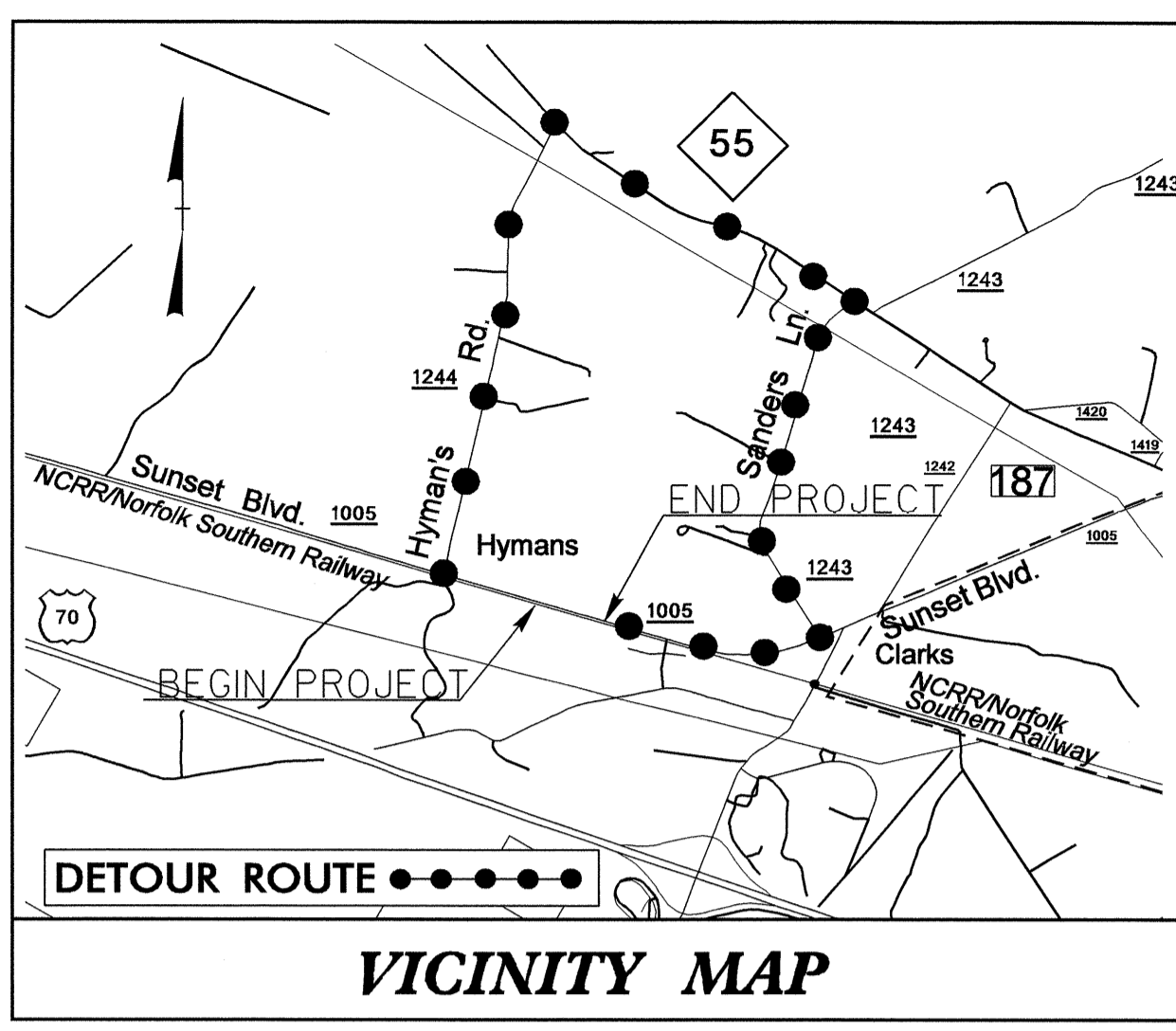
09/08/99

T.I.P. NO.	SHEET NO.
B-4085	UO-1

TIP PROJECT: B-4085

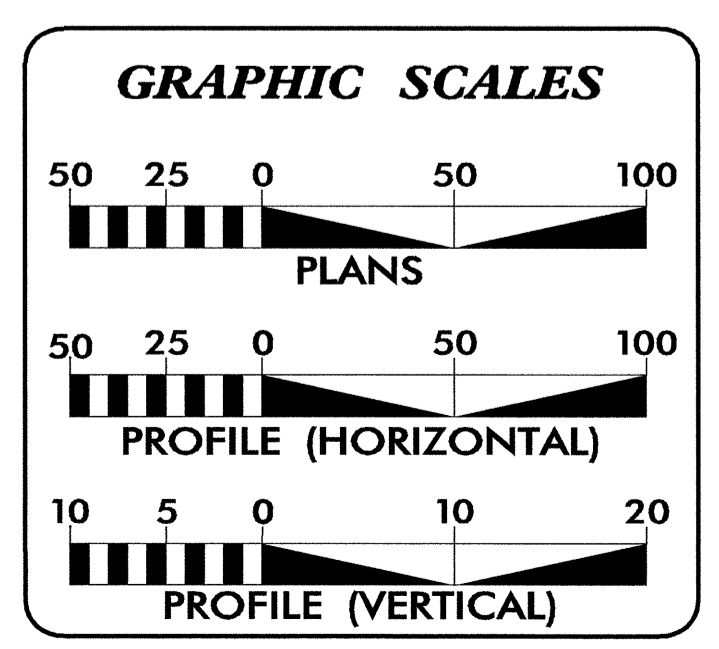
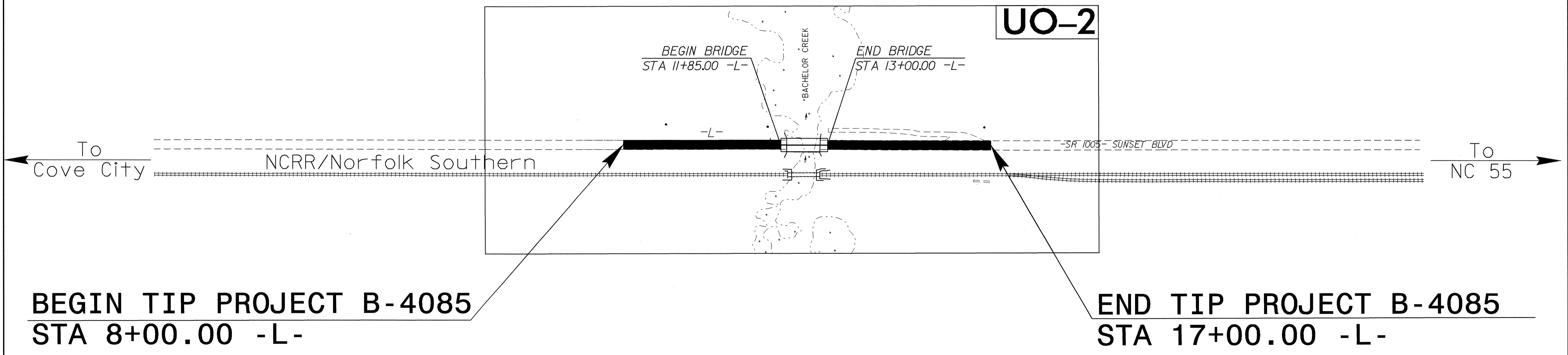
STATE OF NORTH CAROLINA
DIVISION OF HIGHWAYS

**UTILITY BY OTHERS PLANS
CRAVEN COUNTY**



LOCATION: BRIDGE NO. 112 OVER BACHELOR CREEK ON SR 1005

TYPE OF WORK: UTILITIES CONFLICTS

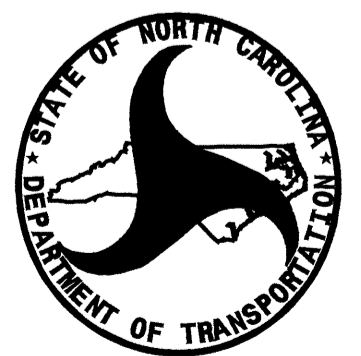


INDEX OF SHEETS

SHEET NO.	DESCRIPTION
UO-1	TITLE SHEET
UO-2	UTILITIES BY OTHERS PLAN SHEET

UTILITY OWNERS ON PROJECT

(1) EMBARQ



PREPARED IN THE OFFICE OF:
**DIVISION OF HIGHWAYS
PROJECT SERVICES
UTILITIES SECTION**

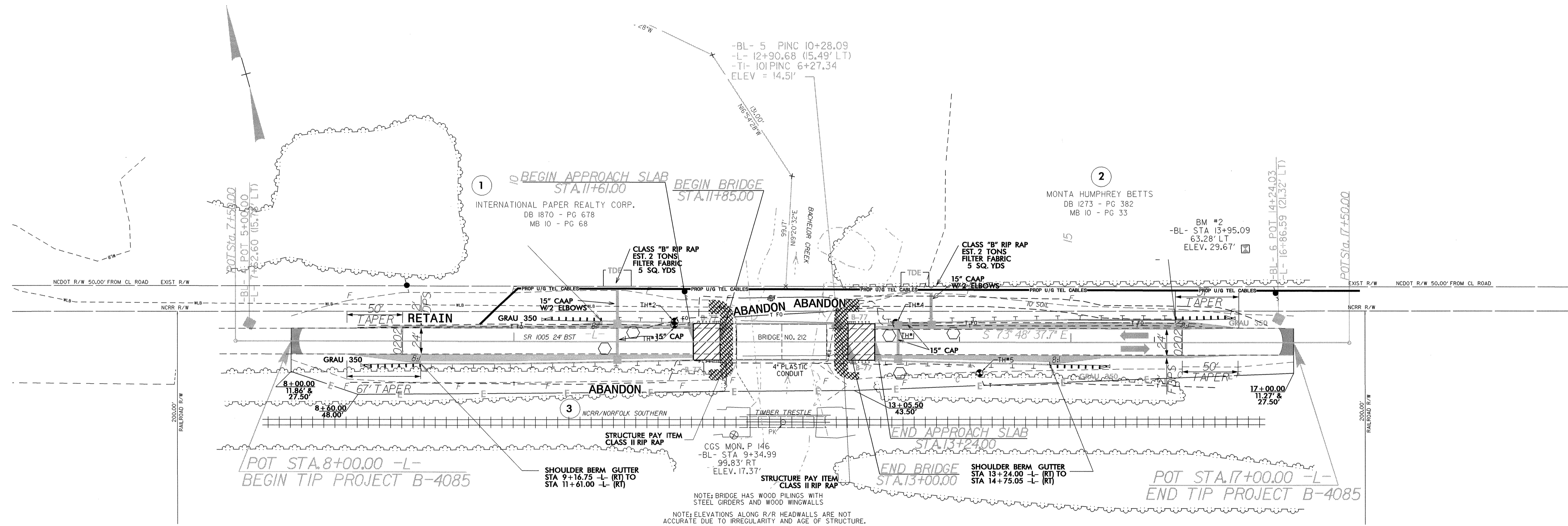
1591 MAIL SERVICES CENTER
RALEIGH NC 27699-1591
PHONE (919) 259-4128
FAX (919) 259-4119

Roger Worthington, P.E. UTILITIES SECTION ENGINEER
Carl Barclay, P.E. UTILITIES SQUAD LEADER PROJECT ENGINEER
Bo Hemphill, P.E. UTILITIES PROJECT DESIGNER

02-OCT-2007 12:08
r:\utilities\rdy\ut\proj\b4085_ut_title_uol.psh.dgn
\$\$\$\$\$USERNAME\$\$\$\$\$

UTILITIES BY OTHERS

NOTE:
ALL PROPOSED UTILITY WORK
SHOWN ON THIS SHEET WILL
BE DONE BY OTHERS



NOTE: BRIDGE HAS WOOD PILING WITH STEEL GIRDERS AND WOOD WINGWALLS
NOTE: ELEVATIONS ALONG R/R HEADWALLS ARE NOT ACCURATE DUE TO IRREGULARITY AND AGE OF STRUCTURE.

5/14/09
02-OCT-2007 09:45
I:\Utilities\Road\Project\B4085_ut_04_uc2_psh.dgn