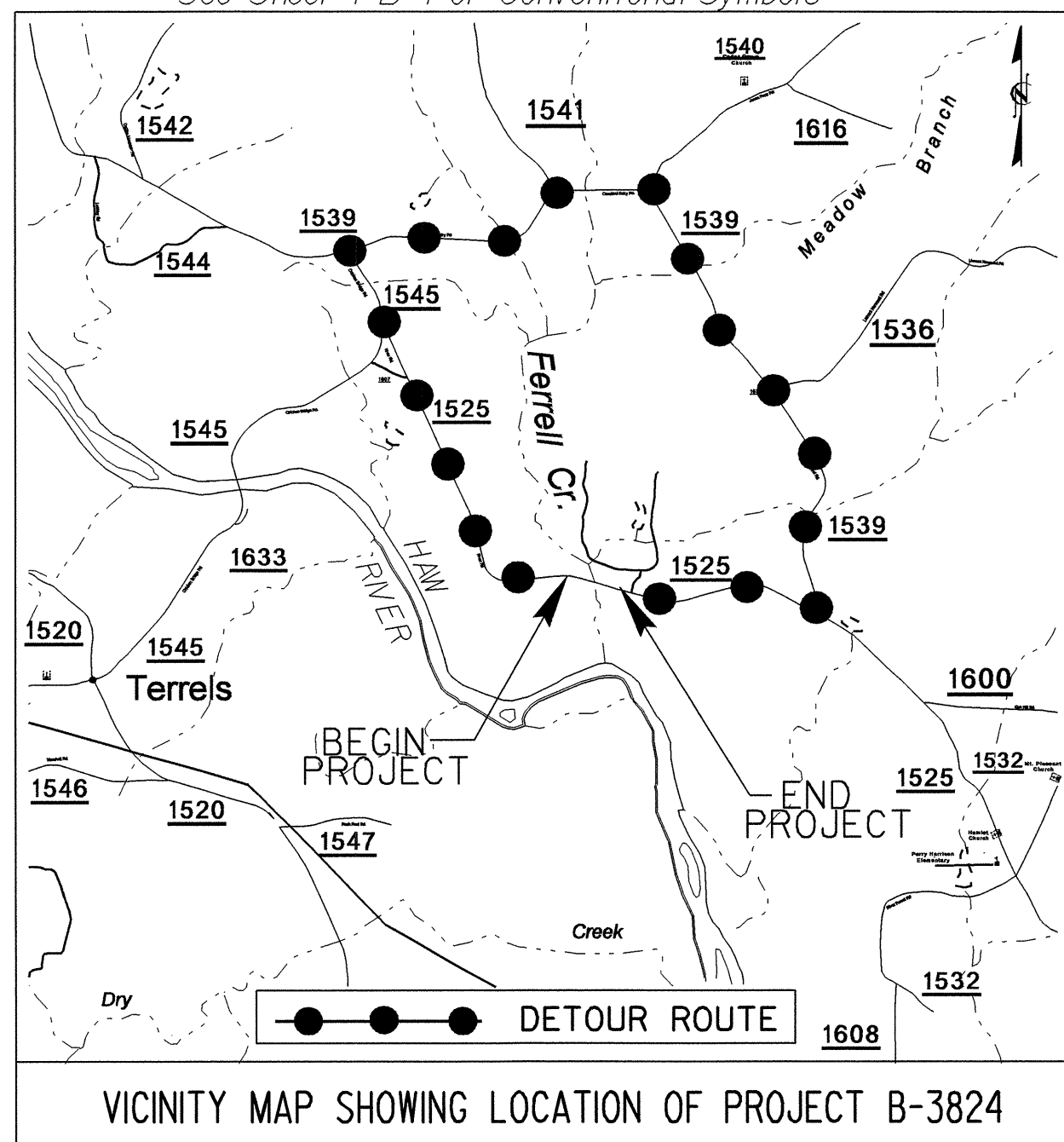


**WBS NUMBER: 33276.1.1**      **TIP PROJECT: B-3824**

See Sheet 1-A For Index of Sheets  
See Sheet 1-B For Conventional Symbols



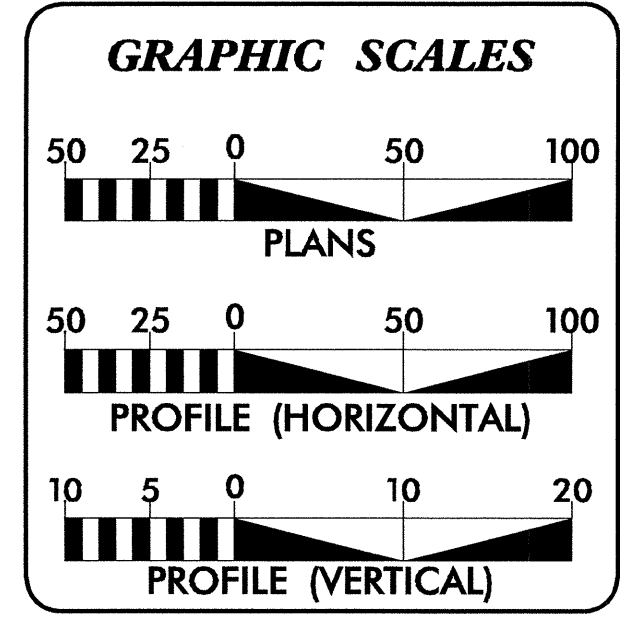
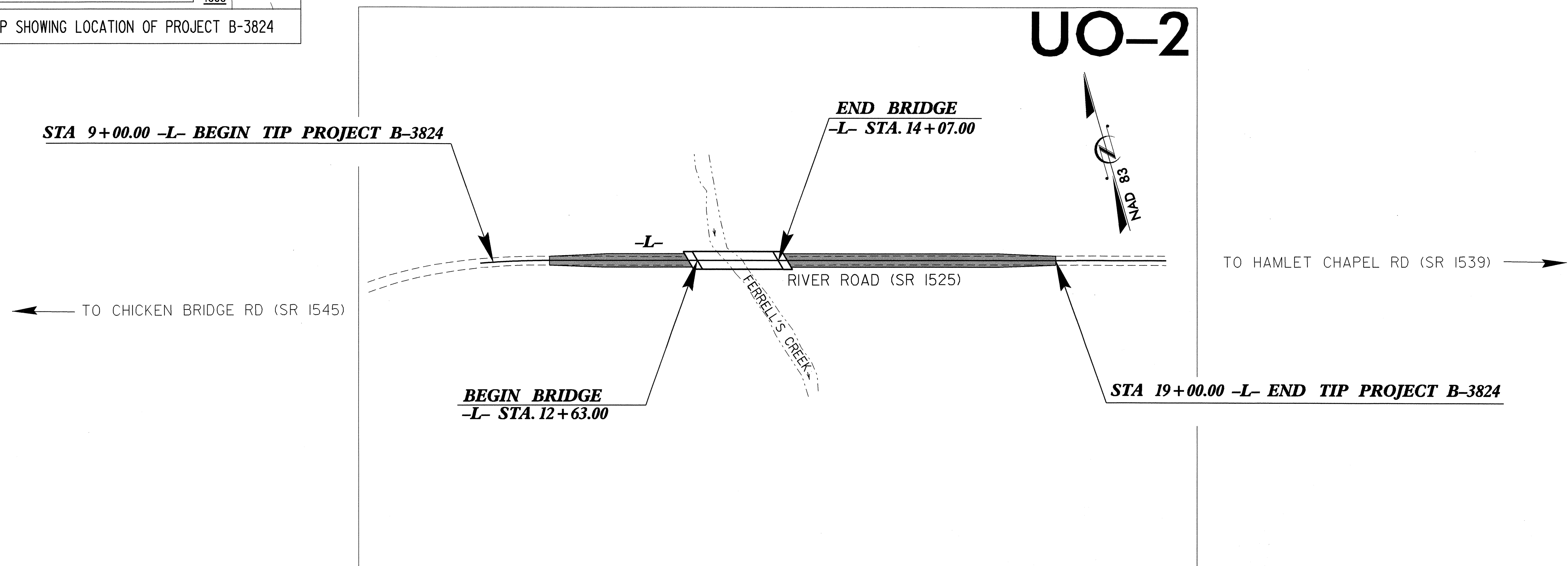
STATE OF NORTH CAROLINA  
DIVISION OF HIGHWAYS

**UTILITIES BY OTHERS PLANS  
CHATHAM COUNTY**

**LOCATION: BRIDGE 88 OVER FERRELL'S CREEK ON SR 1525**

**TYPE OF WORK: UTILITIES RELOCATION**

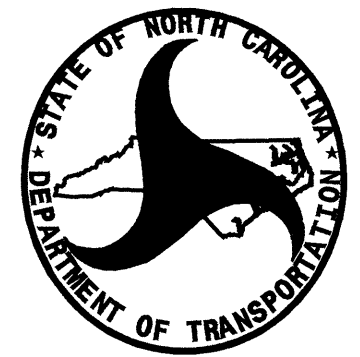
T.I.P. NO.	SHEET NO.
B-3824	UO-1



SHEET NO.	DESCRIPTION
UO-1	TITLE SHEET
UO-2	UTILITIES BY OTHERS PLAN SHEETS

**UTILITY OWNERS ON PROJECT**

- (1) Progress Energy
- (2) BellSouth



PREPARED IN THE OFFICE OF:  
**DIVISION OF HIGHWAYS  
PROJECT SERVICES  
UTILITY SECTION**

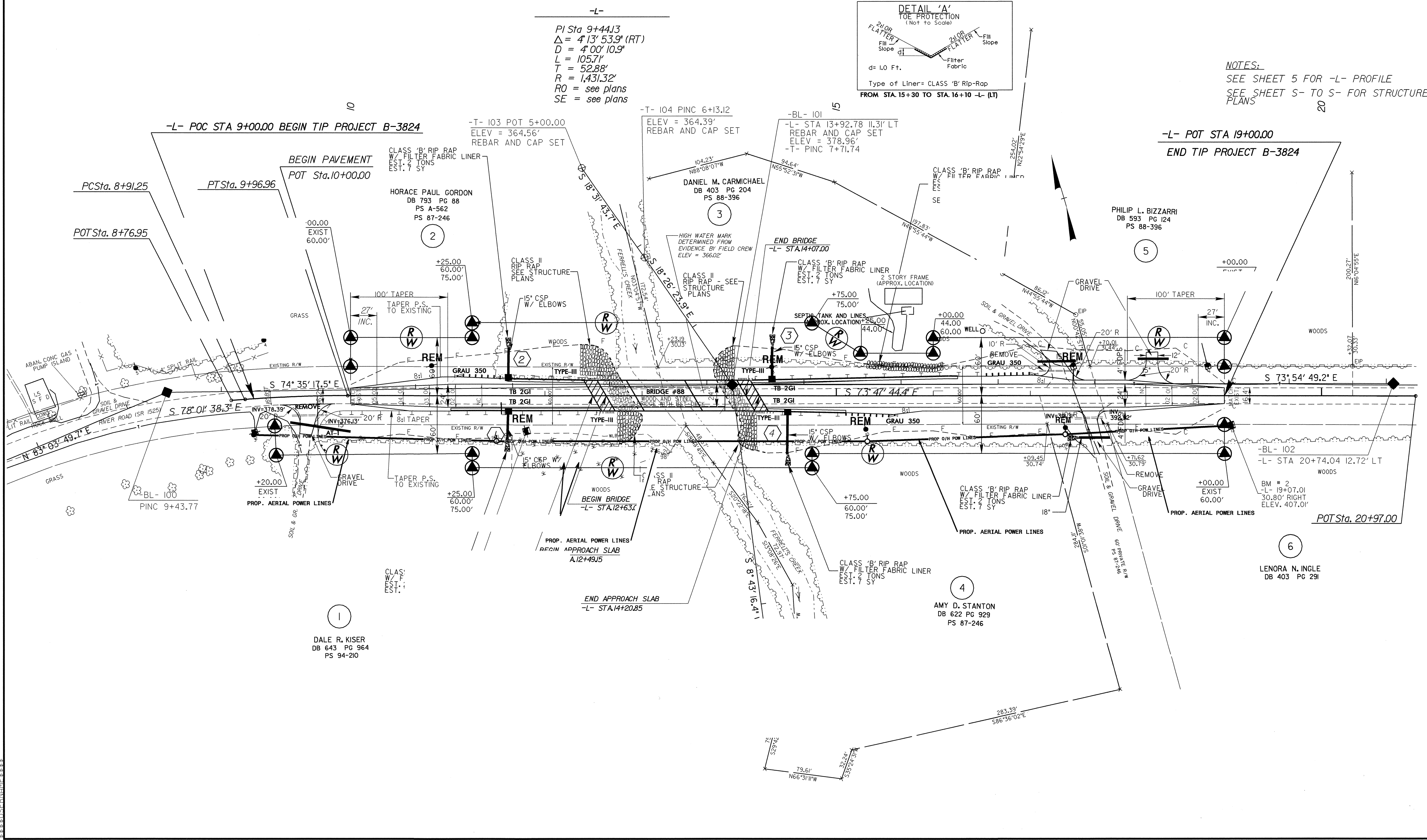
1591 MAIL SERVICES CENTER  
RALEIGH NC 27699-1591  
PHONE (919) 250-4128  
FAX (919) 250-4119

**Roger Worthington, P.E.** UTILITIES SECTION ENGINEER  
**Corey Bousquet, P.E.** UTILITIES SQUAD LEADER PROJECT ENGINEER  
**Stephanie Athey** UTILITIES PROJECT DESIGNER

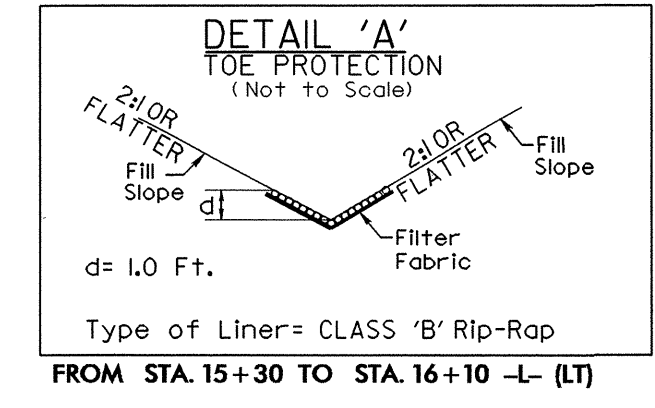
**UTILITIES BY OTHERS**

**NOTE:**  
 ALL PROPOSED UTILITY WORK  
 SHOWN ON THIS SHEET WILL  
 BE DONE BY OTHERS

**\*\* Design Exception required for the vertical curve "K" and the stopping sight distance.**



-L-  
 PI Sta 9+44.13  
 $\Delta = 4' 13'' 53.9'' (RT)$   
 $D = 4' 00'' 10.9''$   
 $L = 105.71'$   
 $T = 52.88'$   
 $R = 1,431.32'$   
 $RO = \text{see plans}$   
 $SE = \text{see plans}$



**NOTES:**  
 SEE SHEET 5 FOR -L- PROFILE  
 SEE SHEET S- TO S- FOR STRUCTURE  
 PLANS

5/14/99  
 17-OCT-2007 12:03  
 s:\rdy\ut\p\p\B-3824-000\by\_others\_sht2\_psh.dgn