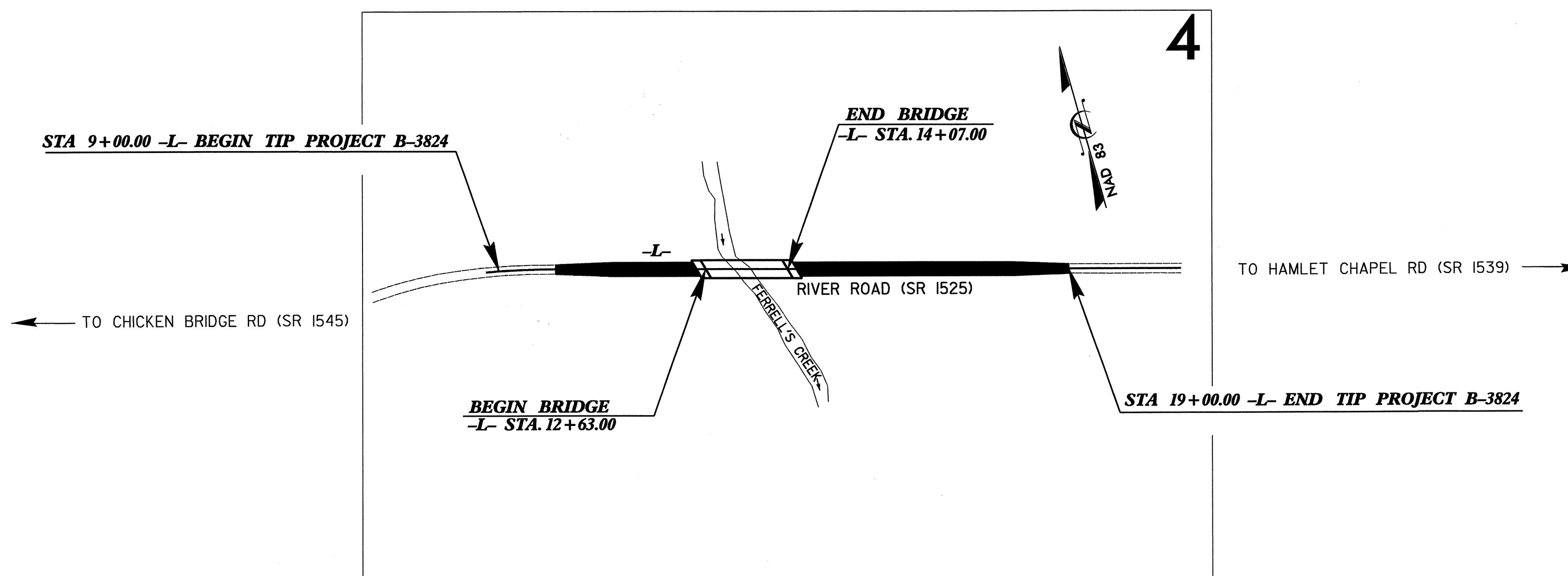


**TIP PROJECT: B-3824**

STATE OF NORTH CAROLINA  
 DIVISION OF HIGHWAYS  
 PLAN FOR PROPOSED  
 HIGHWAY EROSION CONTROL

**CHATHAM COUNTY**

**LOCATION: BRIDGE 88 OVER FERRELL'S CREEK ON SR 1525**  
**TYPE OF WORK: GRADING, PAVING, DRAINAGE, AND STRUCTURE**



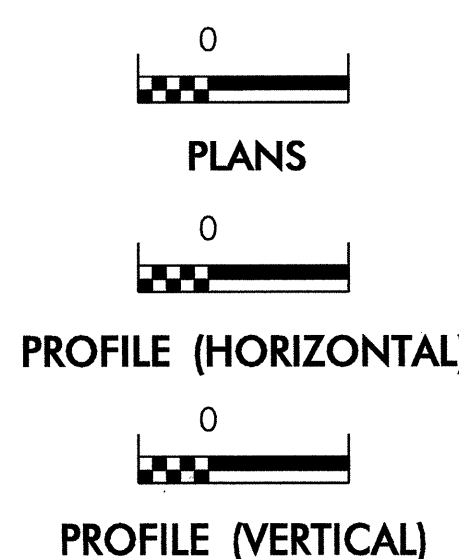
STATE	STATE PROJECT REFERENCE NO.	SHEET NO.	TOTAL SHEETS
N.C.	B-3824	EC-1	
STATE PROJ. NO.	F.A. PROJ. NO.	DESCRIPTION	

**EROSION AND SEDIMENT CONTROL MEASURES**

Std. #	Description	Symbol
1630.03	Streambank Reforestation.....	
1630.05	Temporary Silt Ditch.....	
1605.01	Temporary Diversion.....	
1606.01	Temporary Silt Fence.....	
1622.01	Special Sediment Control Fence.....	
1622.01	Temporary Berms and Slope Drains.....	
1630.01	Riser Basin.....	
1630.02	Silt Basin Type B.....	
1633.01	Temporary Rock Silt Check Type-A.....	
1633.01	Temporary Rock Silt Check Type-B.....	
1634.01	Temporary Rock Sediment Dam Type-A.....	
1634.02	Temporary Rock Sediment Dam Type-B.....	
1635.01	Rock Pipe Inlet Sediment Trap Type-A.....	
1635.02	Rock Pipe Inlet Sediment Trap Type-B.....	
1630.04	Stilling Basin.....	
1632.01	Rock Inlet Sediment Trap: Type A.....	
1632.02	Type B.....	
1632.03	Type C.....	
	Skimmer Basin.....	
	Tiered Skimmer Basin.....	

**THIS PROJECT CONTAINS  
 EROSION CONTROL PLANS  
 FOR CLEARING AND  
 GRUBBING PHASE OF  
 CONSTRUCTION.**

**GRAPHIC SCALE**



ROADSIDE ENVIRONMENTAL UNIT  
 DIVISION OF HIGHWAYS  
 STATE OF NORTH CAROLINA

Prepared In the Office of:  
**ROADSIDE ENVIRONMENTAL UNIT**  
 1 South Wilmington St.  
 Raleigh, NC 27611  
**2006 STANDARD SPECIFICATIONS**

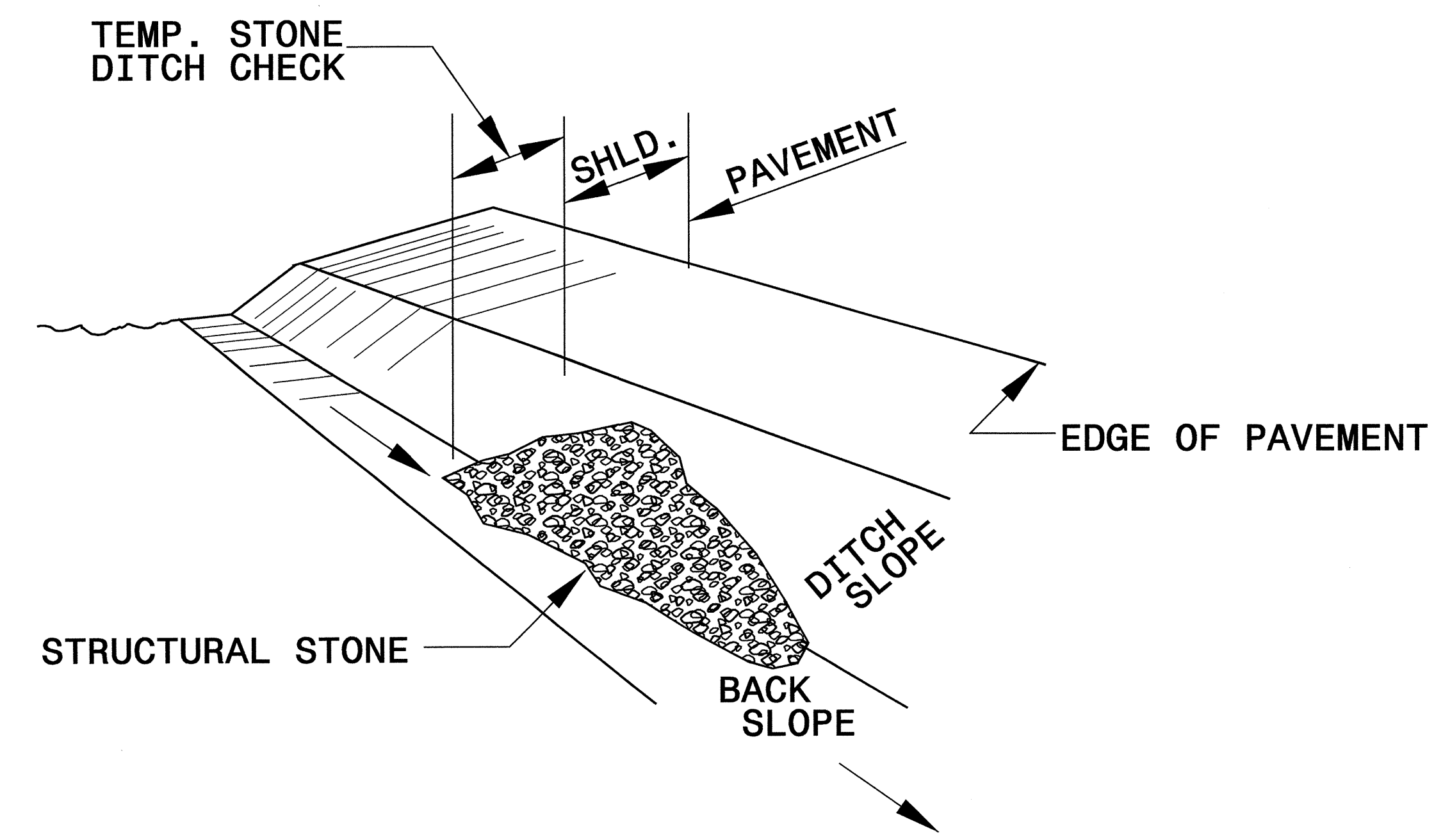
**Roadway Standard Drawings**

The following roadway english standards as appear in "Roadway Standard Drawings"- Roadway Design Unit - N. C. Department of Transportation - Raleigh, N. C., dated July 18, 2006 and the latest revision thereto are applicable to this project and by reference hereby are considered a part of these plans.

1605.01	Temporary Silt Fence	1630.06	Special Stilling Basin
1607.01	Gravel Construction Entrance	1632.03	Rock Inlet Sediment Trap Type C
1622.01	Temporary Berms and Slope Drains	1633.01	Temporary Rock Silt Check Type A
1630.02	Silt Basin Type B	1634.02	Temporary Rock Sediment Dam Type B
1630.03	Temporary Silt Ditch		

PROJECT REFERENCE NO. <i>B-3824</i>	SHEET NO. <i>EC-2</i>
RW SHEET NO.	
ROADWAY DESIGN ENGINEER	HYDRAULICS ENGINEER

# TEMPORARY ROCK SILT CHECK TYPE 'B' DETAIL

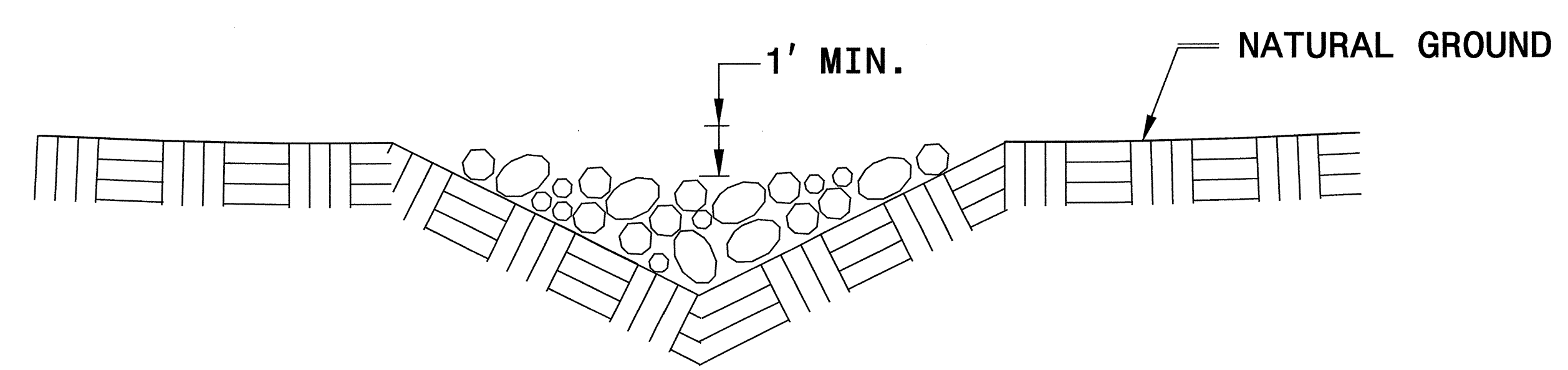


**ISOMETRIC VIEW**

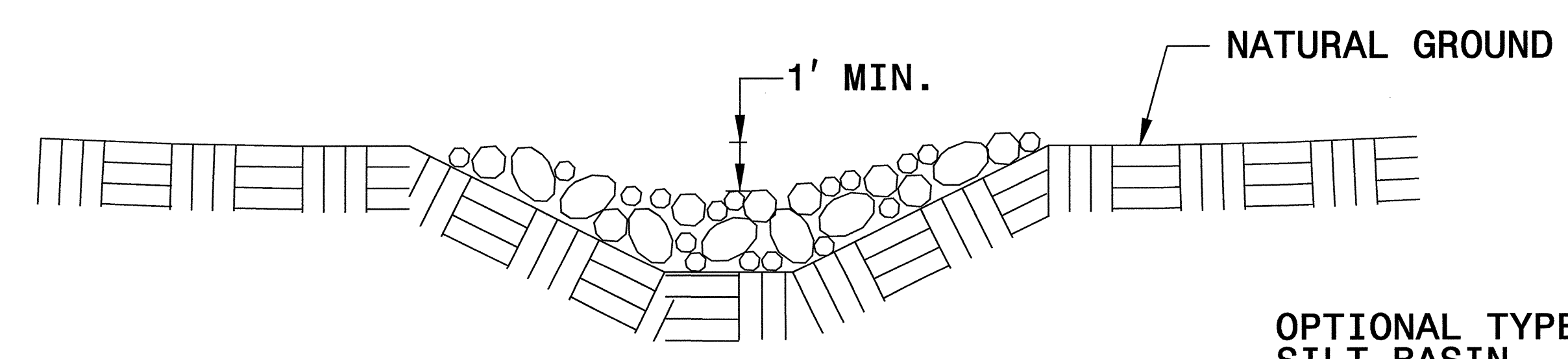
**NOTES:**

USE CLASS 'B' EROSION CONTROL STONE FOR STRUCTURAL STONE.

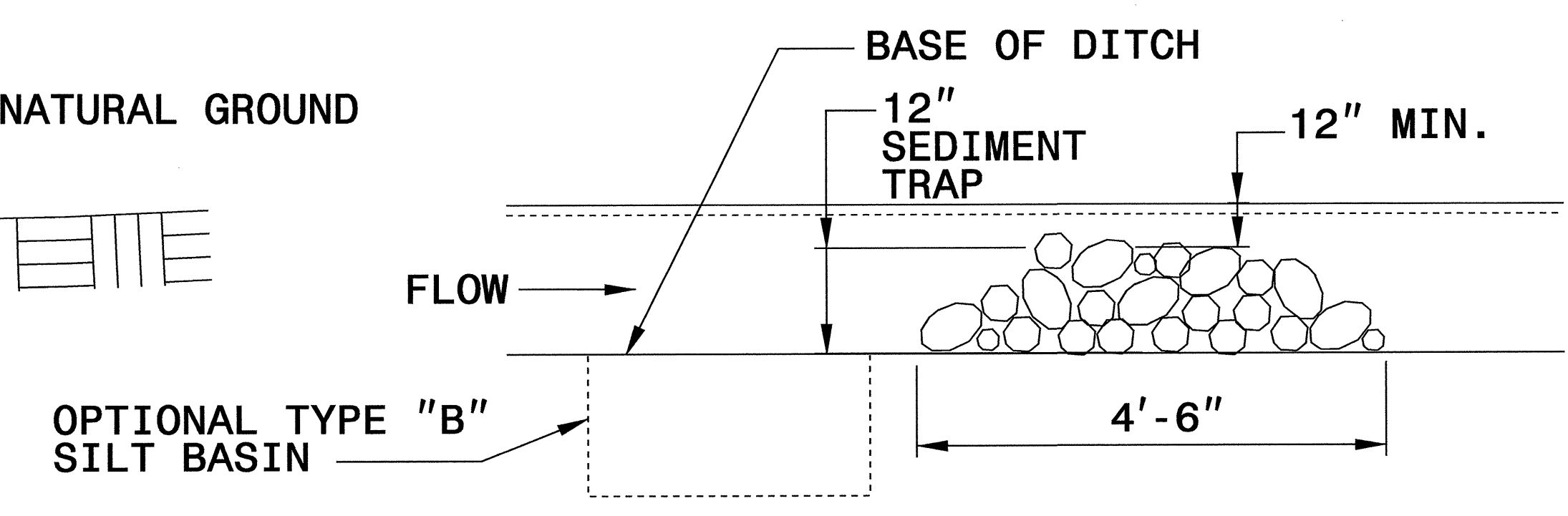
THE ENGINEER MAY DIRECT THE OPTION OF CLASS "A" STONE FOR SITES HAVING LESS THAN ONE (1) ACRE DRAINAGE AREA AND A DITCH GRADE LESS THAN 3%.



**CROSS SECTION VEE DITCH**



**CROSS SECTION TRAPEZOIDAL DITCH**

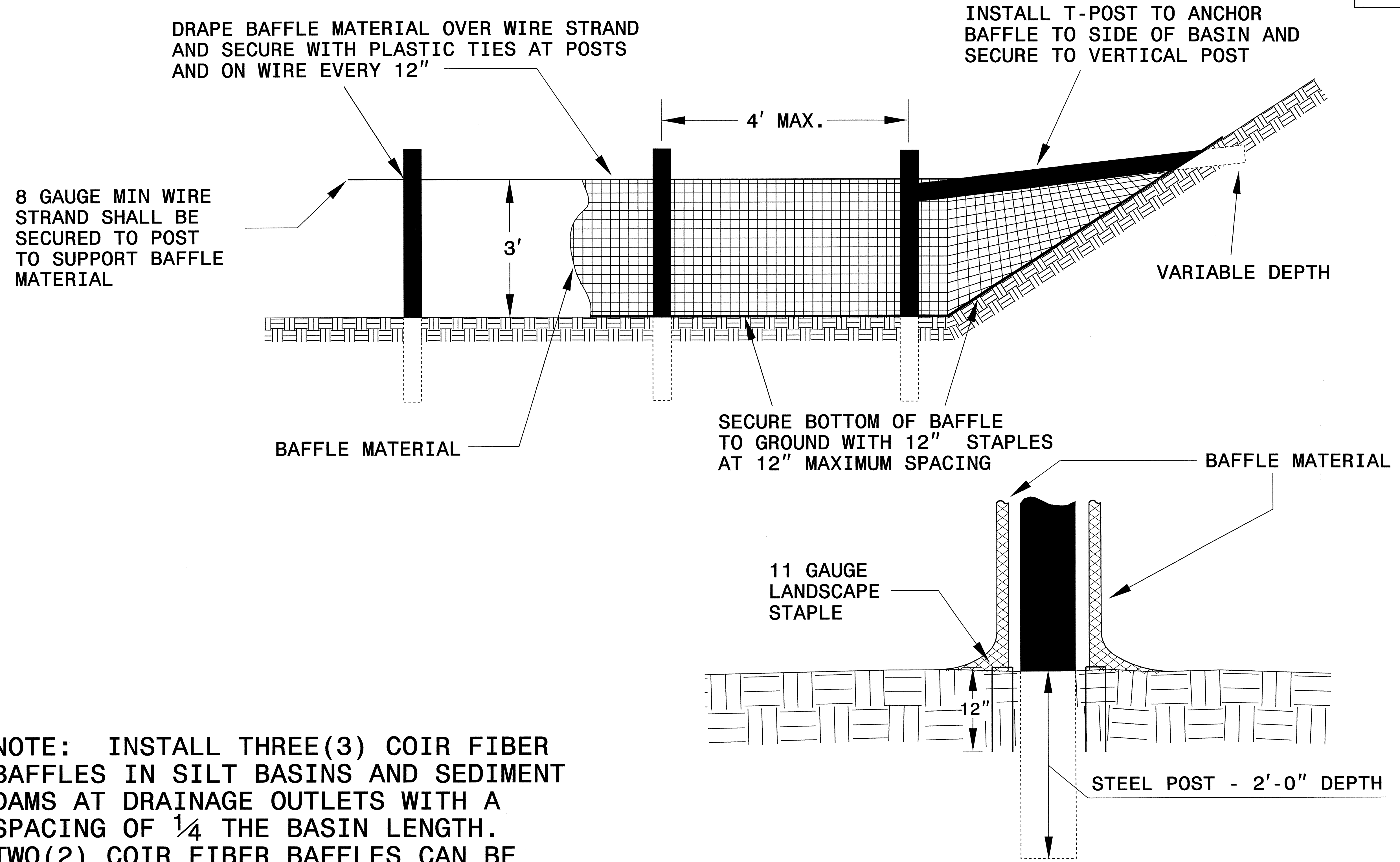


**ELEVATION VIEW**

OPTIONAL TYPE "B" SILT BASIN

PROJECT REFERENCE NO. B-3824	SHEET NO. EC-2A
RW SHEET NO.	
ROADWAY DESIGN ENGINEER	HYDRAULICS ENGINEER

# COIR FIBER BAFFLE DETAIL

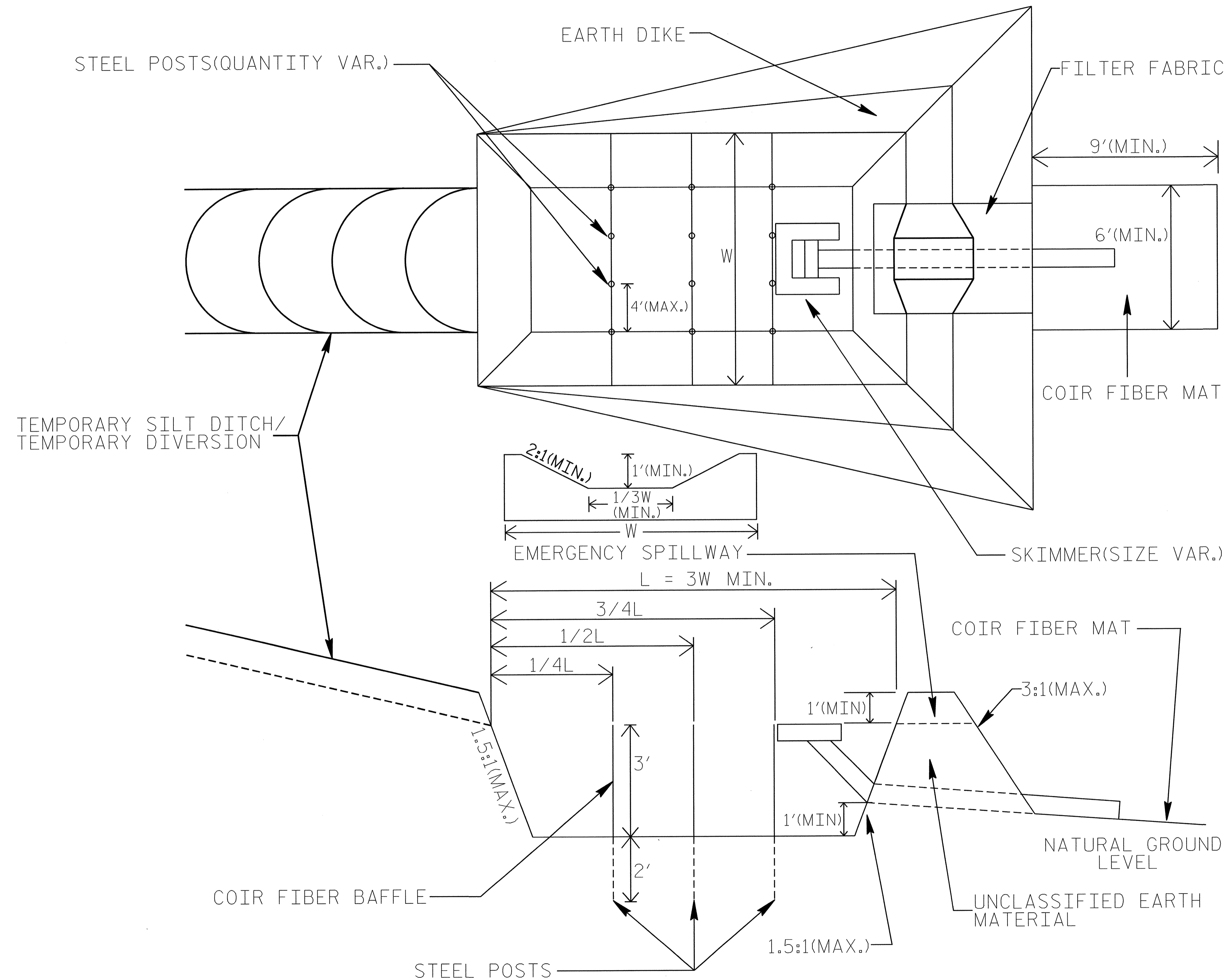


NOTE: INSTALL THREE(3) COIR FIBER BAFFLES IN SILT BASINS AND SEDIMENT DAMS AT DRAINAGE OUTLETS WITH A SPACING OF  $\frac{1}{4}$  THE BASIN LENGTH. TWO(2) COIR FIBER BAFFLES CAN BE INSTALLED IN SILT BASINS AND DAMS LESS THAN 20 FT. IN LENGTH WITH A SPACING OF  $\frac{1}{3}$  THE BASIN LENGTH.

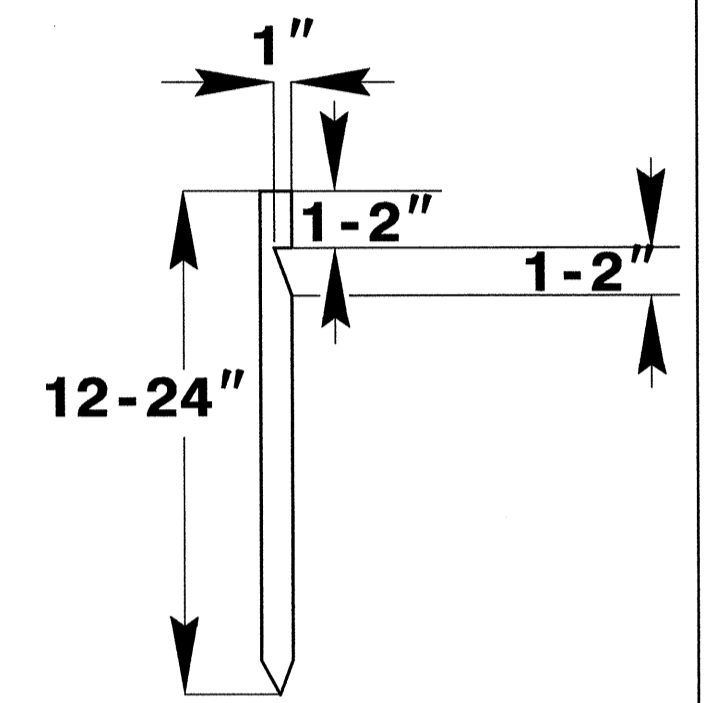
BAFFLE MATERIAL SHALL BE SECURED TO THE BOTTOM AND SIDES OF BASIN USING 12" LANDSCAPE STAPLES

# SKIMMER BASIN WITH BAFFLES DETAIL

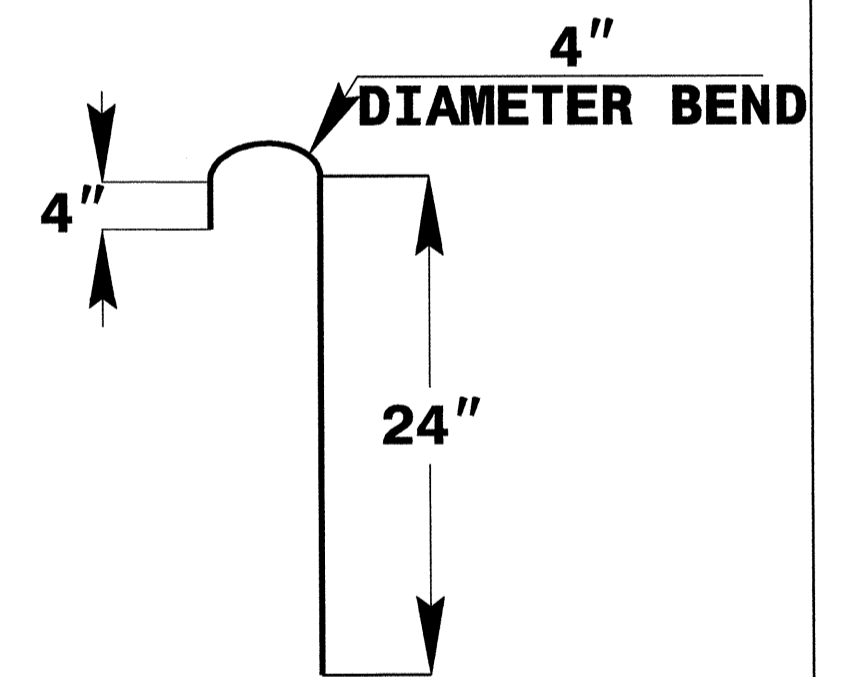
PROJECT REFERENCE NO. B-3824	SHEET NO. EC-2B
R/W SHEET NO.	
ROADWAY DESIGN ENGINEER	HYDRAULICS ENGINEER



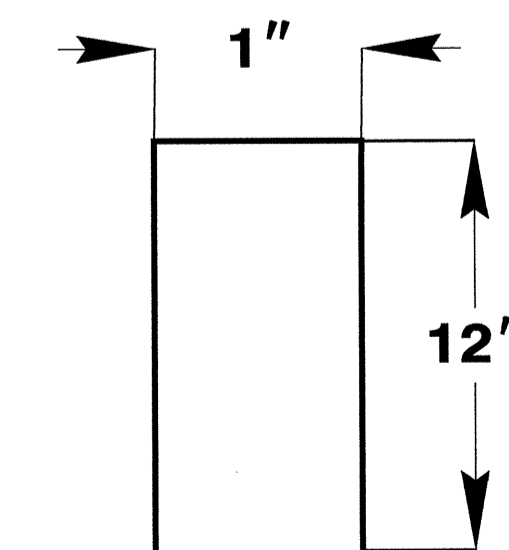
**2" x 2" (nominal)  
WOODEN STAKE**



**#10 STEEL  
REINFORCEMENT BAR**



**1" (nominal)  
STAPLE**



**COIR FIBER MAT  
ANCHOR OPTIONS**



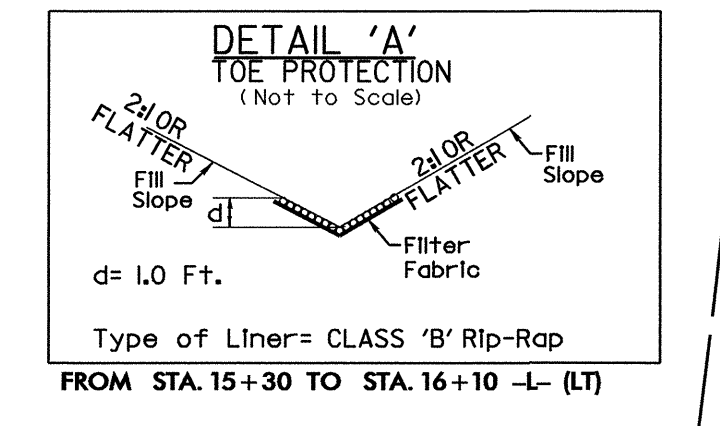
PROJECT REFERENCE NO. B-3824	SHEET NO. EC-4/CONST.4
RW SHEET NO.	
ROADWAY DESIGN ENGINEER	HYDRAULICS ENGINEER

NOTE:  
UTILIZE TEMPORARY ROCK SILT CHECK TYPE - A, SPECIAL STILLING BASIN, AND SKIMMER BASIN WITH BAFFLES AS STILLING BASIN WHERE APPLICABLE.

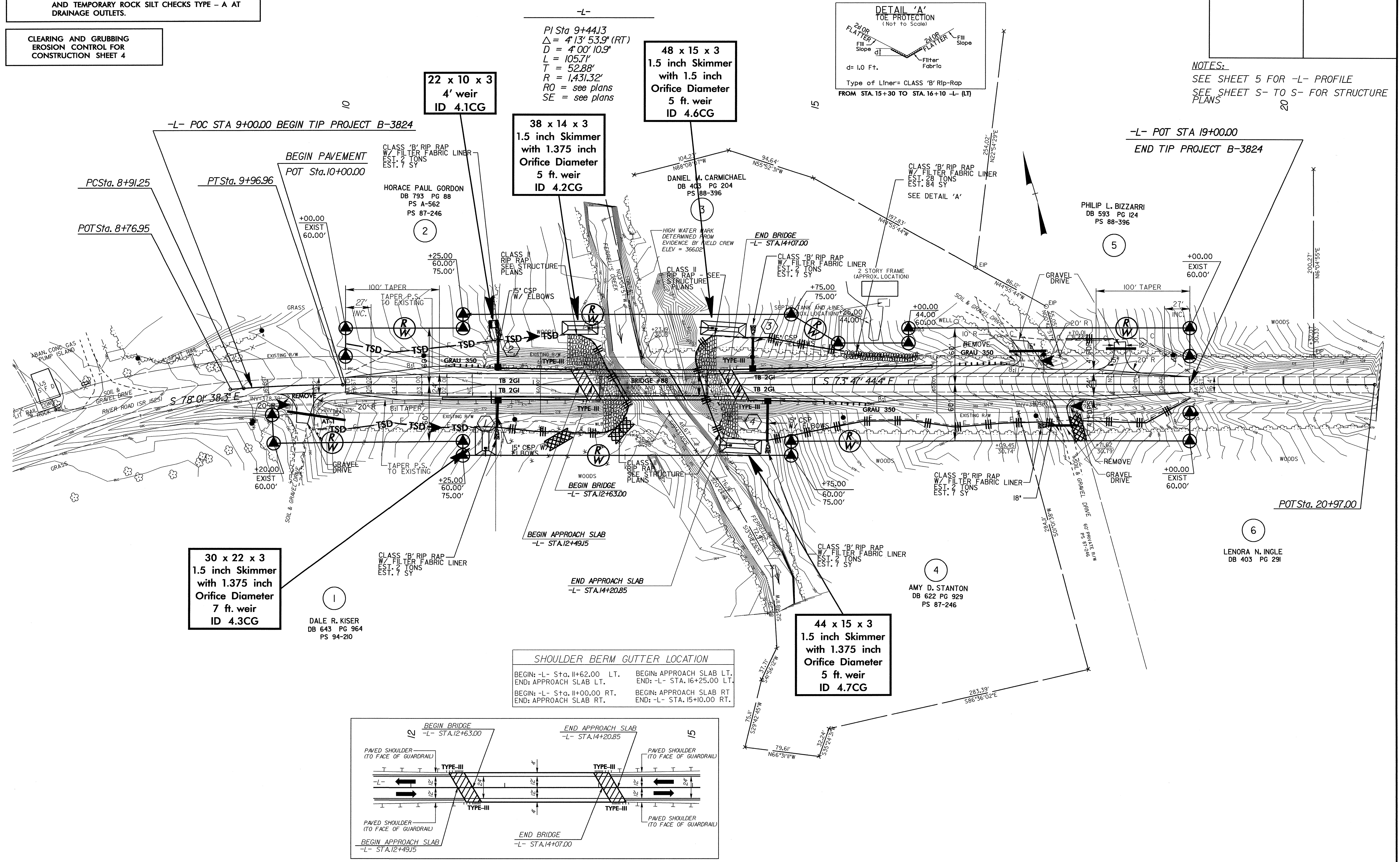
NOTE:  
PLACE TEMPORARY ROCK SEDIMENT DAMS TYPE - B AND TEMPORARY ROCK SILT CHECKS TYPE - A AT DRAINAGE OUTLETS.

CLEARING AND GRUBBING EROSION CONTROL FOR CONSTRUCTION SHEET 4

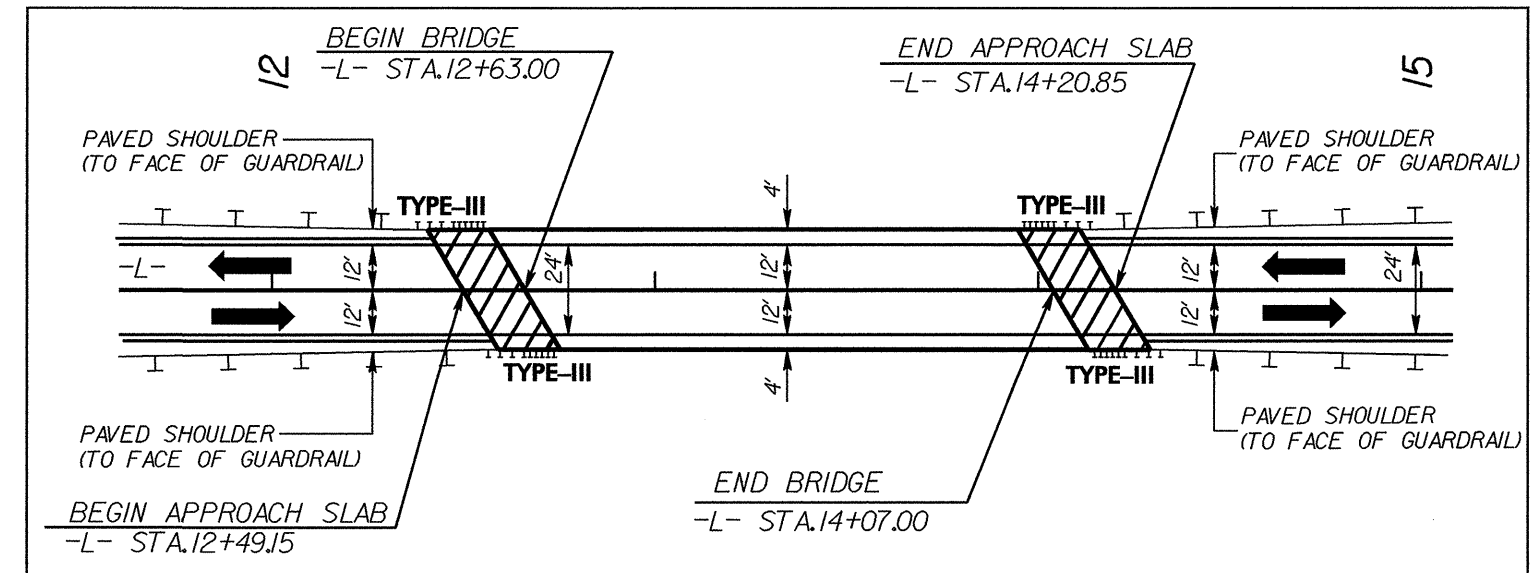
\*\* Design Exception required for the vertical curve "K" and the stopping sight distance.



NOTES:  
SEE SHEET 5 FOR -L- PROFILE  
SEE SHEET S- TO S- FOR STRUCTURE PLANS



SHOULDER BERM GUTTER LOCATION	
BEGIN: -L- Sta. 11+62.00 LT.	BEGIN: APPROACH SLAB LT.
END: APPROACH SLAB LT.	END: -L- STA. 16+25.00 LT.
BEGIN: -L- Sta. 11+00.00 RT.	BEGIN: APPROACH SLAB RT.
END: APPROACH SLAB RT.	END: -L- STA. 15+10.00 RT.



SKETCH SHOWING RELATIONSHIP OF BRIDGE TO PAVEMENT AND SHOULDERS

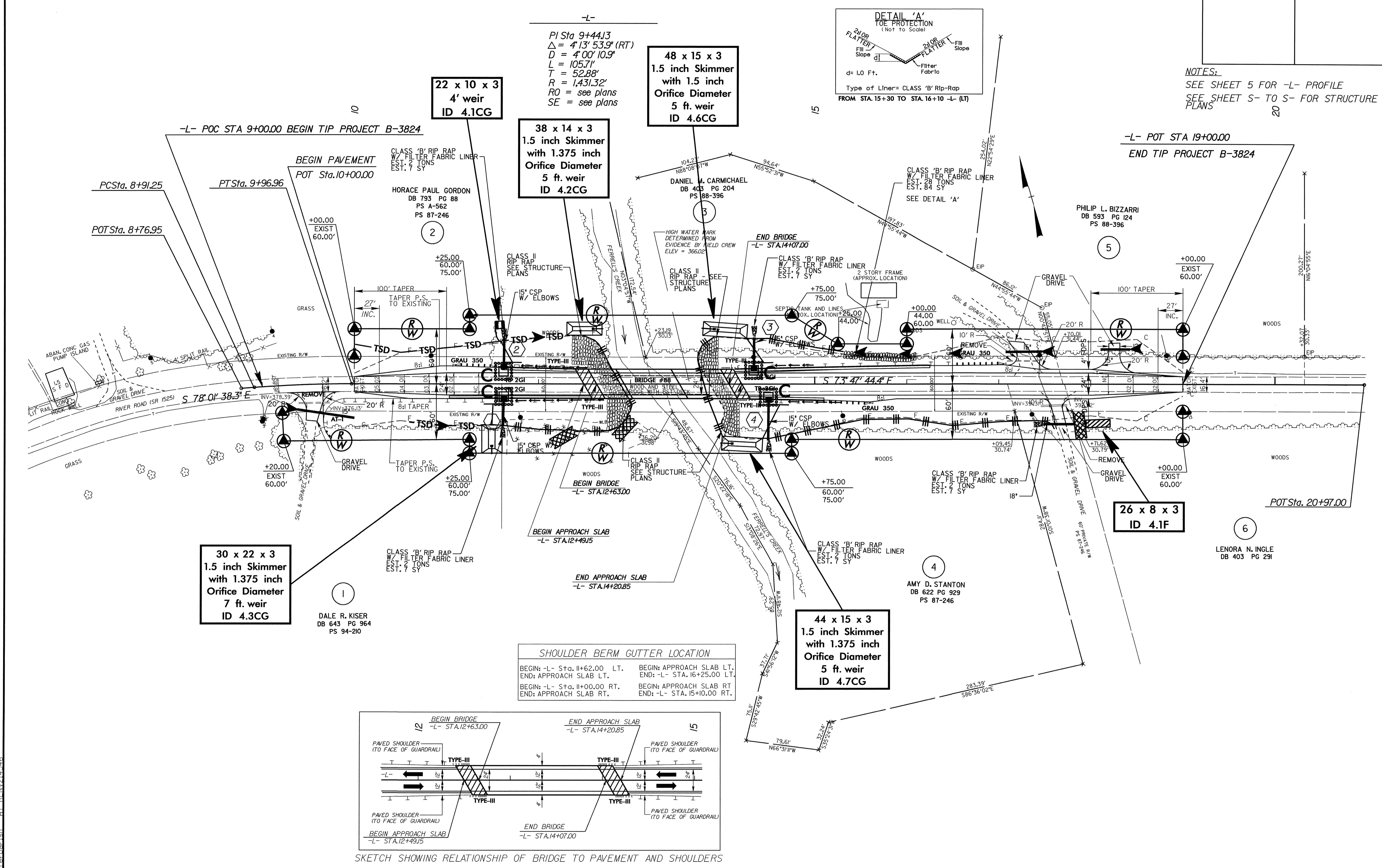
08-OCT-2007 14:31  
c:\buppro\ecsb\design\3824\ec\_psh\_04.dgn  
lenner\ecsb

NOTE: UTILIZE TEMPORARY ROCK SILT CHECK TYPE - A, SPECIAL STILLING BASIN, AND SKIMMER BASIN WITH BAFFLES AS STILLING BASIN WHERE APPLICABLE.

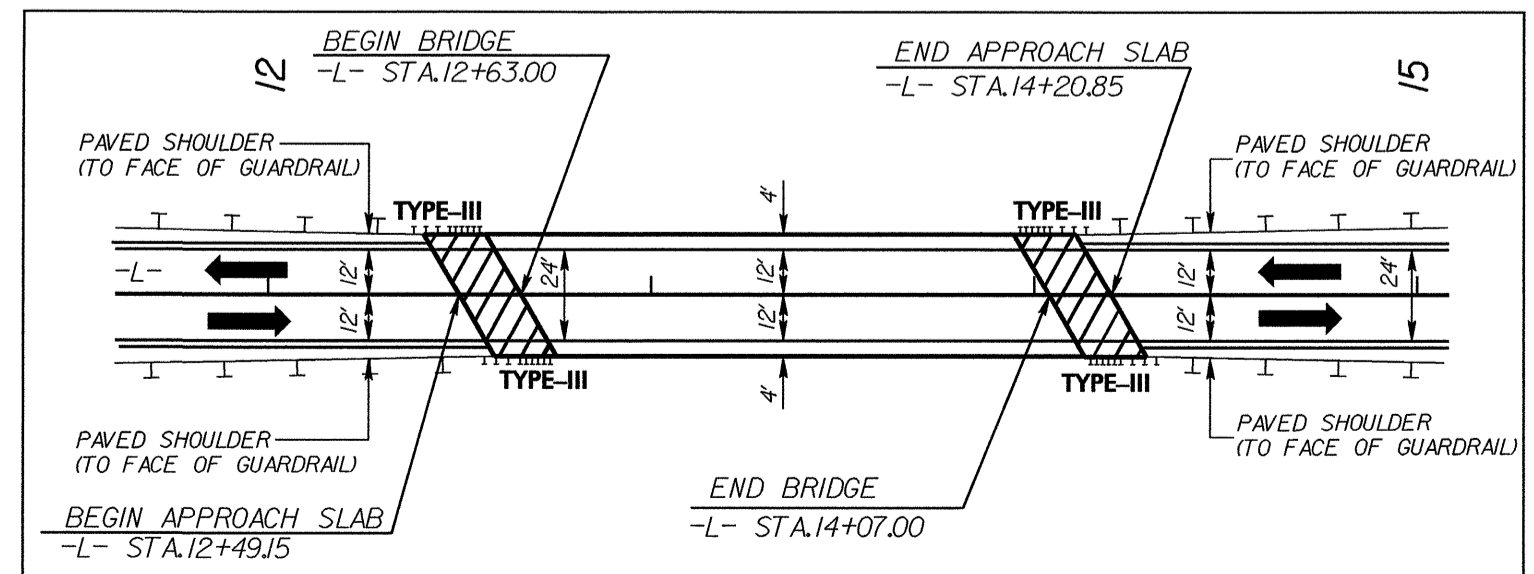
\*\* Design Exception required for the vertical curve "K" and the stopping sight distance.

PROJECT REFERENCE NO. B-3824	SHEET NO. EC-5/CONST.4
RW SHEET NO.	
ROADWAY DESIGN ENGINEER	HYDRAULICS ENGINEER

NOTES:  
SEE SHEET 5 FOR -L- PROFILE  
SEE SHEET S- TO S- FOR STRUCTURE PLANS



SHOULDER BERM GUTTER LOCATION	
BEGIN: -L- Sta. 11+62.00 LT.	BEGIN: APPROACH SLAB LT.
END: APPROACH SLAB LT.	END: -L- STA. 16+25.00 LT.
BEGIN: -L- Sta. 11+00.00 RT.	BEGIN: APPROACH SLAB RT.
END: APPROACH SLAB RT.	END: -L- STA. 15+10.00 RT.



SKETCH SHOWING RELATIONSHIP OF BRIDGE TO PAVEMENT AND SHOULDERS

08-OCT-2007 14:29 g:\tippro\projects\b3824\environmental\design\b3824.ec.psh\_04.dgn