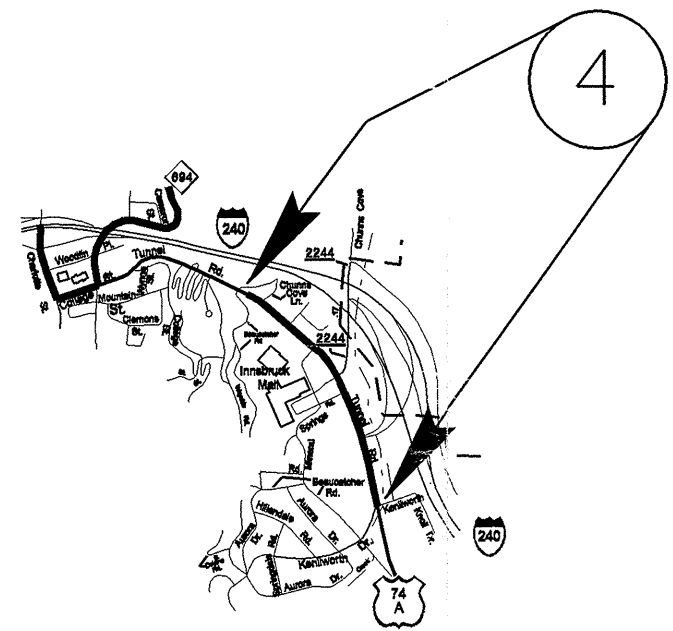
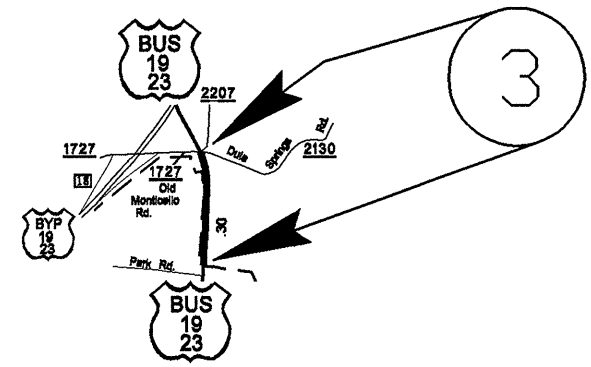
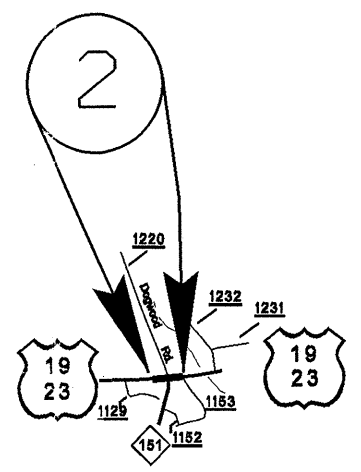
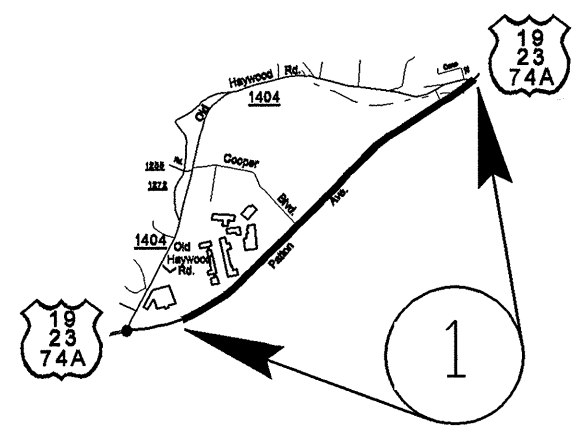


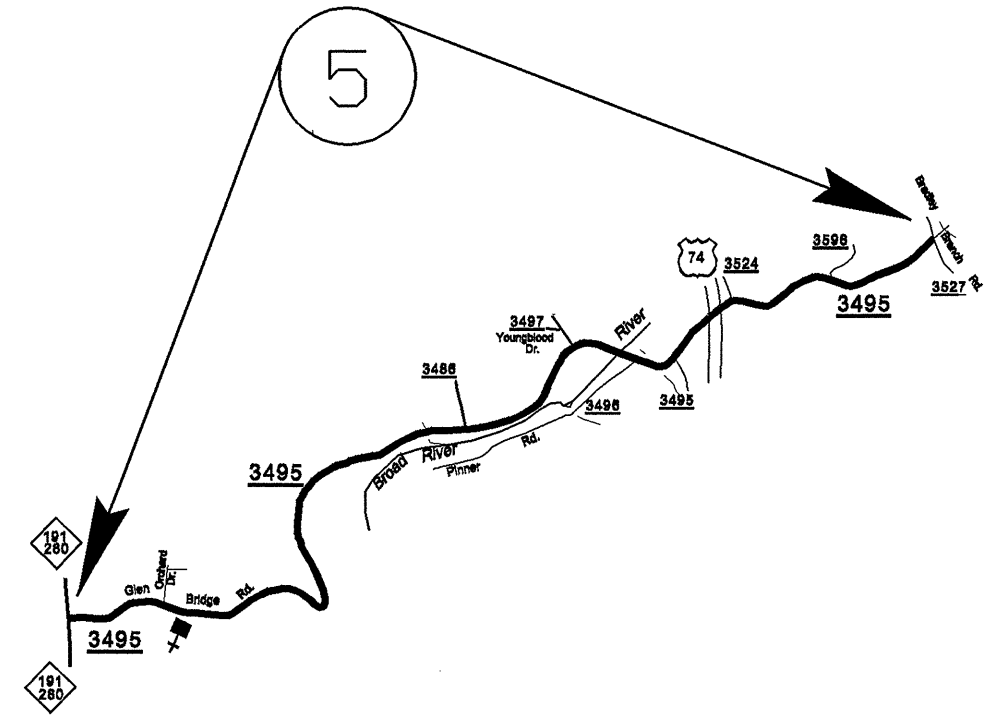
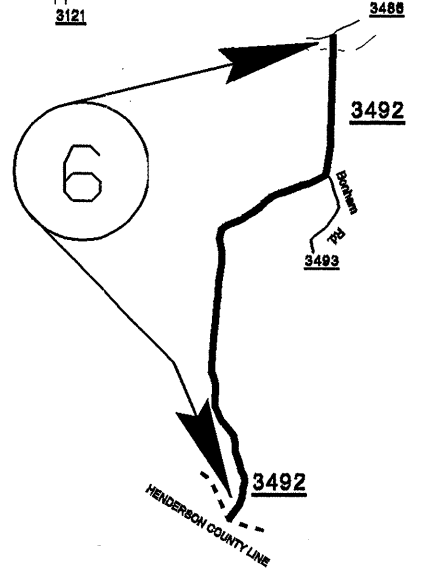
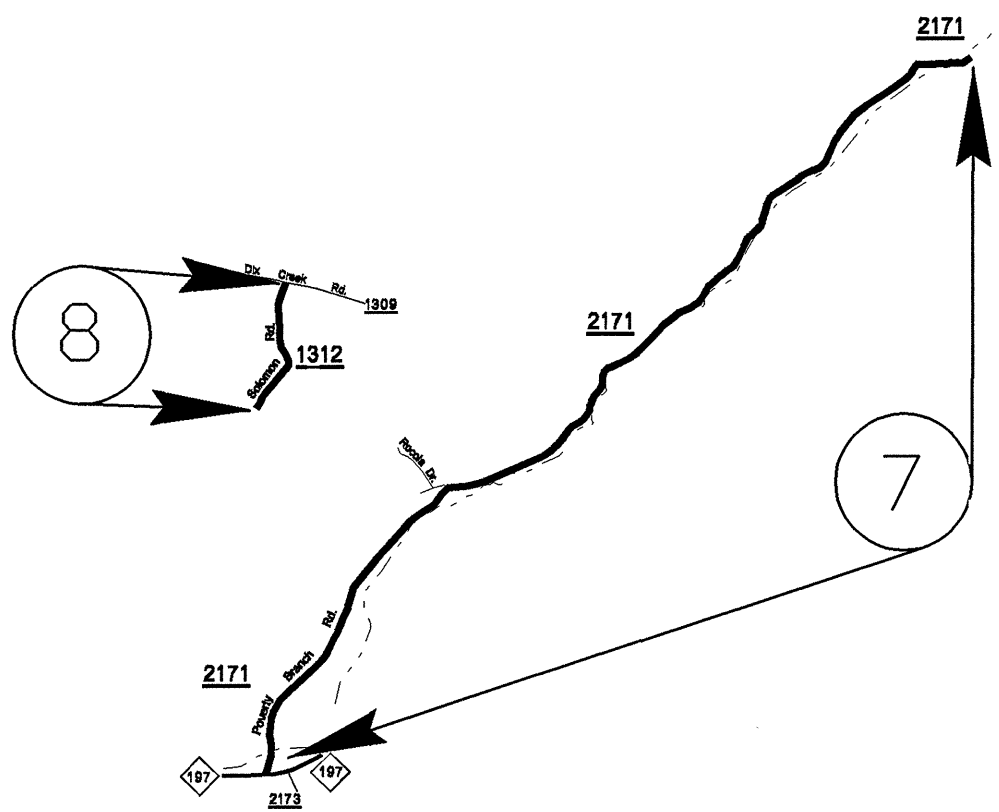
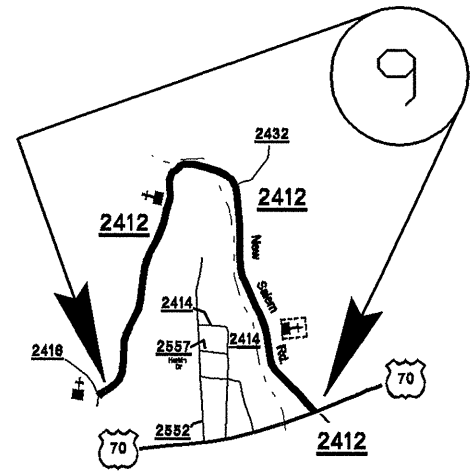
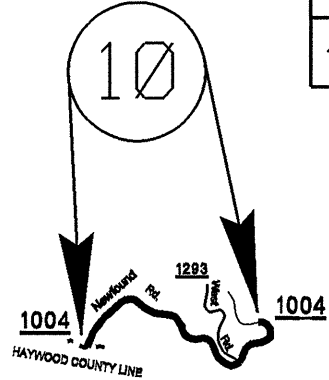
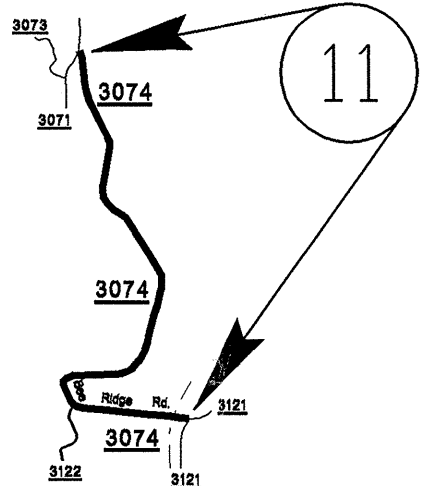
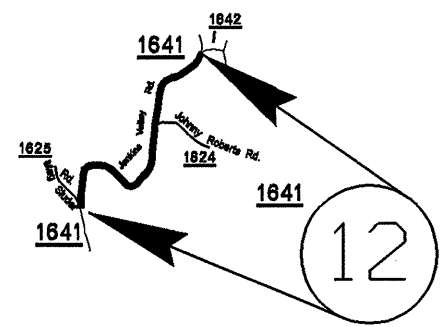
PROJECT NO.	SHEET NO.	TOTAL SHEETS
13CR.10111.7 , 13CR.20111.5	1	

C201983



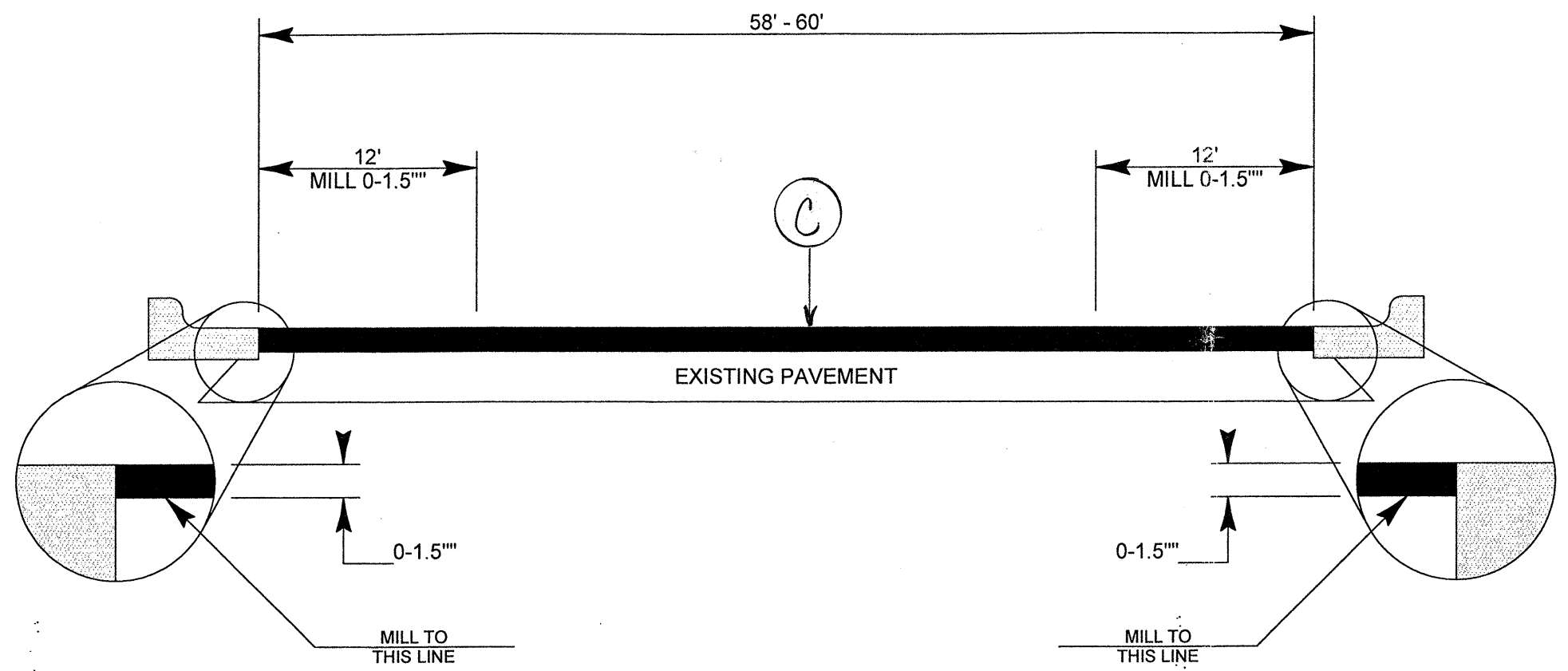
BUNCOMBE COUNTY

PROJECT NO.	SHEET NO.	TOTAL SHEETS
13CR.10111.7, 13CR.20111.5	2	

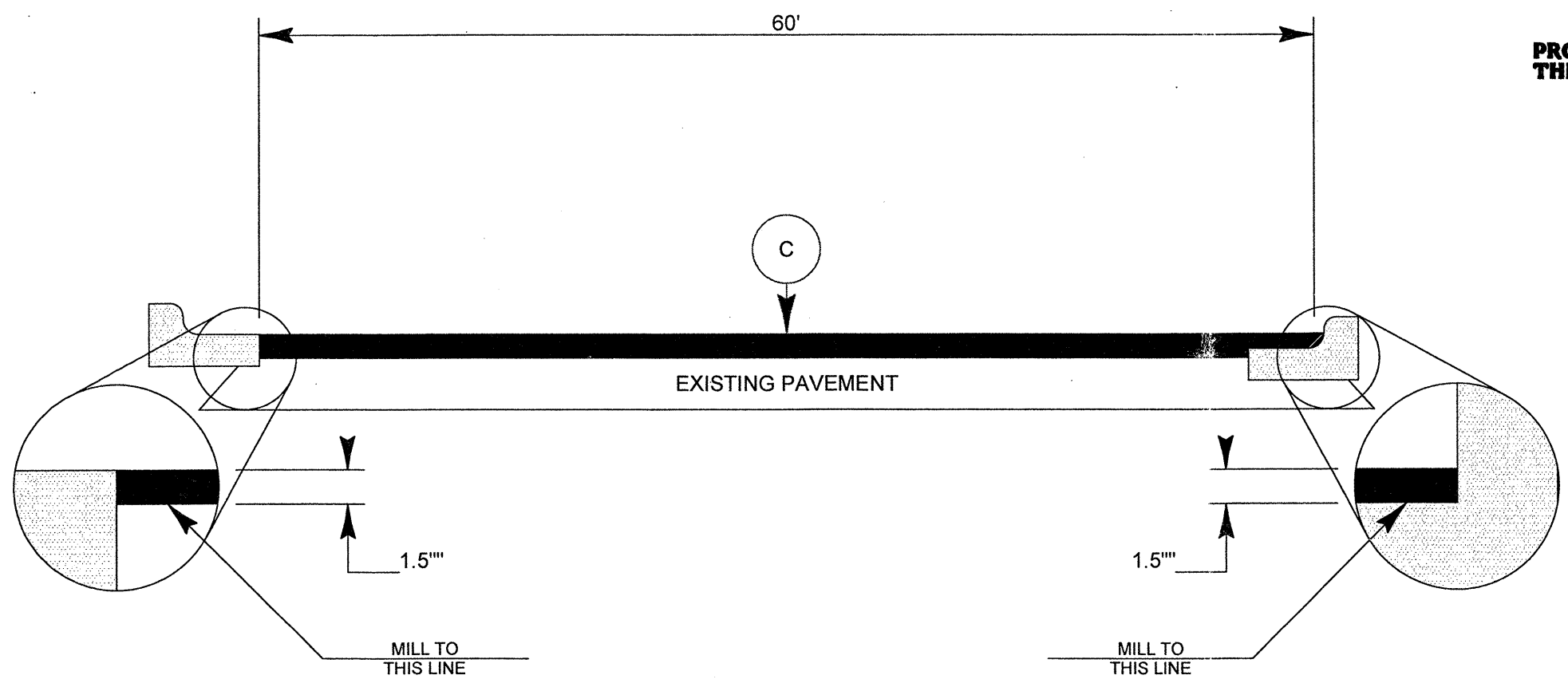
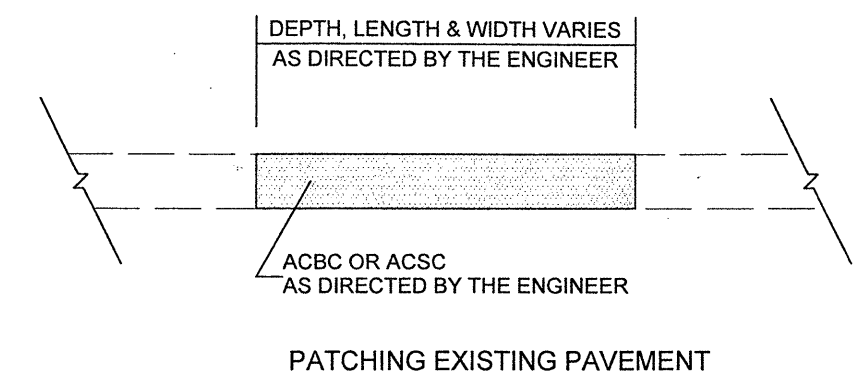


BUNCOMBE COUNTY

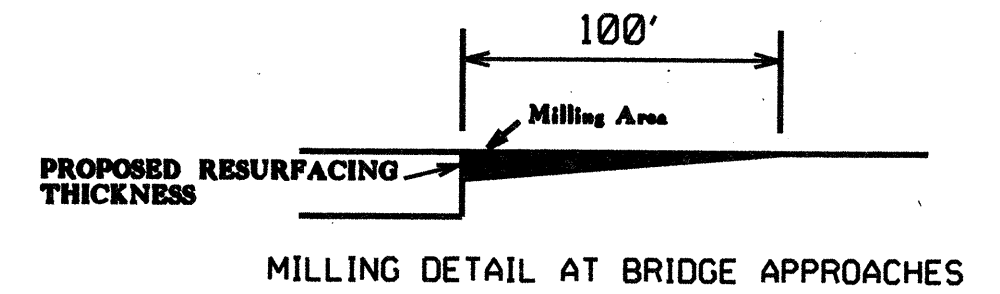
PROJECT NO.	SHEET NO.	TOTAL SHEETS
13CR.10111.7, 13CR.20111.5	3	



TYPICAL SECTION NO. 1

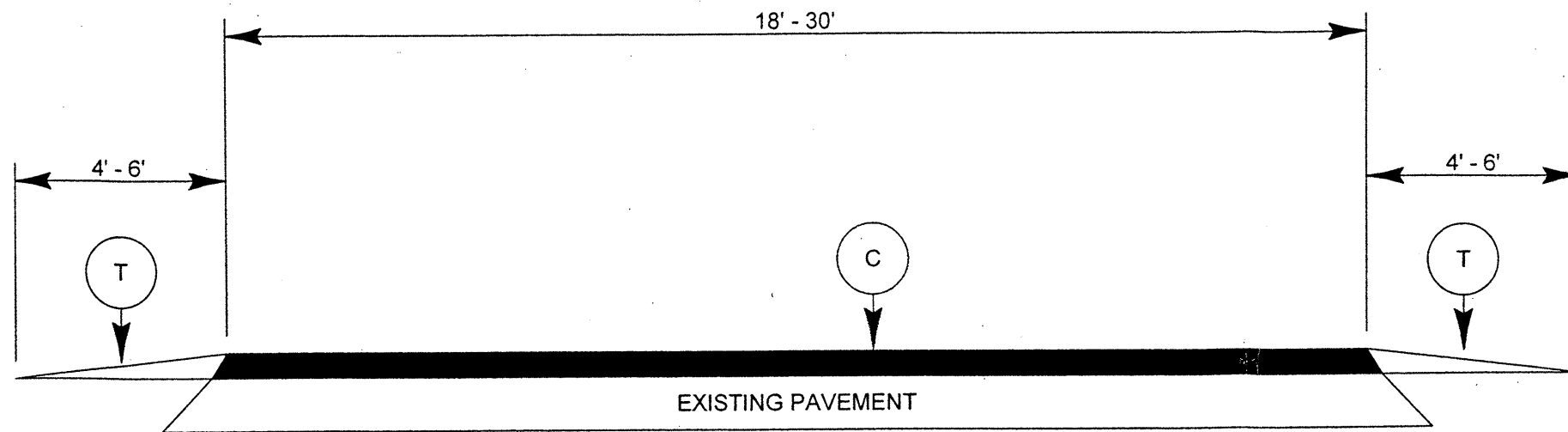


TYPICAL SECTION NO. 2



PAVEMENT SCHEDULE	
C	PROP. APPROX. 1.5" ACSC, TYPE S9.5B AT AN AVERAGE RATE OF 168 LBS. PER SY
T	SHOULDER RECONSTRUCTION

PROJECT NO.	SHEET NO.	TOTAL SHEETS
13CR.10111.7, 13CR.20111.5	4	



TYPICAL SECTION NO. 3

NOTES

ALL UNPAVED ROADS TO BE RESURFACED 50' FROM EDGE OF PAVEMENT OF MAIN PROJECT.
 ALL PAVED S.R. ROADS TO BE RESURFACED TO THE ENDS OF THE RADII, OR AS DIRECTED BY THE ENGINEER.
 EDGES, PAVEMENT WIDENING, INTERSECTIONS AND BRIDGE FLARES ARE INCLUDED IN THE TABLE OF QUANTITIES.
 SHOULDERS AND DITCHES ARE TO BE CONSTRUCTED BY OTHERS UNLESS OTHERWISE INDICATED.
 BRIDGES ARE TO BE RESURFACED AT LOCATIONS AND TO DEPTH AS DIRECTED BY THE ENGINEER.

PROJECT NO.	SHEET NO.	TOTAL NO.
13CR.10111.7, 13CR.20111.5	5	

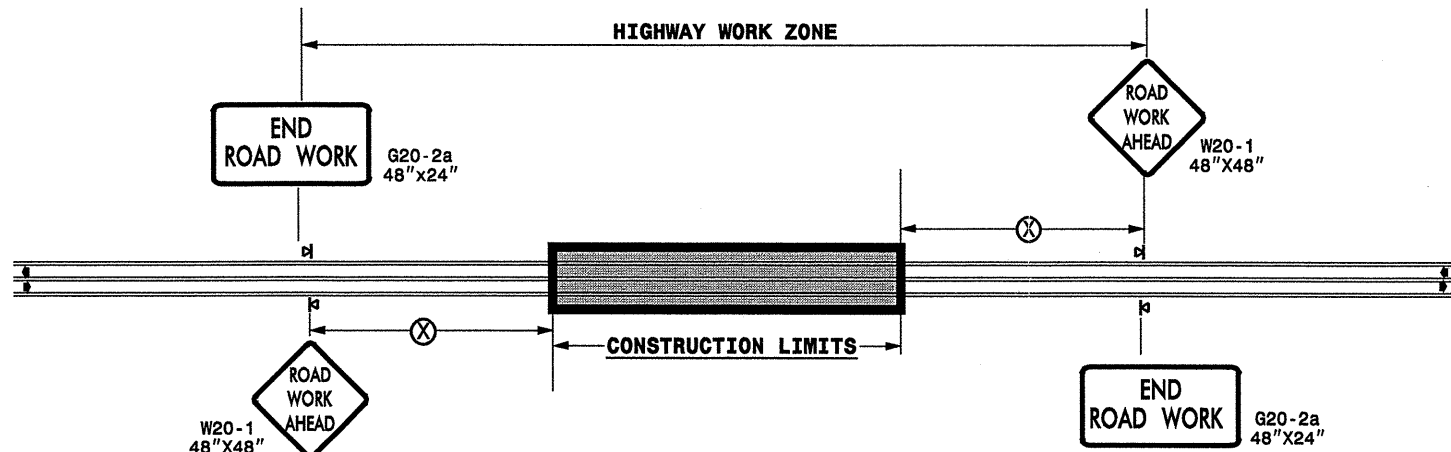
SUMMARY OF QUANTITIES

PROJECT NO	COUNTY	MAP NO	ROUTE	DESCRIPTION	TYP NO	LENGTH MI	WIDTH FT	INCIDENTAL STONE BASE TONS	SHOULDER RECONSTRUCTION SMI	1½" MILLING SY	0" TO 1.5" MILLING SY	SURFACE COURSE, S9.5B TONS	PG 64-22 PLANT MIX TONS	PATCHING EXISTING PAVEMENT TONS	RETROFIT EXIST. WHEEL CHAIR RAMPS EA	WHEELCHAIR RAMPS EA	MANHOLES EA	METER OR VALVE BOX EA
13CR.10111.7	Buncombe	1	US 19-23	EAST END OF OLD HAYWOOD RD. TO CONCRETE PAVEMENT	1	1.2	60				16,896	4,196	252	118	12	20	1	11
		2	US 19-23	200' EAST OF NC 151 TO 200' WEST OF NC 151	2	0.1	60			3520		401	24	45		4		2
		3	US 19-23 BUS	WEAVERVILLE CITY LIMITS TO SR 1727	3	0.3	30	15	0.6			569	34	54				
		4	US 70 (TUNNEL RD)	TUNNEL TO KENILWORTH ROAD	1	0.78	58				10,982	2,788	167	54	15	18	15	15
TOTAL FOR PROJ NO. 13CR.10111.7						2.38		15	0.6	3520	27,878	7,954	477	271	27	42	16	28
13CR.20111.5	Buncombe	5	SR 3495	NC 191 TO SR 3527	3	3.2	22	160	6.4			4,349	261	950				
		6	SR 3492	SR 3486 TO HENDERSON	3	1.5	20	75	3			1,999	120	172				
		7	SR 2171	NC 197 TO END MAINT.	3	2.8	18	320	5.6			3,360	202	191				
		8	SR 1312	SR 1309 TO END MAINT.	3	0.4	19	20	0.8			470	28	95				
		9	SR 2412	US 70 TO SR 2416	3	1.6	22	80	3.2			2,174	130	191				
		10	SR 1004	HAYWOOD COUNTY EASTERLY FOR .75 MI	3	0.75	25	55	1.5			1,211	73	133				
		11	SR 3074	SR 3121 TO SR 3071	3	1.55	18	78	3.1			1,928	116	191				
		12	SR 1641	SR 1642 TO SR 1625	3	0.9	20	45	1.8			1,287	77	96				
TOTAL FOR PROJ NO. 13CR.20111.5						12.7		833	25.4	0		16,778	1,007	2,019				
GRAND TOTAL						15.08	0	848	26	3520	27,878	24,732	1,484	2,290	27	42	16	28

THERMOPLASTIC AND PAINT QUANTITIES

PROJECT NO	COUNTY	MAP NO	ROUTE	DESCRIPTION	4685000000-E	4686000000-E	4697000000-E	4710000000-E	4721000000-E	4725000000-E					4810000000-E		4835000000-E	
					4" X 90 M WHITE THERMO LF	4" X 120 M YELLOW THERMO LF	4" X 120 M WHITE THERMO LF	8" X 120 M WHITE THERMO LF	24" X 120 M WHITE THERMO LF	THERMO MSG SCHOOL 120 M EA	THERMO STR ARROW 90 M EA	THERMO LT ARROW 90 M EA	THERMO RT ARROW 90 M EA	THERMO STR & LT ARROW 90 M EA	THERMO STR & RT ARROW 90 M EA	4" WHITE PAINT LF	4" YELLOW PAINT LF	24" WHITE PAINT LF
13CR.10111.7	Buncombe	1	US 19-23	EAST END OF OLD HAYWOOD RD. TO CONCRETE PAVEMENT	480	15,840		660	24	6	25	14						
		2	US 19-23	200' EAST OF NC 151 TO 200' WEST OF NC 151	40	1,320	264	72			6							
		3	US 19-23 BUS	WEAVERVILLE CITY LIMITS TO SR 1727	3,168	3,168		30										
		4	US 70 (TUNNEL RD)	TUNNEL TO KENILWORTH ROAD	312	8,237	343	204	444	9	27	3	1	1				
TOTAL FOR PROJ NO. 13CR.10111.7					4,000	28,565	607	204	1,206	24	15	58	17	1	1			
						29,172						92						
13CR.20111.5	Buncombe	5	SR 3495	NC 191 TO SR 3527												67,584	67,584	44
		6	SR 3492	SR 3486 TO HENDERSON												31,680	31,680	40
		7	SR 2171	NC 197 TO END MAINT.												59,136	59,136	18
		8	SR 1312	SR 1309 TO END MAINT.												8,448	8,448	19
		9	SR 2412	US 70 TO SR 2416												33,792	33,792	44
		10	SR 1004	HAYWOOD COUNTY EASTERLY FOR .75 MI												15,840	15,840	
		11	SR 3074	SR 3121 TO SR 3071												32,736	32,736	36
		12	SR 1641	SR 1642 TO SR 1625												19,008	19,008	40
TOTAL FOR PROJ NO. 13CR.20111.5																268,224	268,224	241
																536,448		
GRAND TOTAL					4,000	28,565	607	204	1,206	24	15	58	17	1	1	268,224	268,224	241
						29,172						92				536,448		

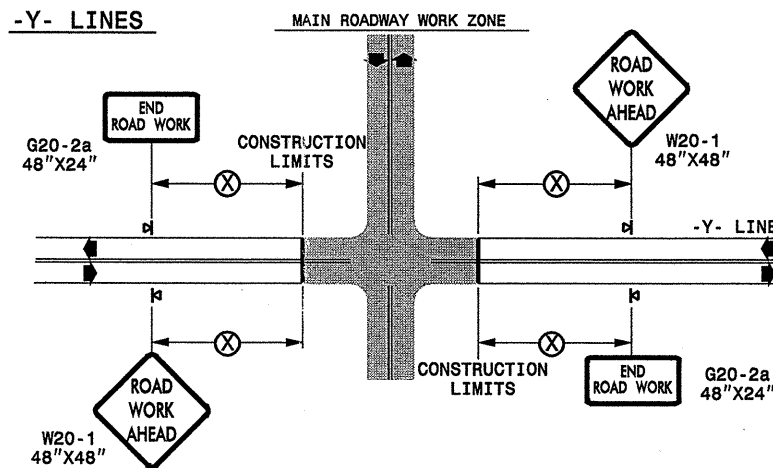
TWO-WAY UNDIVIDED ** (L-LINES)



POSTED SPEED LIMIT (M.P.H.)	RECOMMENDED MINIMUM SIGN SPACING
≤ 50	500'
≥ 55	1000'

STATE OF NORTH CAROLINA
DEPT. OF TRANSPORTATION
DIVISION OF HIGHWAYS
RALEIGH, N.C.

ROADWAYS INTERSECTING ALONG 2 WAY UNDIVIDED WORK ZONE (Y-LINES)



DETAIL DRAWING
FOR TWO-WAY UNDIVIDED
WORK ZONE WARNING SIGNS

GENERAL NOTES

- USE FLUORESCENT ORANGE SHEETING (TYPE VII OR HIGHER) ON ALL ADVANCED WORK ZONE SIGNS.
- DO NOT INSTALL ADVANCE WARNING SIGNS MORE THAN 3 DAYS PRIOR TO BEGINNING OF WORK.
- ALL SIGN SPACING DIMENSIONS ARE APPROXIMATE, FIELD ADJUST AS NECESSARY OR AS DIRECTED.
- USE PORTABLE WORK ZONE SIGNS ONLY WITH PORTABLE WORK ZONE SIGN STANDS SPECIFICALLY DESIGNED FOR ONE ANOTHER. PORTABLE WORK ZONE SIGNS MAY BE ROLL UP OR APPROVED COMPOSITE.
- PROVIDE PORTABLE WORK ZONE SIGN STANDS, PORTABLE SIGNS AND SIGN SHEETING WHICH ARE LISTED ON THE NORTH CAROLINA DEPARTMENT OF TRANSPORTATION'S APPROVED PRODUCT LIST OR ACCEPTED AS TRAFFIC QUALIFIED BY THE TRAFFIC CONTROL UNIT.
- ** TWO-WAY UNDIVIDED ADVANCE WARNING SIGN CONFIGURATION MAY BE USED ON URBAN MULTI-LANE FACILITIES WHERE CONDITIONS LIMIT THE USE OF DUAL MOUNTED SIGNS AS DETERMINED BY THE ENGINEER.

LEGEND

◀ PORTABLE SIGN

➔ DIRECTION OF TRAFFIC FLOW

SHEET 1 OF 1

APPROVED: _____	DATE: _____	DETAIL DRAWING FOR TWO-WAY UNDIVIDED ADVANCED WORK ZONE WARNING SIGNS	
SEAL	SCALE: NONE		REVISIONS
	DATE: _____		7-98 10/01
	DWG. BY: _____		10-98 03/04
	DESIGN BY: _____		01/01 11/04
REVIEWED BY: _____	CHD FILE		

21-NOV-2007 16:17
 \\DDOT\DF\SR00101\GROUPS-WZTCC\design\group4\resurfacing\resurfacing2007\div13\c201983.13cr101117etc_bumcombe_us70etc_c201981.13cr105715etc_2wayundivurbfrwysjuly2006.dgn
 pseymore AT WZTCC231502