

09/08/09

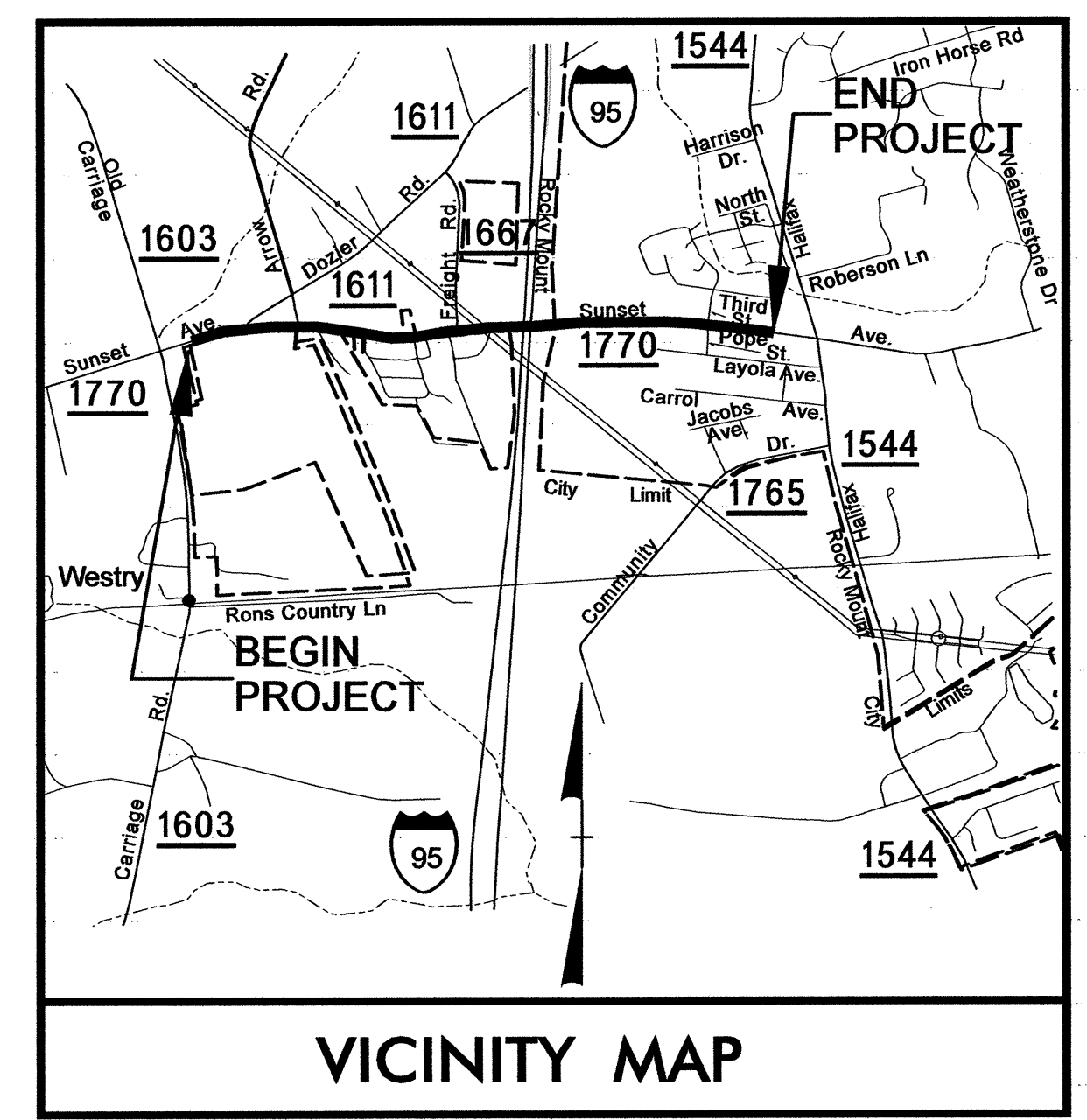
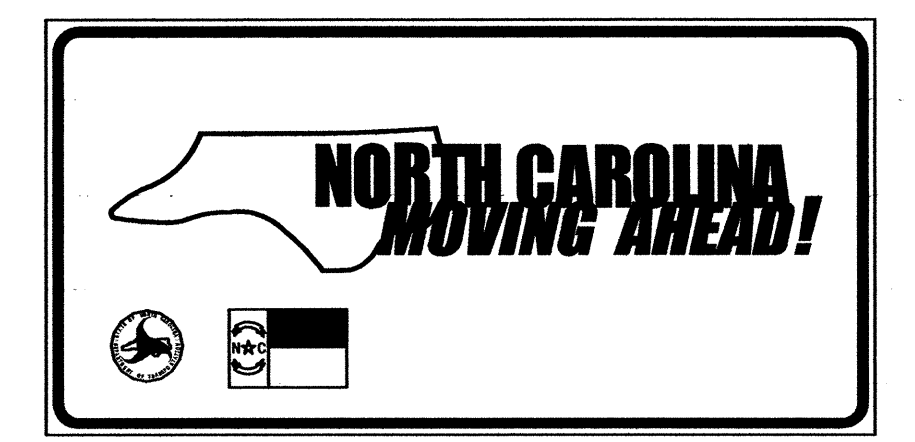
STATE	STATE PROJECT REFERENCE NO.	SHEET NO.	TOTAL SHEETS
N.C.	37748	EC-1	
WBS NO.	37748		

STATE OF NORTH CAROLINA
DIVISION OF HIGHWAYS

PLAN FOR PROPOSED
HIGHWAY EROSION CONTROL

NASH COUNTY

LOCATION: SR 1770 (SUNSET AVENUE) FROM EAST OF SR 1603 TO WEST OF SR 1544



VICINITY MAP

EROSION AND SEDIMENT CONTROL MEASURES

Seq. #	Description	Symbol
	Streambank Reforestation	
1630.05	Temporary Silt Ditch	
1630.05	Temporary Diversion	
1605.01	Temporary Silt Fence	
1606.01	Special Sediment Control Fence	
1622.01	Temporary Berms and Slope Drains	
1630.01	Riser Basin	
1630.02	Silt Basin Type B	
1633.01	Temporary Rock Silt Check Type-A	
	Temporary Rock Silt Check Type-B	
1634.01	Temporary Rock Sediment Dam Type-A	
1634.02	Temporary Rock Sediment Dam Type-B	
1635.01	Rock Pipe Inlet Sediment Trap Type-A	
1635.02	Rock Pipe Inlet Sediment Trap Type-B	
1630.04	Stilling Basin	
	Rock Inlet Sediment Trap:	
1632.01	Type A	
1632.02	Type B	
1632.03	Type C	

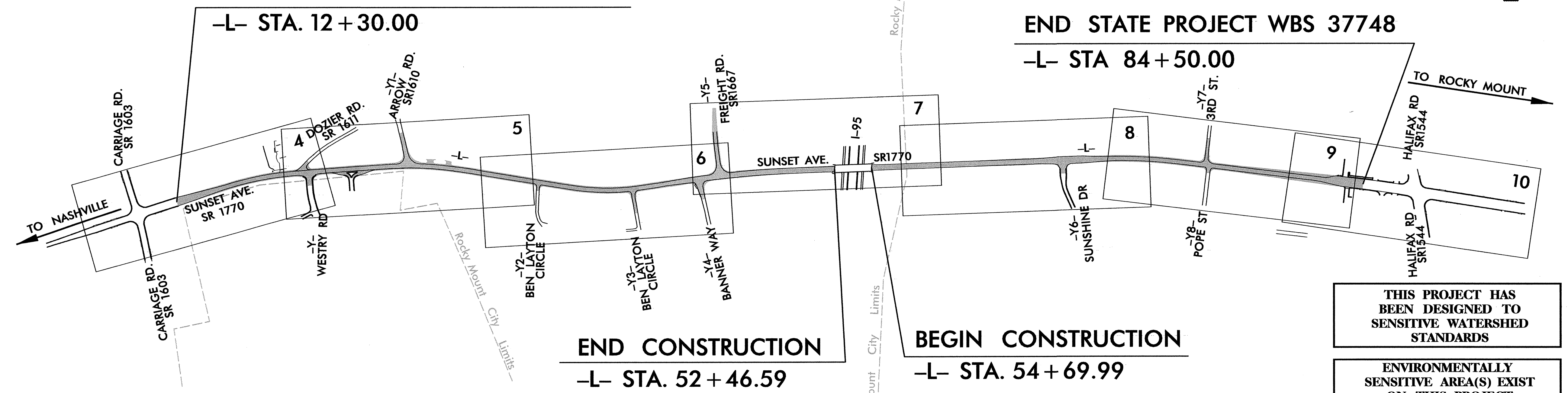


BEGIN STATE PROJECT WBS 37748

-L- STA. 12 + 30.00

END STATE PROJECT WBS 37748

-L- STA 84 + 50.00



END CONSTRUCTION

-L- STA. 52 + 46.59

BEGIN CONSTRUCTION

-L- STA. 54 + 69.99

THIS PROJECT HAS BEEN DESIGNED TO SENSITIVE WATERSHED STANDARDS

ENVIRONMENTALLY SENSITIVE AREA(S) EXIST ON THIS PROJECT
Refer To E. C. Special Provisions for Special Considerations.

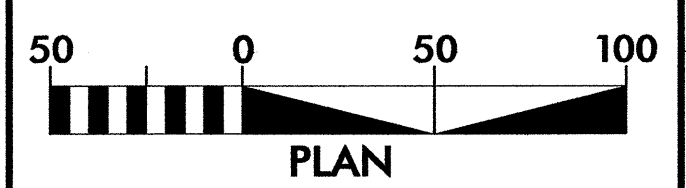
THIS PROJECT CONTAINS EROSION CONTROL PLANS FOR BOTH THE CLEARING & GRUBBING PHASE AND FINAL GRADING PHASE OF CONSTRUCTION.

NCDOT CONTACT: JERRY PAGE, P.E.
DIVISION PROJECT MANAGER, DIVISION FOUR

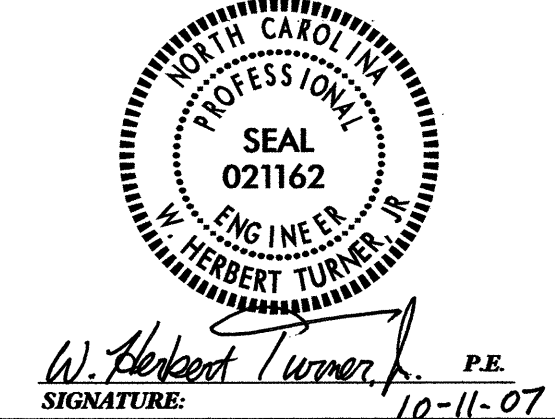
PROJECT: 37748

PROJECT: 37748

GRAPHIC SCALES



ROADSIDE ENVIRONMENTAL PROJECT ENGINEER



MARK S. ACUFF, PE, PLS
ROADSIDE ENVIRONMENTAL ENGINEER

W. HERBERT TURNER, JR., PE
ROADSIDE ENVIRONMENTAL PROJECT ENGINEER

R. KEVIN WILLIAMS, PE, PLS, CPESC
ROADSIDE ENVIRONMENTAL PROJECT DESIGN ENGINEER

Prepared In the Office of:
KO & ASSOCIATES, P.C.
1011 Schaub Dr. Suite 202, Raleigh NC, 27606

2006 STANDARD SPECIFICATIONS

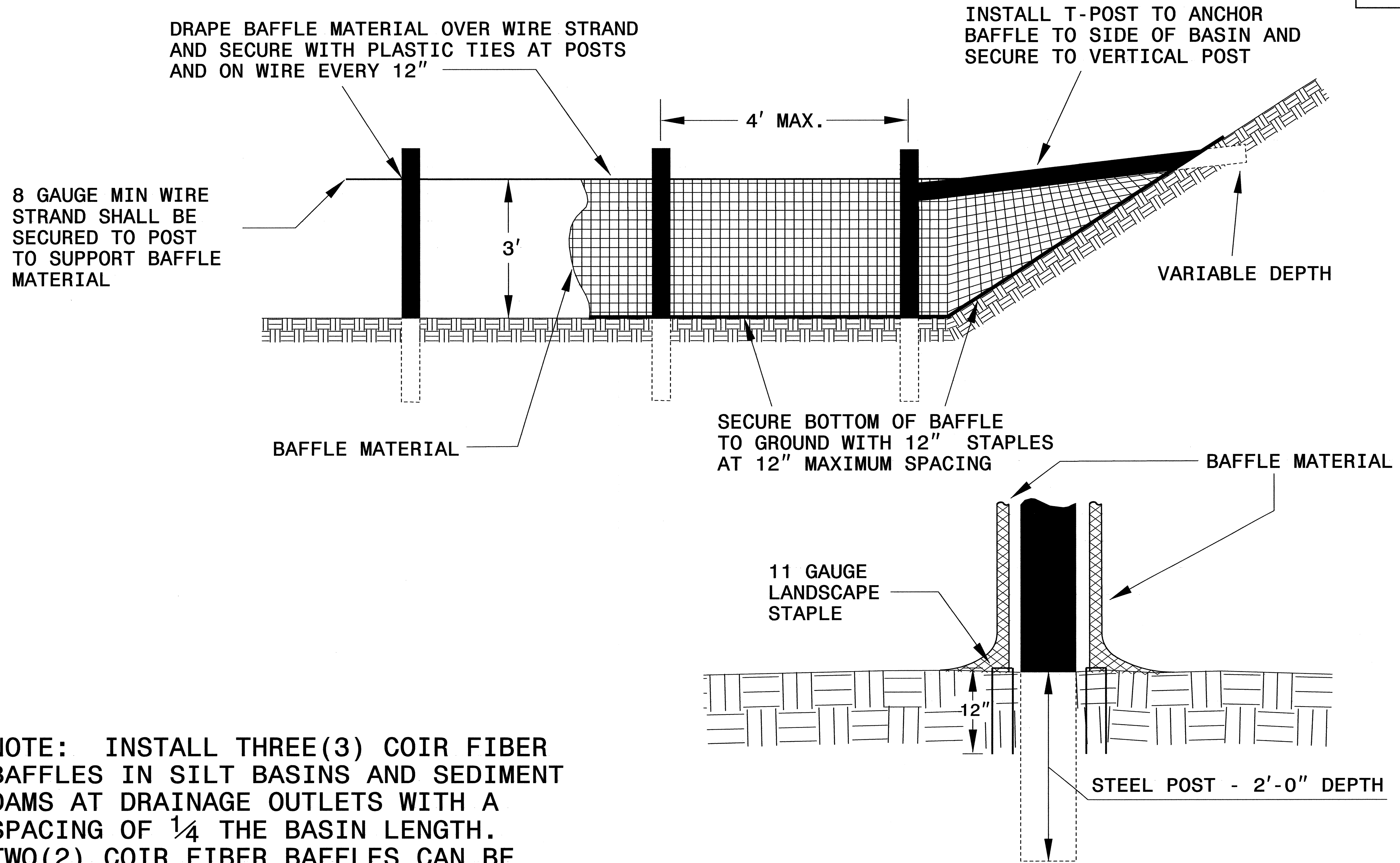
Roadway Standard Drawings

The following roadway english standards as appear in "Roadway Standard Drawings"- Roadway Design Unit - N. C. Department of Transportation - Raleigh, N. C., dated July 18, 2006 and the latest revision thereto are applicable to this project and by reference hereby are considered a part of these plans.

1605.01 Temporary Silt Fence	1632.03 Rock Inlet Sediment Trap Type C
1607.01 Gravel Construction Entrance	1633.01 Temporary Rock Silt Check Type A
1630.02 Silt Basin Type B	1634.01 Temporary Rock Sediment Dam Type A
1630.03 Temporary Silt Ditch	1634.02 Temporary Rock Sediment Dam Type B
1630.05 Temporary Diversion	1635.01 Rock Pipe Inlet Sediment Trap Type A
1630.06 Special Stilling Basin	

04/2007 reg:\p\ec\139-ec-01.tsh.dgn

COIR FIBER BAFFLE DETAIL

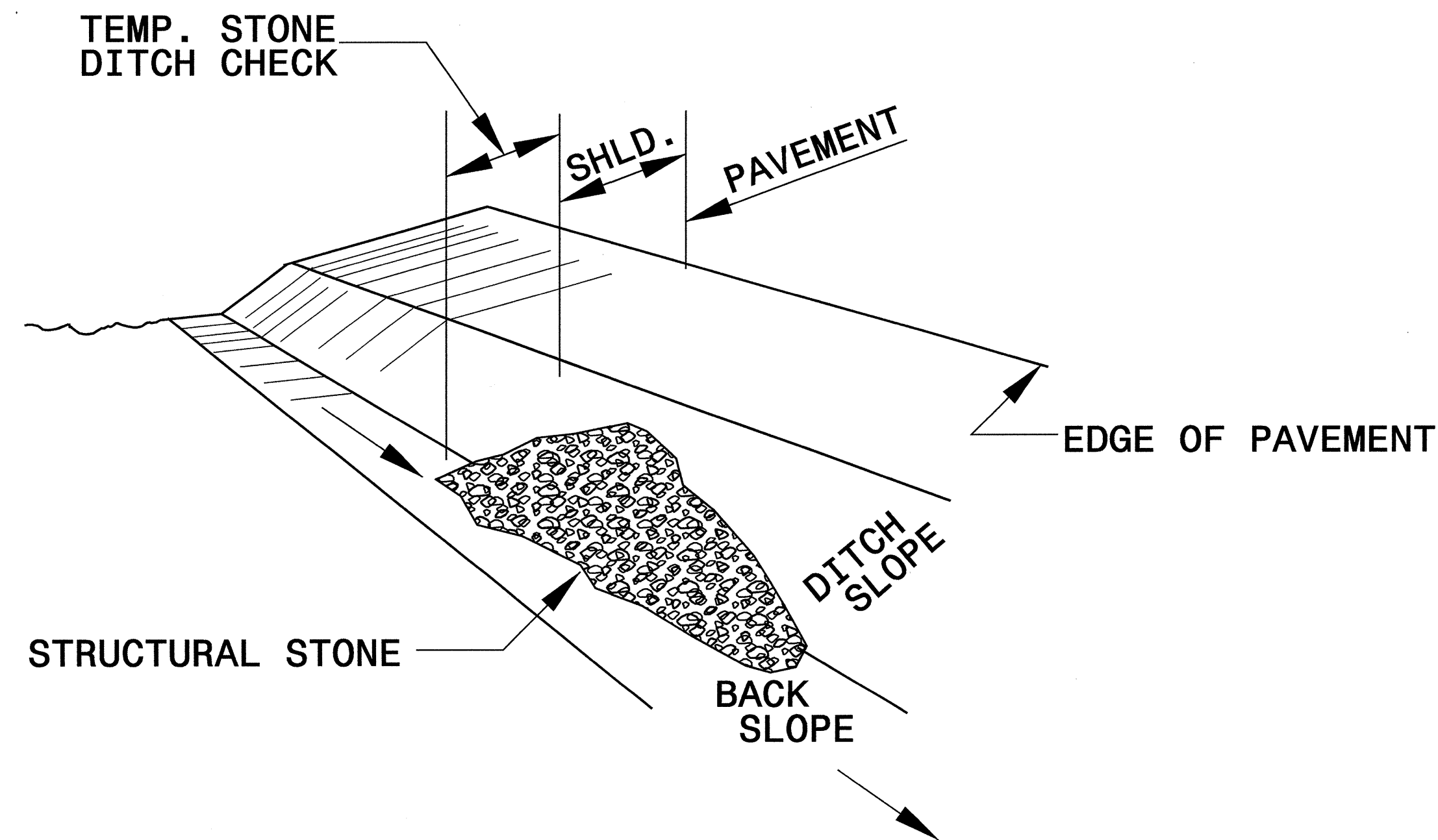


NOTE: INSTALL THREE(3) COIR FIBER BAFFLES IN SILT BASINS AND SEDIMENT DAMS AT DRAINAGE OUTLETS WITH A SPACING OF $\frac{1}{4}$ THE BASIN LENGTH. TWO(2) COIR FIBER BAFFLES CAN BE INSTALLED IN SILT BASINS AND DAMS LESS THAN 20 FT. IN LENGTH WITH A SPACING OF $\frac{1}{3}$ THE BASIN LENGTH.

BAFFLE MATERIAL SHALL BE SECURED TO THE BOTTOM AND SIDES OF BASIN USING 12" LANDSCAPE STAPLES

PROJECT REFERENCE NO. 37748	SHEET NO. EC-2A
RW SHEET NO.	
ROADWAY DESIGN ENGINEER	HYDRAULICS ENGINEER

TEMPORARY ROCK SILT CHECK TYPE 'B' DETAIL

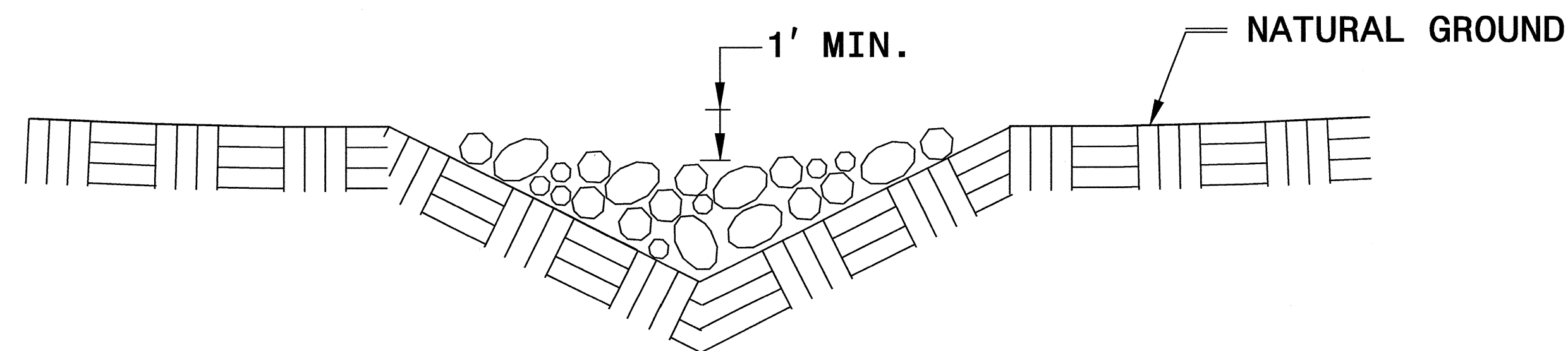


ISOMETRIC VIEW

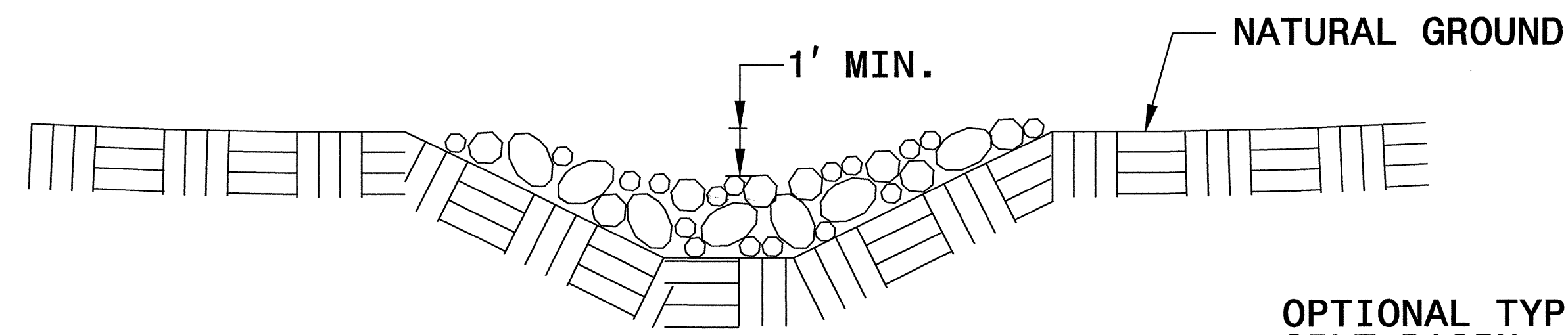
NOTES:

USE CLASS 'B' EROSION CONTROL STONE FOR STRUCTURAL STONE.

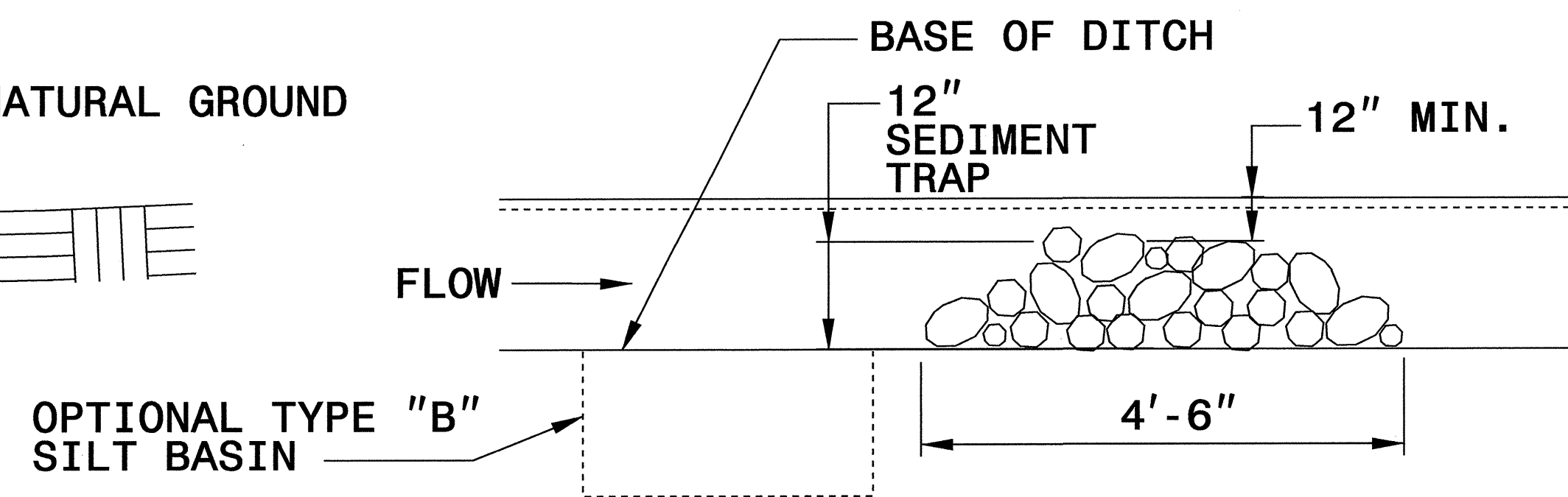
THE ENGINEER MAY DIRECT THE OPTION OF CLASS "A" STONE FOR SITES HAVING LESS THAN ONE (1) ACRE DRAINAGE AREA AND A DITCH GRADE LESS THAN 3%.



CROSS SECTION VEE DITCH



CROSS SECTION TRAPEZOIDAL DITCH

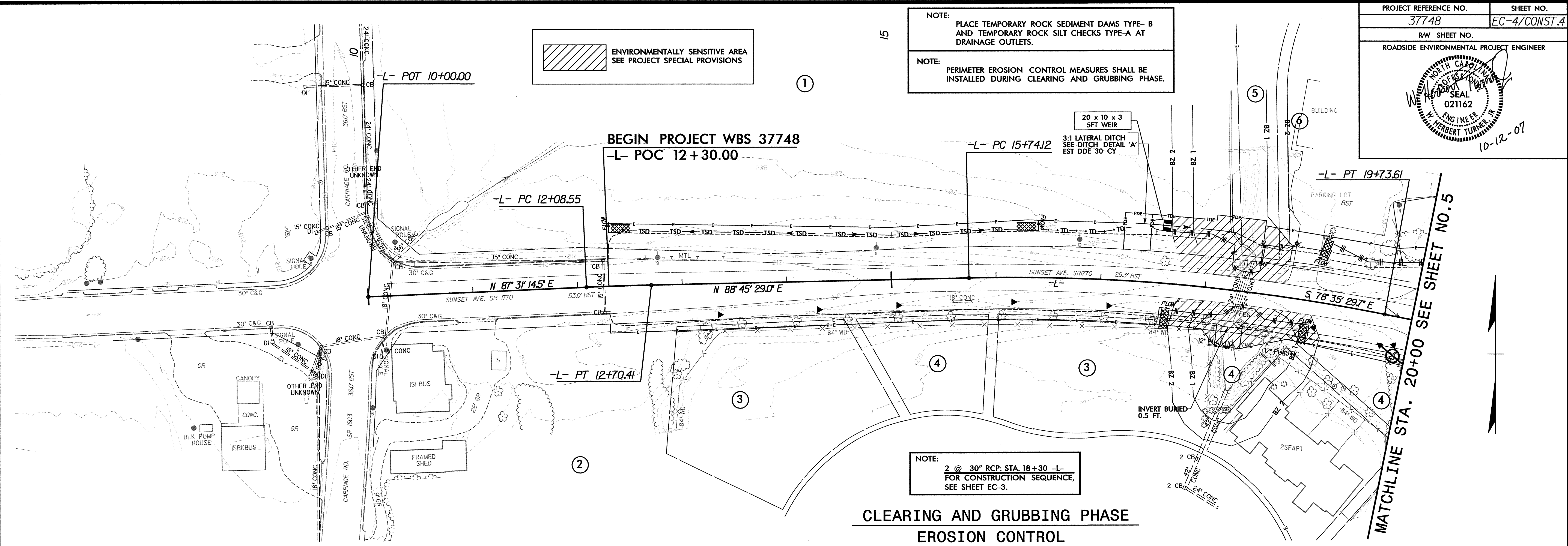


ELEVATION VIEW

NOTE: PLACE TEMPORARY ROCK SEDIMENT DAMS TYPE-B AND TEMPORARY ROCK SILT CHECKS TYPE-A AT DRAINAGE OUTLETS.

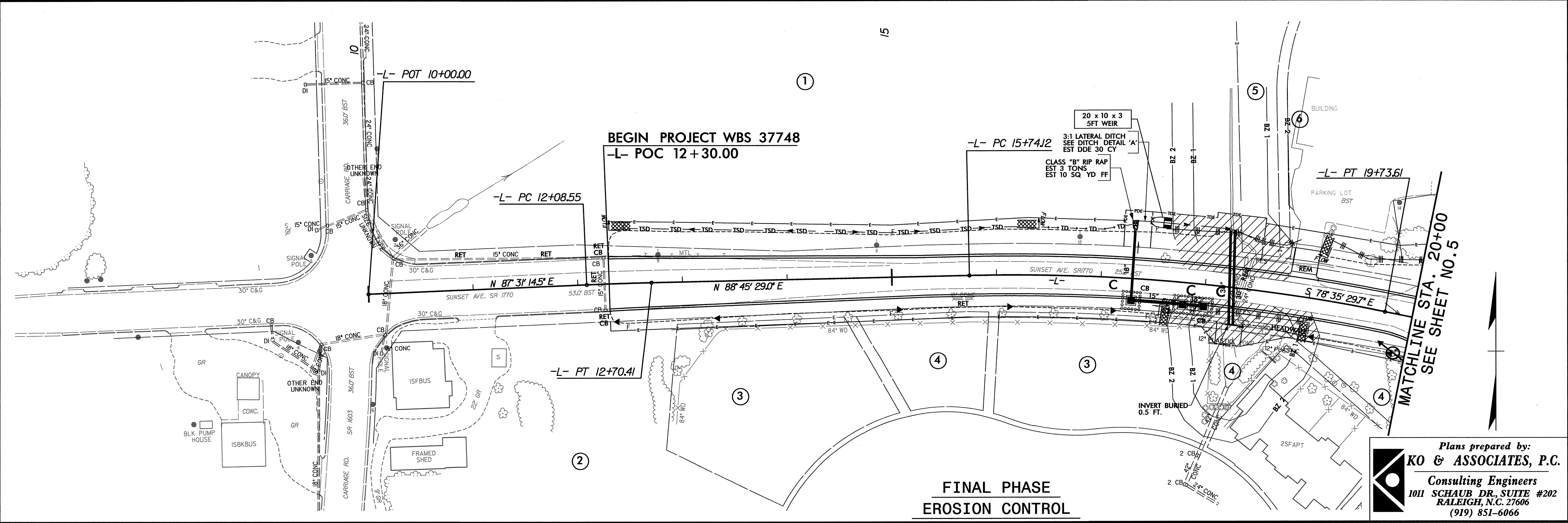
NOTE: PERIMETER EROSION CONTROL MEASURES SHALL BE INSTALLED DURING CLEARING AND GRUBBING PHASE.

ENVIRONMENTALLY SENSITIVE AREA
SEE PROJECT SPECIAL PROVISIONS



NOTE: 2 @ 30" RCP: STA. 18+30 -L-
FOR CONSTRUCTION SEQUENCE,
SEE SHEET EC-3.

**CLEARING AND GRUBBING PHASE
EROSION CONTROL**

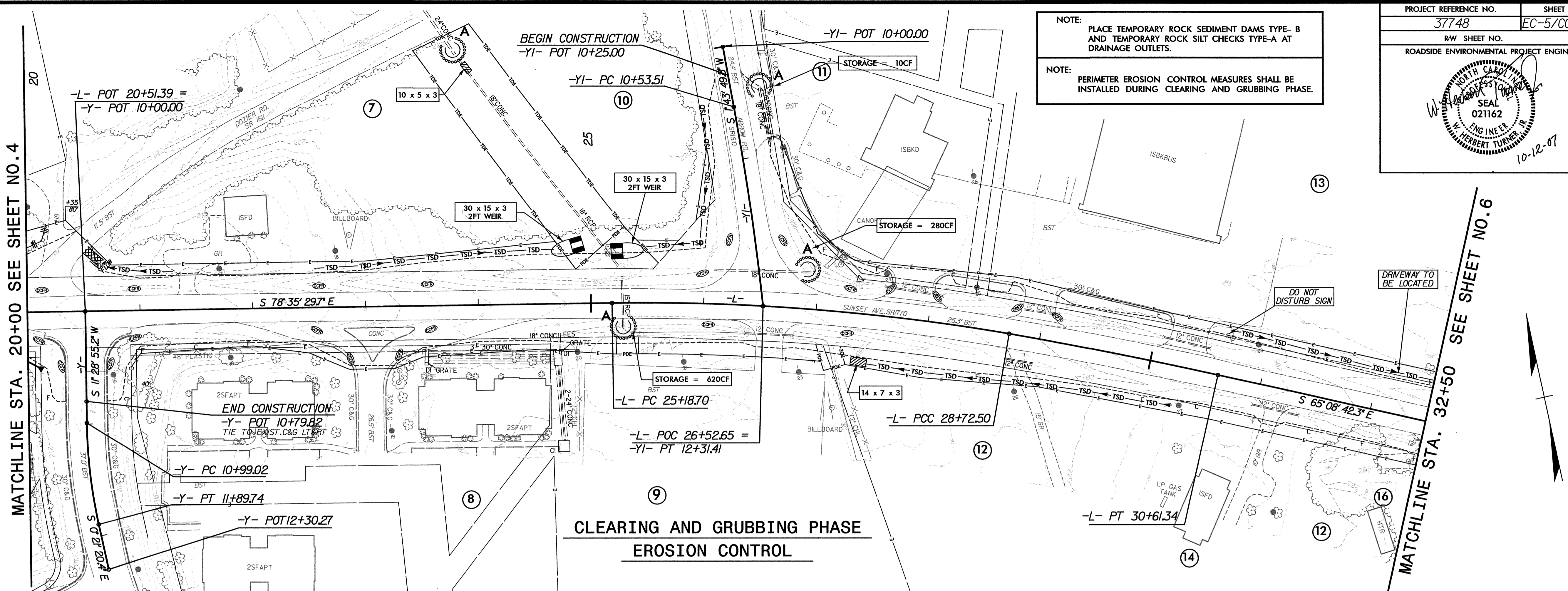


**FINAL PHASE
EROSION CONTROL**

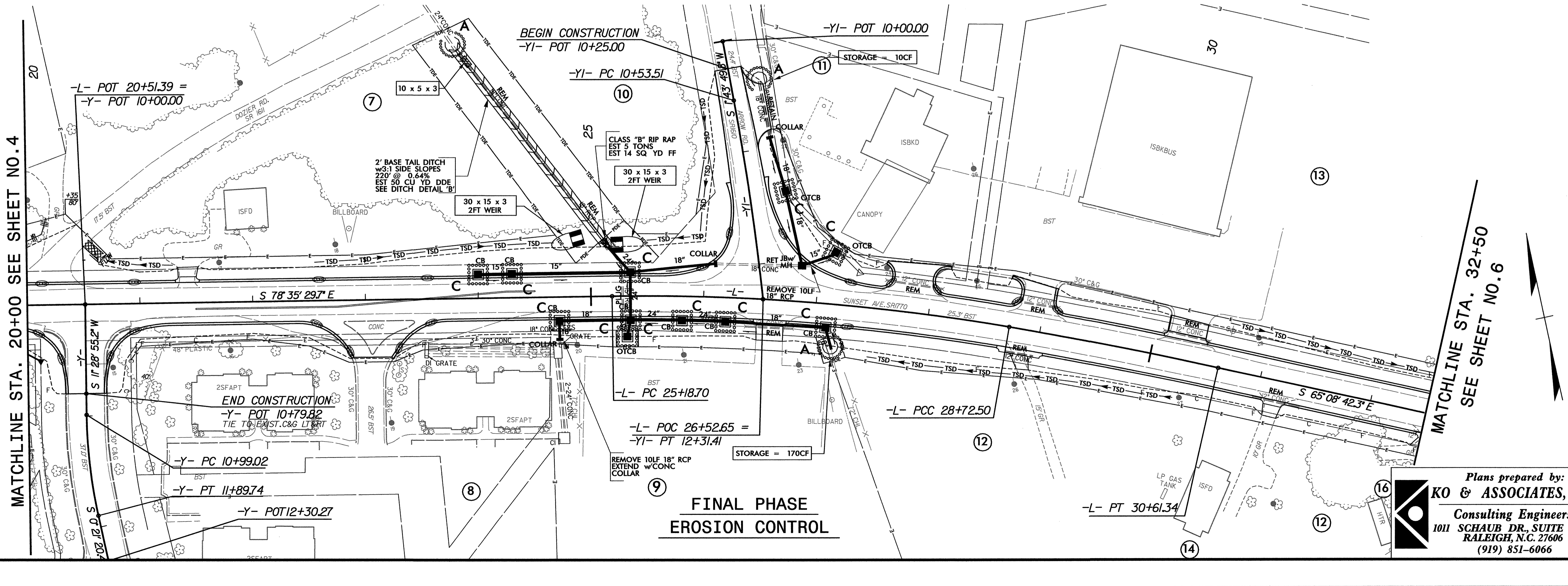
10/12/2007
P:\Projects\37748\Drawings\ec_04.dgn

NOTE:
PLACE TEMPORARY ROCK SEDIMENT DAMS TYPE- B
AND TEMPORARY ROCK SILT CHECKS TYPE-A AT
DRAINAGE OUTLETS.

NOTE:
PERIMETER EROSION CONTROL MEASURES SHALL BE
INSTALLED DURING CLEARING AND GRUBBING PHASE.



**CLEARING AND GRUBBING PHASE
EROSION CONTROL**

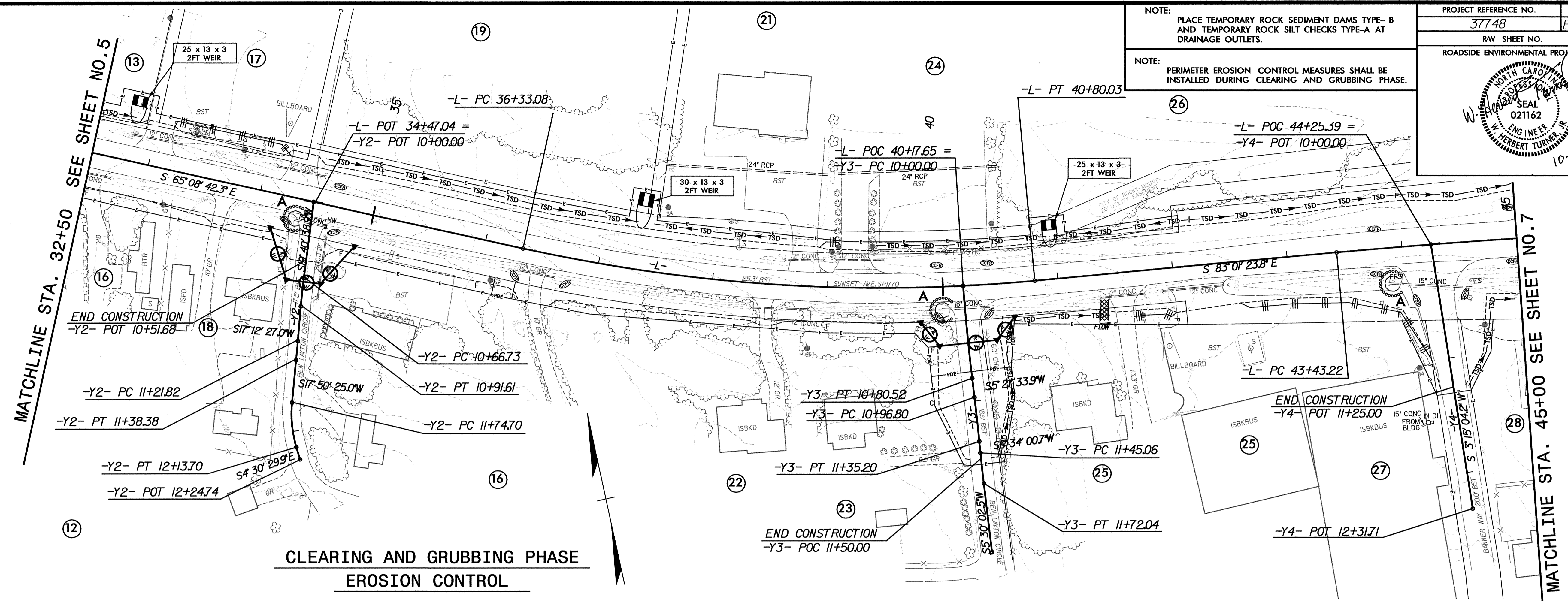
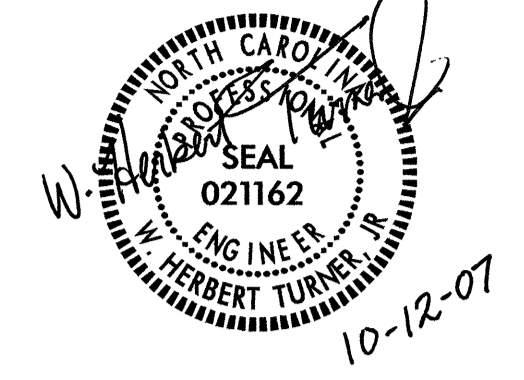


**FINAL PHASE
EROSION CONTROL**

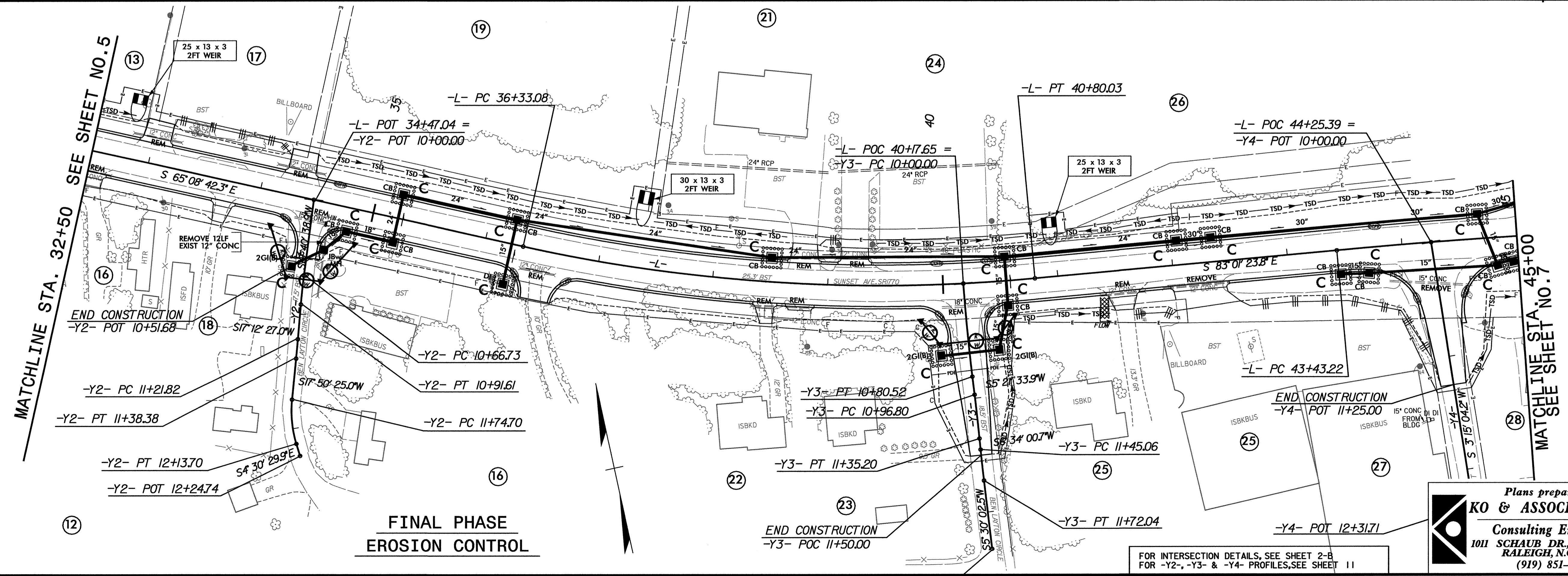
D:\12\2007\Projects\94139-ec-05.dgn

NOTE:
PLACE TEMPORARY ROCK SEDIMENT DAMS TYPE-B AND TEMPORARY ROCK SILT CHECKS TYPE-A AT DRAINAGE OUTLETS.

NOTE:
PERIMETER EROSION CONTROL MEASURES SHALL BE INSTALLED DURING CLEARING AND GRUBBING PHASE.



**CLEARING AND GRUBBING PHASE
EROSION CONTROL**



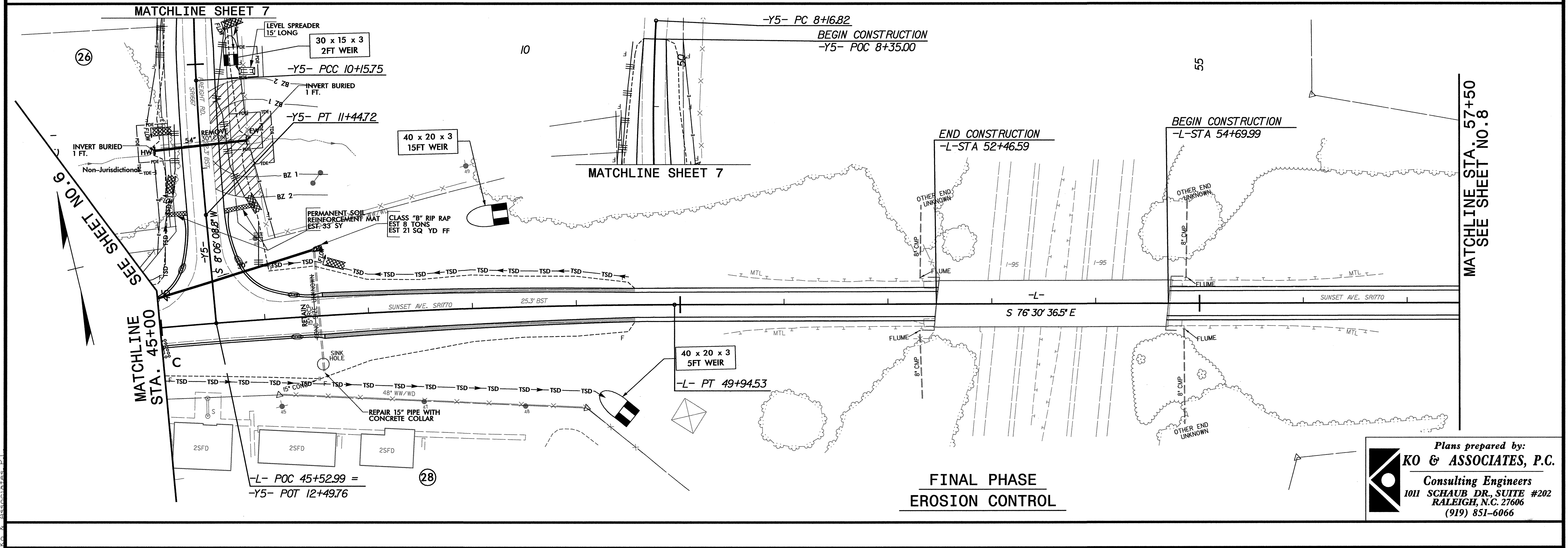
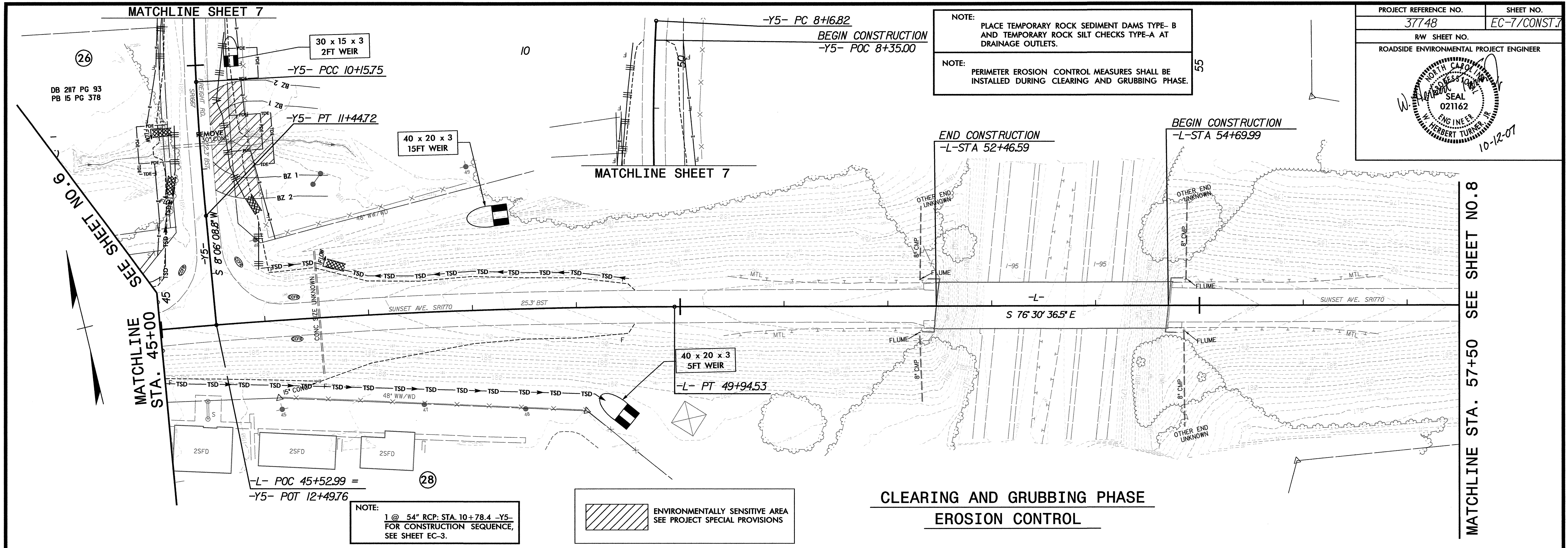
**FINAL PHASE
EROSION CONTROL**

FOR INTERSECTION DETAILS, SEE SHEET 2-B
FOR -Y2-, -Y3- & -Y4- PROFILES, SEE SHEET 11

Plans prepared by:
KO & ASSOCIATES, P.C.
Consulting Engineers
1011 SCHAUB DR., SUITE #202
RALEIGH, N.C. 27606
(919) 851-6066

D:\G\2007\Projects\1004139\ec_06.dgn

PROJECT REFERENCE NO. 37748	SHEET NO. EC-7/CONST.7
RW SHEET NO.	
ROADSIDE ENVIRONMENTAL PROJECT ENGINEER	



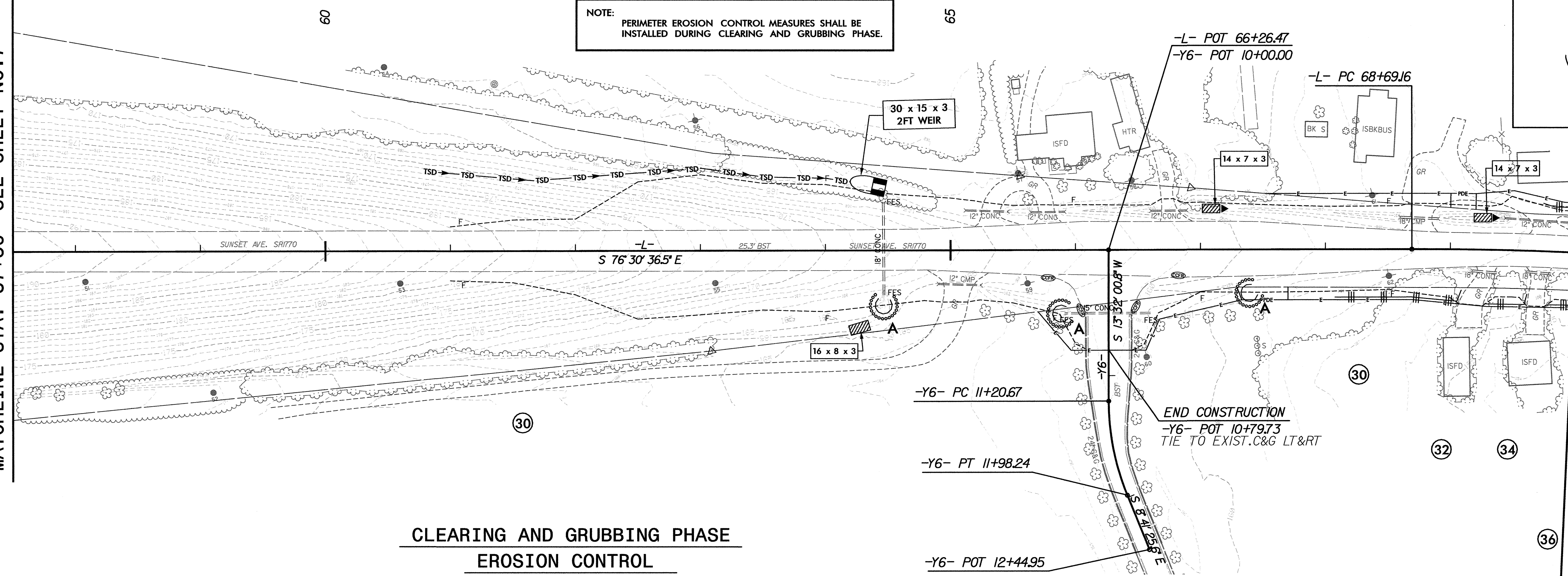
Plans prepared by:
KO & ASSOCIATES, P.C.
 Consulting Engineers
 1011 SCHAUB DR., SUITE #202
 RALEIGH, N.C. 27606
 (919) 851-6066

D:\2007\Projects\N\04139r_ec_07.dgn
 10/12/07 10:00 AM
 W. Herbert Turner

NOTE: PLACE TEMPORARY ROCK SEDIMENT DAMS TYPE-B AND TEMPORARY ROCK SILT CHECKS TYPE-A AT DRAINAGE OUTLETS.

NOTE: PERIMETER EROSION CONTROL MEASURES SHALL BE INSTALLED DURING CLEARING AND GRUBBING PHASE.

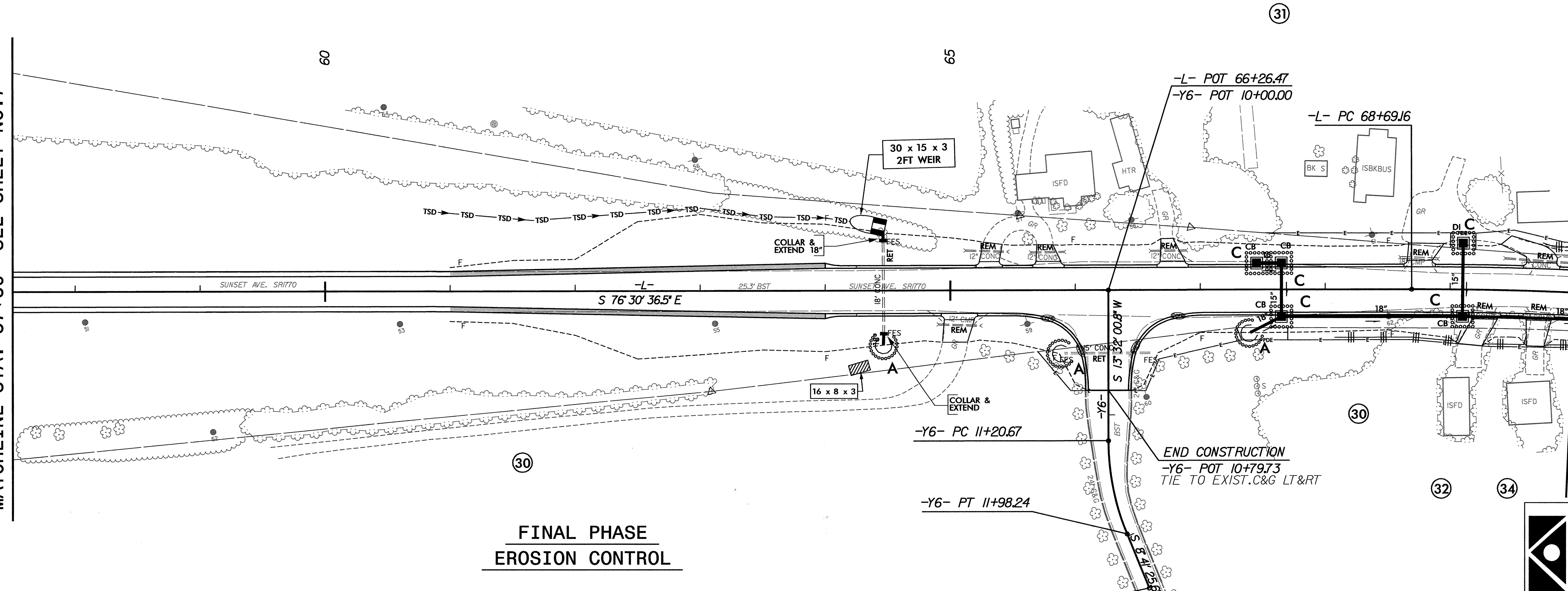
MATCHLINE STA. 57+50 SEE SHEET NO.7



MATCHLINE STA. 70+00 SEE SHEET NO.9

**CLEARING AND GRUBBING PHASE
EROSION CONTROL**

MATCHLINE STA. 57+50 SEE SHEET NO.7



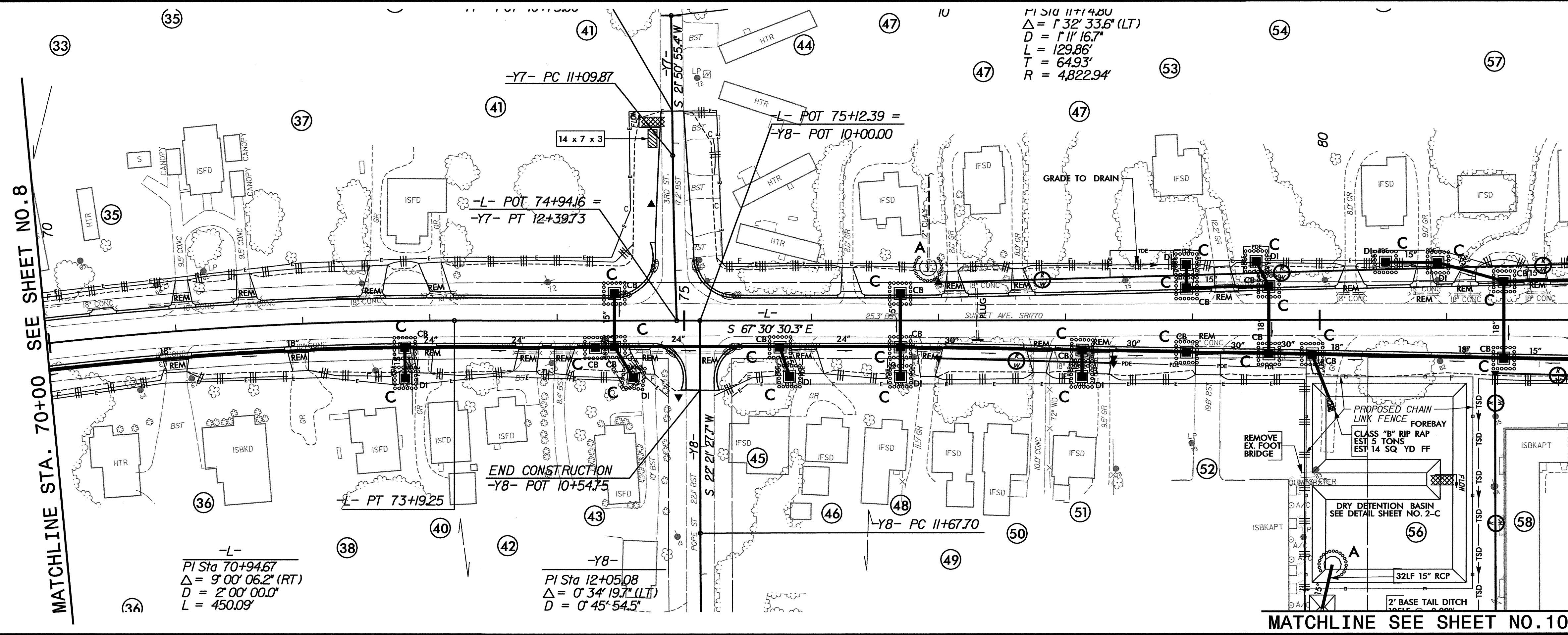
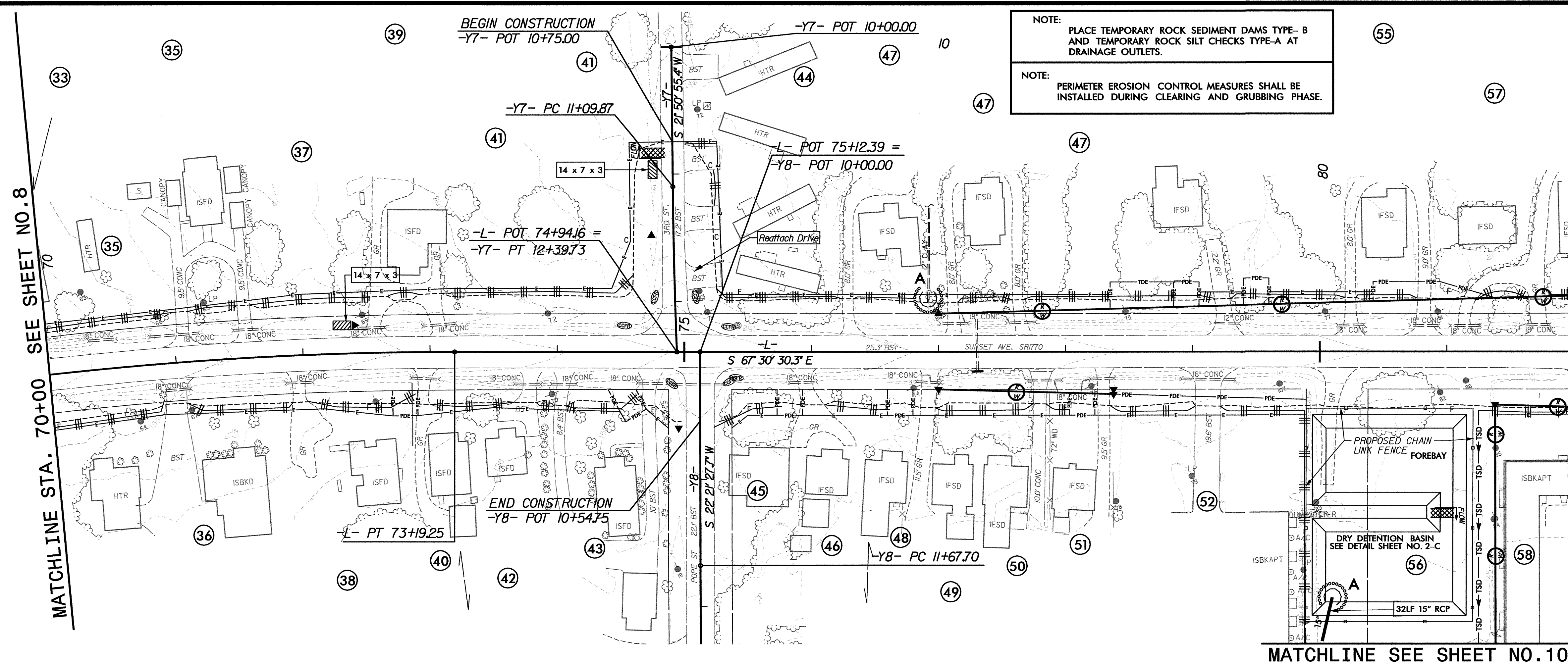
MATCHLINE STA. 70+00
SEE SHEET NO.9

**FINAL PHASE
EROSION CONTROL**

10/12/2007
 P:\oadway\Pro\139r_ec_08.dgn

NOTE:
PLACE TEMPORARY ROCK SEDIMENT DAMS TYPE-B AND TEMPORARY ROCK SILT CHECKS TYPE-A AT DRAINAGE OUTLETS.

NOTE:
PERIMETER EROSION CONTROL MEASURES SHALL BE INSTALLED DURING CLEARING AND GRUBBING PHASE.



MATCHLINE STA. 70+00 SEE SHEET NO. 8

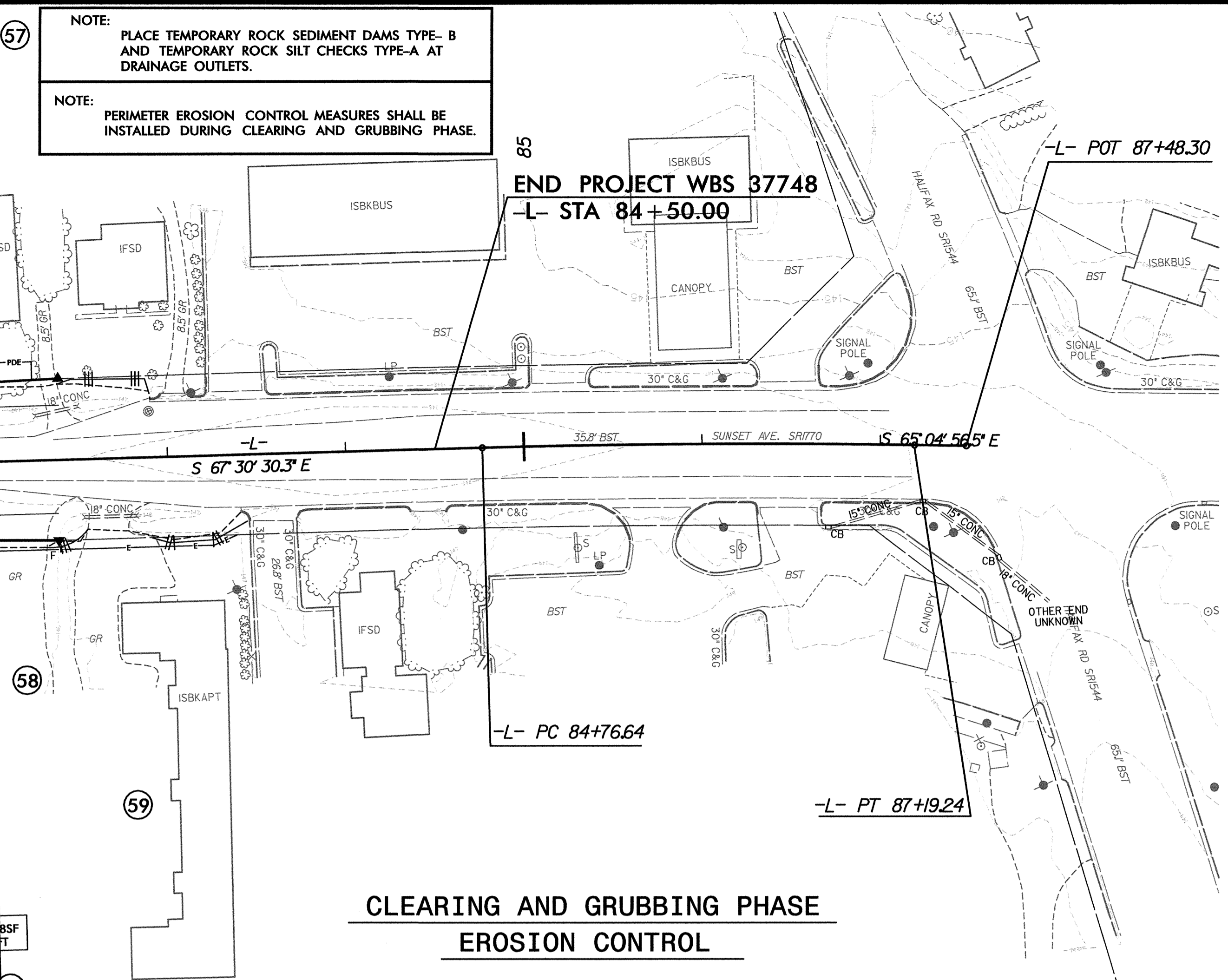
MATCHLINE STA. 82+00 SEE SHEET NO. 10

MATCHLINE STA. 70+00 SEE SHEET NO. 8

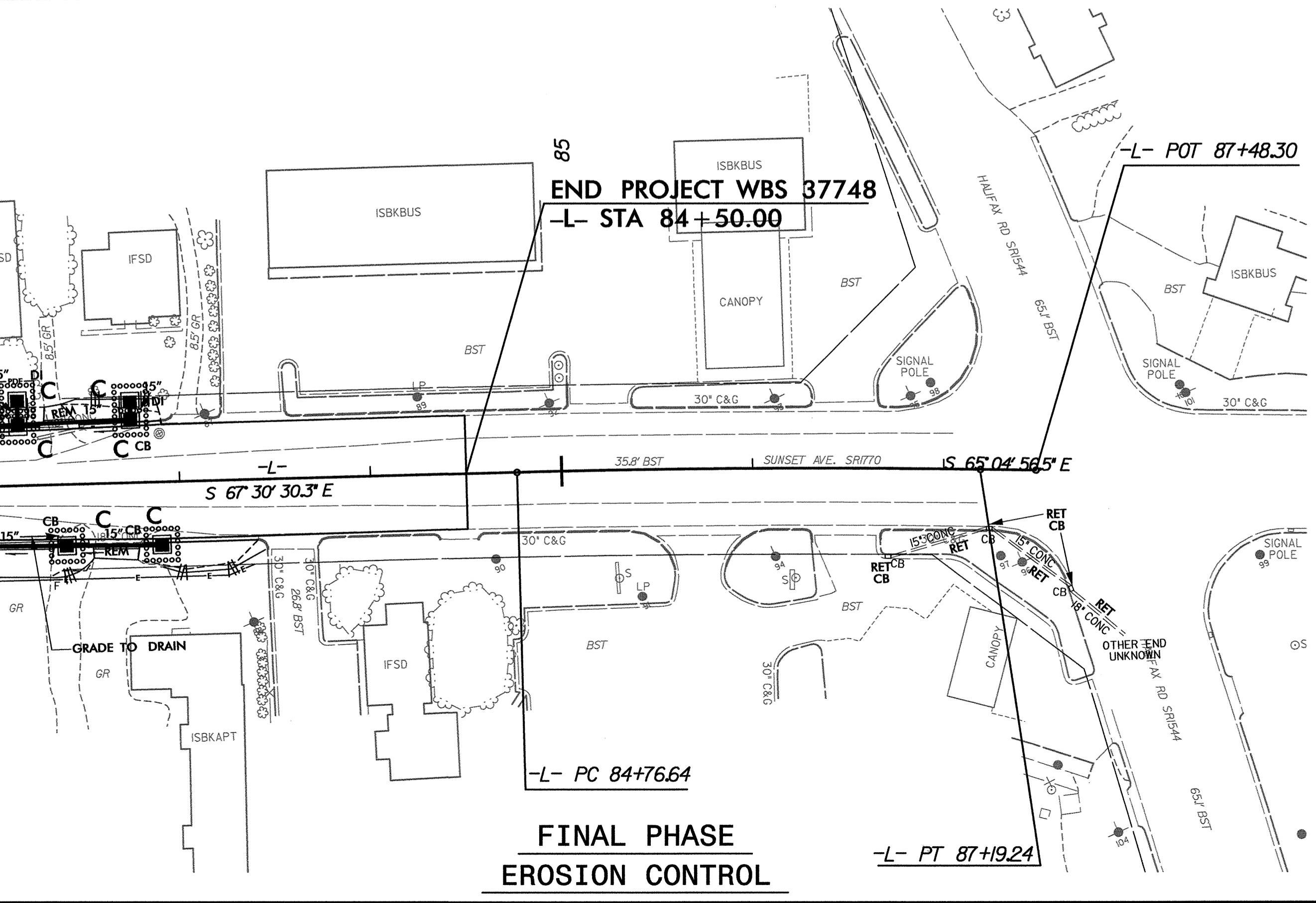
MATCHLINE STA. 82+00 SEE SHEET NO. 10

D:\2007\Projects\Roadway\Proje\B04139r_sc_09.dgn

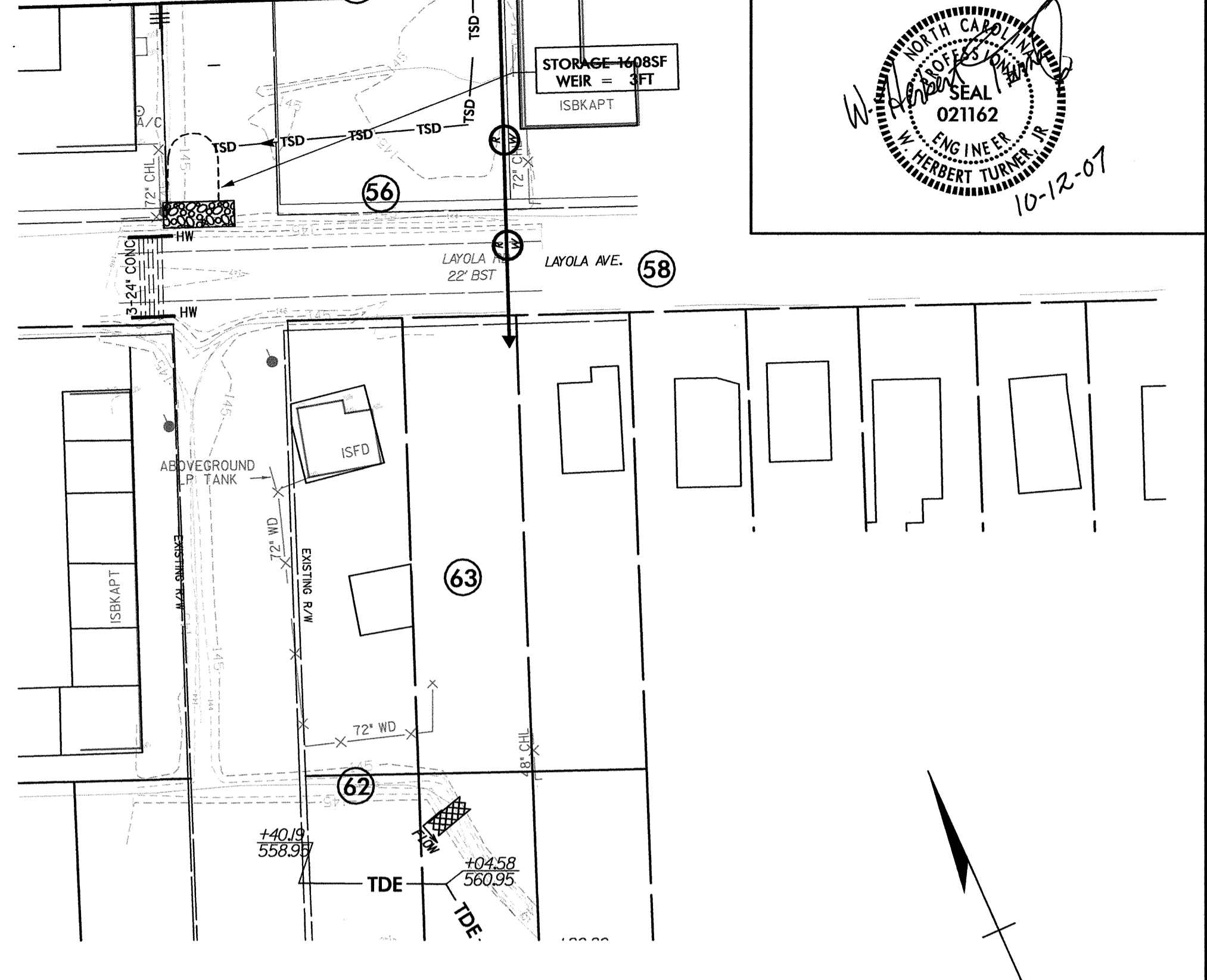
MATCHLINE STA. 82+00 SEE SHEET NO. 9



MATCHLINE STA. 82+00 SEE SHEET NO. 9



MATCHLINE SEE SHEET NO.9



MATCHLINE SEE SHEET NO.9

