

STATE OF NORTH CAROLINA
DIVISION OF HIGHWAYS

STATE PROJECT REFERENCE NO.	SHEET NO.
37449	TCP-1

**PLAN FOR PROPOSED
TRAFFIC CONTROL, MARKING & DELINEATION
LINCOLN COUNTY**

37449

ROADWAY STANDARD DRAWINGS

THE FOLLOWING ROADWAY STANDARDS AS APPEAR IN "ROADWAY STANDARD DRAWINGS"- ROADWAY DESIGN UNIT-N.C. DEPARTMENT OF TRANSPORTATION-RALEIGH, N.C., DATED JULY 2006 ARE APPLICABLE TO THIS PROJECT AND BY REFERENCE HEREBY ARE CONSIDERED A PART OF THESE PLANS:

STD. NO.	TITLE
1101.02	TEMPORARY LANE CLOSURES
1101.04	TEMPORARY SHOULDER CLOSURES
1101.11	TRAFFIC CONTROL DESIGN TABLES
1110.01	STATIONARY WORK ZONE SIGNS
1110.02	PORTABLE WORK ZONE SIGNS
1130.01	DRUMS
1135.01	CONES
1150.01	FLAGGERS DEVICES
1160.01	TEMPORARY CRASH CUSHION
1165.01	TRUCK MOUNTED IMPACT ATTENUATOR
1170.01	PORTABLE CONCRETE BARRIER
1180.01	SKINNY - DRUM
1205.01	PAVEMENT MARKINGS - LINE TYPES AND OFFSETS
1205.02	PAVEMENT MARKINGS - 2 LANE AND MULTILANE ROADWAYS
1205.04	PAVEMENT MARKINGS - INTERSECTIONS
1205.05	PAVEMENT MARKINGS - TURN LANES
1205.06	PAVEMENT MARKINGS - THRU LANE DROPS
1205.08	PAVEMENT MARKINGS - SYMBOLS AND WORD MESSAGES
1205.09	PAVEMENT MARKINGS - PAINTED ISLANDS
1250.01	PAVEMENT MARKER SPACING
1251.01	RAISED PAVEMENT MARKERS - TEMPORARY AND PERMANENT
1253.01	SNOWPLOWABLE RAISED PAVEMENT MARKERS
1261.01	GUARDRAIL AND BARRIER DELINEATOR SPACING
1261.02	GUARDRAIL AND BARRIER DELINEATOR TYPES
1262.01	GUARDRAIL END DELINEATION
1264.01	OBJECT MARKERS
1264.02	PLACEMENT OF OBJECT MARKERS

INDEX OF SHEETS

SHEET NO.	TITLE
TCP-1	LIST OF APPLICABLE ROADWAY STANDARD DRAWINGS, LEGEND, INDEX OF SHEETS AND TEMPORARY PAVEMENT MARKING SCHEDULE
TCP-2	PROJECT NOTES
TCP-3	PHASE I OVERVIEW AND PHASE I & PHASE II PHASING
TCP-4	PHASE I SECTIONS
TCP-5	PHASE I DETAIL
TCP-6	DETAIL DRAWING FOR TWO-WAY UNDIVIDED AND URBAN FREEWAYS ADVANCE WORK ZONE WARNING SIGNS
PM-1	FINAL PAVEMENT MARKING SCHEDULE
PM-2 AND PM-3	FINAL PAVEMENT MARKING PLAN

LEGEND

- GENERAL**
- DIRECTION OF TRAFFIC FLOW
 - NORTH ARROW
 - PROPOSED PVMT.
 - EXIST. PVMT.
 - PROPOSED CONSTRUCTION
 - REMOVAL OF EXISTING ROAD AND BRIDGE
- TRAFFIC CONTROL DEVICES**
- TYPE III BARRICADE
 - CONE
 - DRUM
 - FLASHING ARROW PANEL (TYPE C)
 - STATIONARY SIGN
 - PORTABLE SIGN
 - STATIONARY OR PORTABLE SIGN
 - WARNING FLAGS
 - CRASH CUSHION
 - CHANGEABLE MESSAGE SIGN
 - TRUCK MOUNTED IMPACT ATTENUATOR (TMIA)
 - POLICE
 - FLAGGER
- PAVEMENT MARKINGS**
- CRYSTAL/CRYSTAL PAVEMENT MARKER
 - YELLOW/YELLOW PAVEMENT MARKER
 - CRYSTAL/RED PAVEMENT MARKER
 - PAVEMENT MARKING SYMBOLS

TEMP. PAV'T. MARKING SCHEDULE

SYMBOL	DESCRIPTION	QUANTITY BREAKDOWN	PAY ITEM	TOTAL QUANTITY
PAVEMENT MARKING LINES				
PA	WHITE EDGELINE 1X	7,200 LF	PAINT (4")	
PB	YELLOW EDGELINE 1X	28 LF		
PD	2ft WHITE MINISKIP 1X	33 LF		
PE	WHITE SOLID LANE LINE 1X	420 LF		
PI	YELLOW DOUBLE CENTER LINE 1X	8,032 LF		
TOTAL 15,713 LF				
P4	WHITE STOP BAR	160 LF	PAINT (24")	
TOTAL 160 LF				
PAVEMENT MARKING SYMBOLS				
QA	LEFT TURN ARROW 1X	4 EA	PAINT SYMBOL	
QE	COMBO STRAIGHT & RIGHT TURN ARROW 1X	4 EA		
TOTAL 8 EA				
PAVEMENT MARKERS				
MH	YELLOW & YELLOW	202 EA	TEMPORARY RAISED	
MI	CRYSTAL & RED	43 EA		
TOTAL 245 EA				

NOTE: FOR EACH PAINT PAVEMENT MARKING ITEM, 1X IMPLIES A SINGLE APPLICATION, 2X IMPLIES TWO APPLICATIONS, AND 3X IMPLIES THREE APPLICATIONS.

TIP PROJECT:

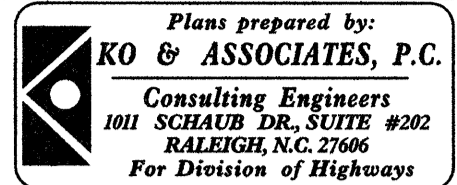
10/16/2007
R:\plans\37449_TC_Top1_title.dgn
Ko & Associates, P.C.

PLAN REVIEWED BY: N.C.D.O.T. WORK ZONE TRAFFIC CONTROL UNIT		APPROVED: <i>Michael Rzepka</i>	PLAN PREPARED FOR N.C.D.O.T. BY:
		DATE: 10-16-07	
J. S. BOURNE, P.E.	WORK ZONE TRAFFIC CONTROL ENGINEER	SEAL 	M. T. RZEPKA, P.E. PROJECT ENGINEER
J. ISHAK, PE	TRAFFIC CONTROL PROJECT ENGINEER		M. T. RZEPKA, P.E. DESIGN ENGINEER
J. PORTANOVA, PE	TRAFFIC CONTROL PROJ. DESIGN ENGINEER		B. L. MARIOTTE DESIGN TECHNICIAN
	TRAFFIC CONTROL DESIGN ENGINEER		
	TRAFFIC CONTROL DESIGN TECHNICIAN		

GENERAL NOTES

PROJECT NOTES

PROJ. REFERENCE NO.	SHEET NO.
37449	TCP-2



CHANGES MAY BE REQUIRED WHEN PHYSICAL DIMENSIONS IN THE DETAIL DRAWINGS, STANDARD DETAILS AND ROADWAY DETAILS ARE NOT ATTAINABLE TO MEET FIELD CONDITIONS, OR RESULT IN DUPLICATE, OR UNDESIRED OVERLAPPING OF DEVICES. MODIFICATION MAY INCLUDE: MOVING, SUPPLEMENTING, COVERING OR REMOVAL OF DEVICES, AS DIRECTED BY THE ENGINEER.

THE FOLLOWING GENERAL NOTES APPLY AT ALL TIMES FOR THE DURATION OF THE CONSTRUCTION PROJECT, EXCEPT WHEN OTHERWISE NOTED IN THE PLAN, OR DIRECTED BY THE ENGINEER.

TIME RESTRICTIONS

A) DO NOT CLOSE OR NARROW TRAVEL LANES AS FOLLOWS:

ROAD NAME	DAY AND TIME RESTRICTIONS
NC 16	6:00 AM TO 7:00 PM
NC 73	MONDAY THROUGH SUNDAY

B) DO NOT CLOSE OR NARROW TRAVEL LANES DURING HOLIDAYS AND SPECIAL EVENTS AS FOLLOWS:

ROAD NAME
NC 16
NC 73

HOLIDAY

- FOR ANY UNEXPECTED OCCURRENCE THAT CREATES UNUSUALLY HIGH TRAFFIC VOLUMES, AS DIRECTED BY THE ENGINEER.
- FOR NEW YEAR'S, BETWEEN THE HOURS OF 6:00 A.M. DECEMBER 31st TO 7:00 P.M. JANUARY 2ND. IF NEW YEAR'S DAY IS ON A FRIDAY, SATURDAY, SUNDAY, OR MONDAY THEN UNTIL 7:00 P.M. THE FOLLOWING TUESDAY.
- FOR EASTER, BETWEEN THE HOURS OF 6:00 A.M. THURSDAY AND 7:00 P.M. MONDAY.
- FOR MEMORIAL DAY, BETWEEN THE HOURS OF 6:00 A.M. FRIDAY TO 7:00 P.M. TUESDAY.
- FOR INDEPENDENCE DAY, BETWEEN THE HOURS OF 6:00 A.M. THE DAY BEFORE INDEPENDENCE DAY AND 7:00 P.M. THE DAY AFTER INDEPENDENCE DAY.
IF INDEPENDENCE DAY IS ON A FRIDAY, SATURDAY, SUNDAY OR MONDAY THEN BETWEEN THE HOURS OF 6:00 A.M. THE THURSDAY BEFORE INDEPENDENCE DAY AND 7:00 P.M. THE TUESDAY AFTER INDEPENDENCE DAY.
- FOR LABOR DAY, BETWEEN THE HOURS OF 6:00 A.M. FRIDAY AND 7:00 P.M. TUESDAY.
- FOR THANKSGIVING DAY, BETWEEN THE HOURS OF 6:00 A.M. TUESDAY TO 7:00 P.M. MONDAY.
- FOR CHRISTMAS, BETWEEN THE HOURS OF 6:00 A.M. THE FRIDAY BEFORE THE WEEK OF CHRISTMAS DAY AND 7:00 P.M. THE FOLLOWING TUESDAY AFTER THE WEEK OF CHRISTMAS.
- FOR DENVER DAYS FESTIVAL, BETWEEN THE HOURS OF 6:00 A.M. THE DAY BEFORE DENVER DAYS FESTIVAL BEGINS AND 7:00 P.M. THE DAY AFTER DENVER DAYS FESTIVAL ENDS. FOR EXACT DATES AND TIMES OF THE FESTIVAL, CONTACT THE DISTRICT ENGINEER AT (704) 748-2400.

C) DO NOT CONDUCT ANY HAULING OPERATIONS AGAINST THE FLOW OF TRAFFIC OF AN OPEN TRAVELWAY UNLESS THE HAULING OPERATION IS PROTECTED BY BARRIER OR GUARDRAIL OR AS DIRECTED BY THE ENGINEER.

LANE AND SHOULDER CLOSURE REQUIREMENTS

- D) REMOVE LANE CLOSURE DEVICES FROM THE LANE WHEN WORK IS NOT BEING PERFORMED BEHIND THE LANE CLOSURE OR WHEN A LANE CLOSURE IS NO LONGER NEEDED, OR AS DIRECTED BY THE ENGINEER.
- E) WHEN PERSONNEL AND/OR EQUIPMENT ARE WORKING WITHIN 15 FT OF AN OPEN TRAVEL LANE, CLOSE THE NEAREST OPEN SHOULDER USING ROADWAY STANDARD DRAWING NO. 1101.04 UNLESS THE WORK AREA IS PROTECTED BY BARRIER OR GUARDRAIL OR A LANE CLOSURE IS INSTALLED.

- F) WHEN PERSONNEL AND/OR EQUIPMENT ARE WORKING WITHIN A LANE OF TRAVEL OF AN UNDIVIDED OR DIVIDED FACILITY, CLOSE THE LANE ACCORDING TO THE TRAFFIC CONTROL PLANS, ROADWAY STANDARD DRAWINGS OR AS DIRECTED BY THE ENGINEER. CONDUCT THE WORK SO THAT ALL PERSONNEL AND/OR EQUIPMENT REMAIN WITHIN THE CLOSED TRAVEL LANE.
- G) DO NOT WORK SIMULTANEOUSLY WITHIN 15 FT ON BOTH SIDES OF AN OPEN TRAVELWAY, RAMP OR LOOP WITHIN THE SAME LOCATION UNLESS PROTECTED WITH GUARDRAIL OR BARRIER.
- H) DO NOT INSTALL MORE THAN ONE LANE CLOSURE, IN ANY ONE DIRECTION, ON NC 16 AND NC 73.

PAVEMENT EDGE DROP OFF REQUIREMENTS

I) BACKFILL AT A 6:1 SLOPE UP TO THE EDGE AND ELEVATION OF EXISTING PAVEMENT IN AREAS ADJACENT TO AN OPENED TRAVEL LANE THAT HAS AN EDGE OF PAVEMENT DROP-OFF AS FOLLOWS:

BACKFILL DROP-OFFS THAT EXCEED 2 INCHES ON ROADWAYS WITH POSTED SPEED LIMITS OF 45 MPH OR GREATER.

BACKFILL DROP-OFFS THAT EXCEED 3 INCHES ON ROADWAYS WITH POSTED SPEED LIMITS LESS THAN 45 MPH.

BACKFILL WITH SUITABLE COMPACTED MATERIAL, AS APPROVED BY THE ENGINEER, AT NO EXPENSE TO THE DEPARTMENT.

J) DO NOT EXCEED A DIFFERENCE OF 2 INCHES IN ELEVATION BETWEEN OPEN LANES OF TRAFFIC FOR NOMINAL LIFTS OF 1.5 INCHES. INSTALL ADVANCE WARNING "UNEVEN LANES" SIGNS (W8-11) 350 FT. IN ADVANCE AND A MINIMUM OF EVERY HALF MILE THROUGHOUT THE UNEVEN AREA.

TRAFFIC PATTERN ALTERATIONS

K) NOTIFY THE ENGINEER TWENTY ONE (21) CALENDAR DAYS PRIOR TO ANY TRAFFIC PATTERN ALTERATION.

SIGNING

- L) INSTALL ADVANCE WORK ZONE WARNING SIGNS WHEN WORK IS WITHIN 40 FT FROM THE EDGE OF TRAVEL LANE AND NO MORE THAN THREE (3) DAYS PRIOR TO THE BEGINNING OF CONSTRUCTION.
- M) STATE FORCES WILL BE RESPONSIBLE FOR PERMANENT SIGNING.
- N) ENSURE ALL NECESSARY SIGNING IS IN PLACE PRIOR TO ALTERING ANY TRAFFIC PATTERN.
- O) INSTALL BLACK ON ORANGE "DIP" SIGNS (W8-2) AND/OR "BUMP" SIGNS (W8-1) 200 FT. IN ADVANCE OF THE UNEVEN AREA, OR AS DIRECTED BY THE ENGINEER.

TRAFFIC BARRIER

P) INSTALL TEMPORARY BARRIER ACCORDING TO THE TRAFFIC CONTROL PLANS A MAXIMUM OF TWO (2) WEEKS PRIOR TO BEGINNING WORK IN ANY LOCATION. ONCE TEMPORARY BARRIER IS INSTALLED AT ANY LOCATION, PROCEED IN A CONTINUOUS MANNER TO COMPLETE THE PROPOSED WORK IN THAT LOCATION UNLESS OTHERWISE STATED IN THE TRAFFIC CONTROL PLANS OR AS DIRECTED BY THE ENGINEER.

DO NOT PLACE BARRIER DIRECTLY ON ANY SURFACE OTHER THAN ASPHALT OR CONCRETE.

ONCE TEMPORARY BARRIER IS INSTALLED AT ANY LOCATION AND NO WORK IS PERFORMED BEHIND THE TEMPORARY BARRIER FOR A PERIOD LONGER THAN TWO (2) MONTHS, REMOVE/RESET TEMPORARY BARRIER AT NO COST TO THE DEPARTMENT UNLESS OTHERWISE STATED IN THE TRAFFIC CONTROL PLANS, TEMPORARY BARRIER IS PROTECTING A HAZARD, OR AS DIRECTED BY THE ENGINEER.

INSTALL TEMPORARY BARRIER WITH THE TRAFFIC FLOW, BEGINNING WITH THE UPSTREAM SIDE OF TRAFFIC. REMOVE TEMPORARY BARRIER AGAINST THE TRAFFIC FLOW, BEGINNING WITH THE DOWNSTREAM SIDE OF TRAFFIC.

INSTALL AND SPACE DRUMS NO GREATER THAN TWICE THE POSTED SPEED LIMIT (MPH) TO CLOSE OR KEEP THE SECTION OF THE ROADWAY CLOSED UNTIL THE TEMPORARY BARRIER CAN BE PLACED OR AFTER THE TEMPORARY BARRIER IS REMOVED.

Q) PROTECT THE APPROACH END OF MOVABLE/PORTABLE CONCRETE BARRIER AT ALL TIMES DURING THE INSTALLATION AND REMOVAL OF THE BARRIER BY EITHER A TRUCK MOUNTED IMPACT ATTENUATOR (MAXIMUM 72 HOURS) OR A TEMPORARY CRASH CUSHION.

PROTECT THE APPROACH END OF MOVABLE/PORTABLE CONCRETE BARRIER FROM ONCOMING TRAFFIC AT ALL TIMES BY A TEMPORARY CRASH CUSHION UNLESS THE APPROACH END OF MOVABLE/PORTABLE CONCRETE BARRIER IS OFFSET FROM ONCOMING TRAFFIC AS FOLLOWS OR AS SHOWN IN THE PLANS:

POSTED SPEED LIMIT	MINIMUM OFFSET
40 OR LESS	15 FT
45 - 50	20 FT
55	25 FT
60 MPH or HIGHER	30 FT

TRAFFIC CONTROL DEVICES

R) SPACE CHANNELIZING DEVICES IN WORK AREAS NO GREATER THAN TWICE THE POSTED SPEED LIMIT (MPH), EXCEPT 10 FT ON-CENTER IN RADIUS, AND 3 FT OFF THE EDGE OF AN OPEN TRAVELWAY, WHEN LANE CLOSURES ARE NOT IN EFFECT. WHEN SKINNY DRUMS ARE ALLOWED, REFER TO SECTION 1180 OF STANDARD SPECIFICATIONS FOR ROADS AND STRUCTURES OR AS SHOWN IN THE PLANS.

PAVEMENT MARKINGS AND MARKERS

S) INSTALL PAVEMENT MARKINGS AND PAVEMENT MARKERS ON THE FINAL SURFACE AS FOLLOWS:

ROAD NAME	MARKING	MARKER
ALL ROADS	THERMOPLASTIC	SNOWPLOWABLE

T) INSTALL TEMPORARY PAVEMENT MARKINGS AND TEMPORARY PAVEMENT MARKERS ON INTERIM LAYERS OF PAVEMENT AS FOLLOWS:

ROAD NAME	MARKING	MARKER
ALL ROADS	PAINT	TEMPORARY RAISED

U) PLACE ONE APPLICATION OF PAINT FOR TEMPORARY TRAFFIC PATTERNS. PLACE A SECOND APPLICATION OF PAINT SIX (6) MONTHS AFTER THE INITIAL APPLICATION AND EVERY SIX MONTHS AS DIRECTED BY THE ENGINEER.

V) TIE PROPOSED PAVEMENT MARKING LINES TO EXISTING PAVEMENT MARKING LINES.

W) REMOVE/REPLACE ANY CONFLICTING/DAMAGED PAVEMENT MARKINGS AND MARKERS BY THE END OF EACH DAY'S OPERATION.

X) TRACE THE PROPOSED MONOLITHIC ISLAND LOCATIONS WITH PROPER COLOR PAVEMENT MARKINGS PRIOR TO INSTALLATION. PLACE DRUMS TO DELINEATE ANY PROPOSED MONOLITHIC ISLANDS BEFORE INSTALLATION.

TEMPORARY / FINAL SIGNALS

Y) NOTIFY THE ENGINEER TWO (2) MONTHS BEFORE A TRAFFIC SIGNAL INSTALLATION BY OTHERS IS REQUIRED.

Z) OTHERS WILL SHIFT AND REVISE ALL SIGNAL HEADS AS SHOWN ON THE SIGNAL PLANS.

MISCELLANEOUS

AA) POLICE MAY BE USED TO MAINTAIN TRAFFIC THROUGH THE WORK AREA AND/OR INTERSECTIONS, AS DIRECTED BY THE ENGINEER.

APPROVED: <i>Michael T. Vlezina</i> DATE: 10-16-07		<h2>PROJECT NOTES</h2>	
SEAL			
SCALE: NONE	DATE: 10-07		
DWG. BY: BLM	DESIGN BY: BLM		
REVIEWED BY: MTR			

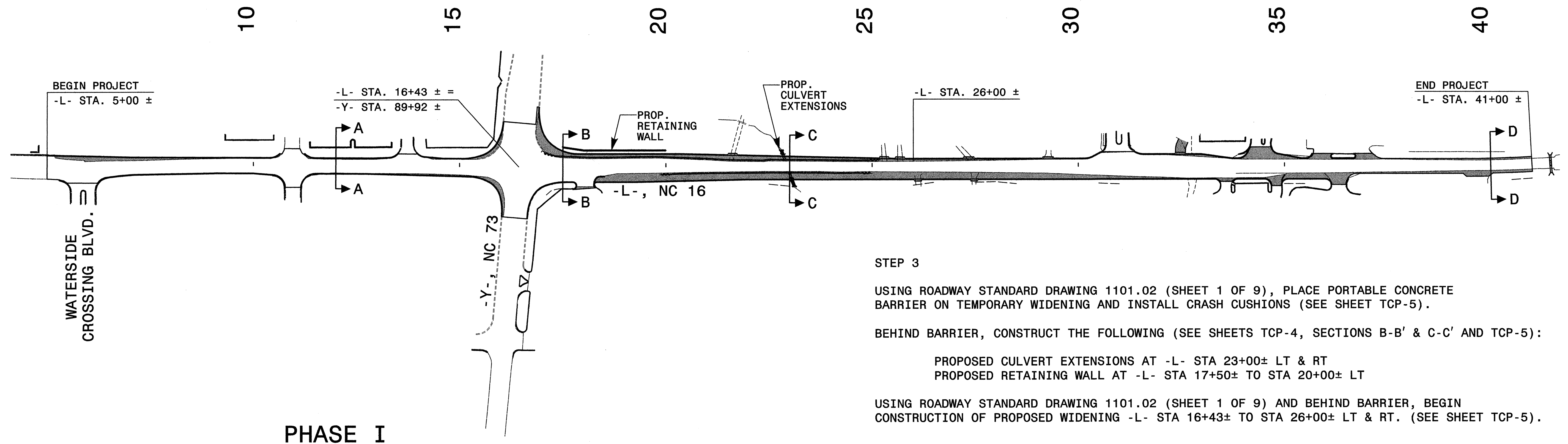
PHASE I OVERVIEW

PROJ. REFERENCE NO. SHEET NO.

37449

TCP-3

Plans prepared by:
KO & ASSOCIATES, P.C.
 Consulting Engineers
 101 SCHAUB DR., SUITE #202
 RALEIGH, N.C. 27606
 For Division of Highways



PHASE I

STEP 1

INSTALL ALL ADVANCED WORK ZONE WARNING SIGNS (SEE SHEET TCP-6).

STEP 2

USING ROADWAY STANDARD DRAWING 1101.02 (SHEET 1 OF 9) AND AWAY FROM TRAFFIC, BEGIN INSTALLATION OF PROPOSED DRAINAGE INCLUDING CROSS PIPES.

USING ROADWAY STANDARD DRAWING 1101.02 (SHEET 1 OF 9), BEGIN PROPOSED WIDENING UP TO EDGE AND ELEVATION OF EXISTING PAVEMENT AT THE FOLLOWING LOCATIONS (SEE SHEET TCP-4):

- L- STA 5+00± TO STA 16+43± (SEE SECTION A-A')
- L- STA 26+00± TO STA 41+00± (SEE SECTION D-D')

CONSTRUCT TEMPORARY 4' WIDENING OF EXISTING PAVEMENT FOR PORTABLE CONCRETE BARRIER PLACEMENT AT THE FOLLOWING LOCATIONS (SEE SHEETS TCP-4, SECTIONS B-B' & C-C' AND TCP-5):

- L- STA 17+00± TO STA 25+20± LT
- L- STA 19+85± TO STA 25+00± RT

AWAY FROM TRAFFIC, BEGIN INSTALLATION OF PROPOSED SIGNALS (BY OTHERS).

STEP 3

USING ROADWAY STANDARD DRAWING 1101.02 (SHEET 1 OF 9), PLACE PORTABLE CONCRETE BARRIER ON TEMPORARY WIDENING AND INSTALL CRASH CUSHIONS (SEE SHEET TCP-5).

BEHIND BARRIER, CONSTRUCT THE FOLLOWING (SEE SHEETS TCP-4, SECTIONS B-B' & C-C' AND TCP-5):

- PROPOSED CULVERT EXTENSIONS AT -L- STA 23+00± LT & RT
- PROPOSED RETAINING WALL AT -L- STA 17+50± TO STA 20+00± LT

USING ROADWAY STANDARD DRAWING 1101.02 (SHEET 1 OF 9) AND BEHIND BARRIER, BEGIN CONSTRUCTION OF PROPOSED WIDENING -L- STA 16+43± TO STA 26+00± LT & RT. (SEE SHEET TCP-5).

STEP 4

USING ROADWAY STANDARD DRAWING 1101.02 (SHEET 1 OF 9), COMPLETE THE FOLLOWING:

- REMOVE PCB LEFT & RIGHT OF -L-
- COMPLETE PROPOSED WIDENING FROM -L- STA 16+43± TO STA 26+00± LT & RT.
- RESURFACE/WEDGE EXISTING PAVEMENT UP TO BUT NOT INCLUDING THE FINAL LAYER OF SURFACE COURSE FROM -L- STA 5+00± TO STA 41+00±.
- COMPLETE INSTALLATION OF DRAINAGE BEGUN IN STEP 2
- COMPLETE PROPOSED WIDENING BEGUN IN STEPS 2 & 3.
- COMPLETE INSTALLATION OF PROPOSED SIGNALS (BY OTHERS) AND ACTIVATE FOR TRAFFIC IN EXISTING PATTERN (SIGNAL HEADS IN TEMPORARY POSITION).

PHASE II

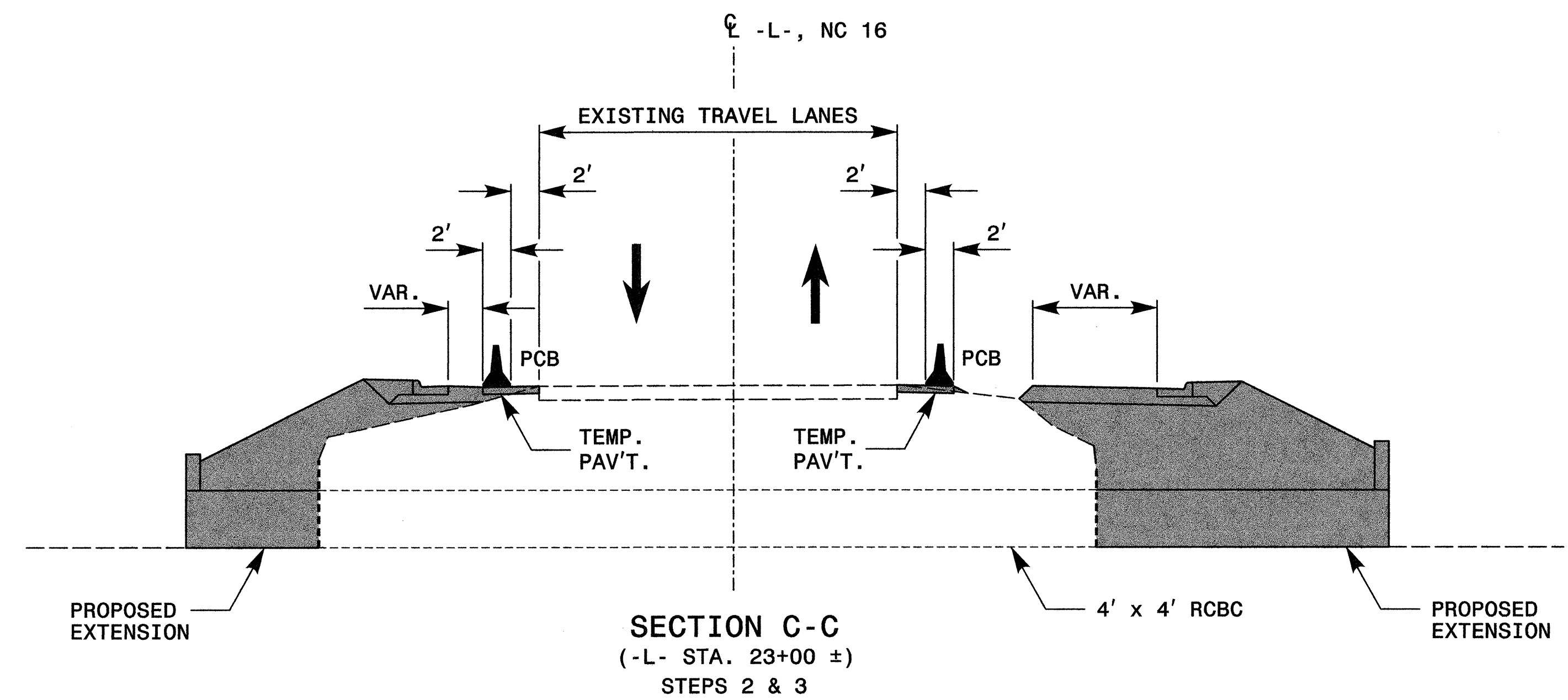
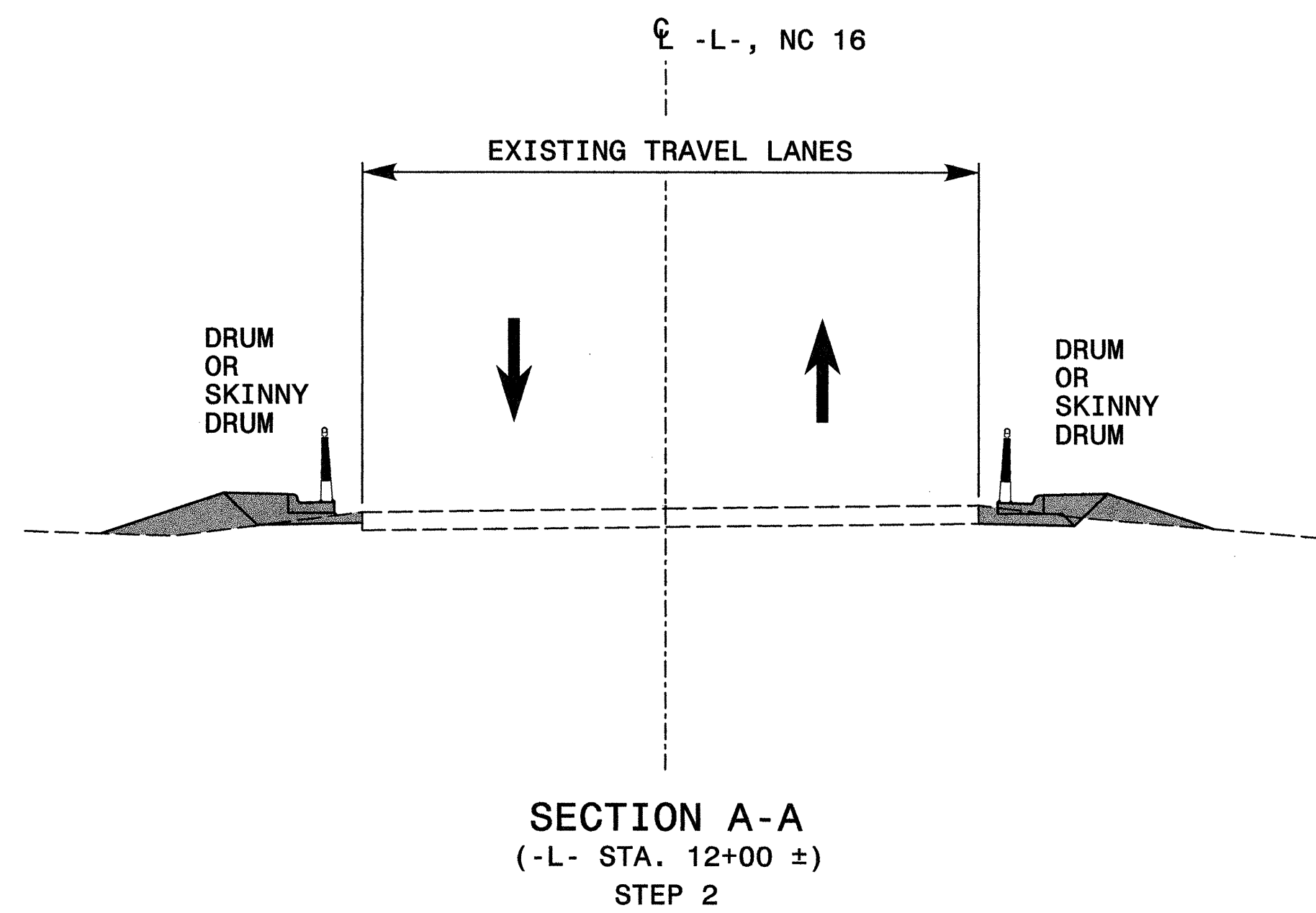
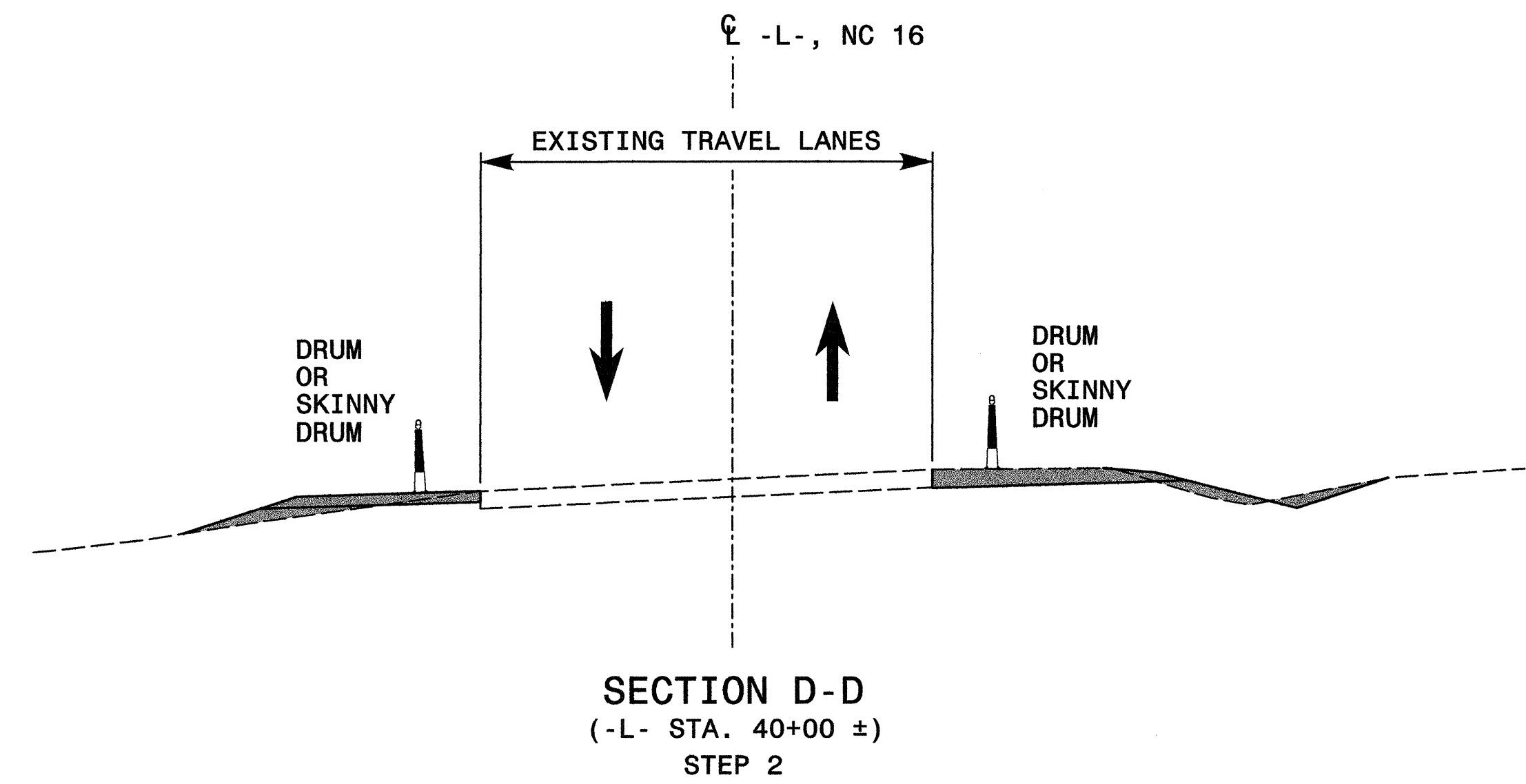
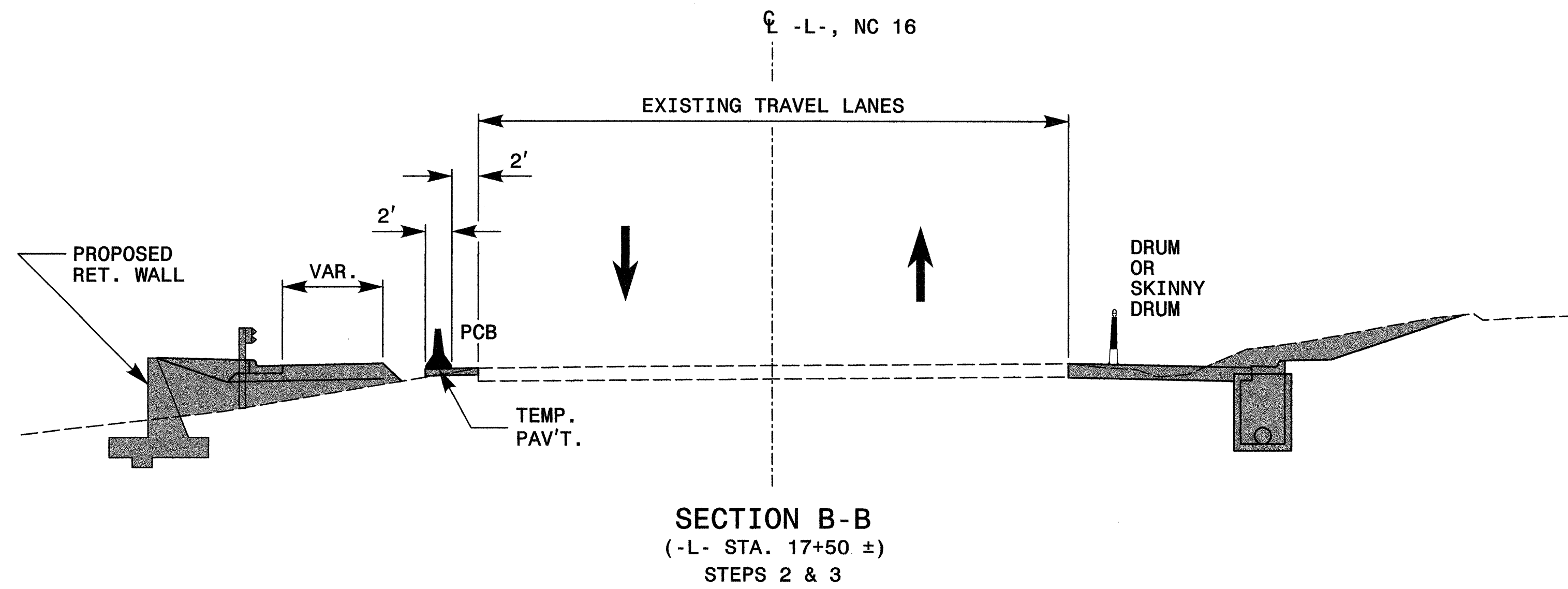
USING ROADWAY STANDARD DRAWING 1101.02 (SHEET 1 OF 9), COMPLETE THE FOLLOWING:

- PLACE FINAL LAYER OF SURFACE COURSE.
- INSTALL FINAL PAVEMENT MARKINGS AND MARKERS.
- ADJUST PROPOSED SIGNAL HEADS TO FINAL CONDITION (BY OTHERS) AND OPEN -L- AND -Y- TO PROPOSED TRAFFIC PATTERN.
- REMOVE REMAINING TRAFFIC CONTROL DEVICES.

LEGEND

PROPOSED CONSTRUCTION

APPROVED: <i>Muller</i> DATE: 10-16-07		PHASE I OVERVIEW AND PHASES I & II PHASING					
SEAL		SCALE: NONE DATE: 10-07 DWG. BY: MTR DESIGN BY: MTR REVIEWED BY: MTR	<table border="1" style="width: 100%; border-collapse: collapse;"> <thead> <tr> <th style="text-align: left; padding: 2px;">REVISIONS</th> </tr> </thead> <tbody> <tr> <td style="height: 20px;"> </td> </tr> <tr> <td style="height: 20px;"> </td> </tr> <tr> <td style="height: 20px;"> </td> </tr> </tbody> </table>	REVISIONS			
REVISIONS							



LEGEND	
	PROPOSED CONSTRUCTION

APPROVED: *Michael T. Rzepka* DATE: 10-16-07

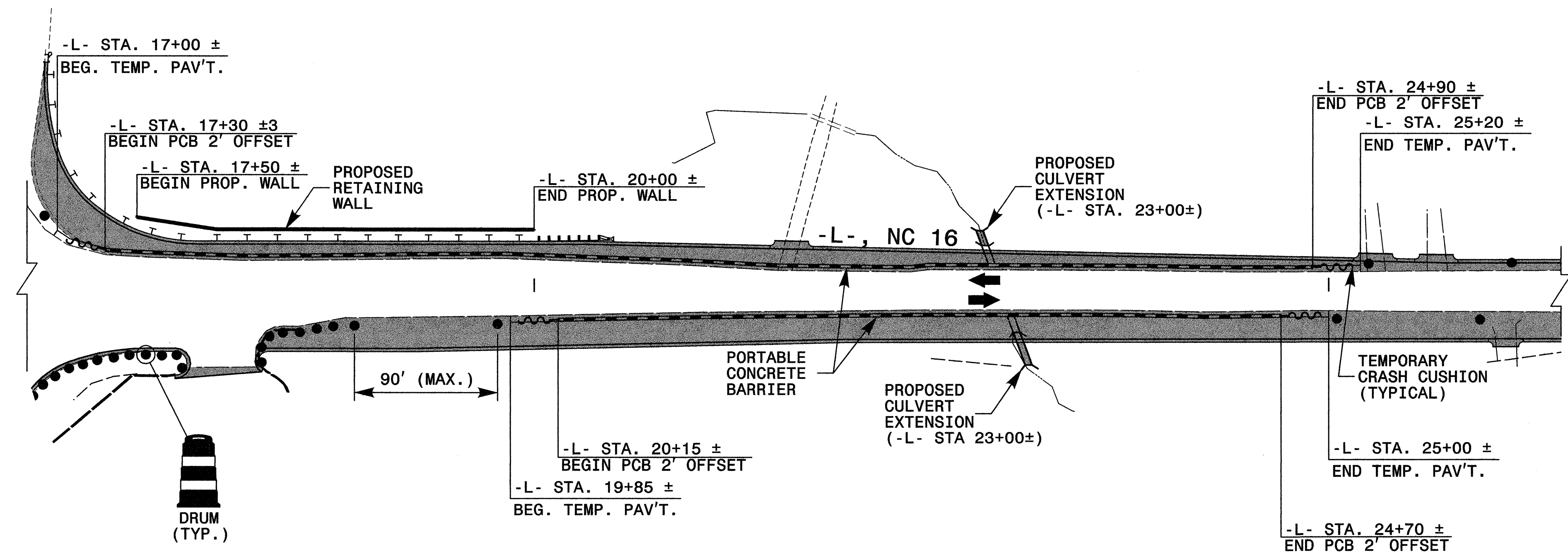
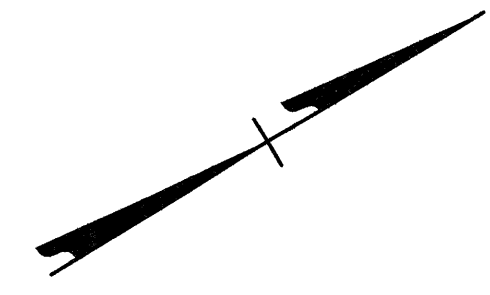
SEAL

PHASE I SECTIONS		REVISIONS
SCALE:	NONE	
DATE:	10-07	
DWG. BY:	BLM	
DESIGN BY:	MTR	
REVIEWED BY:	MTR	

10/16/2007
 R:\Plans\37449_TCP-4.dgn
 KO & ASSOCIATES, P.C.

20

25



10/16/2007
 R:\Plans\37449_TC-5\cp5.dgn
 KO & ASSOCIATES, P.C.

LEGEND

PROPOSED CONSTRUCTION

APPROVED: *Michael T. Rzepka* DATE: 10-16-07

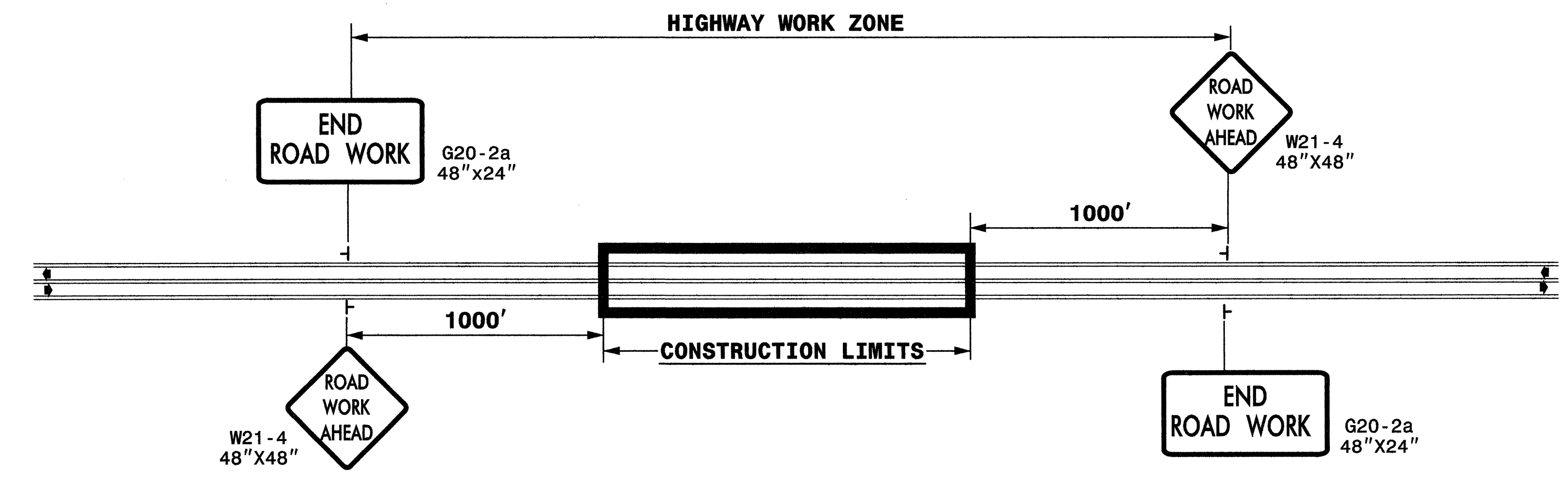
SEAL

PHASE I DETAIL

SCALE: NONE		<table border="1"> <tr> <th colspan="2">REVISIONS</th> </tr> <tr> <td> </td> <td> </td> </tr> <tr> <td> </td> <td> </td> </tr> <tr> <td> </td> <td> </td> </tr> </table>	REVISIONS							
REVISIONS										
DATE: 10-07										
DWG. BY: BLM										
DESIGN BY: BLM										
REVIEWED BY: MTR	CADD FILE									

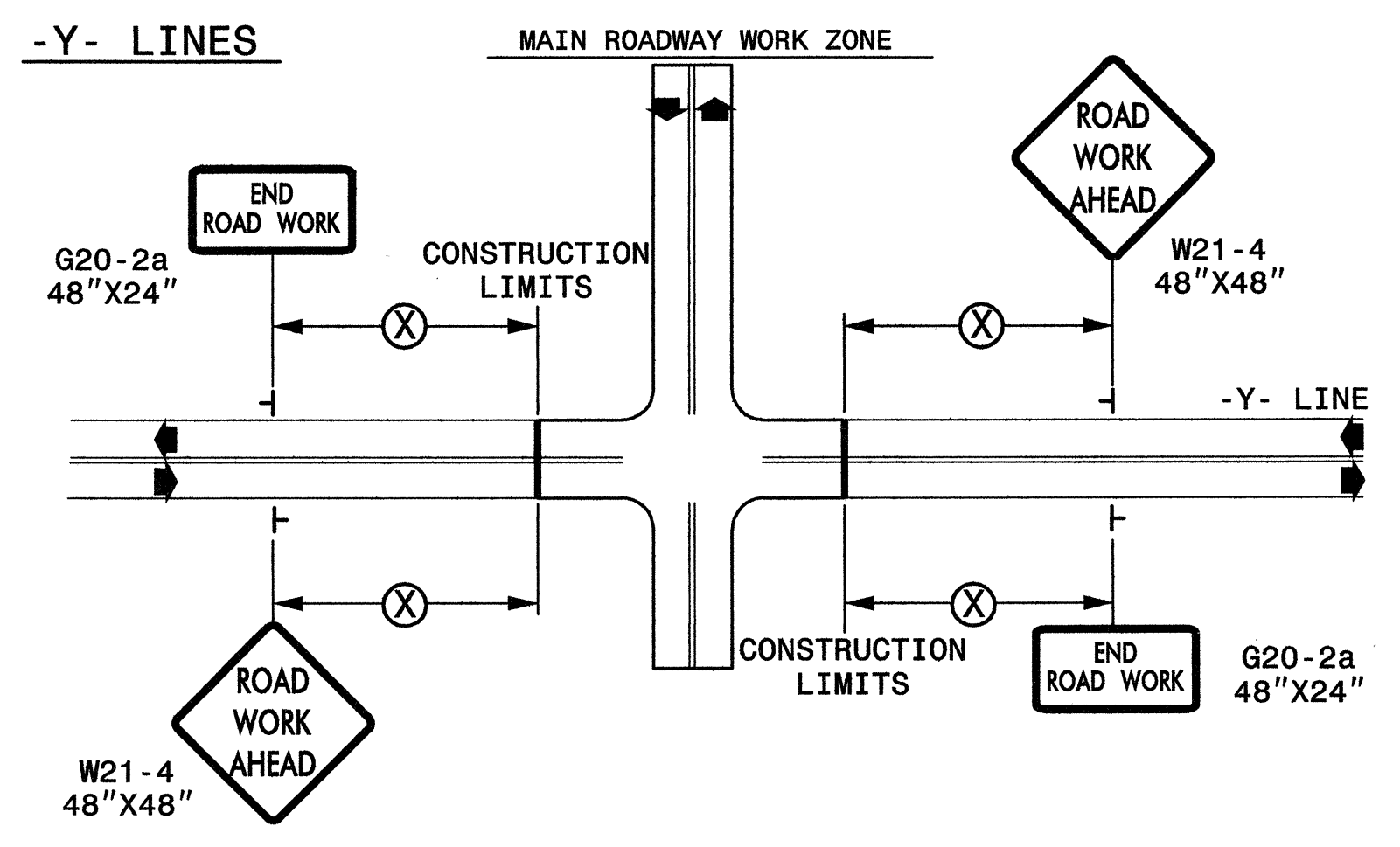
Plans prepared by:
KO & ASSOCIATES, P.C.
 Consulting Engineers
 101 SCHAUB DR., SUITE #202
 RALEIGH, N.C. 27606
 For Division of Highways

TWO-WAY UNDIVIDED ** (L-LINES)



STATE OF NORTH CAROLINA
 DEPT. OF TRANSPORTATION
 DIVISION OF HIGHWAYS
 RALEIGH, N.C.

ROADWAYS INTERSECTING ALONG 2 WAY UNDIVIDED WORK ZONE (Y-LINES)



**DETAIL DRAWING FOR
 TWO-WAY UNDIVIDED
 WORK ZONE WARNING SIGNS**

GENERAL NOTES

- USE FLUORESCENT ORANGE SHEETING (TYPE VII OR HIGHER) ON ALL ADVANCED WORK ZONE SIGNS.
- DO NOT INSTALL ADVANCE WARNING SIGNS MORE THAN 3 DAYS PRIOR TO BEGINNING OF WORK.
- SIGNS SHOWN ARE REQUIRED FOR WORK ZONES THAT WILL REMAIN IN EFFECT OVERNIGHT. FOR SHORT-TERM DAILY MAINTENANCE TYPE OPERATIONS, THIS SIGNING APPLICATION IS OPTIONAL; MAY USE ONLY APPLICABLE ROADWAY STANDARD DRAWINGS INSTEAD. HOWEVER, IF THIS SIGNING APPLICATION IS USED, SIGNS MAY BE PORTABLE MOUNTED.
- ALL SIGN SPACING DIMENSIONS ARE APPROXIMATE, FIELD ADJUST AS NECESSARY OR AS DIRECTED.
- USE 3LB STEEL U-CHANNEL POST OR 4" X 4" WOOD POST FOR ALL WORK ZONE SIGNS. 3LB STEEL U-CHANNEL POSTS MUST MEET THE REQUIREMENTS OF STANDARD SPECIFICATION SECTION 1094-1(B), MAY BE GALVANIZED STEEL, OR MAY BE PAINTED GREEN BY THE POST MANUFACTURER. SQUARE STEEL TUBING POSTS HAVING EQUIVALENT STRENGTH OF THE 3 LB STEEL U-CHANNEL POST ARE ALSO ACCEPTABLE FOR USE. ERECT SIGNS PER ROADWAY STANDARD DRAWING 1110.01. PAYMENT FOR WOOD POSTS, 3LB STEEL U-CHANNEL AND SQUARE STEEL TUBING POSTS WITH SIGNS WILL BE MADE ACCORDING TO STANDARD SPECIFICATION "WORK ZONE SIGNS" SECTION 1110.
- WHEN NECESSARY, USE SPLICING IN ACCORDANCE WITH ROADWAY STANDARD DRAWING NO. 1110.01. REMOVE ENTIRE POST WHEN REMOVING SIGNS WITH SPLICED POSTS.
- DO NOT BACK BRACE SIGN SUPPORTS.
- ** TWO-WAY UNDIVIDED ADVANCE WARNING SIGN CONFIGURATION MAY BE USED ON URBAN MULTI-LANE FACILITIES WHERE CONDITIONS LIMIT THE USE OF DUAL MOUNTED SIGNS AS DETERMINED BY THE ENGINEER.

LEGEND

STATIONARY SIGN
 DIRECTION OF TRAFFIC FLOW

SHEET 1 OF 1

APPROVED: <i>Michel Rzepka</i> DATE: 10-16-07	DETAIL DRAWING FOR TWO-WAY UNDIVIDED AND URBAN FREEWAYS ADVANCED WORK ZONE WARNING SIGNS	
	SCALE: NONE	
	DATE:	
	DWG. BY: BLM	
	DESIGN BY: BLM	
REVIEWED BY: MTR	REVISIONS	

10/16/2007
 R:\bloms\37449_TC_Tcp6_wzws.dgn
 KO & Associates, P.C.