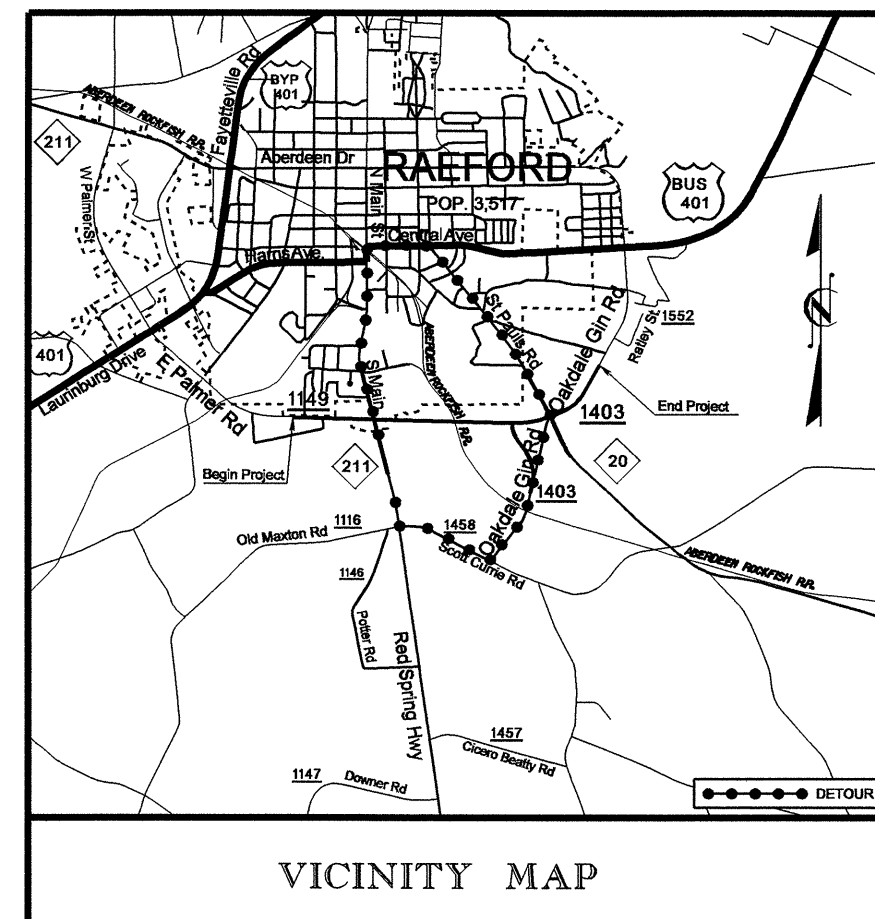


STATE OF NORTH CAROLINA  
DIVISION OF HIGHWAYS

**UTILITY CONSTRUCTION PLANS  
HOKE COUNTY**

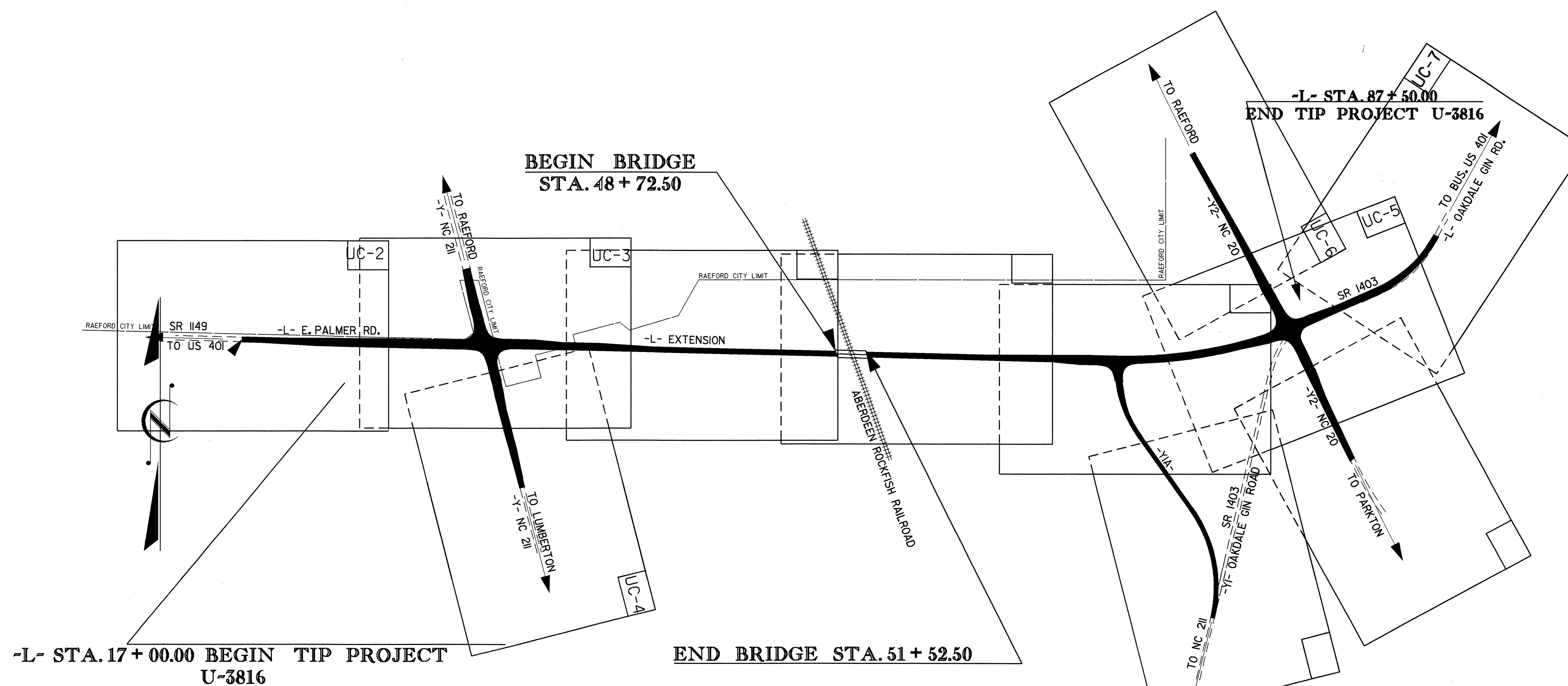
**LOCATION: PALMER STREET EXTENSION FROM NC 211  
AT SR 1149 TO NC 20 AT SR 1403**

**TYPE OF WORK: WATER AND SEWER LINE  
RELOCATION**



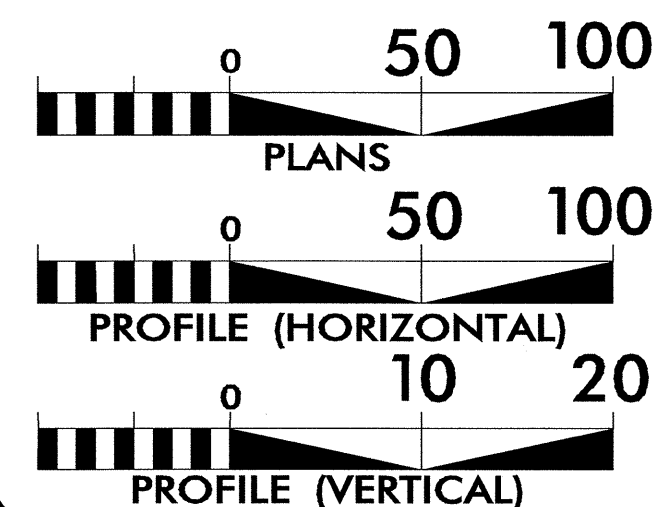
VICINITY MAP

**TIP PROJECT: U-3816**



2006 STANDARD SPECIFICATION FOR ROADS AND STRUCTURE  
ALL SEWER PIPE 4" AND LARGER WILL BE DI, PC 350  
ALL THE WATER PIPE 4" AND LARGER WILL BE PVC, SDR 21

**GRAPHIC SCALES**



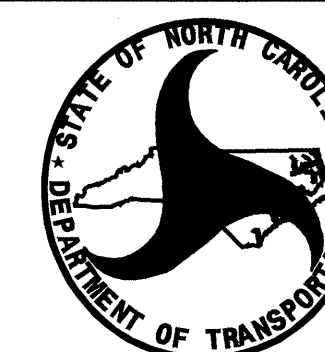
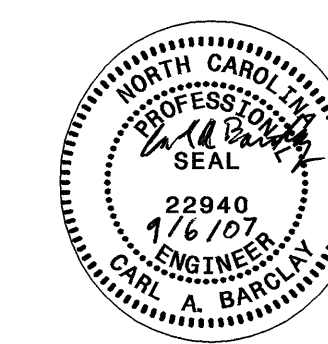
**INDEX OF SHEETS**

SHEET NO.	DESCRIPTION
UC-1	TITLE SHEET
UC-2 THRU UC-7	UTILITY CONSTRUCTION PLAN SHEETS
UC-8	PROFILE SHEET
UC-9	DETAILS SHEET

**WATER AND SEWER OWNERS ON PROJECT**

- (1) WATER HOKE COUNTY AND CITY OF RAEFORD
- (2) SANITARY SEWER CITY OF RAEFORD

SEAL



PREPARED IN THE OFFICE OF:  
**DIVISION OF HIGHWAYS  
PROJECT SERVICES  
UTILITY SECTION**  
1591 MAIL SERVICES CENTER  
RALEIGH NC 27699-1591  
PHONE (919) 250-4128  
FAX (919) 250-4119

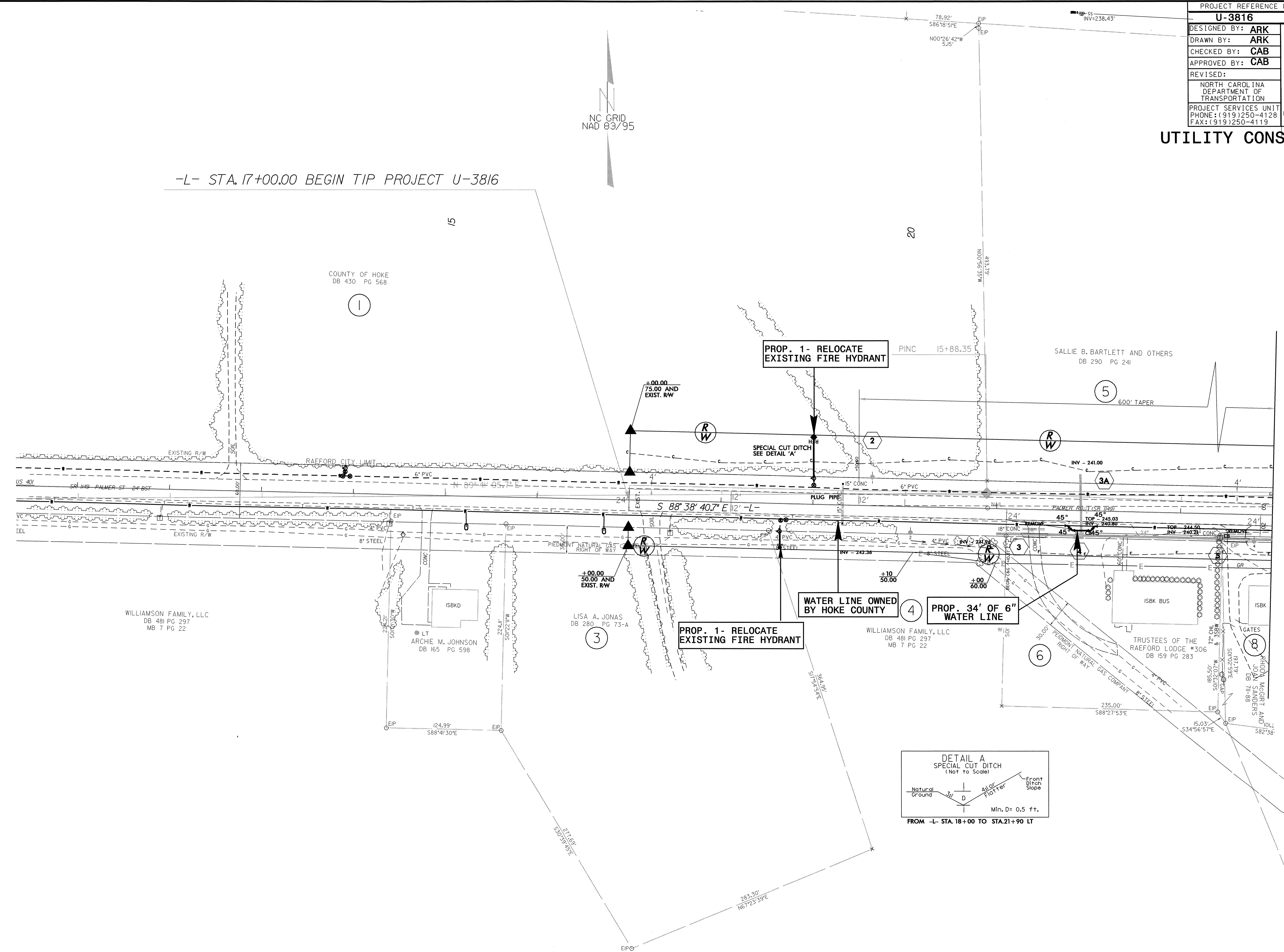
**Roger Worthington, P.E.** UTILITIES SECTION ENGINEER  
**Carl Barclay, P.E.** UTILITIES SQUAD LEADER PROJECT ENGINEER  
**Ali Kouchehi, P.E.** UTILITIES PROJECT DESIGNER

8/17/09

PROJECT REFERENCE NO.	SHEET NO.
<b>U-3816</b>	<b>UC-2</b>
DESIGNED BY: <b>ARK</b>	
DRAWN BY: <b>ARK</b>	
CHECKED BY: <b>CAB</b>	
APPROVED BY: <b>CAB</b>	
REVISED:	
NORTH CAROLINA DEPARTMENT OF TRANSPORTATION	
PROJECT SERVICES UNIT PHONE: (919)250-4128 FAX: (919)250-4119	
UTILITY CONSTRUCTION PLANS ONLY	

# UTILITY CONSTRUCTION

-L- STA. 17+00.00 BEGIN TIP PROJECT U-3816

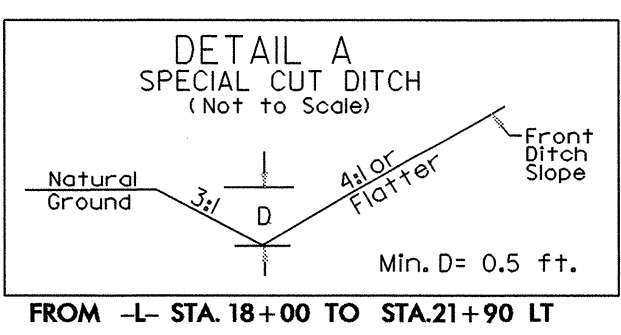


**PROP. 1 - RELOCATE EXISTING FIRE HYDRANT**

**PROP. 1 - RELOCATE EXISTING FIRE HYDRANT**

**WATER LINE OWNED BY HOKE COUNTY**

**PROP. 34' OF 6\"/>**



MATCHLINE STA. 24+00.00 -L- SEE SHEET UC-3

OC-SEP-2007 08:45 \\u3816\_rdu\_psh4\_uc\_2.dgn



PROJECT REFERENCE NO.	SHEET NO.
U-3816	UC-3
DESIGNED BY: ARK	
DRAWN BY: ARK	
CHECKED BY: CAB	
APPROVED BY: CAB	
REVISED:	
NORTH CAROLINA DEPARTMENT OF TRANSPORTATION PROJECT SERVICES UNIT PHONE: (919) 250-4128 FAX: (919) 250-4119	
UTILITY CONSTRUCTION PLANS ONLY	

**UTILITY CONSTRUCTION**

SEWER LINE OWNED BY CITY OF REAFORD

BREAK DOWN PLUG AND FILL 3 ABANDONED UTILITY MANHOLE SEE BDPF

PROP. 4' DIA MANHOLE "1 B" STA. 1+114.5 LINE 1  
30' LT OF -Y- STA. 18+00

PROP. 1-RELOCATE EXISTING FIRE HYDRANT

PROP. 100.7' OF 8" GRAVITY SEWER LINE 1 SEE SHEET UC-8 FOR PROFILE

PROP. 4' DIA MANHOLE "1 A" STA. 0+13.8 LINE 1  
29' LT OF -Y- STA. 19+00

PROP. 4' DIA MANHOLE "2 A" STA. 0+23.3 LINE 2  
33' LT OF -Y- STA. 19+35

PROP. 1-RELOCATE EXISTING FIRE HYDRANT

PROP. 4' DIA MANHOLE "2 B" STA. 4+03.3 LINE 2  
28' LT OF -Y- STA. 23+15

WATER LINES OWNED BY HOKE COUNTY

PROP. 13.8' OF 8" SANITARY GRAVITY SEWER LINE 1 SEE SHEET UC-8 FOR PROFILE

EXISTING MANHOLE "EQ1" STA. 0+00 LINE 1  
25' LT OF -Y- STA. 19+14

PROP. 23.3' OF 10" SANITARY GRAVITY SEWER LINE 2 SEE SHEET UC-8 FOR PROFILE

PROP. 380' OF 10" SANITARY GRAVITY SEWER LINE 2 SEE SHEET UC-8 FOR PROFILE

PROP. 2-CONNECT 4" SANITARY SEWER CLEAN OUT

PROP. RELOCATE EXISTING 3/4" WATER METER USING 3/4" PE WATER TUBING PIPE.

PROP. FILL OR REMOVE 906' OF EXISTING 8" TC GRAVITY SEWER LINE

PROP. 1-RELOCATE EXISTING FIRE HYDRANT

PROP. 445' OF 6" WATER LINE

PROP. 381' OF 10" SANITARY GRAVITY SEWER LINE 2 SEE SHEET UC-8 FOR PROFILE

PROP. RELOCATE EXISTING 3/4" WATER METER USING 3/4" PE WATER TUBING PIPE.

CONTRACTOR SHALL RELOCATE THE EXISTING WATER LINE TO GO UNDER THE PROPOSED DRAINAGE. LENGTH AND ELEVATION TO BE DETERMINED IN THE FIELD.

PROP. 4' DIA MANHOLE "2 C" STA. 7+84.3 LINE 2  
27' LT OF -Y- STA. 26+96

ABANDON AND PLUG EXISTING 2" WATER LINE

ABANDON AND PLUG EXISTING 6" WATER LINE

MATCHLINE STA. 24+00.00 -L- SEE SHEET UC-2

MATCHLINE STA. 37+00.00 -L-

10-SEP-2007 10:01 AM \\s3111\proj\2007\U-3816-r.dwg-pst5\_UC.dgn





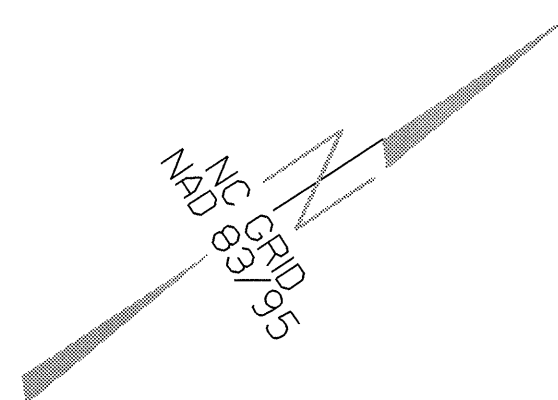




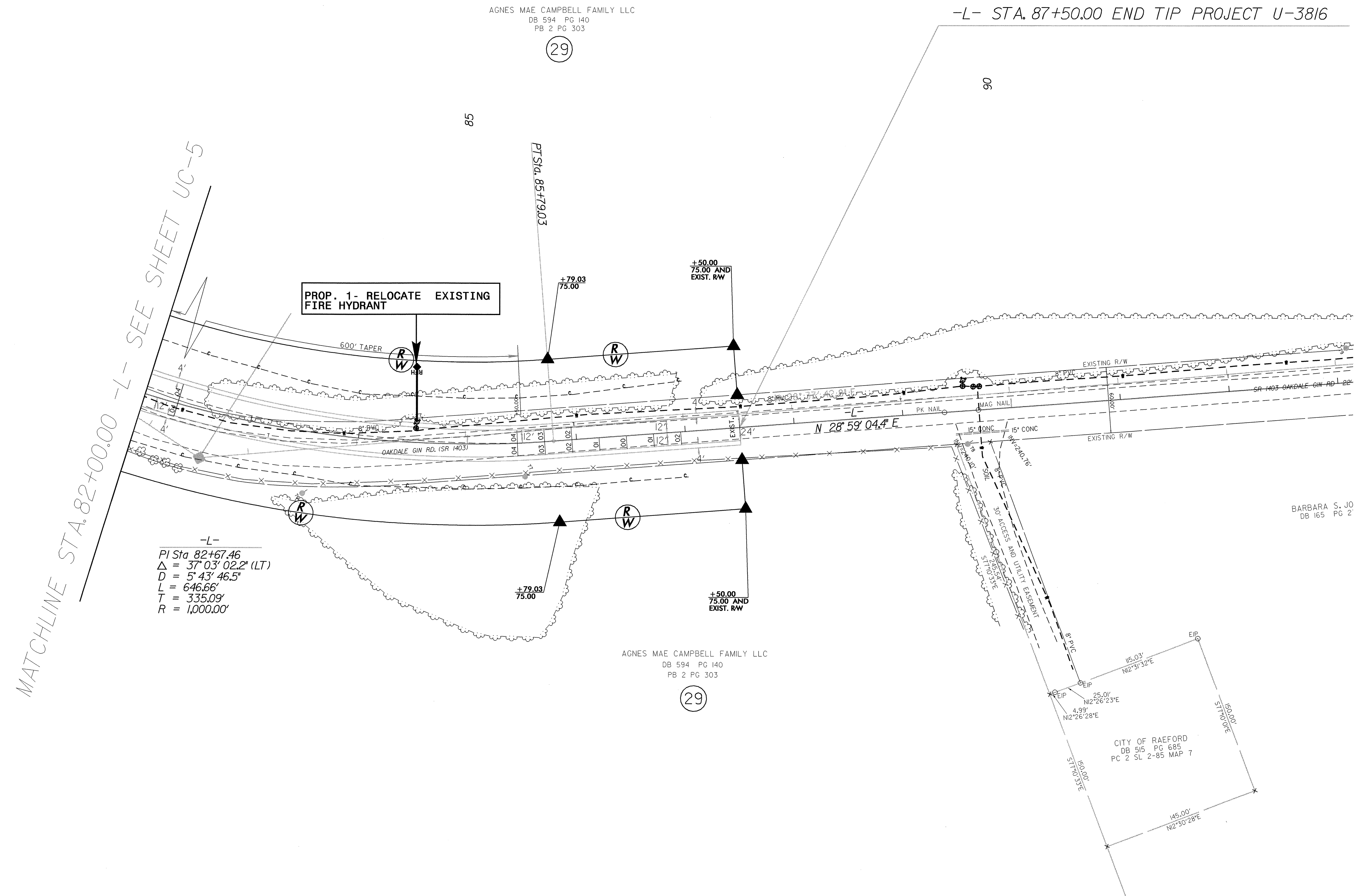




PROJECT REFERENCE NO.	SHEET NO.
<b>U-3816</b>	<b>UC-7</b>
DESIGNED BY: <b>ARK</b>	
DRAWN BY: <b>ARK</b>	
CHECKED BY: <b>CAB</b>	
APPROVED BY: <b>CAB</b>	
REVISED:	
NORTH CAROLINA DEPARTMENT OF TRANSPORTATION PROJECT SERVICES UNIT PHONE: (919) 250-4128 FAX: (919) 250-4119	
UTILITY CONSTRUCTION PLANS ONLY	



**UTILITY CONSTRUCTION**



**PROP. 1- RELOCATE EXISTING FIRE HYDRANT**

-L-  
 PI Sta 82+67.46  
 $\Delta = 37^{\circ} 03' 02.2''$  (LT)  
 D = 5' 43' 46.5"  
 L = 646.66'  
 T = 335.09'  
 R = 1,000.00'

AGNES MAE CAMPBELL FAMILY LLC  
 DB 594 PG 140  
 PB 2 PG 303

CITY OF RAEFORD  
 DB 515 PG 685  
 PC 2 SL 2-85 MAP 7

BARBARA S. JO  
 DB 165 PG 2'

8/17/09

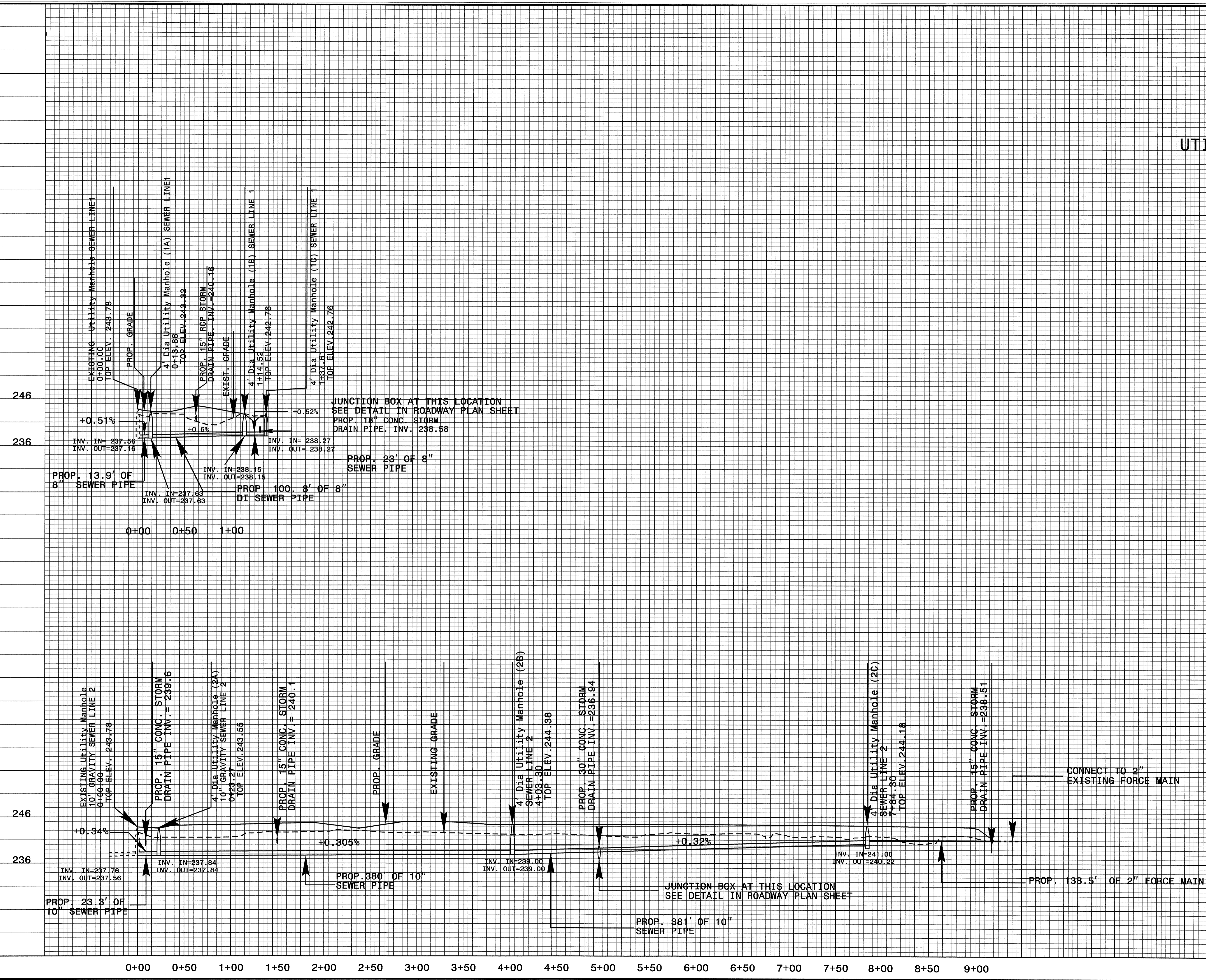
r:\u0000\000007106144\066555P22007106144\066555P22007106144.dgn



5/14/99

PROJECT REFERENCE NO.	SHEET NO.
<b>U-3816</b>	<b>UC-8</b>
DESIGNED BY: <b>ARK</b>	
DRAWN BY: <b>ARK</b>	
CHECKED BY: <b>CAB</b>	
APPROVED BY: <b>CAB</b>	
REVISED:	
NORTH CAROLINA DEPARTMENT OF TRANSPORTATION	
PROJECT SERVICES UNIT PHONE: (919) 250-4128 FAX: (919) 250-4119	
UTILITY CONSTRUCTION PLANS ONLY	

# UTILITY CONSTRUCTION



10-SEP-2007 07:35  
 s:\3816\UC-8\plan\UC-8.dwg  
 s:\3816\UC-8\plan\UC-8.dwg





TIP PROJECT: U-3816

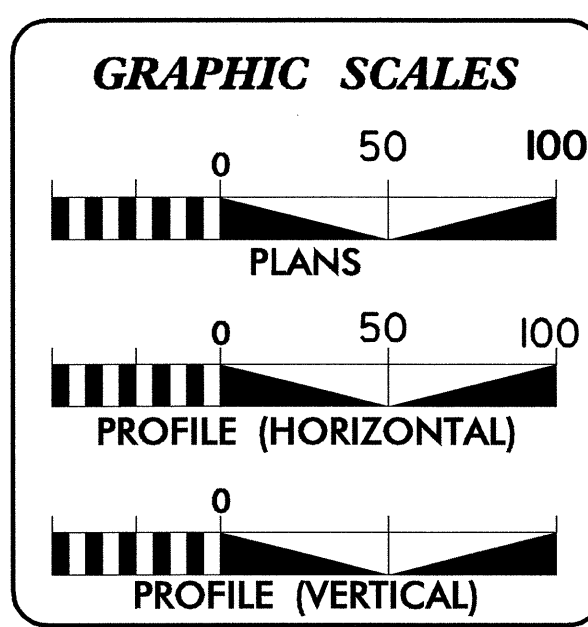
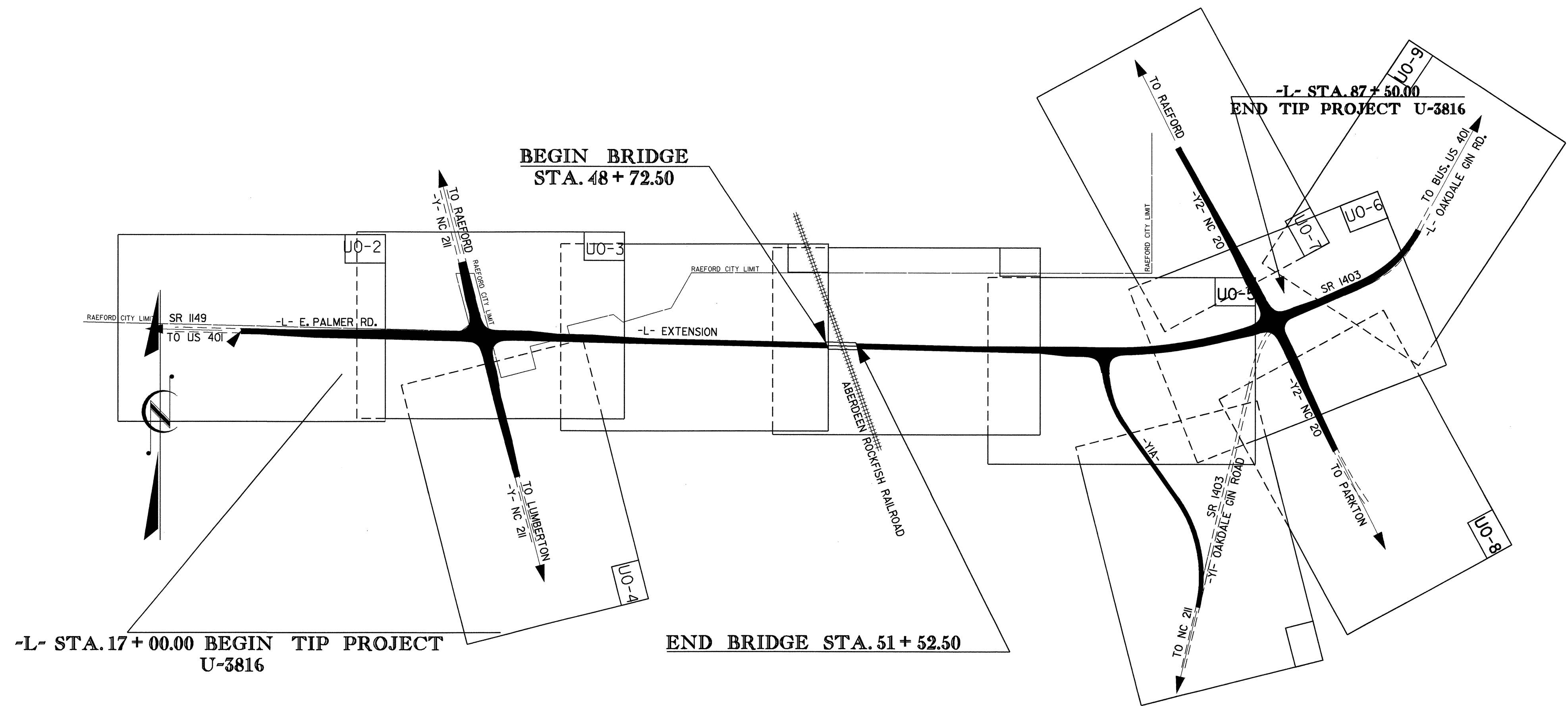
T.I.P. NO.	SHEET NO.
U-3816	UO-1

STATE OF NORTH CAROLINA  
DIVISION OF HIGHWAYS

**UTILITY BY OTHERS PLANS  
HOKE COUNTY**

**LOCATION: PALMER STREET EXTENSION FROM NC 211  
AT SR 1149 TO NC 20 AT SR 1403**  
**TYPE OF WORK: UTILITIES BY OTHERS RELOCATION**

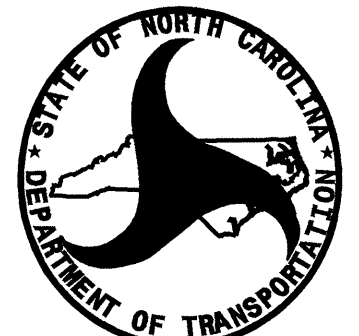
W 1114 B CELL



**INDEX OF SHEETS**

SHEET NO.	DESCRIPTION
UO-1	TITLE SHEET
UO-2 THRU UO-9	UTILITY BY OTHERS PLAN SHEETS

- UTILITY OWNERS ON PROJECT**
- (1) PROGRESS ENERGY
  - (2) EMBARQ
  - (3) PIEDMONT NATURAL GAS
  - (4) TIME WARNER CABLE



PREPARED IN THE OFFICE OF:  
**DIVISION OF HIGHWAYS  
DESIGN SERVICES  
UTILITY SECTION**

1591 MAIL SERVICES CENTER  
RALEIGH NC 27699-1591  
PHONE (919) 250-4128  
FAX (919) 250-4119

**Roger Worthington, P.E.** UTILITIES SECTION ENGINEER  
**Carl Barclay, P.E.** UTILITIES SQUAD LEADER PROJECT ENGINEER  
**Ali Kouchehi, P.E.** UTILITIES PROJECT DESIGNER

06-SEP-2007 16:03  
r:\utilities\vd\ut\proj\U3816\_rdy\_tsh\_uc.l.dgn  
\$\$\$\$\$USERNAME\$\$\$\$\$

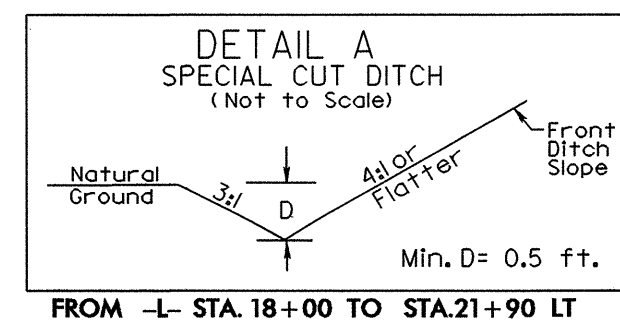
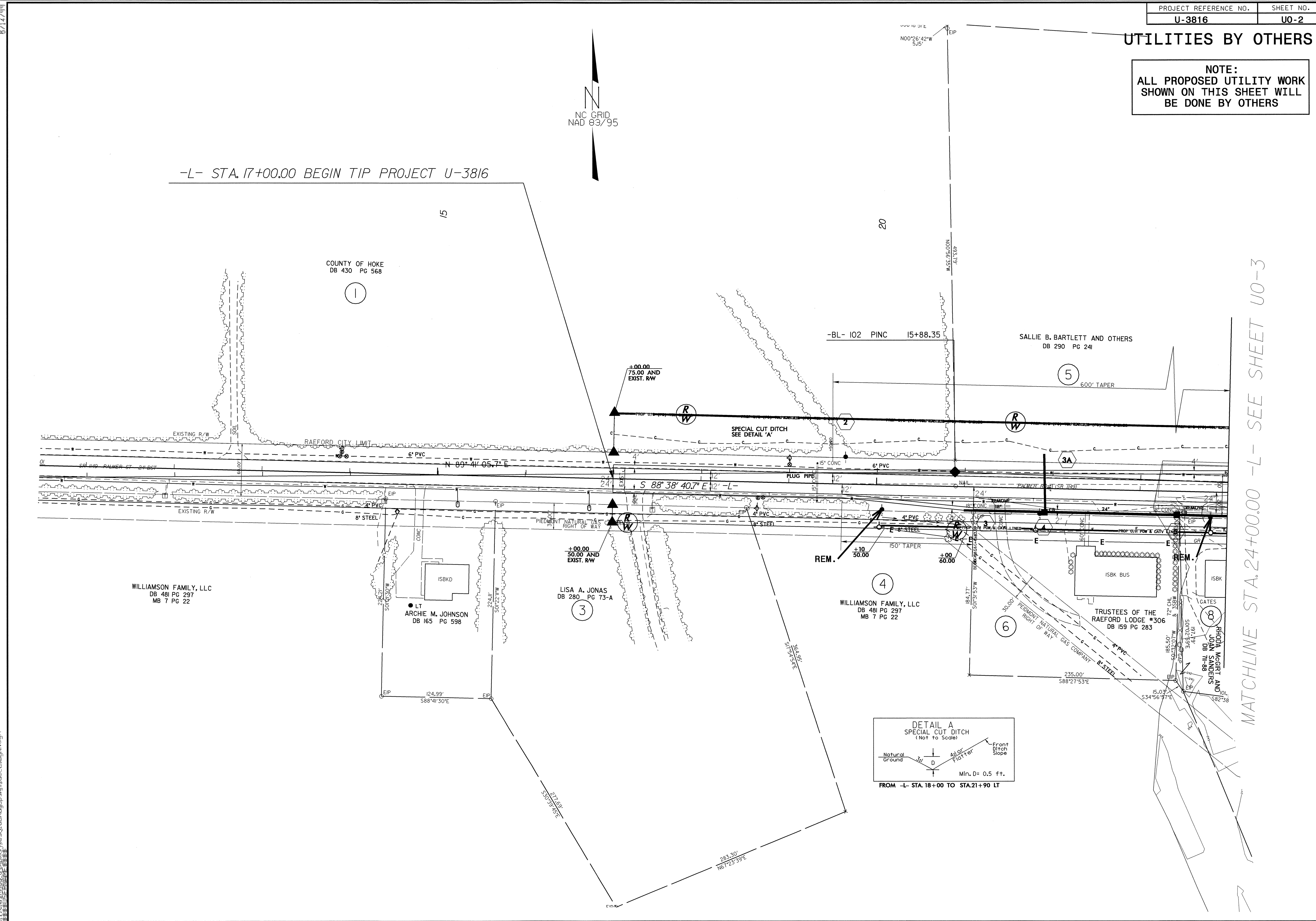


**UTILITIES BY OTHERS**

**NOTE:**  
ALL PROPOSED UTILITY WORK  
SHOWN ON THIS SHEET WILL  
BE DONE BY OTHERS



-L- STA. 17+00.00 BEGIN TIP PROJECT U-3816

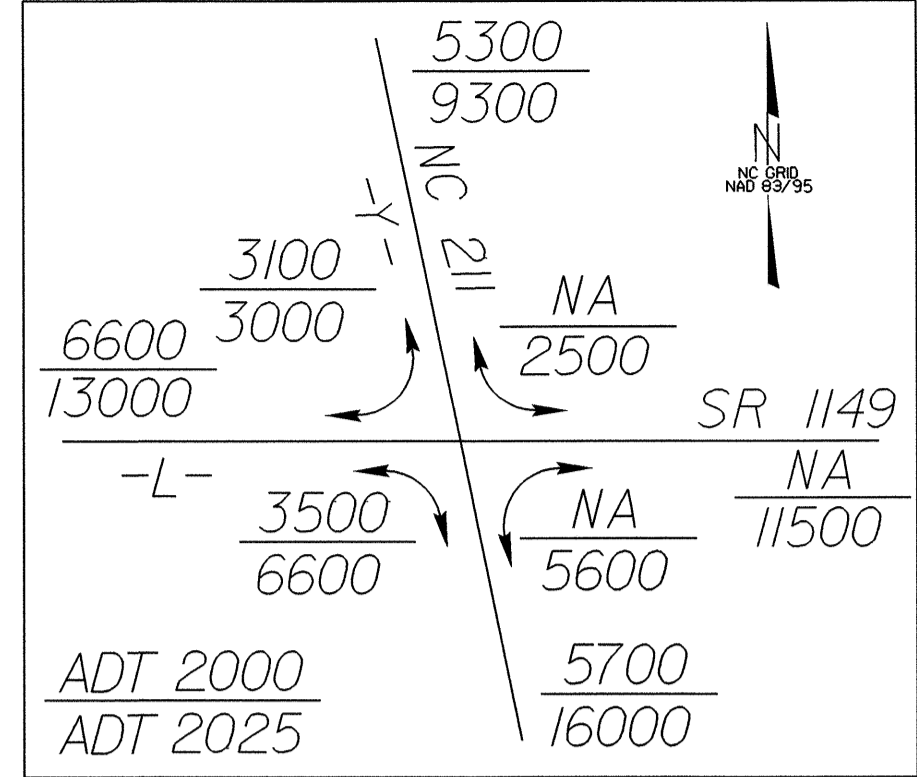


MATCHLINE STA. 24+00.00 -L- SEE SHEET U0-3

06/17/99  
06/6/2000 14:41:14  
r:\n\c\projects\2000\144114\144114.dwg  
r:\n\c\projects\2000\144114\144114.dwg  
r:\n\c\projects\2000\144114\144114.dwg  
r:\n\c\projects\2000\144114\144114.dwg

UTILITIES BY OTHERS

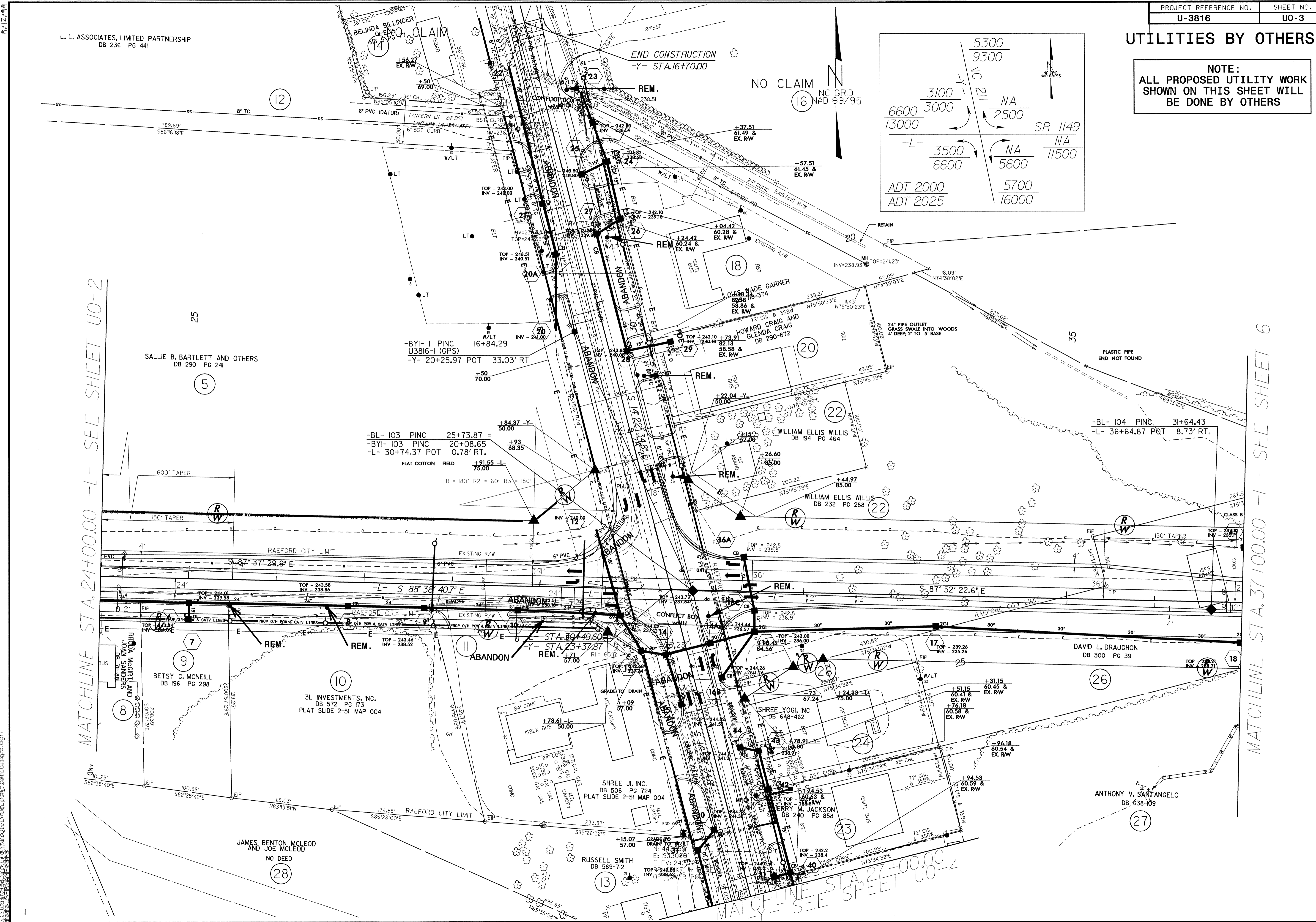
NOTE:  
ALL PROPOSED UTILITY WORK  
SHOWN ON THIS SHEET WILL  
BE DONE BY OTHERS



L. L. ASSOCIATES, LIMITED PARTNERSHIP  
DB 236 PG 441

MATCHLINE STA. 24+00.00 -L- SEE SHEET U0-2

MATCHLINE STA. 37+00.00 -L- SEE SHEET 6



0:\6\SSFP2000\1414812...  
11/11/2000 10:00:00 AM  
11/11/2000 10:00:00 AM

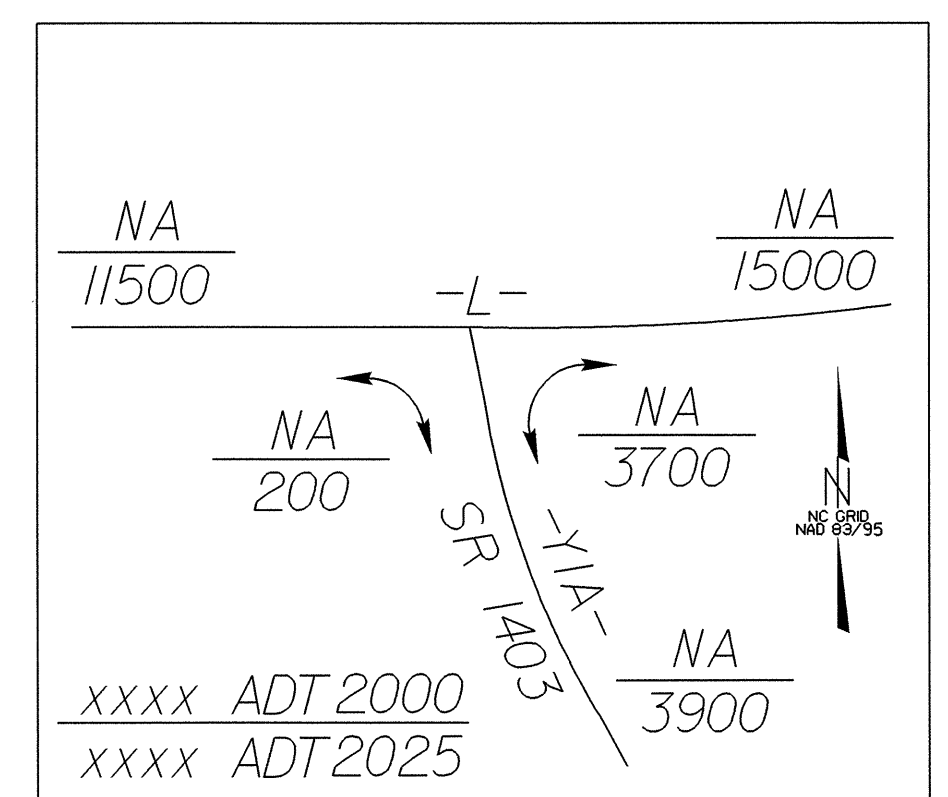
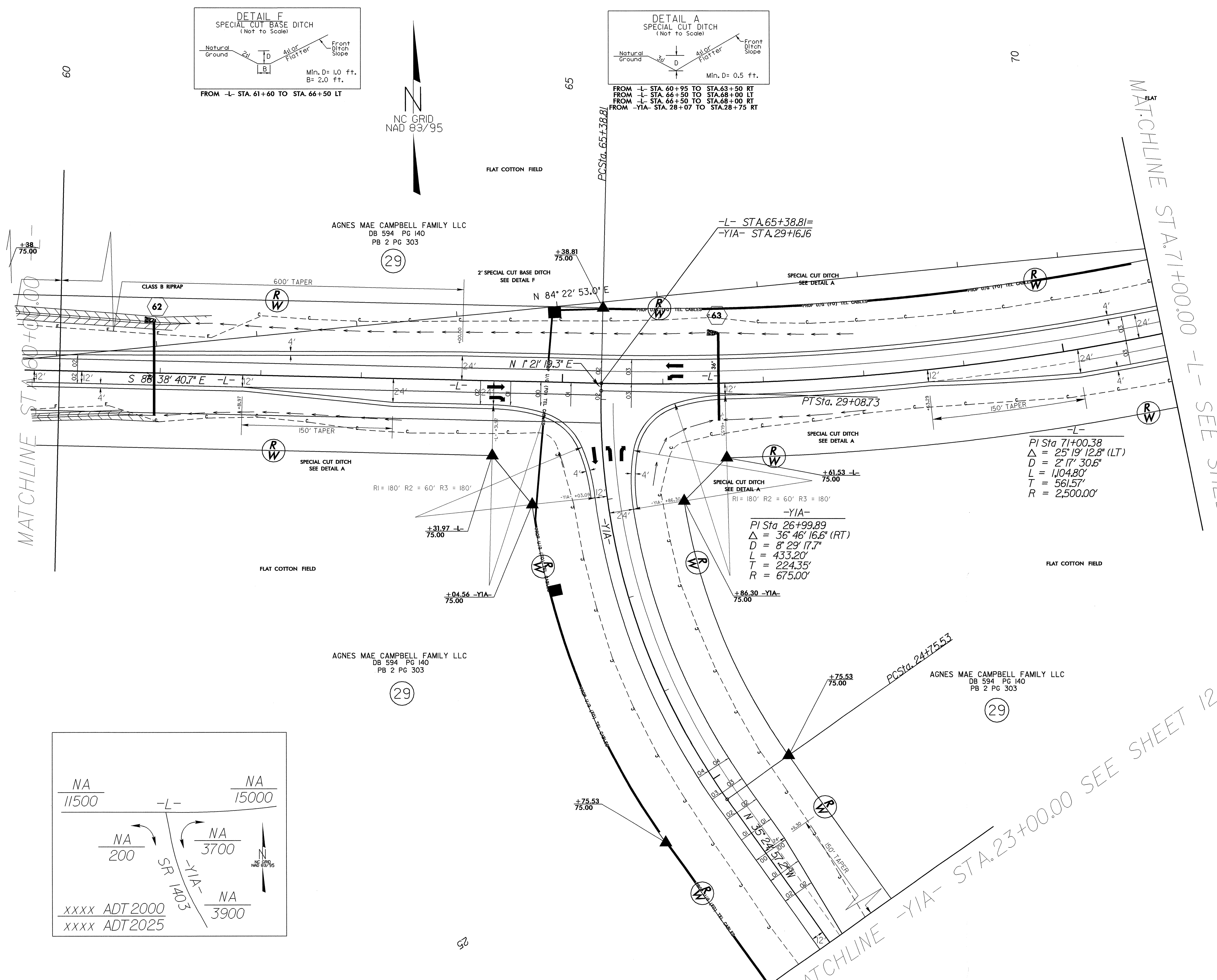
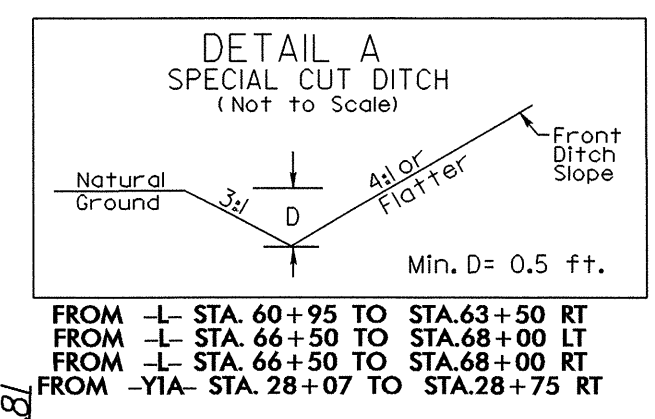
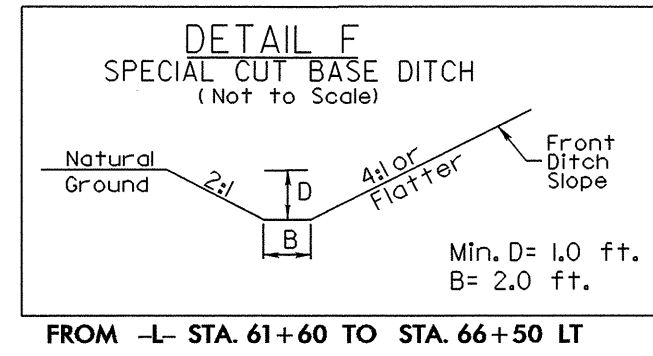
MATCHLINE STA. 27+00.00  
-Y- SEE SHEET U0-4





### UTILITIES BY OTHERS

**NOTE:**  
ALL PROPOSED UTILITY WORK SHOWN ON THIS SHEET WILL BE DONE BY OTHERS



5/14/09  
 10-SEP-2007 11:38  
 r:\projects\3816\rdy\psh8\_uo\_5.dgn  
 \$\$\$USERNAME\$\$\$



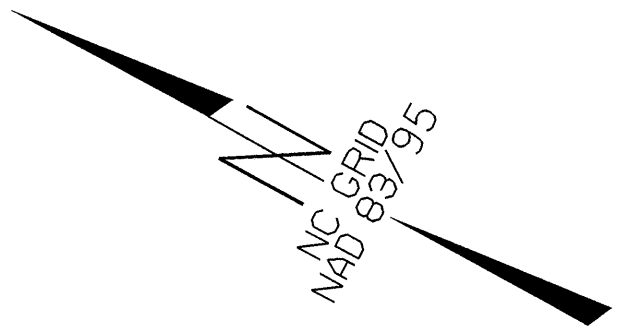




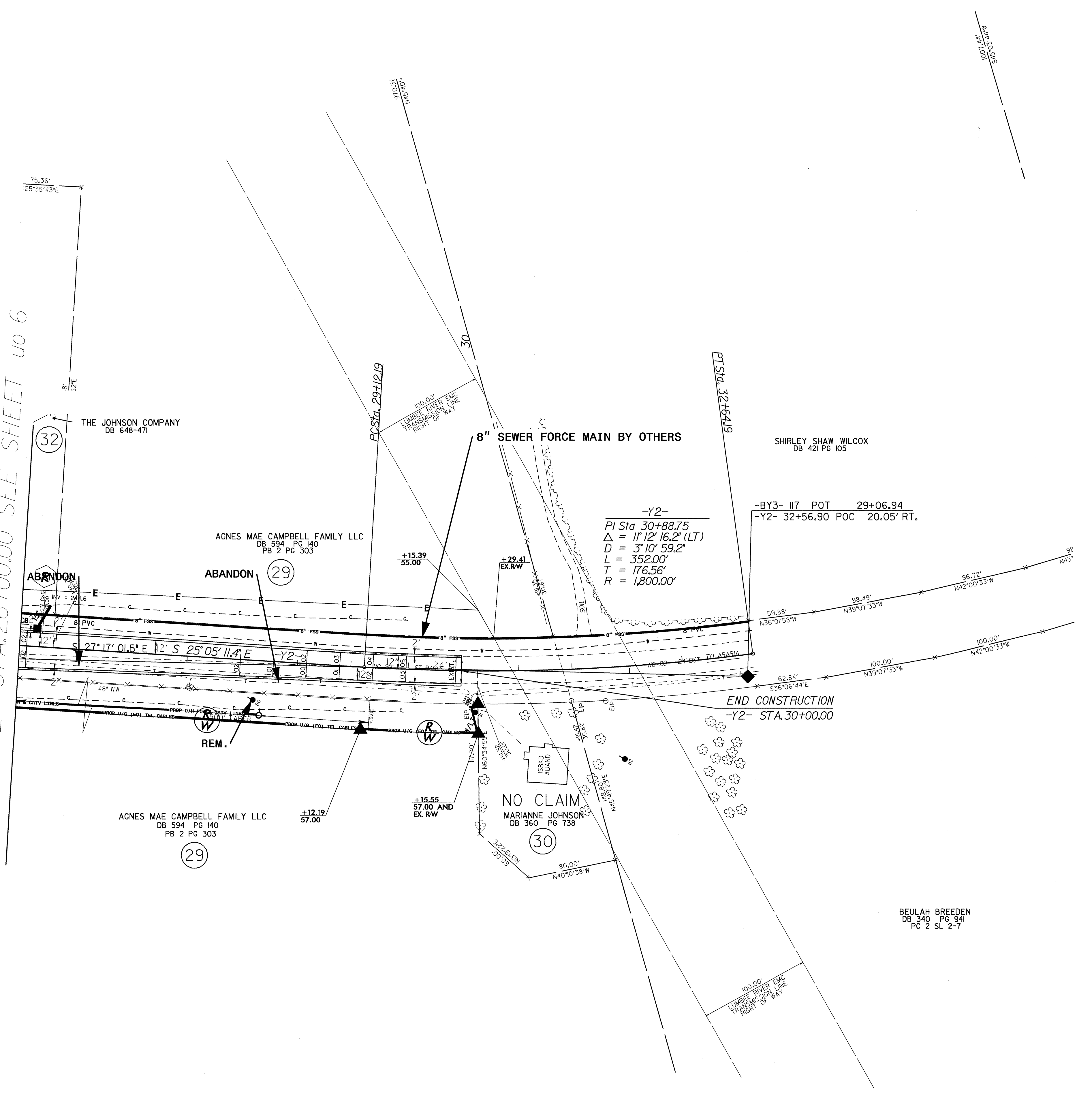


### UTILITIES BY OTHERS

**NOTE:**  
ALL PROPOSED UTILITY WORK  
SHOWN ON THIS SHEET WILL  
BE DONE BY OTHERS



MATCHLINE -Y2- STA. 26+00.00 SEE SHEET U0 6



**8" SEWER FORCE MAIN BY OTHERS**

-Y2-  
PI Sta 30+88.75  
 $\Delta = 1' 12' 16.2''$  (LT)  
 $D = 3' 10' 59.2''$   
 $L = 352.00'$   
 $T = 176.56'$   
 $R = 1,800.00'$

-BY3- 117 POT 29+06.94  
-Y2- 32+56.90 POC 20.05' RT.

END CONSTRUCTION  
-Y2- STA. 30+00.00

THE JOHNSON COMPANY  
DB 648-471

AGNES MAE CAMPBELL FAMILY LLC  
DB 594 PG 140  
PB 2 PG 303

SHIRLEY SHAW WILCOX  
DB 421 PG 105

AGNES MAE CAMPBELL FAMILY LLC  
DB 594 PG 140  
PB 2 PG 303

+15.55  
57.00 AND  
EX. RW

NO CLAIM  
MARIANNE JOHNSON  
DB 360 PG 738

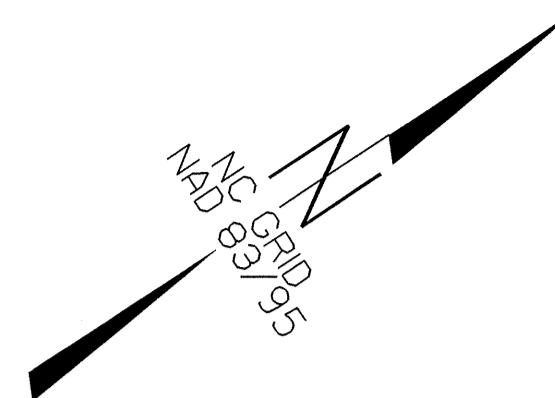
BEULAH BREEDEN  
DB 340 PG 941  
PC 2 SL 2-7

8/17/09

I:\9-SEP-2007 08:45  
:\Utilities\chd\ut\proj\3816\_rdy\_psh14\_uo\_8.dgn  
\$\$\$\$\$FERNANDEZ\$\$\$\$\$

# UTILITIES BY OTHERS

**NOTE:**  
ALL PROPOSED UTILITY WORK  
SHOWN ON THIS SHEET WILL  
BE DONE BY OTHERS



6/17/99

AGNES MAE CAMPBELL FAMILY LLC  
DB 594 PG 140  
PB 2 PG 303

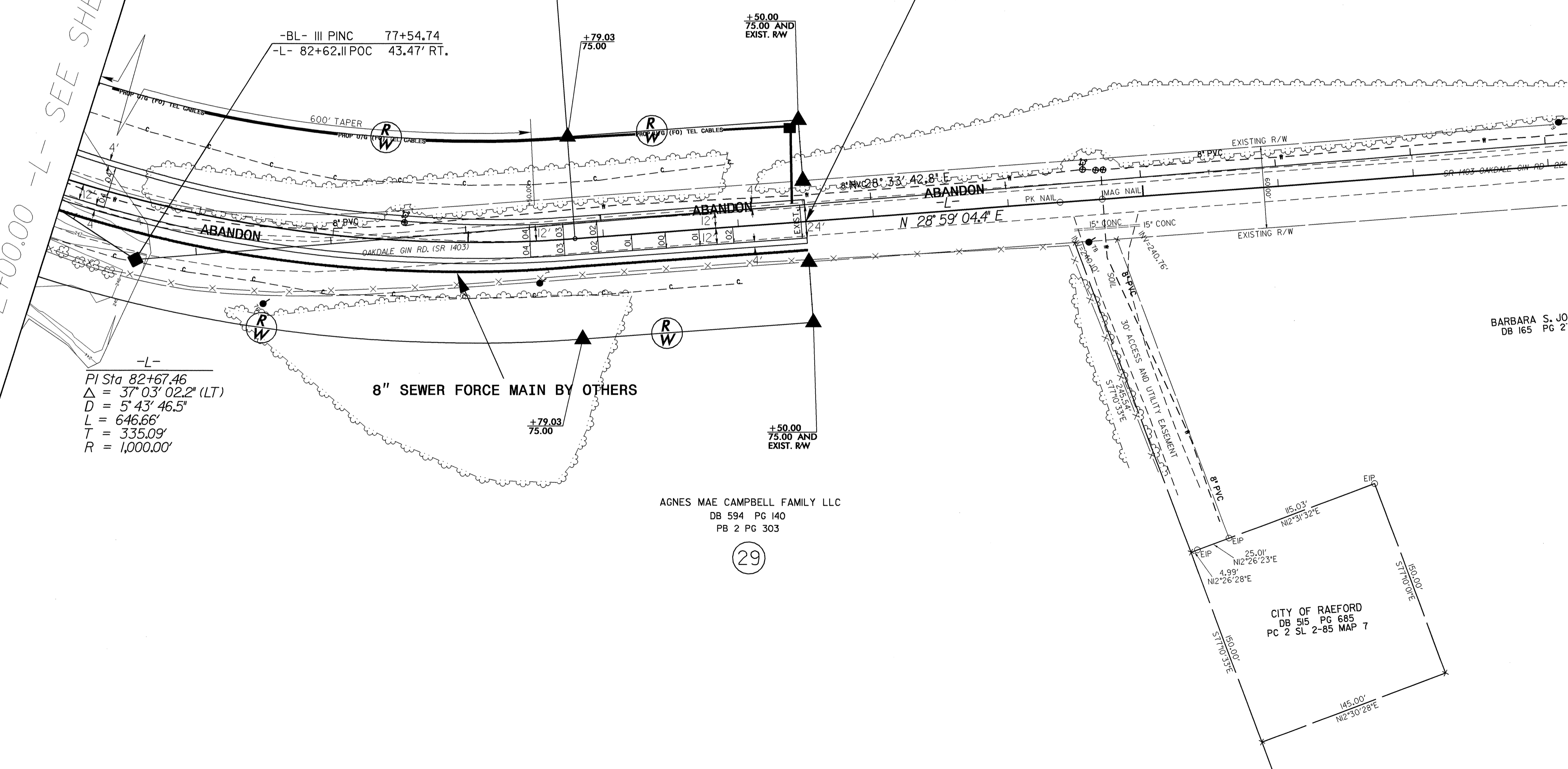
-L- STA. 87+50.00 END TIP PROJECT U-3816

MATCHLINE STA. 82+00.00 -L- SEE SHEET U0-6

-BL- III PINC 77+54.74  
-L- 82+62.11 POC 43.47' RT.

-L-  
PI Sta 82+67.46  
 $\Delta = 37^{\circ} 03' 02.2''$  (LT)  
D = 5' 43' 46.5"  
L = 646.66'  
T = 335.09'  
R = 1,000.00'

8" SEWER FORCE MAIN BY OTHERS



BARBARA S. JO  
DB 165 PG 2'

CITY OF RAEFORD  
DB 515 PG 685  
PC 2 SL 2-85 MAP 7

10-SEP-2007 08:48  
r:\u0000\3816-rdy-psh10\_uo-9.dgn