

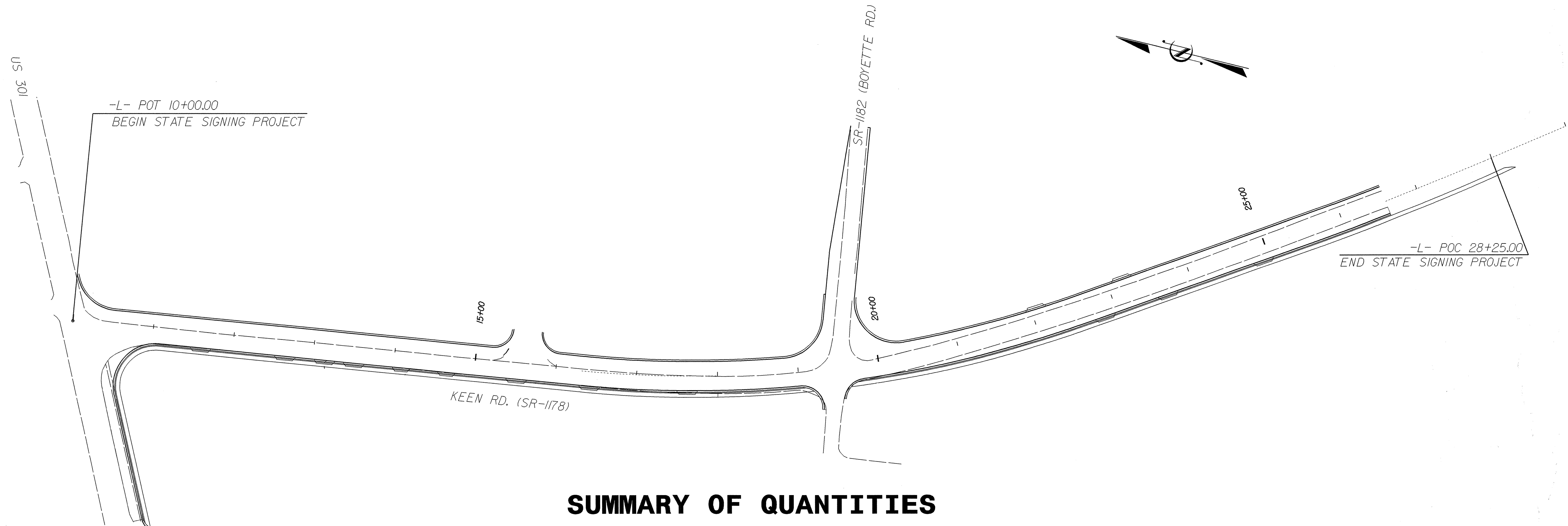
**STATE OF NORTH CAROLINA
DEPARTMENT OF TRANSPORTATION**

**SIGNING PLANS
JOHNSTON COUNTY**

**LOCATION: SR 1178 (KEEN ROAD) FROM US-301 TO 164' NORTH WEST
OF SR 1164 (ALLENDALE ROAD).**

T.I.P.: R-4071

CONTRACT: C201888



SUMMARY OF QUANTITIES

ITEM NO.	DESC. NO.	SECT. NO.	ITEM DESCRIPTION	QUANTITY	UNIT
4025000000	901		CONTRACTOR FURNISHED, TYPE E SIGN	42.5	S.F.
4025000000	901		CONTRACTOR FURNISHED, TYPE F SIGN	34.75	S.F.
4072000000	903		SUPPORTS, 3 LB STEEL U-CHANNEL	201	L.F.
4102000000	904		SIGN ERECTION, TYPE E	8	EA.
4108000000	904		SIGN ERECTION, TYPE F	2	EA.
4116100000	904		RELOCATE SIGN, TYPE E	1	EA.
4116100000	904		RELOCATE SIGN, TYPE F	1	EA.
4155000000	907		DISPOSAL OF SIGN SYSTEM, U-CHANNEL	10	EA.
4158000000	907		DISPOSAL OF SIGN SYSTEM, WOOD	2	EA.
4192000000	907		DISPOSAL OF SUPPORT, U-CHANNEL	2	EA.

INDEX

SHEET NO.	DESCRIPTION
1	TITLE SHEET
2	E & F SHEET
3 & 4	EXISTING/PROPOSED ROADWAY

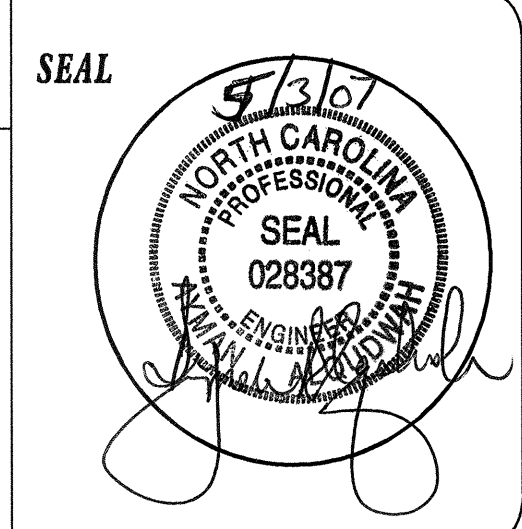
PLAN PREPARED BY: N.C.D.O.T. SIGNING SECTION

RON KING, P.E. SIGNING ENGINEER

A.I.ALQUDWAH, P.E. SIGNING PROJECT ENGINEER

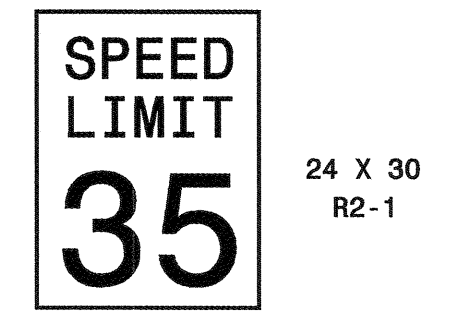
D.M.EATON SIGNING PROJECT DESIGN ENGINEER

_____ SIGNING DESIGNER



ROADWAY STANDARD DRAWINGS
APPLICABLE TO THESE SIGNING PLANS
901.50 904.10 904.50

404 QUANTITY REQ'D 6



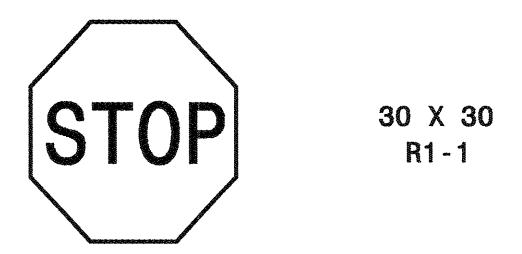
ONE "U" POST PER SIGN

501

NORTH	TO	2 - 24 X 12
301	INTERSTATE 95	1 - 30 X 24 1 - 24 X 24
↑	→	2 - 21 X 15

MOUNTED ON TWO "U" POSTS

408 QUANTITY REQ'D 2



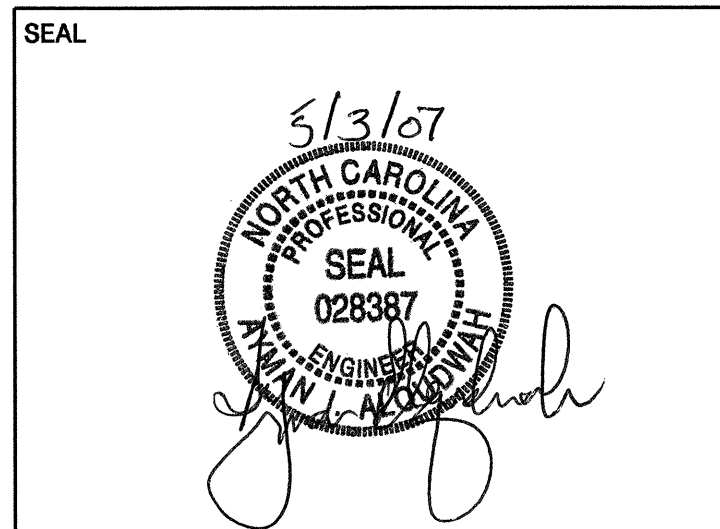
ONE "U" POST PER SIGN

502

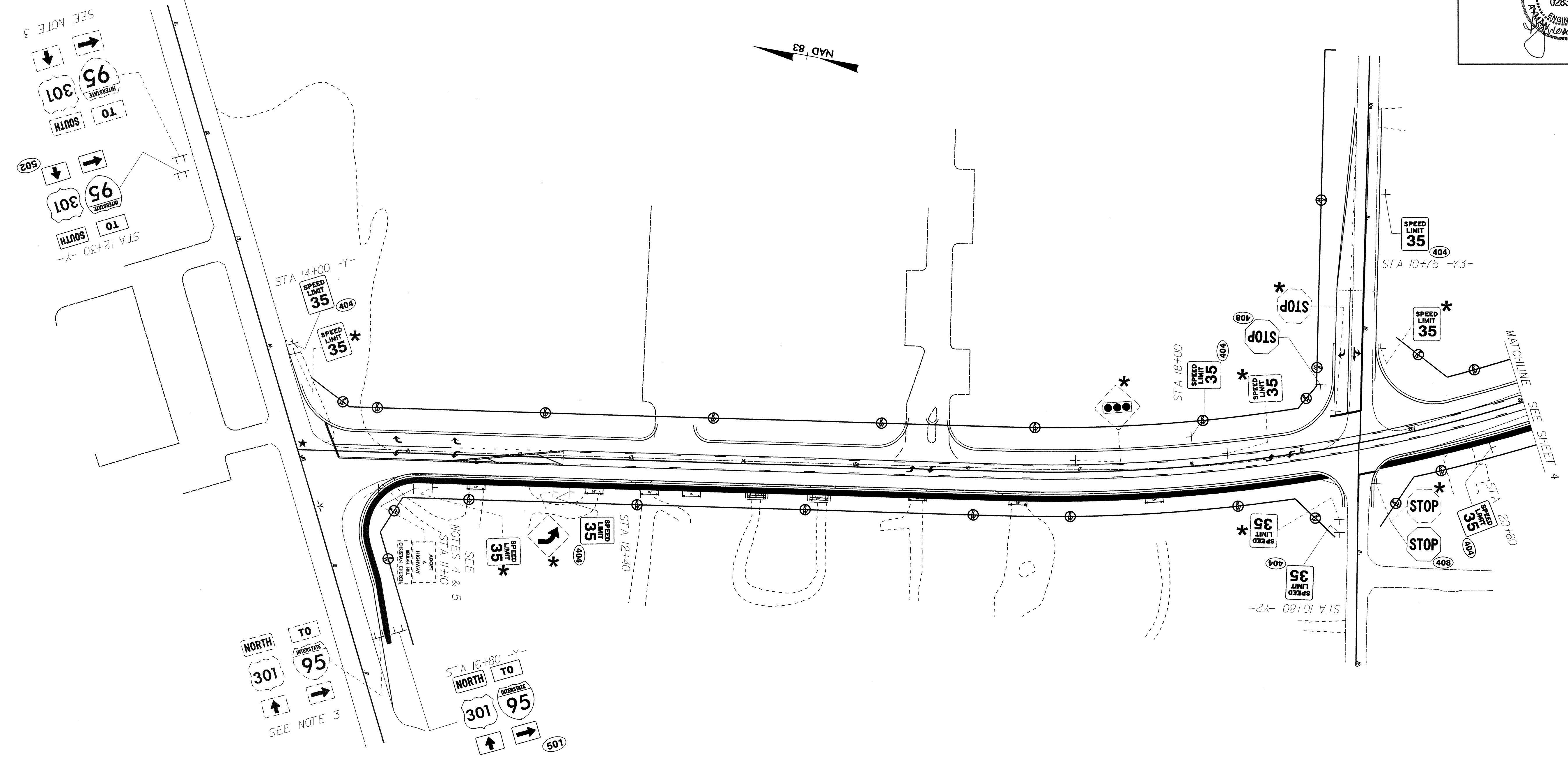
TO	SOUTH	2 - 24 X 12
INTERSTATE 95	301	1 - 24 X 24 1 - 30 X 24
←	↑	2 - 21 X 15

MOUNTED ON TWO "U" POSTS

NOTE: THIS DRAWING IS DIMENSIONED IN INCHES UNLESS OTHERWISE DEPICTED WITHIN THE DRAWING.



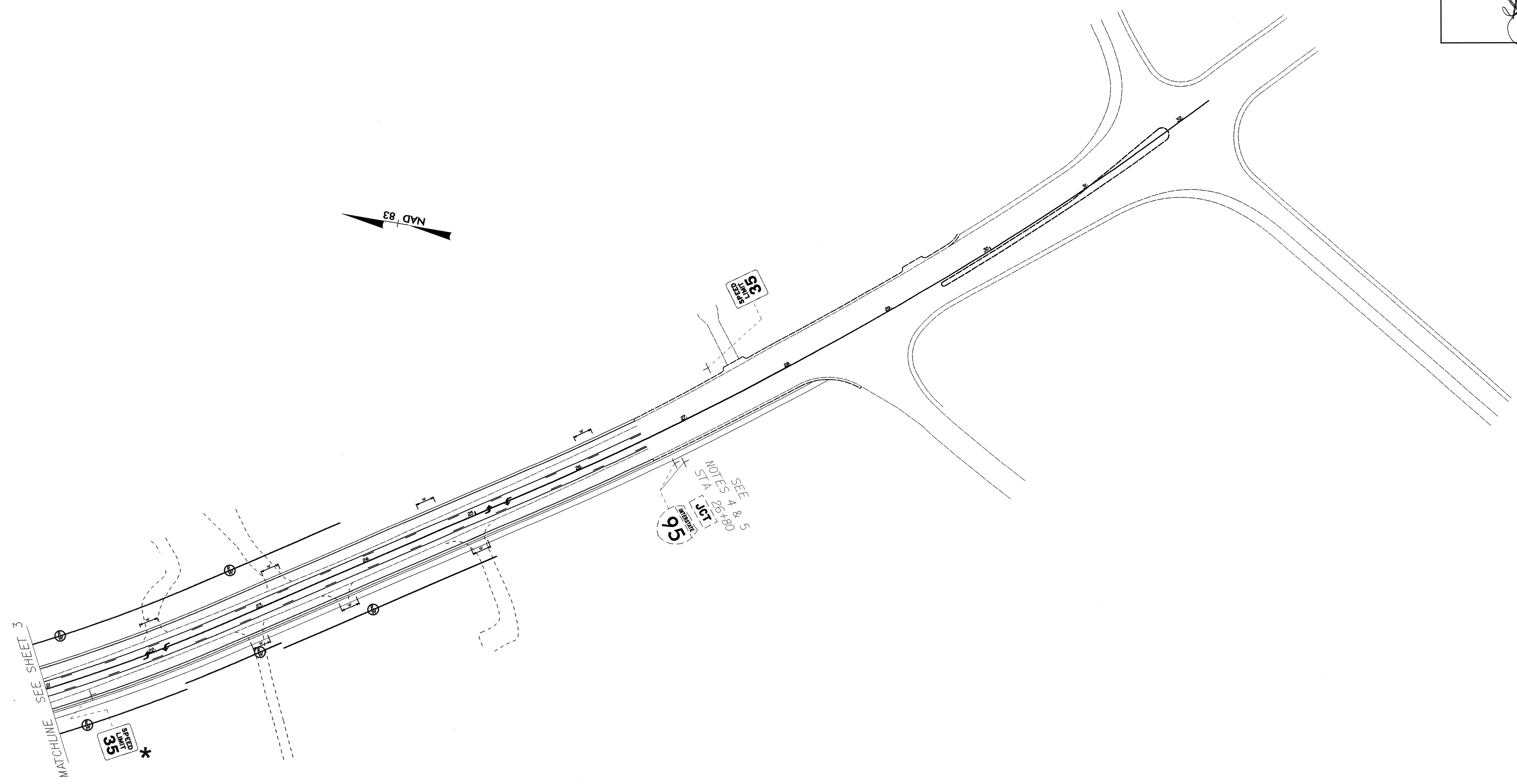
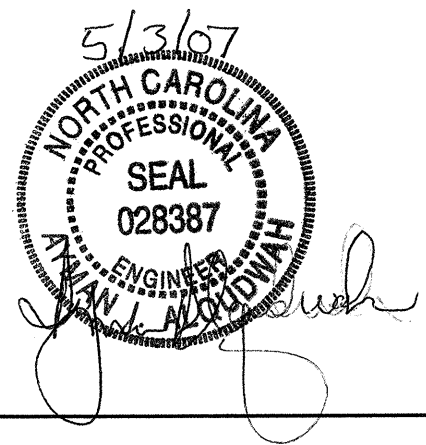
TYPE "E" & "F" SIGNS



* SEE NOTE 2

1. SIGNS FURNISHED BY CONTRACTOR.
2. DISPOSAL OF SIGN SYSTEM, U-CHANNEL.
3. DISPOSAL OF SIGN SYSTEM, WOOD.
4. DISPOSAL OF SUPPORT, U-CHANNEL.
5. RELOCATE SIGN, TYPE D, E, OR F.

EXISTING/PROPOSED ROADWAY
 SR 1178 (KEEN RD.)
 STA 10+00 TO 18+00



*** SEE NOTE 2**

1. SIGNS FURNISHED BY CONTRACTOR.
2. DISPOSAL OF SIGN SYSTEM, U-CHANNEL.
3. DISPOSAL OF SIGN SYSTEM, WOOD.
4. DISPOSAL OF SUPPORT, U-CHANNEL.
5. RELOCATE SIGN, TYPE D, E, OR F.

EXISTING/PROPOSED ROADWAY
 SR 1178 (KEEN RD.)
 STA 18+00 TO 28+22.4