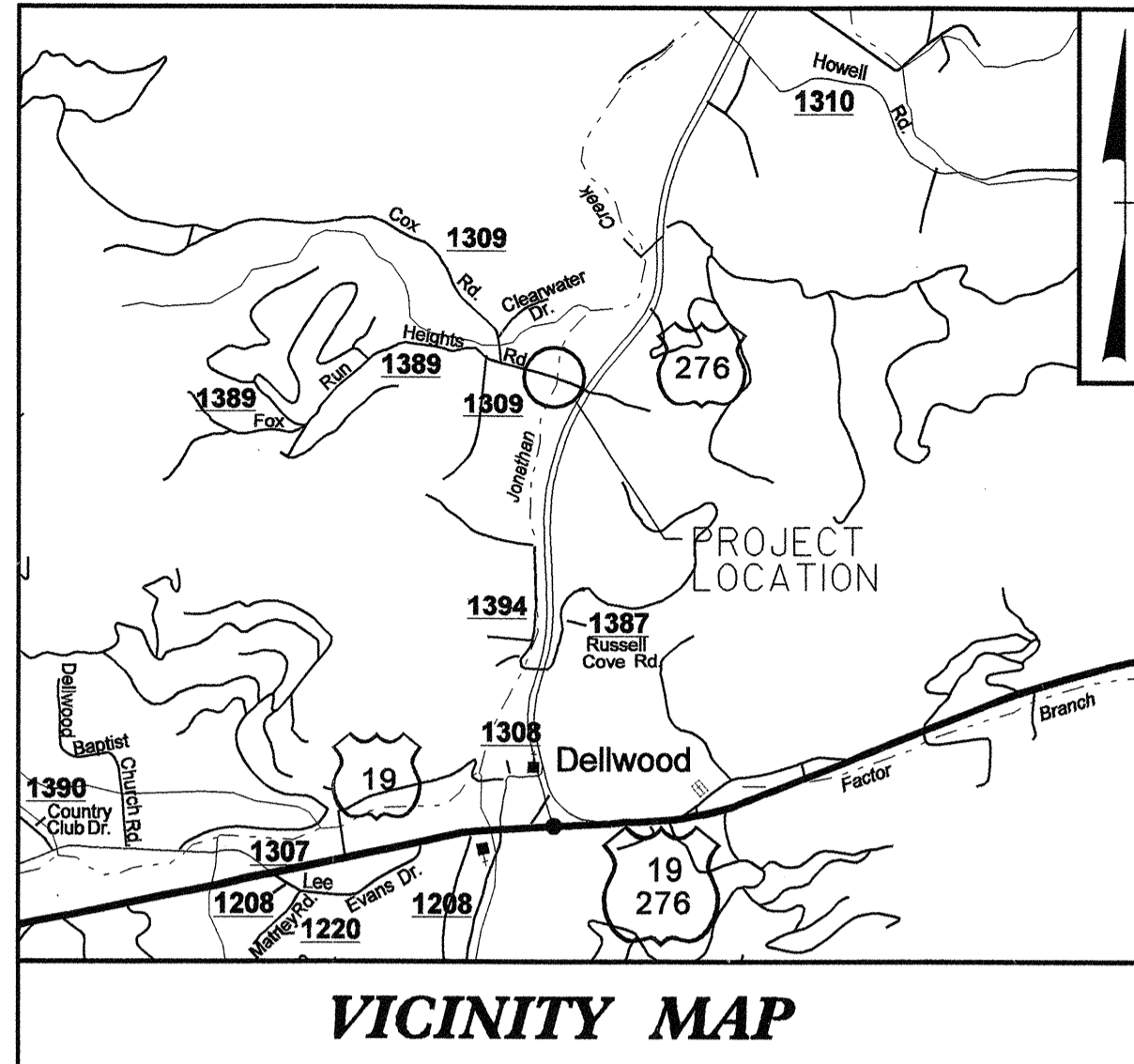


**CONTRACT: 33301.2.1**    **TIP PROJECT: B-3854**

See Sheet 1-A For Index of Sheets  
See Sheet 1-B For Conventional Symbols



STATE OF NORTH CAROLINA  
DIVISION OF HIGHWAYS

**UTILITY BY OTHERS PLANS  
HAYWOOD COUNTY**

**LOCATION: BRIDGE NO. 329 OVER JONATHAN CREEK  
ON SR 1309**

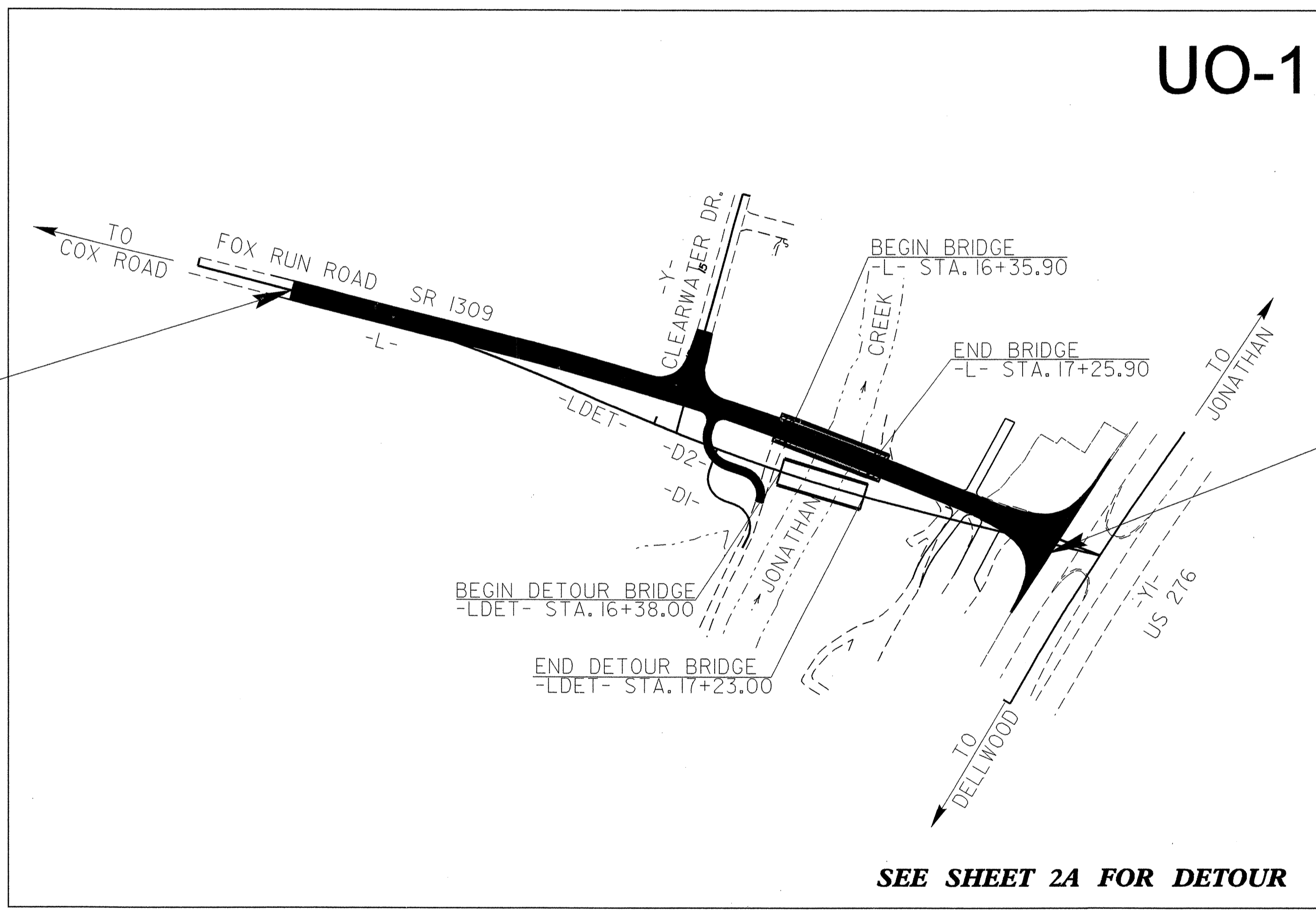
**TYPE OF WORK: UTILITY RELOCATION**

T.I.P. NO.	SHEET NO.
B-3854	UO-1

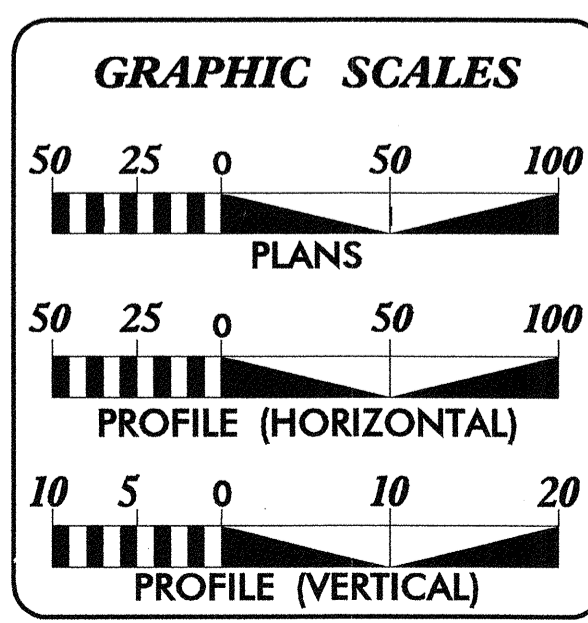


POT -L- STA. 10+75.00  
BEGIN TIP PROJECT B-3854

UO-1



POT -L- STA. 19+35.75  
END TIP PROJECT B-3854



INDEX OF SHEETS	
SHEET NO.	DESCRIPTION
UO-1	TITLE SHEET
UO-2	UTILITY BY OTHERS PLAN SHEETS

UTILITY OWNERS ON PROJECT
(1) HAYWOOD EMC
(2) AT&T OF NORTH CAROLINA
(3) CAROLINA MOUNTAIN CABLE

PREPARED IN THE OFFICE OF:  
**DIVISION OF HIGHWAYS  
DESIGN SERVICES  
UTILITY SECTION**

1591 MAIL SERVICES CENTER  
RALEIGH, NC 27699-1591  
PHONE (919) 259-4128  
FAX (919) 259-4119

**Roger Worthington, P.E.** UTILITIES SECTION ENGINEER

**Carl Barclay, P.E.** UTILITIES SQUAD LEADER PROJECT ENGINEER

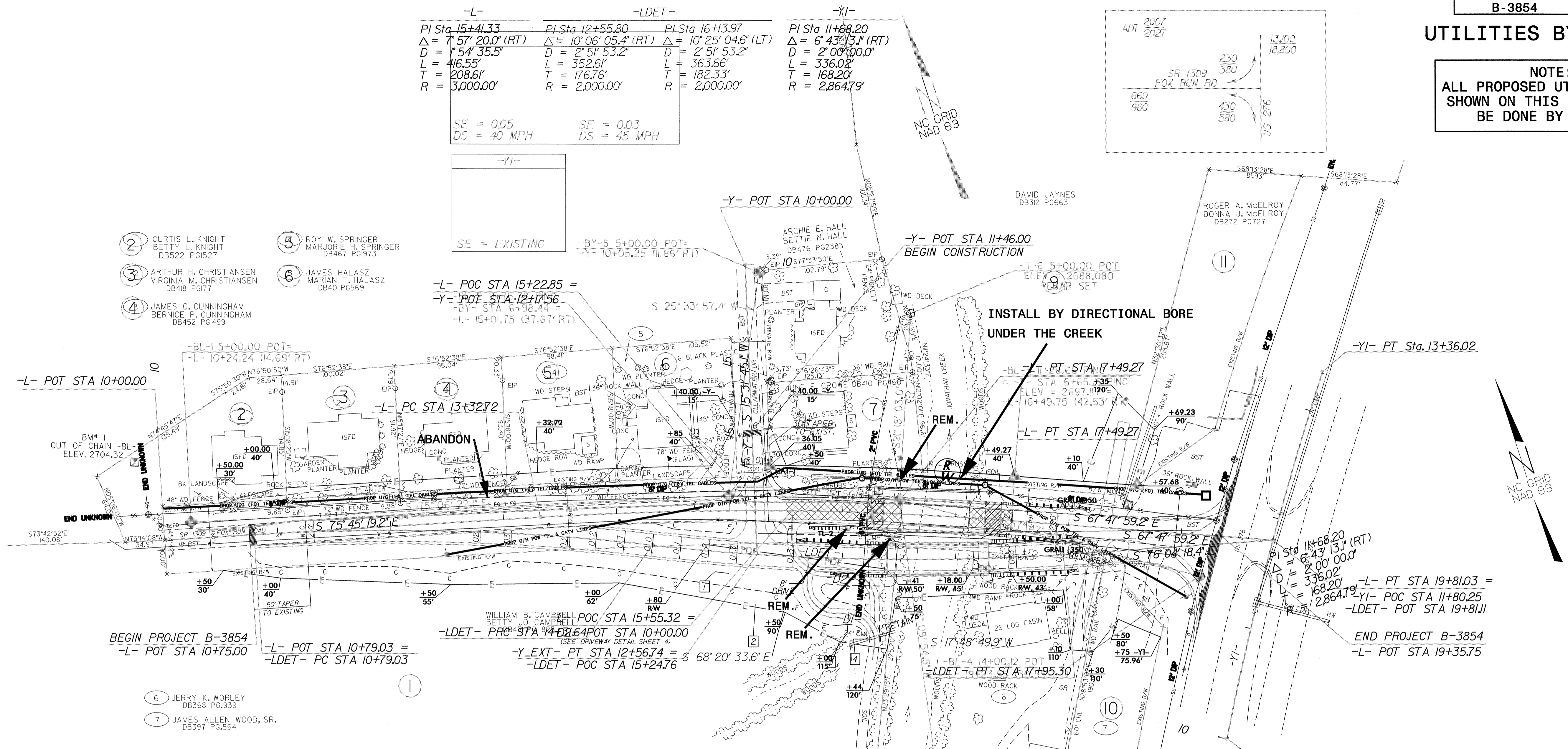
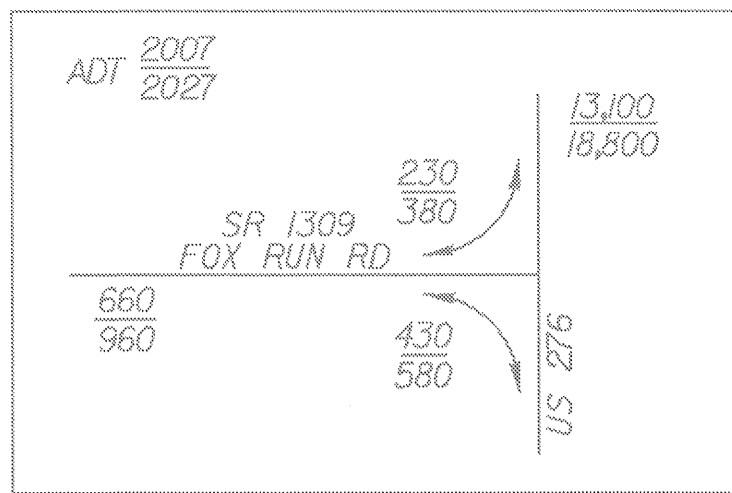
**Ali Kouchehi** UTILITIES PROJECT DESIGNER

03-JUL-2007 11:38  
 F:\utilities\rdy-ut\proj\B3854\_rdy-fsh\_U01.dgn  
 \$\$\$USERNAME\$\$\$

UTILITIES BY OTHERS

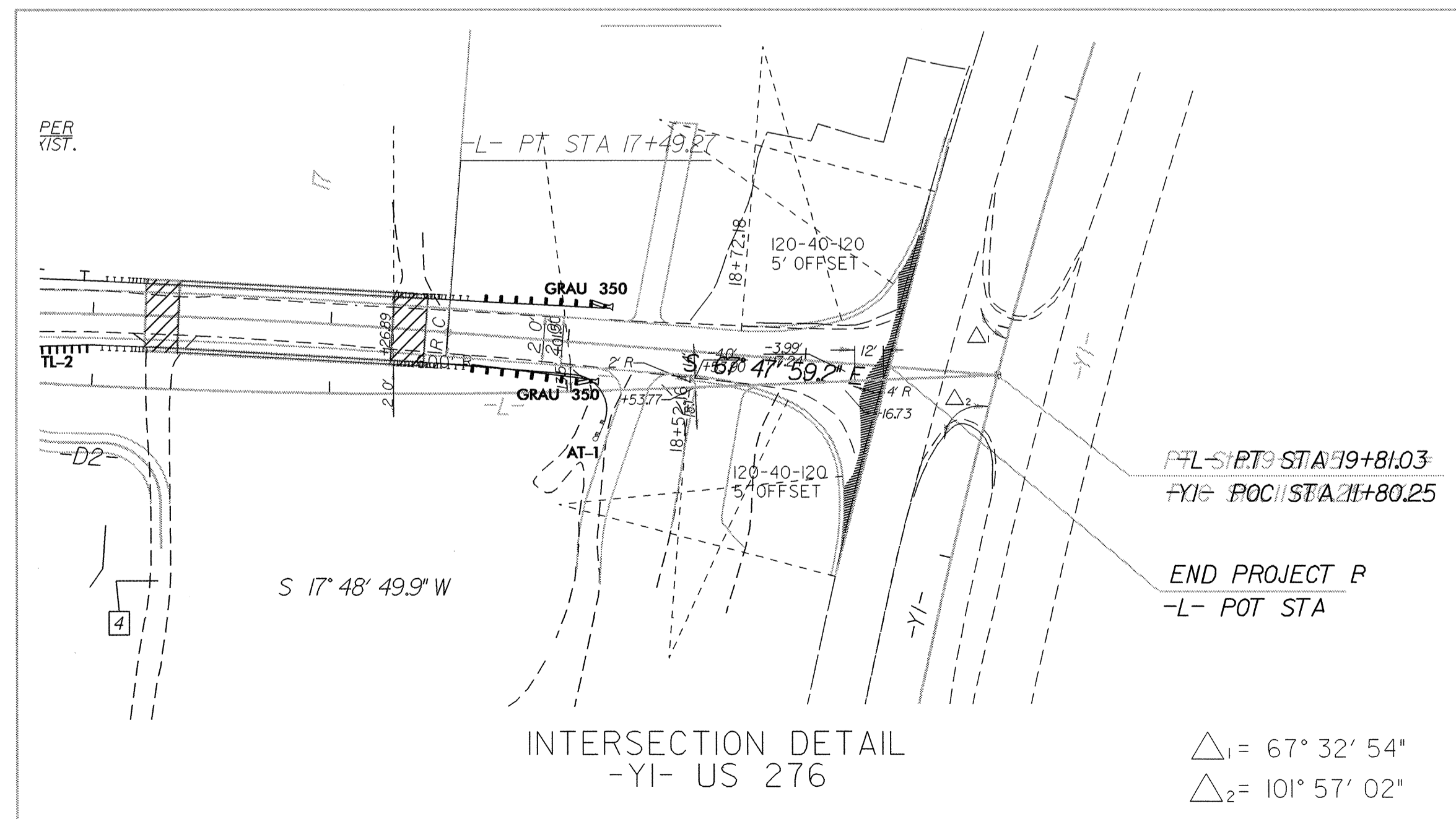
NOTE:  
ALL PROPOSED UTILITY WORK  
SHOWN ON THIS SHEET WILL  
BE DONE BY OTHERS

-L-	-LDET-	-YI-
PI Sta 15+41.33 Δ = 7° 57' 20.0" (RT) D = 154' 35.5" L = 416.55' T = 208.61' R = 3,000.00'	PI Sta 12+55.80 Δ = 10° 06' 05.4" (RT) D = 2° 51' 53.2" L = 352.61' T = 176.76' R = 2,000.00'	PI Sta 16+13.97 Δ = 10° 25' 04.6" (LT) D = 2° 51' 53.2" L = 363.66' T = 182.33' R = 2,000.00'
SE = 0.05 DS = 40 MPH	SE = 0.03 DS = 45 MPH	



- 2 CURTIS L. KNIGHT  
BETTY L. KNIGHT  
DB522 PG1527
- 3 ARTHUR H. CHRISTIANSEN  
VIRGINIA M. CHRISTIANSEN  
DB418 PG177
- 4 JAMES G. CUNNINGHAM  
BERNICE P. CUNNINGHAM  
DB452 PG1499
- 5 ROY W. SPRINGER  
MARJORIE H. SPRINGER  
DB467 PG1973
- 6 JAMES HALASZ  
MARIAN T. HALASZ  
DB401 PG569

- 6 JERRY K. WORLEY  
DB368 PG.939
- 7 JAMES ALLEN WOOD, SR.  
DB397 PG.564



Δ<sub>1</sub> = 67° 32' 54"  
Δ<sub>2</sub> = 101° 57' 02"

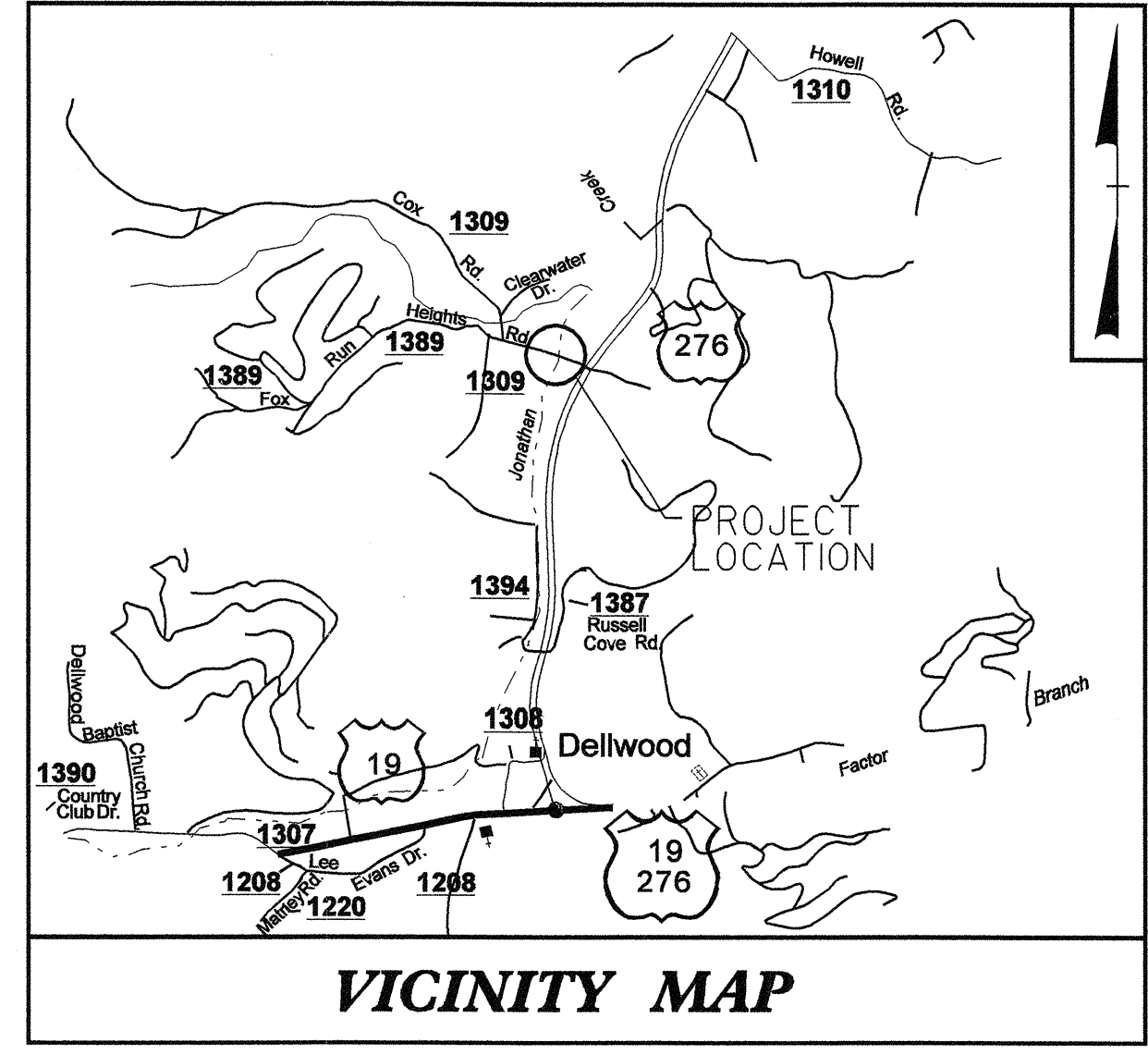
DATUM DESCRIPTION  
THE LOCALIZED COORDINATE SYSTEM DEVELOPED FOR THIS PROJECT IS BASED ON THE STATE PLANE COORDINATES ESTABLISHED BY NGS FOR MONUMENT "CREEK"  
WITH NAD 83 STATE PLANE GRID COORDINATES OF NORTHING: 675536.100(11) EASTING: 80295486.1(11)  
THE AVERAGE COMBINED GRID FACTOR USED ON THIS PROJECT (GROUND TO GRID) IS: 999757087  
THE N.C. LAMBERT GRID BEARING AND LOCALIZED HORIZONTAL GROUND DISTANCE FROM "CREEK" TO -L- STATION 11+00.00 IS S 55° 35' 02.96" W 2,034.147(11)  
ALL LINEAR DIMENSIONS ARE LOCALIZED HORIZONTAL DISTANCES  
VERTICAL DATUM USED IS MGD 29

NOTE: SEE SHEET 5 FOR -L- PROFILE  
SEE SHEET 5 FOR -Y- PROFILE

05-SEP-2007 15:37 \\b3854\_hyd\_psh04.dwg

T.I.P. NO.	SHEET NO.
B-3854	UC-1

See Sheet 1-A For Index of Sheets  
See Sheet 1-B For Conventional Symbols



# STATE OF NORTH CAROLINA DIVISION OF HIGHWAYS

## UTILITY CONSTRUCTION PLANS HAYWOOD COUNTY

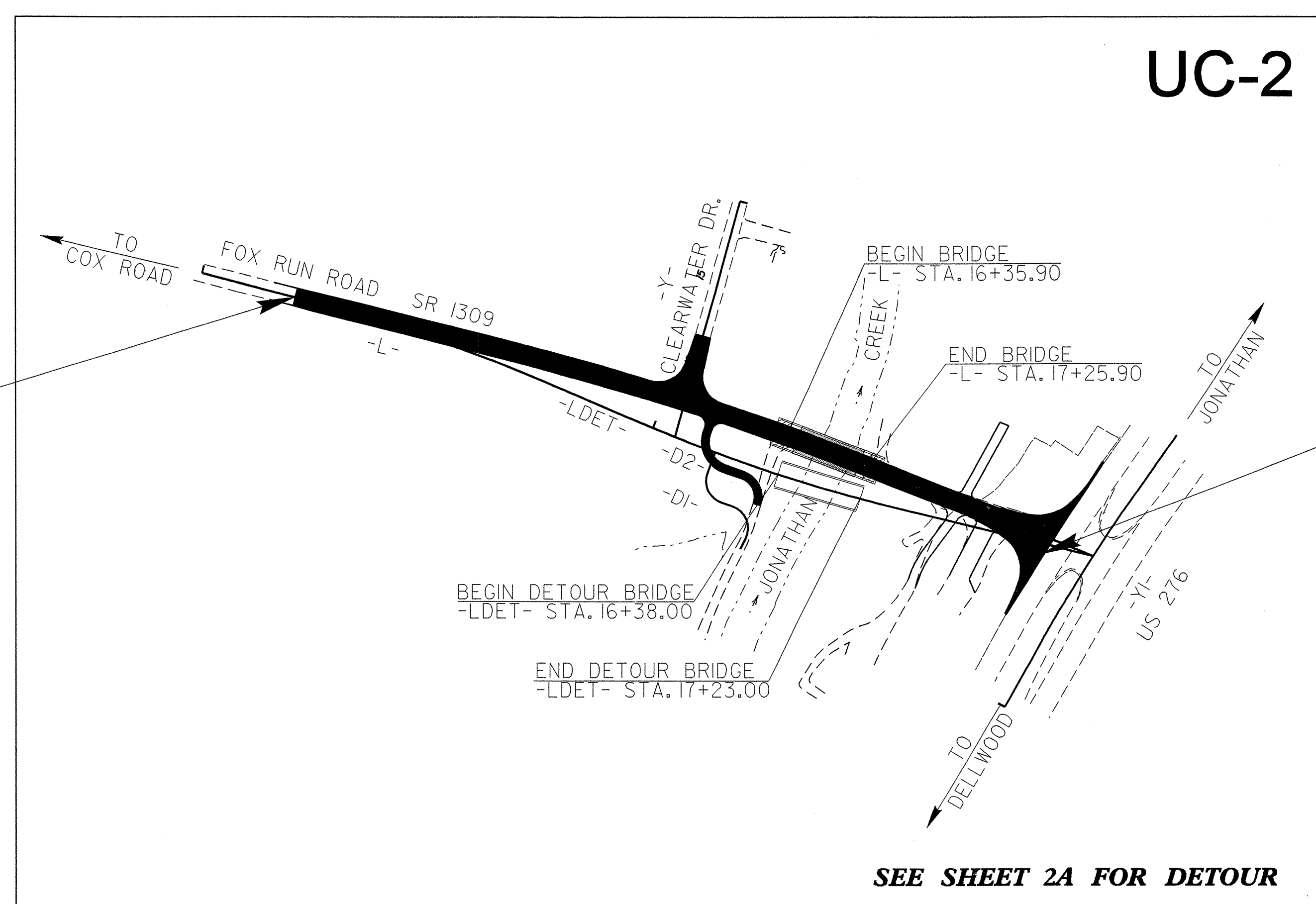
**LOCATION: BRIDGE NO. 329 OVER JONATHAN CREEK  
ON SR 1309**

**TYPE OF WORK: UTILITY RELOCATION**



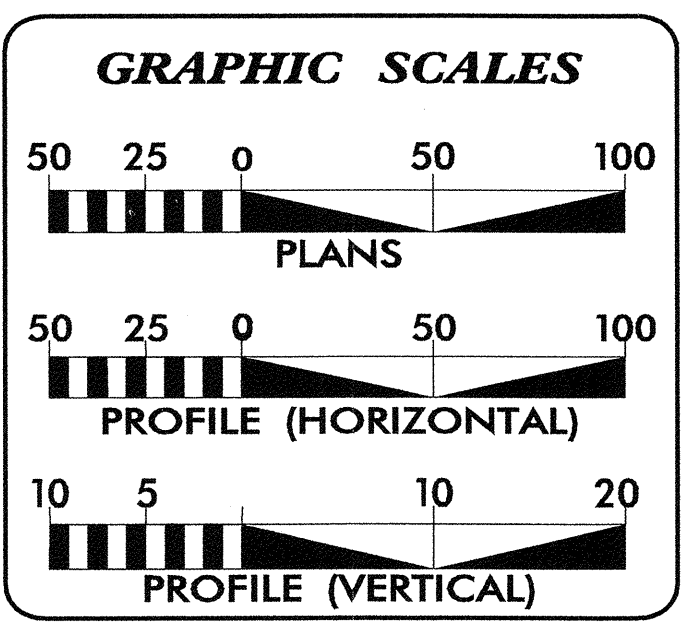
**CONTRACT: 33301.2.1**

**TIP PROJECT: B-3854**



POT -L- STA. 10+75.00  
BEGIN TIP PROJECT B-3854

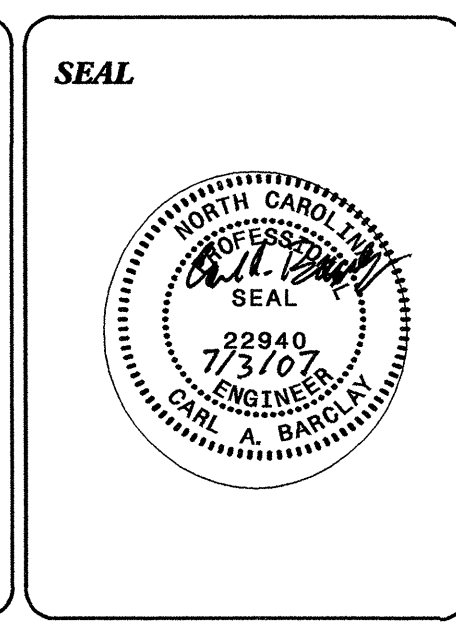
POT -L- STA. 19+35.75  
END TIP PROJECT B-3854



INDEX OF SHEETS	
SHEET NO.	DESCRIPTION
UC-1	TITLE SHEET
UC-2	UTILITY CONSTRUCTION PLAN SHEET
UC-3	PROFILE AND DETAIL SHEET

**WATER AND SEWER OWNERS ON PROJECT**

(1) WATER AND SEWER:  
MAGGIE VALLEY SANITARY DISTRICT

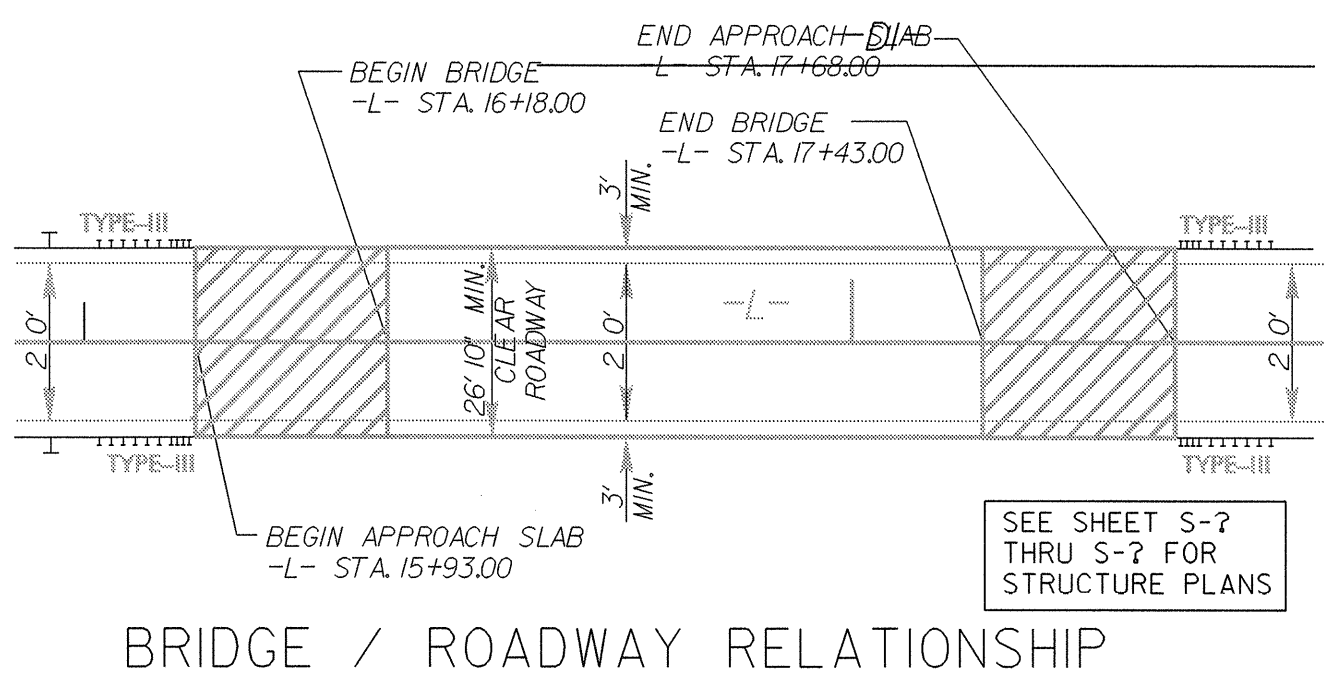
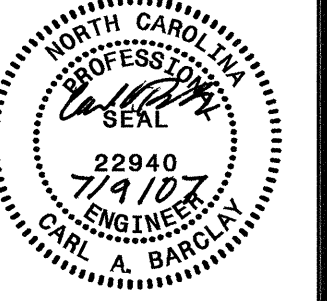


PREPARED IN THE OFFICE OF:  
**DIVISION OF HIGHWAYS  
PROJECT SERVICES  
UTILITY SECTION**

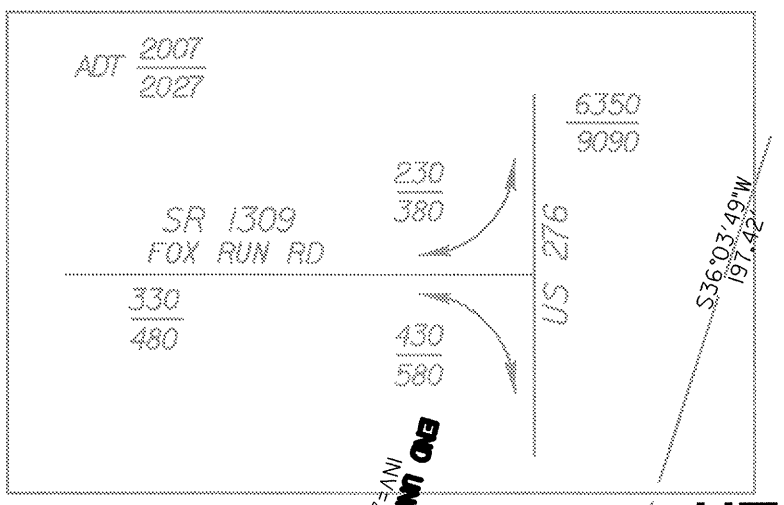
1591 MAIL SERVICES CENTER  
RALEIGH, NC 27699-1591  
PHONE (919) 250-4128  
FAX (919) 250-4119

**Roger Worthington, P.E.** UTILITIES SECTION ENGINEER  
**Carl Barclay, P.E.** UTILITIES SQUAD LEADER PROJECT ENGINEER  
**Ali Kouchehi** UTILITIES PROJECT DESIGNER

03-JUL-2007 11:16  
C:\UTIL\PROJECTS\33301.2.1\proj\b3854\_rdy\_tsh\_U01.dgn  
\$\$\$\$\$USERNAME\$\$\$\$\$

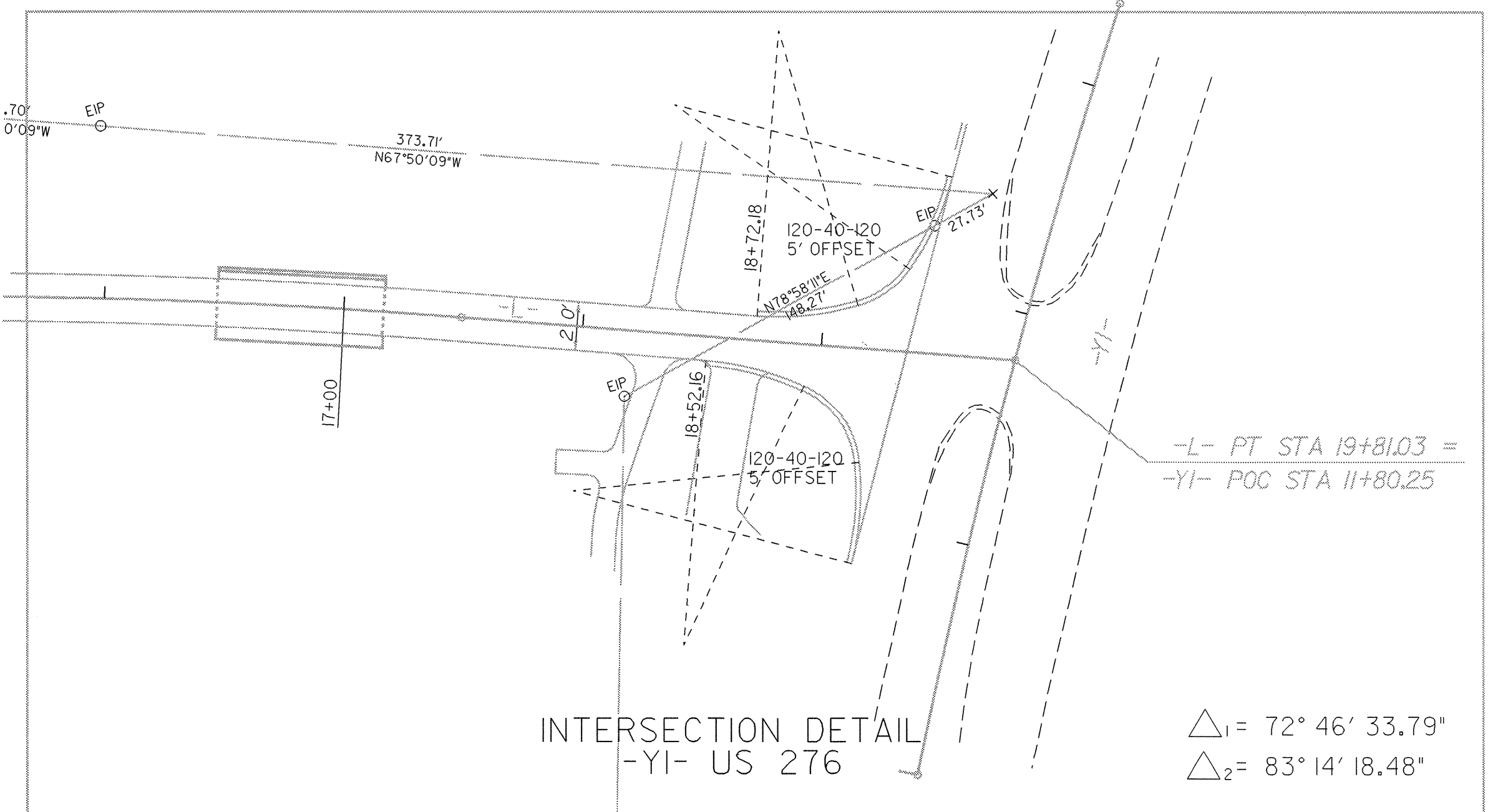
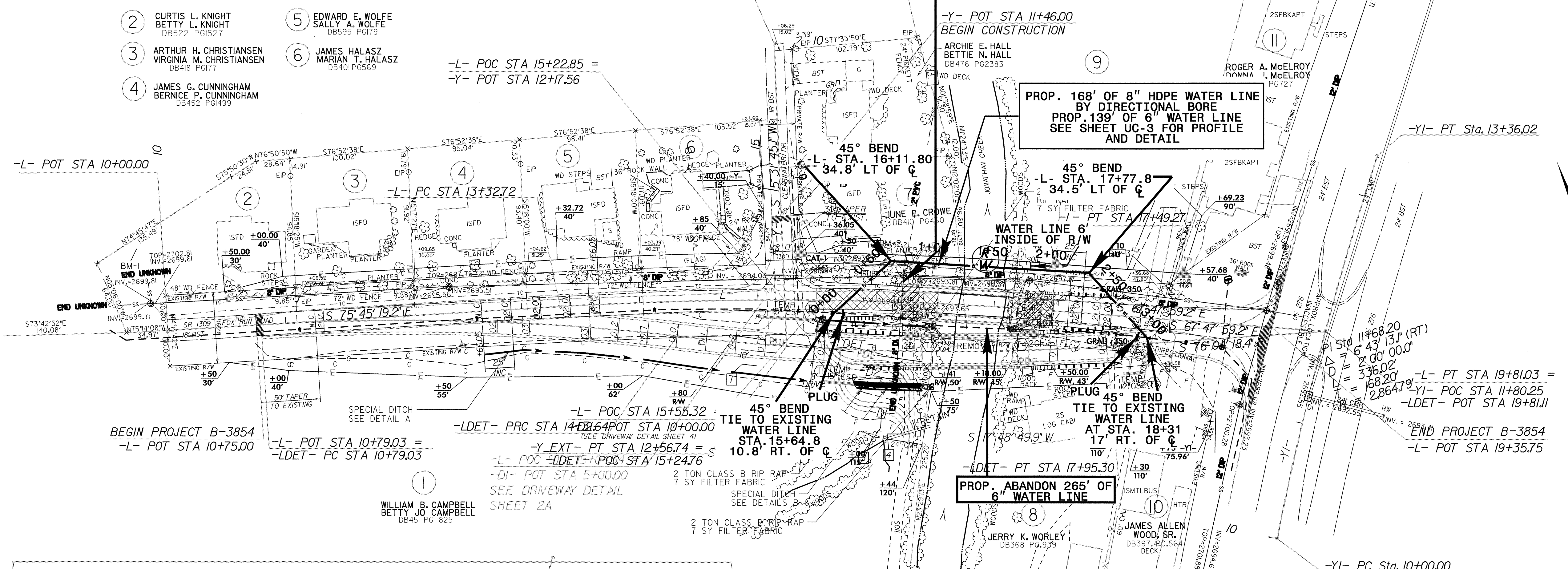


-L-	-LDET-	-YI-
PI Sta 15+41.33	PI Sta 12+55.80	PI Sta 16+13.97
$\Delta = 7^{\circ} 57' 20.0''$ (RT)	$\Delta = 10^{\circ} 06' 05.4''$ (RT)	$\Delta = 10^{\circ} 25' 04.6''$ (LT)
$D = 154' 35.5''$	$D = 2' 51' 53.2''$	$D = 2' 51' 53.2''$
$L = 416.55'$	$L = 352.61'$	$L = 363.66'$
$T = 208.61'$	$T = 176.76'$	$T = 182.33'$
$R = 3,000.00'$	$R = 2,000.00'$	$R = 2,000.00'$
SE = RC	SE = 0.03	SE = EXISTING
DS = 40 MPH	DS = 45 MPH	



**UTILITY CONSTRUCTION**

NOTE: THERE IS AN EXISTING 8" DI GRAVITY SEWER LINE THAT WILL BE EXPOSED DURING UNDERCUT. CONTRACTOR SHALL PROCEED WITH CAUTION WHILE WORKING WITHIN THE LIMITS OF SEWER LINE



**DATUM DESCRIPTION**

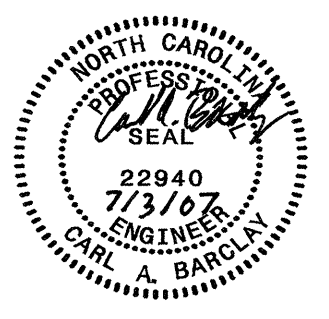
THE LOCALIZED COORDINATE SYSTEM DEVELOPED FOR THIS PROJECT IS BASED ON THE STATE PLANE COORDINATES ESTABLISHED BY NCGS FOR MONUMENT "CREEK" WITH NAD 83 STATE PLANE GRID COORDINATES OF NORTHING: 675536.100(11) EASTING: 802954.86(11) THE AVERAGE COMBINED GRID FACTOR USED ON THIS PROJECT (GROUND TO GRID) IS: 999757087 THE N.C. LAMBERT GRID BEARING AND LOCALIZED HORIZONTAL GROUND DISTANCE FROM "CREEK" TO -L- STATION 11+00.00 IS S 55°35'02.96" W 2034.14(11) ALL LINEAR DIMENSIONS ARE LOCALIZED HORIZONTAL DISTANCES VERTICAL DATUM USED IS NVD 29

NOTE: SEE SHEET 2A FOR -LDET- DETAIL  
 SEE SHEET 5 FOR -L- PROFILE  
 SEE SHEET 5 FOR -Y- PROFILE  
 SEE SHEET 5 FOR -DI- PROFILE

09-JUL-2007 13:58 r:\u0001\lives\rd\p01\B3854-rdy-psh04-uc-2.dgn

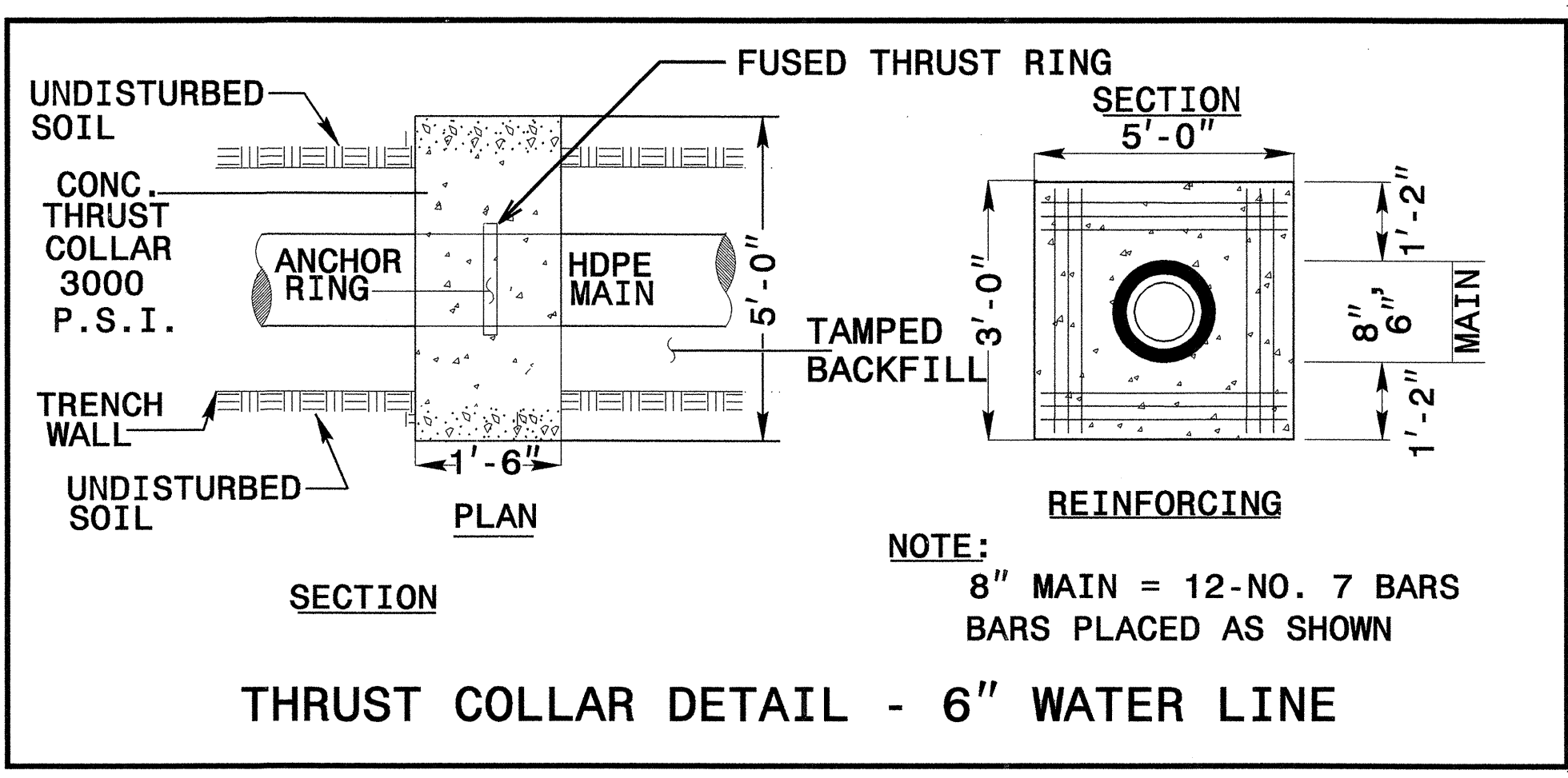
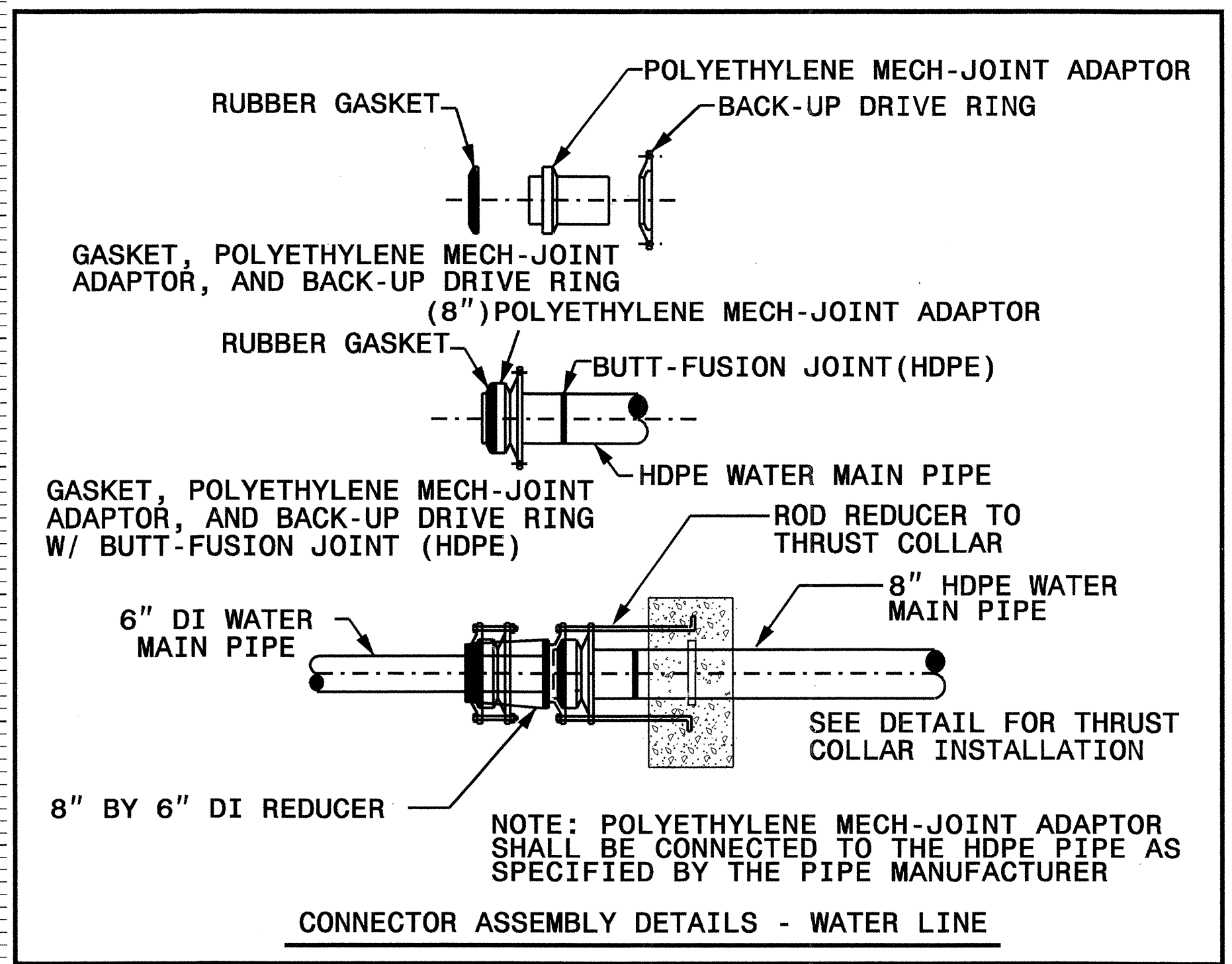
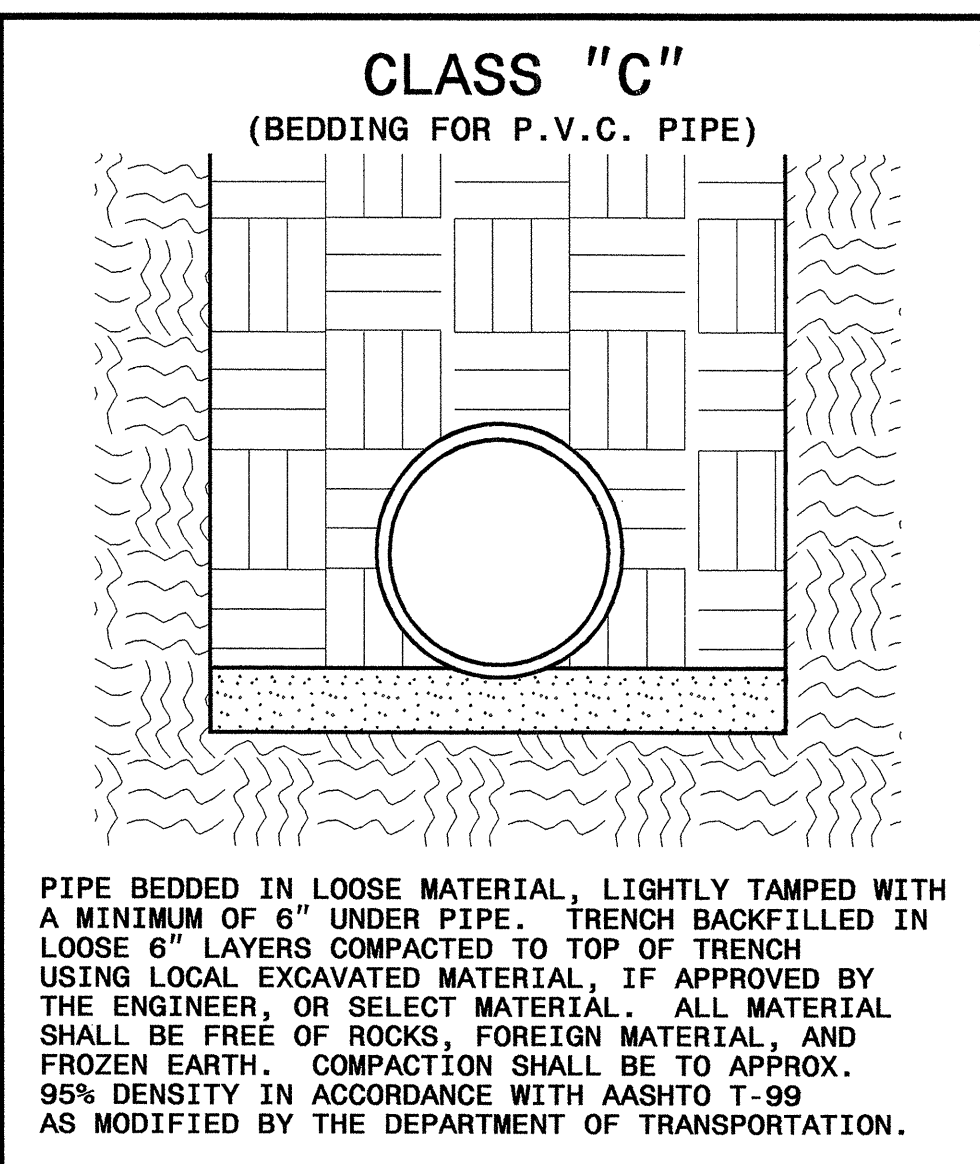
5/14/99

PROJECT REFERENCE NO. **B-3854** SHEET NO. **UC-3**  
 DESIGNED BY: **ARK**  
 DRAWN BY: **ARK**  
 CHECKED BY: **CAB**  
 APPROVED BY: **CAB**  
 REVISED:  
 NORTH CAROLINA DEPARTMENT OF TRANSPORTATION  
 PROJECT SERVICES UNIT  
 PHONE: (919)250-4128  
 FAX: (919)250-4119  
 UTILITY CONSTRUCTION PLANS ONLY



**UTILITY CONSTRUCTION**

MAXIMUM TRENCH WIDTH AT TOP OF PIPE			
NOMINAL PIPE SIZE (INCHES)	TRENCH WIDTH (INCHES)	NOMINAL PIPE SIZE (INCHES)	TRENCH WIDTH (INCHES)
4	28	20	44
6	30	24	48
8	32	30	54
10	34	36	60
12	36	42	66
14	38	48	72
16	40	54	78
18	42		



03-JUL-2007 10:51  
 P:\Utilities\Ray\Ut\Proj\B3854\ut\_wcr\_uc-3.dgn  
 5/14/99

