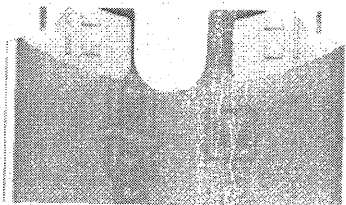
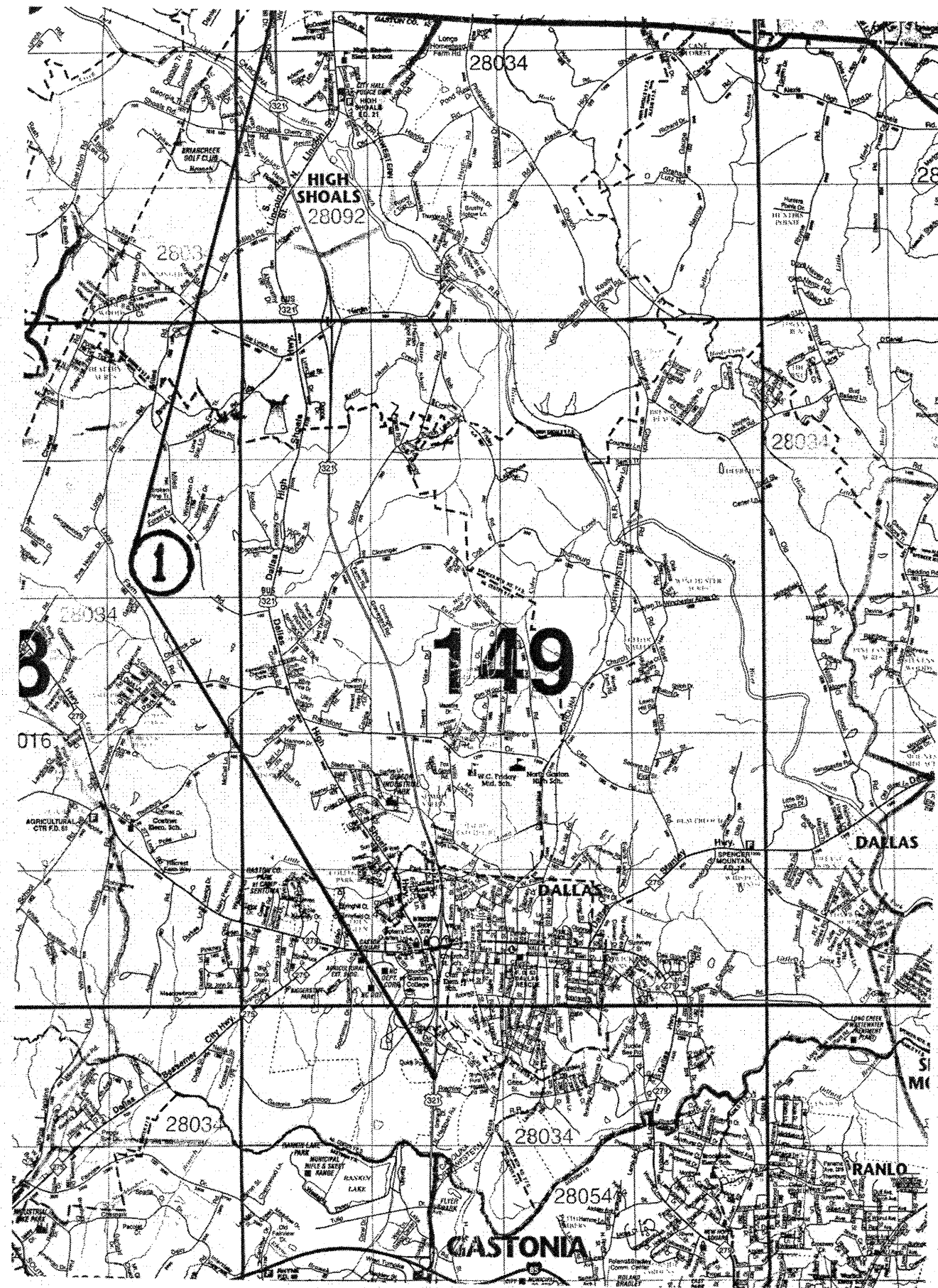
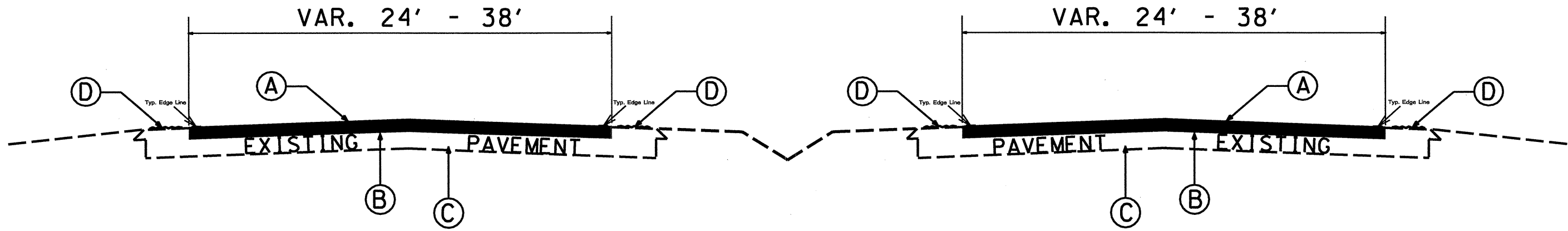
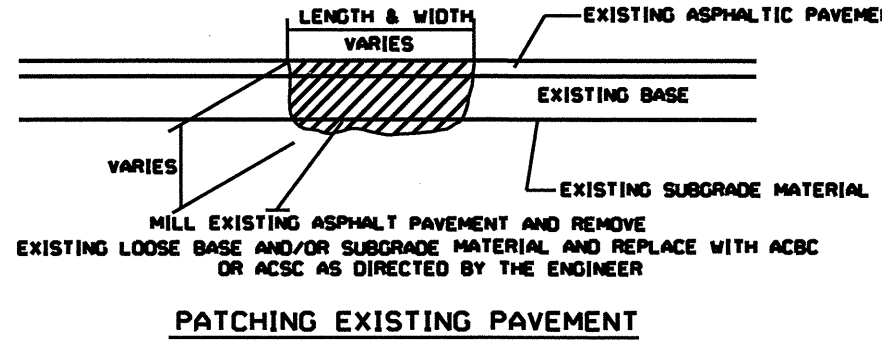


Sheet 1
12CR.10361.7
Gaston Co.



Sheet 2
 12CR.10361.7
 Gaston Co.

PAVEMENT SCHEDULE	
A	PROP. APPROX. 2 " ASPHALT CONCRETE SURFACE COURSE, TYPE S9.5C, AT AN AVERAGE RATE OF 224 LBS. PER SQ. YD. (BID OPTION NO. 1)
B	MILL ASPHALT PAVEMENT APPROX. 2" DEPTH (BID OPTION NO. 1)
C	EXISTING PAVEMENT
D	EXISTING RUMBLE STRIPS



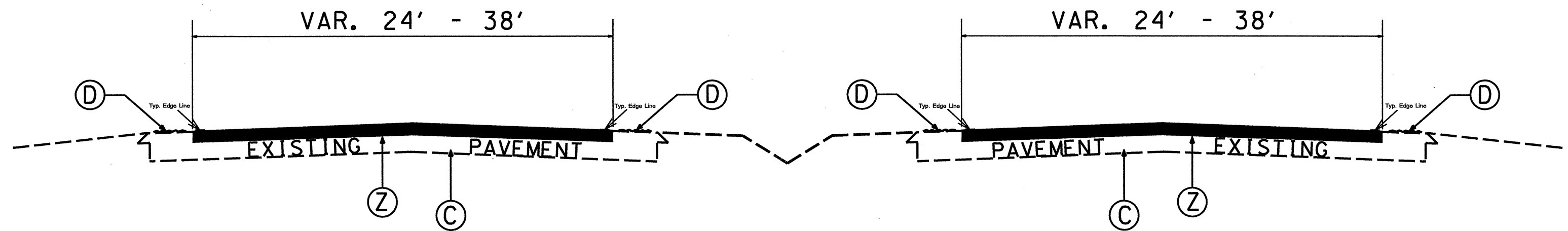
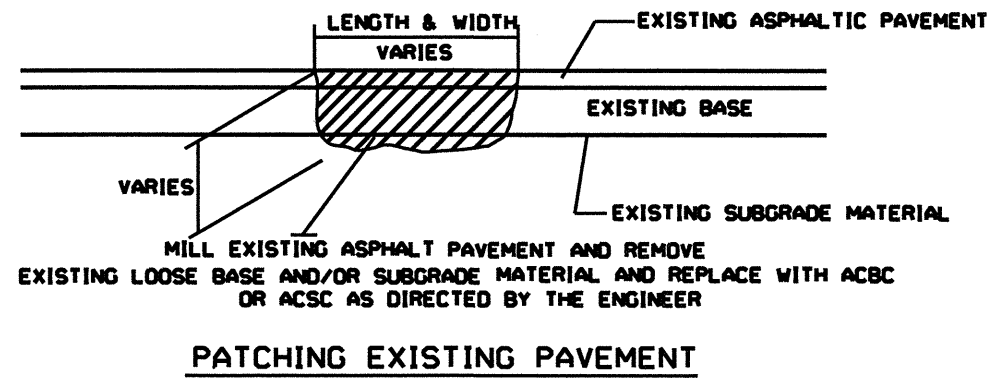
TYPICAL SECTION NO. 1

(MILLED EDGE TO BE BETWEEN RUMBLE STRIP AND PAINTED EDGE LINE)

USE TYPICAL NO. 1 IF USING OPTION NO. 1

Sheet 2
 12CR.10361.7
 Gaston Co.

PAVEMENT SCHEDULE	
C	EXISTING PAVEMENT
D	EXISTING RUMBLE STRIPS
Z	HOT IN-PLACE RECYCLED ASPHALT, S9.5C, 2" DEPTH (BID OPTION NO. 2)



TYPICAL SECTION NO. 2

(MILLED EDGE TO BE BETWEEN RUMBLE STRIP AND PAINTED EDGE LINE)

USE TYPICAL NO. 2 IF USING OPTION NO. 2

PROJECT NO.	SHEET NO.	TOTAL NO.
12CR.10361.7	4	

SUMMARY OF QUANTITIES

PROJECT NO	COUNTY	MAP NO	ROUTE	DESCRIPTION	TYP NO.	LENGTH MI	WIDTH FT	BASE QUANTITY	BID OPTION NO. 1			BID OPTION NO. 2			
								PATCHING EXISTING PAVEMENT TONS	2" MILLING SY	SURFACE COURSE, S9.5C TONS	PG 70-22 PLANT MIX TONS	HOT MIX ASPHALT ADMIXTURE TON	EMULSIFIED REJUVENATING AGENT GAL	HOT IN-PLACE RECYCLED ASPHALT, S9.5C SY	PG 64-22 PLANT MIX TONS
12CR.10361.7	Gaston	1	US 321	APPROX. 528 FT N OF ROECHLING ST. TO LINCOLN CO. LINE	1	8.1	24.5	5,855	270,216	30,264	1,816	4,729	27,022	270,216	237
TOTAL FOR PROJ NO. 12CR.10361.7								5,855	270,216	30,264	1,816	4,729	27,022	270,216	237

THERMOPLASTIC AND PAINT QUANTITIES

PROJECT NO	COUNTY	MAP NO	ROUTE	DESCRIPTION	4685000000-E		4686000000-E	4695000000-E	4721000000-E	4725000000-E	4905000000-N
					4" X 90 M WHITE THERMO LF	4" X 90 M YELLOW THERMO LF	4" X 120 M WHITE THERMO LF	8" X 90 M WHITE THERMO LF	THERMO MSG ONLY 120 M EA	THERMO RT ARROW 90 M EA	SNOW PLOWABLE MARKERS EA
12CR.10361.7	Gaston	1	US 321	APPROX. 528 FT N OF ROECHLING ST. TO LINCOLN CO. LINE	85,600	85,600	24,600	5,000	8	5	2,800
TOTAL FOR PROJ NO. 12CR.10361.7					171,200	171,200	24,600	5,000	8	5	2,800

