

09/08/99

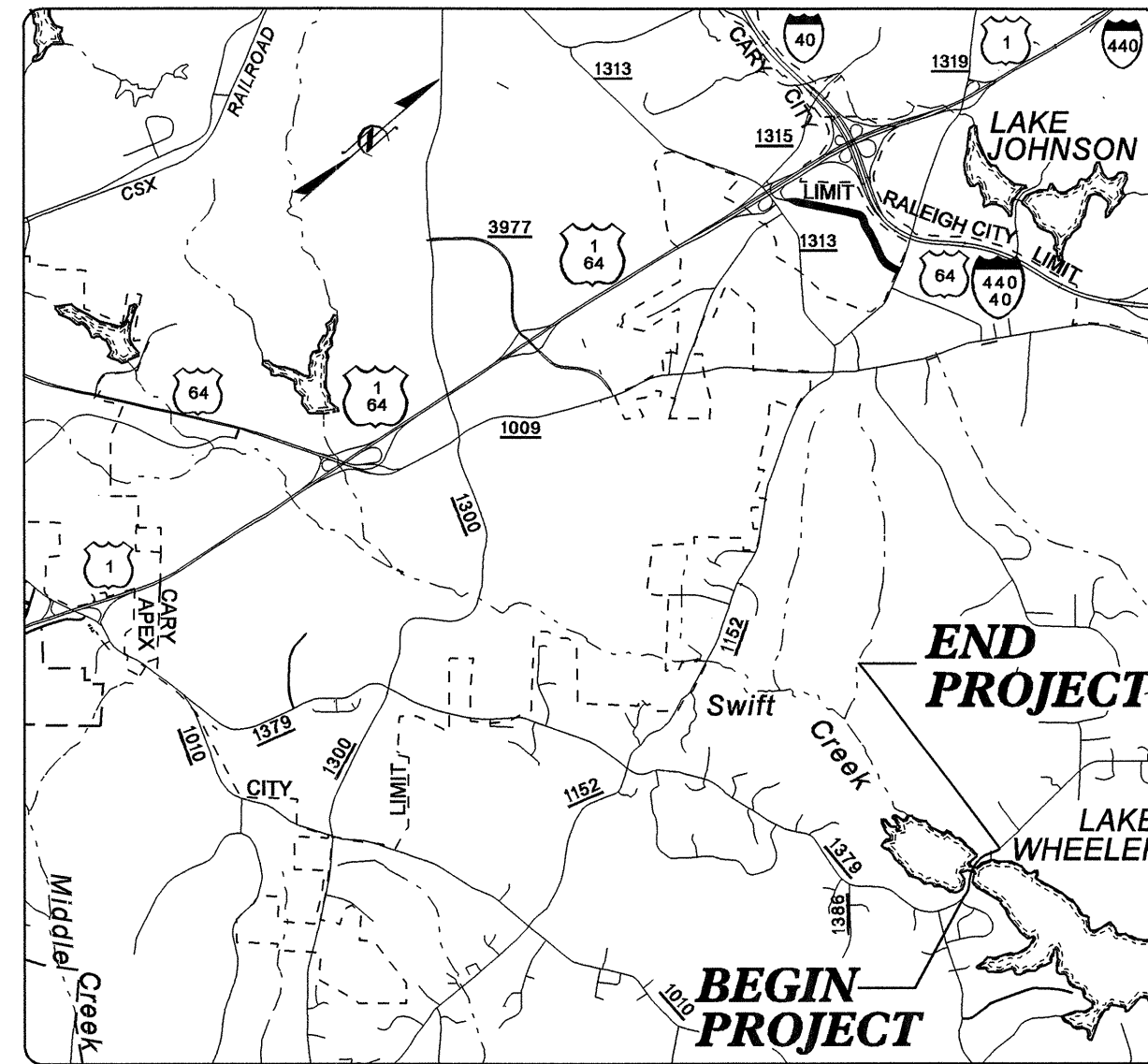
TIP PROJECT: B-3917

CONTRACT: C201619

T.I.P. NO.	SHEET NO.
B-3917	UO-1

STATE OF NORTH CAROLINA
DIVISION OF HIGHWAYS

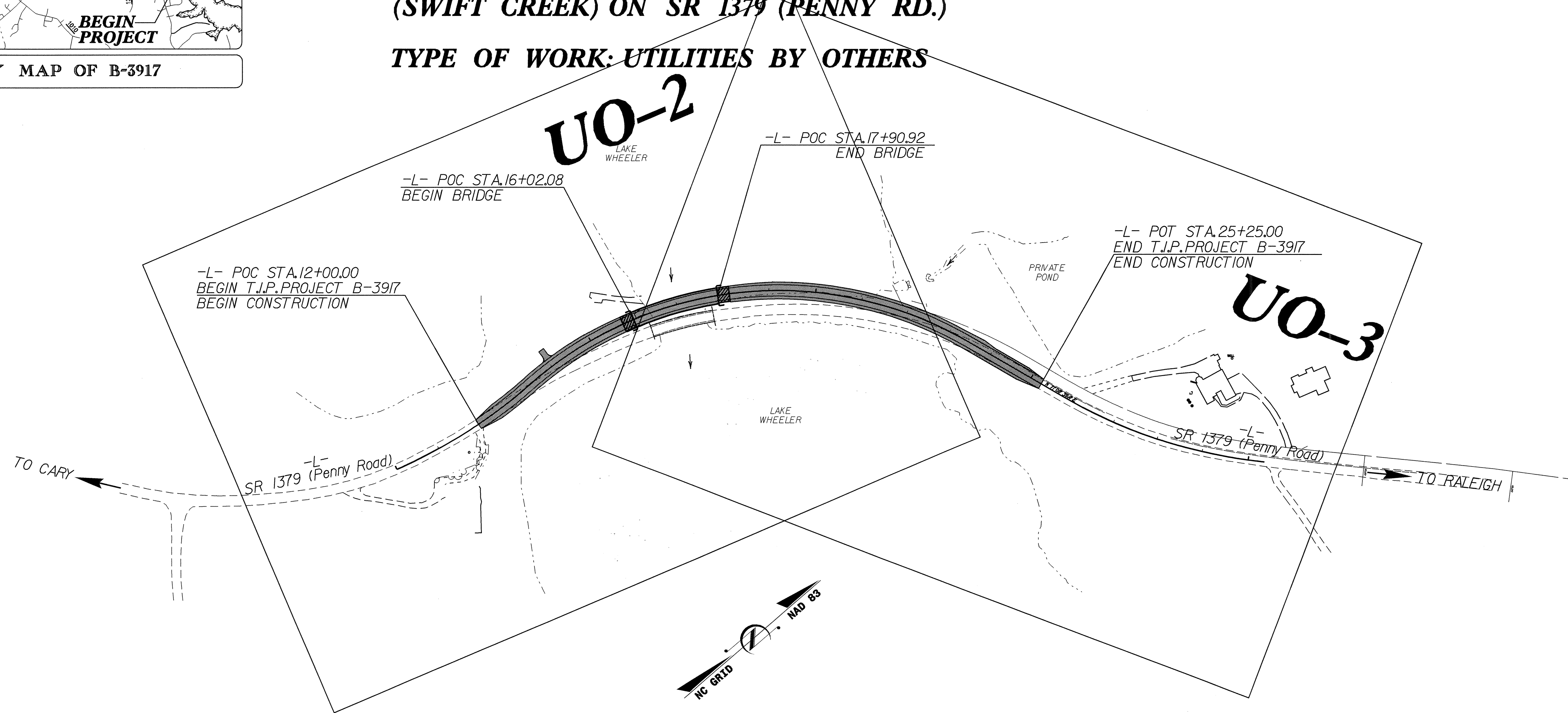
**UTILITY BY OTHERS PLANS
WAKE COUNTY**



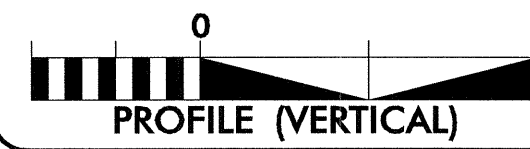
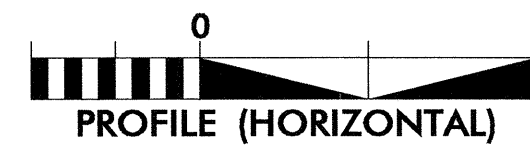
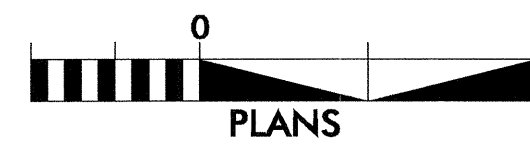
VICINITY MAP OF B-3917

**LOCATION: BRIDGE 311 OVER LAKE WHEELER
(SWIFT CREEK) ON SR 1379 (PENNY RD.)**

TYPE OF WORK: UTILITIES BY OTHERS



GRAPHIC SCALES

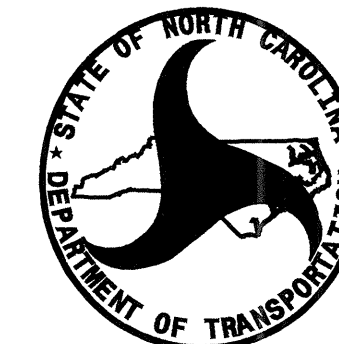


INDEX OF SHEETS

<u>SHEET NO.</u>	<u>DESCRIPTION</u>
UO-1	TITLE SHEET
UO-2 THRU UO-3	UTILITY BY OTHERS PLAN SHEETS

UTILITY OWNERS ON PROJECT

- (1) PROGRESS ENERGY - POWER DISTRIBUTION
- (2) BELL SOUTH - TELEPHONE
- (3) TIME WARNER CABLE - CATV



PREPARED IN THE OFFICE OF:
**DIVISION OF HIGHWAYS
DESIGN SERVICES
UTILITY SECTION**

1591 MAIL SERVICES CENTER
RALEIGH, NC 27699-1591
PHONE (919) 250-4128
FAX (919) 250-4119

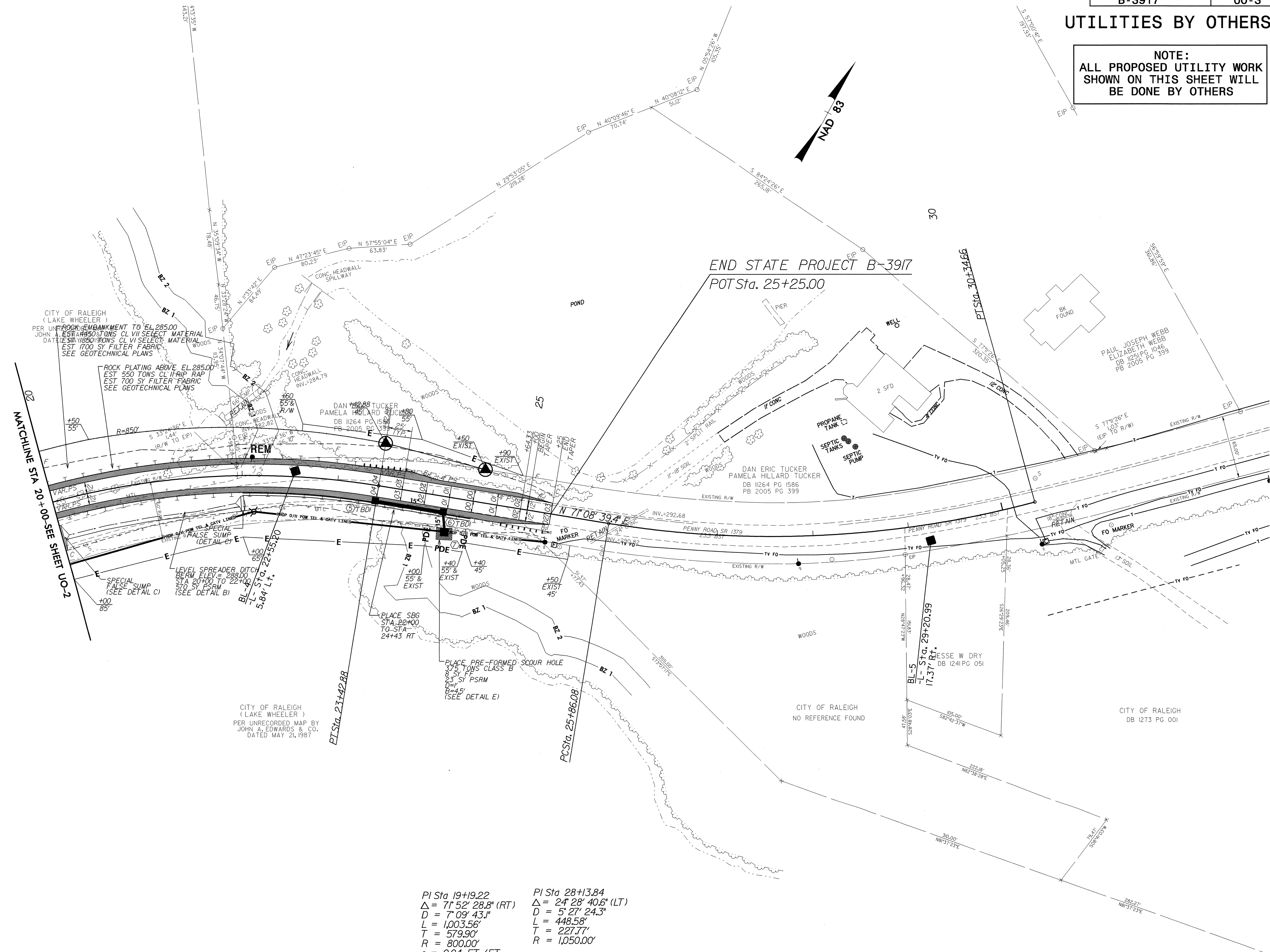
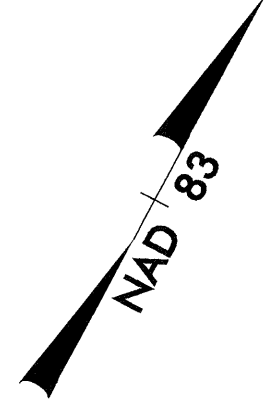
Roger Worthington, P.E. UTILITIES SECTION ENGINEER
R. B. WILKINS, P.E. UTILITIES SQUAD LEADER PROJECT ENGINEER
MICHAEL R. BRIGHT UTILITIES PROJECT DESIGNER

I:\MAY_2007_07:35
C:\UTILITIES_VRDY\UT\proj\B3917\ut_title_uol_psh.dgn
\$\$\$\$\$USER\$NAME\$\$\$\$\$

UTILITIES BY OTHERS

NOTE:
 ALL PROPOSED UTILITY WORK
 SHOWN ON THIS SHEET WILL
 BE DONE BY OTHERS

5/14/99



PI Sta 19+9.22
 $\Delta = 71' 52'' 28.8''$ (RT)
 $D = 7' 09'' 43.1''$
 $L = 1,003.56'$
 $T = 579.90'$
 $R = 800.00'$
 $e = 0.04$ FT./FT.
 R.O. = SEE PLANS

PI Sta 28+13.84
 $\Delta = 24' 28'' 40.6''$ (LT)
 $D = 5' 27'' 24.3''$
 $L = 448.58'$
 $T = 227.77'$
 $R = 1,050.00'$

07-MAY-2007 09:23
 r:\utilities\cd\proj\lb3917-ut_5_uc3_psh.dgn