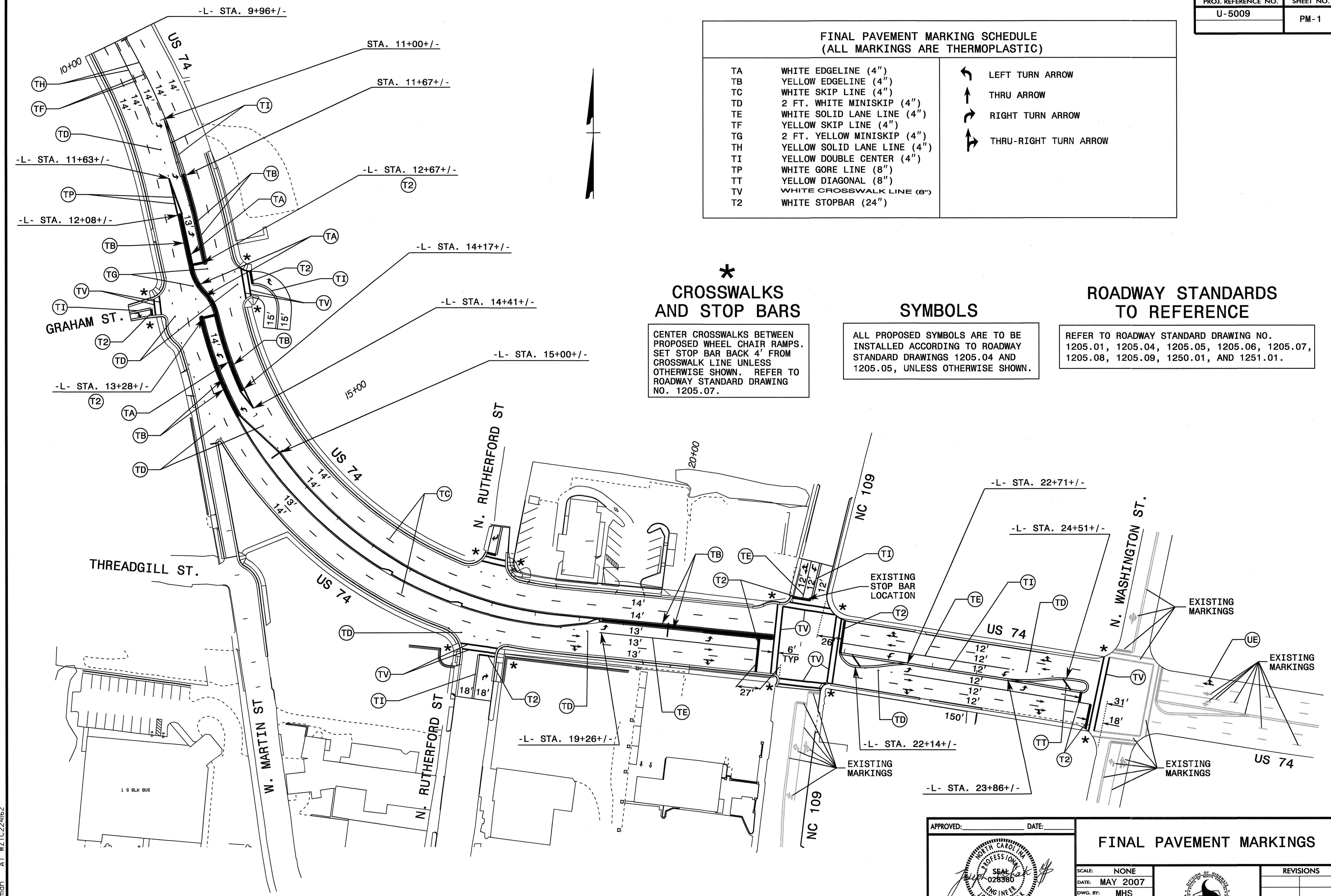


### FINAL PAVEMENT MARKING SCHEDULE (ALL MARKINGS ARE THERMOPLASTIC)

TA	WHITE EDGELINE (4")	↶	LEFT TURN ARROW
TB	YELLOW EDGELINE (4")	↕	THRU ARROW
TC	WHITE SKIP LINE (4")	↷	RIGHT TURN ARROW
TD	2 FT. WHITE MINISKIP (4")	↷	THRU-RIGHT TURN ARROW
TE	WHITE SOLID LANE LINE (4")		
TF	YELLOW SKIP LINE (4")		
TG	2 FT. YELLOW MINISKIP (4")		
TH	YELLOW SOLID LANE LINE (4")		
TI	YELLOW DOUBLE CENTER (4")		
TP	WHITE GORE LINE (8")		
TT	YELLOW DIAGONAL (8")		
TV	WHITE CROSSWALK LINE (8")		
T2	WHITE STOPBAR (24")		



**\*  
CROSSWALKS  
AND STOP BARS**

CENTER CROSSWALKS BETWEEN PROPOSED WHEEL CHAIR RAMPS. SET STOP BAR BACK 4' FROM CROSSWALK LINE UNLESS OTHERWISE SHOWN. REFER TO ROADWAY STANDARD DRAWING NO. 1205.07.

**SYMBOLS**

ALL PROPOSED SYMBOLS ARE TO BE INSTALLED ACCORDING TO ROADWAY STANDARD DRAWINGS 1205.04 AND 1205.05, UNLESS OTHERWISE SHOWN.

**ROADWAY STANDARDS  
TO REFERENCE**

REFER TO ROADWAY STANDARD DRAWING NO. 1205.01, 1205.04, 1205.05, 1205.06, 1205.07, 1205.08, 1205.09, 1250.01, AND 1251.01.

23-MAY-2007 12:18  
 \\DOT\DFSROOT\GROUPS-WZTCC\design\grp\up2\_dg2sqb\steelman\us 74 realig.in wadesboro\top\top\us009\_top.pmp.dgn  
 mst\steelman AT WZT0224f62

APPROVED: _____ DATE: _____	<b>FINAL PAVEMENT MARKINGS</b>	
	SCALE: NONE	
	DATE: MAY 2007	
	DWG. BY: MHS	
	DESIGN BY: MHS	
REVIEWED BY: JI	REVISIONS	