

STATE OF NORTH CAROLINA
DIVISION OF HIGHWAYS

STATE PROJECT REFERENCE NO.	SHEET NO.
B-4271	TCP-1

**PLAN FOR PROPOSED
TRAFFIC CONTROL, MARKING & DELINEATION
SAMPSON COUNTY**

B-4271

ROADWAY STANDARD DRAWINGS

THE FOLLOWING ROADWAY STANDARDS AS APPEAR IN "ROADWAY STANDARD DRAWINGS"-PROJECT SERVICES UNIT-N.C. DEPARTMENT OF TRANSPORTATION-RALEIGH, N.C., DATED JULY 2006 ARE APPLICABLE TO THIS PROJECT AND BY REFERENCE HEREBY ARE CONSIDERED A PART OF THESE PLANS:

STD. NO.	TITLE
1101.03	TEMPORARY ROAD CLOSURES
1101.11	TRAFFIC CONTROL DESIGN TABLES
1145.01	BARRICADES
1205.01	PAVEMENT MARKINGS - LINE TYPES & OFFSETS
1205.02	PAVEMENT MARKINGS - 2 LANE & MULTILANE ROADWAYS
1205.12	PAVEMENT MARKINGS - BRIDGES
1250.01	PAVEMENT MARKER SPACING
1251.01	RAISED PAVEMENT MARKERS (TEMPORARY & PERMANENT)
1261.01	GUARDRAIL & BARRIER DELINEATOR SPACING
1261.02	GUARDRAIL & BARRIER DELINEATOR TYPES
1262.01	GUARDRAIL END DELINEATION

INDEX OF SHEETS

SHEET NO.	TITLE
TCP-1	LIST OF APPLICABLE ROADWAY STANDARD DRAWINGS, LEGEND, INDEX OF SHEETS AND PAVEMENT MARKING SCHEDULE
TCP-2	GENERAL NOTES AND PHASING
TCP-3	CLOSURE OF BRIDGE #98

LEGEND

- GENERAL**
- ← DIRECTION OF TRAFFIC FLOW
 - ↑ NORTH ARROW
 - PROPOSED PVMT. - - - - - EXIST. PVMT.
 - WORK AREA
 - ▨ REMOVAL OF EXISTING PAVEMENT

- TRAFFIC CONTROL DEVICES**
- I TYPE I BARRICADE
 - II TYPE II BARRICADE
 - ▨ TYPE III BARRICADE
 - ▲ CONE
 - DRUM ◎ SKINNY DRUM
 - ⦿ FLASHING ARROW PANEL (TYPE C)
 - ⊥ STATIONARY SIGN
 - ⊢ PORTABLE SIGN
 - ⊙ STATIONARY OR PORTABLE SIGN
 - ⋈ CRASH CUSHION
 - ◁ CHANGEABLE MESSAGE SIGN
 - ▨ TRUCK MOUNTED IMPACT ATTENUATOR (TMIA)
 - ⊞ POLICE
 - FLAGGER

- PAVEMENT MARKINGS**
- CRYSTAL/CRYSTAL PAVEMENT MARKER
 - ◆ YELLOW/YELLOW PAVEMENT MARKER
 - CRYSTAL/RED PAVEMENT MARKER
 - ↔ PAVEMENT MARKING SYMBOLS

B-4271 PAVEMENT MARKING SCHEDULE

SYMBOL	DESCRIPTION	PAY ITEM QUANTITY BREAKDOWN		TOTAL QUANTITY
		FINAL PAVEMENT MARKINGS PAINT (4")	MARKERS	
PA	WHITE EDGELINE (2X)	3600	LF	TOTAL 7200 LF
PI	YELLOW DOUBLE CENTER (2X)	3600	LF	
MA	YELLOW & YELLOW PERMANENT RAISED PAVEMENT MARKERS	15	EA	TOTAL 15 EA

24-APR-2007 08:58 \\dot\dfs\00101\proj\1\trproj\trafficcontrol\tcp\b4271.tc_.tcd.dgn
dhbeard AT WZTC24251

TIP PROJECT:

APPROVED: <i>M. McDiarmid</i> DATE: 4/25/07	PLAN PREPARED BY: N.C.D.O.T. WORK ZONE TRAFFIC CONTROL UNIT
SEAL 	J. S. BOURNE, P.E. TRAFFIC CONTROL ENGINEER
	M. McDIARMID, P.E. TRAFFIC CONTROL PROJECT ENGINEER
	C. B. HOWARD TRAFFIC CONTROL PROJECT DESIGN ENGINEER
	D. H. BEARD TRAFFIC CONTROL DESIGN ENGINEER / TECHNICIAN

GENERAL NOTES

ADAPT THE TRAFFIC CONTROL PLANS, WHEN DIRECTED BY THE ENGINEER, TO MEET FIELD CONDITIONS TO PROVIDE SAFE AND EFFICIENT TRAFFIC MOVEMENT. CHANGES MAY BE REQUIRED WHEN PHYSICAL DIMENSIONS IN THE DETAIL DRAWINGS, STANDARD DETAILS AND ROADWAY DETAILS ARE NOT ATTAINABLE, OR RESULT IN DUPLICATE, OR UNDESIRE OVERLAPPING OF DEVICES. MODIFICATION MAY INCLUDE: MOVING, SUPPLEMENTING, COVERING OR REMOVAL OF DEVICES.

THE FOLLOWING GENERAL NOTES APPLY AT ALL TIMES FOR THE DURATION OF THE CONSTRUCTION PROJECT, EXCEPT WHEN OTHERWISE NOTED IN THE PLAN, OR DIRECTED BY THE ENGINEER.

TRAFFIC PATTERN ALTERATIONS

- A) NOTIFY THE ENGINEER TWENTY ONE (21) CALENDAR DAYS PRIOR TO ANY TRAFFIC PATTERN ALTERATION.

SIGNING

- B) STATE FORCES WILL BE RESPONSIBLE FOR PERMANENT SIGNING.
- C) STATE FORCES WILL BE RESPONSIBLE FOR DETOUR AND WARNING SIGNS WITHIN AND OFF THE PROJECT LIMITS.
- D) STATE FORCES WILL COVER OR REMOVE ALL DETOUR SIGNS WITHIN AND OFF THE PROJECT LIMITS WHEN A DETOUR IS NOT IN OPERATION.
- E) ENSURE ALL NECESSARY SIGNING IS IN PLACE PRIOR TO ALTERING ANY TRAFFIC PATTERN.

TRAFFIC CONTROL DEVICES

- F) PLACE TYPE III BARRICADES, WITH "ROAD CLOSED" SIGN R11-2 ATTACHED, OF SUFFICIENT LENGTH TO CLOSE ENTIRE ROADWAY. STAGGER OR OVERLAP BARRICADES TO ALLOW FOR INGRESS OR EGRESS.

PAVEMENT MARKINGS AND MARKERS

- G) INSTALL PAVEMENT MARKINGS AND PAVEMENT MARKERS ON THE FINAL SURFACE AS FOLLOWS:

ROAD NAME	MARKING	MARKER
SR 1246	PAINT	PERMANENT RAISED

- H) PLACE AT LEAST TWO APPLICATIONS OF PAINT PAVEMENT MARKINGS ON THE FINAL WEARING SURFACE ON NEW ASPHALT PAVEMENT. PLACE ADDITIONAL APPLICATIONS OF PAINT UPON SUFFICIENT DRYING TIME, AS DETERMINED BY THE ENGINEER.
- I) TIE PROPOSED PAVEMENT MARKING LINES TO EXISTING PAVEMENT MARKING LINES.

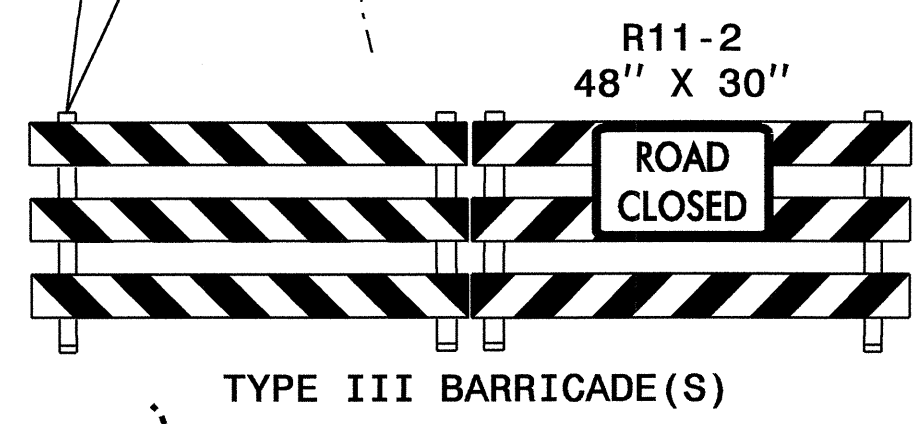
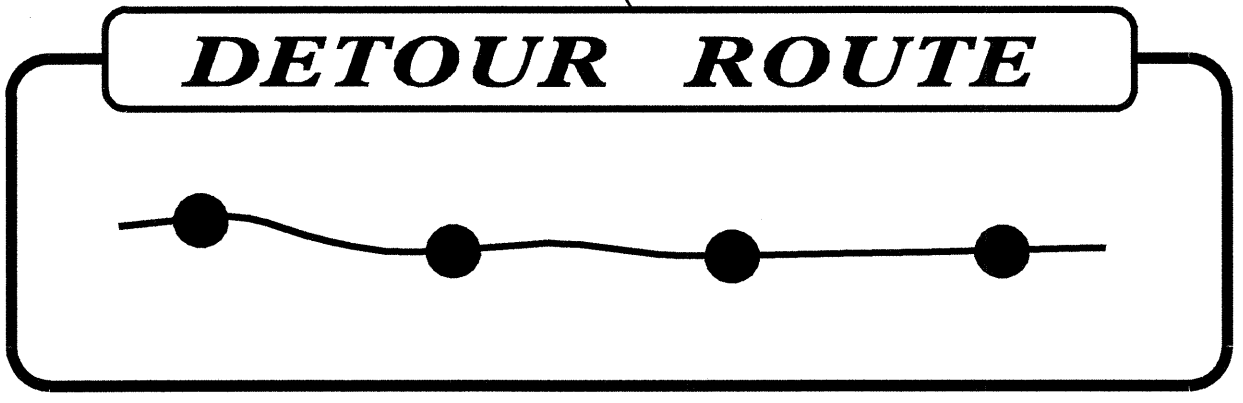
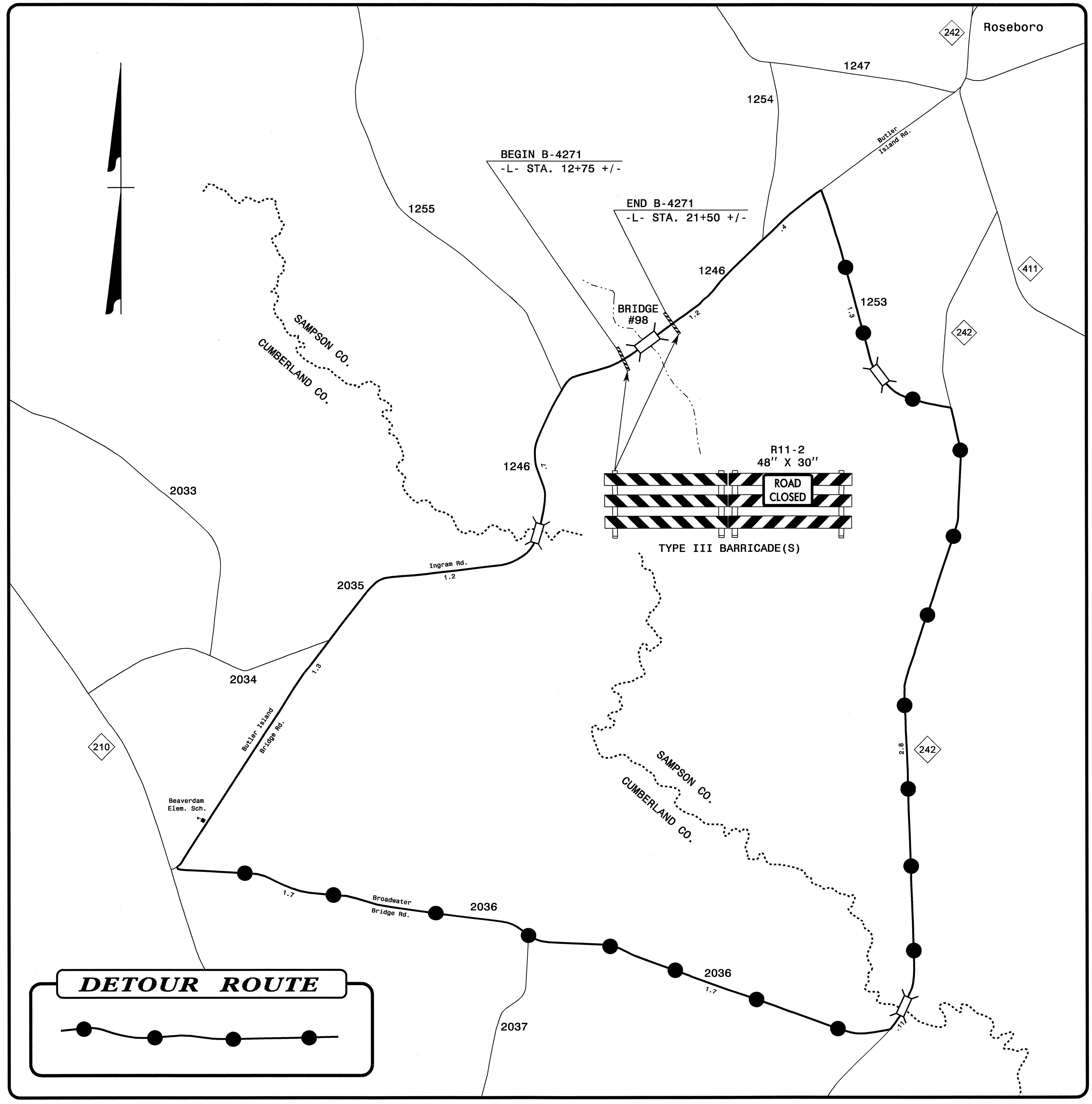
PHASING

PHASE I

- STEP 1) NOTIFY STATE FORCES TO INSTALL DETOUR SIGNING WITHIN AND OFF THE PROJECT LIMITS NO MORE THAN THREE (3) DAYS BEFORE ROAD CLOSURE. IF SIGNS ARE INSTALLED MORE THAN THREE (3) DAYS BEFORE ROAD CLOSURE, NOTIFY STATE FORCES TO COVER ALL DETOUR SIGNS ACCORDING TO STANDARD SPECIFICATION SECTION 1110-1 AND 1110-3.
- STEP 2) PLACE TRAFFIC ON OFF-SITE DETOUR AND CLOSE SR 1246 (BUTLER ISLAND RD.) USING TYPE III BARRICADES WITH "ROAD CLOSED" SIGN R11-2 ATTACHED, AT -L- STA. 12+75 +/- AND -L- STA. 21+50 +/- . SEE SHEET TCP-3.
- STEP 3) REMOVE EXISTING BRIDGE #98 AND APPROACHES AND CONSTRUCT THE PROPOSED BRIDGE AND APPROACHES UP TO AND INCLUDING THE FINAL LAYER OF SURFACE COURSE FROM -L- STA. 12+75 +/- TO -L- STA. 21+50 +/- . INSTALL FINAL PAVEMENT MARKINGS AND MARKERS (SEE FINAL PAVEMENT MARKING SCHEDULE ON SHEET TCP-1).
- STEP 4) REMOVE TRAFFIC CONTROL DEVICES AND OPEN SR 1246 (BUTLER ISLAND RD.) AND NOTIFY STATE FORCES TO REMOVE OFF-SITE AND ON-SITE DETOUR SIGNING.

25-APR-2007 11:41
 \\dot\dfsroot\0\pro\1\ip\projects-b\4271\trafficcontrol\top\4271_L_top2.dgn
 AT WZC24251
 dhbeard

APPROVED: <i>M. M. [Signature]</i> DATE: <i>4/25/07</i>		GENERAL NOTES AND PHASING	
	SCALE: NONE		REVISIONS
	DATE: SEP. 06		
	DWG. BY: DHB		
	DESIGN BY: DHB		
REVIEWED BY: CBH			
			CADD FILE



24-APR-2007 09:45
 \\dot\dfs\0010\proj\tr\proj\traffic\tr\afficocontrol\top\b4271\top\top3.dgn
 AT WZTC22425
 dibeard

APPROVED: <i>[Signature]</i> DATE: 4/25/07	CLOSURE OF BRIDGE #98	
	SCALE: NONE	
	DATE: SEP. 06	
	DWG. BY: DHB	
	DESIGN BY: DHB	
REVIEWED BY: CBH	REVISIONS	