

TIP PROJECT: B-4215

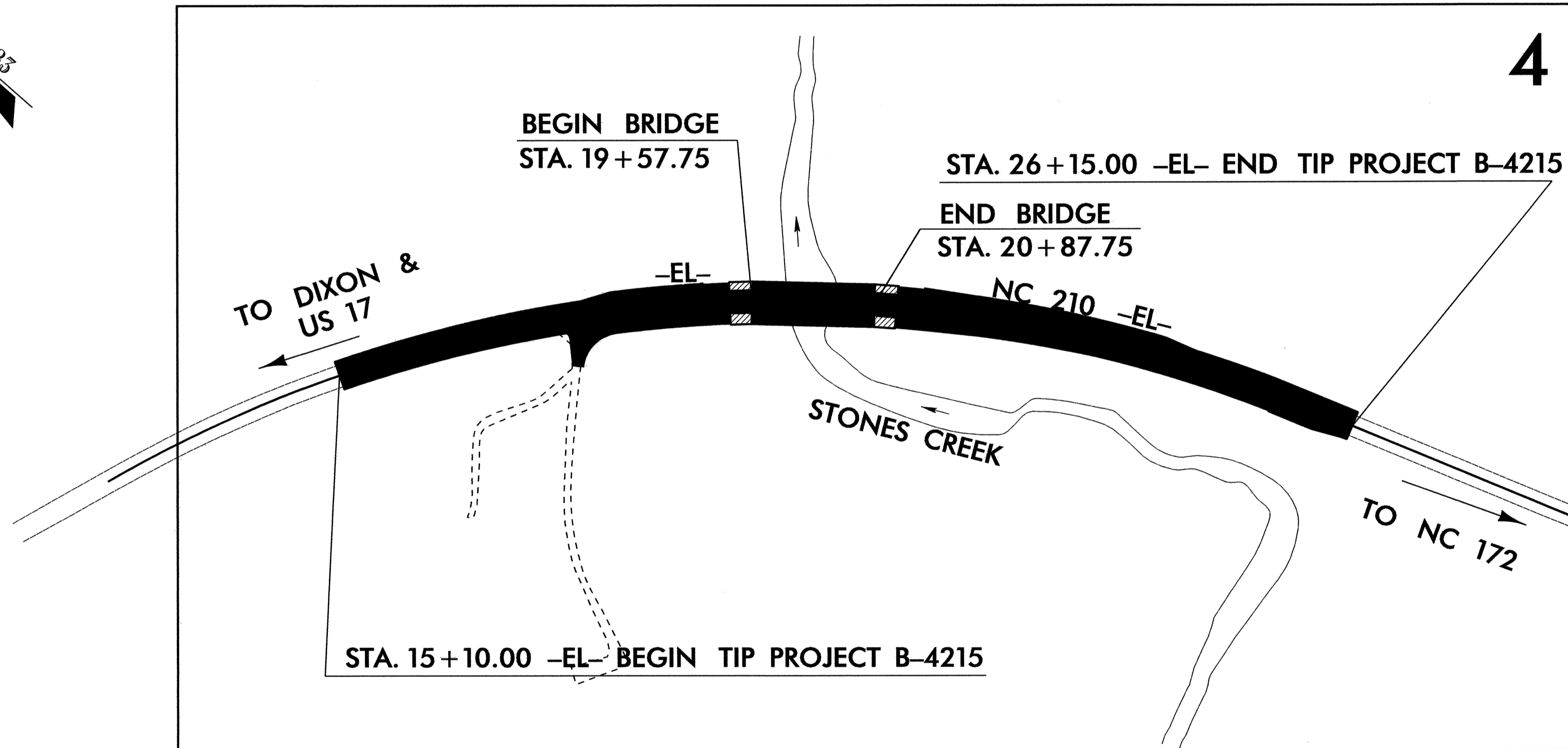
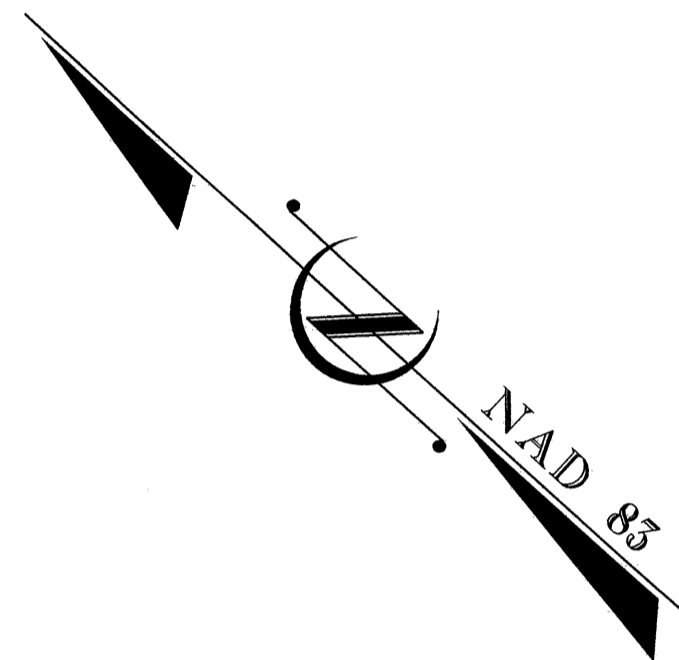
STATE OF NORTH CAROLINA
DIVISION OF HIGHWAYS

PLAN FOR PROPOSED
HIGHWAY EROSION CONTROL

ONSLOW COUNTY

LOCATION: BRIDGE NO. 19 OVER STONES CREEK AND APPROACHES ON NC 210

TYPE OF WORK: GRADING, PAVING, DRAINAGE, AND STRUCTURE



STATE	STATE PROJECT REFERENCE NO.	SHEET NO.	TOTAL SHEETS
N.C.	B-4215	EC-1	
STATE PROJ. NO.	F.A. PROJ. NO.	DESCRIPTION	

EROSION AND SEDIMENT CONTROL MEASURES

Std. #	Description	Symbol
1630.03	Streambank Reforestation	
1630.05	Temporary Silt Ditch	
1605.01	Temporary Diversion	
1605.01	Temporary Silt Fence	
1606.01	Special Sediment Control Fence	
1622.01	Temporary Berms and Slope Drains	
1630.01	Riser Basin	
1630.02	Silt Basin Type B	
1633.01	Temporary Rock Silt Check Type-A	
1633.01	Temporary Rock Silt Check Type-B	
1634.01	Temporary Rock Sediment Dam Type-A	
1634.02	Temporary Rock Sediment Dam Type-B	
1635.01	Rock Pipe Inlet Sediment Trap Type-A	
1635.02	Rock Pipe Inlet Sediment Trap Type-B	
1630.04	Stilling Basin	
1632.01	Rock Inlet Sediment Trap: Type A	
1632.02	Type B	
1632.03	Type C	

THIS PROJECT CONTAINS EROSION CONTROL PLANS FOR CLEARING AND GRUBBING PHASE OF CONSTRUCTION.

HIGH QUALITY WATER(S) EXIST ON THIS PROJECT
High Quality Water Zone(s) Exist From Sta. _____ to Sta. _____
Begin project _____ End Project _____
Refer To E. C. Special Provisions for Special Considerations.

ENVIRONMENTALLY SENSITIVE AREA(S) EXIST ON THIS PROJECT
Refer To E. C. Special Provisions for Special Considerations.

THIS PROJECT HAS BEEN DESIGNED TO SENSITIVE WATERSHED STANDARDS.

GRAPHIC SCALE

0

PLANS

0

PROFILE (HORIZONTAL)

0

PROFILE (VERTICAL)

ROADSIDE ENVIRONMENTAL UNIT
DIVISION OF HIGHWAYS
STATE OF NORTH CAROLINA

Prepared In the Office of:
ROADSIDE ENVIRONMENTAL UNIT
1 South Wilmington St.
Raleigh, NC 27611
2006 STANDARD SPECIFICATIONS

Roadway Standard Drawings

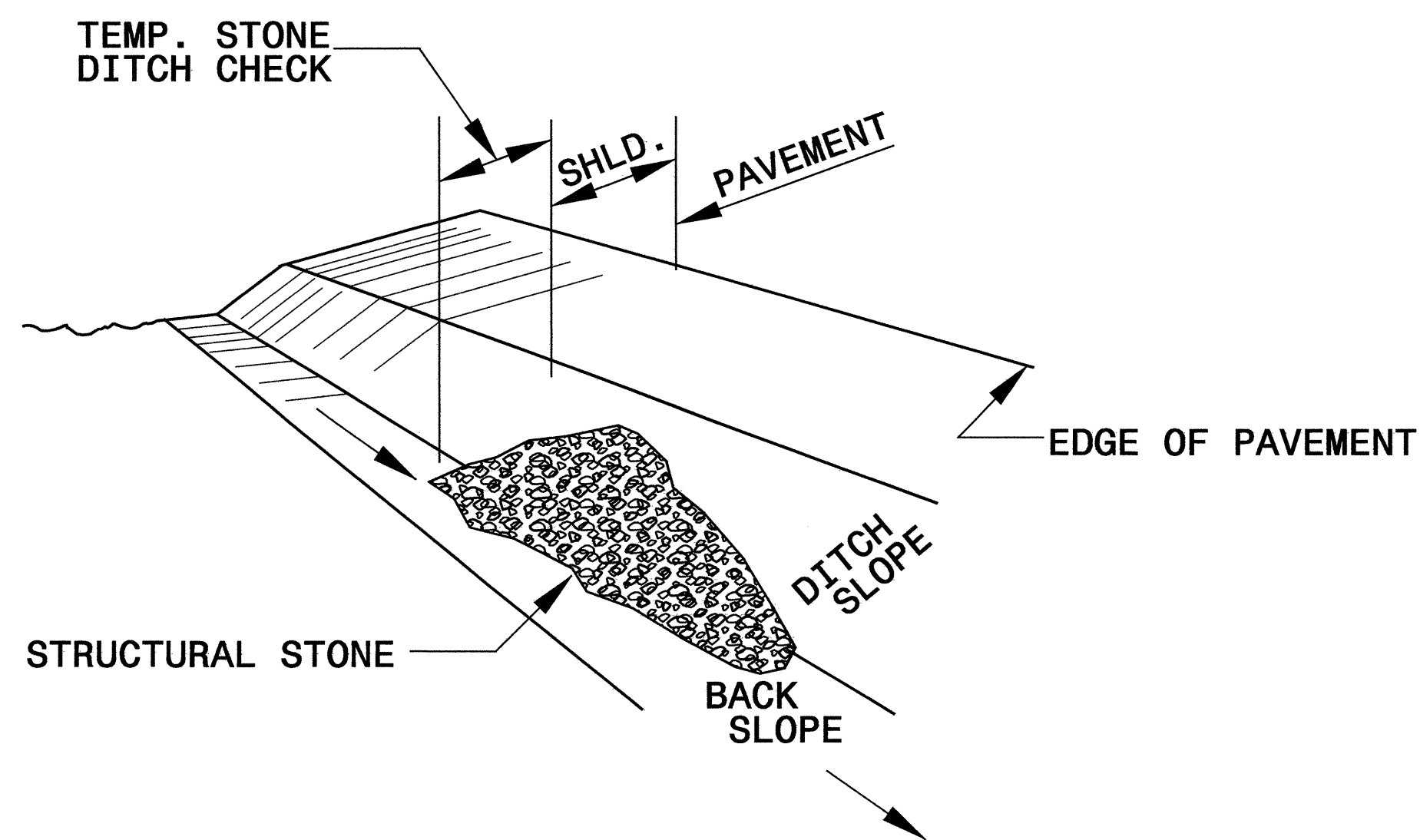
The following roadway english standards as appear in "Roadway Standard Drawings"- Roadway Design Unit - N. C. Department of Transportation - Raleigh, N. C., dated July 18, 2006 and the latest revision thereto are applicable to this project and by reference hereby are considered a part of these plans.

1605.01 Temporary Silt Fence	1632.03 Rock Inlet Sediment Trap Type C
1607.01 Gravel Construction Entrance	1633.01 Temporary Rock Silt Check Type A
1622.01 Temporary Berms and Slope Drains	1634.02 Temporary Rock Sediment Dam Type B
	1635.02 Rock Pipe Inlet Sediment Trap Type B

28-APB-2006 1319
\\tipprojec01-6\4215\env\2006\p1\design\4215-rdj-sh-ec.dgn
John P. H. REV 2/24/06

PROJECT REFERENCE NO. B-4215	SHEET NO. EC-2
RW SHEET NO.	
ROADWAY DESIGN ENGINEER	HYDRAULICS ENGINEER

TEMPORARY ROCK SILT CHECK TYPE 'B' DETAIL

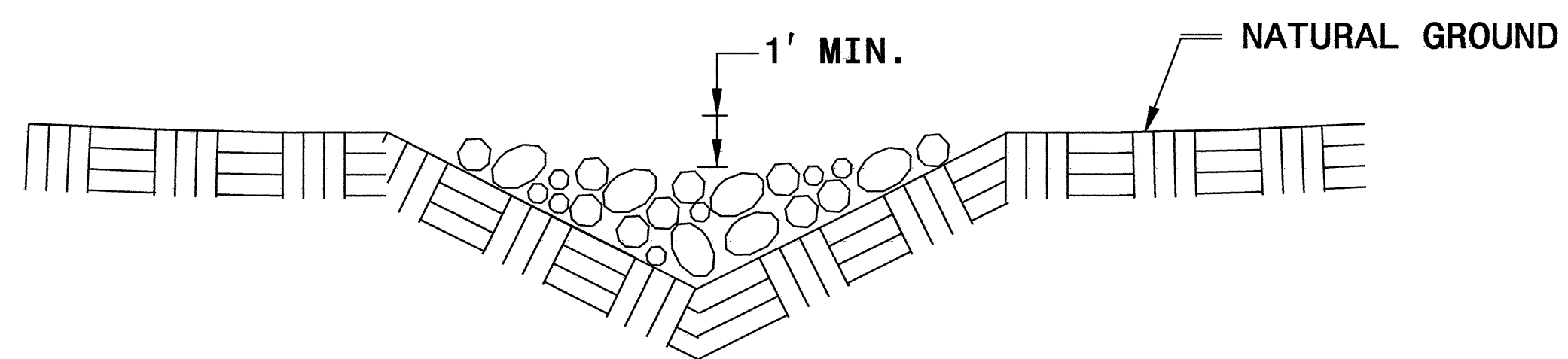


ISOMETRIC VIEW

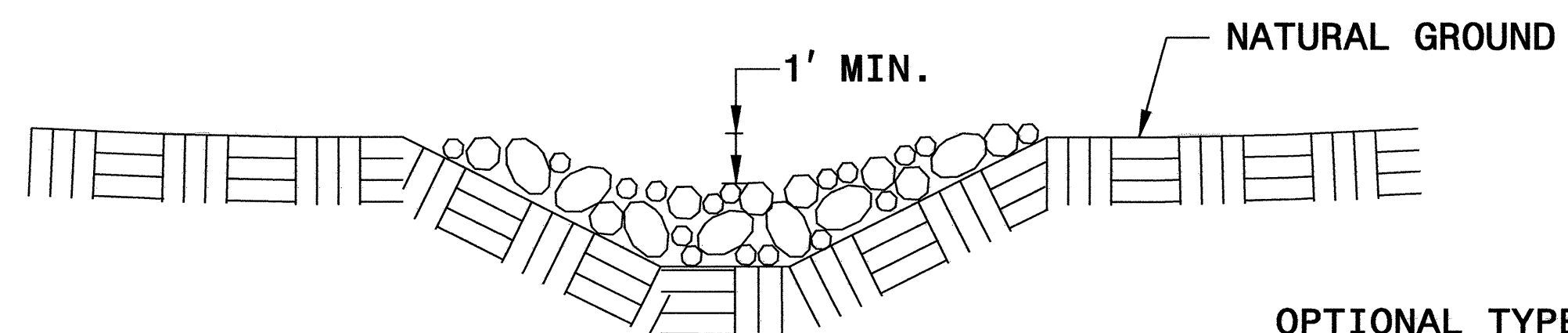
NOTES:

USE CLASS 'B' EROSION CONTROL STONE FOR STRUCTURAL STONE.

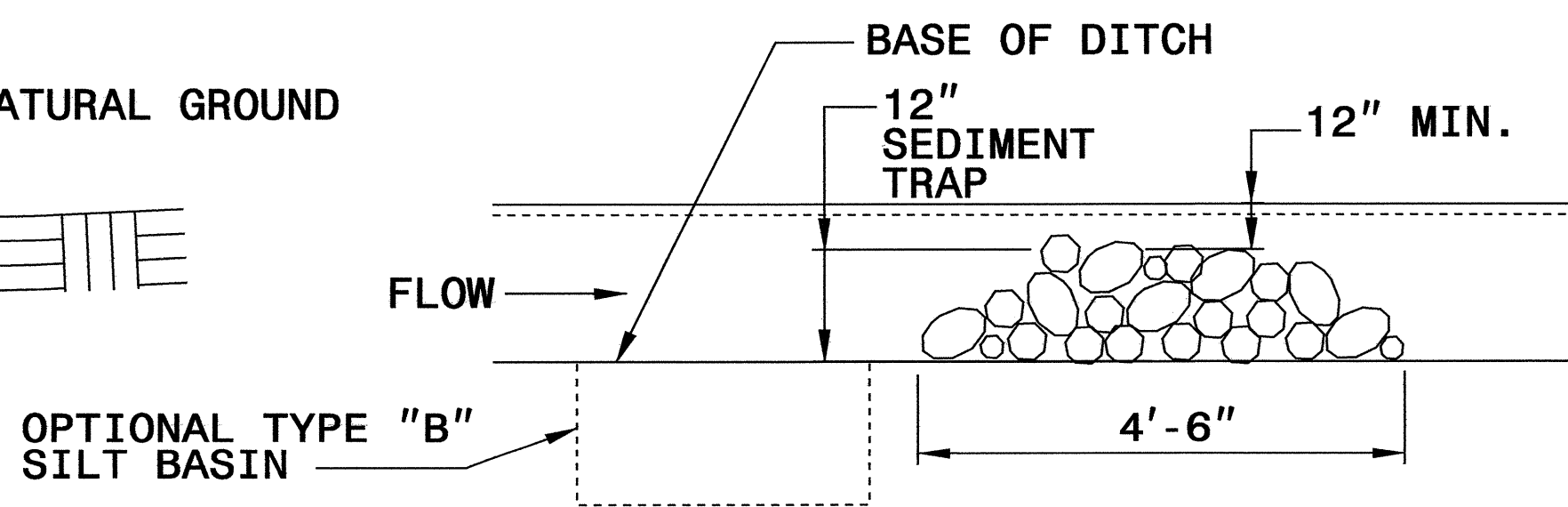
THE ENGINEER MAY DIRECT THE OPTION OF CLASS "A" STONE FOR SITES HAVING LESS THAN ONE (1) ACRE DRAINAGE AREA AND A DITCH GRADE LESS THAN 3%.



CROSS SECTION VEE DITCH



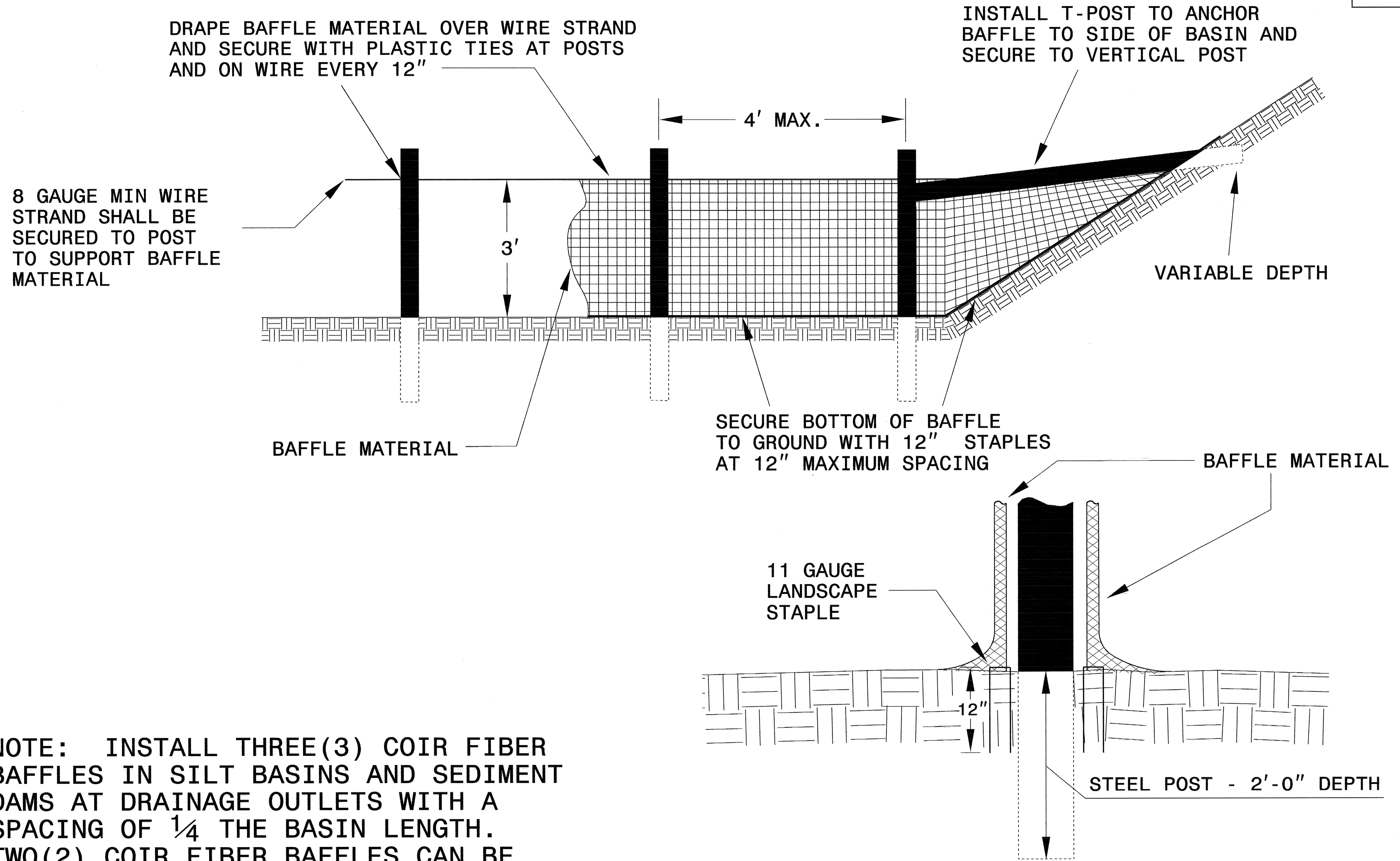
CROSS SECTION TRAPEZOIDAL DITCH



ELEVATION VIEW

PROJECT REFERENCE NO. B-4215	SHEET NO. EC-2A
RW SHEET NO.	
ROADWAY DESIGN ENGINEER	HYDRAULICS ENGINEER

COIR FIBER BAFFLE DETAIL



NOTE: INSTALL THREE (3) COIR FIBER BAFFLES IN SILT BASINS AND SEDIMENT DAMS AT DRAINAGE OUTLETS WITH A SPACING OF $\frac{1}{4}$ THE BASIN LENGTH. TWO (2) COIR FIBER BAFFLES CAN BE INSTALLED IN SILT BASINS AND DAMS LESS THAN 20 FT. IN LENGTH WITH A SPACING OF $\frac{1}{3}$ THE BASIN LENGTH.

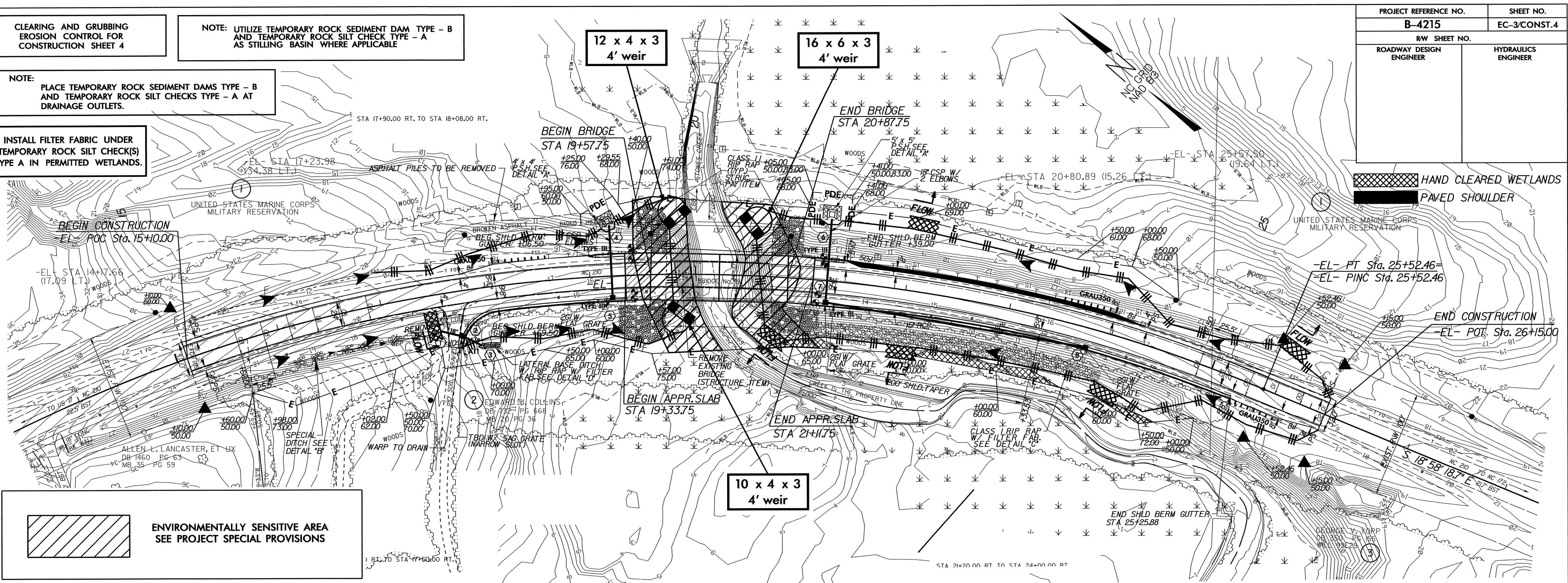
BAFFLE MATERIAL SHALL BE SECURED TO THE BOTTOM AND SIDES OF BASIN USING 12" LANDSCAPE STAPLES

CLEARING AND GRUBBING EROSION CONTROL FOR CONSTRUCTION SHEET 4

NOTE: UTILIZE TEMPORARY ROCK SEDIMENT DAM TYPE - B AND TEMPORARY ROCK SILT CHECK TYPE - A AS STILLING BASIN WHERE APPLICABLE

NOTE: PLACE TEMPORARY ROCK SEDIMENT DAMS TYPE - B AND TEMPORARY ROCK SILT CHECKS TYPE - A AT DRAINAGE OUTLETS.

INSTALL FILTER FABRIC UNDER TEMPORARY ROCK SILT CHECK(S) TYPE A IN PERMITTED WETLANDS.



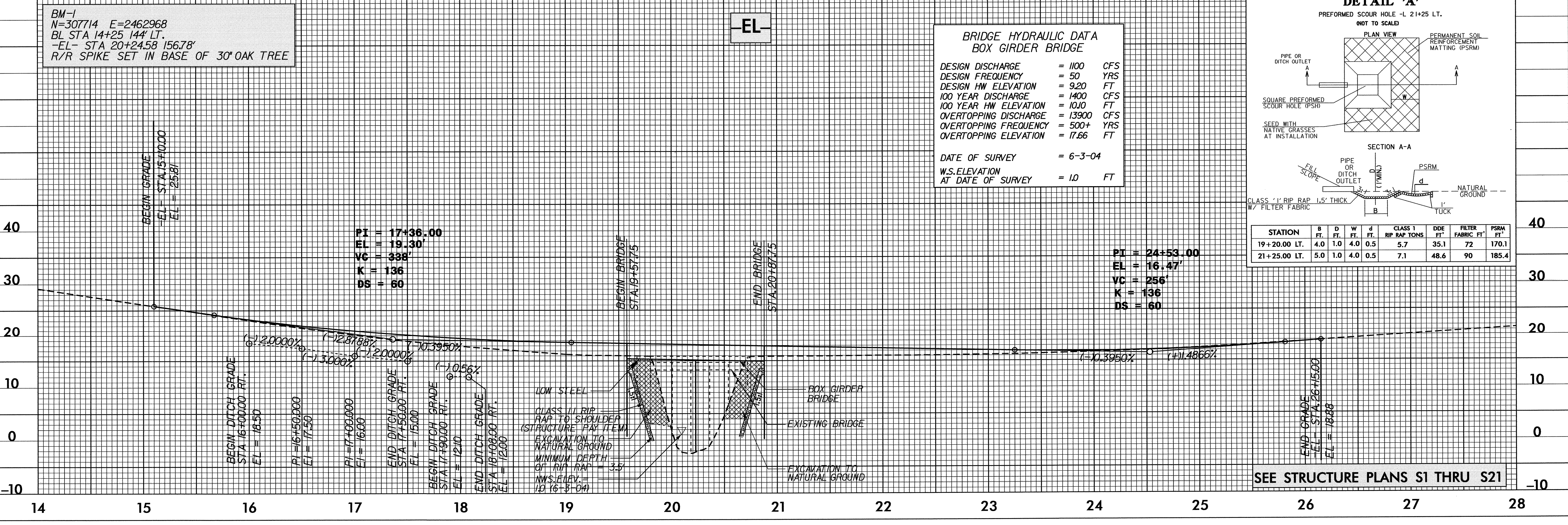
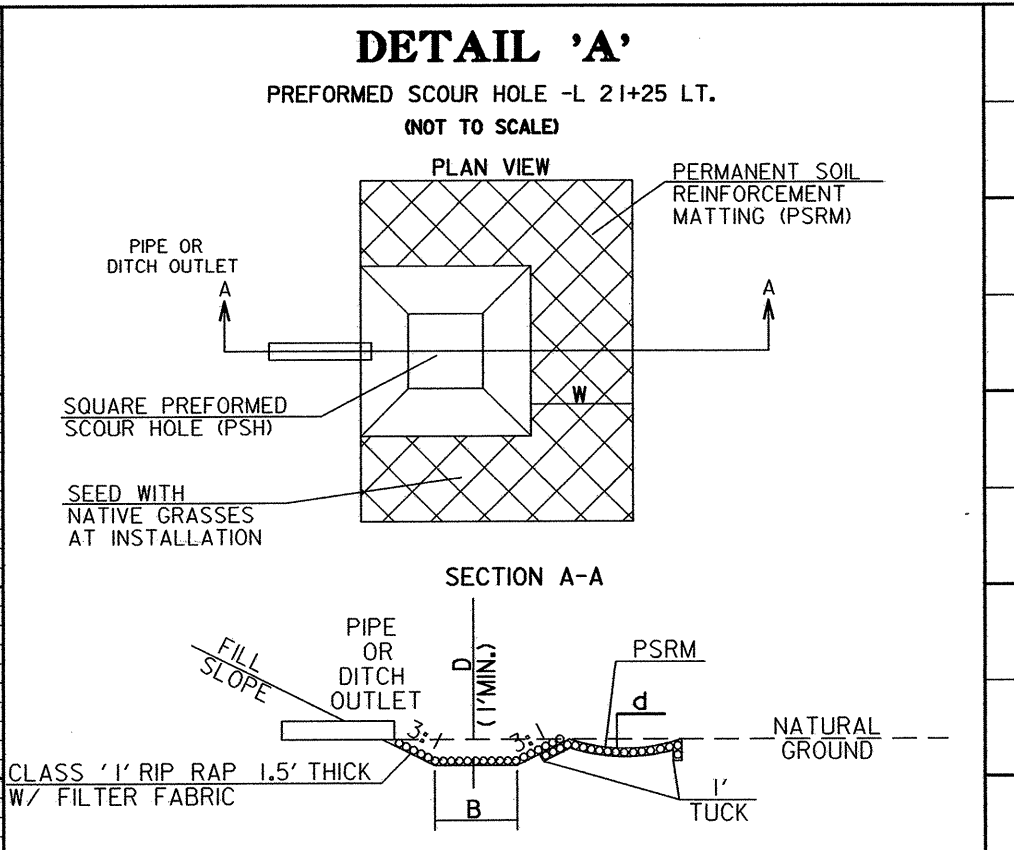
ENVIRONMENTALLY SENSITIVE AREA SEE PROJECT SPECIAL PROVISIONS

BM-1
N=307714 E=2462968
BL STA 14+25 144' LT.
-EL- STA 20+24.58 156.78'
R/R SPIKE SET IN BASE OF 30" OAK TREE

-EL-

**BRIDGE HYDRAULIC DATA
BOX GIRDER BRIDGE**

DESIGN DISCHARGE	= 1100	CFS
DESIGN FREQUENCY	= 50	YRS
DESIGN HW ELEVATION	= 9.20	FT
100 YEAR DISCHARGE	= 1400	CFS
100 YEAR HW ELEVATION	= 10.10	FT
OVERTOPPING DISCHARGE	= 13900	CFS
OVERTOPPING FREQUENCY	= 500+	YRS
OVERTOPPING ELEVATION	= 17.66	FT
DATE OF SURVEY	= 6-3-04	
W.S. ELEVATION AT DATE OF SURVEY	= 10	FT



STATION	B	D	W	d	CLASS 1 RIP RAP TONS	DDE FT'	FILTER FABRIC FT'	PSRM FT'
19+20.00 LT.	4.0	1.0	4.0	0.5	5.7	35.1	72	170.1
21+25.00 LT.	5.0	1.0	4.0	0.5	7.1	48.6	90	185.4

SEE STRUCTURE PLANS S1 THRU S21

8/17/99

REVISIONS

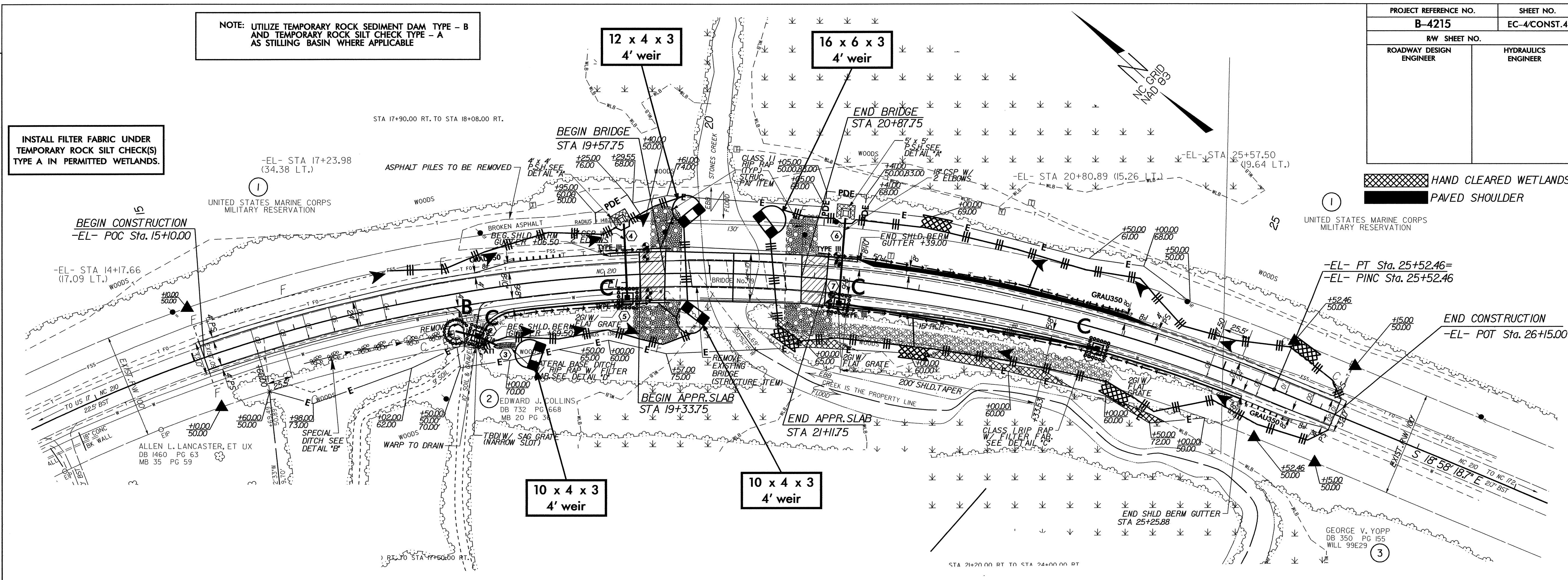
DATE PLOTTED

8/17/99

NOTE: UTILIZE TEMPORARY ROCK SEDIMENT DAM TYPE - B AND TEMPORARY ROCK SILT CHECK TYPE - A AS STILLING BASIN WHERE APPLICABLE

INSTALL FILTER FABRIC UNDER TEMPORARY ROCK SILT CHECK(S) TYPE A IN PERMITTED WETLANDS.

PROJECT REFERENCE NO.	SHEET NO.
B-4215	EC-4/CONST.4
RW SHEET NO.	
ROADWAY DESIGN ENGINEER	HYDRAULICS ENGINEER



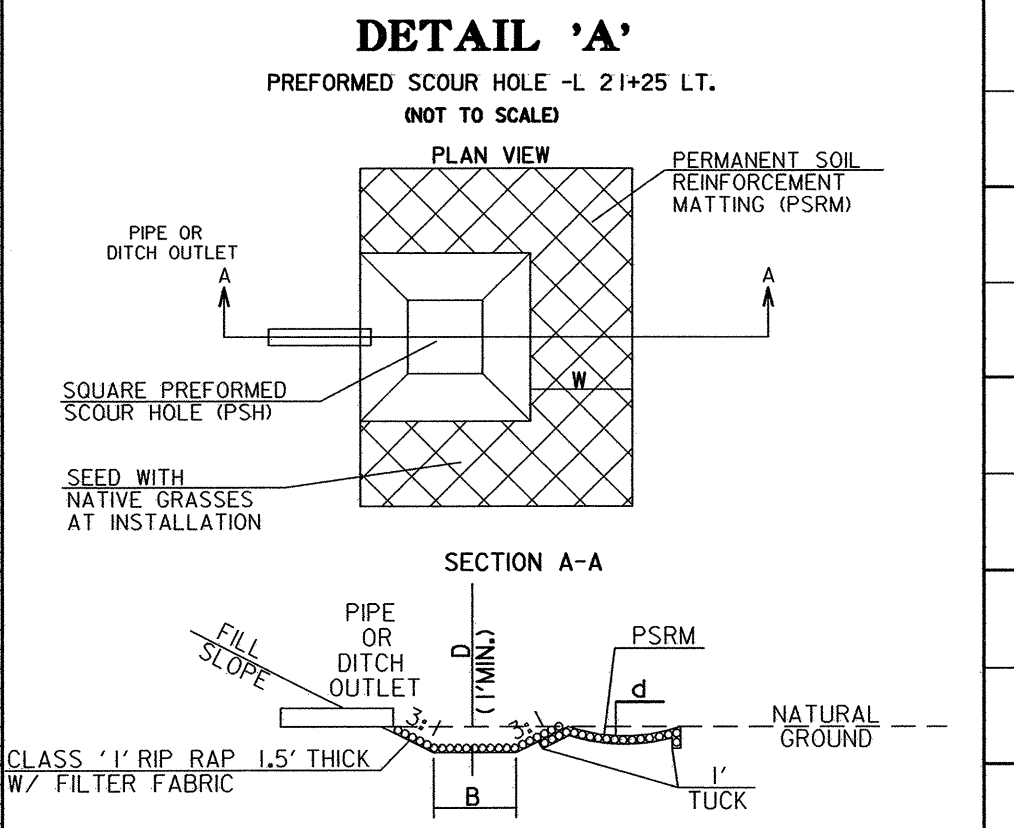
REVISIONS

BM-1
 N=307714 E=2462968
 BL STA 14+25 144' LT.
 -EL- STA 20+24.58 156.78'
 R/R SPIKE SET IN BASE OF 30" OAK TREE

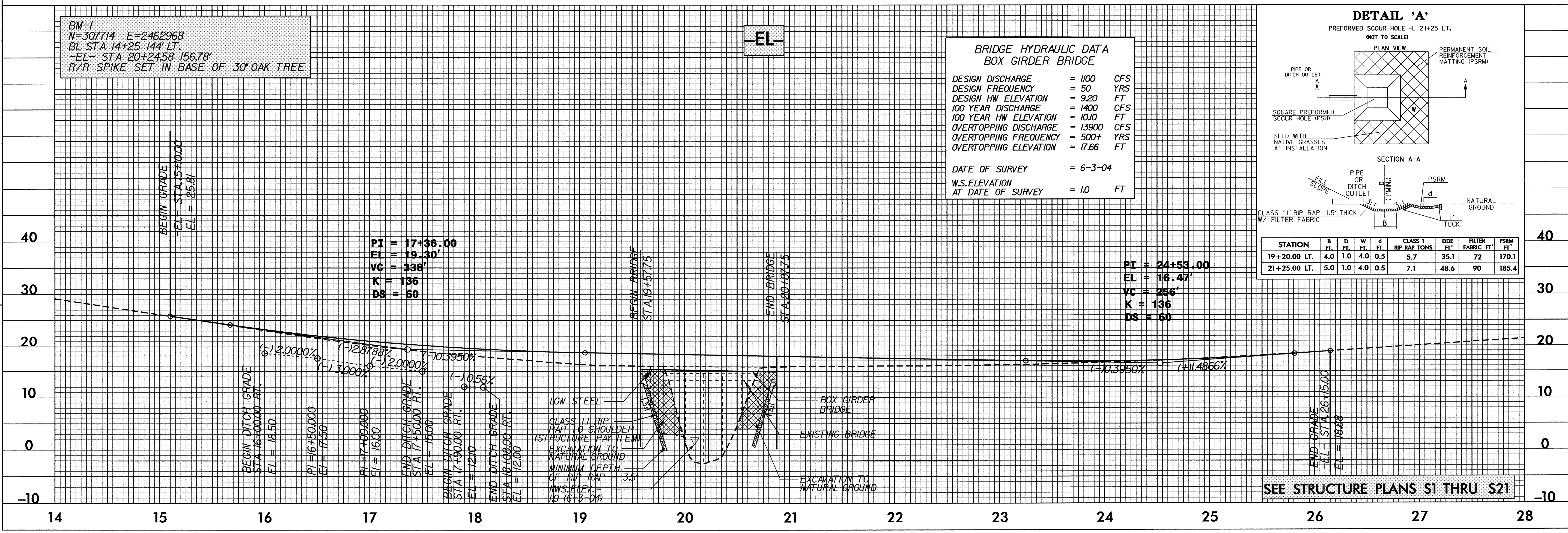
-EL-

**BRIDGE HYDRAULIC DATA
BOX GIRDER BRIDGE**

DESIGN DISCHARGE	= 1100	CFS
DESIGN FREQUENCY	= 50	YRS
DESIGN HW ELEVATION	= 9.20	FT
100 YEAR DISCHARGE	= 1400	CFS
100 YEAR HW ELEVATION	= 10.10	FT
OVERTOPPING DISCHARGE	= 13900	CFS
OVERTOPPING FREQUENCY	= 500+	YRS
OVERTOPPING ELEVATION	= 17.66	FT
DATE OF SURVEY	= 6-3-04	
W.S. ELEVATION AT DATE OF SURVEY	= 10	FT



STATION	B FT.	D FT.	W FT.	d FT.	CLASS 1 RIP RAP TONS	DDE FT.	FILTER FABRIC FT.	PSRM FT.
19+20.00 LT.	4.0	1.0	4.0	0.5	5.7	35.1	72	170.1
21+25.00 LT.	5.0	1.0	4.0	0.5	7.1	48.6	90	185.4



SEE STRUCTURE PLANS S1 THRU S21