

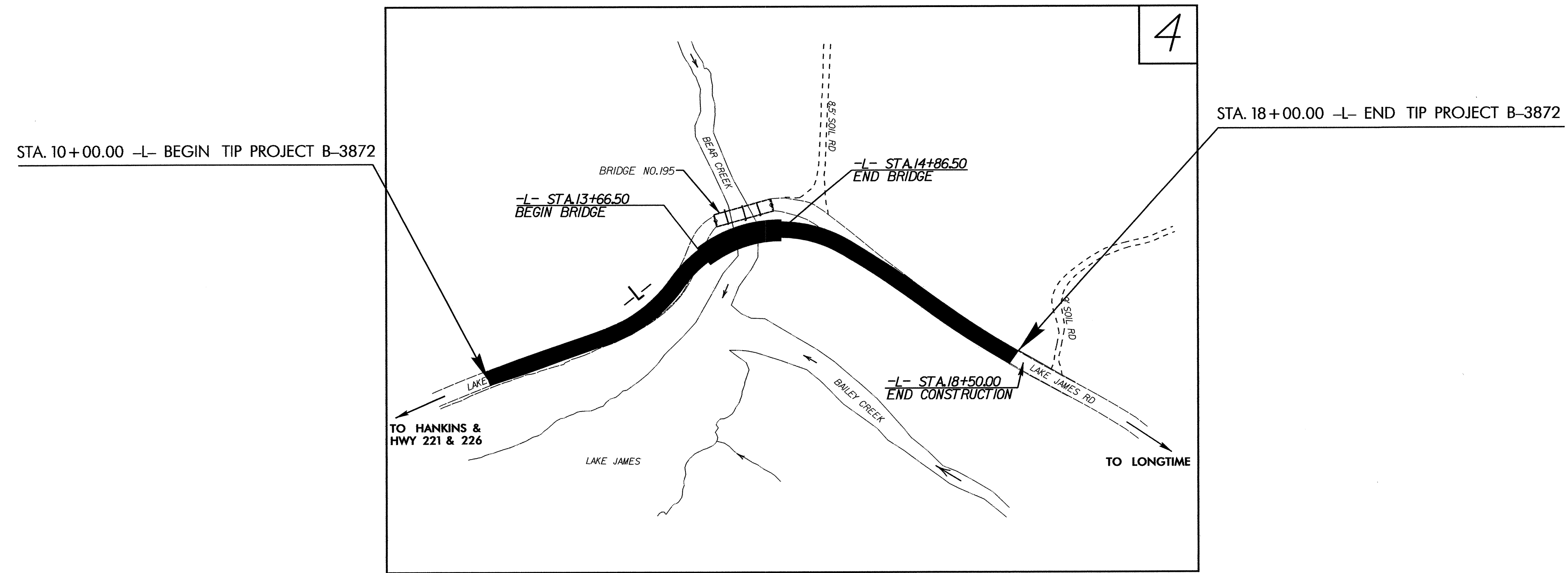
**TIP PROJECT: B-3872**

STATE OF NORTH CAROLINA  
DIVISION OF HIGHWAYS  
PLAN FOR PROPOSED  
HIGHWAY EROSION CONTROL

**McDOWELL COUNTY**

LOCATION: BRIDGE NO. 195 ON SR 1552  
OVER BEAR CREEK

TYPE OF WORK: GRADING, DRAINAGE, PAVING,  
AND STRUCTURE



| STATE           | STATE PROJECT REFERENCE NO. | SHEET NO.   | TOTAL SHEETS |
|-----------------|-----------------------------|-------------|--------------|
| N.C.            | B-3872                      | EC-1        |              |
| STATE PROJ. NO. | F.A. PROJ. NO.              | DESCRIPTION |              |
|                 |                             |             |              |
|                 |                             |             |              |
|                 |                             |             |              |
|                 |                             |             |              |
|                 |                             |             |              |

**EROSION AND SEDIMENT CONTROL MEASURES**

| Std. #  | Description                               | Symbol |
|---------|---|--------|
|         | Streambank Reforestation.....             |        |
| 1630.05 | Temporary Silt Ditch.....                 |        |
| 1630.05 | Temporary Diversion.....                  |        |
| 1605.01 | Temporary Silt Fence.....                 |        |
| 1606.01 | Special Sediment Control Fence.....       |        |
| 1622.01 | Temporary Berms and Slope Drains.....     |        |
| 1630.01 | Riser Basin.....                          |        |
| 1630.02 | Silt Basin Type B.....                    |        |
| 1633.01 | Temporary Rock Silt Check Type-A.....     |        |
|         | Temporary Rock Silt Check Type-B.....     |        |
| 1634.01 | Temporary Rock Sediment Dam Type-A.....   |        |
| 1634.02 | Temporary Rock Sediment Dam Type-B.....   |        |
| 1635.01 | Rock Pipe Inlet Sediment Trap Type-A..... |        |
| 1635.02 | Rock Pipe Inlet Sediment Trap Type-B..... |        |
| 1636.01 | Rock Silt Screen.....                     |        |
| 1630.04 | Stilling Basin.....                       |        |
|         | Rock Inlet Sediment Trap:                 |        |
| 1632.01 | Type A.....                               |        |
| 1632.02 | Type B.....                               |        |
| 1632.03 | Type C.....                               |        |

THIS PROJECT CONTAINS  
EROSION CONTROL PLANS  
FOR CLEARING AND  
GRUBBING PHASE OF  
CONSTRUCTION.

THIS PROJECT HAS  
BEEN DESIGNED TO  
SENSITIVE WATERSHED  
STANDARDS.

ENVIRONMENTALLY  
SENSITIVE AREA(S) EXIST  
ON THIS PROJECT

Refer To E. C. Special Provisions  
for Special Considerations.

**GRAPHIC SCALE**

0

PLANS

0

PROFILE (HORIZONTAL)

0

PROFILE (VERTICAL)

ROADSIDE ENVIRONMENTAL UNIT  
DIVISION OF HIGHWAYS  
STATE OF NORTH CAROLINA

Prepared In the Office of:  
**ROADSIDE ENVIRONMENTAL UNIT**  
1 South Wilmington St.  
Raleigh, NC 27611

2006 STANDARD SPECIFICATIONS

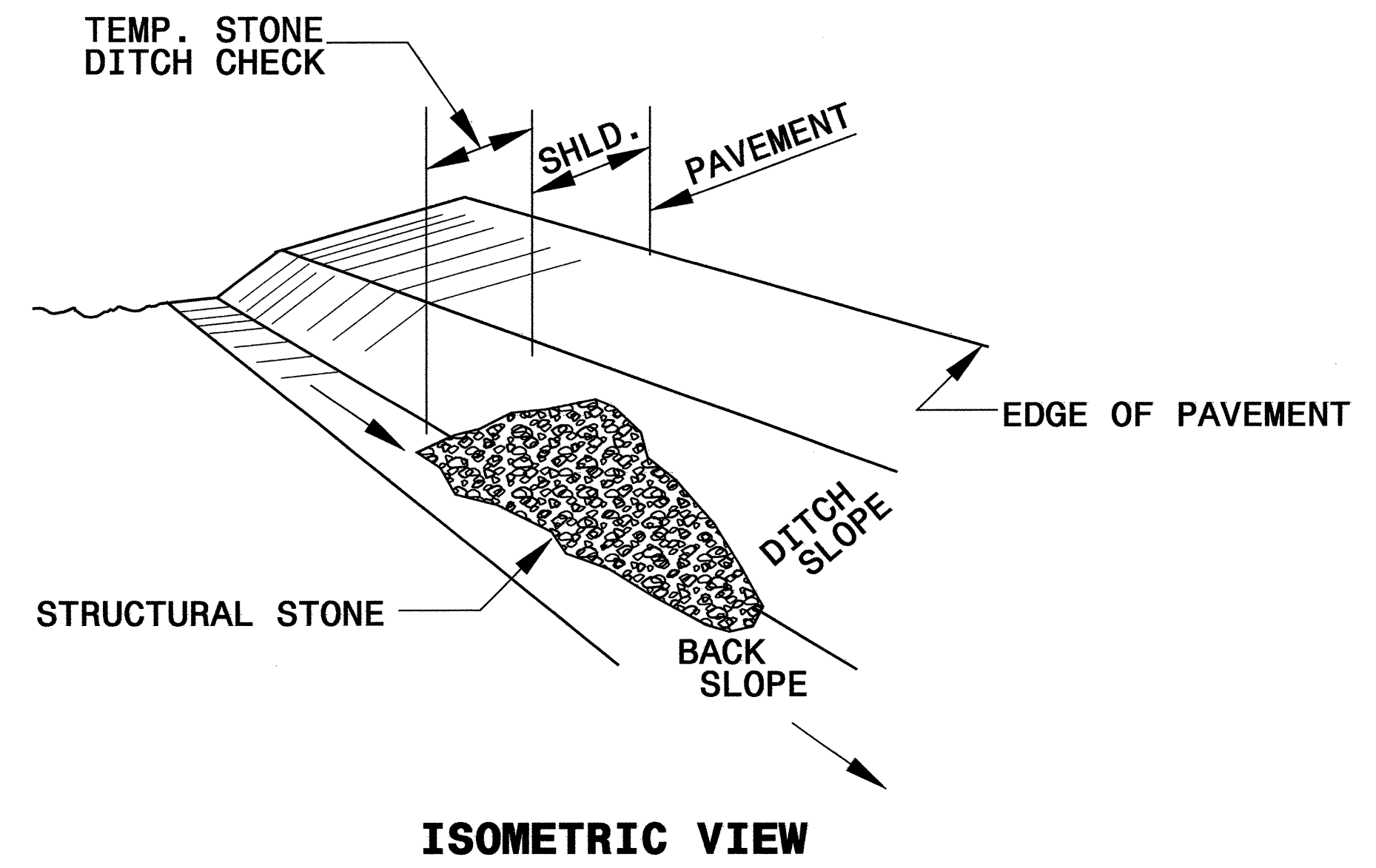
Roadway Standard Drawings

The following roadway english standards as appear in "Roadway Standard Drawings"- Roadway Design Unit - N. C. Department of Transportation - Raleigh, N. C., dated July 18, 2006 and the latest revision thereto are applicable to this project and by reference hereby are considered a part of these plans.

|  |  |
|--|--|
| 1605.01 Temporary Silt Fence             | 1632.01 Rock Inlet Sediment Trap Type A    |
| 1607.01 Gravel Construction Entrance     | 1632.03 Rock Inlet Sediment Trap Type C    |
| 1622.01 Temporary Berms and Slope Drains | 1633.01 Temporary Rock Silt Check Type A   |
| 1630.02 Silt Basin Type B                | 1633.02 Temporary Rock Silt Check Type B   |
| 1630.06 Special Stilling Basin           | 1634.02 Temporary Rock Sediment Dam Type B |

|  |                          |
|--|--------------------------|
| PROJECT REFERENCE NO.<br><i>B-3872</i> | SHEET NO.<br><i>EC-2</i> |
| RW SHEET NO.                           |                          |
| ROADWAY DESIGN ENGINEER                | HYDRAULICS ENGINEER      |

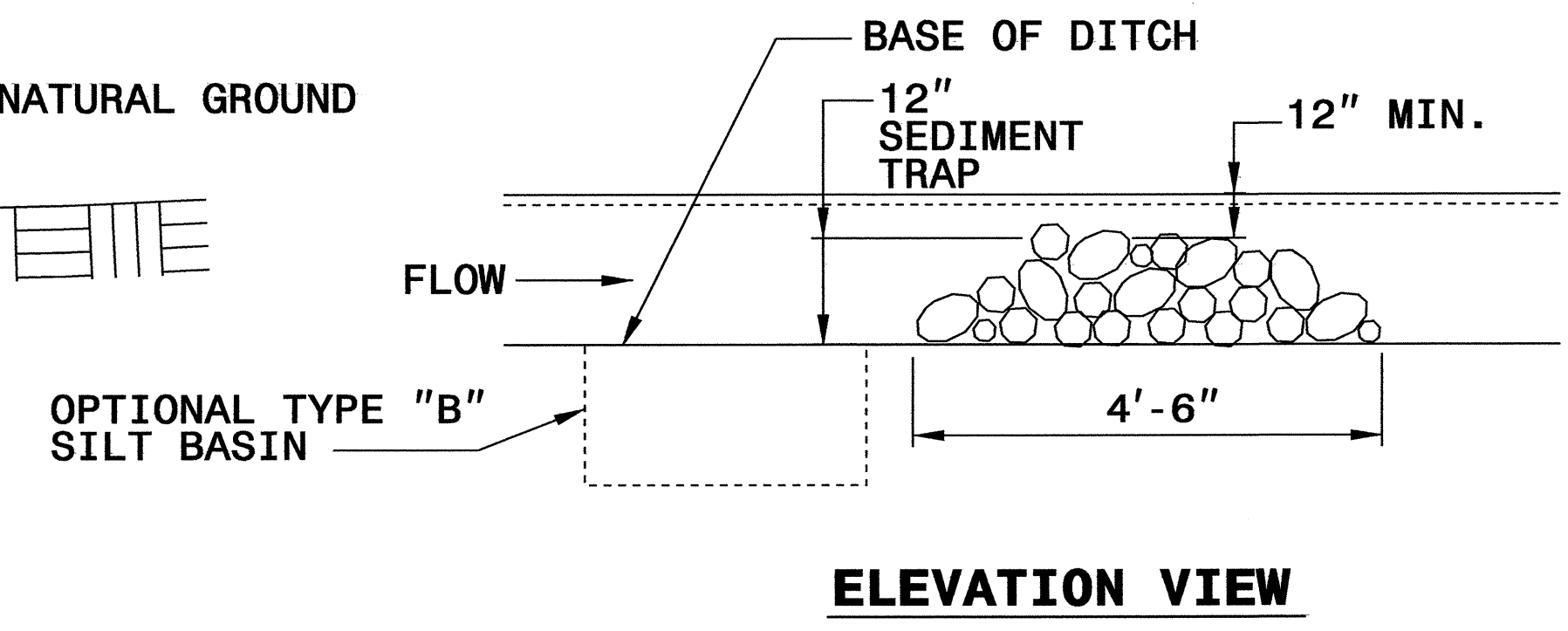
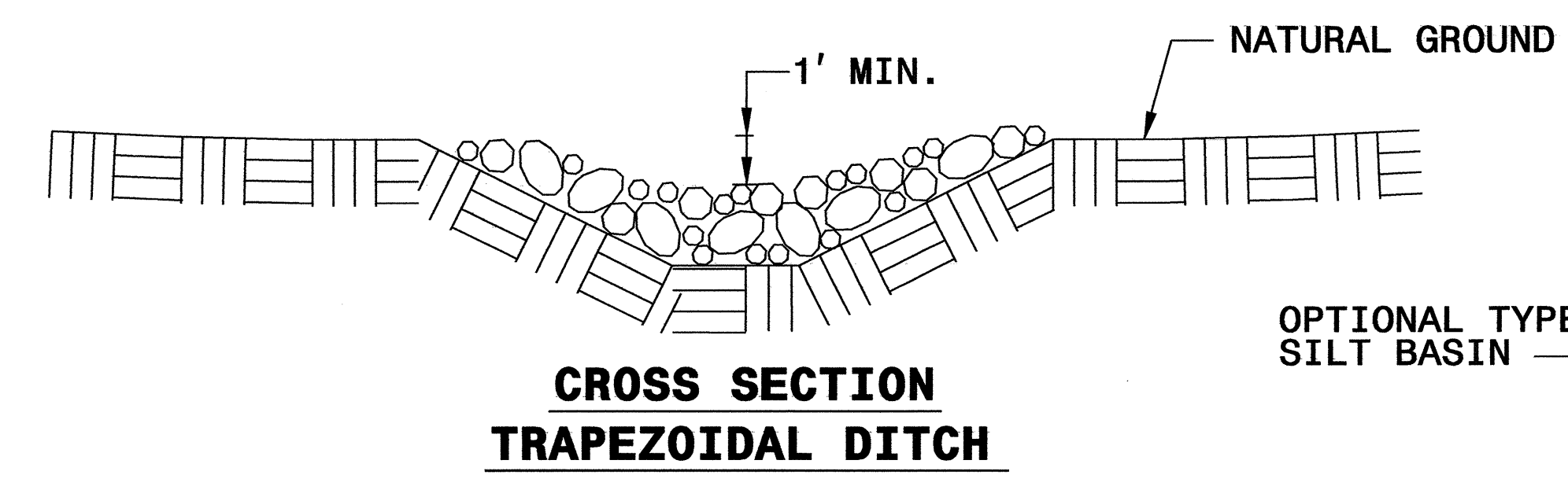
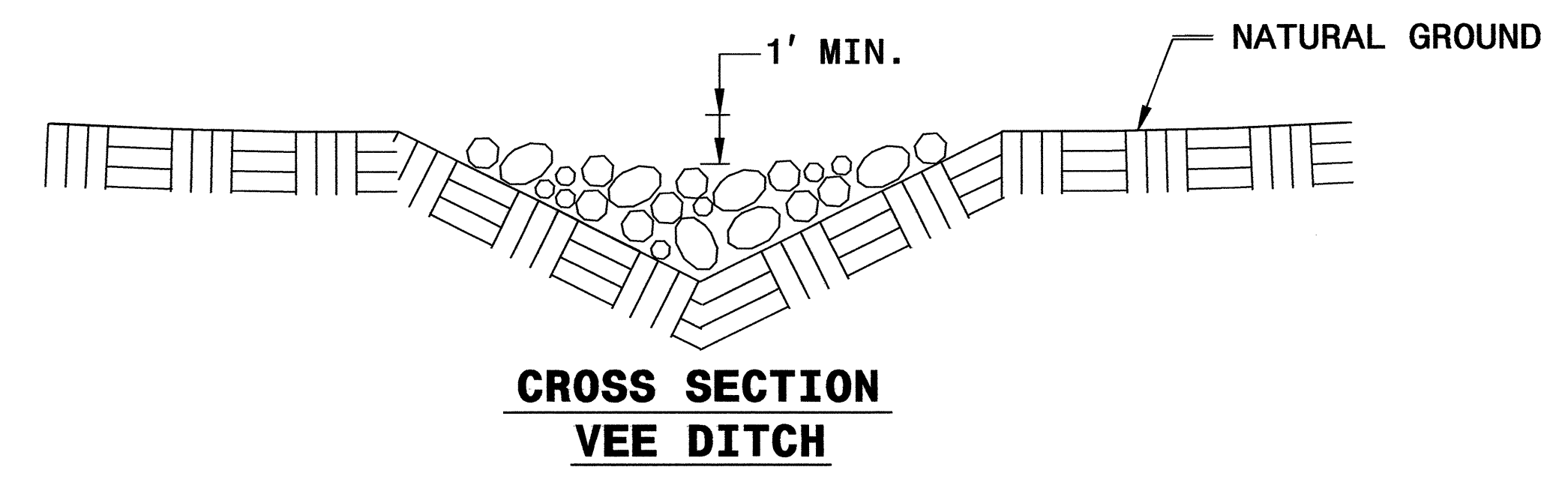
# TEMPORARY ROCK SILT CHECK TYPE 'B' DETAIL



**NOTES:**

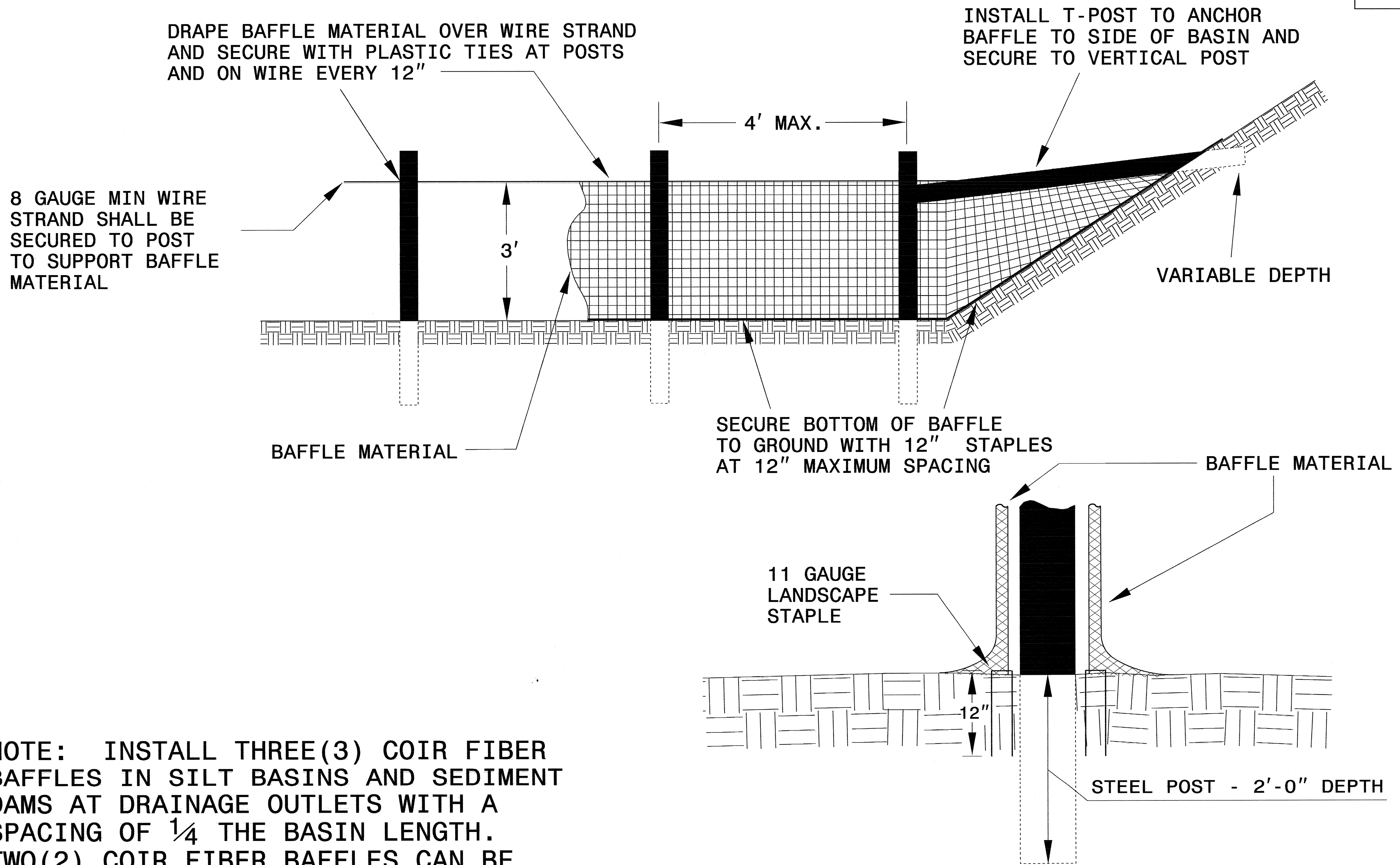
USE CLASS 'B' EROSION CONTROL STONE FOR STRUCTURAL STONE.

THE ENGINEER MAY DIRECT THE OPTION OF CLASS "A" STONE FOR SITES HAVING LESS THAN ONE (1) ACRE DRAINAGE AREA AND A DITCH GRADE LESS THAN 3%.



|                                 |                     |
|---------------------------------|---------------------|
| PROJECT REFERENCE NO.<br>B-3872 | SHEET NO.<br>EC-2A  |
| RW SHEET NO.                    |                     |
| ROADWAY DESIGN ENGINEER         | HYDRAULICS ENGINEER |

# COIR FIBER BAFFLE DETAIL



NOTE: INSTALL THREE (3) COIR FIBER BAFFLES IN SILT BASINS AND SEDIMENT DAMS AT DRAINAGE OUTLETS WITH A SPACING OF  $\frac{1}{4}$  THE BASIN LENGTH. TWO (2) COIR FIBER BAFFLES CAN BE INSTALLED IN SILT BASINS AND DAMS LESS THAN 20 FT. IN LENGTH WITH A SPACING OF  $\frac{1}{3}$  THE BASIN LENGTH.

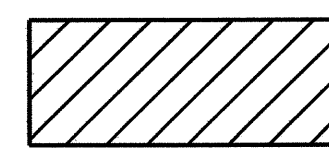
BAFFLE MATERIAL SHALL BE SECURED TO THE BOTTOM AND SIDES OF BASIN USING 12" LANDSCAPE STAPLES







NOTE: UTILIZE SPECIAL STILLING BASIN, AND TEMPORARY ROCK SEDIMENT DAM TYPE - B AS STILLING BASIN, WHERE APPLICABLE.

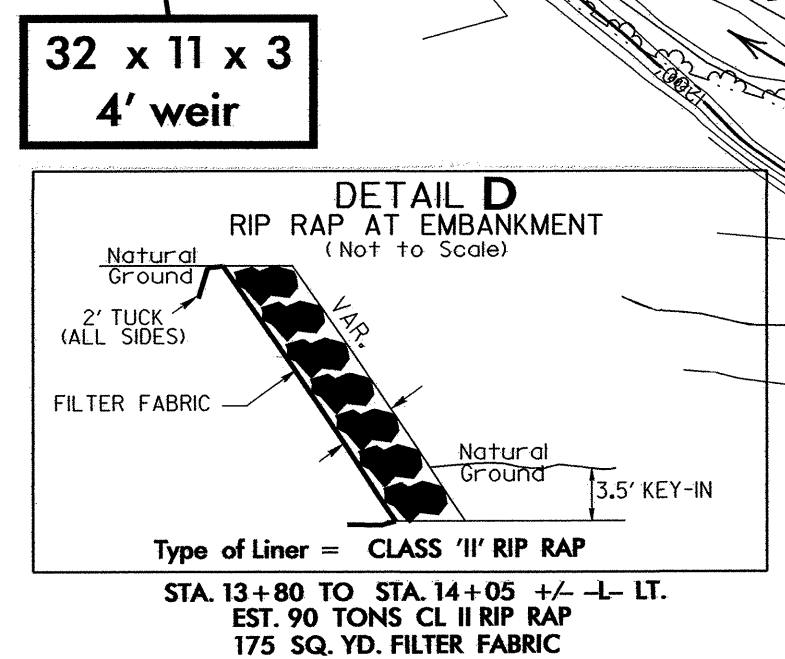
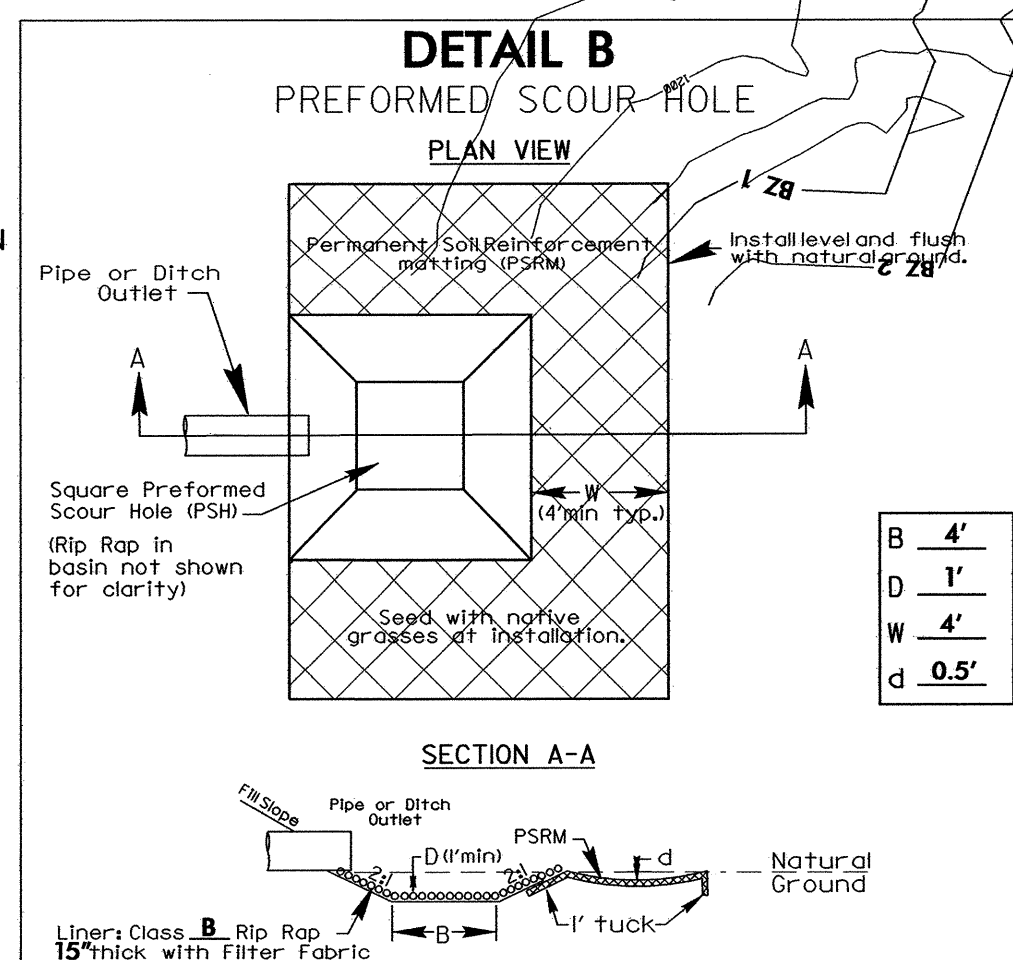
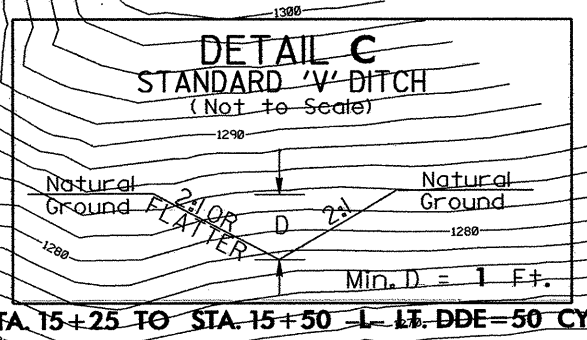
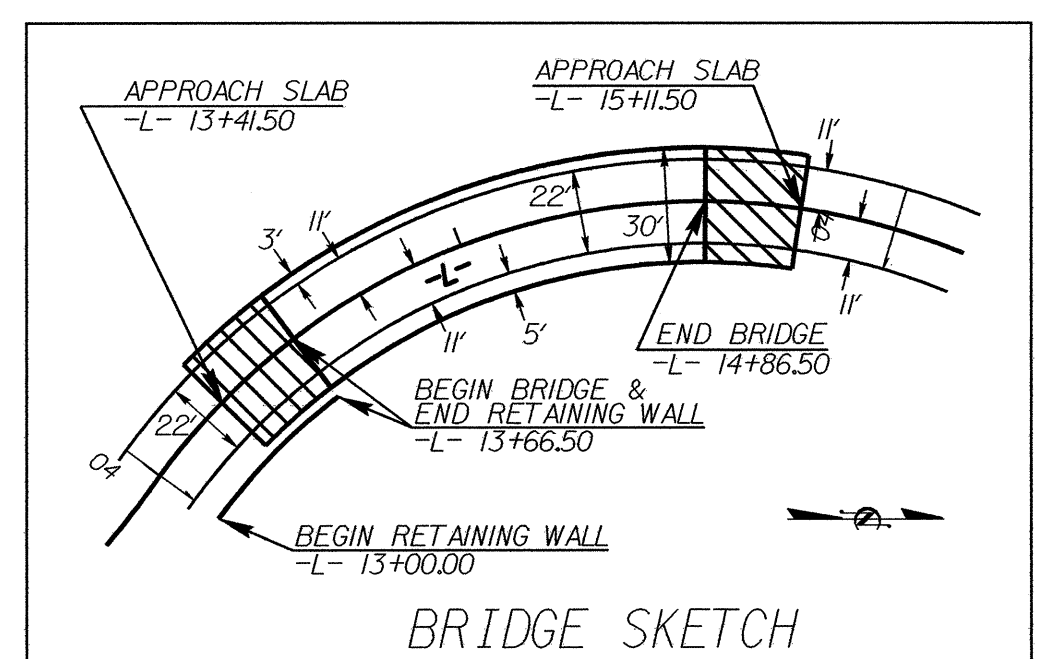
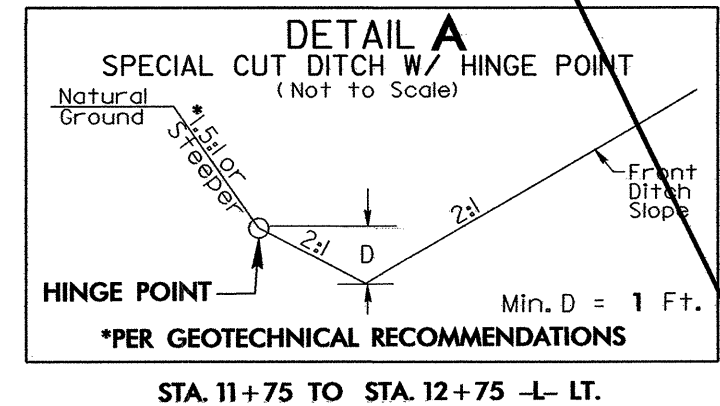
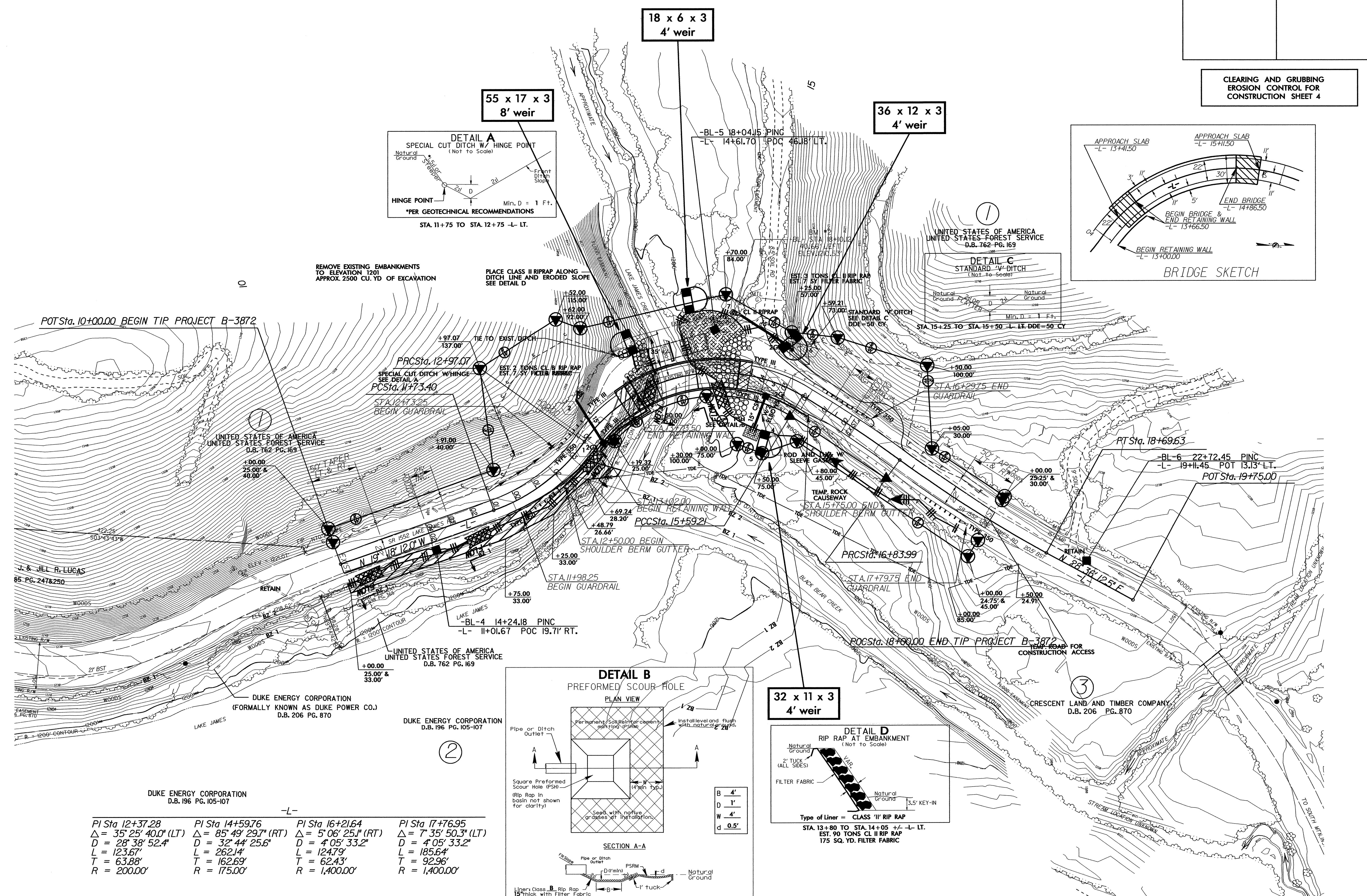


ENVIRONMENTALLY SENSITIVE AREA  
SEE PROJECT SPECIAL PROVISIONS

NOTE: PLACE TEMPORARY ROCK SEDIMENT DAMS TYPE - B AND TEMPORARY ROCK SILT CHECKS TYPE - A AT DRAINAGE OUTLETS.

|                                 |                           |
|---------------------------------|---------------------------|
| PROJECT REFERENCE NO.<br>B-3872 | SHEET NO.<br>EC-4/CONST.4 |
| RW SHEET NO.                    |                           |
| ROADWAY DESIGN ENGINEER         | HYDRAULICS ENGINEER       |

CLEARING AND GRUBBING  
EROSION CONTROL FOR  
CONSTRUCTION SHEET 4



| DUKE ENERGY CORPORATION<br>D.B. 196 PG. 105-107 |                               |                              |                              |
|---|-------------------------------|------------------------------|------------------------------|
| -L-   |                               |                              |                              |
| PI Sta 12+37.28                                 | PI Sta 14+59.76               | PI Sta 16+21.64              | PI Sta 17+76.95              |
| $\Delta = 35' 25" 40.0"$ (LT)                   | $\Delta = 85' 49' 29.7"$ (RT) | $\Delta = 5' 06' 25.1"$ (RT) | $\Delta = 7' 35' 50.3"$ (LT) |
| D = 28' 38" 52.4"                               | D = 32' 44' 25.6"             | D = 4' 05' 33.2"             | D = 4' 05' 33.2"             |
| L = 123.67'                                     | L = 262.14'                   | L = 124.79'                  | L = 185.64'                  |
| T = 63.88'                                      | T = 162.69'                   | T = 62.43'                   | T = 92.96'                   |
| R = 200.00'                                     | R = 175.00'                   | R = 1,400.00'                | R = 1,400.00'                |

POT Sta. 10+00.00 BEGIN TIP PROJECT B-3872

J. & JILL R. LUCAS  
65- PG. 247&250

UNITED STATES OF AMERICA  
UNITED STATES FOREST SERVICE  
D.B. 762 PG. 169

UNITED STATES OF AMERICA  
UNITED STATES FOREST SERVICE  
D.B. 762 PG. 169

DUKE ENERGY CORPORATION  
(FORMALLY KNOWN AS DUKE POWER CO.)  
D.B. 206 PG. 870

DUKE ENERGY CORPORATION  
D.B. 196 PG. 105-107

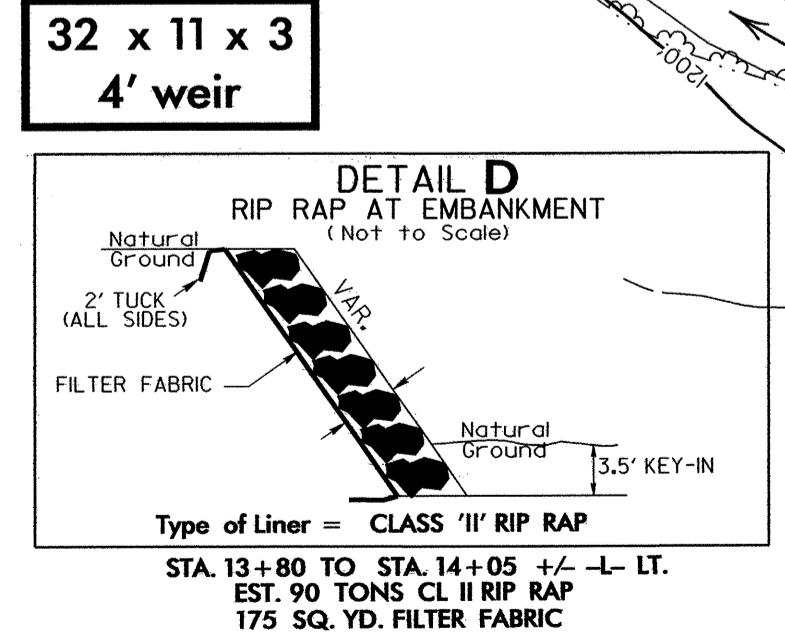
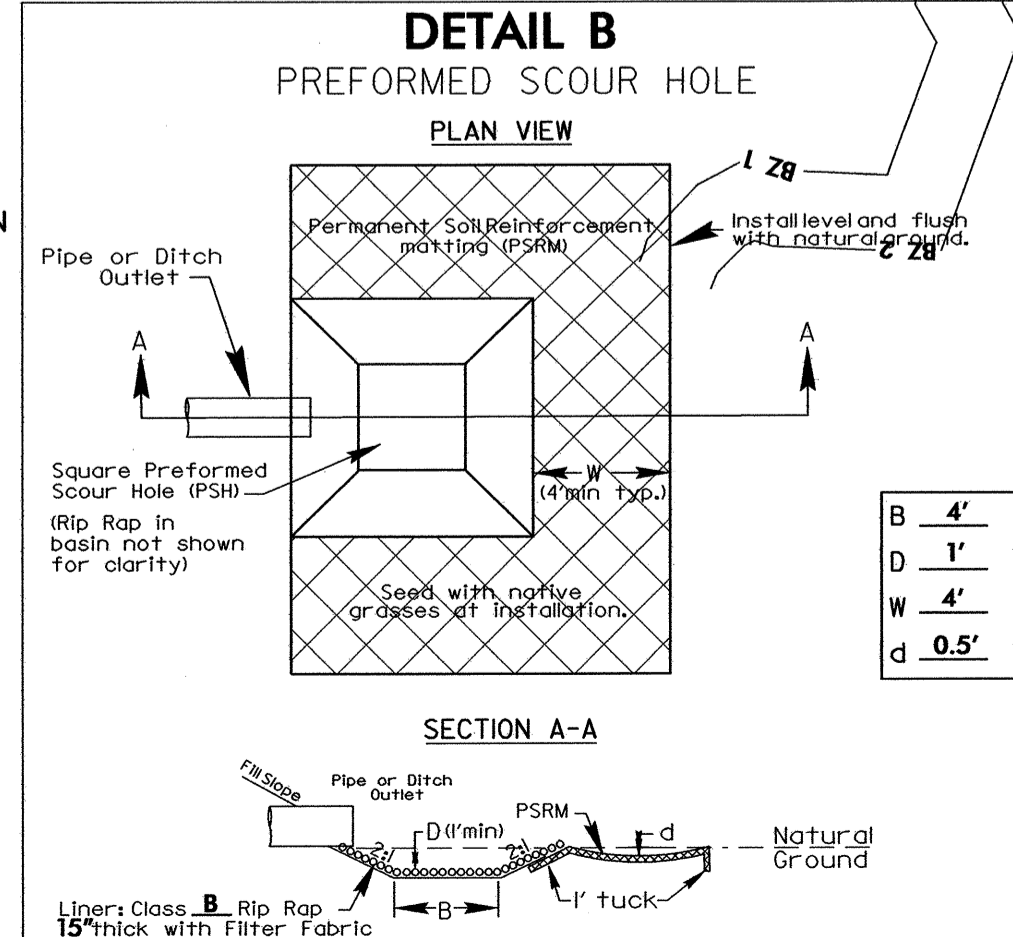
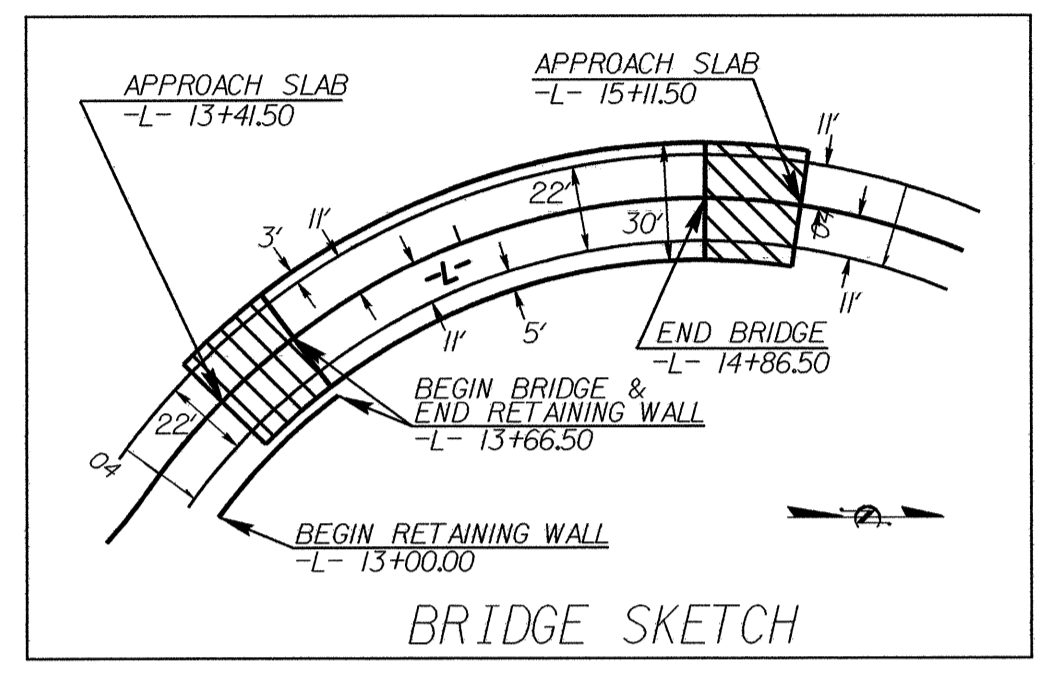
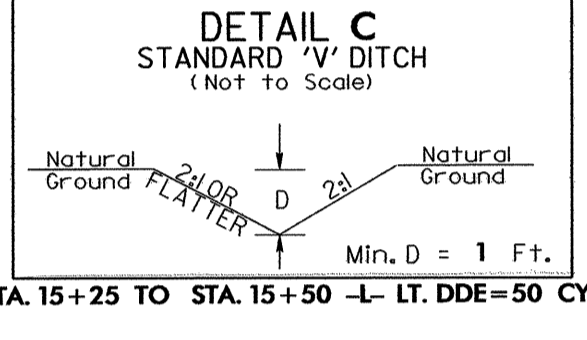
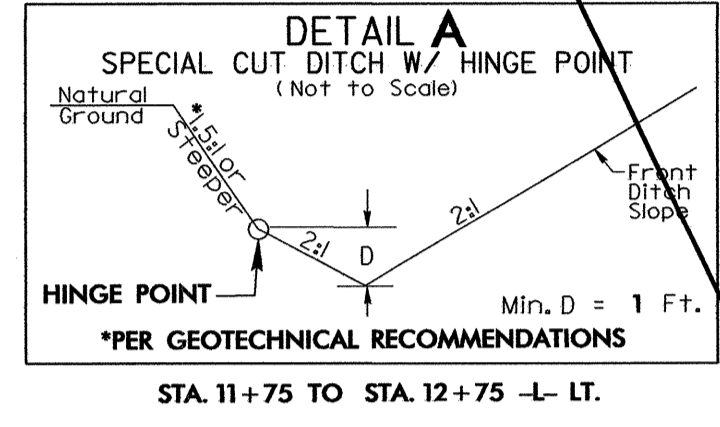
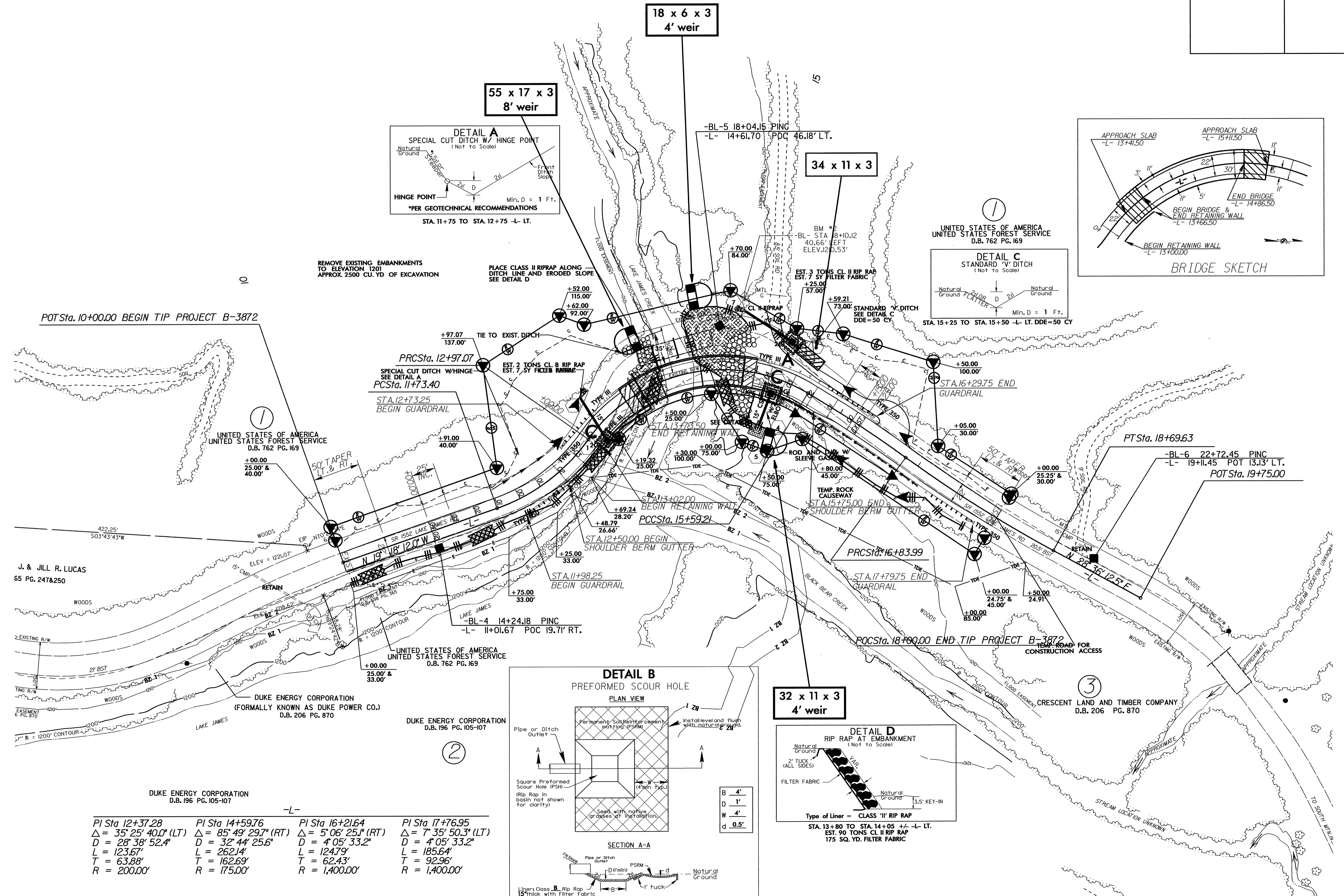
UNITED STATES OF AMERICA  
UNITED STATES FOREST SERVICE  
D.B. 762 PG. 169

CRESCENT LAND AND TIMBER COMPANY  
D.B. 206 PG. 870



NOTE: UTILIZE SPECIAL STILLING BASIN, AND TEMPORARY ROCK SEDIMENT DAM TYPE - B AS STILLING BASIN, WHERE APPLICABLE.

|                         |                     |
|-------------------------|---------------------|
| PROJECT REFERENCE NO.   | SHEET NO.           |
| B-3872                  | EC-5/CONST.4        |
| RW SHEET NO.            |                     |
| ROADWAY DESIGN ENGINEER | HYDRAULICS ENGINEER |



| PI Sta                        | PI Sta                        | PI Sta                       | PI Sta                       |
|-------------------------------|-------------------------------|------------------------------|------------------------------|
| 12+37.28                      | 14+59.76                      | 16+21.64                     | 17+76.95                     |
| $\Delta = 35' 25" 40.0"$ (LT) | $\Delta = 85' 49" 29.7"$ (RT) | $\Delta = 5' 06" 25.1"$ (RT) | $\Delta = 7' 35" 50.3"$ (LT) |
| D = 28' 38" 52.4"             | D = 32' 44" 25.6"             | D = 4' 05" 33.2"             | D = 4' 05" 33.2"             |
| L = 123.67'                   | L = 262.14'                   | L = 124.79'                  | L = 185.64'                  |
| T = 63.88'                    | T = 162.69'                   | T = 62.43'                   | T = 92.96'                   |
| R = 200.00'                   | R = 175.00'                   | R = 1,400.00'                | R = 1,400.00'                |

DUKE ENERGY CORPORATION  
D.B. 196 PG. 105-107

DUKE ENERGY CORPORATION  
D.B. 196 PG. 105-107

DUKE ENERGY CORPORATION  
(FORMALLY KNOWN AS DUKE POWER CO.)  
D.B. 206 PG. 870

UNITED STATES OF AMERICA  
UNITED STATES FOREST SERVICE  
D.B. 762 PG. 169

J. & JILL R. LUCAS  
65 PG. 247&250

CRESCENT LAND AND TIMBER COMPANY  
D.B. 206 PG. 870