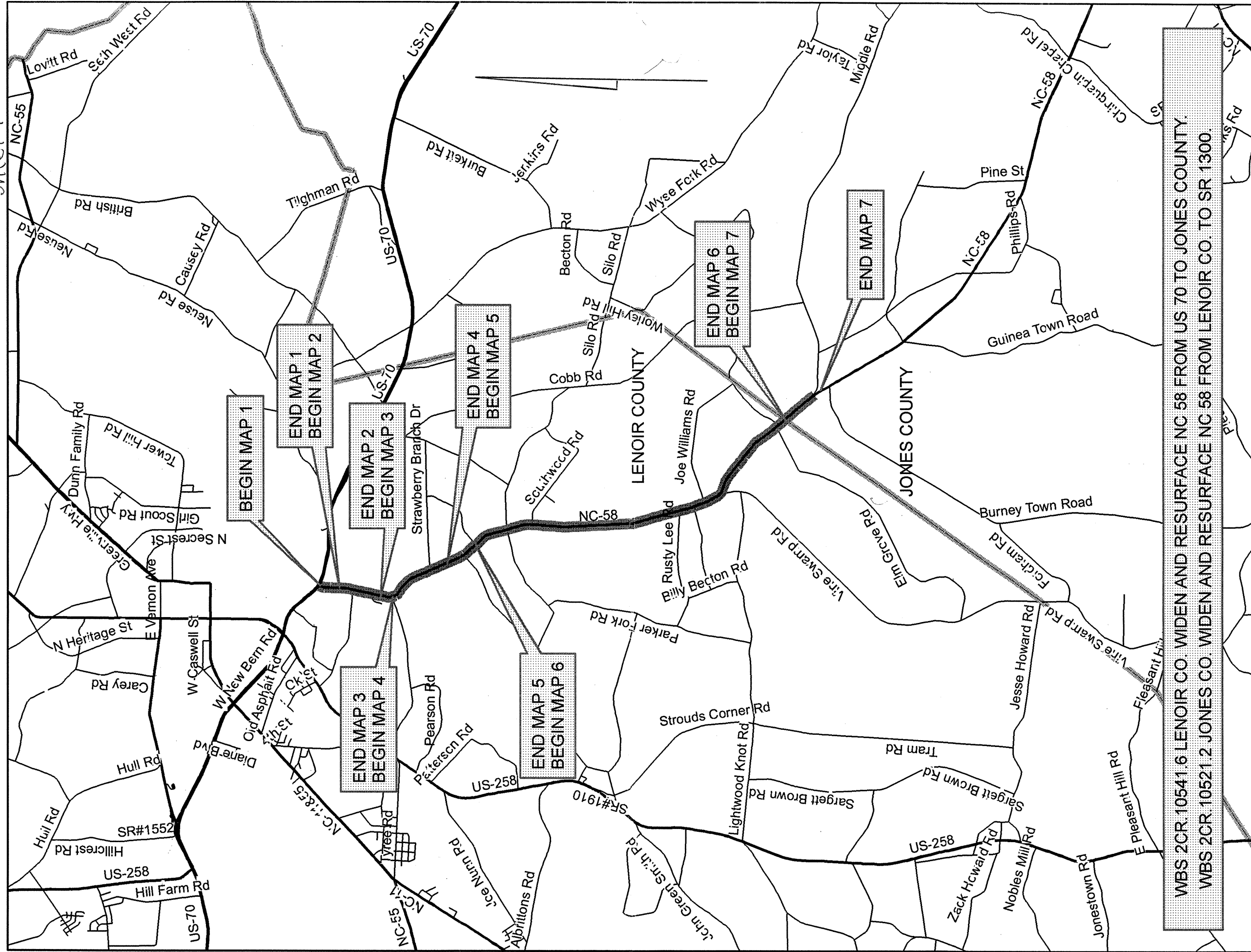


C201642

Sheet 1



PROJECT NO.	SHEET NO.	TOTAL NO.
2CR.10541.6, 2CR.10521.2	3	

SUMMARY OF QUANTITIES

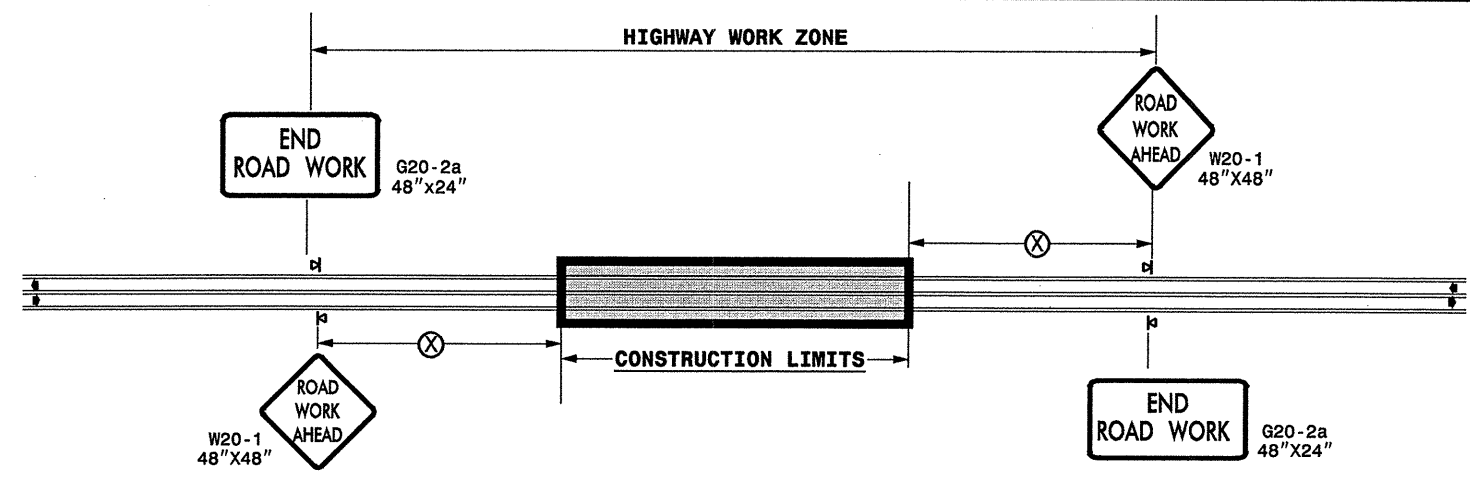
PROJECT NO	COUNTY	MAP NO	ROUTE	DESCRIPTION	TYP NO	LENGTH MI	WIDTH FT	BASE COURSE, B25.0B TONS	INTERMEDIATE COURSE, I19.0B TONS	SURFACE COURSE, S9.5B TONS	PG 64-22 PLANT MIX TONS	ADJ. OF MANHOLES EA	ADJ. OF METER OR VALVE BOX EA
2CR.10541.6	Lenoir	1	NC 58	FROM PAVING JOINT AT US 70 TO TYPICAL #2	1	0.2	28.5			310	19	1	1
		2	NC 58	FROM TYPICAL #2 0.6 MILES TO TYPICAL #3	2	0.6	28	487	383	915	94	1	1
		3	NC 58	FROM TYPICAL #3 TO SR 1342	3	0.2	30			327	20	1	1
		4	NC 58	FROM SR 1342 0.9 MILES TO TYPICAL #4	2	0.9	28	731	574	1,372	141	1	1
		5	NC 58	FROM TYPICAL #4 TO SR 1929	4	0.5	40	406	319	1,088	98	1	1
		6	NC 58	FROM SR 1929 TO COUNTY LINE	2	4.8	28	3899	3060	7,318	751	1	1
TOTAL FOR PROJ NO. 2CR.10541.6						7.2		5523	4336	11,330	1,123	6	6
2CR.10521.2	Jones	7	NC 58	FROM COUNTY LINE TO SR 1300	2	0.5	28	406	319	762	78	1	1
TOTAL FOR PROJ NO. 2CR.10521.2						0.5		406	319	762	78	1	1
GRAND TOTAL						7.7		5929	4655	12,092	1,201	7	7

PROJECT NO.	SHEET NO.	TOTAL NO.
2CR.10541.6, 2CR.10521.2	4	

THERMOPLASTIC AND PAINT QUANTITIES

PROJECT NO	COUNTY	MAP NO	ROUTE	DESCRIPTION	468500000-E	468600000-E		469700000-E	471000000-E	472100000-E	472500000-E	472500000-E
					4" X 90 M WHITE THERMO LF	4" X 120 M YELLOW THERMO LF	4" X 120 M WHITE THERMO LF	8" X 120 M YELLOW THERMO LF	24" X 120 M WHITE THERMO LF	THERMO MSG SCHOOL 120 M EA	THERMO LT ARROW 90 M EA	THERMO RT ARROW 90 M EA
2CR.10541.6	Lenoir	1	NC 58	FROM PAVING JOINT AT US 70 TO TYPICAL #2	2,150	2,150	120	200			4	
		2	NC 58	FROM TYPICAL #2 0.6 MILES TO TYPICAL #3	6,456	3,960			50		1	2
		3	NC 58	FROM TYPICAL #3 TO SR 1342	2,152	2,640	250	200			1	2
		4	NC 58	FROM SR 1342 0.9 MILES TO TYPICAL #4	9,684	5,940						
		5	NC 58	FROM TYPICAL #4 TO SR 1929	5,380		150	200	3,500	12	12	
		6	NC 58	FROM SR 1929 TO COUNTY LINE	51,648	31,680						1
TOTAL FOR PROJ NO. 2CR.10541.6					77,470	46,370	520	600	3,550	12	18	5
						46,890					23	
2CR.10521.2	Jones	7	NC 58	FROM COUNTY LINE TO SR 1300	5,380	3,300						
TOTAL FOR PROJ NO. 2CR.10521.2					5,380	3,300						
						3,300						
GRAND TOTAL					82,850	49,670	520	600	3,550	12	18	5
						50,190					23	

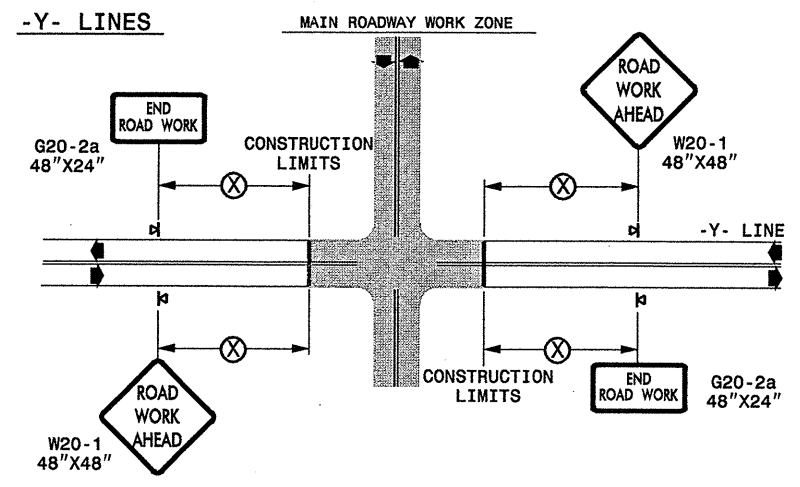
TWO-WAY UNDIVIDED ** (L-LINES)



POSTED SPEED LIMIT (M.P.H.)	RECOMMENDED MINIMUM SIGN SPACING
≤ 50	500'
≥ 55	1000'

STATE OF NORTH CAROLINA
DEPT. OF TRANSPORTATION
DIVISION OF HIGHWAYS
RALEIGH, N.C.

ROADWAYS INTERSECTING ALONG 2 WAY UNDIVIDED WORK ZONE (Y-LINES)



GENERAL NOTES

- USE FLUORESCENT ORANGE SHEETING (TYPE VII OR HIGHER) ON ALL ADVANCED WORK ZONE SIGNS.
- DO NOT INSTALL ADVANCE WARNING SIGNS MORE THAN 3 DAYS PRIOR TO BEGINNING OF WORK.
- ALL SIGN SPACING DIMENSIONS ARE APPROXIMATE, FIELD ADJUST AS NECESSARY OR AS DIRECTED.
- USE PORTABLE WORK ZONE SIGNS ONLY WITH PORTABLE WORK ZONE SIGN STANDS SPECIFICALLY DESIGNED FOR ONE ANOTHER. PORTABLE WORK ZONE SIGNS MAY BE ROLL UP OR APPROVED COMPOSITE.
- PROVIDE PORTABLE WORK ZONE SIGN STANDS, PORTABLE SIGNS AND SIGN SHEETING WHICH ARE LISTED ON THE NORTH CAROLINA DEPARTMENT OF TRANSPORTATION'S APPROVED PRODUCT LIST OR ACCEPTED AS TRAFFIC QUALIFIED BY THE TRAFFIC CONTROL UNIT.
- ** TWO-WAY UNDIVIDED ADVANCE WARNING SIGN CONFIGURATION MAY BE USED ON URBAN MULTI-LANE FACILITIES WHERE CONDITIONS LIMIT THE USE OF DUAL MOUNTED SIGNS AS DETERMINED BY THE ENGINEER.

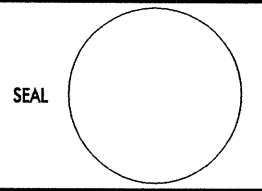
LEGEND

◀ PORTABLE SIGN

◀ DIRECTION OF TRAFFIC FLOW

DETAIL DRAWING
FOR TWO-WAY UNDIVIDED
WORK ZONE WARNING SIGNS

SHEET 1 OF 1

APPROVED: _____	DATE: _____	DETAIL DRAWING FOR TWO-WAY UNDIVIDED ADVANCED WORK ZONE WARNING SIGNS	
			
SCALE: NONE	REVISIONS	7-98	10/01
DATE:	10-98	03/04	
DWG. BY:	01/01	11/04	
DESIGN BY:			
REVIEWED BY:			

25-JUN-2007 13:24
 \\DOT\DFSROOT\GROUPS-WZ\TCCC\desig\ngroup4\resur\facimg\2006\div02\2cr105212etc2wayundivurbfrwys\july2006.dgn
 AT WZTC206427
 pseymer