

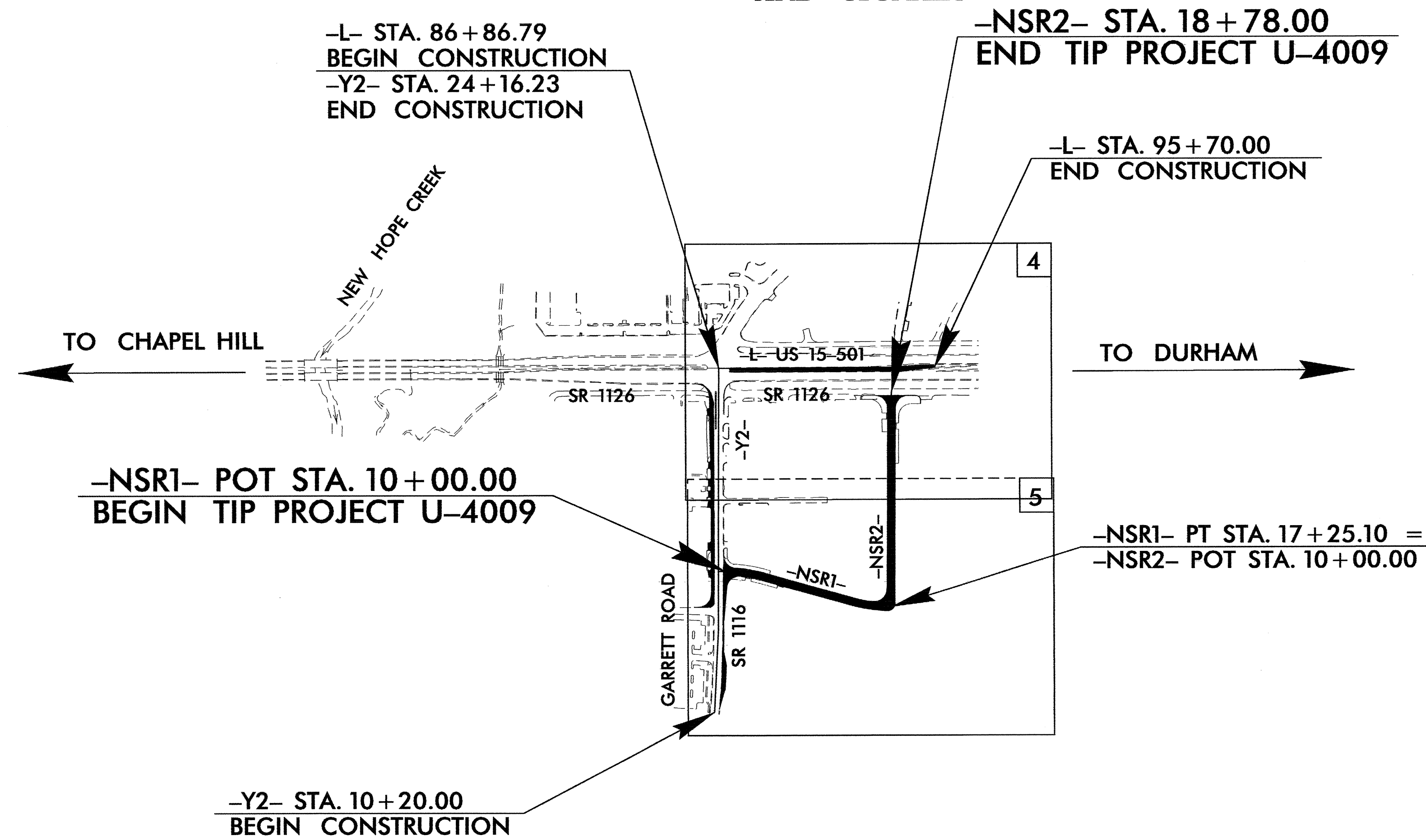
**TIP PROJECT: U-4009**

STATE OF NORTH CAROLINA  
DIVISION OF HIGHWAYS  
  
PLAN FOR PROPOSED  
HIGHWAY EROSION CONTROL

**DURHAM COUNTY**

**LOCATION: SR 1126 (SERVICE ROAD) NEAR THE US 15/501 AND  
SR 1116 (GARRETT ROAD) INTERSECTION**

**TYPE OF WORK: GRADING, DRAINAGE, PAVING, SIGNING,  
AND SIGNALS**

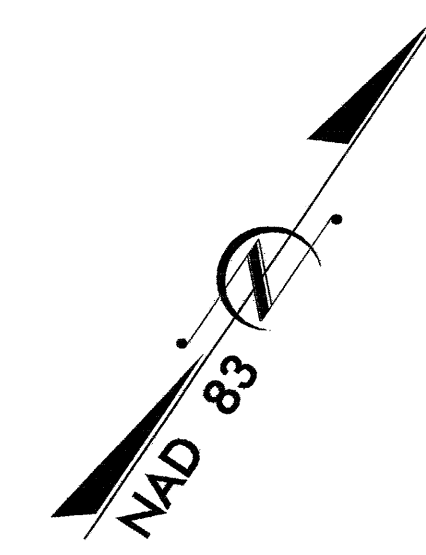


STATE	STATE PROJECT REFERENCE NO.	SHEET NO.	TOTAL SHEETS
N.C.	U-4009	EC-1	
STATE PROJ. NO.	F.A. PROJ. NO.	DESCRIPTION	

**EROSION AND SEDIMENT CONTROL MEASURES**

Std. #	Description	Symbol
1630.03	Streambank Reforestation	
1630.05	Temporary Silt Ditch	
1605.01	Temporary Diversion	
1605.01	Temporary Silt Fence	
1606.01	Special Sediment Control Fence	
1622.01	Temporary Berms and Slope Drains	
1630.01	Riser Basin	
1630.02	Silt Basin Type B	
1633.01	Temporary Rock Silt Check Type-A	
1633.01	Temporary Rock Silt Check Type-B	
1634.01	Temporary Rock Sediment Dam Type-A	
1634.02	Temporary Rock Sediment Dam Type-B	
1635.01	Rock Pipe Inlet Sediment Trap Type-A	
1635.02	Rock Pipe Inlet Sediment Trap Type-B	
1630.04	Stilling Basin	
Rock Inlet Sediment Trap:		
1632.01	Type A	
1632.02	Type B	
1632.03	Type C	
Skimmer Basin		
Tiered Skimmer Basin		

**THIS PROJECT CONTAINS  
EROSION CONTROL PLANS  
FOR CLEARING AND  
GRUBBING PHASE OF  
CONSTRUCTION.**



**GRAPHIC SCALE**

0

PLANS

0

PROFILE (HORIZONTAL)

0

PROFILE (VERTICAL)

ROADSIDE ENVIRONMENTAL UNIT  
DIVISION OF HIGHWAYS  
STATE OF NORTH CAROLINA

Prepared in the Office of:  
**ROADSIDE ENVIRONMENTAL UNIT**  
1 South Wilmington St.  
Raleigh, NC 27611  
  
**2006 STANDARD SPECIFICATIONS**

Roadway Standard Drawings

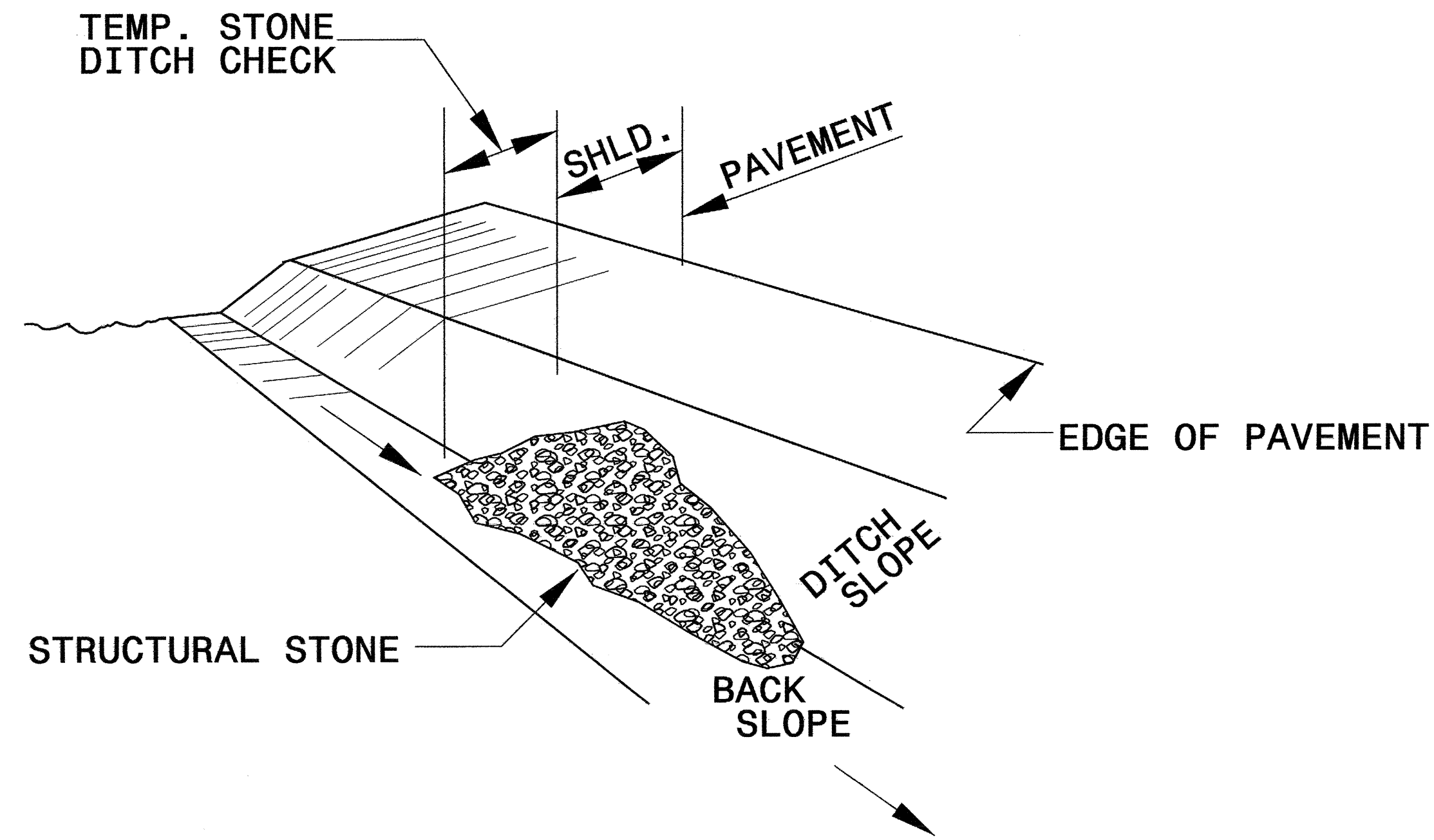
The following roadway english standards as appear in "Roadway Standard Drawings"- Roadway Design Unit - N. C. Department of Transportation - Raleigh, N. C., dated July 18, 2006 and the latest revision thereto are applicable to this project and by reference hereby are considered a part of these plans.

1605.01 Temporary Silt Fence	1632.03 Rock Inlet Sediment Trap Type C
1607.01 Gravel Construction Entrance	1633.01 Temporary Rock Silt Check Type A
1630.02 Silt Basin Type B	1634.02 Temporary Rock Sediment Dam Type B
1630.05 Temporary Diversion	

IS-MAP-2007-1342  
if:\tppro\pcc-es\1\560\2\1\environmental\design\ud4009.txd  
10/18/07 11:58:22 AM

PROJECT REFERENCE NO. U-4009	SHEET NO. EC-2
RW SHEET NO.	
ROADWAY DESIGN ENGINEER	HYDRAULICS ENGINEER

# TEMPORARY ROCK SILT CHECK TYPE 'B' DETAIL

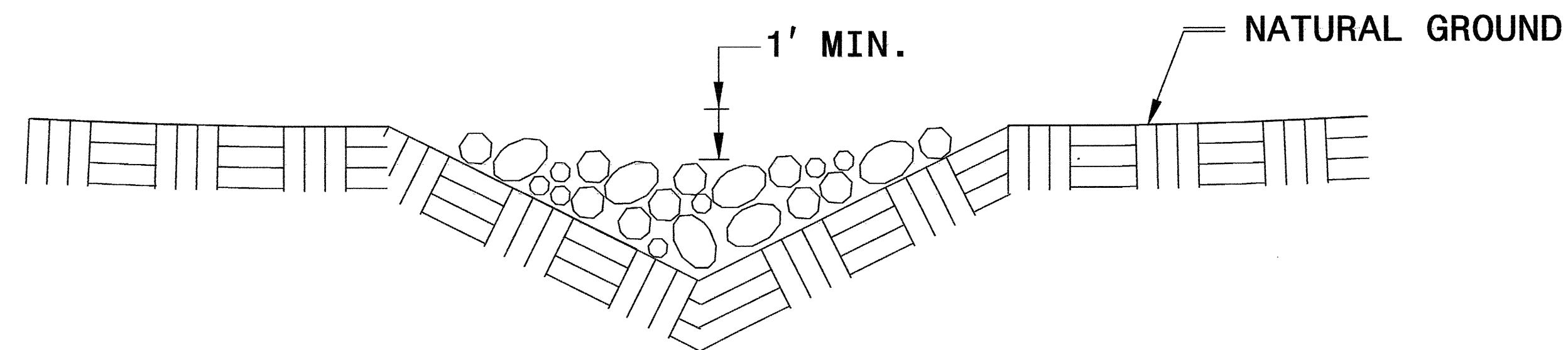


**ISOMETRIC VIEW**

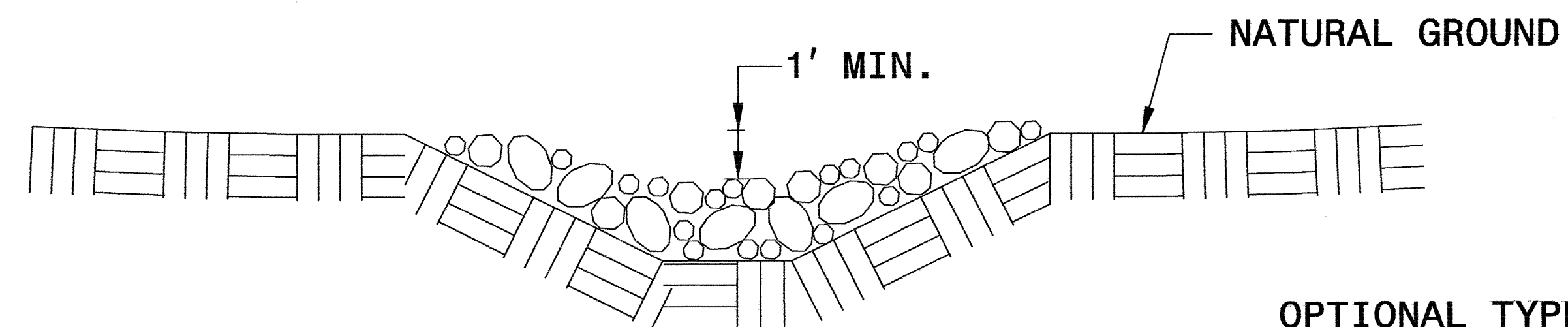
**NOTES:**

USE CLASS 'B' EROSION CONTROL STONE FOR STRUCTURAL STONE.

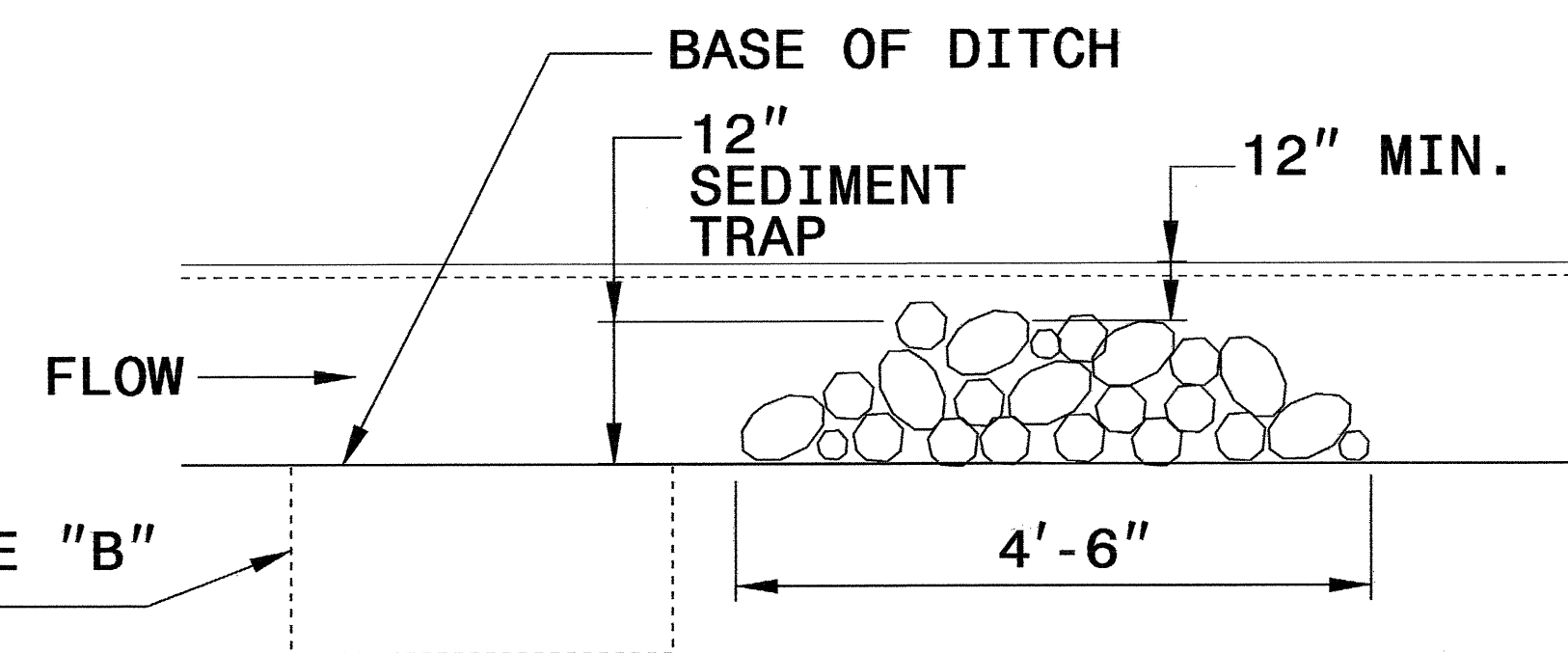
THE ENGINEER MAY DIRECT THE OPTION OF CLASS "A" STONE FOR SITES HAVING LESS THAN ONE (1) ACRE DRAINAGE AREA AND A DITCH GRADE LESS THAN 3%.



**CROSS SECTION VEE DITCH**



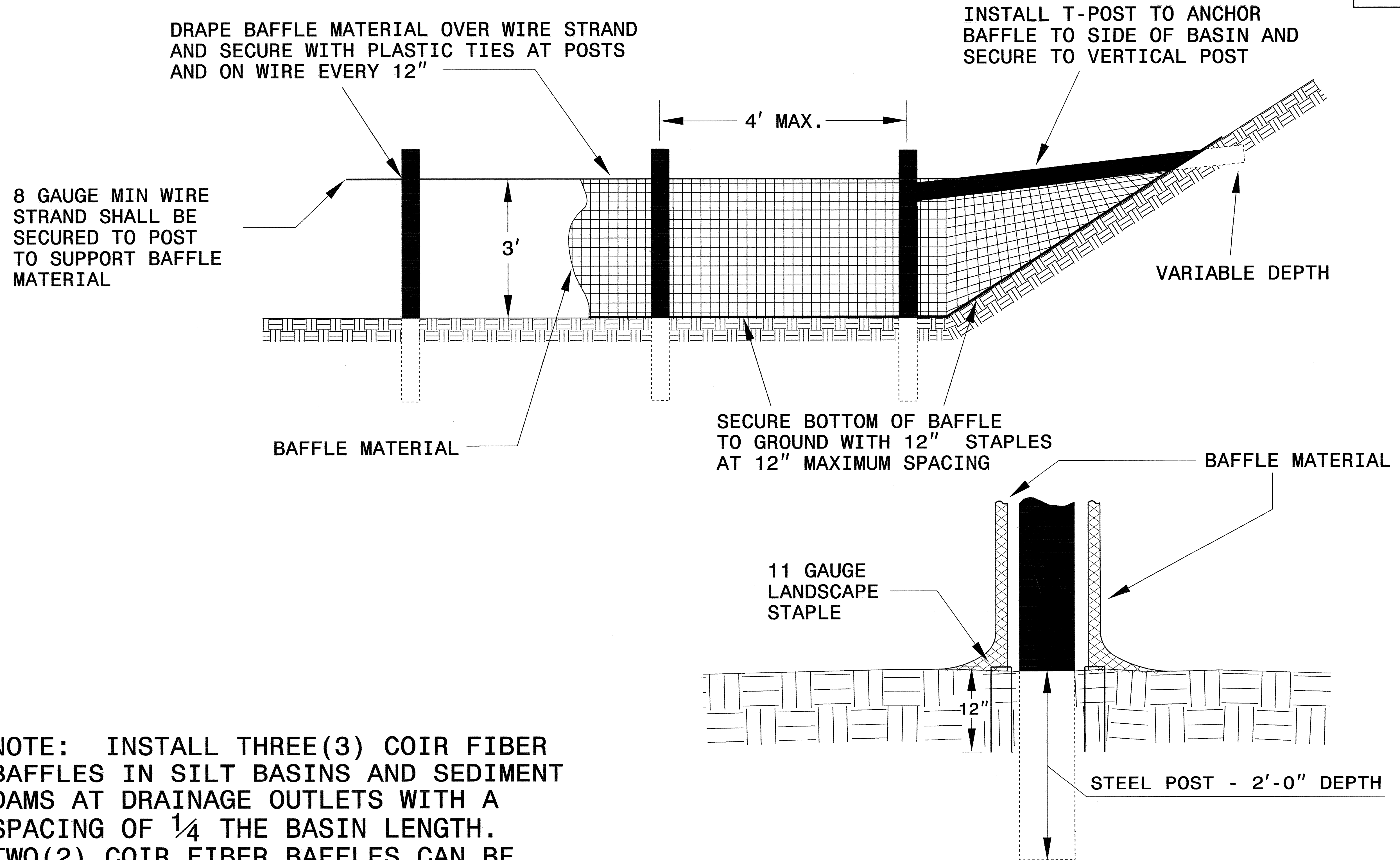
**CROSS SECTION TRAPEZOIDAL DITCH**



**ELEVATION VIEW**

PROJECT REFERENCE NO. U-4009	SHEET NO. EC-2A
RW SHEET NO.	
ROADWAY DESIGN ENGINEER	HYDRAULICS ENGINEER

# COIR FIBER BAFFLE DETAIL



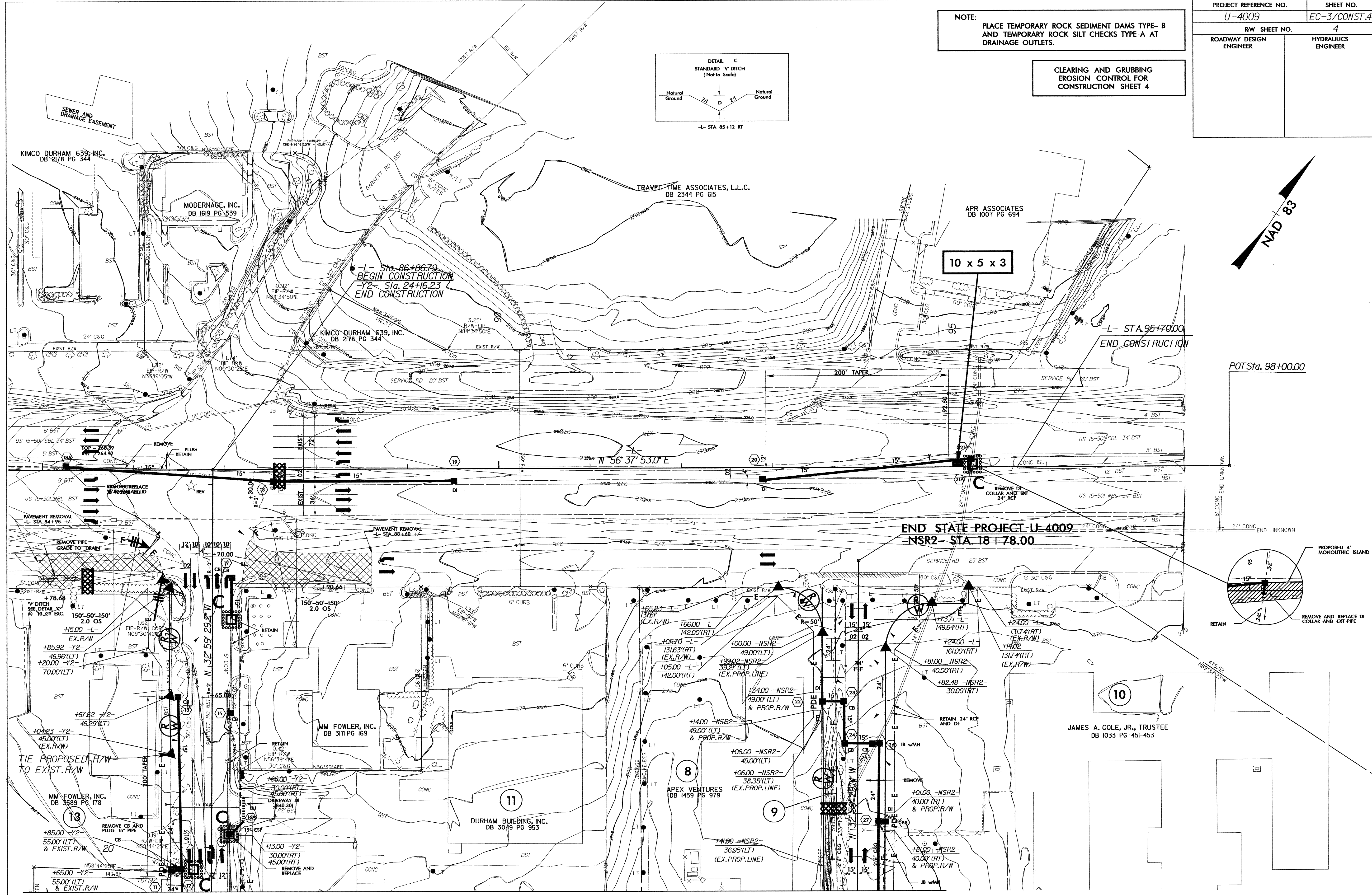
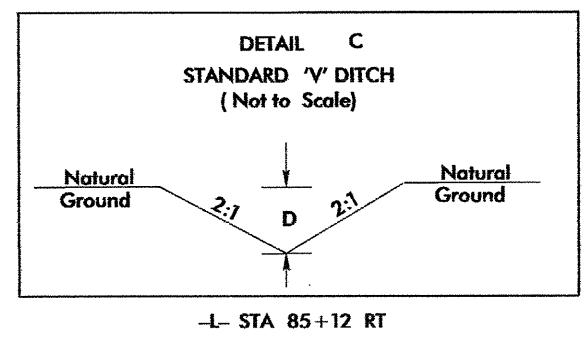
NOTE: INSTALL THREE(3) COIR FIBER BAFFLES IN SILT BASINS AND SEDIMENT DAMS AT DRAINAGE OUTLETS WITH A SPACING OF  $\frac{1}{4}$  THE BASIN LENGTH. TWO(2) COIR FIBER BAFFLES CAN BE INSTALLED IN SILT BASINS AND DAMS LESS THAN 20 FT. IN LENGTH WITH A SPACING OF  $\frac{1}{3}$  THE BASIN LENGTH.

BAFFLE MATERIAL SHALL BE SECURED TO THE BOTTOM AND SIDES OF BASIN USING 12" LANDSCAPE STAPLES

PROJECT REFERENCE NO.	SHEET NO.
U-4009	EC-3/CONST.4
R/W SHEET NO.	4
ROADWAY DESIGN ENGINEER	HYDRAULICS ENGINEER

NOTE: PLACE TEMPORARY ROCK SEDIMENT DAMS TYPE- B AND TEMPORARY ROCK SILT CHECKS TYPE-A AT DRAINAGE OUTLETS.

CLEARING AND GRUBBING EROSION CONTROL FOR CONSTRUCTION SHEET 4



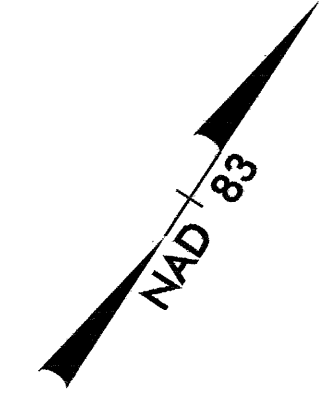
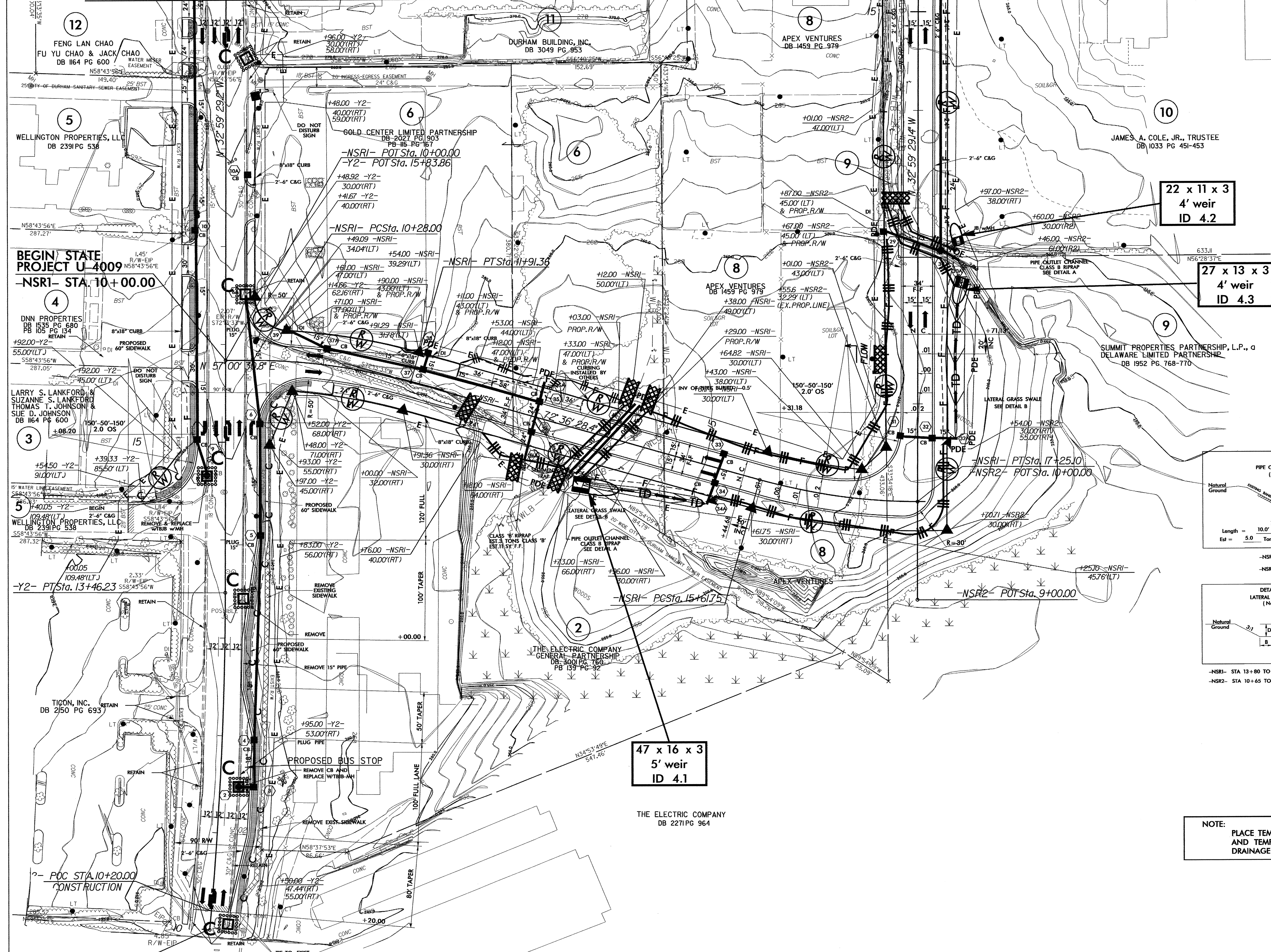
-Y2- STA. 19+50.00 MATCH LINE SEE SHEET 5

SEE SHEET 6 FOR -NSR2- PROFILE  

 PROPOSED MONOLITHIC ISLAND OR SIDEWALK

PROJECT REFERENCE NO.	SHEET NO.
U-4009	EC-4/CONST.5
RW SHEET NO. 5	
ROADWAY DESIGN ENGINEER	HYDRAULICS ENGINEER

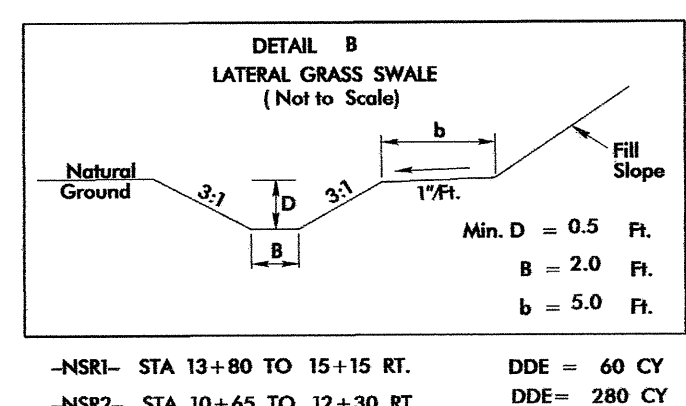
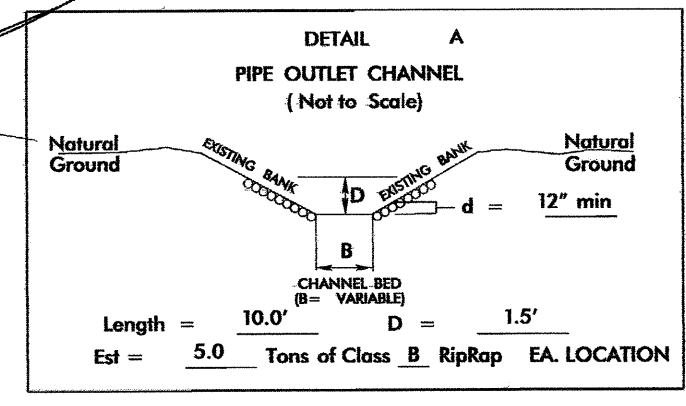
-Y2- STA. 19+50.00 MATCH LINE SEE SHEET 4



22 x 11 x 3  
4' weir  
ID 4.2

27 x 13 x 3  
4' weir  
ID 4.3

47 x 16 x 3  
5' weir  
ID 4.1



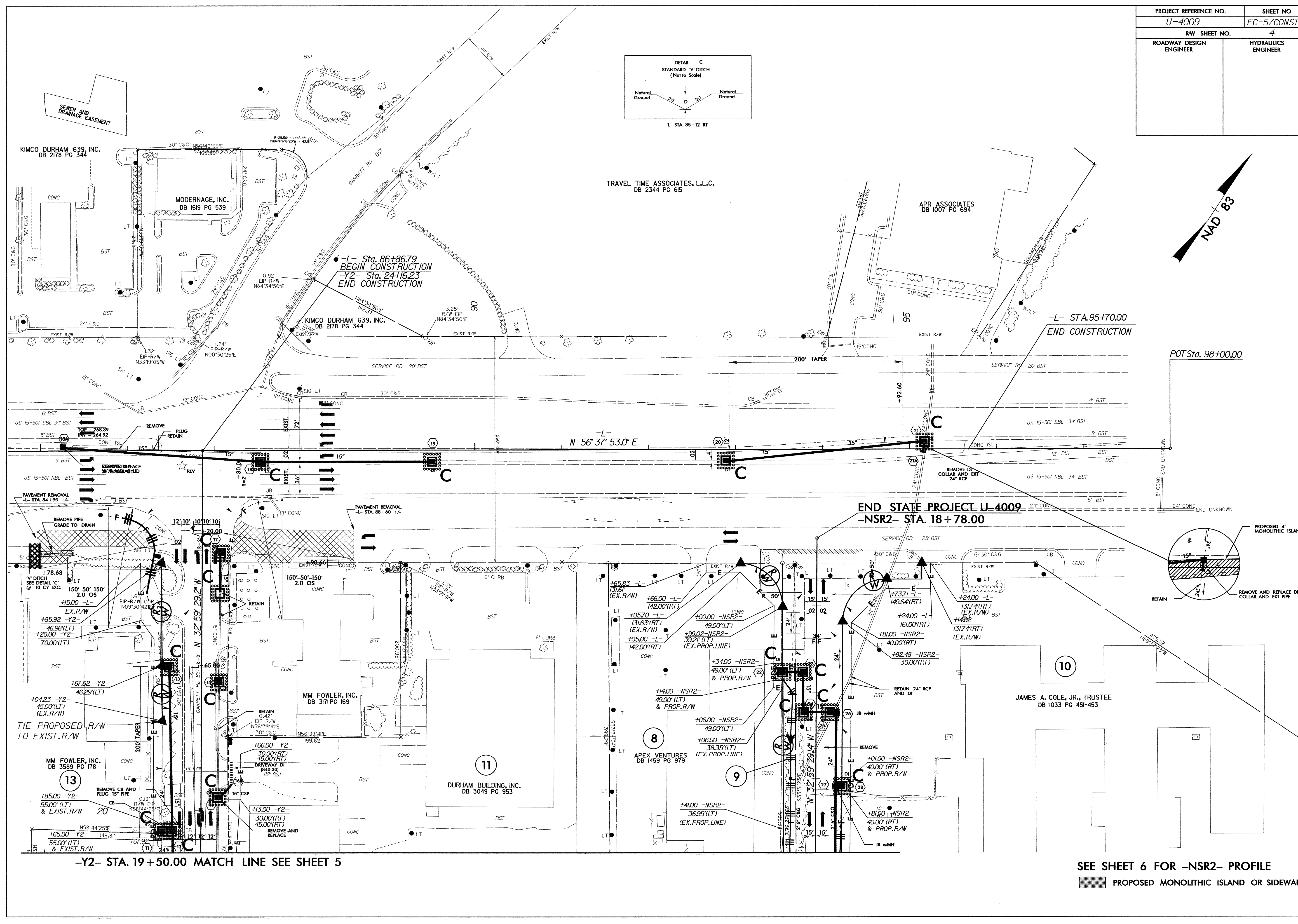
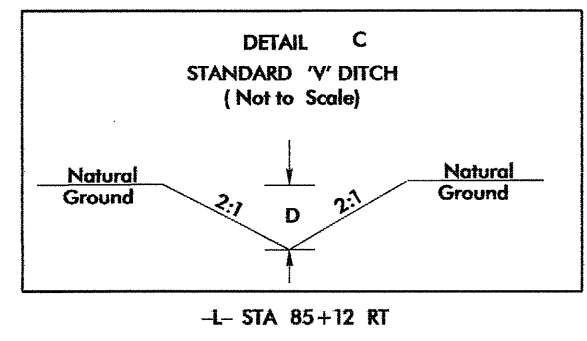
INSTALL FILTER FABRIC UNDER  
TEMPORARY ROCK SILT CHECK(S)  
TYPE A IN PERMITTED WETLANDS.

NOTE:  
PLACE TEMPORARY ROCK SEDIMENT DAMS TYPE- B  
AND TEMPORARY ROCK SILT CHECKS TYPE-A AT  
DRAINAGE OUTLETS.

CLEARING AND GRUBBING  
EROSION CONTROL FOR  
CONSTRUCTION SHEET 5

SEE SHEET 6 FOR -NSRI- PROFILE  
SEE SHEET 6 FOR -NSR2- PROFILE

PROJECT REFERENCE NO.	SHEET NO.
U-4009	EC-5/CONST.4
R/W SHEET NO.	4
ROADWAY DESIGN ENGINEER	HYDRAULICS ENGINEER



-Y2- STA. 19+50.00 MATCH LINE SEE SHEET 5

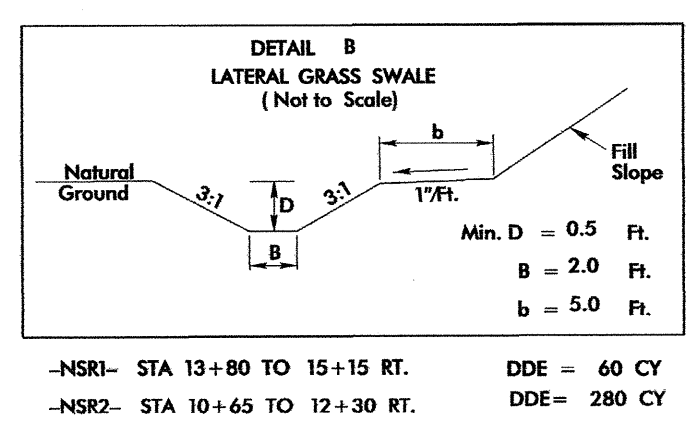
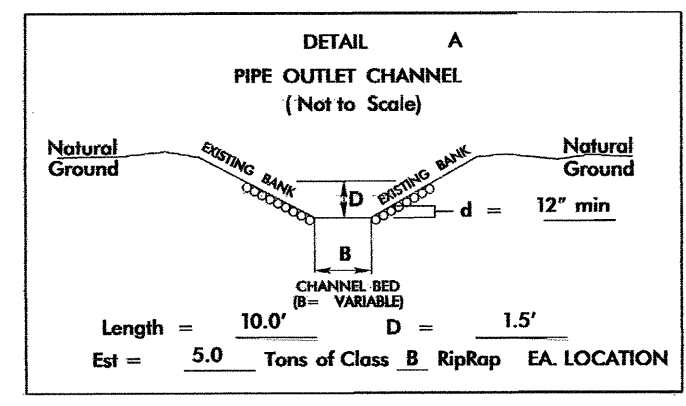
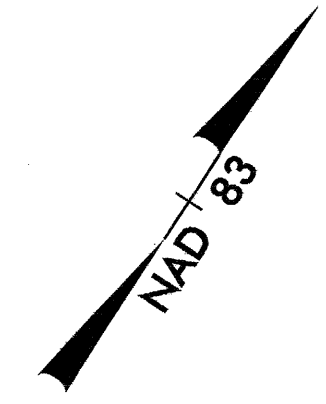
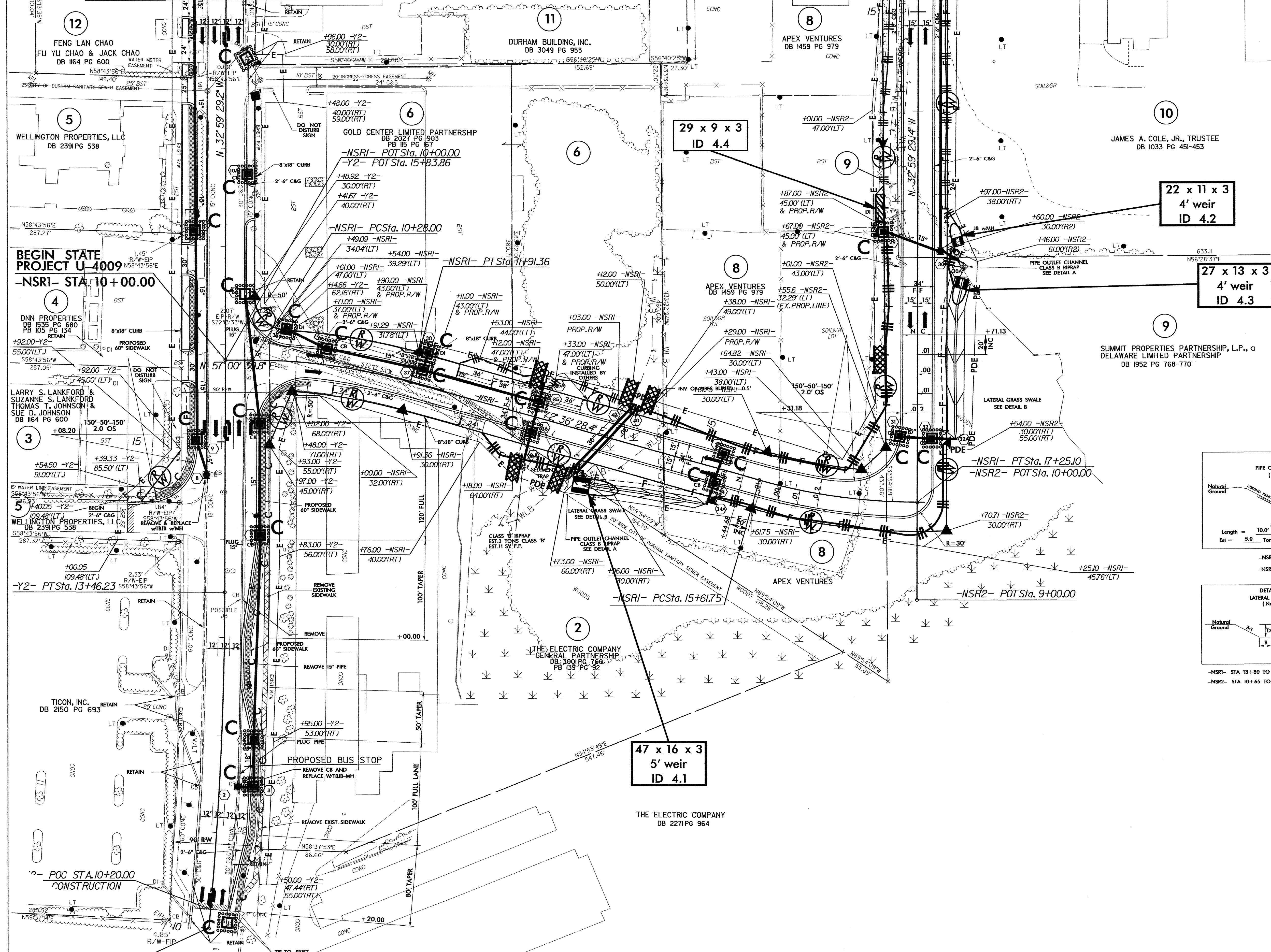
END STATE PROJECT U-4009  
-NSR2- STA. 18+78.00

SEE SHEET 6 FOR -NSR2- PROFILE  

 PROPOSED MONOLITHIC ISLAND OR SIDEWALK

PROJECT REFERENCE NO.	SHEET NO.
U-4009	EC-6/CONST.5
RW SHEET NO. 5	
ROADWAY DESIGN ENGINEER	HYDRAULICS ENGINEER

-Y2- STA. 19+50.00 MATCH LINE SEE SHEET 4



INSTALL FILTER FABRIC UNDER  
TEMPORARY ROCK SILT CHECK(S)  
TYPE A IN PERMITTED WETLANDS.

SEE SHEET 6 FOR -NSRI- PROFILE  
SEE SHEET 6 FOR -NSR2- PROFILE